

Company: Esso Australia Pty Ltd

Well: SNA A-1
Field: Snapper
Rig: ISS Rig 22

Country: Australia

3.65" Powercutter
29-Jun-2007

Rig: ISS Rig 22
Field: Snapper
Location: Gippsland
Well: SNA A-1
Company: Esso Australia Pty Ltd

LOCATION		Permanent Datum: Log Measured From: Drilling Measured From:	Elev.: 0 m 37.0 m above Perm. Datum
Gippsland	Elev.: K.B. 37 m		
Basin	G.L. -58 m		
Bass Strait	D.F. 37 m		
State: Victoria	Max. Well Deviation 36 deg	MSL DF DF	Latitude 38° 11' 37.79"S

Logging Date	29-Jun-2007	Longitude 148° 1' 31.73" E	Latitude 38° 11' 37.79"S
Run Number	1		
Depth Driller	1748 m		
Schlumberger Depth	1198 m		
Bottom Log Interval	1198 m		
Top Log Interval	1198 m		
Casing Fluid Type	Filtered Sea Water		
Salinity			
Density	1.04 g/cm3		
Fluid Level	0 m		
BIT/CASING/TUBING STRING			
Bit Size	9.875 in		
From	657.1 m		
To	1822.5 m		
Casing/Tubing Size	7.625 in		
Weight	26.4 lbm/ft		
Grade	K-55		
From	14.7 m		
To	1757 m		
Maximum Recorded Temperatures	No Temperature Recorded		
Logger On Bottom	29-Jun-2007	12:15	
Unit Number	3827	Location	
Recorded By	M.Pratt, Ron Clark		
Witnessed By	R. Schuback, D. Broomsfield		

Run 1		
PVT DATA		
Oil Density		
Water Salinity		
Gas Gravity		
Bo		
Bw		
1/Bg		
Bubble Point Pressure		
Bubble Point Temperature		
Solution GOR		
Maximum Deviation	36 deg	
CEMENTING DATA		
Primary/Squeeze	Primary	
Casing String No		
Lead Cement Type		
Volume		
Density		
Water Loss		
Additives		
Tail Cement Type		
Volume		
Density		
Water Loss		
Additives		
Expected Cement Top		
Logging Date		
Run Number		
Depth Driller		
Schlumberger Depth		
Bottom Log Interval		
Top Log Interval		
Casing Fluid Type		
Salinity		
Density		
Fluid Level		
BIT/CASING/TUBING STRING		
Bit Size		
From		
To		
Casing/Tubing Size		
Weight		
Grade		
From		
To		
Maximum Recorded Temperatures		
Logger On Bottom		
Unit Number		
Recorded By		
Witnessed By		

DEPTH SUMMARY LISTING

Date Created: 02-JUL-2007 10:46:02

Depth System Equipment

Depth Measuring Device		Tension Device		Logging Cable	
Type:	IDW_H	Type:	CMTD-B/A	Type:	7-46V-XS
Serial Number:	794	Serial Number:	1711	Serial Number:	71260
Calibration Date:	20-Mar-2007	Calibration Date:	07-Jun-2007	Length:	4810.05 M
Calibrator Serial Number:	9	Calibrator Serial Number:	1711	Conveyance Method: Wireline Rig Type: Offshore_Fixed	
Calibration Cable Type:	7-46V-XS	Calibration Gain:	1.02		
Wheel Correction 1:	-5	Calibration Offset:	-691.00		
Wheel Correction 2:	-4				

Depth Control Parameters

Log Sequence:	Subsequent Trip To the Well
Reference Log Name:	
Reference Log Run Number:	
Reference Log Date:	Unknown
Subsequent Trip Down Log Correction:	

Depth Control Remarks

1. Used IDW as primary Depth Control
2. Used Z Chart as secondary Depth Control
3. Log Correlated to Tubing Tally
4.
5.
6.

DISCLAIMER

THE USE OF AND RELIANCE UPON THIS RECORDED-DATA BY THE HEREIN NAMED COMPANY (AND ANY OF ITS AFFILIATES, PARTNERS, REPRESENTATIVES, AGENTS, CONSULTANTS AND EMPLOYEES) IS SUBJECT TO THE TERMS AND CONDITIONS AGREED UPON BETWEEN SCHLUMBERGER AND THE COMPANY, INCLUDING: (a) RESTRICTIONS ON USE OF THE RECORDED-DATA; (b) DISCLAIMERS AND WAIVERS OF WARRANTIES AND REPRESENTATIONS REGARDING COMPANY'S USE OF AND RELIANCE UPON THE RECORDED-DATA; AND (c) CUSTOMER'S FULL AND SOLE RESPONSIBILITY FOR ANY INFERENCE DRAWN OR DECISION MADE IN CONNECTION WITH THE USE OF THIS RECORDED-DATA.






OTHER SERVICES1
OS1:
OS2:
OS3:
OS4:
OS5:
REMARKS: RUN NUMBER 1
Log correlated to Tubing Tally
Objective:
To Rig Up wireline, RIH with a 3.65" Powercutter with 1-11/16" CCL and cut the
4.5" Tubing at 1198m MDKB
CCL Stop depth 1196.1m MDKB
CCL to Top Shot 1.9m

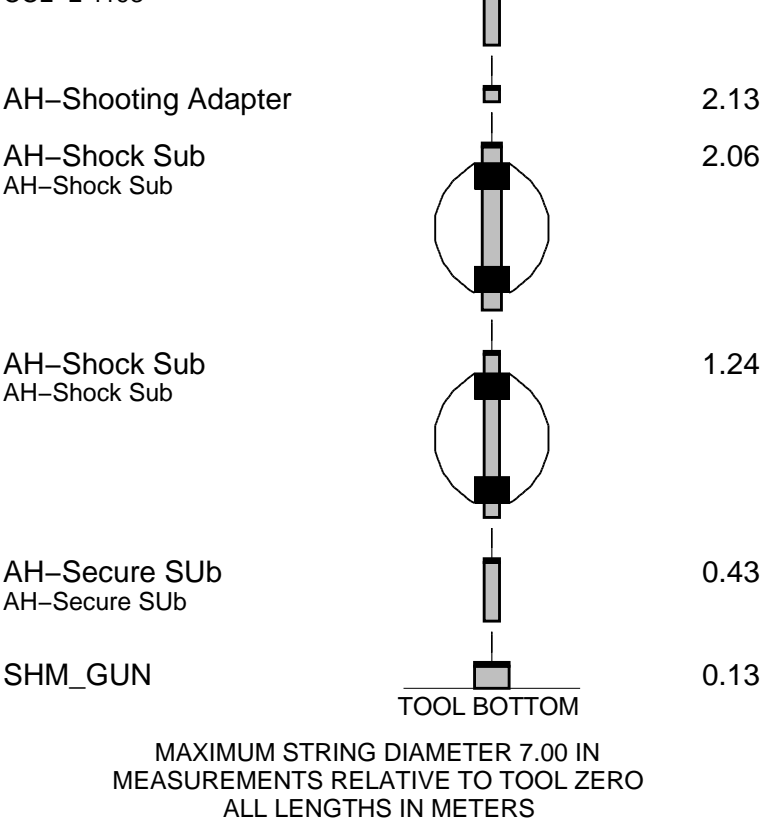
Tubing cut with Powercutter at 1198m MDKB.
Toolstring getting held up @ 1198 m MDKB.
Miss run: run # 1
Correlation Pass is downlog, Presented after flipping.

Schlumberger Crew:
Operators:
Days: Brendan Glover, Simon Kiss
Nights: Max Hancock, Dave Stuckey

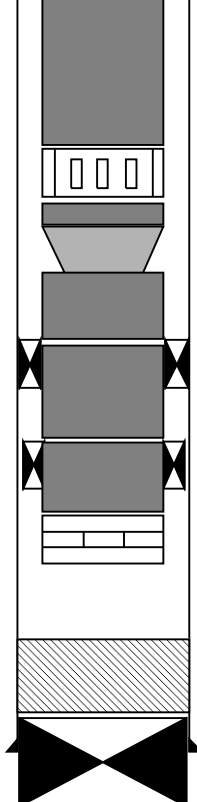
RUN 1			
SERVICE ORDER #:	AUSL07367142		
PROGRAM VERSION:	15C0-309		
FLUID LEVEL:	0 m		
LOGGED INTERVAL	START	STOP	

EQUIPMENT DESCRIPTION

RUN 1			
SURFACE EQUIPMENT			
WITM (SHM)-(CTS)-A			
DOWNHOLE EQUIPMENT			
PEH-EF PEH-EF 1003		6.88	
AH-38		6.33	
EQF-46 EQF-46 210		6.25	
EQF-46 EQF-46 211		4.42	
CCL-L CCL-L 4193		2.59	
Tension CCL		TOOL ZERO	



Production String	(in)		(m)	Well Schematic	(m)	(in)		Casing String
	OD	ID	MD		MD	OD	ID	
Tubing	5.500	4.950	10.3		0.0	10.750	10.050	Casing String, 60.4 kg/m Casing String
						7.625	6.969	
SSV Landing Nipple	6.110		453.7		657.1	10.750	10.050	Casing Shoe
Tubing		4.950	453.7					
Landing Nipple	6.110	4.562	821.7					
Tubing	5.500	4.950	822.2					

Sliding Sleeve	6.560	4.562	1190.7					
Tubing Pup Joint	5.500	4.950	1192.1					
Crossover Joint	6.050	3.833	1194.0					
Tubing Joint	5.563	3.958	1194.4					
Packer	7.625	5.563	1204.0					
Tubing Joint	5.563	3.958	1207.3					
Packer	7.625	5.563	1398.4					
Tubing Pup Joint	5.563	3.958	1401.7					
Landing Nipple	5.619	3.456	1404.1					
Plug	7.625	0.000	1748.0					
					1772.5	7.625	6.969	
								Sand Fill – Produced
								Casing Shoe



Job Event Summary

MAXIS Field Log

Schlumberger Job Event Summary

Time	Elapsed Time	Depth (M)	File
Log Pass (down)	29-Jun-2007 12:14	000:04	1168 – 1200.9
Log Pass (up)	29-Jun-2007 12:17	000:16	1200.8 – 1110.6
			Flip_PERFO_039LUP
			PERFO_034LUP



Powercutter
Operational Summary

MAXIS Field Log

Device	Status	Req Depth (M)	Obs Depth (M)	Time Used
GUN1	Used	1198.0	1198.0	Fri Jun 29 12:20:05 2007



Powercutter
Firing Cut record

MAXIS Field Log

Company: Esso Australia Pty LtdWell: SNA_A-1

Output DLIS Files

DEFAULT	PERFO_034LUP	FN:26	PRODUCER	29-Jun-2007 12:17	1200.8 M	1110.6 M
---------	--------------	-------	----------	-------------------	----------	----------

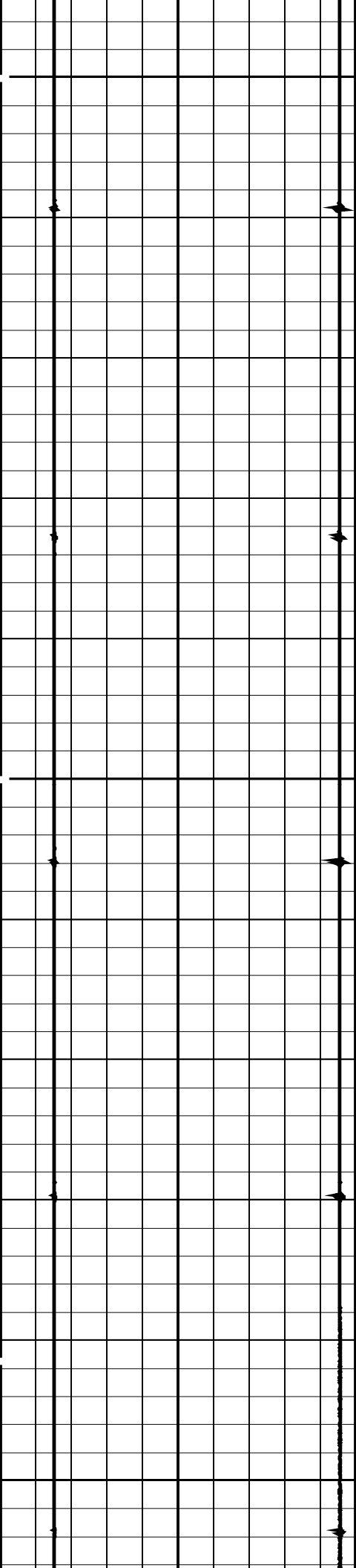
OP System Version: 15C0-309
MCM

SHM_GUN	15C0-309	CCL-L	15C0-309
---------	----------	-------	----------

PIP SUMMARY

☒ Time Mark Every 60 S

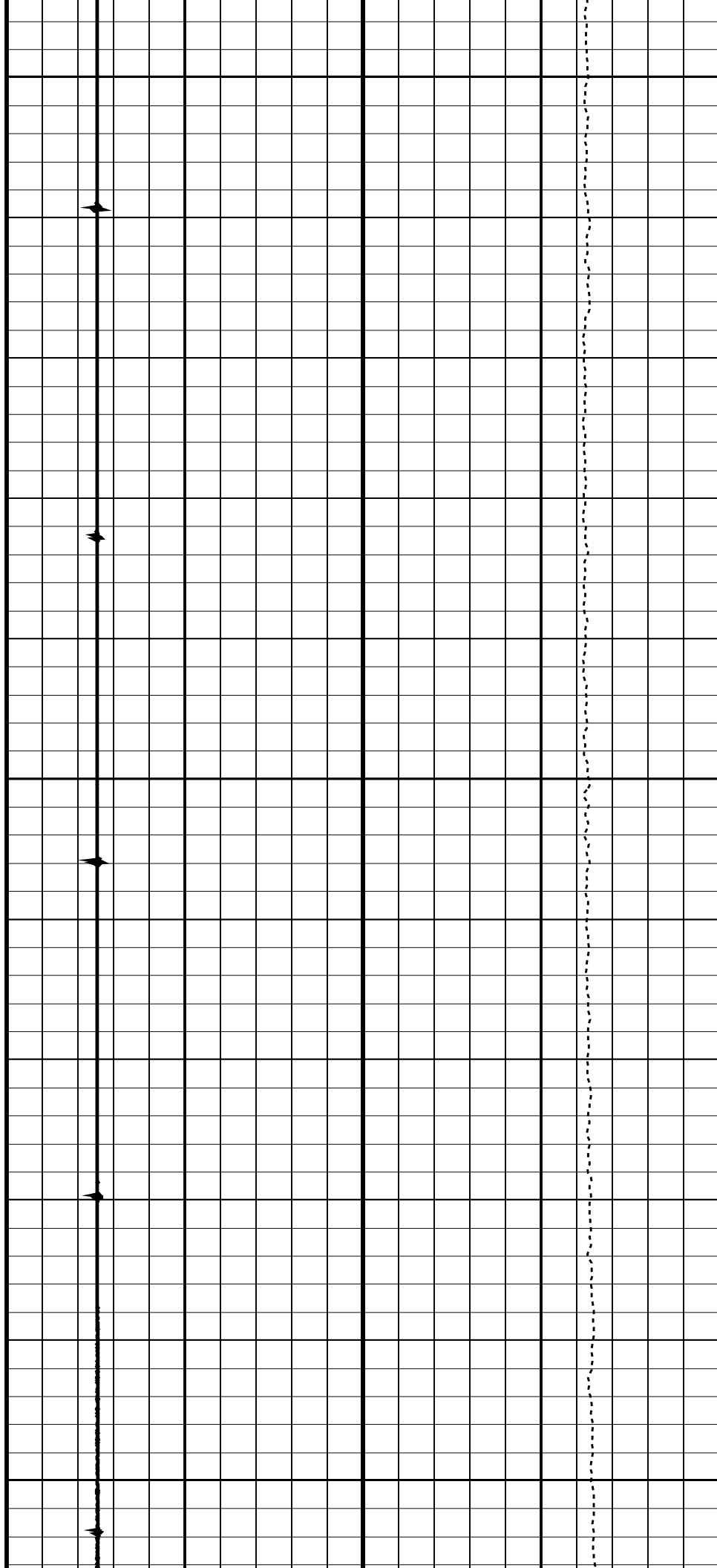
Raw Casing Collar Locator (RCCL)									
-3		(----						17	
Casing Collar Locator (CCL)									
-19		(----						1	

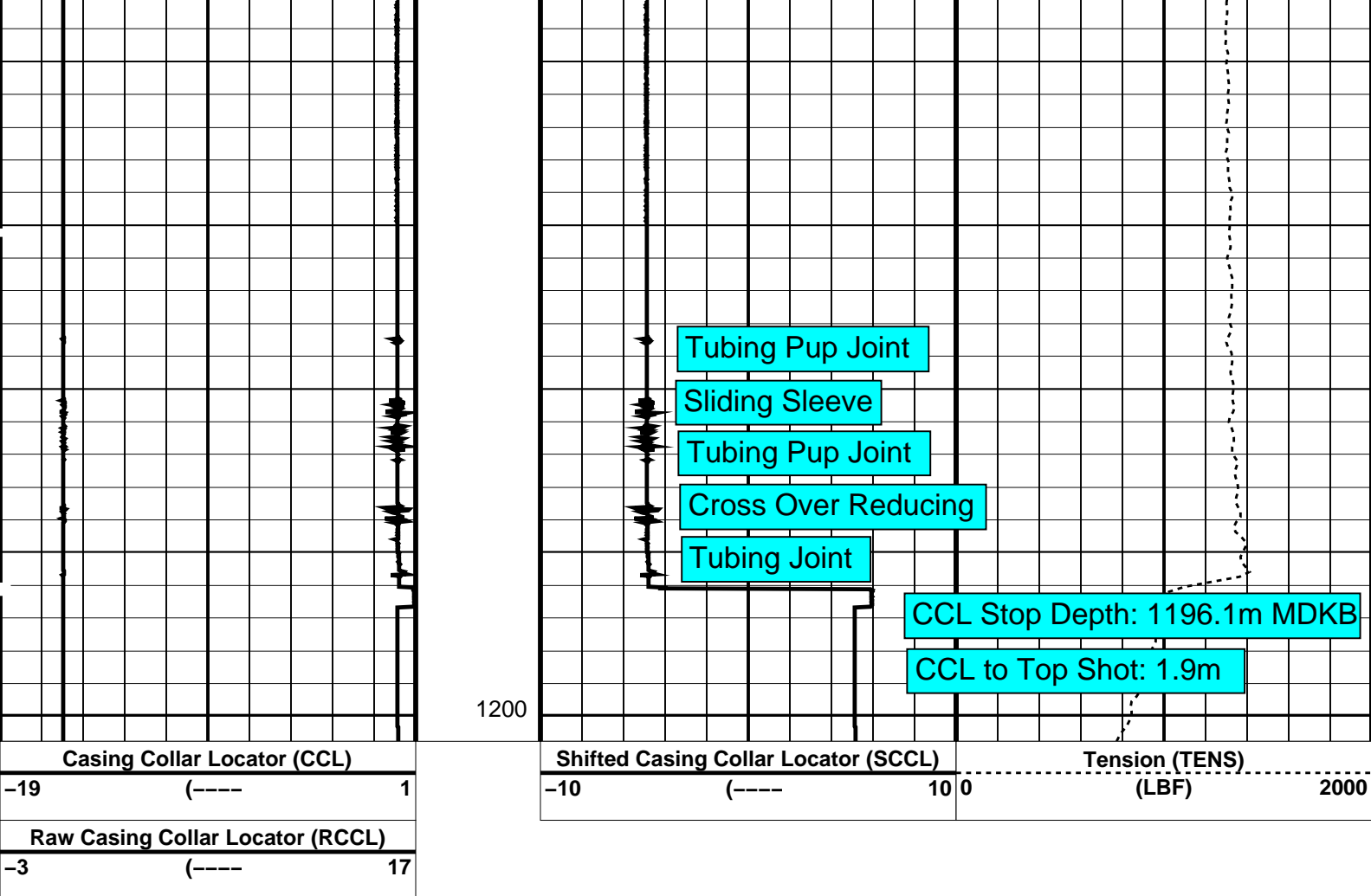


1125

1150

1175





Time Mark Every 60 S

Parameters		
DLIS Name	Description	Value
CCL-L: Casing Collar Locator		
CCLD	CCL reset delay	12 IN
CCLT	CCL Detection Level	0.3 V

Format: CCLLog Vertical Scale: 1:200 Graphics File Created: 29-Jun-2007 12:17

OP System Version: 15C0-309			
MCM			
SHM_GUN	15C0-309	CCL-L	15C0-309

Output DLIS Files			
DEFAULT	PERFO_034LUP	FN:26	PRODUCER 29-Jun-2007 12:17



Powercutter
Correlation Pass

Input DLIS Files

DEFAULT	Flip_PERFO_039LUP	PRODUCER	30-Jun-2007 09:58	1200.9 M	1168.0 M
---------	-------------------	----------	-------------------	----------	----------

Output DLIS Files

DEFAULT	PERFO_041PUP	FN:32	PRODUCER	30-Jun-2007 10:03	1200.9 M	1168.5 M
---------	--------------	-------	----------	-------------------	----------	----------

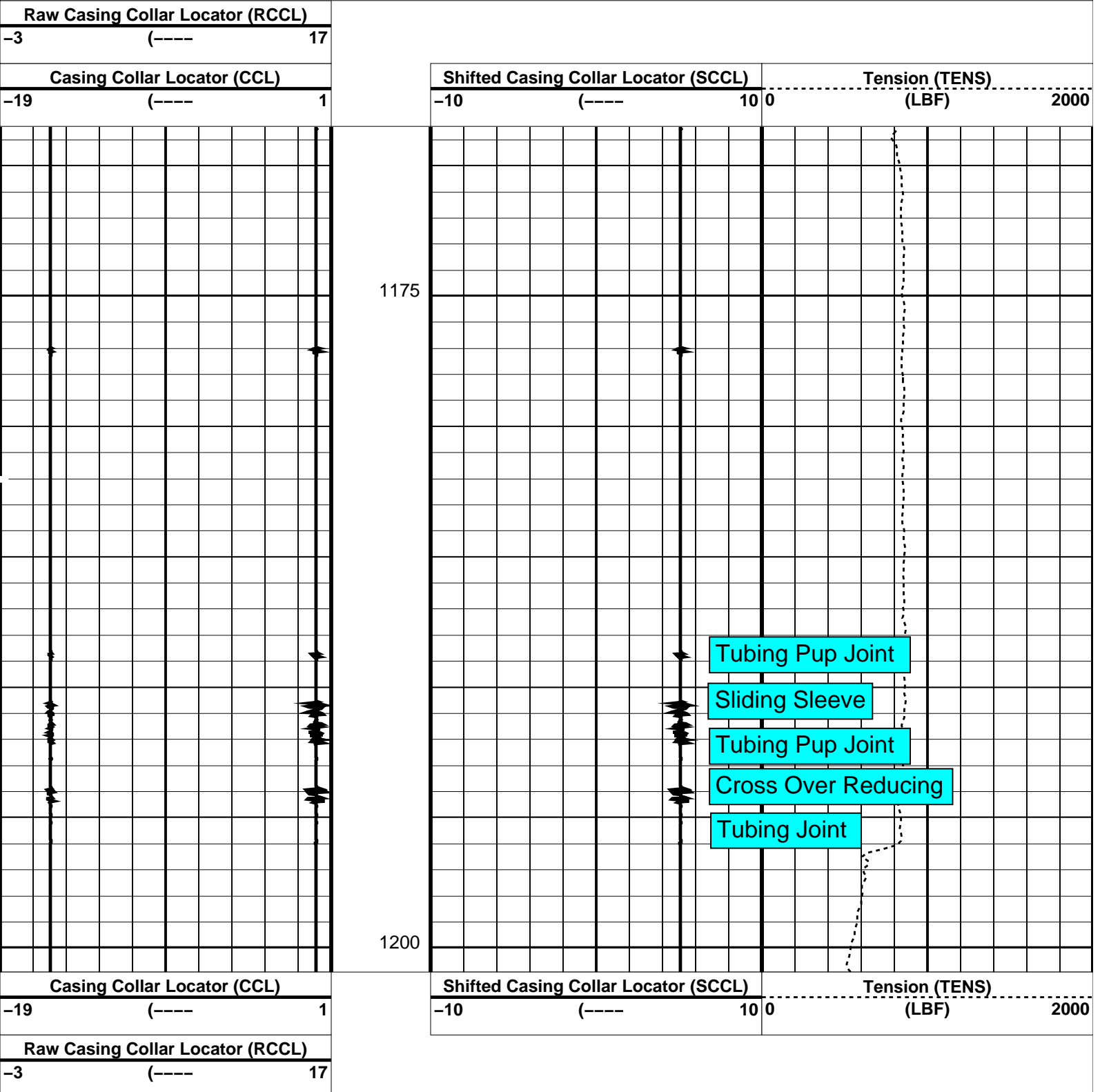
OP System Version: 15C0-309

MCM

SHM_GUN	15C0-309	CCL-L	15C0-309
---------	----------	-------	----------

PIP SUMMARY

☒ Time Mark Every 60 S



<div><div></div><div>Time Mark Every 60 S</div></div>		PIP SUMMARY			
Parameters					
DLIS Name		Description		Value	
CCLD CCLT	CCL-L: Casing Collar	Locator		12	IN
		CCL reset delay		0.3	V
		CCL Detection Level			
DO PP	System and Miscellaneous	Depth Offset for Playback		0.0	M
		Playback Processing		NORMAL	
Format: CCLLog		Vertical Scale: 1:200		Graphics File Created: 30-Jun-2007 10:03	
OP System Version: 15C0-309					
MCM					
SHM_GUN	15C0-309	CCL-L	15C0-309		
Input DLIS Files					
DEFAULT	Flip_PERFO_039LUP	PRODUCER	30-Jun-2007 09:58	1200.9 M	1168.0 M
Output DLIS Files					
DEFAULT	PERFO_041PUP	FN:32	PRODUCER	30-Jun-2007 10:03	
Company: Esso Australia Pty Ltd					
Schlumberger					
Well: SNA A-1					
Field: Snapper					
Rig: ISS Rig 22					
Country: Australia					
3.65" Powercutter					
29 -Jun- 2007					