



Company: Esso Australia Pty Ltd.

Well: A-16  
Field: Bream A  
Rig : Prod4 / Crane Country: Australia

2 1/8" Phased Powerjet  
Mwpt Perforation  
7" HPI Plug

Prod4 / Crane

Rig :  
Field: Bream A  
Location: Gippsland  
Well: A-16  
Company: Esso Australia Pty Ltd.

LOCATION		Gippsland	Elev.: K.B. 33.5 m
		Basin	G.L. -59 m
		Bass Strait	D.F. 33.5 m
		Permanent Datum: M.S.L.	Elev.: 0 m
Log Measured From: D.F.	33.5 m above Perm. Datum		
Drilling Measured From: D.F.			
State : Victoria	Max. Well Deviation 92 deg	Longitude 147 46'15"E	Latitude 038 30'04"S

Logging Date	3-Jul-2007		
Run Number	1 thru 3		
Depth Driller	2756.5 m		
Schlumberger Depth	2756.5 m		
Bottom Log Interval	2756.5 m		
Top Log Interval	2650 m		
Casing Fluid Type	Production Fluids		
Salinity			
Density			
Fluid Level	945 m		
BIT/CASING/TUBING STRING			
Bit Size	8.500 in		
From			
To			
Casing/Tubing Size	7.000 in		
Weight	26 lbm/ft		
Grade	N-80		
From	2422 m		
To	3496 m		
Maximum Recorded Temperatures	209 degF		
Logger On Bottom	3-Jul-2007		14:45
Unit Number	889	Prod4 / Ausl	
Recorded By	G Wright , S Gilbert.		
Witnessed By	D Broomfield , G Rimmer.		

	Run 1
Oil Density	
Water Salinity	
Gas Gravity	
Bo	
Bw	
1/Bg	
Bubble Point Pressure	
Bubble Point Temperature	
Solution GOR	
Maximum Deviation	92 deg
CEMENTING DATA	
Primary/Squeeze	Primary
Casing String No	
Lead Cement Type	
Volume	
Density	
Water Loss	
Additives	
Tail Cement Type	
Volume	
Density	
Water Loss	
Additives	
Expected Cement Top	
Logging Date	
Run Number	
Depth Driller	
Schlumberger Depth	
Bottom Log Interval	
Top Log Interval	
Casing Fluid Type	
Salinity	
Density	
Fluid Level	
BIT/CASING/TUBING STRING	
Bit Size	
From	
To	
Casing/Tubing Size	
Weight	
Grade	
From	
To	
Maximum Recorded Temperatures	
Logger On Bottom	
Unit Number	
Recorded By	
Witnessed By	

## DEPTH SUMMARY LISTING

Date Created: 1-JUL-2007 6:51:39

### Depth System Equipment

Depth Measuring Device	Tension Device	Logging Cable
Type: IDW-EB Serial Number: 6373 Calibration Date: 04-Jan-2007 Calibrator Serial Number: 9 Calibration Cable Type: 2-32ZT Wheel Correction 1: -2 Wheel Correction 2: -4	Type: PSDS/OSDS Serial Number: 325357 Calibration Date: 10-Jun-2007 Calibrator Serial Number: 1174 Calibration Gain: 0.92 Calibration Offset: 199.00	Type: 2-32ZT Serial Number: 24425 Length: 6473.04 M Conveyance Method: Wireline Rig Type: Rigless

### Depth Control Parameters

Log Sequence:	Subsequent Log In the Well
Reference Log Name:	ExxonMobil A-16 correlation log.
Reference Log Run Number:	
Reference Log Date:	15-Jan-2005

### Depth Control Remarks

1. IDW used as primary depth control. 2. Z-chart used as back-up.
--

#### DISCLAIMER

THE USE OF AND RELIANCE UPON THIS RECORDED-DATA BY THE HEREIN NAMED COMPANY (AND ANY OF ITS AFFILIATES, PARTNERS, REPRESENTATIVES, AGENTS, CONSULTANTS AND EMPLOYEES) IS SUBJECT TO THE TERMS AND CONDITIONS AGREED UPON BETWEEN SCHLUMBERGER AND THE COMPANY, INCLUDING: (a) RESTRICTIONS ON USE OF THE RECORDED-DATA; (b) DISCLAIMERS AND WAIVERS OF WARRANTIES AND REPRESENTATIONS REGARDING COMPANY'S USE OF AND RELIANCE UPON THE RECORDED-DATA; AND (c) CUSTOMER'S FULL AND SOLE RESPONSIBILITY FOR ANY INFERENCE DRAWN OR DECISION MADE IN CONNECTION WITH THE USE OF THIS RECORDED-DATA.

OTHER SERVICES1 OS1: None OS2: OS3: OS4: OS5:
REMARKS: RUN NUMBER 1
Log correlated to ExxonMobil composite supplied with logging program.
Maximum well deviation = 92 degrees at 3398 MDKB.
Objective: Perforate the well using a 5m 2 1/8" Phased Powerjet gun
over the interval 2720.5m to 2725.5m MDKB. Set a 7"HPI Plug with top of seal
@ 2736m MDKB.
Before Gun- SBHP: 2673 psia SBHT: 208 degf
After Gun- SBHP: 2612 psia SBHT: 209 degf
Top Shot @ 2720.5m MDKB

Top Shot @ 2720.0m MDKB
CCL to Top Shot = 3.4 mtrs.
CCL Stop Depth = 2717.1 m MDKB
Top of Seal @ 2736 m MDKB
CCL to Top of Seal = 10.5 m
CCL Stop Depth = 2725.5 m MDKB

Crew : C Shiells , J Light , A Hall , K Kerr.

RUN 1 SERVICE ORDER #: PROGRAM VERSION: FLUID LEVEL:			RUN 2 SERVICE ORDER #: PROGRAM VERSION: FLUID LEVEL:		
AusI07484942 14C0-302 945 m					
LOGGED INTERVAL	START	STOP	LOGGED INTERVAL	START	STOP

EQUIPMENT DESCRIPTION

RUN 1		RUN 2	
SURFACE EQUIPMENT		SURFACE EQUIPMENT	
WITM-A 827 PSC_16MHZ 827		MWPM-. 3000	
DOWNHOLE EQUIPMENT		DOWNHOLE EQUIPMENT	
AH-SWBS-B 761  AH-SWBS-B 762  AH-SWRS-B 759  AH-SWBS-B 763  MH-SWHS-A 726 Detail MT TelStatus CTEM  PSC-A 827 PSPT-B 827 PSTC 827 PBMS-B 827 CQG_F_Mano 827 RTD_Thermometer 827 GR 827 CCL 827 PBMS 827  Well_Temp CQG Manom CCL PBMS PSTC  EQF-43	10.23  9.53  8.83  8.49  7.79 7.40  6.27  5.34 5.23 5.11 4.88  4.88	AH-SWBS-B 731  AH-SWBS-B 761  AH-SWBS-B 762  AH-SWBS-B 763  MWPG-AA 69 MWGH-AA 69 MWPG GR  MWPH-AA 74 MWPS-AA 74  CCL SMWP Pres SMWP Temp Tension  AH-Flex Joint 41  AH-122 7002  AH-SAH-G 1035  MPD_MP 268	14.75  14.06  13.38  12.69  12.01 11.68 11.47  10.49  7.67  7.12 7.01  6.56

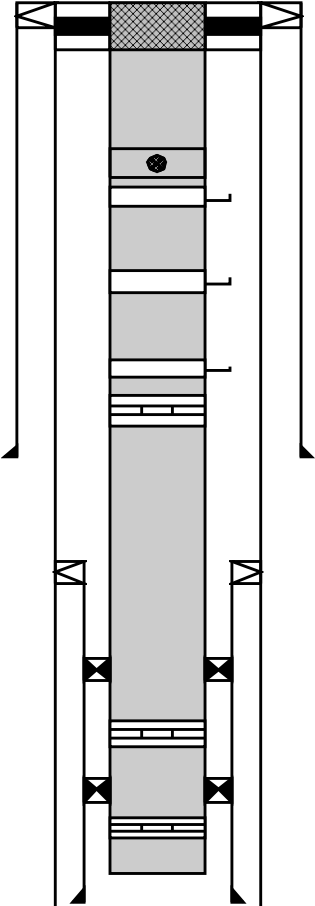
GUN-5mtr 2 1/8" Powerjet Gun 1

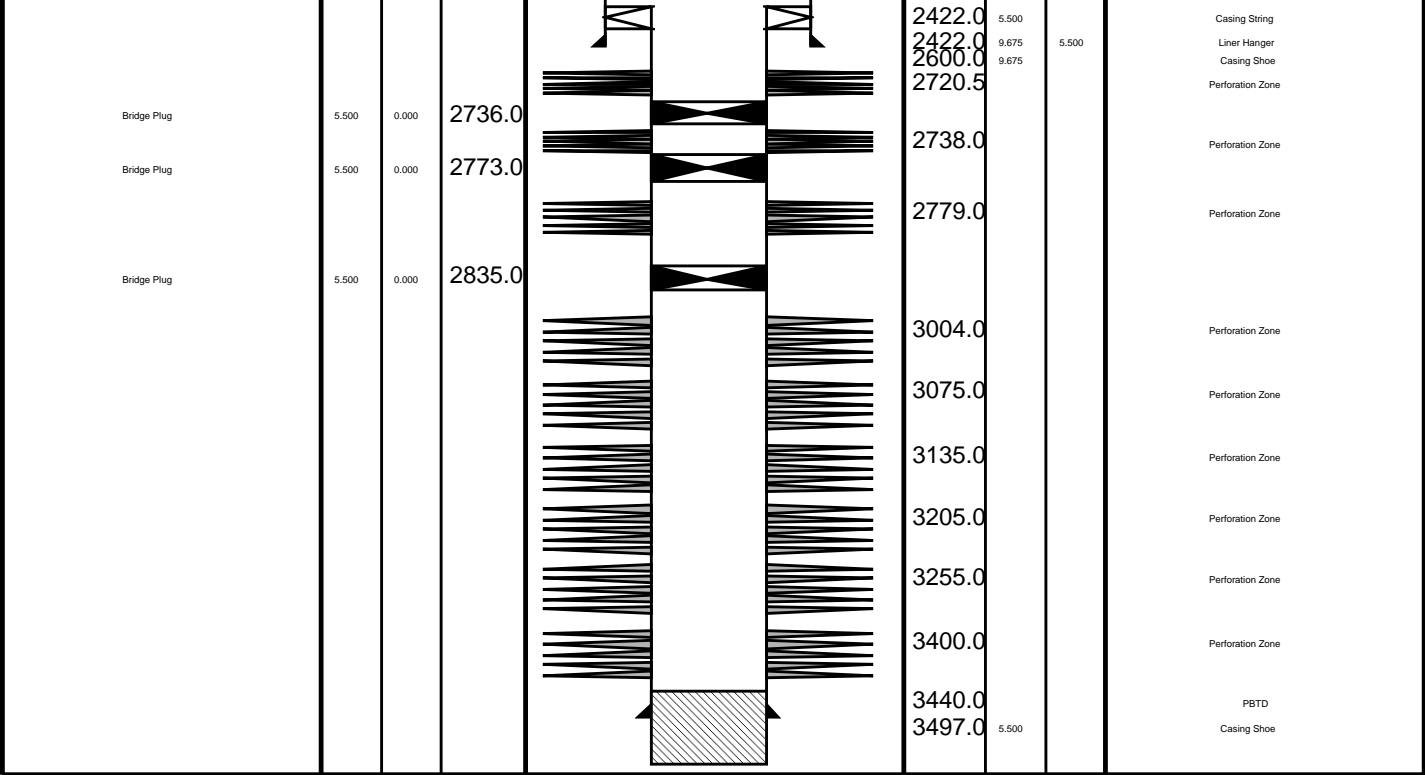
5.56

3.05

MAXIMUM STRING DIAMETER 2.13 IN  
MEASUREMENTS RELATIVE TO TOOL ZERO  
ALL LENGTHS IN METERS

MAXIMUM STRING DIAMETER 2.13 IN  
MEASUREMENTS RELATIVE TO TOOL ZERO  
ALL LENGTHS IN METERS

Production String	(m)		MD	Well Schematic	(m)			Casing String	
	OD	ID			MD	OD	ID		
Tubing Tubing Hanger	4.500 9.675	4.500	12.4 12.4		13.0 13.0 13.0	13.375 9.675 13.375	9.675	Casing String Casing String Liner Hanger	
Shutin Valve	4.500		427.0						
Gas Lift Mandrel	4.500		483.0						
Gas Lift Mandrel	4.500		810.0						
Gas Lift Mandrel	4.500		1091.0						
Nipple	4.500		1117.0						
						990.0	13.375		Casing Shoe
						1448.0 1448.0	7.000 9.675	7.000	Casing String Liner Hanger
Packer	7.000	4.500	2337.0						
Nipple	4.500		2351.0						
Nipple	4.500		2383.0						
					2420.0	7.000		Casing Shoe	



## Job Event Summary

MAXIS Field Log

### Schlumberger Job Event Summary

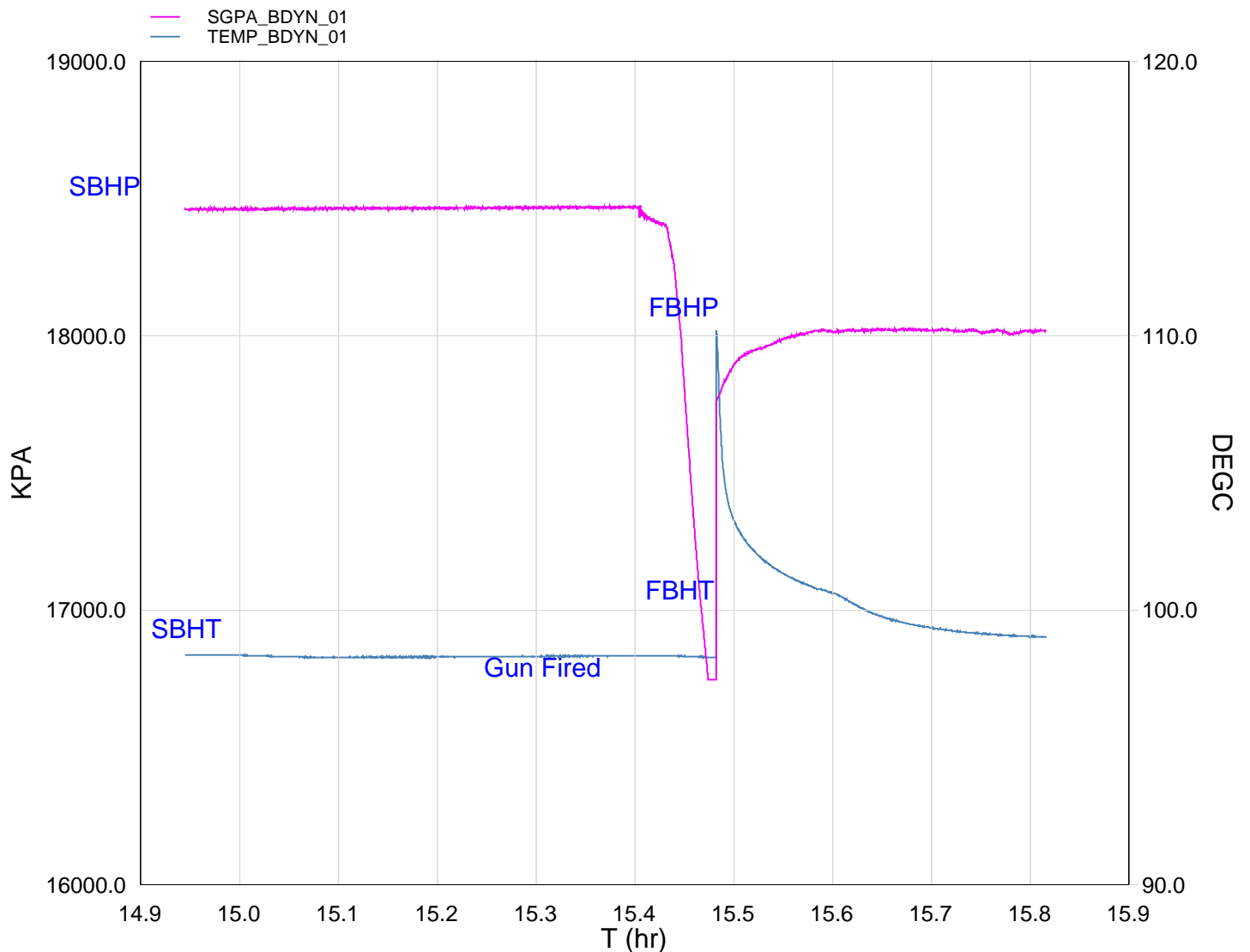
Time	Elapsed Time	Depth (M)	File
Simulated Log	30-Jun-2007 4:37 000:01		PSP_005LUP
Simulated Log	30-Jun-2007 4:41 000:01		PSP_006LUP
Simulated Log	30-Jun-2007 4:43 000:00		PSP_007LUP
Simulated Log	30-Jun-2007 4:45 000:01		PSP_008LUP
Simulated Log	1-Jul-2007 7:40 000:01		PSP_012LUP
Simulated Log	1-Jul-2007 7:41 000:06		PSP_013LUP
Log Pass (down)	1-Jul-2007 7:50 000:43	-16.2 - 2788.0	PSP_015LDP
Log Pass (up)	1-Jul-2007 8:34 000:12	2792.9 - 2634.2	PSP_016LUP
Log Pass (down)	1-Jul-2007 8:52 000:03	2634.1 - 2780.4	PSP_018LDP
Log Pass (up)	1-Jul-2007 8:55 000:39	2777.5 - -1.2	PSP_019LUP
Simulated Log	1-Jul-2007 9:39 000:25		PERFO_020LUP
Simulated Log	1-Jul-2007 10:04 000:11		PERFO_021LUP
Log Pass (down)	1-Jul-2007 10:47 000:40	-0.8 - 2741.2	PERFO_022LDP
Log Pass (up)	1-Jul-2007 11:28 000:03	2741.5 - 2671.0	PERFO_023LUP
Log Pass (down)	1-Jul-2007 11:32 000:02	2678.6 - 2748.4	PERFO_024LDP
Log Pass (up)	1-Jul-2007 11:36 000:11	2748.4 - 2687.8	PERFO_025LUP
Log Pass (down)	1-Jul-2007 11:47 000:01	2687.8 - 2720.5	PERFO_026LDP

Log Pass (down) 1-Jul-2007 11:47 000:01 2690.9 - 2729.5 PERFO\_026LDP  
Log Pass (up) 1-Jul-2007 11:48 000:46 2729.5 - -7.9 PERFO\_027LUP  
Simulated Log 1-Jul-2007 13:14 000:05 PERFO\_028LUP  
Simulated Log 2-Jul-2007 12:39 000:19 PERFO\_030LUP  
Simulated Log 2-Jul-2007 16:47 000:08 PERFO\_031LUP  
Log Pass (down) 3-Jul-2007 14:11 000:23 203.8 - 1964.7 PERFO\_032LDP  
Log Pass (down) 3-Jul-2007 14:36 000:07 2152.0 - 2714.9 PERFO\_033LDP  
Log Pass (up) 3-Jul-2007 14:43 000:01 2714.9 - 2698.2 PERFO\_034LUP  
Log Pass (up) 3-Jul-2007 14:46 000:04 2710.3 - 2658.2 PERFO\_035LUP  
Log Pass (down) 3-Jul-2007 14:51 000:02 2672.5 - 2727.2 PERFO\_036LDP  
Log Pass (up) 3-Jul-2007 14:54 001:00 2726.9 - 2664.3 PERFO\_037LUP  
Station Log 3-Jul-2007 14:56 000:53 2717.1 - 8.0 PERFO\_038LTP

**Schlumberger**

## Gun Shoot Pass

MAXIS Field Log



TIME	DEGF	PSIA
4320.0	210.27	2612.666
4260.0	210.32	2612.108
4200.0	210.36	2613.482
4140.0	210.44	2612.298
4080.0	210.53	2613.917
4020.0	210.66	2613.488
3960.0	210.80	2613.982
3900.0	210.99	2614.052
3840.0	211.20	2613.869
3780.0	211.48	2613.821
3720.0	211.88	2613.671
3660.0	212.43	2613.571
3600.0	213.05	2612.902
3540.0	213.37	2613.512
3480.0	213.76	2611.627
3420.0	214.26	2609.909
3360.0	214.95	2605.922
3300.0	215.85	2603.064
3240.0	217.34	2597.707
3180.0	222.85	2582.397
3120.0	208.92	2446.778
3060.0	208.97	2552.793
3000.0	209.01	2653.036
2940.0	209.01	2671.140
2880.0	209.01	2677.789
2820.0	209.00	2678.338
2760.0	208.99	2678.370
2700.0	208.99	2678.788
2640.0	208.99	2678.488
2580.0	208.99	2678.553
2520.0	208.98	2678.676
2460.0	208.97	2678.272
2400.0	208.97	2678.500
2340.0	208.96	2678.558
2280.0	208.95	2678.324
2220.0	208.95	2678.194
2160.0	208.94	2678.390
2100.0	208.93	2678.285
2040.0	208.93	2678.233
1980.0	208.93	2677.968
1920.0	208.92	2678.050
1860.0	208.92	2677.844
1800.0	208.92	2677.954
1740.0	208.92	2677.590
1680.0	208.93	2677.746
1620.0	208.95	2677.734
1560.0	208.97	2677.930
1500.0	209.00	2677.653
1440.0	209.04	2677.832
1380.0	209.07	2677.675
1320.0	209.08	2677.431
1260.0	209.07	2677.572
1200.0	209.07	2677.482



# Output DLIS Files

DEFAULT

PERFO\_037LUP

FN:36

PRODUCER

03-Jul-2007 14:54

## OP System Version: 14C0-302

MCM

MWP\_GUN

14C0-302

MWPT-CA

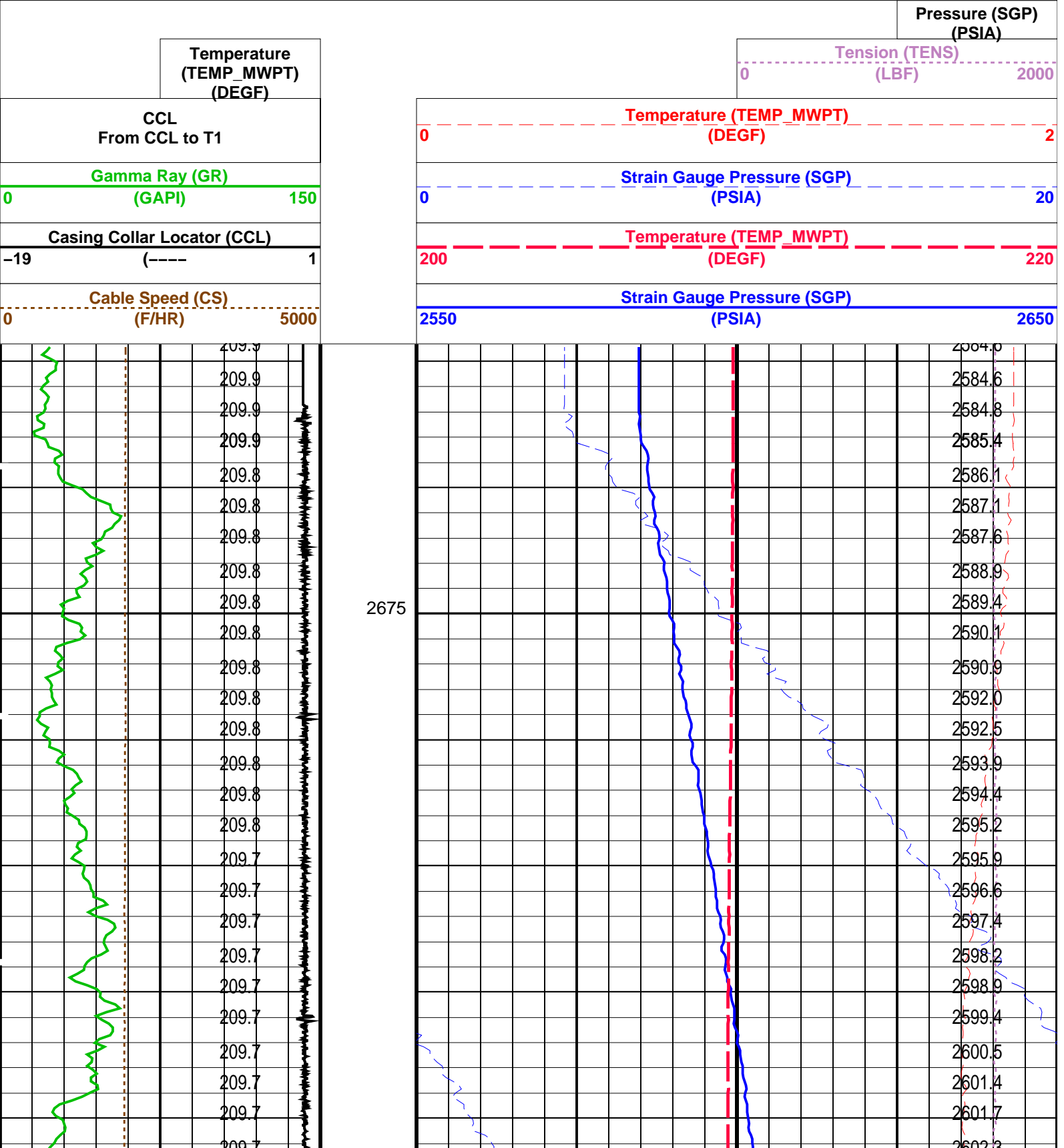
14C0-302

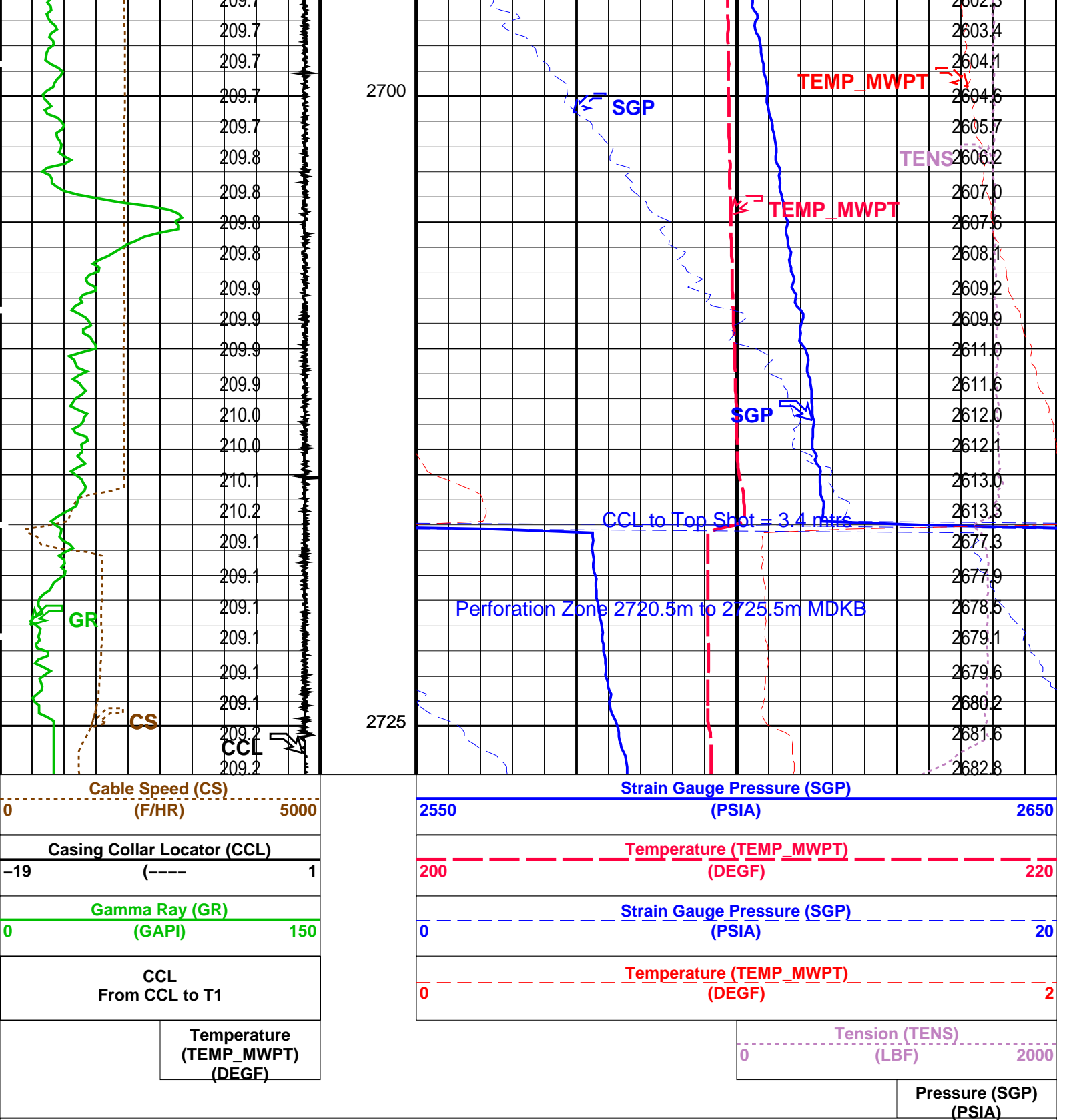
MWGT-AA

14C0-302

### PIP SUMMARY

Time Mark Every 60 S





PIP SUMMARY		
Time Mark Every 60 S		
Parameters		
DLIS Name	Description	Value
MWPT-CA: MEASUREMENT WHILE PERFORATING TOOL		
DEVI_FL_CORR	Deviation Angle for Flow Line Correction	0 DEG
FLD	Flow Line Density	1 G/C3
MWPT_NULL_SOURCE	MWPT NULL Temperature Source	TEMS
MWPT_NULL_TEMP	MWPT NULL Temperature	0.0 DEGC

Format: MWP    Vertical Scale: 1:200    Graphics File Created: 03-Jul-2007 14:54

OP System Version: 14C0-302

MCM

MWP_GUN	14C0-302	MWPT-CA	14C0-302
MWGT-AA	14C0-302		

Output DLIS Files

DEFAULT	PERFO_037LUP	FN:36	PRODUCER	03-Jul-2007 14:54
---------	--------------	-------	----------	-------------------

Schlumberger

Gun Correlation Pass

MAXIS Field Log

Company: Esso Australia Pty Ltd.	Well: A-16
----------------------------------	------------

Output DLIS Files

DEFAULT	PERFO_035LUP	FN:34	PRODUCER	03-Jul-2007 14:46
---------	--------------	-------	----------	-------------------

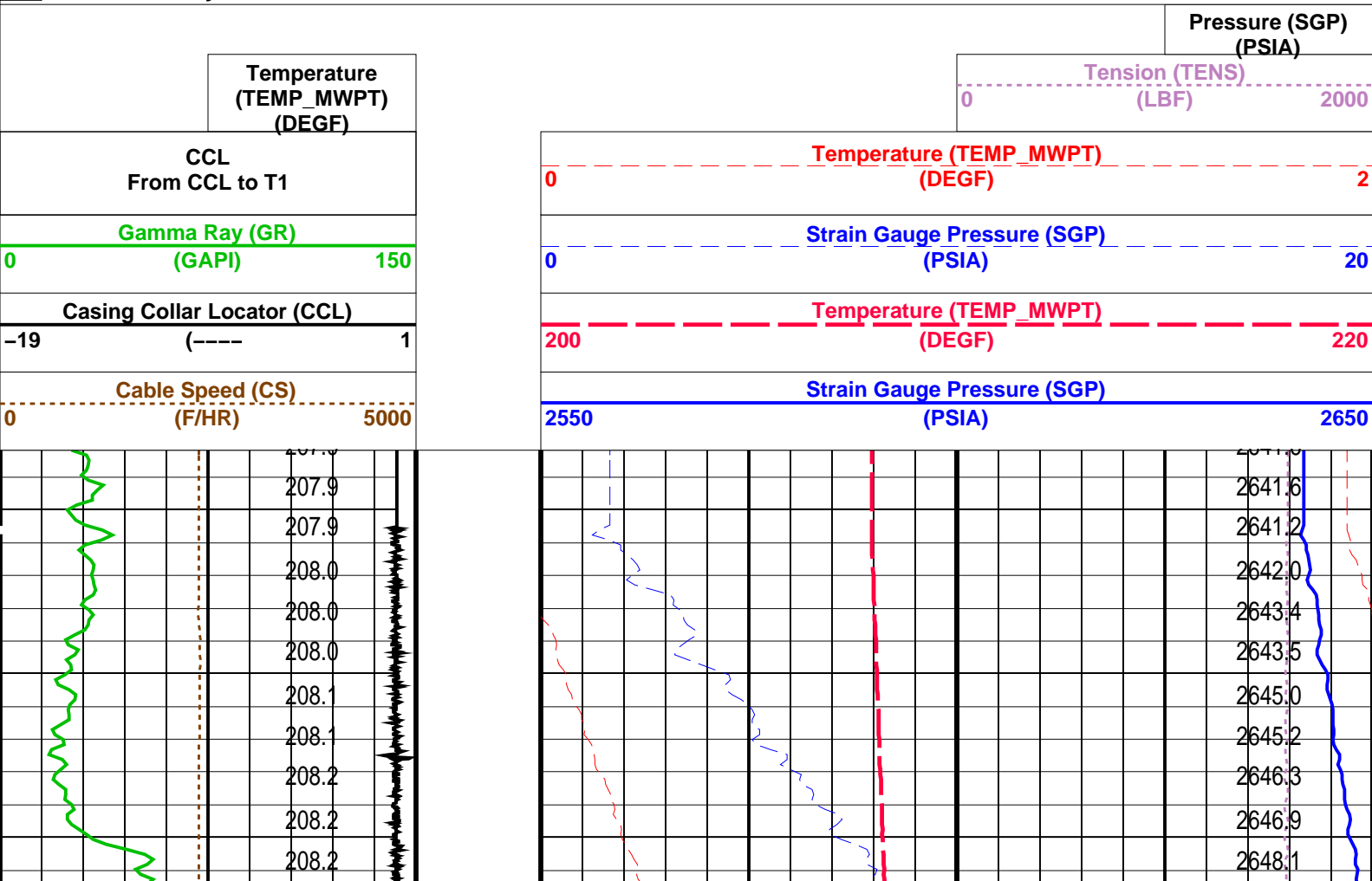
OP System Version: 14C0-302

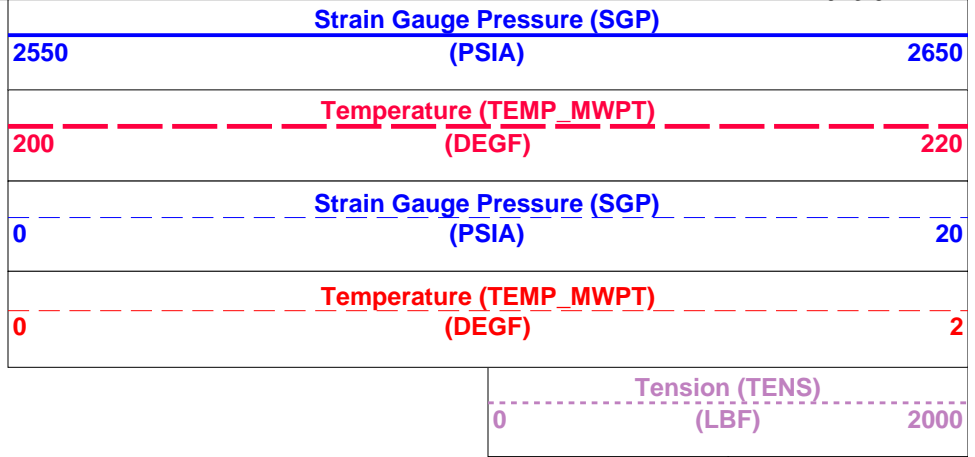
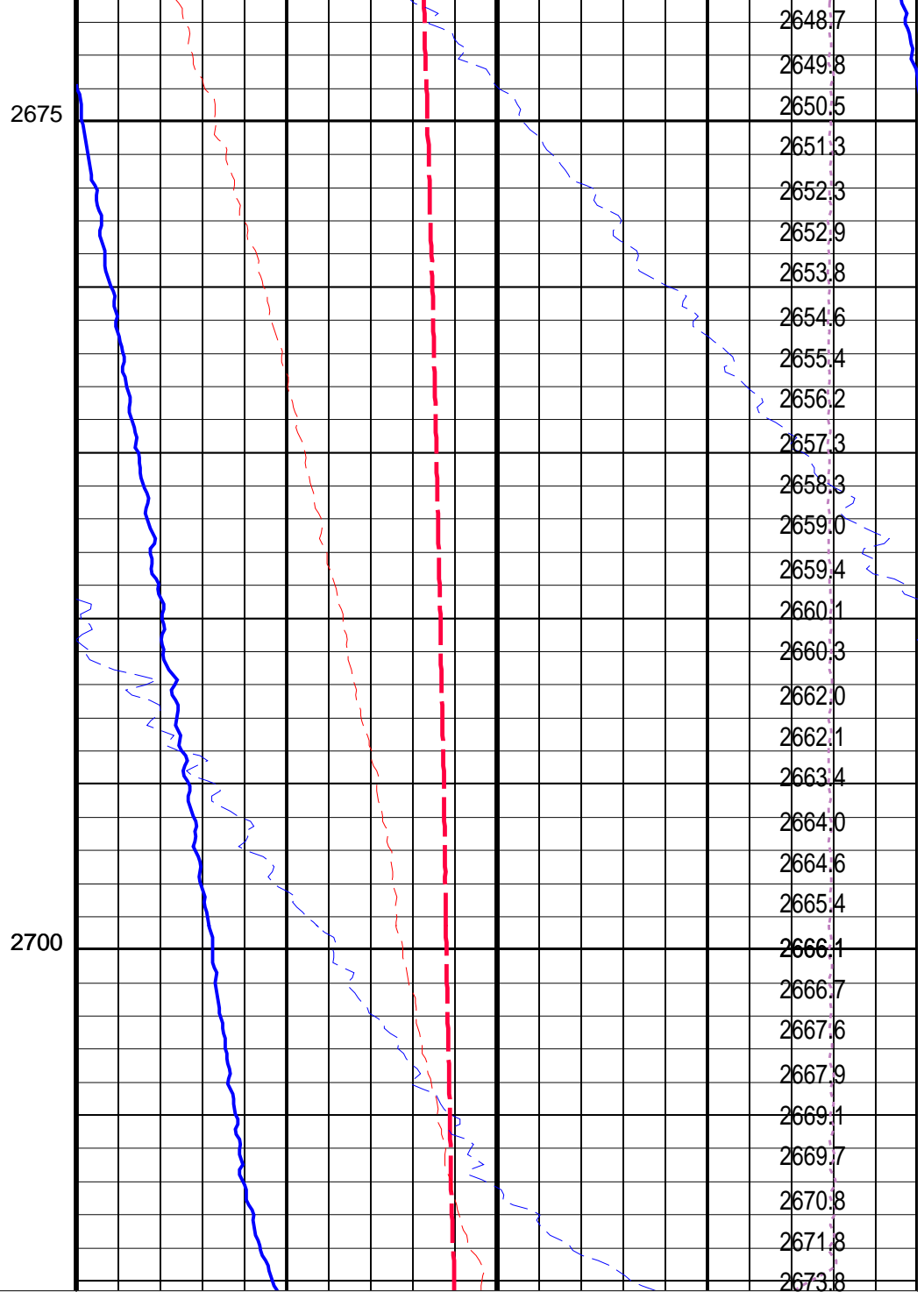
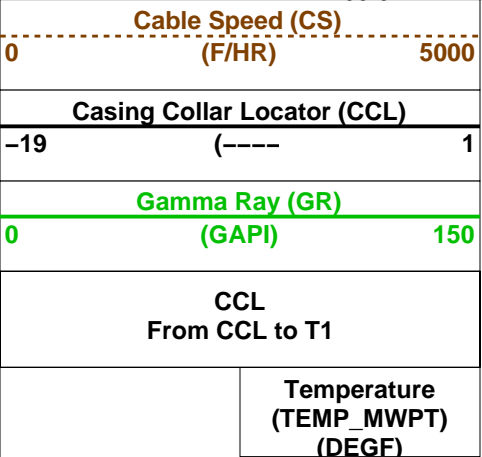
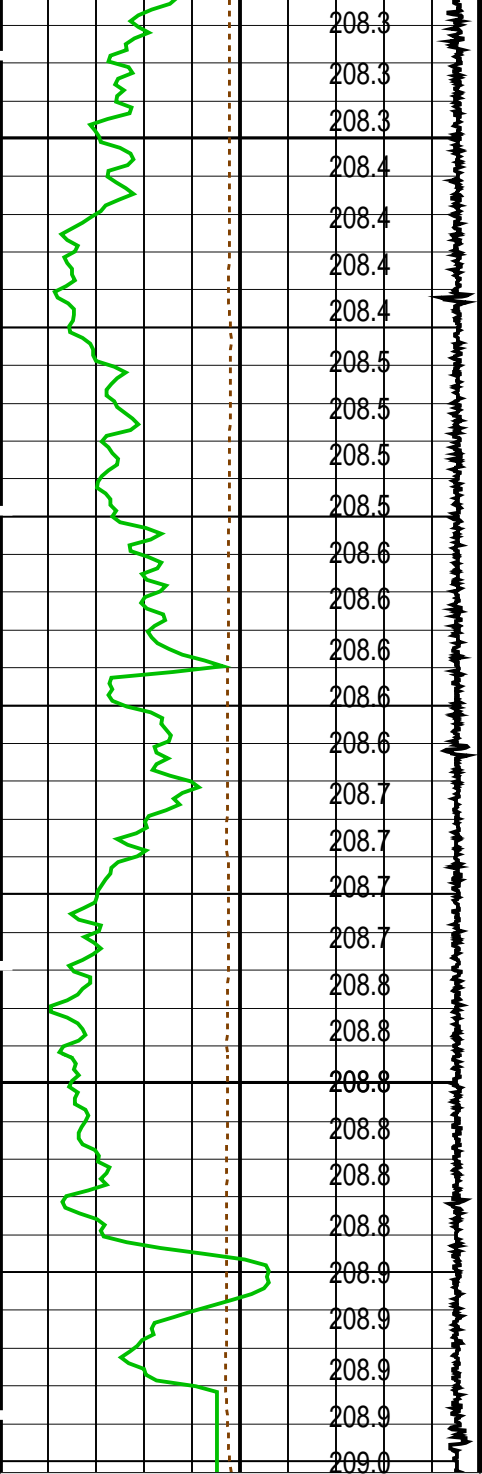
MCM

MWP_GUN	14C0-302	MWPT-CA	14C0-302
MWGT-AA	14C0-302		

PIP SUMMARY


Time Mark Every 60 S





Parameters			
DLIS Name	Description	Value	
MWPT-CA: MEASUREMENT WHILE PERFORATING TOOL			
DEVI_FL_CORR	Deviation Angle for Flow Line Correction	0	DEG
FLD	Flow Line Density	1	G/C3
MWPT_NULL_SOURCE	MWPT NULL Temperature Source	TEMS	
MWPT_NULL_TEMP	MWPT NULL Temperature	0.0	DEGC

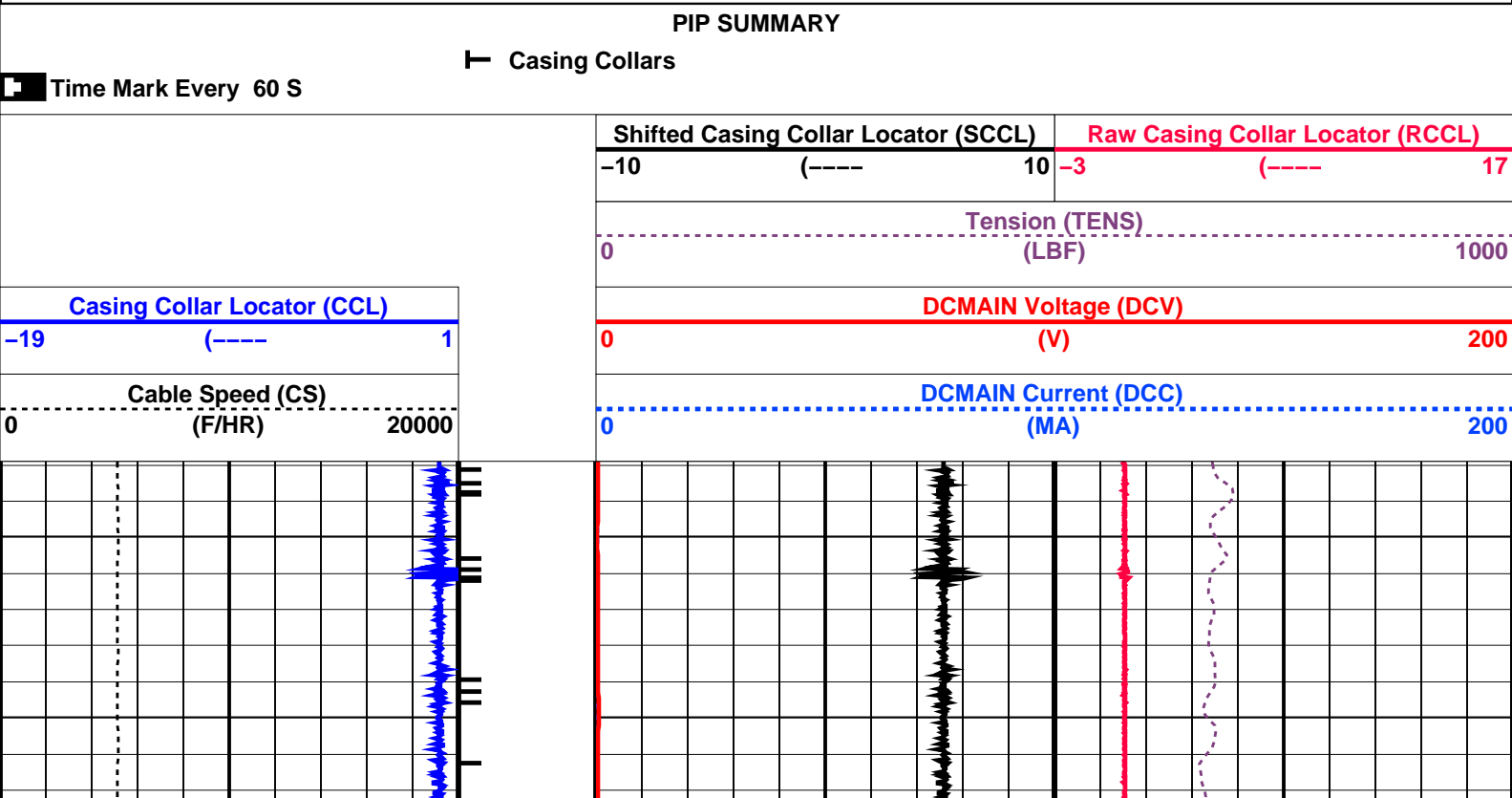
Format: MWP		Vertical Scale: 1:200		Graphics File Created: 03-Jul-2007 14:46	
OP System Version: 14C0-302					
MCM					
MWP_GUN	14C0-302	MWPT-CA		14C0-302	
MWGT-AA	14C0-302				
Output DLIS Files					
DEFAULT	PERFO_035LUP	FN:34	PRODUCER	03-Jul-2007 14:46	

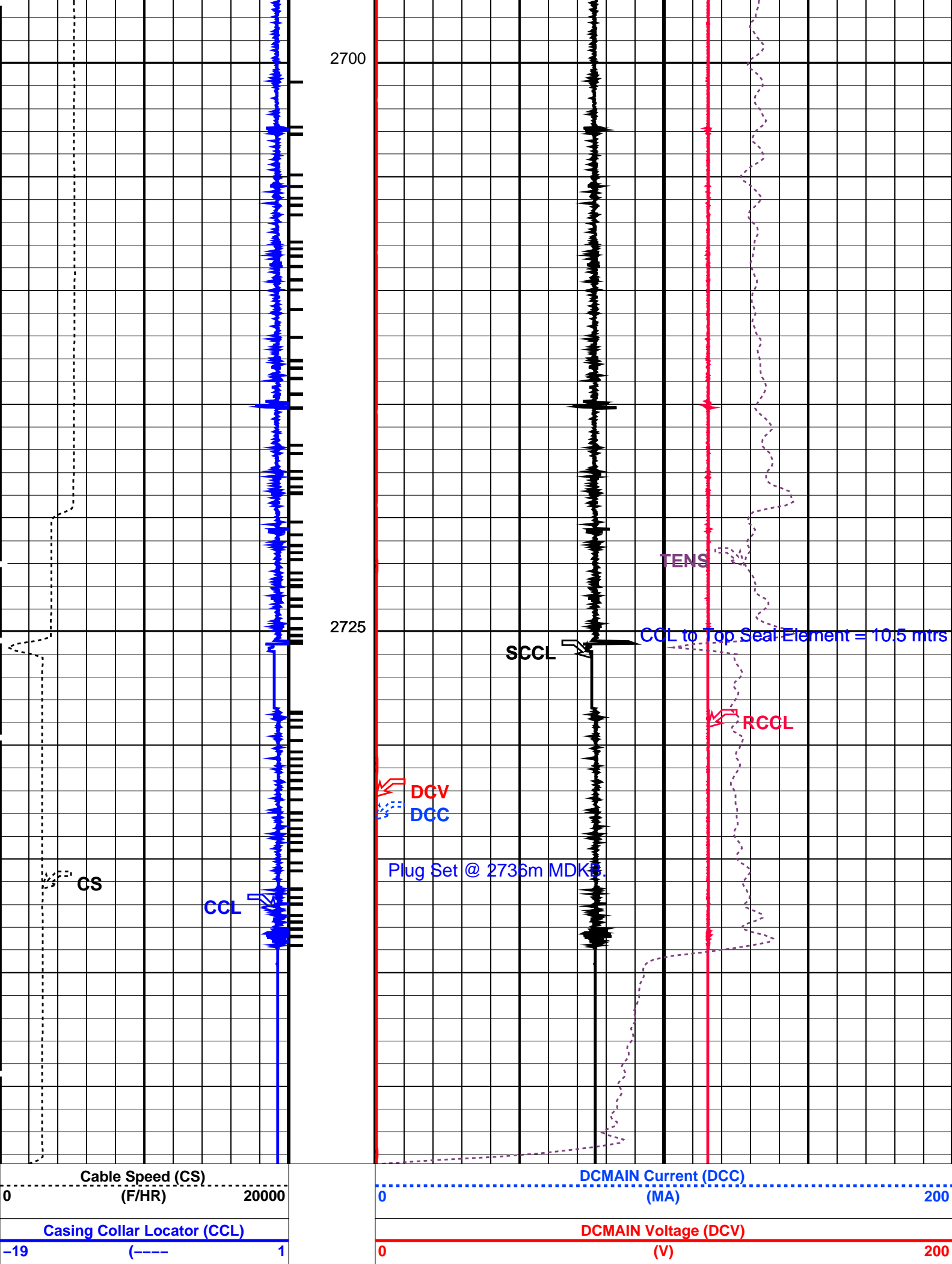


Plug Setting Pass

MAXIS Field Log

Output DLIS Files						
DEFAULT	PERFO_025LUP	FN:24	PRODUCER	01-Jul-2007 11:36	2748.4 M	2687.8 M
OP System Version: 14C0-302						
MCM						
CCL-L	14C0-302	SHM_GUN		14C0-302		





PIP SUMMARY

---

Time Mark Every 60 S
 Casing Collars

## Parameters

DLIS Name	Description	Value
	CCL-L: Casing Collar Locator	
CCLD	CCL reset delay	12 IN
CCLT	CCL Detection Level	0.3 V

Format: PERFO    Vertical Scale: 1:200    Graphics File Created: 01-Jul-2007 11:36

**OP System Version: 14C0-302**

## MCM

CCL-L	14C0-302	SHM_GUN	14C0-302
-------	----------	---------	----------

## Output DLIS Files

DEFAULT	PERFO_025LUP	FN:24	PRODUCER	01-Jul-2007 11:36
---------	--------------	-------	----------	-------------------

# Schlumberger

## Plug Correlation Pass

MAXIS Field Log

## Output DLIS Files

DEFAULT	PERFO_023LUP	FN:22	PRODUCER	01-Jul-2007 11:28	2741.5 M	2671.0 M
---------	--------------	-------	----------	-------------------	----------	----------

**OP System Version: 14C0-302**

## MCM

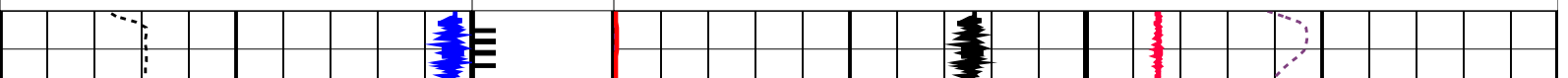
CCL-L	14C0-302	SHM_GUN	14C0-302
-------	----------	---------	----------

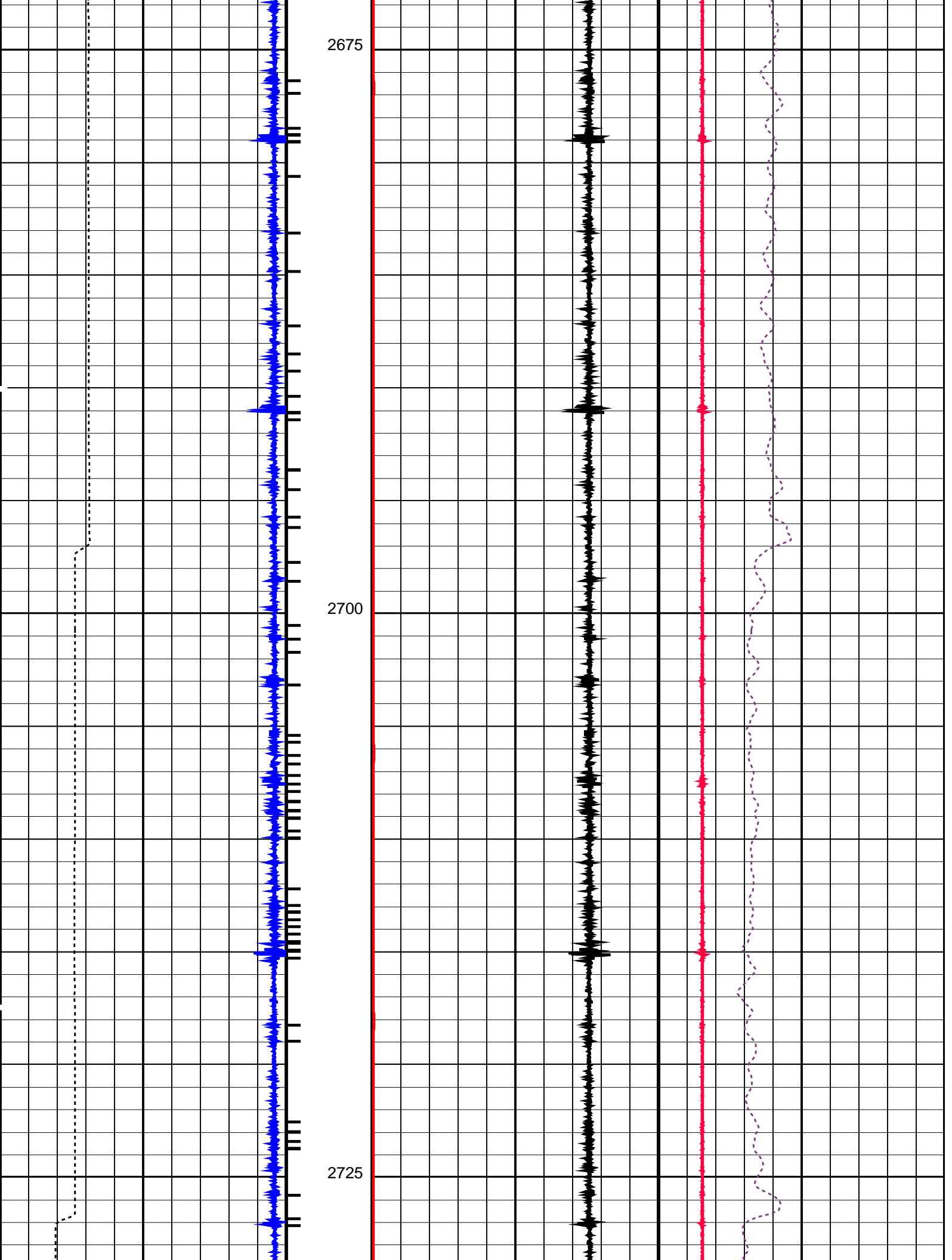
## PIP SUMMARY

## └─ Casing Collars

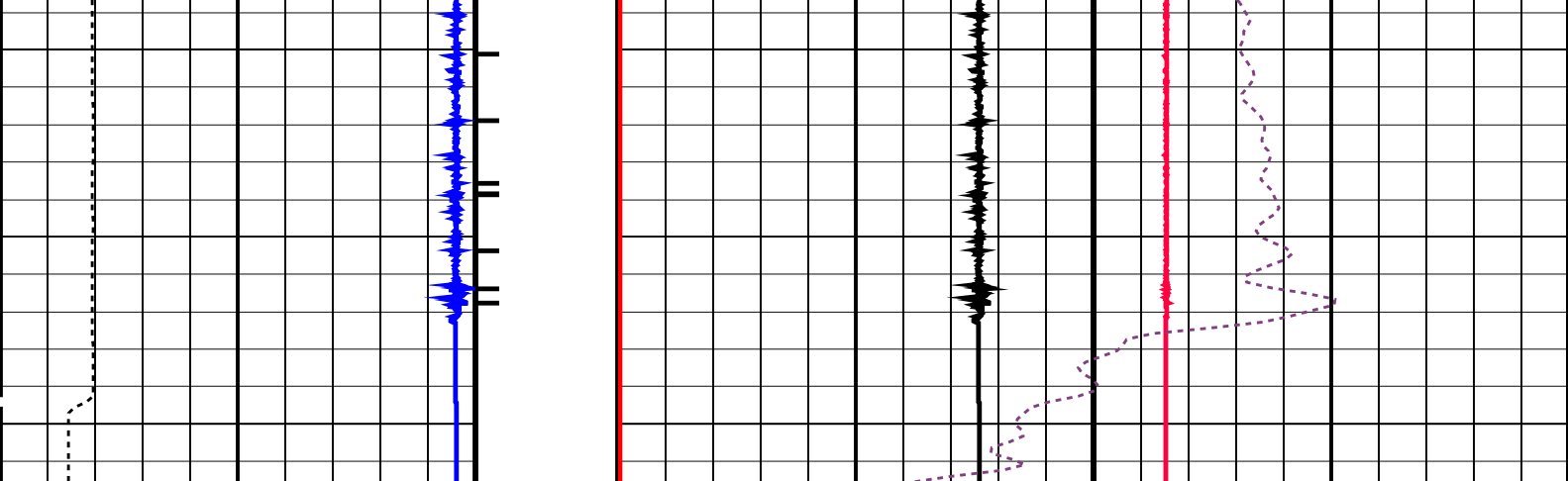
**Time Mark Every 60 S**

		Shifted Casing Collar Locator (SCCL)	Raw Casing Collar Locator (RCCL)
	-10	(----) 10	-3 (----) 17
		Tension (TENS) (LBF)	
	0		1000
Casing Collar Locator (CCL)		DCMAIN Voltage (DCV)	
-19	(----)	0 (V)	200
		DCMAIN Current (DCC)	
Cable Speed (CS) (F/HR)	0	0 (MA)	200









Cable Speed (CS) (F/HR)020000		DCMAIN Current (DCC) (MA)0200	
Casing Collar Locator (CCL) -19 (----) 1		DCMAIN Voltage (DCV) (V)0200	
		Tension (TENS) (LBF)01000	
Shifted Casing Collar Locator (SCCL) -10 (----) 10		Raw Casing Collar Locator (RCCL) -3 (----) 17	

PIP SUMMARY

Time Mark Every 60 S


Casing Collars

Parameters		
DLIS Name	Description	Value
CCLD	CCL-L: Casing Collar Locator	12 IN
CCLT	CCL reset delay	0.3 V
CCLT	CCL Detection Level	

Format: PERFO Vertical Scale: 1:200 Graphics File Created: 01-Jul-2007 11:28

OP System Version: 14C0-302			
MCM			
CCL-L	14C0-302	SHM_GUN	14C0-302

Output DLIS Files			
DEFAULT	PERFO_023LUP	FN:22	PRODUCER 01-Jul-2007 11:28



Dummy Plug Pass

MAXIS Field Log

Input DLIS Files					
DEFAULT	PSP_016LUP	FN:15	PRODUCER	01-Jul-2007 08:34	2792.9 M 2634.2 M

Output DLIS Files

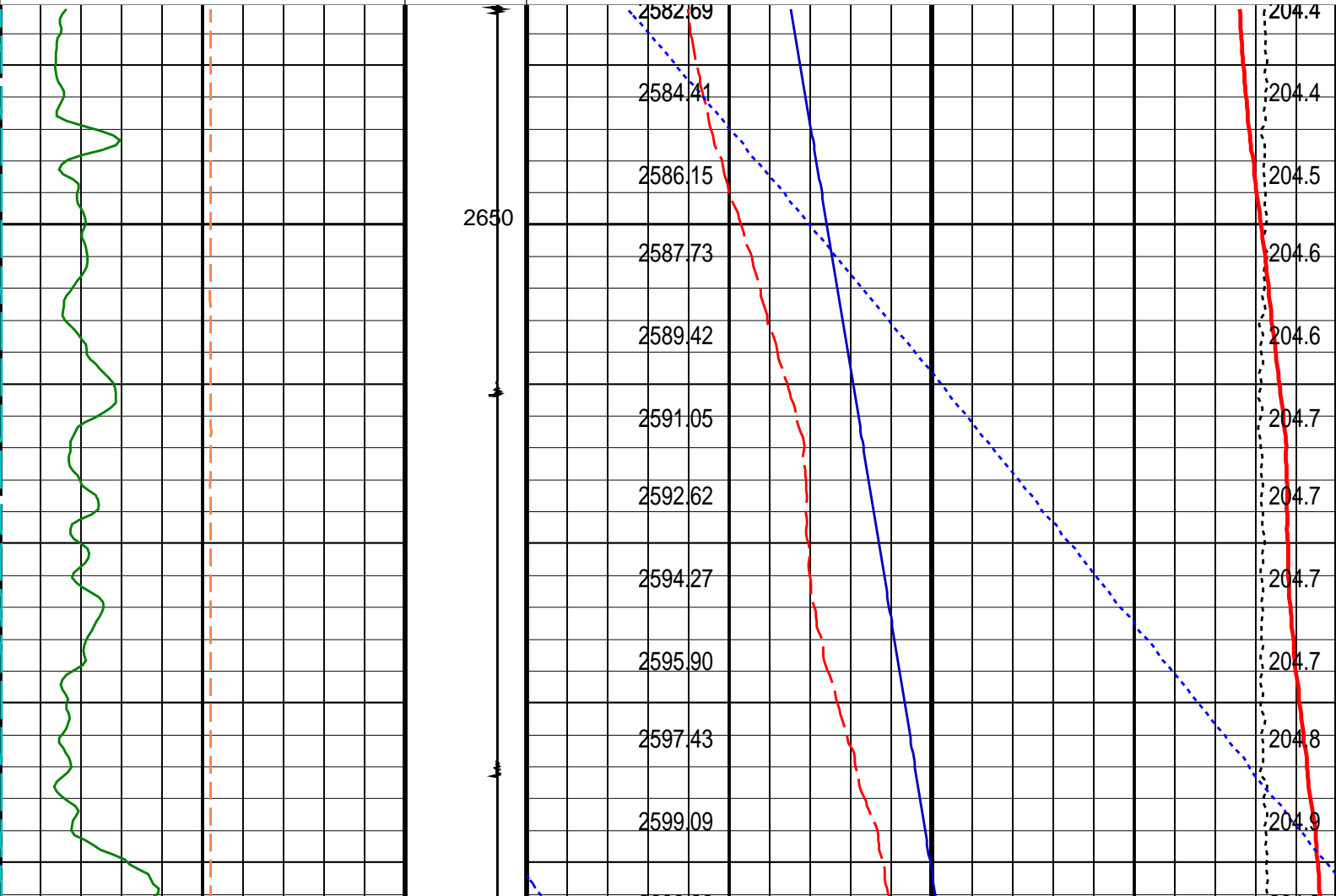
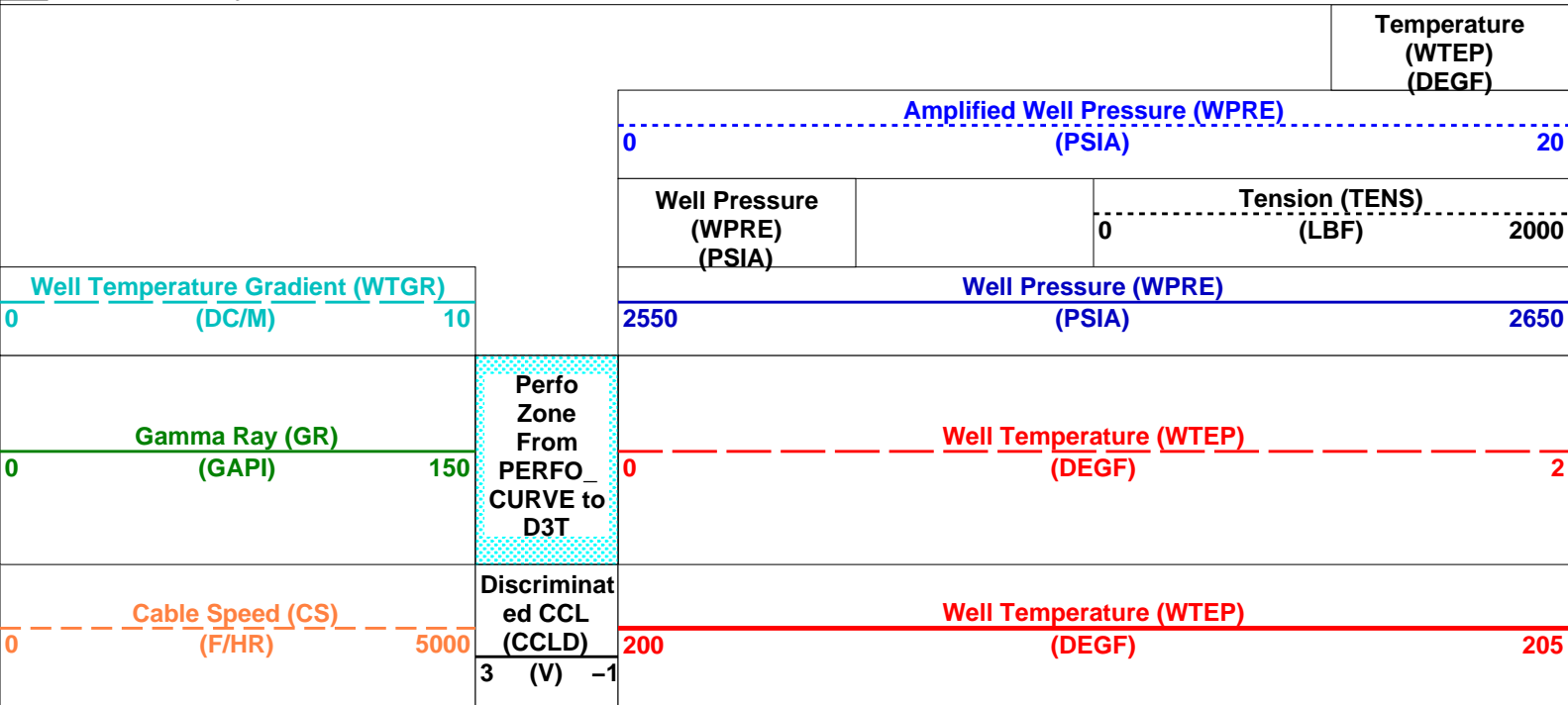
DEFAULT PSP\_017PUP FN:16 PRODUCER 01-Jul-2007 08:48 2801.3 M 2643.1 M

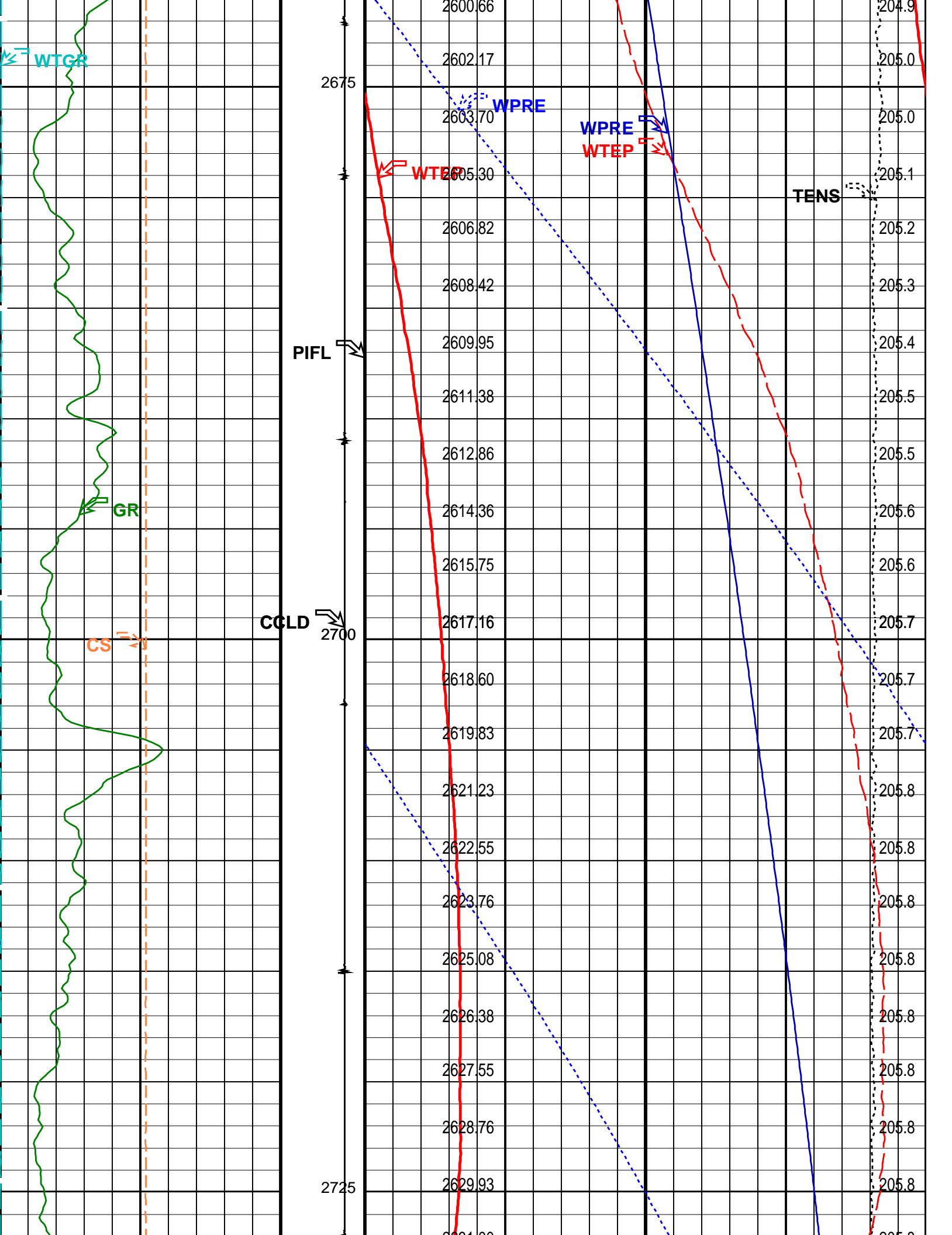
OP System Version: 14C0-302  
MCM

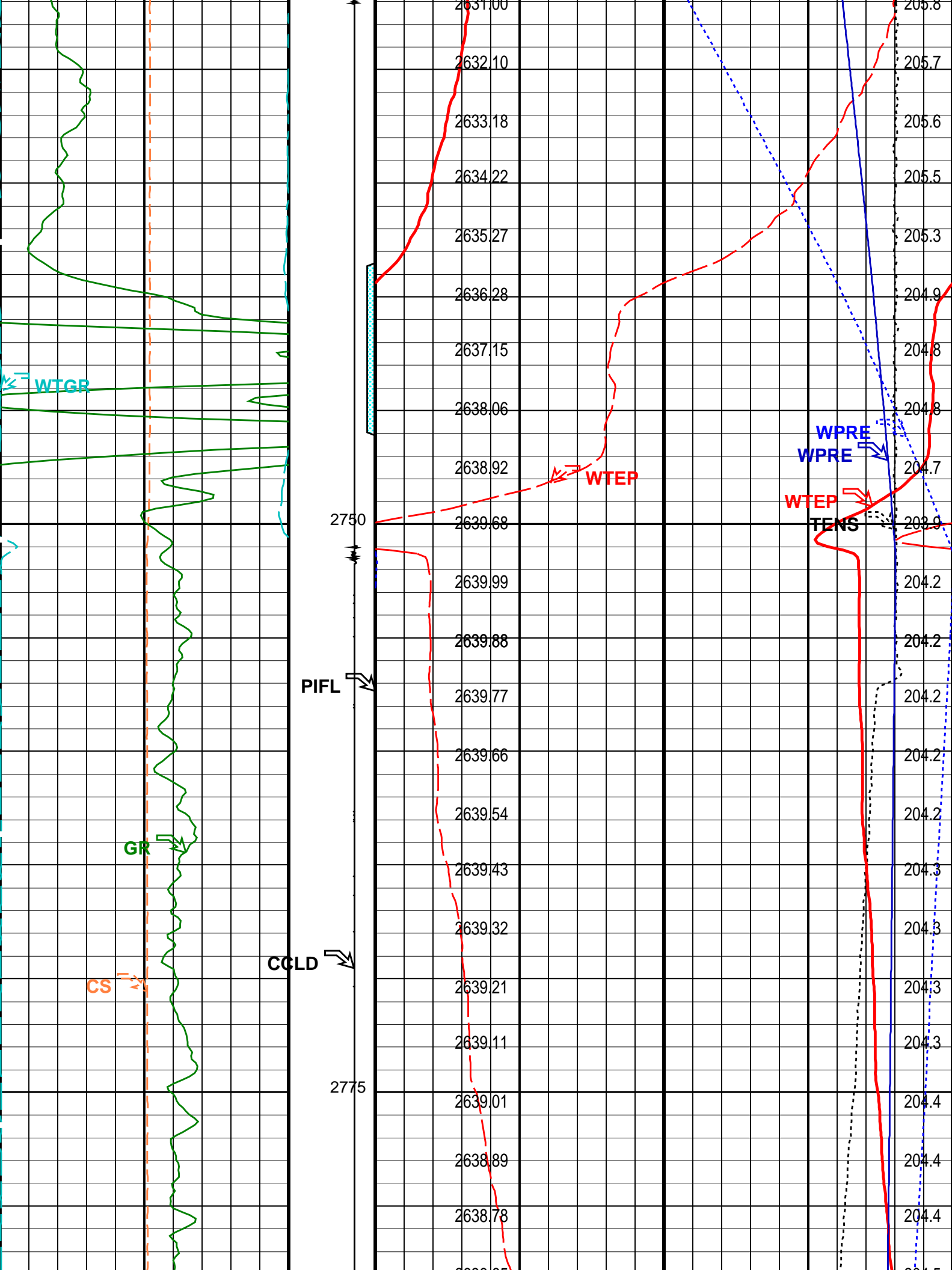
PSPT-B 14C0-302

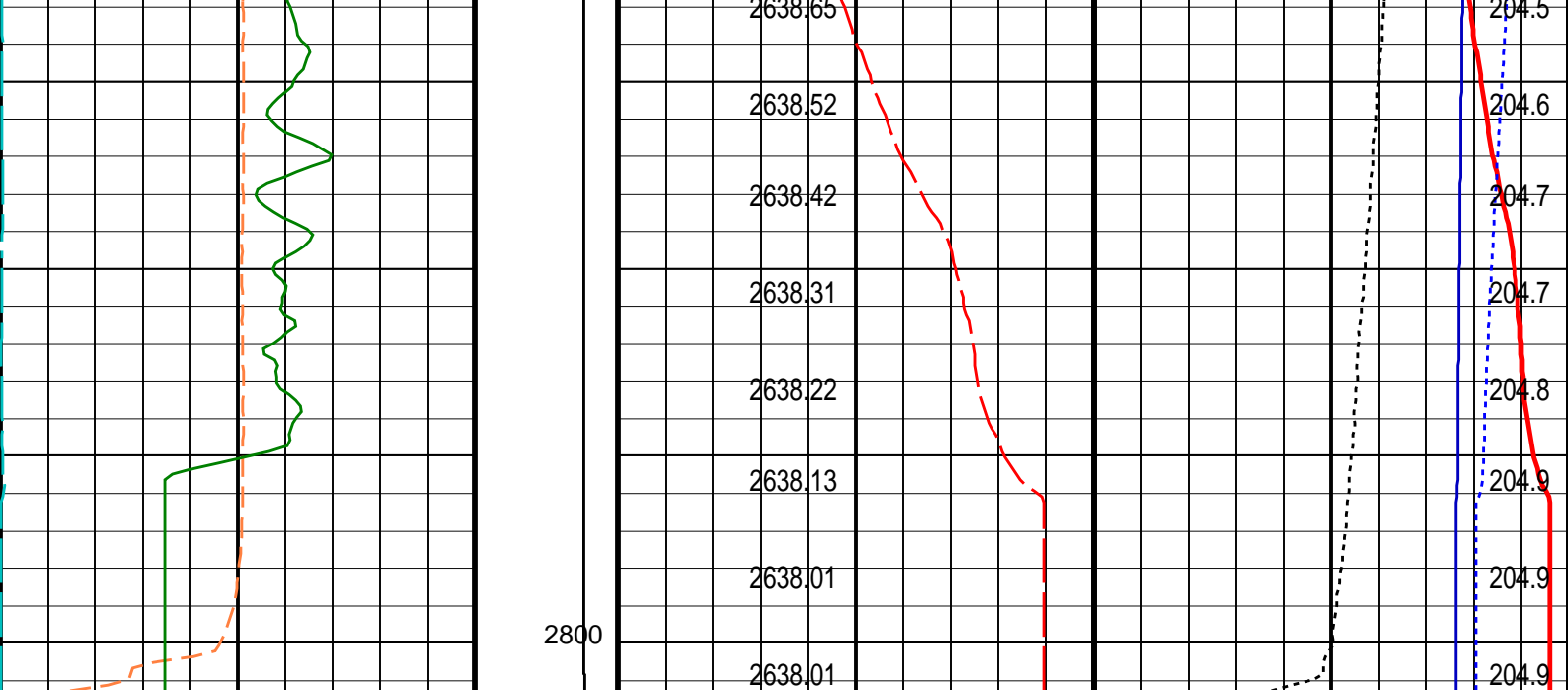
PIP SUMMARY

Time Mark Every 60 S









Cable Speed (CS) (F/HR)		Discriminat ed CCL (CCLD) 3 (V) -1	Well Temperature (WTEP) (DEGF)	
0	5000		200	205
Gamma Ray (GR) (GAPI)		Perfo Zone From PERFO_ CURVE to D3T	Well Temperature (WTEP) (DEGF)	
0	150		0	2
Well Temperature Gradient (WTGR) (DC/M)			Well Pressure (WPRE) (PSIA)	
0	10	2550 2650		
		Well Pressure (WPRE) (PSIA)	Tension (TENS) (LBF)	
			0	2000
		Amplified Well Pressure (WPRE) (PSIA)		
		0 20		
		Temperature (WTEP) (DEGF)		

PIP SUMMARY

Time Mark Every 60 S

Format: PSP\_1 Vertical Scale: 1:200 Graphics File Created: 01-Jul-2007 08:48

OP System Version: 14C0-302

MCM

PSPT-B 14C0-302

Parameters		
DLIS Name	Description	Value
DO PP	System and Miscellaneous Depth Offset for Playback Playback Processing	8.4 M NORMAL

Input DLIS Files						
DEFAULT	PSP_016LUP	FN:15	PRODUCER	01-Jul-2007 08:34	2792.9 M	2634.2 M

Output DLIS Files						
DEFAULT	PSP_017DUP	FN:16	PRODUCER	01-Jul-2007 08:48		

Company: **Esso Australia Pty Ltd.**

**Schlumberger**

Well: **A-16**

Field: **Bream A**

Rig : **Prod4 / Crane**

Country: **Australia**

2 1/8" Phased Powerjet

Mwpt Perforation

7" HPI Plug