

Company: Esso Australia Pty Ltd.

Well: A-13a
Field: Bream A
Rig : Prod4 / Crane Country: Australia

Prod4 / Crane

Rig :
Field:
Location:
Well:
Company:

Bream A
Gippsland
A-13a
Esso Australia Pty Ltd.

2 1/8" Powerjet Perforation
4 1/2"HPI Plug
Setting Record

LOCATION

Gippsland
Basin
Bass Strait

Elev.: K.B. 32.2 m
G.L. -59 m
D.F. 32.2 m

Permanent Datum:
Log Measured From:
Drilling Measured From:

M.S.L.
D.F.
D.F.

Elev.: 0 m
32.2 m above Perm. Datum

State :
Victoria

Max. Well Deviation
65 deg

Longitude
147 46'15"E

Latitude
038 30'04"S

Logging Date				22-Jun-2007		
Run Number				2 thru4		
Depth Driller				2585 m		
Schlumberger Depth				2585 m		
Bottom Log Interval				2585 m		
Top Log Interval				2525 m		
Casing Fluid Type				Production Fluids		
Salinity						
Density						
Fluid Level				1070 m		
BIT/CASING/TUBING STRING						
Bit Size				6.000 in		
From						
To						
Casing/Tubing Size				4.500 in		
Weight				12.6 lbm/ft		
Grade				Vam-Ace		
From				2291.6 m		
To				2672 m		
Maximum Recorded Temperatures				98 degC		
Logger On Bottom				22-Jun-2007		12:30
Unit Number		Location		889	Prod4 / Ausl	
Recorded By				G Wright & S Gilbert.		
Witnessed By				B White & B Robinson.		

			Run 1	
Oil Density				
Water Salinity				
Gas Gravity				
Bo				
Bw				
1/Bg				
Bubble Point Pressure				
Bubble Point Temperature				
Solution GOR				
Maximum Deviation			65 deg	
CEMENTING DATA				
Primary/Squeeze			Primary	
Casing String No				
Lead Cement Type				
Volume				
Density				
Water Loss				
Additives				
Tail Cement Type				
Volume				
Density				
Water Loss				
Additives				
Expected Cement Top				
Logging Date				
Run Number				
Depth Driller				
Schlumberger Depth				
Bottom Log Interval				
Top Log Interval				
Casing Fluid Type				
Salinity				
Density				
Fluid Level				
BIT/CASING/TUBING STRING				
Bit Size				
From				
To				
Casing/Tubing Size				
Weight				
Grade				
From				
To				
Maximum Recorded Temperatures				
Logger On Bottom				
Unit Number		Location		
Recorded By				
Witnessed By				

DEPTH SUMMARY LISTING

Date Created: 18-JUN-2007 9:54:56

Depth System Equipment

Depth Measuring Device	Tension Device	Logging Cable
Type: IDW-EB Serial Number: 6373 Calibration Date: 04-Jan-2007 Calibrator Serial Number: 9 Calibration Cable Type: 2-32ZT Wheel Correction 1: -2 Wheel Correction 2: -4	Type: PSDS/OSDS Serial Number: 325357 Calibration Date: 10-Jun-2007 Calibrator Serial Number: 1174 Calibration Gain: 0.92 Calibration Offset: 199.00	Type: 2-32ZT Serial Number: 24425 Length: 6473.04 M Conveyance Method: Wireline Rig Type: Offshore_Fixed

Depth Control Parameters

Log Sequence:	Subsequent Log In the Well
Reference Log Name:	ExxonMobil correlation log.
Reference Log Run Number:	
Reference Log Date:	

Depth Control Remarks



















1. IDW-EB 6373 used as primary depth control.
2. Z chart used as secondary control.
3.

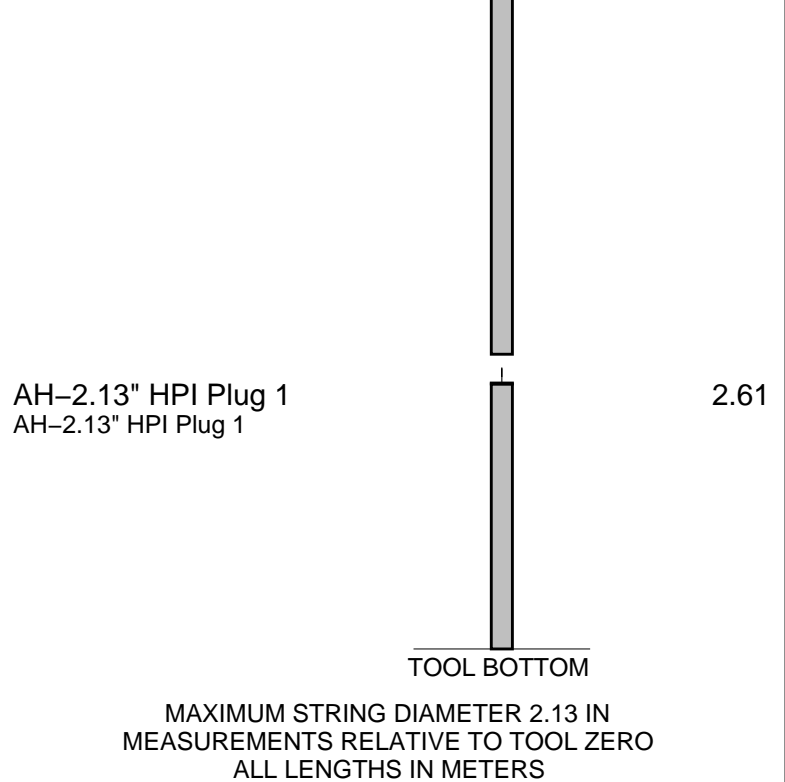
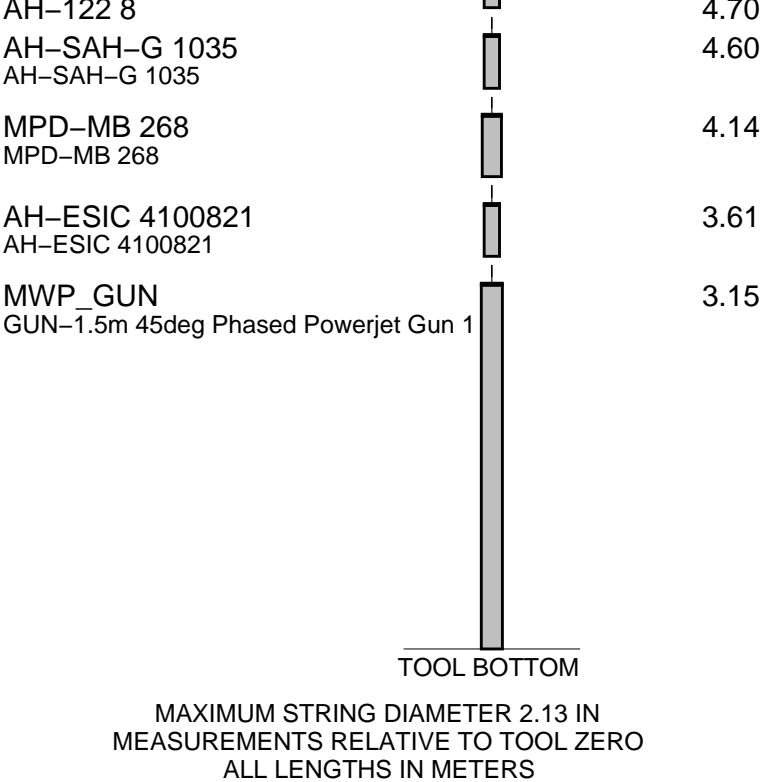
DISCLAIMER

THE USE OF AND RELIANCE UPON THIS RECORDED-DATA BY THE HEREIN NAMED COMPANY (AND ANY OF ITS AFFILIATES, PARTNERS, REPRESENTATIVES, AGENTS, CONSULTANTS AND EMPLOYEES) IS SUBJECT TO THE TERMS AND CONDITIONS AGREED UPON BETWEEN SCHLUMBERGER AND THE COMPANY, INCLUDING: (a) RESTRICTIONS ON USE OF THE RECORDED-DATA; (b) DISCLAIMERS AND WAIVERS OF WARRANTIES AND REPRESENTATIONS REGARDING COMPANY'S USE OF AND RELIANCE UPON THE RECORDED-DATA; AND (c) CUSTOMER'S FULL AND SOLE RESPONSIBILITY FOR ANY INFERENCE DRAWN OR DECISION MADE IN CONNECTION WITH THE USE OF THIS RECORDED-DATA.

OTHER SERVICES1
OS1: RST-C
OS2: Sigma Survey

REMARKS: RUN NUMBER 1
Log correlated to ExxonMobil composite supplied with logging program.
Maximum well deviation = 65 degrees at 1113m MDKB.
Objective: Perforate the well using a 1.5m 2 1/8" 45deg Phased Powerjet gun
over the interval 2573.4m to 2574.9m MDKB. Set a 4.5"HPI Plug with top of seal
@ 2578m MDKB.
Before Gun- SBHP: 2604 psia, SBHT: 209 degf.
After Gun- SBHP: 2602 psia, SBHT: 210 degf.
Top Shot @ 2573.4 m MDKB

DOWNHOLE EQUIPMENT			DOWNHOLE EQUIPMENT		
AH-SWBS-B 731 AH-SWBS-B 731		12.34	EQF-SWBS-B 761 EQF-SWBS-B 761		14.34
AH-SWBS-B 761 AH-SWBS-B 761		11.65	EQF-SWBS-B 762 EQF-SWBS-B 762		13.66
AH-SWBS-B 762 AH-SWBS-B 762		10.96	EQF-SWBS-B 763 EQF-SWBS-B 763		12.97
AH-SWBS-B 763 AH-SWBS-B 763		10.28	MH-SWHS-B 726 CCL-L 4191 CCL-L 4191		12.29
MH-SWHS-A 726 MH-SWHS-A 726		9.59	SHM_GUN 1 AH-X-Over SLB-GO 1		11.50
AH-124 1001		9.26	AH-Electro Hydraulic Actuator 1 AH-Electro Hydraulic Actuator 1		11.35
MWGT-AA 69 MWPG-AA 69 MWGH-AA 69		9.06	AH-Filter Section 1 AH-Filter Section 1		10.80
MWPT-CA 74 MWPH-AA 74 MWPS-AA 74		8.08	AH-Snorkel Section 1 AH-Snorkel Section 1		10.02
AH-Flex Joint 41 AH-Flex Joint 41		5.26	AH-Hydraulic Section 2 AH-Hydraulic Section 2		7.49



Production String	(in)		(m)	Well Schematic	(m)	(in)		Casing String
	OD	ID	MD		MD	OD	ID	
Tubing Hanger	9.500	3.500	14.0		14.1	10.000	7.000	Casing String Liner Hanger
Shut-in Valve	3.500		463.0		14.1	10.750		
Gas Lift Mandrel	3.500		1135.0					
					1283.9	10.750		Casing Shoe

Log Pass (down) 21-Jun-2007 14:00 001:36 0.5 - 2348.5 PERFO_040LUP
Log Pass (up) 21-Jun-2007 15:36 000:03 2349.1 - 2315.9 PERFO_041LUP
Log Pass (up) 21-Jun-2007 15:40 000:01 2330.3 - 2321.4 PERFO_042LUP
Log Pass (down) 21-Jun-2007 15:41 000:10 2322.6 - 2575.2 PERFO_043LDP
Log Pass (up) 21-Jun-2007 15:51 000:02 2574.8 - 2547.4 PERFO_044LUP
Log Pass (up) 21-Jun-2007 15:55 000:03 2573.9 - 2536.5 PERFO_045LUP
Log Pass (up) 21-Jun-2007 15:59 003:05 2576.3 - 2525.9 PERFO_046LUP
Log Pass (up) 21-Jun-2007 19:06 000:01 2573.1 - 2571.4 PERFO_047LUP
Log Pass (up) 21-Jun-2007 19:08 000:06 2577.2 - 2523.0 PERFO_048LUP
Log Pass (up) 21-Jun-2007 19:14 001:01 2505.3 - -9.3 PERFO_049LUP
Simulated Log 22-Jun-2007 9:35 000:07 PERFO_052LUP
Log Pass (down) 22-Jun-2007 10:56 001:08 -3.4 - 1822.4 PERFO_057LDP
Log Pass (down) 22-Jun-2007 12:05 000:26 1790.5 - 2341.9 PERFO_058LDP
Log Pass (up) 22-Jun-2007 12:31 000:02 2345.6 - 2320.0 PERFO_059LUP
Log Pass (down) 22-Jun-2007 12:33 000:10 2320.0 - 2557.9 PERFO_060LDP
Log Pass (up) 22-Jun-2007 12:43 000:02 2557.9 - 2537.3 PERFO_061LUP
Log Pass (up) 22-Jun-2007 12:46 000:06 2572.1 - 2522.4 PERFO_062LUP
Log Pass (up) 22-Jun-2007 12:55 000:25 2572.4 - 2535.3 PERFO_063LUP
Log Pass (down) 22-Jun-2007 13:21 000:03 2538.8 - 2570.2 PERFO_064LDP
Log Pass (up) 22-Jun-2007 13:24 000:05 2570.2 - 2516.9 PERFO_065LUP

Schlumberger

HPI Plug Tagged @ 2578m MDKB

MAXIS Field Log

Output DLIS Files

DEFAULT PERFO_065LUP FN:64 PRODUCER 22-Jun-2007 13:24

OP System Version: 14C0-302

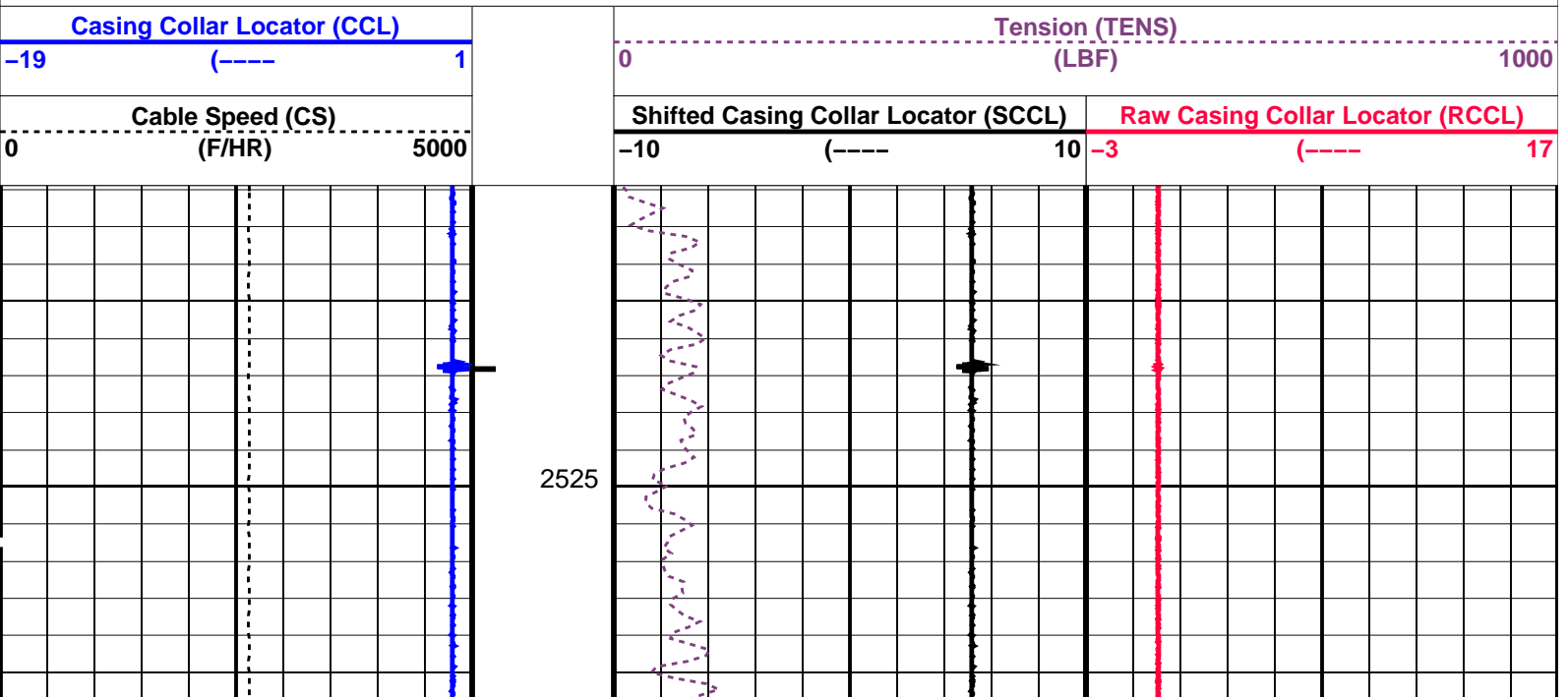
MCM

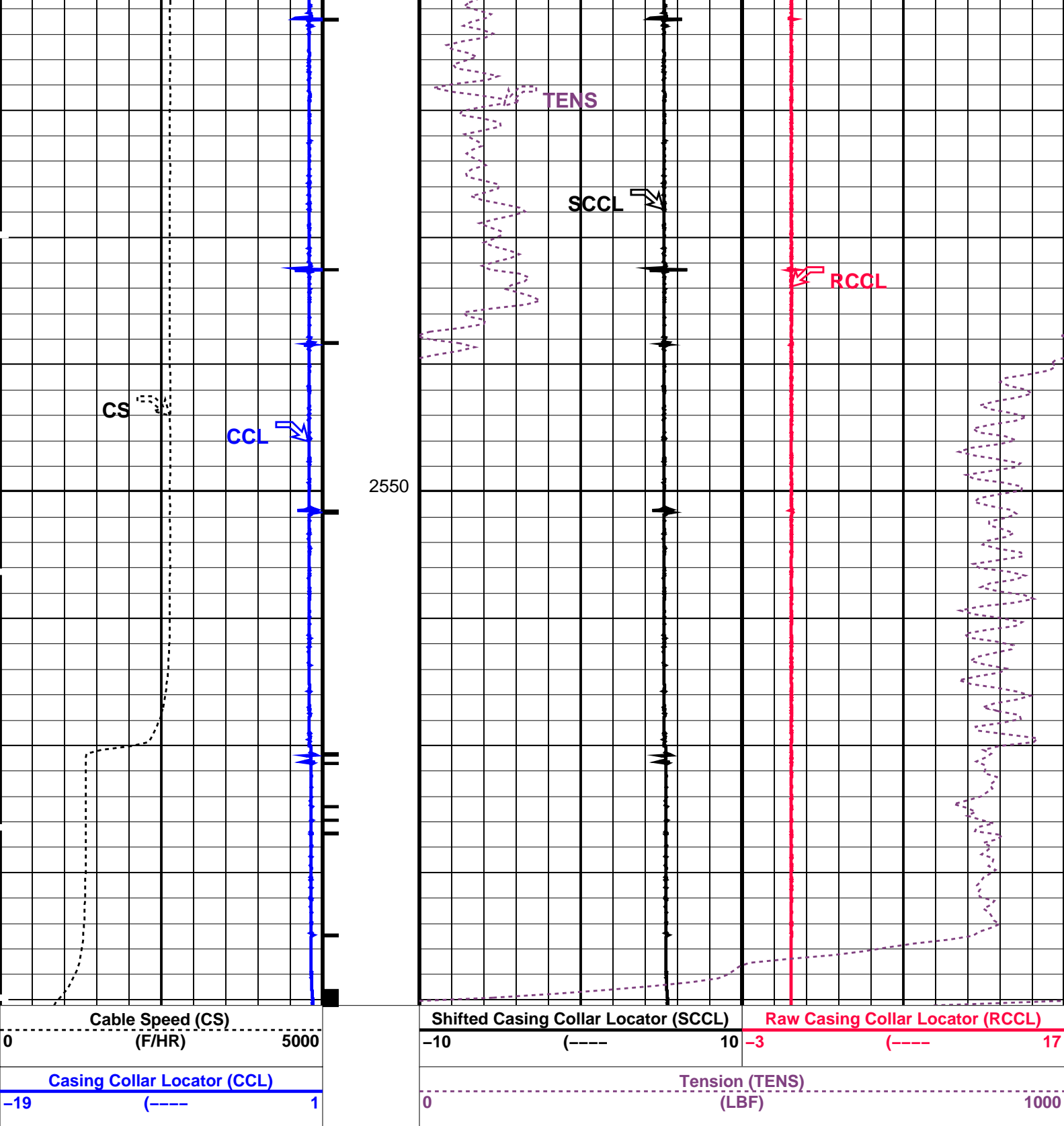
SHM_GUN 14C0-302 CCL-L 14C0-302

PIP SUMMARY

← Casing Collars

Time Mark Every 60 S





PIP SUMMARY

Time Mark Every 60 S

Casing Collars

Parameters		
DLIS Name	Description	Value
CCL-L: Casing Collar Locator		
CCLD	CCL reset delay	12 IN
CCLT	CCL Detection Level	0.3 V
Format: PERFO Vertical Scale: 1:200 Graphics File Created: 22-Jun-2007 13:24		

SHM_GUN	14C0-302	MCM	CCL-L	14C0-302
Output DLIS Files				
DEFAULT	PERFO_065LUP	FN:64	PRODUCER	22-Jun-2007 13:24

Schlumberger

4 1/2" HPI Plug
Set @ 2578m MDKB

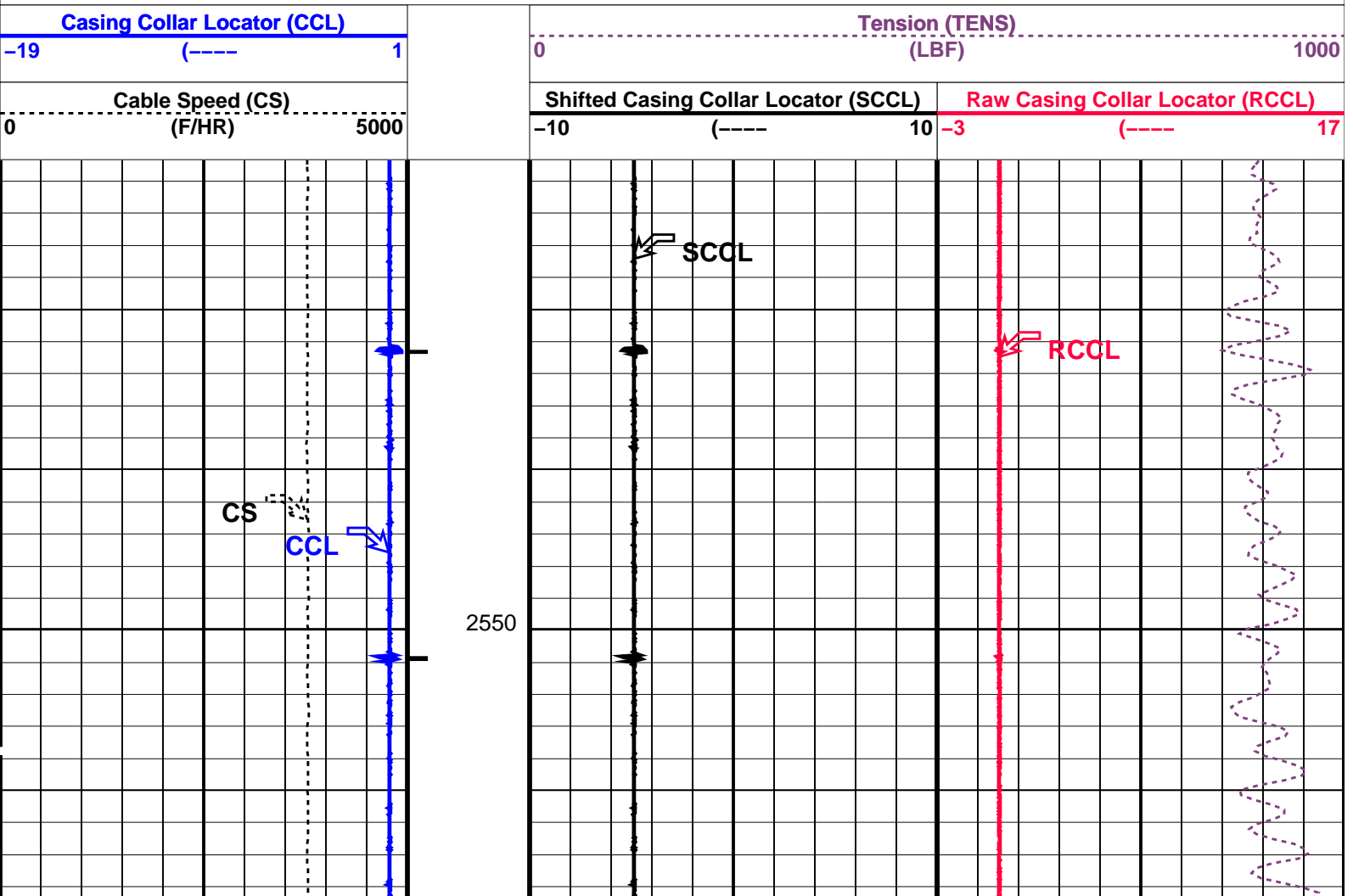
MAXIS Field Log

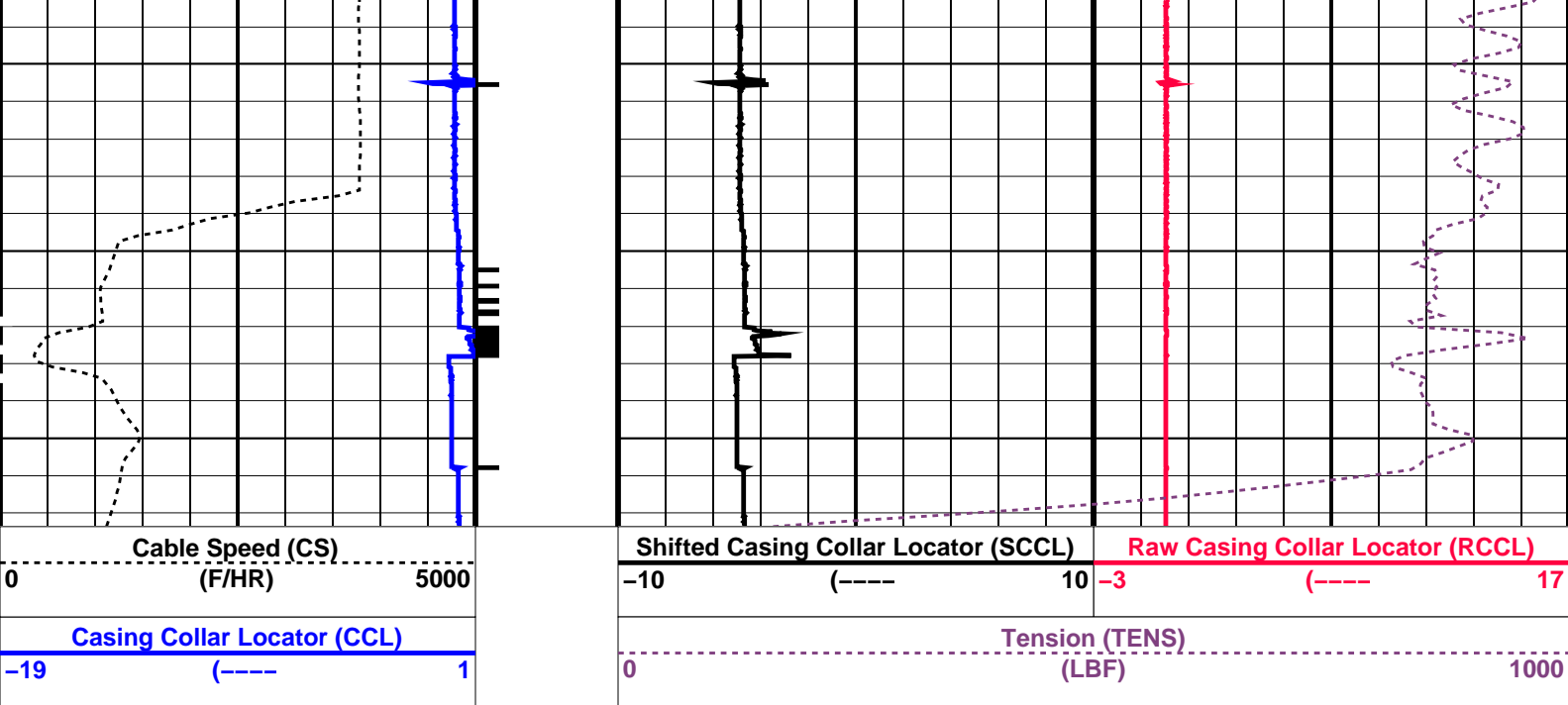
Output DLIS Files				
DEFAULT	PERFO_063LUP	FN:62	PRODUCER	22-Jun-2007 12:55
OP System Version: 14C0-302				
MCM				
SHM_GUN	14C0-302	CCL-L	14C0-302	

PIP SUMMARY

└─ Casing Collars

Time Mark Every 60 S






PIP SUMMARY

Time Mark Every 60 S

Parameters			
DLIS Name	Description	Value	
CCL-L	Casing Collar Locator	12	IN
CCLD	CCL reset delay	0.3	V
CCLT	CCL Detection Level		
Format: PERFO		Vertical Scale: 1:200	
		Graphics File Created: 22-Jun-2007 12:55	

OP System Version: 14C0-302			
MCM			
SHM_GUN	14C0-302	CCL-L	14C0-302

Output DLIS Files			
DEFAULT	PERFO_063LUP	FN:62	PRODUCER 22-Jun-2007 12:55



Plug Correlation

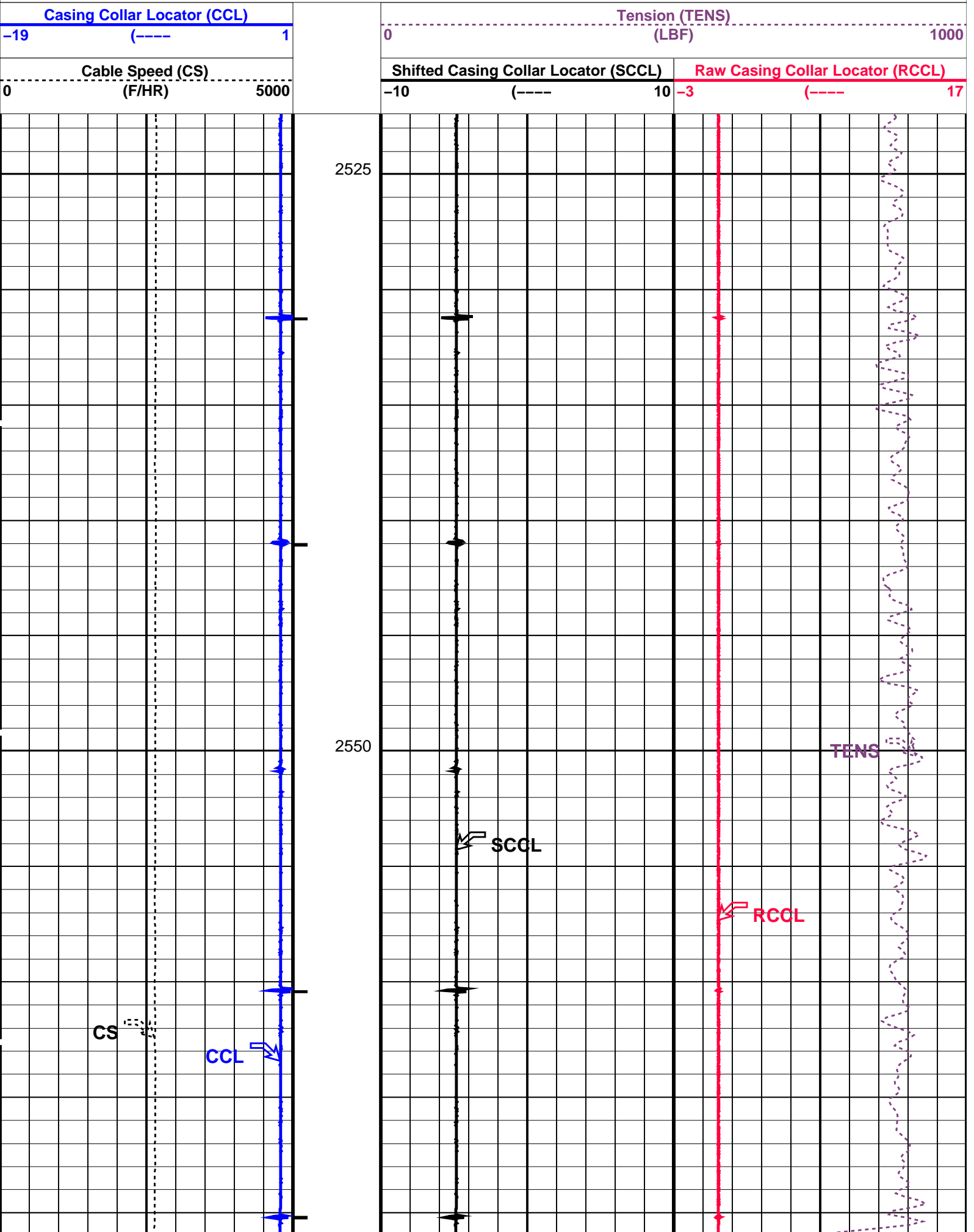
MAXIS Field Log

Output DLIS Files						
DEFAULT	PERFO_062LUP	FN:61	PRODUCER	22-Jun-2007 12:46	2572.1 M	2522.4 M
OP System Version: 14C0-302						
MCM						
SHM_GUN	14C0-302	CCL-L		14C0-302		

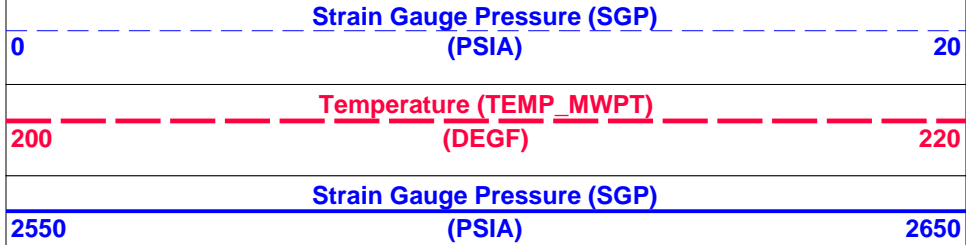
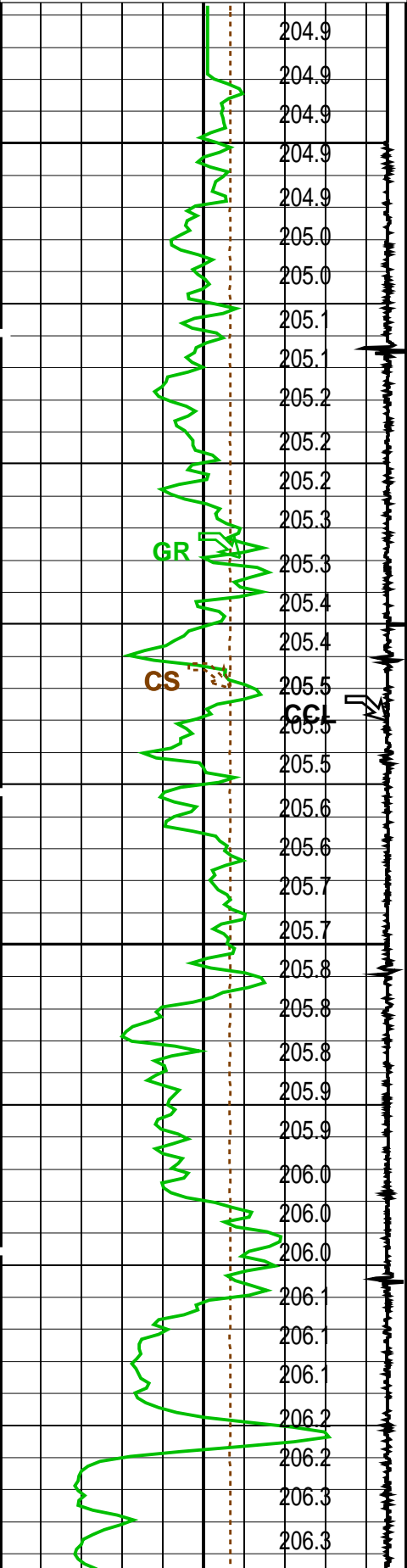
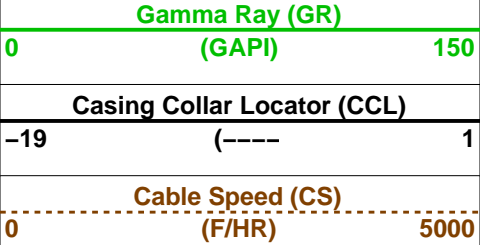
PIP SUMMARY

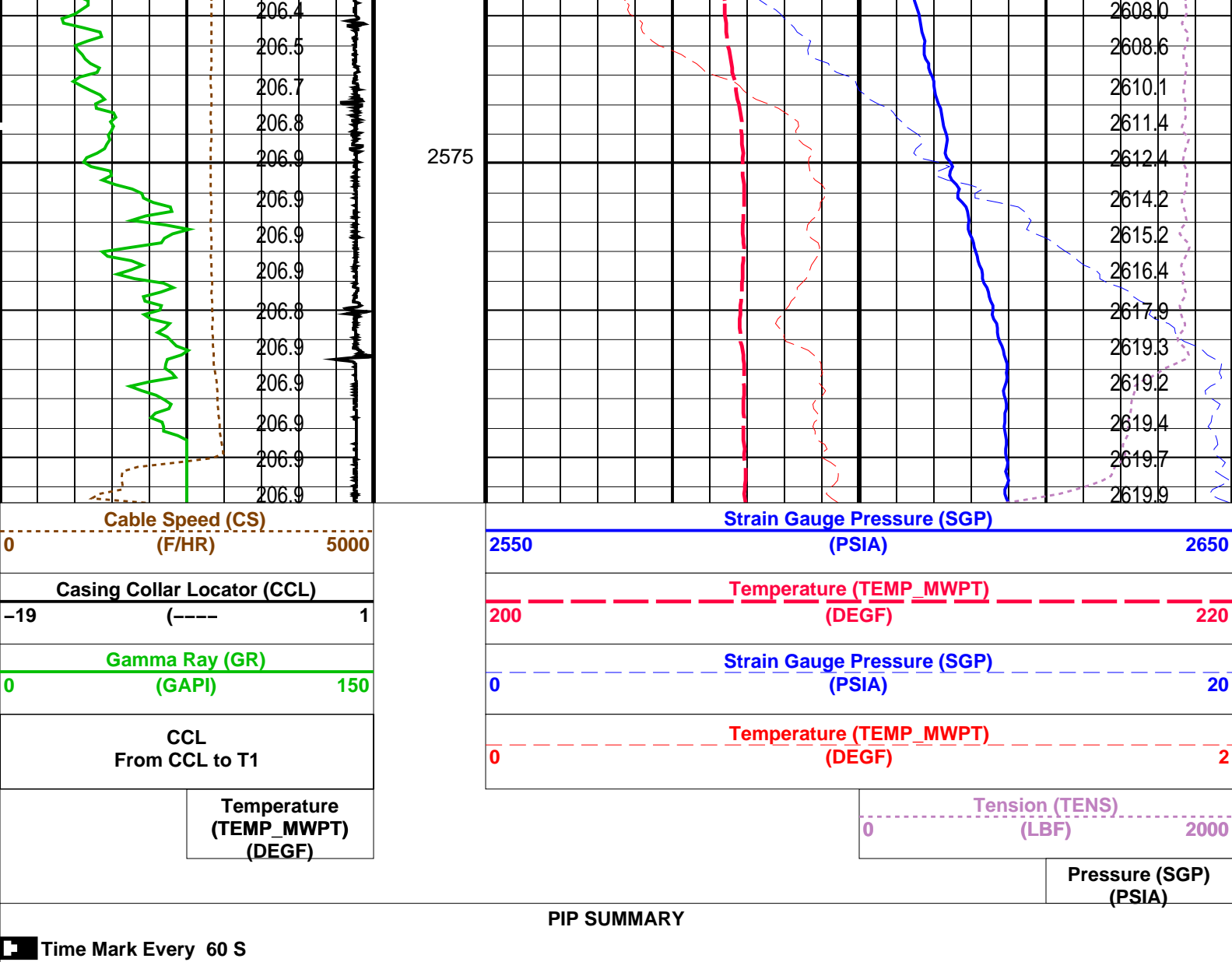
Time Mark Every 60 S

Casing Collars



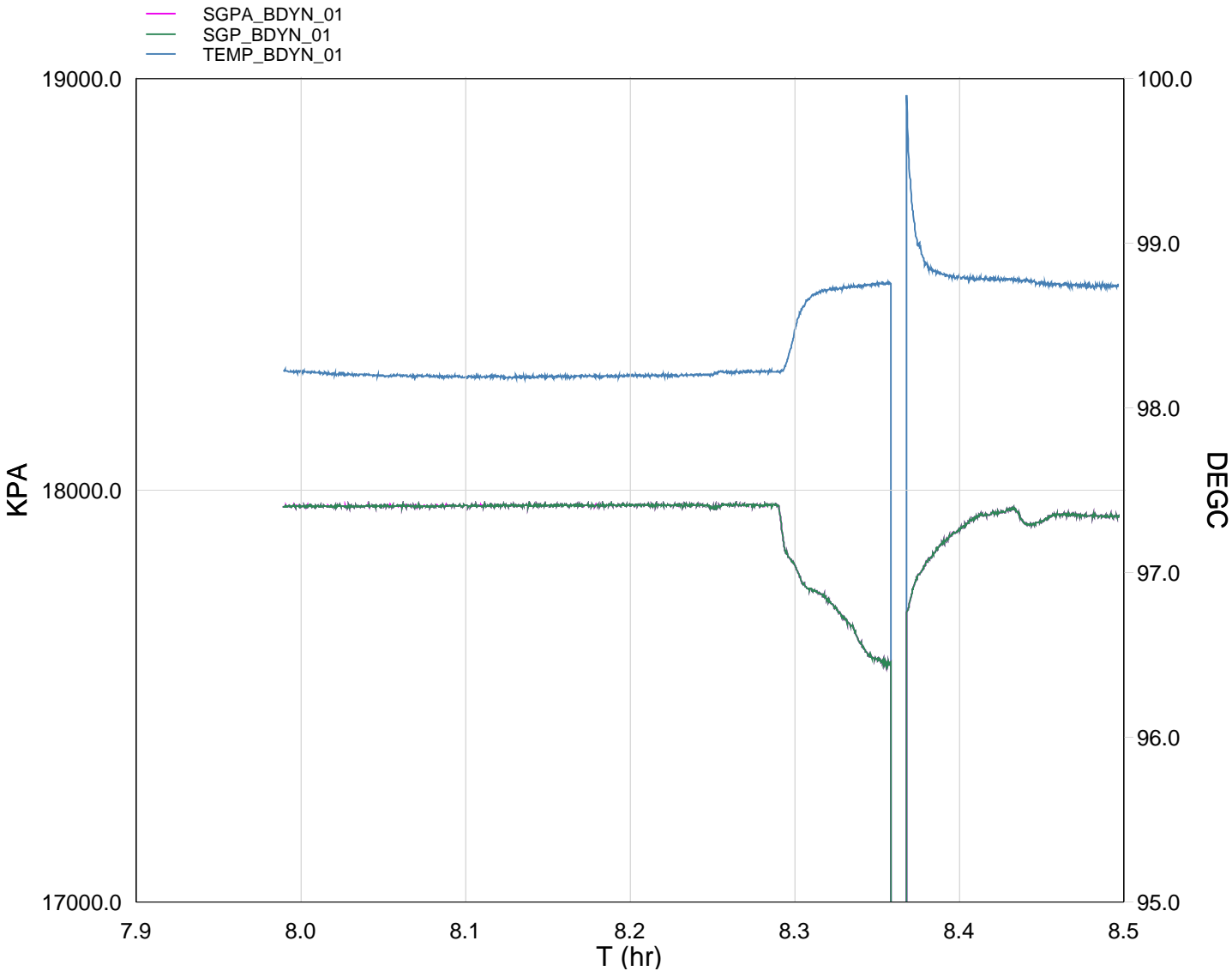
[illegible]



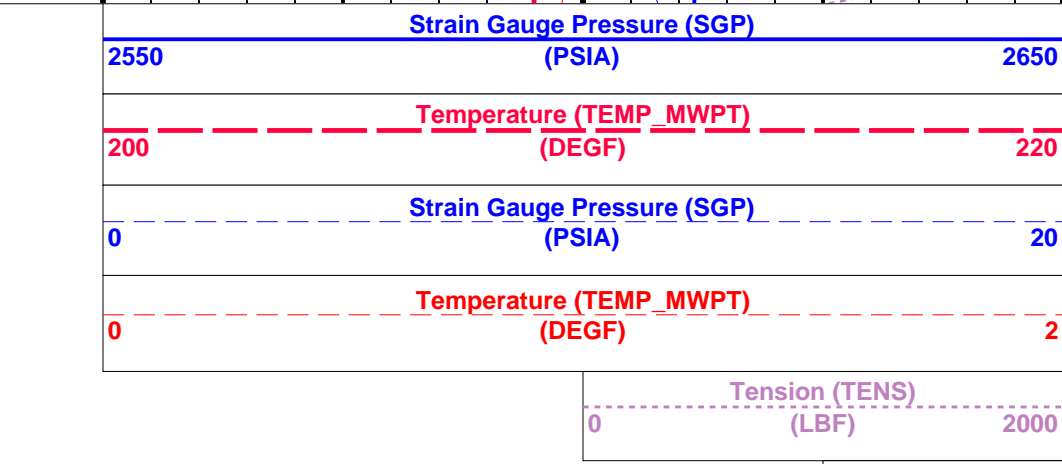
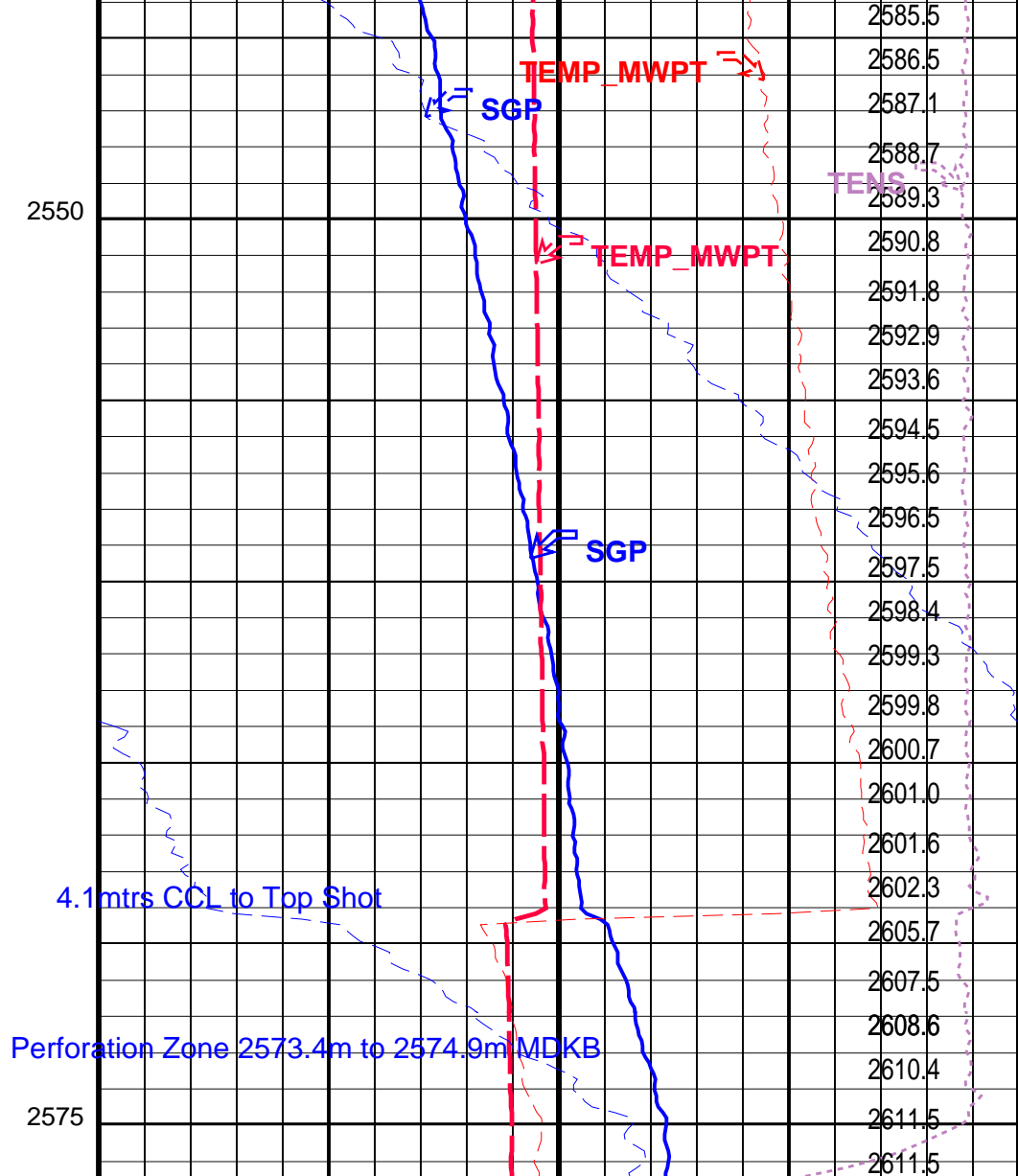
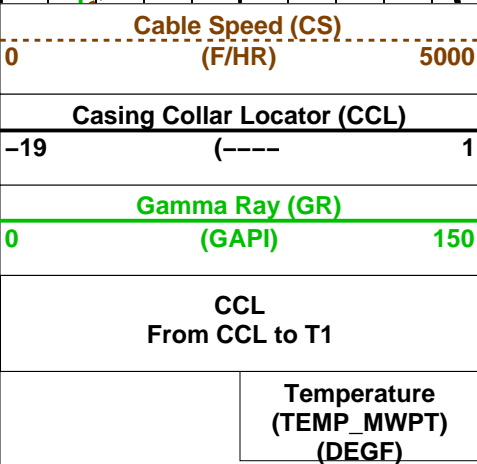
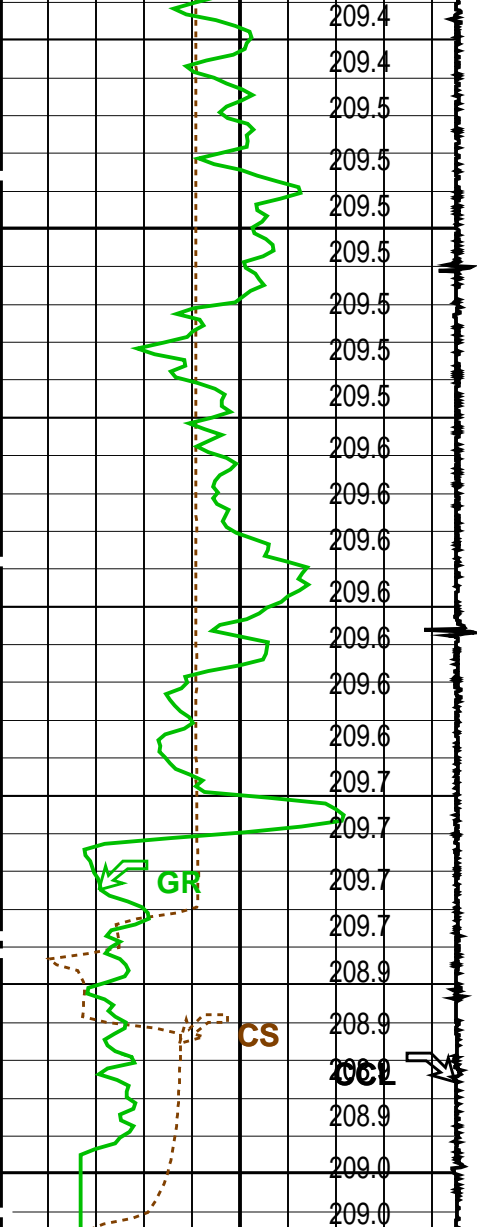


Parameters						
DLIS Name		Description			Value	
MWPT-CA: MEASUREMENT WHILE PERFORATING TOOL						
DEVI_FL_CORR		Deviation Angle for Flow Line Correction			0	DEG
FLD		Flow Line Density			1	G/C3
MWPT_NULL_SOURCE		MWPT NULL Temperature Source			TEMS	
MWPT_NULL_TEMP		MWPT NULL Temperature			0.0	DEGC
System and Miscellaneous						
DO		Depth Offset for Playback			3.5	M
PP		Playback Processing			NORMAL	
Format: MWP		Vertical Scale: 1:200			Graphics File Created: 20-Jun-2007 10:23	
OP System Version: 14C0-302						
MCM						
MWP_GUN		14C0-302		MWPT-CA		14C0-302
MWGT-AA		14C0-302				
Input DLIS Files						
DEFAULT	PERFO_031LUP	FN:30	PRODUCER	20-Jun-2007 10:18	2583.0 M	2519.0 M
Output DLIS Files						
DEFAULT	PERFO_032PUP	FN:31	PRODUCER	20-Jun-2007 10:23		

MAXIS Field Log



TIME	DEGF	PSIA
4020.0	209.72	2601.283
3960.0	209.74	2601.578
3900.0	209.76	2601.739
3840.0	209.80	2599.236
3780.0	209.80	2602.464
3720.0	209.81	2599.811
3660.0	209.87	2591.894
3600.0	210.42	2577.952
3540.0	209.76	2549.931
3480.0	209.73	2557.253



PIP SUMMARY

Time Mark Every 60 S

Parameters

DLIS Name

Description

Value

MWPT-CA: MEASUREMENT WHILE PERFORATING TOOL
DEVI_FL_CORR Deviation Angle for Flow Line Correction
FLD Flow Line Density
MWPT_NULL_SOURCE MWPT NULL Temperature Source
MWPT_NULL_TEMP MWPT NULL Temperature

0 DEG
1 G/C3
TEMS
0.0 DEGC

OP System Version: 14C0-302

MCM

MWP_GUN	14C0-302
MWGT-AA	14C0-302

MWPT-CA **14C0-302**

Output DLIS Files

DEFAULT	PERFO_027LUP	FN:26	PRODUCER	20-Jun-2007 07:57
---------	--------------	-------	----------	-------------------



Correlation Pass

MAXIS Field Log

Company: Esso Australia Pty Ltd.

Well: A-13a

Output DLIS Files

DEFAULT	PERFO_026LUP	FN:25	PRODUCER	20-Jun-2007 07:48	2578.2 M	2531.8 M
---------	--------------	-------	----------	-------------------	----------	----------

OP System Version: 14C0-302

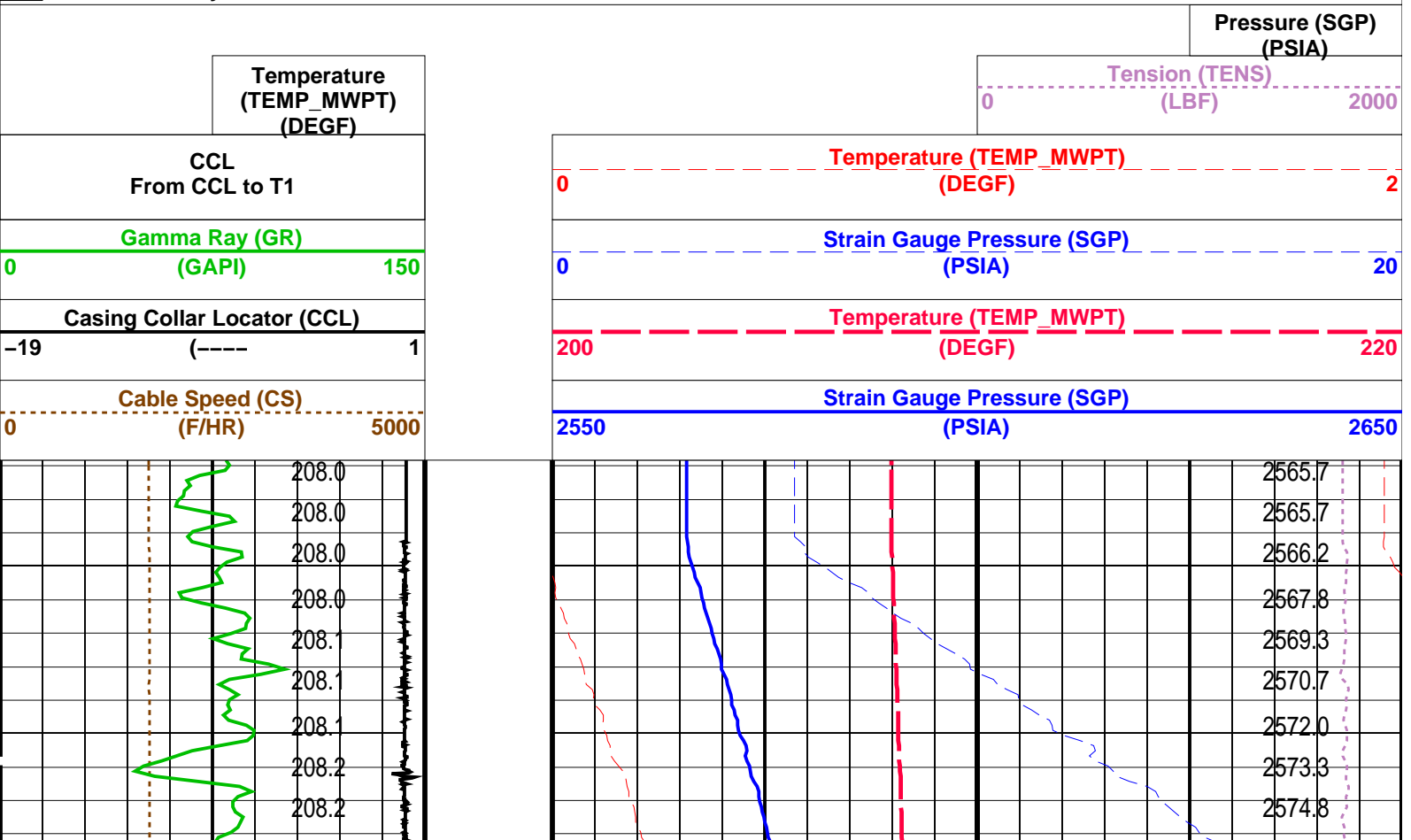
MCM

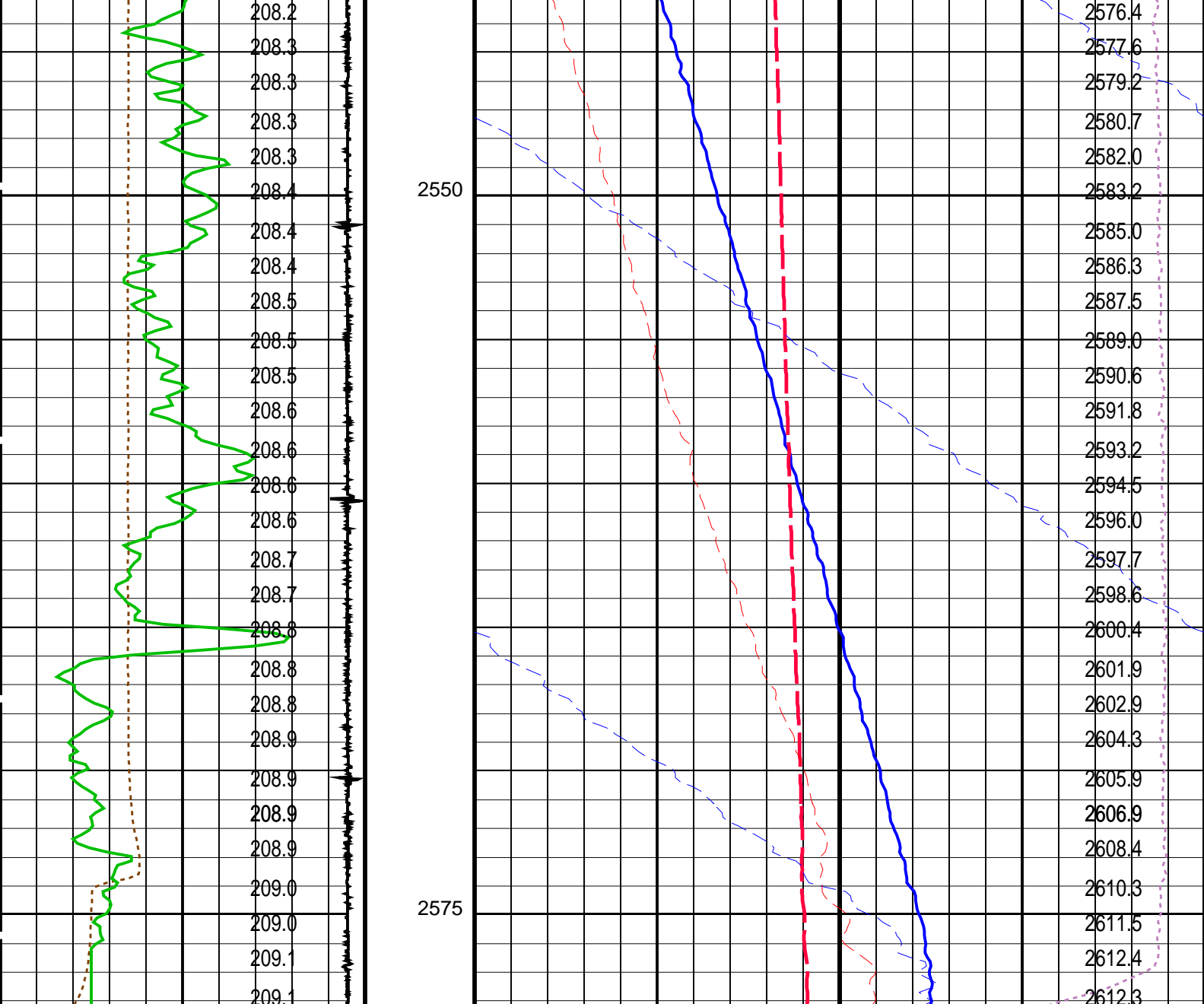
MWP_GUN	14C0-302
MWGT-AA	14C0-302

MWPT-CA 14C0-302

PIP SUMMARY

Time Mark Every 60 S





Cable Speed (CS) (F/HR)		0	5000
Casing Collar Locator (CCL) (----		-19	1
Gamma Ray (GR) (GAPI)		0	150
CCL From CCL to T1			
Temperature (TEMP_MWPT) (DEGF)			
		Strain Gauge Pressure (SGP) (PSIA)	
		Temperature (TEMP_MWPT) (DEGF)	
		Strain Gauge Pressure (SGP) (PSIA)	
		Temperature (TEMP_MWPT) (DEGF)	
		Tension (TENS) (LBF)	
		Pressure (SGP) (PSIA)	

Time Mark Every 60 S

PIP SUMMARY

Parameters		
DLIS Name	Description	Value
MWPT-CA: MEASUREMENT WHILE PERFORATING TOOL		
DEVI_FL_CORR	Deviation Angle for Flow Line Correction	0 DEG

FLD	Flow Line Density	1	G/C3
MWPT_NULL_SOURCE	MWPT NULL Temperature Source	TEMS	
MWPT_NULL_TEMP	MWPT NULL Temperature	0.0	DEGC
Format: MWP	Vertical Scale: 1:200	Graphics File Created: 20-Jun-2007 07:48	
OP System Version: 14C0-302			
MCM			
MWP_GUN	14C0-302	MWPT-CA	14C0-302
MWGT-AA	14C0-302		
Output DLIS Files			
DEFAULT	PERFO_026LUP	FN:25	PRODUCER 20-Jun-2007 07:48
Company: Esso Australia Pty Ltd.			
			Schlumberger
Well:	A-13a		
Field:	Bream A		
Rig :	Prod4 / Crane		
Country:	Australia		
2 1/8" Powerjet Perforation			
4 1/2"HPI Plug			
Setting Record			