

																Rig:	Bred4 / Crane	
--	--	--	--	--	--	--	--	--	--	--	--	--	--	--	--	------	---------------	--

Company: Esso Australia Pty Ltd.

Well: F-2a

Field: Cobia

Rig: Prod4 / Crane

Country: Australia

Field: Cobia
Location: Gippsland
Well: F-2a
Company: Esso Australia Pty Ltd.

PSP
SBHP - GR
Survey

LOCATION	
Gippsland	Elev.: K.B. 39 m
Basin	G.L. -79 m
Bass Strait	D.F. 39 m
Permanent Datum:	M.S.L.
Log Measured From:	D.F.
Drilling Measured From:	D.F.

State: Victoria	Max. Well Deviation 52 deg	Longitude 148°18'32.553"E	Latitude 038°26'57.454"S
-----------------	----------------------------	---------------------------	--------------------------

Logging Date

Run Number

Depth Driller

Schlumberger Depth

Bottom Log Interval

Top Log Interval

Casing Fluid Type

Salinity

Density

Fluid Level

BIT/CASING/TUBING STRING

Bit Size

From

To

Casing/Tubing Size

Weight

Grade

From

To

Maximum Recorded Temperatures

Logger On Bottom

Unit Number

Recorded By

Witnessed By

G Rimmer.

PVT DATA

Run 1

Oil Density

Water Salinity

Gas Gravity

Bo

Bw

1/Bg

Bubble Point Pressure

Bubble Point Temperature

Solution GOR

Maximum Deviation

CEMENTING DATA

Primary/Squeeze

Casing String No

Lead Cement Type

Volume

Density

Water Loss

Additives

Tail Cement Type

Volume

Density

Water Loss

Additives

Expected Cement Top

Logging Date

Run Number

Depth Driller

Schlumberger Depth

Bottom Log Interval

Top Log Interval

Casing Fluid Type

Salinity

Density

Fluid Level

BIT/CASING/TUBING STRING

Bit Size

From

To

Casing/Tubing Size

Weight

Grade

From

To

Maximum Recorded Temperatures

Logger On Bottom

Unit Number

Recorded By

Witnessed By

G Rimmer.

DEPTH SUMMARY LISTING

Date Created: 5-MAY-2007 7:45:09

Depth System Equipment

Depth Measuring Device		Tension Device		Logging Cable	
Type:	IDW-BE	Type:	PSDS/OSDS	Type:	2-32ZT
Serial Number:	6373	Serial Number:	325357	Serial Number:	24425
Calibration Date:	05-Jul-2006	Calibration Date:	26-Apr-2007	Length:	6590.08 M
Calibrator Serial Number:	9	Calibrator Serial Number:	1174	Conveyance Method: Wireline Rig Type: Rigless	
Calibration Cable Type:	2-32ZT	Calibration Gain:	0.91		
Wheel Correction 1:	-2	Calibration Offset:	217.00		
Wheel Correction 2:	-4				

Depth Control Parameters

Log Sequence:	Subsequent Log In the Well
Reference Log Name:	Solar Composite Correlation
Reference Log Run Number:	1
Reference Log Date:	

Depth Control Remarks

1. IDW used as primary depth control.
2. Z chart as secondary back-up.

DISCLAIMER

THE USE OF AND RELIANCE UPON THIS RECORDED-DATA BY THE HEREIN NAMED COMPANY (AND ANY OF ITS AFFILIATES, PARTNERS, REPRESENTATIVES, AGENTS, CONSULTANTS AND EMPLOYEES) IS SUBJECT TO THE TERMS AND CONDITIONS AGREED UPON BETWEEN SCHLUMBERGER AND THE COMPANY, INCLUDING: (a) RESTRICTIONS ON USE OF THE RECORDED-DATA; (b) DISCLAIMERS AND WAIVERS OF WARRANTIES AND REPRESENTATIONS REGARDING COMPANY'S USE OF AND RELIANCE UPON THE RECORDED-DATA; AND (c) CUSTOMER'S FULL AND SOLE RESPONSIBILITY FOR ANY INFERENCE DRAWN OR DECISION MADE IN CONNECTION WITH THE USE OF THIS RECORDED-DATA.

OTHER SERVICES1
OS1: None

REMARKS: RUN NUMBER 1
Log Correlated to Solar composite log provided by client .
Objective: Conduct Gamma Ray survey with well shut in
from HUD to 3200m MDKB .Also SBHP stations from 3326m to 0 m MDKB.
Maximum Well Deviation : 52 deg @1767m MDKB.
SBHP = 3209 psia @ 3326m MDKB.
SBHT = 224 degf @ 3326m MDKB.

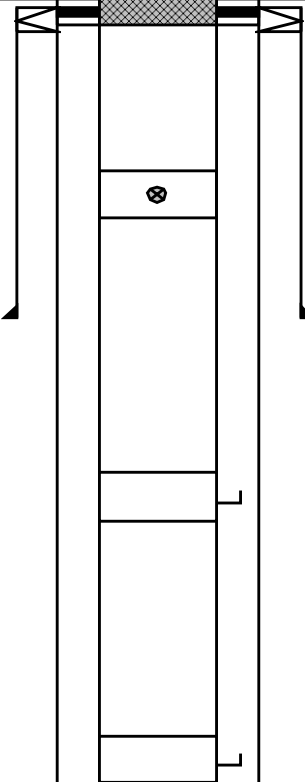
Crew : Jake Annear & John Light

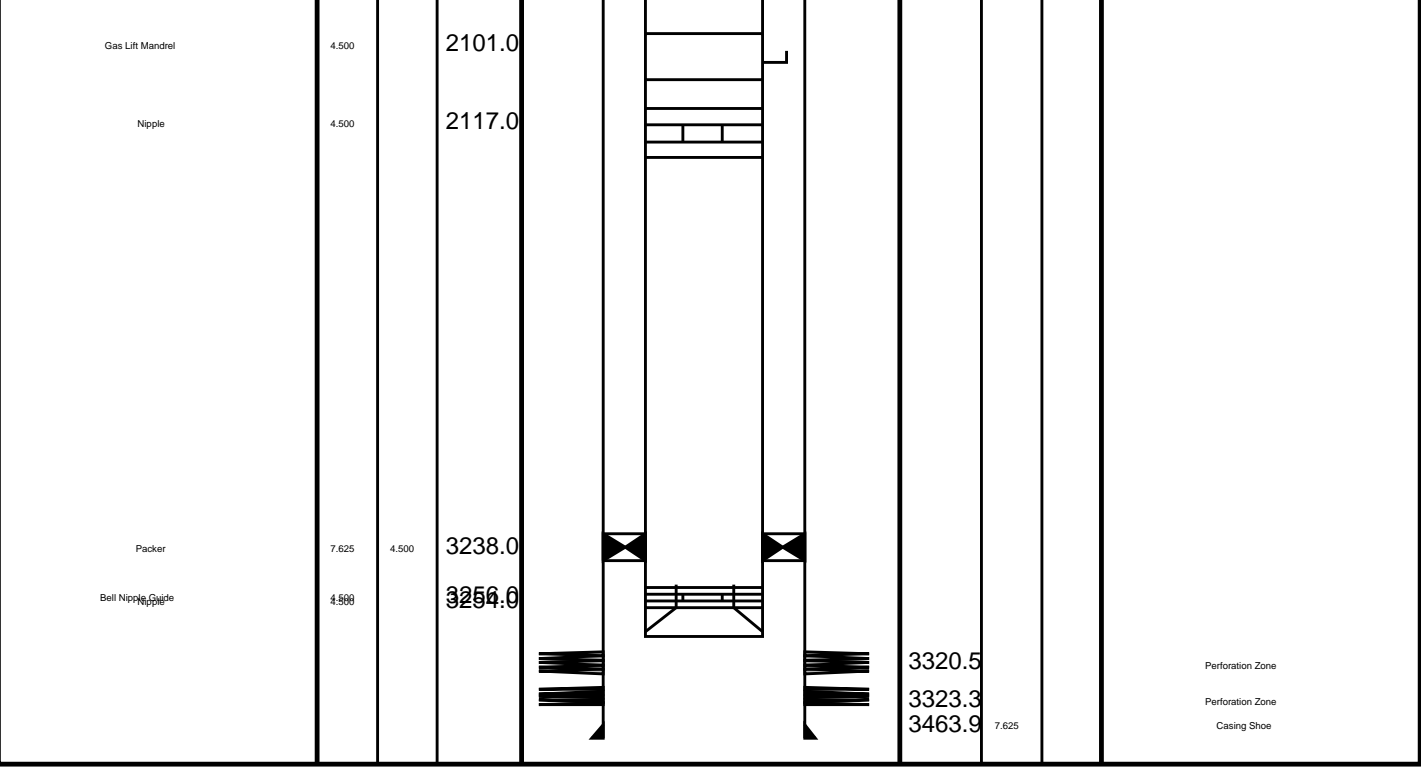
RUN 1		
SERVICE ORDER #:	AUSL07328218	
PROGRAM VERSION:	14C0-302	
FLUID LEVEL:	996 m	
LOGGED INTERVAL	START	STOP

EQUIPMENT DESCRIPTION

RUN 1	
SURFACE EQUIPMENT	
WITM-A 827 PSC_16MHZ 827	
DOWNHOLE EQUIPMENT	
AH-SWBS-B 761 AH-SWBS-B 761	5.62
AH-SWBS-B 762 AH-SWBS-B 762	4.93
AH-SWBS-B 76 AH-SWBS-B 763	4.25
AH-SWBS-B 731 AH-SWBS-B 731	3.56
MH-SWHS-A 726 MH-SWHS-A 726	2.88
DCPT B 827	2.55

MAXIMUM STRING DIAMETER 1.69 IN
MEASUREMENTS RELATIVE TO TOOL ZERO
ALL LENGTHS IN METERS

Production String		(in)		(m)	Well Schematic		(m)	(n)	Casing String	
		OD	ID	MD			MD	OD	ID	
Tubing Hanger Tubing	7.625 4.500	4.500	18.9		18.8 18.8	10.625 10.750	7.625	Casing String Liner Hanger		
	4.500	450.7	661.9		10.750					
	4.500	1080.0								
	4.500	1621.0								
Shut-in Valve									Casing Shoe	
Gas Lift Mandrel										
Gas Lift Mandrel										

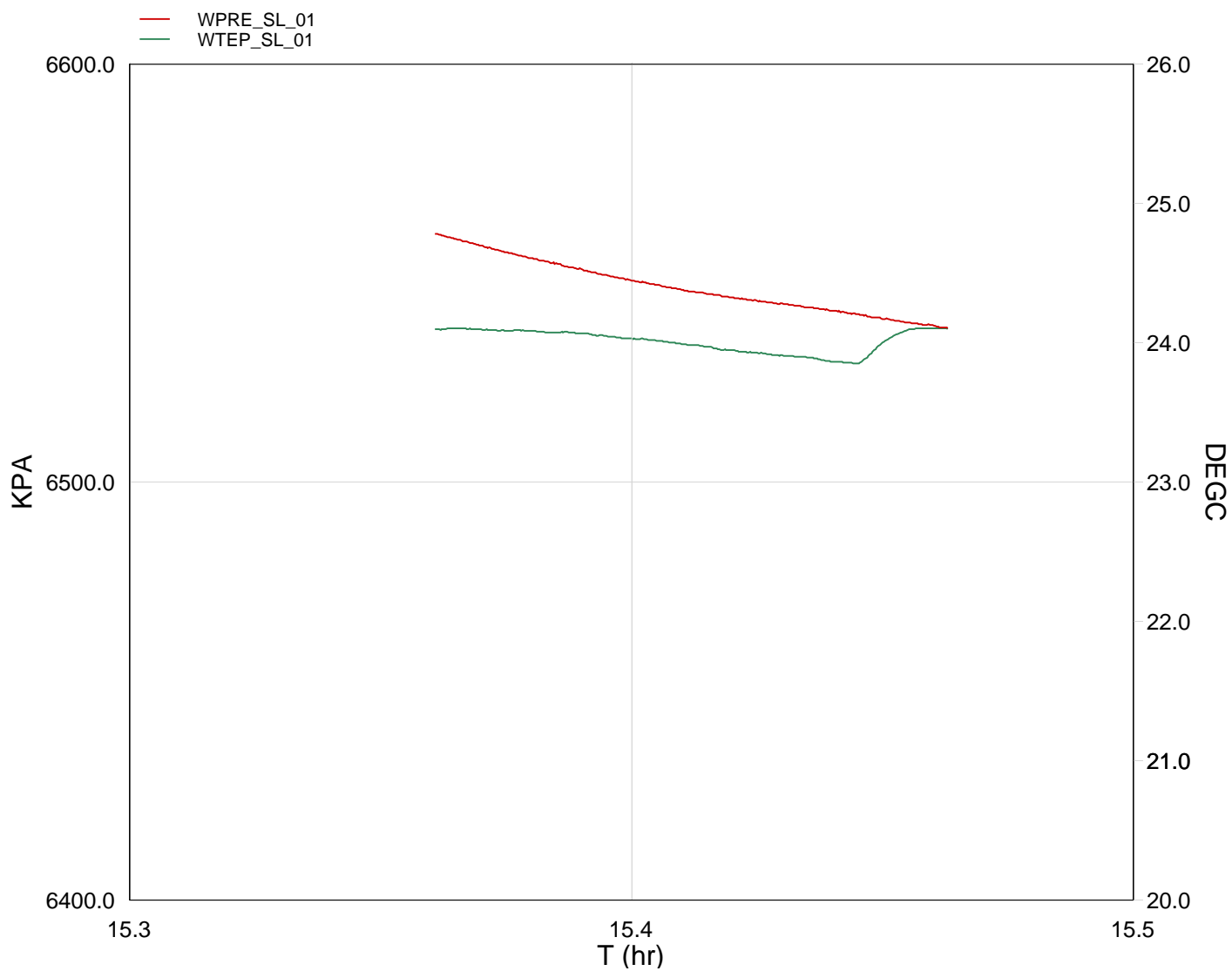


Schlumberger Job Event Summary

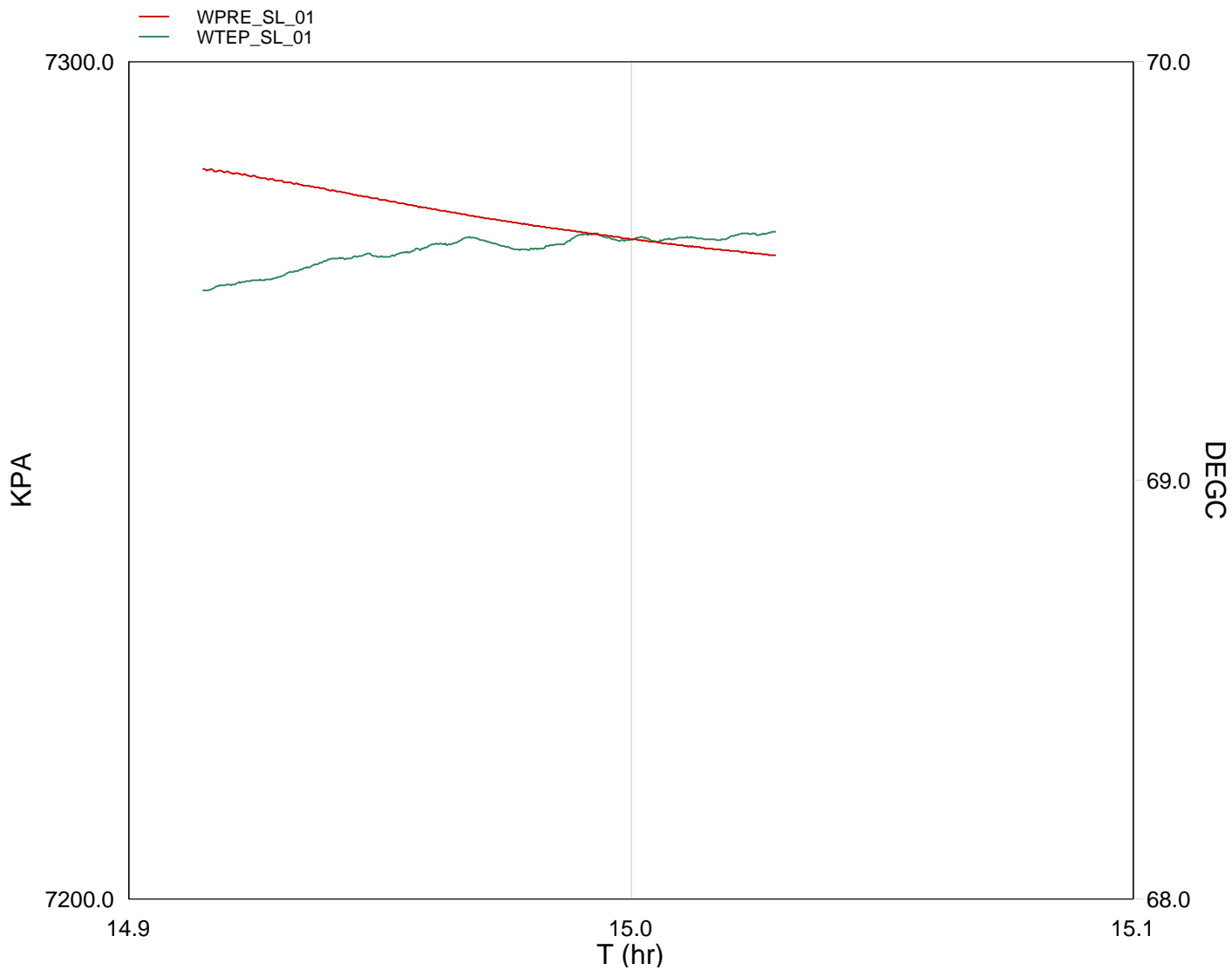
	Time	Elapsed Time	Depth (M)	File
Simulated Log	12-May-2007 8:26	000:07		PSP_003LUP
Simulated Log	12-May-2007 9:54	000:36		PSP_004LUP
Log Pass (down)	12-May-2007 10:30	001:18	3.8 - 3440.1	PSP_005LDP
Log Pass (up)	12-May-2007 11:48	000:33	3440.0 - 3193.2	PSP_006LUP
Station Log	12-May-2007 12:27	000:12	3326.4 - 1.8	PSP_007LTP
Station Log	12-May-2007 12:45	000:12	3324.5 - 1.7	PSP_008LTP
Station Log	12-May-2007 13:03	000:11	3322.9 - 1.7	PSP_009LTP
Station Log	12-May-2007 13:16	000:12	3321.7 - 1.8	PSP_010LTP
Station Log	12-May-2007 13:31	000:11	3319.9 - 1.6	PSP_011LTP
Station Log	12-May-2007 13:46	000:07	3290.4 - 1.0	PSP_012LTP
Station Log	12-May-2007 13:59	000:11	3000.4 - 1.0	PSP_013LTP
Station Log	12-May-2007 15:21	000:06	12.9 - 0.9	PSP_022LTP



Static Station @
0m MDKB 0m TVD



TIME	DEGF	PSIA
90.0	74.7072	950.5223
120.0	75.3856	951.1739
150.0	75.3586	950.7938
180.0	75.3410	950.4397
210.0	75.3268	950.1163
240.0	75.2616	949.7983
270.0	75.2134	949.5184
300.0	75.1527	949.2733
330.0	75.0796	949.0743
360.0	75.0268	948.8964
390.0	74.9573	948.6889
420.0	75.1132	948.4586
450.0	75.3849	948.2450



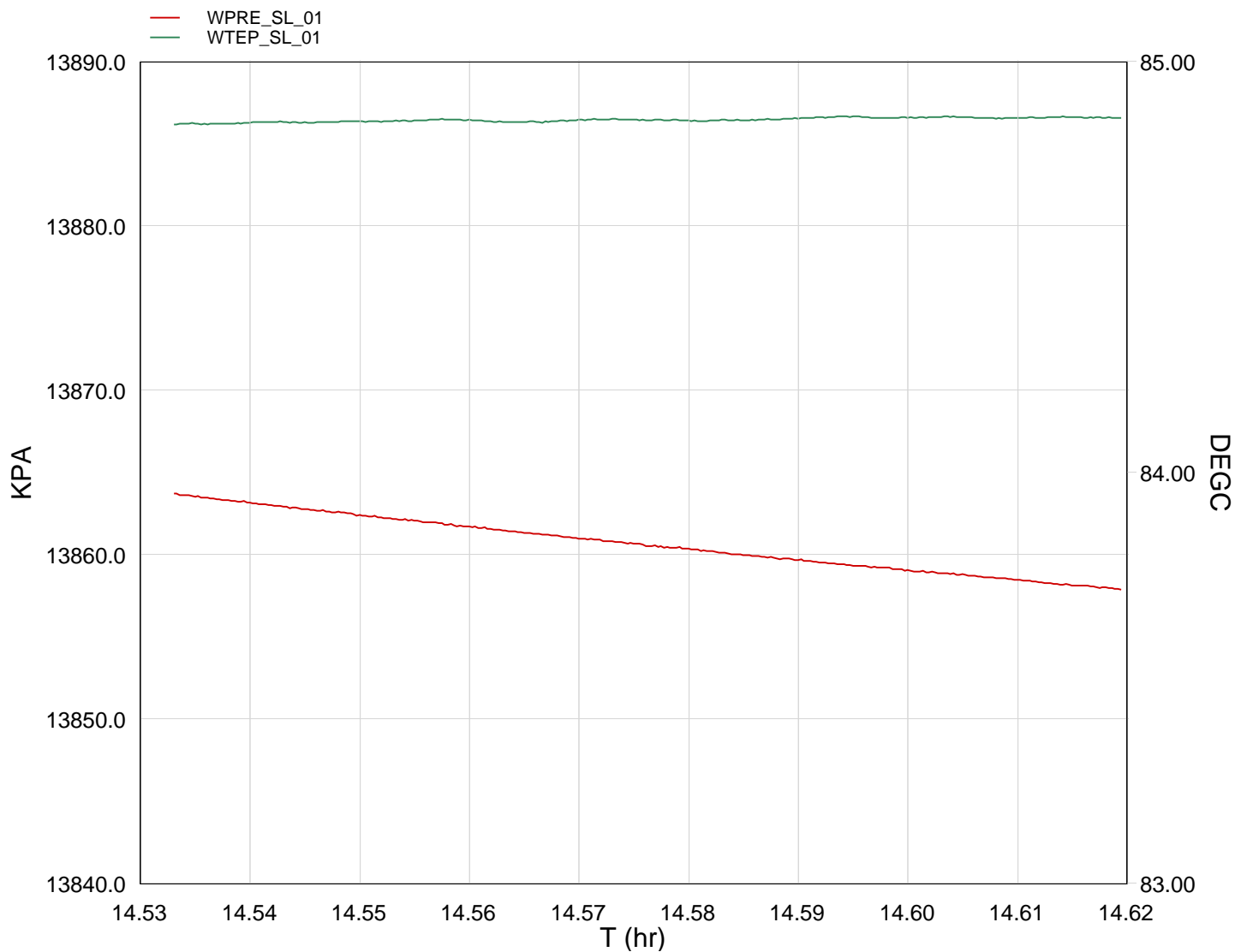
TIME	DEGF	PSIA
1470.0	157.0261	1056.8904
1500.0	157.0613	1056.7914
1530.0	157.1004	1056.6633
1560.0	157.1552	1056.5235
1590.0	157.1627	1056.3861
1620.0	157.1974	1056.2504
1650.0	157.2412	1056.1345
1680.0	157.2051	1056.0139
1710.0	157.2079	1055.9020
1740.0	157.2571	1055.8006
1770.0	157.2871	1055.6888

1770.0	157.2354	1055.6986
1800.0	157.2374	1055.6108
1830.0	157.2339	1055.5291
1860.0	157.2556	1055.4545



Static Station @
2000m MDKB 1534.1m TVD

MAXIS Field Log



TIME	DEGF	PSIA
------	------	------

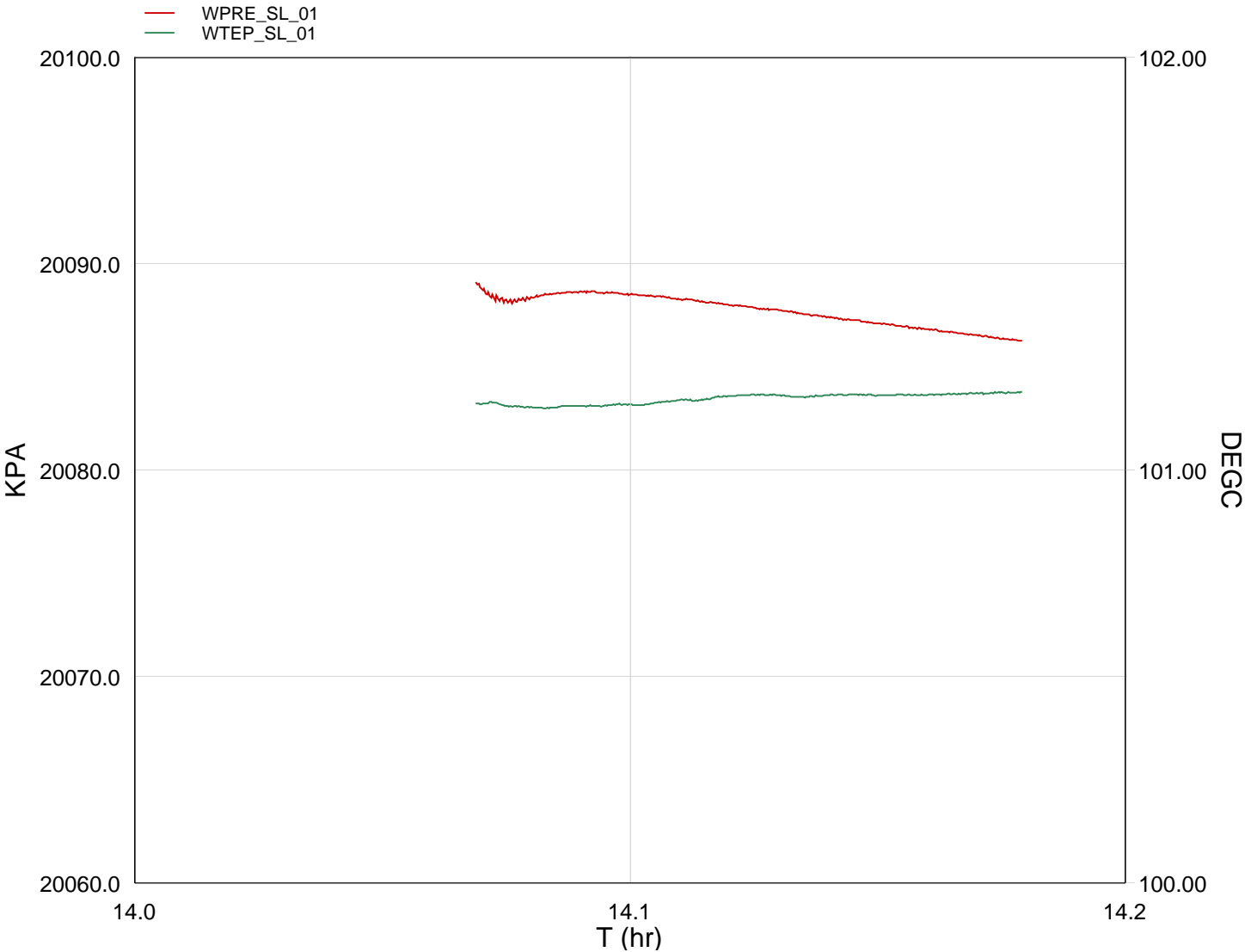
90.0	184.7279	2010.7619
120.0	184.7375	2010.6656
150.0	184.7407	2010.5759

180.0	184.7467	2010.4920
210.0	184.7366	2010.4064
240.0	184.7467	2010.3213
270.0	184.7462	2010.2424
300.0	184.7593	2010.1624
330.0	184.7567	2010.0884
360.0	184.7552	2010.0178
390.0	184.7567	2009.9442



Static Station @
3000m MDKB 2172.1m TVD

MAXIS Field Log

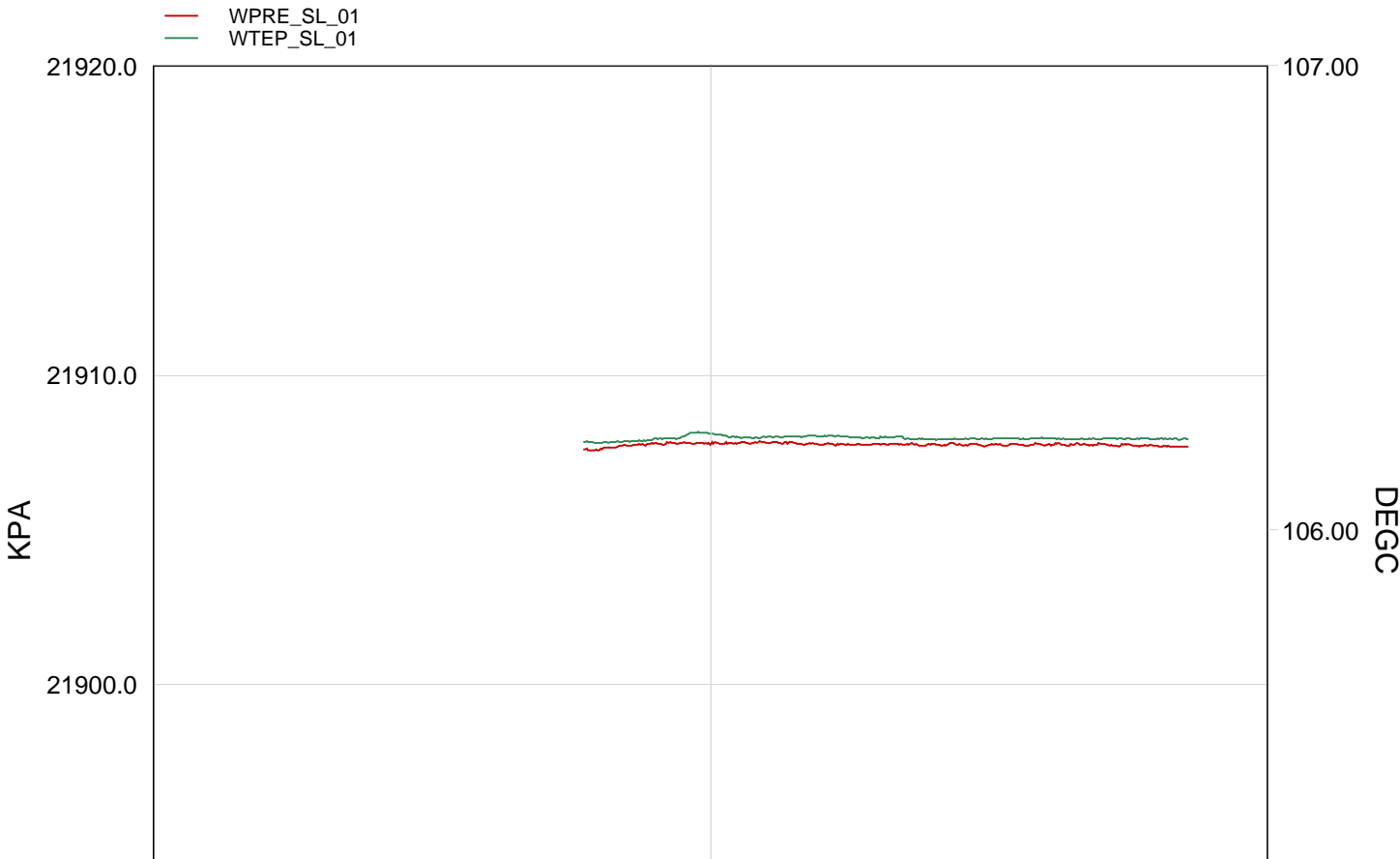


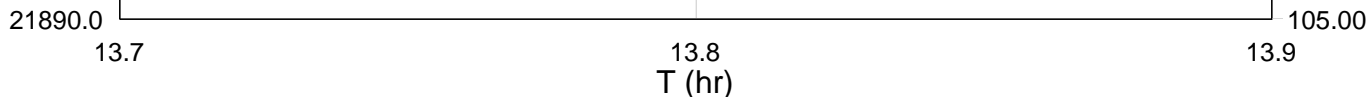
TIME	DEGF	PSIA
15000.0	214.2554	2918.5006
15030.0	214.0867	2913.5643
15060.0	214.0719	2913.5846
15090.0	214.0801	2913.6125
15120.0	214.0879	2913.5938
15150.0	214.0988	2913.5733
15180.0	214.1120	2913.5337
15210.0	214.1283	2913.5044
15240.0	214.1226	2913.4695
15270.0	214.1299	2913.4333
15300.0	214.1276	2913.3937
15330.0	214.1287	2913.3561
15360.0	214.1349	2913.3247
15390.0	214.1376	2913.2878
15420.0	214.1415	2913.2549



Static Station @
3290m MDKB 2360.9m TVD

MAXIS Field Log



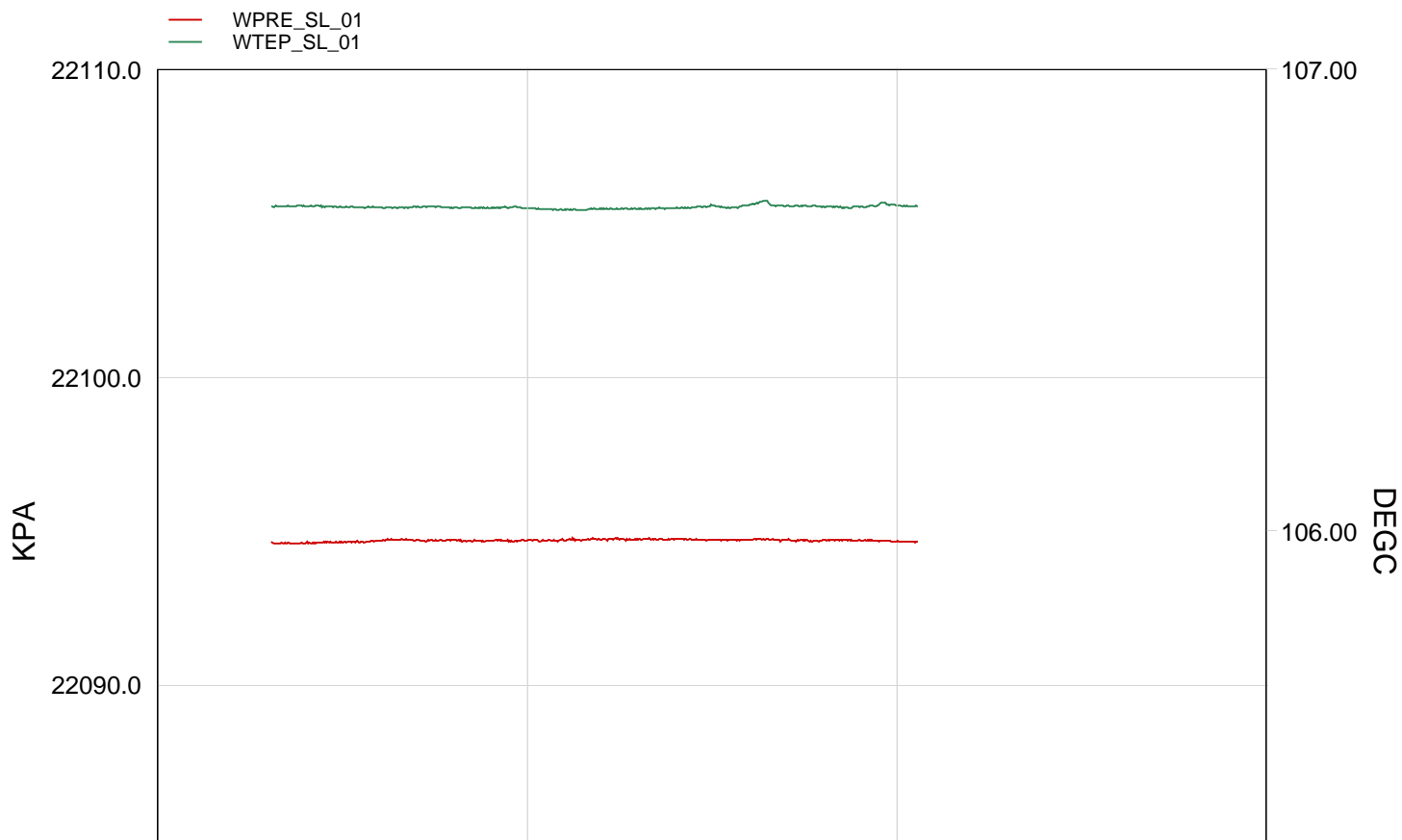


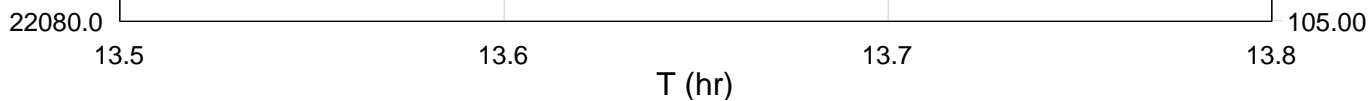
TIME	DEGF	PSIA
13980.0	223.1407	3177.4371
14040.0	223.1789	3177.4583
14100.0	223.1623	3177.4572
14160.0	223.1597	3177.4549
14220.0	223.1554	3177.4473
14280.0	223.1524	3177.4538
14340.0	223.1518	3177.4452

Schlumberger

Static Station @
3319.5m MDKB 2380m TVD

MAXIS Field Log



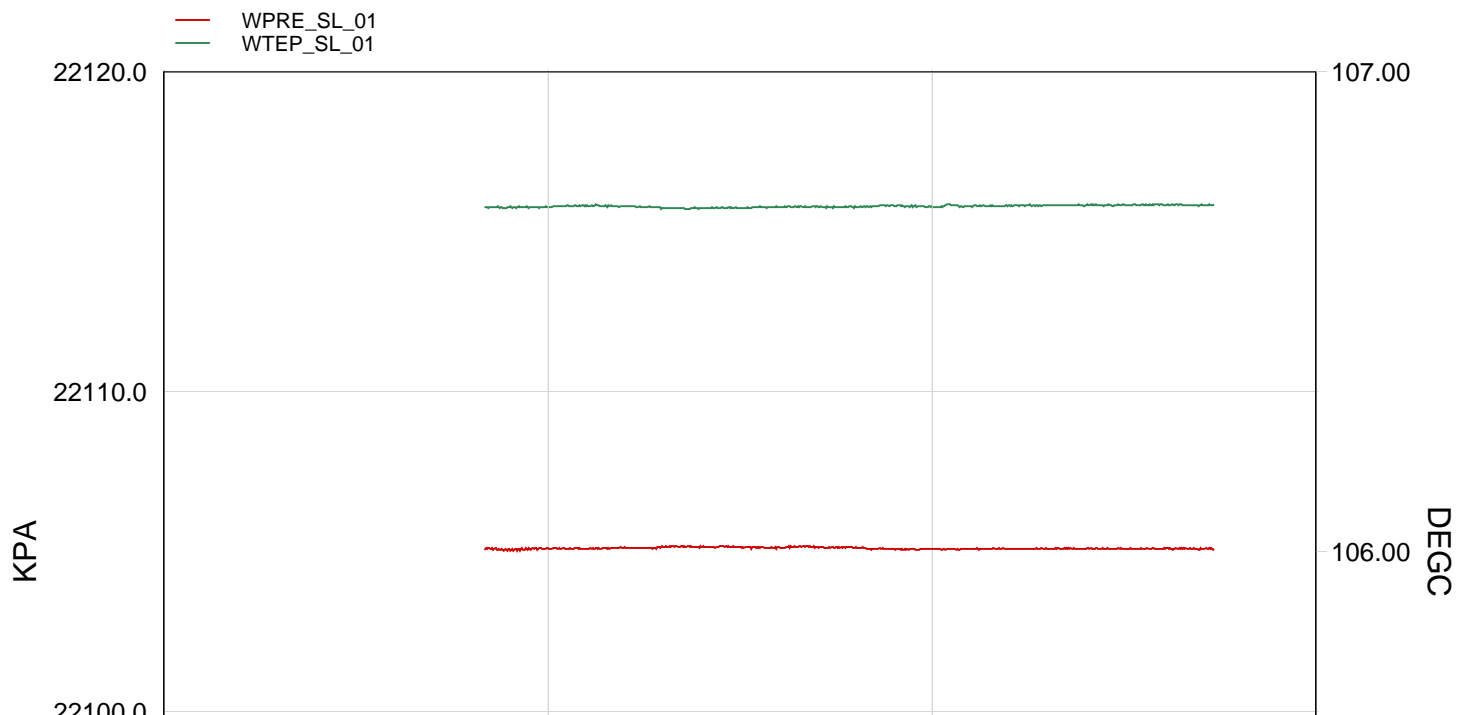


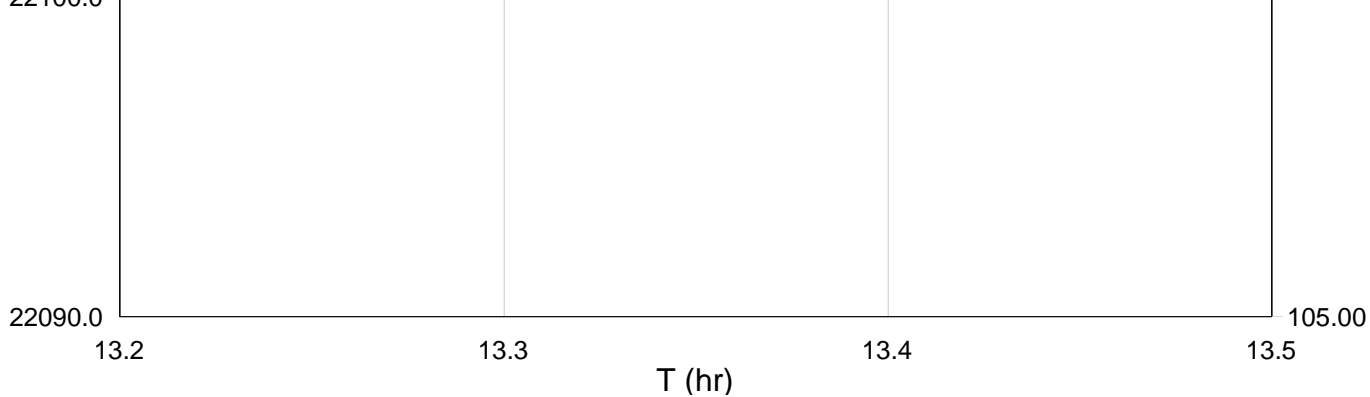
TIME	DEGF	PSIA
13080.0	224.0682	3204.5520
13140.0	224.0653	3204.5563
13200.0	224.0623	3204.5690
13260.0	224.0621	3204.5628
13320.0	224.0591	3204.5669
13380.0	224.0542	3204.5676
13440.0	224.0583	3204.5720
13500.0	224.0666	3204.5667
13560.0	224.0787	3204.5711
13620.0	224.0667	3204.5674
13680.0	224.0731	3204.5605

Schlumberger

Static Station @
3321.3m MDKB 2381.2m TVD

MAXIS Field Log



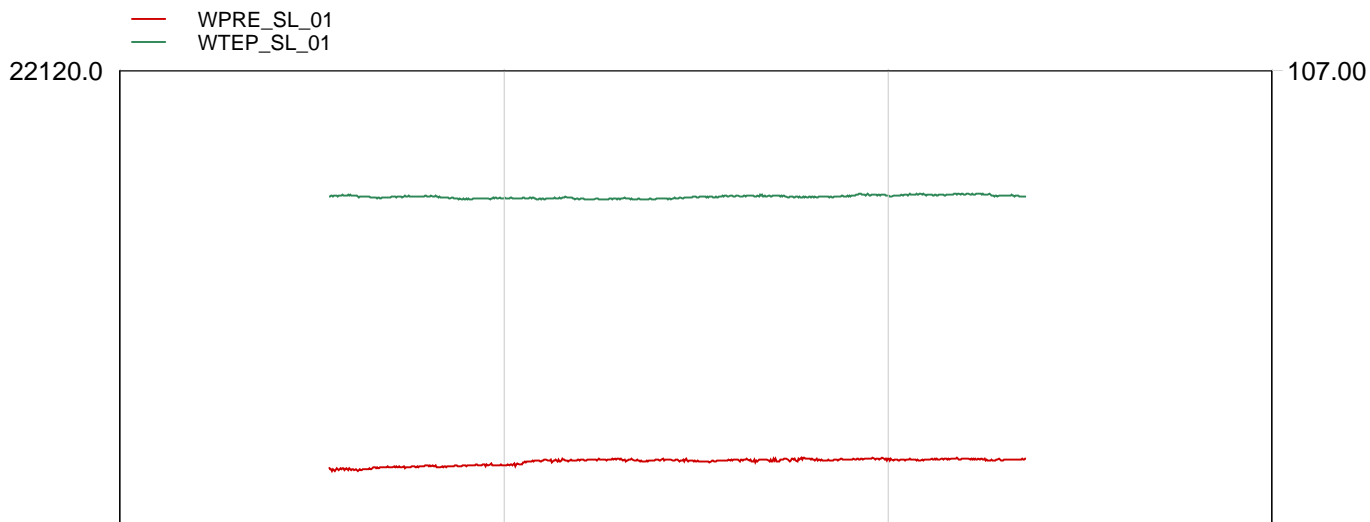


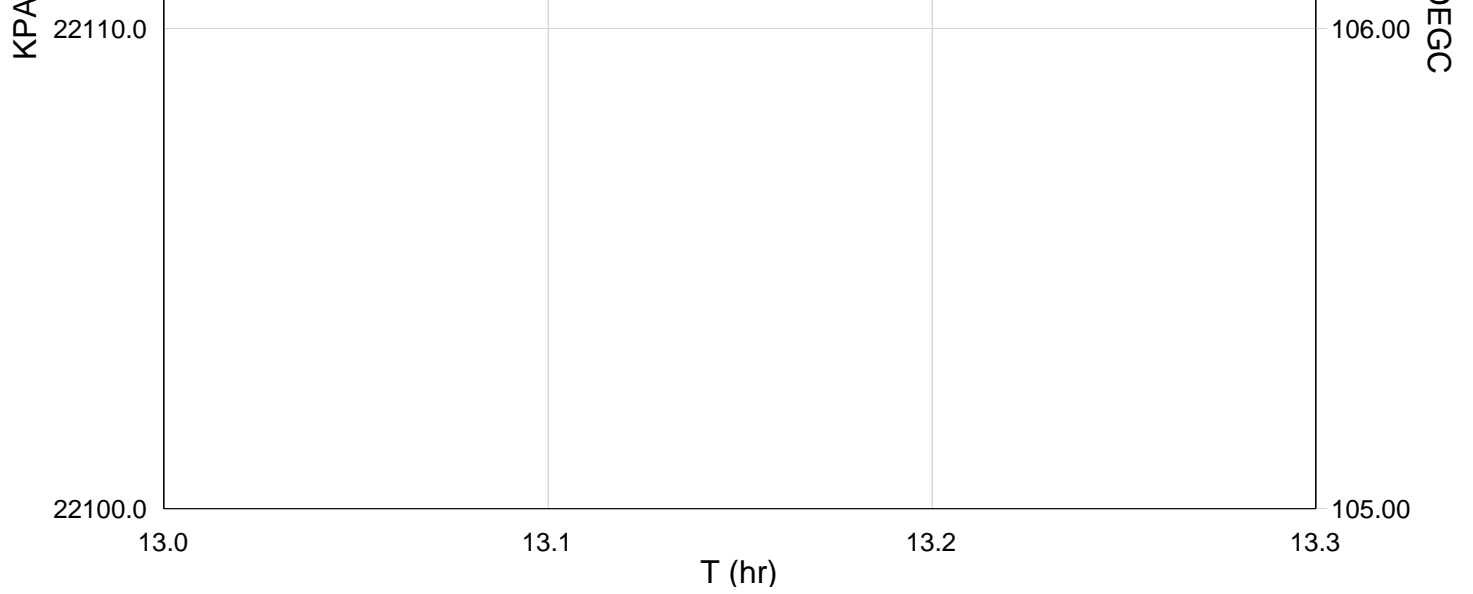
TIME	DEGF	PSIA
12180.0	224.0919	3206.0949
12240.0	224.0914	3206.0706
12300.0	224.0945	3206.0724
12360.0	224.0891	3206.0821
12420.0	224.0906	3206.0805
12480.0	224.0940	3206.0823
12540.0	224.0960	3206.0755
12600.0	224.0933	3206.0701
12660.0	224.0976	3206.0726
12720.0	224.0983	3206.0736
12780.0	224.1010	3206.0727
12840.0	224.0991	3206.0753

Schlumberger

Static Station @
3322.5m MDKB 2382m TVD

MAXIS Field Log



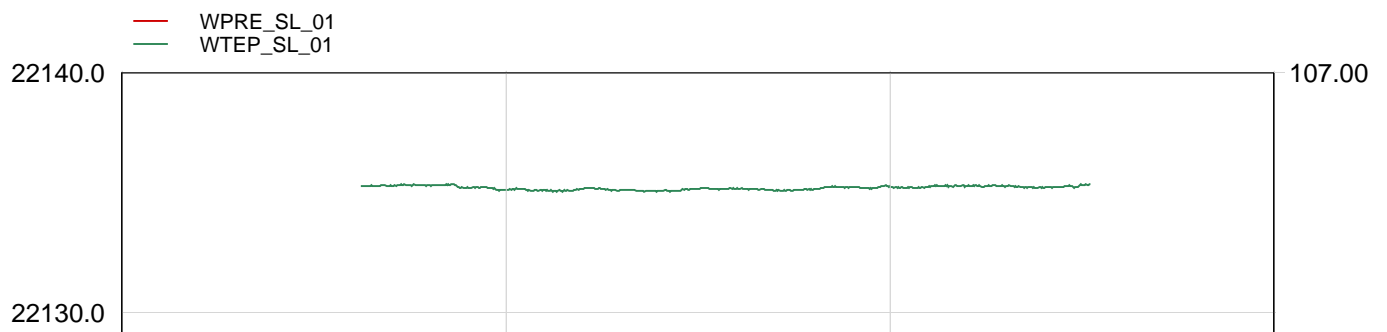


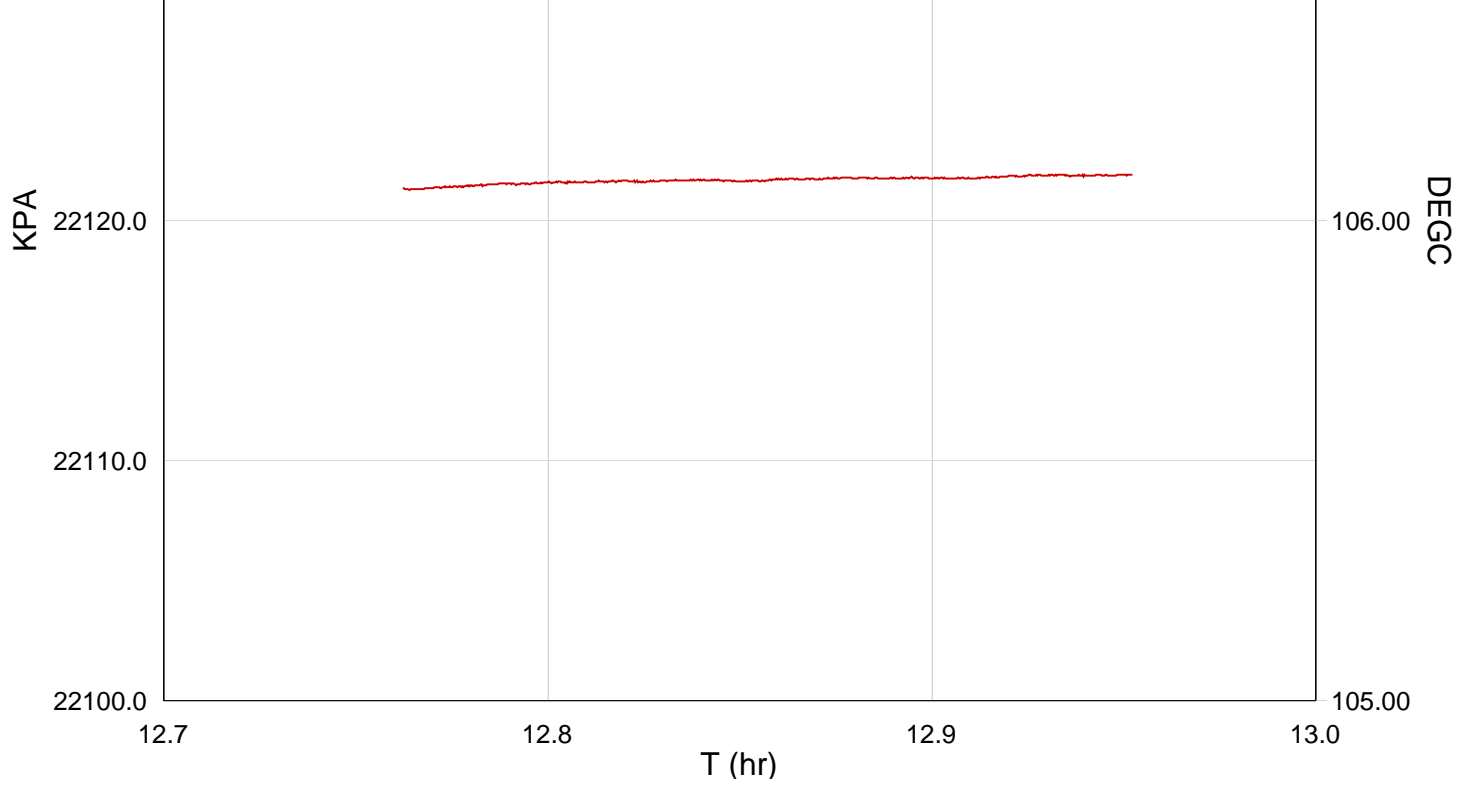
TIME	DEGF	PSIA
11340.0	224.1318	3207.1159
11400.0	224.1260	3207.0298
11460.0	224.1305	3207.0404
11520.0	224.1238	3207.0400
11580.0	224.1252	3207.0587
11640.0	224.1221	3207.0552
11700.0	224.1263	3207.0567
11760.0	224.1292	3207.0522
11820.0	224.1284	3207.0580
11880.0	224.1365	3207.0621
11940.0	224.1366	3207.0596
12000.0	224.1340	3207.0583



Static Station @
3324.1m MDKB 2383m TVD

MAXIS Field Log





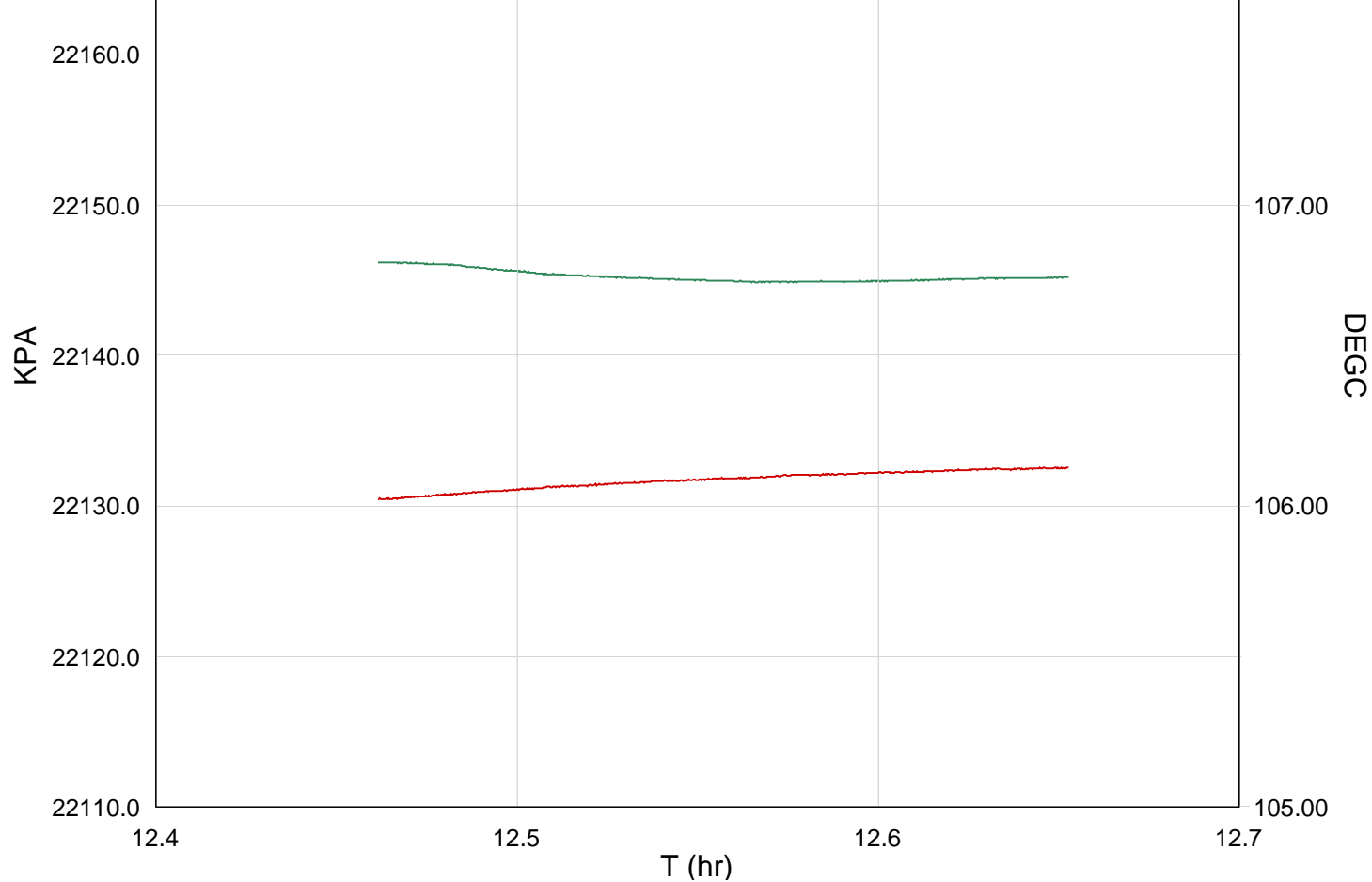
TIME	DEGF	PSIA
10320.0	224.1755	3208.4261
10380.0	224.1792	3208.4498
10440.0	224.1593	3208.4628
10500.0	224.1581	3208.4685
10560.0	224.1605	3208.4767
10620.0	224.1636	3208.4722
10680.0	224.1639	3208.4825
10740.0	224.1678	3208.4951
10800.0	224.1762	3208.4926
10860.0	224.1744	3208.4954
10920.0	224.1748	3208.5099
10980.0	224.1728	3208.5102

Schlumberger

Static Station @
3326m MDKB 2384.2m TVD

MAXIS Field Log





TIME	DEGF	PSIA
9240.0	224.2555	3209.7536
9300.0	224.2429	3209.7947
9360.0	224.2069	3209.8405
9420.0	224.1814	3209.8782
9480.0	224.1661	3209.9077
9540.0	224.1537	3209.9375
9600.0	224.1423	3209.9585
9660.0	224.1428	3209.9820
9720.0	224.1474	3210.0032
9780.0	224.1519	3210.0199
9840.0	224.1633	3210.0431
9900.0	224.1673	3210.0486

Schlumberger

Gamma-Ray Pass
3420m to 3200m MDKB

MAXIS Field Log

Input DLIS Files						
DEFAULT	PSP_006LUP	FN:5	PRODUCER	12-May-2007 11:48	3440.0 M	3193.2 M
Output DLIS Files						
DEFAULT	PSP_015PUP	FN:14	PRODUCER	12-May-2007 14:22	3436.0 M	3189.7 M

Input DLIS Files						
DEFAULT	PSP_006LUP	FN:5	PRODUCER	12-May-2007 11:48	3440.0 M	3193.2 M
Output DLIS Files						
DEFAULT	PSP_015PUP	FN:14	PRODUCER	12-May-2007 14:22	3436.0 M	3189.7 M

<p align="center">OP System Version: 14C0-302</p> <p align="center">MCM</p>	
PSPT-B	14C0-302

<p align="center">OP System Version: 14C0-302</p> <p align="center">MCM</p>	
PSPT-B	14C0-302

PIP SUMMARY

PIP SUMMARY

PIP SUMMARY

Amplified Well Pressure (WPRESIA)

Amplified Well Pressure (WPRESIA)

Amplified Well Pressure (WPRESIA)

Amplified Well Pressure (WPRESIA)

Amplified Well Pressure (WPRESIA)

	Well Pressure (WPRE)	
3100	(PSIA)	3300

	Well Pressure (WPRE)	
3100	(PSIA)	3300

	Well Pressure (WPRE)	
3100	(PSIA)	3300

	Well Pressure (WPRE)	
3100	(PSIA)	3300

	Well Temperature (WTEP) (DEGF)	
0		1

	Well Temperature (WTEP) (DEGF)	
0		1

	Well Temperature (WTEP) (DEGF)	
0		1

	Well Temperature (WTEP) (DEGF)	
0		1

	Well Pressure (WPRE) (PSIA)	
--	-----------------------------------	--

Perfo Zone From PERFO_ CURVE to D3T	Well Temperature (WTEP)	
	222	227

Perfo Zone From PERFO_ CURVE to D3T	Well Temperature (WTEP)	
	222	227

Perfo Zone From PERFO_ CURVE to D3T	Well Temperature (WTEP)	
	222	227

Perfo Zone From PERFO_ CURVE to D3T	Well Temperature (WTEP)	
	222	227

Perfo Zone From PERFO_ CURVE to D3T	Well Temperature (WTEP)	
	222	227

Gamma Ray (GR) (GAPI)		Discriminat ed CCL (CCLD) 3 (V) -1	Cable Speed (CS) (F/HR)		Tension (TENS) (LBF)	
0	150		0	5000	0	2000

Gamma Ray (GR) (GAPI)		Discriminat ed CCL (CCLD) 3 (V) -1	Cable Speed (CS) (F/HR)		Tension (TENS) (LBF)	
0	150		0	5000	0	2000

Gamma Ray (GR) (GAPI)		Discriminat ed CCL (CCLD) 3 (V) -1	Cable Speed (CS) (F/HR)		Tension (TENS) (LBF)	
0	150		0	5000	0	2000

Gamma Ray (GR) (GAPI)		Discriminat ed CCL (CCLD) 3 (V) -1	Cable Speed (CS) (F/HR)		Tension (TENS) (LBF)	
0	150		0	5000	0	2000

Gamma Ray (GR) (GAPI)		Discriminat ed CCL (CCLD) 3 (V) -1	Cable Speed (CS) (F/HR)		Tension (TENS) (LBF)	
0	150		0	5000	0	2000

Gamma Ray (GR) (GAPI)		Discriminat ed CCL (CCLD) 3 (V) -1	Cable Speed (CS) (F/HR)		Tension (TENS) (LBF)	
0	150		0	5000	0	2000

Gamma Ray (GR) (GAPI)		Discriminat ed CCL (CCLD) 3 (V) -1	Cable Speed (CS) (F/HR)		Tension (TENS) (LBF)	
0	150		0	5000	0	2000

Gamma Ray (GR) (GAPI)		Discriminat ed CCL (CCLD) 3 (V) -1	Cable Speed (CS) (F/HR)		Tension (TENS) (LBF)	
0	150		0	5000	0	2000

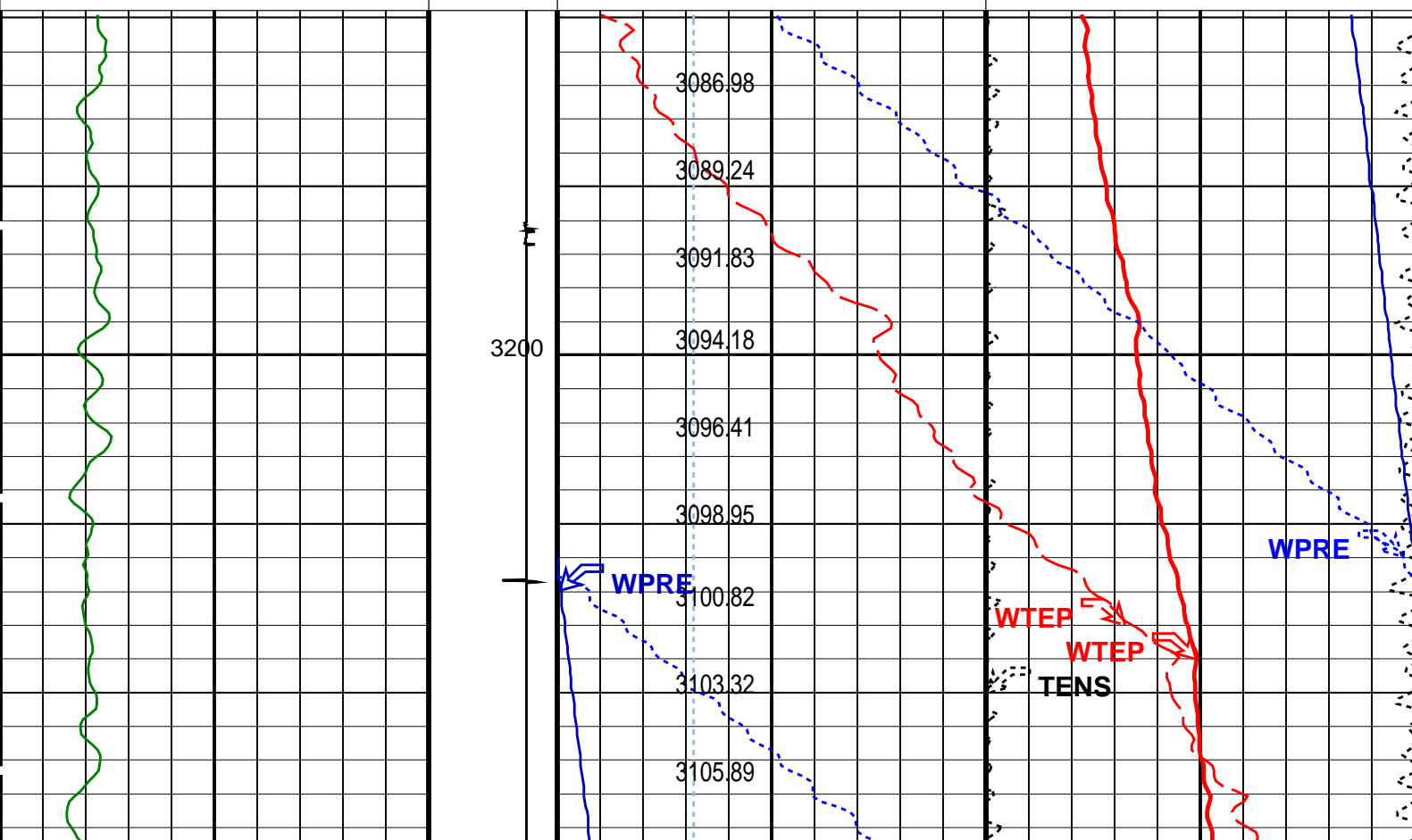
Gamma Ray (GR) (GAPI)		Discriminat ed CCL (CCLD) 3 (V) -1	Cable Speed (CS) (F/HR)		Tension (TENS) (LBF)	
0	150		0	5000	0	2000

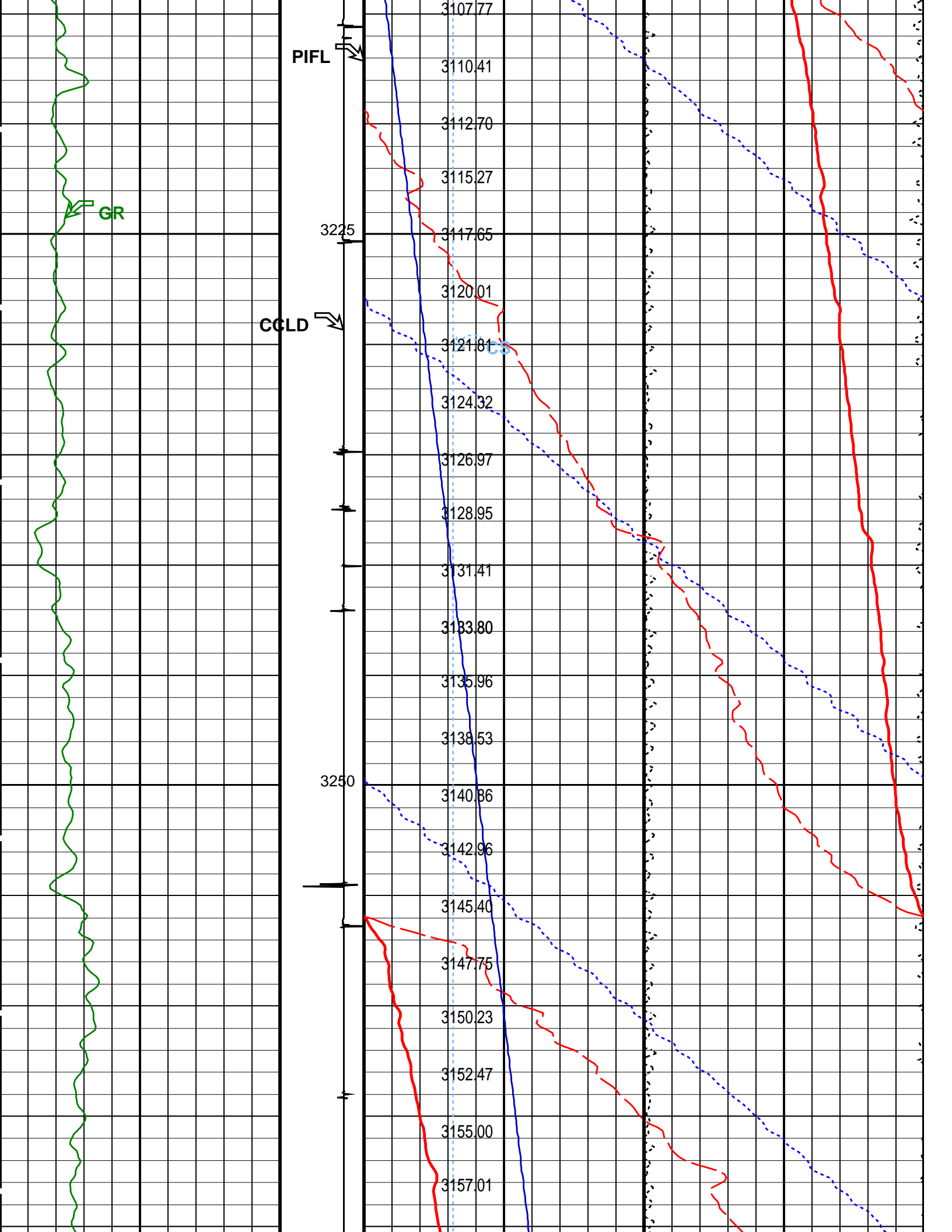
Gamma Ray (GR) (GAPI)		Discriminat ed CCL (CCLD) 3 (V) -1	Cable Speed (CS) (F/HR)		Tension (TENS) (LBF)	
0	150		0	5000	0	2000

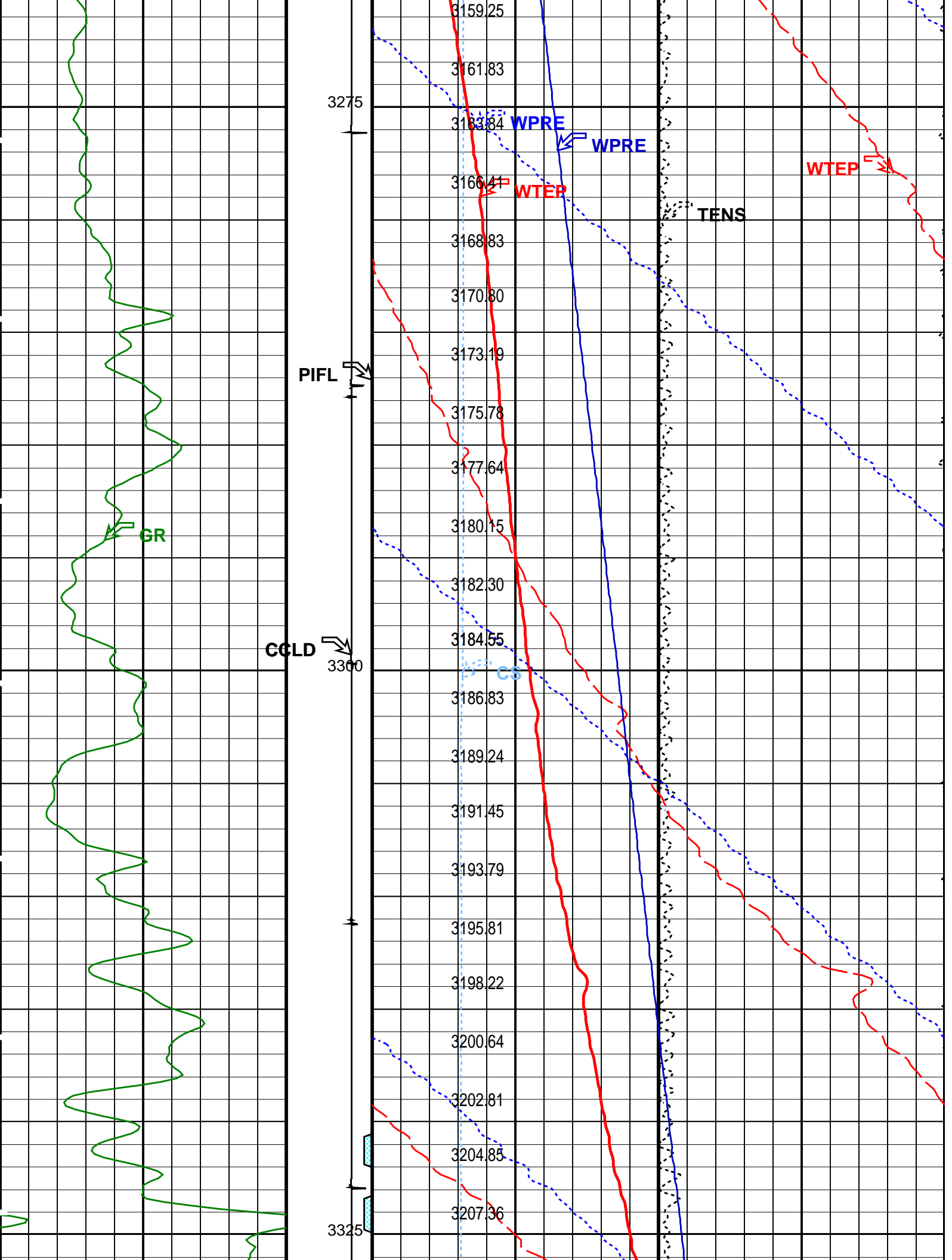
Gamma Ray (GR) (GAPI)		Discriminat ed CCL (CCLD) 3 (V) -1	Cable Speed (CS) (F/HR)		Tension (TENS) (LBF)	
0	150		0	5000	0	2000

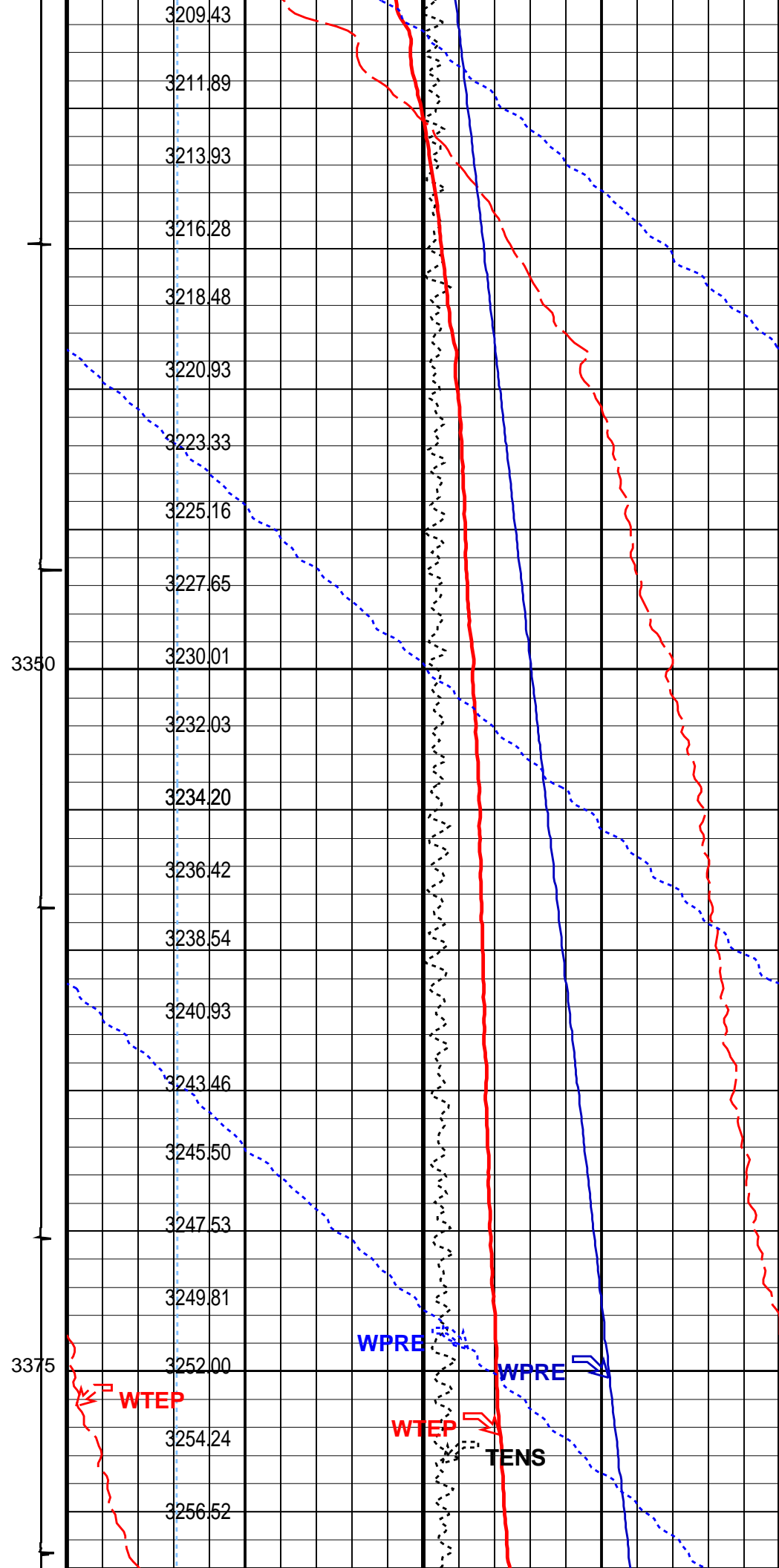
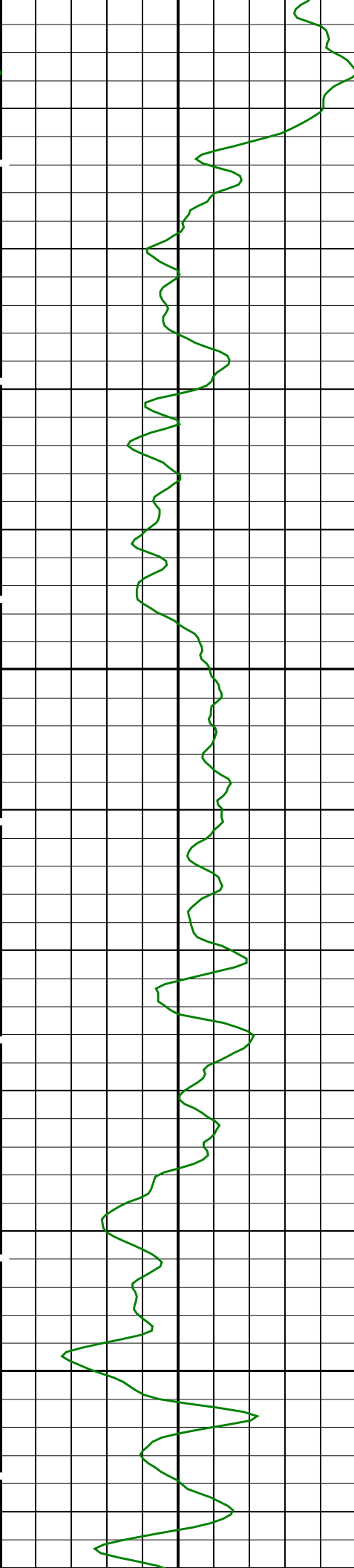
Gamma Ray (GR) (GAPI)		Discriminat ed CCL (CCLD) 3 (V) -1	Cable Speed (CS) (F/HR)		Tension (TENS) (LBF)	
0	150		0	5000	0	2000

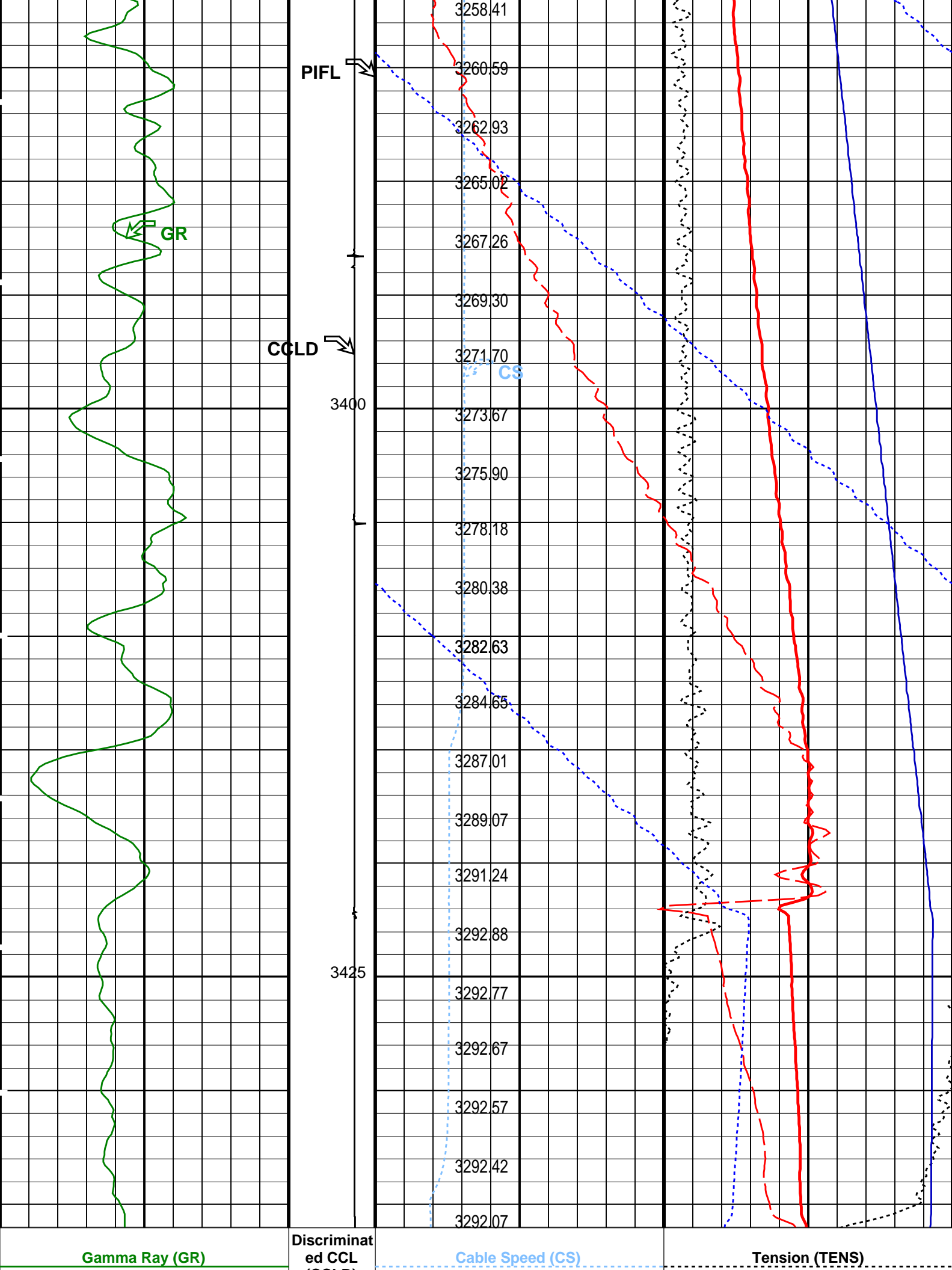
Gamma Ray (GR) (GAPI)		Discriminat ed CCL (CCLD) 3 (V) -1	Cable Speed (CS) (F/HR)		Tension (TENS) (LBF)	
0	150		0	5000	0	2000

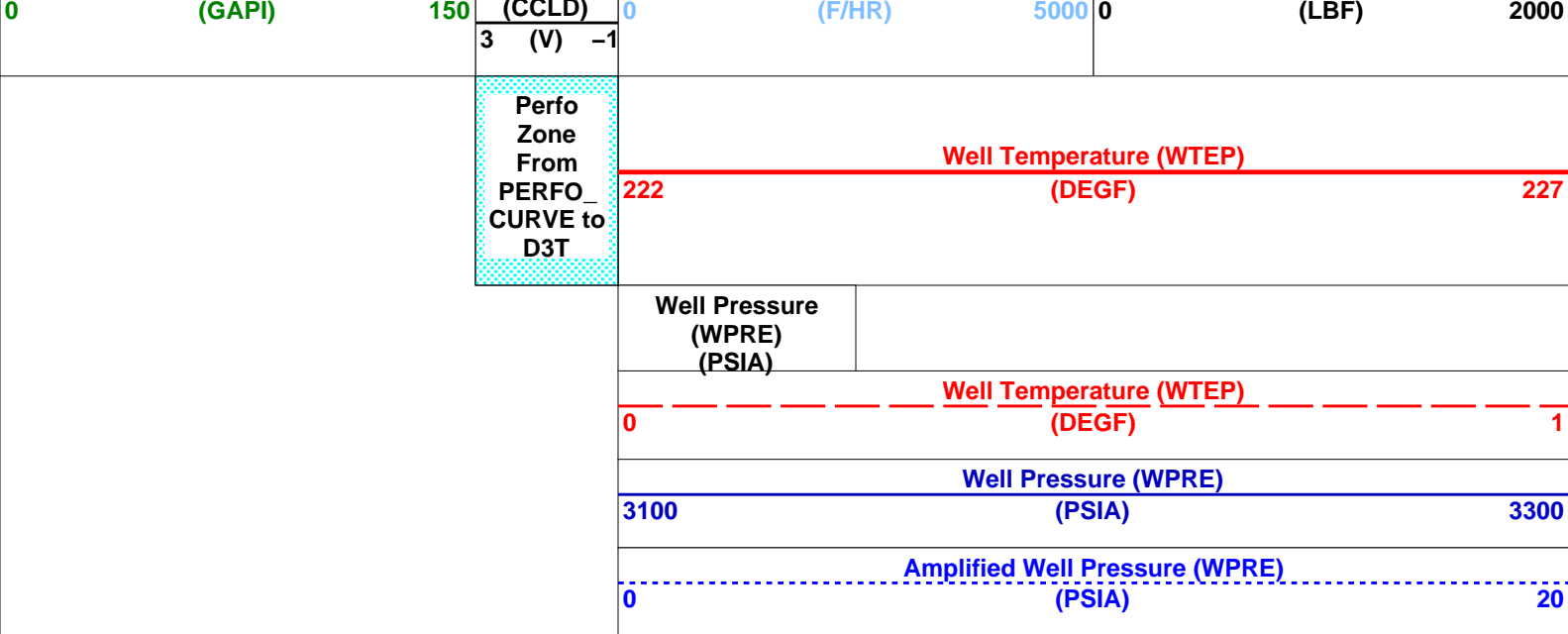












PIP SUMMARY

Time Mark Every 60 S

Format: PSP_1 Vertical Scale: 1:200 Graphics File Created: 12-May-2007 14:22

OP System Version: 14C0-302

MCM

PSPT-B 14C0-302

Parameters						
DLIS Name		Description			Value	
System and Miscellaneous						
DO		Depth Offset for Playback			-4.0	M
PP		Playback Processing			NORMAL	
Input DLIS Files						
DEFAULT	PSP_006LUP	FN:5	PRODUCER	12-May-2007 11:48	3440.0 M	3193.2 M
Output DLIS Files						
DEFAULT	PSP_015PUP	FN:14	PRODUCER	12-May-2007 14:22		

Company: Esso Australia Pty Ltd.

Well: F-2a

Field: Cobia

Rig: Prod4 / Crane

Country: Australia

Schlumberger

PSP
SBHP – GR
Survey