

Company: Esso Australia Pty Ltd.

Well: A-18B
Field: Cobia
Rig : Prod4 / Crane

Country: Australia

7 5/8" Posiset Plug
Setting Record

Prod4 / Crane
Rig :
Field: Cobia
Location: Gippsland
Well: A-18B
Company: Esso Australia Pty Ltd.

LOCATION	
Gippsland Basin Bass Strait	Elev.: K.B. 39 m G.L. -79 m D.F. 39 m
Permanent Datum: _____ Log Measured From: D.F. _____ Drilling Measured From: D.F. _____	Elev.: 0 m 32.4 m above Perm. Datum
State: Victoria	Max. Well Deviation 27 deg Longitude 148 18'32.741"E Latitude 038 26'57.582"S

Logging Date	7-Jun-2007
Run Number	2 through 4
Depth Driller	2661 m
Schlumberger Depth	2661 m
Bottom Log Interval	2568 m
Top Log Interval	2480 m
Casing Fluid Type	Production Fluids
Salinity	
Density	
Fluid Level	
BIT/CASING/TUBING STRING	
Bit Size	9.785 in
From	
To	
Casing/Tubing Size	7.625 in
Weight	29.7 lbn/ft
Grade	L-80
From	18.75 m
To	2760 m
Maximum Recorded Temperatures	224 degF
Logger On Bottom	7-Jun-2007
Unit Number	889
Recorded By	G Wright,S Gilbert.
Witnessed By	G Rimmer,R Morris.

	Oil Density	Run 1
	Water Salinity	
	Gas Gravity	
	Bo	
	Bw	
	1/Bg	
	Bubble Point Pressure	
	Bubble Point Temperature	
	Solution GOR	
	Maximum Deviation	27 deg
	CEMENTING DATA	
	Primary/Squeeze	Primary
	Casing String No	
	Lead Cement Type	
	Volume	
	Density	
	Water Loss	
	Additives	
	Tail Cement Type	
	Volume	
	Density	
	Water Loss	
	Additives	
	Expected Cement Top	
	Logging Date	
	Run Number	
	Depth Driller	
	Schlumberger Depth	
	Bottom Log Interval	
	Top Log Interval	
	Casing Fluid Type	
	Salinity	
	Density	
	Fluid Level	
	BIT/CASING/TUBING STRING	
	Bit Size	
	From	
	To	
	Casing/Tubing Size	
	Weight	
	Grade	
	From	
	To	
	Maximum Recorded Temperatures	
	Logger On Bottom	
	Unit Number	
	Recorded By	
	Witnessed By	

DEPTH SUMMARY LISTING

Date Created: 29-MAY-2007 7:27:44

Depth System Equipment

Depth Measuring Device		Tension Device		Logging Cable	
Type:	IDW-BE	Type:	PSDS/OSDS	Type:	2-32ZT
Serial Number:	6373	Serial Number:	325357	Serial Number:	24425
Calibration Date:	05-Jul-2006	Calibration Date:	26-Apr-2007	Length:	6000.00 M
Calibrator Serial Number:	9	Calibrator Serial Number:	1174	Conveyance Method: Wireline Rig Type: Offshore_Fixed	
Calibration Cable Type:	2-32ZT	Calibration Gain:	0.91		
Wheel Correction 1:	-2	Calibration Offset:	217.00		
Wheel Correction 2:	-4				

Depth Control Parameters

Log Sequence:	Subsequent Log In the Well
Reference Log Name:	ExxonMobil Correlation Logs
Reference Log Run Number:	1
Reference Log Date:	May-2007

Depth Control Remarks

1. IDW used as primary depth control.
2. Z chart as secondary back-up.
3.
4.
5.
6.

DISCLAIMER

THE USE OF AND RELIANCE UPON THIS RECORDED-DATA BY THE HEREIN NAMED COMPANY (AND ANY OF ITS AFFILIATES, PARTNERS, REPRESENTATIVES, AGENTS, CONSULTANTS AND EMPLOYEES) IS SUBJECT TO THE TERMS AND CONDITIONS AGREED UPON BETWEEN SCHLUMBERGER AND THE COMPANY, INCLUDING: (a) RESTRICTIONS ON USE OF THE RECORDED-DATA; (b) DISCLAIMERS AND WAIVERS OF WARRANTIES AND REPRESENTATIONS REGARDING COMPANY'S USE OF AND RELIANCE UPON THE RECORDED-DATA; AND (c) CUSTOMER'S FULL AND SOLE RESPONSIBILITY FOR ANY INFERENCE DRAWN OR DECISION MADE IN CONNECTION WITH THE USE OF THIS RECORDED-DATA.

OTHER SERVICES1
OS1: PLT Survey
OS2:
OS3:
OS4:
OS5:

REMARKS: RUN NUMBER 1
Log correlated to Solar Composite Log provided by client
Objective : Set 7 5/8" Posiset Plug at 2568m MDKB to isolate the
Water producing perforations @ 2574m MDKB .
Dump 1m of Cement on top of Plug.
Maximum Well Deviation : 27 deg @ 2051m MDKB
Top of Seal : 2568m MDKB
CCL to Top of Seal : 7.2m

DOWNHOLE EQUIPMENT						DOWNHOLE EQUIPMENT					
AH-SWBS-B 761				11.52		AH-SWBS-B 763				15.95	
AH-SWBS-B 762				10.83		AH-SWBS-B 762				15.27	
AH-SWBS-B 763				10.14		AH-SWBS-B 761				14.58	
MH-SWHS-A 753 MH-SWHS-A 753	CCL Tachomete Cable Cur Head Volt Tension			9.46		MH-SWHS-A 756				13.89	
CCL-L CCL-L				9.13	TOOL ZERO	CCL-L CCL-L	Tension CCL			13.56	TOOL ZERO
MPSU-CA MPSU-CA				8.67		HPI Dump Bailer				13.11	

MPEX-BA
MPEX-BA

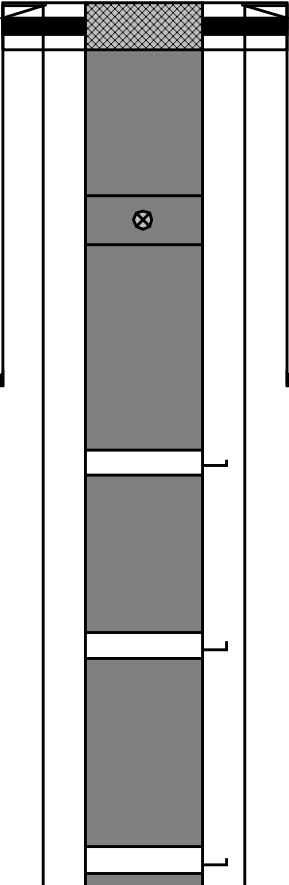
2.26

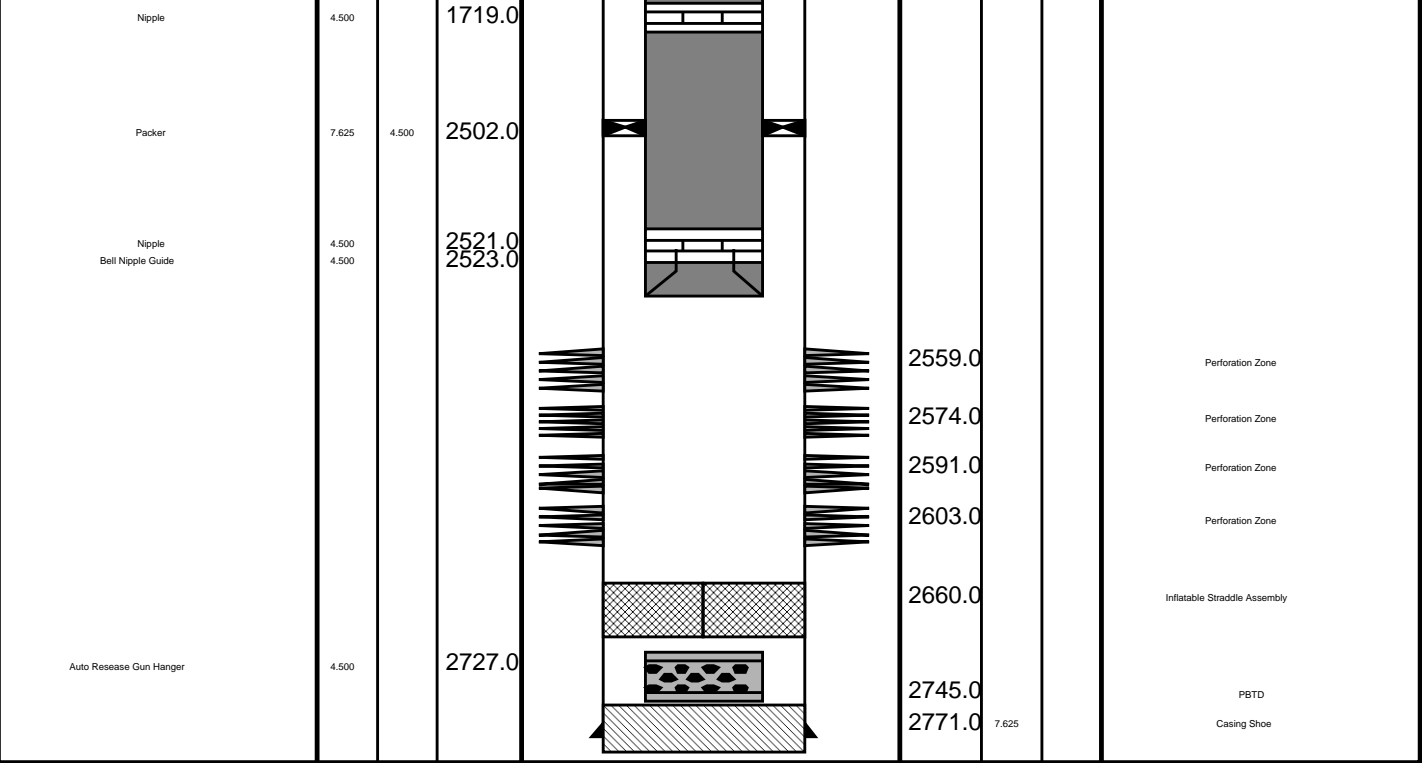
TOOL BOTTOM

MAXIMUM STRING DIAMETER 2.13 IN
MEASUREMENTS RELATIVE TO TOOL ZERO
ALL LENGTHS IN METERS

TOOL BOTTOM

MAXIMUM STRING DIAMETER 2.13 IN
MEASUREMENTS RELATIVE TO TOOL ZERO
ALL LENGTHS IN METERS

Production String	(in)		(m)	Well Schematic	(m)	(in)		Casing String
	OD	ID	MD		MD	OD	ID	
Tubing Tubing Hanger	4.500		18.8		18.9	7.625		Casing String Liner Hanger Casing String
	10.750	4.500	18.7		18.9	10.750	7.625	
					18.8	10.750		
Shut-in Valve	4.500		445.0					
Gas Lift Mandrel	4.500		954.0		704.0	10.750		Casing Shoe
Gas Lift Mandrel	4.500		1444.0					
Gas Lift Mandrel	4.500		1703.0					



Job Events Summary

MAXIS Field Log

Schlumberger Job Event Summary

Time	Elapsed Time	Depth (M)	File
Log Pass (down)	7-Jun-2007 20:16	001:07	0.0 - 2508.2 MPBT_101LDP
Log Pass (up)	7-Jun-2007 21:35	000:06	2600.4 - 2546.1 MPBT_105LUP
Simulated Log	7-Jun-2007 21:44	000:50	MPBT_106LUP
Log Pass (up)	7-Jun-2007 22:34	000:10	2560.8 - 2490.8 MPBT_108LUP
Log Pass (up)	8-Jun-2007 1:31	000:15	2555.9 - 2499.4 PERFO_116LUP
Log Pass (up)	8-Jun-2007 3:23	000:07	2555.6 - 2498.9 PERFO_120LUP



Cement Dump Bailer

MAXIS Field Log

Output DLIS Files

DEFAULT PERFO_120LUP FN:111 PRODUCER 08-Jun-2007 03:23 2555.6 M 2498.9 M

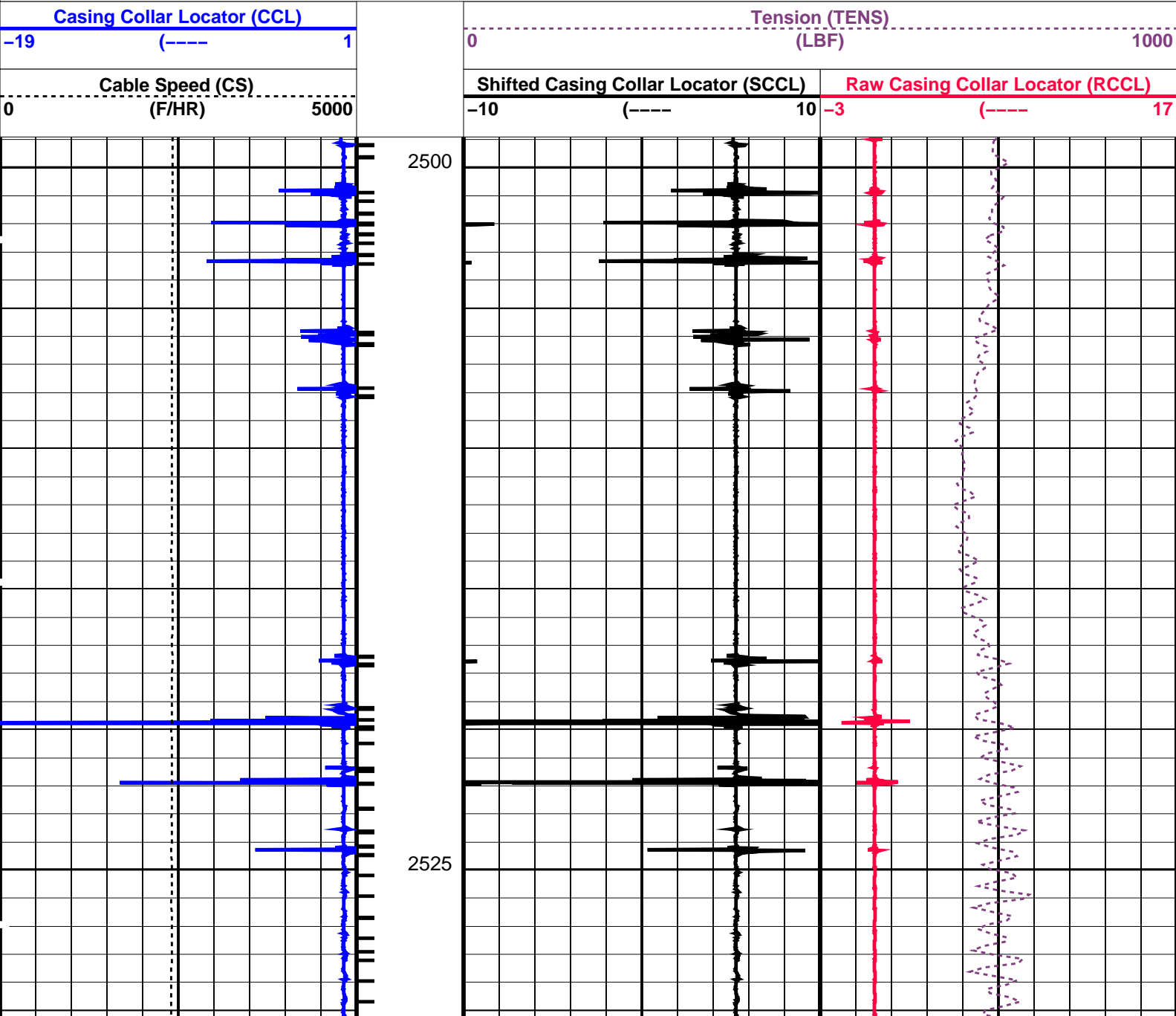
OP System Version: 14C0-302
MCM

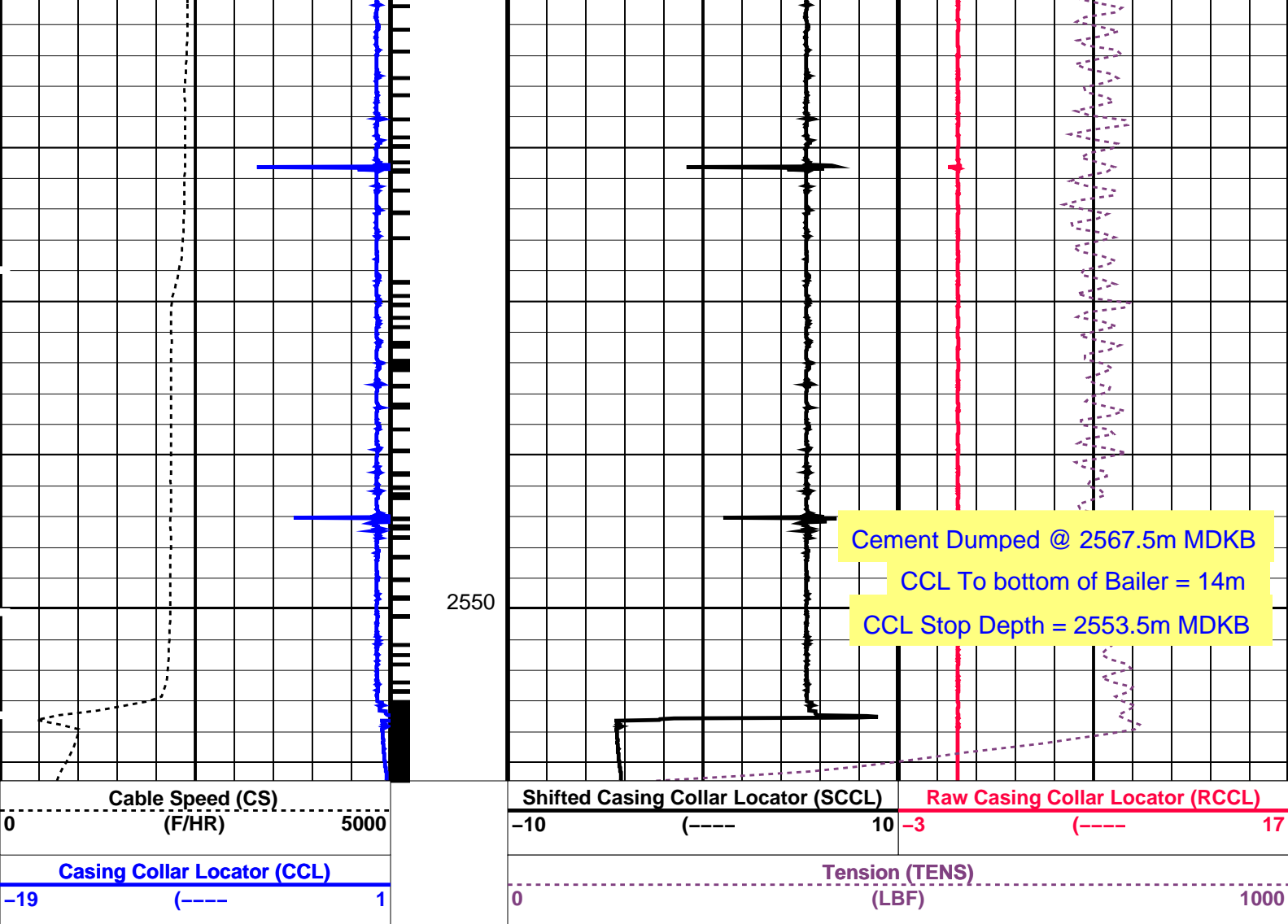
SHM_GUN 14C0-302 CCL-L 14C0-302

PIP SUMMARY

└─ Casing Collars

Time Mark Every 60 S





PIP SUMMARY

Time Mark Every 60 S

Parameters

DLIS Name	Description	Value
CCL-L: Casing Collar Locator		
CCLD	CCL reset delay	12 IN
CCLT	CCL Detection Level	0.3 V

Format: PERFO Vertical Scale: 1:200 Graphics File Created: 08-Jun-2007 03:23

OP System Version: 14C0-302
MCM

SHM_GUN 14C0-302 CCL-L 14C0-302

Output DLIS Files

DEFAULT PERFO_120LUP FN:111 PRODUCER 08-Jun-2007 03:23



Water Dump Bailer

Output DLIS Files

DEFAULT PERFO_116LUP FN:107 PRODUCER 08-Jun-2007 01:31 2555.9 M 2499.4 M

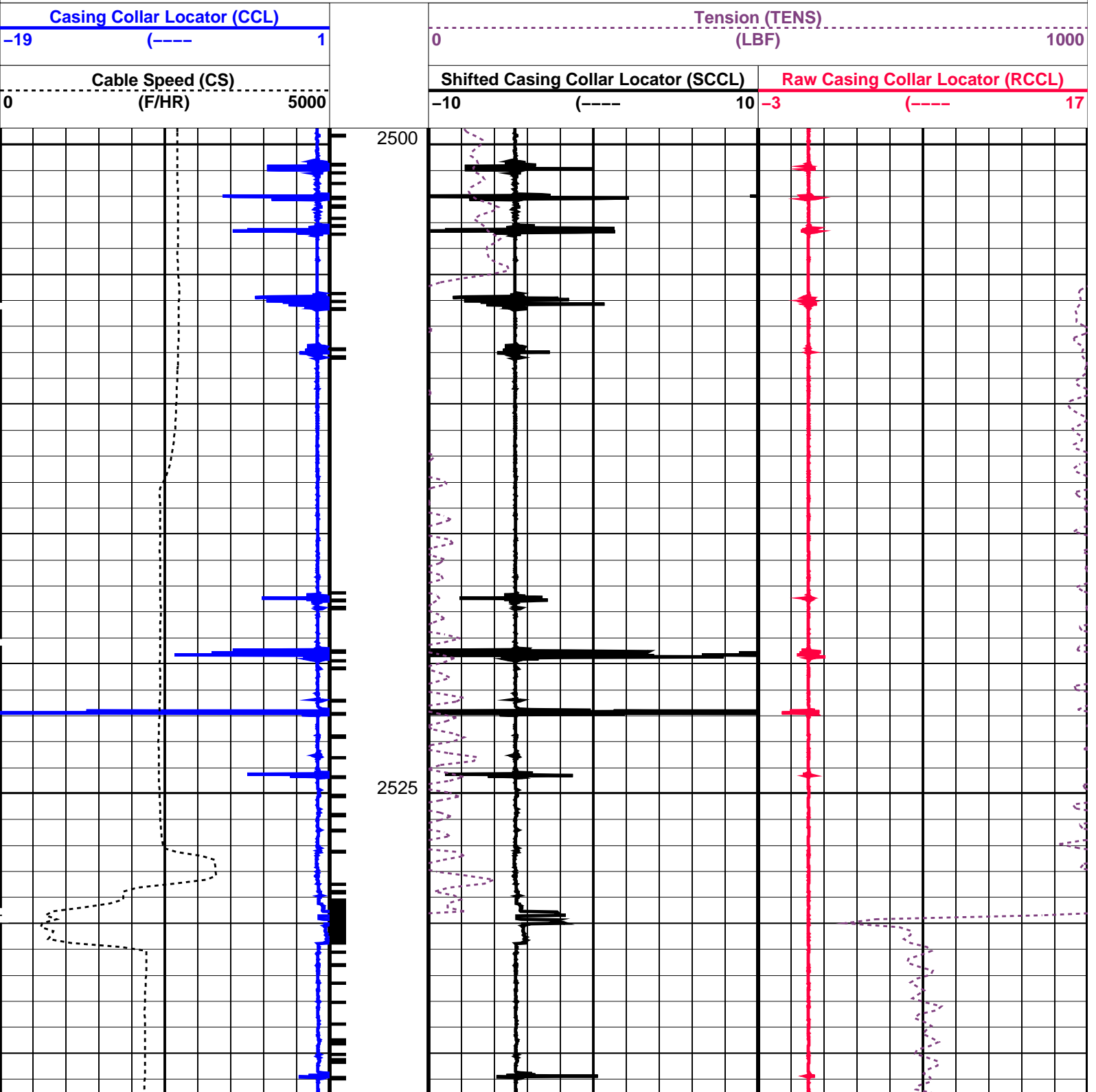
OP System Version: 14C0-302
MCM

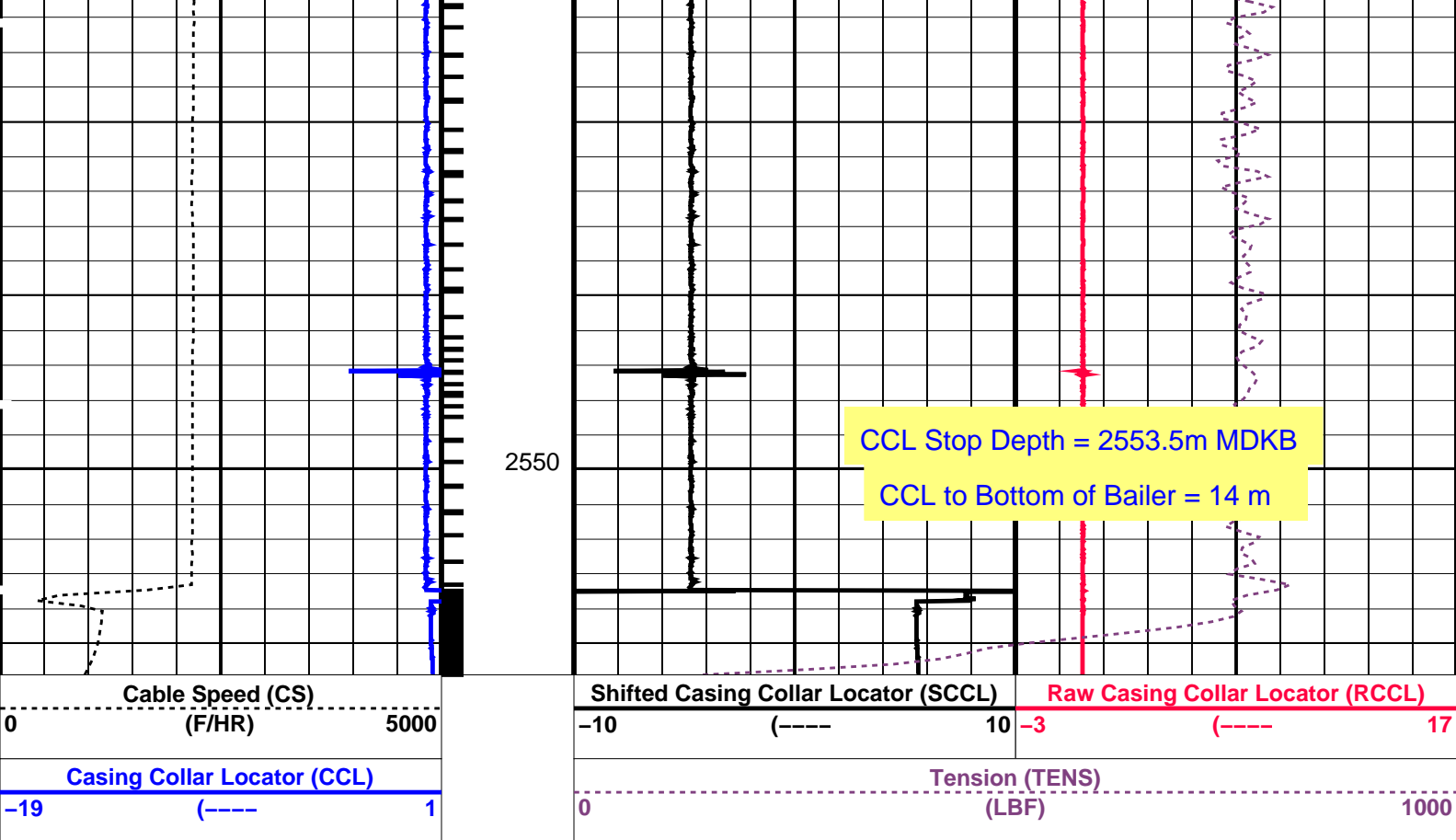
SHM_GUN 14C0-302 CCL-L 14C0-302

PIP SUMMARY

└─ Casing Collars

Time Mark Every 60 S





PIP SUMMARY
Time Mark Every 60 S
Casing Collars

Parameters		
DLIS Name	Description	Value
CCLD	CCL-L: Casing Collar Locator	12 IN
CCLT	CCL reset delay	0.3 V
CCLT	CCL Detection Level	

Format: PERFO Vertical Scale: 1:200 Graphics File Created: 08-Jun-2007 01:31

OP System Version: 14C0-302			
MCM			
SHM_GUN	14C0-302	CCL-L	14C0-302

Output DLIS Files			
DEFAULT	PERFO_116LUP	FN:107 PRODUCER	08-Jun-2007 01:31

Plug Setting

MAXIS Field Log

Output DLIS Files			
DEFAULT	MPBT 106LUP	FN:97 PRODUCER	07-Jun-2007 21:44

OP System Version: 14C0-302

MCM

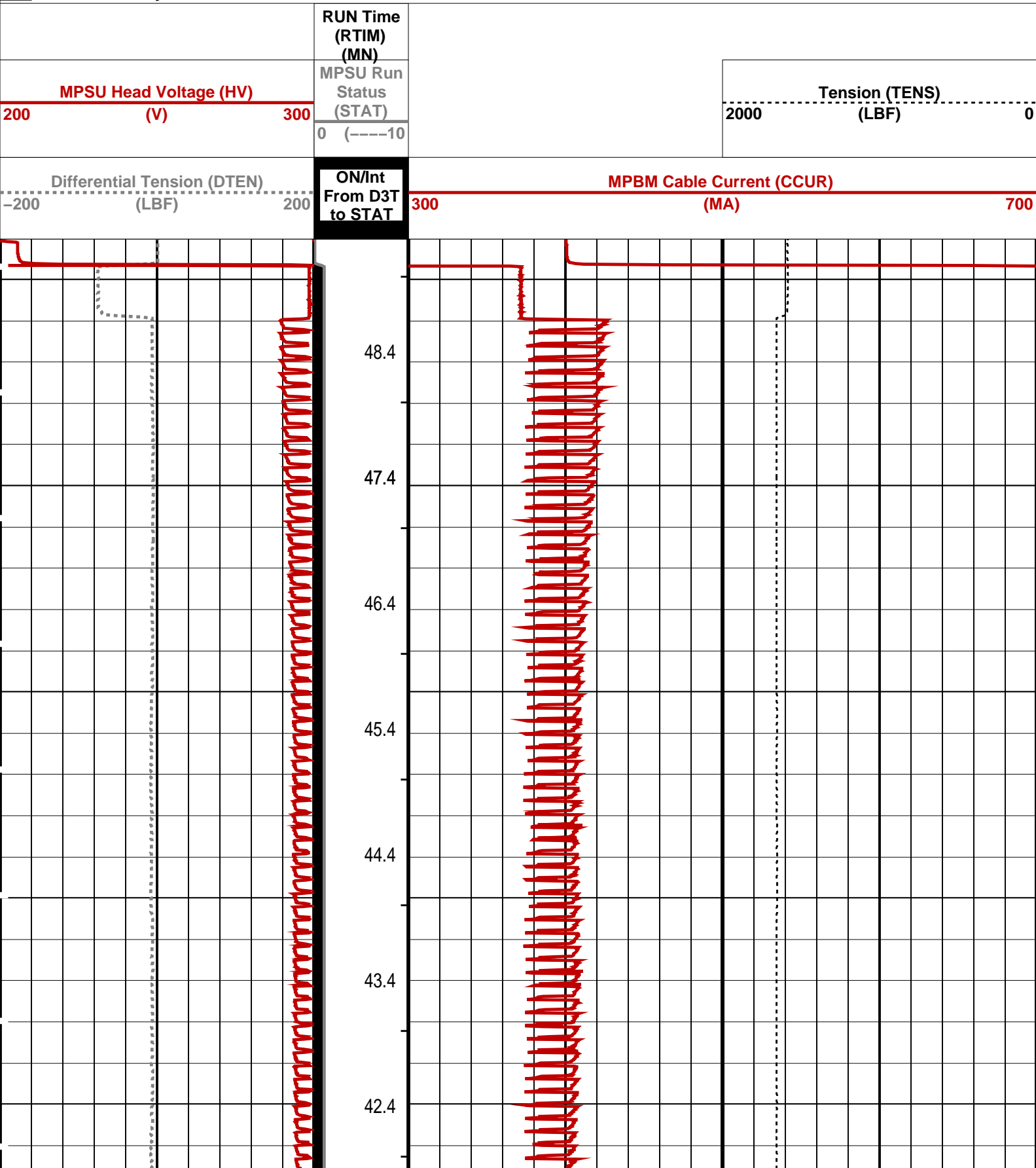
MPEX-BA 14C0-302
CCL-L 14C0-302

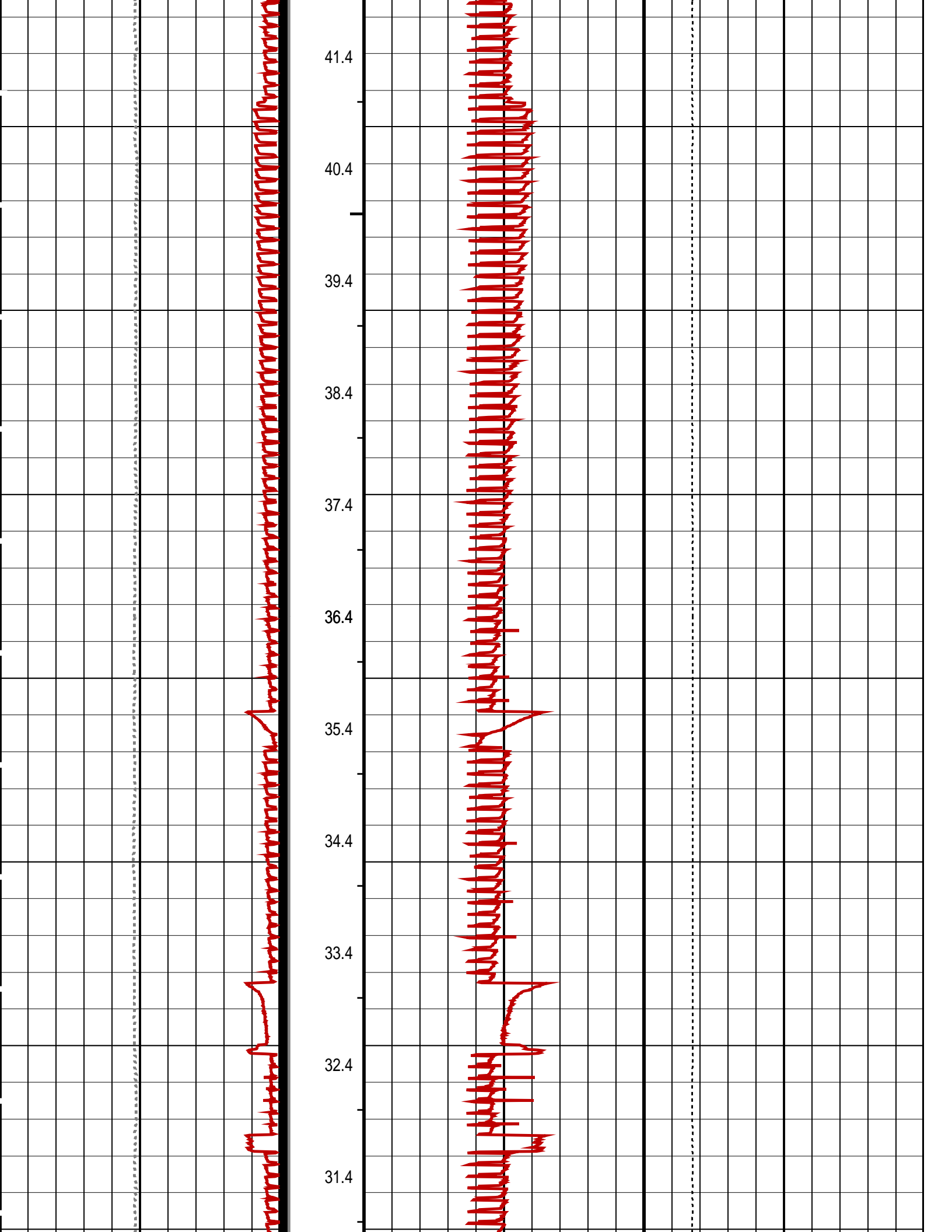
MPSU-CA 14C0-302

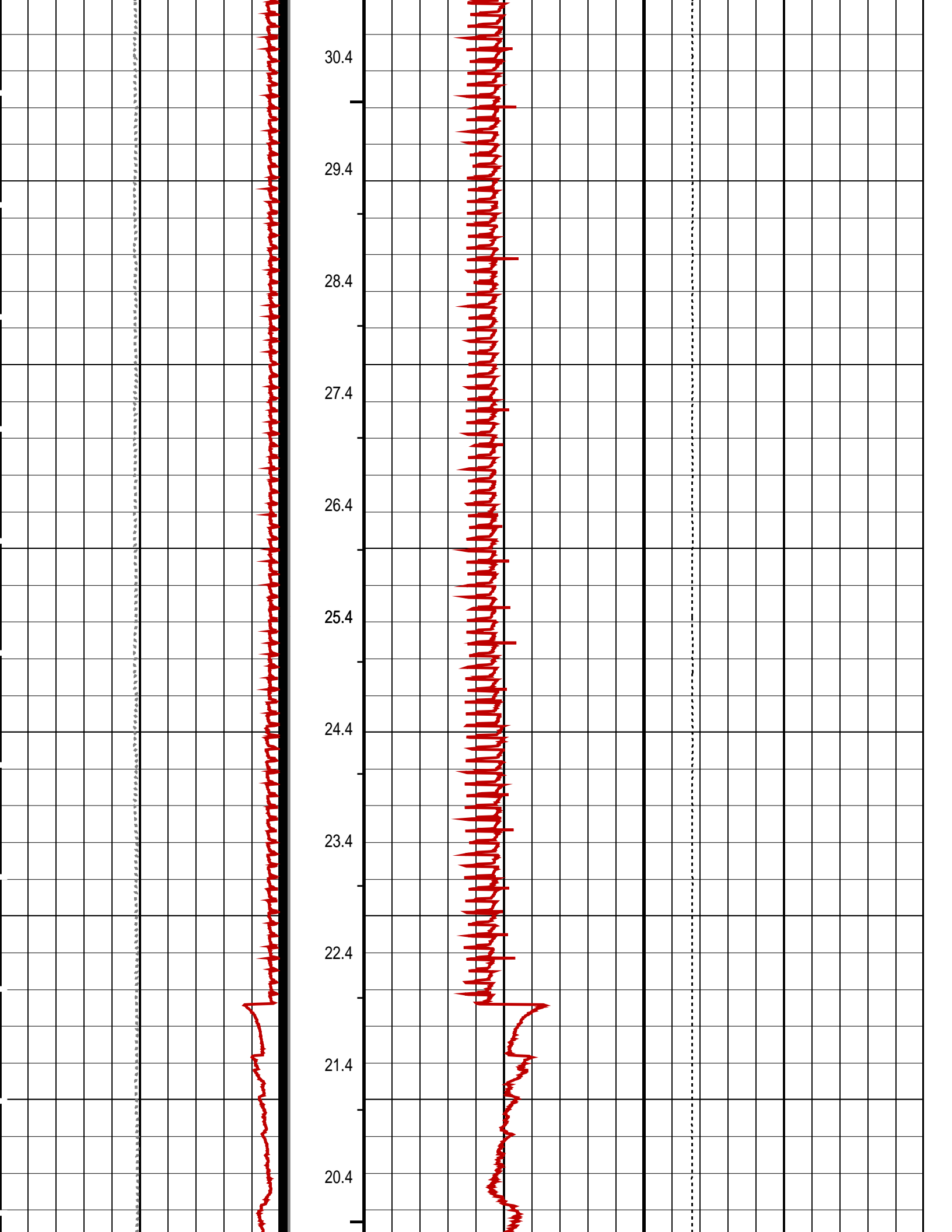
PIP SUMMARY

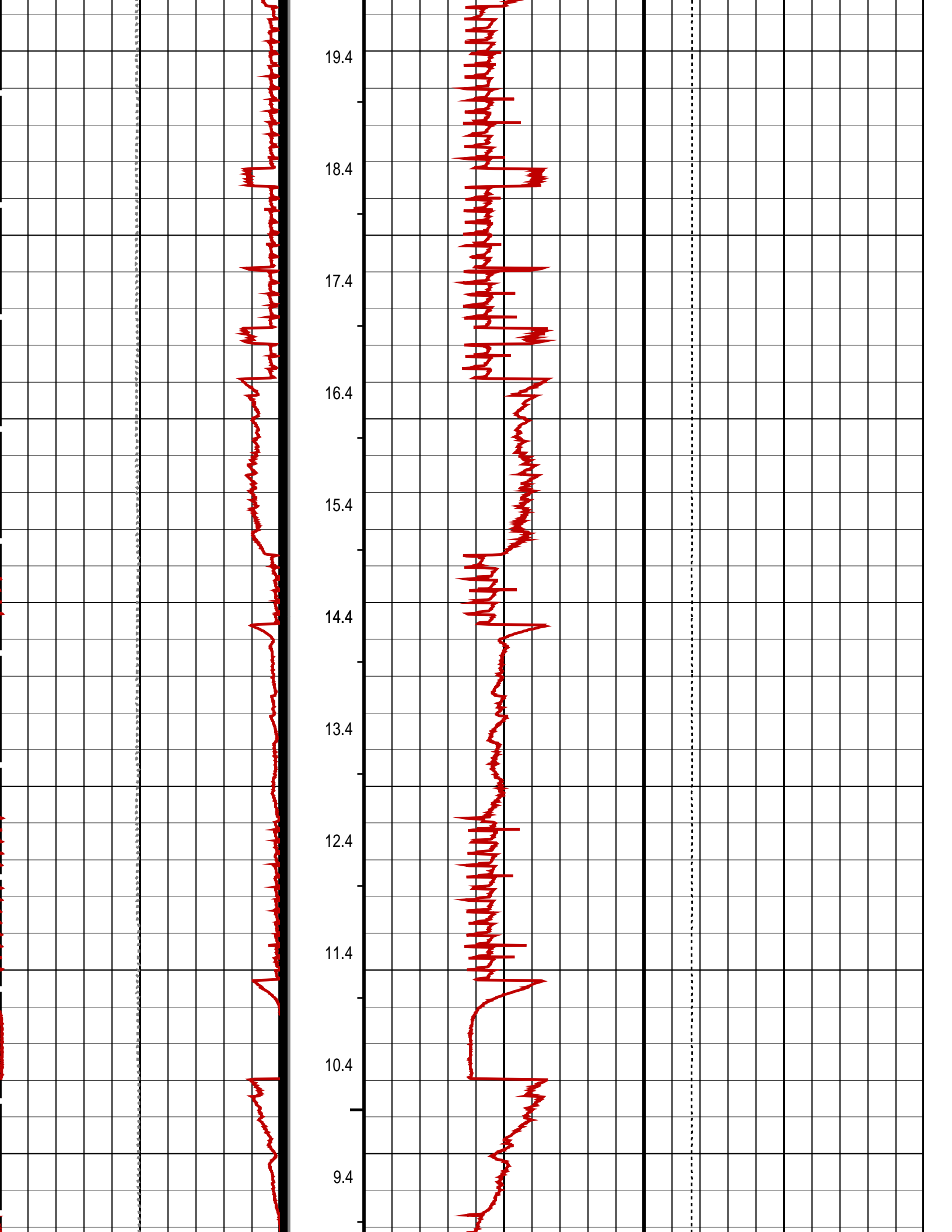
- ↓ MPSU Run Time Every 1 MN
- MPSU Run Time Every 10 MN

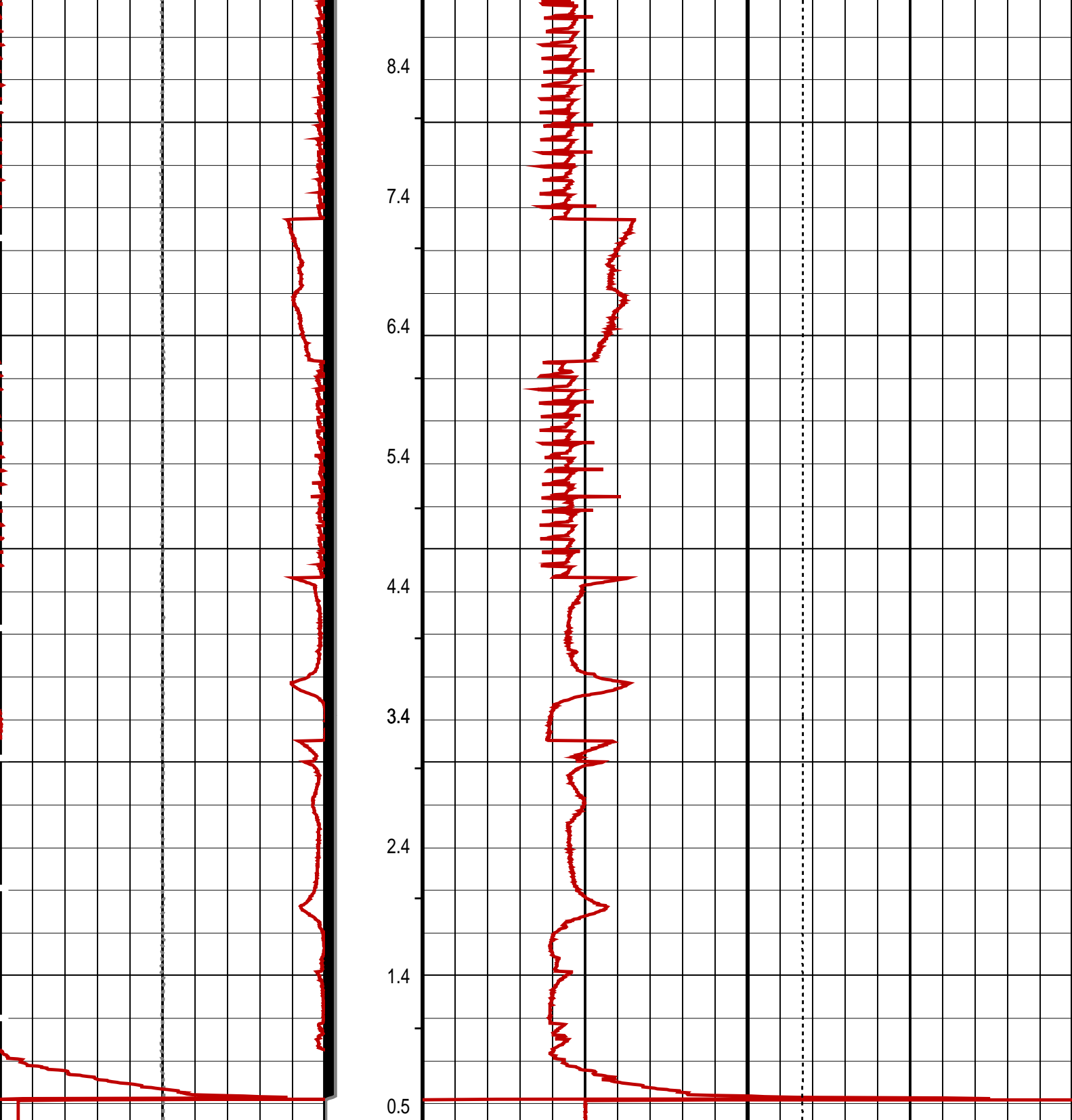
Time Mark Every 60 S











Differential Tension (DTEN) (LBF)	ON/Int From D3T to STAT	MPBM Cable Current (CCUR) (MA)
-200 200	300 700	2000 0
MPSU Head Voltage (HV) (V)	MPSU Run Status (STAT)	Tension (TENS) (LBF)
200 300	0 (----10)	
	RUN Time (RTIM) (MN)	

PIP SUMMARY


- ↓ MPSU Run Time Every 1 MN
- MPSU Run Time Every 10 MN

Time Mark Every 60 S

Parameters		
DLIS Name	Description	Value
IPUMP	MPSU-CA: MECHANICAL PLUGBACK SETTING UNIT Intensifier Pump	TRUE
Format: MPBT	Vertical Scale: 1:600	Graphics File Created: 07-Jun-2007 21:44

OP System Version: 14C0-302			
MCM			
MPEX-BA	14C0-302	MPSU-CA	14C0-302
CCL-L	14C0-302		

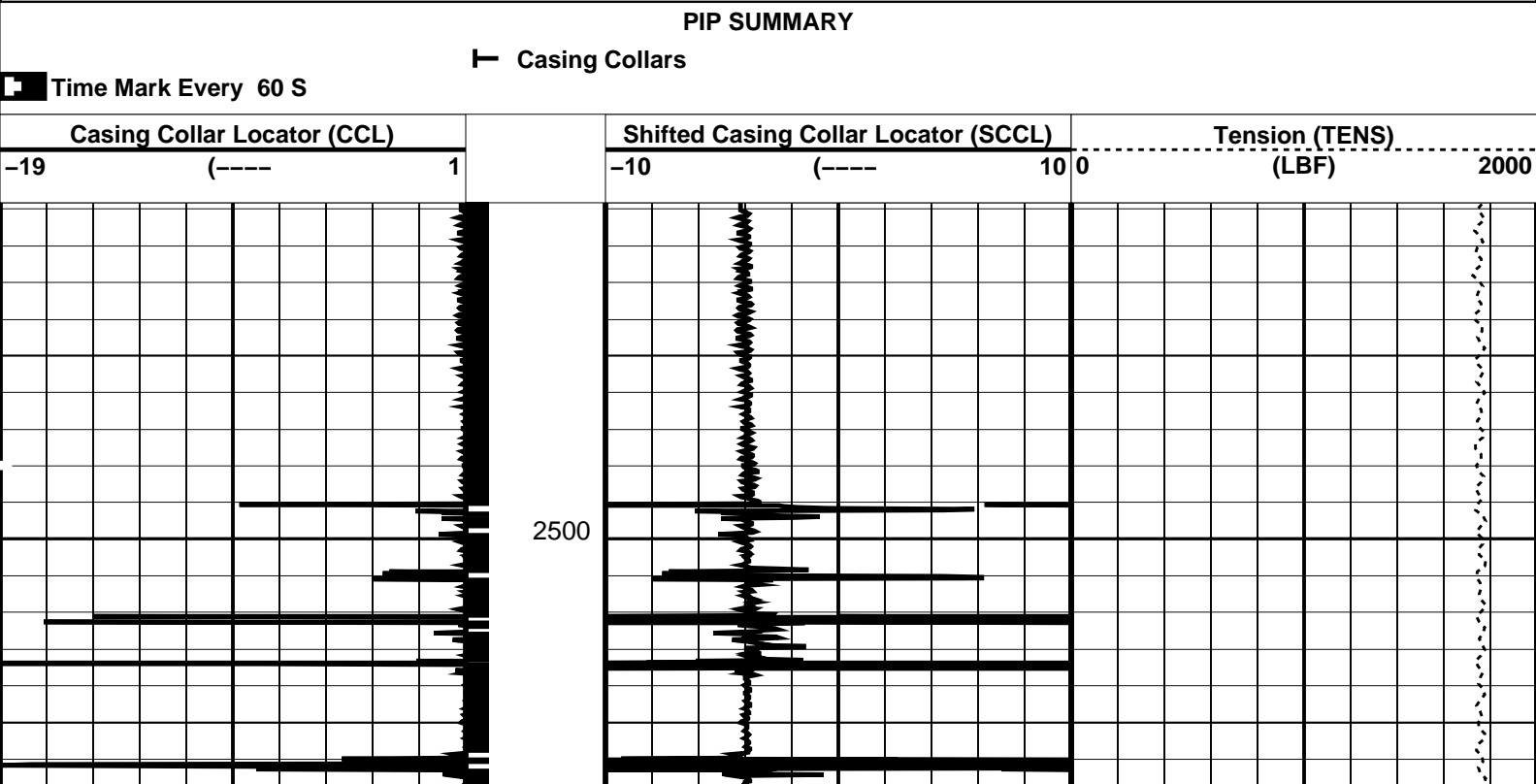
Output DLIS Files			
DEFAULT	MPBT_106LUP	FN:97	PRODUCER 07-Jun-2007 21:44

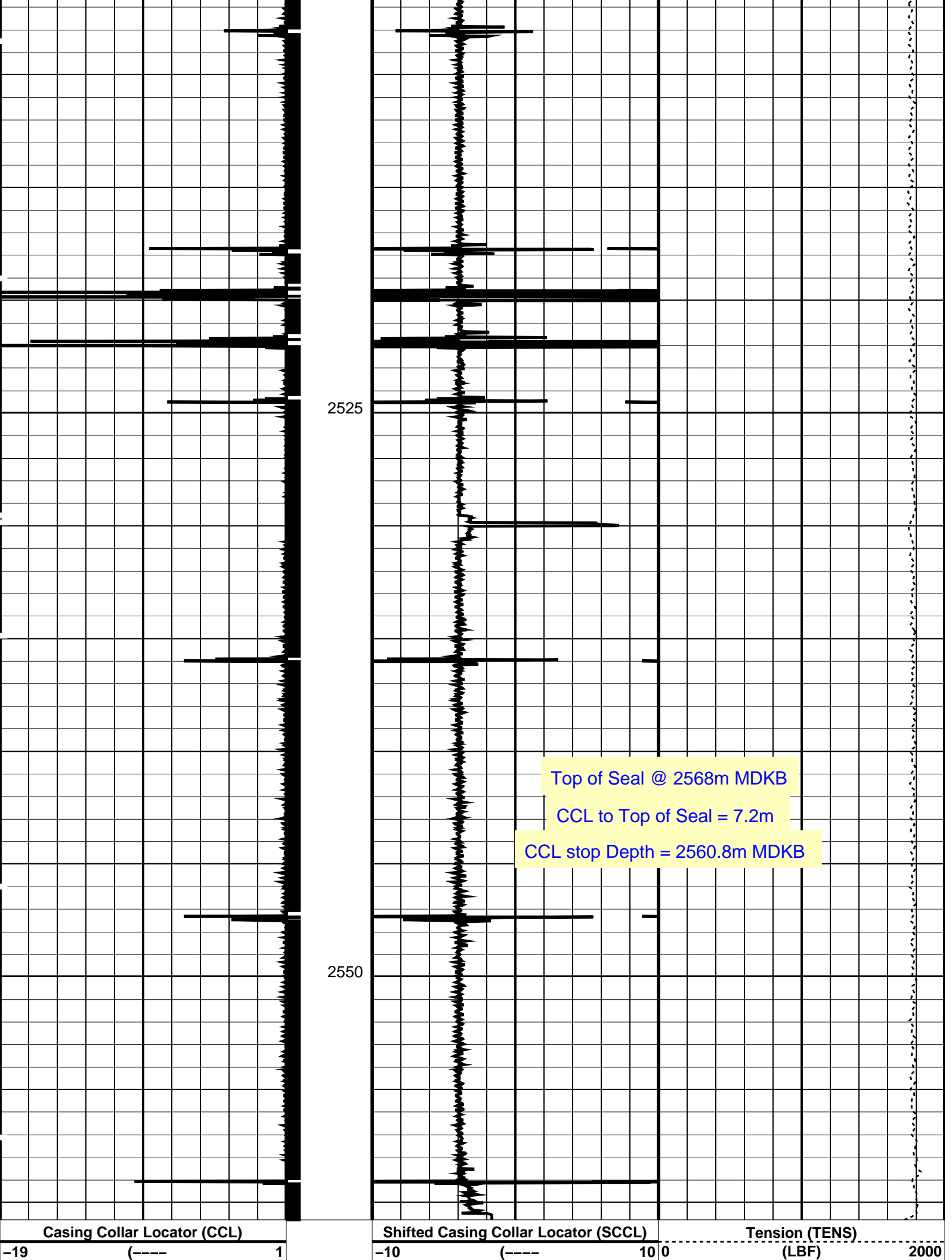


Plug Setting Pass

MAXIS Field Log

Output DLIS Files			
DEFAULT	MPBT_108LUP	FN:99	PRODUCER 07-Jun-2007 22:34
OP System Version: 14C0-302			
MCM			
MPEX-BA	14C0-302	MPSU-CA	14C0-302
CCL-L	14C0-302		





└ Casing Collars

DLIS Name

Value

CCLD
CCLT

CCL reset delay

12	IN
0.3	V

Graphics File Created: 07-Jun-2007 22:34

MCM

14C0-302

07-Jun-2007 22:34



MAXIS Field Log

2546.1 M

MCM

14C0-302

└ Casing Collars

Casing Collar Locator (CCL)

-19 (----- 1

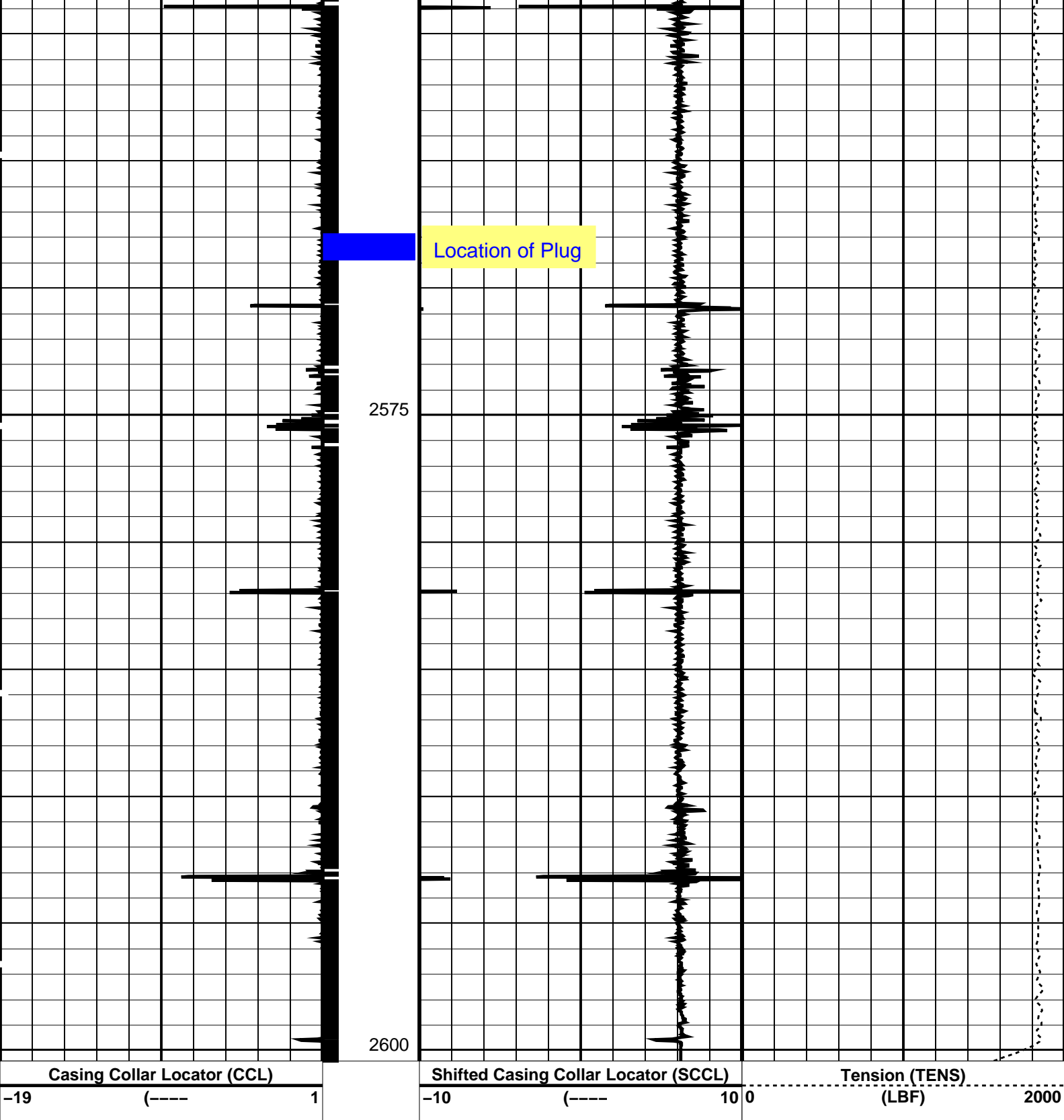
Shifted Casing Collar Locator (SCCL)

-10 (----- 10

Tension (TENS)

(LBF) 2000

2550



PIP SUMMARY

Time Mark Every 60 S

Casing Collars

Parameters		
DLIS Name	Description	Value
CCLD	CCL-L: Casing Collar Locator	12 IN
CCLT	CCL reset delay	0.3 V
	CCL Detection Level	

MPEX-BA	14C0-302	MCM	MPSU-CA	14C0-302
CCL-L	14C0-302			
Output DLIS Files				
DEFAULT	MPBT_105LUP	FN:96	PRODUCER	07-Jun-2007 21:35
Company: Esso Australia Pty Ltd.				
Well: A-18B				
Field: Cobia				
Rig : Prod4 / Crane				
Country: Australia				
7 5/8" Posiset Plug Setting Record				