

Company: Esso Australia Pty Ltd.

Well: HLA A7a

Field: Hailbut

Rig: 453

Country: Australia

MXAR Gun Hanger 4-1/2" HSD
Setting Record
4-Jun-2007

Bass Strait		Elev.: K.B. 29.46 m
Gippsland Basin		G.L. -72.5 m
		D.F. 29.46 m
Permanent Datum:	Mean Sea Level	Elev.: 0 m
Log Measured From:	Drill Floor	29.5 m above Perm. Datum
Drilling Measured From:	Drill Floor	
State: Victoria	Max. Well Deviation 42 deg	Longitude E 148 19' 12.756" Latitude S 38 24' 15.043"

Logging Date	4-Jun-2007		
Run Number	1		
Depth Driller	3032 m		
Schlumberger Depth	2991 m		
Bottom Log Interval	2830.5 m		
Top Log Interval	2828 m		
Casing Fluid Type	Inited Seawater		
Salinity			
Density	8.55 g/cm3		
Fluid Level	0 m		
BIT/CASING/TUBING STRING			
Bit Size	8.500 in		
From	552.2 m		
To	3032 m		
Casing/Tubing Size	7.000 in		
Weight	26 lbm/ft		
Grade			
From	12 m		
To	3031.5 m		
Maximum Recorded Temperatures			
Logger On Bottom	4-Jun-2007	3:00	
Unit Number	41	AUSL	
Recorded By	Chris Rowand		
Witnessed By	Mr R.Spence / Mr G.Campbell		

PVT DATA				Run 1	Run 2	Run
Oil Density						
Water Salinity						
Gas Gravity						
Bo						
Bw						
1/Bg						
Bubble Point Pressure						
Bubble Point Temperature						
Solution GOR						
Maximum Deviation				42 deg		
CEMENTING DATA						
Primary/Squeeze				Primary		
Casing String No						
Lead Cement Type						
Volume						
Density						
Water Loss						
Additives						
Tail Cement Type						
Volume						
Density						
Water Loss						
Additives						
Expected Cement Top						
Logging Date						
Run Number						
Depth Driller						
Schlumberger Depth						
Bottom Log Interval						
Top Log Interval						
Casing Fluid Type						
Salinity						
Density						
Fluid Level						
BIT/CASING/TUBING STRING						
Bit Size						
From						
To						
Casing/Tubing Size						
Weight						
Grade						
From						
To						
Maximum Recorded Temperatures						
Logger On Bottom						
Unit Number						
Recorded By						
Witnessed By						

DEPTH SUMMARY LISTING

Date Created: 4-JUN-2007 5:18:30

Depth System Equipment

Depth Measuring Device		Tension Device		Logging Cable	
Type:	IDW-H	Type:	CMTD-B/A	Type:	7-46V-XS
Serial Number:	797	Serial Number:	1721	Serial Number:	76075
Calibration Date:	06-Sep-2006	Calibration Date:	3-Jun-2007	Length:	5979.87 M
Calibrator Serial Number:	1009	Calibrator Serial Number:	1051	Conveyance Method:	Wireline
Calibration Cable Type:	7-46V-XS	Calibration Gain:	0.81	Rig Type:	Offshore_Fixed
Wheel Correction 1:	-7	Calibration Offset:	-814.00		
Wheel Correction 2:	-5				

Depth Control Parameters

Log Sequence:	First Log In the Well
Rig Up Length At Surface:	53.71 M
Rig Up Length At Bottom:	53.69 M
Rig Up Length Correction:	0.02 M
Stretch Correction:	2.20 M
Tool Zero Check At Surface:	-2.81 M

Depth Control Remarks

1. Correlated to LWD GeoVision RM 200MD Log
2. Used IDW as primary depth control
3. Used Z-chart as secondary depth control
- 4.
5. Difference between wireline down log and LWD was -5.6 M
6. I.E. wireline was 5.6 M deeper

DISCLAIMER

THE USE OF AND RELIANCE UPON THIS RECORDED-DATA BY THE HEREIN NAMED COMPANY (AND ANY OF ITS AFFILIATES, PARTNERS, REPRESENTATIVES, AGENTS, CONSULTANTS AND EMPLOYEES) IS SUBJECT TO THE TERMS AND CONDITIONS AGREED UPON BETWEEN SCHLUMBERGER AND THE COMPANY, INCLUDING: (a) RESTRICTIONS ON USE OF THE RECORDED-DATA; (b) DISCLAIMERS AND WAIVERS OF WARRANTIES AND REPRESENTATIONS REGARDING COMPANY'S USE OF AND RELIANCE UPON THE RECORDED-DATA; AND (c) CUSTOMER'S FULL AND SOLE RESPONSIBILITY FOR ANY INFERENCE DRAWN OR DECISION MADE IN CONNECTION WITH THE USE OF THIS RECORDED-DATA.







OTHER SERVICES1	OTHER SERVICES2
OS1: GR-CCL	OS1:
OS2:	OS2:
OS3:	OS3:
OS4:	OS4:
OS5:	OS5:
REMARKS: RUN NUMBER 1	REMARKS: RUN NUMBER 2
Log correlated to LWD Geovision RM 200MD Log provided by the client.	
Objective: set MXAR gun hanger with 4–1/2" HSD guns.	
Perforation Interval: 2828.0 – 2830.5 m	
CCL to Top Shot = 11.66 m	
CCL Stop Depth = 2816.34 m	

HUD was not tagged					
Schlumberger Crew:					
Operators = P. Flood & K.Kerr (Days)					
= P.Battens & N.Simmons (Nights)					
Specialist = C.Rowand (Wireline) R.Blok (TCP)					
<div> <div>RUN 1</div> <div> <div>SERVICE ORDER #:</div> <div>PROGRAM VERSION:</div> <div>FLUID LEVEL:</div> </div> <div> <div>L0501G207</div> <div>15C0-309</div> <div>0 m</div> </div> </div>			<div> <div>RUN 2</div> <div> <div>SERVICE ORDER #:</div> <div>PROGRAM VERSION:</div> <div>FLUID LEVEL:</div> </div> </div>		
LOGGED INTERVAL	START	STOP	LOGGED INTERVAL	START	STOP

EQUIPMENT DESCRIPTION

RUN 1

RUN 2

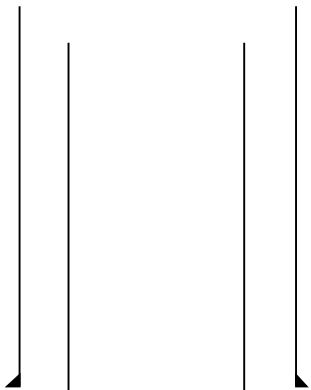
SURFACE EQUIPMENT							
WITM (SHM)							
DOWNHOLE EQUIPMENT							
PEH-A							
PEH-A 1			17.90				
AH-64							
AH-64 9802			17.35				
PGGT-D							
PGGC 227		Gamma Ray	1.07	16.95			
PGGH-D 227		Casing Co Tension	TOOL ZERO				
AH-283			15.16				
AH-CPST-AA							
AH-CPST-AA 495			14.86				
AH-MXAR							
AH-MXAR			12.37				



SHM_GUN
GUN-4-1/2" HSD Gun

6.63

TOOL BOTTOM

MAXIMUM STRING DIAMETER 5.75 IN
MEASUREMENTS RELATIVE TO TOOL ZERO
ALL LENGTHS IN METERS

Production String	(in)		(ft)	Well Schematic	(ft)	(in)		Casing String
	OD	ID	MD		MD	OD	ID	
					12.0	10.750	7.000	Casing String Casing String, 26.0 lbm/ft
					552.0	10.750		Casing Shoe

	2991.0	PBDT
	3031.57.000	Casing Shoe



MXAR 4-1/2" HSD Setting Record

MAXIS Field Log

PERFO2 Operational Summary Listing

Device	Status	Req Depth (M)	Obs Depth (M)	Time Used
--------	--------	----------------	----------------	-----------

```
MXAR  Used      2828.0      2828.0 Mon Jun 04 03:00:28 2007
```

Company: Esso Australia Pty Ltd.

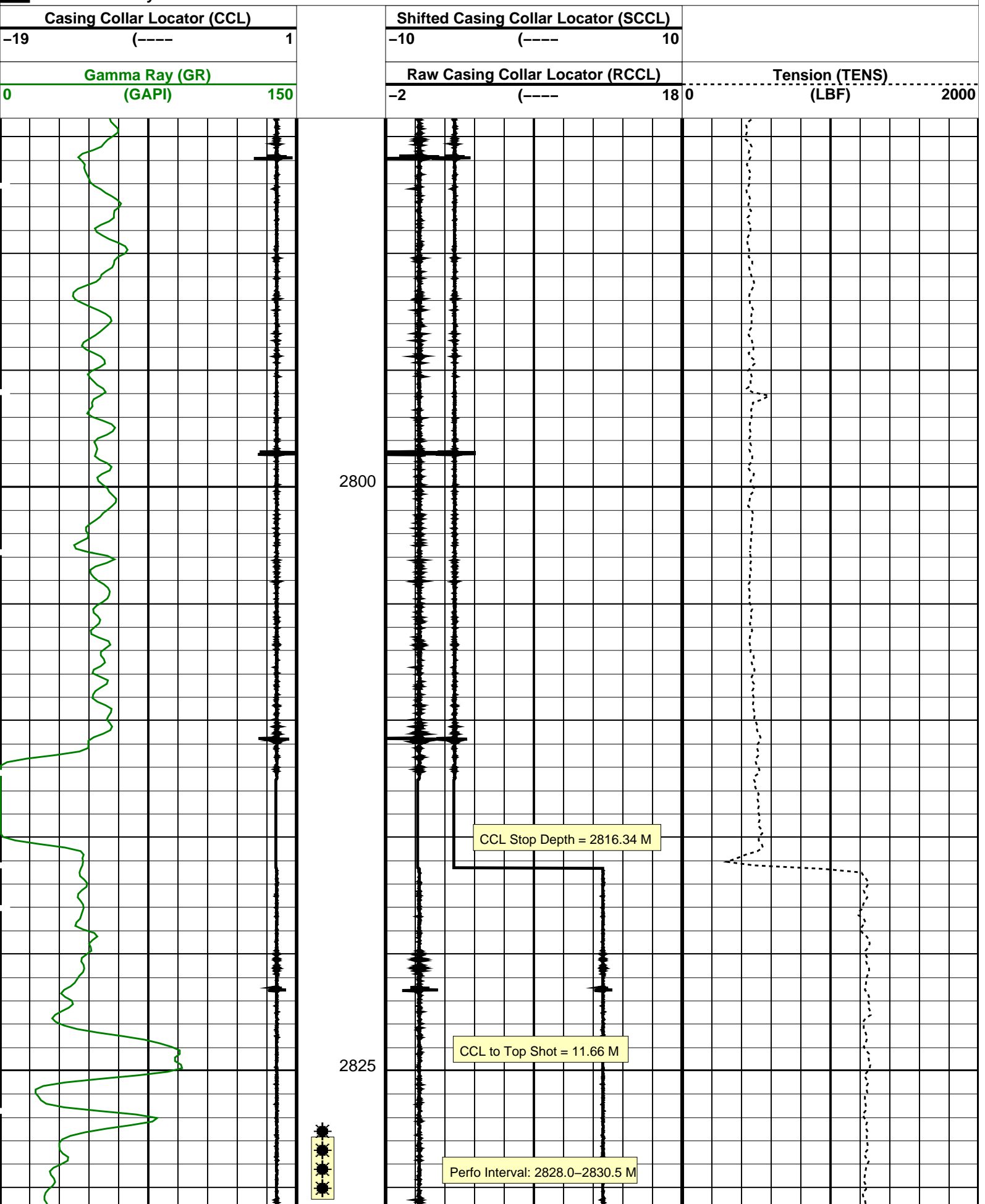
Well: HLA A7a

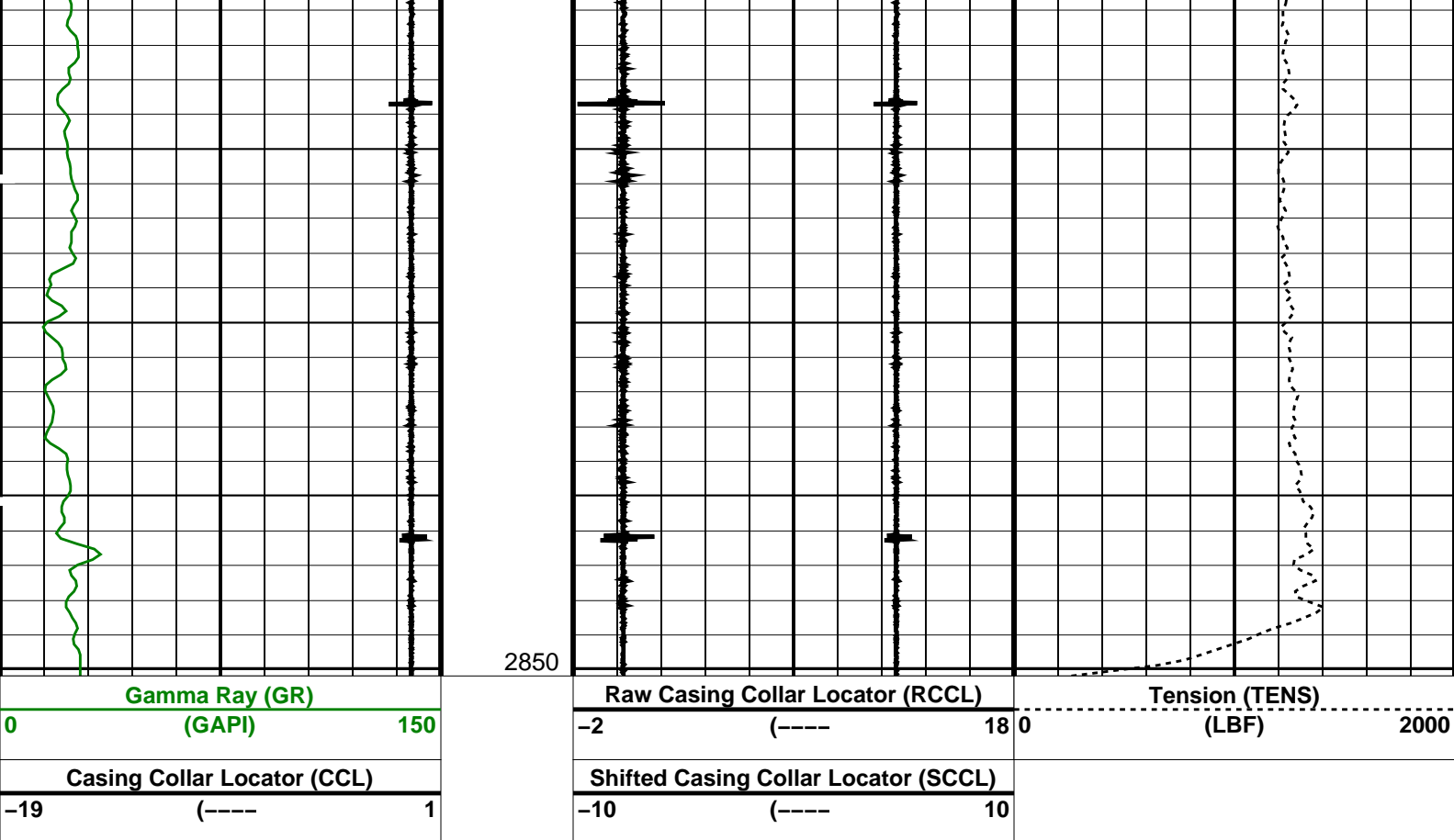
Output DLIS Files

DEFAULT	PERFO_008LUP	FN:7	PRODUCER	04-Jun-2007 02:53	2850.2 M	2784.2 M
---------	--------------	------	----------	-------------------	----------	----------

OP System Version: 15C0-309

Time Mark Every 60 S





PIP SUMMARY

Time Mark Every 60 S

Format: CORRELATION Vertical Scale: 1:200

Graphics File Created: 04-Jun-2007 02:53

OP System Version: 15C0-309
MCM

SHM_GUN 15C0-309 PGGT-D 15C0-309

Output DLIS Files

DEFAULT PERFO_008LUP FN:7 PRODUCER 04-Jun-2007 02:53

Schlumberger

MXAR 4-1/2" HSD
Correlation Log

MAXIS Field Log

Company: Esso Australia Pty Ltd.

Well: HLA A7a

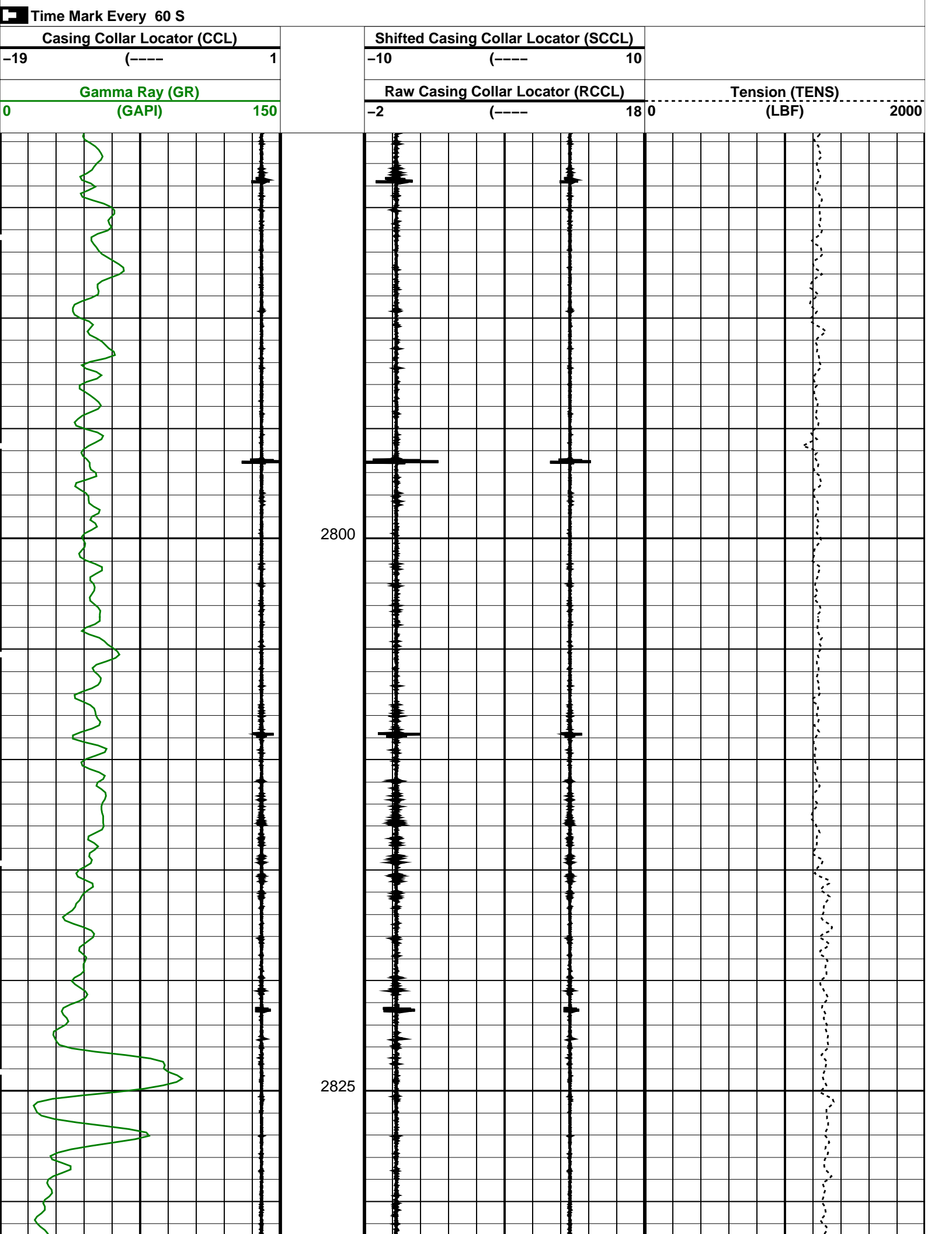
Output DLIS Files

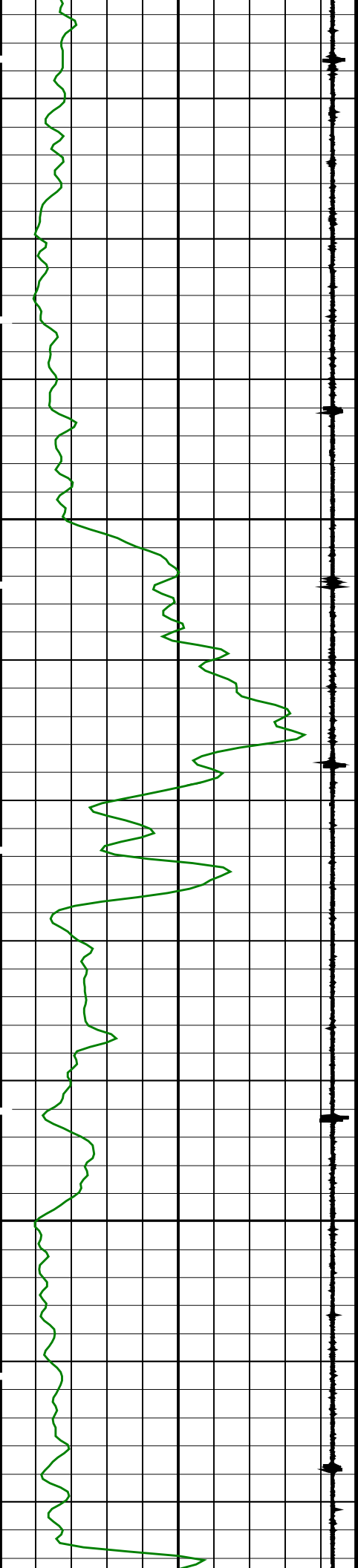
DEFAULT PERFO_006LUP FN:5 PRODUCER 04-Jun-2007 02:26

OP System Version: 15C0-309
MCM

SHM_GUN 15C0-309 PGGT-D 15C0-309

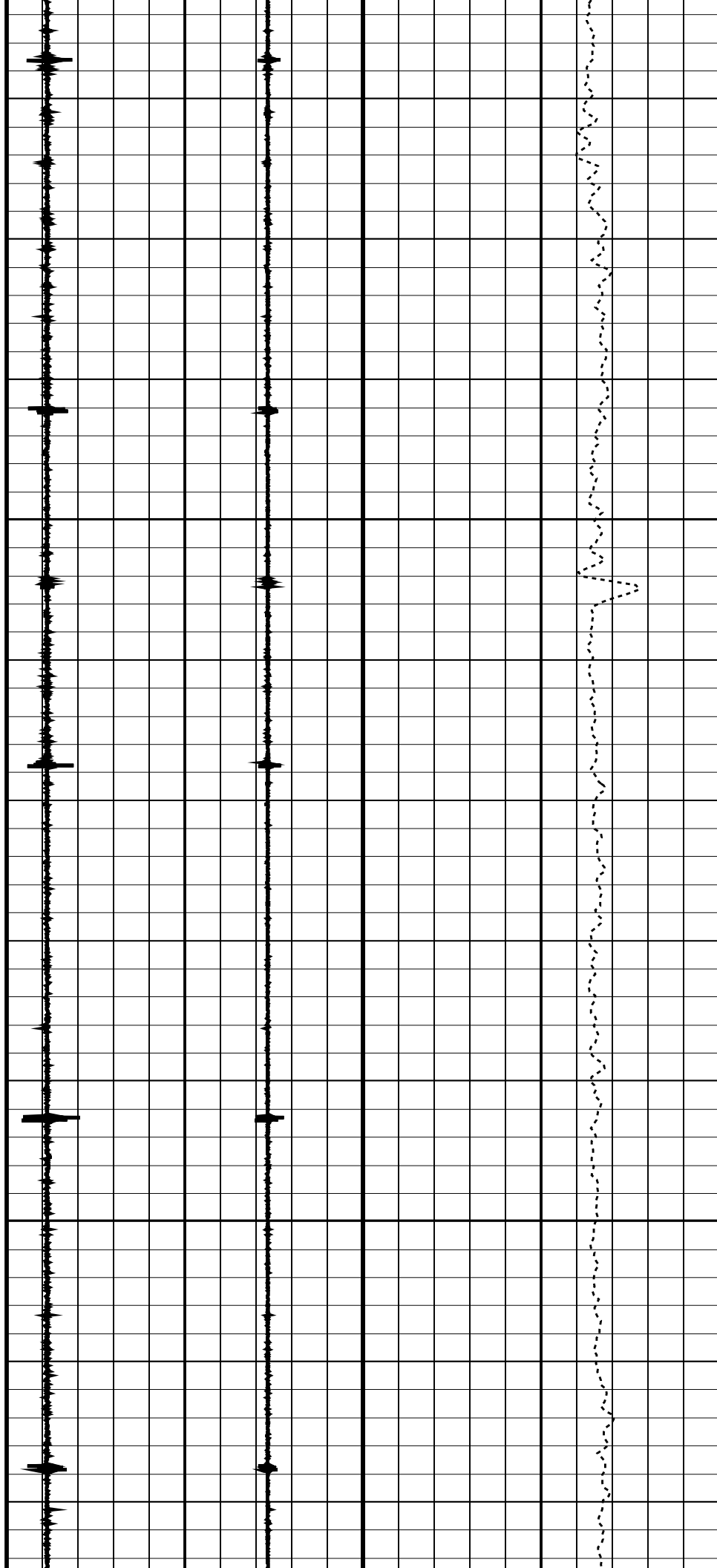
PIP SUMMARY

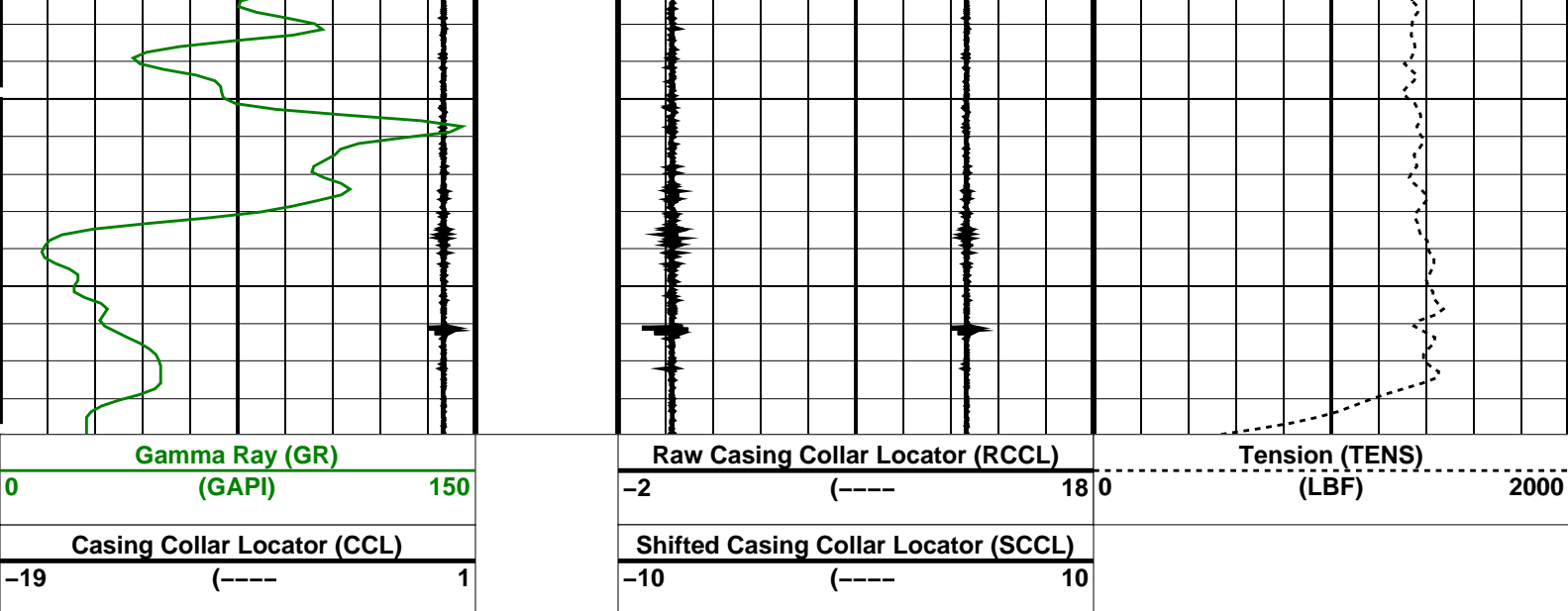




2850

2875





PIP SUMMARY

Time Mark Every 60 S

Format: CORRELATION Vertical Scale: 1:200

Graphics File Created: 04-Jun-2007 02:26

OP System Version: 15C0-309

MCM

SHM_GUN

15C0-309

PGGT-D

15C0-309

Output DLIS Files

DEFAULT

PERFO_006LUP

FN:5

PRODUCER

04-Jun-2007 02:26

Company: **Esso Australia Pty Ltd.**

Schlumberger

Well: **HLA A7a**

Field: **Halibut**

Rig: **453**

Country: **Australia**

MXAR Gun Hanger 4-1/2" HSD

Setting Record

4-Jun-2007