

Company: Esso Australia Pty Ltd.

Well: A-20

Field: Cobia

Rig: Crane / Prod 4

Country: Australia

Gamma Ray  
Survey

Rig: Cobia

Field: Cobia

Location: Gippsland

Well: A-20

Company: Esso Australia Pty Ltd.

LOCATION			
Gippsland Basin Bass Strait	Elev.:		K.B. 32.4 m
			G.L. -79 m
			D.F. 32.3 m
Permanent Datum:		MSL.	Elev.: 0 m
Log Measured From:		DF.	32.3 m above Perm. Datum
Drilling Measured From:		DF.	
State: Victoria	Max. Well Deviation 29 deg		Longitude 148°18'28.5"E
			Latitude 038°27'03.1"S

Logging Date	10-May-2007		
Run Number	One		
Depth Driller	2591 m		
Schlumberger Depth	2590 m		
Bottom Log Interval	2590 m		
Top Log Interval	2530 m		
Casing Fluid Type	Production Fluids		
Salinity			
Density			
Fluid Level	125 m		
BIT/CASING/TUBING STRING			
Bit Size	9.875 in		
From			
To			
Casing/Tubing Size	7.625 in		
Weight	26.4 lbm/ft		
Grade	N-80		
From	12.7 m		
To	2638 m		
Maximum Recorded Temperatures	227 degF		
Logger On Bottom	10-May-2007	Time	14:44
Unit Number	889	Location	Ausl / Prod 4
Recorded By	S Gilbert		
Witnessed By	G Rimmer		

PVT DATA				Run 1
Oil Density				
Water Salinity				
Gas Gravity				
Bo				
Bw				
1/Bg				
Bubble Point Pressure				
Bubble Point Temperature				
Solution GOR				
Maximum Deviation	29 deg			
CEMENTING DATA				
Primary/Squeeze			Primary	
Casing String No				
Lead Cement Type				
Volume				
Density				
Water Loss				
Additives				
Tail Cement Type				
Volume				
Density				
Water Loss				
Additives				
Expected Cement Top				
Logging Date				
Run Number				
Depth Driller				
Schlumberger Depth				
Bottom Log Interval				
Top Log Interval				
Casing Fluid Type				
Salinity				
Density				
Fluid Level				
BIT/CASING/TUBING STRING				
Bit Size				
From				
To				
Casing/Tubing Size				
Weight				
Grade				
From				
To				
Maximum Recorded Temperatures				
Logger On Bottom		Time		
Unit Number		Location		
Recorded By				
Witnessed By				

## DEPTH SUMMARY LISTING

Date Created: 5-MAY-2007 7:45:09

### Depth System Equipment

Depth Measuring Device	Tension Device	Logging Cable
Type: IDW-BE Serial Number: 6373 Calibration Date: 05-Jul-2006 Calibrator Serial Number: 9 Calibration Cable Type: 2-32ZT Wheel Correction 1: -2 Wheel Correction 2: -4	Type: PSDS/OSDS Serial Number: 325357 Calibration Date: 26-Apr-2007 Calibrator Serial Number: 1174 Calibration Gain: 0.91 Calibration Offset: 217.00	Type: 2-32ZT Serial Number: 24425 Length: 6590.08 M Conveyance Method: Wireline Rig Type: Rigless

### Depth Control Parameters

Log Sequence:	Subsequent Log In the Well
Reference Log Name:	Solar Composite Correlation
Reference Log Run Number:	1
Reference Log Date:	

### Depth Control Remarks

1. IDW used as primary depth control.
2. Z chart as secondary back-up.
3.
4.
5.
6.

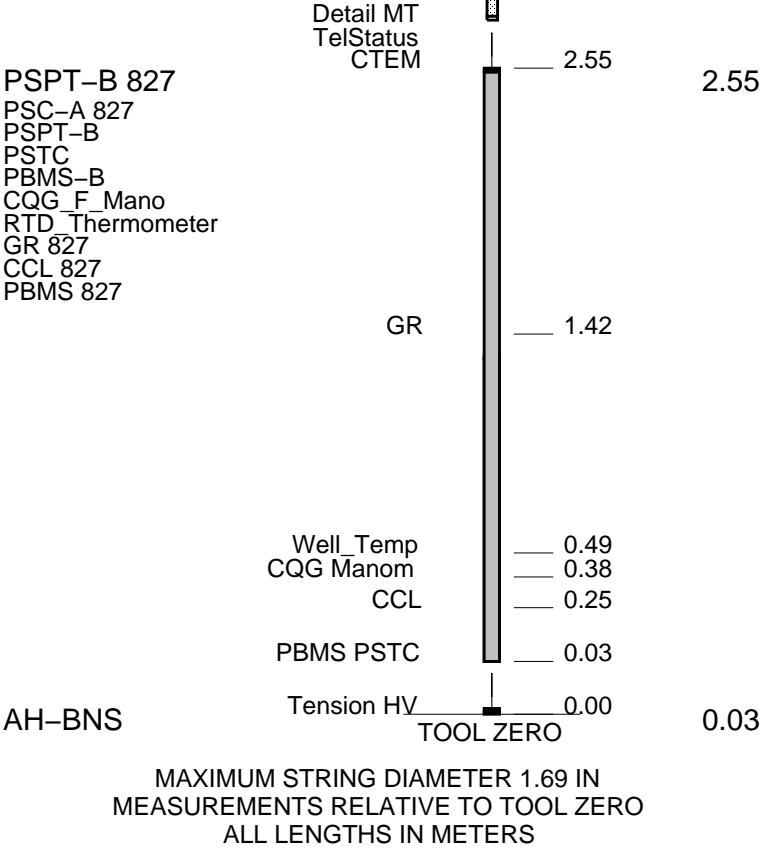
#### DISCLAIMER

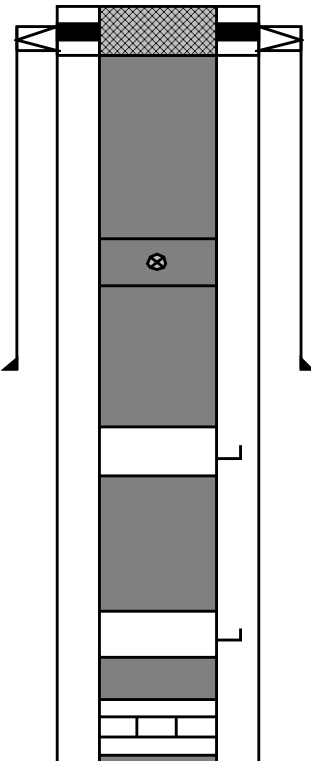
THE USE OF AND RELIANCE UPON THIS RECORDED-DATA BY THE HEREIN NAMED COMPANY (AND ANY OF ITS AFFILIATES, PARTNERS, REPRESENTATIVES, AGENTS, CONSULTANTS AND EMPLOYEES) IS SUBJECT TO THE TERMS AND CONDITIONS AGREED UPON BETWEEN SCHLUMBERGER AND THE COMPANY, INCLUDING: (a) RESTRICTIONS ON USE OF THE RECORDED-DATA; (b) DISCLAIMERS AND WAIVERS OF WARRANTIES AND REPRESENTATIONS REGARDING COMPANY'S USE OF AND RELIANCE UPON THE RECORDED-DATA; AND (c) CUSTOMER'S FULL AND SOLE RESPONSIBILITY FOR ANY INFERENCE DRAWN OR DECISION MADE IN CONNECTION WITH THE USE OF THIS RECORDED-DATA.

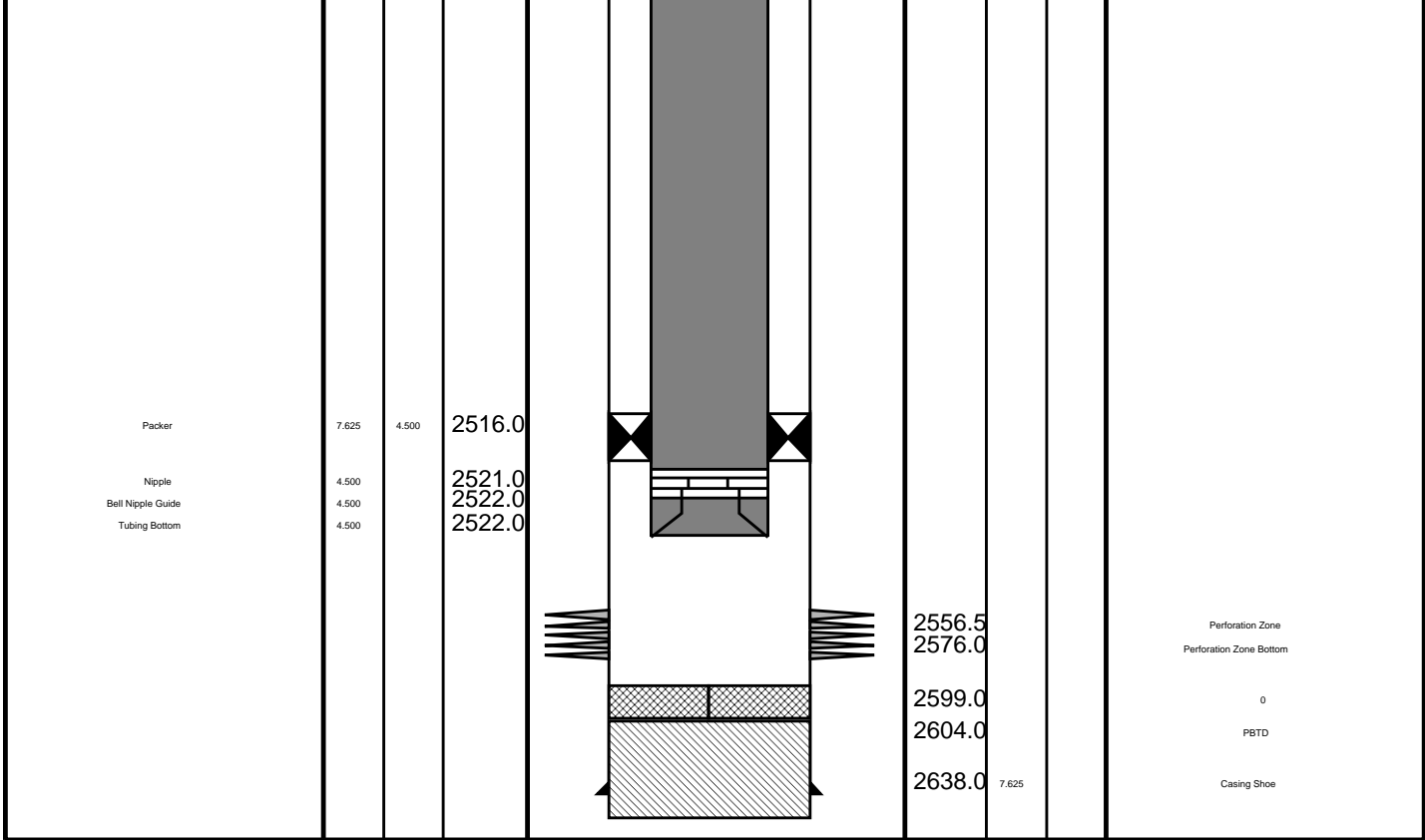
OTHER SERVICES1
OS1: None
OS2:
OS3:
OS4:
OS5:

REMARKS: RUN NUMBER 1
Log Correlated to Solar composite log provided by client .
Objective: Conduct Gamma Ray survey with well shut in
from HUD to 2530m MDKB .
Maximum Well Deviation : 29 deg @840m MDKB.
Well is a Water injection well and has No Surface Pressure
SRHP: 2288 psia

SBHT: 190 degf					
HUD: 2590m MDKB					
Crew : J Annear , J Light					
RUN 1					
SERVICE ORDER #:			AUSL07336269		
PROGRAM VERSION:			14C0-302		
FLUID LEVEL:			125 m		
LOGGED INTERVAL	START	STOP	LOGGED INTERVAL	START	STOP
EQUIPMENT DESCRIPTION					
RUN 1			RUN 2		
SURFACE EQUIPMENT					
WITM-A 827					
PSC_16MHZ 827					
DOWNHOLE EQUIPMENT					
AH-SWBS-B 761			5.62		
AH-SWBS-B 761					
AH-SWBS-B 762			4.93		
AH-SWBS-B 762					
AH-SWBS-B 76			4.25		
AH-SWBS-B 763					
AH-SWBS-B 731			3.56		
AH-SWBS-B 731					
MH-SWHS-A 726			2.88		
MH-SWHS-A 726					



Production String	(m)		MD	Well Schematic	(m)			Casing String
	OD	ID			MD	OD	ID	
Tubing Hanger	7.625	4.500	11.8		12.7	10.750		Casing String
Tubing	4.500		11.9		12.7	7.625		Casing String
					12.7	10.750	7.625	Liner Hanger
Shutin Valve	4.500		459.0					
					602.0	10.750		Casing Shoe
Gas Lift Mandrel	4.500		988.0					
Gas Lift Mandrel	4.500		1325.0					
Nipple	4.500		1339.0					



Job Events Summary

MAXIS Field Log

Schlumberger Job Event Summary

Time	Elapsed Time	Depth (M)	File
Station Log	10-May-2007 13:12	000:33	0.0 - 5.0 PSP_005LTP
Log Pass (down)	10-May-2007 13:45	000:29	-2.3 - 2593.7 PSP_007LDP
Log Pass (up)	10-May-2007 14:14	000:11	2593.7 - 2499.2 PSP_008LUP

Company: Esso Australia Pty Ltd.

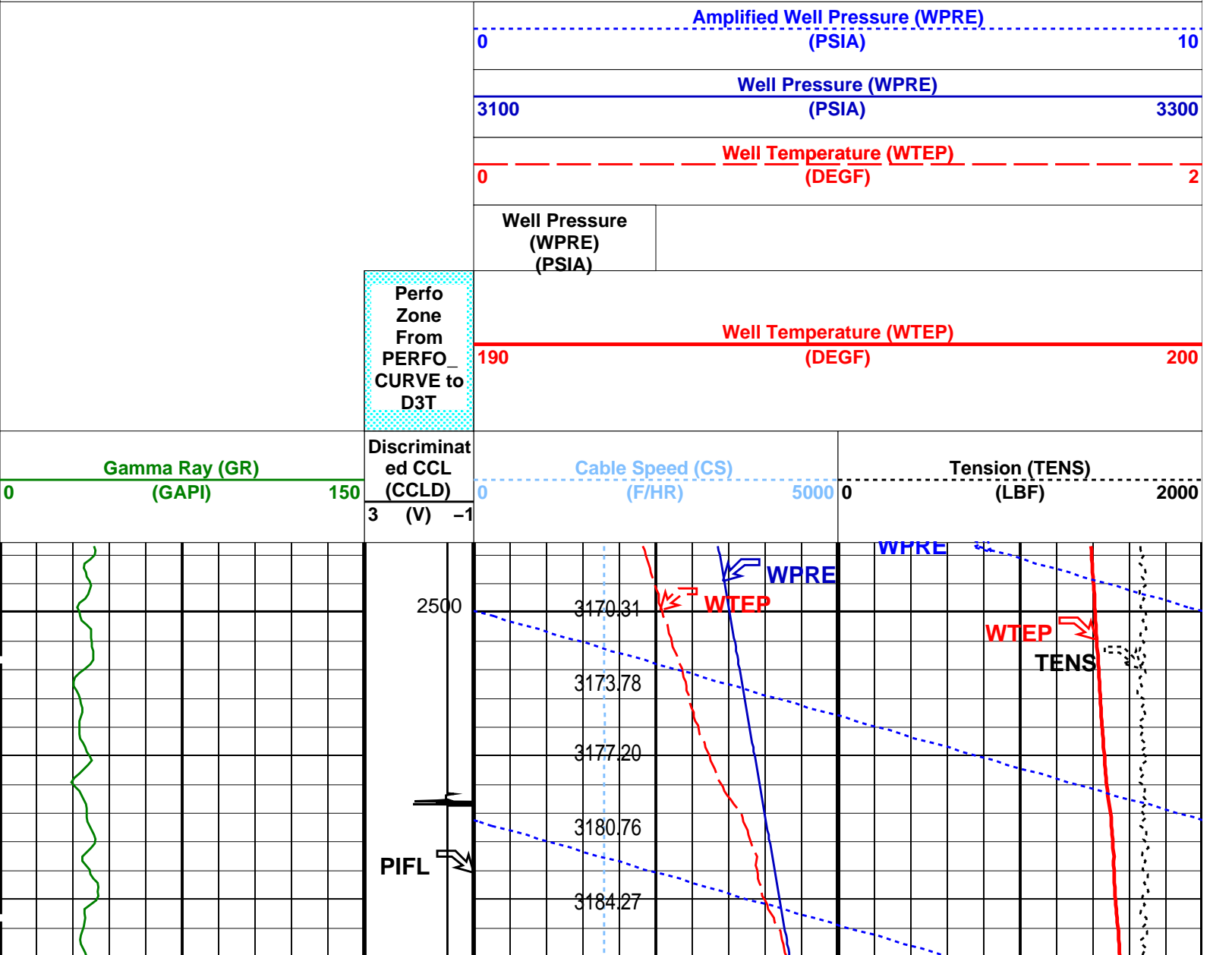
Well: A-20

Input DLIS Files					
DEFAULT	PSP_008LUP	FN:7	PRODUCER	10-May-2007 14:14	2593.7 M 2499.2 M
Output DLIS Files					
DEFAULT	PSP_012PUP	FN:11	PRODUCER	10-May-2007 14:38	2591.6 M 2497.5 M

OP System Version: 14C0-302	
MCM	
PSPT-B	14C0-302

PIP SUMMARY

Time Mark Every 60 S



PIFL

2500

3170.31

3173.78

3177.20

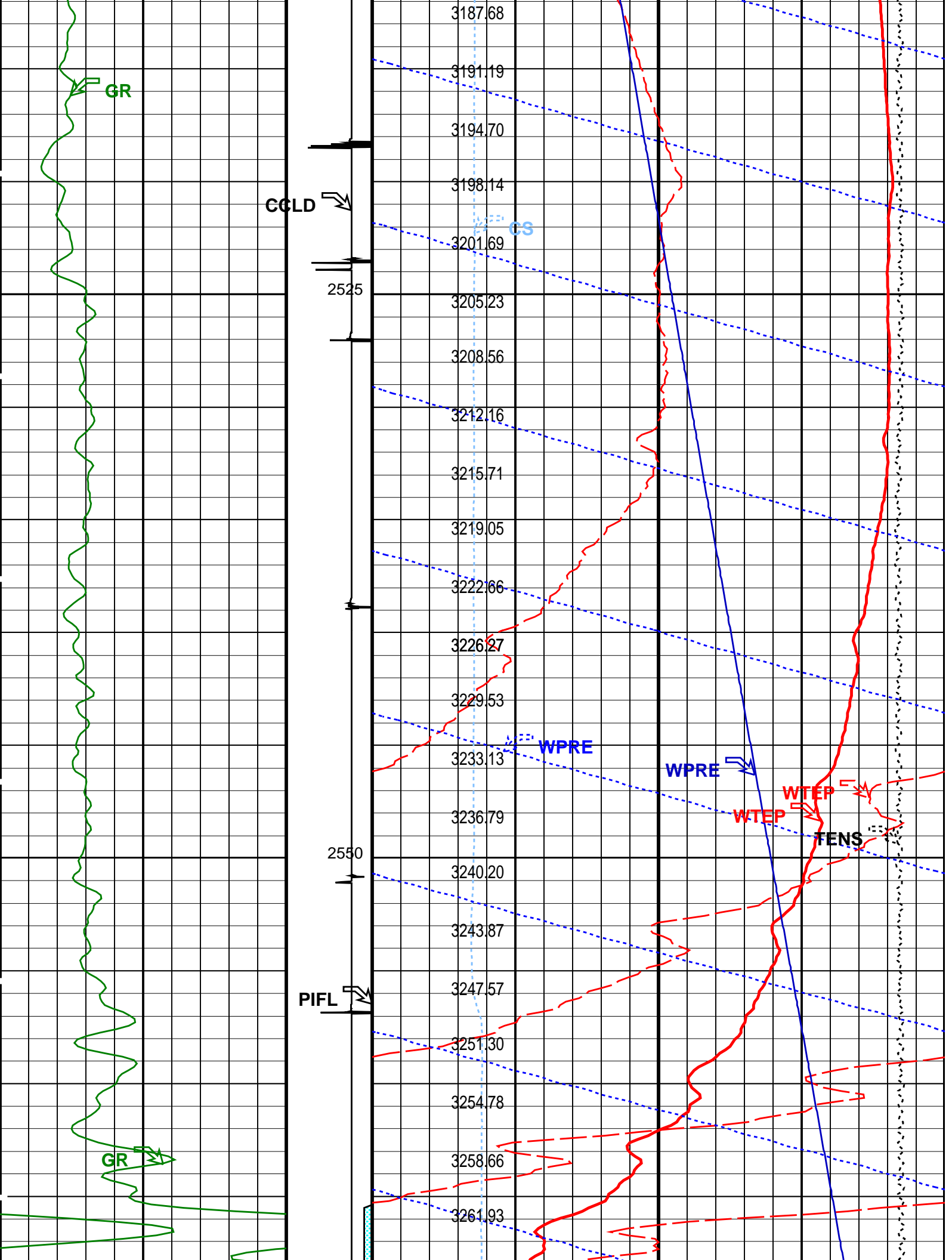
3180.76

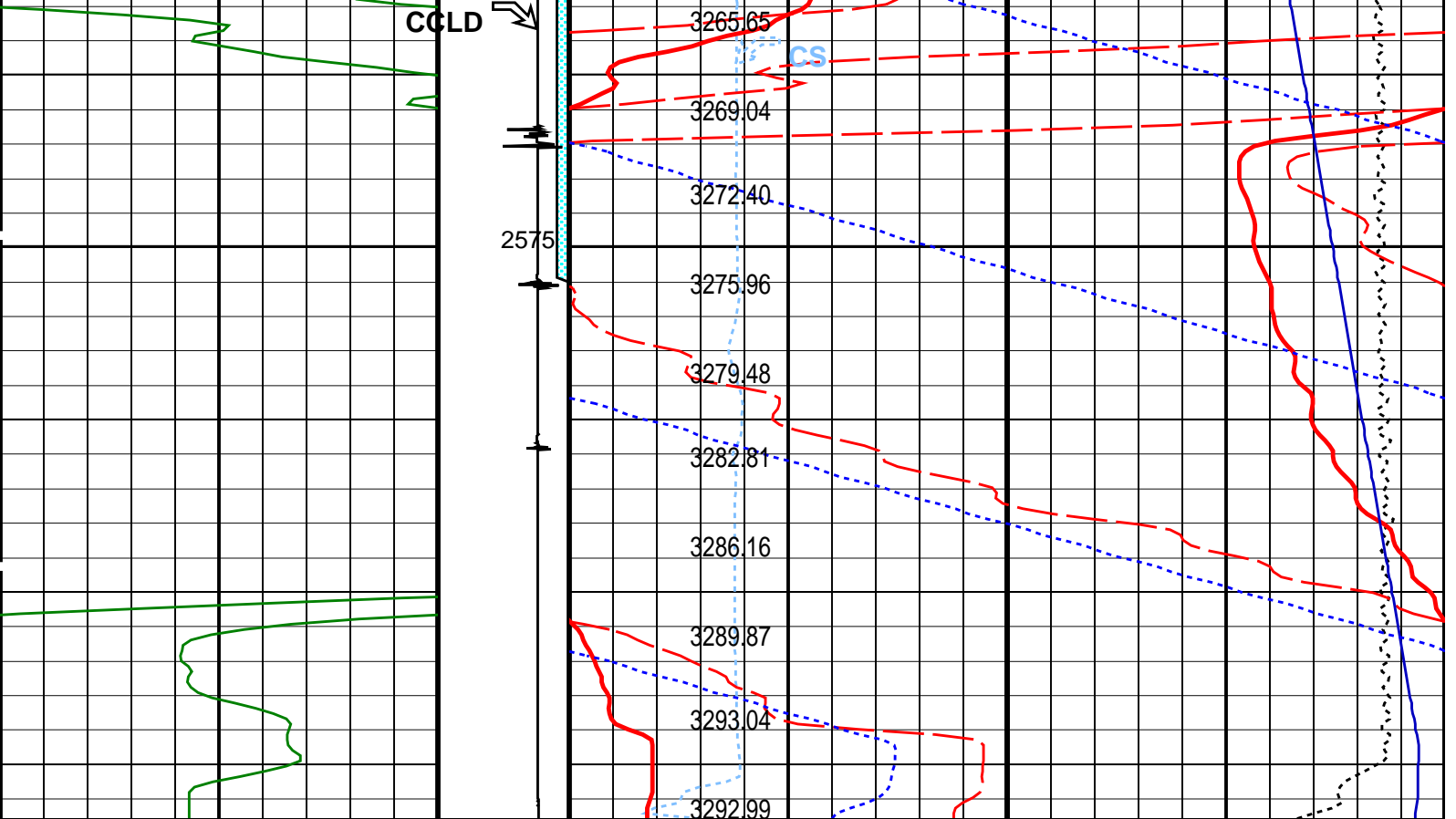
3184.27

WPRE

WTEP

TENS





Gamma Ray (GR) (GAPI)		Discriminat ed CCL (CCLD)	Cable Speed (CS) (F/HR)		Tension (TENS) (LBF)	
0 150		3 (V) -1	0 5000		0 2000	

Perfo Zone From PERFO_ CURVE to D3T	Well Temperature (WTEP) (DEGF)		190	200
	Well Pressure (WPRE) (PSIA)			
	Well Temperature (WTEP) (DEGF)		0	2
	Well Pressure (WPRE) (PSIA)		3100	3300
	Amplified Well Pressure (WPRE) (PSIA)		0	10

PIP SUMMARY

Time Mark Every 60 S

Format: PSP\_1 Vertical Scale: 1:200 Graphics File Created: 10-May-2007 14:38

OP System Version: 14C0-302  
MCM

PSPT-B 14C0-302

Parameters		
DLIS Name	Description	Value
DO	System and Miscellaneous	
PP	Depth Offset for Playback	-2.2 M
	Playback Processing	NORMAL



## Input DLIS Files

DEFAULT	PSP_008LUP	FN:7	PRODUCER	10-May-2007 14:14	2593.7 M	2499.2 M
---------	------------	------	----------	-------------------	----------	----------

## Output DLIS Files

DEFAULT	PSP_012PUP	FN:11	PRODUCER	10-May-2007 14:38
---------	------------	-------	----------	-------------------

Company: **Esso Australia Pty Ltd.**

**Schlumberger**

Well: **A-20**

Field: **Cobia**

Rig: **Cobia**

Country: **Australia**

Ramma Ray  
Survey