

Company: Esso Australia Pty Ltd.

Well: Halibut A-7

Field: Gippsland Basin

Rig: ISDL Rig 453

Country: Australia

4-7/16 Chemical Cutter
String Shot

Rig: ISDL Rig 453

Field: Gippsland Basin

Location: Bass Strait

Well: Halibut A-7

Company: Esso Australia Pty Ltd.

LOCATION

Bass Strait

Gippsland

Basin

Elev.: K.B. 29.46 m

G.L. -72.5 m

D.F. 29.32 m

Permanent Datum: _____

Mean Sea Level _____

Log Measured From: _____

Drill Floor _____

Drilling Measured From: _____

Kelly Bushing _____

State: Victoria

Max. Well Deviation 57 deg

Longitude 148°19' 07.62"E

Latitude 38°24' 20.36"S

Logging Date			16-May-2007						
Run Number			1						
Depth Driller			3313.2 m						
Schlumberger Depth			2600 m						
Bottom Log Interval			2582 m						
Top Log Interval			2585 m						
Casing Fluid Type			Inhibited Sea Water						
Salinity									
Density			8.55 lbm/gal						
Fluid Level									
BIT/CASING/TUBING STRING									
Bit Size			8.000 in						
From			552.2 m						
To			3313.2 m						
Casing/Tubing Size			5.500 in						
Weight			26.4 lbm/ft						
Grade			J-55						
From			11 m						
To			2959.4 m						
Maximum Recorded Temperatures									
Logger On Bottom		Time	16-May-2007		13:05				
Unit Number		Location	AUSL						
Recorded By			Alex Sword						
Witnessed By			Mr.T.Bassett/Mr.R.Spence						

PVT DATA				Run 1	Run 2	Run
Oil Density						
Water Salinity						
Gas Gravity						
Bo						
Bw						
1/Bg						
Bubble Point Pressure						
Bubble Point Temperature						
Solution GOR						
Maximum Deviation				57 deg		
CEMENTING DATA						
Primary/Squeeze				Primary		
Casing String No						
Lead Cement Type						
Volume						
Density						
Water Loss						
Additives						
Tail Cement Type						
Volume						
Density						
Water Loss						
Additives						
Expected Cement Top						
Logging Date						
Run Number						
Depth Driller						
Schlumberger Depth						
Bottom Log Interval						
Top Log Interval						
Casing Fluid Type						
Salinity						
Density						
Fluid Level						
BIT/CASING/TUBING STRING						
Bit Size						
From						
To						
Casing/Tubing Size						
Weight						
Grade						
From						
To						
Maximum Recorded Temperatures						
Logger On Bottom		Time				
Unit Number		Location				
Recorded By						
Witnessed By						

DEPTH SUMMARY LISTING

Date Created: 18-MAY-2007 14:45:25

Depth System Equipment

Depth Measuring Device		Tension Device		Logging Cable	
Type:	IDW-H	Type:	CMTD-B/A	Type:	7-46P
Serial Number:	796	Serial Number:	1721	Serial Number:	76075
Calibration Date:	06-Sep-2007	Calibration Date:	11-May-07	Length:	7315.20 M
Calibrator Serial Number:	1009	Calibrator Serial Number:	1051	Conveyance Method:	Wireline
Calibration Cable Type:	7-46V-XS	Calibration Gain:	0.82	Rig Type:	Offshore_Fixed
Wheel Correction 1:	-3	Calibration Offset:	-796.00		
Wheel Correction 2:	-2				

Depth Control Parameters

Log Sequence:	Subsequent Log In the Well
Reference Log Name:	Tubing Tally
Reference Log Run Number:	
Reference Log Date:	01-May-2007

Depth Control Remarks

1. IDW used as primary depth reference
2. Z-Chart used as Secondary Depth Reference
- 3.
- 4.
- 5.
- 6.

DISCLAIMER

THE USE OF AND RELIANCE UPON THIS RECORDED-DATA BY THE HEREIN NAMED COMPANY (AND ANY OF ITS AFFILIATES, PARTNERS, REPRESENTATIVES, AGENTS, CONSULTANTS AND EMPLOYEES) IS SUBJECT TO THE TERMS AND CONDITIONS AGREED UPON BETWEEN SCHLUMBERGER AND THE COMPANY, INCLUDING: (a) RESTRICTIONS ON USE OF THE RECORDED-DATA; (b) DISCLAIMERS AND WAIVERS OF WARRANTIES AND REPRESENTATIONS REGARDING COMPANY'S USE OF AND RELIANCE UPON THE RECORDED-DATA; AND (c) CUSTOMER'S FULL AND SOLE RESPONSIBILITY FOR ANY INFERENCE DRAWN OR DECISION MADE IN CONNECTION WITH THE USE OF THIS RECORDED-DATA.

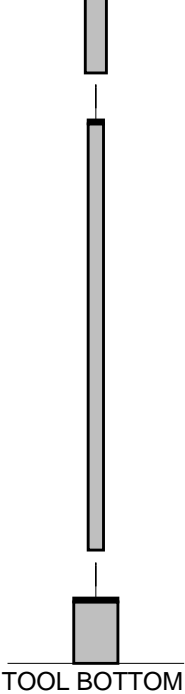
OTHER SERVICES1 OS1: 4.5" Drift Run OS2: OS3: OS4: OS5:	OTHER SERVICES2 OS1: OS2: OS3: OS4: OS5:
REMARKS: RUN NUMBER 1	REMARKS: RUN NUMBER 2
All logs correlated to tubing tally dated: 1–May–07	
Pupose of the program is to cut tubing at around 2600mMDKB.	
String Shot using SAFE initiation and 2 wraps of 80Gr Primacord	
Tubing was drifted with 4.5" Drift to 2600mMDKB	
Chemical cutter is 4–7/16, SECURE initiated.	
2x2"x48" Bromine tubes were used with 14" x 9/16 Gas Grain	

No.10 Catalyst					
CCL to Top shot String Shot = 6.0m					
CCL to Severing Head = 6.3m					
Day Crew: Kevin Kerr, Nathan Simmons					
Night Crew: Gary Martin, Craige Harris					
Performed By Schlumberger					
RUN 1			RUN 2		
SERVICE ORDER #:		40000447	SERVICE ORDER #:		
PROGRAM VERSION:		15C0-309	PROGRAM VERSION:		
FLUID LEVEL:			FLUID LEVEL:		
LOGGED INTERVAL	START	STOP	LOGGED INTERVAL	START	STOP

EQUIPMENT DESCRIPTION					
RUN 1			RUN 2		
SURFACE EQUIPMENT			SURFACE EQUIPMENT		
WITM (SHM)			WITM (SHM)		
DOWNHOLE EQUIPMENT			DOWNHOLE EQUIPMENT		
<div> <div> <div>MH-22</div> <div>MH-22</div> <div>5.57</div> </div> <div> <div>AH-38</div> <div>5.09</div> </div> <div> <div>CCL-L</div> <div>CCL-L</div> <div>5.00</div> <div>Tension CCL</div> <div>___ TOOL ZERO</div> </div> <div> <div>EQF-46</div> <div>EQF-46</div> <div>4.55</div> </div> <div> <div>EQF-46</div> <div>EQF-46</div> <div>3.33</div> </div> </div>			<div> <div> <div>MH-22</div> <div>MH-22</div> <div>5.75</div> </div> <div> <div>AH-38</div> <div>5.27</div> </div> <div> <div>CCL-L</div> <div>CCL-L</div> <div>5.18</div> <div>Tension CCL</div> <div>___ TOOL ZERO</div> </div> <div> <div>EQF-46</div> <div>EQF-46</div> <div>4.72</div> </div> <div> <div>EQF-46</div> <div>EQF-46</div> <div>3.51</div> </div> </div>		

EQF-43
EQF-43

AH-Drift
AH-Drift

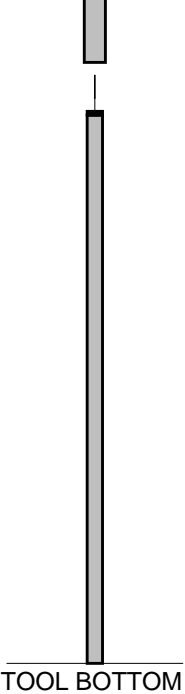


2.11

0.28

MAXIMUM STRING DIAMETER 4.50 IN
MEASUREMENTS RELATIVE TO TOOL ZERO
ALL LENGTHS IN METERS

SHM_GUN
GUN

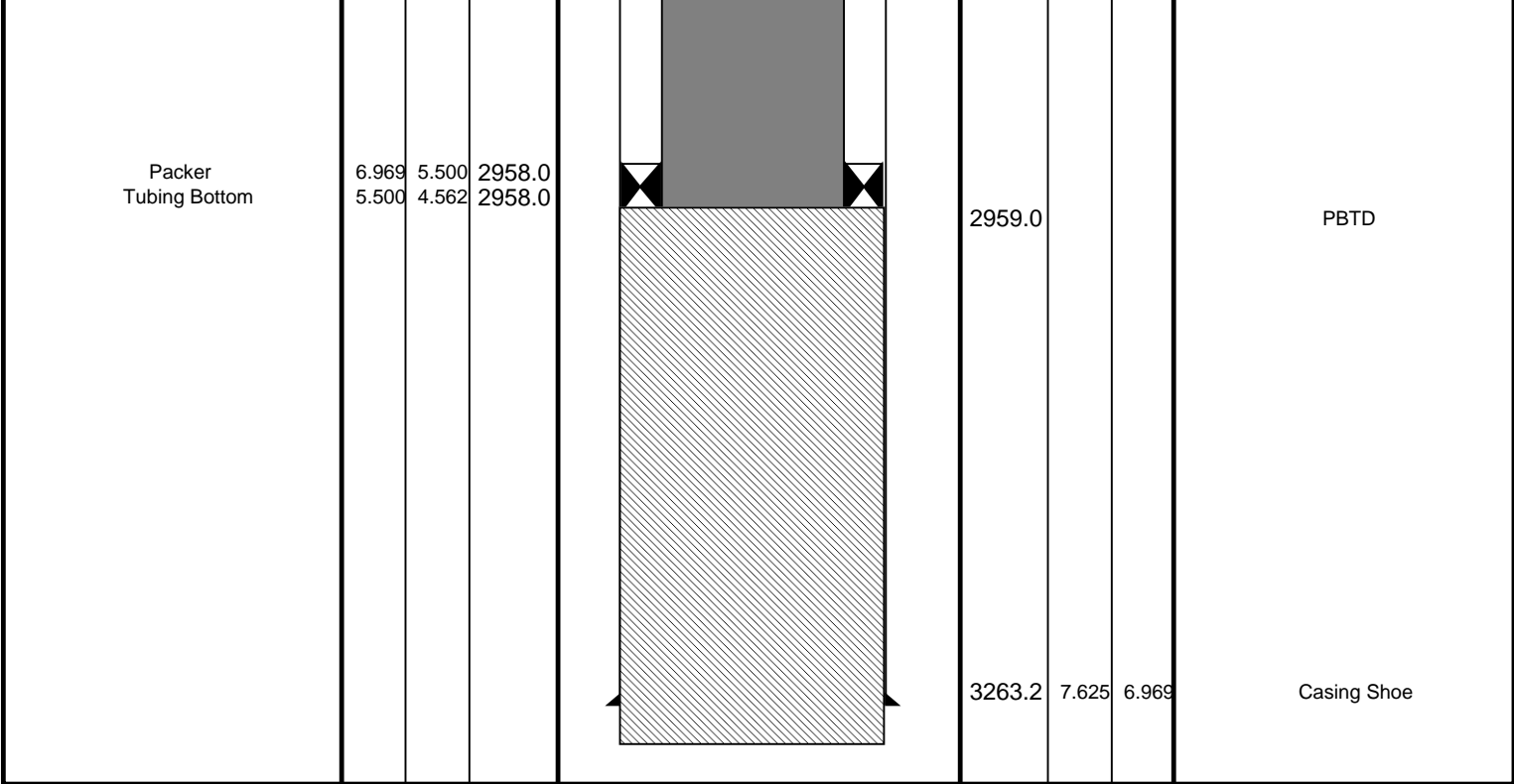


2.29

TOOL BOTTOM

MAXIMUM STRING DIAMETER 2.13 IN
MEASUREMENTS RELATIVE TO TOOL ZERO
ALL LENGTHS IN METERS

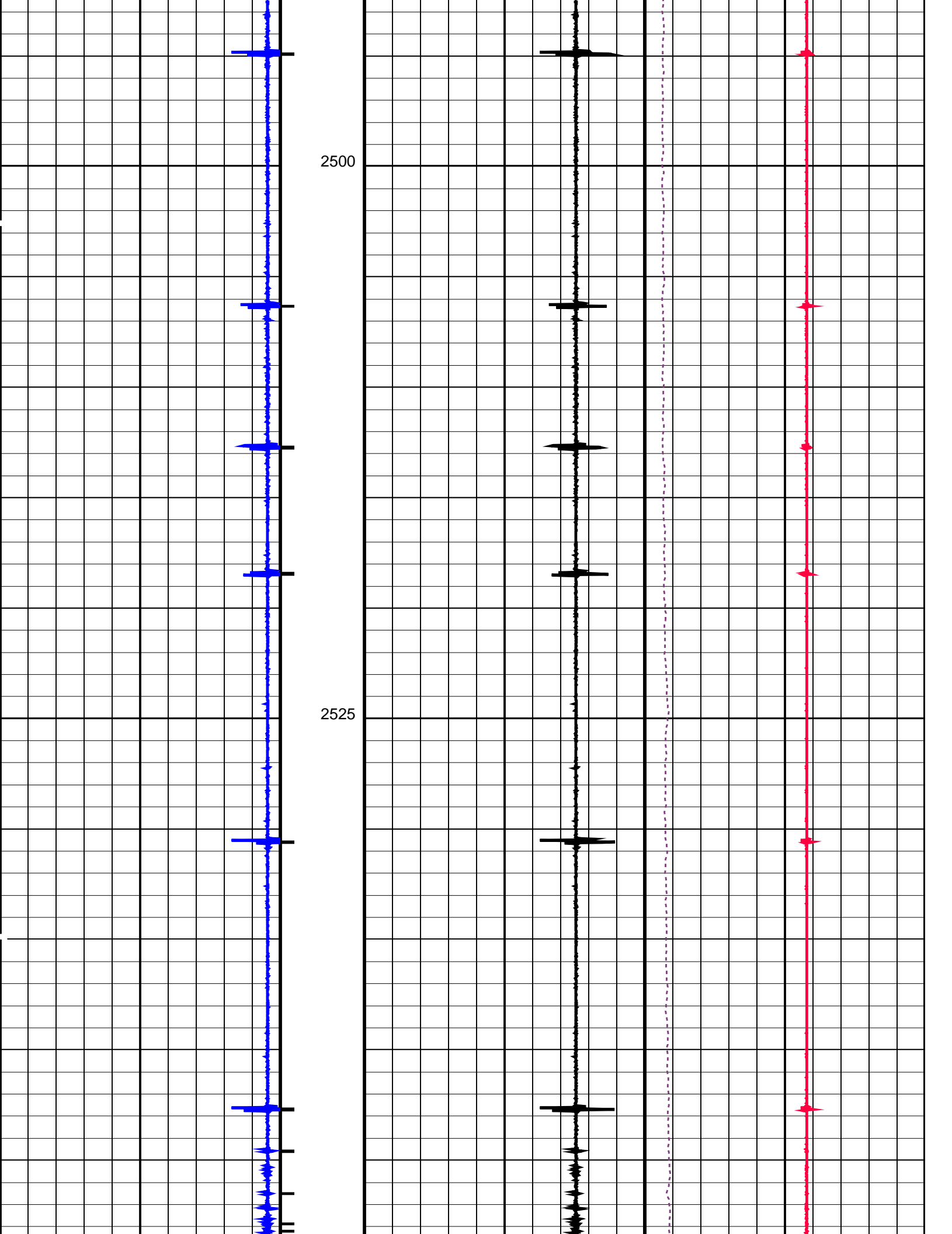
Production String	(in)		(m)	Well Schematic	(m)	(in)		Casing String
	OD	ID	MD		MD	OD	ID	
Tubing	5.500	4.562	11.3		11.9 12.3	7.625 10.750	6.969 10.050	Casing String Casing String
Shutin Valve	5.500	4.562	119.0					
Sliding Sleeve	5.500	4.562	809.0		539.8	10.750	10.050	Casing Shoe

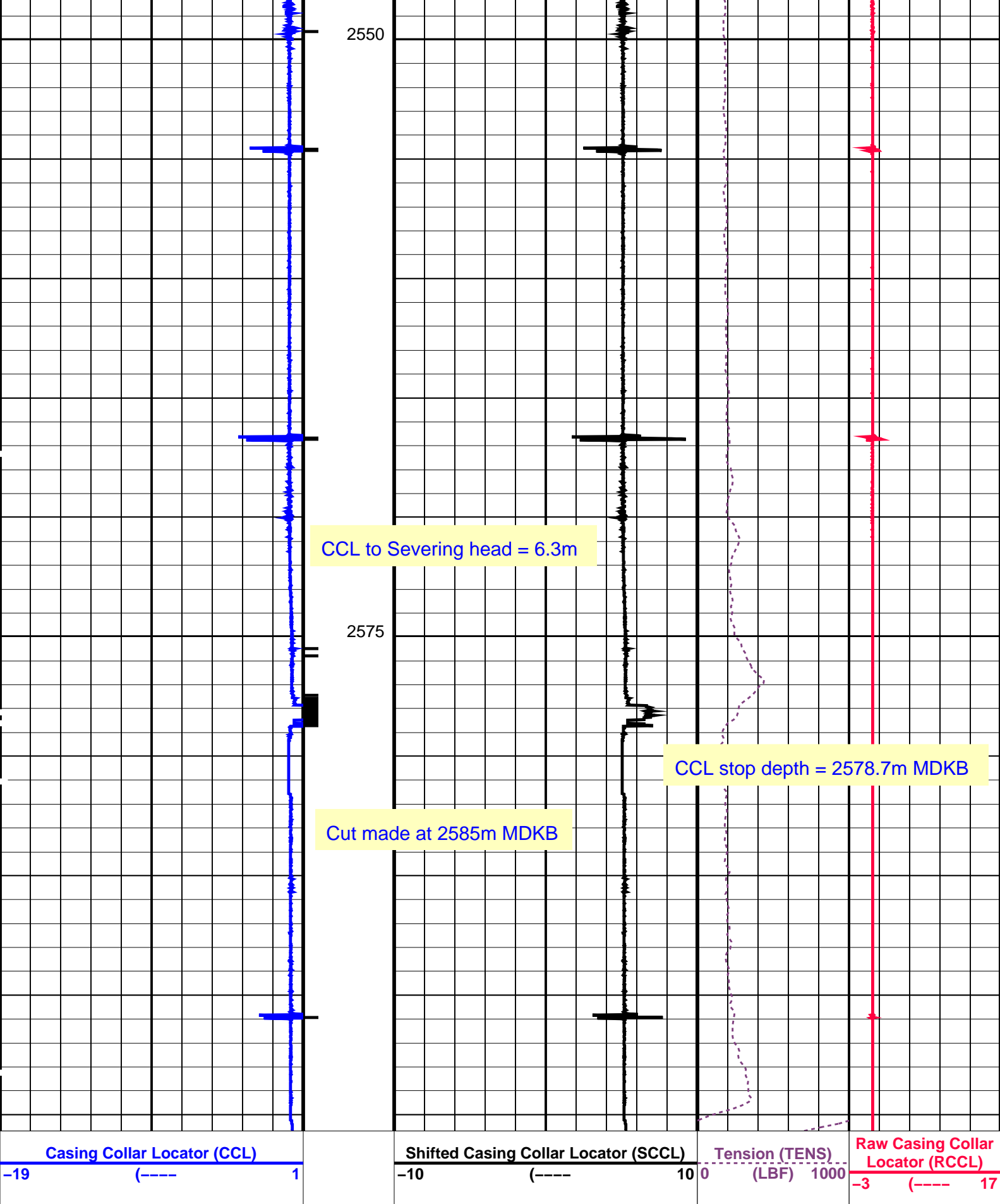


Shooting Pass 4-7/16 Chemical Cutter

MAXIS Field Log

Output DLIS Files											
DEFAULT		PERFO_023LUP		FN:22		PRODUCER		16-May-2007 19:44		2595.7 M 2491.6 M	
OP System Version: 15C0-309											
MCM											
SHM_GUN		15C0-309		CCL-L		15C0-309					
PIP SUMMARY											
└─ Casing Collars											
Time Mark Every 60 S											
Casing Collar Locator (CCL)				Shifted Casing Collar Locator (SCCL)				Tension (TENS)		Raw Casing Collar Locator (RCCL)	
-19 (---- 1				-10 (---- 10				0 (LBF) 1000		-3 (---- 17	



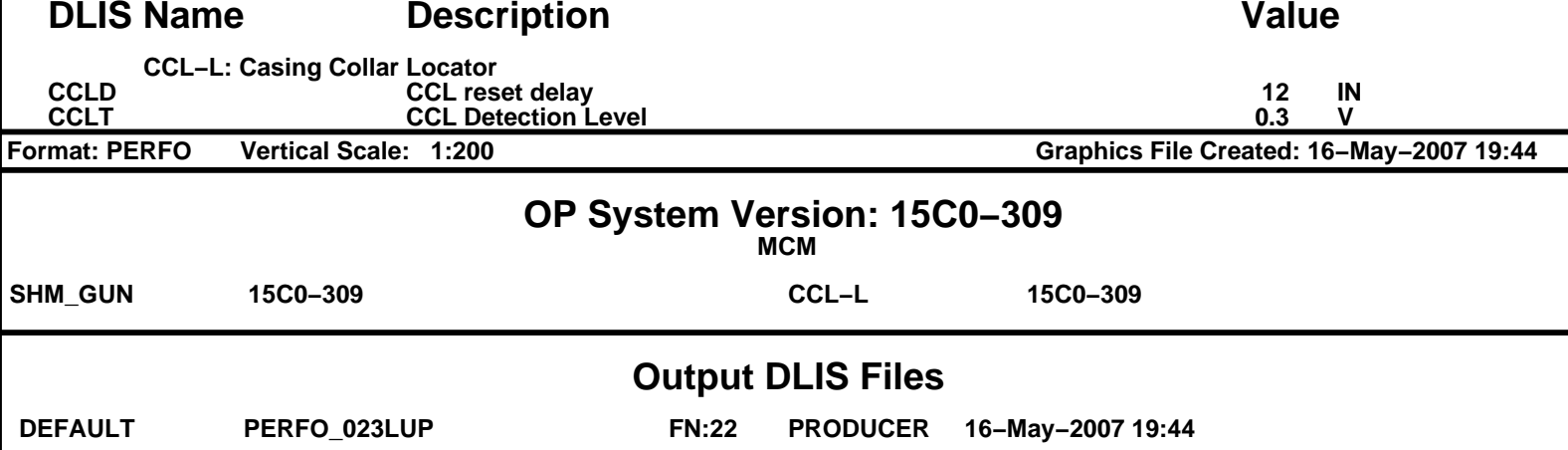


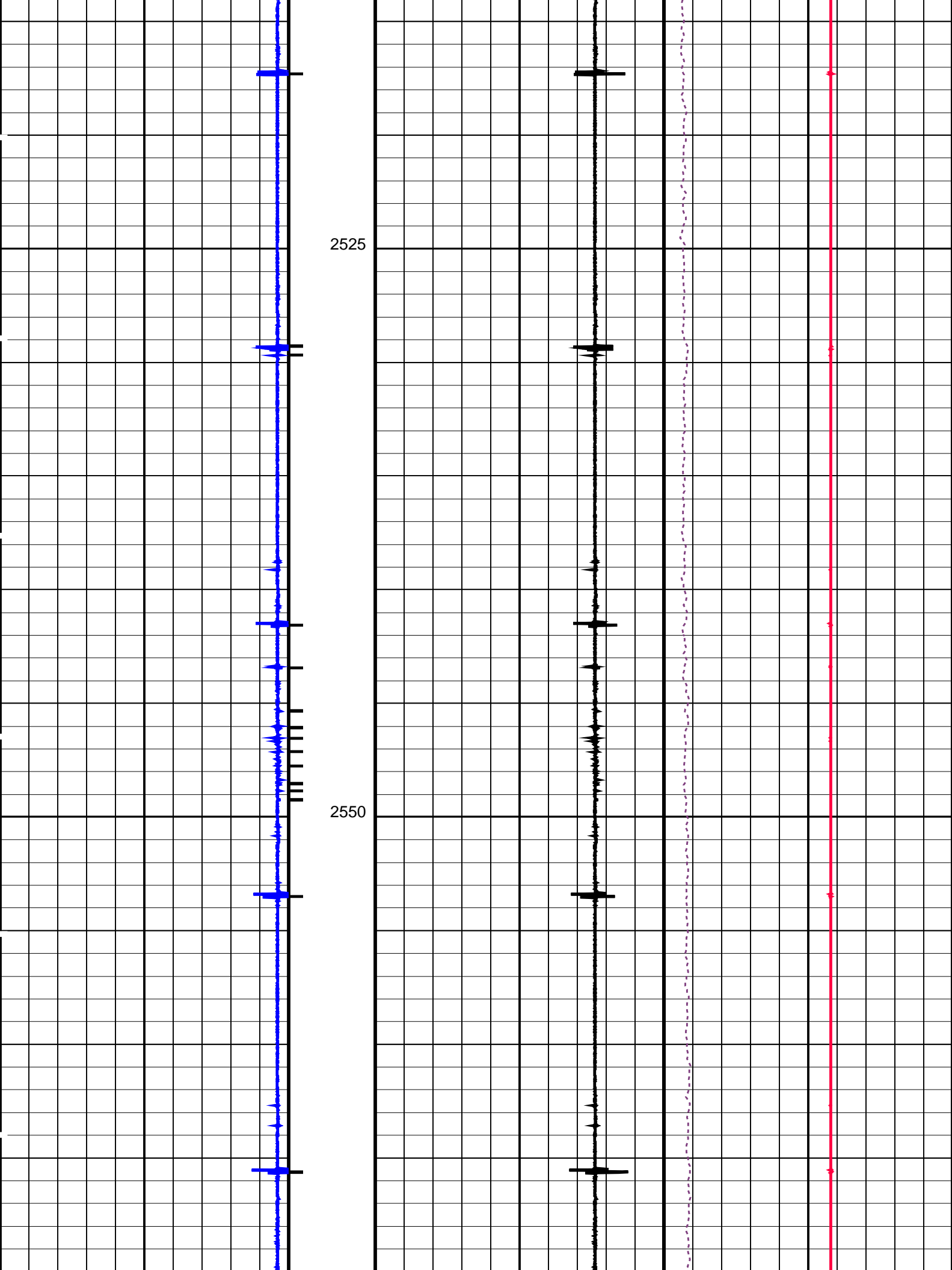
PIP SUMMARY

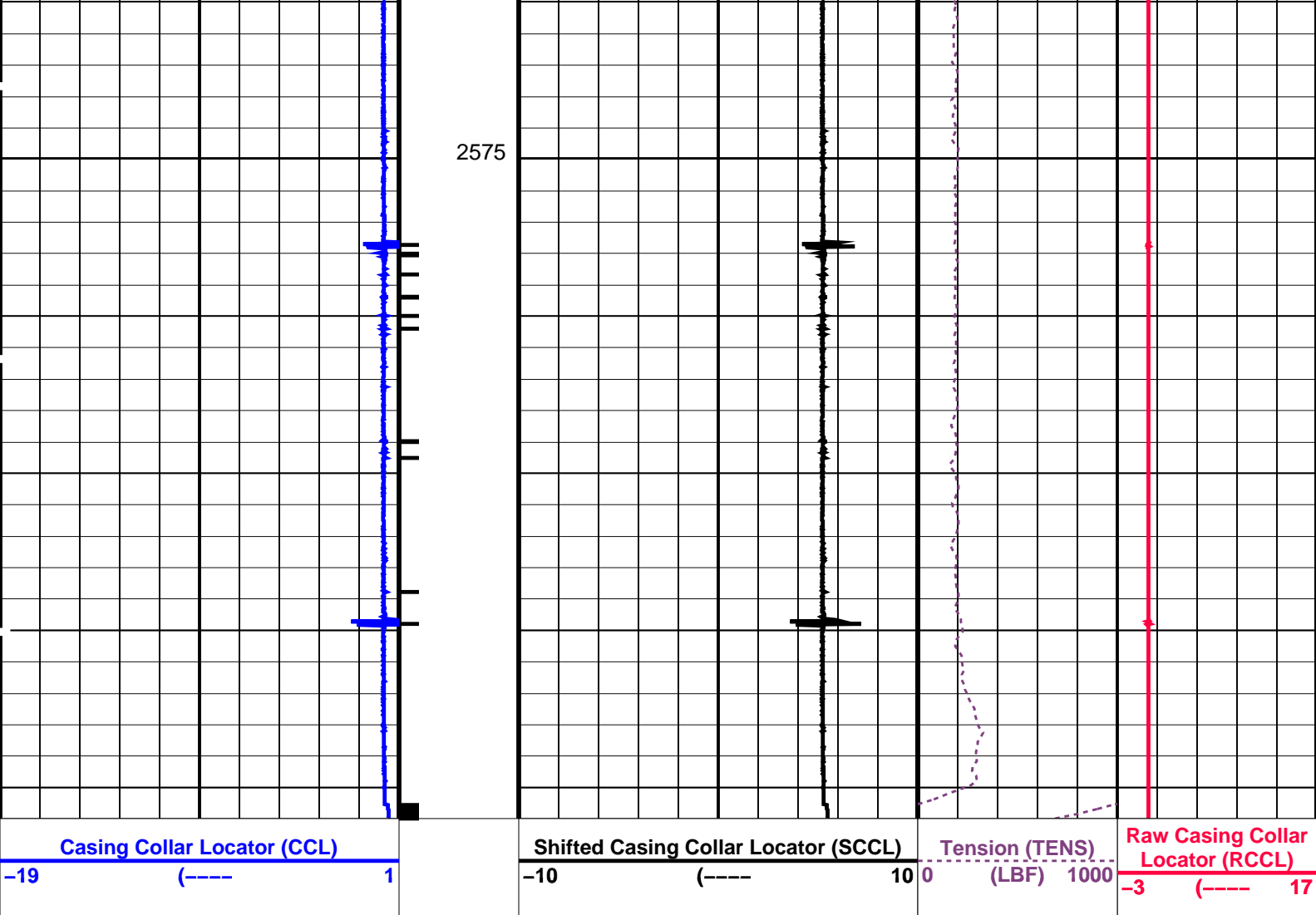
└─ Casing Collars

Time Mark Every 60 S

Parameters







PIP SUMMARY

Time Mark Every 60 S

Parameters

DLIS Name	Description	Value
CCLD	CCL-L: Casing Collar Locator	12 IN
CCLT	CCL reset delay	0.3 V
	CCL Detection Level	

Format: PERFO Vertical Scale: 1:200 Graphics File Created: 16-May-2007 19:24

OP System Version: 15C0-309
MCM

SHM_GUN 15C0-309 CCL-L 15C0-309

Output DLIS Files

DEFAULT PERFO_022LUP FN:21 PRODUCER 16-May-2007 19:24



Schlumberger

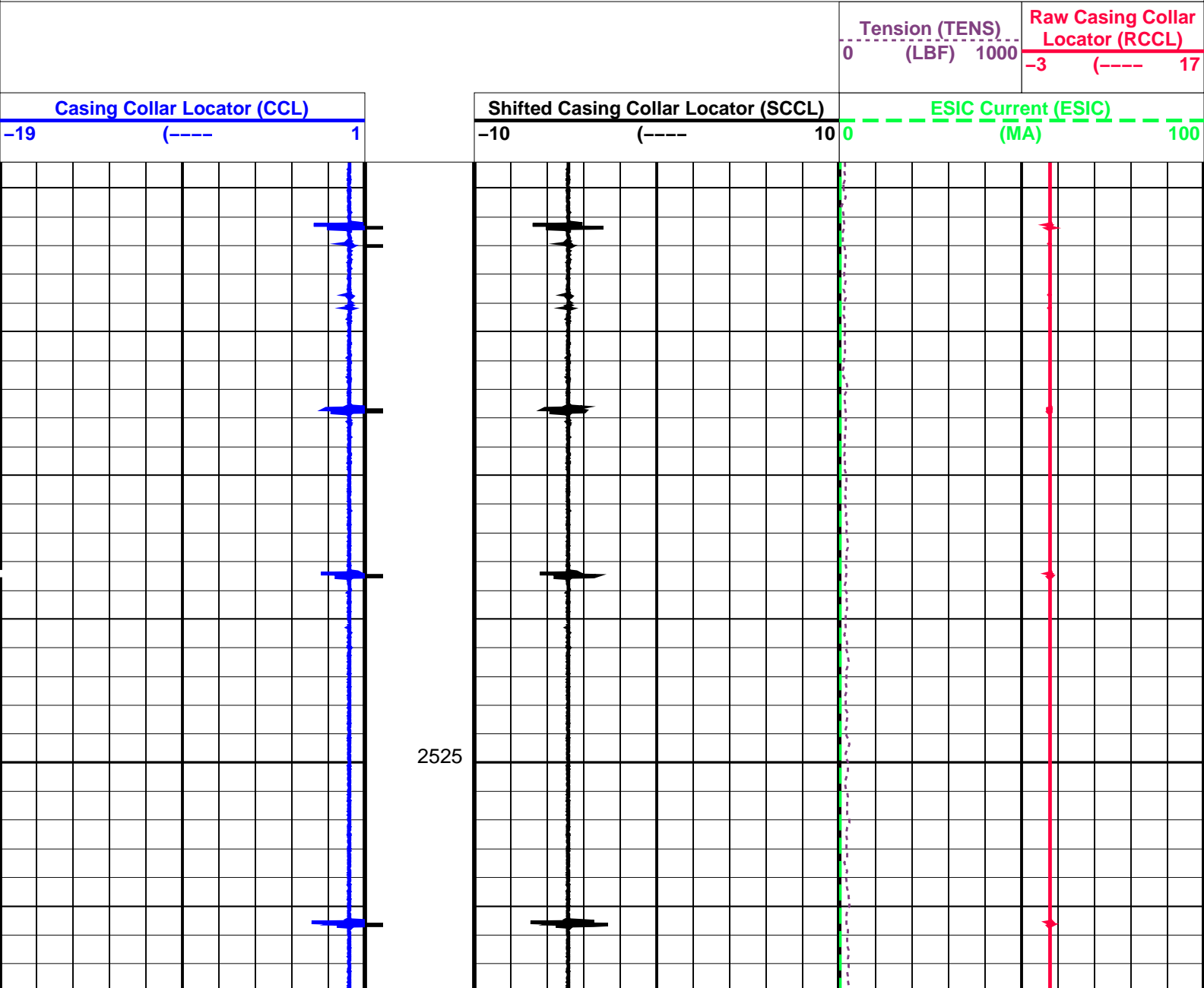
Shooting Pass
String Shot

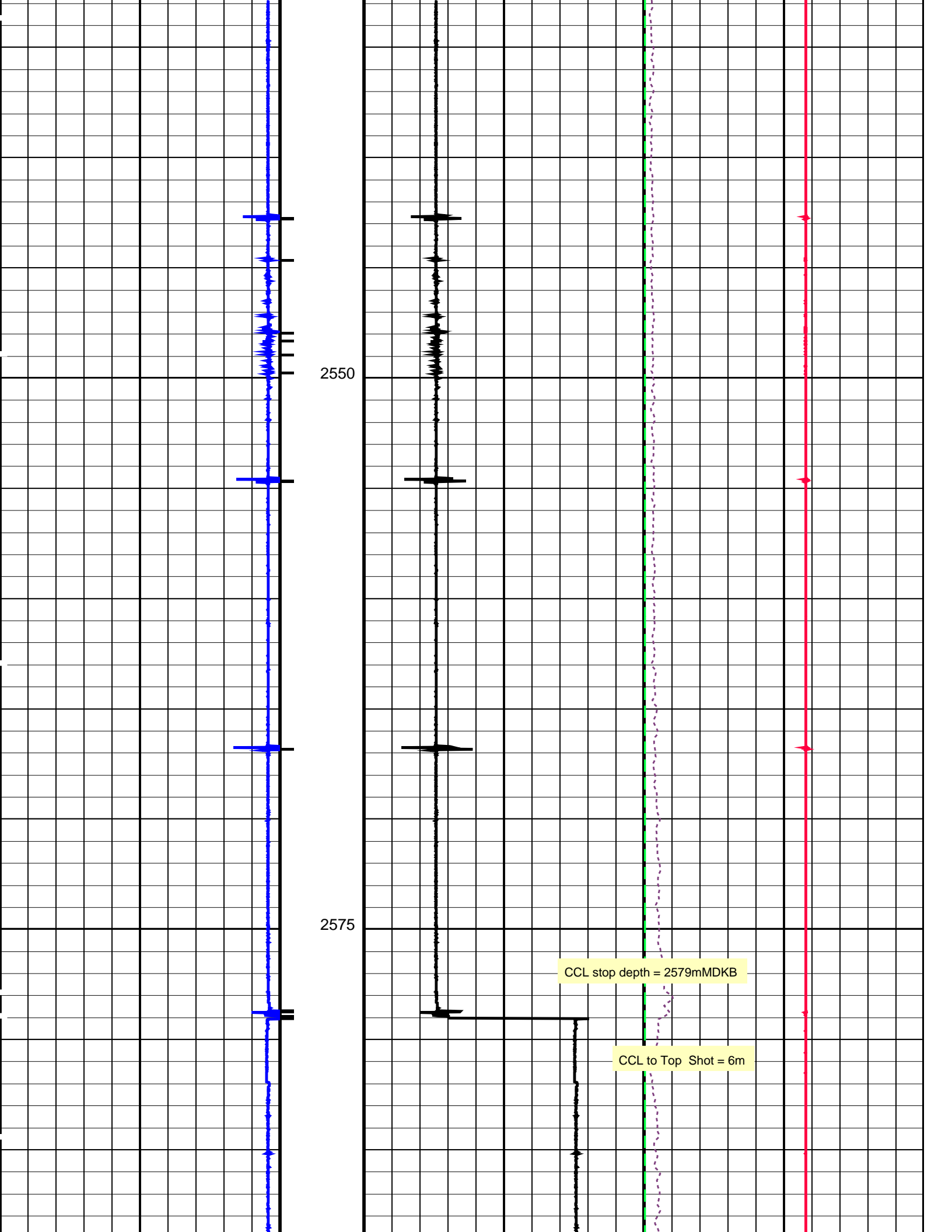
PERFO2 Operational Summary Listing

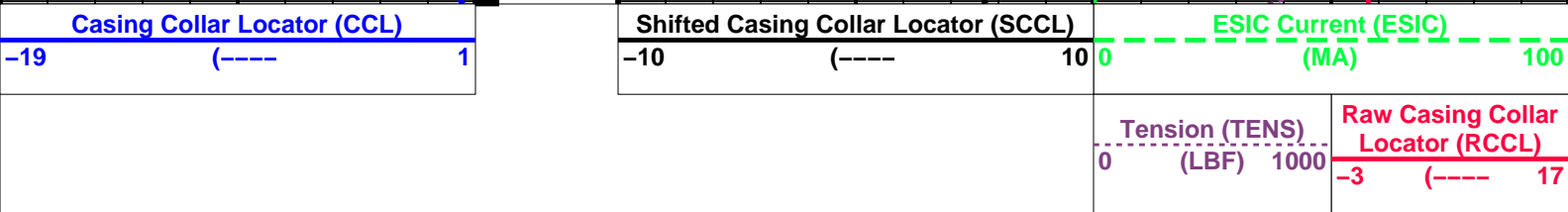
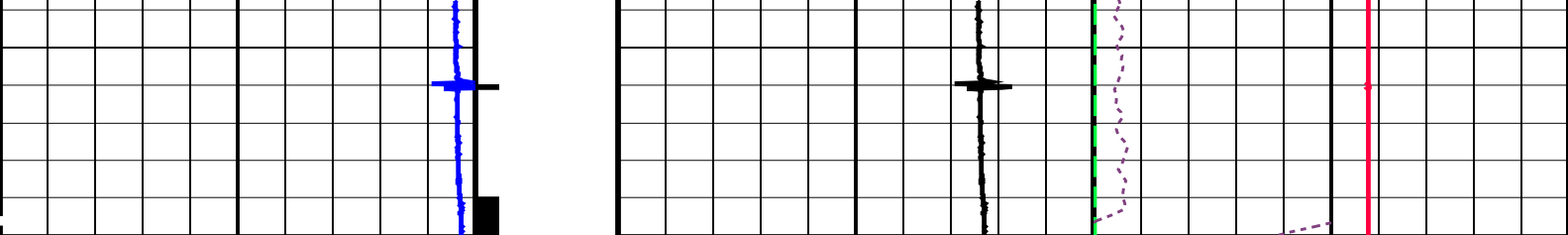
Device	Status	Req Depth (M)	Obs Depth (M)	Time Used
GUN1	Used	2585.0	2585.0	Wed May 16 16:08:55 2007

Output DLIS Files				
DEFAULT	PERFO_015LUP	FN:14	PRODUCER	16-May-2007 16:02
OP System Version: 15C0-309				
MCM				
SHM_GUN	15C0-309	SAFE	15C0-309	
CCL-L	15C0-309			

PIP SUMMARY	
 Casing Collars	
 Time Mark Every 60 S	







PIP SUMMARY

└─ Casing Collars


Time Mark Every 60 S

Parameters			
DLIS Name	Description	Value	
ESDT	SAFE: SAFE DETONATING SYSTEM		
	ESIC Shot Depth Temperature	-17.7778	DEGC
CCLD	CCL-L: Casing Collar Locator		
CCLT	CCL reset delay	12	IN
	CCL Detection Level	0.3	V

Format: PERFO	Vertical Scale: 1:200	Graphics File Created: 16-May-2007 16:02
---------------	-----------------------	--

OP System Version: 15C0-309			
MCM			
SHM_GUN	15C0-309	SAFE	15C0-309
CCL-L	15C0-309		

Output DLIS Files			
DEFAULT	PERFO_015LUP	FN:14	PRODUCER 16-May-2007 16:02



Correlation String Shot

MAXIS Field Log

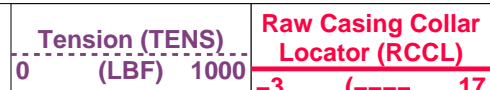
Output DLIS Files					
DEFAULT	PERFO_014LUP	FN:13	PRODUCER	16-May-2007 15:50	2600.4 M 2502.7 M

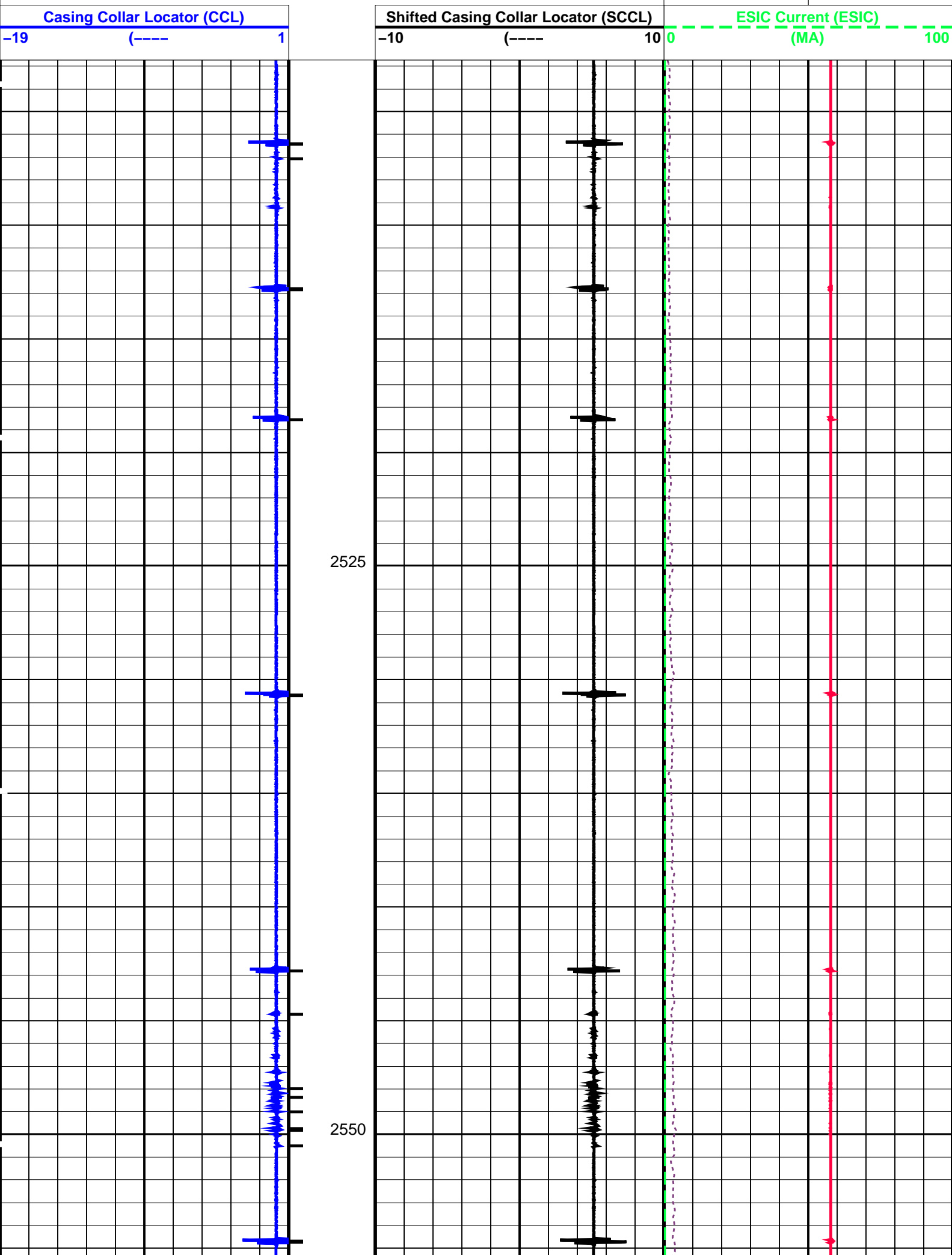
OP System Version: 15C0-309			
MCM			
SHM_GUN	15C0-309	SAFE	15C0-309
CCL-L	15C0-309		

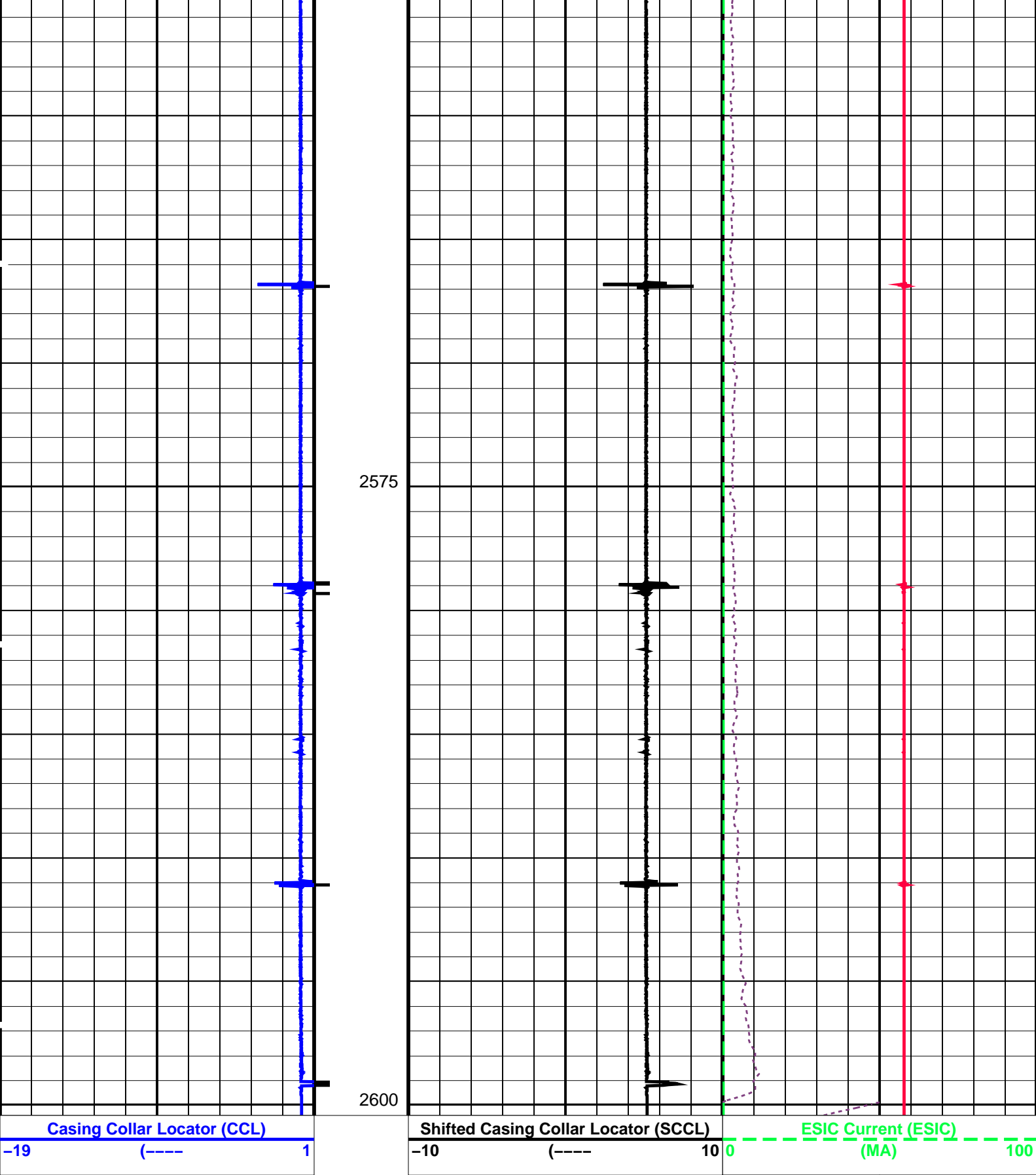
PIP SUMMARY

└─ Casing Collars

Time Mark Every 60 S







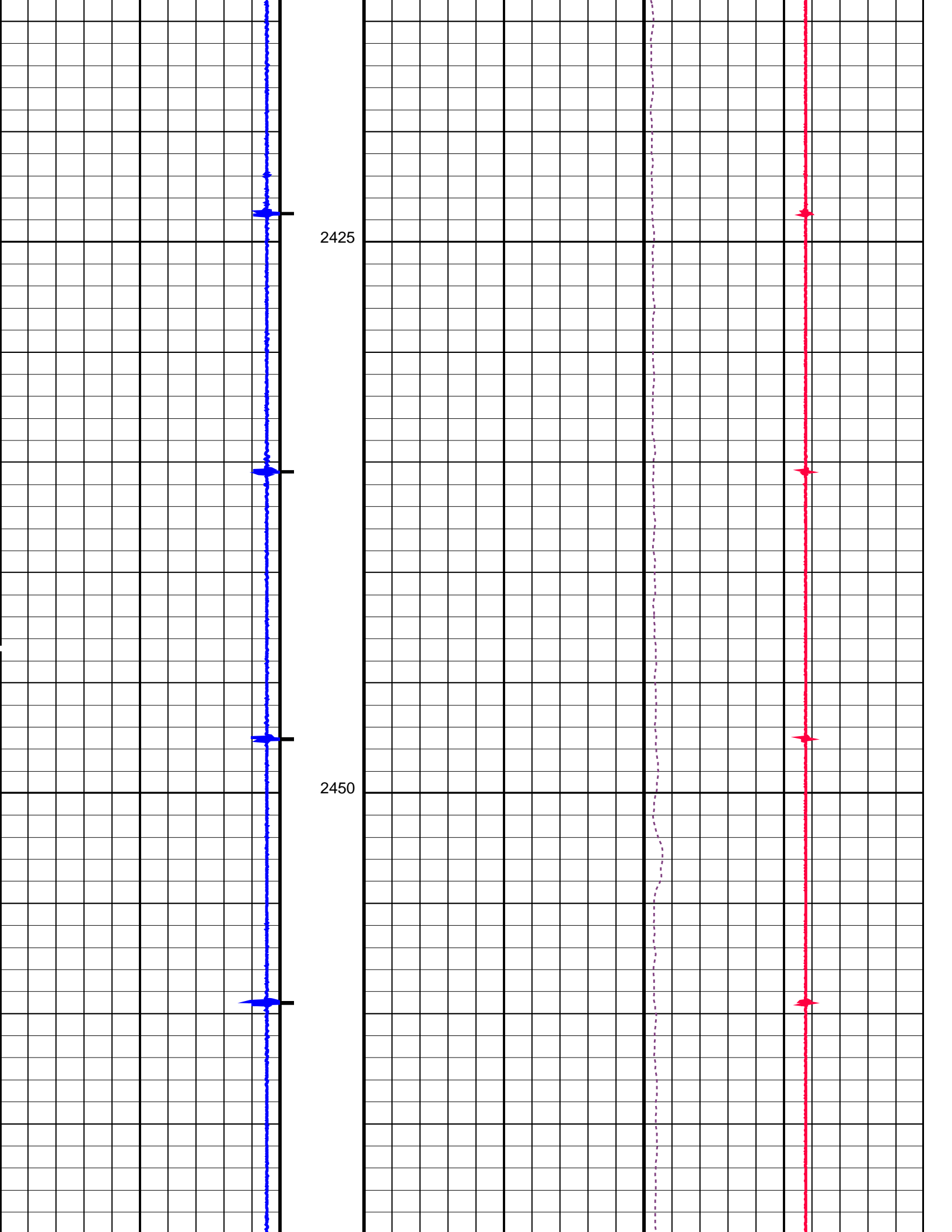
Casing Collar Locator (CCL) -19 (----) 1		Shifted Casing Collar Locator (SCCL) -10 (----) 10		ESIC Current (ESIC) (MA) 0 100		Tension (TENS) (LBF) 0 1000		Raw Casing Collar Locator (RCCL) -3 (----) 17	
---	--	---	--	-----------------------------------	--	--------------------------------	--	--	--

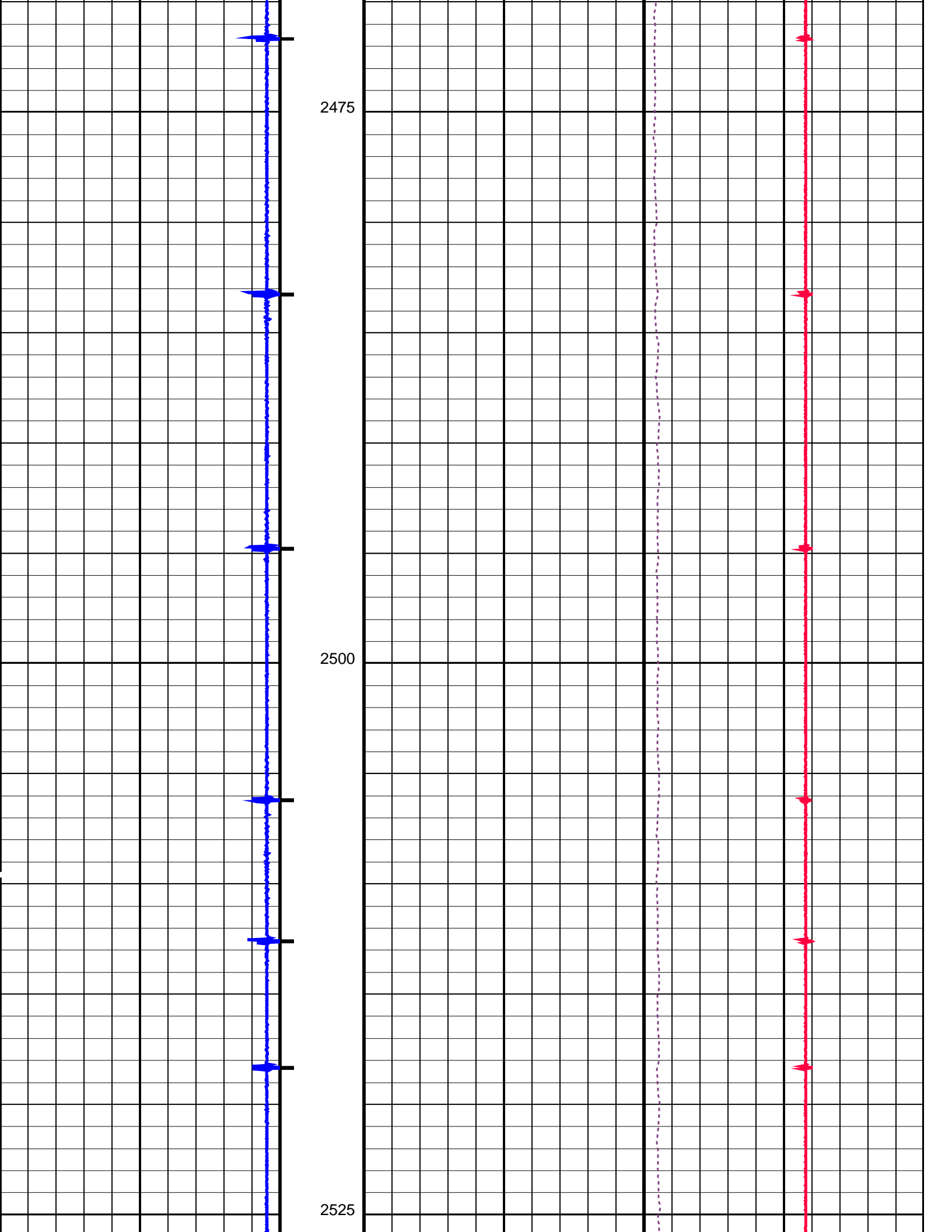
PIP SUMMARY

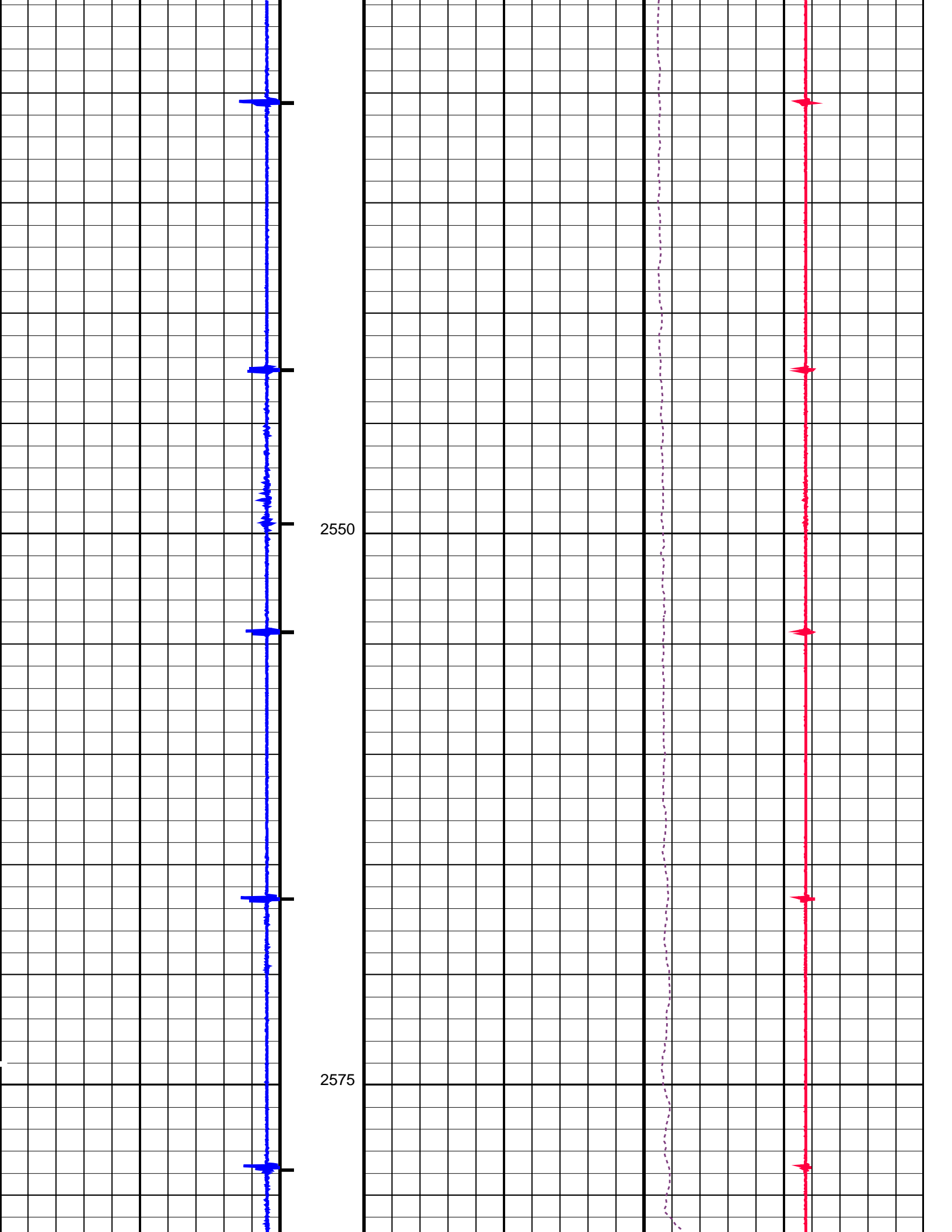
Time Mark Every 60 S

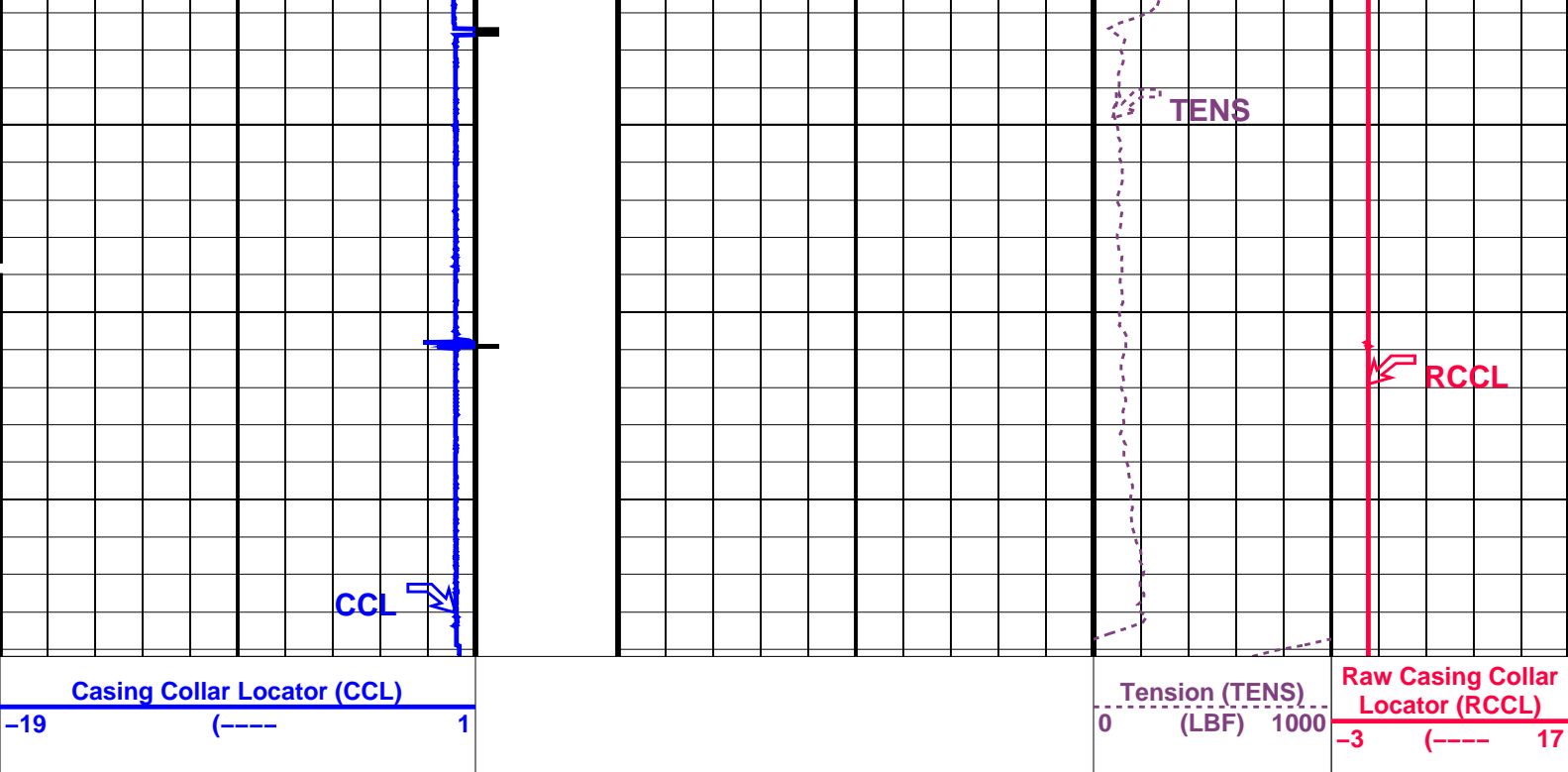
Casing Collars

Parameters









PIP SUMMARY

← Casing Collars

Time Mark Every 60 S

Parameters

DLIS Name	Description	Value
CCLD	CCL-L: Casing Collar Locator	12 IN
CCLT	CCL reset delay	0.3 V
	CCL Detection Level	
DO	System and Miscellaneous	
PP	Depth Offset for Playback	0.0 M
	Playback Processing	NORMAL

Format: PERFO Vertical Scale: 1:200

Graphics File Created: 18-May-2007 15:22

OP System Version: 15C0-309

MCM

CCL-L 15C0-309

Input DLIS Files

DEFAULT CCL_008LUP FN:7 PRODUCER 18-May-2007 11:44 2599.2 M -6.6 M

Output DLIS Files

DEFAULT CCL_031PUP FN:5 PRODUCER 18-May-2007 15:22

Company: **Esso Australia Pty Ltd.**

Schlumberger

Well: **Halibut A-7**
Field: **Gippsland Basin**
Rig: **ISDL Rig 453**
Country: **Australia**

4-7/16 Chemical Cutter
String Shot