

Company: Ezzo Australia Pty Ltd

Well: Halibut A-5

Field: Gippsland Basin

Rig: ISDL Rig 453

Country: Australia

3.65" Speciality Cutter  
CCL

ISDL Rig 453  
Gippsland Basin  
Bass Strait  
Halibut A-5  
Ezzo Australia Pty Ltd

LOCATION	
Bass Strait Gippsland Basin	Elev.: K.B. 29.32 m G.L. -73 m D.F. 29.47 m
Permanent Datum: Log Measured From:	MEAN SEA LEVEL DRILL FLOOR
Drilling Measured From:	Elev.: 0 m 29.5 m above Perm. Datum

State: Victoria	Max. Well Deviation 46 deg	Longitude 148°19' 07.62"E	Latitude 38°24' 20.36"S
--------------------	-------------------------------	------------------------------	----------------------------

Logging Date 20-Apr-2007

Run Number 1

Depth Driller 2788.7 m

Schlumberger Depth 2788.7 m

Bottom Log Interval 1504.8 m

Top Log Interval 1504.8 m

Casing Fluid Type Inhibited Sea Water

Salinity

Density 8.55 lbm/gal

Fluid Level

BIT/CASING/TUBING STRING

Bit Size 8.000 in

From 549.8 m

To 1694.2 m

Casing/Tubing Size 5.500 in

Weight 26.4 lbm/ft

Grade N-80

From 11.3 m

To 1535.5 m

Maximum Recorded Temperatures

Logger On Bottom 21-Apr-2007 16:50

Unit Number 33 AUSL

Recorded By Alex Sword

Witnessed By Mr G.Doty/ Mr C.Stead

Run 1 Run 2 F

Oil Density  
Water Salinity  
Gas Gravity  
Bo

Bw  
1/Bg  
Bubble Point Pressure  
Bubble Point Temperature

Solution GOR  
Maximum Deviation 46 deg

CEMENTING DATA  
Primary/Squeeze Primary

Casing String No  
Lead Cement Type

Volume  
Density  
Water Loss

Additives  
Tail Cement Type  
Volume  
Density  
Water Loss  
Additives

Expected Cement Top

Logging Date

Run Number

Depth Driller

Schlumberger Depth

Bottom Log Interval

Top Log Interval

Casing Fluid Type

Salinity

Density

Fluid Level

BIT/CASING/TUBING STRING

Bit Size

From

To

Casing/Tubing Size

Weight

Grade

From

To

Maximum Recorded Temperatures

Logger On Bottom 16:50

Unit Number 33 AUSL

Recorded By Alex Sword

Witnessed By Mr G.Doty/ Mr C.Stead

Run 4

Date Created: 27-APR-2007 0:02:17

## Logging Cable

Type:	7-46P
Serial Number:	76075
Length:	7315.20 M
Conveyance Method:	Wireline
Rig Type:	Offshore Fixed

Log Sequence:	Subsequent Log In the Well
Reference Log Name:	Tubing Tally
Reference Log Run Number:	
Reference Log Date:	01-May-1999

1. All Schlumberger depth policies followed:
2. IDW is used as primary depth reference
3. Z-Chart used as secondary depth reference
- 4.
- 5.
- 6.

THE USE OF AND RELIANCE UPON THIS RECORDED-DATA BY THE HEREIN NAMED COMPANY (AND ANY OF ITS AFFILIATES, PARTNERS, REPRESENTATIVES, AGENTS, CONSULTANTS AND EMPLOYEES) IS SUBJECT TO THE TERMS AND CONDITIONS AGREED UPON BETWEEN SCHLUMBERGER AND THE COMPANY, INCLUDING: (a) RESTRICTIONS ON USE OF THE RECORDED-DATA; (b) DISCLAIMERS AND WAIVERS OF WARRANTIES AND REPRESENTATIONS REGARDING COMPANY'S USE OF AND RELIANCE UPON THE RECORDED-DATA; AND (c) CUSTOMER'S FULL AND SOLE RESPONSIBILITY FOR ANY INFERENCE DRAWN OR DECISION MADE IN CONNECTION WITH THE USE OF THIS RECORDED-DATA.

OTHER SERVICES2  
OS1:  
OS2:  
OS3:  
OS4:  
OS5:





REMARKS: RUN NUMBER 2

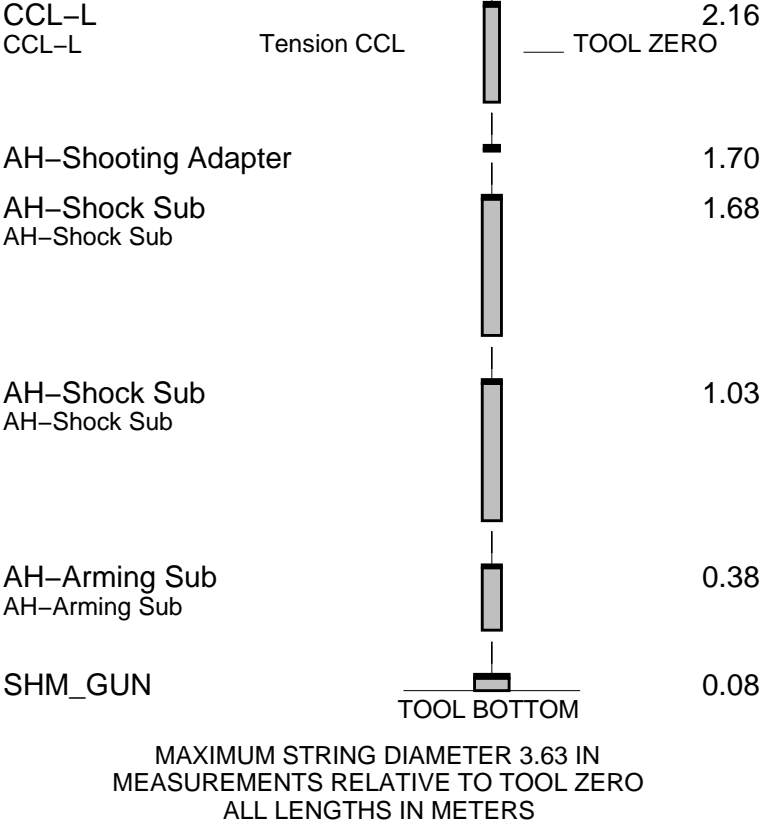
---

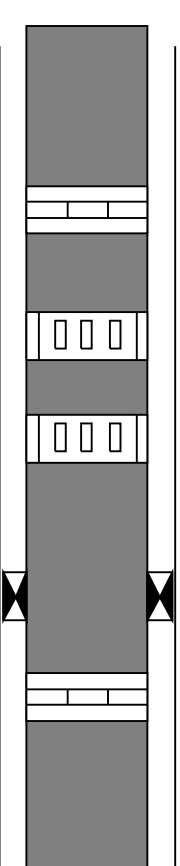
CCL to Centre of Cutter = 1.9m

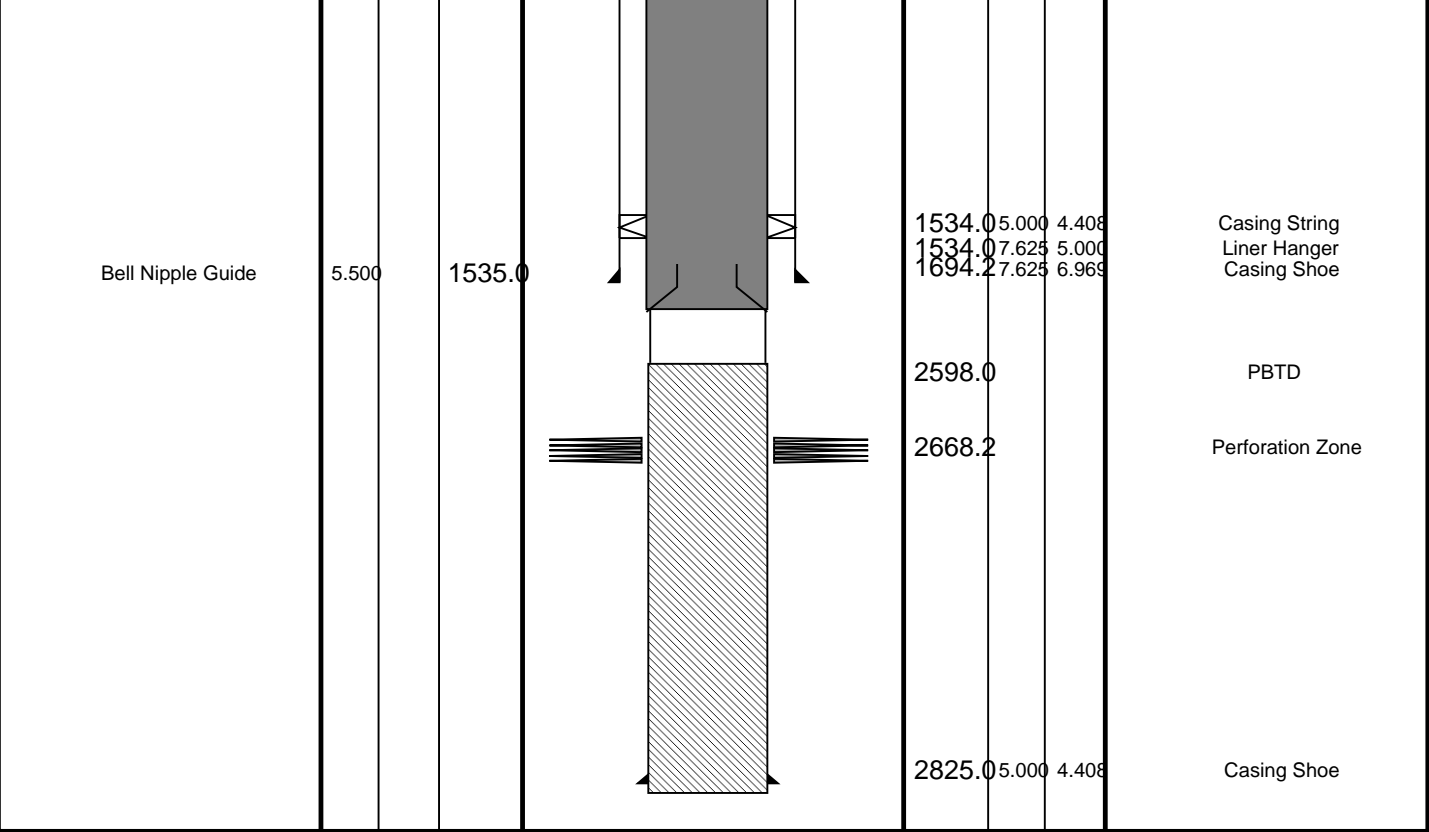
SECURE Initiated					
Pull Applied on tubing = 120KIPS					
Actual free weight of pipe after cut 130KIPS.					
Dual Packoff used to help with U-Tubing effect.					
Day Crew: Kevin Kerr, Nathan Simmons					
Night Crew: Paul Flood, Brendan Flynn					
Performed by Schlumberger					
<div style="text-align: center;">RUN 1</div> <div> <div>SERVICE ORDER #:</div> <div>PROGRAM VERSION:</div> <div>FLUID LEVEL:</div> </div> <div> <div>40000446</div> <div>15C0-309</div> </div>			<div style="text-align: center;">RUN 2</div> <div> <div>SERVICE ORDER #:</div> <div>PROGRAM VERSION:</div> <div>FLUID LEVEL:</div> </div>		
LOGGED INTERVAL	START	STOP	LOGGED INTERVAL	START	STOP

[illegible]

RUN 1		RUN 2	
SURFACE EQUIPMENT			
SHM-EA			
DOWNHOLE EQUIPMENT			
MH-22 MH-22		6.38	
AH-38		5.90	
EQF-46 EQF-46		5.82	
EQF-46 EQF-46		3.99	



Production String	(in)		(m)	Well Schematic	(m)	(in)		Casing String
	OD	ID	MD		MD	OD	ID	
Tubing	5.500		11.3		12.0	10.750	10.050	Casing String
					12.0	7.625	6.969	Casing String
Nipple	5.500		157.8					
Sliding Sleeve	5.500		627.3					
Sliding Sleeve	5.500		877.9		549.8	10.750	10.050	Casing Shoe
Packer	7.625	5.500	1507.7					
Nipple	5.500		1516.0					



## Powercutter Shooting Pass

MAXIS Field Log

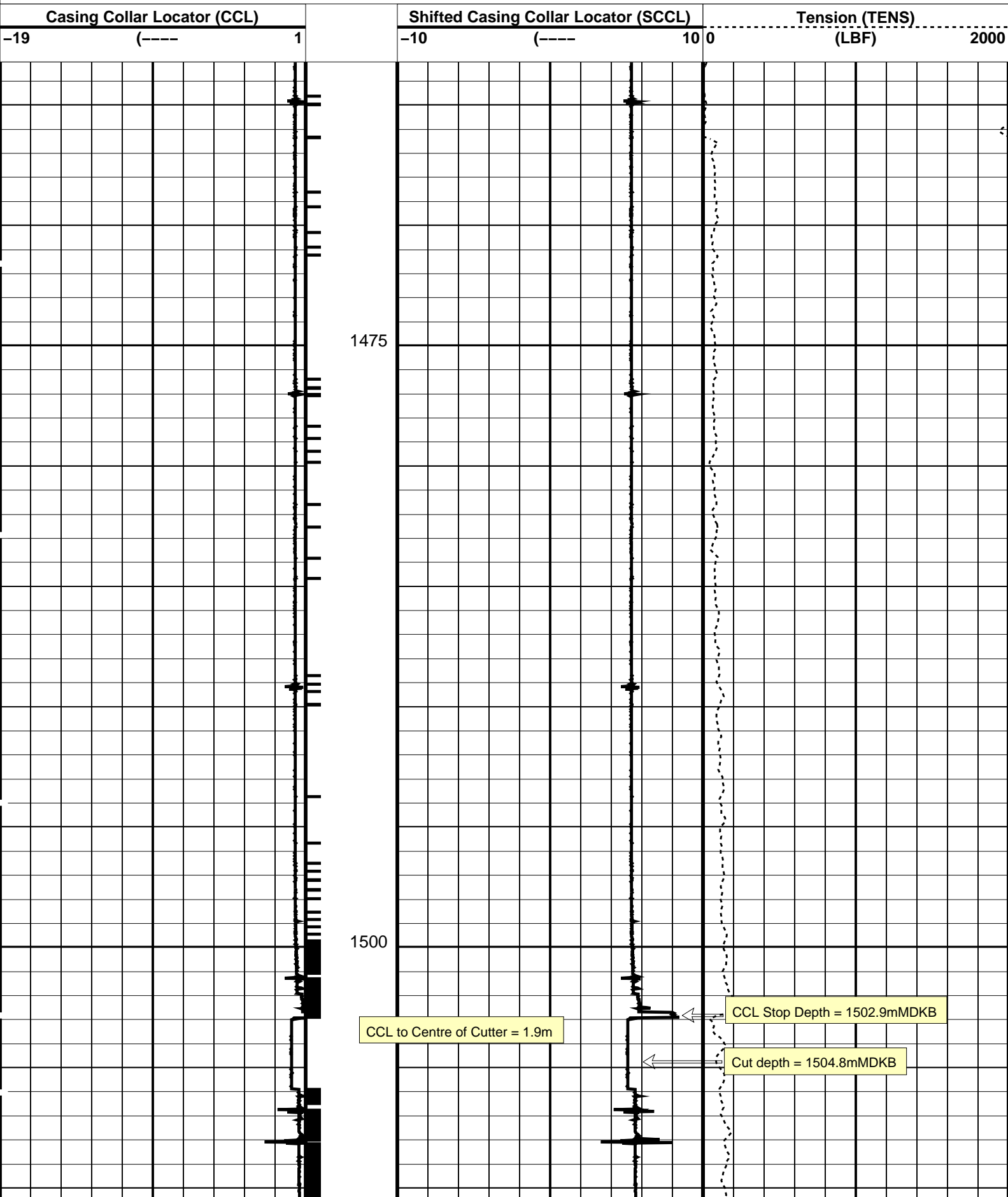
### PERFO2 Operational Summary Listing

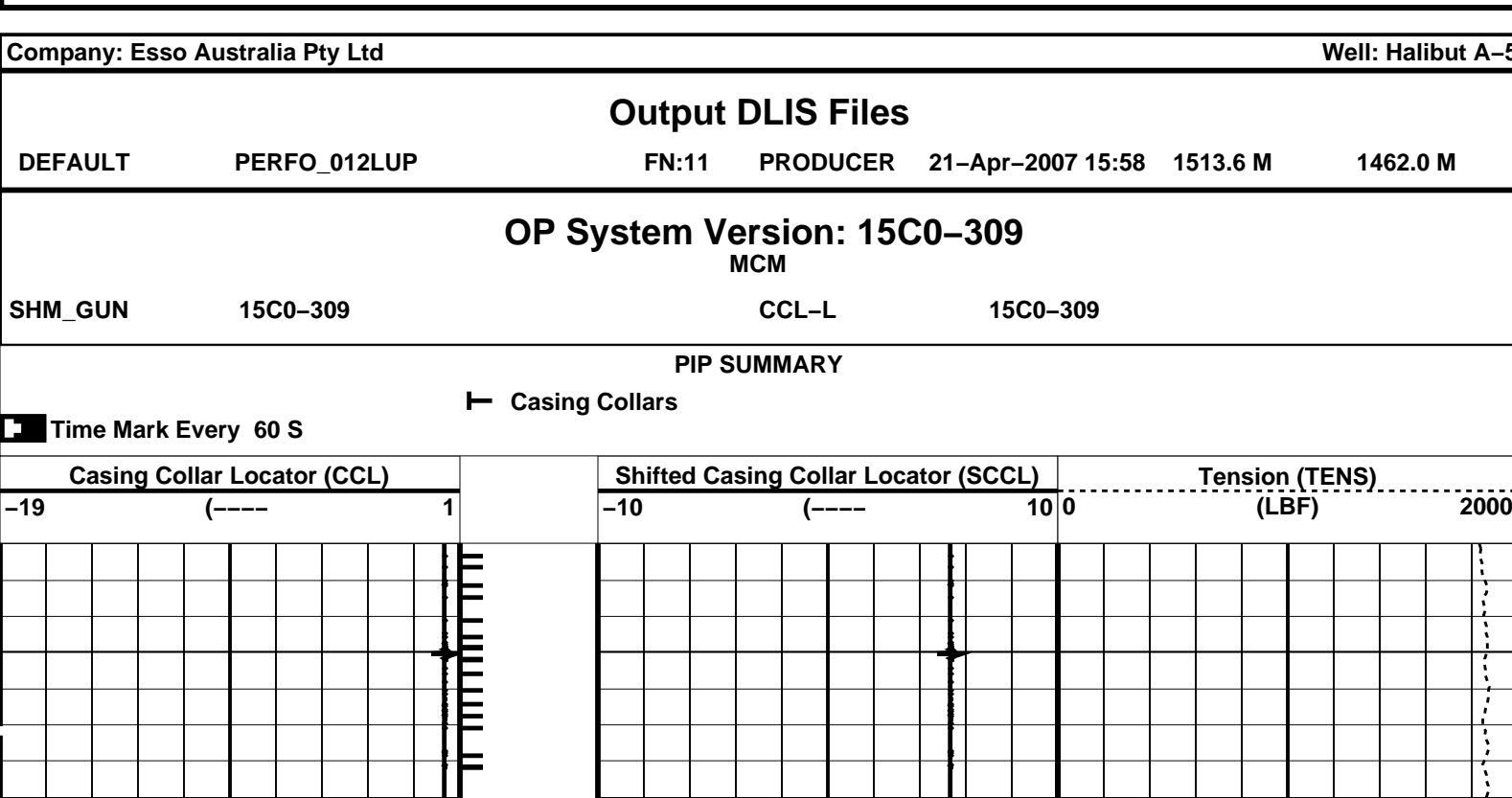
Device	Status	Req Depth ( M)	Obs Depth ( M)	Time Used
GUN1	Used	1504.8	1504.8	Sat Apr 21 16:41:04 2007

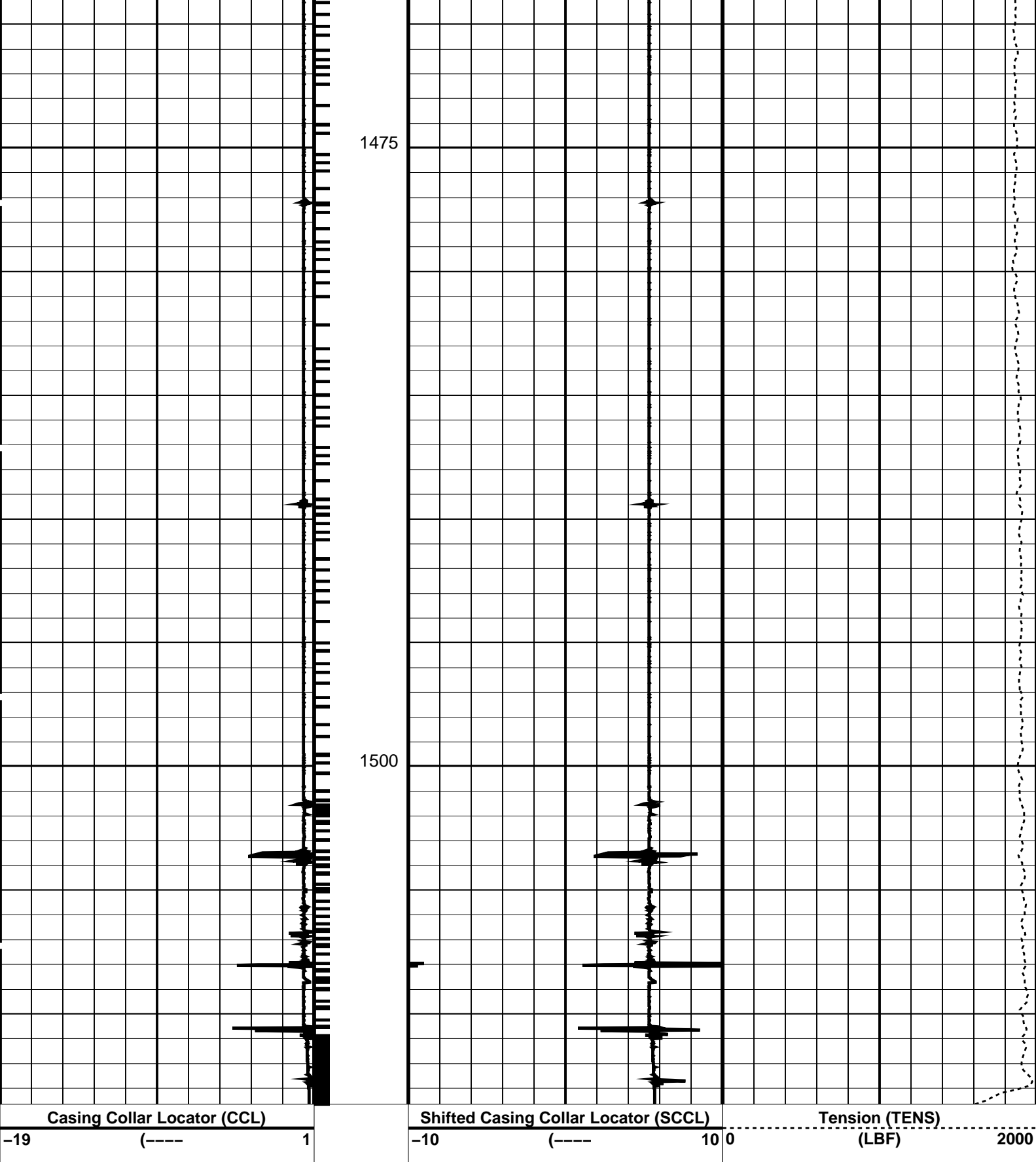
PIP SUMMARY

└─ Casing Collars

Time Mark Every 60 S







PIP SUMMARY

Time Mark Every 60 S

Casing Collars

Parameters		
DLIS Name	Description	Value
CCLD	CCL-L: Casing Collar Locator	12 IN
CCLT	CCL reset delay	0.3 V
	CCL Detection Level	



Format: PERFO		Vertical Scale: 1:200		Graphics File Created: 21-Apr-2007 15:58	
OP System Version: 15C0-309					
MCM					
SHM_GUN	15C0-309	CCL-L	15C0-309		
Output DLIS Files					
DEFAULT	PERFO_012LUP	FN:11	PRODUCER	21-Apr-2007 15:58	

Company:	Esso Australia Pty Ltd	Schlumberger
Well:	Halibut A-5	
Field:	Gippsland Basin	
Rig:	ISDL Rig 453	
Country:	Australia	
3.65" Speciality Cutter CCL		