

Company: Esso Australia Pty. Ltd

Well: FTA A10
Field: Fortescue
Rig: 175

Country: Australia

Owen's Oil Tools 2 1/8" Magna Bridge plug
2 1/2" PowerCutter
06-05-2007

Rig: 175
Field: Fortescue
Location: Gippsland Basin
Well: FTA A10
Company: Esso Australia Pty. Ltd

LOCATION			Elev.: K.B. 34.5 m G.L. -69 m D.F. 42.49 m
Gippsland Basin Bass Strait			
Permanent Datum:	Mean sea level		
Log Measured From:	Drill floor		
Drilling Measured From:	Drill floor		42.5 m above Perm. Datum
State: Victoria	Max. Well Deviation 61 deg	Longitude 148° 16' 36.62" E	Latitude 38° 24' 31.39" S

Logging Date	6-May-2007		
Run Number	1		
Depth Driller	4055 m		
Schlumberger Depth	3860 m Not Tagged		
Bottom Log Interval	3845 m		
Top Log Interval	3845 m		
Casing Fluid Type	Brine		
Salinity			
Density	8.55 g/cm3		
Fluid Level	0 m		
BIT/CASING/TUBING STRING			
Bit Size	8.500 in		
From	0 m		
To	4055 m		
Casing/Tubing Size	3.500 in		
Weight	9.3 lpm/ft		
Grade	J-55		
From	19.54 m		
To	3851.12 m		
Maximum Recorded Temperatures			
Logger On Bottom	Time		10:30
Unit Number	Location		
Recorded By	Owen Darby		
Witnessed By	Dicky Barswell		

PVT DATA				Run 1	Run 2	Run 3
Oil Density						
Water Salinity						
Gas Gravity						
Bo						
Bw						
1/Bg						
Bubble Point Pressure						
Bubble Point Temperature						
Solution GOR						
Maximum Deviation				61 deg		
CEMENTING DATA						
Primary/Squeeze				Primary		
Casing String No						
Lead Cement Type						
Volume						
Density						
Water Loss						
Additives						
Tail Cement Type						
Volume						
Density						
Water Loss						
Additives						
Expected Cement Top						
Logging Date						
Run Number						
Depth Driller						
Schlumberger Depth						
Bottom Log Interval						
Top Log Interval						
Casing Fluid Type						
Salinity						
Density						
Fluid Level						
BIT/CASING/TUBING STRING						
Bit Size						
From						
To						
Casing/Tubing Size						
Weight						
Grade						
From						
To						
Maximum Recorded Temperatures						
Logger On Bottom	Time					
Unit Number	Location					
Recorded By						
Witnessed By						

DEPTH SUMMARY LISTING

Date Created: 7-MAY-2007 19:05:36

Depth System Equipment

Depth Measuring Device		Tension Device		Logging Cable	
Type:	IDW-E	Type:	CMTD-B/A	Type:	7-46ZV-XS
Serial Number:	727	Serial Number:	1074	Serial Number:	76371
Calibration Date:	04-01-2007	Calibration Date:	07-May-2007	Length:	5928.06 M
Calibrator Serial Number:	1009	Calibrator Serial Number:	1174	Conveyance Method: Wireline Rig Type: Offshore_Fixed	
Calibration Cable Type:	7-46ZV-XS	Calibration Gain:	1.63		
Wheel Correction 1:	-5	Calibration Offset:	-880.00		
Wheel Correction 2:	-4				

Depth Control Parameters

Log Sequence:	Subsequent Trip To the Well
Reference Log Name:	Existing well completion equipment listing
Reference Log Run Number:	N/A
Reference Log Date:	11-Jan-1993
Subsequent Trip Down Log Correction:	-2.00 M

Depth Control Remarks

1. Used IDW as primary depth control
2. Used Z-Chart as secondary depth control
3.
4.
5.
6.

DISCLAIMER

THE USE OF AND RELIANCE UPON THIS RECORDED-DATA BY THE HEREIN NAMED COMPANY (AND ANY OF ITS AFFILIATES, PARTNERS, REPRESENTATIVES, AGENTS, CONSULTANTS AND EMPLOYEES) IS SUBJECT TO THE TERMS AND CONDITIONS AGREED UPON BETWEEN SCHLUMBERGER AND THE COMPANY, INCLUDING: (a) RESTRICTIONS ON USE OF THE RECORDED-DATA; (b) DISCLAIMERS AND WAIVERS OF WARRANTIES AND REPRESENTATIONS REGARDING COMPANY'S USE OF AND RELIANCE UPON THE RECORDED-DATA; AND (c) CUSTOMER'S FULL AND SOLE RESPONSIBILITY FOR ANY INFERENCE DRAWN OR DECISION MADE IN CONNECTION WITH THE USE OF THIS RECORDED-DATA.











OTHER SERVICES1	OTHER SERVICES2
OS1:	OS1:
OS2:	OS2:
OS3:	OS3:
OS4:	OS4:
OS5:	OS5:
REMARKS: RUN NUMBER 1	REMARKS: RUN NUMBER 2
Correlated to Fortescue A10 Existing well completion equipment listing	
Objective:	
Rig up wireline and pressure test dual pack off to 3,000 psi against crown valve	
.Make up toolstring incorporating 1-11/16" CCL-L, Owen Oil Tools	
setting tool and Owen Magna range bridge plug. RIH with toolstring and set plug	
in the tubing joint located @ 3845m MDKB. POOH rig down wireline.	
Rig up wireline with FCBV, pressure test dual pack off against crown valve	

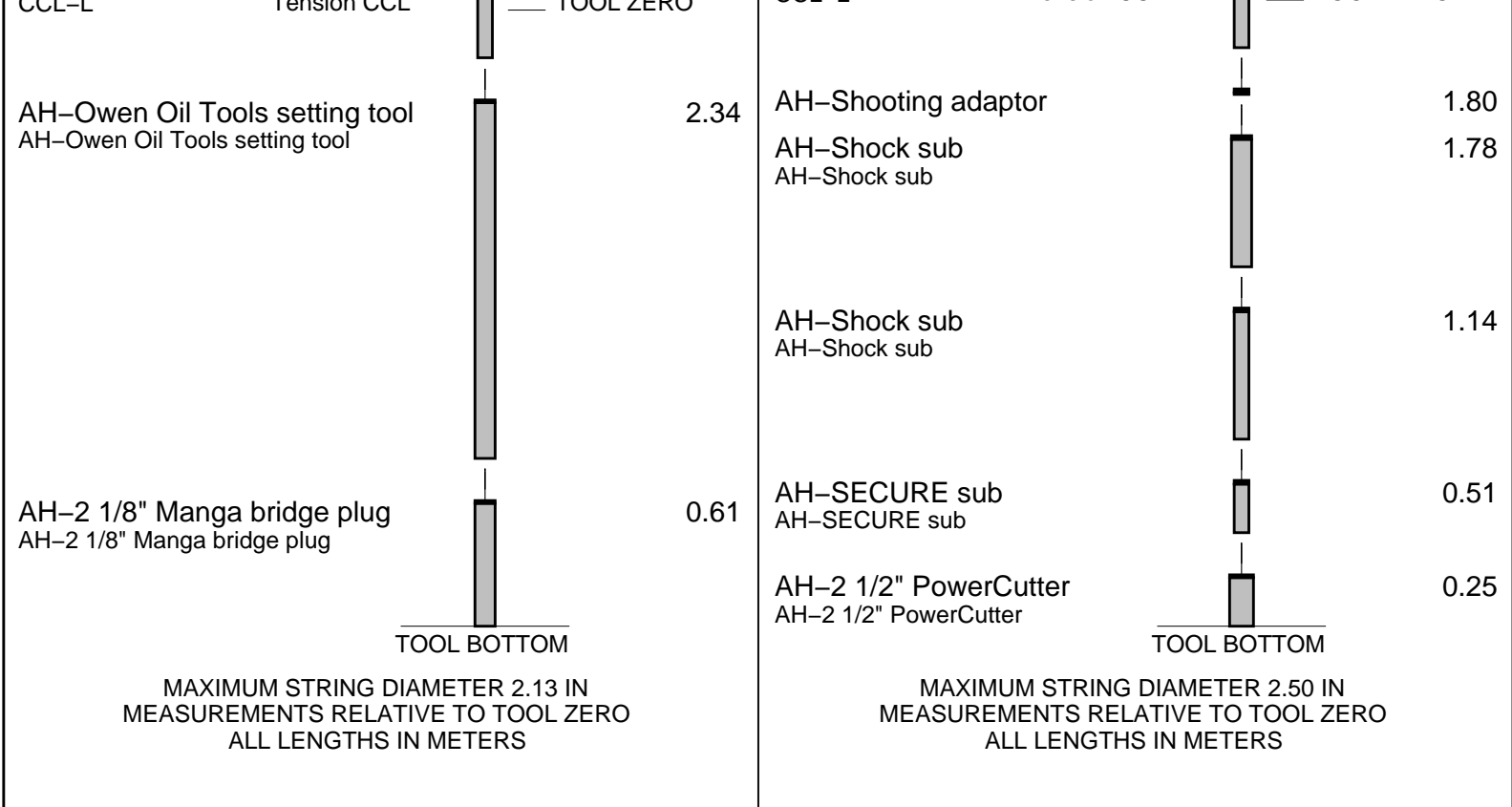
Rig up wireline with FOBV, pump in sub and Dual pack off. pressure test to 300psi low and 3000psi high against the FOBV. Pick up tubing string weight to cutting depth then apply 15% overpull. Make up toolstring incorporating 2 1/2" PowerCutter and 1 11/16" CCL. RIH with toolstring , correlate on depth, cut tubing, POOH and rig down.

Schlumberger Crew:
operators= Zeb Casey, Paul Flood and Nathan Simmons (Days)
Rick Murray, Luke Dooley and Scott Lansbery (Nights)

RUN 1			RUN 2		
SERVICE ORDER #:		40000478	SERVICE ORDER #:		
PROGRAM VERSION:		15C0-309	PROGRAM VERSION:		
FLUID LEVEL:		0 m	FLUID LEVEL:		
LOGGED INTERVAL	START	STOP	LOGGED INTERVAL	START	STOP

EQUIPMENT DESCRIPTION

RUN 1			RUN 2		
SURFACE EQUIPMENT			SURFACE EQUIPMENT		
WITM (SHM)			WITM (SHM)		
DOWNHOLE EQUIPMENT			DOWNHOLE EQUIPMENT		
MH-22 MH-22		6.98	MH-22 MH-22		6.45
AH-38		6.50	AH-38		5.97
EQF-46 3002 EQF-46		6.45	EQF-46 3002 EQF-46		5.92
EQF-46 3003 EQF-46		4.62	EQF-46 3003 EQF-46		4.09
CCL-L 9851 CCL-L		2.79	CCL-L 9851 CCL-L		2.26
Tension CCL — TOOL ZERO			Tension CCL — TOOL ZERO		

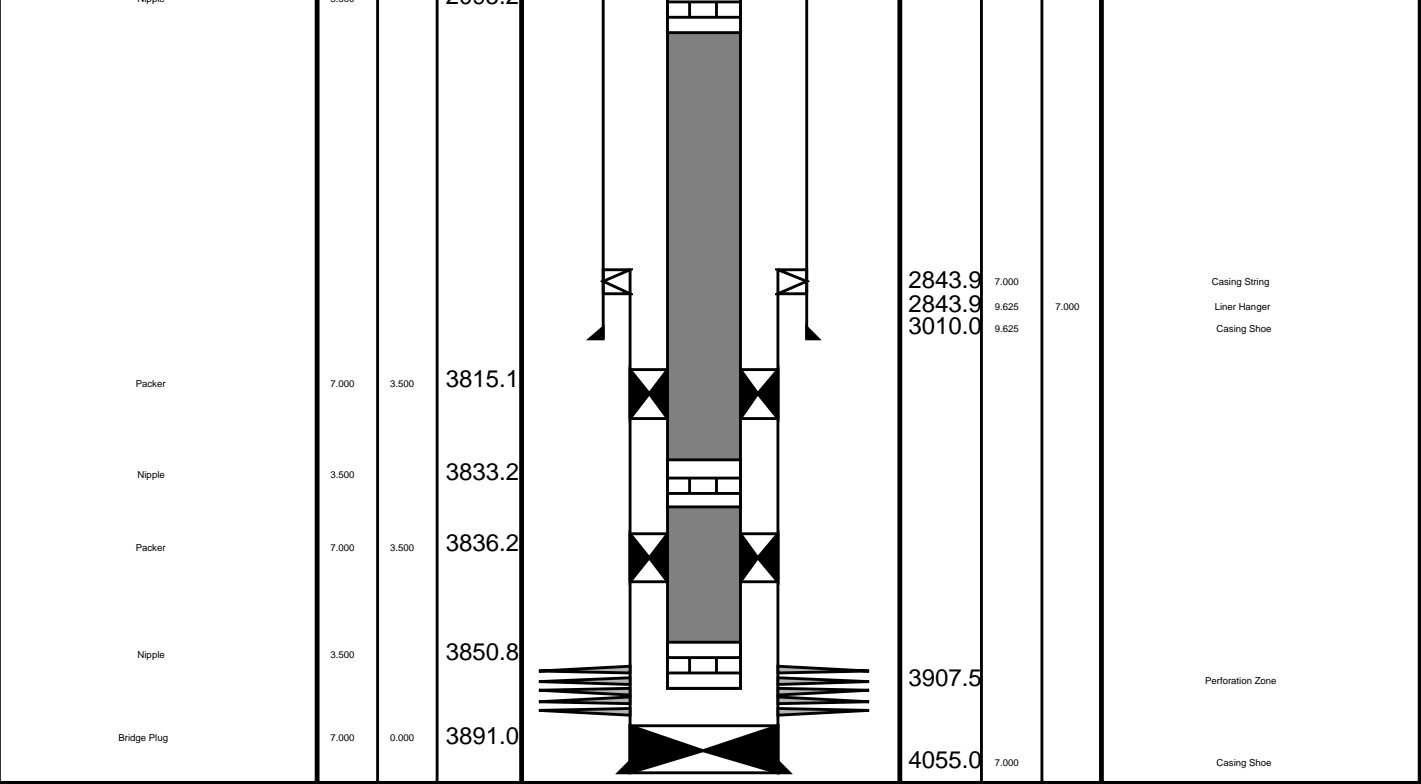


Client: Esso Australia Pty Ltd
 Well: FTA A10
 Field: Fortescue
 State: Victoria
 Country: Australia

5/7/2007

Rig Name: 175
 Reference Datum: Mean Sea Level
 Elevation: 34.5 m

Production String	(in)		(m)	Well Schematic	(m)		(in)		Casing String
	OD	ID			MD	MD	OD	ID	
Tubing	3.500		19.5		0.0	13.375	9.625	Casing String Casing String	
SSSV	3.500		467.4						
Gas Lift Mandrel	3.500		1508.4		1352.6	13.375		Casing Shoe	
Gas Lift Mandrel	3.500		2079.0						
Nipple	3.500		2095.2						



Job Events Summary

MAXIS Field Log

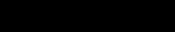
Schlumberger Job Event Summary

Time	Elapsed Time	Depth (M)	File
Rig Up Started	6-May-2007 7:00		
Simulated Log	6-May-2007 7:15	000:03	PERFO_005LUP
Hot checked toolstring for plug run			
Log Pass (down)	6-May-2007 8:46	001:26	383.1 – 3844.9 PERFO_008LDP
RIH			
Log Pass (up)	6-May-2007 10:48	000:07	3881.8 – 3805.7 PERFO_015LUP
Plug correlation pass			
Log Pass (up)	6-May-2007 11:01	000:09	3860.0 – 3788.5 PERFO_017LUP
Plug setting pass			
Simulated Log	9-May-2007 10:55	000:26	PERFO_023LUP
OP checked toolstring			
Simulated Log	9-May-2007 11:22	000:51	PERFO_024LUP
Hot checked toolstring			
Log Pass (down)	9-May-2007 13:09	001:11	371.1 – 3840.6 PERFO_026LDP
RIH with 2 1/2" PowerCutter			
Log Pass (up)	9-May-2007 14:52	000:06	3840.2 – 3770.7 PERFO_032LUP

Correlation pass for 2 1/2" PowerCutter					
Log Pass (up)	9-May-2007 15:02	000:09	3838.5 – 3777.1	PERFO_033LUP	
Shooting pass for 2 1/2" PowerCutter					
Log Pass (up)	9-May-2007 15:45	000:10	2628.4 – 2057.2	PERFO_034LUP	
POOH with PowerCutter					
Rig Down Completed	9-May-2007 17:00				



2 1/2" PowerCutter Cutting Pass



2 1/2" PowerCutter

Cutting Pass

MAXIS Field Log

Device	Status	Req Depth (M)	Obs Depth (M)	Time Used
--------	--------	----------------	----------------	-----------

GUN1	Used	3810.0	3810.0	Wed May 09 15:07:42 2007
------	------	--------	--------	--------------------------

Well: FTA A10

Output DLIS Files						
DEFAULT	PERFO_033LUP	FN:32	PRODUCER	09-May-2007 15:02	3838.5 M	3777.1 M

OP System Version: 15C0-309
MCM

MCM

PIP SUMMARY

└─ Casing Collars

Time Mark Every 60 S

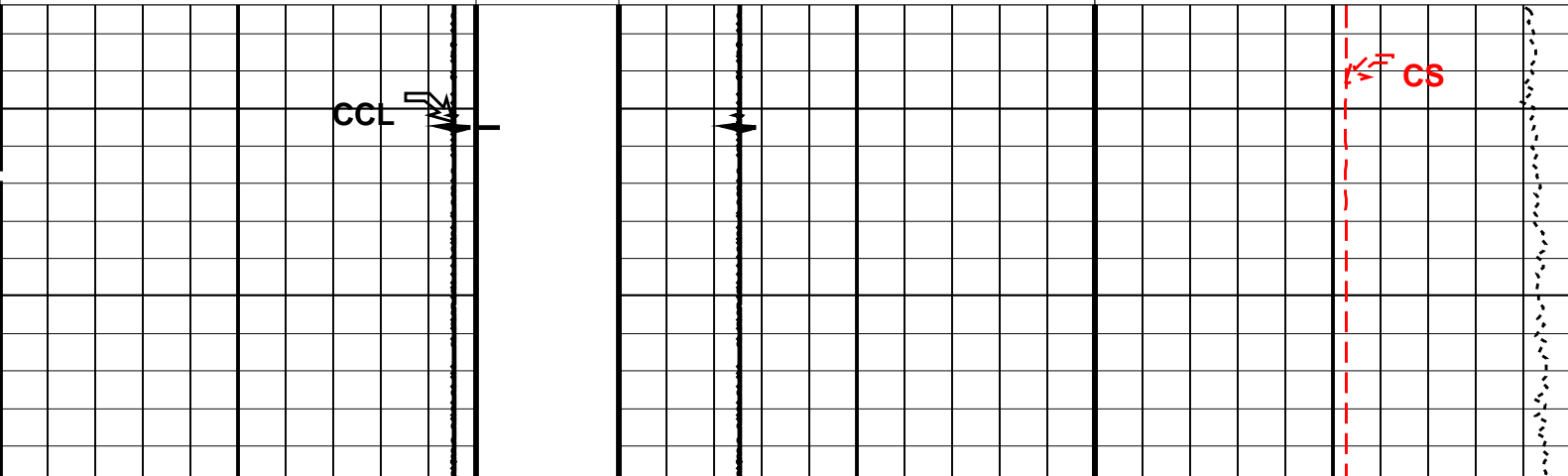
Cable Speed (CS)
0 (F/HR) 50000

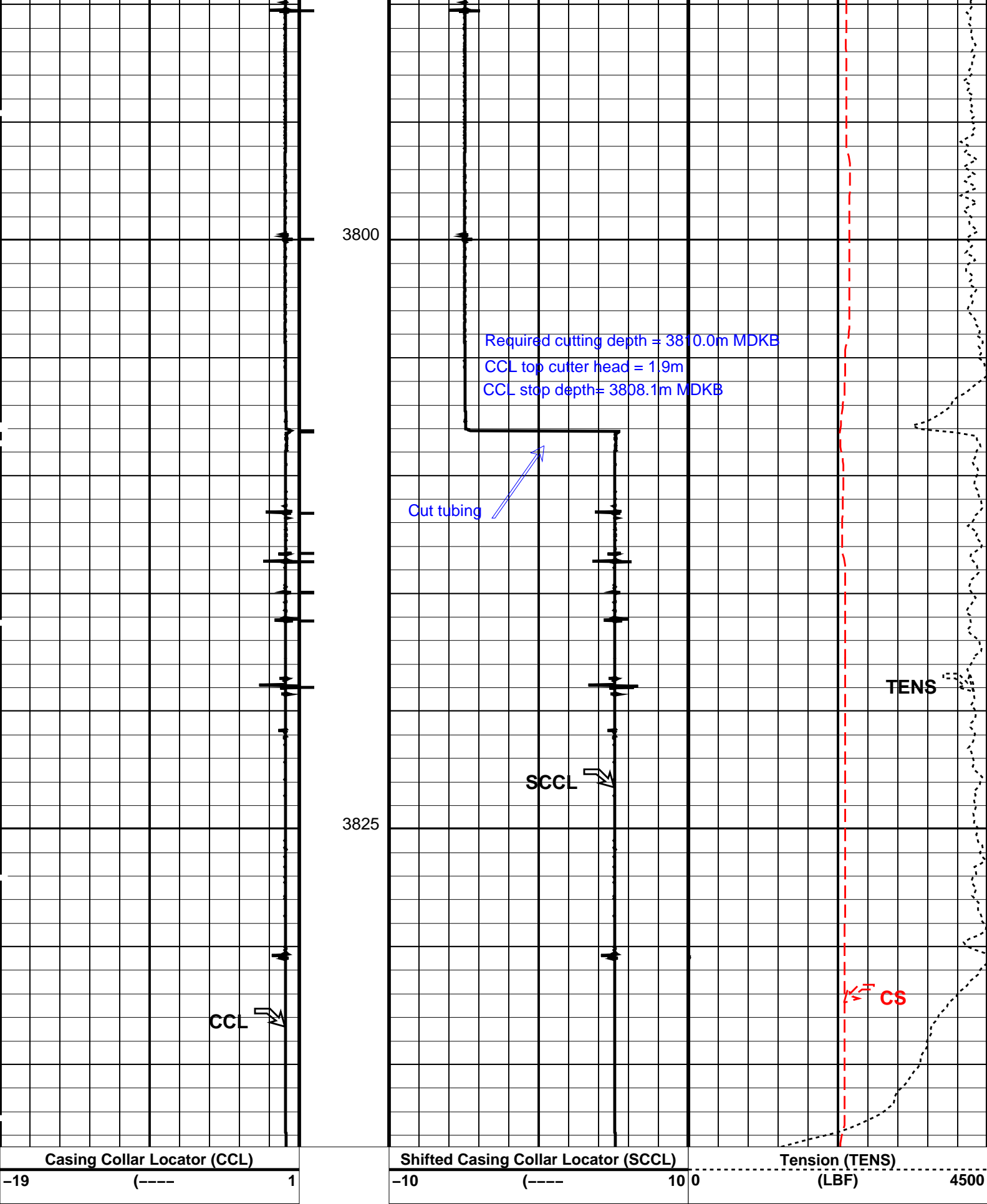
Casing Collar Locator (CCL)		
-19	(----	1

Shifted Casing Collar Locator (SCCL)

Tension (TENS)

(LBF) 4500





Cable Speed (CS)
0 (F/HR) 50000

PIP SUMMARY

— Casing Collars

Parameters

DLIS Name	Description	Value
CCL-L: Casing Collar Locator		
CCLD	CCL reset delay	12 IN
CCLT	CCL Detection Level	0.3 V

Format: PERFO_1 Vertical Scale: 1:200

Graphics File Created: 09-May-2007 15:02

OP System Version: 15C0-309

MCM

CCL-L 15C0-309 SHM_GUN 15C0-309

Output DLIS Files

DEFAULT PERFO_033LUP FN:32 PRODUCER 09-May-2007 15:02

Schlumberger2 1/2" PowerCutter
Correlation Pass

MAXIS Field Log

Company: Esso Australia Pty. Ltd

Well: FTA A10

Output DLIS Files

DEFAULT PERFO_032LUP FN:31 PRODUCER 09-May-2007 14:52 3840.2 M 3770.7 M

OP System Version: 15C0-309

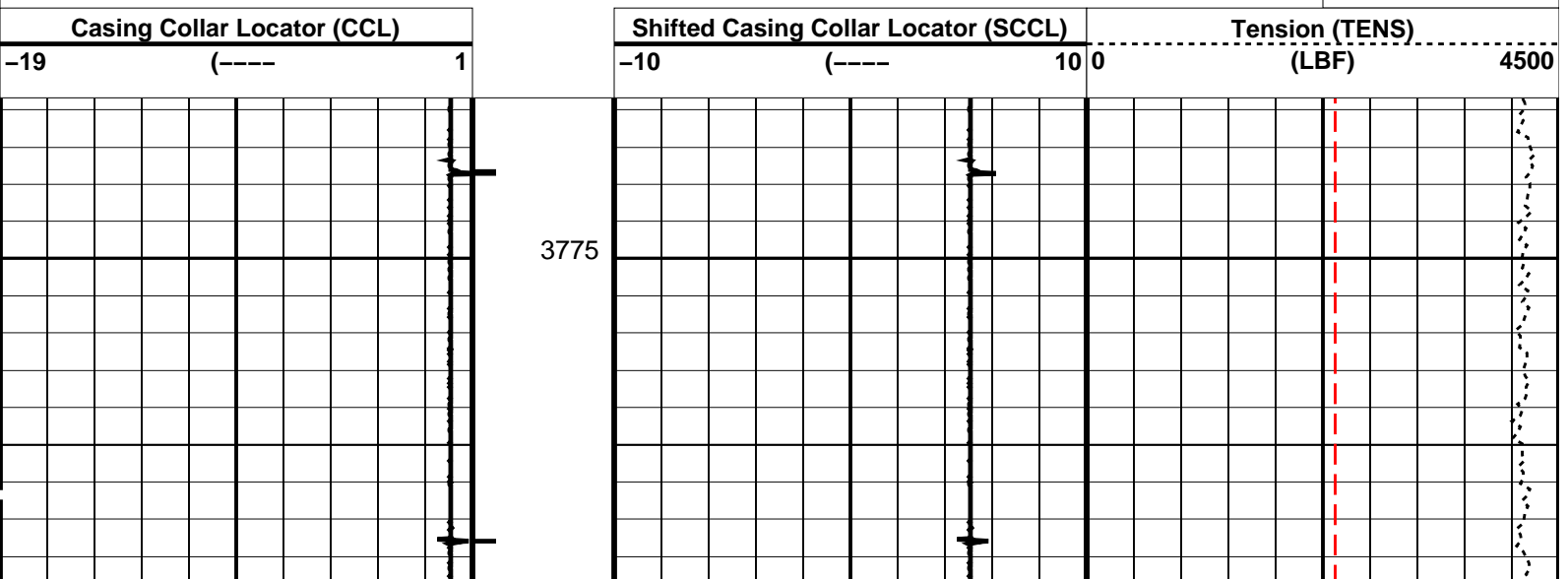
MCM

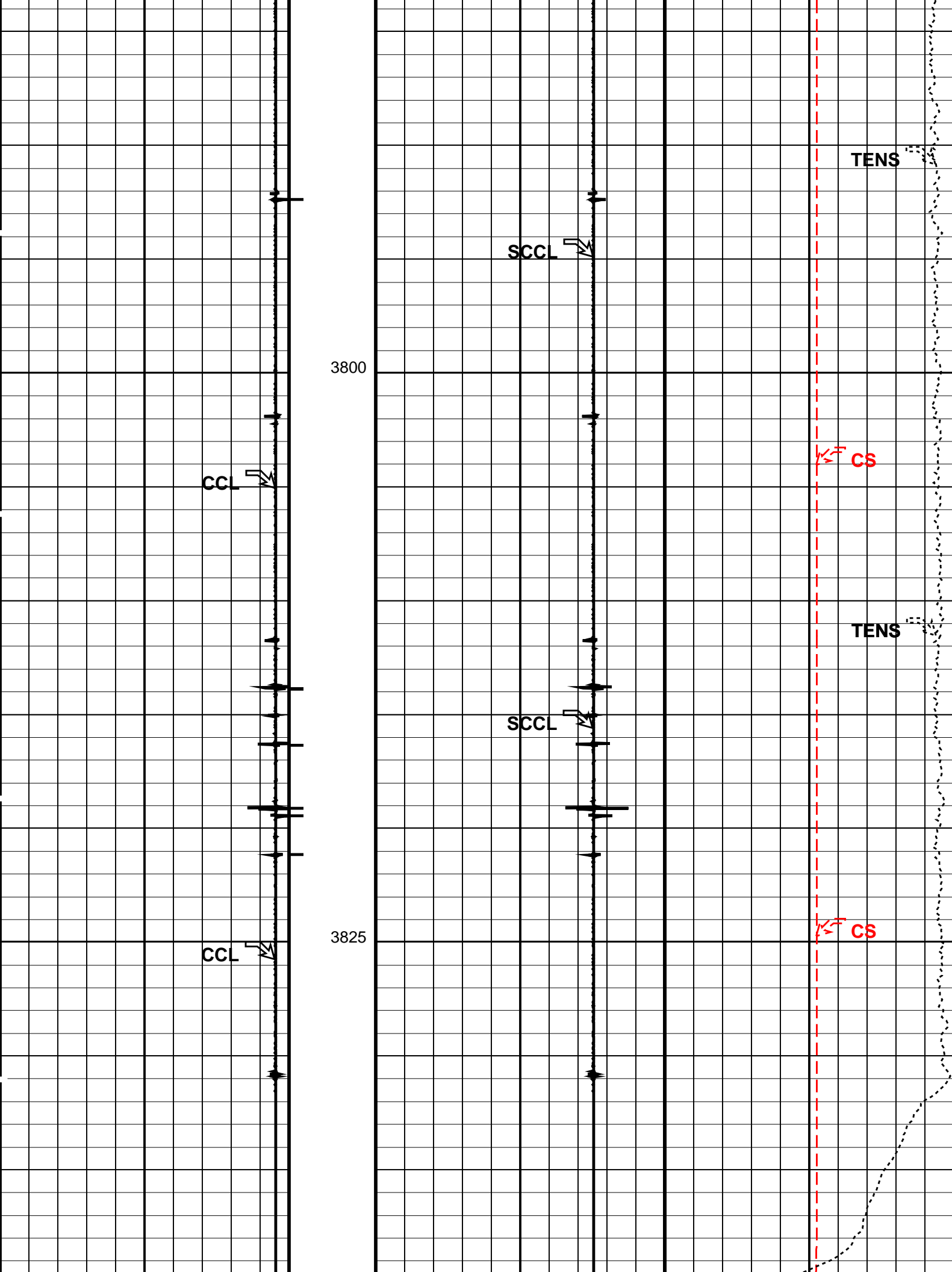
CCL-L 15C0-309 SHM_GUN 15C0-309

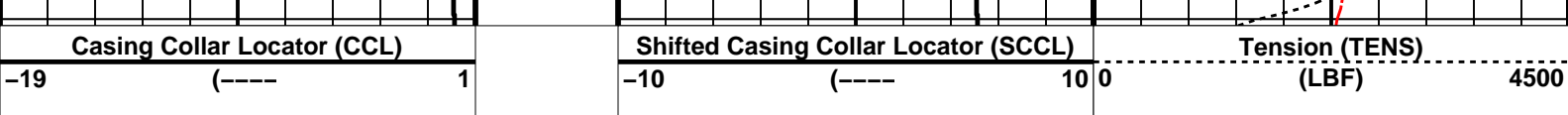
PIP SUMMARY

Casing Collars

Time Mark Every 60 S

Cable Speed (CS)
0 (F/HR) 50000





	Cable Speed (CS) 0 (F/HR) 50000
--	------------------------------------

PIP SUMMARY

Time Mark Every 60 S

Casing Collars

Parameters		
DLIS Name	Description	Value
CCLD	CCL-L: Casing Collar Locator	12 IN
CCLT	CCL reset delay	0.3 V
	CCL Detection Level	

Format: PERFO_1 Vertical Scale: 1:200 Graphics File Created: 09-May-2007 14:52

OP System Version: 15C0-309

MCM

CCL-L

15C0-309

SHM_GUN

15C0-309

Output DLIS Files		
DEFAULT	PERFO_032LUP	FN:31 PRODUCER 09-May-2007 14:52

Schlumberger

2 1/8" Magna Range Bridge Plug Setting Pass

MAXIS Field Log

PERFO2 Operational Summary Listing				
Device	Status	Req Depth (M)	Obs Depth (M)	Time Used
GUN1	Used	3845.0	3845.0	Sun May 06 11:04:06 2007

Company: Esso Australia Pty. Ltd Well: FTA A10

Output DLIS Files		
DEFAULT	PERFO_017LUP	FN:16 PRODUCER 06-May-2007 11:01

OP System Version: 15C0-309

MCM

CCL-L

15C0-309

SHM_GUN

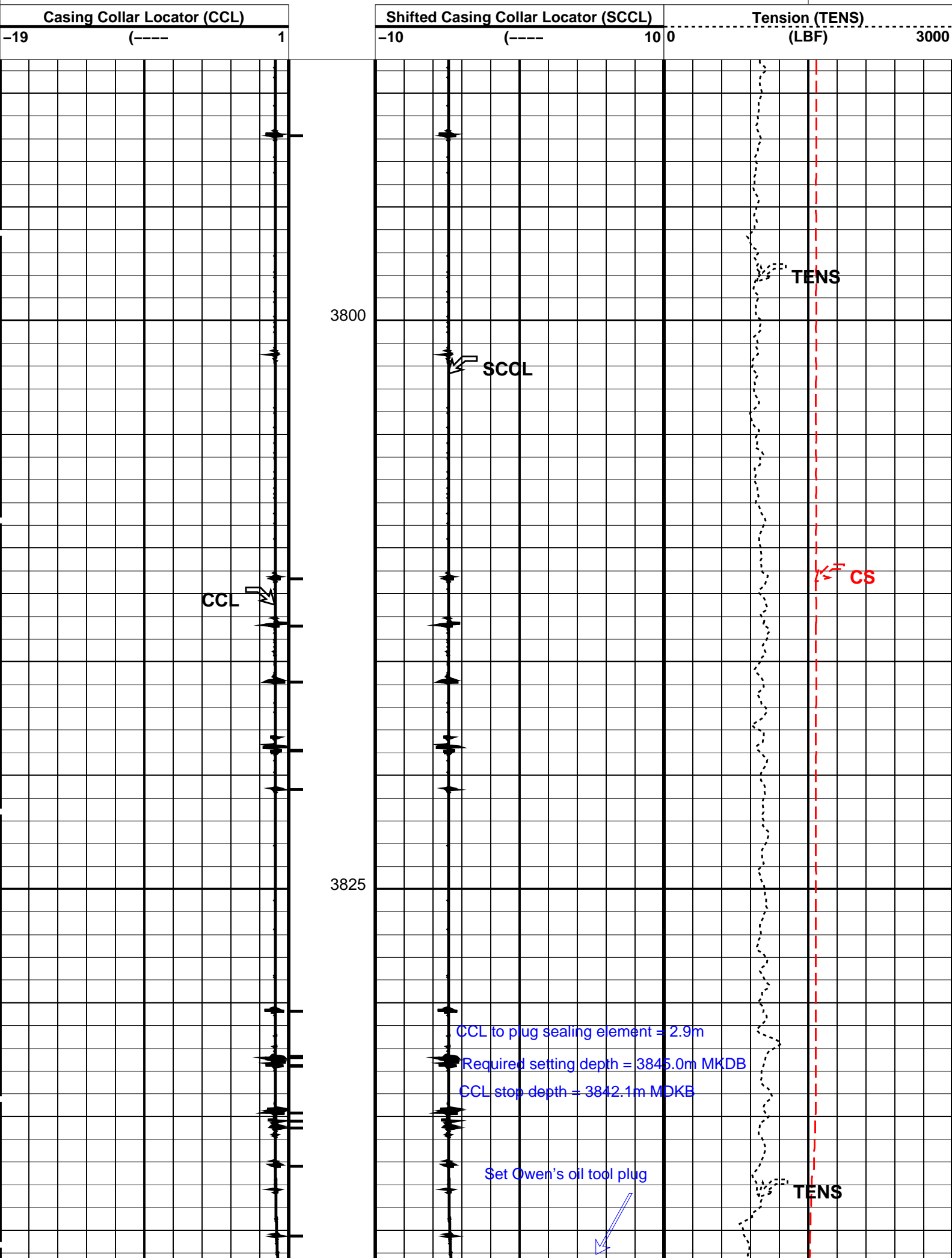
15C0-309

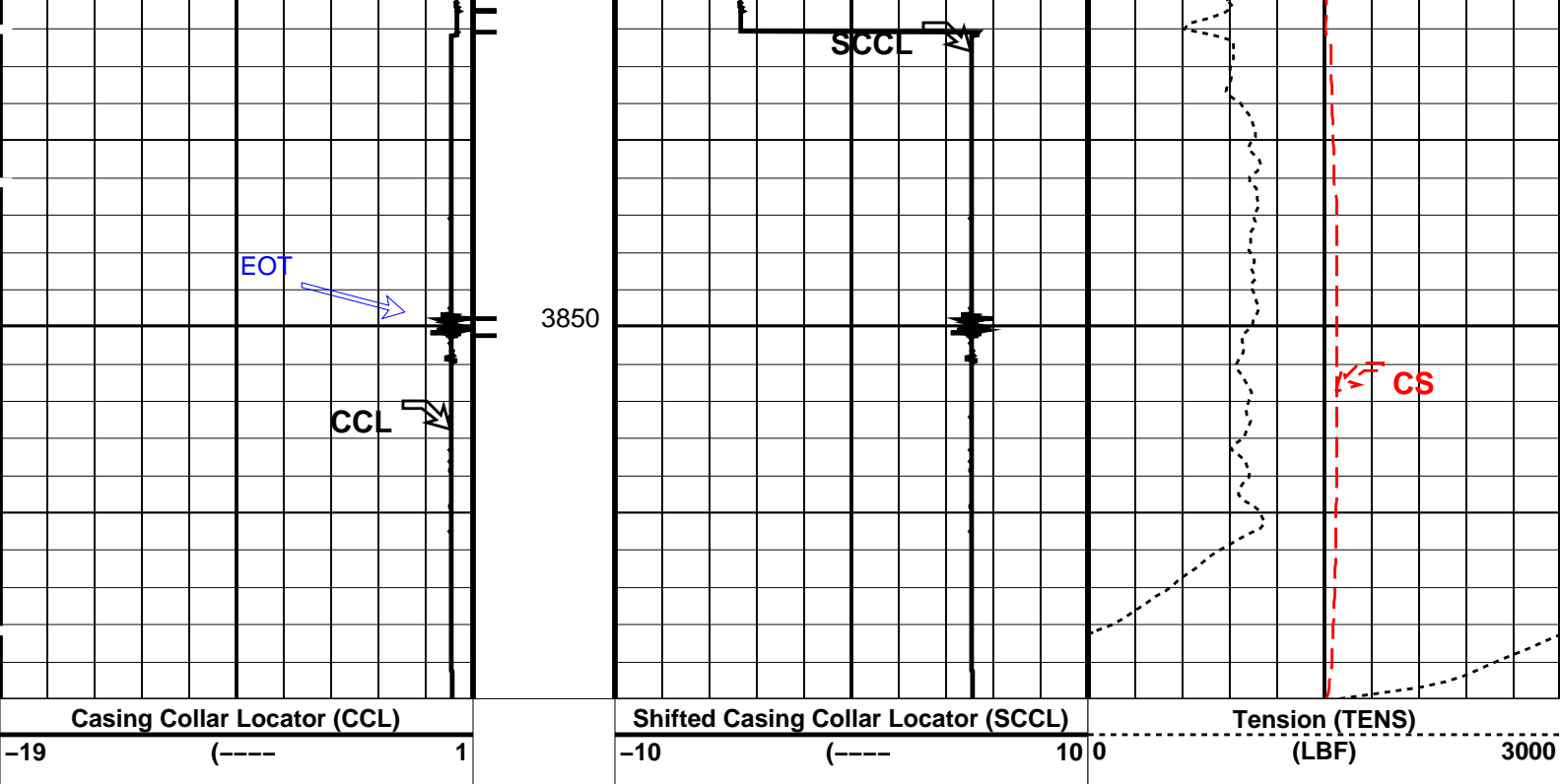
PIP SUMMARY

Time Mark Every 60 S

Casing Collars

	Cable Speed (CS) 0 (F/HR) 50000
--	------------------------------------





Cable Speed (CS)
0 (F/HR) 50000

PIP SUMMARY

Time Mark Every 60 S

Parameters

DLIS Name	Description	Value
CCLD	CCL-L: Casing Collar Locator	12 IN
CCLT	CCL reset delay	0.3 V
	CCL Detection Level	

Format: PERFO_1 Vertical Scale: 1:200 Graphics File Created: 06-May-2007 11:01

OP System Version: 15C0-309

MCM

CCL-L 15C0-309 SHM_GUN 15C0-309

Output DLIS Files

DEFAULT PERFO_017LUP FN:16 PRODUCER 06-May-2007 11:01

Schlumberger

2 1/8" Magna Range Bridge Plug
Correlation Pass

MAXIS Field Log

Company: Esso Australia Pty. Ltd

Well: FTA A10

Input DLIS Files

DEFAULT PERFO_015LUP FN:14 PRODUCER 06-May-2007 11:01 0001-0-M 0005-7-M

Output DLIS Files

DEFAULT PERFO_016PUP FN:15 PRODUCER 06-May-2007 10:59 3882.2 M 3806.6 M

OP System Version: 15C0-309

MCM

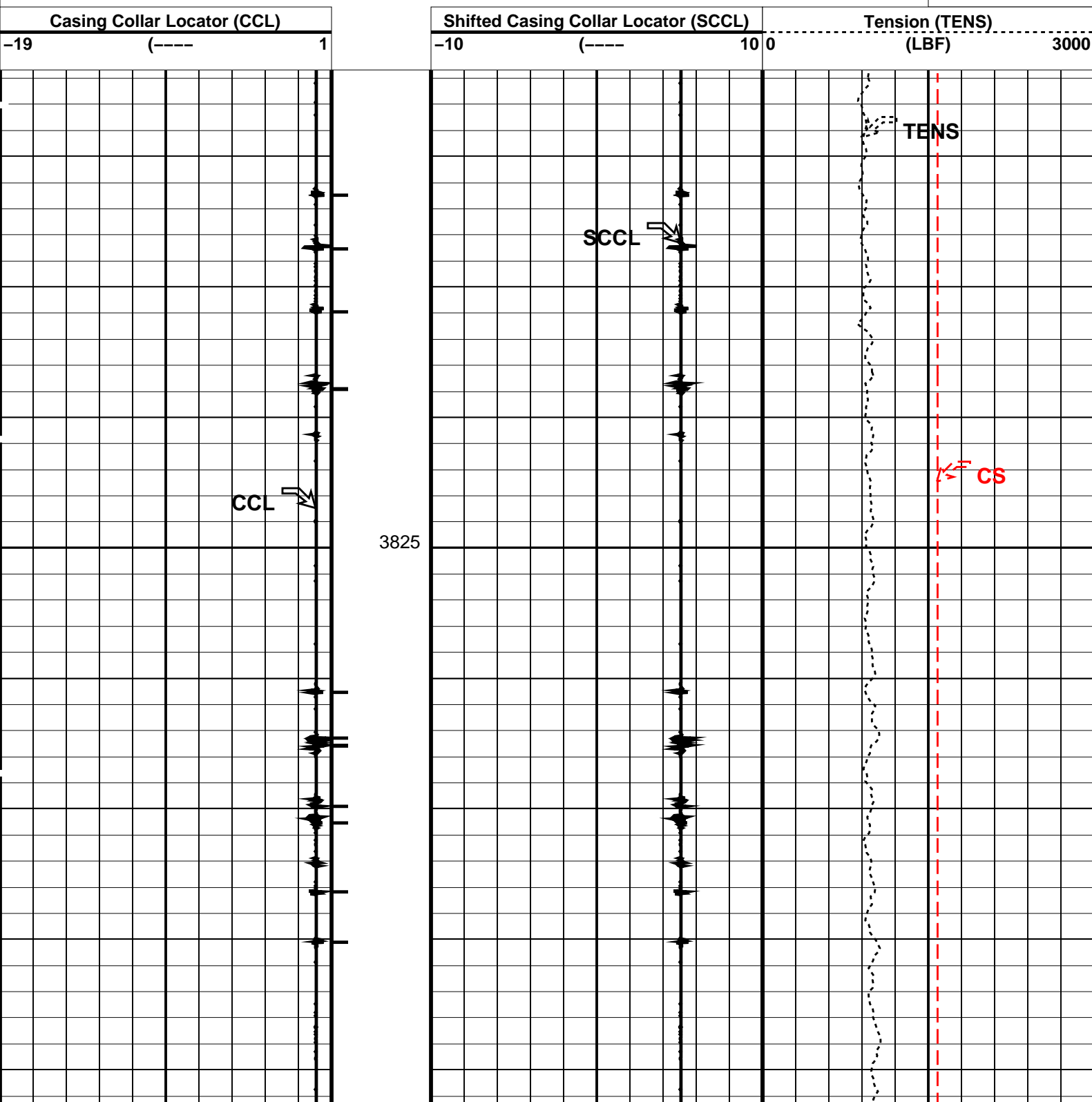
CCL-L 15C0-309 SHM_GUN 15C0-309

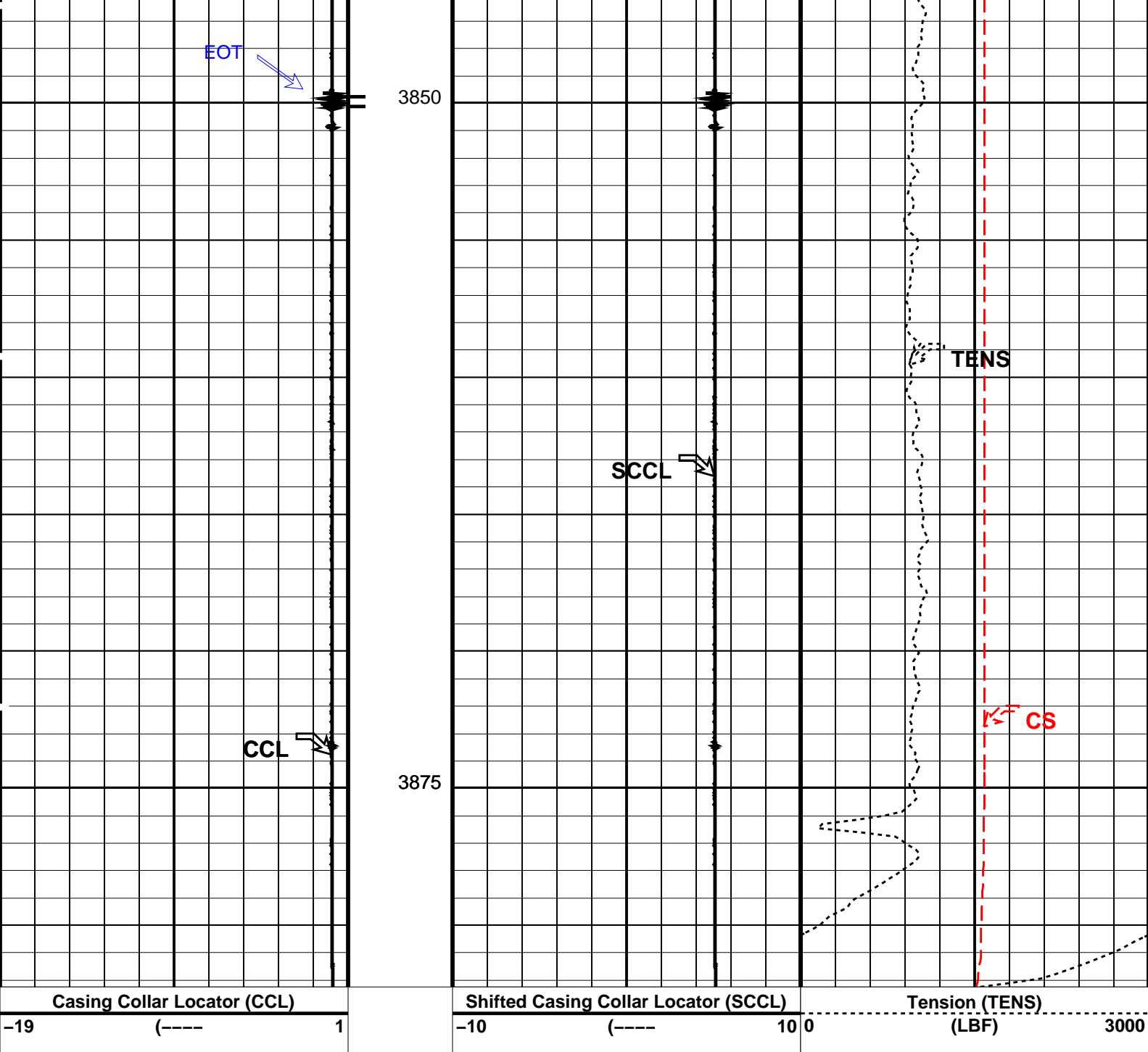
PIP SUMMARY

└─ Casing Collars

Time Mark Every 60 S

Cable Speed (CS)
0 (F/HR) 50000





		Cable Speed (CS)	
		0 (F/HR) 50000	

PIP SUMMARY	
Time Mark Every 60 S	

Parameters		
DLIS Name	Description	Value
CCLD	CCL-L: Casing Collar Locator	
CCLT	CCL reset delay	12 IN
	CCL Detection Level	0.3 V
System and Miscellaneous		
DO	Depth Offset for Playback	0.5 M
PP	Playback Processing	NORMAL

Format: PERFO_1 Vertical Scale: 1:200 Graphics File Created: 06-May-2007 10:59

CCL-L	15C0-309	SHM_GUN	15C0-309
Input DLIS Files			
DEFAULT	PERFO_015LUP	FN:14 PRODUCER	06-May-2007 10:48 3881.8 M 3805.7 M
Output DLIS Files			
DEFAULT	PERFO_016PUP	FN:15 PRODUCER	06-May-2007 10:59

Company:	Esso Australia Pty. Ltd	Schlumberger
Well:	FTA A10	
Field:	Fortescue	
Rig:	175	
Country:	Australia	
Owen's Oil Tools 2 1/8"Magna Bridge plug 2 1/2" PowerCutter 06-05-2007		