

[illegible]

Company: Esso Australia Pty Ltd.

A-20

Well: A-20  
Field: Bream A

Rig : Prod4 / Crane

Country: Australia

2 1/8" Powerjet Perforation  
7" Posiset Plug  
Setting Record

Prod4 / Crane  
Bream A  
Gippsland  
A-20  
Esso Australia Pty Ltd.

LOCATION		
Gippsland		Elev.: K.B. 32.82 m
Basin		G.L. -59 m
Bass Strait		D.F. 32.82 m
Permanent Datum:	M.S.L.	Elev.: 0 m
Log Measured From:	D.F.	32.8 m above Perm. Datum
Drilling Measured From:	D.F.	
State : Victoria	Max. Well Deviation 57 deg	Longitude 147 46'15"E
		Latitude 038 30'04"S

Logging Date	17-Jun-2007				
Run Number	One				
Depth Driller	2235 m				
Schlumberger Depth	2235 m				
Bottom Log Interval	2228 m				
Top Log Interval	2150 m				
Casing Fluid Type	Production Fluids				
Salinity					
Density					
Fluid Level	0 m				
BIT/CASING/TUBING STRING					
Bit Size	8.500 in				
From					
To					
Casing/Tubing Size	7.000 in				
Weight	26 lbm/ft				
Grade	L-80				
From	12.2 m				
To	2309 m				
Maximum Recorded Temperatures	204 degF				
Logger On Bottom	17-Jun-2007		20:21		
Unit Number	Location	889	Prod4 / Ausl		
Recorded By	G Wright & S Gilbert.				
Witnessed By	B White & B Robinson.				

Run 1					
PVT DATA					
Oil Density					
Water Salinity					
Gas Gravity					
Bo					
Bw					
1/Bg					
Bubble Point Pressure					
Bubble Point Temperature					
Solution GOR					
Maximum Deviation					
CEMENTING DATA					
Primary/Squeeze					
Casing String No					
Lead Cement Type					
Volume					
Density					
Water Loss					
Additives					
Tail Cement Type					
Volume					
Density					
Water Loss					
Additives					
Expected Cement Top					
Logging Date					
Run Number					
Depth Driller					
Schlumberger Depth					
Bottom Log Interval					
Top Log Interval					
Casing Fluid Type					
Salinity					
Density					
Fluid Level					
BIT/CASING/TUBING STRING					
Bit Size					
From					
To					
Casing/Tubing Size					
Weight					
Grade					
From					
To					
Maximum Recorded Temperatures					
Logger On Bottom					
Unit Number					
Recorded By					
Witnessed By					

## DEPTH SUMMARY LISTING

Date Created: 13-JUN-2007 13:28:25

### Depth System Equipment

Depth Measuring Device	Tension Device	Logging Cable
Type: IDW-EB Serial Number: 6373 Calibration Date: 4-Jan-2007 Calibrator Serial Number: 9 Calibration Cable Type: 2-23ZT Wheel Correction 1: -2 Wheel Correction 2: -4	Type: PSDS/OSDS Serial Number: 325357 Calibration Date: 10-Jun-2007 Calibrator Serial Number: 1174 Calibration Gain: 0.92 Calibration Offset: 199.00	Type: 2-32ZT Serial Number: 24425 Length: 6449.87 M Conveyance Method: Wireline Rig Type: Rigless

### Depth Control Parameters

Log Sequence:	Subsequent Log In the Well
Reference Log Name:	Solar Composite Log
Reference Log Run Number:	
Reference Log Date:	

### Depth Control Remarks

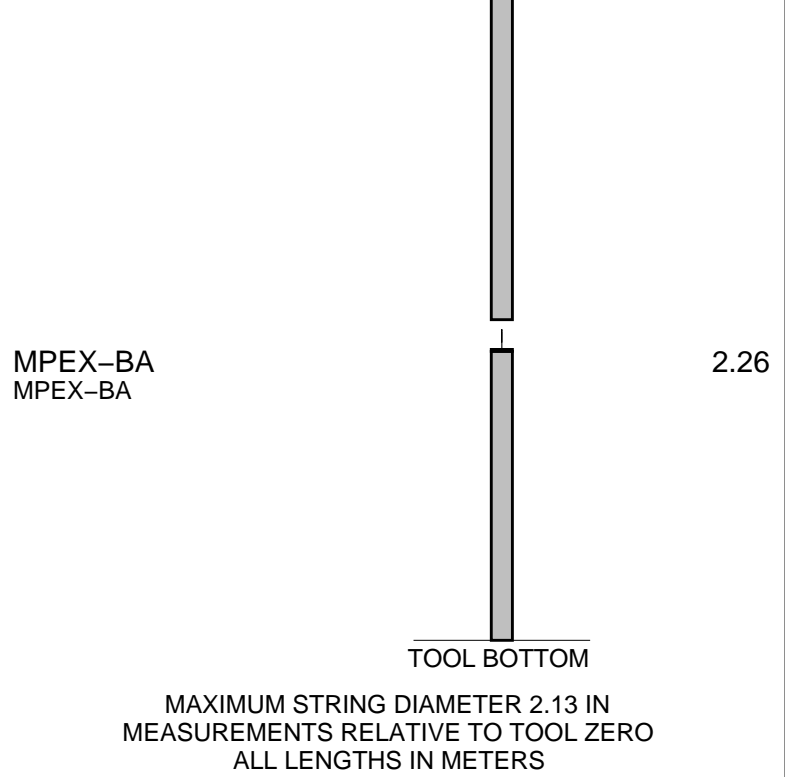
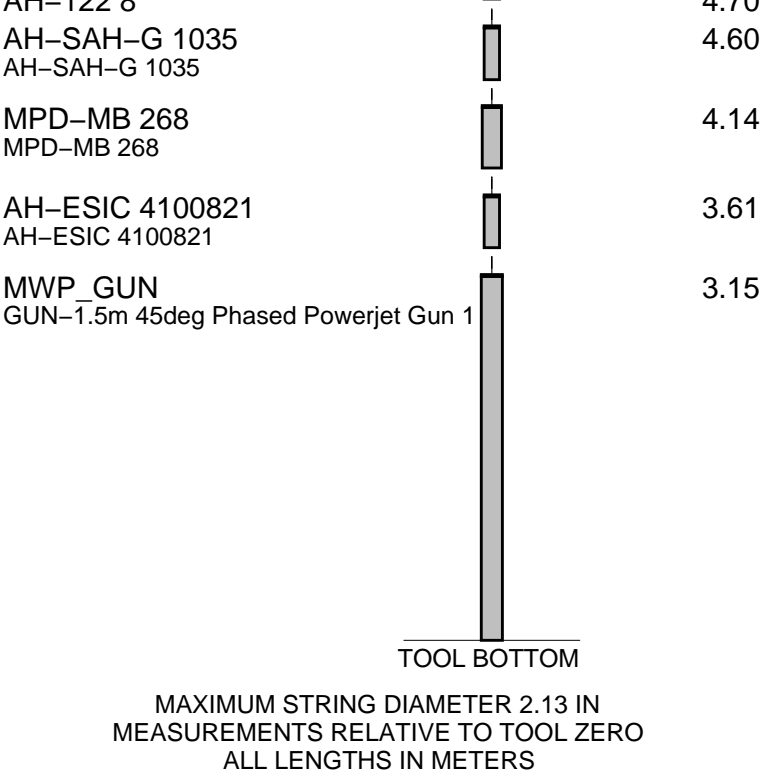
1. IDW used as primary depth control.
2. Z-chart used as secondary backup
3.
4.
5.
6.

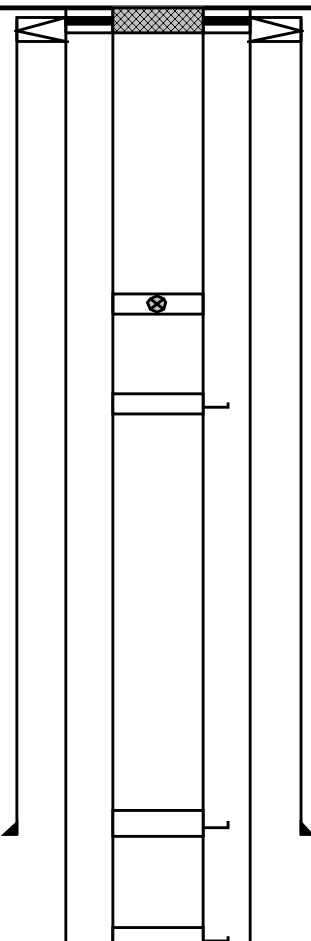
#### DISCLAIMER

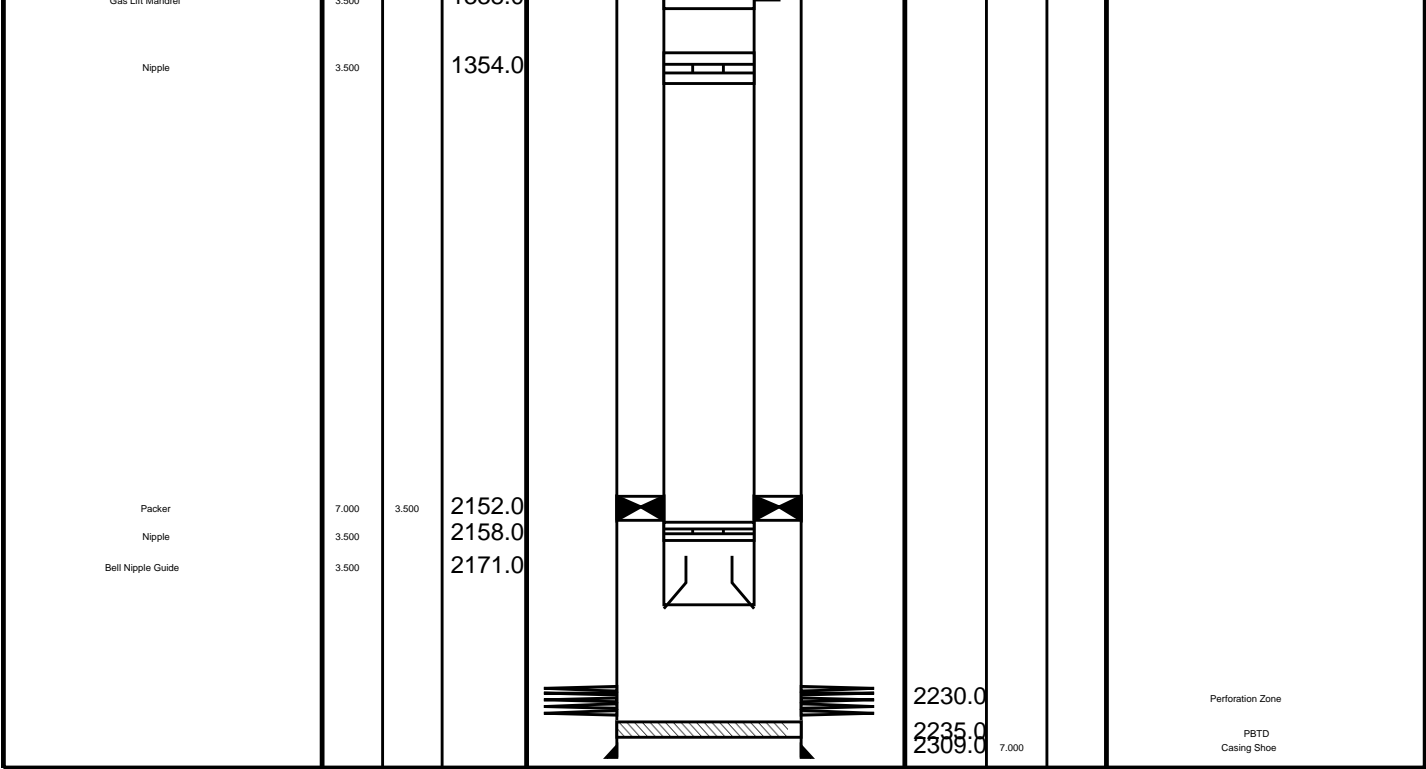
THE USE OF AND RELIANCE UPON THIS RECORDED-DATA BY THE HEREIN NAMED COMPANY (AND ANY OF ITS AFFILIATES, PARTNERS, REPRESENTATIVES, AGENTS, CONSULTANTS AND EMPLOYEES) IS SUBJECT TO THE TERMS AND CONDITIONS AGREED UPON BETWEEN SCHLUMBERGER AND THE COMPANY, INCLUDING: (a) RESTRICTIONS ON USE OF THE RECORDED-DATA; (b) DISCLAIMERS AND WAIVERS OF WARRANTIES AND REPRESENTATIONS REGARDING COMPANY'S USE OF AND RELIANCE UPON THE RECORDED-DATA; AND (c) CUSTOMER'S FULL AND SOLE RESPONSIBILITY FOR ANY INFERENCE DRAWN OR DECISION MADE IN CONNECTION WITH THE USE OF THIS RECORDED-DATA.

OTHER SERVICES1
OS1: RST-C
OS2: Sigma Survey
OS3: .
OS4:
OS5:
REMARKS: RUN NUMBER 1
Log correlated to ExxonMobil composite supplied with logging program.
Maximum well deviation = 57 degrees at 869.3m MDKB.
Objective:Perforate the well using a 1.5m 2 1/8" 45deg Phased Powerjet gun
over the interval 2224m to 2225.5m MDKB. Set 7" Posiset Plug with top of seal
@ 2228m MDKB with approx 1m of Cement on top .
Befor Gun- SBHP: 2611 psia SBHT: 208degf
After Gun- SBHP: 2616psia SBHT: 208degf
Top Shot @ 2224m MDKB

CCL to Top Shot = 4.1m					
CCL Stop Depth = 2219.9m MDKB					
Top of Seal @ 2228m MDKB					
CCL to Top of Seal = 7m					
CCL Stop Depth = 2221m MDKB					
Crew : J Annear,A Hall,P Lawrence,C Shiells.					
RUN 1			RUN 2		
SERVICE ORDER #: PROGRAM VERSION: FLUID LEVEL:			SERVICE ORDER #: PROGRAM VERSION: FLUID LEVEL:		
Ausl07328230 14C0-302 0 m					
LOGGED INTERVAL	START	STOP	LOGGED INTERVAL	START	STOP
EQUIPMENT DESCRIPTION					
RUN 1			RUN 2		
SURFACE EQUIPMENT			SURFACE EQUIPMENT		
MWPM-. 3000			MPBM 81		
DOWNHOLE EQUIPMENT			DOWNHOLE EQUIPMENT		
AH-SWBS-B 731 AH-SWBS-B 731			AH-SWBS-B 731 AH-SWBS-B 731		
12.34			12.20		
AH-SWBS-B 761 AH-SWBS-B 761			AH-SWBS-B 761 AH-SWBS-B 761		
11.65			11.52		
AH-SWBS-B 762 AH-SWBS-B 762			AH-SWBS-B 762 AH-SWBS-B 762		
10.96			10.83		
AH-SWBS-B 763 AH-SWBS-B 763			AH-SWBS-B 763 AH-SWBS-B 763		
10.28			10.14		
MH-SWHS-A 726 MH-SWHS-A 726			MH-SWHS-A 726 MH-SWHS-A 726		
9.59			9.46		
AH-124 1001			CCL Tachomete Cable Cur Head Volt Tension		
9.26			9.13		
MWGT-AA 69 MWPG-AA 69 MWGH-AA 69			TOOL ZERO		
9.06			8.67		
MWPG GR					
2.41					
MWPT-CA 74 MWPB-AA 74 MWPS-AA 74					
8.08					
CCL SMWP Pres SMWP Temp Tension					
TOOL ZERO					
AH-Flex Joint 41 AH-Flex Joint 41					
5.26					
AH 122 8					
4.70					



Production String	(in)		(m)	Well Schematic	(m)	(in)		Casing String
	OD	ID	MD		MD	OD	ID	
Tubing	3.500		11.0		12.9	10.000		Casing String Liner Hanger
Tubing Hanger	7.000	3.500	10.0		12.2	10.750	7.000	
Shut-in Valve	3.500		450.0					
Gas Lift Mandrel	3.500		595.0					
Gas Lift Mandrel	3.500		1154.0		1123.1	10.750		
Gas Lift Mandrel	3.500		1338.0					Casing Shoe



Schlumberger

Cement Dump Pass

MAXIS Field Log

Output DLIS Files

DEFAULT PERFO\_060LUP FN:59 PRODUCER 18-Jun-2007 05:09 2215.3 M 2149.1 M

OP System Version: 14C0-302

MCM

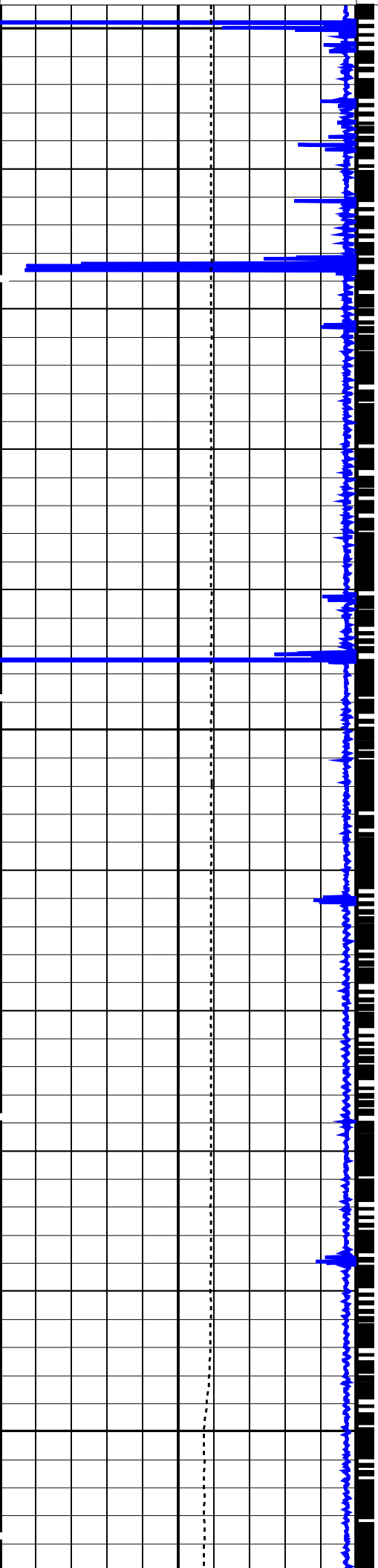
SHM\_GUN 14C0-302 CCL-L 14C0-302

PIP SUMMARY

└─ Casing Collars

Time Mark Every 60 S

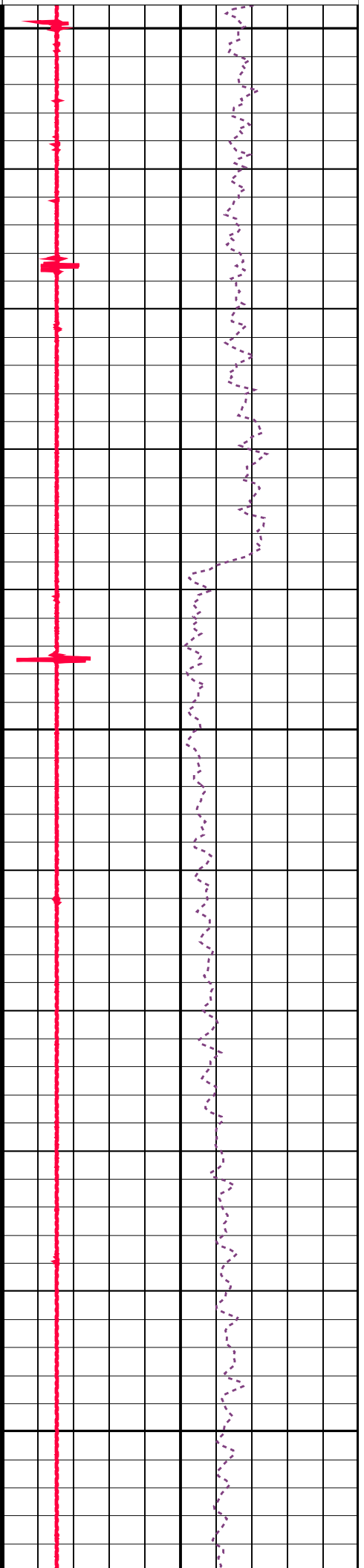
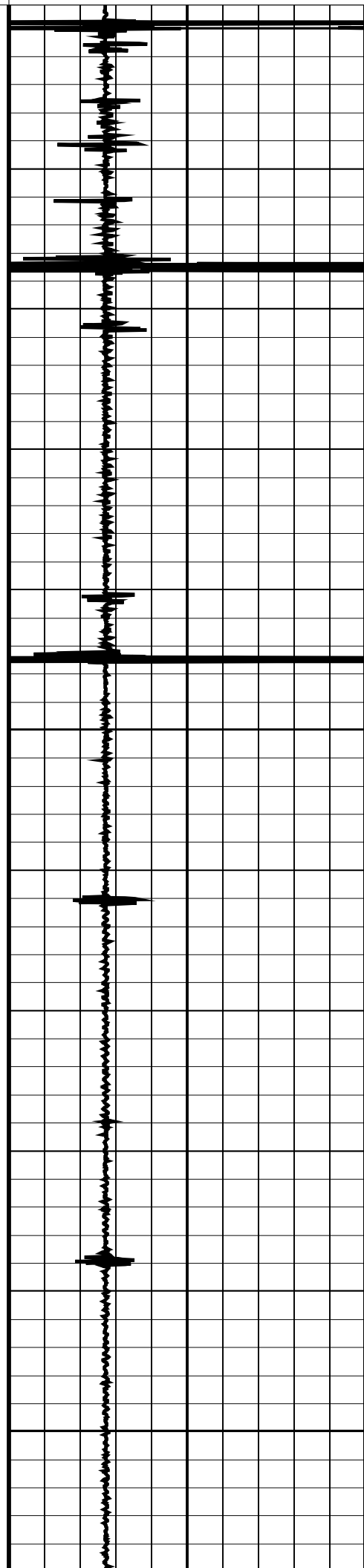
Casing Collar Locator (CCL)		Tension (TENS)	
-19	(----	0	(LBF) 1000
Cable Speed (CS)		Shifted Casing Collar Locator (SCCL)	
(F/HR) 5000		-10	(----
		10	-3 (----
			17

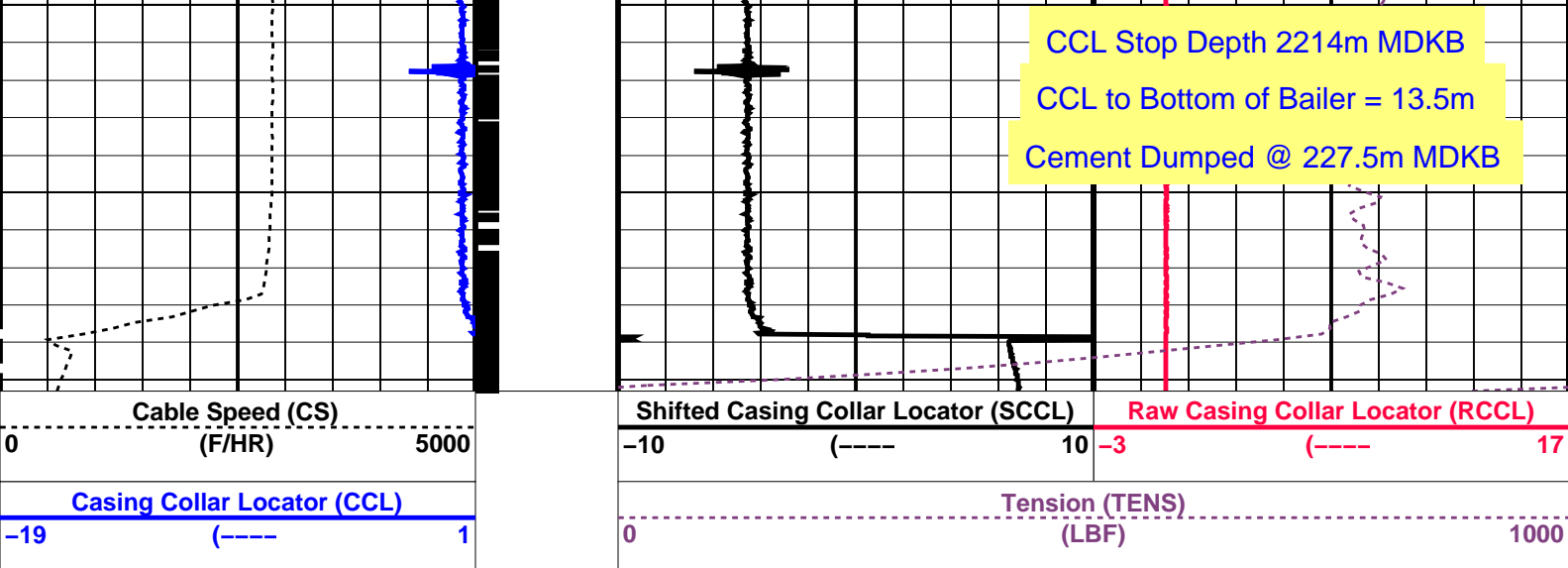


2150

2175

2200





PIP SUMMARY

Time Mark Every 60 S


Casing Collars

Parameters		
DLIS Name	Description	Value
CCLD	CCL-L: Casing Collar Locator	12 IN
CCLT	CCL reset delay	0.3 V
	CCL Detection Level	

Format: PERFO Vertical Scale: 1:200 Graphics File Created: 18-Jun-2007 05:09

OP System Version: 14C0-302			
MCM			
SHM_GUN	14C0-302	CCL-L	14C0-302

Output DLIS Files			
DEFAULT	PERFO_060LUP	FN:59 PRODUCER	18-Jun-2007 05:09



Water Dump Pass

MAXIS Field Log

Output DLIS Files					
DEFAULT	PERFO_057LUP	FN:56 PRODUCER	18-Jun-2007 03:30	2215.7 M	2149.6 M

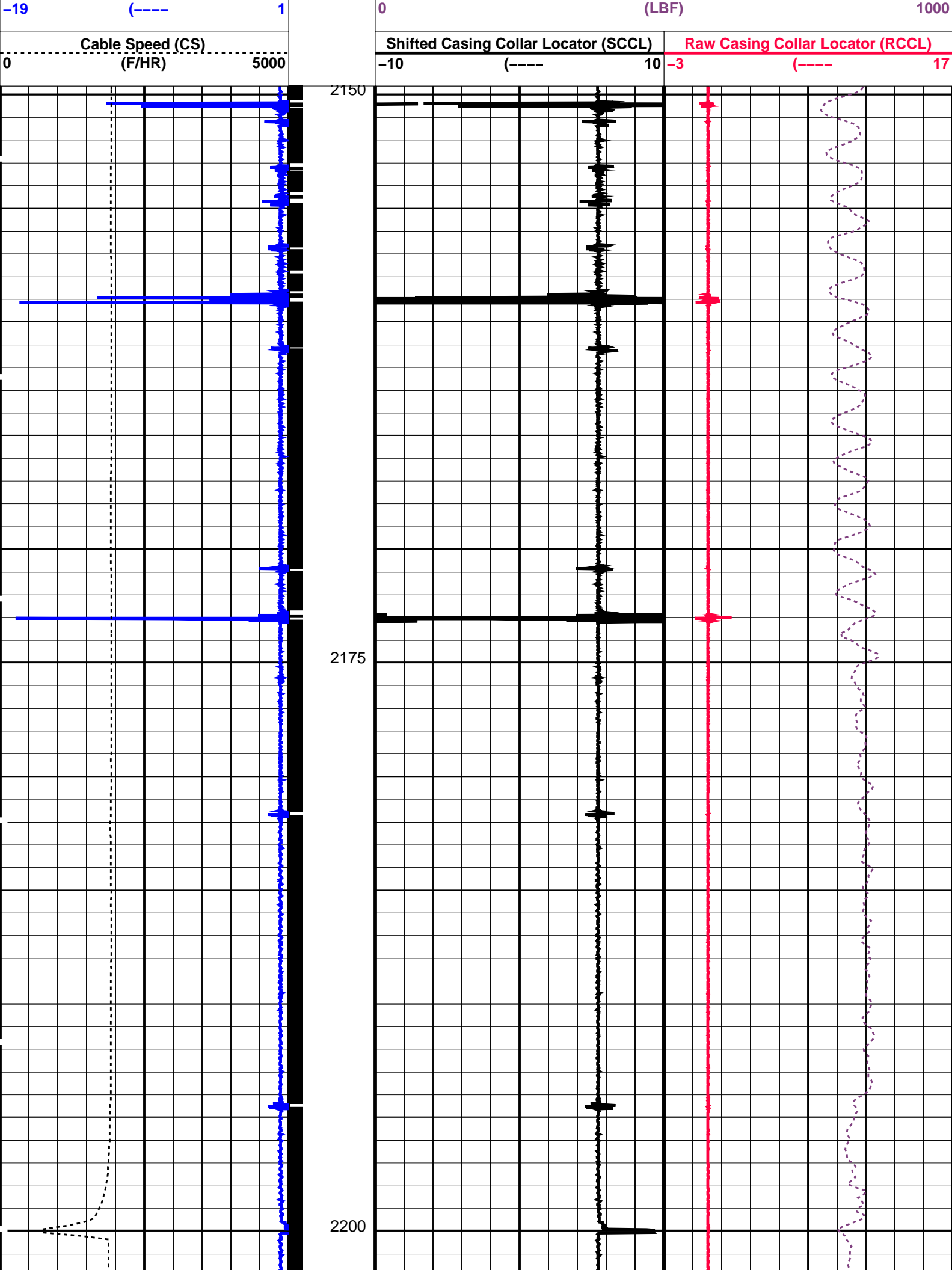
OP System Version: 14C0-302		
MCM		
SHM_GUN	14C0-302	CCL-L 14C0-302

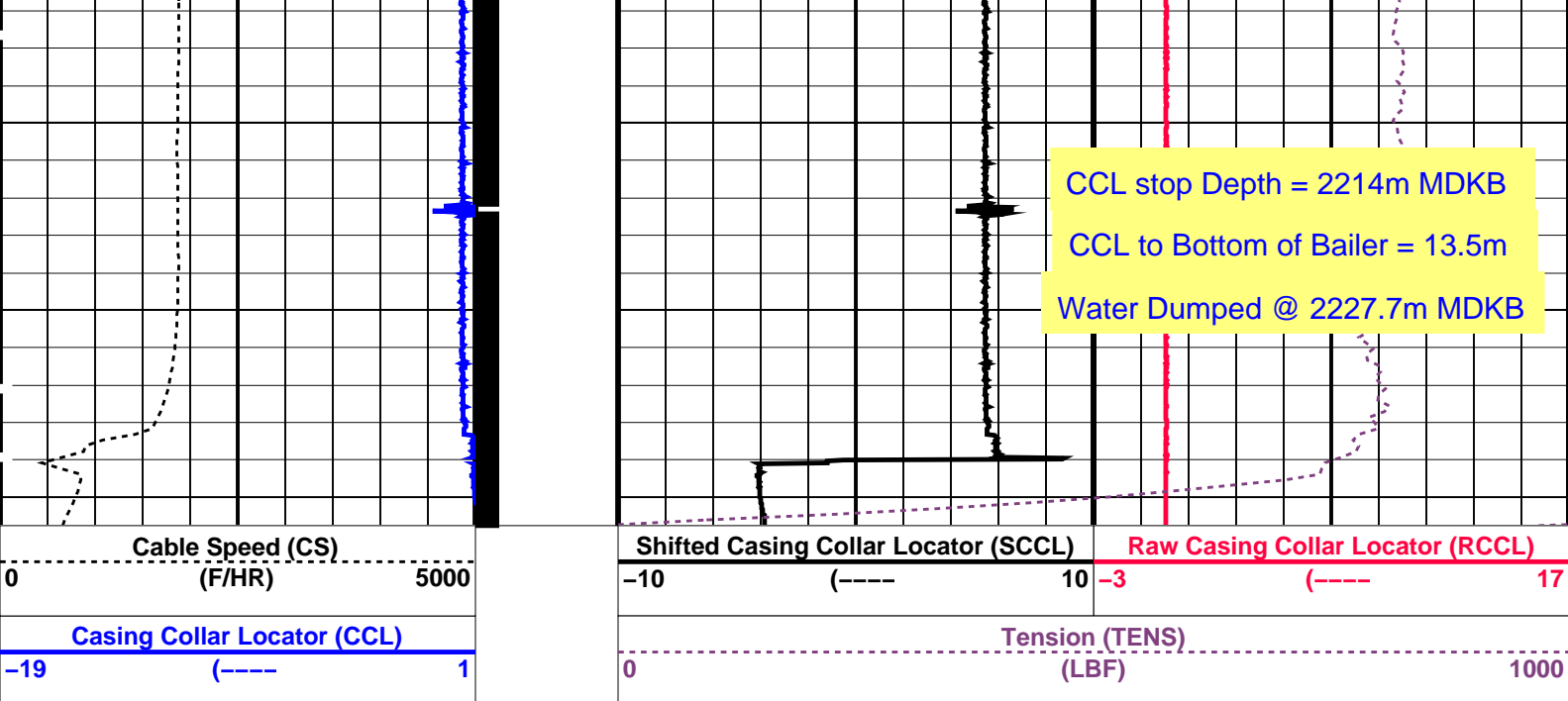
PIP SUMMARY

Time Mark Every 60 S

Casing Collars







### PIP SUMMARY

← Casing Collars

Time Mark Every 60 S

### Parameters

DLIS Name	Description	Value
CCLD	CCL-L: Casing Collar Locator	12 IN
CCLT	CCL reset delay	0.3 V
	CCL Detection Level	

Format: PERFO Vertical Scale: 1:200 Graphics File Created: 18-Jun-2007 03:30

OP System Version: 14C0-302  
MCM

SHM\_GUN 14C0-302 CCL-L 14C0-302

### Output DLIS Files

DEFAULT PERFO\_057LUP FN:56 PRODUCER 18-Jun-2007 03:30

**Schlumberger**

7" Posiset Plug Setting  
@ 2228m MDKB

MAXIS Field Log

### Output DLIS Files

DEFAULT MPBT\_048LUP FN:47 PRODUCER 18-Jun-2007 00:53

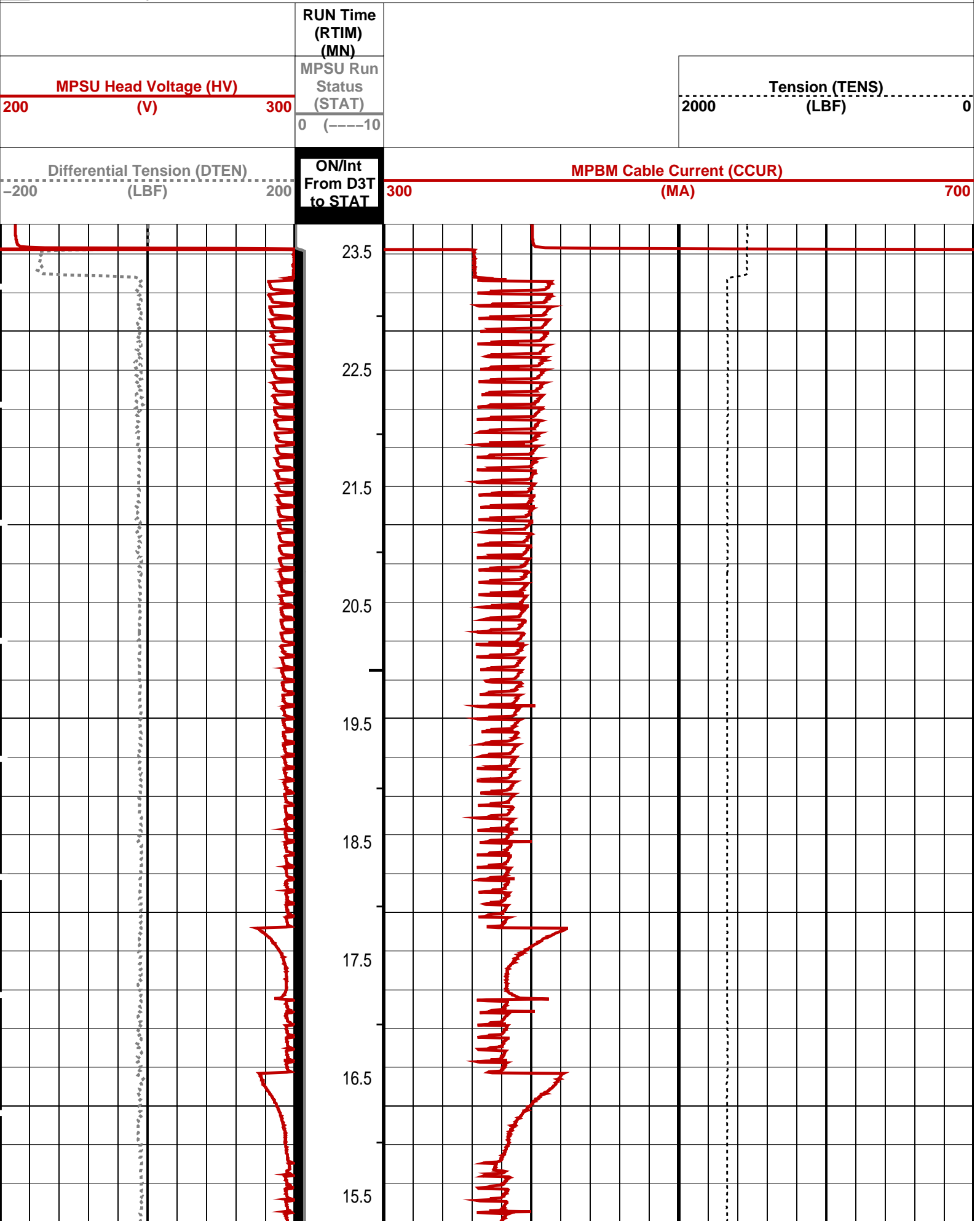
OP System Version: 14C0-302  
MCM

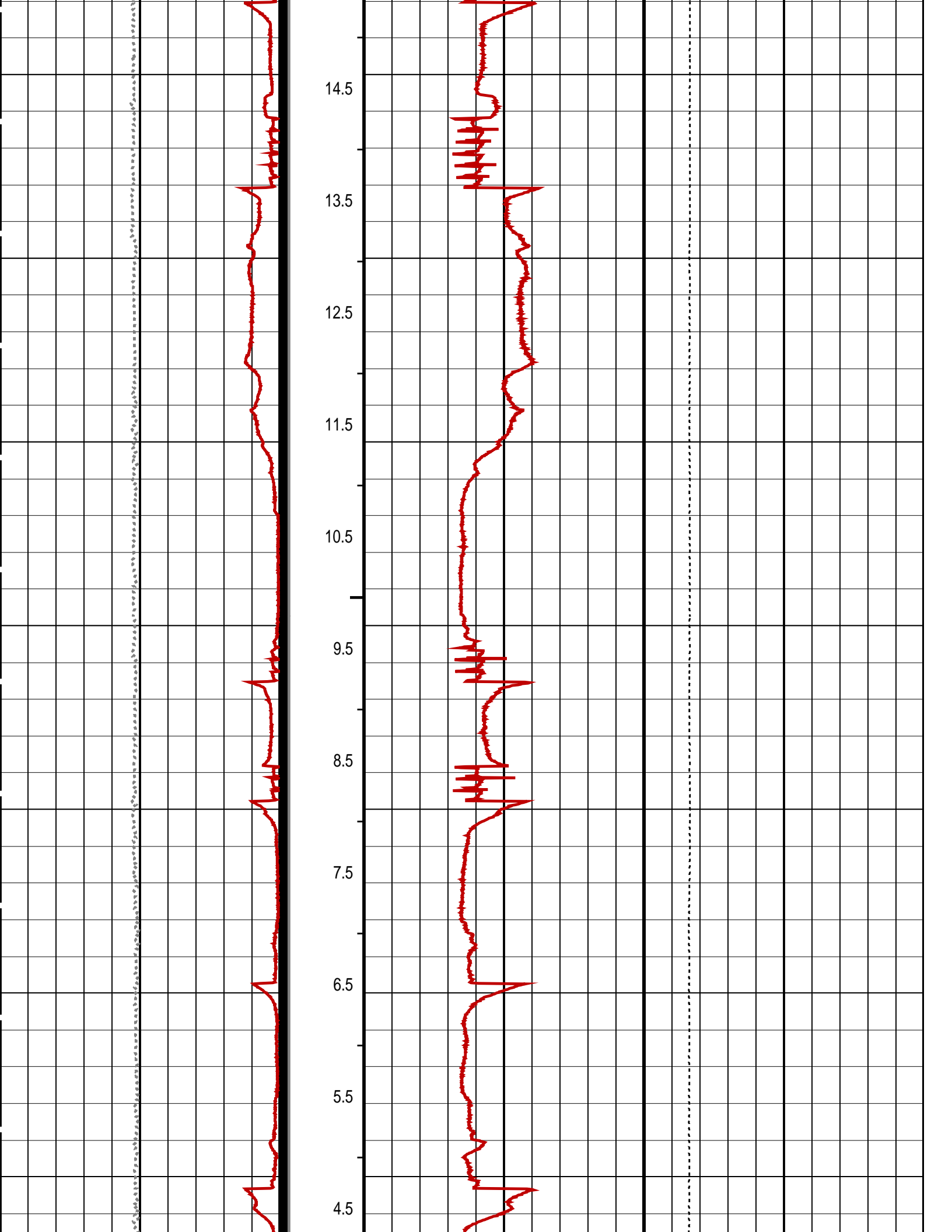
MPEX-BA 14C0-302 MPSU-CA 14C0-302  
CCL-L 14C0-302

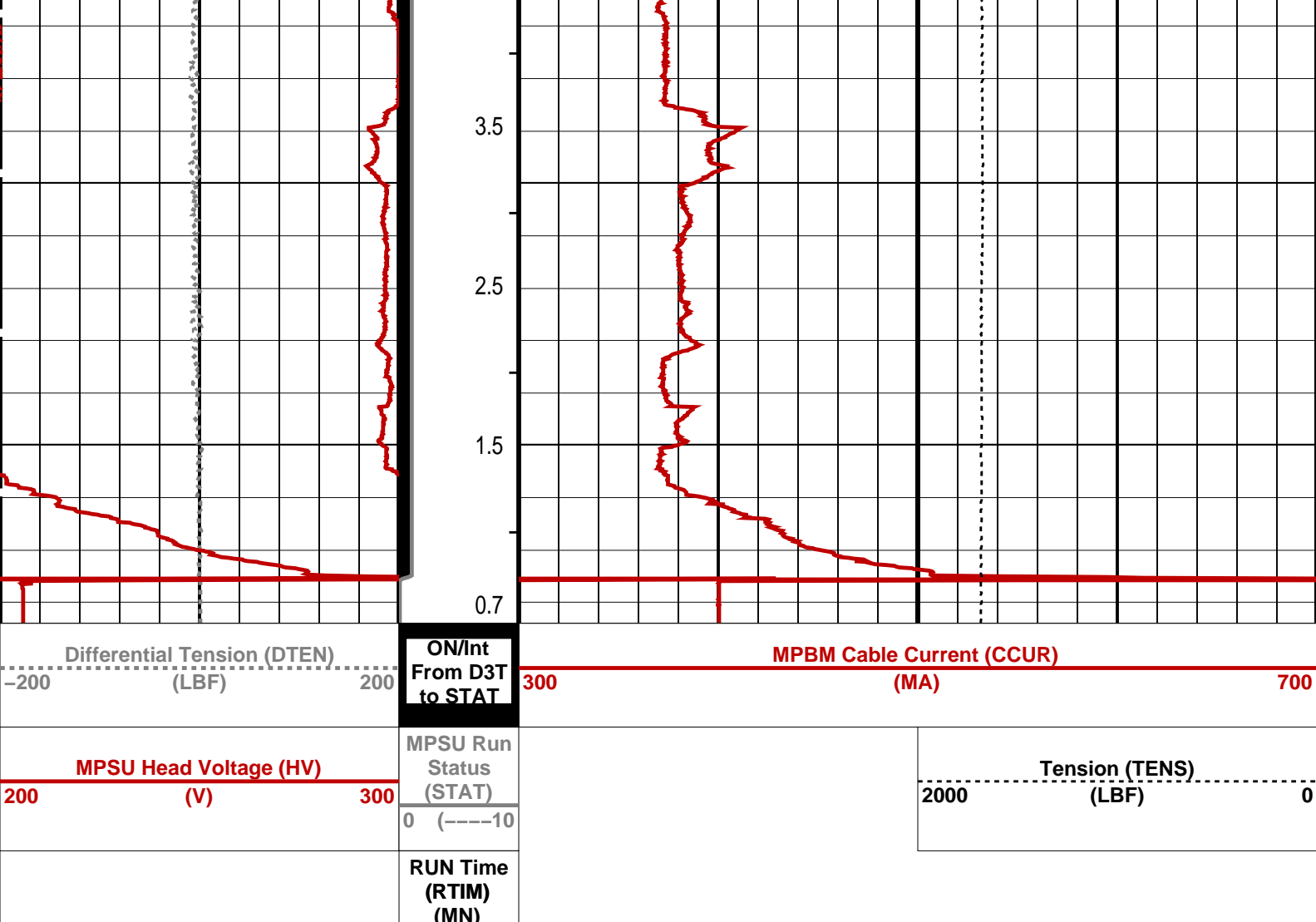
# PIP SUMMARY

↳ MPSU Run Time Every 1 MN  
 ↳ MPSU Run Time Every 10 MN

■ Time Mark Every 60 S







PIP SUMMARY

↓ MPSU Run Time Every 1 MN

→ MPSU Run Time Every 10 MN

Time Mark Every 60 S

Parameters		
DLIS Name	Description	Value
MPSU-CA: MECHANICAL PLUGBACK SETTING UNIT		
IPUMP	Intensifier Pump	TRUE
Format: MPBT Vertical Scale: 1:600		Graphics File Created: 18-Jun-2007 00:53
OP System Version: 14C0-302		
MCM		
MPEX-BA	14C0-302	MPSU-CA 14C0-302
CCL-L	14C0-302	
Output DLIS Files		
DEFAULT	MPBT_048LUP	FN:47 PRODUCER 18-Jun-2007 00:53



Log Away From  
Plug Setting

Output DLIS Files

DEFAULT MPBT\_049LUP FN:48 PRODUCER 18-Jun-2007 01:19

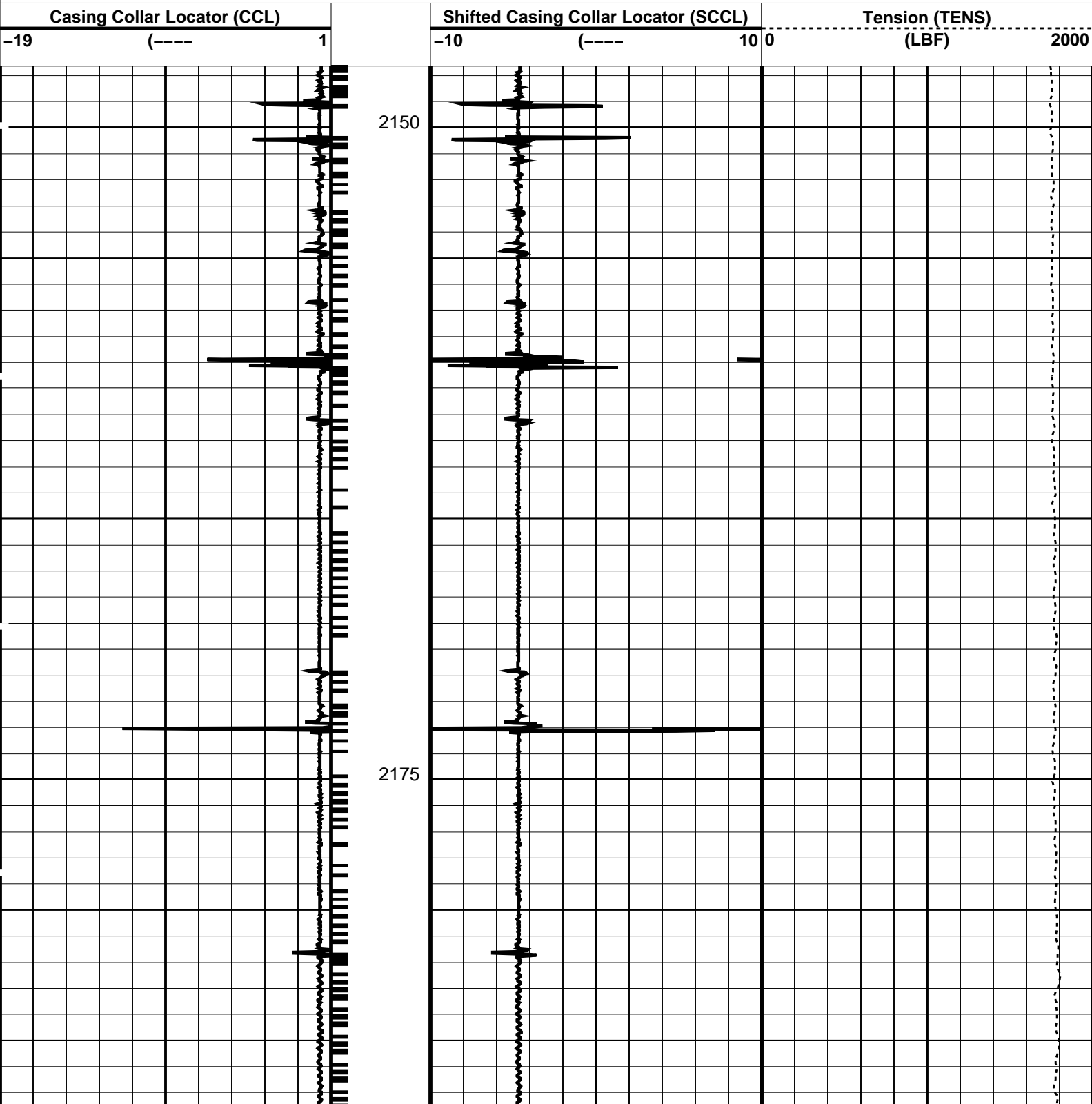
OP System Version: 14C0-302  
MCM

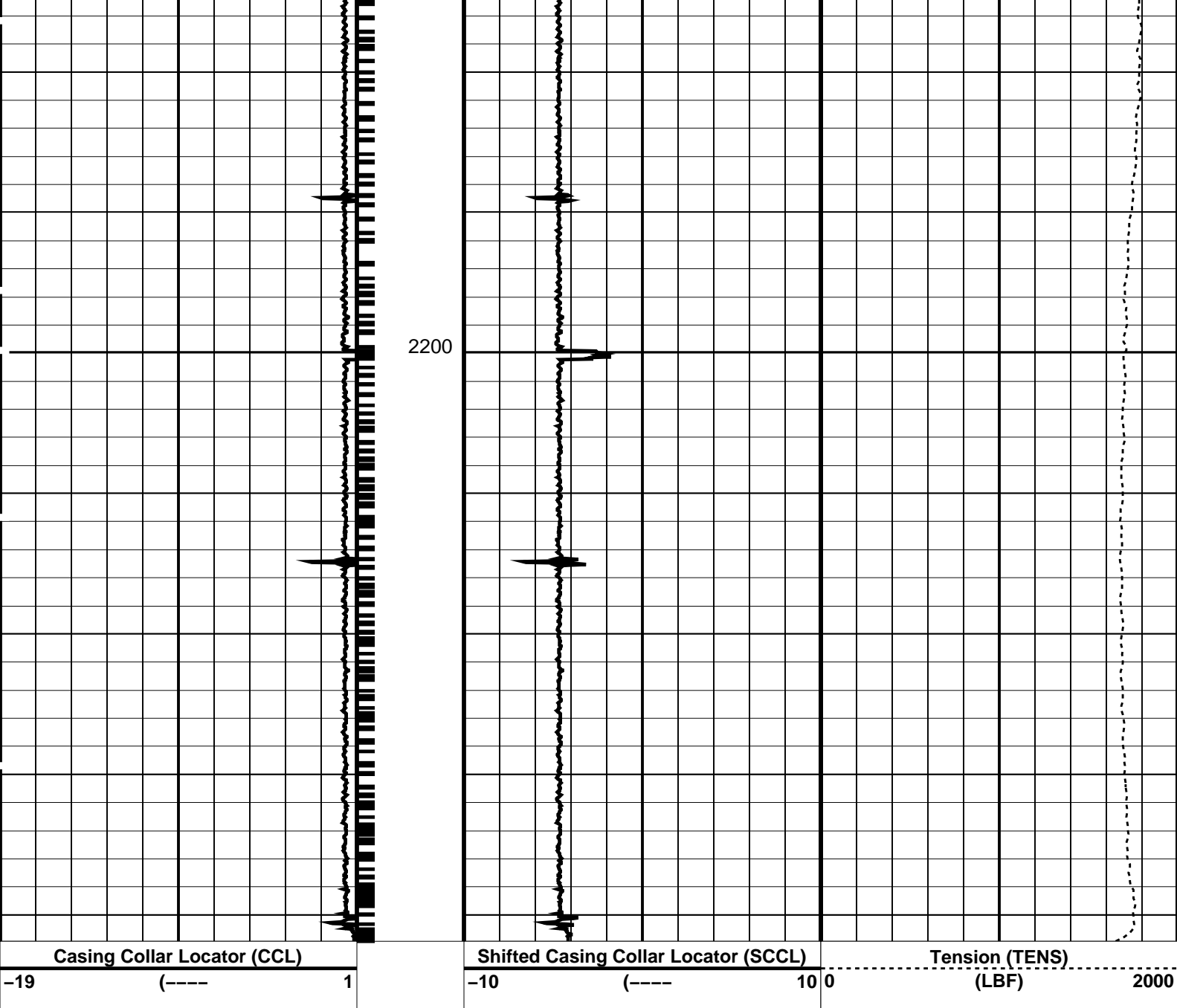
MPEX-BA 14C0-302 MPSU-CA 14C0-302  
CCL-L 14C0-302

PIP SUMMARY

└─ Casing Collars

Time Mark Every 60 S





PIP SUMMARY

└─ Casing Collars

Time Mark Every 60 S

Parameters

DLIS Name	Description	Value
CCLD	CCL-L: Casing Collar Locator	12 IN
CCLT	CCL reset delay	0.3 V
	CCL Detection Level	

Format: PERFO      Vertical Scale: 1:200

Graphics File Created: 18-Jun-2007 01:19

OP System Version: 14C0-302

MCM

MPEX-BA	14C0-302	MPSU-CA	14C0-302
CCL-L	14C0-302		

Output DLIS Files

DEFAULT	MPBT_049LUP	FN:48	PRODUCER	18-Jun-2007 01:19
---------	-------------	-------	----------	-------------------



Plug Correlation Pass

MAXIS Field Log

Output DLIS Files

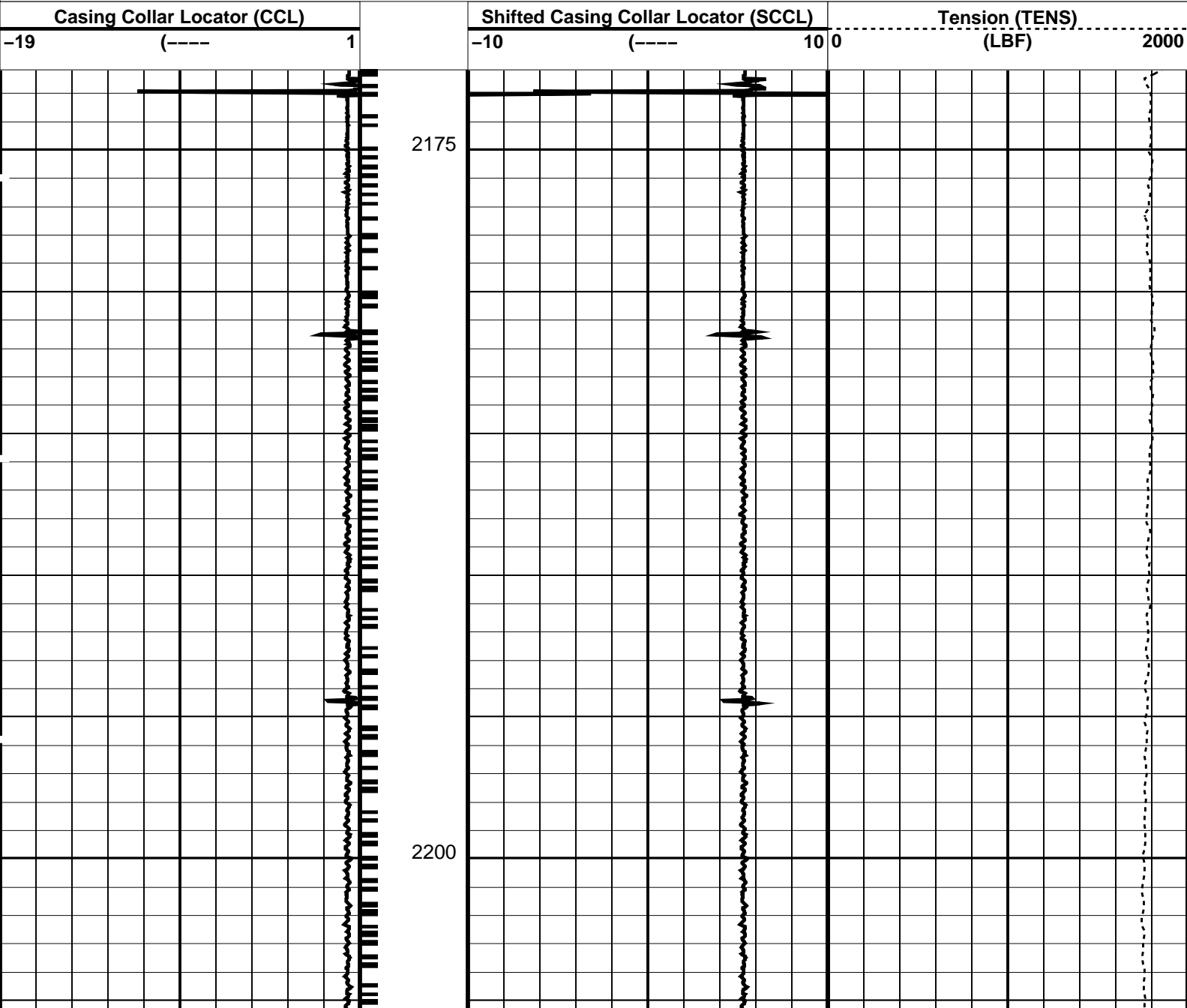
DEFAULT MPBT\_046LUP FN:45 PRODUCER 18-Jun-2007 00:39 2209.3 M 2172.2 M

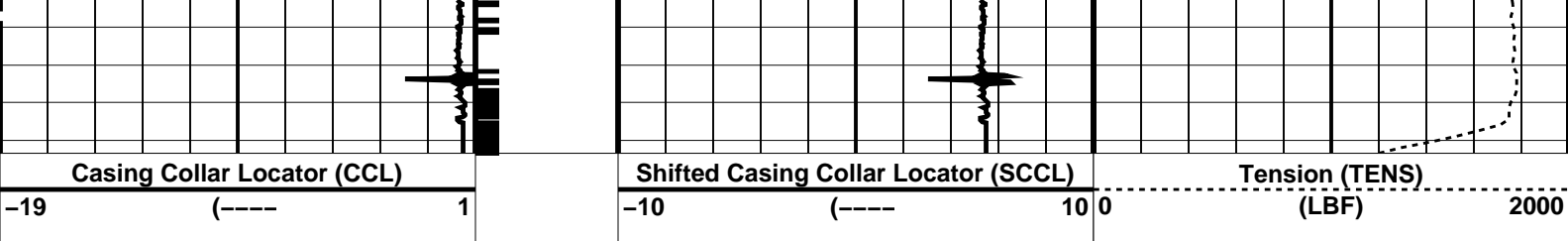
OP System Version: 14C0-302  
MCM

MPEX-BA 14C0-302 MPSU-CA 14C0-302  
CCL-L 14C0-302

PIP SUMMARY

Time Mark Every 60 S Casing Collars






PIP SUMMARY  
Time Mark Every 60 S  
Casing Collars

Parameters		
DLIS Name	Description	Value
CCL-L: Casing Collar Locator		
CCLD	CCL reset delay	12 IN
CCLT	CCL Detection Level	0.3 V

Format: PERFO    Vertical Scale: 1:200    Graphics File Created: 18-Jun-2007 00:39

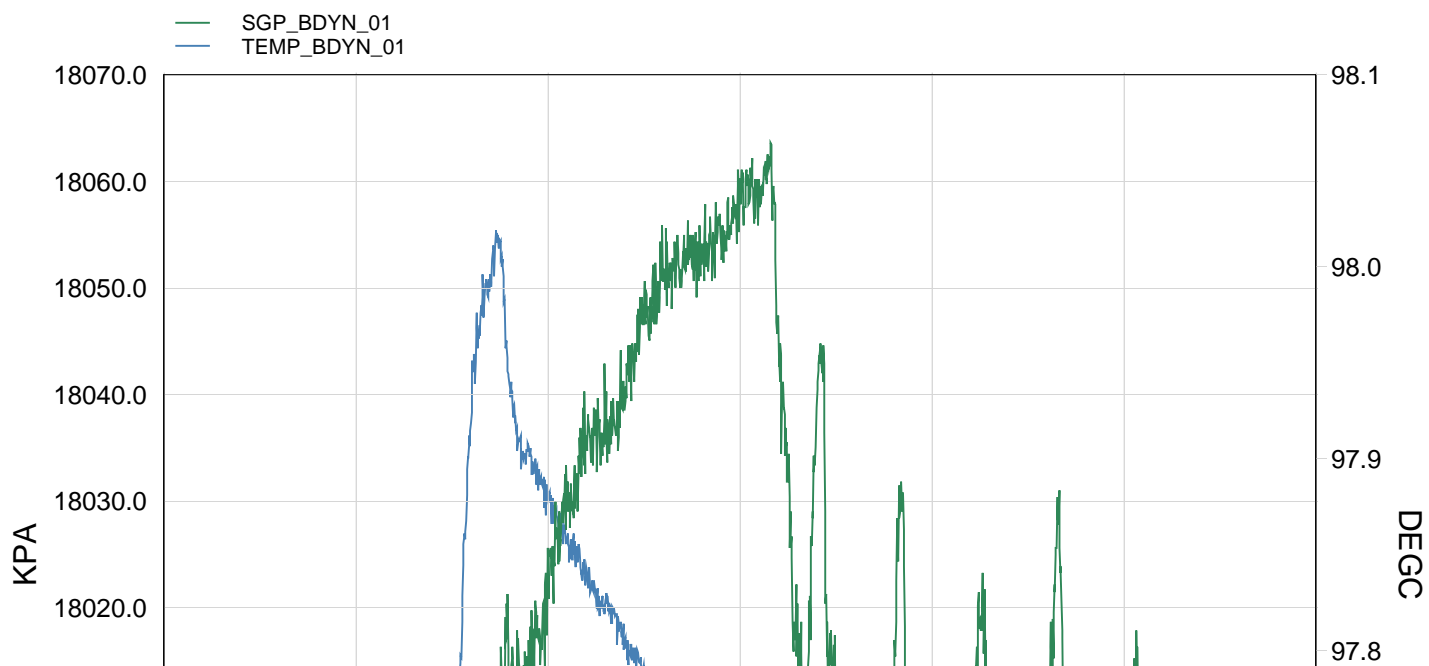
OP System Version: 14C0-302			
MCM			
MPEX-BA	14C0-302	MPSU-CA	14C0-302
CCL-L	14C0-302		

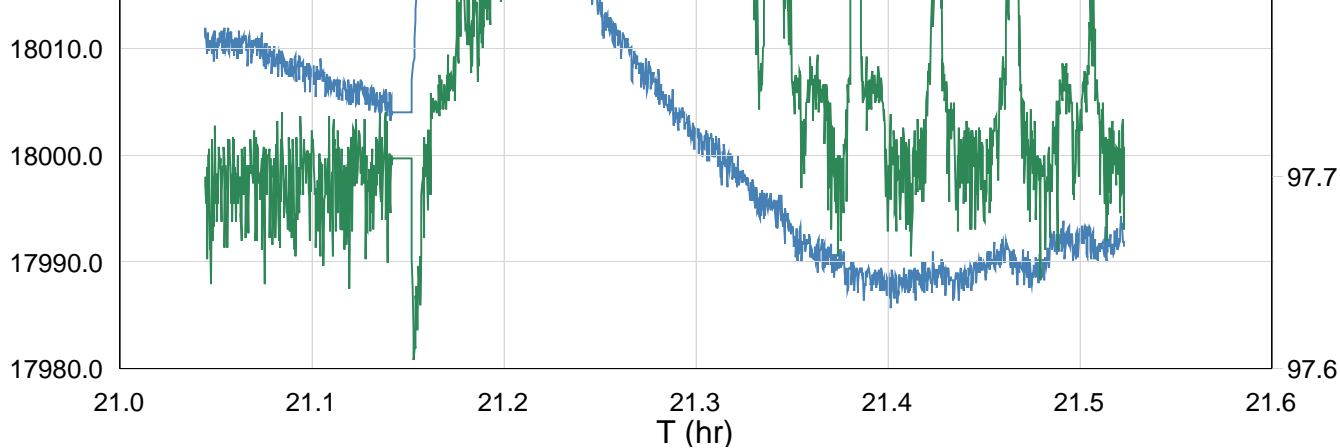
Output DLIS Files			
DEFAULT	MPBT_046LUP	FN:45	PRODUCER 18-Jun-2007 00:39



Gun # 1 Fired @  
2224m to 2225.5m MDKB

MAXIS Field Log





TIME	TEMP_MWPT_S	SGPA_SL
------	-------------	---------

4740.0	207.79	2610.961
4680.0	207.79	2611.220
4620.0	207.79	2609.398
4560.0	207.78	2614.571
4500.0	207.77	2610.604
4440.0	207.76	2611.284
4380.0	207.76	2611.013
4320.0	207.76	2610.428
4260.0	207.77	2614.226
4200.0	207.80	2611.621
4140.0	207.81	2612.224
4080.0	207.83	2612.439
4020.0	207.87	2619.575
3960.0	207.89	2618.964
3900.0	207.93	2618.416
3840.0	207.98	2618.525
3780.0	208.02	2617.712
3720.0	208.08	2616.312
3660.0	208.13	2615.271
3600.0	208.18	2613.607
3540.0	208.26	2612.397
3480.0	208.37	2611.441
3420.0	207.92	2610.647
3360.0	207.94	2610.608
3300.0	207.94	2609.752
3240.0	207.95	2610.489
3180.0	207.96	2610.076
3120.0	207.98	2610.471
3060.0	207.99	2609.618

**Schlumberger**

Gun Shoot Pass

# Output DLIS Files

DEFAULT      PERFO\_031LUP      FN:30      PRODUCER      17-Jun-2007 21:00      2224.4 M      2143.4 M

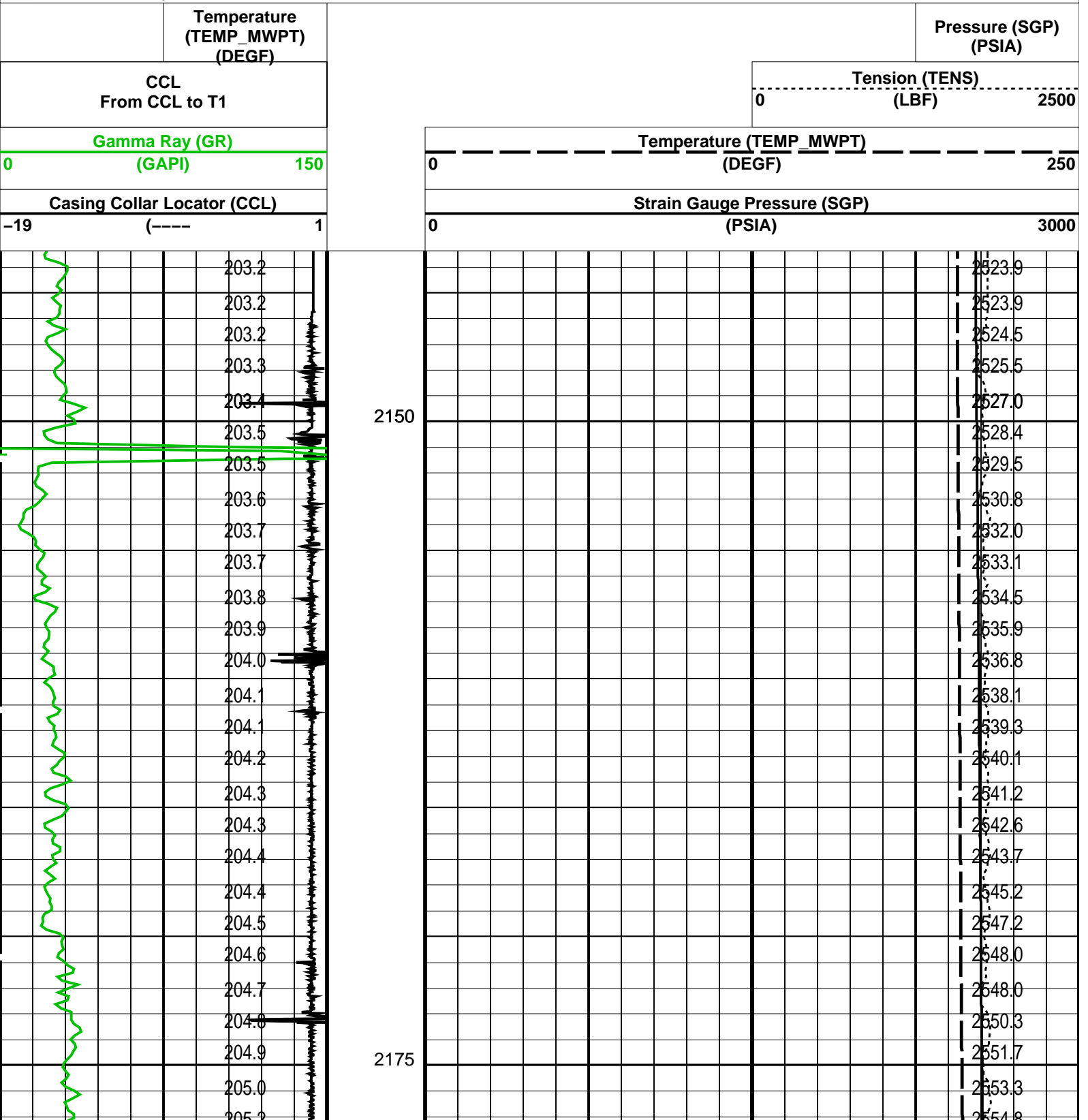
## OP System Version: 14C0-302

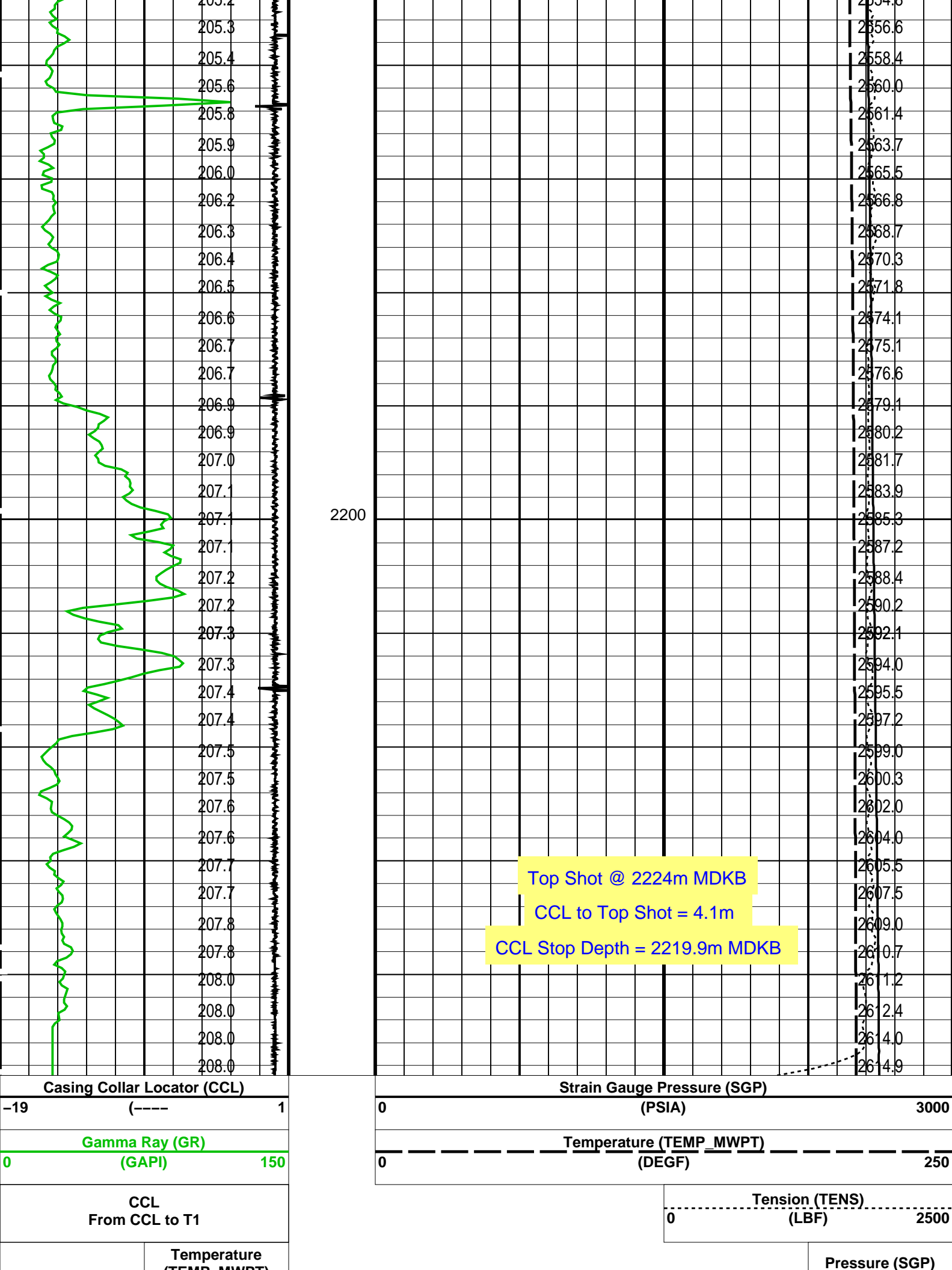
MCM

MWP\_GUN      14C0-302      MWPT-CA      14C0-302  
 MWGT-AA      14C0-302

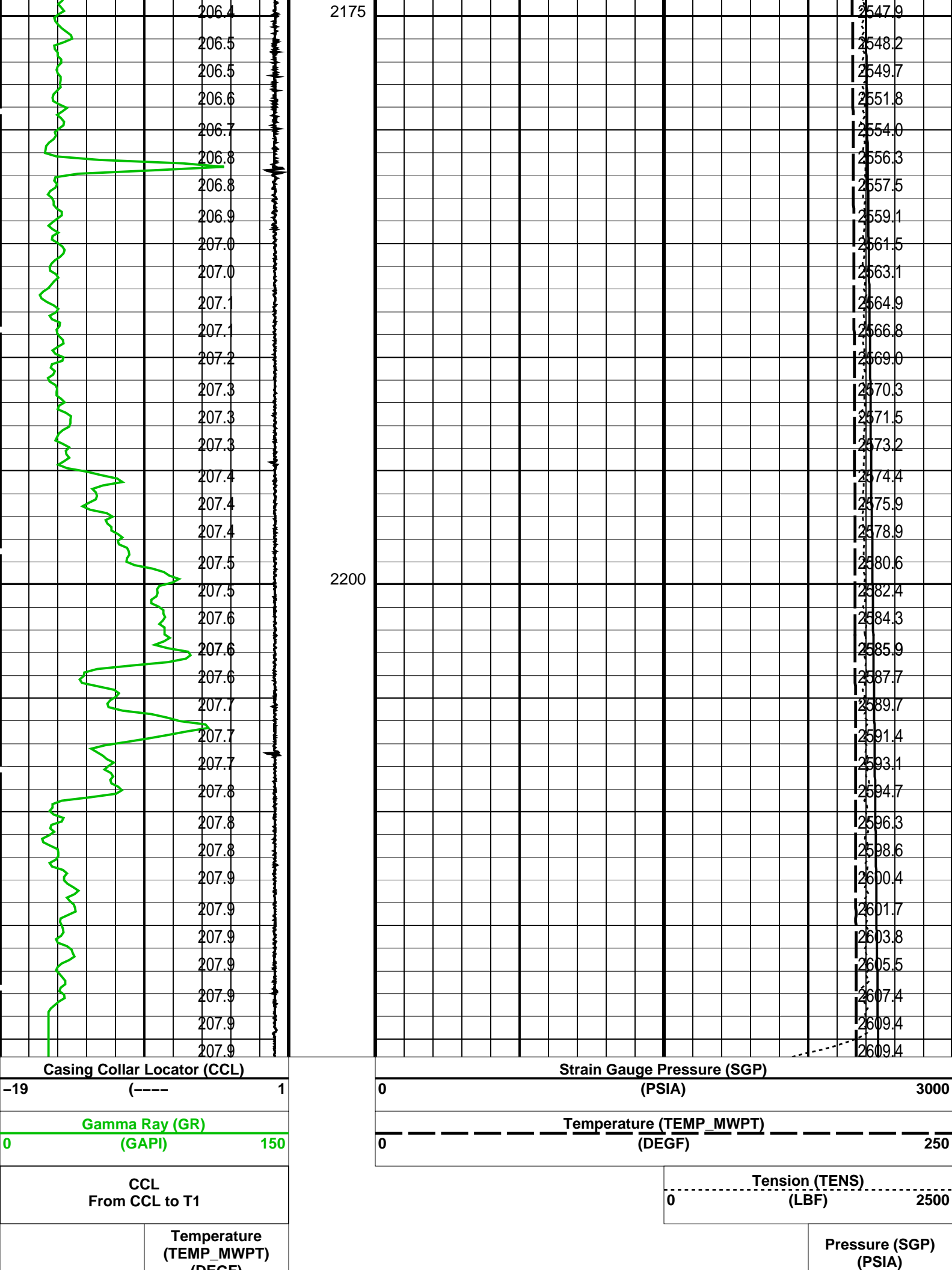
### PIP SUMMARY

Time Mark Every 60 S





		Temperature (TEMP_MWPT) (DEGF)					Pressure (SGP) (PSIA)
CCL From CCL to T1					Tension (TENS) (LBF)		
Gamma Ray (GR) (GAPI)			Temperature (TEMP_MWPT) (DEGF)				
Casing Collar Locator (CCL) (----			Strain Gauge Pressure (SGP) (PSIA)				
0	150		0	2500	0	3000	
-19	1		0	3000	0	3000	
		206.2					2043.1
		206.2					2543.1
		206.2					2543.7
		206.3					2545.9



**Time Mark Every 60 S**

## Parameters

DLIS Name	Description	Value
MWPT-CA: MEASUREMENT WHILE PERFORATING TOOL		
DEVI_FL_CORR	Deviation Angle for Flow Line Correction	0 DEG
FLD	Flow Line Density	1 G/C3
MWPT_NULL_SOURCE	MWPT NULL Temperature Source	TEMS
MWPT_NULL_TEMP	MWPT NULL Temperature	0.0 DEGC

**Format: MWP      Vertical Scale: 1:200      Graphics File Created: 17-Jun-2007 20:47**

**OP System Version: 14C0-302**

## MCM

MWP_GUN	14C0-302	MWPT-CA	14C0-302
MWGT-AA	14C0-302		

## Output DLIS Files

DEFAULT      PERFO\_029LUP      FN:28      PRODUCER      17-Jun-2007 20:47

# Schlumberger

# Dummy Plug

MAXIS Field Log

**Company: Esso Australia Pty Ltd.**

Well: A-20

## Input DLIS Files

DEFAULT	PSP 019LUP	FN:18	PRODUCER	17-Jun-2007 17:15	2235.1 M	2129.9 M
---------	------------	-------	----------	-------------------	----------	----------

## Output DLIS Files

DEFAULT	PSP 020PUP	FN:19	PRODUCER	17-Jun-2007 17:27	2237.8 M	2130.6 M
---------	------------	-------	----------	-------------------	----------	----------

**OP System Version: 14C0-302**

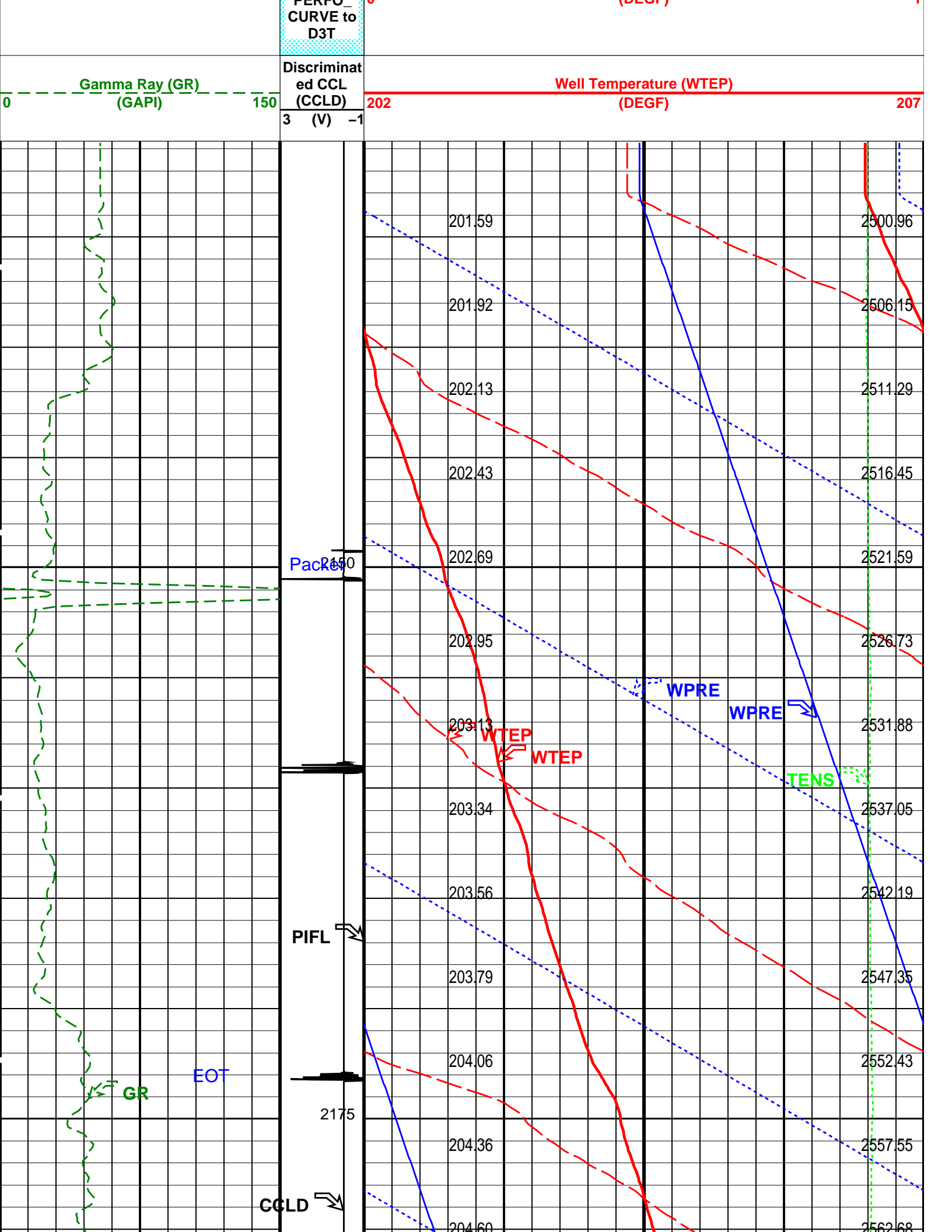
## MCM

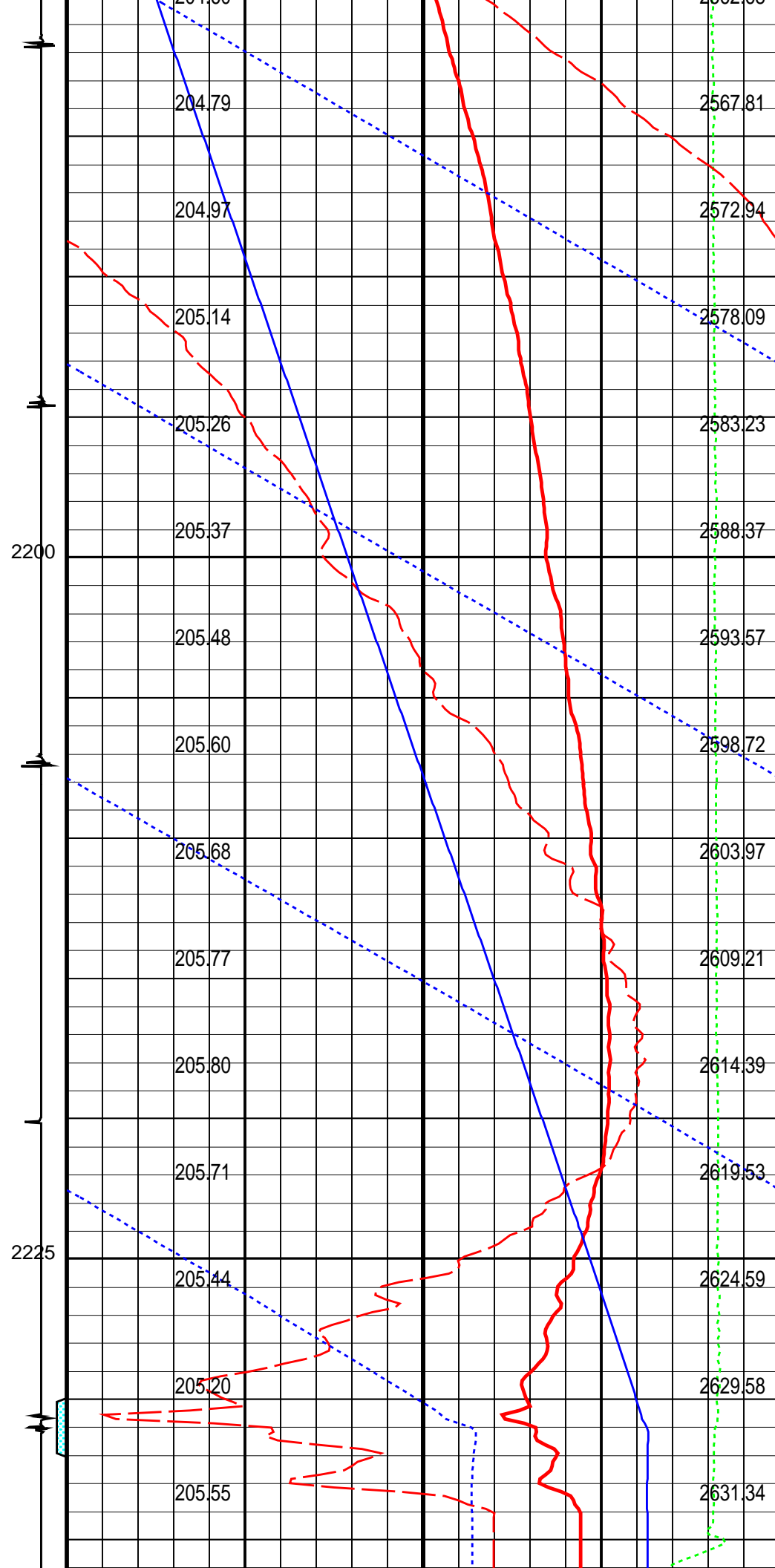
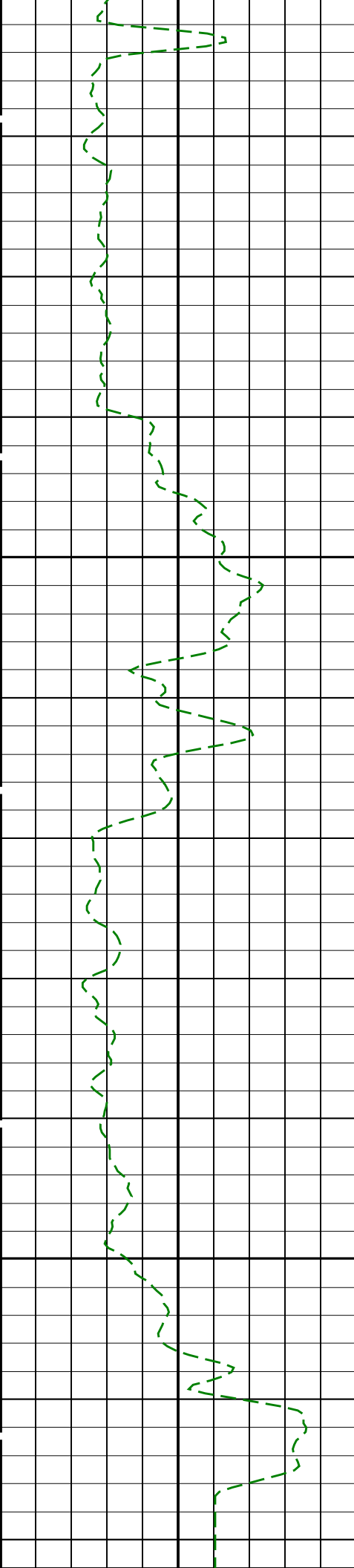
PSPT-A/B 14C0-302

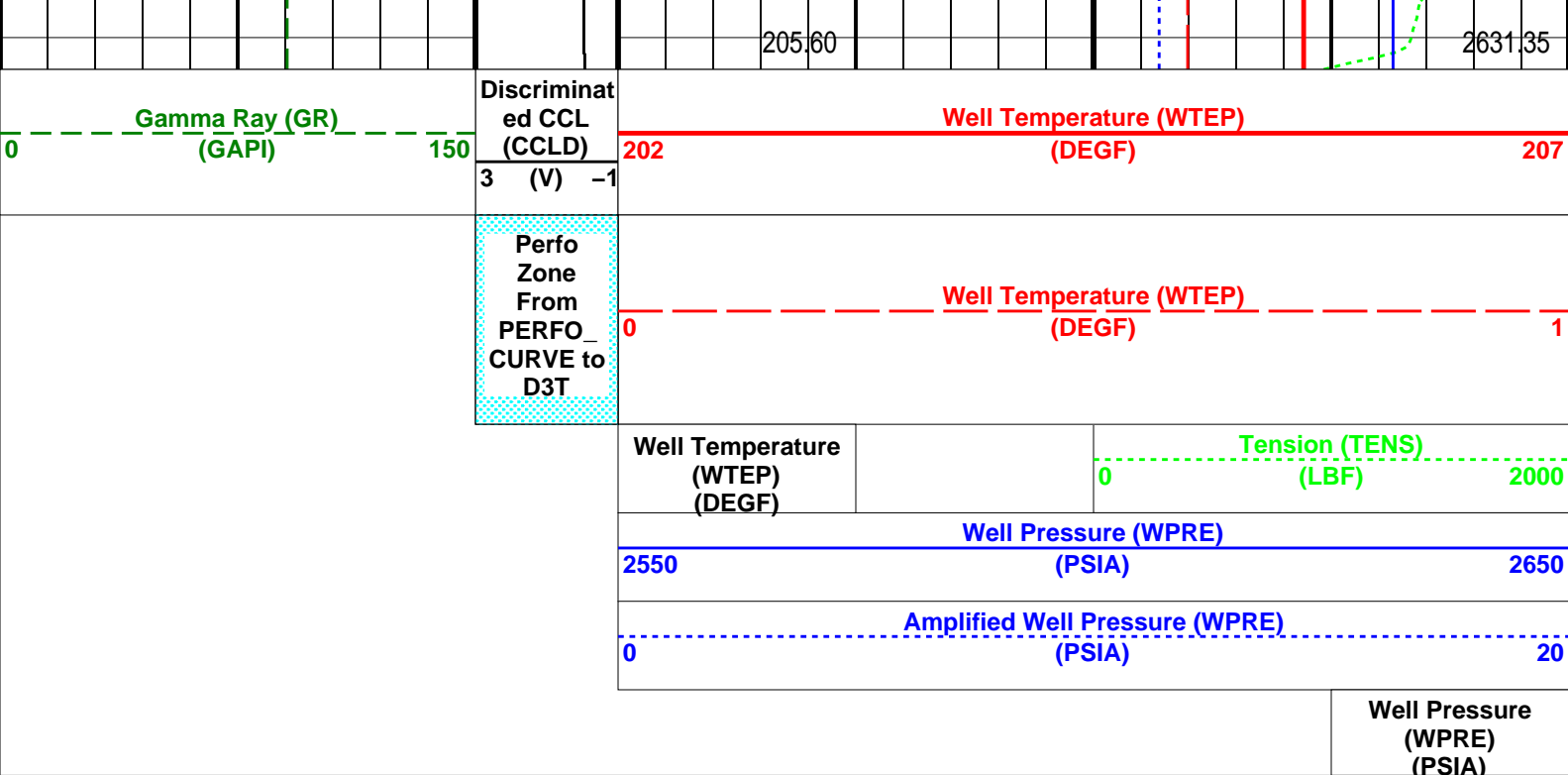
## PIP SUMMARY

**Time Mark Every 60 S**

		Well Pressure (WPRE) (PSIA)	
		Amplified Well Pressure (WPRE) (PSIA)	
		0	20
		Well Pressure (WPRE) (PSIA)	
		2550	2650
		Well Temperature (WTEP) (DEGF)	Tension (TENS) (LBF)
			0 2000
Perfo Zone From PERFO	Well Temperature (WTEP) (DEGF)		
	0		1







Time Mark Every 60 S

Format: PSP\_1 Vertical Scale: 1:200 Graphics File Created: 17-Jun-2007 17:27

OP System Version: 14C0-302

MCM

PSPT-A/B 14C0-302

Parameters							
DLIS Name		Description			Value		
DO PP	System and Miscellaneous		Depth Offset for Playback			2.8	M
	Playback Processing			NORMAL			
Input DLIS Files							
DEFAULT	PSP_019LUP	FN:18	PRODUCER	17-Jun-2007 17:15	2235.1 M	2129.9 M	
Output DLIS Files							
DEFAULT	PSP_020PUP	FN:19	PRODUCER	17-Jun-2007 17:27			

Company: **Esso Australia Pty Ltd.**

Well: **A-20**

Field: **Bream A**

Rig : **Prod4 / Crane**

Country: **Australia**

**Schlumberger**

2 1/8" Powerjet Perforation

7" Posiset Plug

Setting Record