



Company: Esso Australia Pty Ltd.

Well: FTA A6

Field: Fortescue

Rig: 175 Country: Australia

Depth Determination  
15-06-2007

Rig: 175  
Field: Fortescue  
Location: Bass Strait  
Well: FTA A6  
Company: Esso Australia Pty Ltd.

LOCATION			
Bass Strait		Elev.:	K.B. 34.5 m
Gippsland Basin		G.L.	69 m
		D.F.	34.5 m
Permanent Datum:	Mean Seal Level	Elev.:	0 m
Log Measured From:	Drill Floor	-34.5 m above Perm. Datum	
Drilling Measured From:	Drill Floor		
State: Victoria	Max. Well Deviation 58 deg	Longitude 148° 16' 36.62"E	Latitude 38° 24' 31.39"S

Logging Date			
Run Number	1		
Depth Driller	3830.1 m		
Schlumberger Depth	815.4 m Tagged		
Bottom Log Interval	815.4 m		
Top Log Interval	0 m		
Casing Fluid Type	Brine		
Salinity			
Density	8.55 g/cm3		
Fluid Level	0 m		
BIT/CASING/TUBING STRING			
Bit Size	8.500 in		
From	0 m		
To	33 m		
Casing/Tubing Size	7.625 in		
Weight	26.4 lbm/ft		
Grade	N-80		
From	0 m		
To	3676 m		
Maximum Recorded Temperatures			
Logger On Bottom	Time	9:45	
Unit Number	Location		
Recorded By	3829	AUSL	
Witnessed By	Owen Darby		
	Gary Smith		

PVT DATA				Run 1	Run 2	Run 3
Oil Density						
Water Salinity						
Gas Gravity						
Bo						
Bw						
1/Bg						
Bubble Point Pressure						
Bubble Point Temperature						
Solution GOR						
Maximum Deviation	58 deg					
CEMENTING DATA						
Primary/Squeeze	Primary					
Casing String No						
Lead Cement Type						
Volume						
Density						
Water Loss						
Additives						
Tail Cement Type						
Volume						
Density						
Water Loss						
Additives						
Expected Cement Top						
Logging Date						
Run Number						
Depth Driller						
Schlumberger Depth						
Bottom Log Interval						
Top Log Interval						
Casing Fluid Type						
Salinity						
Density						
Fluid Level						
BIT/CASING/TUBING STRING						
Bit Size						
From						
To						
Casing/Tubing Size						
Weight						
Grade						
From						
To						
Maximum Recorded Temperatures						
Logger On Bottom	Time					
Unit Number	Location					
Recorded By						
Witnessed By						

**DEPTH SUMMARY LISTING**

Date Created: 16-JUN-2007 15:22:34

**Depth System Equipment**

Depth Measuring Device		Tension Device		Logging Cable	
Type:	IDW-E	Type:	CMTD-B/A	Type:	7-46V-XS
Serial Number:	727	Serial Number:	1721	Serial Number:	76371
Calibration Date:	14-Jan-2007	Calibration Date:	06-May-2007	Length:	5999.99 M
Calibrator Serial Number:	1009	Calibrator Serial Number:	1174	Conveyance Method: Wireline Rig Type: Offshore_Fixed	
Calibration Cable Type:	7-46V-XS	Calibration Gain:	1.63		
Wheel Correction 1:	-5	Calibration Offset:	-1032.00		
Wheel Correction 2:	-4				

**Depth Control Parameters**

Log Sequence:	Subsequent Log In the Well
Reference Log Name:	Casing tally
Reference Log Run Number:	1
Reference Log Date:	29-12-84

**Depth Control Remarks**

1. Correlated to casing tally provided by client
2. Used IDW as primary depth control
3. Used Z-Chart as secondary depth control
4.
5.
6.

**DISCLAIMER**

THE USE OF AND RELIANCE UPON THIS RECORDED-DATA BY THE HEREIN NAMED COMPANY (AND ANY OF ITS AFFILIATES, PARTNERS, REPRESENTATIVES, AGENTS, CONSULTANTS AND EMPLOYEES) IS SUBJECT TO THE TERMS AND CONDITIONS AGREED UPON BETWEEN SCHLUMBERGER AND THE COMPANY, INCLUDING: (a) RESTRICTIONS ON USE OF THE RECORDED-DATA; (b) DISCLAIMERS AND WAIVERS OF WARRANTIES AND REPRESENTATIONS REGARDING COMPANY'S USE OF AND RELIANCE UPON THE RECORDED-DATA; AND (c) CUSTOMER'S FULL AND SOLE RESPONSIBILITY FOR ANY INFERENCE DRAWN OR DECISION MADE IN CONNECTION WITH THE USE OF THIS RECORDED-DATA.

OTHER SERVICES1	OTHER SERVICES2
OS1: Gyro	OS1:
OS2:	OS2:
OS3:	OS3:
OS4:	OS4:
OS5:	OS5:

REMARKS: RUN NUMBER 1	REMARKS: RUN NUMBER 2
Correlated to casing tally provided by client.	
Objective:	
Rig up wireline, RIH with toolstring incorporating CCL, tag cement plug and log to surface through drill floor.	
The client requires exact location of casing collars for setting of the whip stock to mill a window and kick off from the current well.	

CCL to tool bottom = 0.3m
---------------------------

CCL to tool bottom = 0.5m  
Top of cement found at = 815.4m MDKB

Schlumberger Crew:

Operators = Rick Murray & Gerald Brady (Days)

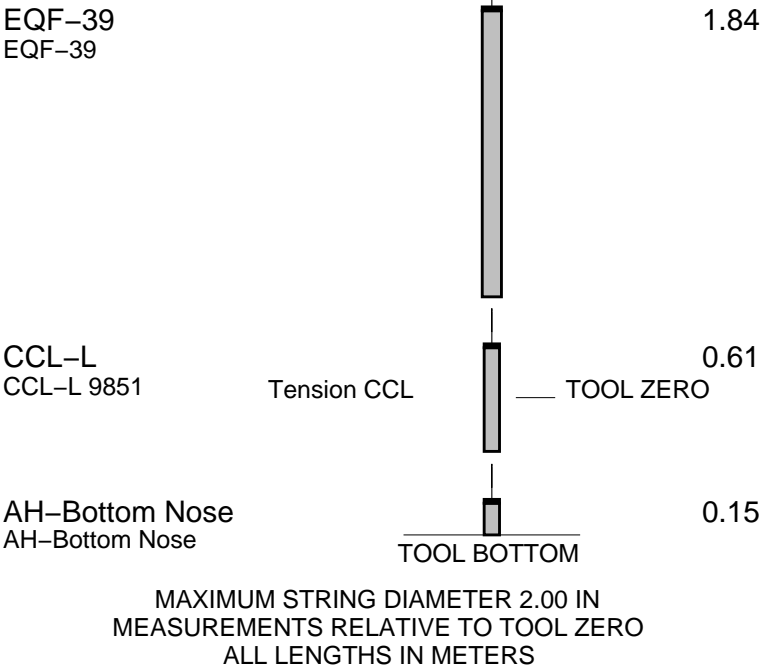
Zeb Casy & Peter Battams (Nights)

Specialist = Owen Darby

RUN 1			RUN 2		
SERVICE ORDER #:			SERVICE ORDER #:		
PROGRAM VERSION:			PROGRAM VERSION:		
FLUID LEVEL:			FLUID LEVEL:		
LOGGED INTERVAL			LOGGED INTERVAL		
START			START		
STOP			STOP		

## EQUIPMENT DESCRIPTION

RUN 1		RUN 2	
SURFACE EQUIPMENT			
WITM (SHM)			
DOWNHOLE EQUIPMENT			
MH-22 MH-22			
AH-38			
EQF-39 EQF-39			
EQF-39 EQF-39			



Client: Esso Australia Pty Ltd.

Well: FTA A6

Field: Gippsland Basin

State: Victoria

Country: Australia

Mean Sea Level

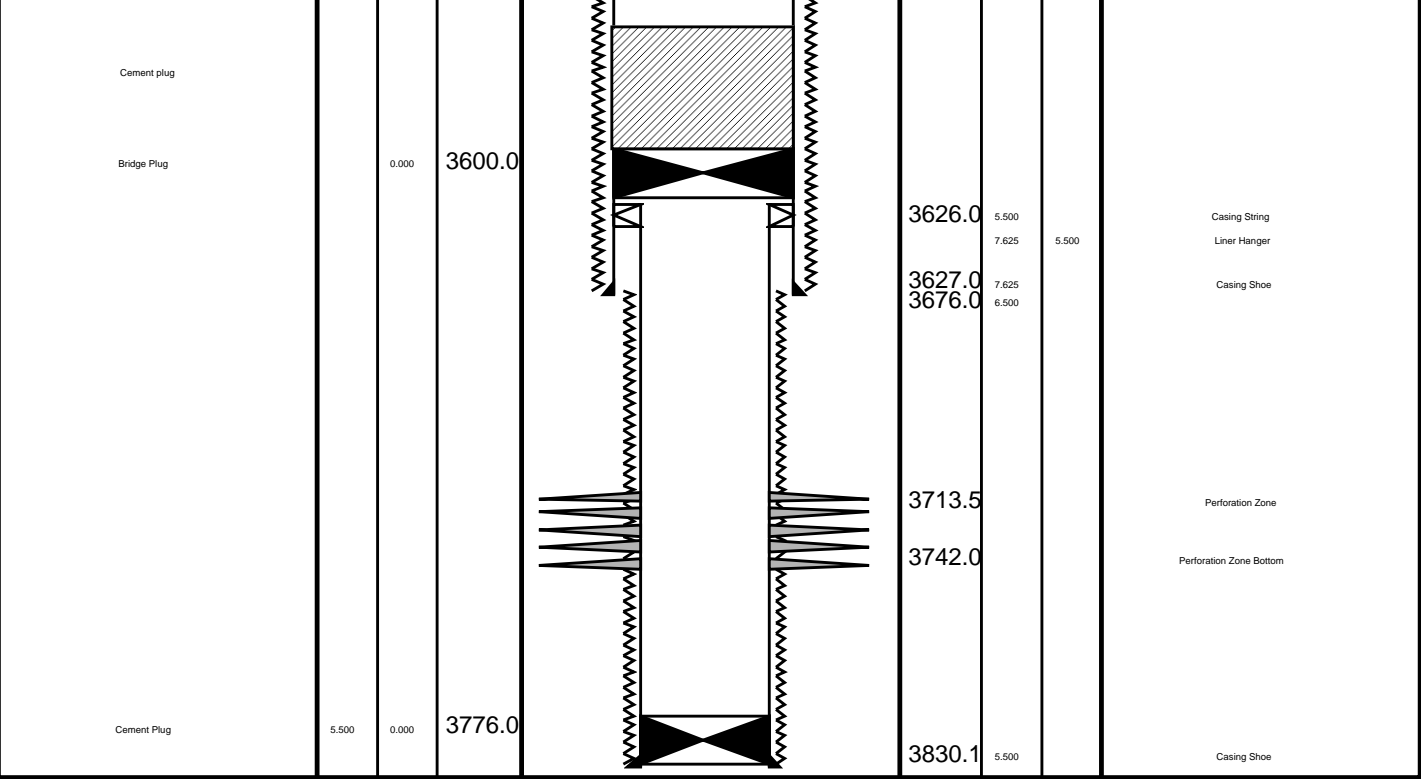
Rig Name: 175

Reference Datum:

Elevation: 34.4 m

6/16/2007

Production String	(m)			Well Schematic	(m)			Casing String
	OD	ID	MD		MD	OD	ID	
					0.0	12.000		Borehole Segment
						7.625		Casing String
Cement Plug								
Bridge Plug	7.625	0.000	1440.0		1369.2	10.750		Casing Shoe
					1369.2	9.000		Borehole Segment



## Job Event Summary

MAXIS Field Log

### Schlumberger Job Event Summary

Time	Elapsed Time	Depth (M)	File
Simulated Log	14-Jun-2007 19:21	000:06	CCL_004LUP
Simulated Log	14-Jun-2007 19:29	000:01	PERFO_005LUP
Rig Up Started	15-Jun-2007 8:00		
Simulated Log	15-Jun-2007 9:07	000:01	CCL_006LUP
Log Pass (down)	15-Jun-2007 9:11	000:34	0.6 - 821.4 CCL_007LDP
Log Pass (up)	15-Jun-2007 9:45	001:00	821.3 - -3.3 CCL_008LUP
Rig Down Completed	15-Jun-2007 11:00		

MAXIS Field Log

Company: Esso Australia Pty Ltd

Well: FTA A6a

## Output DLIS Files

DEFAULT CCL\_008LUP FN:7 PRODUCER 15-Jun-2007 09:45 821.3 M -3.3 M

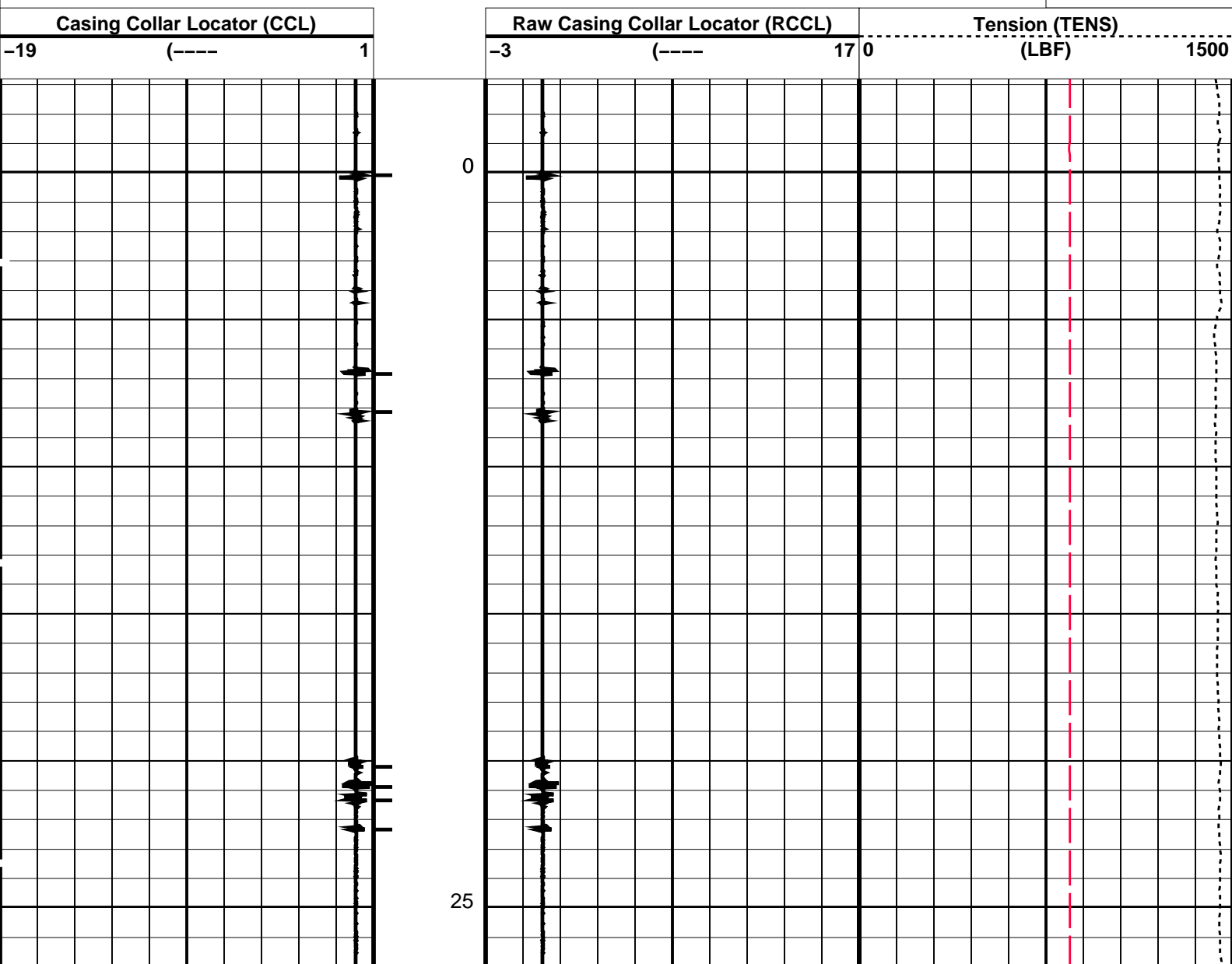
OP System Version: 15C0-309  
MCM

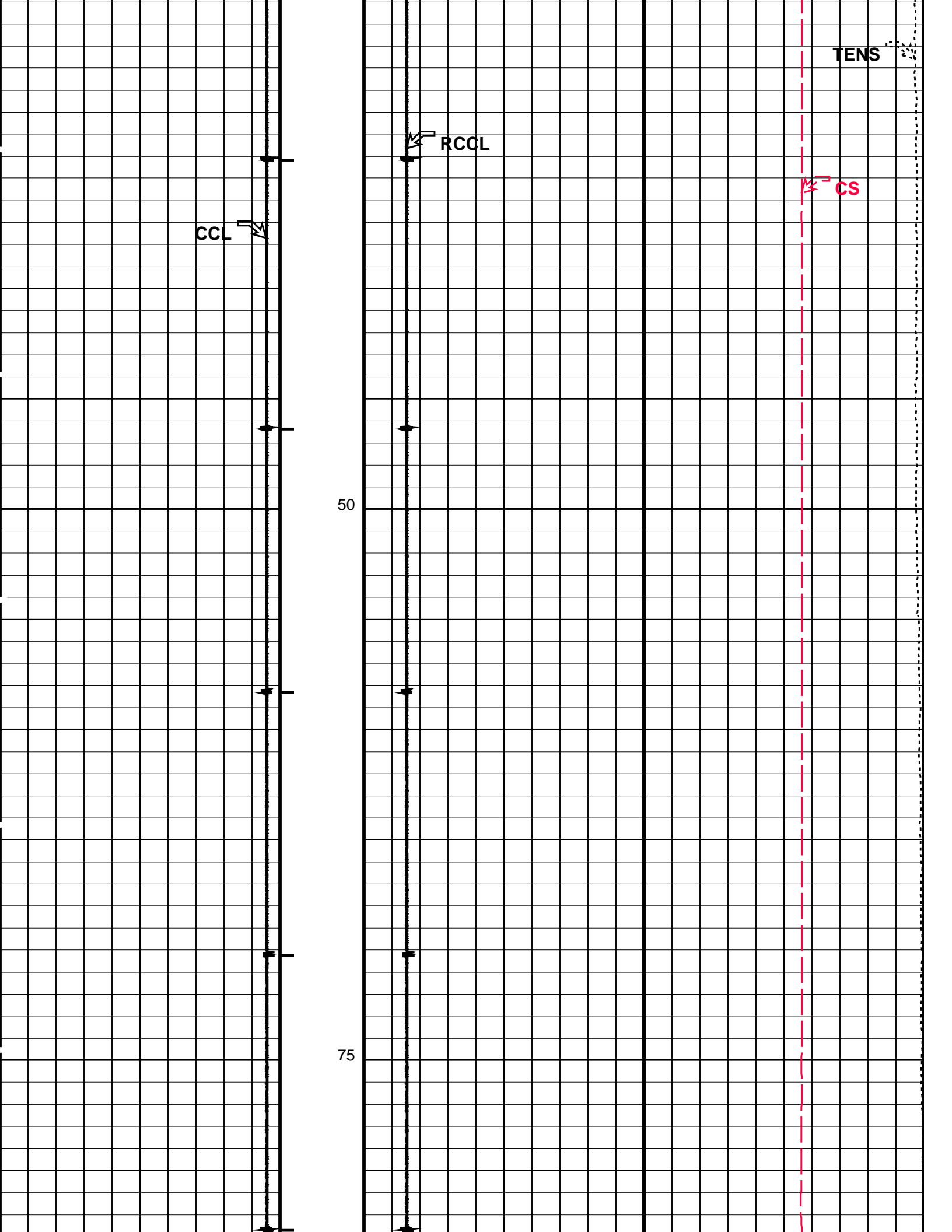
CCL-L 15C0-309

## PIP SUMMARY

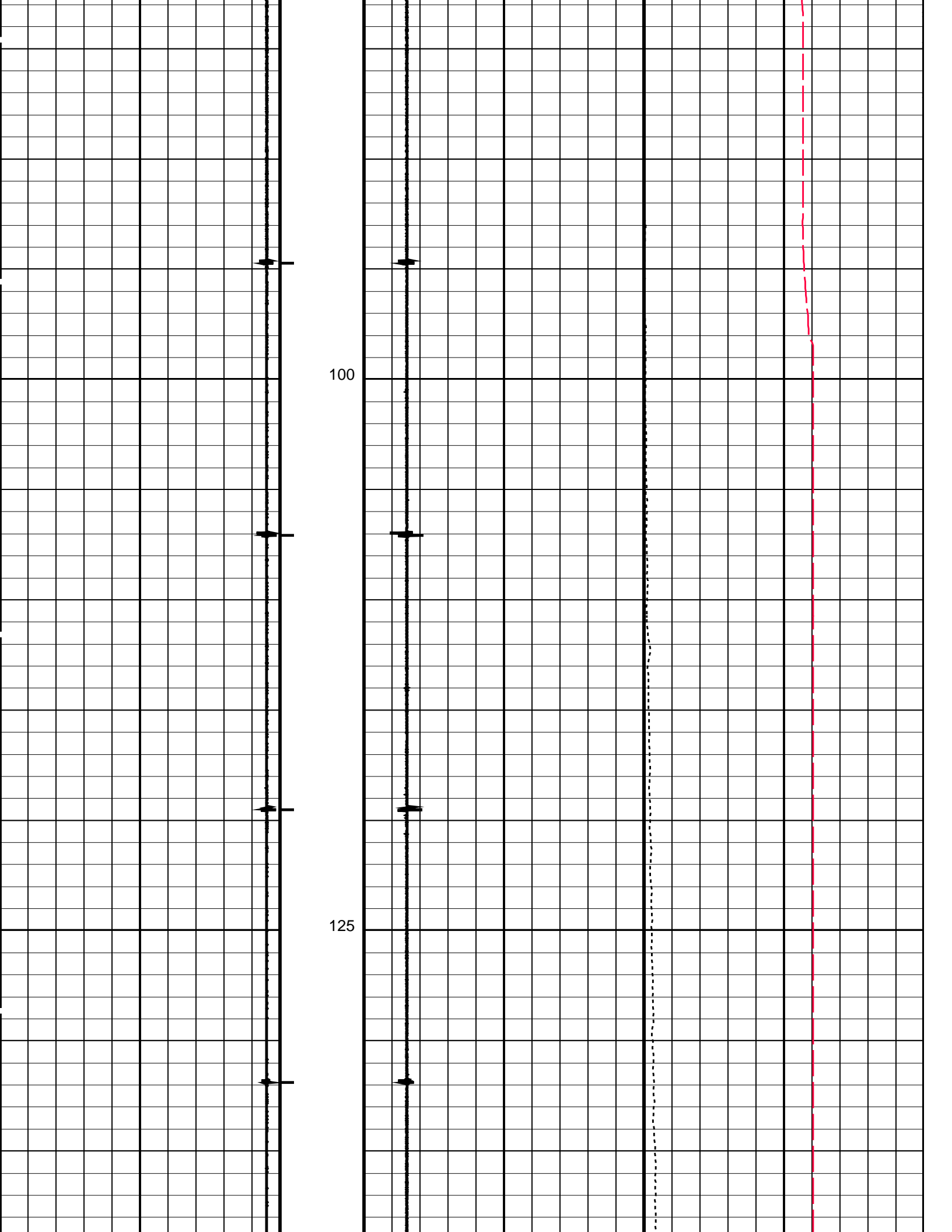
└─ Casing Collars

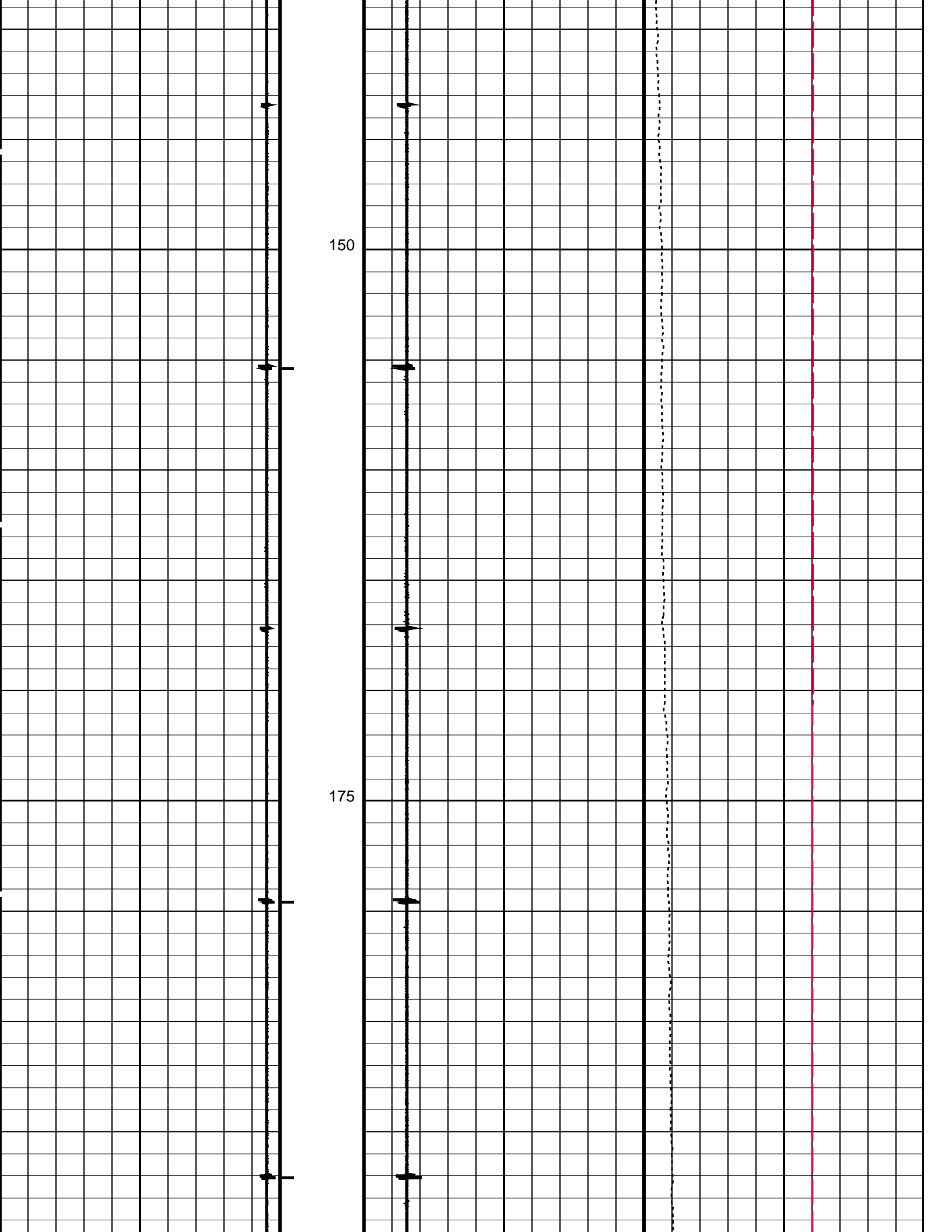
Time Mark Every 60 S

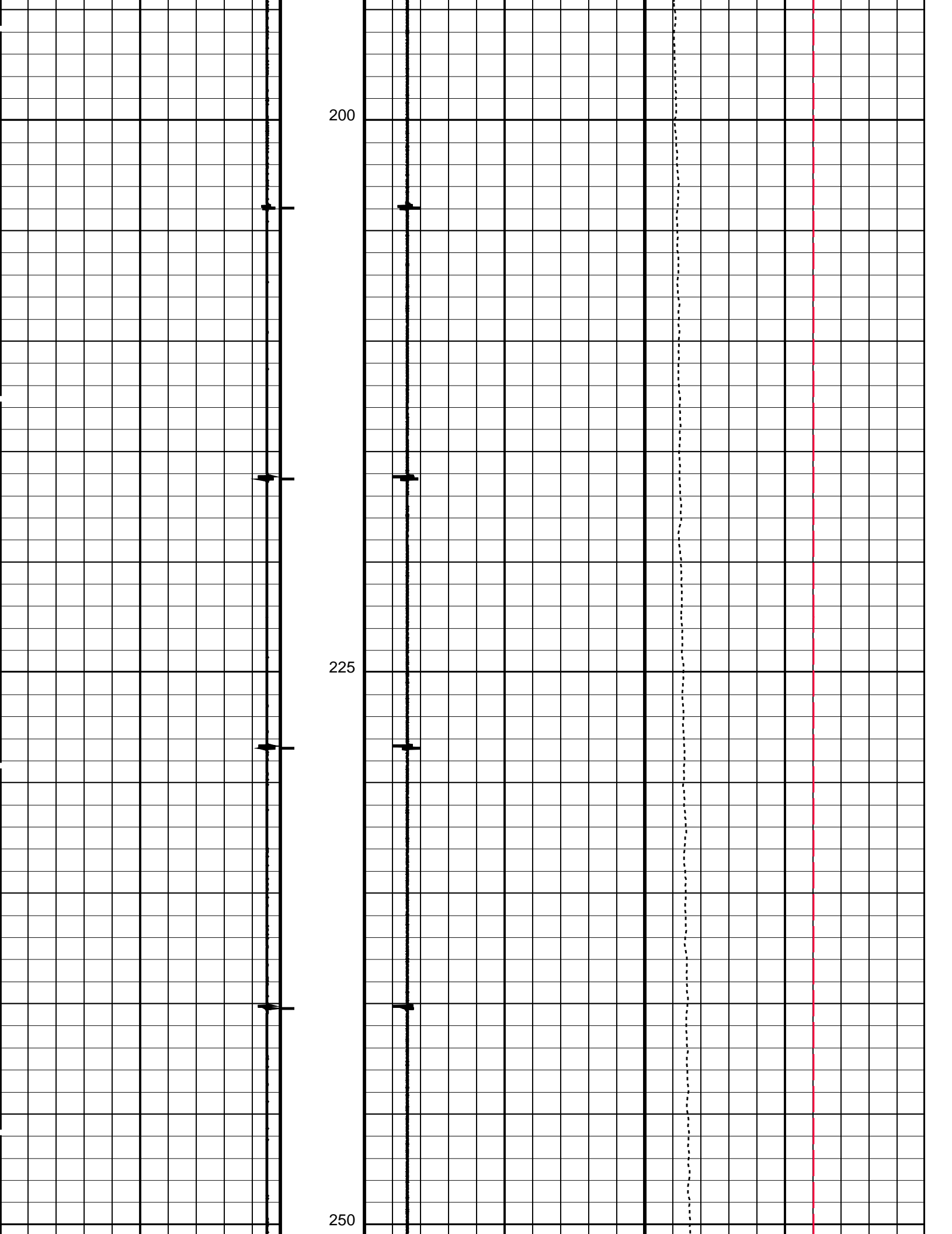
Cable Speed (CS)  
0 (M/HR) 5000

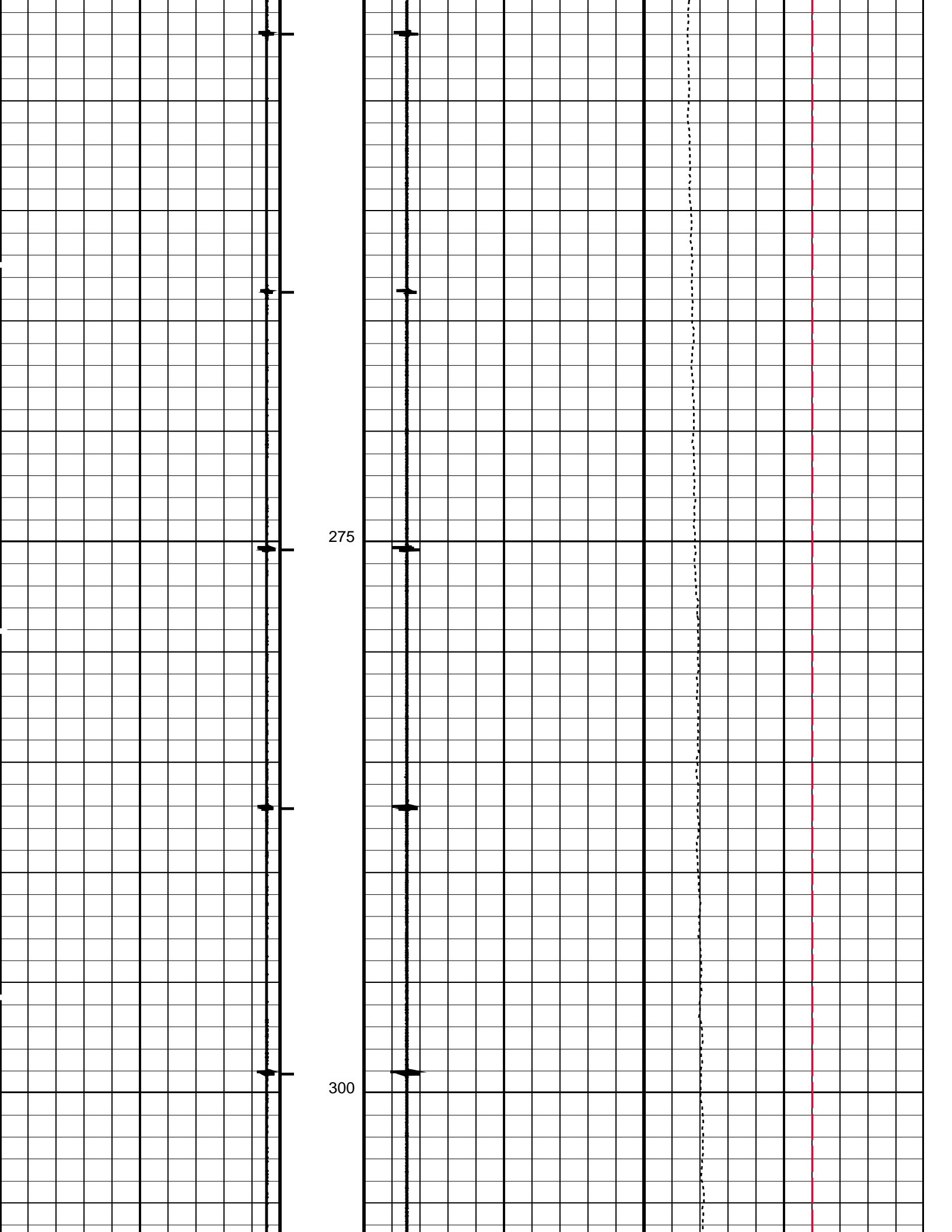


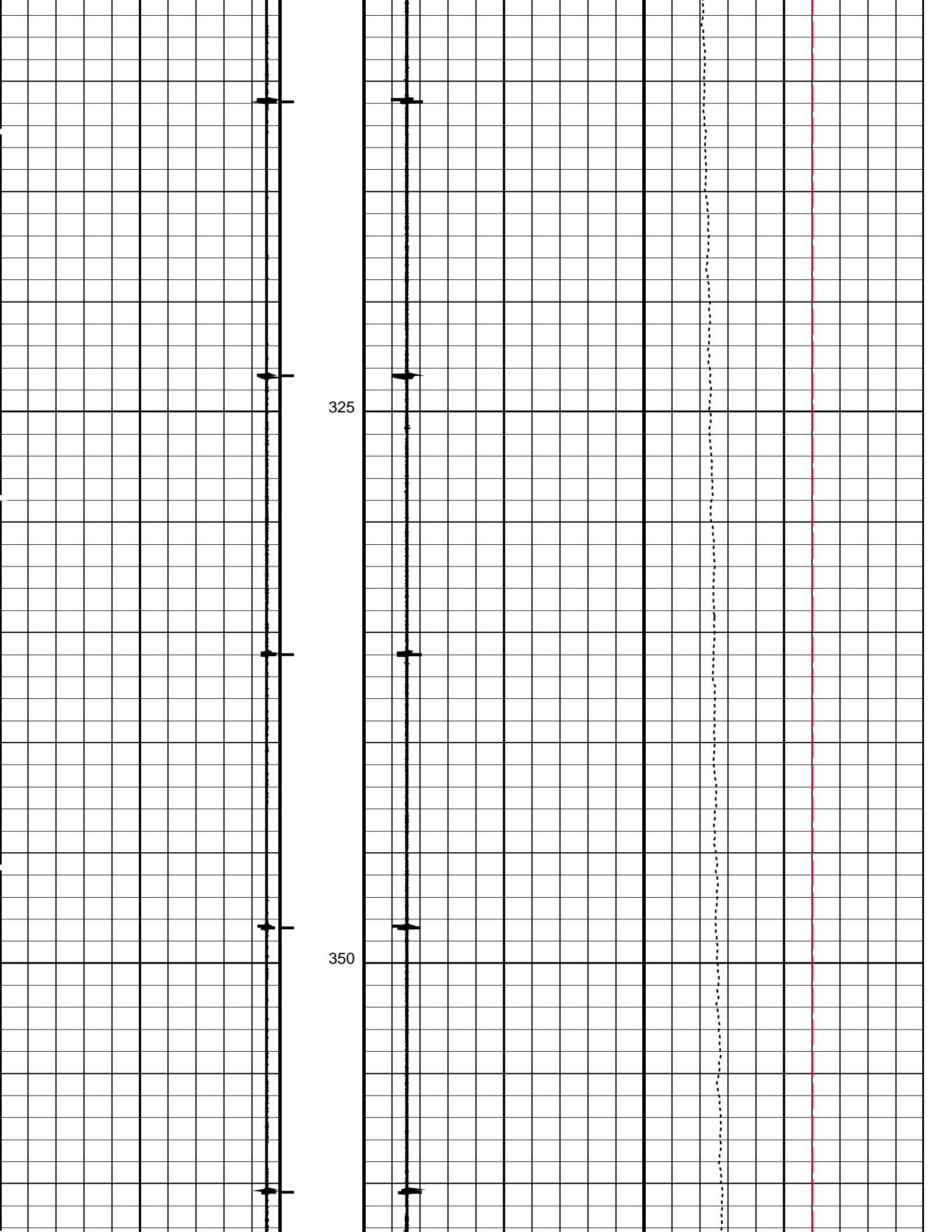


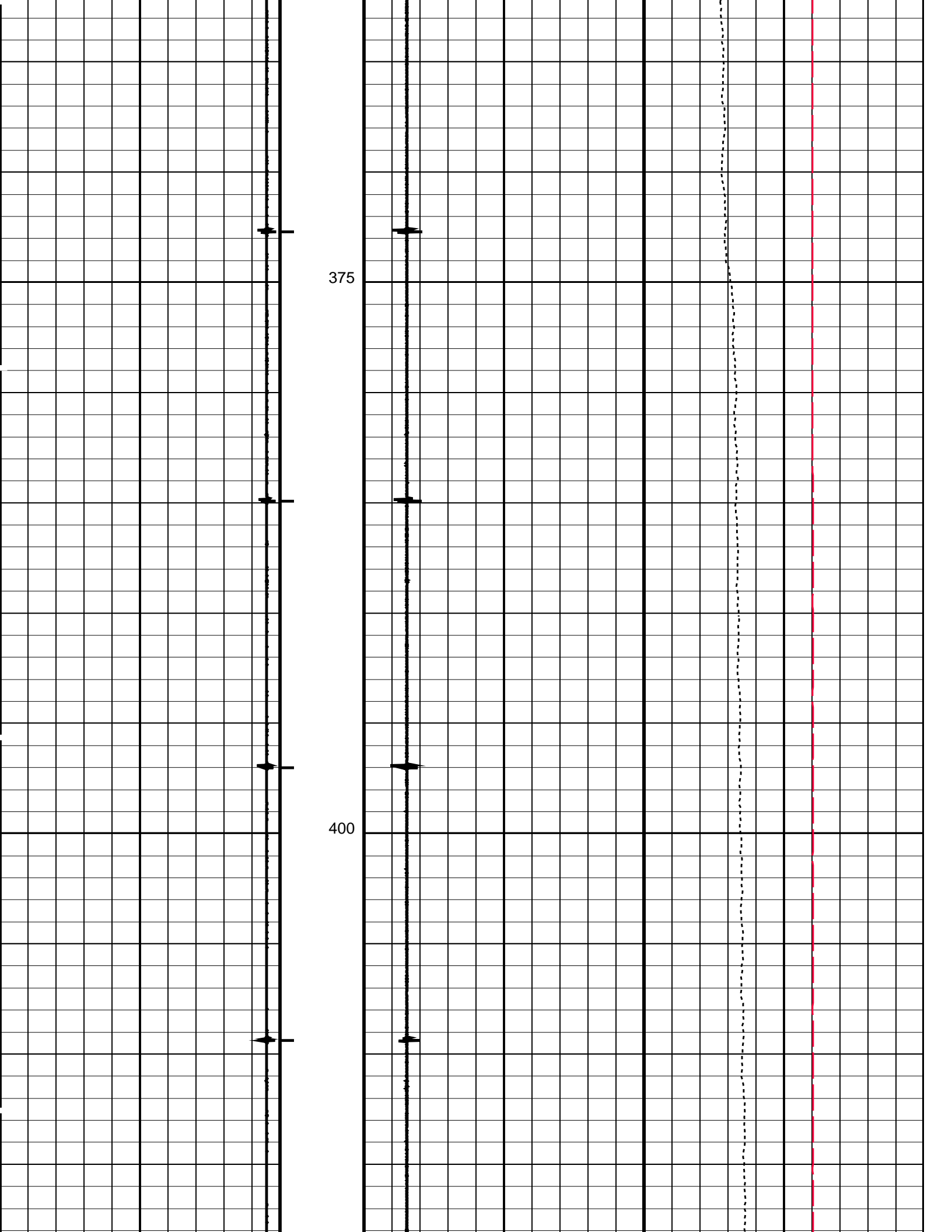


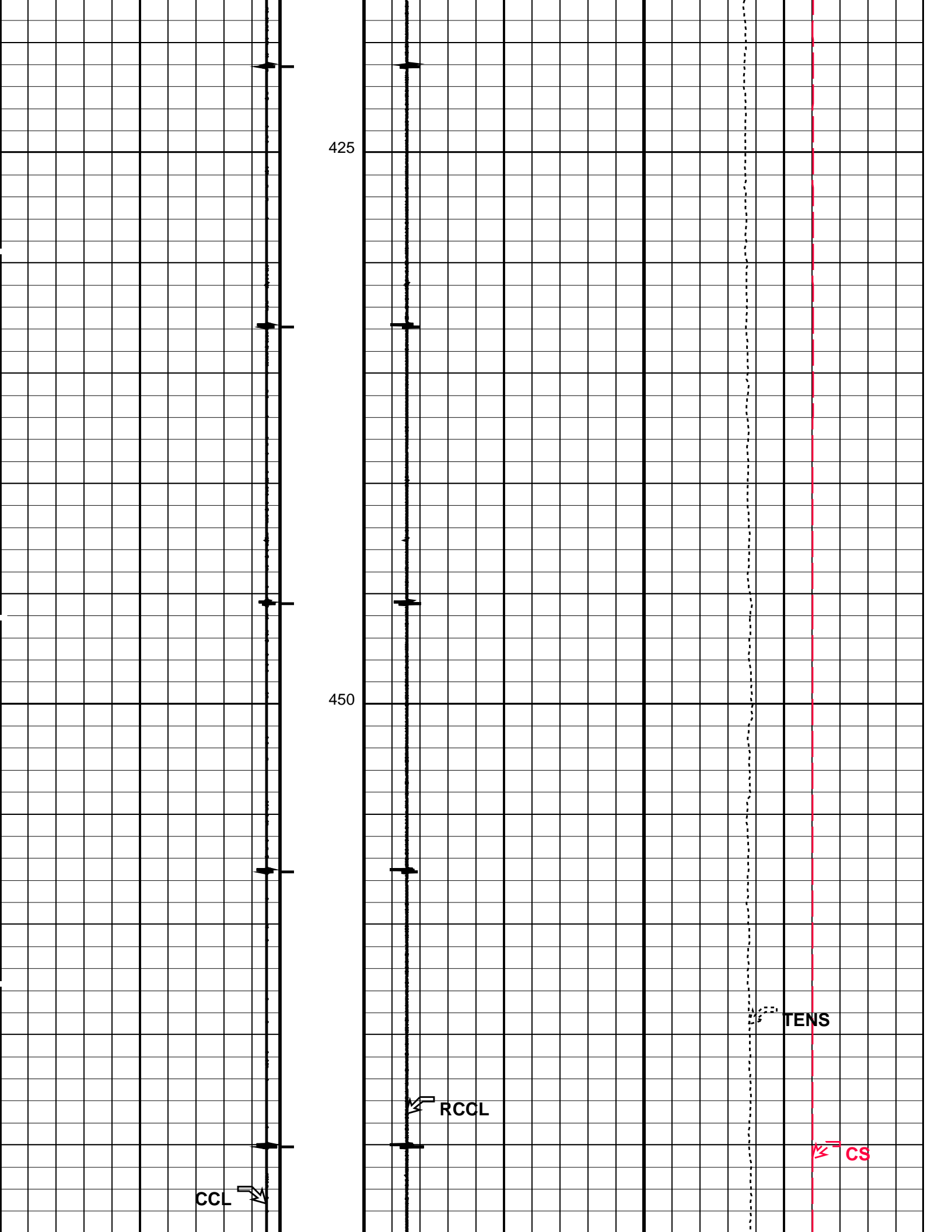


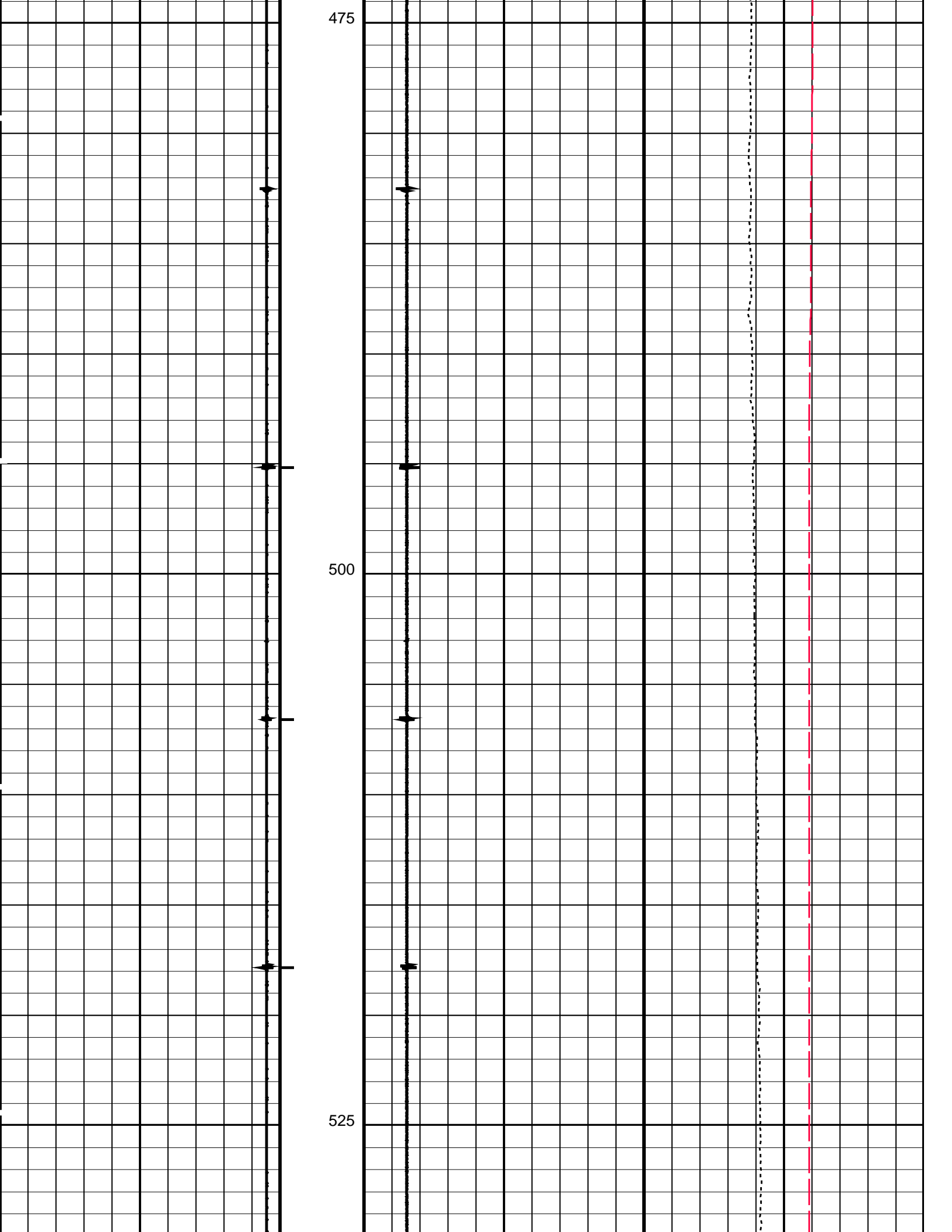




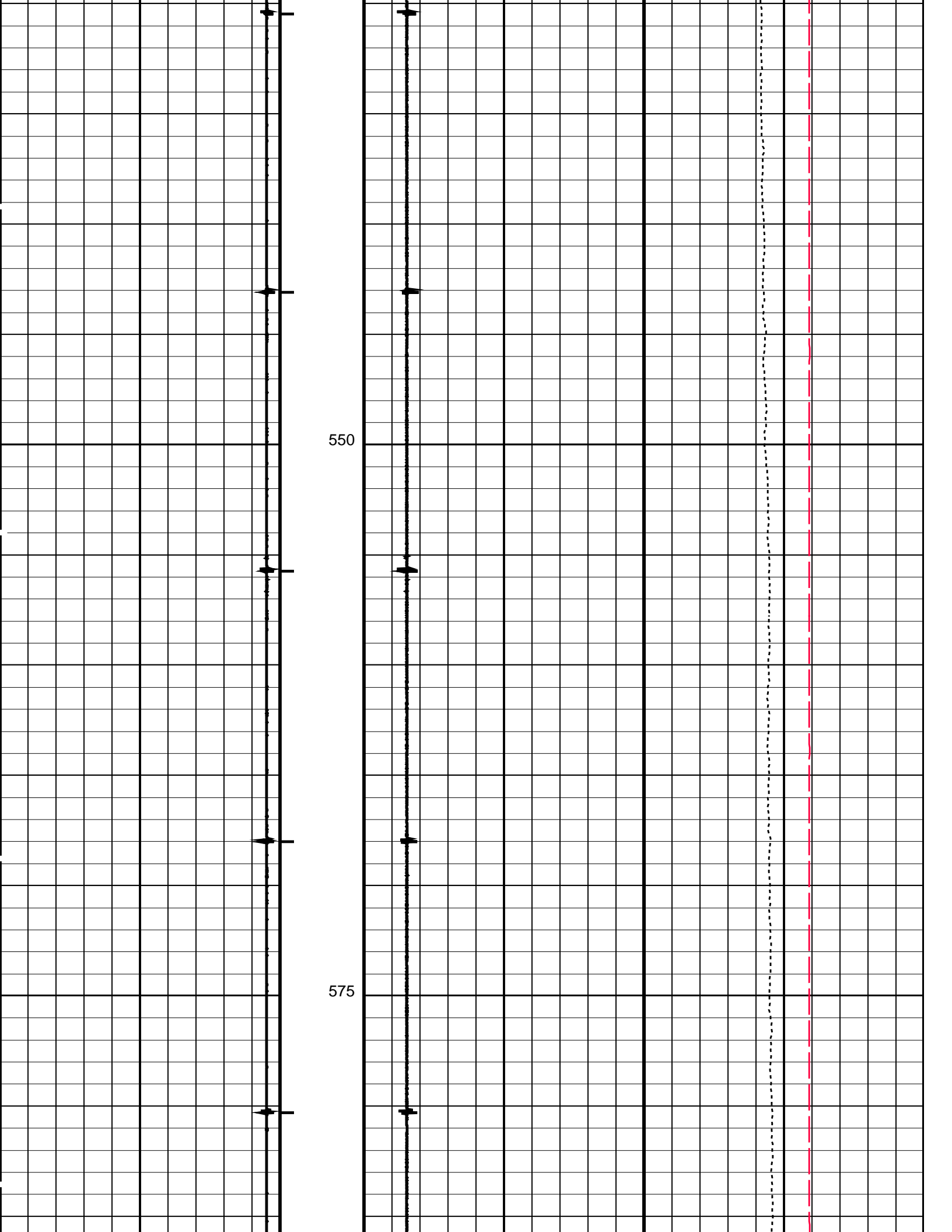


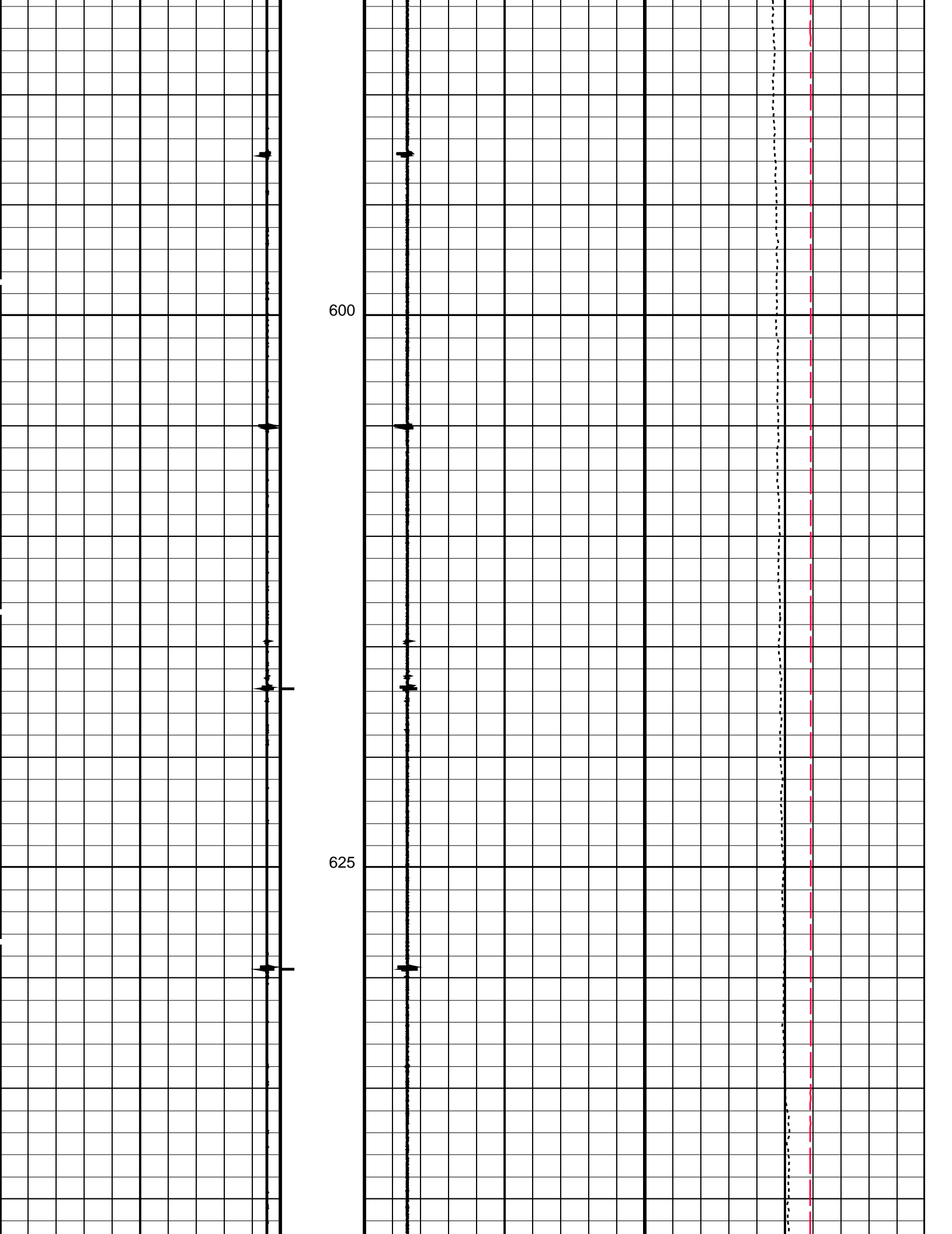


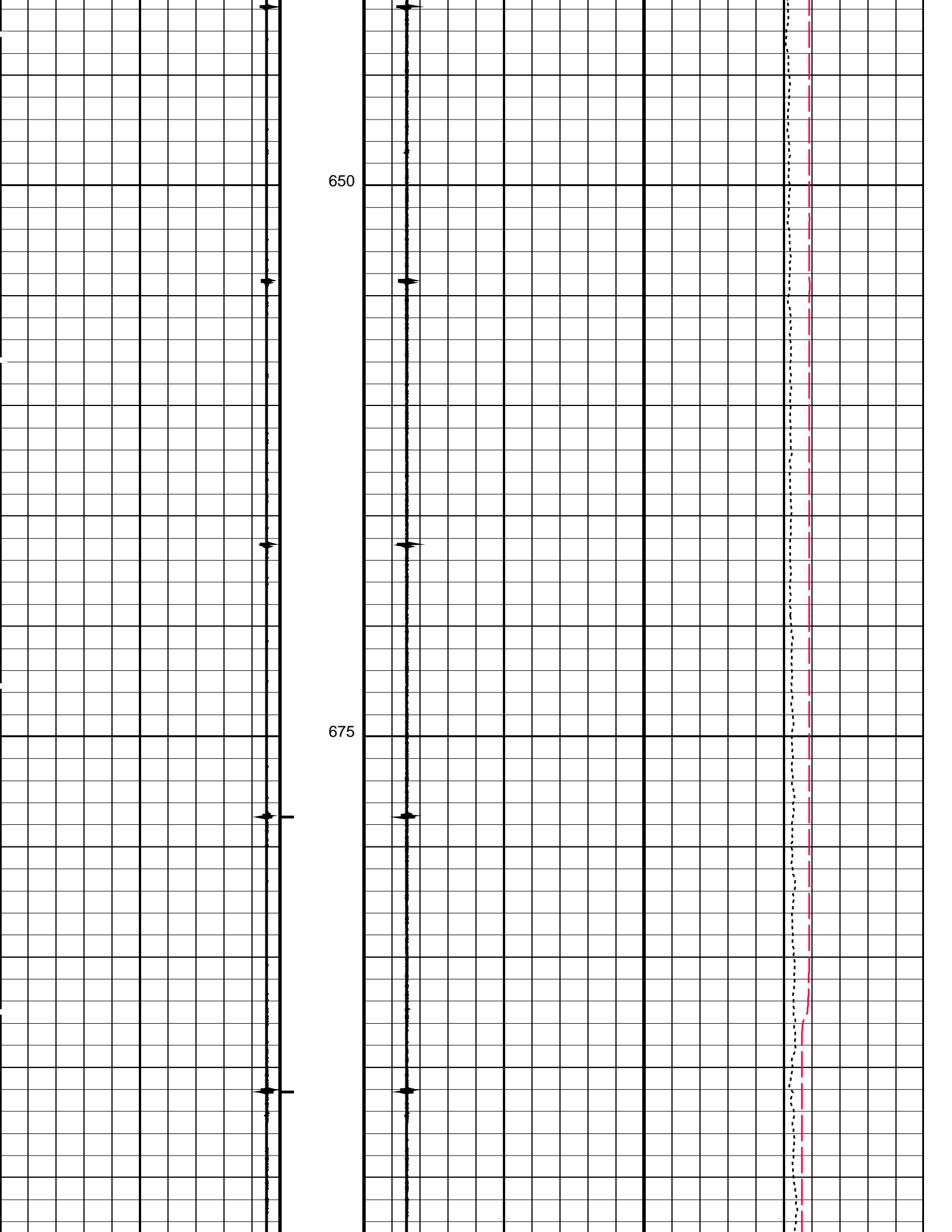


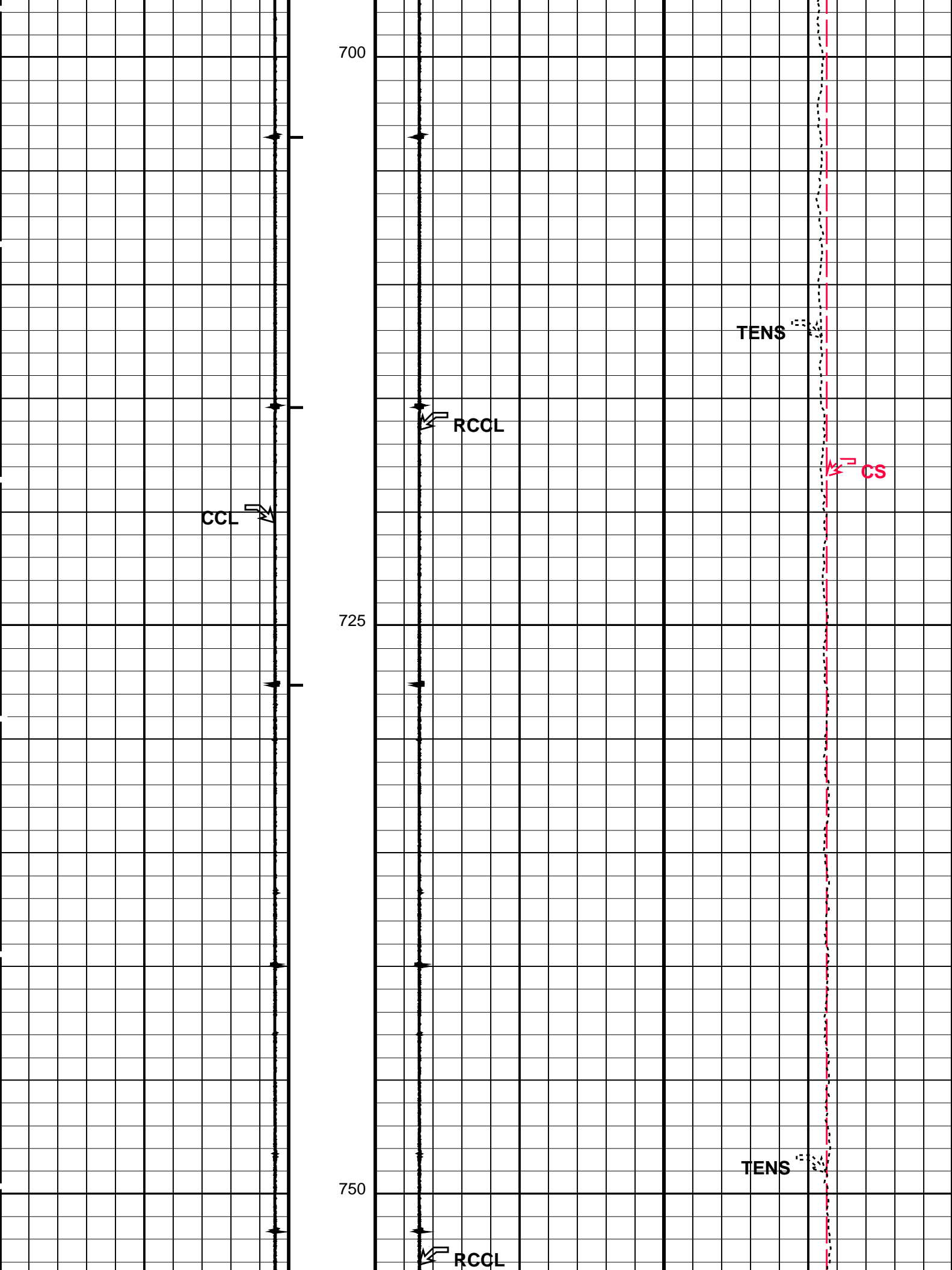


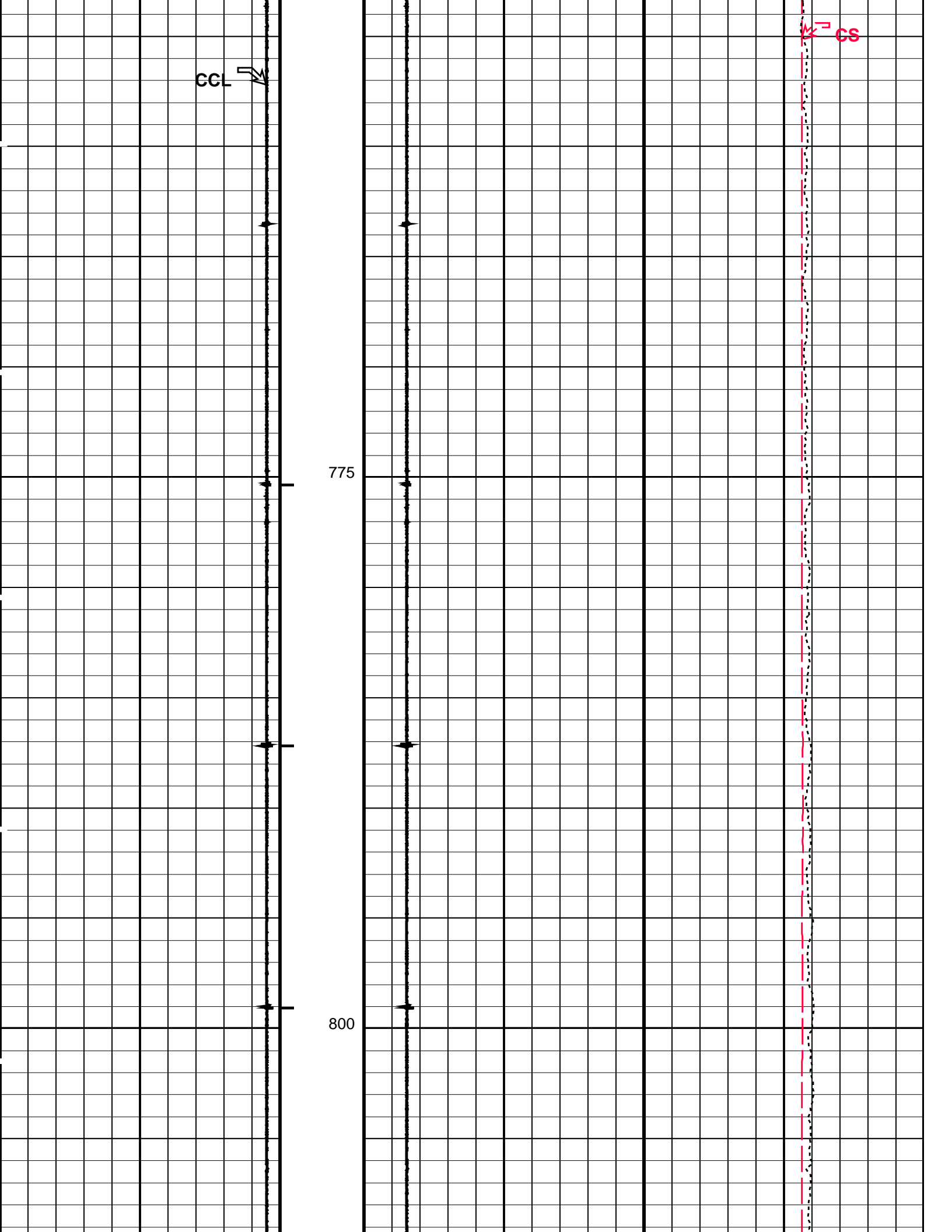


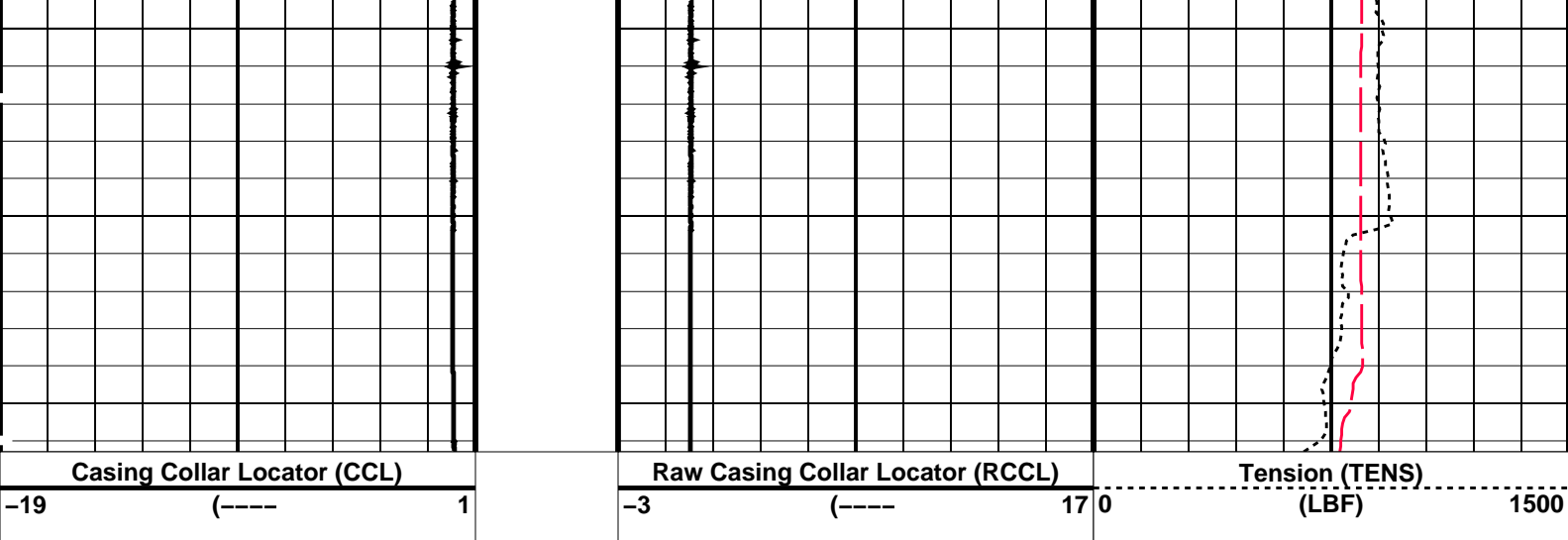












Cable Speed (CS)  
0 (M/HR) 5000

### PIP SUMMARY

← Casing Collars

Time Mark Every 60 S

### Parameters

DLIS Name	Description	Value
CCLD	CCL-L: Casing Collar Locator	12 IN
CCLT	CCL reset delay	0.3 V
	CCL Detection Level	

Format: CCLLog Vertical Scale: 1:200

Graphics File Created: 15-Jun-2007 09:45

### OP System Version: 15C0-309

MCM

CCL-L 15C0-309

### Output DLIS Files

DEFAULT CCL\_008LUP FN:7 PRODUCER 15-Jun-2007 09:45

Company: **Esso Australia Pty Ltd.**

**Schlumberger**

Well: **FTA A6**  
Field: **Fortescue**  
Rig: **175**  
Country: **Australia**

Depth  
Determination  
15-06-2007