

Company: Esso Australia Pty Ltd

Well: A-7

Field: Tuna

Rig: Crane/Prod 4 Country: Australia

MWPT 2 1/8" Enerjet Perforation  
4 1/2" Posiset Plug  
GR Survey

Rig: Crane/Prod 4  
Field: Tuna  
Location: Gippsland  
Well: A-7  
Company: Esso Australia Pty Ltd

LOCATION			
Gippsland Basin Bass Strait	Elev.:	K.B.	32.4 m
		G.L.	-59 m
		D.F.	32.4 m
Permanent Datum:	M.S.L.		
Log Measured From:	D.F.	32.4 m	above Perm. Datum
Drilling Measured From:	D.F.		
State: Victoria	Max. Well Deviation 56 deg	Longitude 148°25'06.5" S	Latitude 038°10'16.5" E

Logging Date 5-Apr-2007

Run Number 1 thru 5

Depth Driller 2782.5 m

Schlumberger Depth 2782.5 m

Bottom Log Interval 2810.03 m

Top Log Interval 2190 m

Casing Fluid Type Production Fluids

Salinity

Density

Fluid Level

BIT/CASING/TUBING STRING

Bit Size 6.000 in

From

To

Casing/Tubing Size 4.500 in

Weight 12.6 lbm/ft

Grade 13-CR

From 1750 m

To 2832 m

Maximum Recorded Temperatures 218 degF

Logger On Bottom 5-Apr-2007 21:02

Unit Number 889 Ausl / Prod 4

Recorded By G Wright , S Gilbert , M Pratt.

Witnessed By G Rimmer,B White

Run 1

Oil Density  
Water Salinity  
Gas Gravity  
Bo  
Bw  
1/Bg

Bubble Point Pressure  
Bubble Point Temperature  
Solution GOR

Maximum Deviation 56 deg

CEMENTING DATA

Primary/Squeeze Primary

Casing String No

Lead Cement Type

Volume

Density

Water Loss

Additives

Tail Cement Type

Volume

Density

Water Loss

Additives

Expected Cement Top

Logging Date

Run Number

Depth Driller

Schlumberger Depth

Bottom Log Interval

Top Log Interval

Casing Fluid Type

Salinity

Density

Fluid Level

BIT/CASING/TUBING STRING

Bit Size

From

To

Casing/Tubing Size

Weight

Grade

From

To

Maximum Recorded Temperatures

Logger On Bottom 5-Apr-2007 21:02

Unit Number 889 Ausl / Prod 4

Recorded By

Witnessed By

## DEPTH SUMMARY LISTING

### Depth System Equipment

Date Created: 26-Mar-2007 16:26:31

#### Depth Measuring Device

Type: IDW-EB  
Serial Number: 6373  
Calibration Date: 5-JUL-2006  
Calibrator Serial Number: 9  
Calibration Cable Type: 2-32ZT  
Wheel Correction 1: -2  
Wheel Correction 2: -4

#### Tension Device

Type: CMTD-B/A  
Serial Number: 325357  
Calibration Date: 30-MAR-2007  
Calibrator Serial Number: 1174  
Calibration Gain: 0.90  
Calibration Offset: 197.00

#### Logging Cable

Type: 2-32ZT  
Serial Number: 24426  
Length: 6600.14 M  
Conveyance Method: Wireline  
Rig Type: Offshore\_Fixed

### Depth Control Parameters

Log Sequence: Subsequent Log In the Well  
Reference Log Name: Solar Compersite Log  
Reference Log Run Number:  
Reference Log Date:

### Depth Control Remarks

1. IDW used as primary depth control
2. Z chart used as secondary depth control
- 3.
- 4.
- 5.
- 6.

#### DISCLAIMER

THE USE OF AND RELIANCE UPON THIS RECORDED-DATA BY THE HEREIN NAMED COMPANY (AND ANY OF ITS AFFILIATES, PARTNERS, REPRESENTATIVES, AGENTS, CONSULTANTS AND EMPLOYEES) IS SUBJECT TO THE TERMS AND CONDITIONS AGREED UPON BETWEEN SCHLUMBERGER AND THE COMPANY, INCLUDING: (a) RESTRICTIONS ON USE OF THE RECORDED-DATA; (b) DISCLAIMERS AND WAIVERS OF WARRANTIES AND REPRESENTATIONS REGARDING COMPANY'S USE OF AND RELIANCE UPON THE RECORDED-DATA; AND (c) CUSTOMER'S FULL AND SOLE RESPONSIBILITY FOR ANY INFERENCE DRAWN OR DECISION MADE IN CONNECTION WITH THE USE OF THIS RECORDED-DATA.

#### OTHER SERVICES1

OS1: None  
OS2:  
OS3:  
OS4:  
OS5:

#### REMARKS: RUN NUMBER 1

Log Correlated to Solar composite log provided by client.

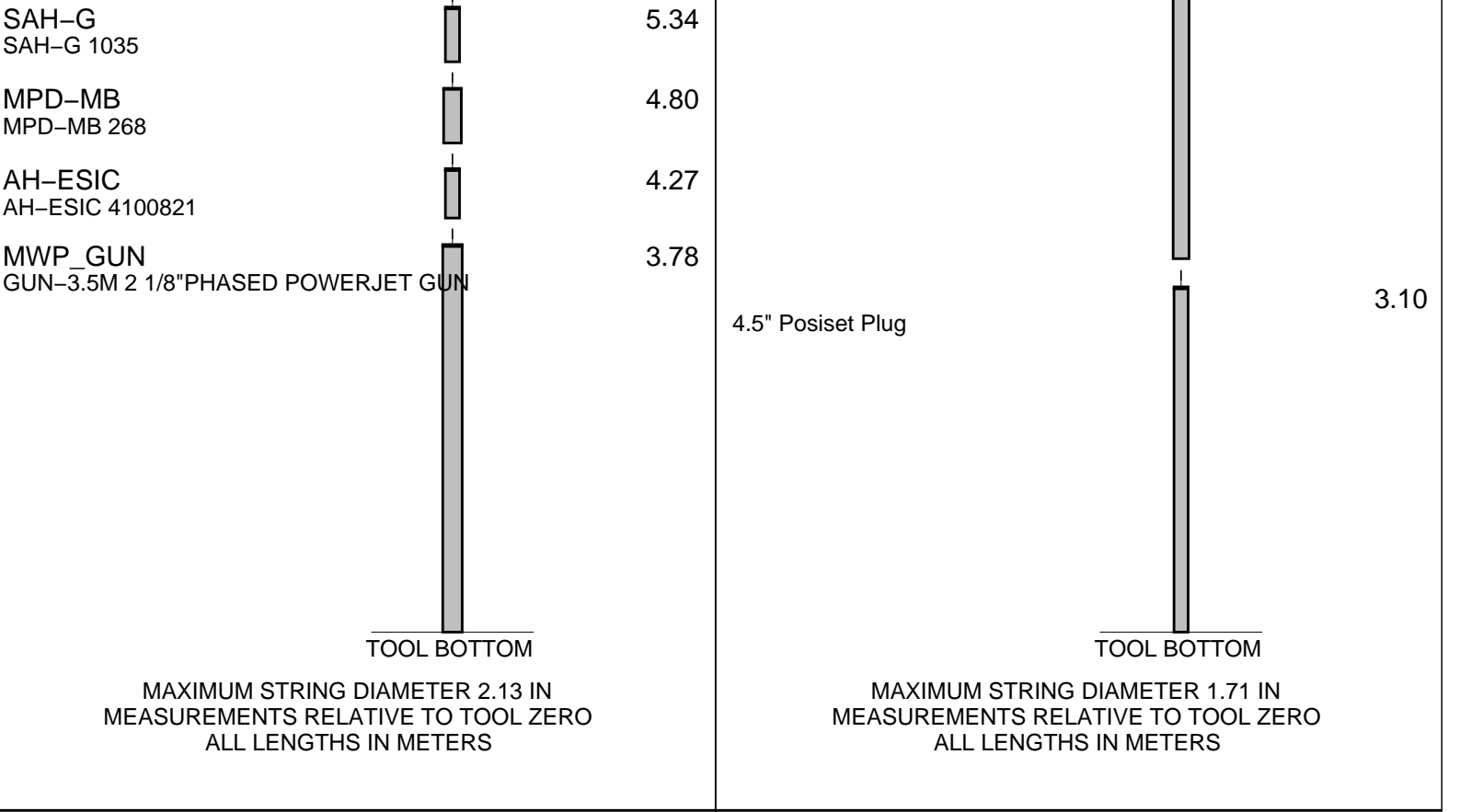
Objectives: Conduct Gamma-Ray Survey over the interval 2820m MDKB

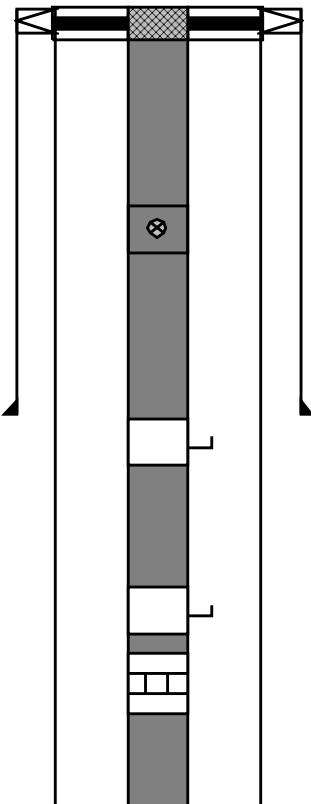
to 2190m MDKB. Perforate using 2 1/8" Phased Enerjet and MWPT over the interval 2771m to 2774.5 m MDKB .

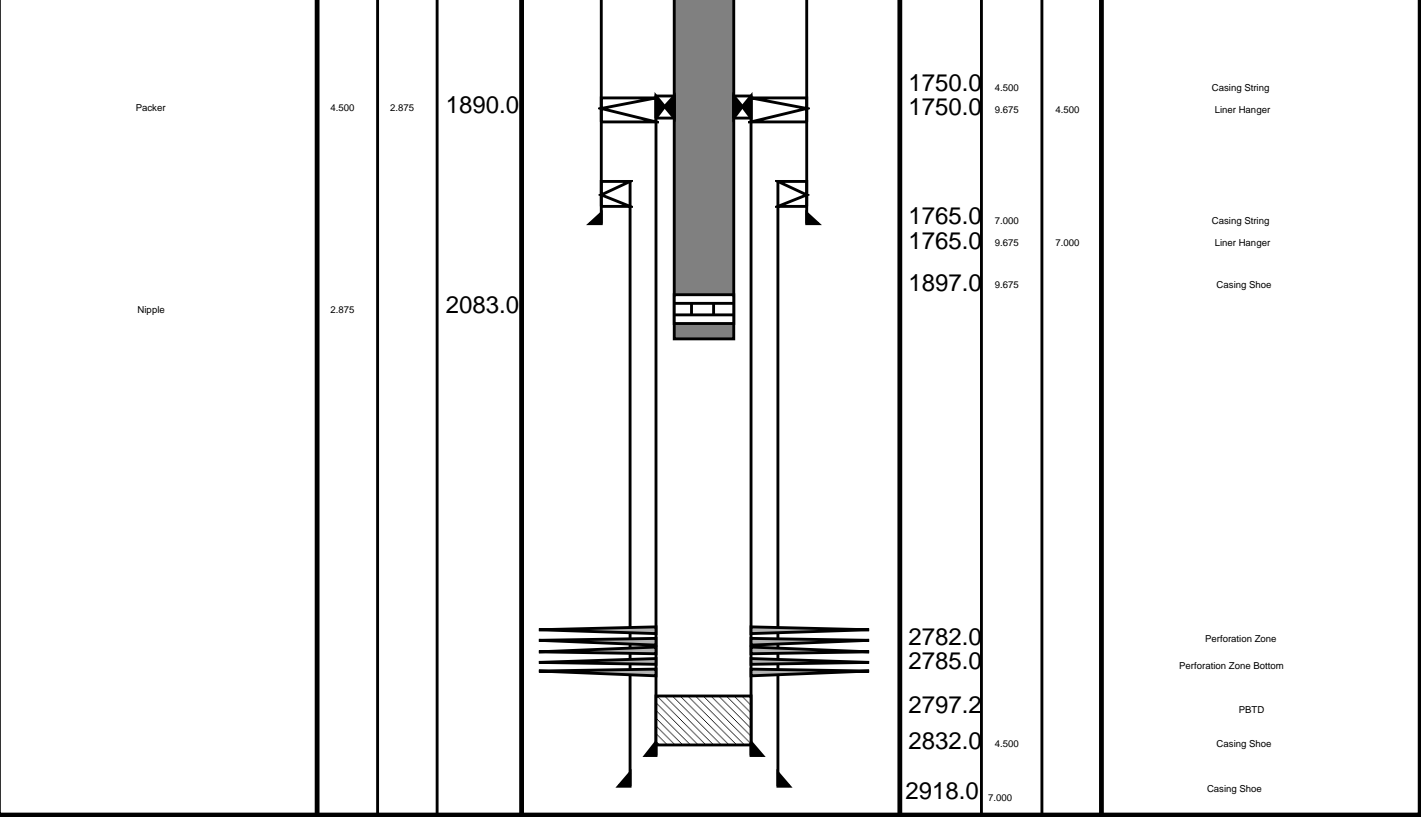
Set 4.5" Possiset plug with top of seal @ 2780m MDKB then dump approx 1m of

Cement on top .

\_\_\_\_ TOOL ZERO<sup>9.80</sup>



Production String	(in)		(m)	Well Schematic	(m)	(in)		Casing String
	OD	ID	MD		MD	OD	ID	
Tubing Tubing Hanger	2.875 9.875	2.875	13.5 13.4		14.5 14.5 14.5	13.375 9.675 13.375	9.675	Casing String Casing String Liner Hanger
SSSV	2.875		447.0					
Gas Lift Mandrel	2.875		1060.0		735.0	13.375		Casing Shoe
Gas Lift Mandrel	2.875		1615.0					
Nipple	2.875		1630.0					



## Job Events Summary

MAXIS Field Log

### Schlumberger Job Event Summary

Time	Elapsed Time	Depth (M)	File
Log Pass (up)	4-Apr-2007 14:11	000:09	2779.3 - 2717.1 PSP_029LUP
Log Pass (up)	5-Apr-2007 15:19	000:13	2777.3 - 2746.4 PERFO_040LUP
Log Pass (up)	5-Apr-2007 17:32	000:16	2777.8 - 2699.5 PERFO_046LUP
Station Log	5-Apr-2007 17:34	000:06	2767.5 - 0.8 PERFO_047LTP
Log Pass (down)	5-Apr-2007 20:01	000:05	2716.5 - 2773.3 MPBT_053LDP
Simulated Log	5-Apr-2007 20:08	000:28	MPBT_054LUP
Log Pass (up)	5-Apr-2007 20:36	000:04	2773.2 - 2720.0 MPBT_055LUP
Log Pass (up)	5-Apr-2007 22:56	000:09	2773.7 - 2708.3 PERFO_066LUP
Log Pass (up)	6-Apr-2007 0:47	000:07	2774.6 - 2719.6 PERFO_070LUP



# Cement Dump Pass

MAXIS Field Log

## Output DLIS Files

DEFAULT      PERFO\_070LUP      FN:68      PRODUCER      06-Apr-2007 00:47

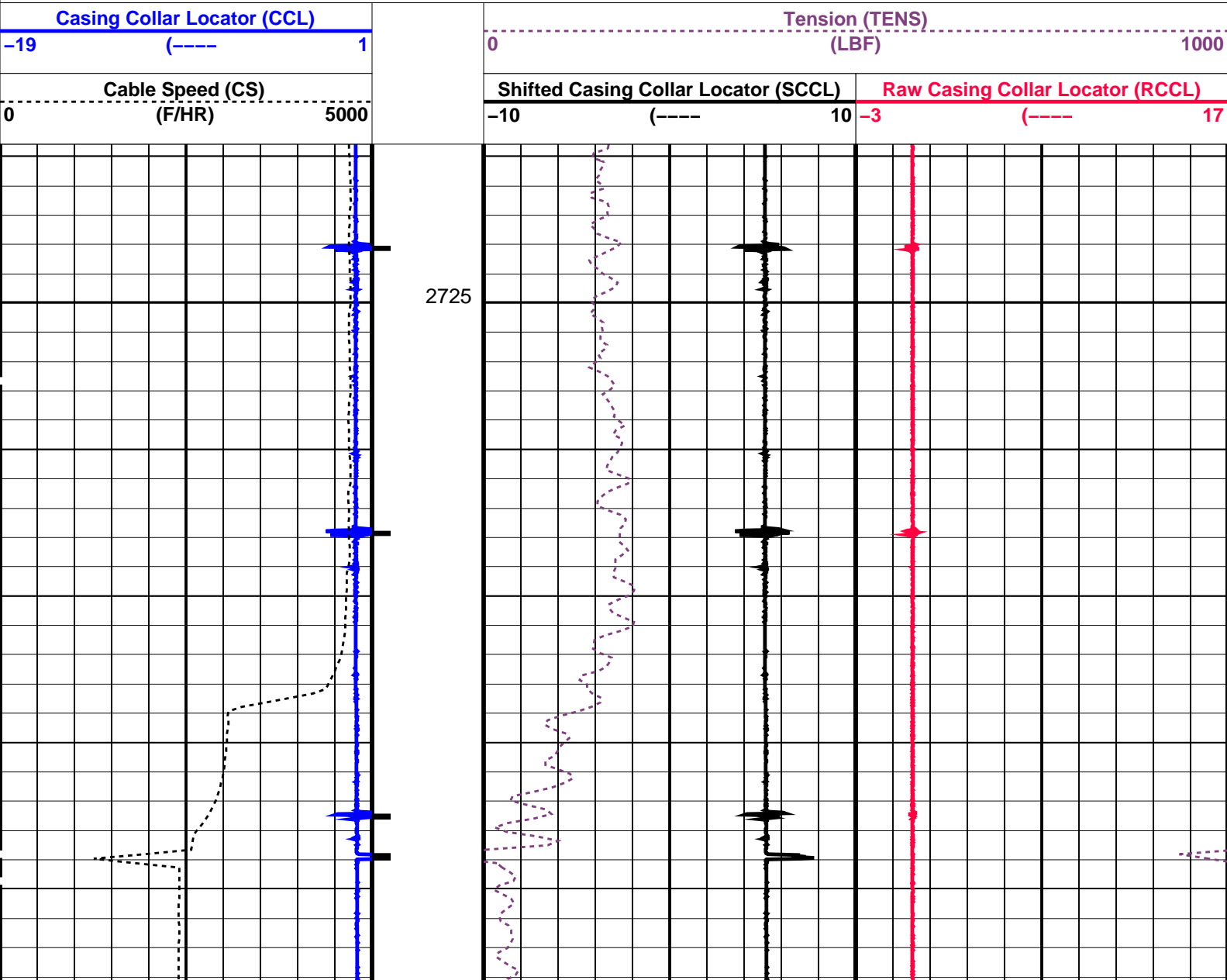
OP System Version: 14C0-302  
MCM

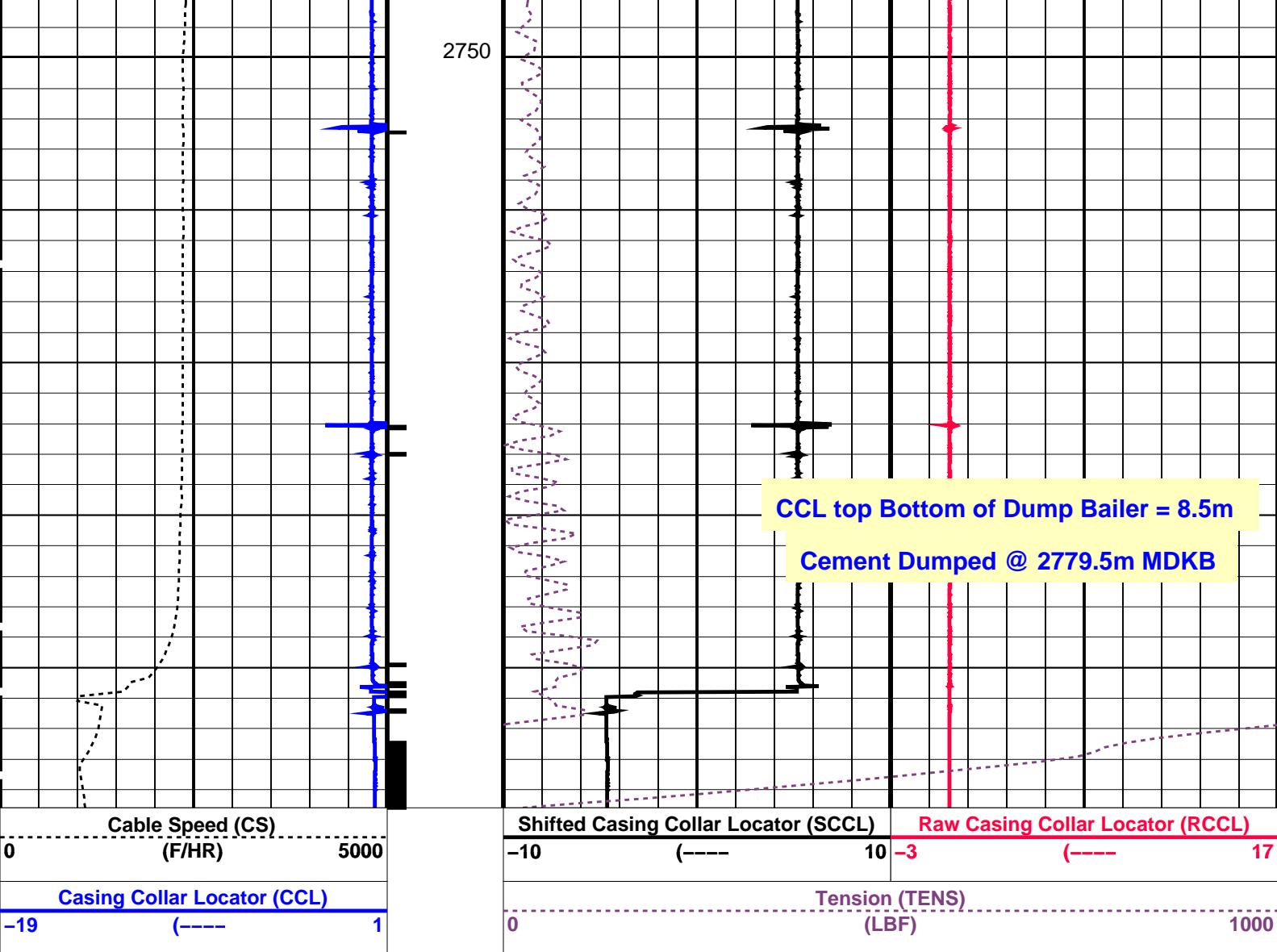
SHM\_GUN      14C0-302      CCL-L      14C0-302

### PIP SUMMARY

└─ Casing Collars

Time Mark Every 60 S





#### PIP SUMMARY

Time Mark Every 60 S

Time Mark Every 60 S

#### Parameters

DLIS Name	Description	Value
CCL-L: Casing Collar Locator		
CCLD	CCL reset delay	12 IN
CCLT	CCL Detection Level	0.3 V

Format: PERFO Vertical Scale: 1:200 Graphics File Created: 06-Apr-2007 00:47

#### OP System Version: 14C0-302

MCM

SHM\_GUN 14C0-302 CCL-L 14C0-302

#### Output DLIS Files

DEFAULT PERFO\_070LUP FN:68 PRODUCER 06-Apr-2007 00:47

Schlumberger

Water Dump Pass

Output DLIS Files

DEFAULT      PERFO\_066LUP      FN:64    PRODUCER    05-Apr-2007 22:56

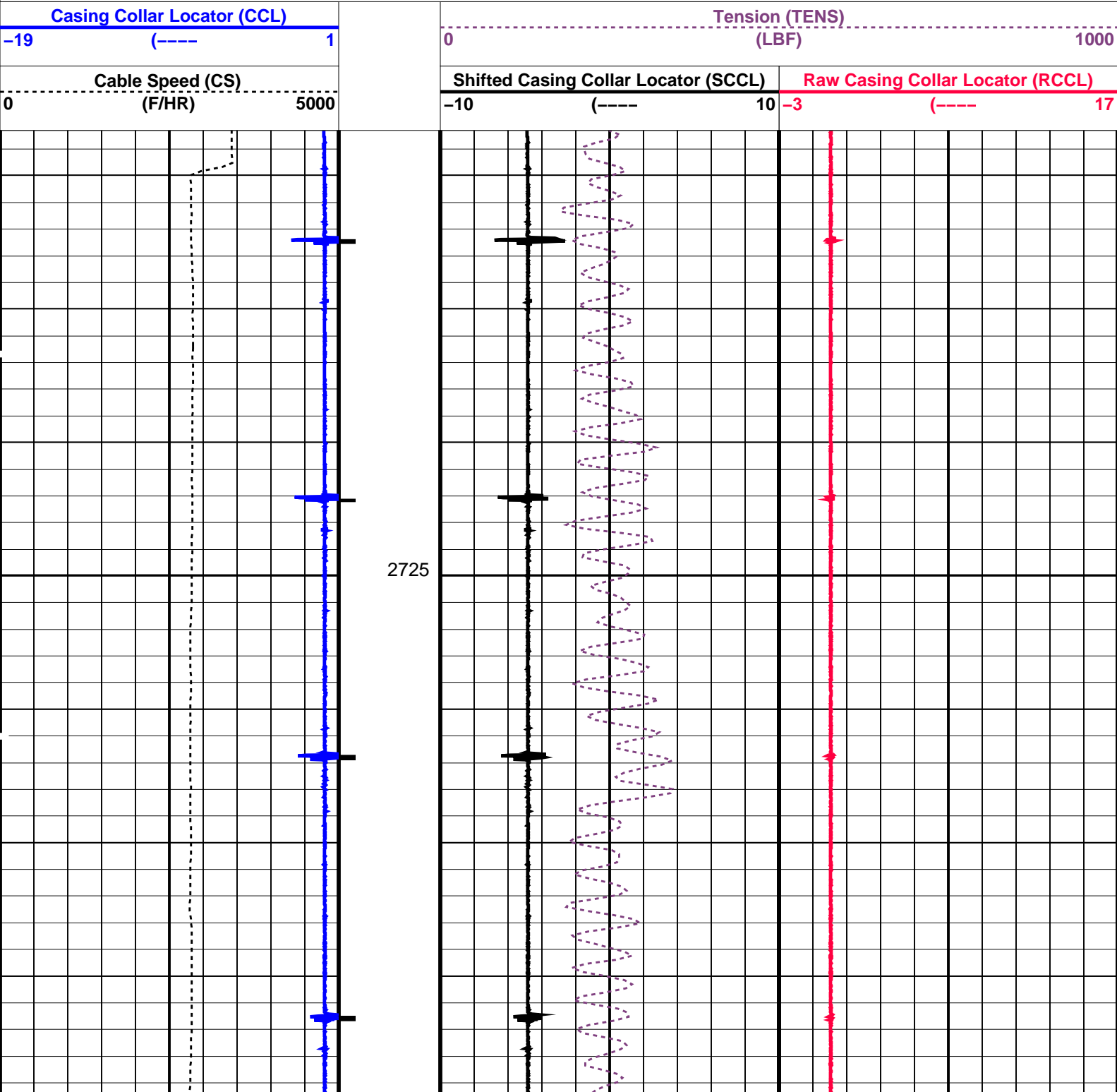
OP System Version: 14C0-302  
MCM

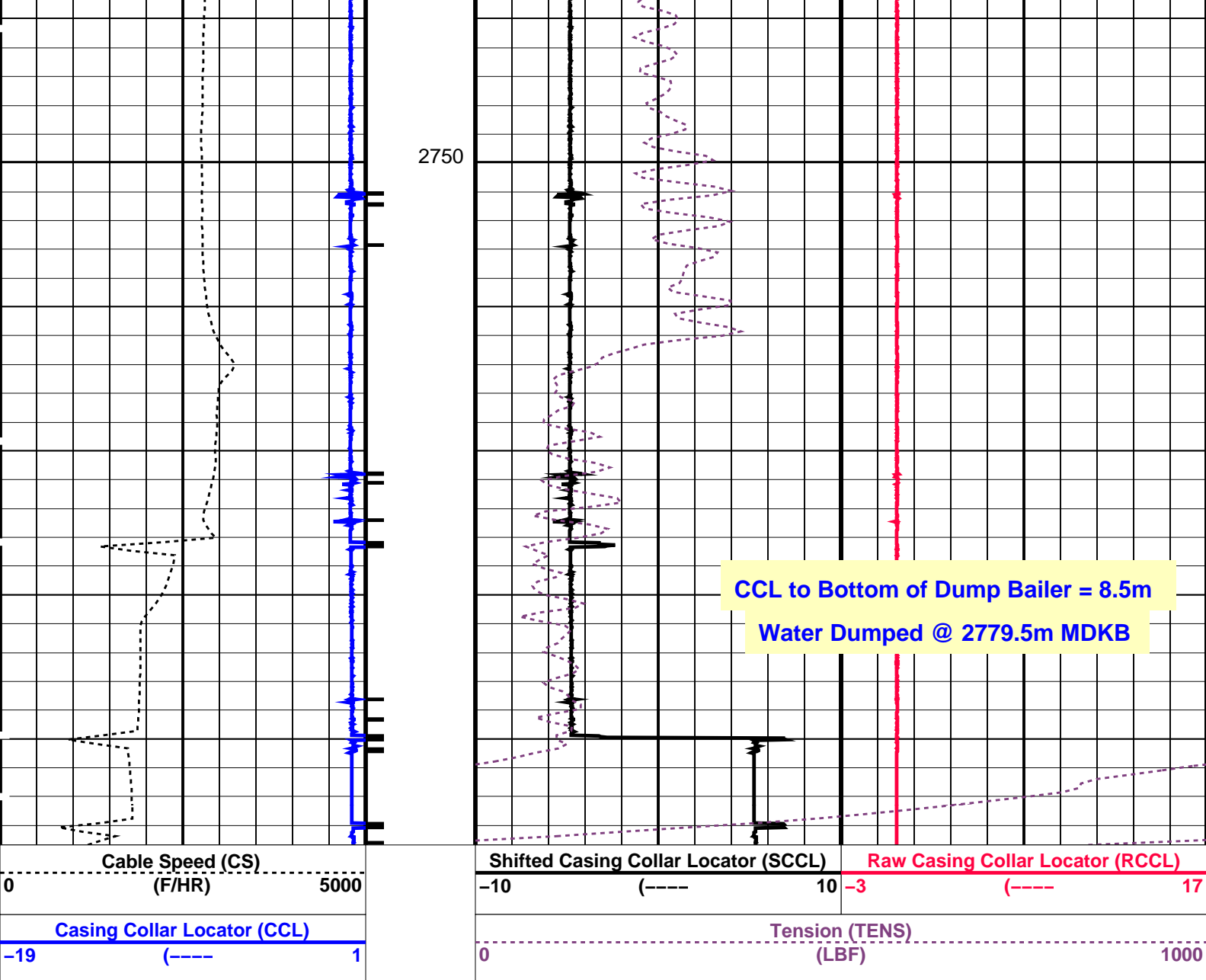
SHM\_GUN      14C0-302      CCL-L      14C0-302

PIP SUMMARY

└─ Casing Collars

 Time Mark Every 60 S





#### PIP SUMMARY

← Casing Collars

Time Mark Every 60 S

#### Parameters

DLIS Name	Description	Value
CCL-L: Casing Collar Locator		
CCLD	CCL reset delay	12 IN
CCLT	CCL Detection Level	0.3 V

Format: PERFO Vertical Scale: 1:200

Graphics File Created: 05-Apr-2007 22:56

OP System Version: 14C0-302

MCM

SHM\_GUN 14C0-302 CCL-L 14C0-302

#### Output DLIS Files

DEFAULT PERFO\_066LUP FN:64 PRODUCER 05-Apr-2007 22:56

## MAXIS Field Log

## Output DLIS Files

DEFAULT

MPBT\_054LUP

FN:53

PRODUCER

05-Apr-2007 20:08

## OP System Version: 14C0-302

MCM

MPEX-AA  
CCL-L14C0-302  
14C0-302

MPSU-BB

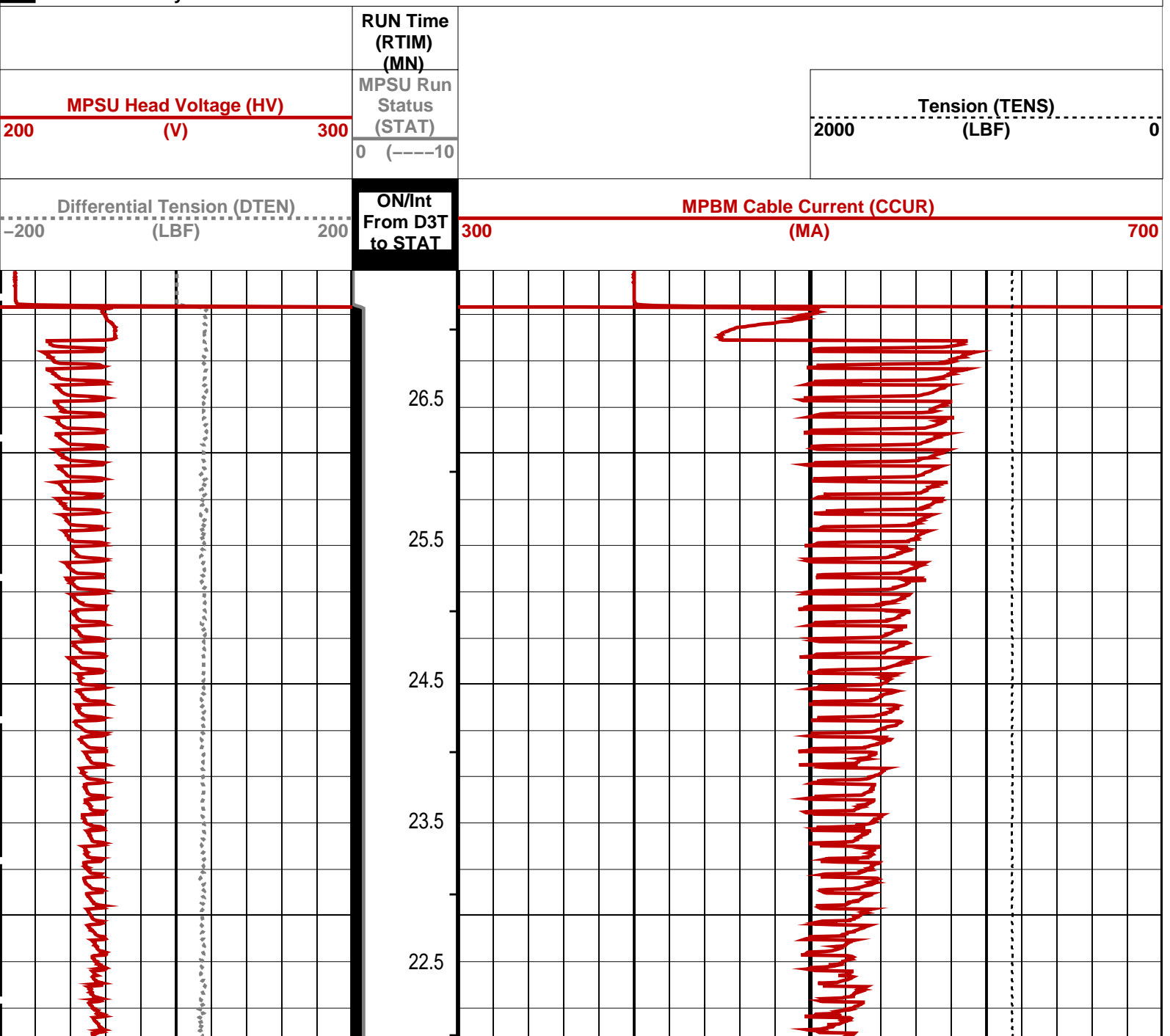
14C0-302

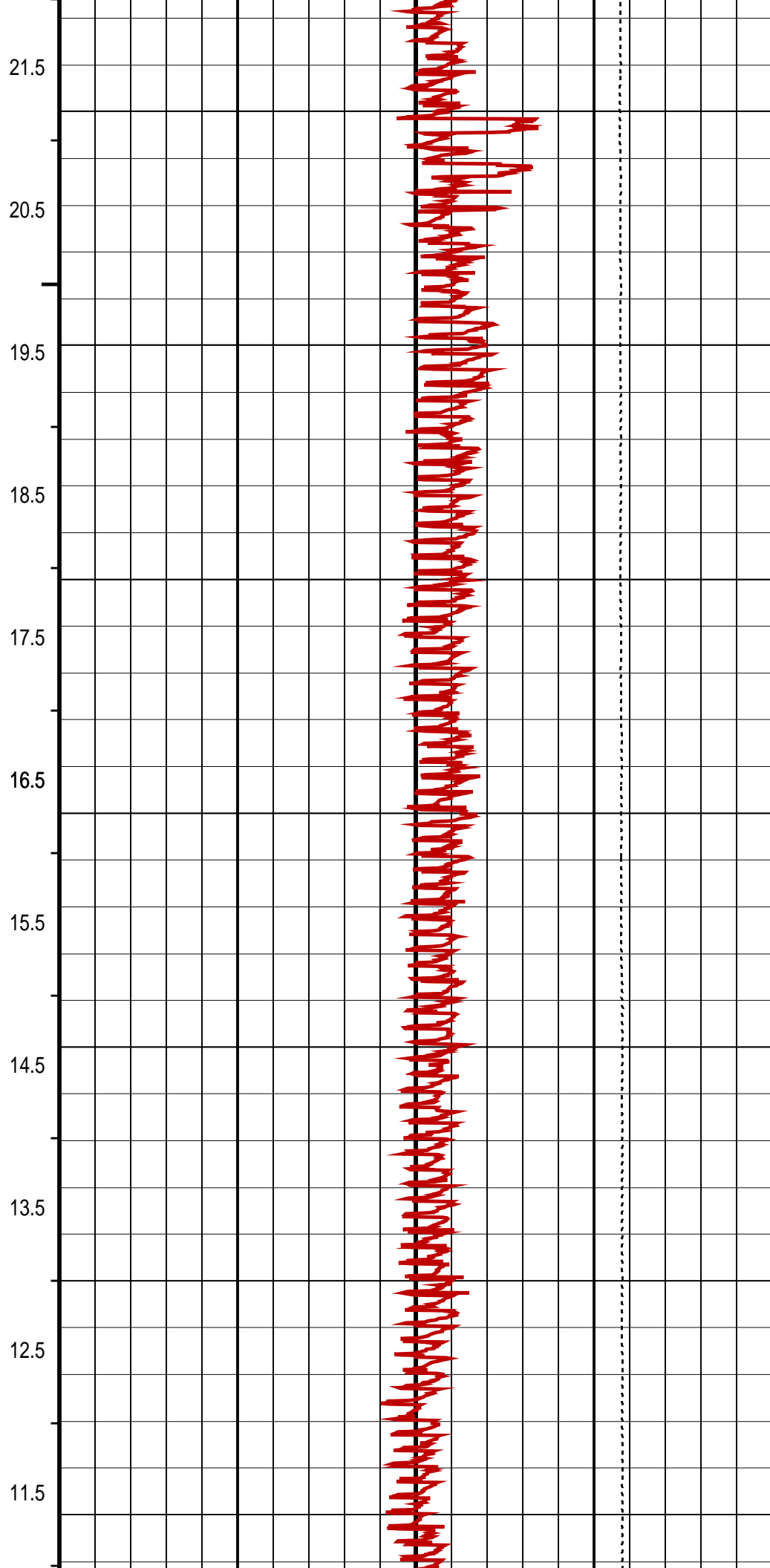
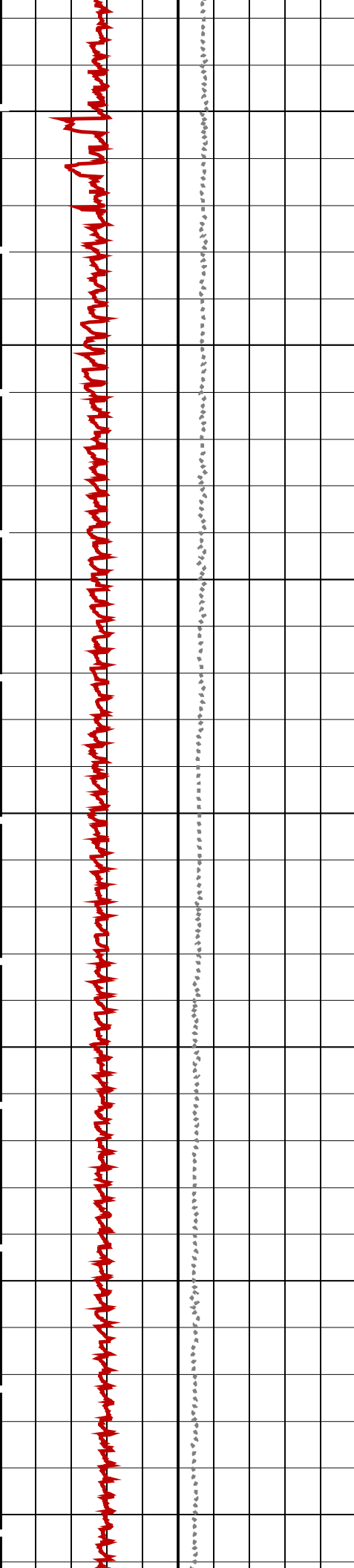
## PIP SUMMARY

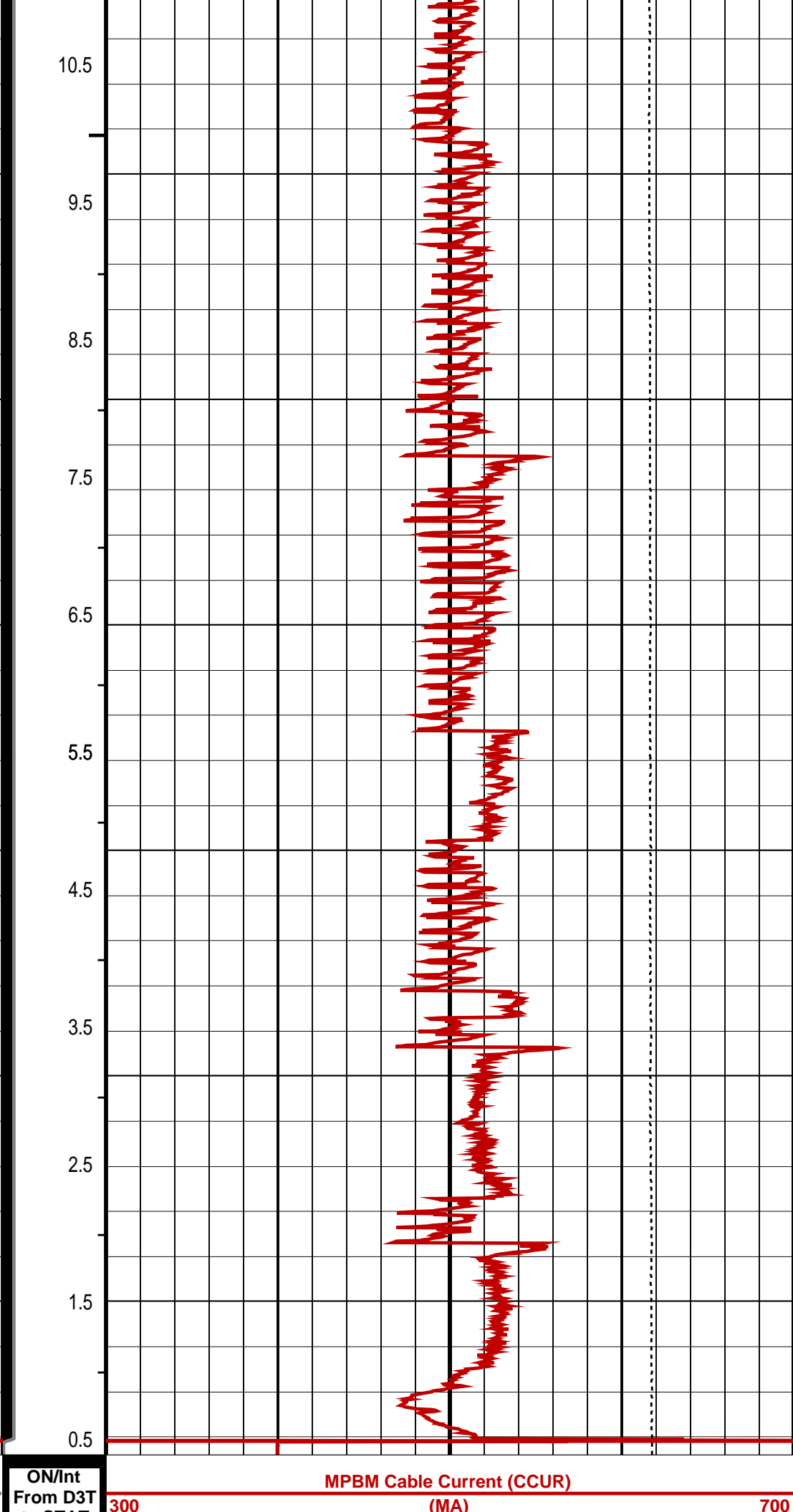
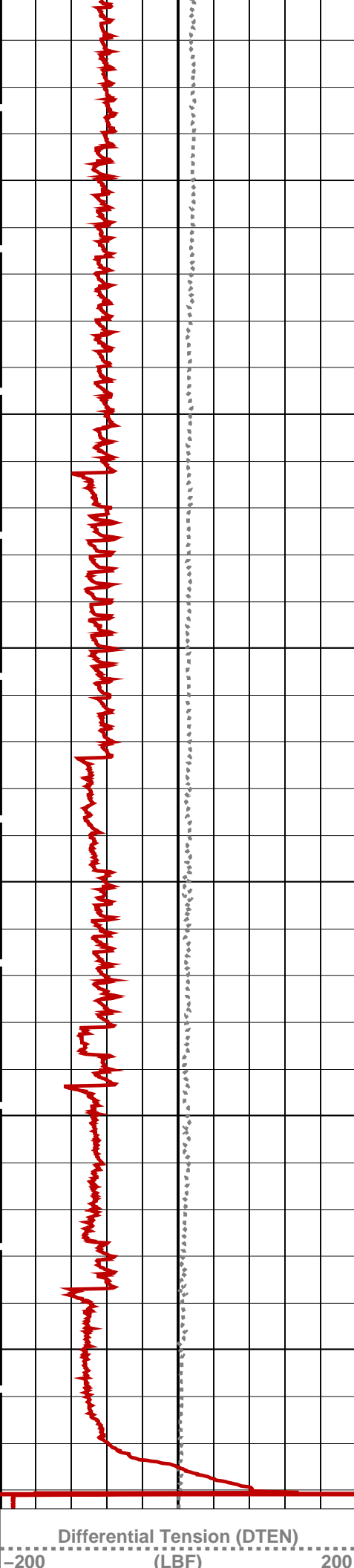
└ MPSU Run Time Every 1 MN

└ MPSU Run Time Every 10 MN

Time Mark Every 60 S








	to STAT	
MPSU Head Voltage (HV) 200 (V) 300	MPSU Run Status (STAT) 0 (----10	Tension (TENS) 2000 (LBF) 0
	RUN Time (RTIM) (MN)	

PIP SUMMARY		
└ MPSU Run Time Every 1 MN		
└ MPSU Run Time Every 10 MN		
Time Mark Every 60 S		
Format: MPBT	Vertical Scale: 1:600	Graphics File Created: 05-Apr-2007 20:08

OP System Version: 14C0-302			
MCM			
MPEX-AA	14C0-302	MPSU-BB	14C0-302
CCL-L	14C0-302		
Output DLIS Files			
DEFAULT	MPBT_054LUP	FN:53	PRODUCER 05-Apr-2007 20:08

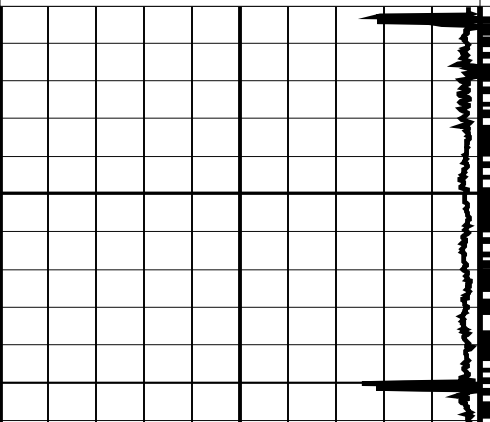
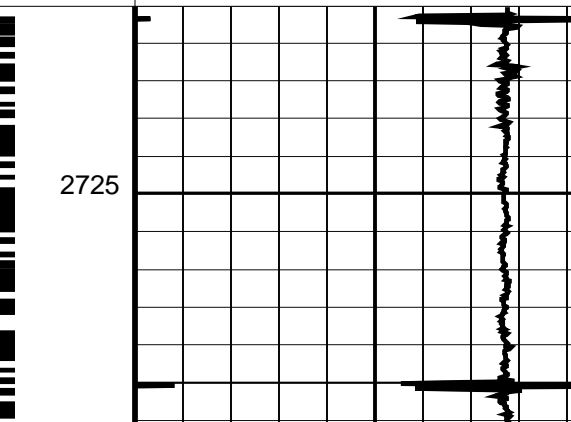
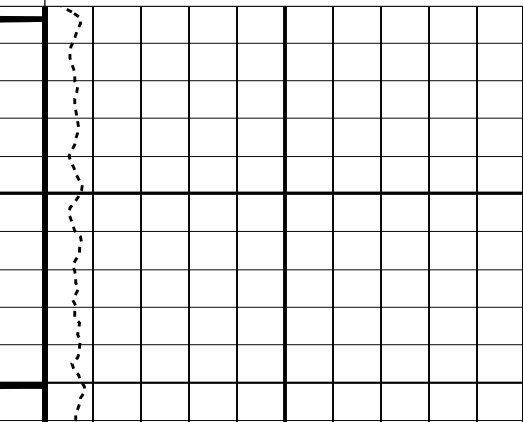


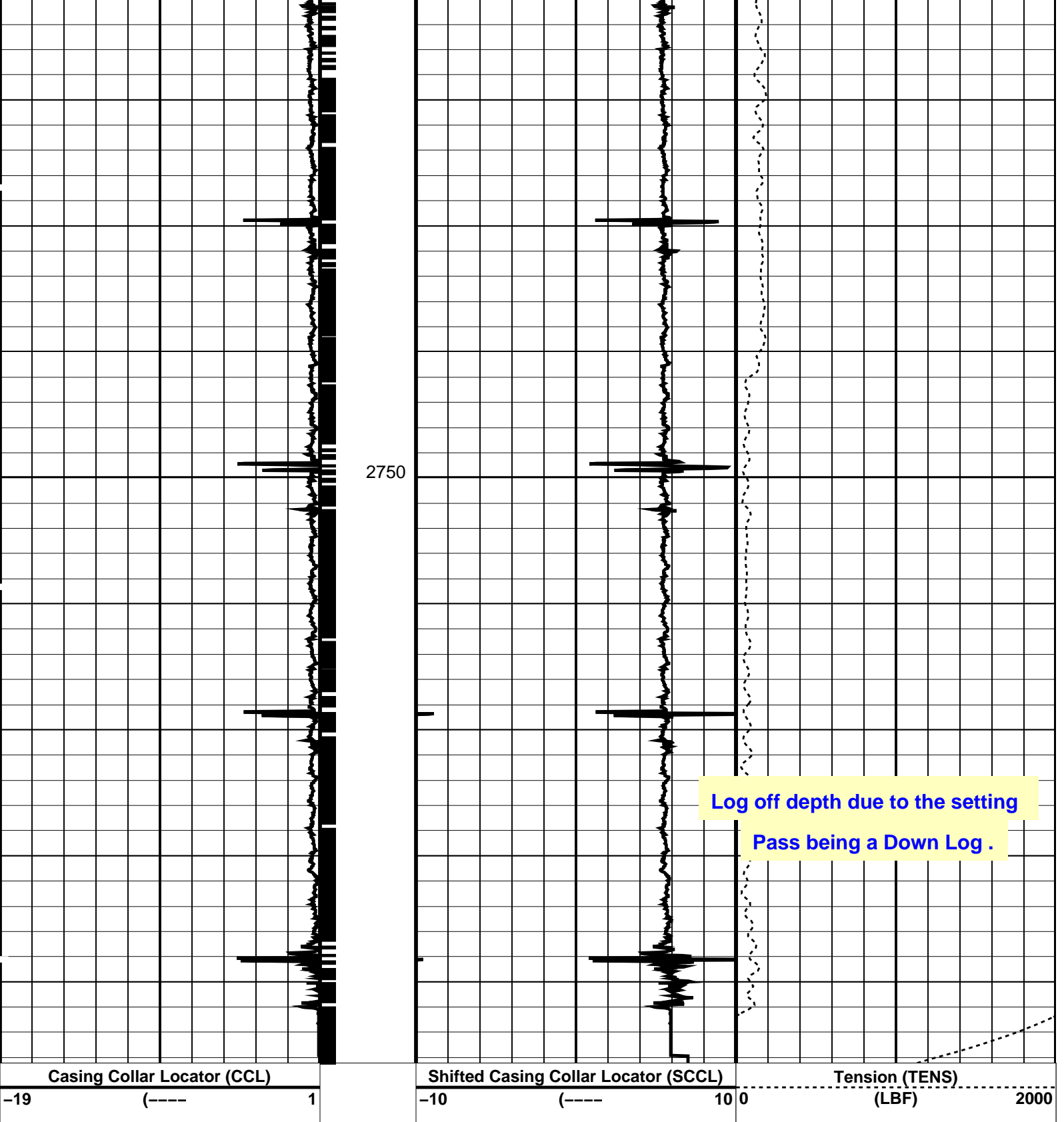
Log Away From  
Plug Setting

MAXIS Field Log

Output DLIS Files			
DEFAULT	MPBT_055LUP	FN:54	PRODUCER 05-Apr-2007 20:36
OP System Version: 14C0-302			
MCM			
MPEX-AA	14C0-302	MPSU-BB	14C0-302
CCL-L	14C0-302		

PIP SUMMARY	
└ Casing Collars	
Time Mark Every 60 S	

Casing Collar Locator (CCL) -19 (---- 1	Shifted Casing Collar Locator (SCCL) -10 (---- 10 0	Tension (TENS) (LBF) 2000
		
2725		



#### PIP SUMMARY

Time Mark Every 60 S

← Casing Collars

#### Parameters

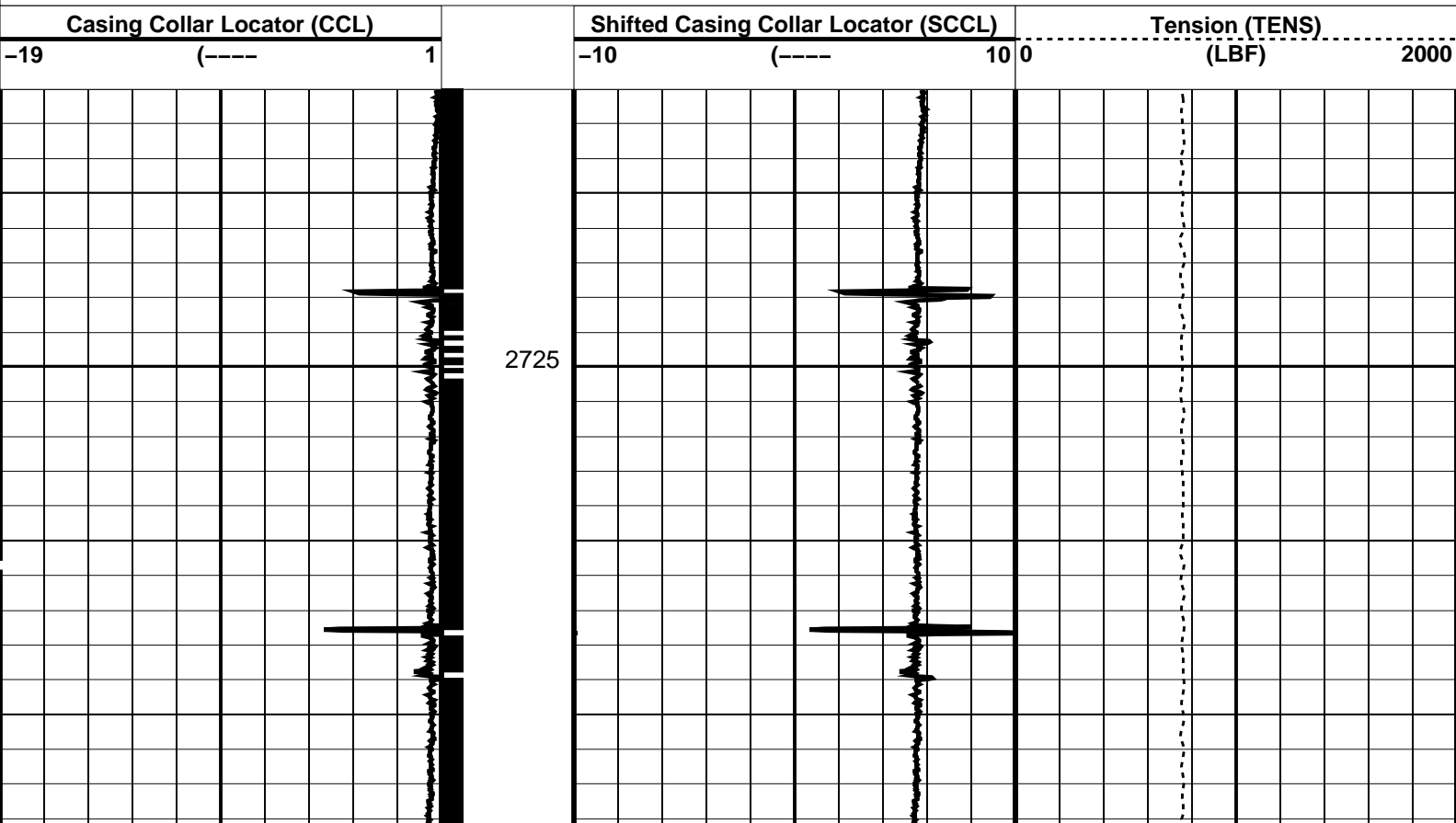
DLIS Name	Description	Value
CCLD	CCL-L: Casing Collar Locator	12 IN
CCLT	CCL reset delay	0.3 V
	CCL Detection Level	

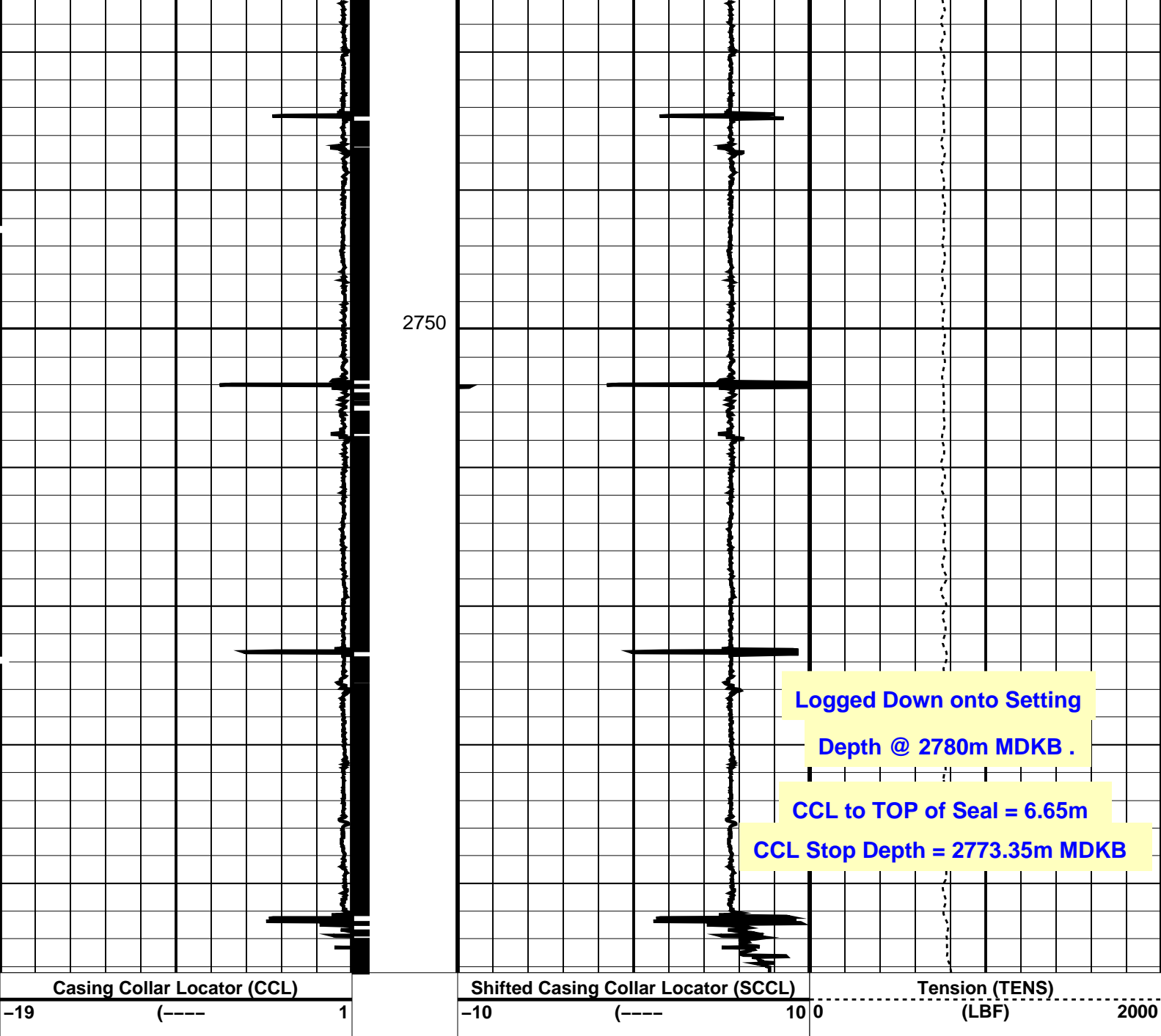
Schlumberger

Plug Correlation Pass

MAXIS Field Log

Input DLIS Files					
DEFAULT	Flip_MPBT_057LUP	PRODUCER	05-Apr-2007 20:51	2773.3 M	2716.5 M
Output DLIS Files					
DEFAULT	MPBT_058PUP	FN:56	PRODUCER	05-Apr-2007 20:55	2773.2 M2717.0 M





#### PIP SUMMARY

└─ Casing Collars

■ Time Mark Every 60 S

### Parameters

DLIS Name	Description	Value	
CCLD CCLT	CCL-L: Casing Collar Locator	12	IN
	CCL reset delay	0.3	V
	CCL Detection Level	0.0	M
System and Miscellaneous		NORMAL	
DO	Depth Offset for Playback	0.0	M
PP	Playback Processing	NORMAL	

Format: PERFO Vertical Scale: 1:200

Graphics File Created: 05-Apr-2007 20:55

OP System Version: 14C0-302  
MCM

MPEX-AA	14C0-302	MPSU-BB	14C0-302
CCL-L	14C0-302		

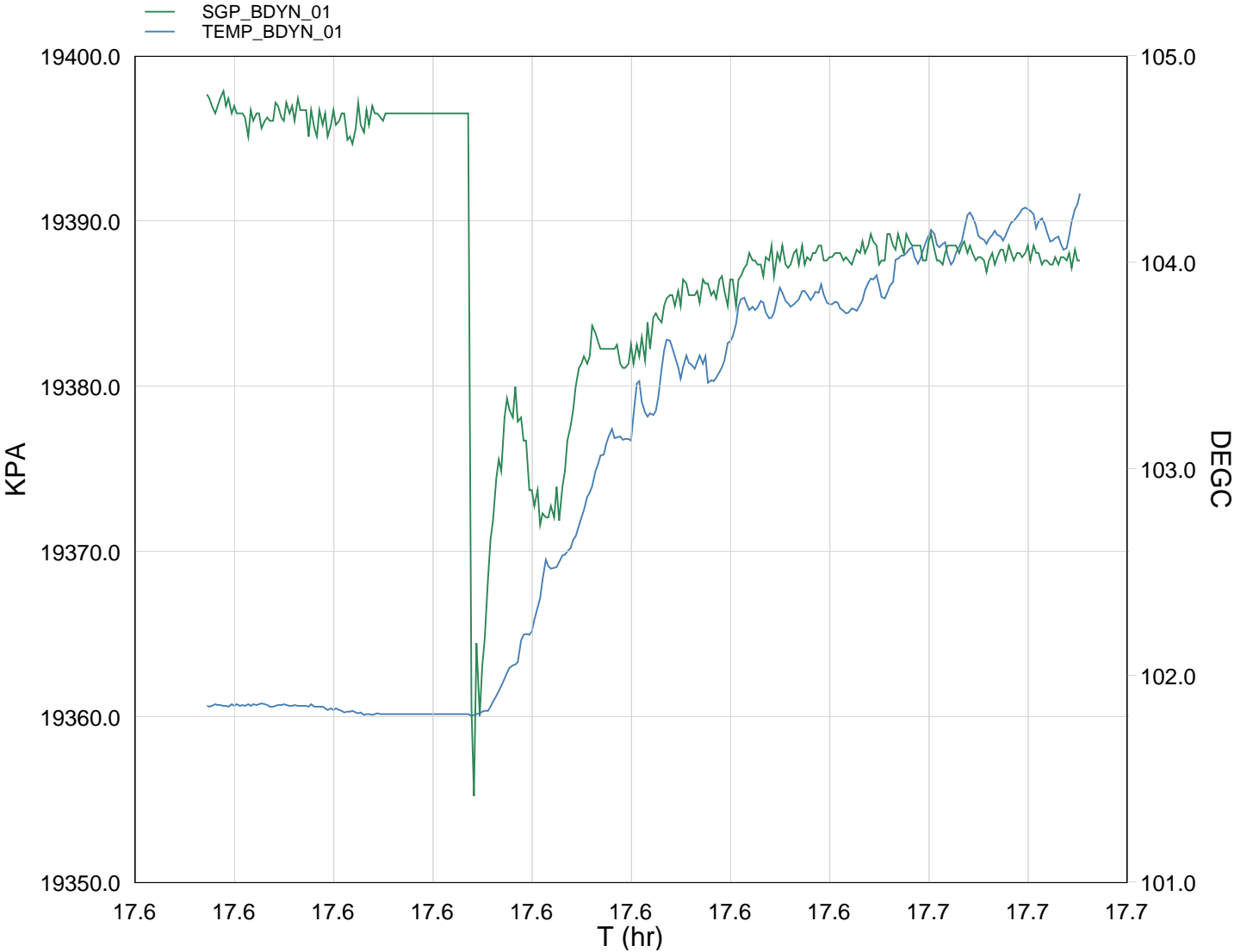
Input DLIS Files

Output DLIS Files



Gun # 1  
2771m to 2774.5m MDKB

MAXIS Field Log



TIME    TEMP\_MWPT\_S    SGPA\_SL

1920.0	215.29	2813.415
1940.0	215.35	2813.174
1960.0	215.34	2813.045

1960.0	215.34	2813.045
1980.0	215.26	2813.079
2000.0	215.27	2813.233
2020.0	215.26	2807.324
2040.0	215.96	2809.929
2060.0	217.05	2811.097
2080.0	218.17	2811.101
2100.0	218.28	2811.643
2120.0	218.79	2811.984
2140.0	218.96	2811.904
2160.0	218.84	2812.018
2180.0	219.25	2812.067
2200.0	219.64	2812.070
2220.0	219.68	2812.003
2240.0	219.80	2811.941

Schlumberger

Gun # 1  
Shoot Pass

MAXIS Field Log

Company: Esso Australia Pty LtdWell: A-7

Output DLIS Files

DEFAULTPERFO\_046LUPFN:45PRODUCER05-Apr-2007 17:322777.8 M2699.5 M

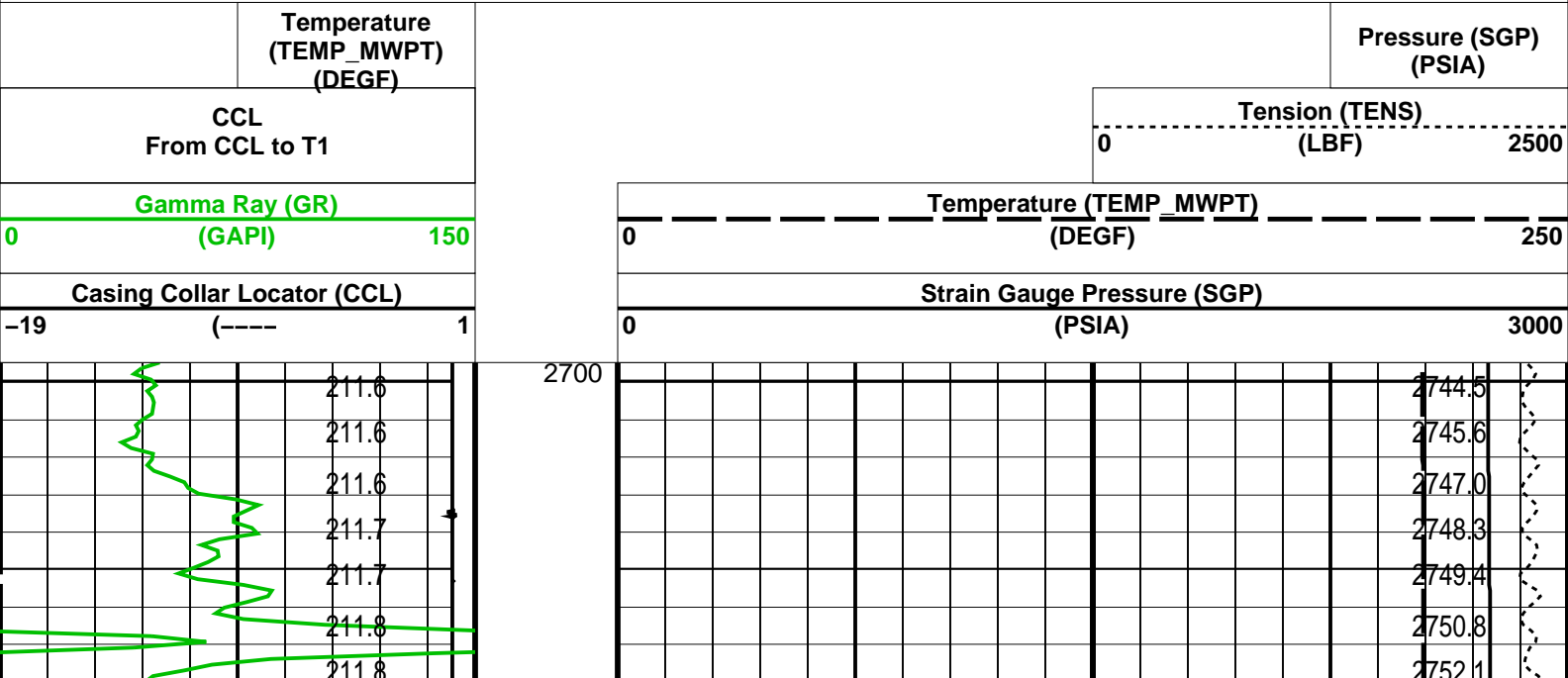
OP System Version: 14C0-302

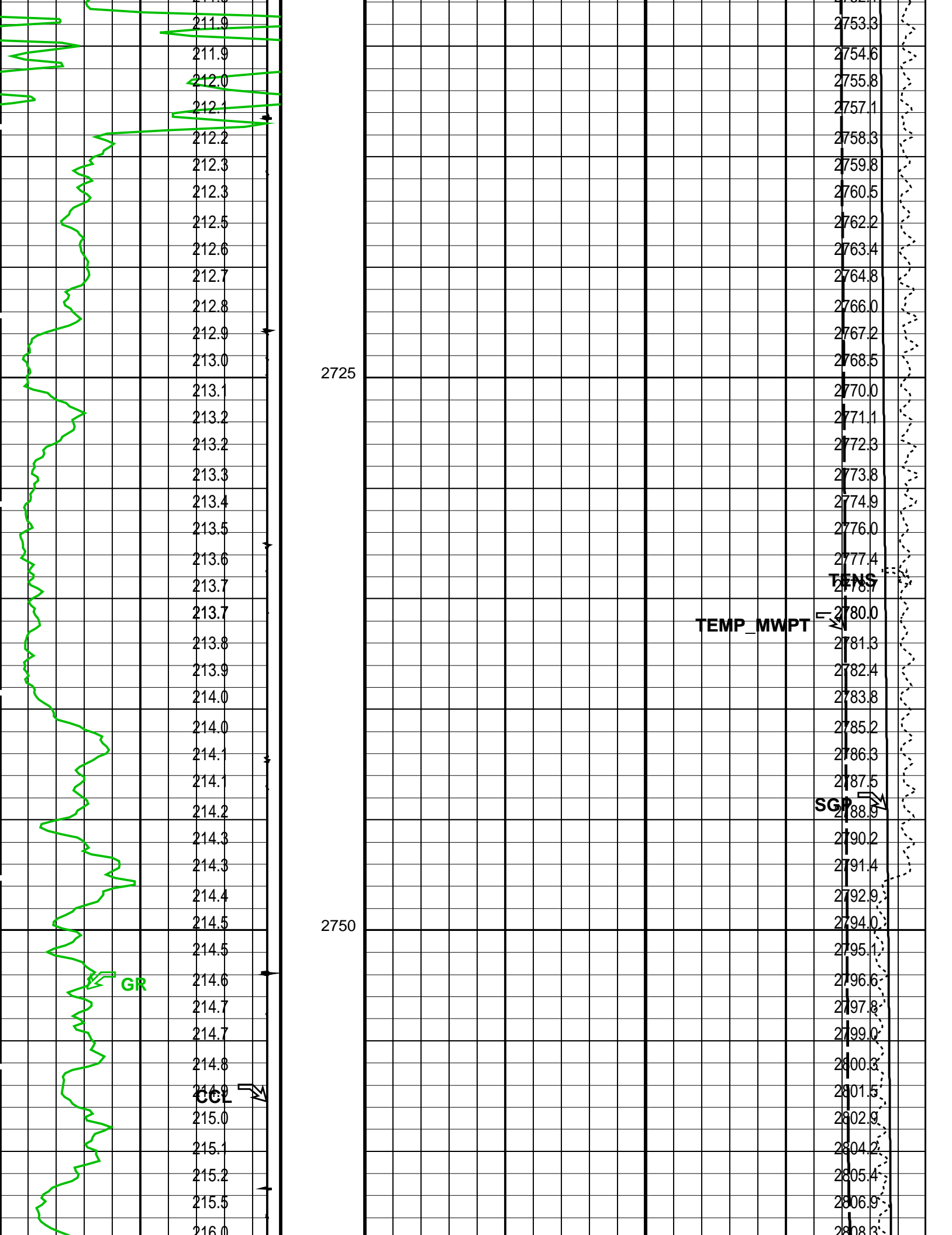
MCM

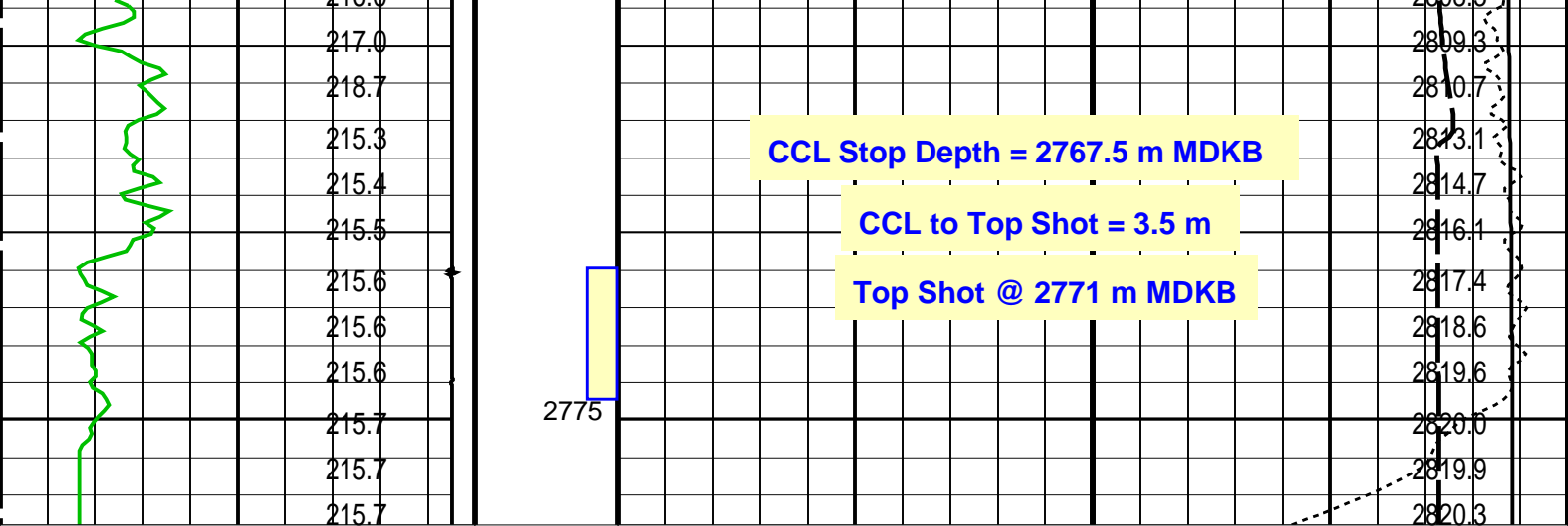
MWP\_GUN14C0-302MWPT-CA14C0-302  
MWGT-AA14C0-302

PIP SUMMARY

Time Mark Every 60 S







Casing Collar Locator (CCL)		Strain Gauge Pressure (SGP)	
-19	(----) 1	0	(PSIA) 3000
Gamma Ray (GR)		Temperature (TEMP_MWPT)	
0	(GAPI) 150	0	(DEGF) 250
CCL From CCL to T1		Tension (TENS) (LBF) 2500	
Temperature (TEMP_MWPT) (DEGF)		Pressure (SGP) (PSIA)	

#### PIP SUMMARY

Time Mark Every 60 S

#### Parameters

DLIS Name	Description	Value
MWPT-CA: MEASUREMENT WHILE PERFORATING TOOL		
DEVI_FL_CORR	Deviation Angle for Flow Line Correction	0 DEG
FLD	Flow Line Density	1 G/C3
MWPT_NULL_SOURCE	MWPT NULL Temperature Source	TEMS
MWPT_NULL_TEMP	MWPT NULL Temperature	0.0 DEGC

Format: MWP Vertical Scale: 1:200 Graphics File Created: 05-Apr-2007 17:32

#### OP System Version: 14C0-302 MCM

MWP_GUN	14C0-302	MWPT-CA	14C0-302
MWGT-AA	14C0-302		

#### Output DLIS Files

DEFAULT PERFO\_046LUP FN:45 PRODUCER 05-Apr-2007 17:32

**Schlumberger**

Correlation Pass

MAXIS Field Log

OP System Version: 14C0-302

MCM

MWP\_GUN14C0-302

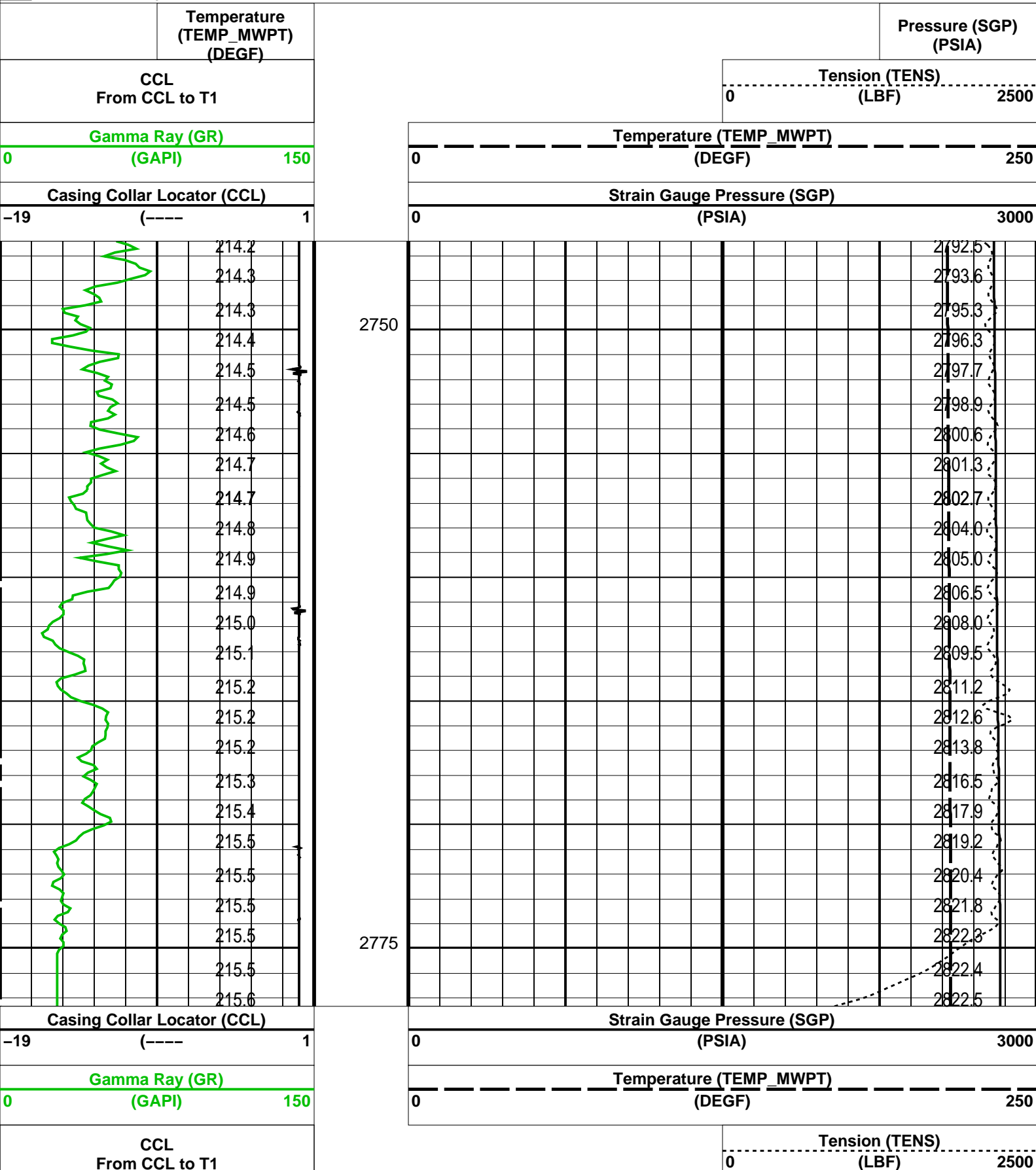
MWGT-AA14C0-302


MWPT-CA

14C0-302

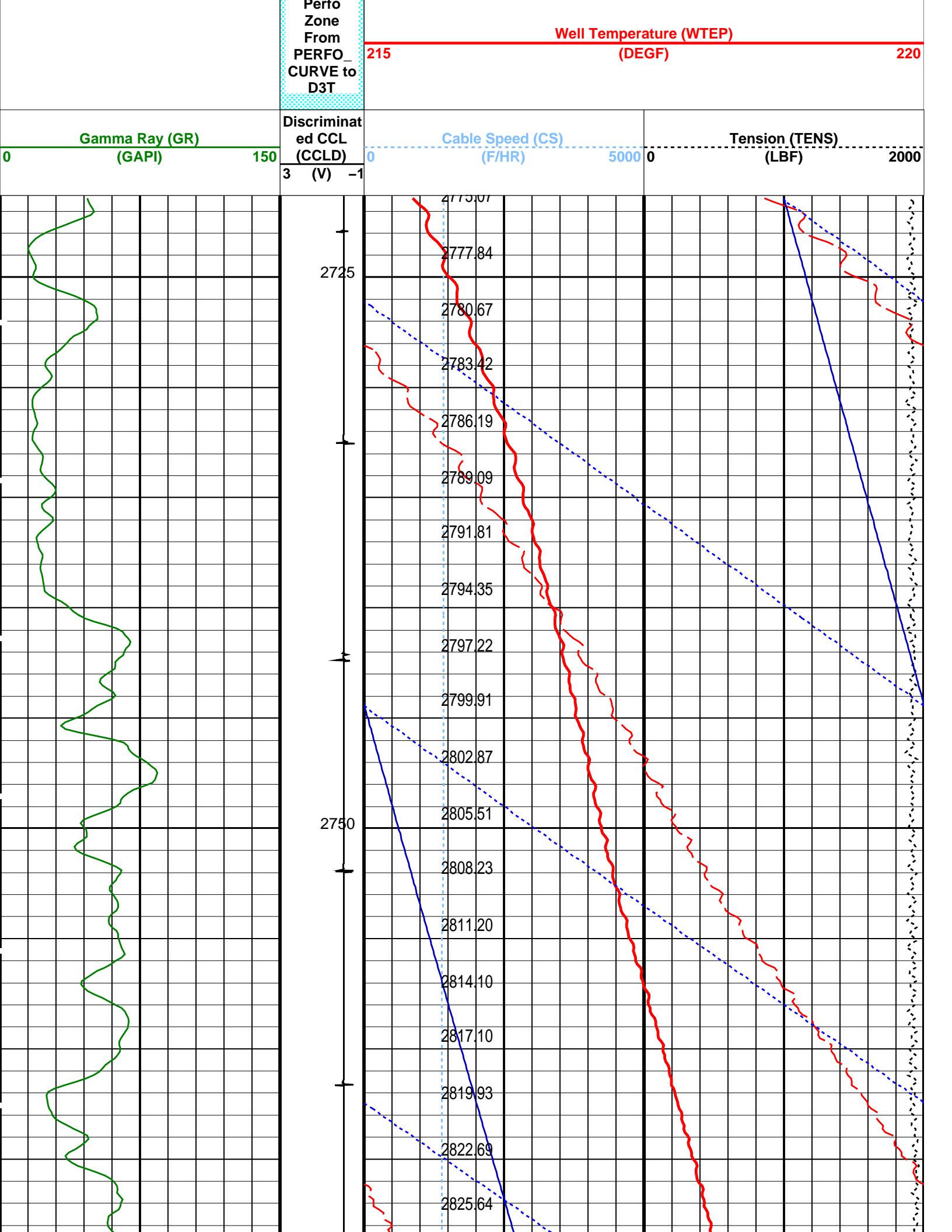
PIP SUMMARY

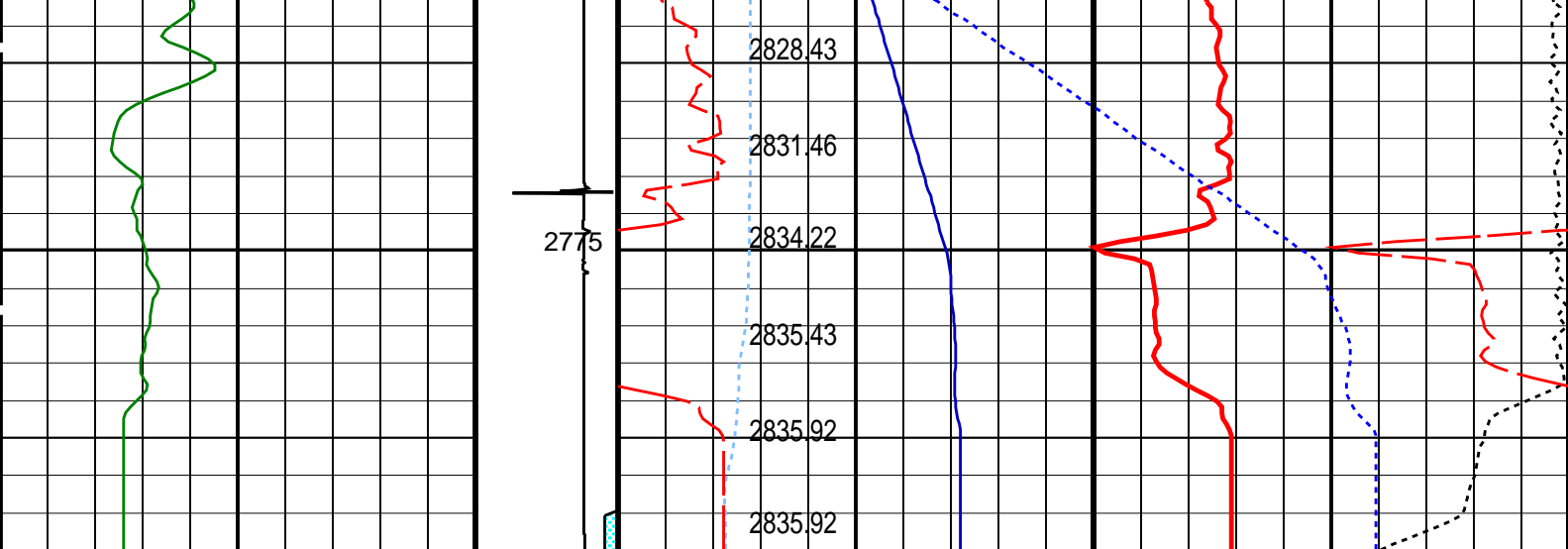
Time Mark Every 60 S



	Temperature (TEMP_MWPT) (DEGF)			Pressure (SGP) (PSIA)
PIP SUMMARY				
Time Mark Every 60 S				
Parameters				
DLIS Name	Description	Value		
MWPT-CA: MEASUREMENT WHILE PERFORATING TOOL				
DEVI_FL_CORR	Deviation Angle for Flow Line Correction	0	DEG	
FLD	Flow Line Density	1	G/C3	
MWPT_NULL_SOURCE	MWPT NULL Temperature Source	TEMS		
MWPT_NULL_TEMP	MWPT NULL Temperature	0.0	DEGC	
Format: MWP	Vertical Scale: 1:200	Graphics File Created: 05-Apr-2007 15:19		
OP System Version: 14C0-302				
MCM				
MWP_GUN	14C0-302	MWPT-CA	14C0-302	
MWGT-AA	14C0-302			
Output DLIS Files				
DEFAULT	PERFO_040LUP	FN:39	PRODUCER	05-Apr-2007 15:19
<div><div></div><div>4 1/2" Dummy Plug Pass</div></div>				
MAXIS Field Log				

Company: Esso Australia Ltd Pty.				Well: A-7	
Input DLIS Files					
DEFAULT	PSP_029LUP	FN:28	PRODUCER	04-Apr-2007 14:11	2779.3 M 2717.1 M
Output DLIS Files					
DEFAULT	PSP_030PUP	FN:29	PRODUCER	04-Apr-2007 14:22	2783.0 M 2721.3 M
OP System Version: 14C0-302					
MCM					
PSPT-A/B	14C0-302				
PIP SUMMARY					
Time Mark Every 60 S					
		Amplified Well Pressure (WPRE)			
		0 (PSIA) 20			
		Well Pressure (WPRE)			
		2800 (PSIA) 2900			
		Well Temperature (WTEP)			
		0 (DEGF) 2			
		Well Pressure (WPRE) (PSIA)			





Gamma Ray (GR) (GAPI)	Discriminat ed CCL (CCLD)	Cable Speed (CS) (F/HR)	Tension (TENS) (LBF)
0 150	3 (V) -1	0 5000	0 2000

Perfo Zone From PERFO CURVE to D3T	Well Temperature (WTEP) (DEGF)	
	215	220

Well Pressure (WPRE) (PSIA)	Well Temperature (WTEP) (DEGF)	
	0	2
Well Pressure (WPRE) (PSIA)		
2800		2900
Amplified Well Pressure (WPRE) (PSIA)		
0		20

### PIP SUMMARY

Time Mark Every 60 S

Format: PSP\_1 Vertical Scale: 1:200 Graphics File Created: 04-Apr-2007 14:22

OP System Version: 14C0-302  
MCM

PSPT-A/B 14C0-302

Parameters		
DLIS Name	Description	Value
DO PP	System and Miscellaneous Depth Offset for Playback Playback Processing	3.7 M NORMAL

Input DLIS Files						
DEFAULT	PSP_029LUP	FN:28	PRODUCER	04-Apr-2007 14:11	2779.3 M	2717.1 M

Output DLIS Files						
DEFAULT	PSP_030PUP	FN:29	PRODUCER	04-Apr-2007 14:22		

Well: **A-7**  
Field: **Tuna**  
Rig: **Crane/Prod 4**  
Country: **Australia**

MWPT 2 1/8" Enerjet Perforation  
4 1/2" Posiset Plug  
GR Survey