

Company : Anzon Australia Pty Ltd

Well : Basker-7

Interval : 145.00 - 3944.51 meters

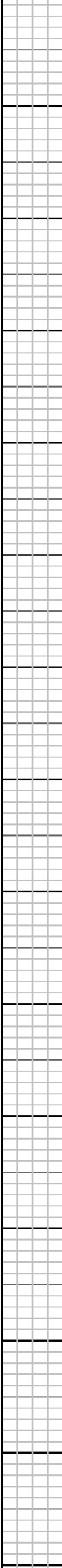
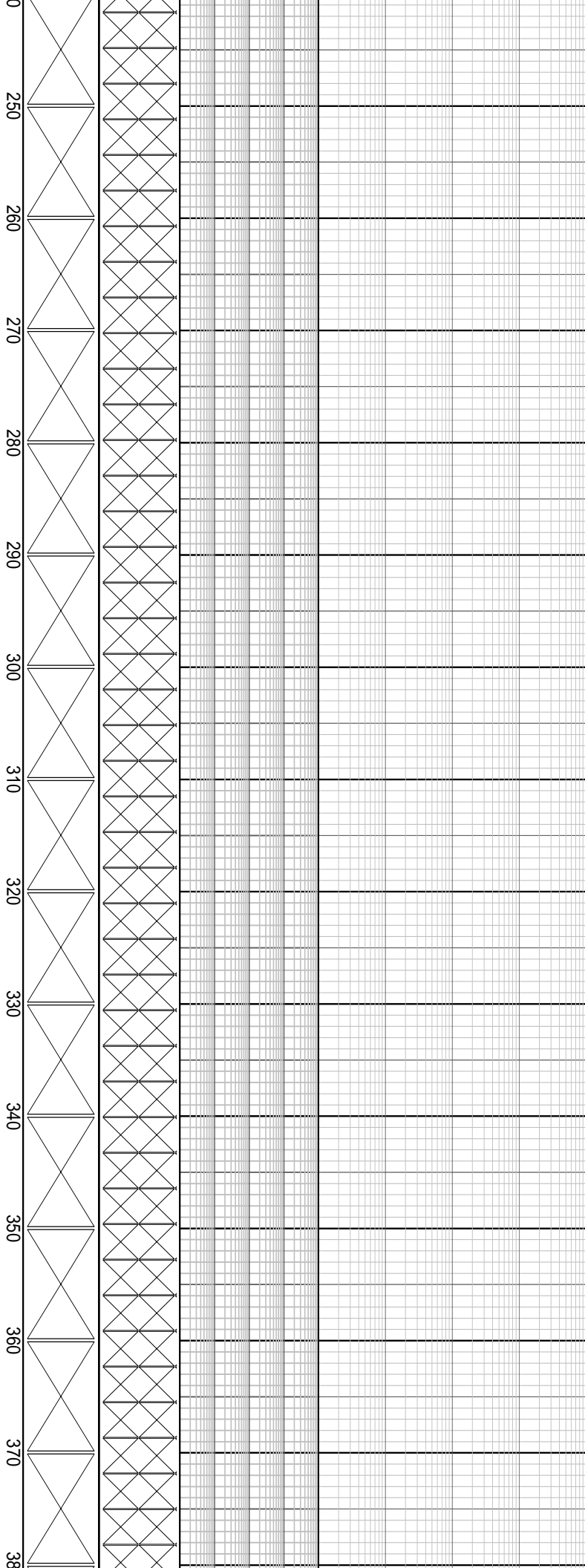
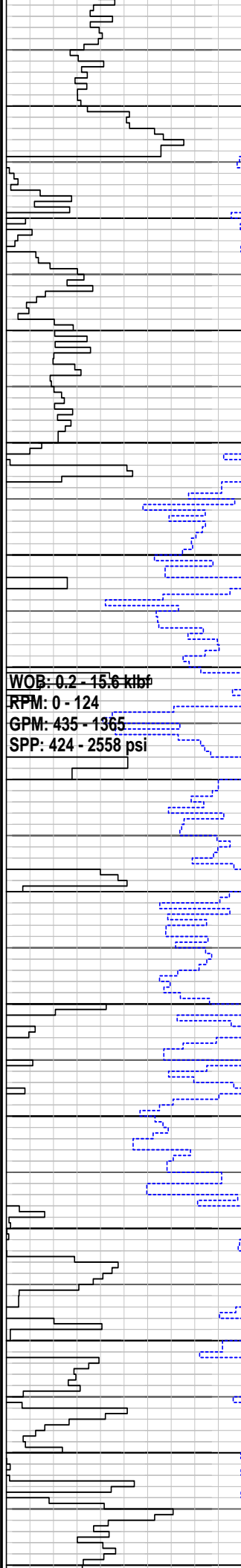
Created : 06/Aug/2009 5:10:06 AM



INTEQ

FORMATION EVALUATION LOG

[illegible]



Drill with seawater and hi-vis sweeps
Returns to Seabed

MD: 255.43m Inc: 0.36°
Azi: 74.37° TVD: 255.43m

MD: 284.01m Inc: 0.78°
Azi: 284.01° TVD: 284.01m

MD: 312.87m Inc: 1.11°
Azi: 151.68° TVD: 312.86m

MD: 342.04m Inc: 1.83°
Azi: 152.30° TVD: 342.02m

MD: 370.47m Inc: 3.26°
Azi: 148.51° TVD: 370.43m

WOB: 0.1 - 8.9 klbf
RPM: 52 - 230
GPM: 616 - 1240
SPP: 519 - 2562 psi

WOB: 0.6 - 31.4 klbf
RPM: 77 - 264
GPM: 707 - 1421
SPP: 915 - 2769 psi

Drill with seawater and hi-vis
sweeps

Returns to Seabed

MD: 399.01m Inc: 4.39°
Azi: 145.48° TVD: 398.91m

MD: 426.67m Inc: 6.45°
Azi: 150.06° TVD: 426.44m

MD: 455.70m Inc: 8.55°
Azi: 155.30° TVD: 455.22m

MD: 484.37m Inc: 10.63°
Azi: 155.06° TVD: 483.49m

Drill with seawater and hi-vis
sweeps

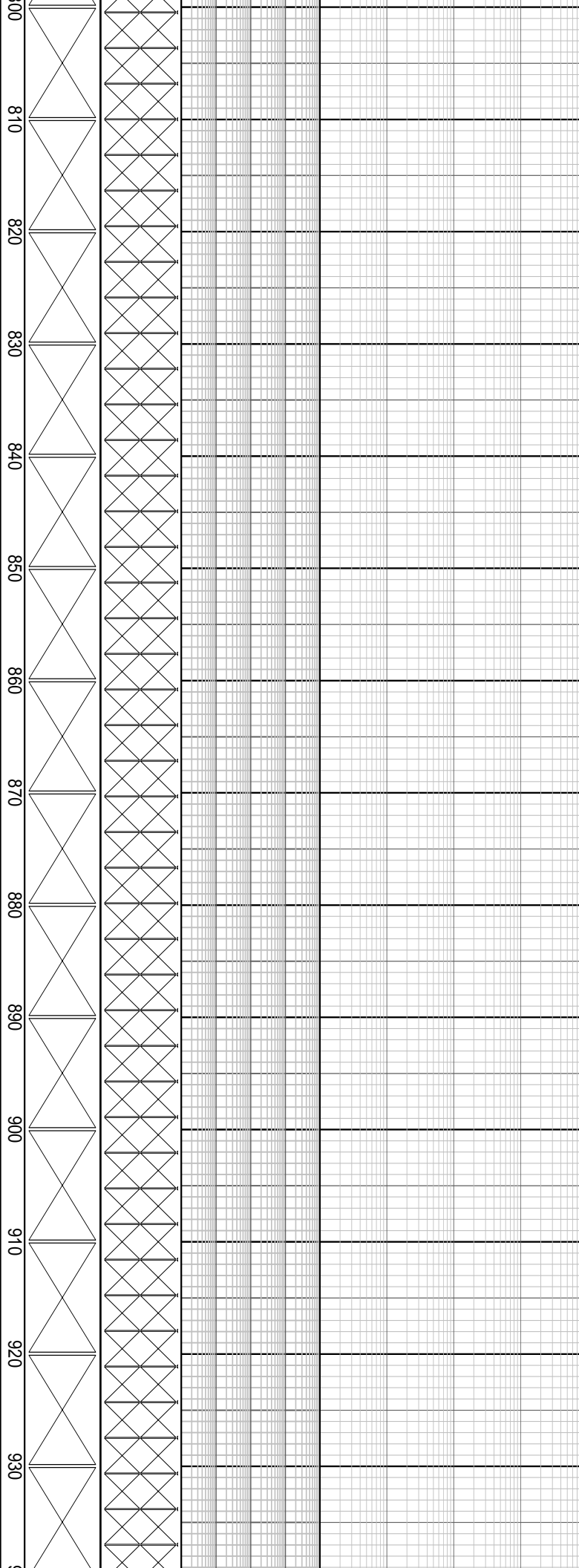
Returns to Seabed

MD: 513.87m Inc: 12.47°
Azi: 153.23° TVD: 512.39m

WOB: 0.3 - 31.7 klf
RPM: 0 - 122
GPM: 924 - 1283
SPP: 2082 - 3735 psi

WOB: 0.7 - 33.9 klf
RPM: 120 - 240
GPM: 1108 - 1227
SPP: 2833 - 3889 psi

23 July 2009
24 July 2009



MD: 799.88m Inc: 33.24°
Azi: 154.47° TVD: 769.98m

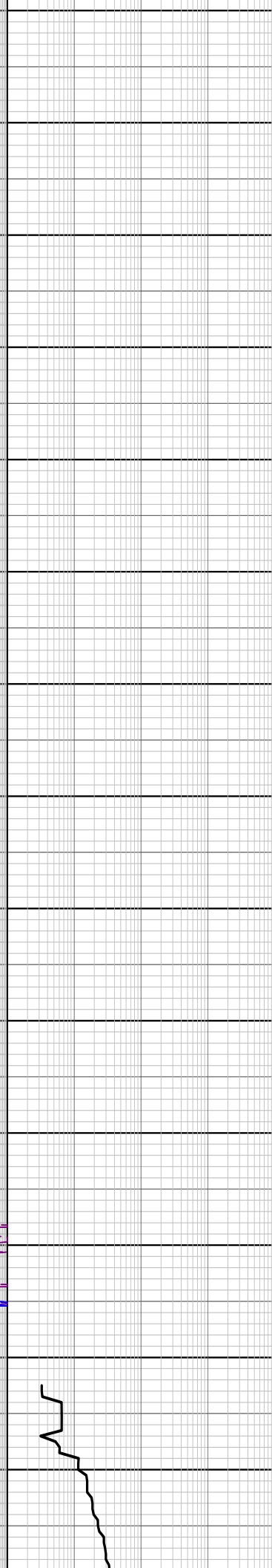
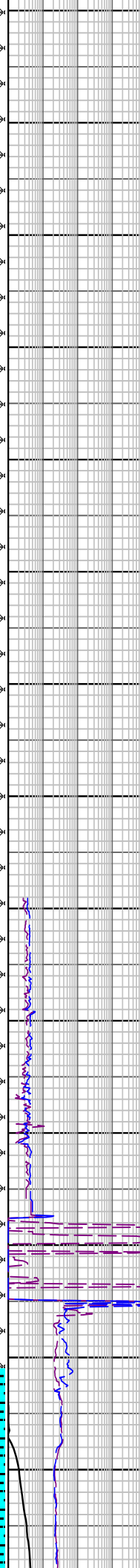
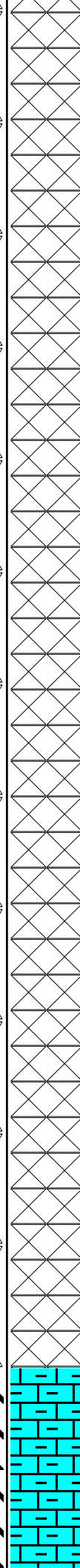
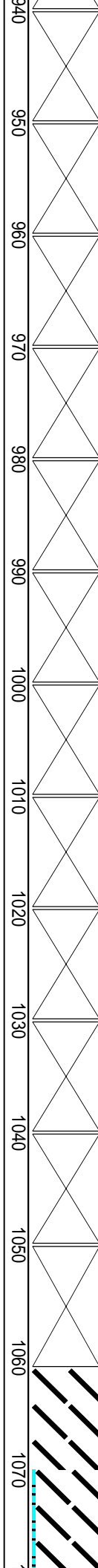
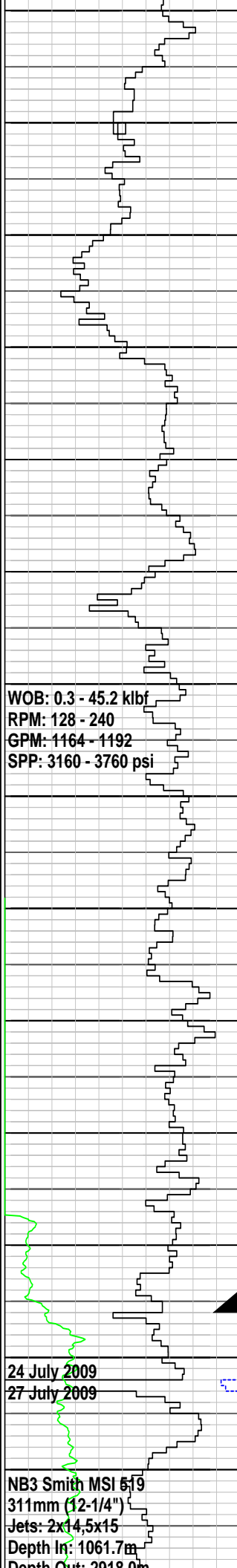
MD: 828.16m Inc: 34.09°
Azi: 149.77° TVD: 793.52m

MD: 856.81m Inc: 34.64°
Azi: 148.27° TVD: 817.16m

MD: 887.28m Inc: 36.54°
Azi: 149.29° TVD: 841.94m

Drill with seawater and hi-vis
sweeps
Returns to Seabed

MD: 916.73m Inc: 36.73°
Azi: 149.63° TVD: 865.58m



MD: 945.11m Inc: 36.90°
Azi: 150.11° TVD: 888.28m

MD: 974.40m Inc: 38.19°
Azi: 152.01° TVD: 911.49m

Drill with seawater and hi-vis
sweeps
Returns to Seabed

MD: 1003.53m Inc: 37.48°
Azi: 150.94° TVD: 934.50m

MD: 1032.80m Inc: 36.51°
Azi: 151.41° TVD: 957.88m

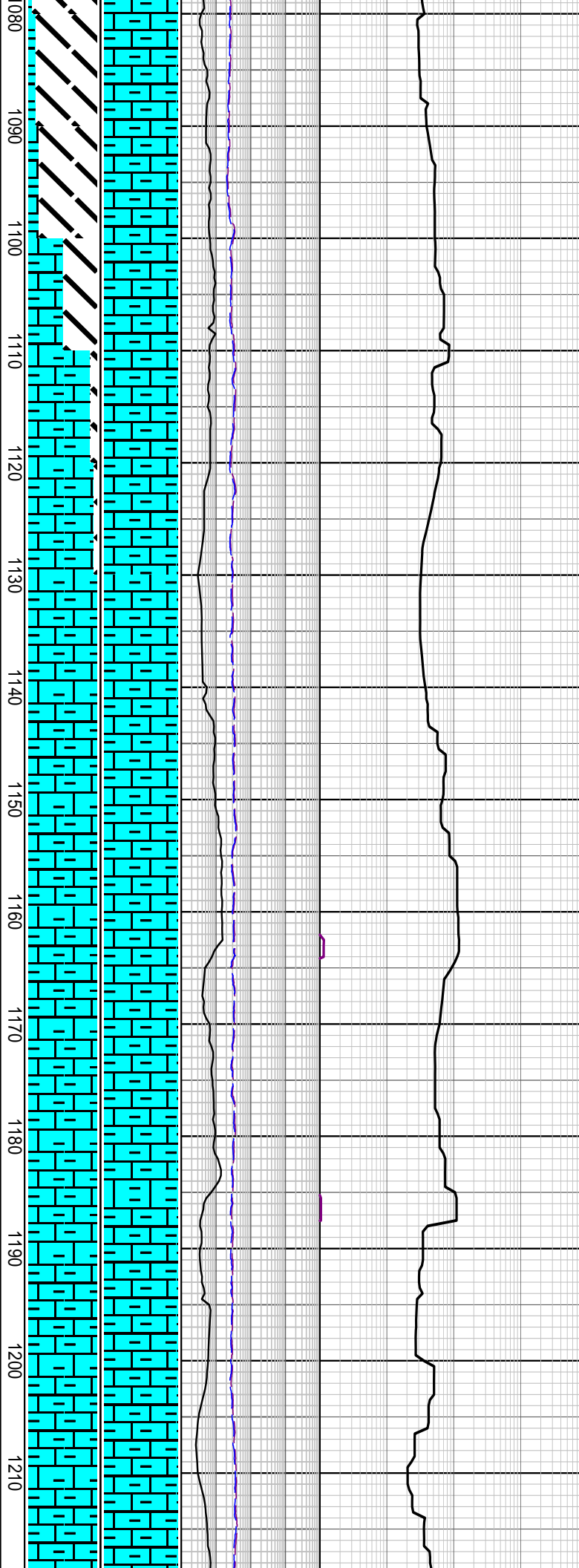
Set 340mm (13-3/8") casing
shoe at 1056.6mMDRT

MD: 1060.99m Inc: 36.98°
Azi: 151.69° TVD: 984.29m

Depth Out: 2918.0m
Drilled: 1856.3m in 26.9hrs
Grade: 1-2-CT-S-X-178-FC-PR

WOB: 5.9 - 44.1 klbf
RPM: 84 - 121
GPM: 805 - 1130
SPP: 1378 - 2441 psi

WOB: 3.1 - 47.0 klbf
RPM: 100 - 193
GPM: 845 - 1178
SPP: 1632 - 2811 psi



MARL: dom olv gry, com m lt
gry-m gry, sft frm, occ mod
hd, sbblky-blky, abd calc cly,
tr carb mat, tr v f sd

MW 1.08sg FV 48
PV/YP 11/19 Gels 6/7/8
Sol% 5.1 CI 49k

MD: 1118.79m Inc: 38.76°
Azi: 150.48° TVD: 1029.91m

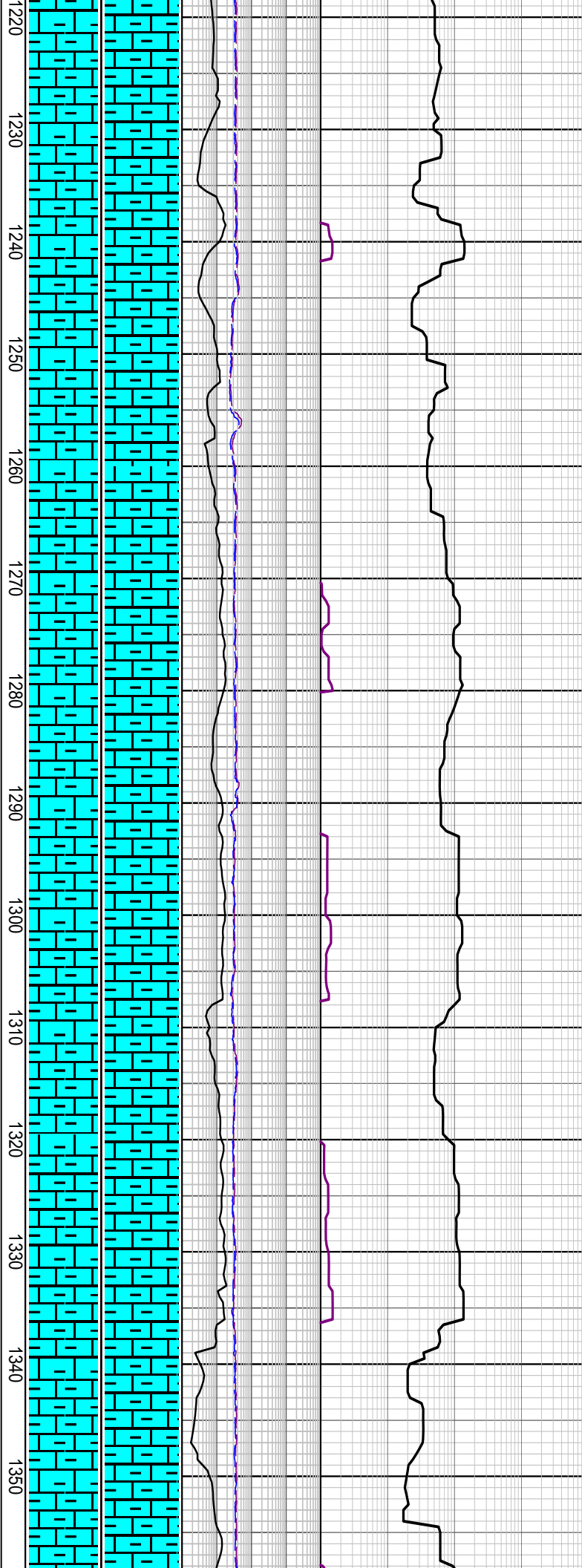
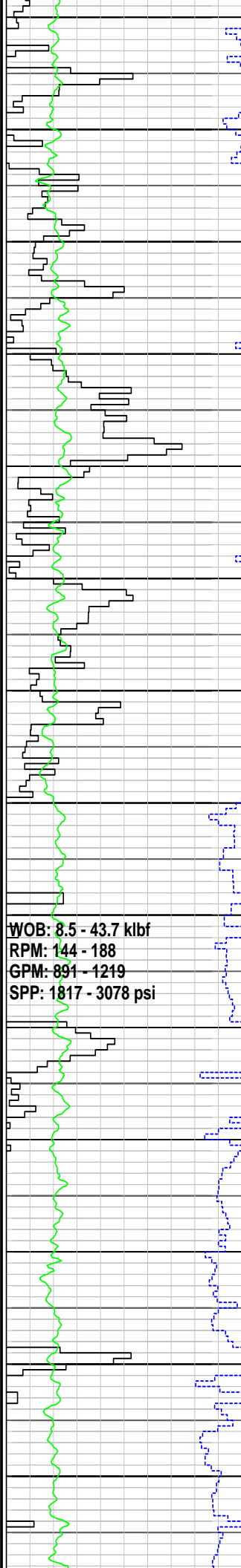
MARL: dom olv gry, com m lt
gry-m gry, frm-mod hd,
sbblky-blky, abd calc cly, tr
carb mat

MD: 1148.08m Inc: 38.35°
Azi: 150.07° TVD: 1052.82m

MD: 1176.13m Inc: 36.43°
Azi: 148.80° TVD: 1075.11m

MARL: dom olv gry, com m lt
gry-m gry, frm-mod hd,
sbblky-blky, abd calc cly, tr
carb mat

MD: 1205.74m Inc: 35.45°
Azi: 148.06° TVD: 1099.08m



MD: 1234.23m Inc: 35.74°
Azi: 147.30° TVD: 1122.25m

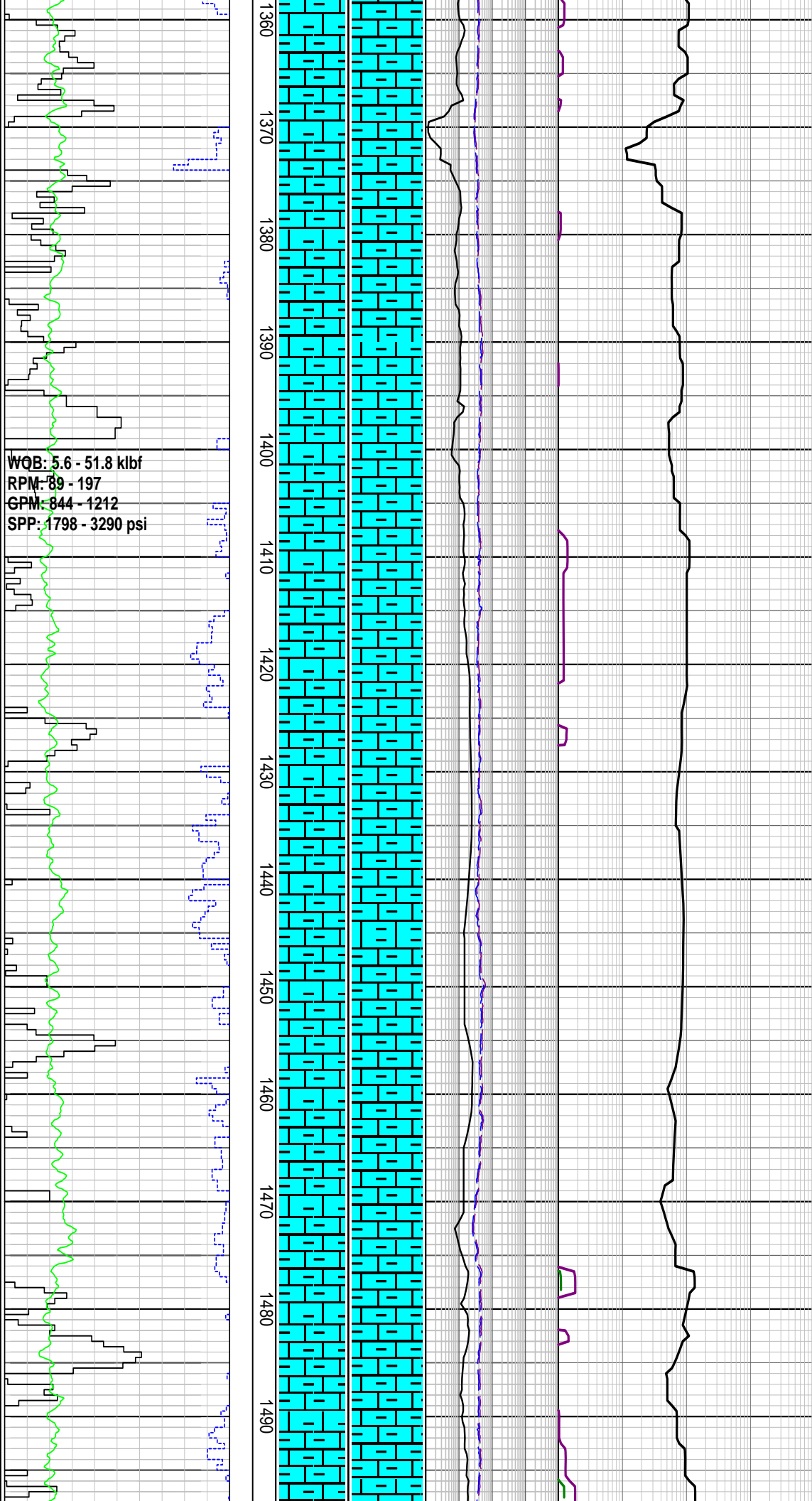
MARL: dom olv gry, occ v lt
gry-m gry, frm-mod hd,
sbbiky-blky, abd calc cly, tr
sil slt, tr blk lit frag, tr carb
spks

MD: 1292.39m Inc: 35.16°
Azi: 148.01° TVD: 1169.62m

MD: 1320.99m Inc: 34.65°
Azi: 148.19° TVD: 1189.25m

MARL: dom lt olv gry-olv gry,
occ m gry, frm-mod hd, sft
i/p, sbbiky-blky, abd calc cly,
tr sil slt, tr blk lit frag, tr carb
spks

MD: 1350.15m Inc: 35.16°
Azi: 147.62° TVD: 1213.17m



MD: 1379.29m Inc: 34.46°
Azi: 147.45° TVD: 1237.10m

MARL: dom lt olv gry-olv gry,
occ m gry, frm-mod hd, dom
mod hd, sbblky-blky, abd
calc cly, tr sil slt, tr-rr carb
mat

MD: 1407.09m Inc: 32.86°
Azi: 146.85° TVD: 1260.24m

MD: 1436.33m Inc: 32.04°
Azi: 146.56° TVD: 1284.91m

MARL: dom lt olv gry-olv gry,
occ m gry, frm-mod hd, dom
mod hd, sbblky-blky, abd
calc cly, tr sil slt, tr-rr carb
mat

MD: 1465.22m Inc: 31.37°
Azi: 147.89° TVD: 1309.49m

MD: 1493.86m Inc: 32.99°
Azi: 152.10° TVD: 1333.72m

WOB: 2.0 - 49.3 klf
RPM: 147 - 209
GPM: 842 - 1199
SPP: 1778 - 3360 psi

WOB: 2.1 - 50.6 klf
RPM: 126 - 213
GPM: 751 - 1203
SPP: 1827 - 3460 psi

1500 1510 1520 1530 1540 1550 1560 1570 1580 1590 1600 1610 1620 1630

MARL: dom m gry-olv gry,
occ m lt gry, frm-mod hd,
dom mod hd, sbbiky-blky,
abd calc cly, tr sil slit, tr-rr
carb mat

MD: 1522.57m Inc: 33.53°
Azi: 156.05° TVD: 1357.74m

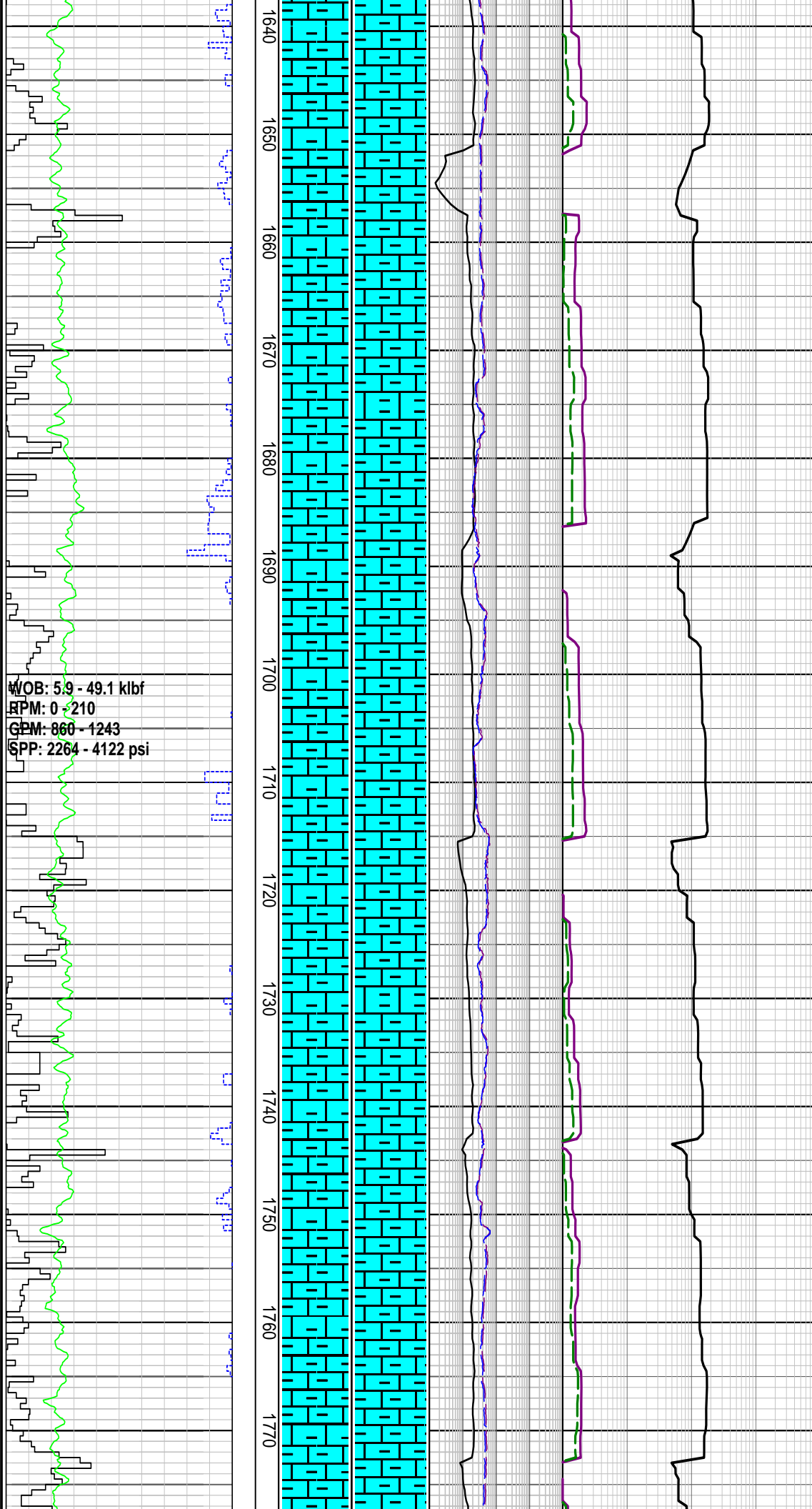
MD: 1551.08m Inc: 33.73°
Azi: 156.30° TVD: 1381.48m

MARL: dom m gry-olv gry,
occ m lt gry, frm-mod hd,
dom mod hd, sbbiky-blky,
abd calc cly, tr sil slit, tr-rr
carb mat

MD: 1579.74m Inc: 33.84°
Azi: 153.27° TVD: 1405.29m

MD: 1608.46m Inc: 35.27°
Azi: 150.47° TVD: 1428.95m

MARL: dom m gry-olv gry,
com m lt gry, frm-mod hd,
dom mod hd, sbbiky-blky,
abd calc cly, tr sil slit, tr-rr
carb mat



MD: 1637.45m Inc: 36.72°
Azi: 150.18° TVD: 1452.40m

MD: 1666.26m Inc: 36.12°
Azi: 150.25° TVD: 1475.59m

MARL: dom m gry-olv gry,
com m lt gry, frm-mod hd,
dom mod hd, sbbiky-blky,
abd calc cly, tr sil slit, tr-rr
carb mat

MD: 1694.89m Inc: 39.06°
Azi: 149.72° TVD: 1498.72m

MD: 1723.86m Inc: 36.07°
Azi: 149.77° TVD: 1522.14m

MARL: dom m lt gry-lt olv
gry, occ m gry, frm-mod hd,
dom mod hd, sbbiky-blky,
25-30% calc cly, tr sil slit, tr-rr
carb mat

MD: 1753.17m Inc: 36.60°
Azi: 149.91° TVD: 1545.75m

WOB: 10.0 - 40.4 klbf
RPM: 167 - 190
GPM: 824 - 1281
SPP: 2377 - 4110 psi

WOB: 10 - 40 klbf
RPM: 147 - 196
GPM: 810 - 1161
SPP: 2617 - 4254 psi

1780 1790 1800 1810 1820 1830 1840 1850 1860 1870 1880 1890 1900 1910

MD: 1781.25m Inc: 36.45°
Azi: 149.35° TVD: 1568.32m

MARL: dom m gry-olv gry, m
lt gry, sft frm, occ mod hd,
sbbly-blky, 30% calc cly, tr
calc slt, tr v f qtz grn, tr carb
spks, tr blk lith

MD: 1810.10m Inc: 36.88°
Azi: 150.13° TVD: 1591.46m

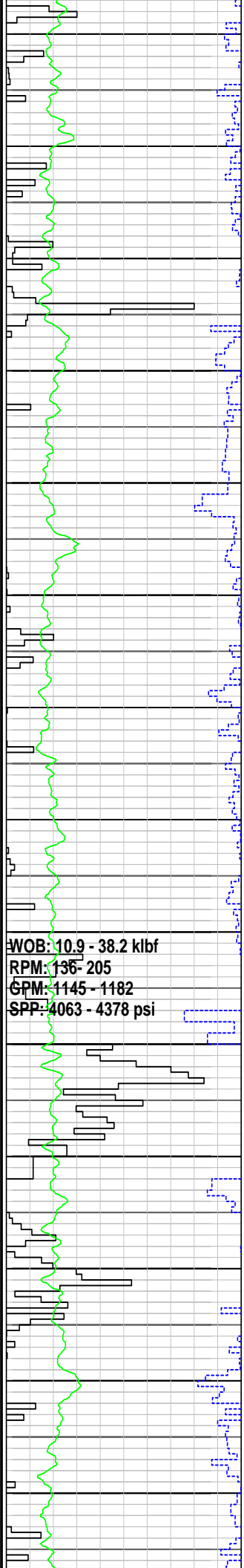
MD: 1839.26m Inc: 36.41°
Azi: 151.48° TVD: 1614.85m

MARL: dom m gry-olv gry, m
lt gry, sft frm, occ mod hd,
sbbly-blky, 30% calc cly, tr
calc slt, tr v f qtz grn, tr carb
spks, tr blk lith

MD: 1868.17m Inc: 36.44°
Azi: 151.16° TVD: 1638.12m

MD: 1896.82m Inc: 36.54°
Azi: 153.07° TVD: 1661.15m

MARL: dom m gry-olv gry, m
lt gry, sft frm, occ mod hd,
sbbly-blky, 25-30% calc cly,
tr calc slt, tr v f qtz grn, tr
carb spks, tr blk lith



WOB: 10.9 - 38.2 kbf
RPM: 136 - 205
GPM: 1145 - 1182
SPP: 4063 - 4378 psi

1920
1930
1940
1950
1960
1970
1980
1990
2000
2010
2020
2030
2040
2050

MD: 1926.08m Inc: 36.62°
Azi: 152.97° TVD: 1684.65m

MD: 1954.85m Inc: 36.48°
Azi: 152.04° TVD: 1707.76m

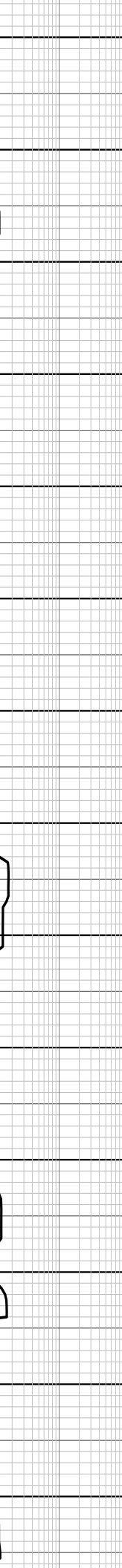
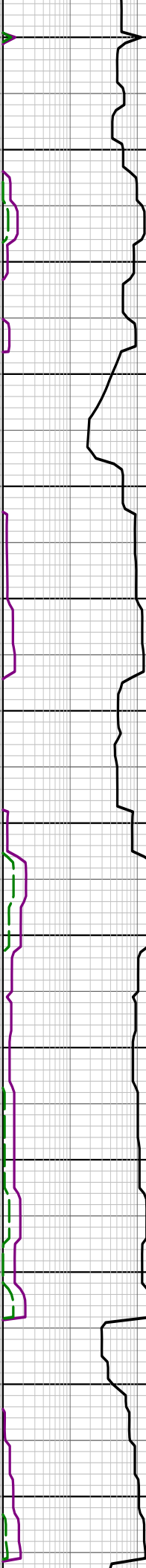
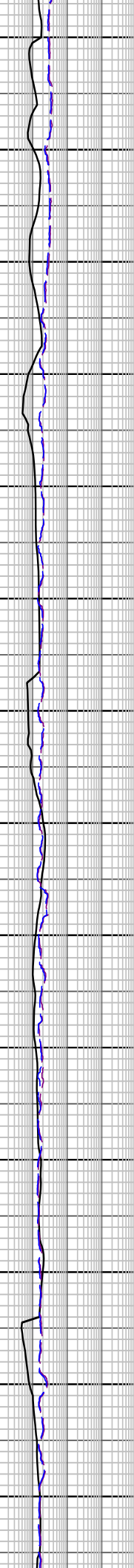
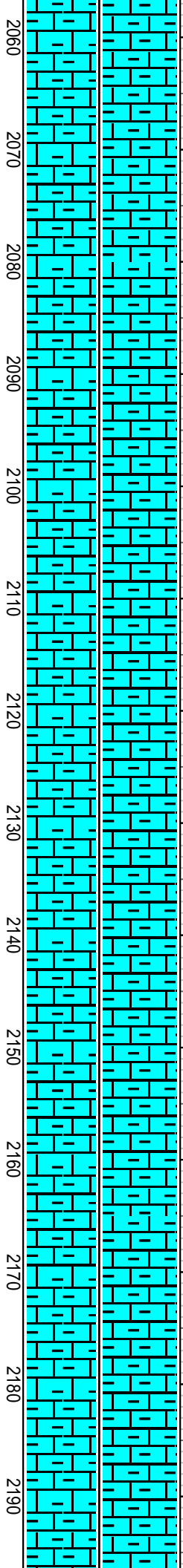
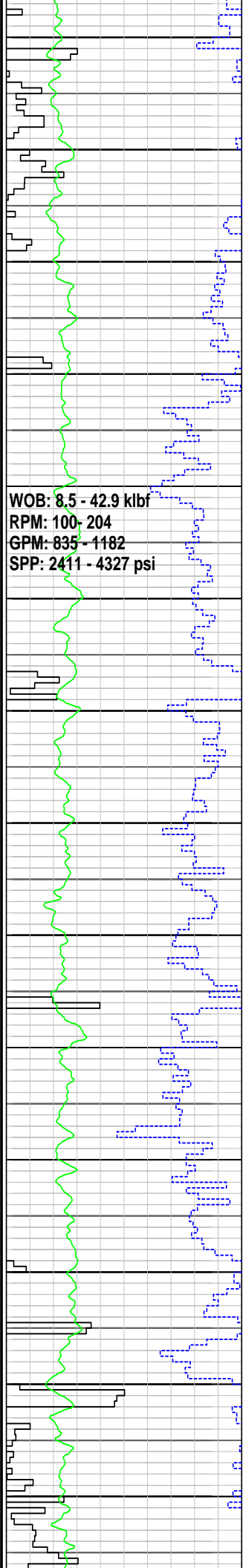
MARL: dom m gry-olv gry, m
lt gry, sft frm, occ mod hd,
sbbly-blky, 25-30% calc cly,
tr calc slt, tr v f qtz grn, tr pyr,
tr carb spks, tr blk lith

MD: 1983.67m Inc: 36.20°
Azi: 151.44° TVD: 1730.98m

MD: 2012.91m Inc: 36.92°
Azi: 150.95° TVD: 1754.47m

MARL: dom m gry, lt olv
gry-olv gry, occ m lt gry,
sft frm, occ mod hd,
sbbly-blky, 25-30% calc cly,
tr calc slt, tr pyr, tr carb spks,
tr blk lith

MD: 2041.28m Inc: 36.11°
Azi: 150.52° TVD: 1777.26m



MD: 2070.25m Inc: 36.28°
Azi: 150.15° TVD: 1800.65m

MARL: dom m gry, lt olv
gry-olv gry, occ m lt gry,
sft frm, occ mod hd,
sbbly-blky, 25-30% calc cly,
tr calc slt, tr pyr, tr carb spks,
tr blk lith

MD: 2099.29m Inc: 36.98°
Azi: 149.86° TVD: 1823.95m

MD: 2127.60m Inc: 37.51°
Azi: 149.66° TVD: 1846.48m

MD: 2156.62m Inc: 37.88°
Azi: 149.51° TVD: 1869.44m

MARL: dom pl yelsh brn, olv
gry, frm-mod hd, fri i/p, dom
mod hd, sbbly-blky, 30-35%
calc cly, tr calc slt, tr pyr, tr
carb spks, tr blk lith

MD: 2184.65m Inc: 38.11°
Azi: 149.41° TVD: 1891.53m

WOB: 18.7 - 43.8 klb
RPM: 158 - 201
GPM: 1005 - 1168
SPP: 3401 - 4316 psi

27 July 2009
28 July 2009

WOB: 15.9 - 32.4 klb
RPM: 175 - 240
GPM: 831 - 1343
SPP: 2539 - 4252 psi

2200
2210
2220
2230
2240
2250
2260
2270
2280
2290
2300
2310
2320
2330

MD: 2213.84m Inc: 38.43°
Azi: 149.62° TVD: 1914.45m

CALCAREOUS CLAYSTONE:
lt gry-m dk gry, mod hd, frm
i/p, sbblky-blky, 75% calc cly,
mnr sil slt, tr pyr, tr foram, tr
glauca

MD: 2242.40m Inc: 38.29°
Azi: 150.80° TVD: 1936.84m

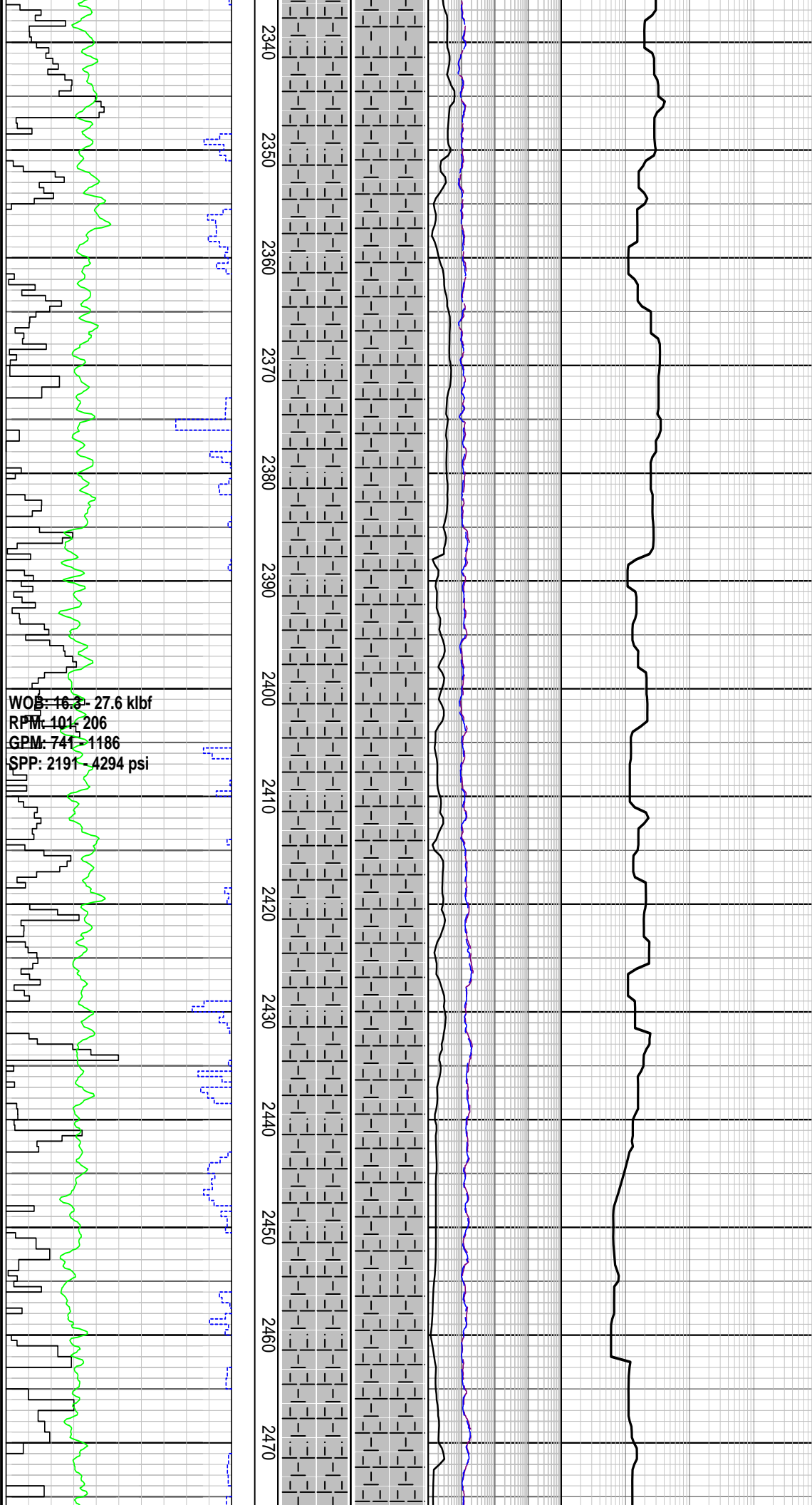
MW 1.15sg FV 52
PV/YP 16/26 Gels 9/11/13
Sol% 6.3 CI 38k

MD: 2270.15m Inc: 37.73°
Azi: 151.59° TVD: 1958.71m

CALCAREOUS CLAYSTONE:
m lt gry-m gry, sft-mod hd,
sbblky-blky, 60% calc cly,
mnr sil slt, tr pyr, tr foram, tr
glauca

MD: 2299.33m Inc: 37.92°
Azi: 152.77° TVD: 1981.76m

MD: 2328.31m Inc: 37.50°
Azi: 152.72° TVD: 2004.69m



CALCAREOUS CLAYSTONE:
m lt gry-m gry, sft-mod hd,
sbblky-blky, 60% calc cly,
mnr sil slt, tr pyr, tr foram, tr
glauc

MD: 2356.86m Inc: 37.14°
Azi: 152.63° TVD: 2027.39m

MD: 2385.32m Inc: 36.95°
Azi: 152.51° TVD: 2050.11m

CALCAREOUS CLAYSTONE:
m lt gry-m gry, sft-mod hd,
sbblky-blky, 60% calc cly, tr
sil slt, tr pyr, tr foram, tr
glauc

MD: 2414.74m Inc: 37.37°
Azi: 152.25° TVD: 2073.55m

MD: 2443.40m Inc: 37.46°
Azi: 152.07° TVD: 2096.32m

CALCAREOUS CLAYSTONE:
m lt gry-m gry, sft-mod hd,
sbblky-blky, 60% calc cly, tr
sil slt, tr pyr, tr foram, tr
glauc

MD: 2472.38m Inc: 37.14°
Azi: 152.42° TVD: 2119.37m

WOB: 22.1 - 34.5 kbf
RPM: 157 - 204
GPM: 824 - 1135
SRP: 2278 - 4323 psi

WOB: 26.8 - 35.8 kbf
RPM: 144 - 205
GPM: 847 - 1153
SRP: 2864 - 4333 psi

2480 2490 2500 2510 2520 2530 2540 2550 2560 2570 2580 2590 2600 2610

CALCAREOUS CLAYSTONE:
dom m dk gry, sft-mod hd,
sbbiky-blky, 60% calc cly,
tr-abd glauc, mnř slt, tr foram

MD: 2501.29m Inc: 37.25°
Azi: 152.68° TVD: 2142.40m

SANDSTONE: trnsł, wh-v lt
gy, fri, m-crs, p srt,
ang-sbang-sbrnđđ, tr calc
mtrx, 10% glauc, tr pyr, n/s

SILTSTONE: m yel brn, lt
olv-lt olv blk, sft-frm,
blky-sbbiky, 10% sil cly, tr
pyr, tr c, rr-mnr glauc

MD: 2530.46m Inc: 36.72°
Azi: 153.05° TVD: 2165.70m

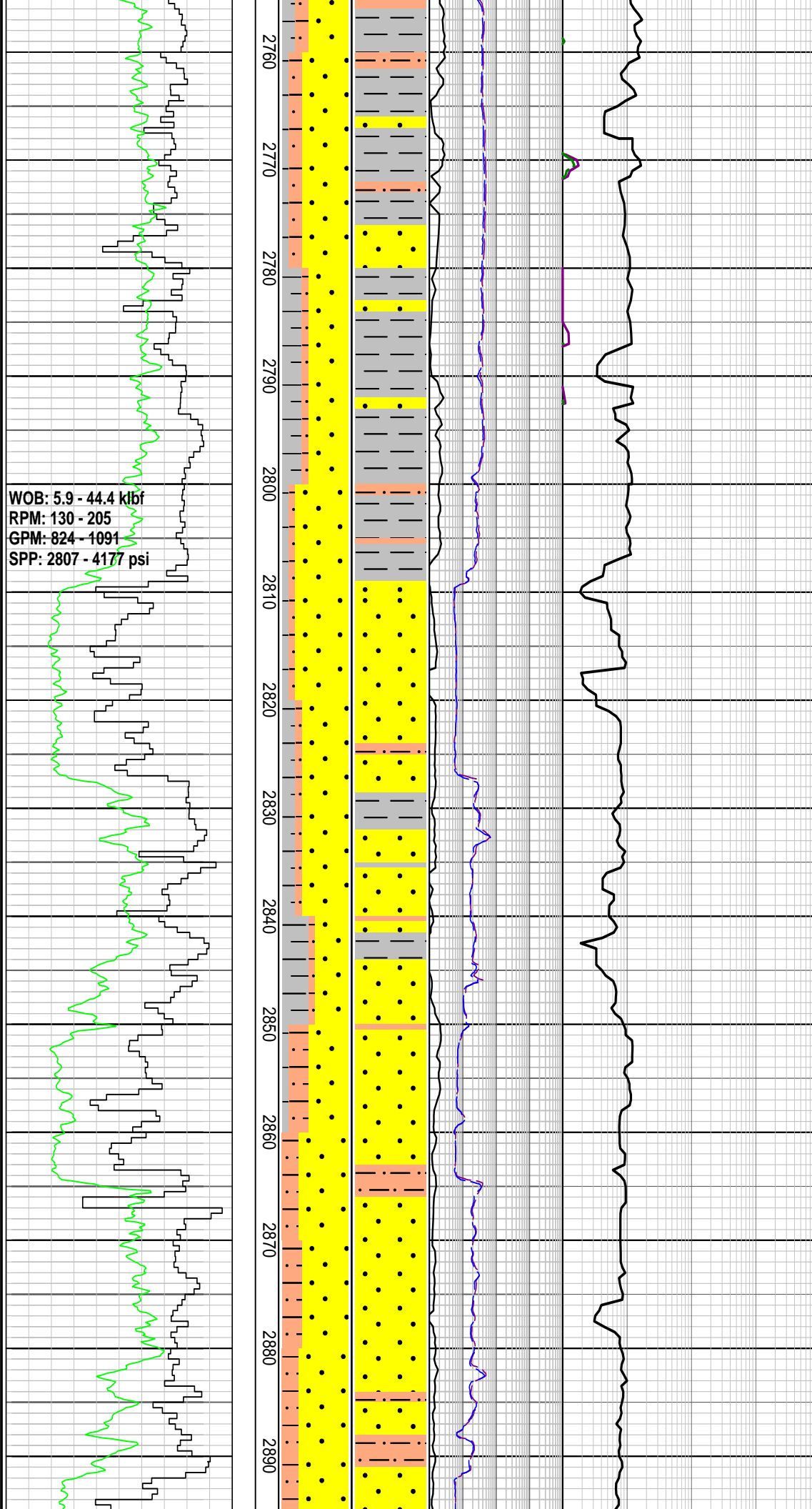
CALCAREOUS CLAYSTONE:
dom m dk gry, sft-mod hd,
sbbiky-blky, 60% calc cly,
tr-abđ glauc, mnř slt, tr foram

MD: 2559.09m Inc: 37.34°
Azi: 152.33° TVD: 2188.55m

SANDSTONE: clr-trnsł, yelsh
gry, lse, m-crs, dom crs,
p-mod srt, ang-sbang,
elong-sph, tr glauc, tr pyr, gd
inf por, n/s

MD: 2587.53m Inc: 37.75°
Azi: 151.79° TVD: 2211.11m

CLAYSTONE: lt gry-m dk gry,
m blsh gry, occ grnsh gry,
sft-mod hd, sbbiky-blky, mnř
calc cly, rr calc slt, mnř sil
slt, tr pyr, tr glauc, tr carb
mat



nd, sbbly-blky, mnr calc cly,
rr calc slt, mnr sil slt, tr pyr, tr
glauc, tr carb mat

MD: 2760.70m Inc: 37.02°
Azi: 141.64° TVD: 2348.99m

SANDSTONE: clr-trnsl, yelsh
gry, lse, f-crs, p-mod srt,
ang-sbrndd, tr glauc, tr pyr,
gd inf por

SILTSTONE: m brn gry, lt olv
gry-olv blk, sft-frm,
sbbly-blky, mnr sil cly, tr
pyr, tr c, rr glauc

MD: 2789.97m Inc: 36.48°
Azi: 140.97° TVD: 2372.45m

CLAYSTONE: m dk gry, m
brn gry, occ gnsh gry, v
sft-mod hd, amor-sbbly, mnr
calc cly, rr calc slt, mnr sil
slt, tr pyr, occ tr glauc, tr carb
mat

MD: 2819.09m Inc: 36.62°
Azi: 142.39° TVD: 2395.84m

SANDSTONE: clr-trnsl, m dk
gry-olv gry, lse, v f-v crs,
p-mod srt, sbang-rndd, tr
glauc, tr pyr, tr glauc, gd inf
por

MD: 2848.22m Inc: 36.88°
Azi: 144.25° TVD: 2419.18m

SILTSTONE: m dk gry, brnsh
gry, sft-mod hd, amor-blky,
wl srt, sbang, mnr sil cly, tr
pyr, tr c, rr glauc

MD: 2876.96m Inc: 37.06°
Azi: 144.65° TVD: 2442.14m

SANDSTONE: clr-trnsl, trnsp,
wh, lt gry, lse, v f-v crs,

WOB: 9.5 - 44.1 klbf
RPM: 129 - 204
GPM: 862 - 1064
SPP: 3015 - 4349 psi

28 July 2009
01 August 2009

NB4 Smith MSI 616WEBPX
216mm (8-1/2")
Jets: 3x14, 3x13
Depth In: 2918.0m
Depth Out: 3448.8m
Drilled: 530.8m in 18.7hrs
Grade: 1-0-CT-S-X-7-RQ-T

WOB: 0.2 - 23.0 klbf
RPM: 76 - 202
GPM: 637 - 832
SPP: 2800 - 3682 psi

2900
2910
2920
2930
2940
2950
2960
2970
2980
2990
3000
3010
3020
3030

p-mod srt, sbang-sbrndd, sli
sph-elong, tr glauc, tr pyr

MW 1.15sg FV 51
PV/YP 18/26 Gels 10/12/15
Sol% 9.6 Cl 48k

Set 244mm (9-5/8") casing
shoe at 2910.9mMDRT

MD: 2916.00m Inc: 36.76°
Azi: 147.69° TVD: 2473.60m

SANDSTONE: clr-trnsl, trnsp,
wh, lt gry, lse, v f-v crs,
p-mod srt, sbang-sbrndd, sli
spher-elong, tr glauc, tr pyr,
tr glauc

MD: 2945.42m Inc: 37.01°
Azi: 148.10° TVD: 2497.10m

SILTSTONE: m dk gry, brnsh
gry, sft-mod hd, amor-blky,
wl srt, sbang, mntr sil cly, tr
pyr, tr c, rr glauc

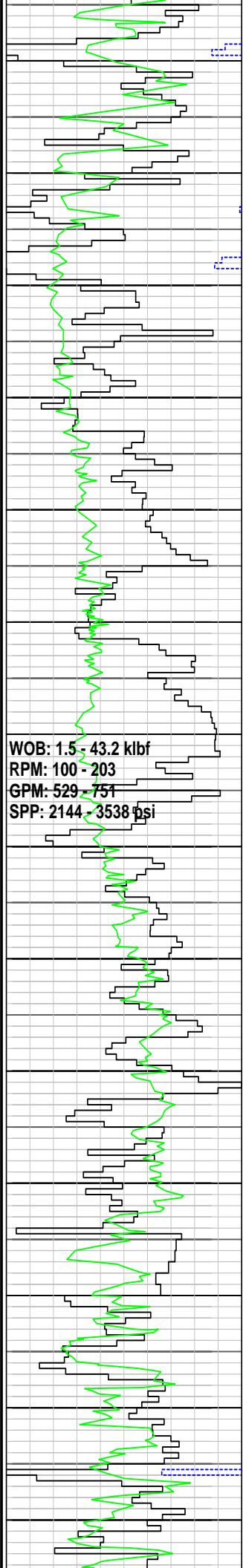
MD: 2974.04m Inc: 35.23°
Azi: 148.79° TVD: 2520.20m

SANDSTONE: trnsl, trnsp,
lt-m lt gry, lse, sft, v f-v crs,
mod srt, sbang-rndd, sli
sph-elong, tr pyr cmt, mntr
wh-lt gry sil cly, tr pyr, pr vis
por, n/s

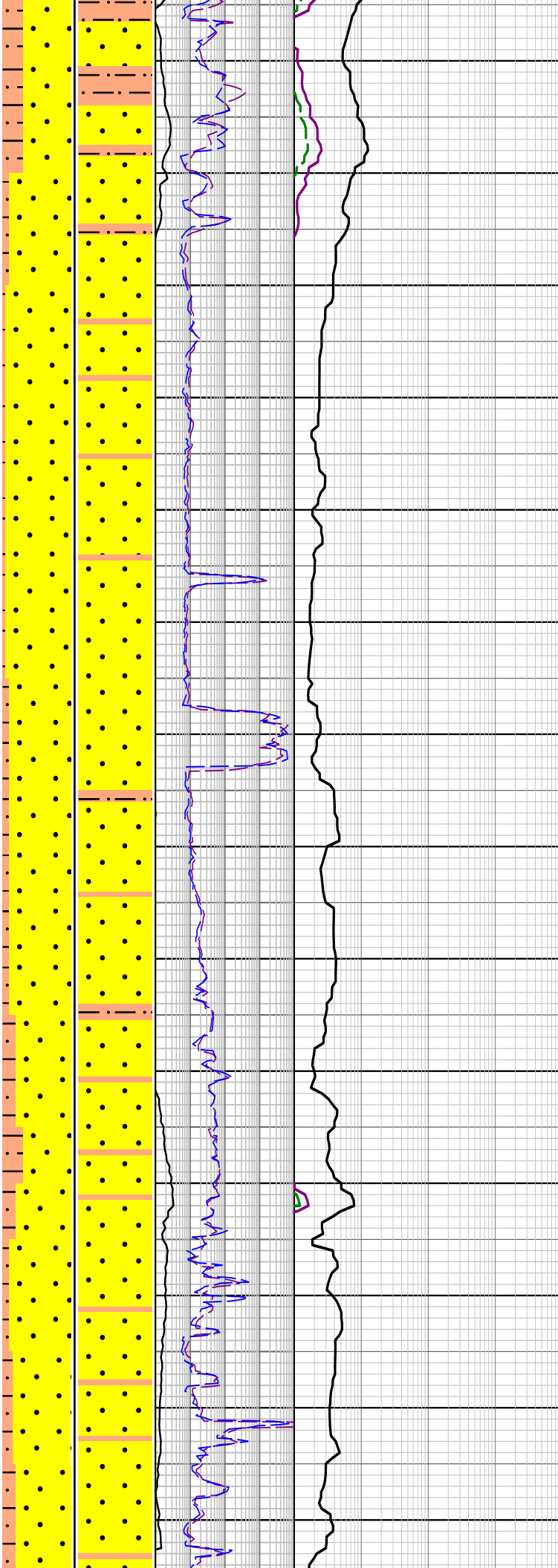
MD: 3002.43m Inc: 31.62°
Azi: 147.66° TVD: 2543.90m

SILTSTONE: dk gry, dk brnsh
gry-brnsh blk, frm-mod hd,
sbbly-blky, mntr sil cly, tr
pyr, tr carb frag

MD: 3031.89m Inc: 29.63°
Azi: 151.64° TVD: 2569.3m



3040 3050 3060 3070 3080 3090 3100 3110 3120 3130 3140 3150 3160 3170



SANDSTONE: clr-trnsp, lse, f-v crs, mod srt, sbang-rndd, tr pyr, tr carb spks, f-gd inf por, n/s

MD: 3060.42m Inc: 33.83°
Azi: 159.35° TVD: 2593.57m

SILTSTONE: dk gry, dk brnsh gry-brn blk, frm-mod hd, sbblky-blky, occ sb fis, mn sil cly, tr pyr, tr carb frag

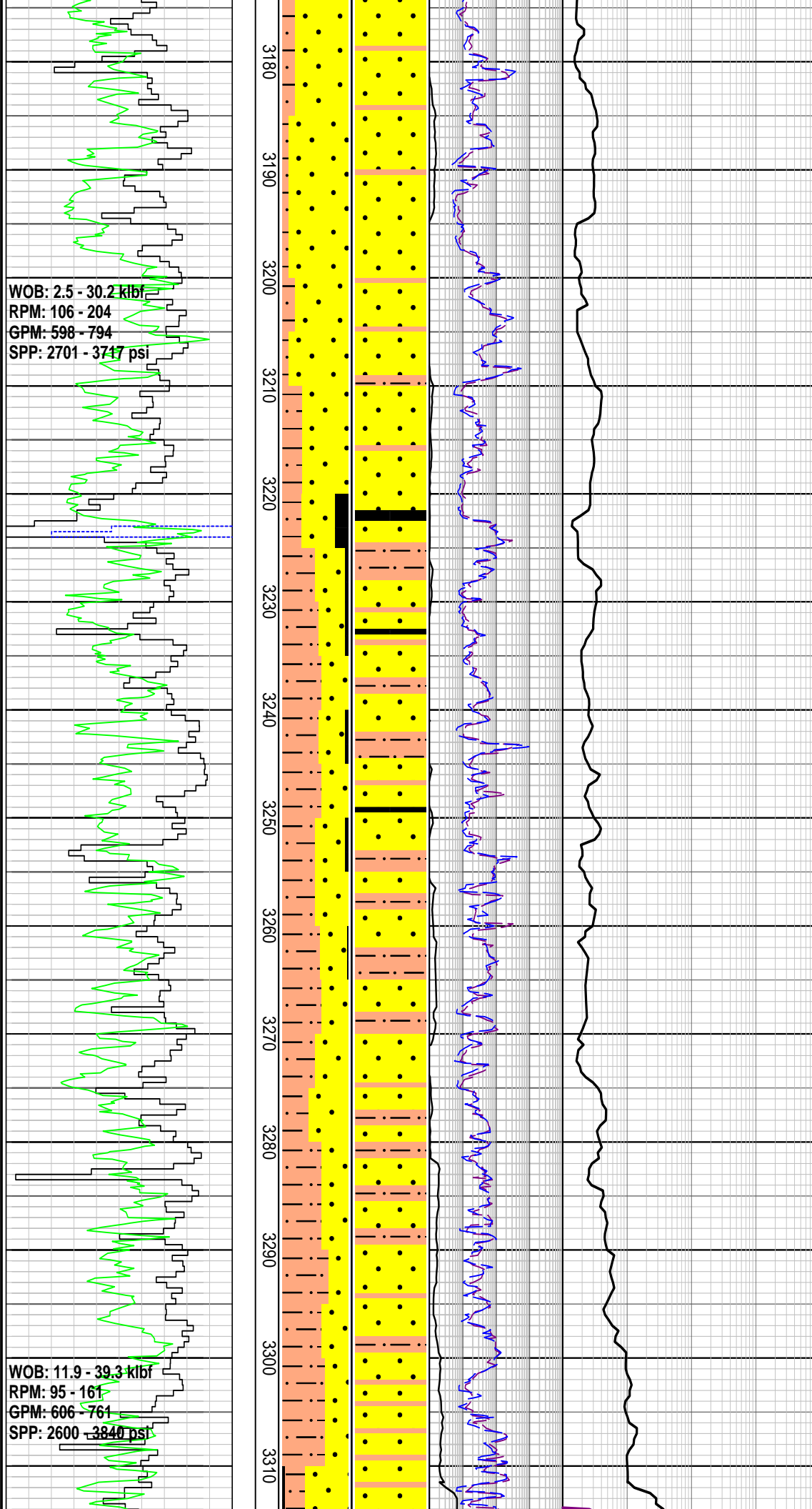
MD: 3090.15m Inc: 37.81°
Azi: 160.82° TVD: 2617.68m

SANDSTONE: trnsp, trnsl, v f-f, occ crs-v crs, mod srt, sbang-rndd, tr carb spks, tr pyr, f-gd inf por, n/s

MD: 3118.97m Inc: 36.08°
Azi: 156.55° TVD: 2663.01m

SILTSTONE: m dk gry-dk brnsh gry, frm-mod hd, sbblky-blky, mn sil cly, tr pyr, tr-rr carb frag

SANDSTONE: trnsp, trnsl, lt-m lt gry, lse, v f, tr v crs, mod srt, sbang-rndd, mn wh-lt gry sil cly, tr pyr, f inf por, n/s



WOB: 2.5 - 30.2 klbf
RPM: 106 - 204
GPM: 598 - 794
SPP: 2701 - 3747 psi

WOB: 11.9 - 39.3 klbf
RPM: 95 - 161
GPM: 606 - 761
SPP: 2600 - 3840 psi

MD: 3175.76m Inc: 36.39°
Azi: 157.79° TVD: 2686.23m

ARGILLACEOUS
SILTSTONE: m dk gry, dk
brnsh gry-brn blk, frm-mod
hd, sbblky-blky, tr pyr, tr-rr
carb frag

MD: 3204.32m Inc: 36.69°
Azi: 156.93° TVD: 2709.17m

SANDSTONE: trnsp, trnsl,
lt-med lt gry, lse, v f, tr v crs,
mod srt, sbang-rnnd, mn
wh-lt gry sil cly, tr pyr, f inf
por, n/s

MD: 3233.41m Inc: 36.98°
Azi: 151.11° TVD: 2732.46m

COAL: gry blk-blk, frm-mod
hd, occ brit, blk, occ sbfiss,
dl-sbvit lstr, occ sbconch
frac

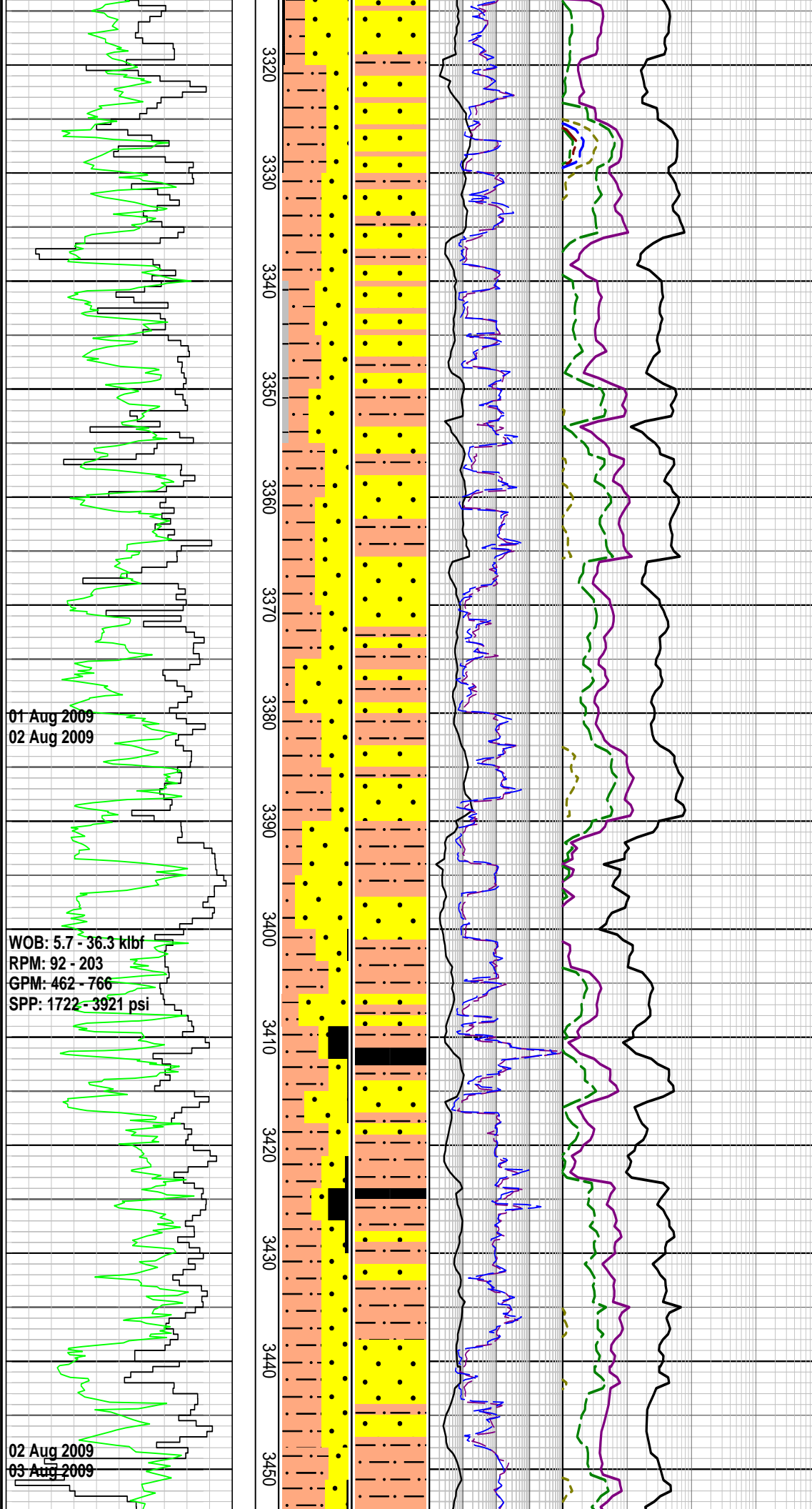
Run Carbide @ 3251 mMDRT,
Hole size = 8.9"

MD: 3262.37m Inc: 36.02°
Azi: 152.71° TVD: 2735.74m

ARGILLACEOUS
SILTSTONE: m gry-dk gry, dk
brnsh gry-brn blk, frm-mod
hd, sbblky-blky, mn sil cly, tr
pyr, tr-rr carb frag, grdg to
Cist

MD: 3291.18m Inc: 36.12°
Azi: 160.61° TVD: 2779.05m

SANDSTONE: trnsl, occ lt-m
lt gry, lse, v f-v crs, p srt,
sbang-rnnd, tr pyr, tr rk flr, f
inf por, n/s



MD: 3320.35m Inc: 36.24°
Azi: 159.29° TVD: 2802.59m

MD: 3333.62m Inc: 36.47°
Azi: 158.93° TVD: 2813.27m

CLAYSTONE: brnsh
gry-brnsh blk, sft-mod hd,
sbbiky-blky, occ amor, mnr
sil slt, tr pyr, tr carb frag

MD: 3349.35m Inc: 36.25°
Azi: 157.70° TVD: 2825.94m

ARGILLACEOUS
SILTSTONE: dom lt gry-m
gry, occ dk gry, sft frm,
crmbly, amor-sbbiky, disp,
com v f qtz, tr pyr, tr-rr carb
frag

MD: 3379.19m Inc: 36.82°
Azi: 155.23° TVD: 2849.92m

MW 1.13sg FV 49
PV/YP 14/27 Gels 8/10/11
Sol% 8.0 CI 47.5k

MD: 3407.07m Inc: 36.55°
Azi: 156.71° TVD: 2872.27m

COAL: grysh blk-blk, brit-hd,
blky, sbfis i/p, dl-vit lstr, occ
sbconch frac

SANDSTONE: trnsi-op, occ v
lt gry-m lt gry, lse, v f-v crs,
dom crs, p srt, sbang-sbrndd,
sli sph-elong, tr pyr, tr rk flr,
p-fr inf por, n/s

Samples from 3436m to
3448m were not circulated up
due to a leak in the derrick
gooseneck on the standpipe

MD: 3433.68m Inc: 36.87°
Azi: 153.94° TVD: 2893.61m

ARGILLACEOUS
SILTSTONE: dom lt gry-m
arv, occ olv blk-dk arv.

NB5 Smith-MSI-616WEBPX
216mm (8-1/2")
Jets: 3x13,3x12
Depth In: 3448.8m
Depth Out: 3537.0m
Drilled: 89.2m in 2.1hrs
Grade: 1-0-CT-C-X-I-NO-DMF

WOB: 0.9 - 45.3 klf
RPM: 53 - 201
GPM: 568 - 866
SPP: 3032 - 4260 psi

03 Aug 2009
04 Aug 2009

5RR Smith-MSI-616WEBPX
216mm (8-1/2")
Jets: 3x13,3x12
Depth In: 3537.0m
Depth Out: 3921.0m
Drilled: 383.0m in 16.3hrs
Grade: 1-1-CT-S-X-I-WT-TD

3460
3470
3480
3490
3500
3510
3520
3530
3540
3550
3560
3570
3580
3590

sft-frm, crmbly, sbblky-blky,
com v f qtz, tr pyr, rr carb
frag

MD: 3462.78m Inc: 36.52°
Azi: 152.02° TVD: 2916.94m

SANDSTONE: trnsf-op, m lt
gry-brn gry, dom fri-frm, lse
i/p, v f-crs, dom v f-f,
sbang-rndd, p srt, sli
sph-elong, com sil cly, tr pyr,
p vis por, n/s

MD: 3475.07m Inc: 36.21°
Azi: 152.21° TVD: 2926.84m

ARGILLACEOUS
SILTSTONE: dom m
gry-brnsh gry, occ lt gry-v dk
gry, sft-frm, occ crmbly,
amor-sbblky, com v f qtz, tr
pyr, tr-rr carb frag

MD: 3492.05m Inc: 35.78°
Azi: 152.89° TVD: 2940.58m

MD: 3500.29m Inc: 35.47°
Azi: 152.89° TVD: 2947.47m

COAL: blk, frm-mod hd, brit
i/p, blk-occ sbfis, dl-vit lstr,
occ sbconch frac

MD: 3519.73m Inc: 34.81°
Azi: 153.80° TVD: 2963.44m

Samples from 3531m to
3537m were not circulated up
due to mud motor failure

SANDSTONE: trnsf-op, m lt
gry-brn gry, dom fri-frm, lse
i/p, v f-crs, dom v f-f,
sbang-rndd, p srt, sli
sph-elong, com sil cly, tr pyr,
p vis por

MD: 3548.84m Inc: 33.92°
Azi: 153.76° TVD: 2987.47m

FLUORESCENCE(3538-3559m)
(tr): v dl gn yel sptd-pch fluor
w/ v wk diffuse-v slw stmg ct
fluor & thn dl gn yel ring res
fluor

ARGILLACEOUS
SILTSTONE: dom m
gry-brnsh gry, occ lt gry-v dk
gry, sft-frm, occ crmbly,
amor-sbblky, com v f qtz, tr
pyr, tr-rr carb frag

MD: 3577.49m Inc: 33.10°
Azi: 154.0° TVD: 3011.36m

FLUORESCENCE(3573-3582m)
(tr): v dl gn yel sptd-pch fluor
w/ v wk diffuse-v slw stmg ct
fluor & thn dl gn yel ring res
fluor

WOB: 4.5 - 31.2 kbf
RPM: 9 - 126
GPM: 483 - 615
SPP: 2395 - 4111 psi

WOB: 6.0 - 44.75 kbf
RPM: 21 - 111
GPM: 428 - 604
SPP: 719 - 2816 psi

3600
3610
3620
3630
3640
3650
3660
3670
3680
3690
3700
3710
3720
3730

SANDSTONE: trnsl-op, lse,
f-v crs, dom m-crs,
sbang-rndd, p-mod srt, sli
sph-elong, tr pyr, gd inf por

MD: 3608.69m Inc: 32.91°
Azi: 154.09° TVD: 3037.52m

COAL: blk, frm-mod hd, brit,
blk-occ sbfis, dl-vit lstr, occ
sbconch frac

FLUORESCENCE(3627-3633m)
(tr-35%): dl yel dir fluor, nil-v
slw diffuse-v mky ct fluor, dl
yel res fluor

MD: 3635.12m Inc: 32.09°
Azi: 154.39° TVD: 3059.81m

SANDSTONE: v lt gry, trnsl,
dom lse, m gn, mnr crs,
ang-rndd, wl srt, mod sph, tr
pyr, f-mod inf por

FLUORESCENCE(3645-3678m)
(10-50%): dl yel-yel wh dir
fluor, nil-v wk stmg mky ct
fluor, v wk dl yel res fluor

MD: 3663.53m Inc: 31.58°
Azi: 154.62° TVD: 3083.95m

SANDSTONE: v lt gry, trnsl,
dom lse, m gn, mnr crs,
ang-rndd, wl srt, mod sph, tr
pyr, f-mod inf por

MD: 3692.52m Inc: 30.55°
Azi: 154.89° TVD: 3108.78m

FLUORESCENCE(3684-3711m)
(tr): v dl gnsh yel dir fluor, v
wk stmg mky-wh ct fluor, v
wk yel res fluor

ARGILLACEOUS
SILTSTONE: dom m
gry-brnsh gry, occ lt gry-v dk
gry, sft-frm, occ crmbly,
amor-sbbkly, com v f qtz,
mnr sil cly, tr pyr, tr-rr carb
frag

MD: 3721.03m Inc: 29.79°
Azi: 154.69° TVD: 3133.43m

SANDSTONE: v lt gry, trnsl,
dom lse, m gn, mnr crs,
ang-rndd, wl srt, mod sph, tr

