



DRILLING LOG



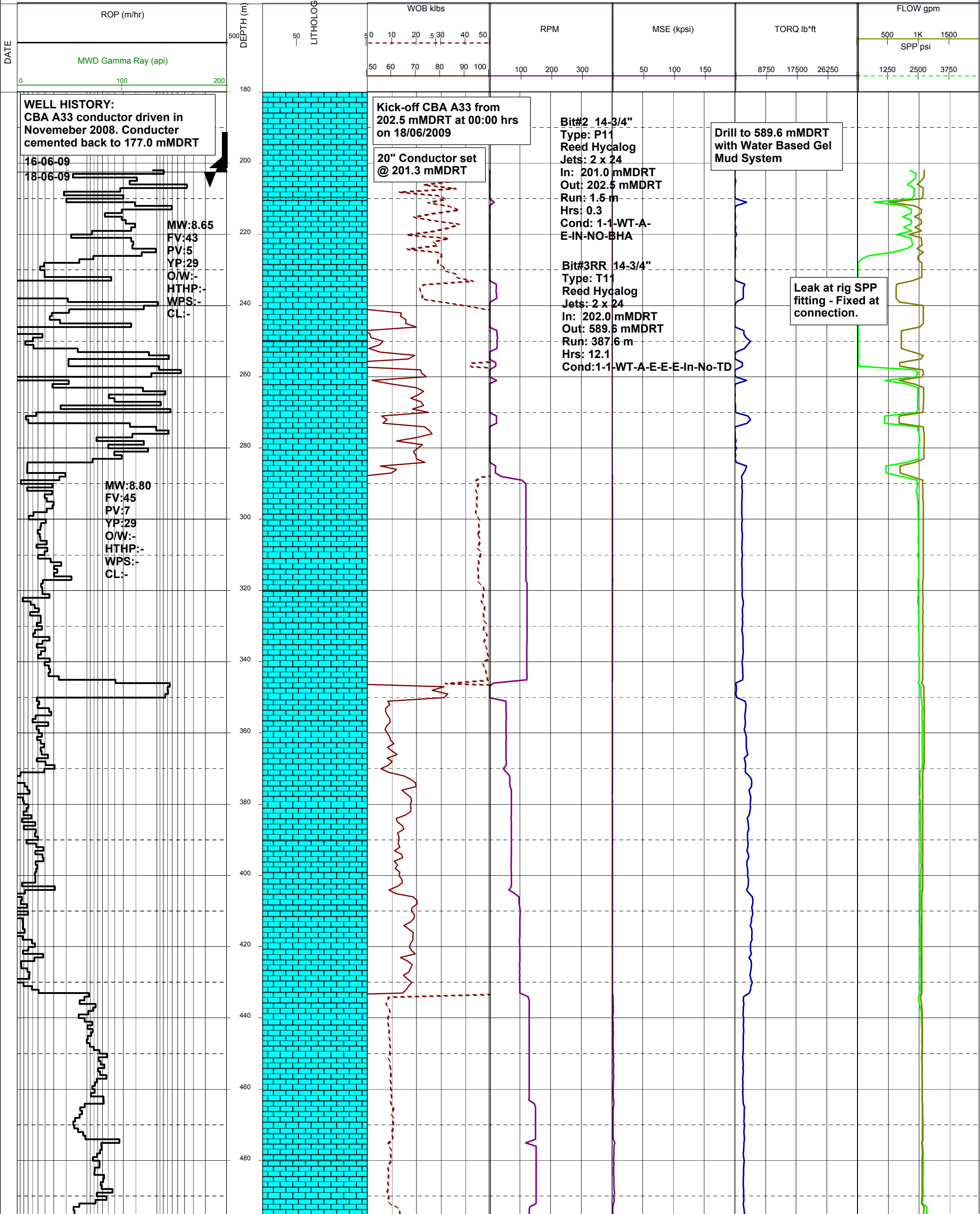
Well Name : CBA A33  
Company : ESSO AUSTRALIA LTD

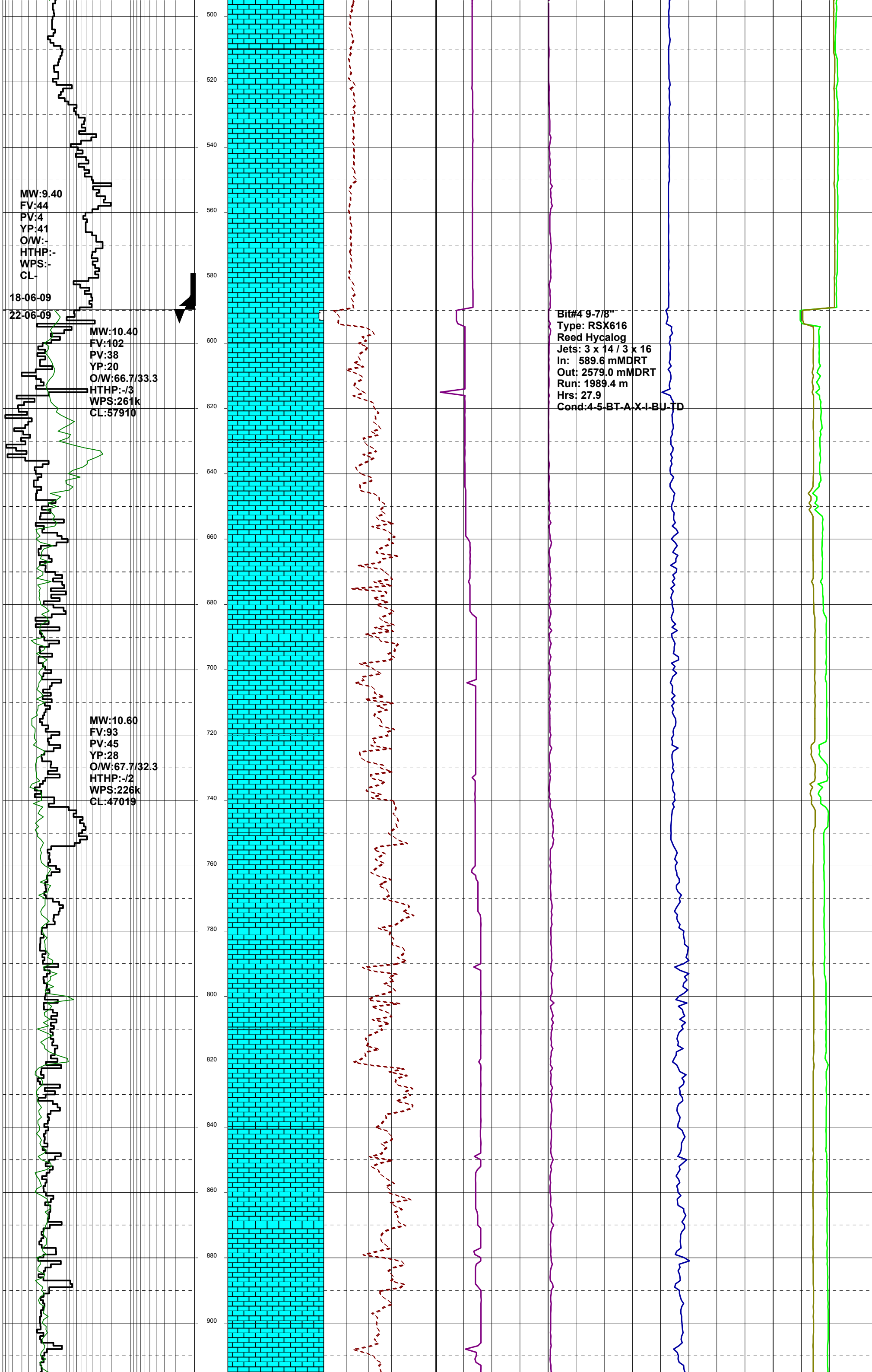
Country : AUSTRALIA

RT-MSL (m) : 41.0  
RT-SEABED (m): 120.0

Final TD: 2579.00 mMDRT  
Final TVD: 2505.15 mTVDRT

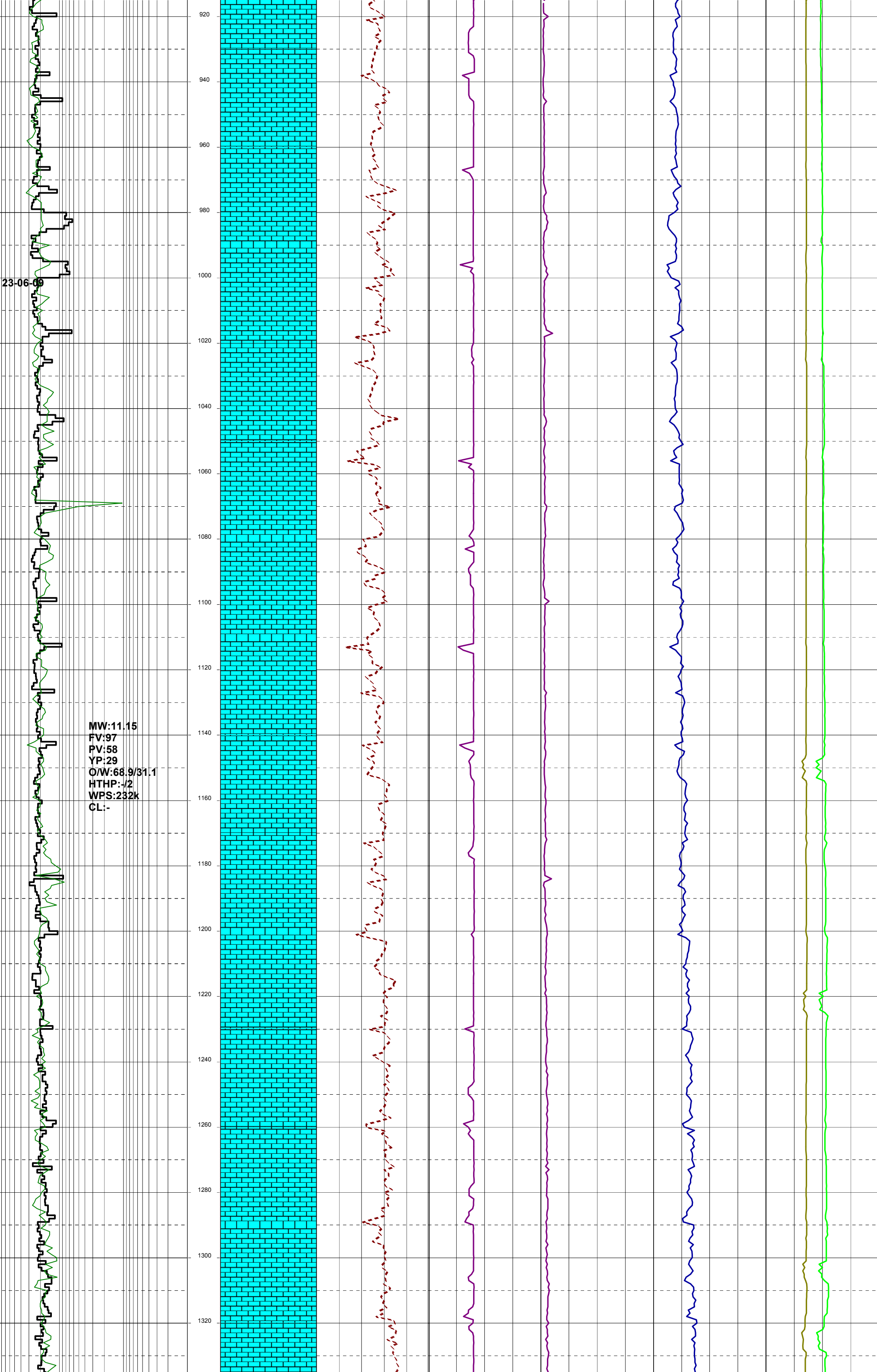
Generated by geoNEXT Package



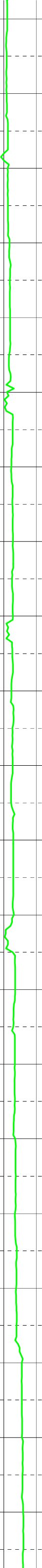
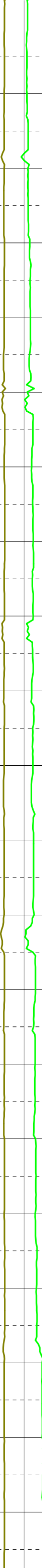
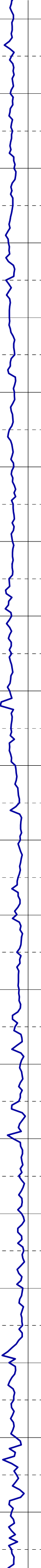
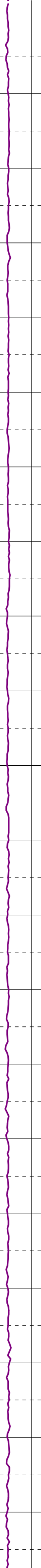
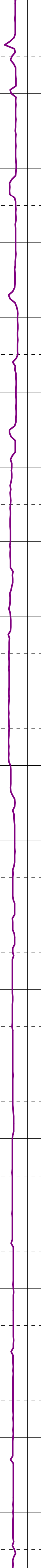
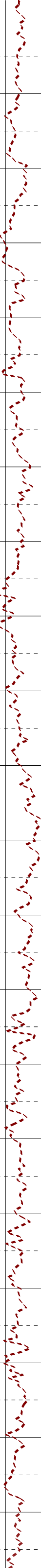
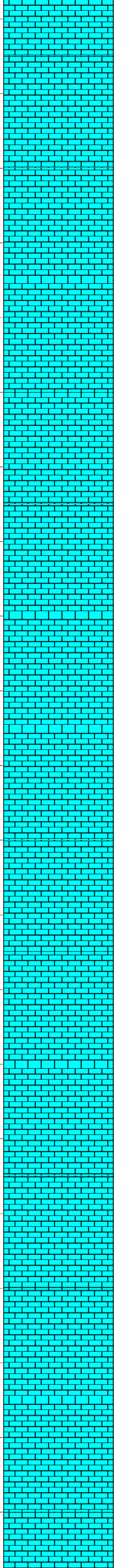


23-06-88

MW:11.15  
FV:97  
PV:58  
YP:29  
O/W:68.9/31.1  
HTHP:-/2  
WPS:232k  
CL:-



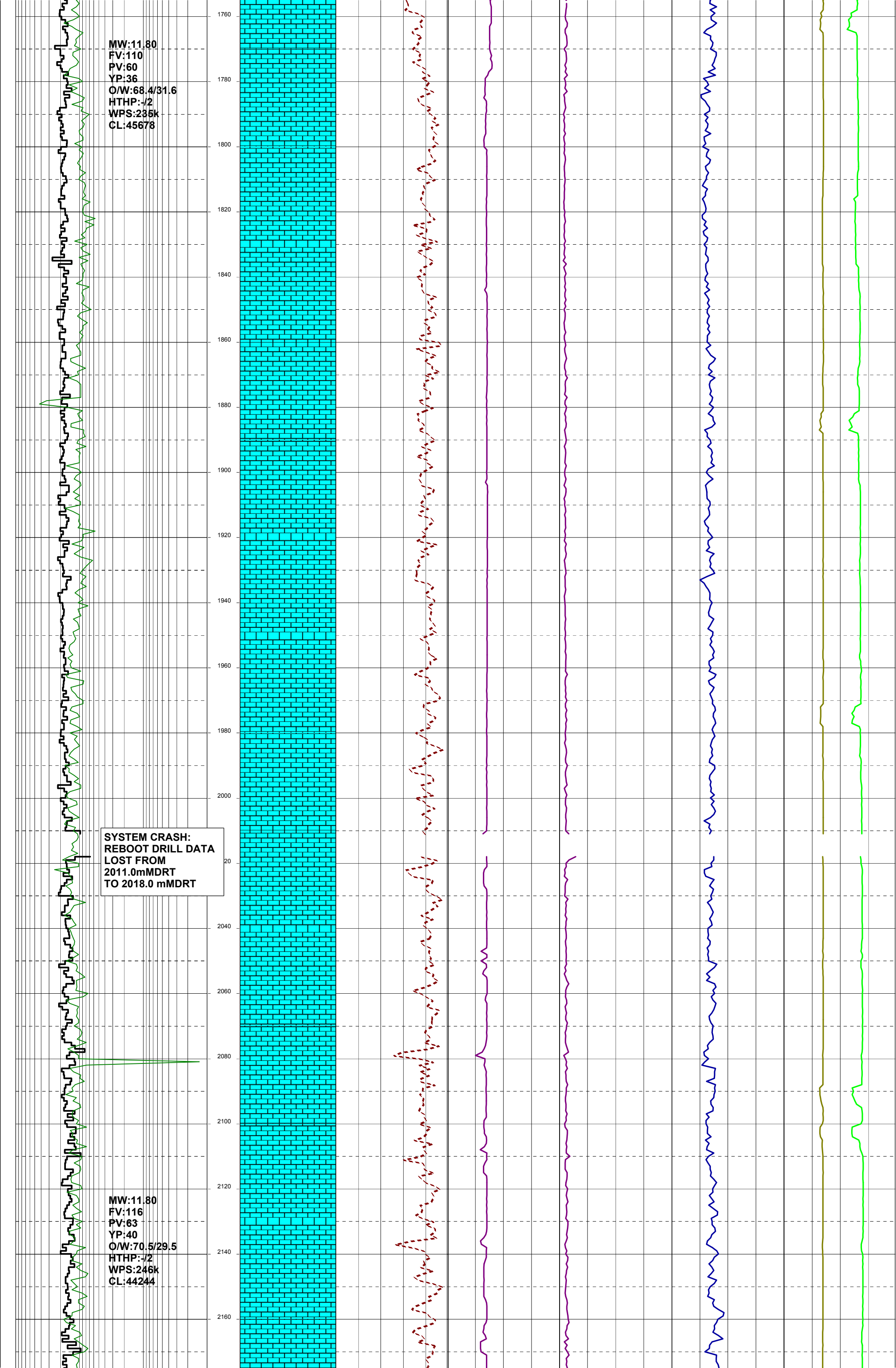
MW:11.80  
FV:104  
PV:57  
YP:35  
O/W:68.4/31.6  
HTHP:-  
WPS:240k  
CL:186967



MW:11.80  
FV:110  
PV:60  
YP:36  
O/W:68.4/31.6  
HTHP:-/2  
WPS:235k  
CL:45678

SYSTEM CRASH:  
REBOOT DRILL DATA  
LOST FROM  
2011.0mMDRT  
TO 2018.0 mMDRT

MW:11.80  
FV:116  
PV:63  
YP:40  
O/W:70.5/29.5  
HTHP:-/2  
WPS:246k  
CL:44244



24-06-09

MW:11.80  
FV:113  
PV:69  
YP:39  
O/W:69.9/30.1  
HTHP:-/3  
WPS:247k  
CL:45403

MW:11.80  
FV:112  
PV:63  
YP:33  
O/W:70.5/29.5  
HTHP:-/2  
WPS:256k  
CL:46484

7" Production casing shoe  
set at 2576.33 mMDRT

Cobia A33 reached TD of  
2579.00mMDRT (2502.15mTVDRT)  
(-2461.15mTVDSS) at 07:30 hrs  
on 24/06/2009

Control drill at 50 m/hr  
from 2371.0 mMDRT

Leak at rig SPP  
fitting - Fixed at  
connection.

[illegible]