

med gy,occ lt bn/gy,slty i/p,mod calc,
com nod pyr,tr micmic,tr ooid,frm-
mod hd,sbbiky-blky.

Top of Latrobe
2760.1mMDRT 1746.5mTVDRT
(-1713.6mTVDSS)

Survey: 2765.84mMD (1749.1mTVD)
62.90°inc 179.13°az

93 / 5 / 2

Survey: 2794.57mMD (1762.4mTVD)
62.25°inc 178.92°az

96 / 3 / 1

96	/	3	/	1
----	---	---	---	---

95 / 3 / 1 / 1

Survey: 2822.91mMD (1775.4mTVD)
63.03°inc 178.85°az

96 / 3 / 1

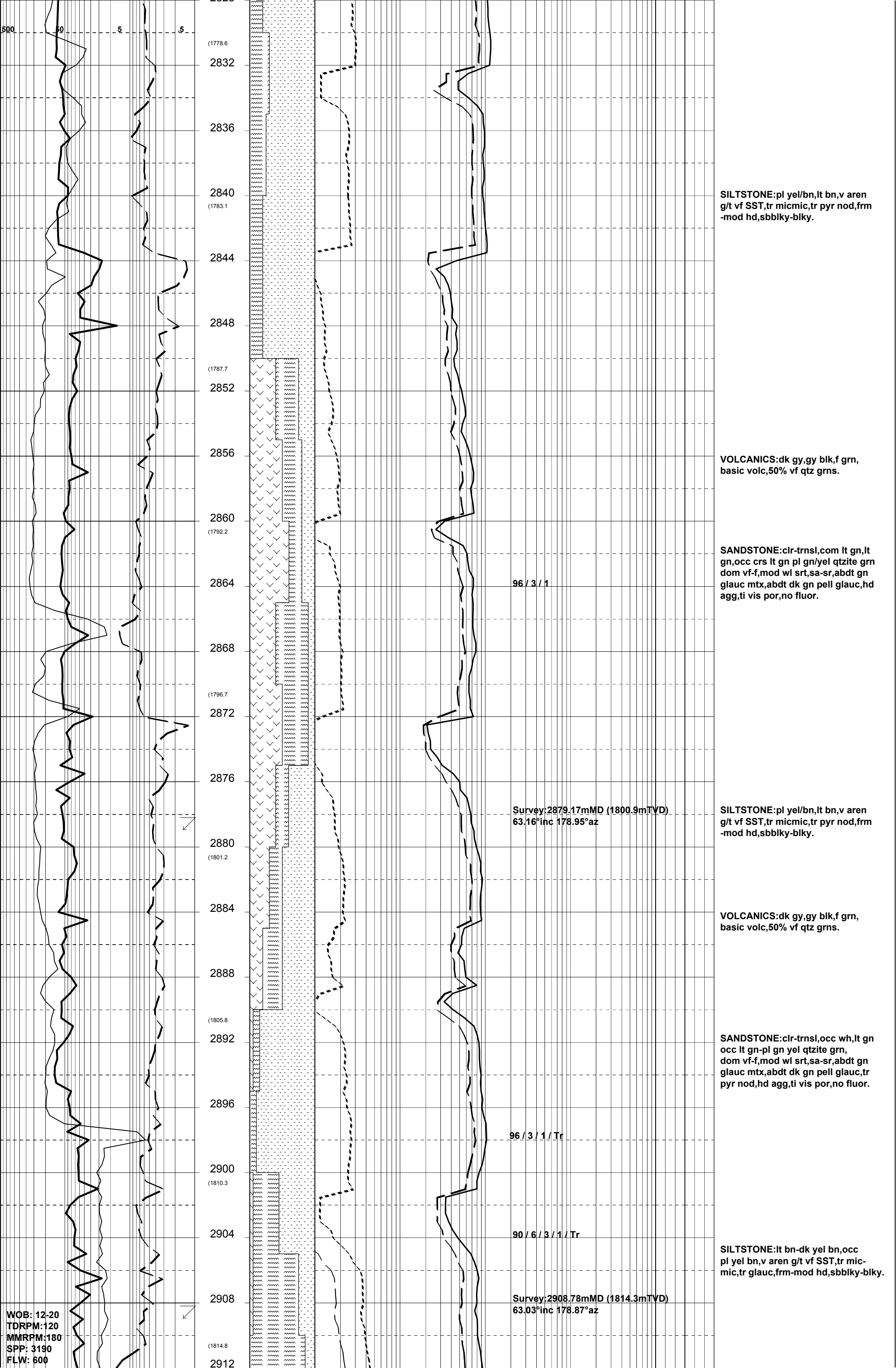
SANDSTONE:clr-trnsl,com lt gn,vf-f,
mod wl srt,sa-sr,abdt glauc mtx,abdt
pell glauc,hd aggs,ti-v pr vis &
inf por,no fluor.

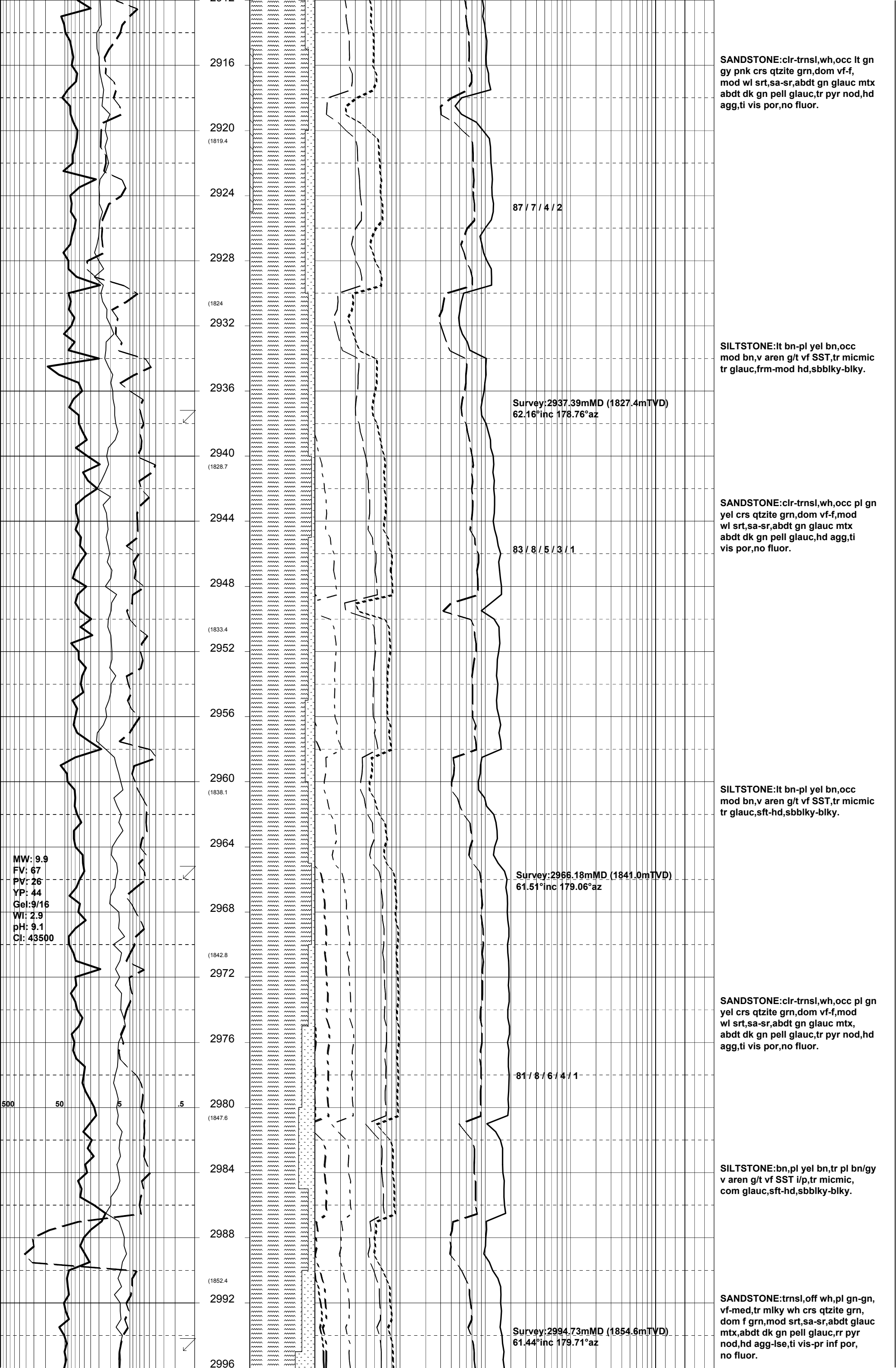
SILTSTONE:pl bn-pl yel/bn,occ dk
yel/bn,v aren g/t vf SST,tr micmic,
tr glauc,mod hd-hd,blky.

CLAYSTONE:v lt gy-lt gy,sli calc,
sft,amor,disp.

SANDSTONE:clr-trnsl,occ wh,rr lt gn
dom vf,occ crs,mod wl srt,sa-sr,abdt
glauc mtx,abdt pell dk gn glauc,hd
aggs,ti-v pr inf & vis por,tr mod bri
yel min fluor.

WOB: 9-12
TDRPM:120
MMRPM:180
SPP: 3190
FLW: 600





11-07-05

WOB: 12-20
TDRPM:110
MMRPM:175
SPP: 3300
FLW: 600

3000
(1857.1)

3004

3008

(1861.9)

3012

3016

3020

(1866.6)

3024

3028

(1871.3)

3032

3036

3040

(1876)

3044

3048

(1880.7)

3052

3056

3060

(1885.4)

3064

3068

(1890.1)

3072

3076

3080

84 / 8 / 5 / 3 / Tr

Survey:3023.58mMD (1868.3mTVD)
62.22°inc 179.38°az

83 / 8 / 5 / 3 / 1

Survey:3052.17mMD (1881.8mTVD)
61.44°inc 178.90°az

83 / 8 / 5 / 3 / 1

83 / 8 / 5 / 3 / 1

Survey:3080.57mMD (1895.1mTVD)

SILTSTONE:v pl bn,pl gy/bn,gn,
arg-aren,g/t CLYST & vf SST i/p,
tr micmic,abdt glauc,rr pyr,sft-frn
sbbiky-amor.

CLAYSTONE:v pl bn,gn,slty i/p,
abdt glauc,stky,amor-blky.

SANDSTONE:clr-trnsl,pl gn,vf-med,
mod wl srt,sa-sr,abdt glauc mtx,
com dk gn pell glauc,rr pyr,hd agg,
pr inf & vis por,no fluor.

SILTSTONE:pl bn,pl gn,bn/gy,aren,
tr micmic,abdt glauc,sft-mod hd,
amor-blky,g/t CLYST,g/t vf SST i/p.

SANDSTONE:clr-trnsl,pl gn,vf-med,
mod wl srt,sa-sr,abdt glauc mtx,
com dk gn pell glauc,rr pyr,hd agg,
pr inf & vis por,no fluor.

CLAYSTONE:pl bn,pl gn,slty i/p,
glauc,tr pyr,stky,amor-blky.

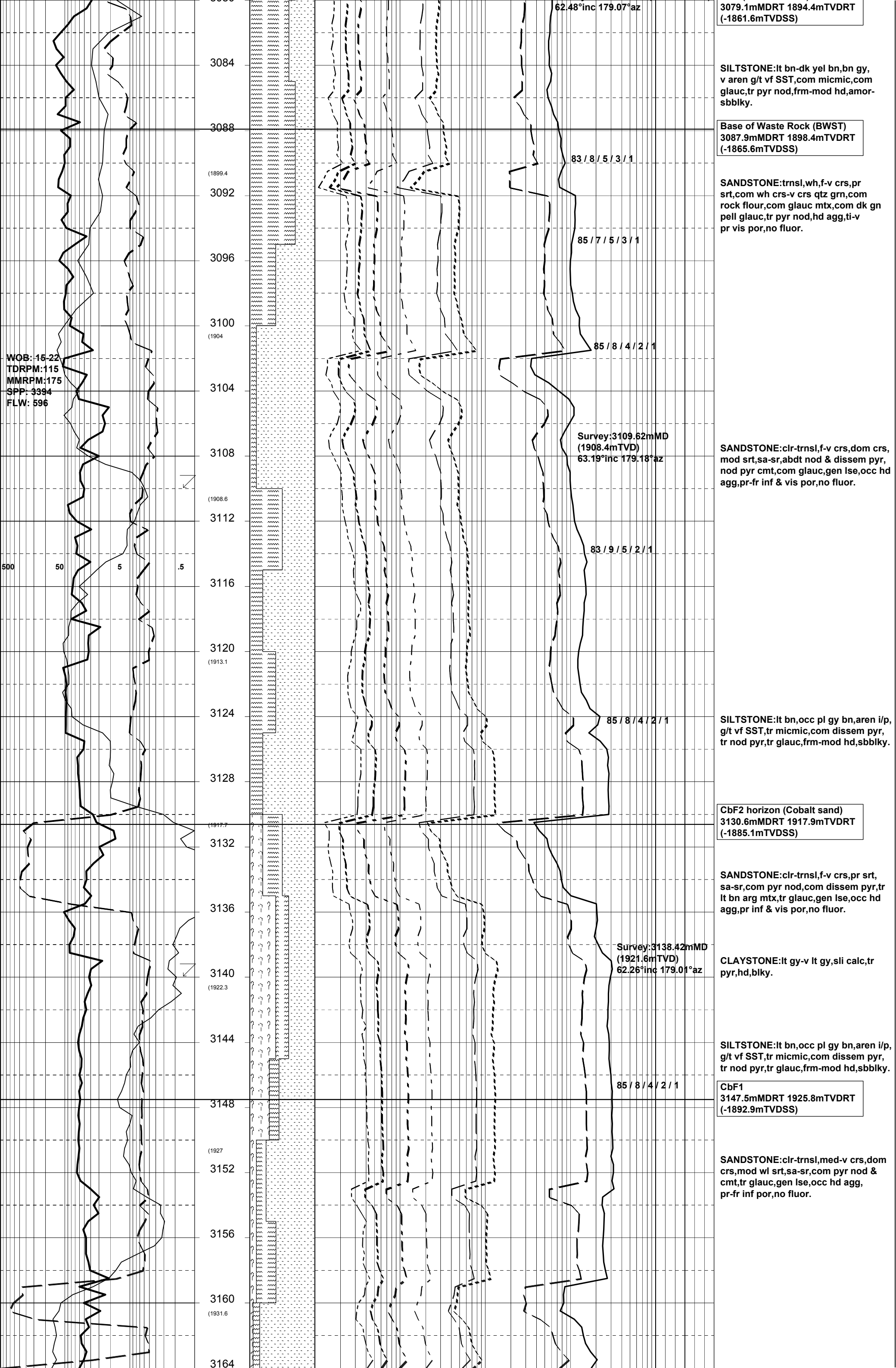
SANDSTONE:clr-trnsl,pl gy,lt bn,
occ crs wh/gn qtzite grn,vf-f,mod
wl srt,sa-sr,g/t aren SLTST,com
pell glauc,tr pyr,com mtx,hd agg-
fri i/p,ti-v pr vis por,no fluor.

CLAYSTONE:lt gy,lt gy/bn,pl gn,
slty i/p,tr micmic,tr glauc,sft
-frn,amor-sbbiky.

SILTSTONE:lt bn-dk yel bn,bn gy,
v aren g/t vf SST,com micmic,com
glauc,tr pyr nod,frm-mod hd,amor-
sbbiky.

SANDSTONE:trnsl,wh,f-v crs,pr
srt,com wh crs-v crs qtz grn,com
rock flour,com glauc mtx,com dk gn
pell glauc,tr pyr nod,hd agg,ti-v
pr vis por,no fluor.

TCC (N-1 Reservoir)



3079.1mMDRT 1894.4mTVDRT
(-1861.6mTVDSS)

SILTSTONE:lt bn-dk yel bn,bn gy,
v aren g/t vf SST,com micmic,com
glauc,tr pyr nod,frm-mod hd,amor-
sbbiky.

Base of Waste Rock (BWST)
3087.9mMDRT 1898.4mTVDRT
(-1865.6mTVDSS)

SANDSTONE:trnsI,wh,f-v crs,pr
srt,com wh crs-v crs qtz grn,com
rock flour,com glauc mtx,com dk gn
pell glauc,tr pyr nod,hd agg,ti-v
pr vis por,no fluor.

SANDSTONE:clr-trnsI,f-v crs,dom crs,
mod srt,sa-sr,abdt nod & disseminated
pyr, nod pyr cmt,com glauc,gen lse,occ hd
agg,pr-fr inf & vis por,no fluor.

SILTSTONE:lt bn,occ pl gy bn,aren i/p,
g/t vf SST,tr micmic,com disseminated
pyr, tr nod pyr,tr glauc,frm-mod hd,sbbiky.

CbF2 horizon (Cobalt sand)
3130.6mMDRT 1917.9mTVDRT
(-1885.1mTVDSS)

SANDSTONE:clr-trnsI,f-v crs,pr srt,
sa-sr,com pyr nod,com disseminated
pyr, tr lt bn arg mtx,tr glauc,gen lse,occ hd
agg,pr inf & vis por,no fluor.

CLAYSTONE:lt gy-v lt gy,sli calc,tr
pyr,hd,blky.

SILTSTONE:lt bn,occ pl gy bn,aren i/p,
g/t vf SST,tr micmic,com disseminated
pyr, tr nod pyr,tr glauc,frm-mod hd,sbbiky.

CbF1
3147.5mMDRT 1925.8mTVDRT
(-1892.9mTVDSS)

SANDSTONE:clr-trnsI,med-v crs,dom
crs,mod wl srt,sa-sr,com pyr nod &
cmt,tr glauc,gen lse,occ hd agg,
pr-fr inf por,no fluor.

