

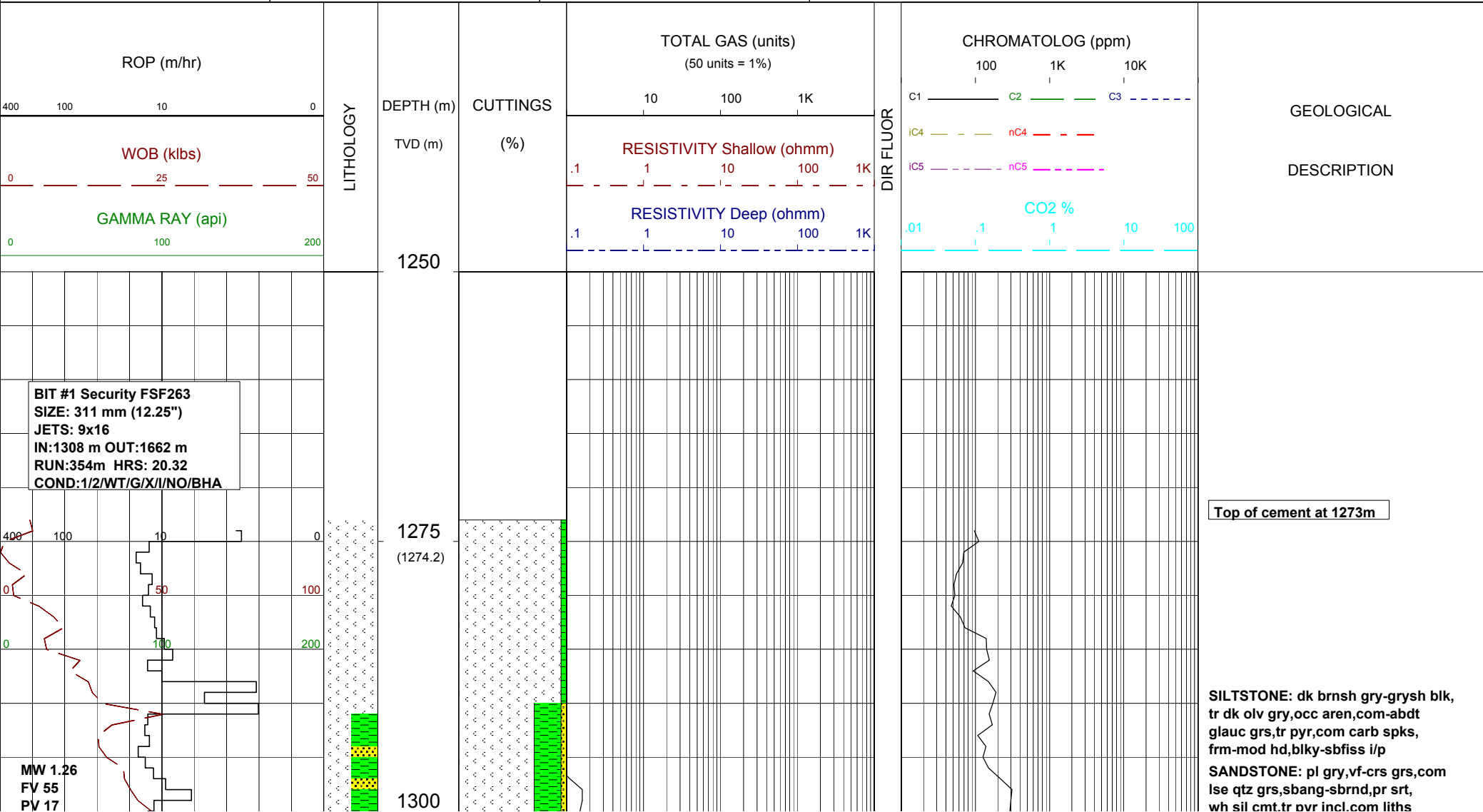
Santos

CASINO 4DW1

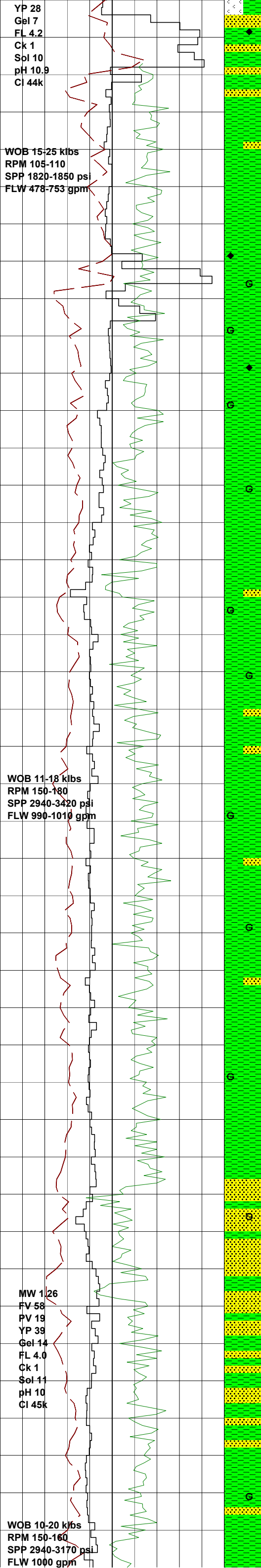


Basin : OTWAY	LAT - RT (m) : 22	Rig : OCEAN PATRIOT	Open Hole:	Cased Hole:	Engineers : D. ADDERLEY
Permit : VIC-P44	Seabed - LAT (m) : 70.8	Spud Date : 21-05-2005	36" 137.4m	30"/20" 137.4m	S. LONG
State : VICTORIA	Seabed - RT (m) : 92.8	TD Date : 22-05-2005	17.5" 742m	13.375" 727.9m	
Country : AUSTRALIA	Lat. : 38°47'13.03"S	Total Depth : 1662m	12.25" 1662m		Loggers : P. MISQUITTA
Scale : 1/ 500	Long. : 142°41'54.49"E	Final Status : PLUG & SIDETRACK			S. PROSSER

LITHOLOGY	ACCESSORIES	DRILLING DATA	ABBREVIATIONS	
<div><div></div> Conglomerate</div> <div><div></div> Coarse Sandstone</div> <div><div></div> Med Sandstone</div> <div><div></div> Fine Sandstone</div> <div><div></div> Marl</div> <div><div></div> Siltstone</div> <div><div></div> Carb. Siltstone</div> <div><div></div> Calc. Siltstone</div> <div><div></div> Clay</div> <div><div></div> Limestone</div> <div><div></div> Dolomite</div> <div><div></div> Coal</div> <div><div></div> Calcilutite</div> <div><div></div> Calcisiltite</div> <div><div></div> Calcarenite</div> <div><div></div> Volcanic</div> <div><div></div> Metamorphic</div> <div><div></div> Cement</div>	<div><div></div> Pyrite</div> <div><div></div> Siderite</div> <div><div>G</div> Glauconite</div> <div><div>F</div> Feldspar</div> <div><div>M</div> Mica</div> <div><div>Fe</div> Ferrous</div> <div><div></div> Chert</div> <div><div></div> Calcareous</div> <div><div></div> Dolomitic</div> <div><div></div> Carbonaceous</div> <div><div>L</div> Lithoclast</div> <div><div></div> Breccia</div> <div><div></div> Foraminifera</div> <div><div></div> Corals</div> <div><div>II</div> Inoceramus</div> <div><div></div> Bryozoa</div> <div><div></div> Plant remains</div> <div><div></div> Fossils</div>	<div><div></div> Casing Shoe</div> <div><div></div> Bit Trip</div> <div><div></div> Wiper Trip</div> <div><div></div> Core</div> <div><div></div> DST</div> <div><div></div> Deviation Survey</div>	BOPD - Barrels of Oil Per Day BWPD - Barrels of Water Per Day CG - Connection Gas CO - Circulate Out COND - Condensate c/c - Crush Cut DST - Drill Stem Test FLOW - Flow Rate (gal/min) GCM - Gas Cut Mud GCW - Gas Cut Water GTS - Gas To Surface INJ - Injection of Mist (bbls/hr) LCM - Lost Circulation Material MMCFD- Million Cubic Feet / Day NGTS - No Gas To Surface NOTS - No Oil To Surface NR - No Returns OCM - Oil Cut Mud	OG - Over Gauge OH - Open Hole OTS - Oil To Surface Q - Flow Rate REC - Recovery Rmf - Resistivity Mud Filtrate ROP - Rate Of Penetration RPM - Revolutions Per Minute RTSTM- Rate Too Small To Measure Rw - Resistivity water r/r - Ring Residue SCFM - Standard Cubic ft/min (air) SGCM - Slightly Gas Cut Mud SPM - Strokes Per Minute SPP - Stand Pipe Pressure SWC - Side-Wall Core TG - Trip Gas WOB - Weight On Bit
		<div>MUD DATA</div> <div>MW - Mud Weight</div> <div>FV - Funnel Viscosity (s/qt)</div> <div>PV - Plastic Viscosity (cps)</div> <div>YP - Yield Point (lb/100ftsq)</div> <div>Gel - Gel Strength (10sec)</div> <div>WL - Water Loss (cc/30min)</div> <div>pH - Acidity / Alkalinity</div> <div>Ck - Cake (32nd/inch)</div> <div>Sol - Solids (% vol)</div> <div>Cl - Chlorides (mg/l)</div>		



WOB 10-20 klbs
RPM 150-160
SPP 2940-3170 psi
FLW 1000 gpm



1500
(1493.3)

99 / 1 / Tr / Tr

Gas trap failure
Fix degasser pump

CARBIDE LAG CHECK @ 1513m

