

Dog Leg Severity
Computation

* A Mark of Schlumberger

Using the following logs: GPIT

COMPANY:

WELL: Glenaire-1 ST1

FIELD: Exploration

Victoria

COUNTRY: Australia

Date Logged: 26-Sep-06

Well Location:

Date Processed: 27-Sep-06

Elevations:

KB:

DF:

GL:

API Number:

Job Number:

FOLD HERE

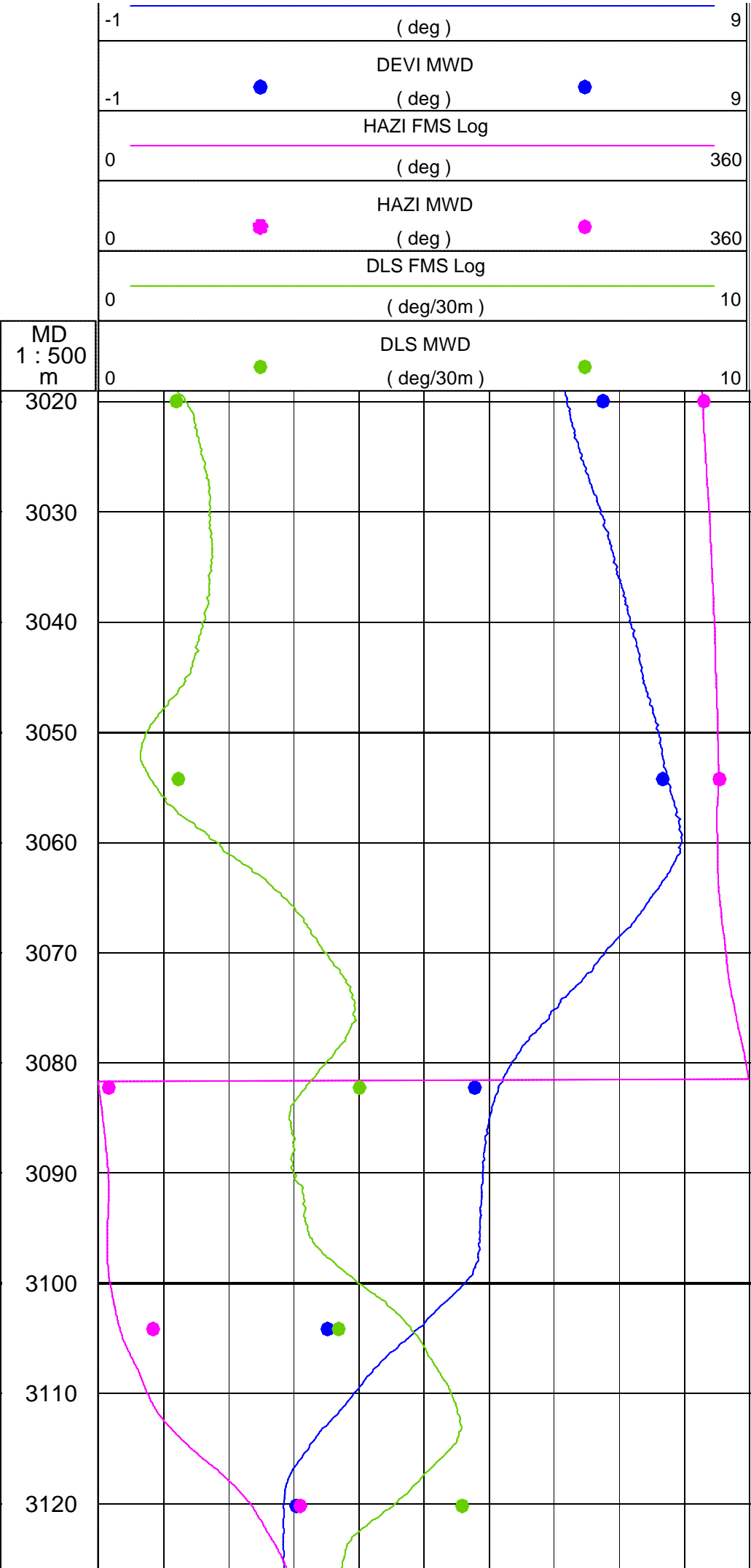
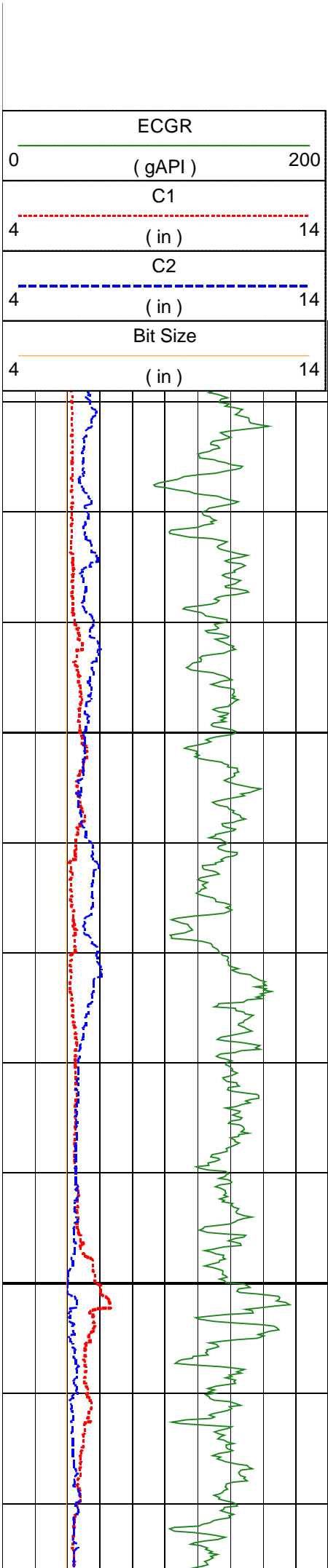
The well name, location and borehole reference data were furnished by the customer.

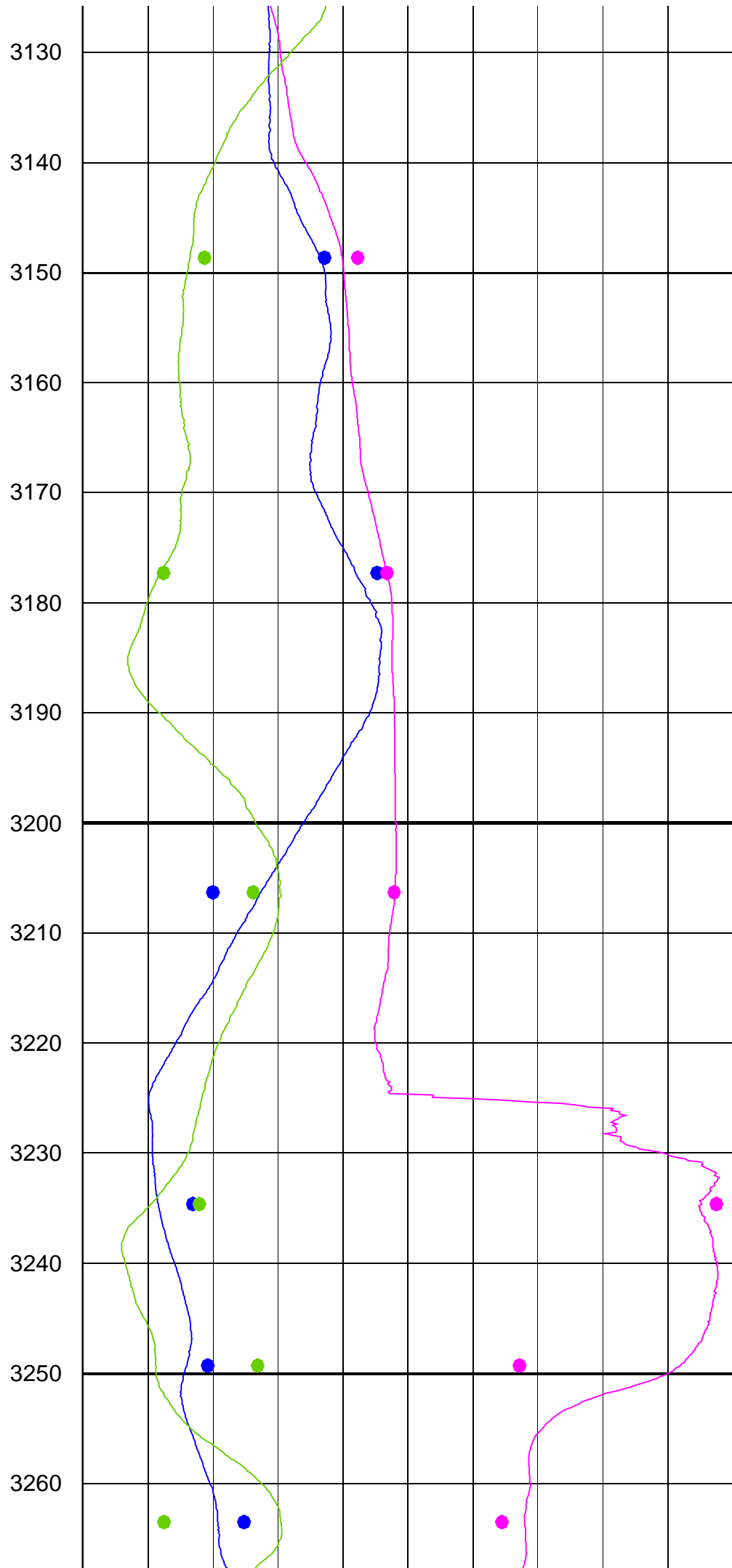
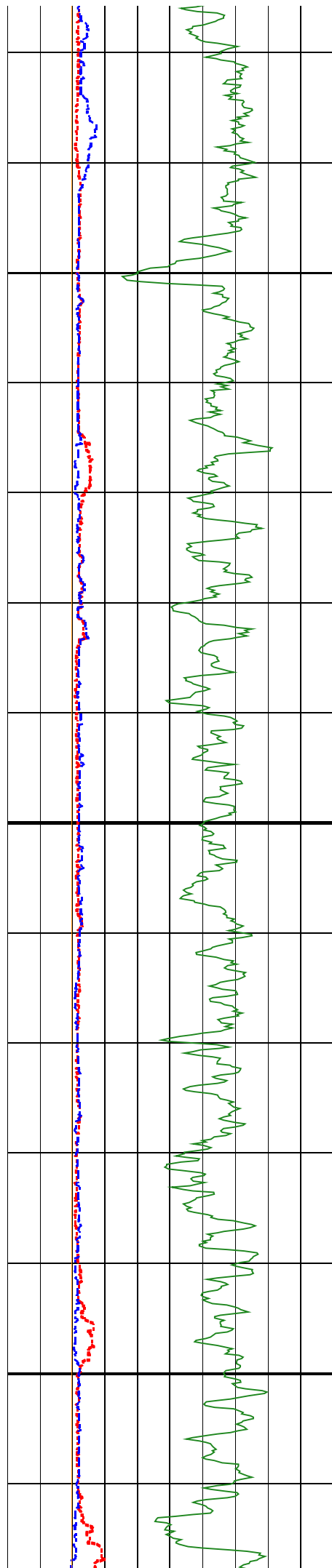
All interpretations are opinions based on inferences from electrical or other measurements and we cannot, and do not guarantee the accuracy or correctness of any interpretation, and we shall not, except in the case of gross or willful negligence on our part, be liable or responsible for any loss, costs, damages or expenses incurred or sustained by anyone resulting from any interpretations made by any of our officers, agents or employees. These interpretations are also subject to Clause 4 of our General Terms and Conditions as set out in our current Price Schedule.

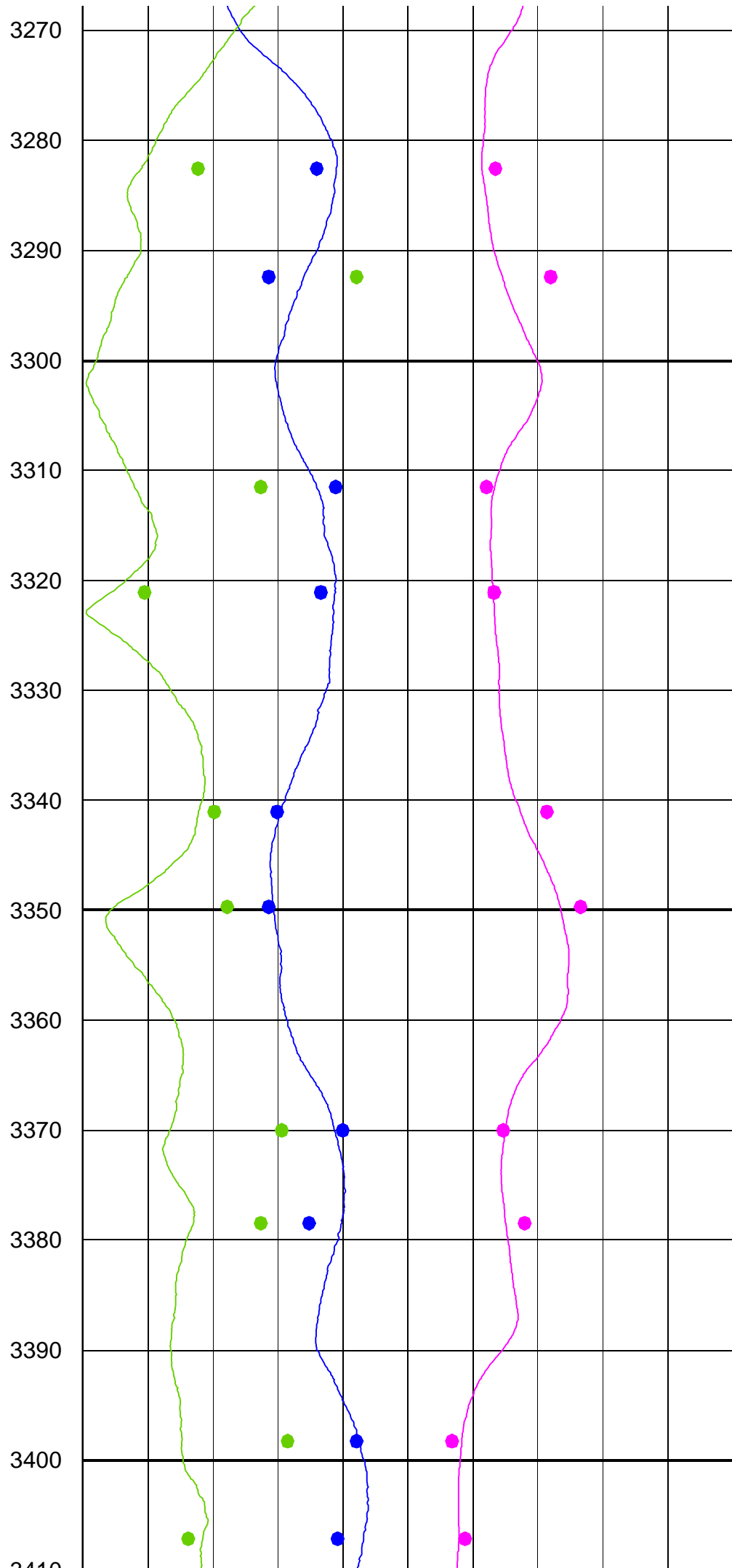
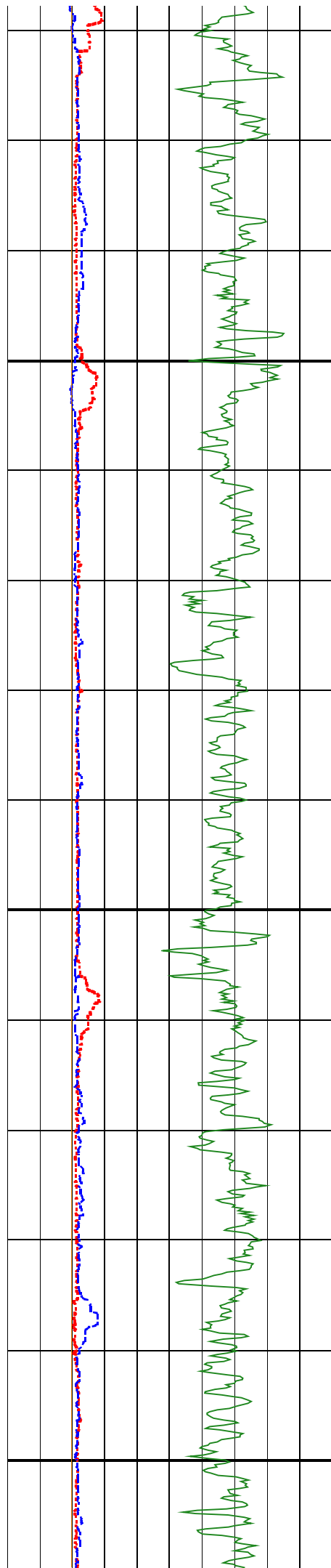
Field Recording:	Location:	Software VersionGF 4.2 DC2	Engineer:
Office Recording:	ICS Center:	Baseline:	Log Analyst: A. Datey
Mud and Borehole Measurements:			
Rm @ Measured Temperature:	@	BHT:	Bitsize: 6in
Rmf @ Measured Temperature:	@	Type Fluid in Hole:	
Rmc @ Measured Temperature:	@	Mud Density:	

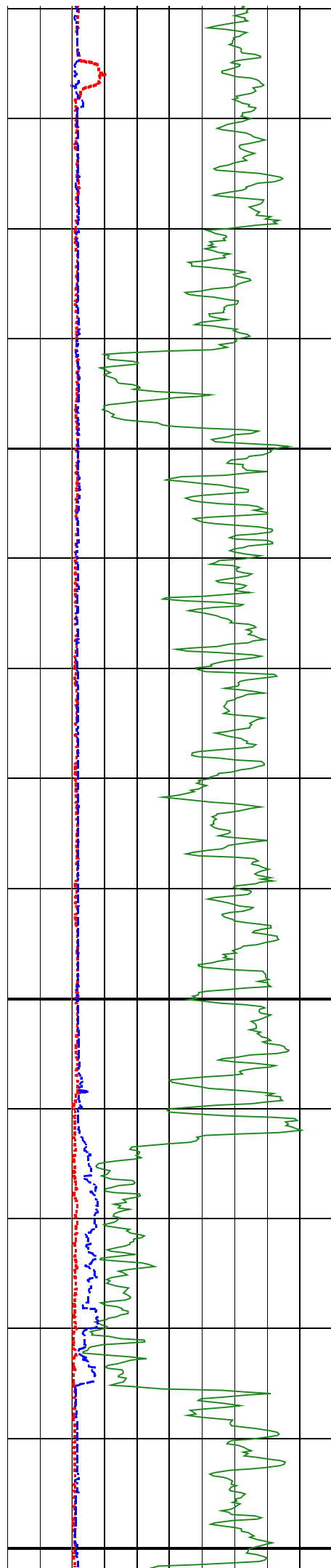
Remarks:

Dog Leg Severity computed using GPIT Data from FMS Log.
Log presented with MWD and GPIT data.

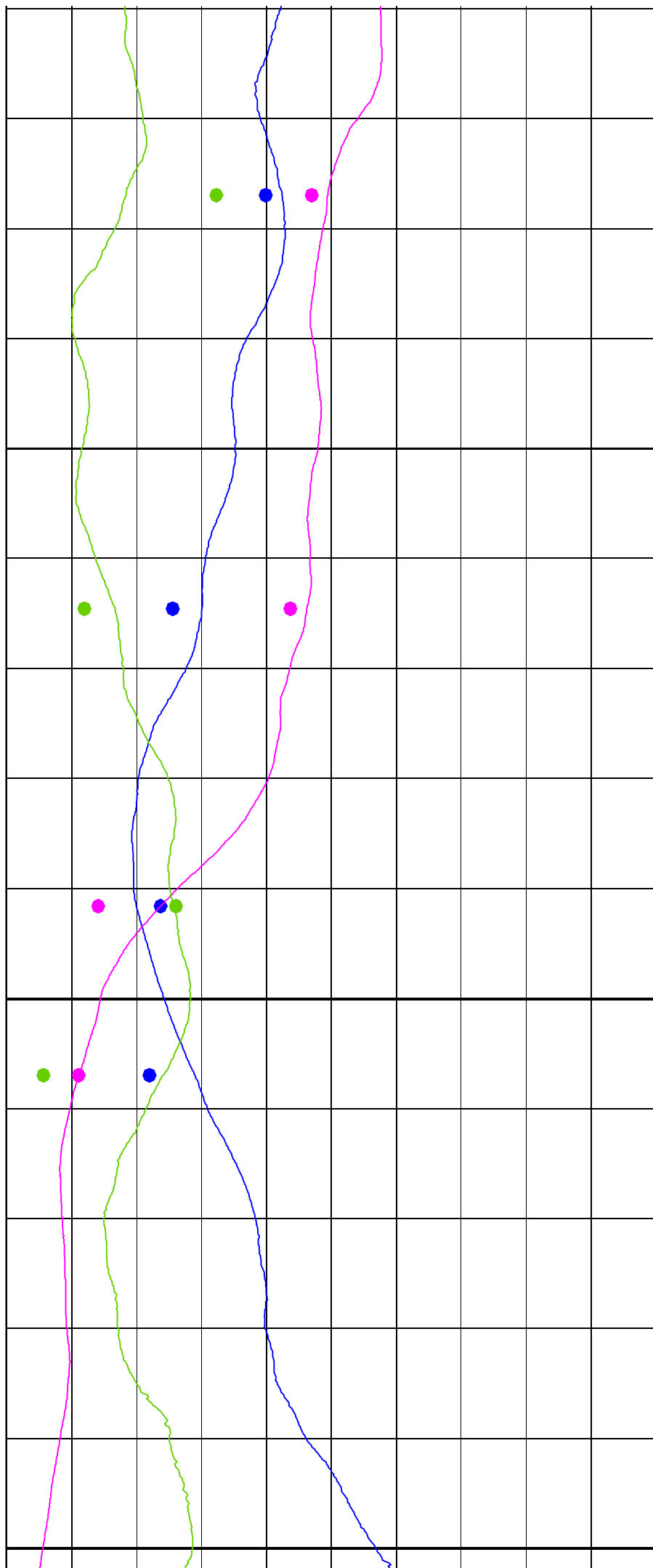


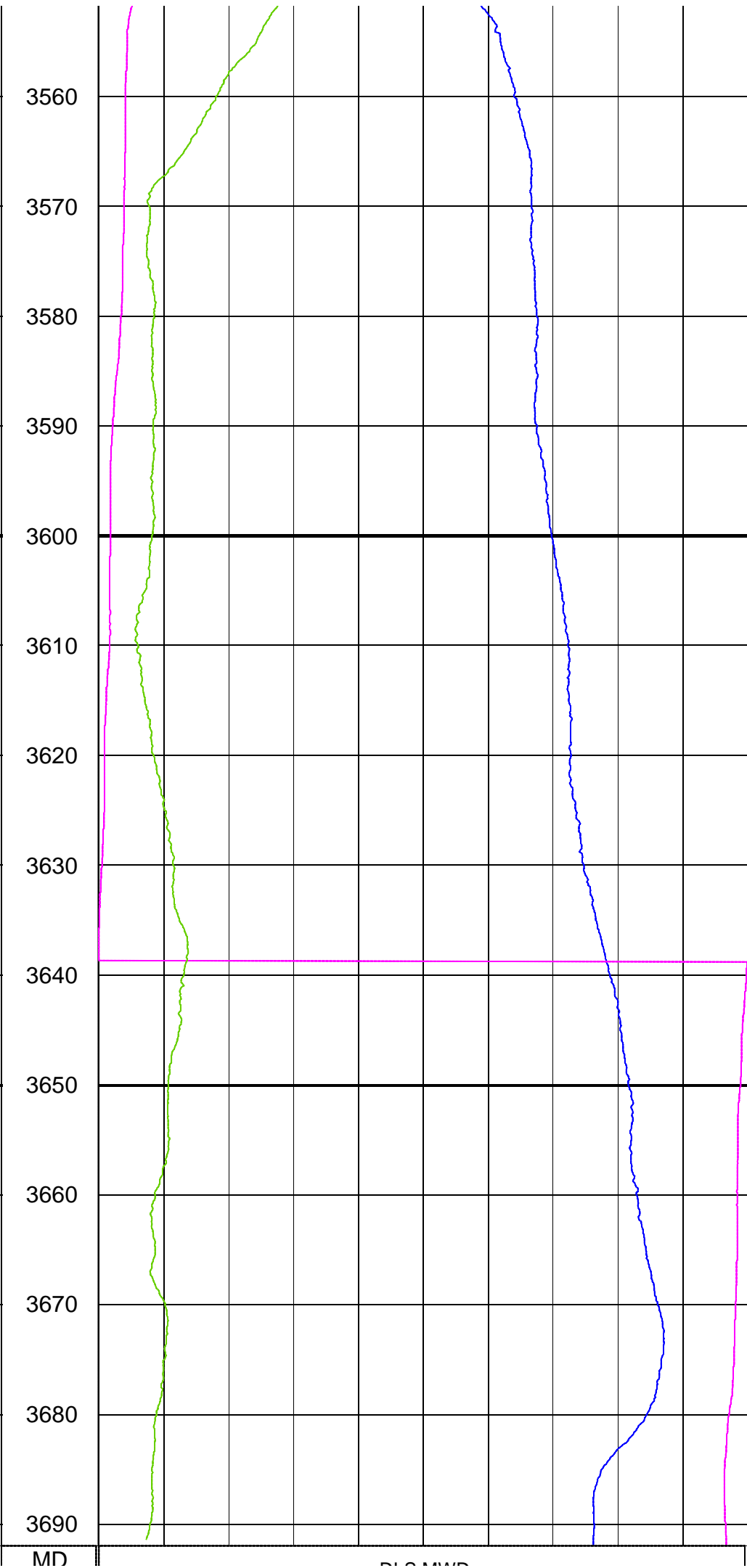
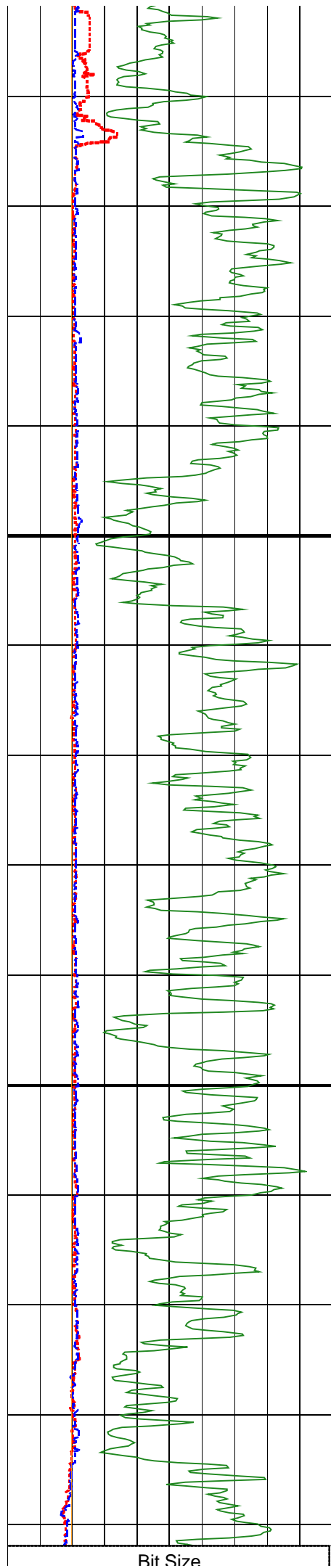






3410
3420
3430
3440
3450
3460
3470
3480
3490
3500
3510
3520
3530
3540
3550





<div>DR C120</div> <div><div>4</div><div>(in)</div><div>14</div></div>	1 : 500 m	<div>DLS MWD</div> <div><div>0</div><div>(deg/30m)</div><div>10</div></div>	
<div>C2</div> <div><div>4</div><div>(in)</div><div>14</div></div>		<div>DLS FMS Log</div> <div><div>0</div><div>(deg/30m)</div><div>10</div></div>	
<div>C1</div> <div><div>4</div><div>(in)</div><div>14</div></div>		<div>HAZI MWD</div> <div><div>0</div><div>(deg)</div><div>360</div></div>	
<div>ECGR</div> <div><div>0</div><div>(gAPI)</div><div>200</div></div>		<div>HAZI FMS Log</div> <div><div>0</div><div>(deg)</div><div>360</div></div>	
		<div>DEVI MWD</div> <div><div>-1</div><div>(deg)</div><div>9</div></div>	
		<div>DEVI FMS Log</div> <div><div>-1</div><div>(deg)</div><div>9</div></div>	