



Company: Esso Australia Pty Ltd.

Well: A-17A  
Field: Flounder  
Rig : Prod4 / Ausl

Country: Australia

2 1/2" Powerjet Spiral  
Perforation  
MWPT Record

Prod4 / Ausl  
Flounder  
Gippsland  
A-17A  
Esso Australia Pty Ltd.

Logging Date	8-Feb-2007		
Run Number	One		
Depth Driller	3493 m		
Schlumberger Depth	3260 m		
Bottom Log Interval	3260 m		
Top Log Interval	3220 m		
Casing Fluid Type	Production Fluids		
Salinity			
Density			
Fluid Level			
BIT/CASING/TUBING STRING			
Bit Size	6.000 in		
From			
To			
Casing/Tubing Size	4.500 in		
Weight	12.6 lbn/ft		
Grade	Vam-Ace		
From	2610 m		
To	3636 m		
Maximum Recorded Temperatures	231 degF		
Logger On Bottom	8-Feb-2007	Time	16:30
Unit Number	889	Location	Prod4
Recorded By	G Wright / A McGill.		
Witnessed By	B White / B Robinson.		

Run 1			
Oil Density			
Water Salinity			
Gas Gravity			
Bo			
Bw			
1/Bg			
Bubble Point Pressure			
Bubble Point Temperature			
Solution GOR			
Maximum Deviation			
CEMENTING DATA			
Primary/Squeeze			
Casing String No			
Lead Cement Type			
Volume			
Density			
Water Loss			
Additives			
Tail Cement Type			
Volume			
Density			
Water Loss			
Additives			
Expected Cement Top			
Logging Date			
Run Number			
Depth Driller			
Schlumberger Depth			
Bottom Log Interval			
Top Log Interval			
Casing Fluid Type			
Salinity			
Density			
Fluid Level			
BIT/CASING/TUBING STRING			
Bit Size			
From			
To			
Casing/Tubing Size			
Weight			
Grade			
From			
To			
Maximum Recorded Temperatures			
Logger On Bottom			
Unit Number			
Recorded By			
Witnessed By			

THE USE OF AND RELIANCE UPON THIS RECORDED-DATA BY THE HEREIN NAMED COMPANY (AND ANY OF ITS AFFILIATES, PARTNERS, REPRESENTATIVES, AGENTS, CONSULTANTS AND EMPLOYEES) IS SUBJECT TO THE TERMS AND CONDITIONS AGREED UPON BETWEEN SCHLUMBERGER AND THE COMPANY, INCLUDING: (a) RESTRICTIONS ON USE OF THE RECORDED-DATA; (b) DISCLAIMERS AND WAIVERS OF WARRANTIES AND REPRESENTATIONS REGARDING COMPANY'S USE OF AND RELIANCE UPON THE RECORDED-DATA; AND (c) CUSTOMER'S FULL AND SOLE RESPONSIBILITY FOR ANY INFERENCE DRAWN OR DECISION MADE IN CONNECTION WITH THE USE OF THIS RECORDED-DATA.

OTHER SERVICES1  
OS1: None

REMARKS: RUN NUMBER 1
Log correlated to Solar composite supplied with logging program.
Maximum well deviation = 49 degrees at 2946m MDKB.
This well perforated with 2.5"5 spf Pendulum Phased Spiral Powerjet gun with MWPT.
Interval perforated was 3237m to 3240m MDKB.
SBHP = 2707 psia,2414 psia stable after perforating.
SBHT = 231 degf,increased to 251 degf after gun fired.
Gun was fired with a 300 psia underbalance,shot at 2400 psia.
Initial response of the well was to decrease to 2140 psia then to steadily build up to 2414 psia stable SBHP.
Well did not flow into the system at all due to lack of pressure.

Crew : J Annear,A Hall,P Lawrennce,G Martin.

SERVICE ORDER #: Ausl07336257  
PROGRAM VERSION: 14C0-302  
FLUID LEVEL:

LOGGED INTERVAL	START	STOP

[illegible]

## RUN 1

## SURFACE EQUIPMENT

MWPM-AA

## DOWNHOLE EQUIPMENT







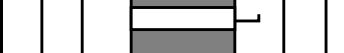



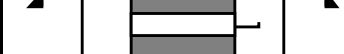





AH-SWBS 731

13.47

AH-SWBS 761

12.79



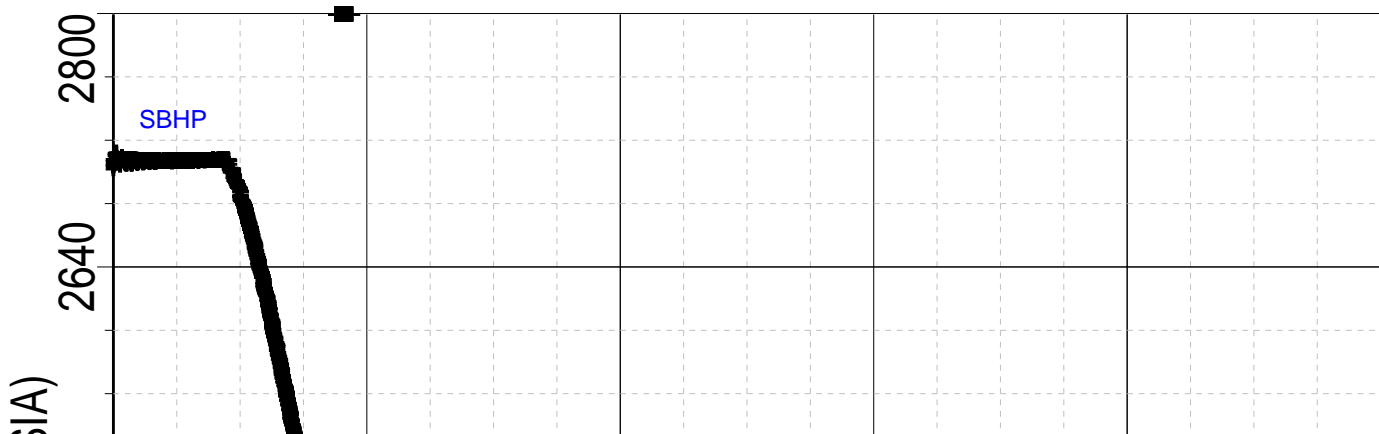
Tubing	4.000		12.4		13.6 13.5	10.925 10.750	7.625	Casing String Liner Hanger
SSSV	4.000		453.8					
Gas Lift Mandrel	4.000		871.0					
Gas Lift Mandrel	4.000		1385.0		1256.0	10.750		Casing Shoe
Gas Lift Mandrel	4.000		1646.0					
Gas Lift Mandrel	4.000		2089.0					
Nipple, Landing Nipple	4.000		2106.0					
Nipple, No Go Nipple	4.000		2605.0		2310.0 2310.0	4.500 7.625	4.500	Liner Liner Hanger
					2900.0	7.625		Casing Shoe
Bridge Plug	4.500	0.000	3491.0		3237.0 3491.0			Perforation Zone Cement
Bridge Plug	4.500	0.000	3512.0		3495.0 3512.0			Perforation Zone 0, Cement
Bridge Plug	4.500	0.000	3539.0		3520.0 3535.0			Perforation Zone Perforation Zone
					3536.0			0, Cement
					3540.0			Perforation Zone
					3656.0	4.500		Casing Shoe
					3636.0			0, Plug

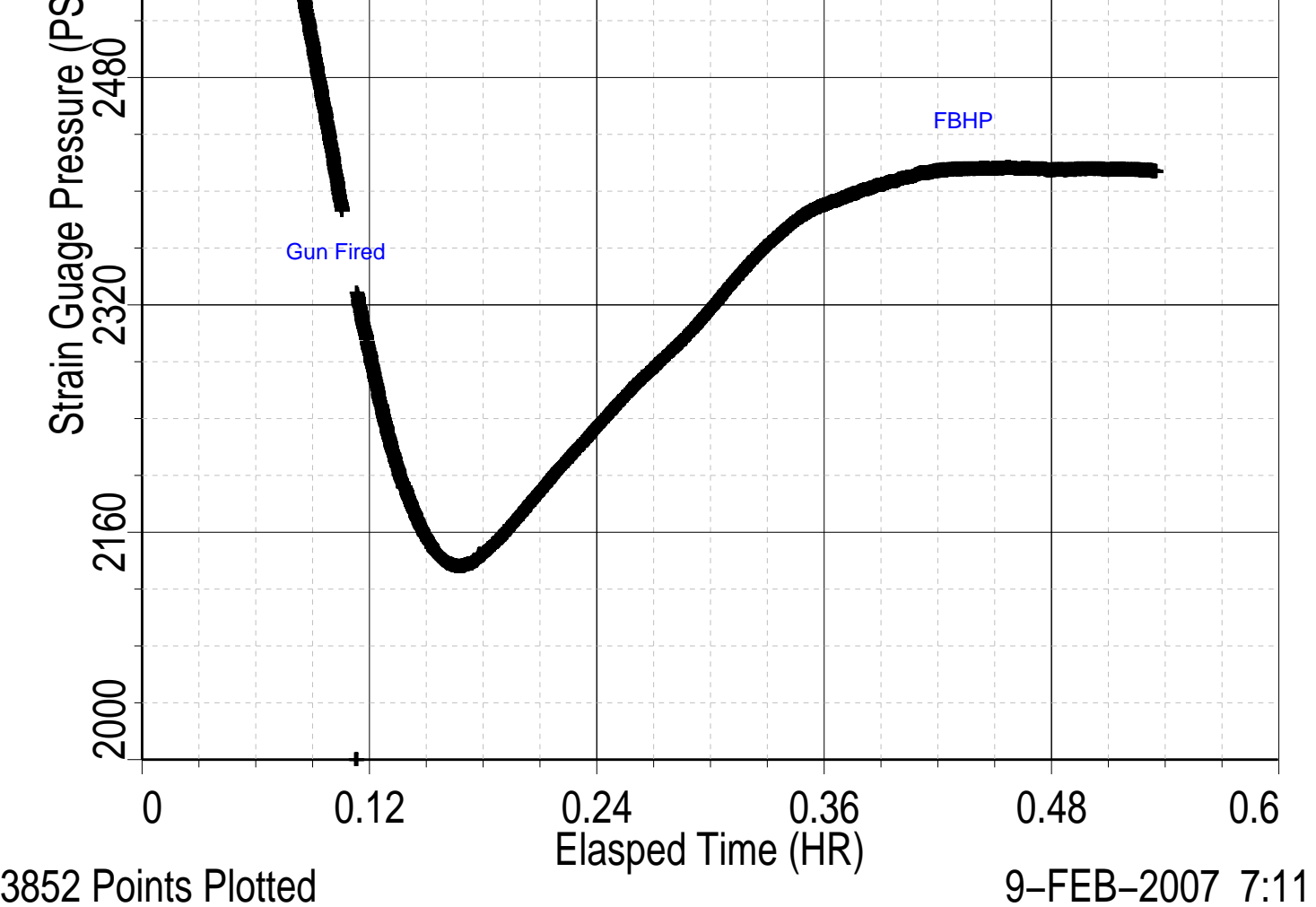
Schlumberger

Gun # 1  
3237m to 3240m MDKB

MAXIS Field Log

Index: 12268.2 – 22049.7 M





TIME	PSIA	DEGF
4320.0	2414.6695	232.2505
4260.0	2415.5037	232.3031
4200.0	2415.6778	232.3510
4140.0	2414.8437	232.3984
4080.0	2416.2468	232.4609
4020.0	2416.5111	232.5231
3960.0	2415.6467	232.5725
3900.0	2413.2498	232.6366
3840.0	2407.1718	232.7100
3780.0	2400.2438	232.7652
3720.0	2391.6236	232.8527
3660.0	2379.8697	232.9309
3600.0	2360.9608	233.0232
3540.0	2337.3083	233.1302
3480.0	2310.7785	233.2687
3420.0	2287.6416	233.4289
3360.0	2266.2480	233.6900
3300.0	2242.9587	234.0291
3240.0	2218.0893	234.5181
3180.0	2193.2407	235.1706
3120.0	2166.7225	236.1744
3060.0	2144.5394	238.0335
3000.0	2137.8180	241.1001
2940.0	2167.5050	246.4423
2880.0	2232.7162	251.5481
2820.0	9999999.9999	179078.9688

2760.0	2461.0488	231.1994
2700.0	2578.0722	231.2958
2640.0	2676.2801	231.3228
2580.0	2707.4131	231.3368
2520.0	2706.9035	231.3405
2460.0	2707.3084	231.3488
2400.0	2708.2019	231.3467

Schlumberger

Shooting Pass

MAXIS Field Log

Company: Esso Australia Pty Ltd.

Well: A-17A

Output DLIS Files

DEFAULT	PERFO_013LUP	FN:12	PRODUCER	08-Feb-2007 16:40	3255.1 M	3217.8 M
---------	--------------	-------	----------	-------------------	----------	----------

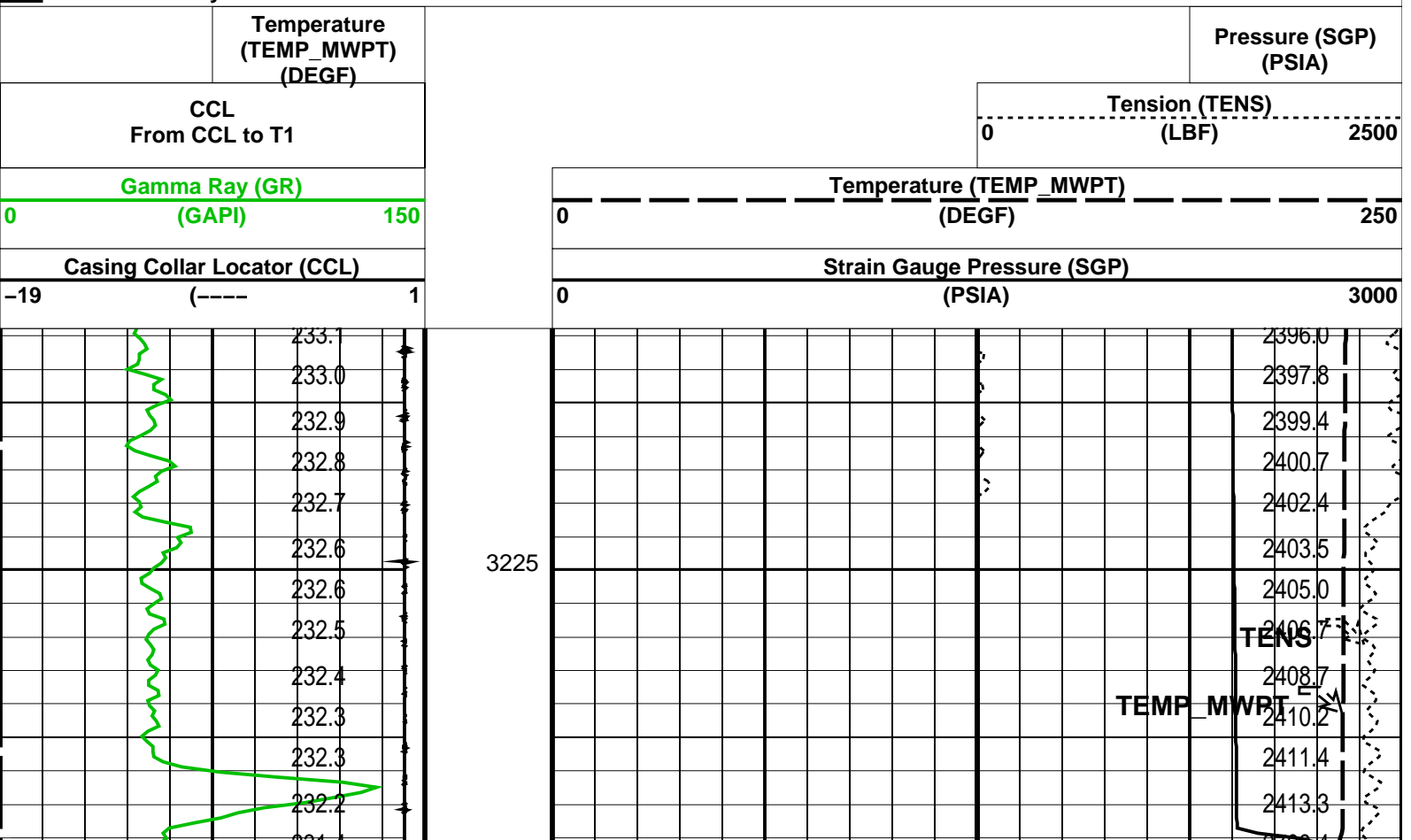
OP System Version: 14C0-302

MCM

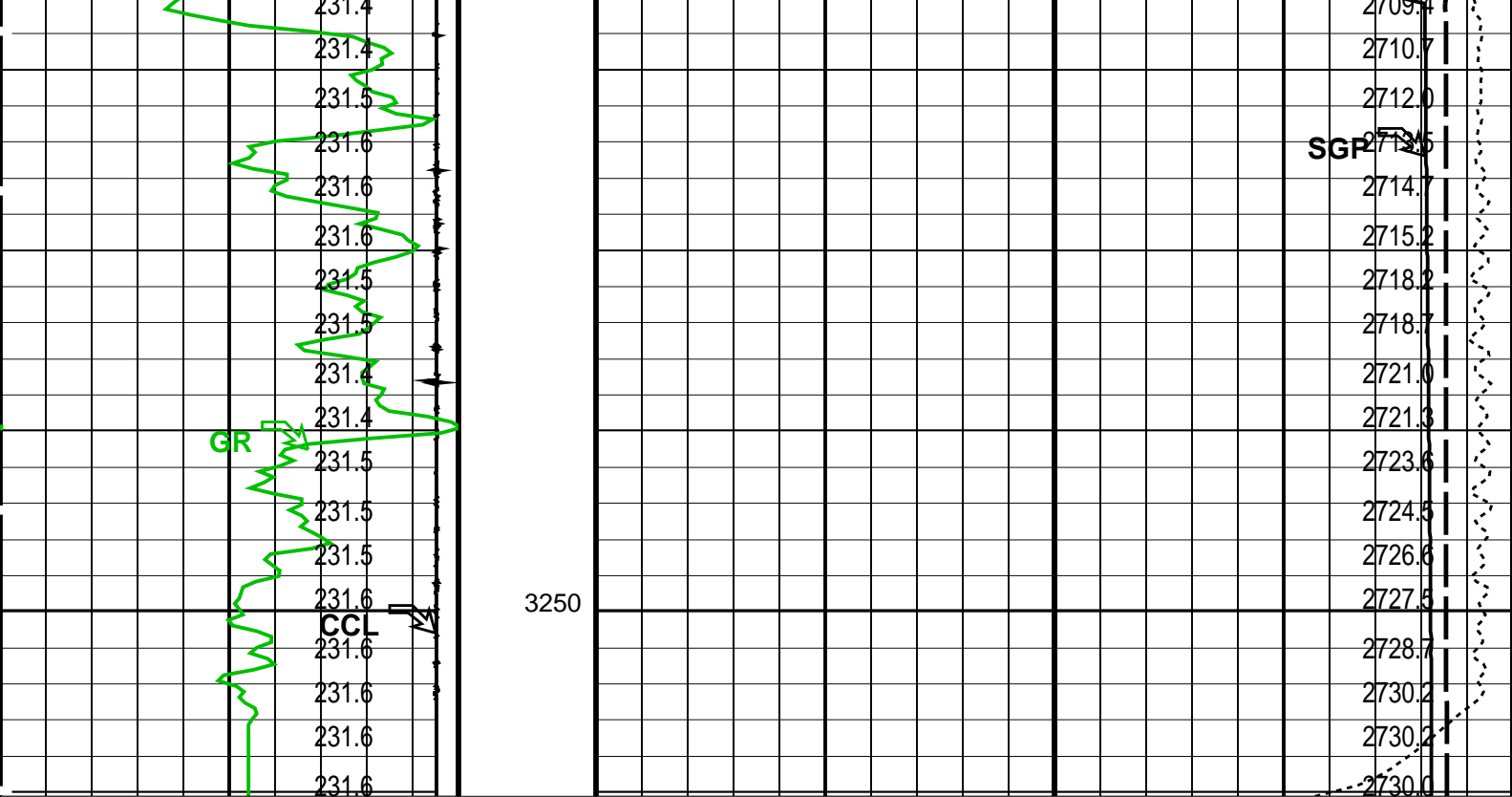
MWP_GUN	SRC-3220-WPP-AAP5	MWPT-CA	SRC-3220-WPP-AAP5
MWGT-BA	SRC-3220-WPP-AAP5		

PIP SUMMARY

Time Mark Every 60 S







Casing Collar Locator (CCL)		Strain Gauge Pressure (SGP)	
-19 (----) 1		0 (PSIA) 3000	
Gamma Ray (GR)		Temperature (TEMP_MWPT)	
0 (GAPI) 150		0 (DEGF) 250	
CCL From CCL to T1		Tension (TENS)	
Temperature (TEMP_MWPT) (DEGF)		0 (LBF) 2500	
		Pressure (SGP) (PSIA)	

PIP SUMMARY

Time Mark Every 60 S

Parameters		
DLIS Name	Description	Value
MWPT-CA: MEASUREMENT WHILE PERFORATING TOOL		
DEVI_FL_CORR	Deviation Angle for Flow Line Correction	0 DEG
FLD	Flow Line Density	1 G/C3
MWPT_NULL_SOURCE	MWPT NULL Temperature Source	TEMS
MWPT_NULL_TEMP	MWPT NULL Temperature	0.0 DEGC

Format: MWP Vertical Scale: 1:200 Graphics File Created: 08-Feb-2007 16:40

OP System Version: 14C0-302			
MCM			
MWP_GUN	SRC-3220-WPP-AAP5	MWPT-CA	SRC-3220-WPP-AAP5
MWGT-BA	SRC-3220-WPP-AAP5		

Output DLIS Files			
DEFAULT	PERFO_013LUP	FN:12	PRODUCER 08-Feb-2007 16:40

Company: Esso Australia Pty Ltd.

Well: A-17A

Output DLIS Files

DEFAULT

PERFO\_012LUP

FN:11

PRODUCER

08-Feb-2007 16:34

3260.1 M

3221.0 M

OP System Version: 14C0-302

MCM

MWP\_GUN

SRC-3220-WPP-AAP

MWPT-CA

SRC-3220-WPP-AAP

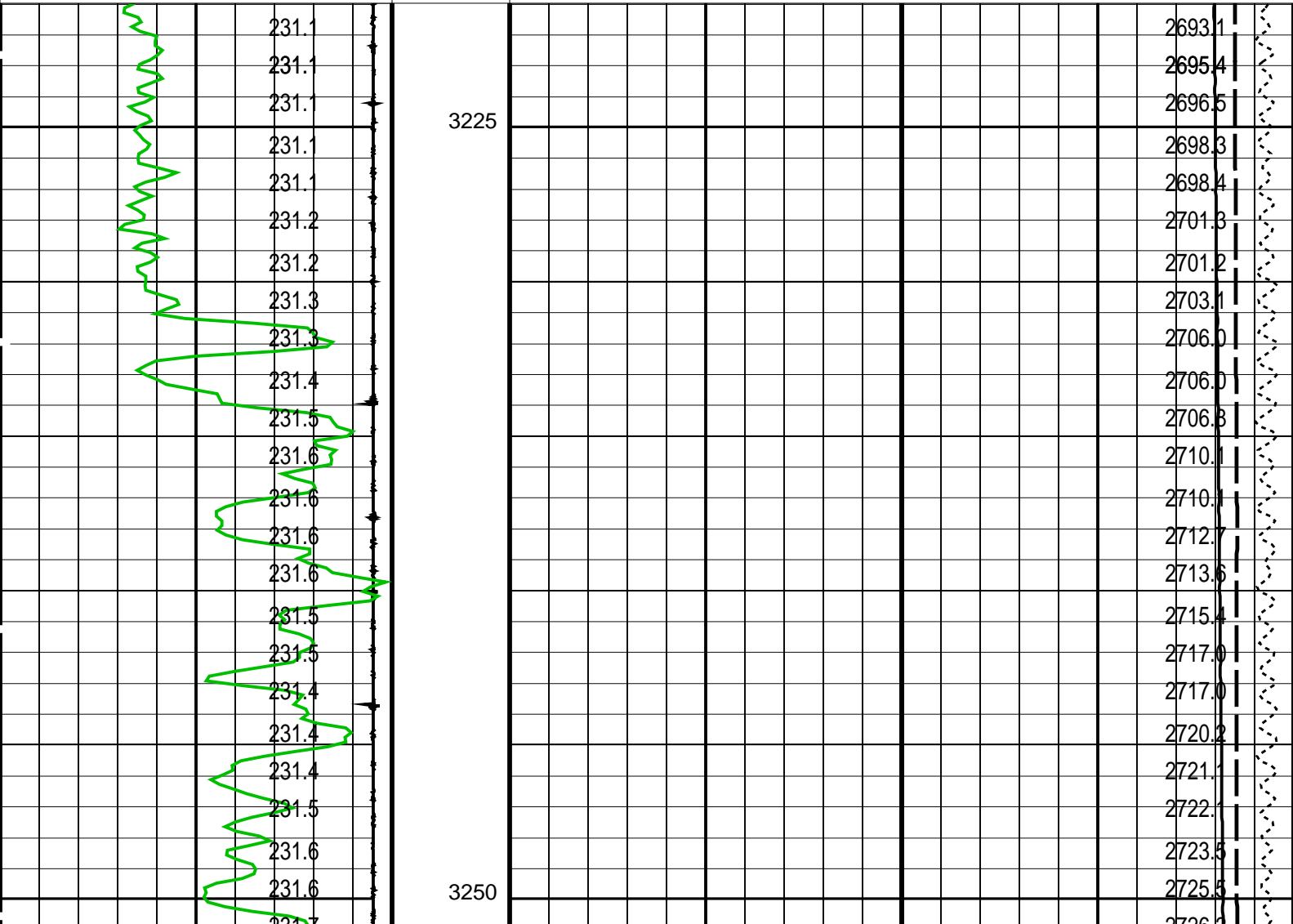
MWGT-BA

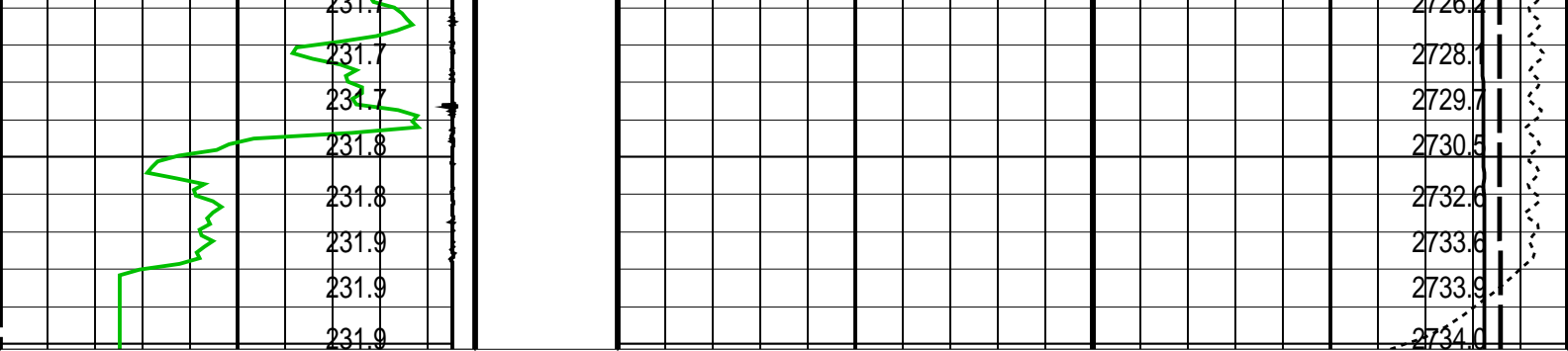
SRC-3220-WPP-AAP

PIP SUMMARY

Time Mark Every 60 S

Temperature (TEMP_MWPT) (DEGF)		Pressure (SGP) (PSIA)	
CCL From CCL to T1		Tension (TENS) (LBF)	
Gamma Ray (GR) (GAPI)		Temperature (TEMP_MWPT) (DEGF)	
Casing Collar Locator (CCL)		Strain Gauge Pressure (SGP) (PSIA)	
-19 (----) 1		0 2500	
0 150		0 250	
		0 3000	





Casing Collar Locator (CCL)		Strain Gauge Pressure (SGP)	
-19	(----) 1	0	(PSIA) 3000
Gamma Ray (GR)		Temperature (TEMP_MWPT)	
0	(GAPI) 150	0	(DEGF) 250
CCL From CCL to T1		Tension (TENS)	
Temperature (TEMP_MWPT) (DEGF)		0	(LBF) 2500
		Pressure (SGP) (PSIA)	

#### PIP SUMMARY

Time Mark Every 60 S

### Parameters

DLIS Name	Description	Value
MWPT-CA: MEASUREMENT WHILE PERFORATING TOOL		
DEVI_FL_CORR	Deviation Angle for Flow Line Correction	0 DEG
FLD	Flow Line Density	1 G/C3
MWPT_NULL_SOURCE	MWPT NULL Temperature Source	TEMS
MWPT_NULL_TEMP	MWPT NULL Temperature	0.0 DEGC

Format: MWP Vertical Scale: 1:200 Graphics File Created: 08-Feb-2007 16:34

### OP System Version: 14C0-302

MCM

MWP\_GUN SRC-3220-WPP-AAP SRC-3220-WPP-AAP MWPT-CA SRC-3220-WPP-AAP  
MWGT-BA SRC-3220-WPP-AAP

### Output DLIS Files

DEFAULT PERFO\_012LUP FN:11 PRODUCER 08-Feb-2007 16:34

Company: Esso Australia Pty Ltd.

**Schlumberger**

Well: A-17A  
Field: Flounder  
Rig : Prod4 / Ausl  
Country: Australia

2 1/2" Powerjet Spiral  
Perforation  
MWPT Record