

Company: Ezzo Australia Pty Ltd

Well: WTN W-8a

Field: Tuna

Rig: Prod 2/ISS Rig 22 Country: Australia

2" PJ Omega HSD
Perforation Record
11-Dec-06

Rig: Prod 2/ISS Rig 22
Field: Tuna
Location: Bass Strait
Well: WTN W-8a
Company: Ezzo Australia Pty Ltd

LOCATION

Bass Strait	Elev.: K.B. 34.7 m
Gippsland	G.L. -61 m
Basin	D.F. 34.7 m
Permanent Datum:	Mean Sea Level
Log Measured From:	Kelly Bushing
Drilling Measured From:	Kelly Bushing
State: Victoria	Max. Well Deviation 63 deg
	Longitude 148.3022 E
	Latitude 38.1986 S

Logging Date 11-Dec-2006

Run Number 1

Depth Driller 3507 m

Schlumberger Depth 3485 m

Bottom Log Interval 3411 m

Top Log Interval 3407.5 m

Casing Fluid Type Filtered Seawater

Salinity

Density 8.8 lbm/gal

Fluid Level 0 m

BIT/CASING/TUBING STRING

Bit Size 8.500 in

From 13 m

To 3558 m

Casing/Tubing Size 4.500 in

Weight 26 lbm/ft

Grade L-80

From 2100 m

To 3583 m

Maximum Recorded Temperatures

Logger On Bottom 13-Dec-2006 16:05

Unit Number 3827 AUSL

Recorded By C.Rowand/ A. Sword

Witnessed By Mr.Bruce Woodward, Mr.Mark Wilson

	Run 1	Run 2	F
Oil Density			
Water Salinity			
Gas Gravity			
Bo			
Bw			
1/Bg			
Bubble Point Pressure			
Bubble Point Temperature			
Solution GOR			
Maximum Deviation	63 deg		
CEMENTING DATA			
Primary/Squeeze	Primary		
Casing String No			
Lead Cement Type			
Volume			
Density			
Water Loss			
Additives			
Tail Cement Type			
Volume			
Density			
Water Loss			
Additives			
Expected Cement Top			
Logging Date			
Run Number			
Depth Driller			
Schlumberger Depth			
Bottom Log Interval			
Top Log Interval			
Casing Fluid Type			
Salinity			
Density			
Fluid Level			
BIT/CASING/TUBING STRING			
Bit Size			
From			
To			
Casing/Tubing Size			
Weight			
Grade			
From			
To			
Maximum Recorded Temperatures			
Logger On Bottom			
Unit Number			
Recorded By			
Witnessed By			

Run 4

Date Created: 7-JAN-2007 12:14:36

Logging Cable

Type:	2-32ZT
Serial Number:	-999
Length:	6249.01 M
Conveyance Method:	Wireline
Rig Type:	Offshore Fixed

-3.80 M

1. Schlumberger depth control policy followed
- 2.
- 3.
- 4.
- 5.
- 6.

OS1:
OS2:
OS3:
OS4:
OS5:

REMARKS: RUN NUMBER 2

Objectice: to perforate the T1 sand

Run #1: Gun #1 +ve, 3407.5–3411m.

Gun fired utilising the SAFE system

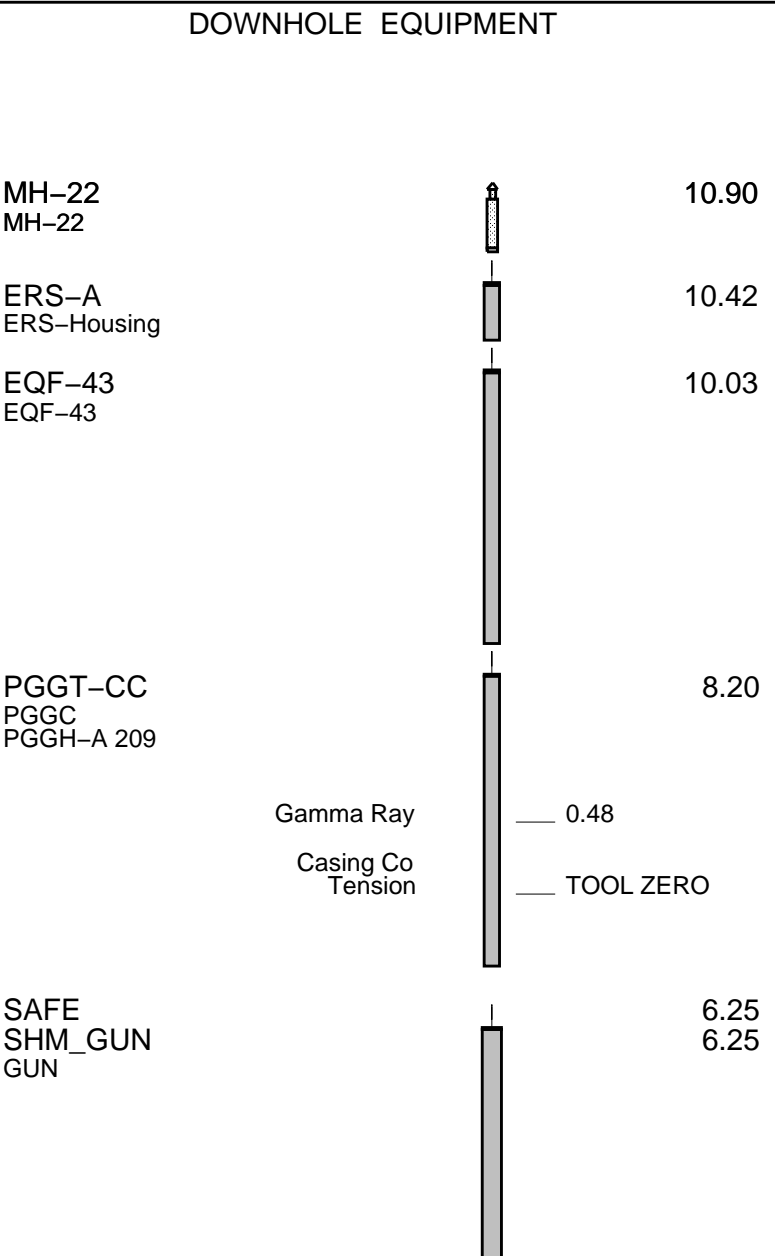
CCL to Top Shot = 2.75m
CCL stop depth = 3404.75mMDKB

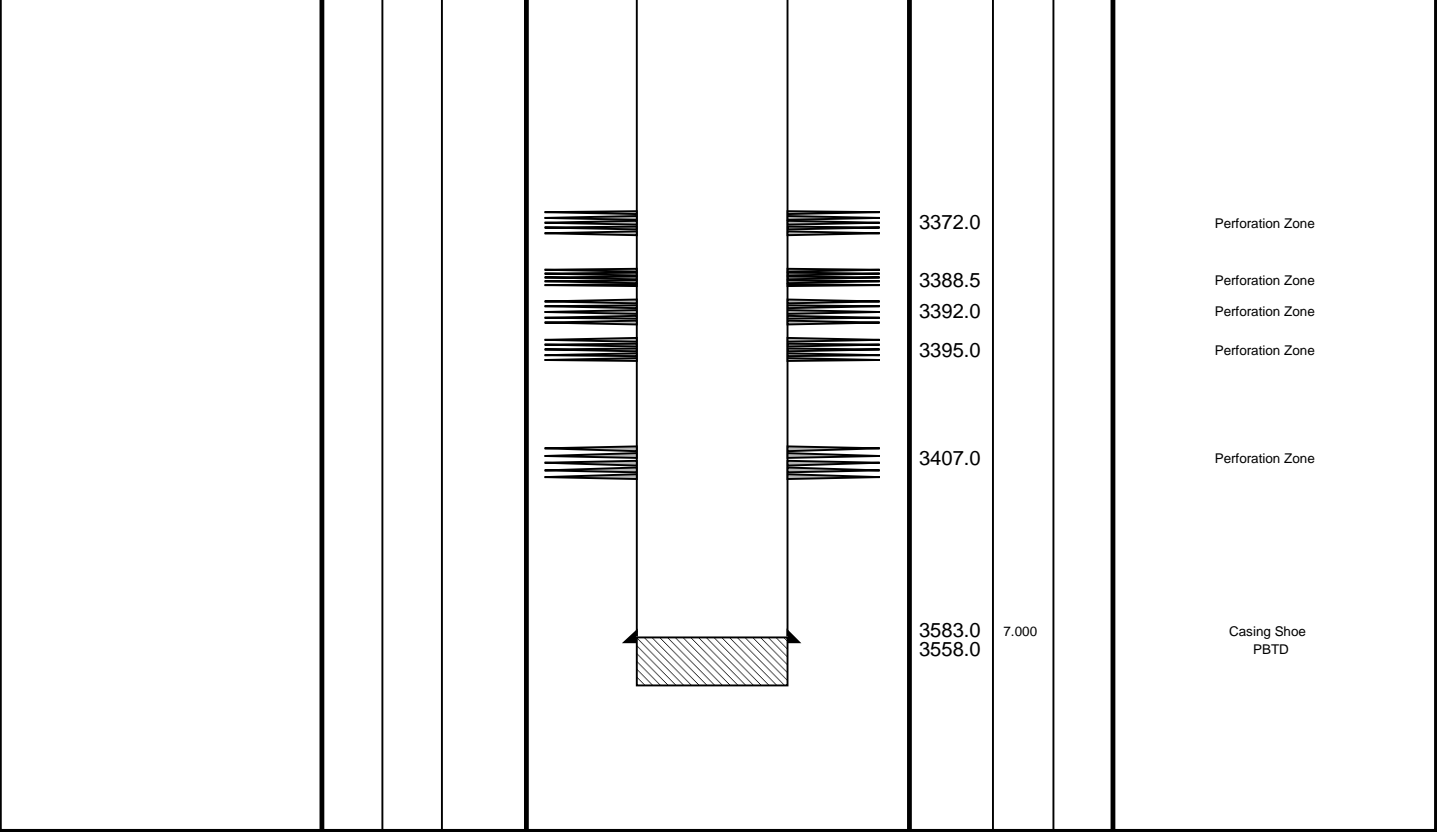
Schlumberger Crew:
Days: D Stuckey(crew cheif), S Kiss
Nights: B Flynn, G Brady.

RUN 1			RUN 2		
SERVICE ORDER #: 40000463			SERVICE ORDER #:		
PROGRAM VERSION: 14C0-302			PROGRAM VERSION:		
FLUID LEVEL: 0 m			FLUID LEVEL:		
LOGGED INTERVAL	START	STOP	LOGGED INTERVAL	START	STOP

EQUIPMENT DESCRIPTION					
RUN 1			RUN 2		

SURFACE EQUIPMENT
WITM (SHM)





2" HSD Shoot Pass

MAXIS Field Log

PERFO2 Operational Summary Listing

Device	Status	Req Depth (M)	Obs Depth (M)	Time Used
GUN1	Used	3407.5	3407.5	Wed Dec 13 17:14:07 2006

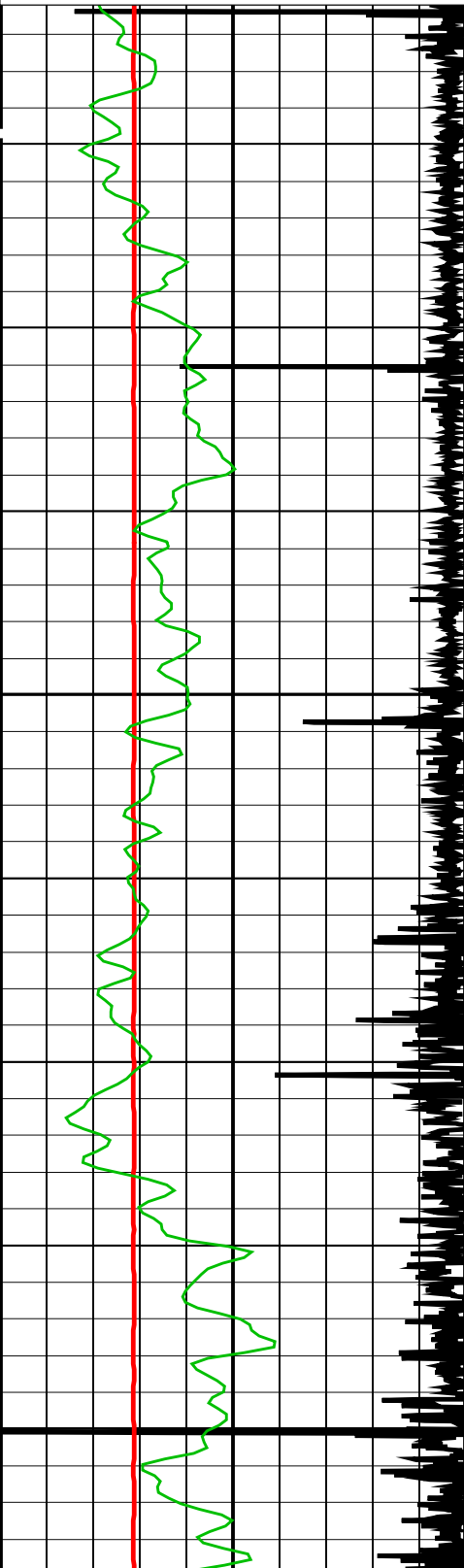
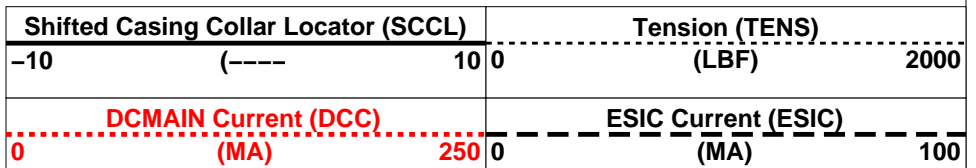
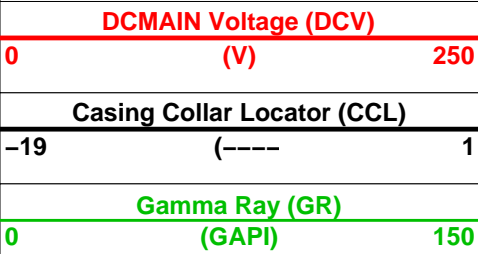
SHM_GUN 14C0-302
PGGT-CC 14C0-302

SAFE
ERS-A

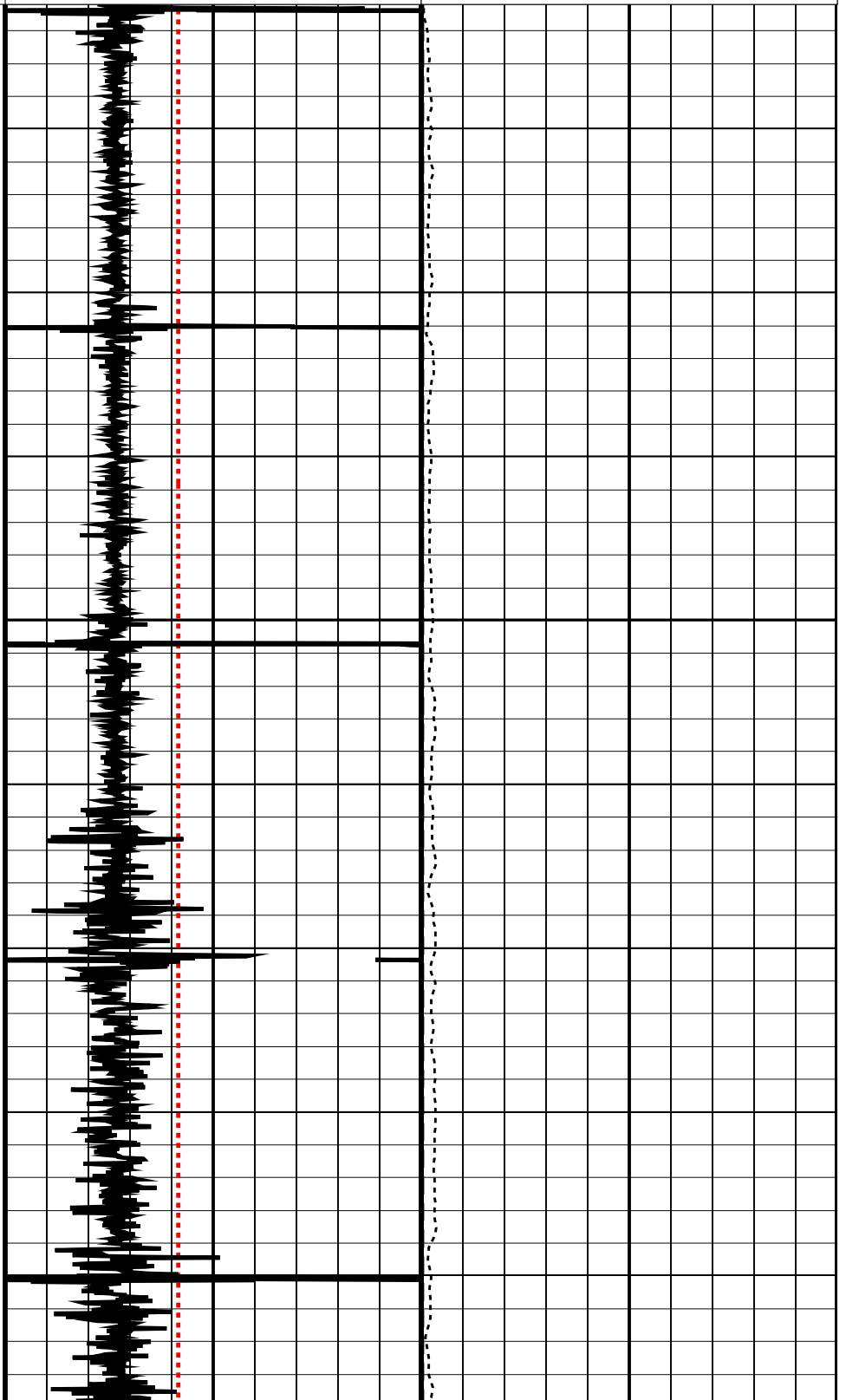
14C0-302
14C0-302

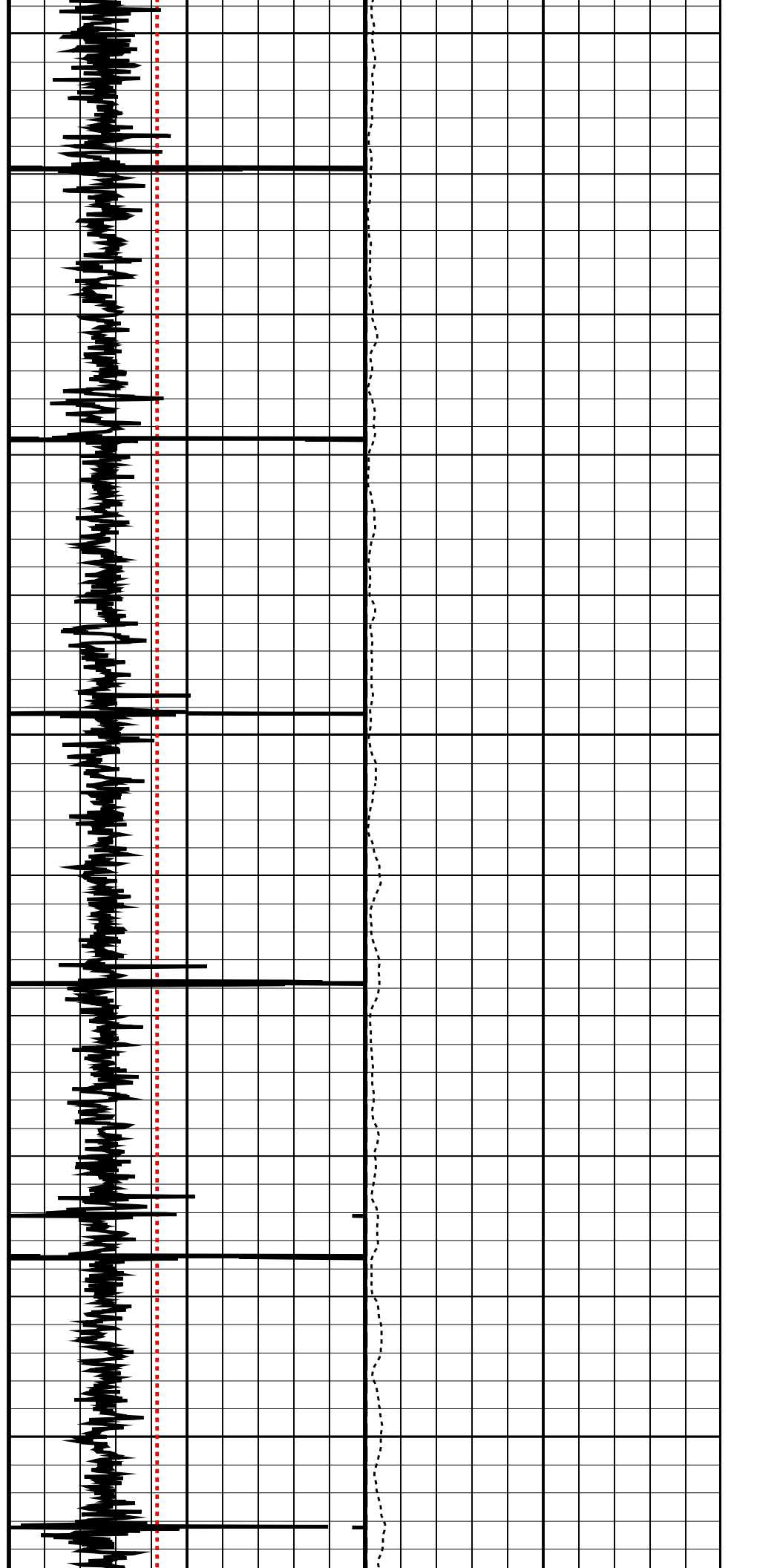
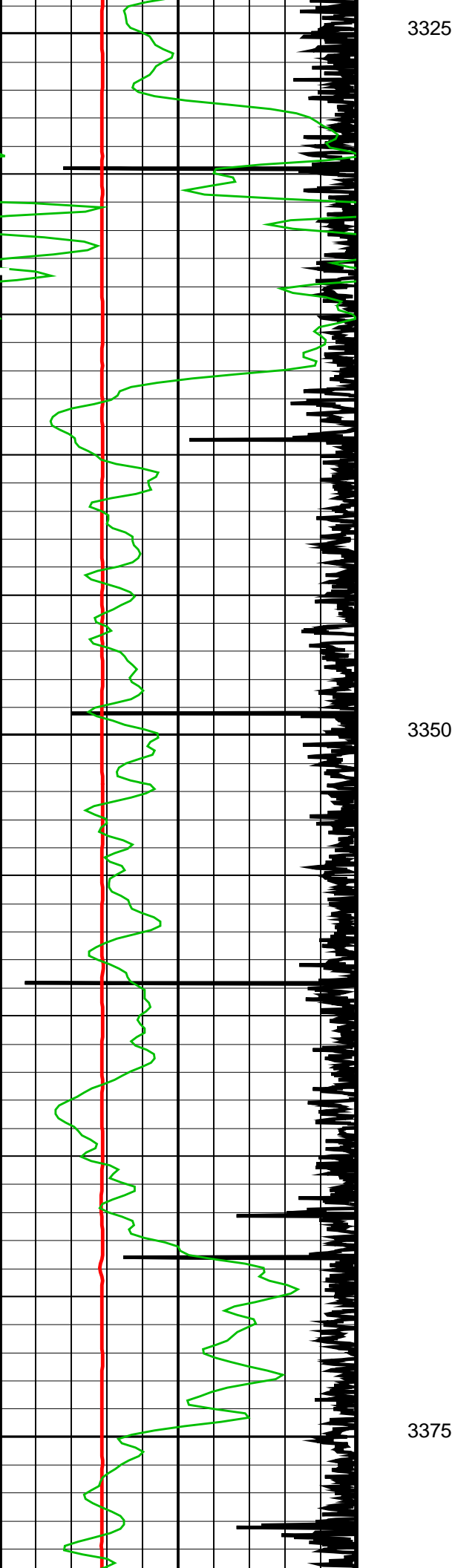
PIP SUMMARY

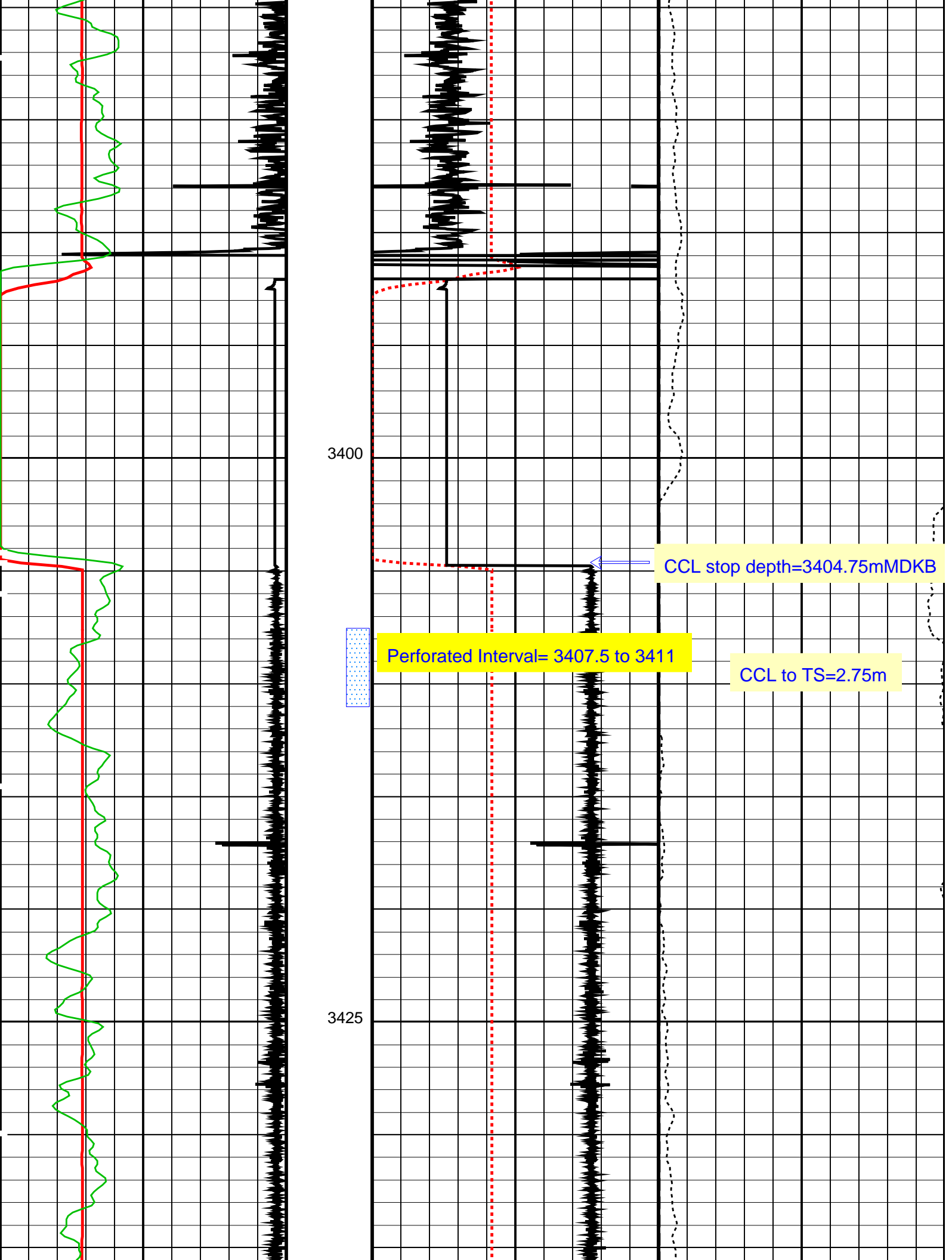
Time Mark Every 60 S

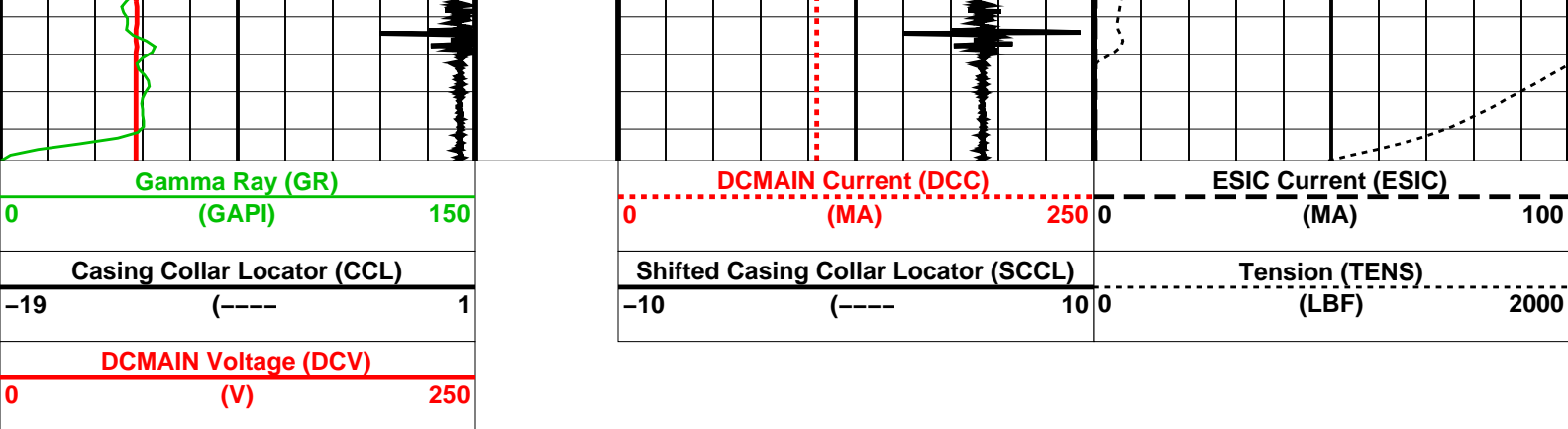


3300










PIP SUMMARY

Time Mark Every 60 S

Parameters			
DLIS Name	Description		Value
SAFE: SAFE DETONATING SYSTEM			
ESDT	ESIC Shot Depth Temperature		50 DEGC
Format: PERFO	Vertical Scale: 1:200	Graphics File Created: 13-Dec-2006 17:04	

OP System Version: 14C0-302			
MCM			
SHM_GUN	14C0-302	SAFE	14C0-302
PGGT-CC	14C0-302	ERS-A	14C0-302

Output DLIS Files			
DEFAULT	PERFO_052LUP	FN:61 PRODUCER	13-Dec-2006 17:04



Correlation Pass

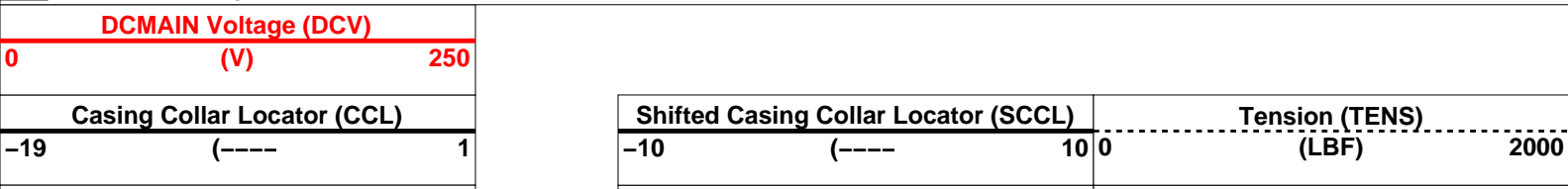
MAXIS Field Log

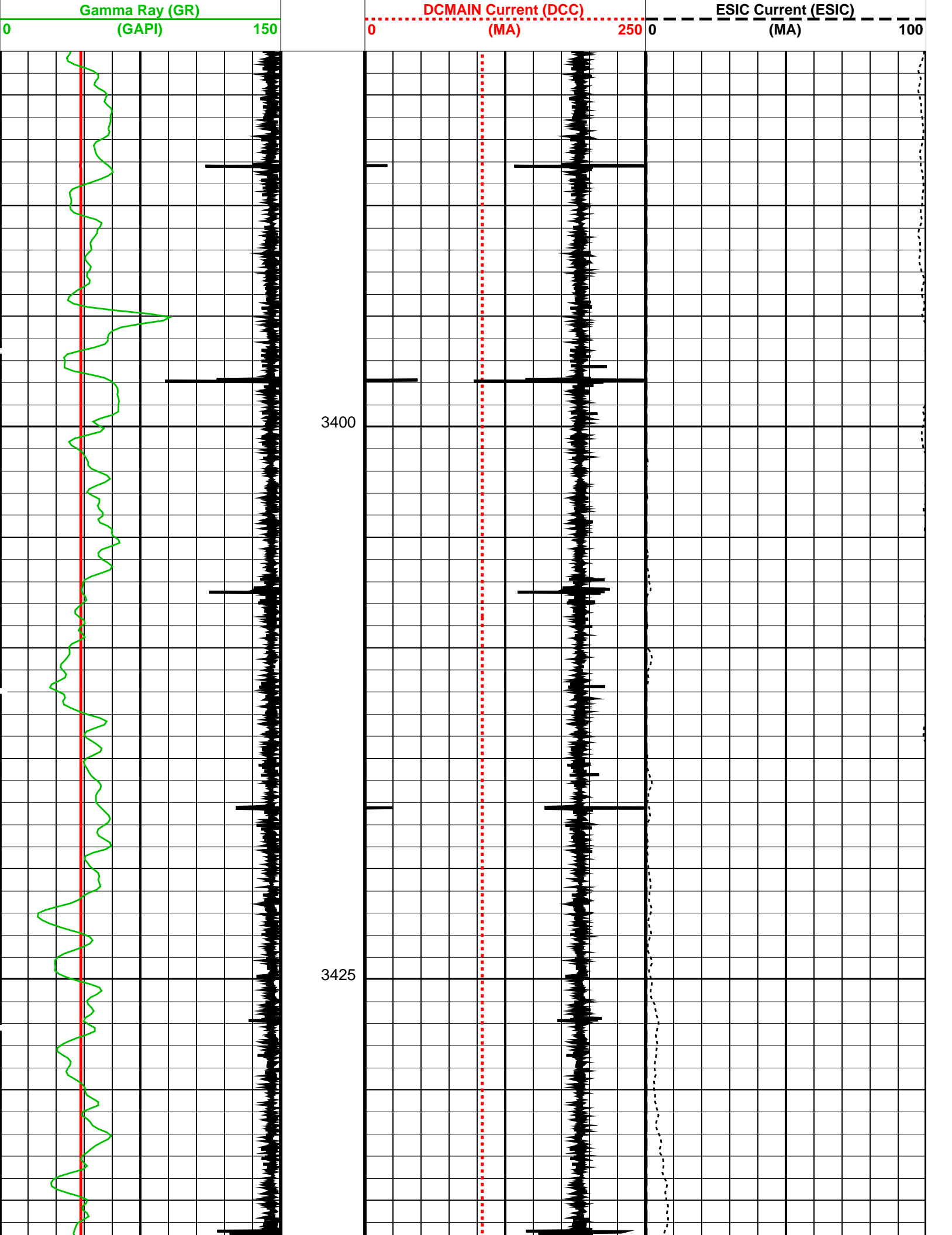
Company: Esso Australia Pty Ltd Well: WTN W-8a

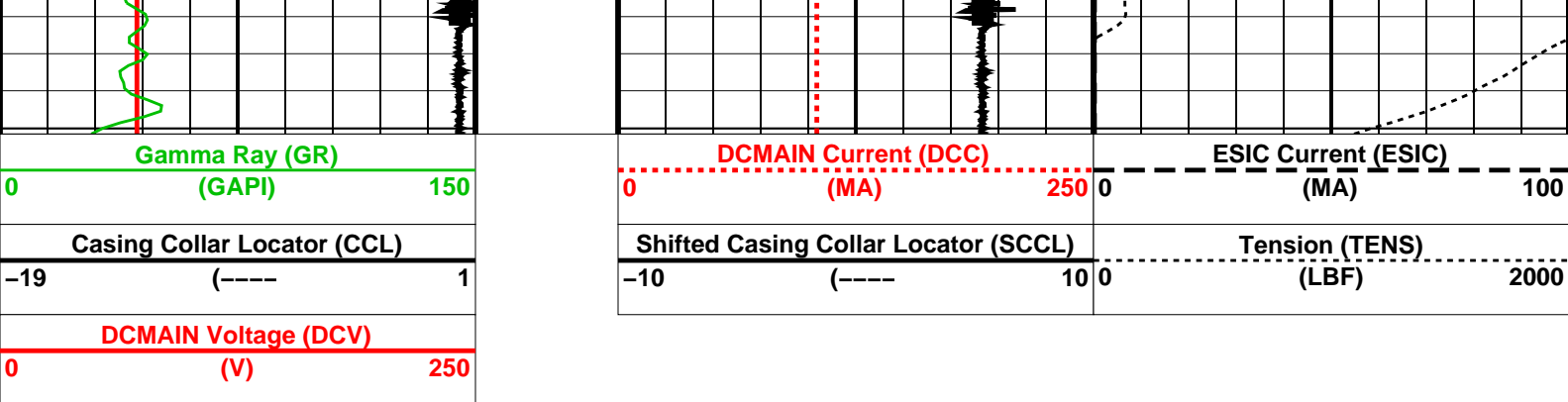
Output DLIS Files					
DEFAULT	PERFO_049LUP	FN:58 PRODUCER	13-Dec-2006 16:46	3440.1 M	3383.0 M
OP System Version: 14C0-302					
MCM					
SHM_GUN	14C0-302	SAFE	14C0-302		
PGGT-CC	14C0-302	ERS-A	14C0-302		

PIP SUMMARY

Time Mark Every 60 S







PIP SUMMARY

Time Mark Every 60 S

Parameters

DLIS Name	Description	Value
SAFE: SAFE DETONATING SYSTEM		
ESDT	ESIC Shot Depth Temperature	50 DEGC
Format: PERFO	Vertical Scale: 1:200	Graphics File Created: 13-Dec-2006 16:46

OP System Version: 14C0-302

MCM

SHM_GUN	14C0-302	SAFE	14C0-302
PGGT-CC	14C0-302	ERS-A	14C0-302

Output DLIS Files

DEFAULT	PERFO_049LUP	FN:58	PRODUCER	13-Dec-2006 16:46
---------	--------------	-------	----------	-------------------

Company: **Esso Australia Pty Ltd**

Schlumberger

Well: **WTN W-8a**

Field: **Tuna**

Rig: **Prod 2/ISS Rig 22**

Country: **Australia**

2" PJ Omega HSD
Perforation Record
11-Dec-06