

Company: Esso Australia Pty Ltd.

Well: HLA A24a

Field: Halibut

Rig: 453

Country: Australia

453

Rig: 453

Field: Halibut

Location: Bass Strait

Well: HLA A24a

Company: Esso Australia Pty Ltd.

MXAR Gun Hanger 4-1/2" HSD
Setting Record
17-Feb-2007

LOCATION

Bass Strait

Gippsland Basin

Halibut

Permanent Datum: _____

Log Measured From: _____

Drilling Measured From: _____

Elev.: K.B. 29.47 m

G.L. -72.5 m

D.F. 29.47 m

Mean Sea Level _____

Drill Floor _____

Rotary Table _____

Elev.: 0 m

29.5 m above Perm. Datum

State: Victoria

Max. Well Deviation 38 deg

Longitude E 148 19' 13.173"

Latitude S 38 24' 15.111"

Logging Date		17-Feb-2007	
Run Number	1		
Depth Driller	2986 m		
Schlumberger Depth	2930 m		
Bottom Log Interval	2802 m		
Top Log Interval	2798.5 m		
Casing Fluid Type	Inhited Seawater		
Salinity			
Density	8.55 g/cm3		
Fluid Level	0 m		
BIT/CASING/TUBING STRING			
Bit Size	8.500 in		
From	700 m		
To	2986 m		
Casing/Tubing Size	7.000 in		
Weight	26 lbn/ft		
Grade			
From	0 m		
To	2985 m		
Maximum Recorded Temperatures			
Logger On Bottom	17-Feb-2006	18:15	
Unit Number	41	AUSL	
Recorded By	Chris Rowand		
Witnessed By	Mr G. Smith / Mr D. Bareswill		

PVT DATA			
Oil Density	Run 1	Run 2	Run 3
Water Salinity			
Gas Gravity			
Bo			
Bw			
1/Bg			
Bubble Point Pressure			
Bubble Point Temperature			
Solution GOR			
Maximum Deviation	38 deg		
CEMENTING DATA			
Primary/Squeeze	Primary		
Casing String No			
Lead Cement Type			
Volume			
Density			
Water Loss			
Additives			
Tail Cement Type			
Volume			
Density			
Water Loss			
Additives			
Expected Cement Top			
Logging Date			
Run Number			
Depth Driller			
Schlumberger Depth			
Bottom Log Interval			
Top Log Interval			
Casing Fluid Type			
Salinity			
Density			
Fluid Level			
BIT/CASING/TUBING STRING			
Bit Size			
From			
To			
Casing/Tubing Size			
Weight			
Grade			
From			
To			
Maximum Recorded Temperatures			
Logger On Bottom	Time		
Unit Number	Location		
Recorded By			
Witnessed By			

DEPTH SUMMARY LISTING

Date Created: 18-DEC-2006 21:45:17

Depth System Equipment

Depth Measuring Device		Tension Device		Logging Cable	
Type:	IDW-H	Type:	CMTD-B/A	Type:	7-46V-XS
Serial Number:	796	Serial Number:	1721	Serial Number:	76075
Calibration Date:	06-Sep-2006	Calibration Date:	21-Dec-2006	Length:	5999.07 M
Calibrator Serial Number:	1009	Calibrator Serial Number:	1051	Conveyance Method: Wireline Rig Type: Offshore_Fixed	
Calibration Cable Type:	7-46V-XS	Calibration Gain:	0.95		
Wheel Correction 1:	-3	Calibration Offset:	524.00		
Wheel Correction 2:	-2				

Depth Control Parameters

Log Sequence:	Subsequent Trip To the Well
Reference Log Name:	Esso Composite Correlation Log
Reference Log Run Number:	.
Reference Log Date:	Not provided
Subsequent Trip Down Log Correction:	

Depth Control Remarks

1. Correlated to Esso Composite Correlation Log provided by client.
2. Used IDW as primary depth control
3. Used Z-chart as secondary depth control
4.
5.
6.

DISCLAIMER

THE USE OF AND RELIANCE UPON THIS RECORDED-DATA BY THE HEREIN NAMED COMPANY (AND ANY OF ITS AFFILIATES, PARTNERS, REPRESENTATIVES, AGENTS, CONSULTANTS AND EMPLOYEES) IS SUBJECT TO THE TERMS AND CONDITIONS AGREED UPON BETWEEN SCHLUMBERGER AND THE COMPANY, INCLUDING: (a) RESTRICTIONS ON USE OF THE RECORDED-DATA; (b) DISCLAIMERS AND WAIVERS OF WARRANTIES AND REPRESENTATIONS REGARDING COMPANY'S USE OF AND RELIANCE UPON THE RECORDED-DATA; AND (c) CUSTOMER'S FULL AND SOLE RESPONSIBILITY FOR ANY INFERENCE DRAWN OR DECISION MADE IN CONNECTION WITH THE USE OF THIS RECORDED-DATA.

OTHER SERVICES1	OTHER SERVICES2
OS1: JB	OS1:
OS2:	OS2:
OS3:	OS3:
OS4:	OS4:
OS5:	OS5:

REMARKS: RUN NUMBER 1	REMARKS: RUN NUMBER 2
Log correlated to Esso Composite Correlation Log provided by the client.	
Objective: Rig up wireline, make up junk basket toolstring with PGGT-D and 6" gauge ring, RIH to HUD to ensure that the perforation interval can be reached.	
POOH with junk basket, made up MXAR Gun Hanger and a 4 1/2" HSD gun with powerjet omega charges and RIH, correlate to the client provided reference log, set MXAR gun hanger so that the HSD guns perforate the interval 2798.5m to 2802.0m MDKB, POOH, rig down.	
Tagged HUD with Junk Basket @ 2930 MDKB.	

CCL to Top Shot = 11.42 M

Schlumberger Crew:

Operators = P. Flood & N. Simmons (Days)










= K.Kerr & S.Bradbury (Nights)

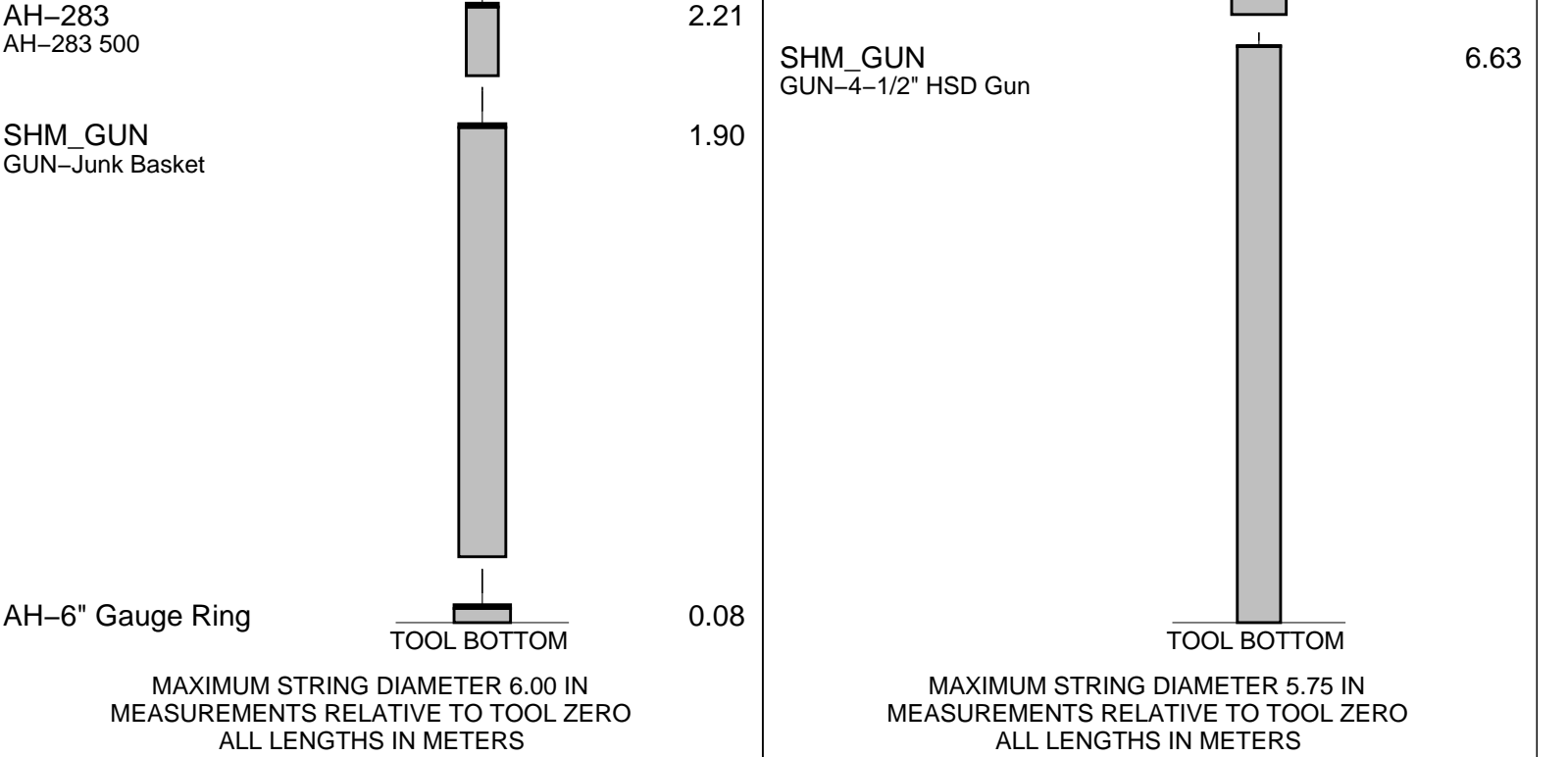
Specialist = C.Rowand (Wireline) R.Blok & M.Williams (TCP)

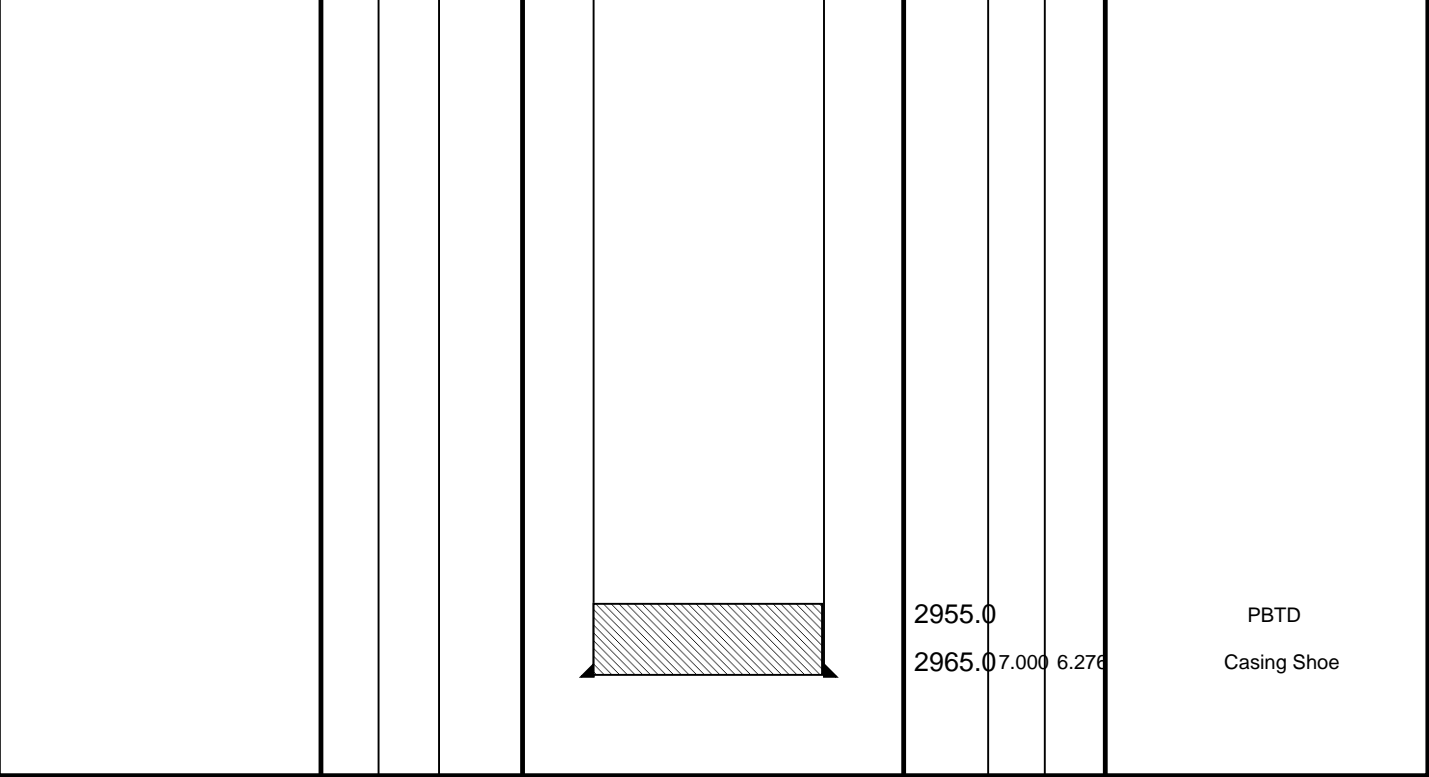
RUN 1 SERVICE ORDER #: L0501G207 PROGRAM VERSION: 14C0-302 FLUID LEVEL: 0 m			RUN 2 SERVICE ORDER #: PROGRAM VERSION: FLUID LEVEL:		
LOGGED INTERVAL	START	STOP	LOGGED INTERVAL	START	STOP

[illegible]

RUN 1		RUN 2	
WITM (SHM)	SURFACE EQUIPMENT	WITM (SHM)	SURFACE EQUIPMENT

DOWNHOLE EQUIPMENT				DOWNHOLE EQUIPMENT			
PEH-A PEH-A 1		4.95		PEH-A PEH-A 1		17.90	
AH-64 AH-64 9802		4.40		AH-64 AH-64 9802		17.35	
PGGT-D PGGC 227 PGGH-D 227		3.99	Gamma Ray CCL Casin Tension	PGGT-D PGGC 227 PGGH-D 227		16.95	1.07 TOOL ZERO
				AH-283		15.16	
				AH-CPST-AA AH-CPST-AA		14.86	
				AH-MXAR AH-MXAR		12.37	





2955.0
2965.0 7.000 6.276

PBTD
Casing Shoe

Schlumberger

**MXAR Gun Hanger
Setting Record**

MAXIS Field Log

PERFO2 Operational Summary Listing

Device	Status	Req Depth (M)	Obs Depth (M)	Time Used
MXAR	Used	2798.5	2798.5	Mon Dec 18 22:52:39 2006

Company: Esso Australia Pty Ltd. Well: HLA A24a

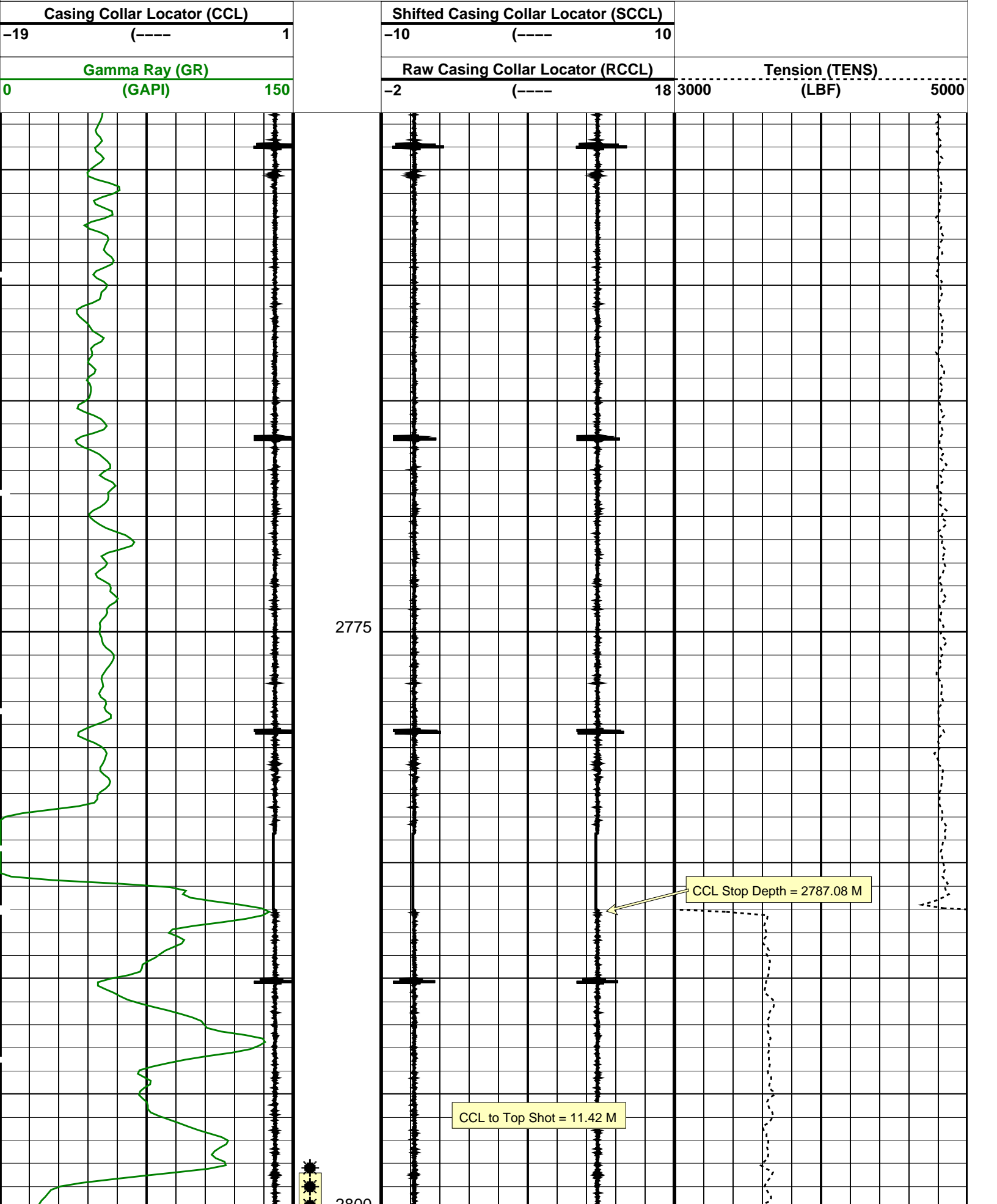
Output DLIS Files

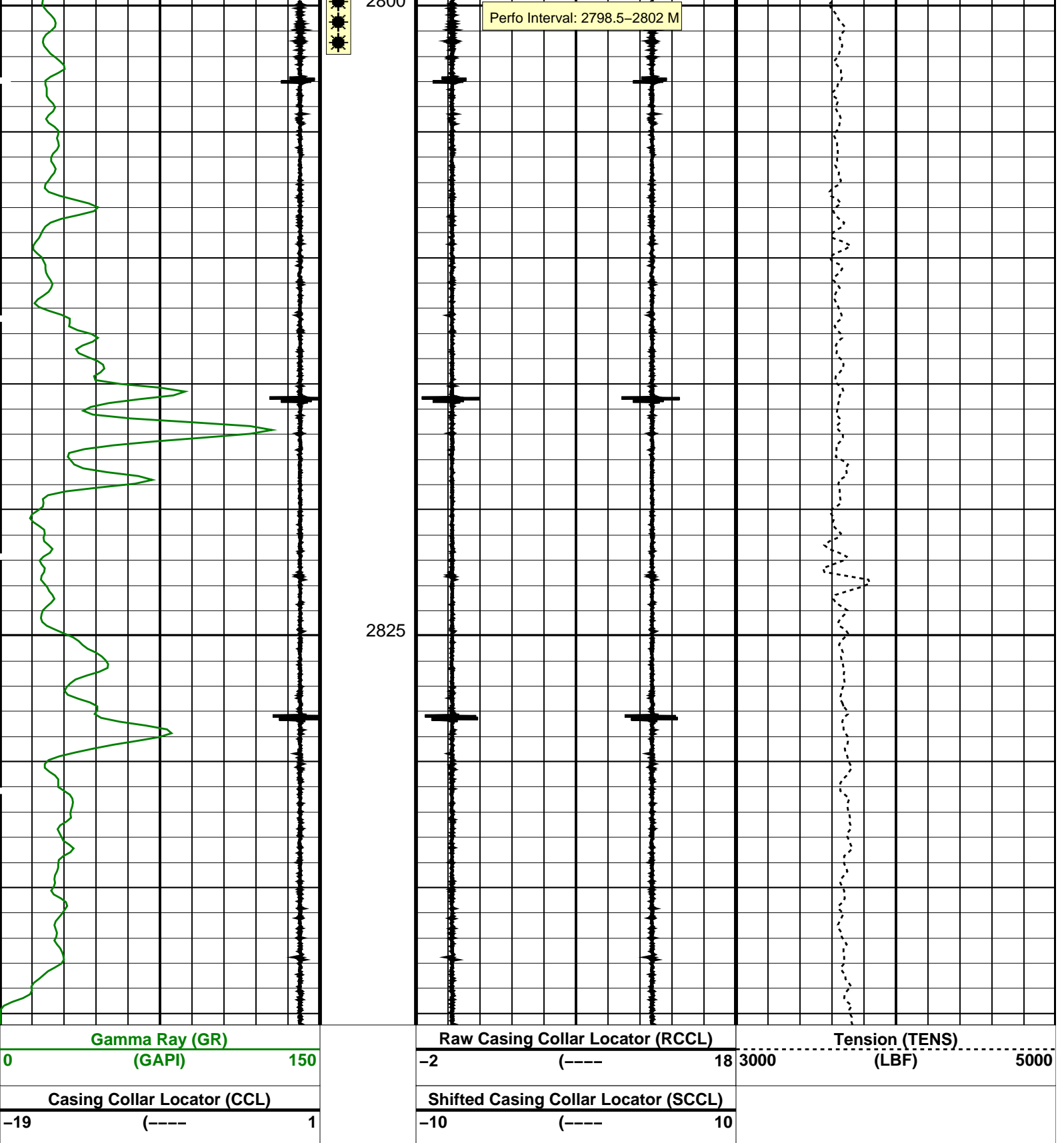
DEFAULT PERFO_010LUP FN:11 PRODUCER 18-Dec-2006 22:42

OP System Version: 14C0-302
MCM

PIP SUMMARY

Time Mark Every 60 S





PIP SUMMARY

Time Mark Every 60 S

Format: CORRELATION Vertical Scale: 1:200

Graphics File Created: 18-Dec-2006 22:42

OP System Version: 14C0-302
MCM

SHM_GUN

14C0-302

PGGT-D

14C0-302

Output DLIS Files

DEFAULT

PERFO_010LUP

FN:11

PRODUCER

18-Dec-2006 22:42

MXAR Gun Hanger
Correlation Log

MAXIS Field Log

Company: Esso Australia Pty Ltd.

Well: HLA A24a

Output DLIS Files

DEFAULT PERFO_009LUP FN:10 PRODUCER 18-Dec-2006 22:29 2839.4 M 2772.5 M

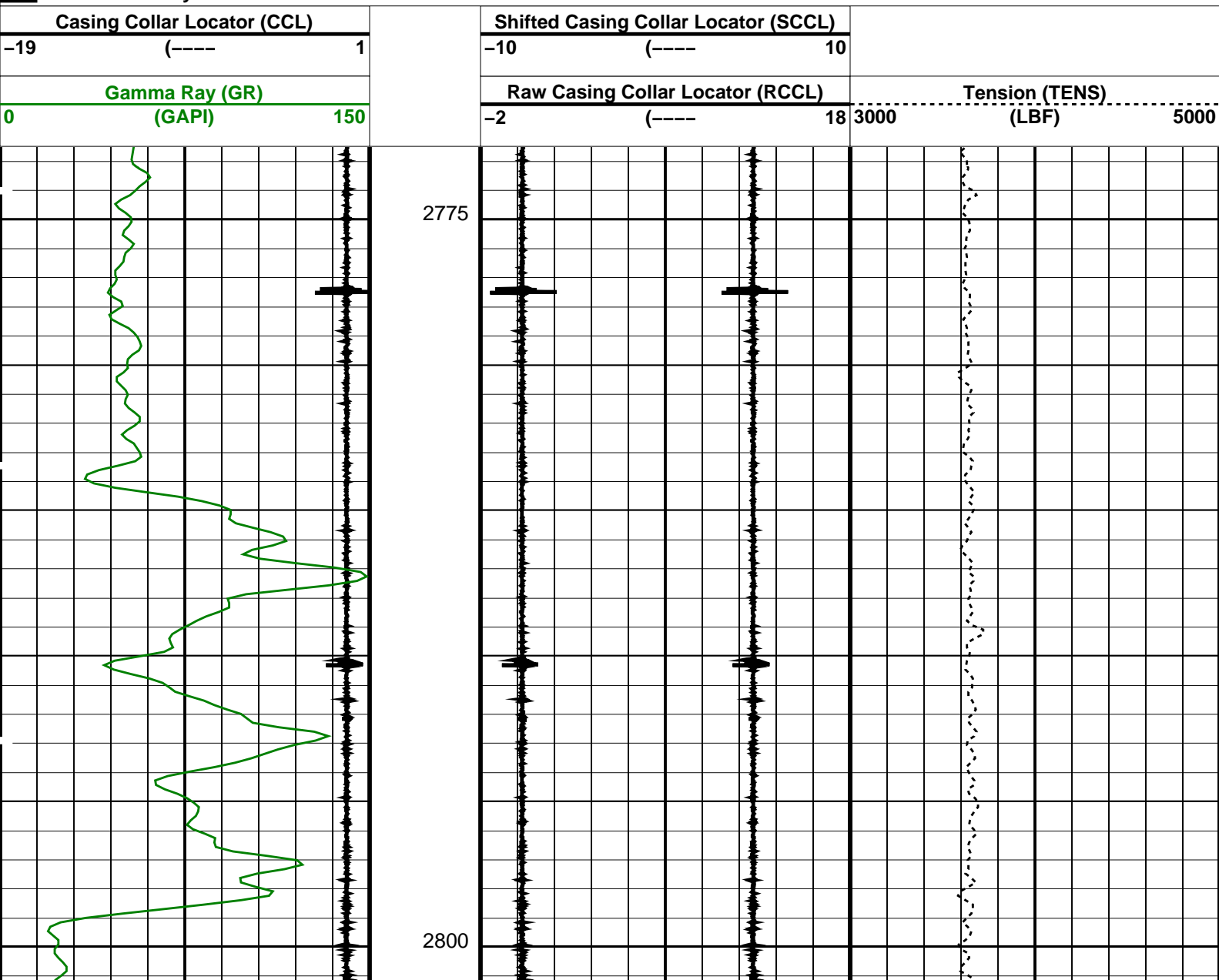
OP System Version: 14C0-302

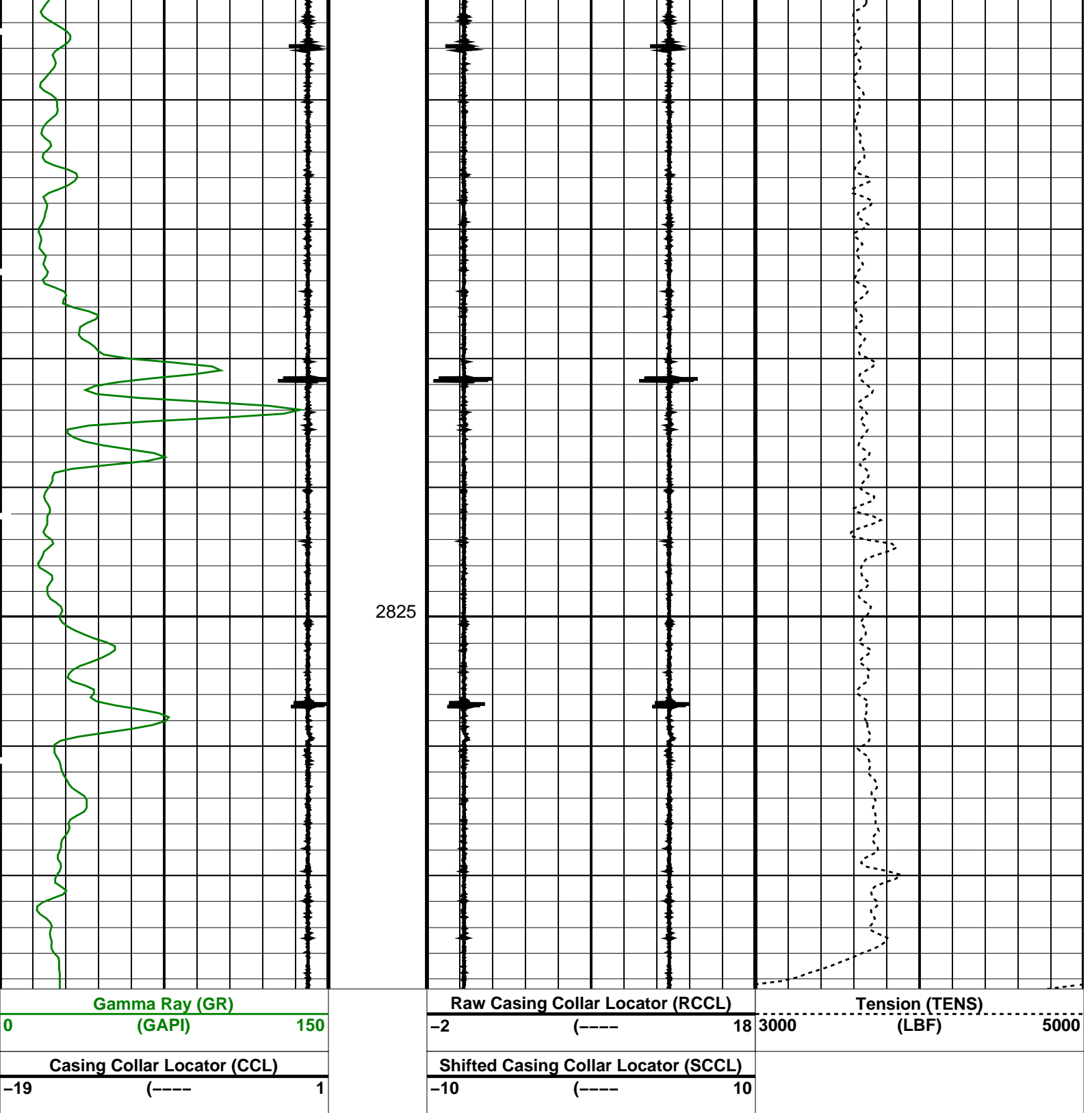
MCM

SHM_GUN 14C0-302 PGGT-D 14C0-302

PIP SUMMARY

Time Mark Every 60 S





PIP SUMMARY				
Time Mark Every 60 S				
Format: CORRELATION		Vertical Scale: 1:200		Graphics File Created: 18-Dec-2006 22:29
OP System Version: 14C0-302				
MCM				
SHM_GUN	14C0-302	PGGT-D	14C0-302	
Output DLIS Files				
DEFAULT	PERFO_009LUP	FN:10	PRODUCER	18-Dec-2006 22:29

Company: Esso Australia Pty Ltd.

Well: HLA A24a

Input DLIS Files

DEFAULT	PERFO_006LUP	FN:5	PRODUCER	18-Dec-2006 18:19	2945.3 M	2666.1 M
---------	--------------	------	----------	-------------------	----------	----------

Output DLIS Files

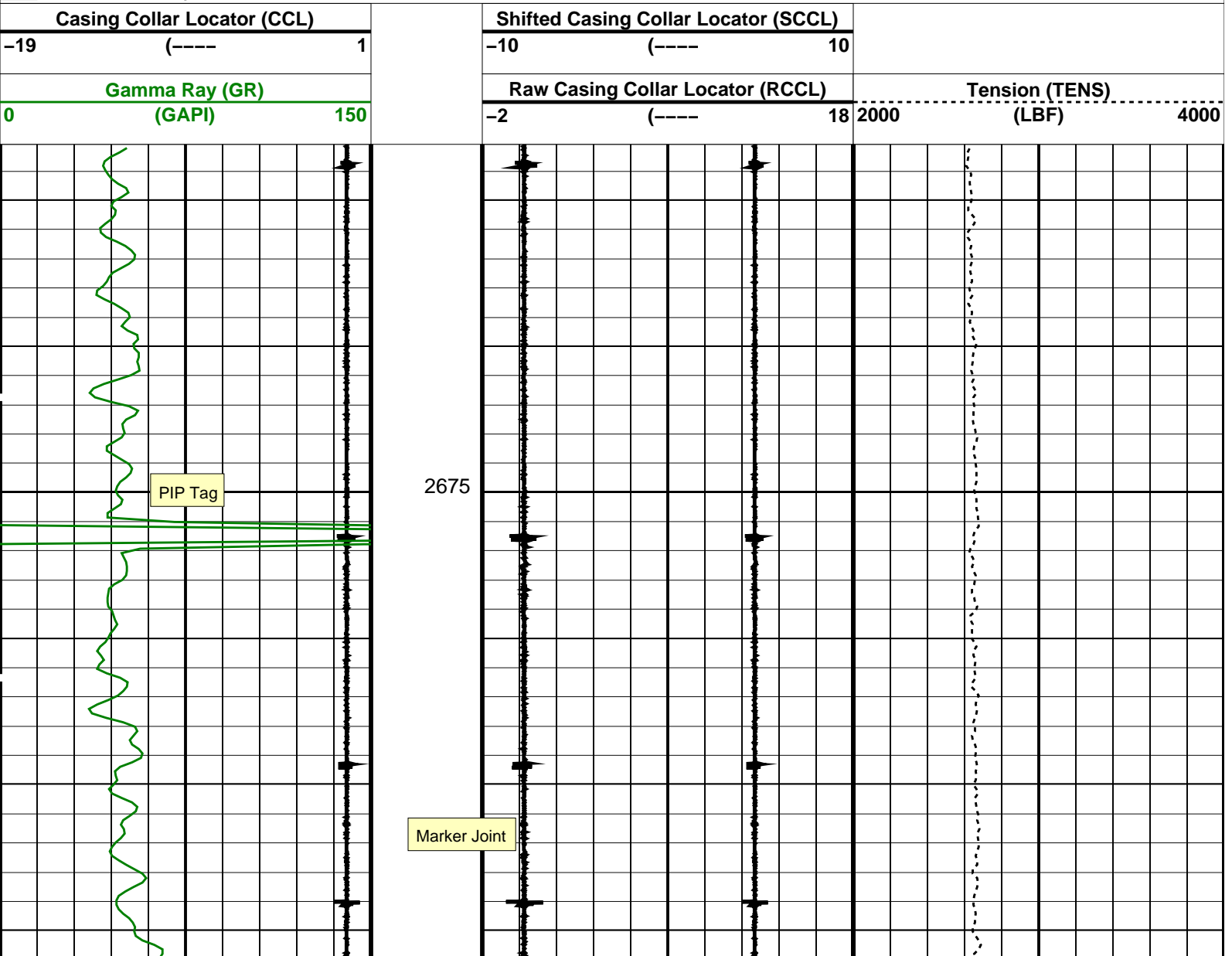
DEFAULT	PERFO_006PUP	FN:7	PRODUCER	18-Dec-2006 19:43	2941.8 M	2663.0 M
---------	--------------	------	----------	-------------------	----------	----------

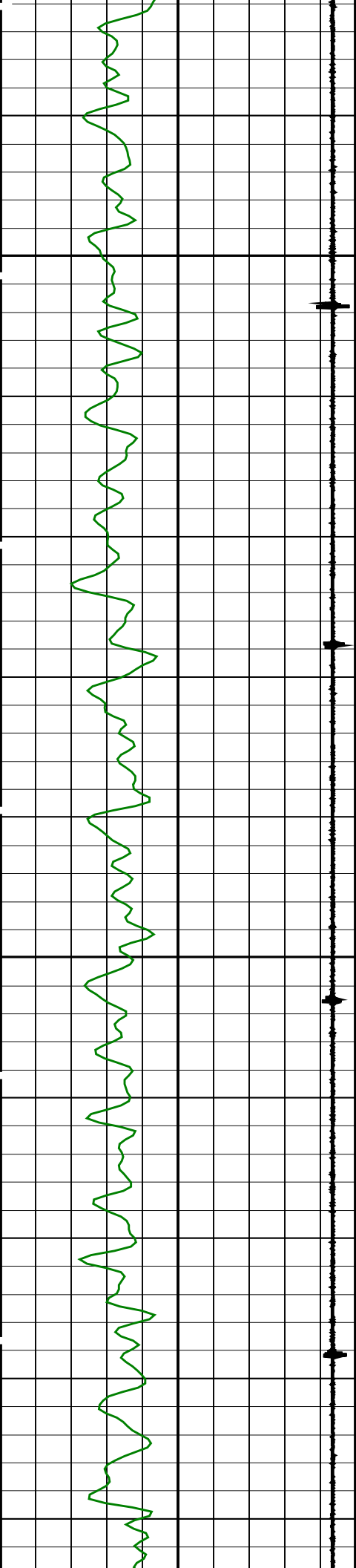
OP System Version: 14C0-302

MCM

SHM_GUN	14C0-302	PGGT-D	14C0-302
---------	----------	--------	----------

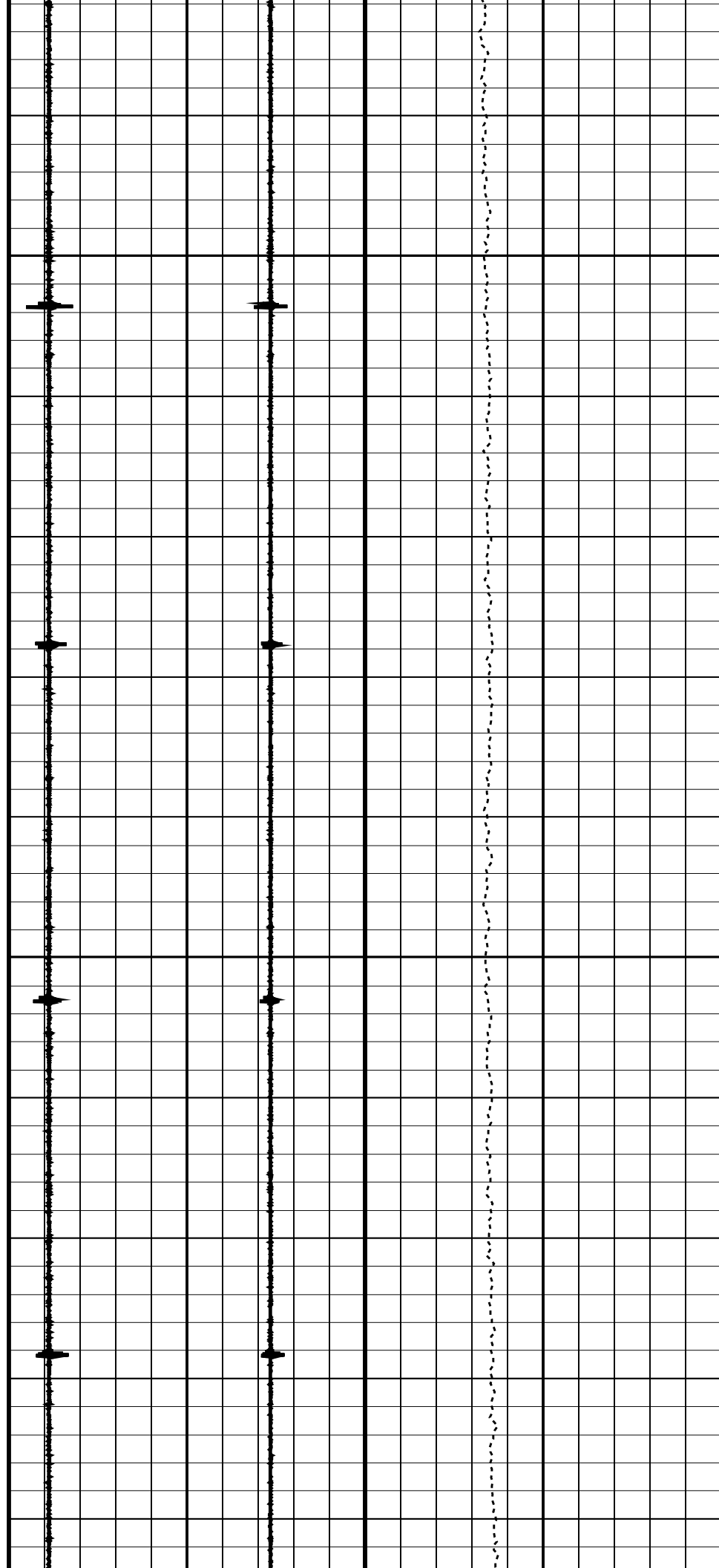
PIP SUMMARY

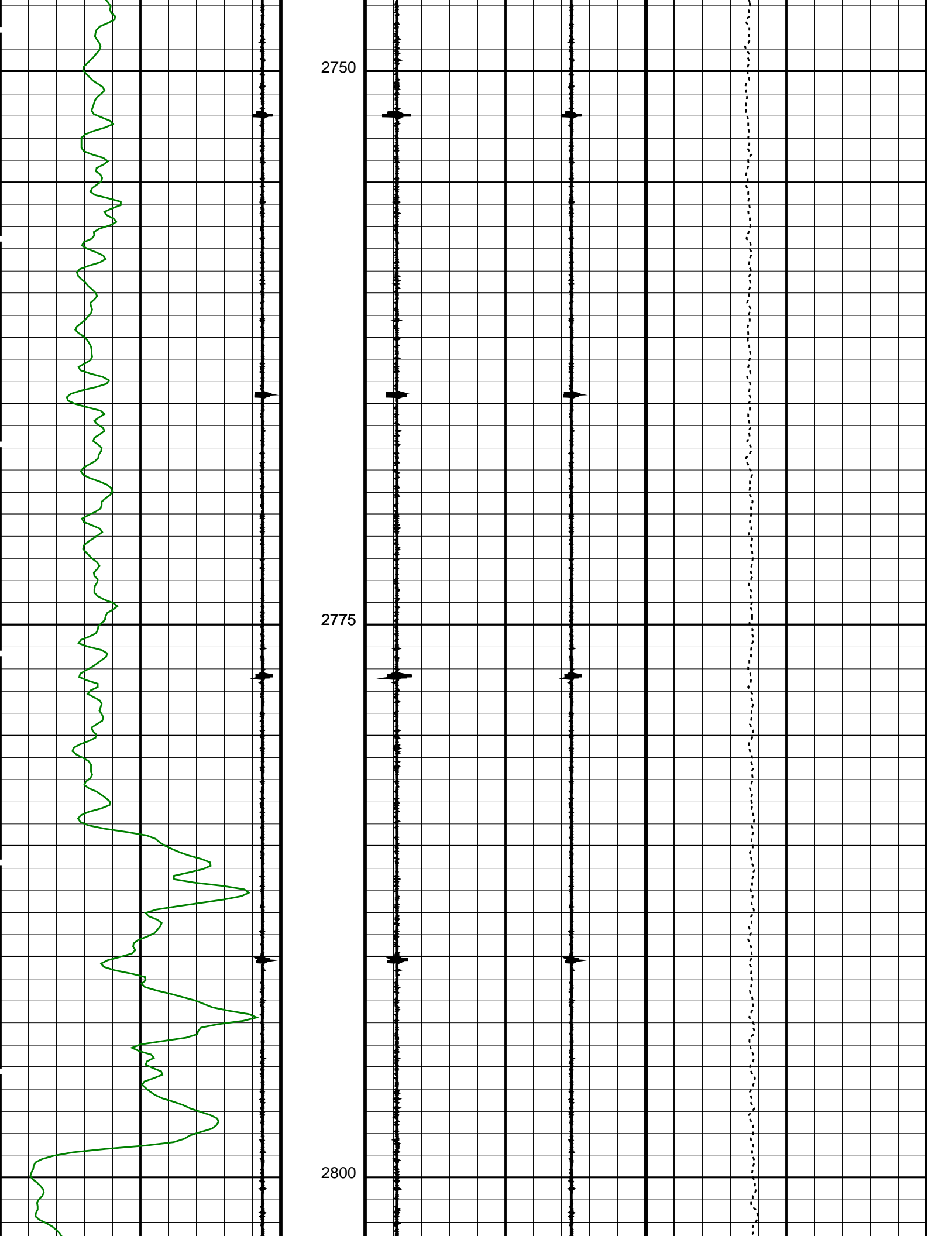
☒ Time Mark Every 60 S

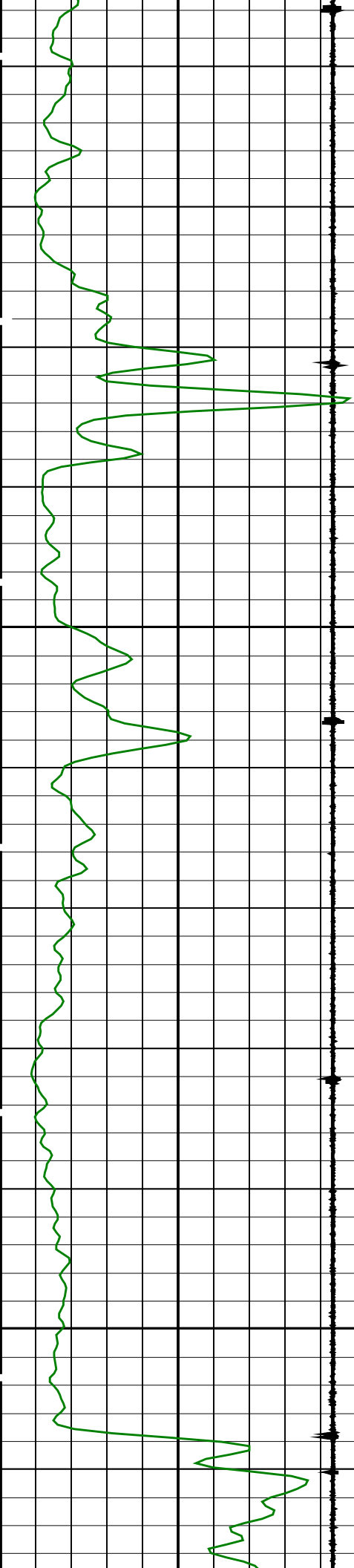


2700

2725

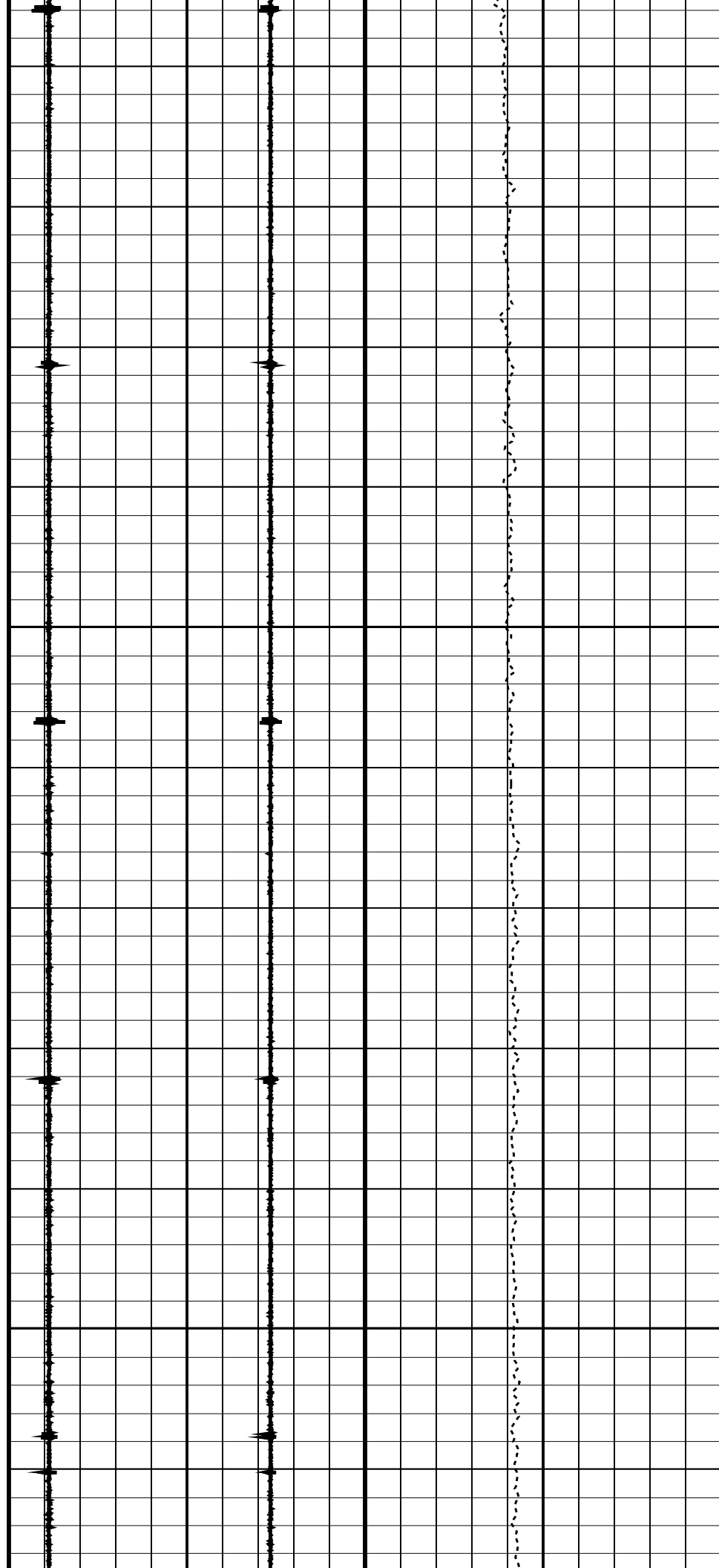


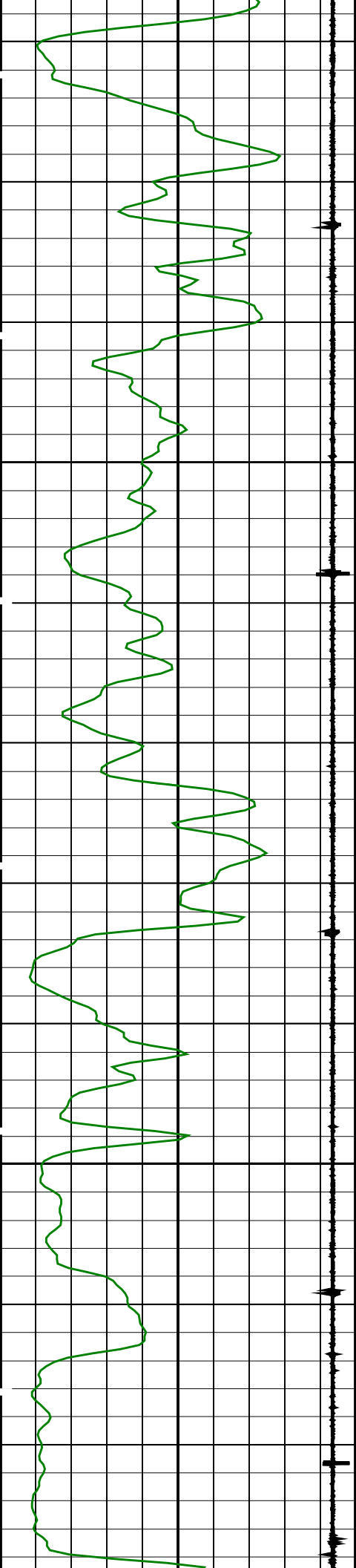




2825

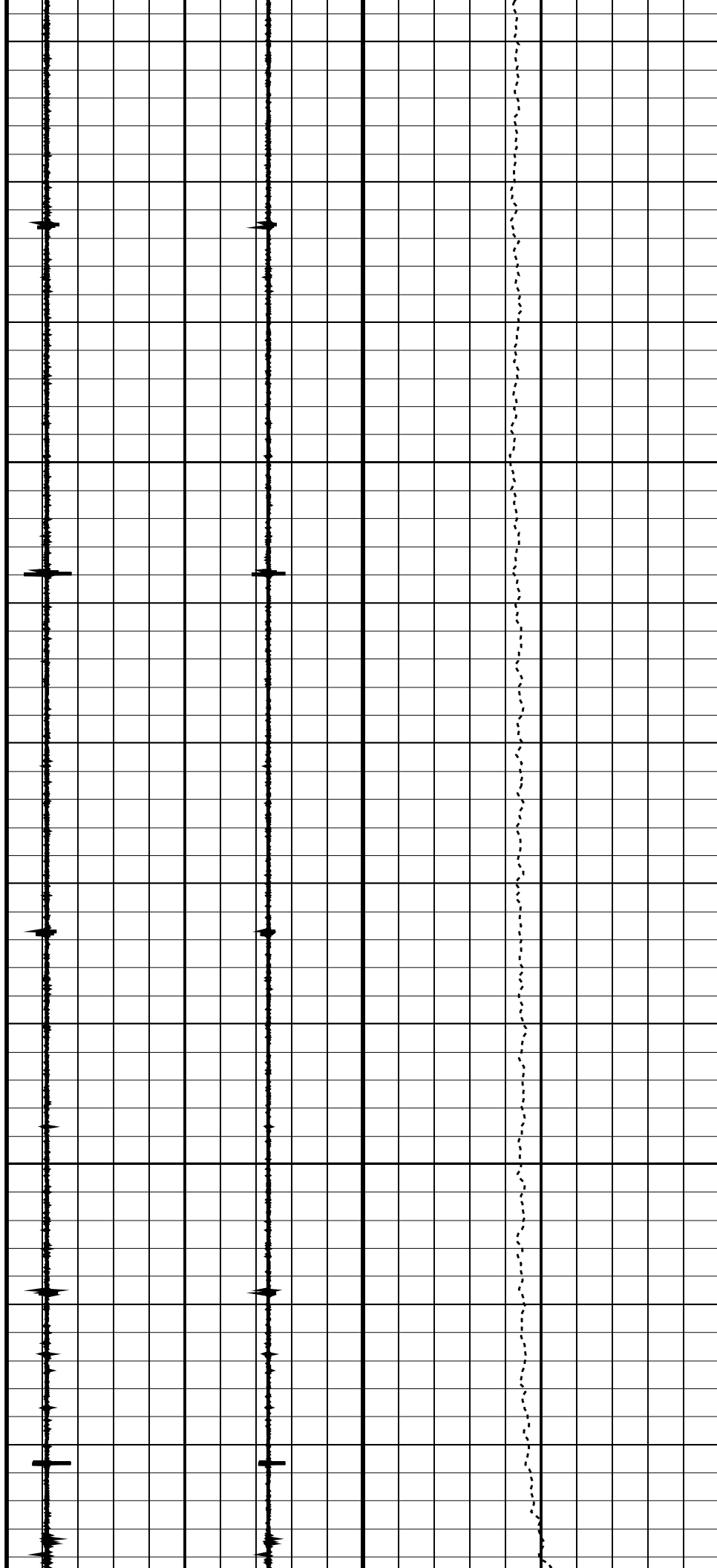
2850

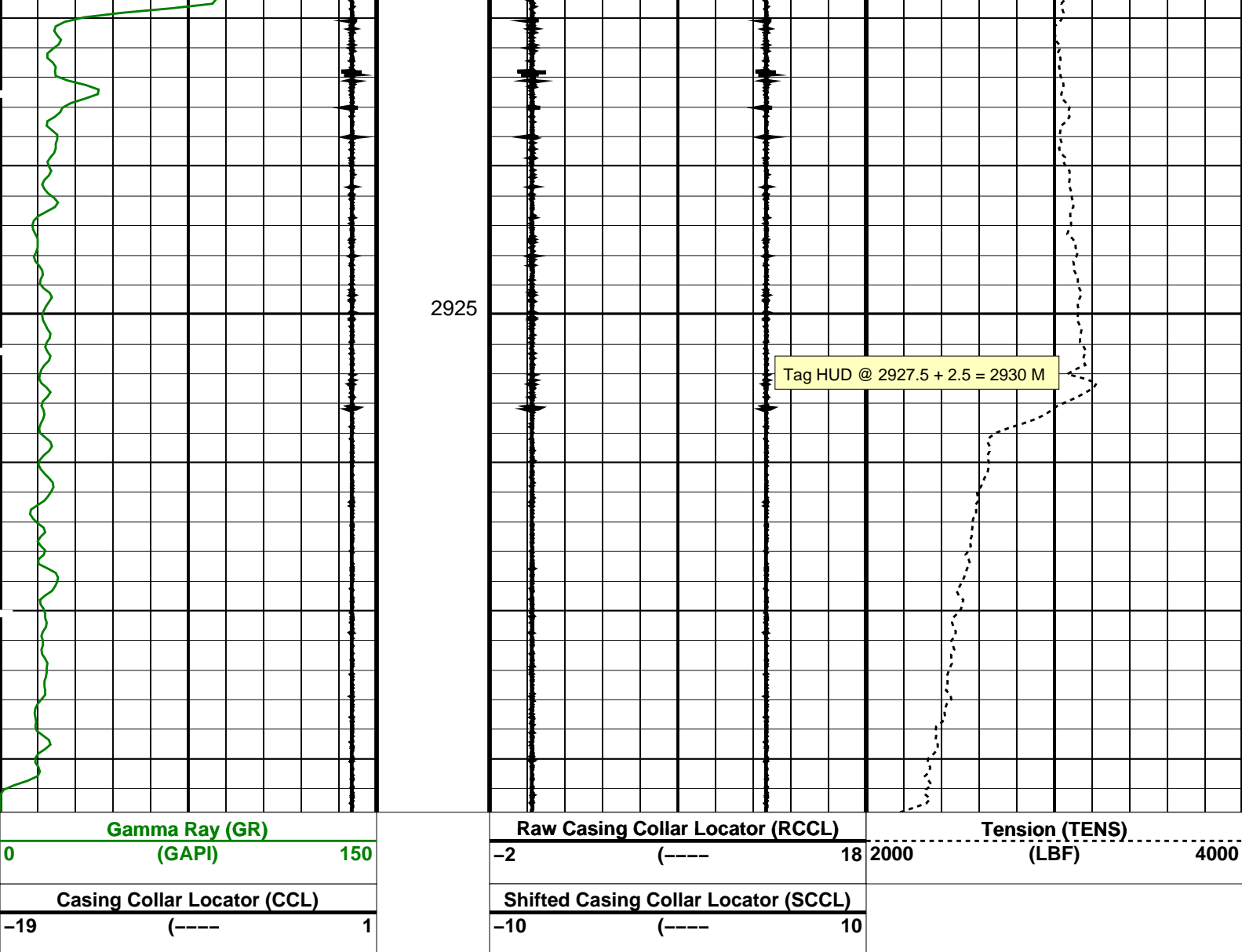




2875

2900





PIP SUMMARY

Time Mark Every 60 S

Parameters

DLIS Name	Description	Value
DO	System and Miscellaneous	
PP	Depth Offset for Playback	-3.5 M
	Playback Processing	NORMAL

Format: CORRELATION Vertical Scale: 1:200 Graphics File Created: 18-Dec-2006 19:43

OP System Version: 14C0-302

MCM

SHM_GUN 14C0-302 PGGT-D 14C0-302

Input DLIS Files

DEFAULT PERFO_006LUP FN:5 PRODUCER 18-Dec-2006 18:19 2945.3 M 2666.1 M

Output DLIS Files

DEFAULT PERFO_006PUP FN:7 PRODUCER 18-Dec-2006 19:43

Company: Esso Australia Pty Ltd.

Schlumberger

Well: **HLA A24a**
Field: **Halibut**
Rig: **453**
Country: **Australia**

MXAR Gun Hanger 4-1/2" HSD
Setting Record
17-Feb-2007