

Company: Ezzo Australia Pty Ltd.

Well: BMA A-18

Field: Bream

Rig: ISS / Rig 22

Country: Australia

2 1/2 " PowerCutter  
CCL

ISS / Rig 22  
Bream  
Bass Strait  
BMA A-18  
Ezzo Australia Pty Ltd.

LOCATION			
Bass Strait Gippsland Basin		Elev.: K.B. 33.5 m G.L. -59.4 m D.F. 32 m	
Permanent Datum:	Mean Sea Level	Elev.: 0 m	
Log Measured From:	Drill Floor	33.5 m	above Perm. Datum
Drilling Measured From:	Drill Floor		
State: Victoria	Max. Well Deviation 39 deg	Longitude 147°46'15" E	Latitude 38°30'4"S

Logging Date	17-Feb-2007								
Run Number	1								
Depth Driller	2314 m								
Schlumberger Depth	2212.2 m Tagged								
Bottom Log Interval	2210 m								
Top Log Interval	2210 m								
Casing Fluid Type	Inhibitor and Sea Water								
Salinity									
Density	7.8 lbm/gal								
Fluid Level									
BIT/CASING/TUBING STRING									
Bit Size	8.500 in								
From	0 m								
To	2382 m								
Casing/Tubing Size	7.000 in								
Weight	26 lbm/ft								
Grade	K-55								
From	13 m								
To	2332 m								
Maximum Recorded Temperatures									
Logger On Bottom	Time			12:30					
Unit Number	Location								
Recorded By	Michael Pratt/ Owen Darby								
Witnessed By	Mr J Dean/Mr D Broomfield								

PVT DATA				Run 1	Run 2	
Oil Density						
Water Salinity						
Gas Gravity						
Bo						
Bw						
1/Bg						
Bubble Point Pressure						
Bubble Point Temperature						
Solution GOR						
Maximum Deviation	39 deg					
CEMENTING DATA						
Primary/Squeeze	Primary					
Casing String No						
Lead Cement Type						
Volume						
Density						
Water Loss						
Additives						
Tail Cement Type						
Volume						
Density						
Water Loss						
Additives						
Expected Cement Top						
Logging Date						
Run Number						
Depth Driller						
Schlumberger Depth						
Bottom Log Interval						
Top Log Interval						
Casing Fluid Type						
Salinity						
Density						
Fluid Level						
BIT/CASING/TUBING STRING						
Bit Size						
From						
To						
Casing/Tubing Size						
Weight						
Grade						
From						
To						
Maximum Recorded Temperatures						
Logger On Bottom						
Unit Number	Location					
Recorded By						
Witnessed By						

## Date Created: 18-FEB-2007 7:09:21

### Logging Cable

Type:	2-32ZT
Serial Number:	24031
Length:	5619.90 M
Conveyance Method:	Wireline
Rig Type:	Offshore_Fixed

Log Sequence:	Subsequent Log In the Well
Reference Log Name:	Existing well completion equipment
Reference Log Run Number:	N/A
Reference Log Date:	22-01-2007

1. Correlated to Existing well completion equipment
2. Used IDW as primary depth control
3. Used Z-Chart as secondary depth control
- 4.
- 5.
- 6.

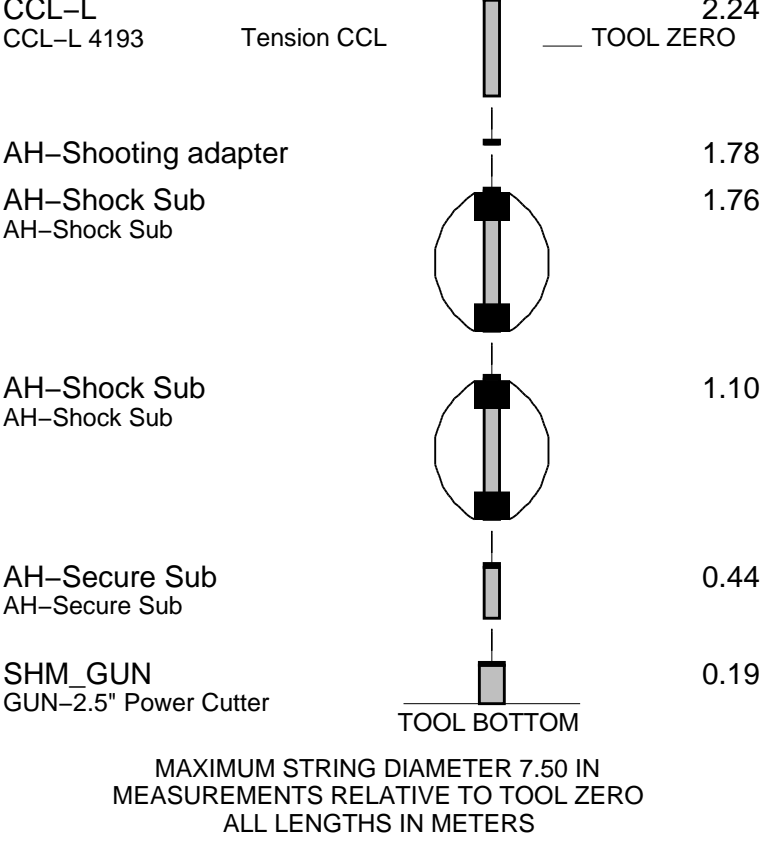
THE USE OF AND RELIANCE UPON THIS RECORDED-DATA BY THE HEREIN NAMED COMPANY (AND ANY OF ITS AFFILIATES, PARTNERS, REPRESENTATIVES, AGENTS, CONSULTANTS AND EMPLOYEES) IS SUBJECT TO THE TERMS AND CONDITIONS AGREED UPON BETWEEN SCHLUMBERGER AND THE COMPANY, INCLUDING: (a) RESTRICTIONS ON USE OF THE RECORDED-DATA; (b) DISCLAIMERS AND WAIVERS OF WARRANTIES AND REPRESENTATIONS REGARDING COMPANY'S USE OF AND RELIANCE UPON THE RECORDED-DATA; AND (c) CUSTOMER'S FULL AND SOLE RESPONSIBILITY FOR ANY INFERENCE DRAWN OR DECISION MADE IN CONNECTION WITH THE USE OF THIS RECORDED-DATA.

OS5:

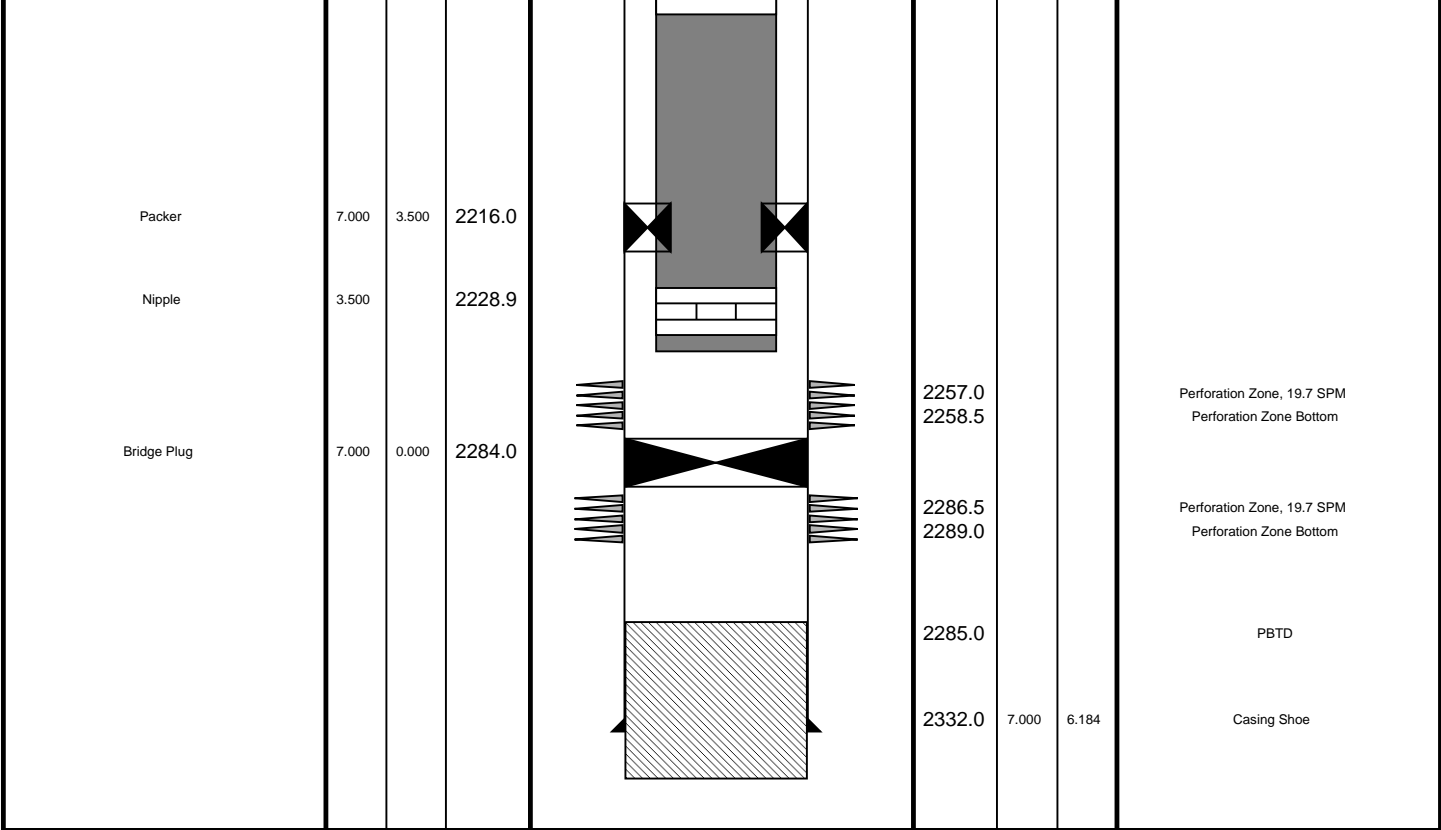
REMARKS: RUN NUMBER 2

approximately 2210m MDKB and cut tubing, POOH, rig down wireline.

Required cutting dpeth = 2210.0 m MDKB					
CCL to servering head = 1.9 m					
CCL stop depth = 2208.1m MDKB					
Schlumberger Crew:					
Operators =   Peter Battams & Gerald Brady (days)					
Brendan Glover & Max Handcock (Nights)					
Specialists =   Owen Darby & Michael Pratt					
RUN 1			RUN 2		
SERVICE ORDER #:			SERVICE ORDER #:		
PROGRAM VERSION:			PROGRAM VERSION:		
FLUID LEVEL:			FLUID LEVEL:		
LOGGED INTERVAL	START	STOP	LOGGED INTERVAL	START	STOP
EQUIPMENT DESCRIPTION					
RUN 1			RUN 2		
SURFACE EQUIPMENT					
WITM (SHM)					
DOWNHOLE EQUIPMENT					
AH-SLOTTED WEIGHT					
AH-SLOTTED WEIGHT					
AH-SLOTTED WEIGHT					
AH-SLOTTED WEIGHT					
AH-SLOTTED WEIGHT					
AH-SLOTTED WEIGHT					
AH-SWHS					
AH-SWHS 759					
CCL					



Production String	(in)		(m)	Well Schematic	(m)	(in)		Casing String
	OD	ID	MD		MD	OD	ID	
Tubing Hanger	7.000	3.500	12.5		12.0	10.750	9.760	Casing String Casing String Liner Hanger
Tubing	3.500		12.5		12.0	7.000	6.184	
Shutin Valve	3.500		449.4			10.750	7.000	
Gas Lift Mandrel	3.500		610.0					
Nipple	3.500		624.0					
Gas Lift Mandrel	3.500		1039.5					Casing Shoe
Nipple	3.500		1053.6		833.4	10.750	9.760	
Gas Lift Mandrel	3.500		1315.7					
Nipple	3.500		1329.8					

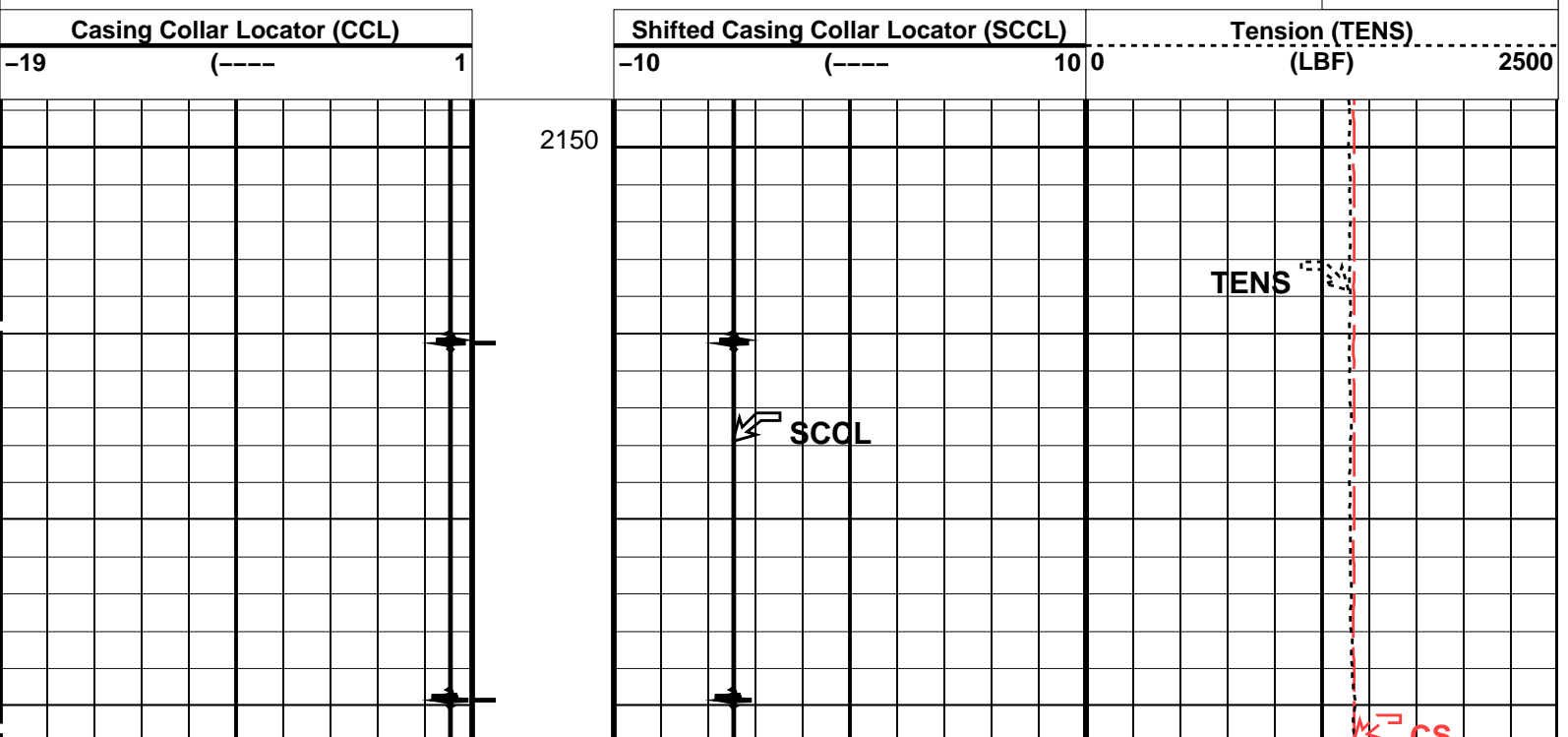


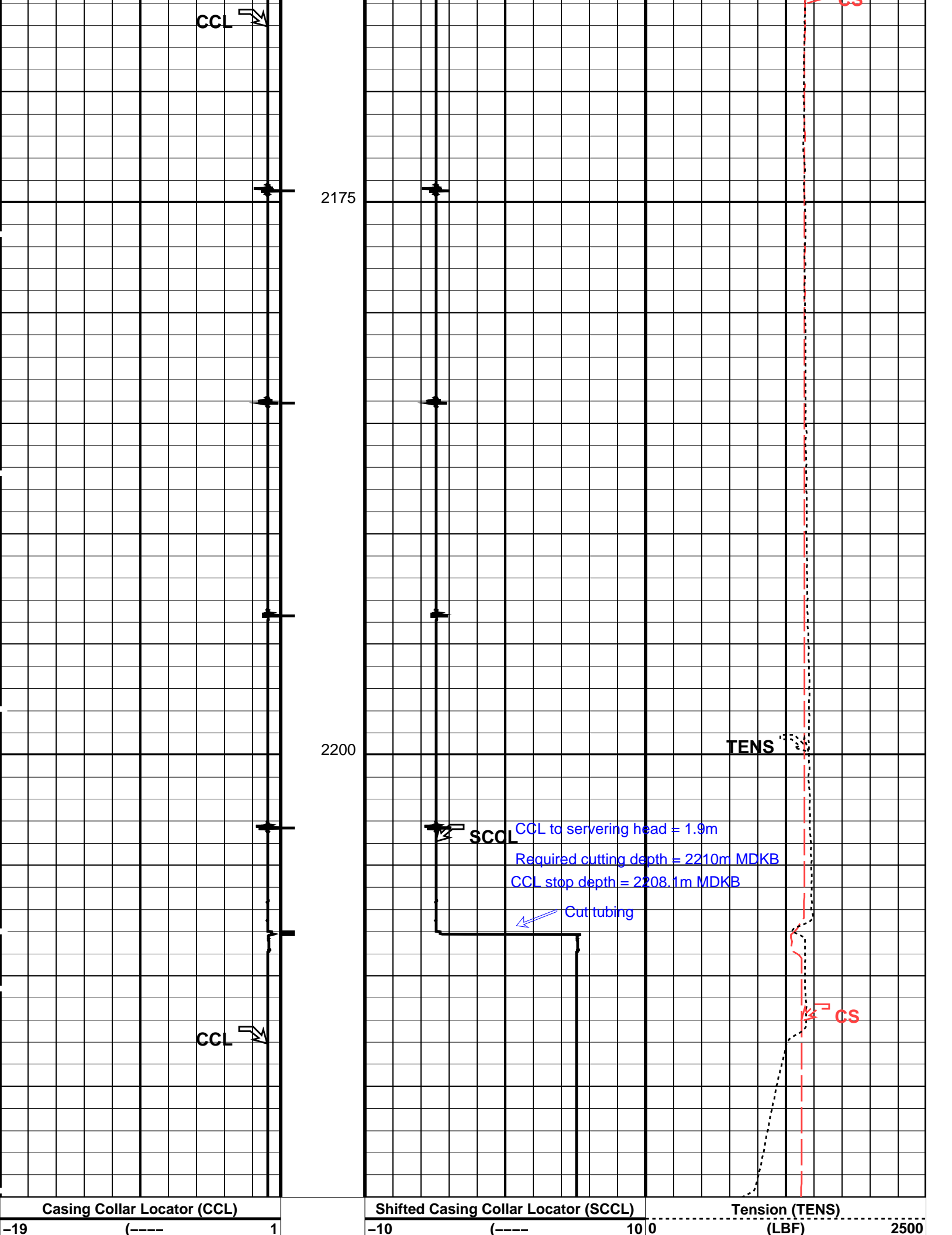
Job Events Summary

MAXIS Field Log

Schlumberger Job Event Summary

Time	Elapsed Time	Depth (M)	File
Simulated Log	17-Feb-2007 18:30	000:03	PERFO_015LUP
OP checked toolstring	17-Feb-2007 21:00		
Rig Up Started	18-Feb-2007 3:36	000:07	PERFO_032LUP
Simulated Log			
Hot checked toolstring			
Log Pass (down)	18-Feb-2007 5:00	000:37	427.8 – 2221.1 PERFO_034LDP
RIH with powercutter			
Log Pass (up)	18-Feb-2007 5:47	000:08	2220.2 – 2153.9 PERFO_038LUP
Tie in pass			
Log Pass (up)	18-Feb-2007 5:58	000:28	2220.0 – 2148.7 PERFO_039LUP
Cutting pass			
Rig Down Completed	18-Feb-2007 8:00		





PIP SUMMARY

Time Mark Every 60 S

Casing Collars

Parameters			
DLIS Name	Description	Value	
CCLD	CCL-L: Casing Collar Locator	12	IN
CCLT	CCL reset delay	0.3	V
	CCL Detection Level		

Format: PERFO\_1

Vertical Scale: 1:200

Graphics File Created: 18-Feb-2007 05:58

OP System Version: 14C0-302

MCM

SHM\_GUN14C0-302CCL-L14C0-302

Output DLIS Files

DEFAULTPERFO\_039LUPFN:38PRODUCER18-Feb-2007 05:58

Schlumberger

2 1/2" PowerCutter  
Correlation Pass

MAXIS Field Log

Company: Esso Australia

Well: BMA A-18

Output DLIS Files

DEFAULTPERFO\_038LUPFN:37PRODUCER18-Feb-2007 05:47

OP System Version: 14C0-302

MCM

SHM\_GUN14C0-302CCL-L14C0-302

PIP SUMMARY

Time Mark Every 60 S

Casing Collars

