

Company: Esso Australia Pty Ltd.

Well: BMA A-26

Field: Bream

Rig: Rig 22

Country: Australia

2.5" Powercutter-CCL

Rig 22  
Bream  
Bass Strait  
BMA A-26  
Esso Australia Pty Ltd.

LOCATION	
Bass Strait Gippsland Basin	Elev.: K.B. 33.5 m G.L. -59 m D.F. 32 m
Permanent Datum: Log Measured From: Drilling Measured From:	Mean Sea Level Drill Floor Kelly Bushing
	Elev.: 0 m 32.0 m above Perm. Datum

Rig: Field: Location: Well: Company:	State: Victoria	Max. Well Deviation 72 deg	Longitude 147°46' 15"E	Latitude 38°30' 4"S
--	--------------------	-------------------------------	---------------------------	------------------------

Logging Date	31-Dec-2006
--------------	-------------

Run Number	1
------------	---

Depth Driller	4475 m
---------------	--------

Schlumberger Depth	3649.8 m
--------------------	----------

Bottom Log Interval	3649.8 m
---------------------	----------

Top Log Interval	3604.6 m
------------------	----------

Casing Fluid Type	Inhibited Sea Water
-------------------	---------------------

Salinity	
----------	--

Density	8.3 lbm/gal
---------	-------------

Fluid Level	0 m
-------------	-----

BIT/CASING/TUBING STRING	
--------------------------	--

Bit Size	8.000 in
----------	----------

From	4033 m
------	--------

To	4425 m
----	--------

Casing/Tubing Size	3.500 in
--------------------	----------

Weight	26 lbm/ft
--------	-----------

Grade	L-80
-------	------

From	12 m
------	------

To	4339 m
----	--------

Maximum Recorded Temperatures				
-------------------------------	--	--	--	--

Logger On Bottom	1-Jan-2007			
------------------	------------	--	--	--

Unit Number	3827	AUSL		
-------------	------	------	--	--

Recorded By	Alex Sword			
-------------	------------	--	--	--

Witnessed By	Mr. Bruce Woodward/Mr. Shane Murphy			
--------------	-------------------------------------	--	--	--

PVT DATA					Run 1	Run 2
Oil Density						
Water Salinity						
Gas Gravity						
Bo						
Bw						
1/Bg						
Bubble Point Pressure						
Bubble Point Temperature						
Solution GOR						
Maximum Deviation	72 deg					
CEMENTING DATA						
Primary/Squeeze	Primary					
Casing String No						
Lead Cement Type						
Volume						
Density						
Water Loss						
Additives						
Tail Cement Type						
Volume						
Density						
Water Loss						
Additives						
Expected Cement Top						
Logging Date						
Run Number						
Depth Driller						
Schlumberger Depth						
Bottom Log Interval						
Top Log Interval						
Casing Fluid Type						
Salinity						
Density						
Fluid Level						
BIT/CASING/TUBING STRING						
Bit Size						
From						
To						
Casing/Tubing Size						
Weight						
Grade						
From						
To						
Maximum Recorded Temperatures						
Logger On Bottom						
Unit Number						
Recorded By						
Witnessed By						

Date Created: 2-JAN-2007 8:23:27

### Logging Cable

Type:	2-32ZT
Serial Number:	-999
Length:	6249.92 M
Conveyance Method:	Wireline
Rig Type:	Offshore_Fixed

Log Sequence:	Subsequent Trip To the Well
Reference Log Name:	Tubing Tally
Reference Log Run Number:	
Reference Log Date:	19-Jan-1998
Subsequent Trip Down Log Correction:	0.00 M

1. Schlumberger deth control policy followed
- 2.
- 3.
- 4.
- 5.
- 6.

THE USE OF AND RELIANCE UPON THIS RECORDED-DATA BY THE HEREIN NAMED COMPANY (AND ANY OF ITS AFFILIATES, PARTNERS, REPRESENTATIVES, AGENTS, CONSULTANTS AND EMPLOYEES) IS SUBJECT TO THE TERMS AND CONDITIONS AGREED UPON BETWEEN SCHLUMBERGER AND THE COMPANY, INCLUDING: (a) RESTRICTIONS ON USE OF THE RECORDED-DATA; (b) DISCLAIMERS AND WAIVERS OF WARRANTIES AND REPRESENTATIONS REGARDING COMPANY'S USE OF AND RELIANCE UPON THE RECORDED-DATA; AND (c) CUSTOMER'S FULL AND SOLE RESPONSIBILITY FOR ANY INFERENCE DRAWN OR DECISION MADE IN CONNECTION WITH THE USE OF THIS RECORDED-DATA.

OTHER SERVICES2  
OS1:  
OS2:  
OS3:  
OS4:  
OS5:

REMARKS: RUN NUMBER 2

During logging operation was unable to achieve desired cut depth with powercutter string due to high deviation and poor tubing condition. Client decided to make cut @ 200m higher than programmed cut depth.

Call was made by client to cut at current depth in between collars to reduce the fish length as much as possible.

Cutter used was a 2.5" HMX Powercutter.

CCL to Topshot = 1.94 Metres.




Schlumberger Crew:

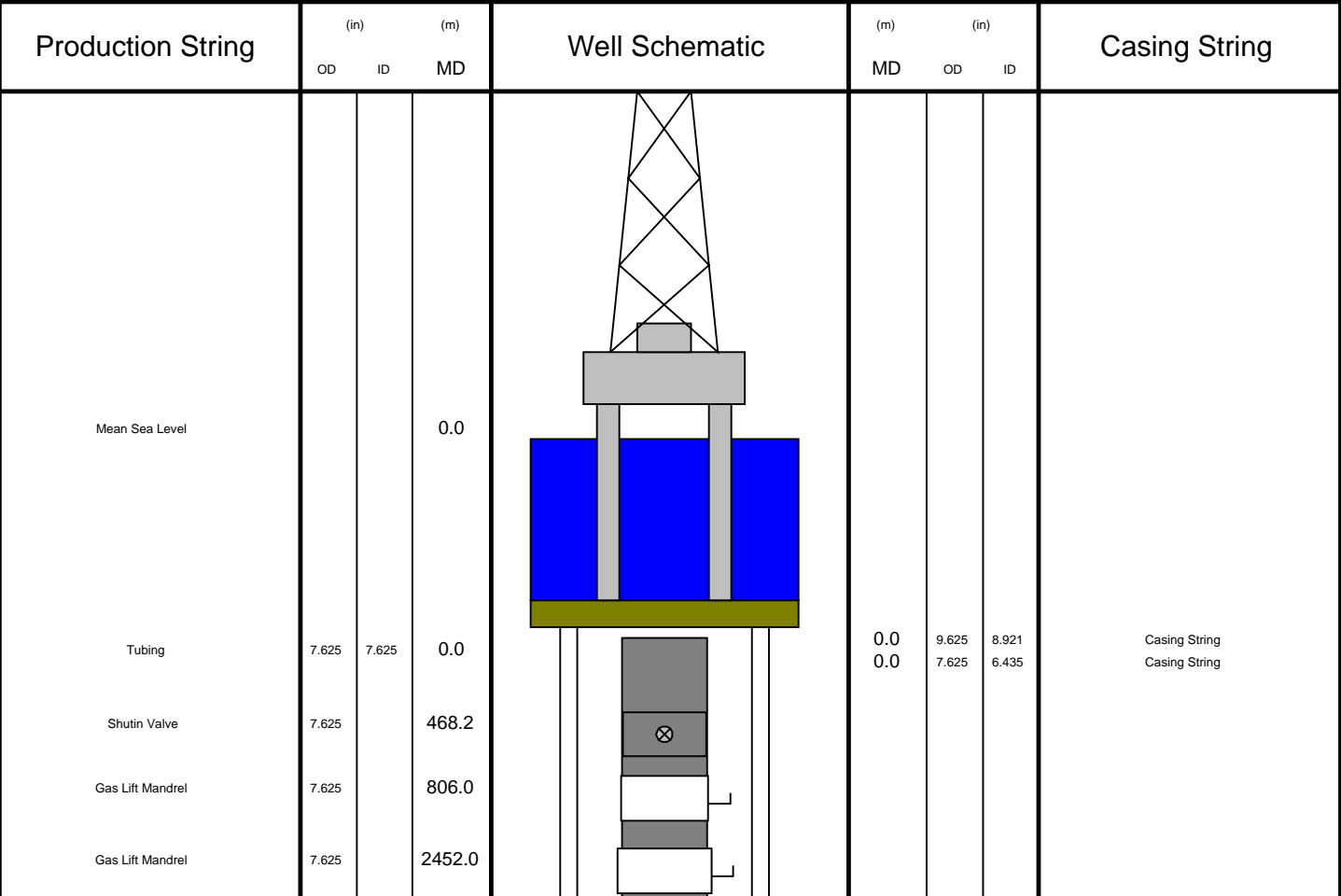
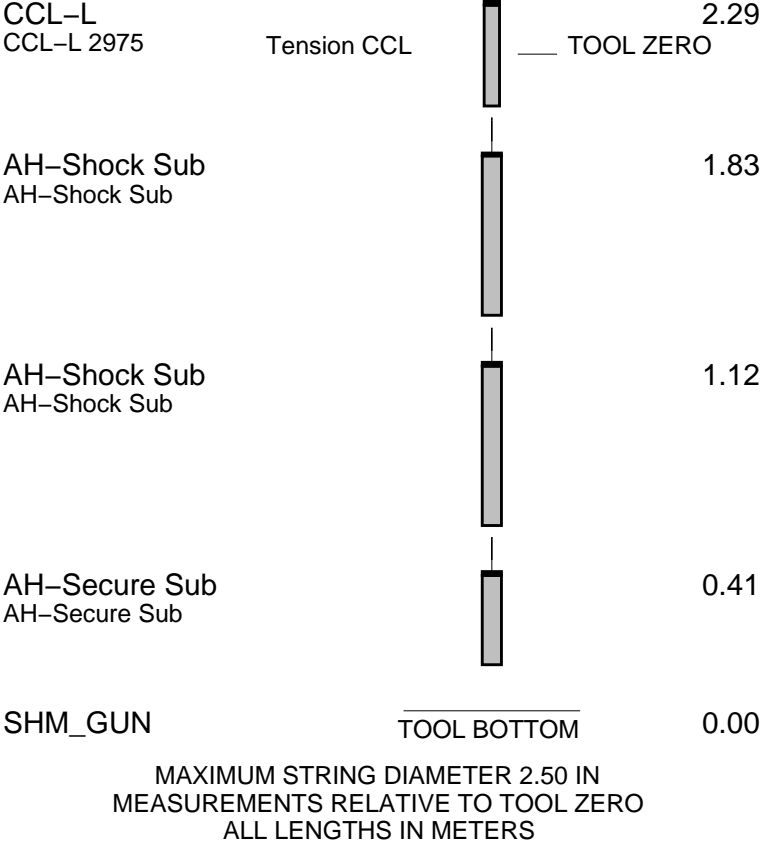
Days: Dave Stuckey, Simon Kiss Nights: Paul Flood, Gerald Brady.

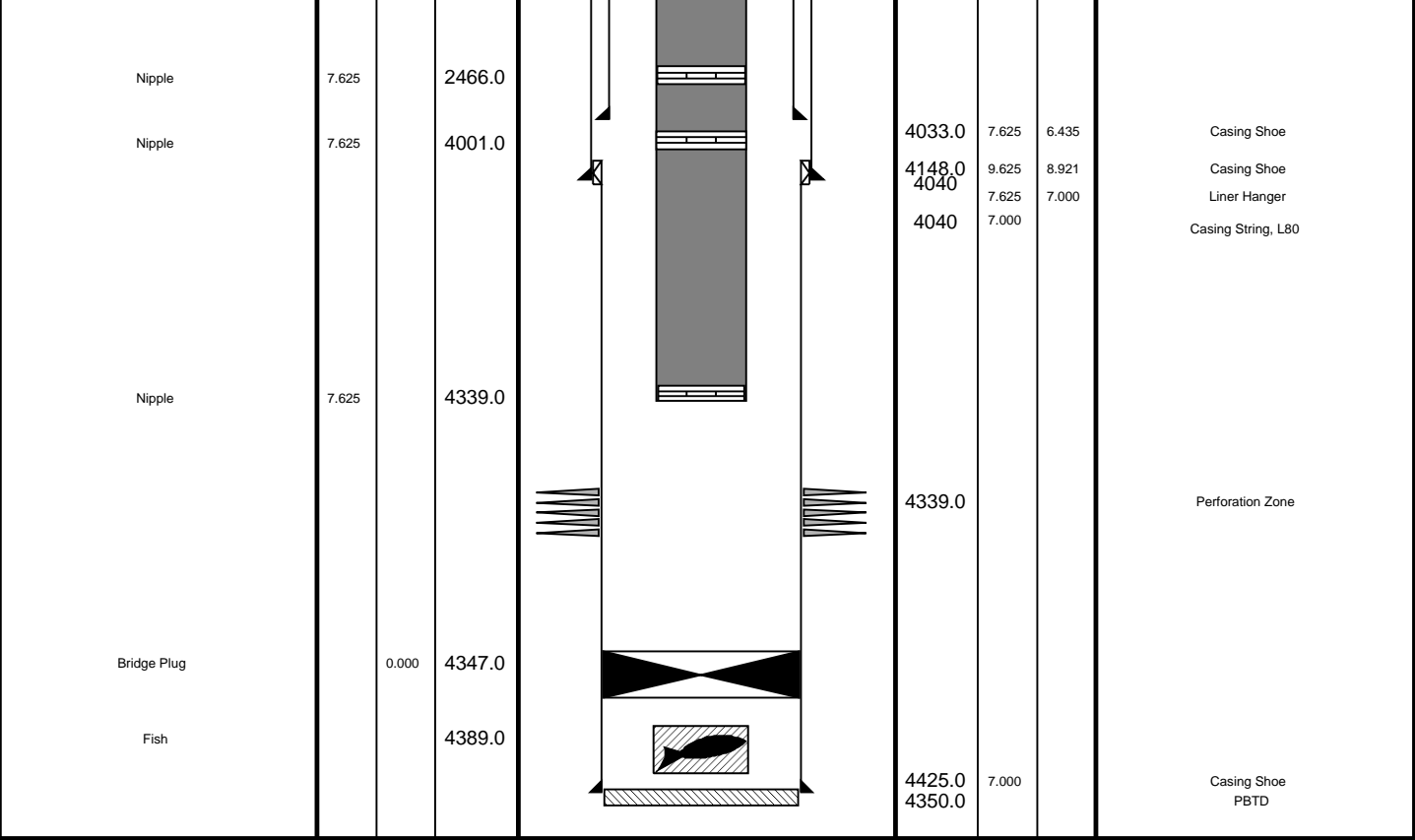
Performed by SCHLUMBERGER

RUN 1			RUN 2		
SERVICE ORDER #:			SERVICE ORDER #:		
PROGRAM VERSION:			PROGRAM VERSION:		
FLUID LEVEL:			FLUID LEVEL:		
LOGGED INTERVAL	START	STOP	LOGGED INTERVAL	START	STOP

EQUIPMENT DESCRIPTION					
RUN 1			RUN 2		

SURFACE EQUIPMENT		
WITM (SHM)		
DOWNHOLE EQUIPMENT		
MH-22 MH-22		5.22
EQF-38 EQF-38		4.74
EQF-38 EQF-38		3.52





# Shoot Log

MAXIS Field Log

## PERFO2 Operational Summary Listing

Device	Status	Req Depth ( M)	Obs Depth ( M)	Time Used
GUN1	Used	3651.9	3651.9	Mon Jan 01 00:57:47 2007

Company:

Well:

### Output DLIS Files

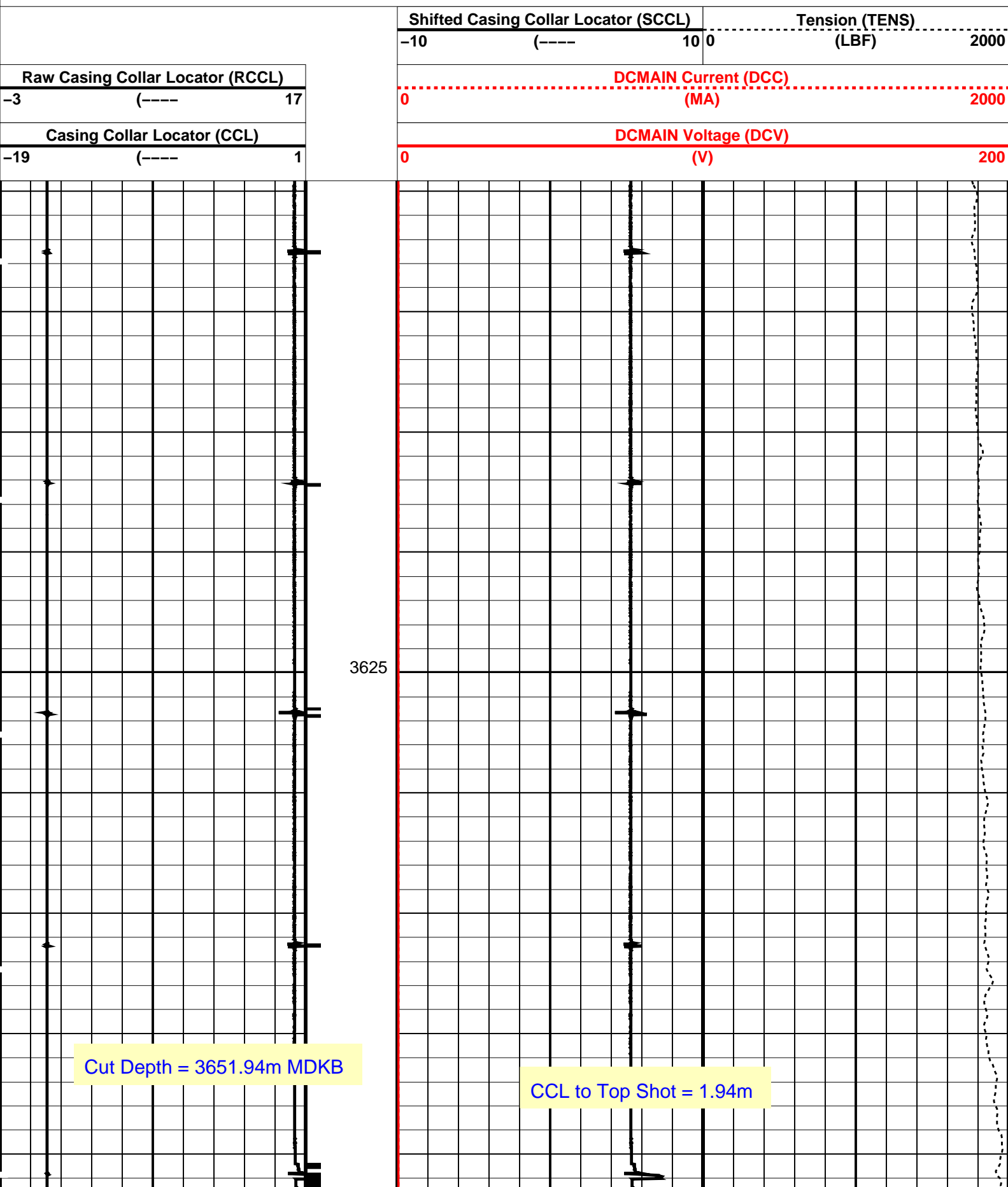
DEFAULT	PERFO_016LUP	FN:15	PRODUCER	01-Jan-2007 00:54	3649.8 M	3604.6 M
---------	--------------	-------	----------	-------------------	----------	----------

## MCM

**14C0-302**

## └─ Casing Collars

**Time Mark Every 60 S**



CCL Stop Depth = 3650m MDKB

<b>Casing Collar Locator (CCL)</b>		
-19	(----	1
<b>Raw Casing Collar Locator (RCCL)</b>		
-3	(----	17

DCMAIN Voltage (DCV)	
0	200
(V)	
DCMAIN Current (DCC)	
0	2000
(MA)	
Shifted Casing Collar Locator (SCCL)	Tension (TENS)
-10	0
(----	(LBF)
10	2000

## PIP SUMMARY

## └─ Casing Collars

**Time Mark Every 60 S**

## Parameters

DLIS Name	Description	Value
CCL-L	Casing Collar Locator	
CCLD	CCL reset delay	12
CCLT	CCL Detection Level	0.3

Format: PERFO      Vertical Scale: 1:200      Graphics File Created: 01-Jan-2007 00:54

**OP System Version: 14C0-302**  
**MCM**

SHM GUN	14C0-302	CCL-L	14C0-302
---------	----------	-------	----------

## Output DLIS Files

DEFAULT PERFO 016LUP FN:15 PRODUCER 01-Jan-2007 00:54

Company: **Esso Australia Pty Ltd.**

# Schlumberger

Well: **BMA A-26**  
Field: **Bream**  
Rig: **Rig 22**  
Country: **Australia**

## 2.5" Powercutter-CCL