

Company: Esso Australia Pty Ltd.

Well: HLA A2b

Field: Gippsland Basin

Rig: 453

Country: Australia

453
Rig: Gippsland Basin
Field: Bass Strait
Location: HLA A2b
Well:
Company: Esso Australia Pty Ltd.

Junk Basket
4 1/2" HSD Gun
PowerJet Omega

LOCATION			
Bass Strait		Elev.:	K.B. 29.47 m
Gippsland Basin			G.L. 72.5 m
Hailbut			D.F. 29.47 m
Permanent Datum:	Mean Sea Level	Elev.:	0 m
Log Measured From:	Drill Floor	29.5 m	above Perm. Datum
Drilling Measured From:	Rotary Table		

State: Victoria	Max. Well Deviation 55 deg	Longitude E 148 19 13.173	Latitude S 38 24 15.111
-----------------	-------------------------------	------------------------------	----------------------------

Logging Date	17-Nov-2006		
Run Number	1		
Depth Driller	3347 m		
Schlumberger Depth	3294.5 m Tagged		
Bottom Log Interval	3125 m		
Top Log Interval	3118.9 m		
Casing Fluid Type	Brine		
Salinity			
Density	8.55 g/cm3		
Fluid Level	0 m		
BIT/CASING/TUBING STRING			
Bit Size	8.500 in		
From	0 m		
To	3347 m		
Casing/Tubing Size	7.000 in		
Weight	26 lbn/ft		
Grade	J-55		
From	0 m		
To	3299 m		
Maximum Recorded Temperatures			
Logger On Bottom	17-Nov-2006	14:45	
Unit Number	41	AUSL	
Recorded By	Owen Darby		
Witnessed By	Bim Steel		

PVT DATA				Run 1	Run 2	Run 3
Oil Density						
Water Salinity						
Gas Gravity						
Bo						
Bw						
1/Bg						
Bubble Point Pressure						
Bubble Point Temperature						
Solution GOR						
Maximum Deviation	55 deg					
CEMENTING DATA						
Primary/Squeeze	Primary					
Casing String No						
Lead Cement Type						
Volume						
Density						
Water Loss						
Additives						
Tail Cement Type						
Volume						
Density						
Water Loss						
Additives						
Expected Cement Top						
Logging Date						
Run Number						
Depth Driller						
Schlumberger Depth						
Bottom Log Interval						
Top Log Interval						
Casing Fluid Type						
Salinity						
Density						
Fluid Level						
BIT/CASING/TUBING STRING						
Bit Size						
From						
To						
Casing/Tubing Size						
Weight						
Grade						
From						
To						
Maximum Recorded Temperatures						
Logger On Bottom						
Unit Number						
Recorded By						
Witnessed By						

DEPTH SUMMARY LISTING

Date Created: 17-NOV-2006 13:08:21

Depth System Equipment

Depth Measuring Device		Tension Device		Logging Cable	
Type:	IDW-H	Type:	CMTD-B/A	Type:	7-46V-XS
Serial Number:	796	Serial Number:	1721	Serial Number:	76075
Calibration Date:	06-Sep-2006	Calibration Date:	21-Dec-2006	Length:	5999.07 M
Calibrator Serial Number:	1009	Calibrator Serial Number:	1051	Conveyance Method: Wireline Rig Type: Offshore_Fixed	
Calibration Cable Type:	7-46V-XS	Calibration Gain:	0.95		
Wheel Correction 1:	-3	Calibration Offset:	524.00		
Wheel Correction 2:	-2				

Depth Control Parameters

Log Sequence:	Subsequent Trip To the Well
Reference Log Name:	Solar composite
Reference Log Run Number:	1
Reference Log Date:	Not provided
Subsequent Trip Down Log Correction:	2.00 M

Depth Control Remarks

1. Correlated to open hole log provided by client
2. Used IDW as primary depth control
3. Used Z-chart as secondary depth control
4.
5.
6.

DISCLAIMER

THE USE OF AND RELIANCE UPON THIS RECORDED-DATA BY THE HEREIN NAMED COMPANY (AND ANY OF ITS AFFILIATES, PARTNERS, REPRESENTATIVES, AGENTS, CONSULTANTS AND EMPLOYEES) IS SUBJECT TO THE TERMS AND CONDITIONS AGREED UPON BETWEEN SCHLUMBERGER AND THE COMPANY, INCLUDING: (a) RESTRICTIONS ON USE OF THE RECORDED-DATA; (b) DISCLAIMERS AND WAIVERS OF WARRANTIES AND REPRESENTATIONS REGARDING COMPANY'S USE OF AND RELIANCE UPON THE RECORDED-DATA; AND (c) CUSTOMER'S FULL AND SOLE RESPONSIBILITY FOR ANY INFERENCE DRAWN OR DECISION MADE IN CONNECTION WITH THE USE OF THIS RECORDED-DATA.

OTHER SERVICES1	OTHER SERVICES2
OS1: None	OS1:
OS2:	OS2:
OS3:	OS3:
OS4:	OS4:
OS5:	OS5:

REMARKS: RUN NUMBER 1	REMARKS: RUN NUMBER 2
Objective:	
Rig up wireline, Make up junk basket toolstring with PGGT-D and 6"	
gauge ring, RIH to HUD to ensure that the perforation interval can be reached.	
POOH with junk basket, made up 4 1/2" HSD Gun tool string with powerjet omega	
charges and RIH, correlate to open hole log provided by client, perforate	
interval 3118.9m to 3125.0m MDKB, POOH, rig down.	

CCL to junk basket bottom = 2.5m










CCL stop depth = 3117.3 m MDKB

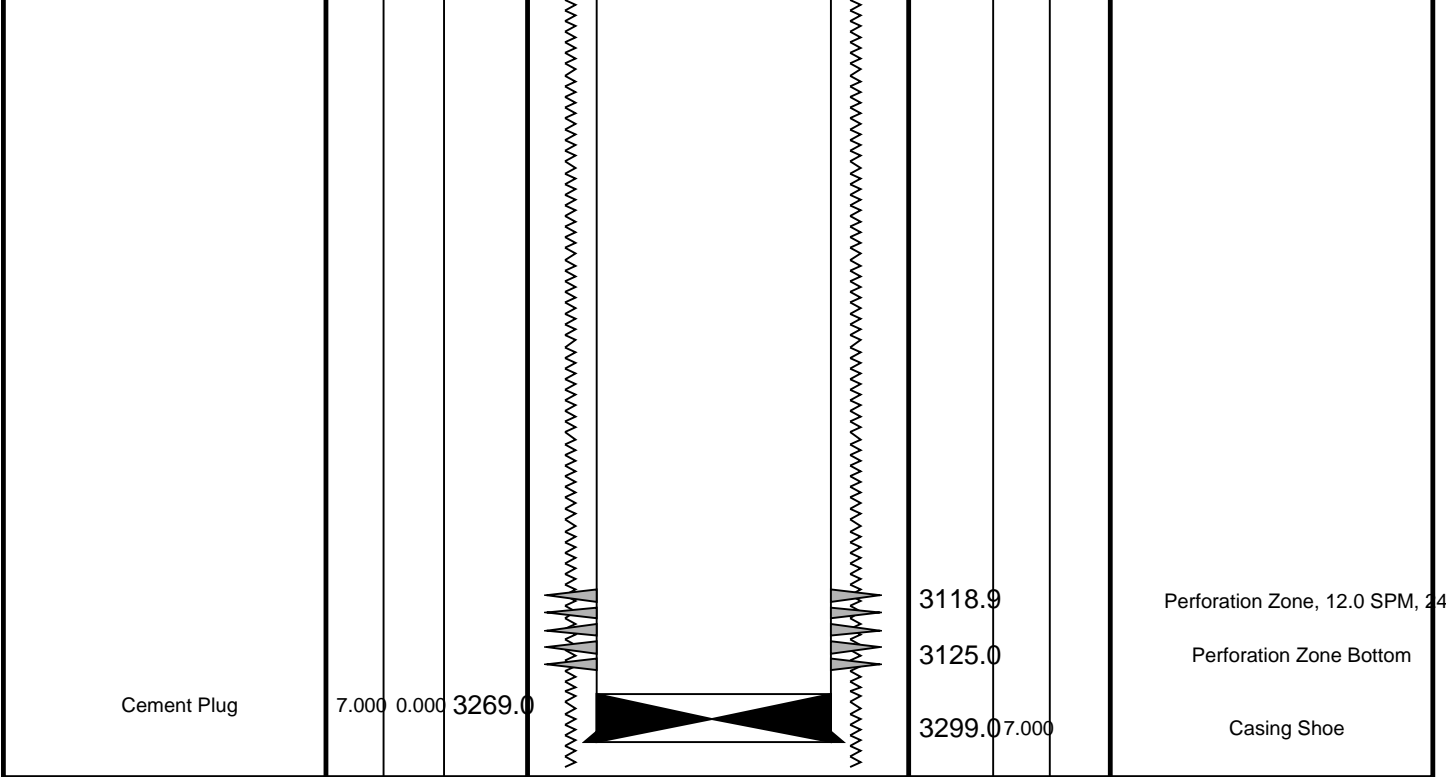
Specialist = Owen Darby (Wireline) Rowan Blok & Mark Williams (TCP)

RUN 1 SERVICE ORDER #: L0501G207 PROGRAM VERSION: 14C0-302 FLUID LEVEL: 0 m			RUN 2 SERVICE ORDER #: PROGRAM VERSION: FLUID LEVEL:		
LOGGED INTERVAL	START	STOP	LOGGED INTERVAL	START	STOP

RUN 2

SURFACE EQUIPMENT		SURFACE EQUIPMENT	
		WITM (SHM)	

DOWNHOLE EQUIPMENT			DOWNHOLE EQUIPMENT		
PEH-A PEH-A 1		5.11	PEH-A PEH-A 1		9.20
AH-64 AH-64 9802		4.56	AH-64 AH-64 9802		8.65
PGGT-D PGGC 227 PGGH-D 227		4.16	PGGT-D PGGC 227 PGGH-D 227		8.25
	Gamma Ray	1.07		Gamma Ray	1.07
	CCL Casin Tension	TOOL ZERO		CCL Casin Tension	TOOL ZERO
AH-283 AH-283 5002		2.37	AH-283 AH-283 5002		6.46
			SHM_GUN-4 1/2" HSD GUN		6.16



Schlumberger

Job Events Summary

MAXIS Field Log

Schlumberger Job Event Summary

Time	Elapsed Time	Depth (M)	File
Rig Up Started	17-Nov-2006 13:30		
Simulated Log	17-Nov-2006 14:11	000:03	PERFO_009LUP
OP checked JB tool string			
Log Pass (down)	17-Nov-2006 14:46	000:45	8.4 - 3321.1 PERFO_011LDP
RIH with JB			
Simulated Log	17-Nov-2006 20:09	000:02	PERFO_025LUP
Hot checked toolstring			
Log Pass (up)	17-Nov-2006 22:35	000:07	3142.2 - 3077.1 PERFO_032LUP
HSD Correlation			
Log Pass (up)	17-Nov-2006 22:45	000:17	3140.0 - 3063.8 PERFO_034LUP
Shooting pass			
Rig Down Completed	17-Nov-2006 23:26		

Schlumberger

4 1/2" HSD Gun Shooting Pass

MAXIS Field Log

PERFO2 Operational Summary Listing

Device Status Req Depth (M) Obs Depth (M) Time Used

GUN1 Used 3118.9 3118.9 Sat Nov 17 22:12:00 2006

Company: Esso Australia Pty Ltd.

Well: HLA A2b

Output DLIS Files

DEFAULT PERFO_034LUP FN:33 PRODUCER 17-Nov-2006 22:45 3140.0 M 3063.8 M

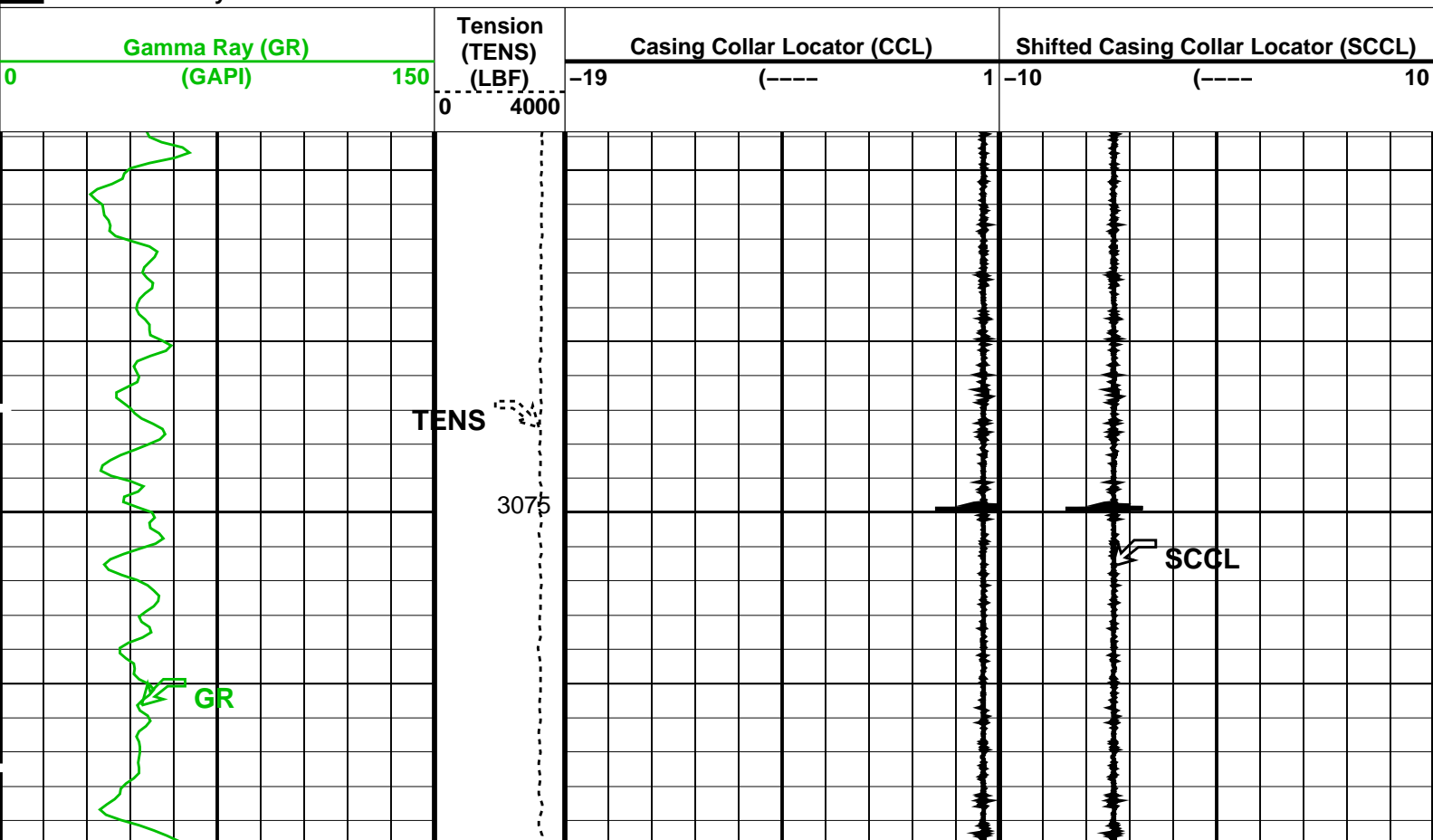
OP System Version: 14C0-302

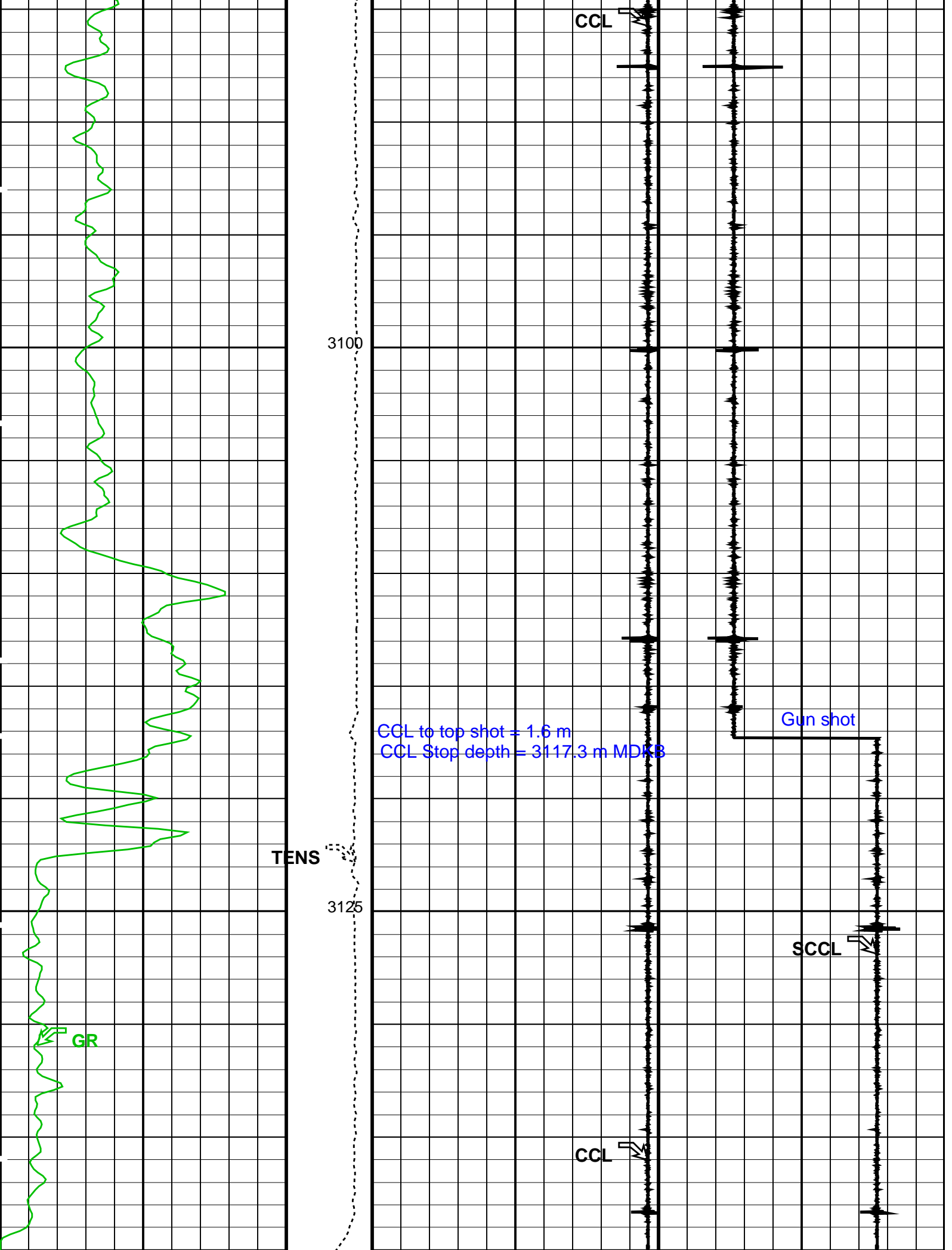
MCM

SHM_GUN 14C0-302 PGGT-D 14C0-302

PIP SUMMARY


Time Mark Every 60 S





Gamma Ray (GR) (GAPI)		Tension (TENS) (LBF)	Casing Collar Locator (CCL)	Shifted Casing Collar Locator (SCCL)
0	150	-19	1	-10
		0	4000	10

PIP SUMMARY				
Time Mark Every 60 S				
Format: PERFO		Vertical Scale: 1:200		Graphics File Created: 17-Nov-2006 22:45
OP System Version: 14C0-302				
MCM				
SHM_GUN	14C0-302	PGGT-D	14C0-302	
Output DLIS Files				
DEFAULT	PERFO_034LUP	FN:33	PRODUCER	17-Nov-2006 22:45

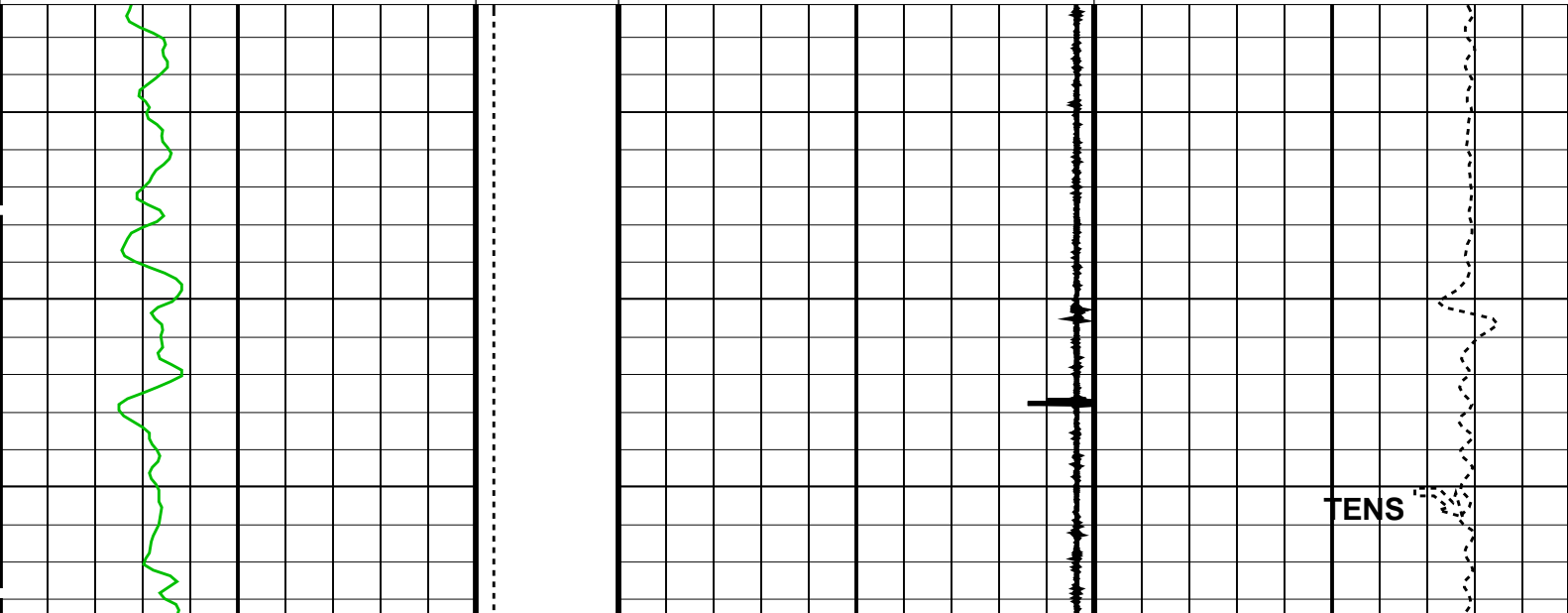


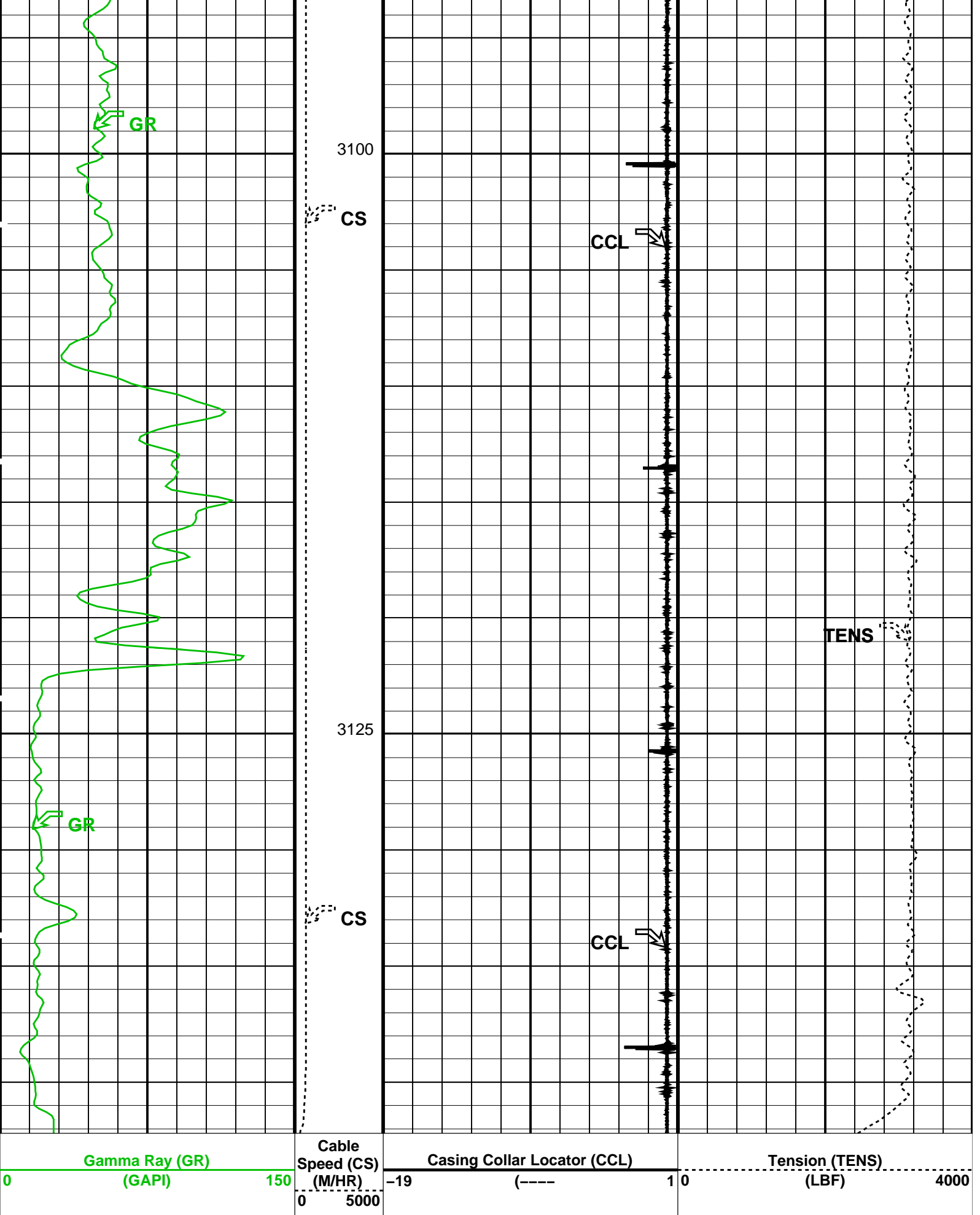
4 1/2" HSD Gun

Correlation Pass

MAXIS Field Log

Company: Esso Australia Pty Ltd.					Well: HLA A2b	
Output DLIS Files						
DEFAULT	PERFO_032LUP	FN:31	PRODUCER	17-Nov-2006 22:35		
OP System Version: 14C0-302						
MCM						
SHM_GUN	14C0-302	PGGT-D		14C0-302		

PIP SUMMARY				
Time Mark Every 60 S				
Gamma Ray (GR) (GAPI)	Cable Speed (CS) (M/HR)	Casing Collar Locator (CCL)	Tension (TENS) (LBF)	
0	150	-19	0	4000
	0	5000		
<div>  </div>				



Time Mark Every 60 S

Format: PERFO_1 Vertical Scale: 1:200

Graphics File Created: 17-Nov-2006 22:35

OP System Version: 14C0-302
MCM

SHM_GUN 14C0-302 PGGT-D 14C0-302

Output DLIS Files

DEFAULT PERFO_032LUP FN:31 PRODUCER 17-Nov-2006 22:35



Junk Basket
Correlation Pass

MAXIS Field Log

Company: Esso Australia Pty Ltd. Well: HLA A2b

Output DLIS Files

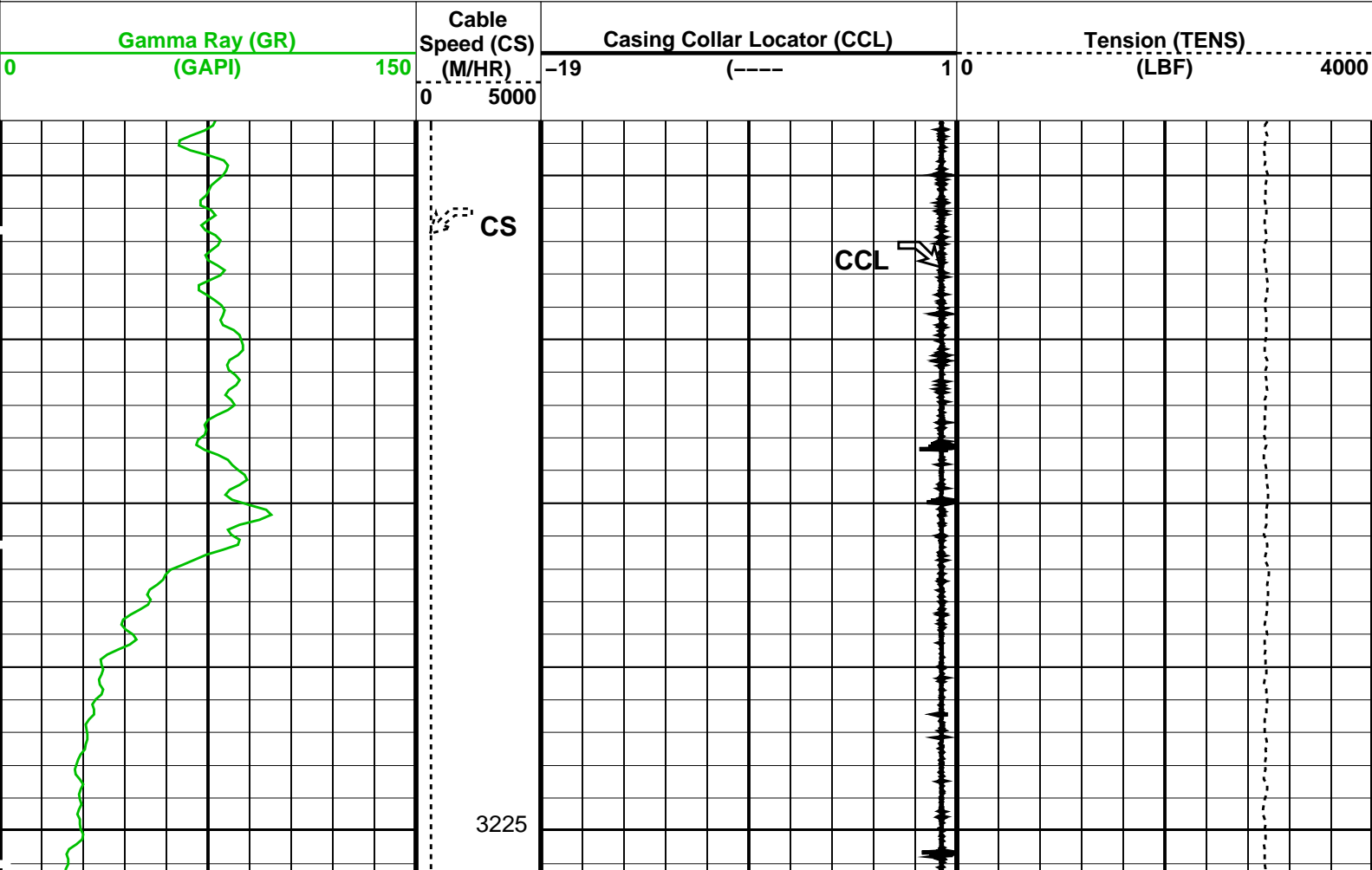
DEFAULT PERFO_019LUP FN:18 PRODUCER 17-Nov-2006 16:07 3302.7 M 3203.3 M

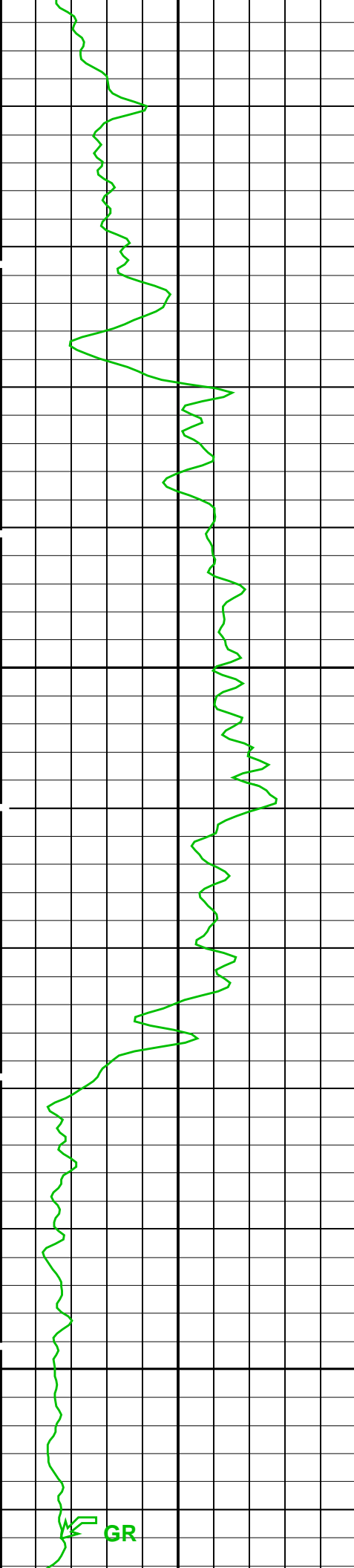
OP System Version: 14C0-302
MCM

SHM_GUN 14C0-302 PGGT-D 14C0-302

PIP SUMMARY

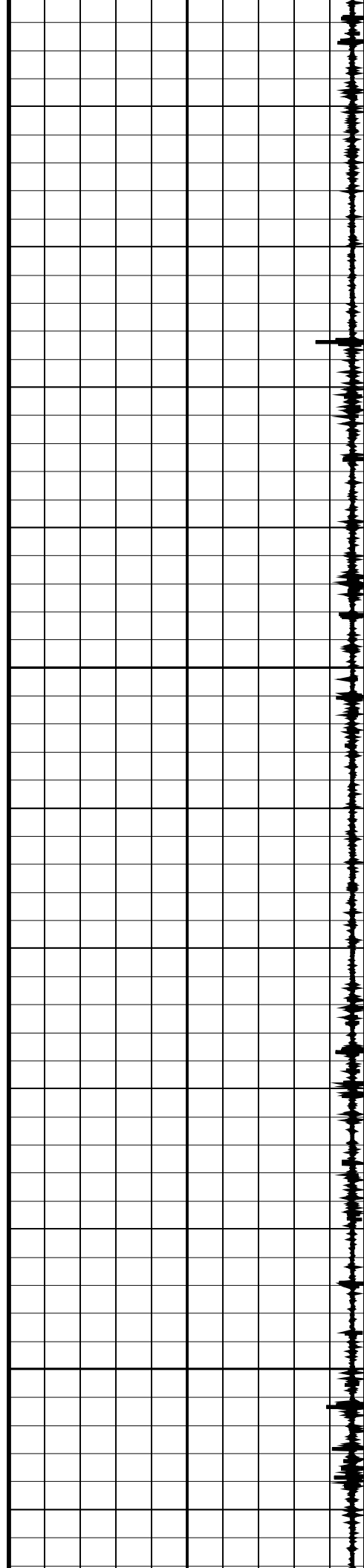
Time Mark Every 60 S





3250

3275



TENS

