

# KOROIT WEST - 1

## COMPOSITE WELL LOG

PERMIT: PEP 152  
BASIN: OTWAY  
STATE: VICTORIA

LOG 2 / 2  
400m-850m

Hole Section	Depth (RT)	Casing	Shoe Depth
17.5"	5.0	14 " Non API	5.0
8.5"	257.0	7 " J55 BTC	257.0

\* All depths are measured depths relative to RT

**LOCATION:**

MGA ZONE 54    EASTING 613 551.5m  
NORTHING 5 762 512.9m

GDA94      LATITUDE 38° 16' 41.762"  
LONGITUDE 142° 17' 53.63"

SEISMIC LINE: OC95-111 SP 745

ELEVATION: GL 40.67m AHD  
RT 42.67m AHD

TOTAL DEPTH: Driller 850 m  
Logger 858 m

STATUS: Plugged and Abandoned

WELLSITE GEOLOGIST: Gordon Wakelin-King

COMPANY SUPERVISION: Wally Westman

WIRELINE LOGGING: Schlumberger

MUDLOGGING: Colin Higgins & Associates

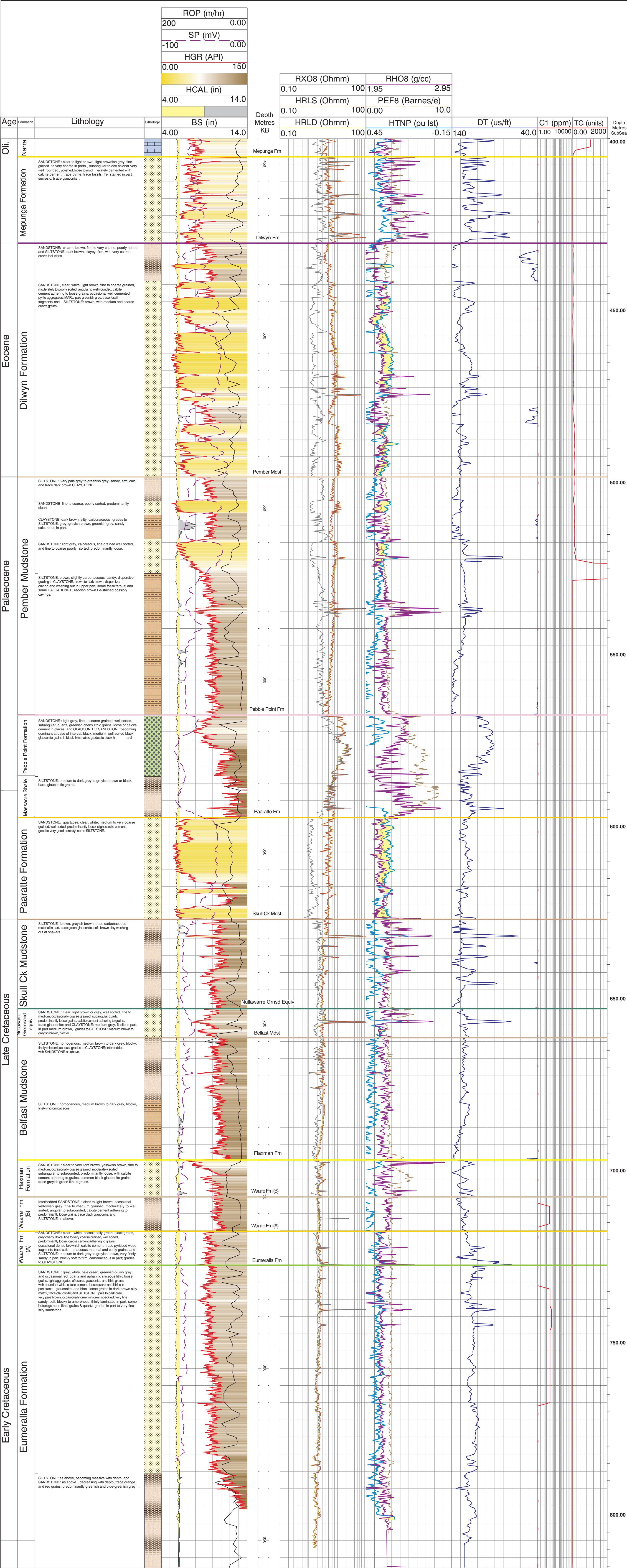
DRILLING CONTRACTORS: Sides Engineering

SPUDDER: 08:30:00 on 16/01/2003

REACHED TD: 13:30:00 on 21/01/2003

ABANDONED: 18:30 on 25/01/2003

DRILL RIG RELEASED: 18:30 on 25/01/2003



Total Depth 858.0m (Logger)