



Company: Esso Australia Pty Ltd.

Well: HLA A2a  
Field: Halibut  
Rig: 453

Country: Australia

453  
Halibut  
Gippsland Basin  
HLA A2a  
Esso Australia Pty Ltd.

Chemical Cutter  
4.5" Tubing  
CCL-L

LOCATION		Elev.:	K.B.	29.32 m
Gippsland Basin		G.L. -73.1 m		
Halibut		D.F. 29.32 m		
Rig 453				
Permanent Datum:	Mean Sea Level			
Log Measured From:	Drill Floor	29.3 m above Perm. Datum		
Drilling Measured From:	Drill Floor			

State: Victoria	Max. Well Deviation 51 deg	Longitude 148 19 17E	Latitude 038 24 22 S
-----------------	-------------------------------	-------------------------	-------------------------

Logging Date	24-Dec-2006		
--------------	-------------	--	--

Run Number	1		
------------	---	--	--

Depth Driller	3464 m		
---------------	--------	--	--

Schlumberger Depth	2245 m Not Tagged		
--------------------	-------------------	--	--

Bottom Log Interval	2210 m		
---------------------	--------	--	--

Top Log Interval	2210 m		
------------------	--------	--	--

Casing Fluid Type	Brine		
-------------------	-------	--	--

Salinity			
----------	--	--	--

Density	8.55 g/cm3		
---------	------------	--	--

Fluid Level	0 m		
-------------	-----	--	--

BIT/CASING/TUBING STRING			
--------------------------	--	--	--

Bit Size	8.500 in		
----------	----------	--	--

From	0 m		
------	-----	--	--

To	3464 m		
----	--------	--	--

Casing/Tubing Size	4.500 in		
--------------------	----------	--	--

Weight	26.4 lbm/ft		
--------	-------------	--	--

Grade	J-55		
-------	------	--	--

From	12.65 m		
------	---------	--	--

To	2322.43 m		
----	-----------	--	--

Maximum Recorded Temperatures			
-------------------------------	--	--	--

Logger On Bottom	24-Dec-2006	Time	7:00
------------------	-------------	------	------

Unit Number	51	Location	AUSL
-------------	----	----------	------

Recorded By	Owen Darby		
-------------	------------	--	--

Witnessed By	Bim Steel		
--------------	-----------	--	--

PVT DATA

Oil Density	Run 1	Run 2	Run 3
Water Salinity			
Gas Gravity			
Bo			
Bw			
1/Bg			
Bubble Point Pressure			
Bubble Point Temperature			
Solution GOR			

Maximum Deviation	51 deg		
-------------------	--------	--	--

CEMENTING DATA

Primary/Squeeze	Primary		
-----------------	---------	--	--

Casing String No			
------------------	--	--	--

Lead Cement Type			
------------------	--	--	--

Volume			
--------	--	--	--

Density			
---------	--	--	--

Water Loss			
------------	--	--	--

Additives			
-----------	--	--	--

Tail Cement Type			
------------------	--	--	--

Volume			
--------	--	--	--

Density			
---------	--	--	--

Water Loss			
------------	--	--	--

Additives			
-----------	--	--	--

Expected Cement Top			
---------------------	--	--	--

Logging Date			
--------------	--	--	--

Run Number			
------------	--	--	--

Depth Driller			
---------------	--	--	--

Schlumberger Depth			
--------------------	--	--	--

Bottom Log Interval			
---------------------	--	--	--

Top Log Interval			
------------------	--	--	--

Casing Fluid Type			
-------------------	--	--	--

Salinity			
----------	--	--	--

Density			
---------	--	--	--

Fluid Level			
-------------	--	--	--

BIT/CASING/TUBING STRING			
--------------------------	--	--	--

Bit Size			
----------	--	--	--

From			
------	--	--	--

To			
----	--	--	--

Casing/Tubing Size			
--------------------	--	--	--

Weight			
--------	--	--	--

Grade			
-------	--	--	--

From			
------	--	--	--

To			
----	--	--	--

Maximum Recorded Temperatures			
-------------------------------	--	--	--

Logger On Bottom		Time	
------------------	--	------	--

Unit Number		Location	
-------------	--	----------	--

Recorded By			
-------------	--	--	--

Witnessed By			
--------------	--	--	--

## DEPTH SUMMARY LISTING

Date Created: 21-OCT-2006 14:53:23

## Depth System Equipment

Depth Measuring Device		Tension Device		Logging Cable	
Type:	IDW-H	Type:	CMTD-B/A	Type:	7-46V-XS
Serial Number:	796	Serial Number:	1721	Serial Number:	76075
Calibration Date:	06-Sep-2006	Calibration Date:	21-Dec-2006	Length:	5999.07 M
Calibrator Serial Number:	1009	Calibrator Serial Number:	1051	Conveyance Method: Wireline Rig Type: Offshore_Fixed	
Calibration Cable Type:	7-46ZV-XS	Calibration Gain:	0.95		
Wheel Correction 1:	2	Calibration Offset:	524.00		
Wheel Correction 2:	2				

## Depth Control Parameters

Log Sequence:	Subsequent Trip To the Well
Reference Log Name:	Well Completion Equipment
Reference Log Run Number:	N/A
Reference Log Date:	24-Nov-1999
Subsequent Trip Down Log Correction:	2.00 M















## Depth Control Remarks

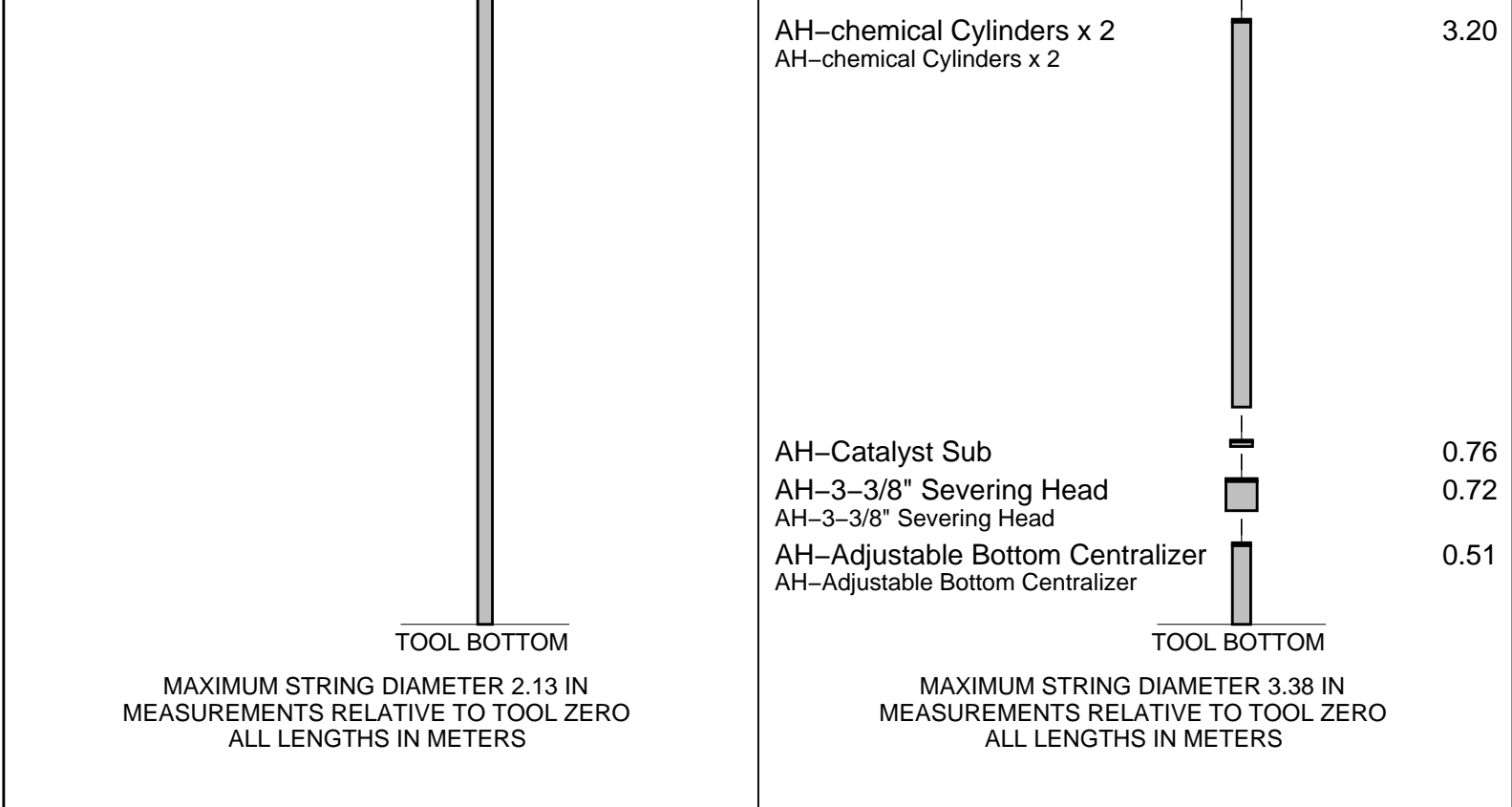
1. Correlated to well completion tally provided by client
2. Used IDW as primary depth control
3. Used Z-Chart as secondary depth control
4.
5.
6.

## DISCLAIMER

THE USE OF AND RELIANCE UPON THIS RECORDED-DATA BY THE HEREIN NAMED COMPANY (AND ANY OF ITS AFFILIATES, PARTNERS, REPRESENTATIVES, AGENTS, CONSULTANTS AND EMPLOYEES) IS SUBJECT TO THE TERMS AND CONDITIONS AGREED UPON BETWEEN SCHLUMBERGER AND THE COMPANY, INCLUDING: (a) RESTRICTIONS ON USE OF THE RECORDED-DATA; (b) DISCLAIMERS AND WAIVERS OF WARRANTIES AND REPRESENTATIONS REGARDING COMPANY'S USE OF AND RELIANCE UPON THE RECORDED-DATA; AND (c) CUSTOMER'S FULL AND SOLE RESPONSIBILITY FOR ANY INFERENCE DRAWN OR DECISION MADE IN CONNECTION WITH THE USE OF THIS RECORDED-DATA.

OTHER SERVICES1	OTHER SERVICES2
OS1: None	OS1:
OS2:	OS2:
OS3:	OS3:
OS4:	OS4:
OS5:	OS5:
REMARKS: RUN NUMBER 1	REMARKS: RUN NUMBER 2
Correlated to tubing tally provided by client	
Objective: Rig up, RIH 1-11/16" String shot assembly with	
3.0m of prima cord to cover the interval (2270.1m to 2210.0m MDKB).	
To clear away any excess scale from the tubing walls where the anchor	
body and severing head of the chemical cutter will be initiated, POOH.	
RIH with 3-3/8" chemical cutter correlate on depth with well completion	
tally and cut 4.5" tubing at 2210.0m MDKB. POOH rig down	

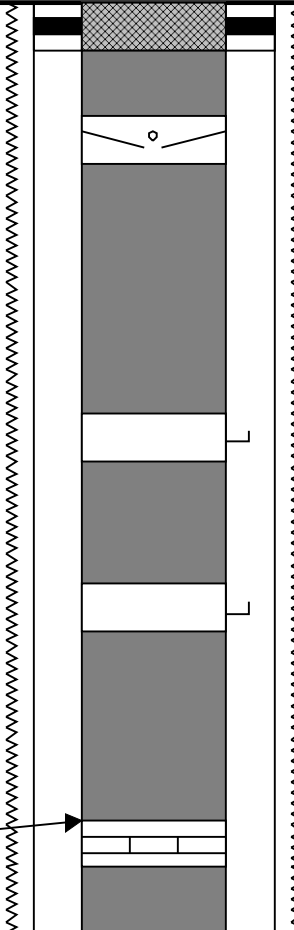
daily and cut 4.5" tubing at 2210.0m MDKB, POOH rig down.					
CCL to string shot top = 1.1m					
CCL to string shot bottom = 4.7m					
CCL to severing head = 3.7m					
Schlumberger Crew:					
Operators = Rick Murray & Gary Martin (Days)					
Nathan Simmons & Kevin Kerr (Nights)					
Specialist= Owen Darby					
RUN 1			RUN 2		
SERVICE ORDER #:		40000466	SERVICE ORDER #:		
PROGRAM VERSION:		14C0-302	PROGRAM VERSION:		
FLUID LEVEL:		0 m	FLUID LEVEL:		
LOGGED INTERVAL	START	STOP	LOGGED INTERVAL	START	STOP
EQUIPMENT DESCRIPTION					
RUN 1			RUN 2		
SURFACE EQUIPMENT			SURFACE EQUIPMENT		
WITM			WITM		
DOWNHOLE EQUIPMENT			DOWNHOLE EQUIPMENT		
MH-22 MH-22 1		11.14	MH-22 MH-22 1		8.65
EQF-43 EQF-43 2749		10.66	EQF-43 EQF-43 2749		8.17
EQF-46 EQF-46 3001		8.83	EQF-46 EQF-46 3001		6.34
CCL-L CCL-L 4305		7.00	CCL-L CCL-L 4305		4.52
AH-ESIC-DA AH-ESIC-DA 1406263		6.54	CCL-L CCL-L 4305		4.52
SHM_GUN GUN-String Shot		6.10	AH-Firing Sub Adapter		4.06
			AH-Gas Generator Sub AH-Gas Generator Sub		3.94
			AH-3-3/8" Upper Anchor Body AH-3-3/8" Upper Anchor Body		3.59

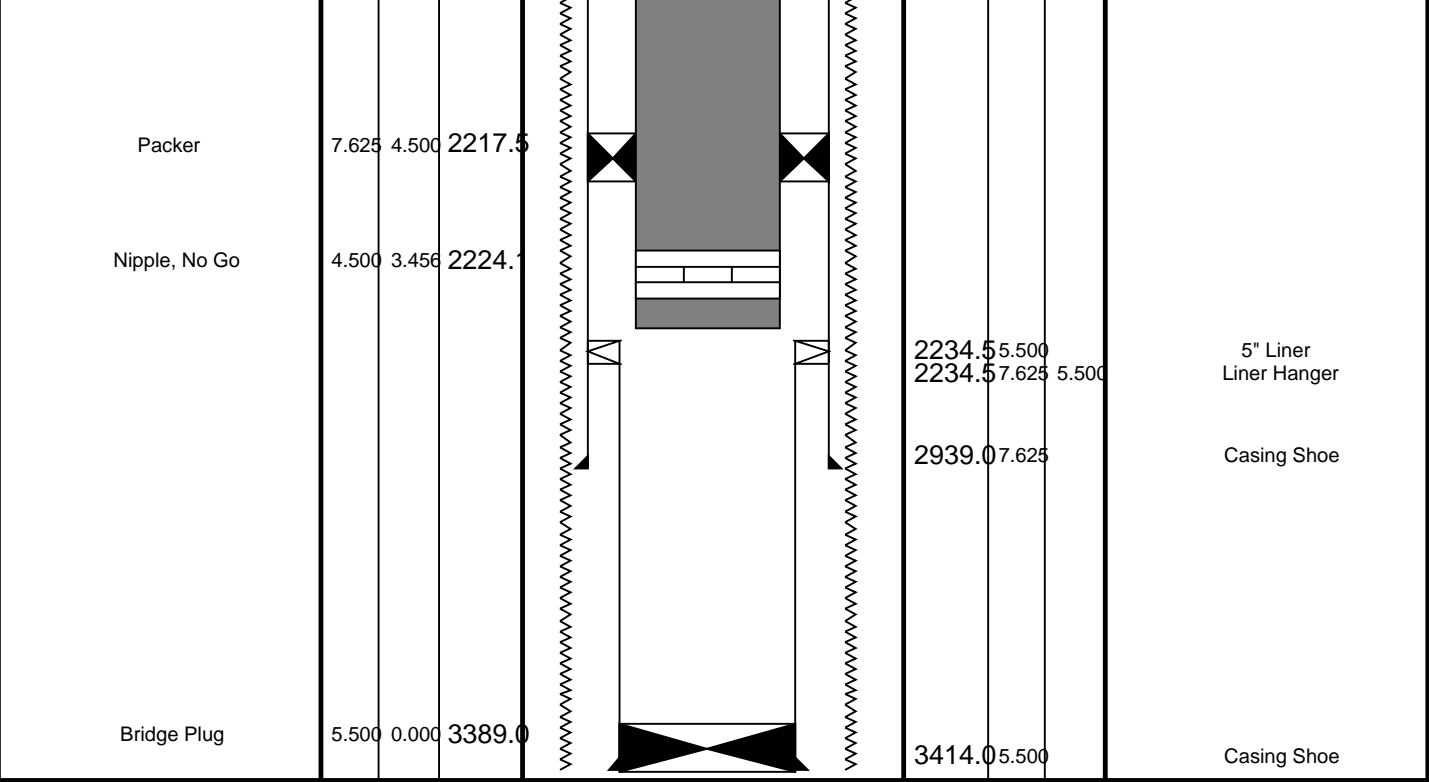


Client: Esso Australia Pty Ltd  
 Well: HLA A2a  
 Field: Gippsland Basin  
 State: Victoria

10/21/2006

Rig Name: 453  
 Elevation: 29.3 m

Production String			Well Schematic	Casing String		
	(in) OD	(m) ID MD		(m) MD	(in) OD ID	
Tubing Hanger Tubing	7.625 4.500	4.500 0.0 12.6		0.0	9.000 7.625	Casing String Borehole Segment
Sub Surface Safety Valve	4.500	132.4				
Gas Lift Mandrel	4.500	756.6				
Gas Lift Mandrel	4.500	1114.0				
Landing Nipple, Minimum ID	4.500	3.688				
		1132.3				

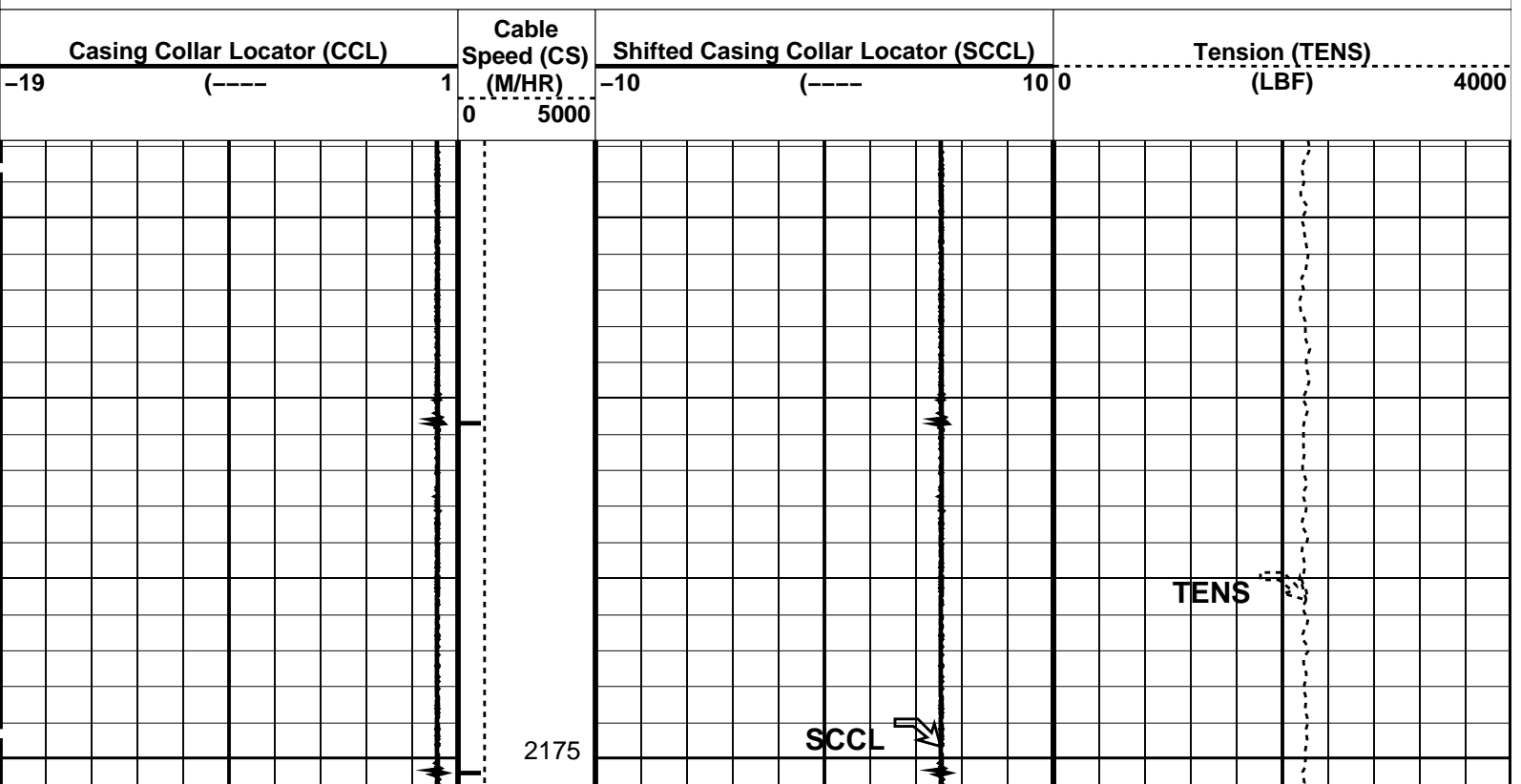


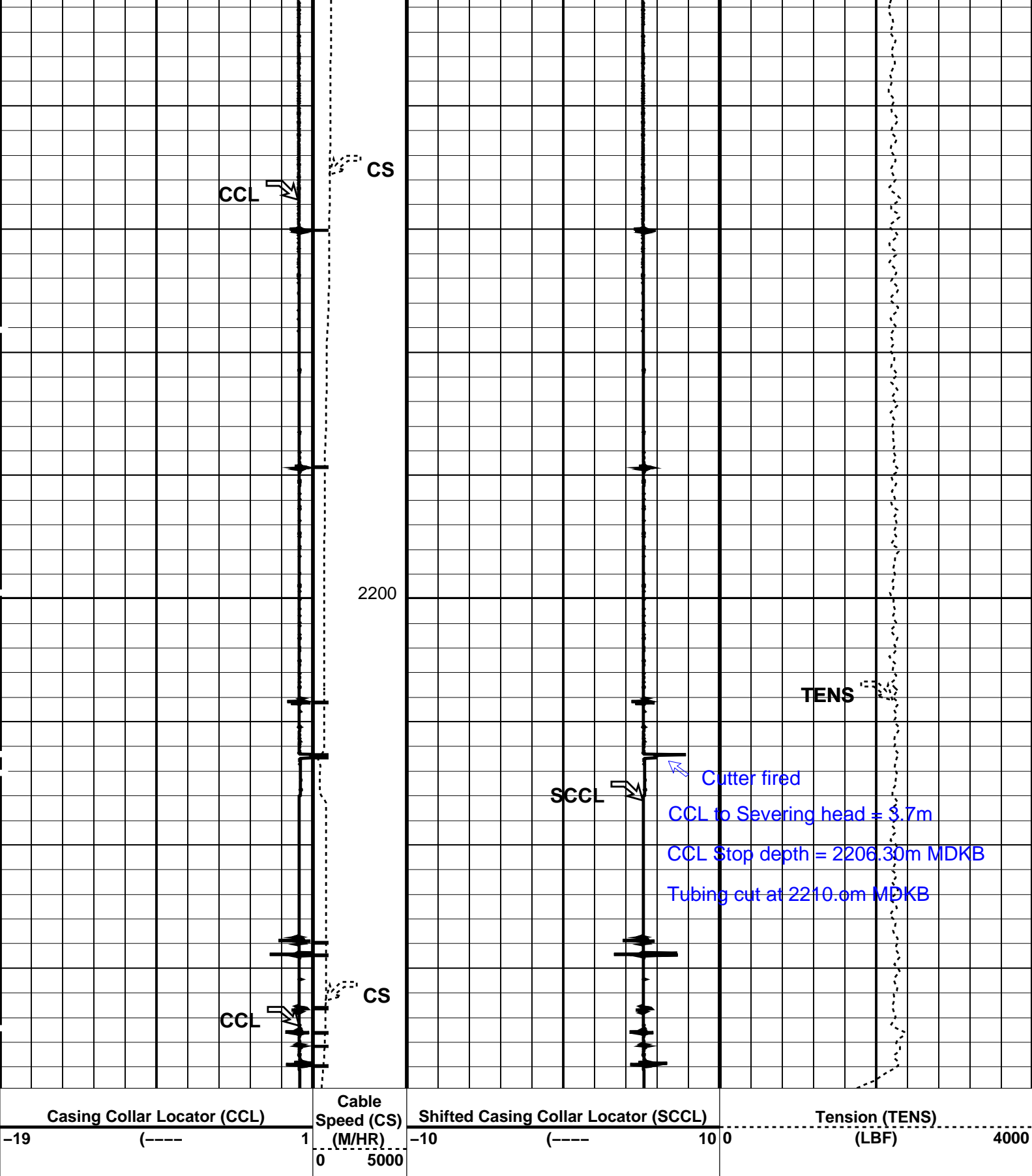
Job Events Summary

MAXIS Field Log

Schlumberger Job Event Summary

Time	Elapsed Time	Depth (M)	File
Simulated Log	20-Oct-2006 13:50	000:04	PERFO_006LUP
OP checked tool string			
Rig Up Started	24-Oct-2006 2:30		
Simulated Log	24-Oct-2006 3:56	000:10	PERFO_013LUP
Hot check for string shot			
Log Pass (up)	24-Oct-2006 7:21	000:06	2245.0 - 2188.0 PERFO_024LUP
Correlation pass for string shot			
Log Pass (up)	24-Oct-2006 7:32	000:08	2242.0 - 2192.1 PERFO_025LUP
Shoting pass for string shot			
Log Pass (up)	24-Oct-2006 9:31	000:07	2212.2 - 2173.7 PERFO_029LUP
Correlation pass for CHC			
Log Pass (up)	24-Oct-2006 9:39	000:07	2219.9 - 2152.8 PERFO_030LUP
Cutting pass			
Log Pass (up)	24-Oct-2006 9:49	000:14	2219.9 - 2157.8 PERFO_031LUP
Rig Down Completed	24-Oct-2006 11:30		





#### PIP SUMMARY

└─ Casing Collars

Time Mark Every 60 S

#### Parameters

DLIS Name	Description	Value
CCLD	CCL-L: Casing Collar Locator CCL reset delay	12 IN



CCLT

CCL Detection Level

0.3 V

Format: PERFO

Vertical Scale: 1:200

Graphics File Created: 24-Oct-2006 09:49

OP System Version: 14C0-302

MCM

SHM\_GUN14C0-302CCL-L14C0-302

Output DLIS Files

DEFAULTPERFO\_031LUPFN:30PRODUCER24-Oct-2006 09:49

Schlumberger

3-3/8" Chemical Cutter  
Correlation Pass

MAXIS Field Log

Company: Esso Australia Pty Ltd.

Well: HLA A2a

Input DLIS Files

DEFAULTPERFO\_030LUPFN:29PRODUCER24-Oct-2006 09:392219.9 M2152.8 M

Output DLIS Files

DEFAULTPERFO\_032PUPFN:31PRODUCER24-Oct-2006 10:092219.9 M2153.3 M

OP System Version: 14C0-302

MCM

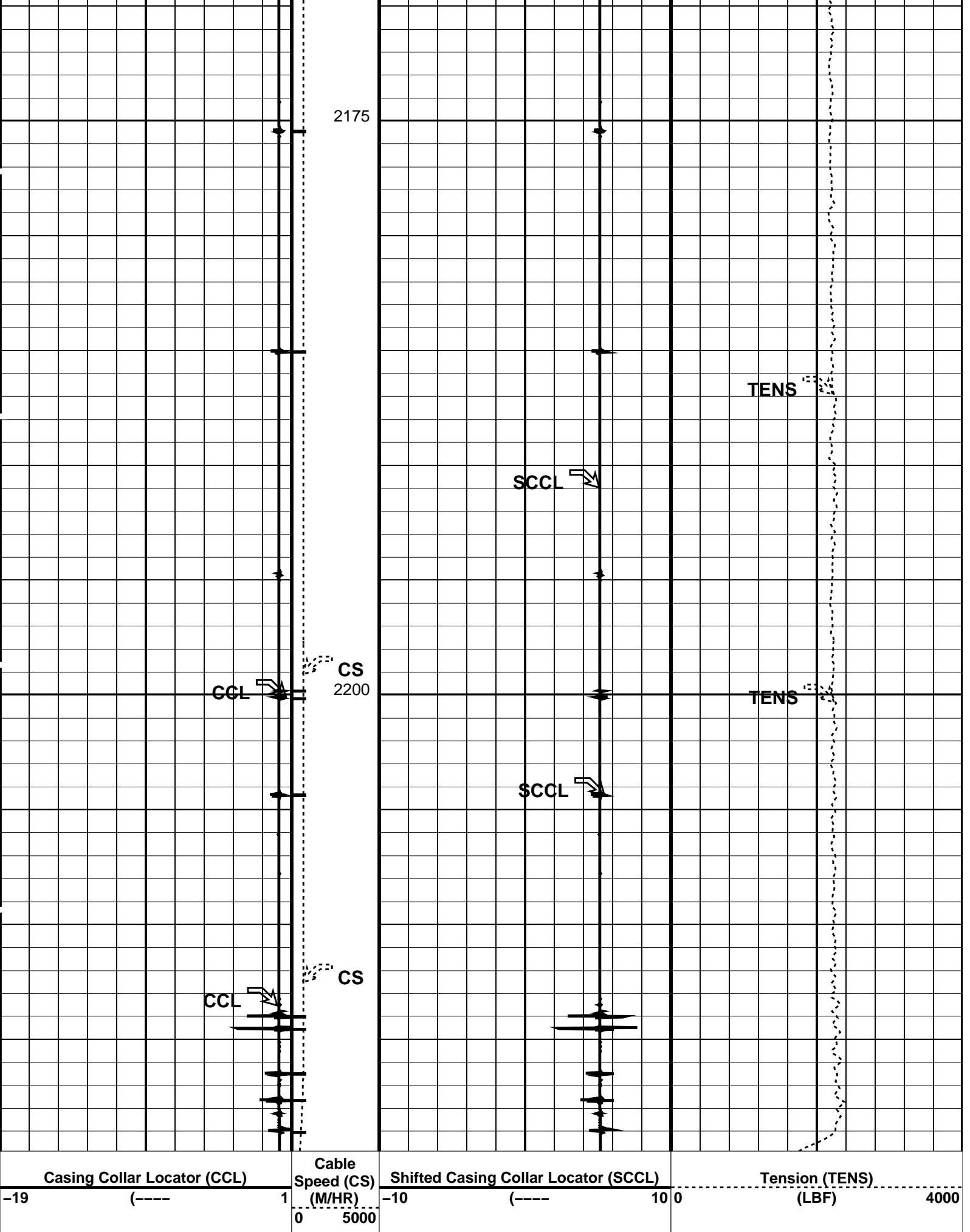
SHM\_GUN14C0-302CCL-L14C0-302

PIP SUMMARY

Time Mark Every 60 S

Casing Collars

Casing Collar Locator (CCL)	Cable Speed (CS) (M/HR)	Shifted Casing Collar Locator (SCCL)	Tension (TENS) (LBF)
-19-----1	05000	-10-----100	04000
<div>CCL</div>	<div>CS</div>	<div>SCCL</div>	<div>TENS</div>



PIP SUMMARY

└─ Casing Collars

Parameters			
DLIS Name		Description	Value
CCLD CCLT	CCL-L: Casing Collar Locator		
	CCL reset delay		12 IN
	CCL Detection Level		0.3 V
System and Miscellaneous			
DO	Depth Offset for Playback		0.0 M
PP	Playback Processing		NORMAL

Format: PERFO    Vertical Scale: 1:200    Graphics File Created: 24-Oct-2006 10:09

OP System Version: 14C0-302			
MCM			
SHM_GUN	14C0-302	CCL-L	14C0-302

Input DLIS Files					
DEFAULT	PERFO_030LUP	FN:29	PRODUCER	24-Oct-2006 09:39	2219.9 M    2152.8 M
Output DLIS Files					
DEFAULT	PERFO_032PUP	FN:31	PRODUCER	24-Oct-2006 10:09	



String Shot  
Shooting Pass

MAXIS Field Log

PERFO2 Operational Summary Listing

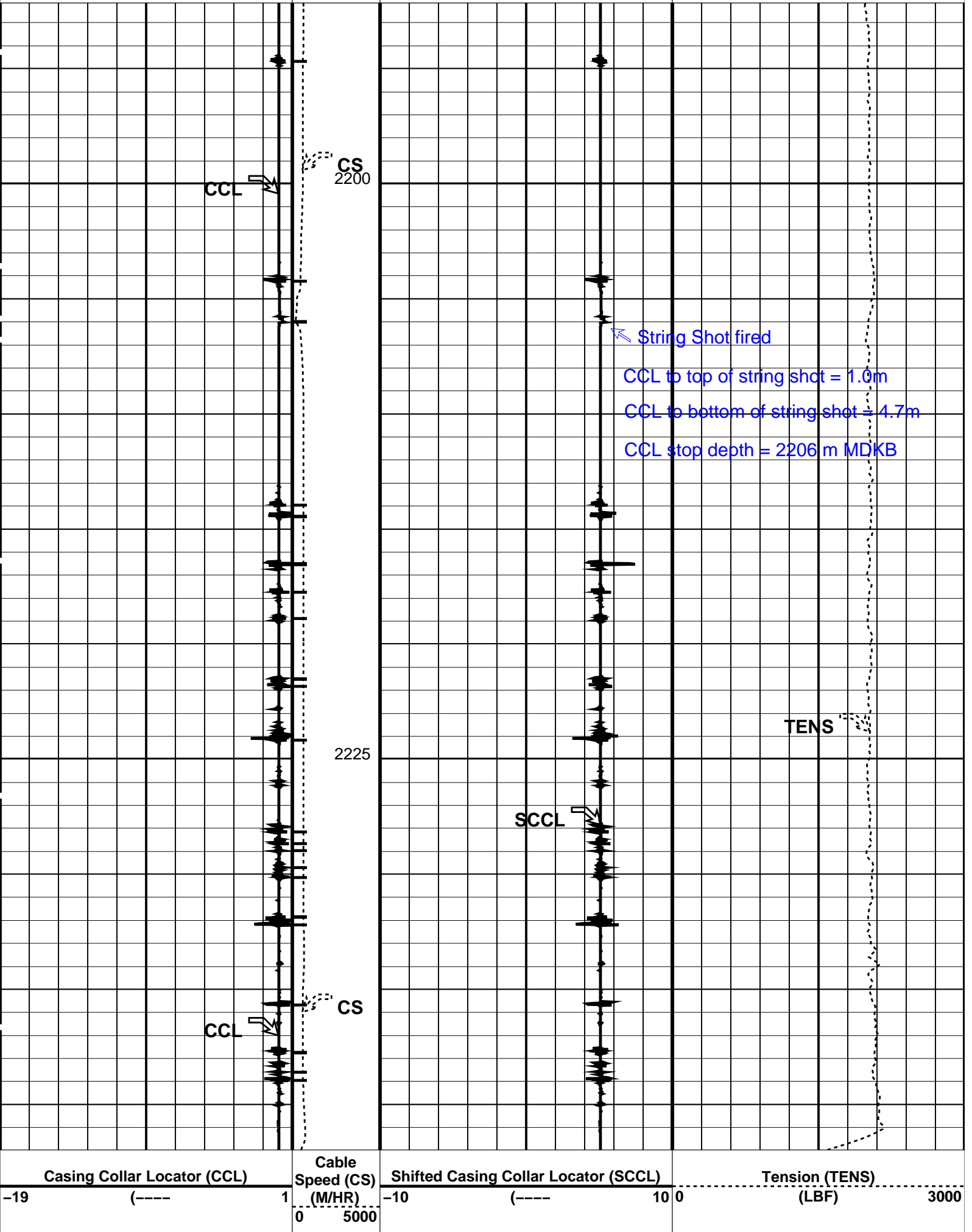
Device	Status	Req Depth ( M )	Obs Depth ( M )	Time Used
GUN1	Used	2207.1	2207.1	Tue Oct 24 07:38:42 2006

Company: Esso Australia Pty Ltd.    Well: HLA A2a

Output DLIS Files						
DEFAULT	PERFO_025LUP	FN:24	PRODUCER	24-Oct-2006 07:32	2242.0 M	2192.1 M
OP System Version: 14C0-302						
MCM						
SAFE	14C0-302	SHM_GUN	14C0-302			
CCL-L	14C0-302					

PIP SUMMARY			
└─ Casing Collars			

Casing Collar Locator (CCL)		Cable Speed (CS)	Shifted Casing Collar Locator (SCCL)		Tension (TENS)	
-19	(----	1	-10	(----	10 0	3000
		(M/HR)			(LBF)	
		0 5000				



## Parameters

DLIS Name	Description	Value
CCL-L: Casing Collar Locator		
CCLD	CCL reset delay	12
CCLT	CCL Detection Level	0.3

**Format: PERFO      Vertical Scale: 1:200**

**Graphics File Created: 24-Oct-2006 07:32**

**OP System Version: 14C0-302**

## MCM

SAFE	14C0-302	SHM_GUN	14C0-302
CCL-L	14C0-302		

## Output DLIS Files

DEFAULT	PERFO_025LUP	FN:24	PRODUCER	24-Oct-2006 07:32
---------	--------------	-------	----------	-------------------

# Schlumberger

## String Shot Correlation Pass

MAXIS Field Log

**Company: Esso Australia Pty Ltd.**

Well: HLA A2a

## Output DLIS Files

DEFAULT	PERFO_024LUP	FN:23	PRODUCER	24-Oct-2006 07:21	2245.0 M	2188.0 M
---------	--------------	-------	----------	-------------------	----------	----------

**OP System Version: 14C0-302**

## MCM

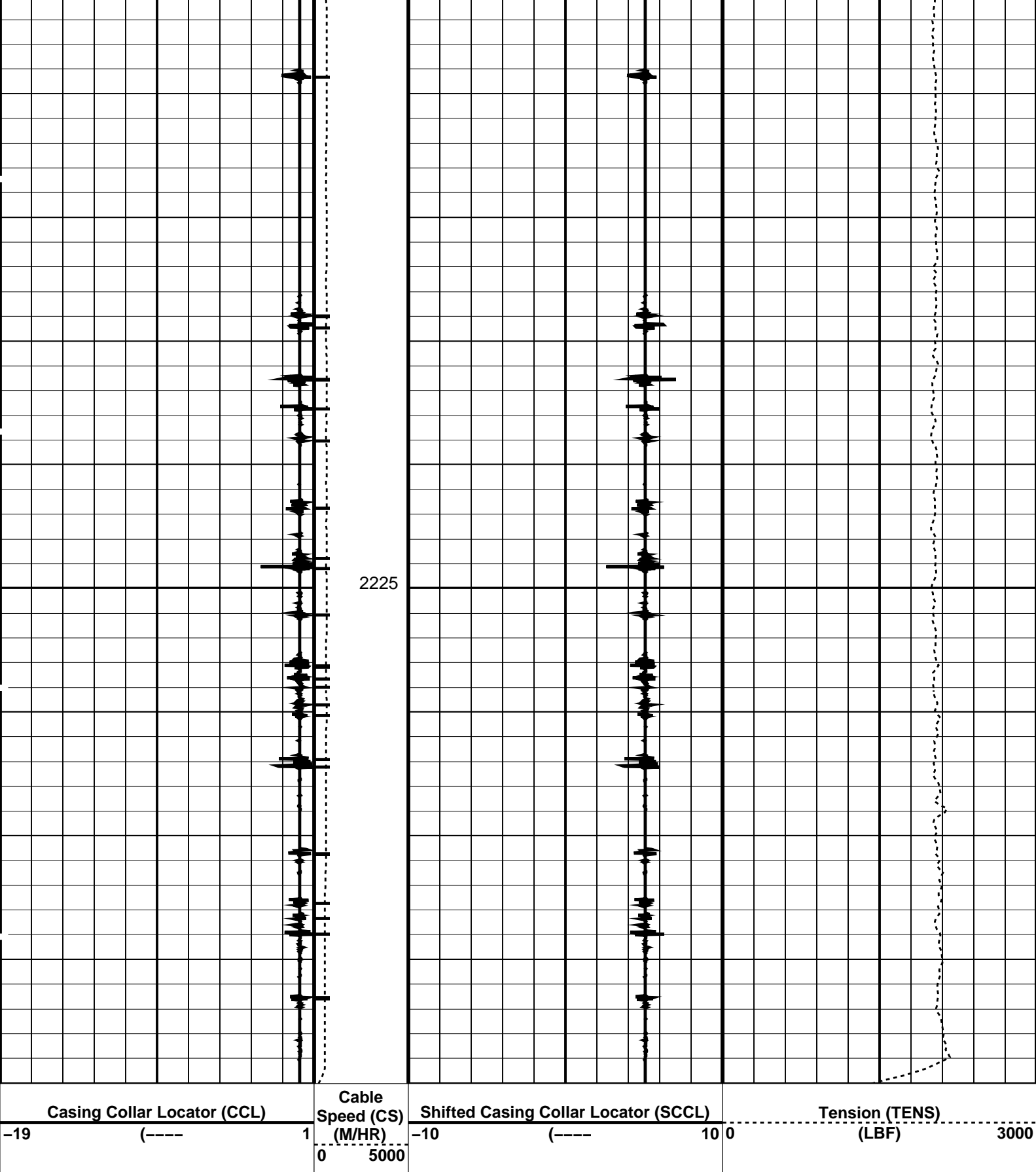
SAFE	14C0-302	SHM_GUN	14C0-302
CCL-L	14C0-302		

## PIP SUMMARY

## └ Casing Collars

**Time Mark Every 60 S**

[illegible]



PIP SUMMARY

Time Mark Every 60 S

Casing Collars

Parameters		
DLIS Name	Description	Value
CCLD	CCL-L: Casing Collar Locator	
CCLT	CCL reset delay	12 IN
CCLL	CCL Detection Level	0.3 V

CCL	CCL Detection Level	0.3	V
Format: PERFO	Vertical Scale: 1:200	Graphics File Created: 24-Oct-2006 07:21	
OP System Version: 14C0-302			
MCM			
SAFE	14C0-302	SHM_GUN	14C0-302
CCL-L	14C0-302		
Output DLIS Files			
DEFAULT	PERFO_024LUP	FN:23	PRODUCER 24-Oct-2006 07:21

Company: **Esso Australia Pty Ltd.**

**Schlumberger**

Well: **HLA A2a**

Field: **Halibut**

Rig: **453**

Country: **Australia**

Chemical Cutter  
4.5" Tubing  
CCL-L