

Company: Esso Australia Pty Ltd

Well: WTN W-8a

Field: Tuna

Rig: Prod 2/ISS Rig 22

Country: Australia

RST-C Sigma

Pressure-Temperature

GR-CCL

Rig: Prod 2/ISS Rig 22

Field: Tuna

Location: Bass Strait

Well: WTN W-8a

Company: Esso Australia Pty Ltd

LOCATION

Bass Strait

Gippsland

Basin

Elev.: K.B. 34.7 m

G.L. -61 m

D.F. 34.7 m

Permanent Datum: _____

Log Measured From: _____

Drilling Measured From: _____

Mean Sea Level _____

Kelly Bushing _____

Kelly Bushing _____

Elev.: 0 m _____

34.7 m above Perm. Datum

State: Victoria

Max. Well Deviation 63 deg

Longitude 148.3022 E

Latitude 38.1986 S

PVT DATA				Run 1	Run 2	
Oil Density						
Water Salinity						
Gas Gravity						
Bo						
Bw						
1/Bg						
Bubble Point Pressure						
Bubble Point Temperature						
Solution GOR						
Maximum Deviation	63 deg					
CEMENTING DATA						
Primary/Squeeze	Primary					
Casing String No						
Lead Cement Type						
Volume						
Density						
Water Loss						
Additives						
Tail Cement Type						
Volume						
Density						
Water Loss						
Additives						
Expected Cement Top						

Logging Date7-Dec-2006

Run Number2

Depth Driller3507 m

Schlumberger DepthNot Tagged

Bottom Log Interval2178 m

Top Log Interval2128 m

Casing Fluid TypeBrine

Salinity

Density1.05 g/cm3

Fluid Level0 m

BIT/CASING/TUBING STRING

Bit Size8.500 in

From61 m

To3558 m

Casing/Tubing Size7.000 in

Weight26 lbm/ft

GradeL-80

From0 m

To3583 m

Maximum Recorded Temperatures71 degC

Logger On Bottom7-Dec-2006

Unit Number3827

LocationAUSL

Recorded ByJ.Hogan, A. Sword, C.Rowand

Witnessed ByBruce Woodward, Mark Wilson

Logging Date						
Run Number						
Depth Driller						
Schlumberger Depth						
Bottom Log Interval						
Top Log Interval						
Casing Fluid Type						
Salinity						
Density						
Fluid Level						
BIT/CASING/TUBING STRING						
Bit Size						
From						
To						
Casing/Tubing Size						
Weight						
Grade						
From						
To						
Maximum Recorded Temperatures						
Logger On Bottom						
Unit Number						
Location						
Recorded By						
Witnessed By						

Date Created: 6-DEC-2006 17:45:45

Logging Cable

Type:	7-46V-XS
Serial Number:	73383
Length:	4810.05 M
<hr/>	
Conveyance Method:	Wireline
Rig Type:	Offshore Fixed

Log Sequence:	Subsequent Trip To the Well
Reference Log Name:	Solar Composite
Reference Log Run Number:	
Reference Log Date:	13-Jul-2005
Subsequent Trip Down Log Correction:	-4.00 M

1. Schlumberger Depth Control Policy Followed
- 2.
- 3.
- 4.
- 5.
- 6.

THE USE OF AND RELIANCE UPON THIS RECORDED-DATA BY THE HEREIN NAMED COMPANY (AND ANY OF ITS AFFILIATES, PARTNERS, REPRESENTATIVES, AGENTS, CONSULTANTS AND EMPLOYEES) IS SUBJECT TO THE TERMS AND CONDITIONS AGREED UPON BETWEEN SCHLUMBERGER AND THE COMPANY, INCLUDING: (a) RESTRICTIONS ON USE OF THE RECORDED-DATA; (b) DISCLAIMERS AND WAIVERS OF WARRANTIES AND REPRESENTATIONS REGARDING COMPANY'S USE OF AND RELIANCE UPON THE RECORDED-DATA; AND (c) CUSTOMER'S FULL AND SOLE RESPONSIBILITY FOR ANY INFERENCE DRAWN OR DECISION MADE IN CONNECTION WITH THE USE OF THIS RECORDED-DATA.

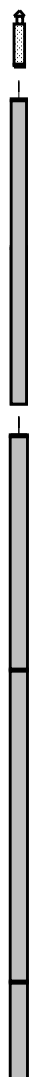
OTHER SERVICES2
OS1:
OS2:
OS3:
OS4:
OS5:

REMARKS: RUN NUMBER 2

Logged GB baseline with no minitron activation

Logged CR baseline with no monitor activation.					
Schlumberger Crew:					
Days: D Stuckey(crew cheif), S Kiss					
Nights: B Flynn, G Brady.					
Performed by Schlumberger					
RUN 1			RUN 2		
SERVICE ORDER #:	40000463		SERVICE ORDER #:		
PROGRAM VERSION:	14C0-302		PROGRAM VERSION:		
FLUID LEVEL:	0 m		FLUID LEVEL:		
LOGGED INTERVAL	START	STOP	LOGGED INTERVAL	START	STOP

EQUIPMENT DESCRIPTION

RUN 1	RUN 2
<p style="text-align: center;">SURFACE EQUIPMENT</p> <p>WITM-A PSC_16MHZ</p>	
<p style="text-align: center;">DOWNHOLE EQUIPMENT</p> <div style="display: flex; justify-content: space-between; align-items: flex-start;"> <div style="width: 45%;"> <p>MH-22 Detail MT 13.68</p> <p>MH-22 TelStatus</p> <p>PSPT-A/B CTEM 13.20</p> <p>PSC-A 13.20</p> <p>PSPT-B 1747</p> <p>PSTC</p> <p>PBMS-B GR 12.07</p> <p>CQG_F_Mano</p> <p>RTD_Thermometer</p> <p>GR</p> <p>CCL Well_Temp 11.14</p> <p>PBMS CQG Manom 11.03</p> <p> CCL 10.90</p> <p> PBMS PSTC 10.68</p> <p>RST-C 10.68</p> <p>RSCH-A 45</p> <p>RSC-C</p> <p>RSS-A 45</p> <p>RSXH-A 63</p> <p>RSX-C</p> <p>RSC-A Far 7.90</p> <p>RSC-A PNG</p> <p>RSC-A Nea</p> <p>RSX-A PNG 7.74</p> </div>  </div>	

EQF-43
EQF-43

3.66

EQF-43
EQF-43

1.83

Tension HV 0.00
TOOL ZERO

MAXIMUM STRING DIAMETER 1.72 IN
MEASUREMENTS RELATIVE TO TOOL ZERO
ALL LENGTHS IN METERS

Client: Esso Australia Pty Ltd.

Well: WTN W-8a

Field: Tuna

State: Victoria

Country: Australia

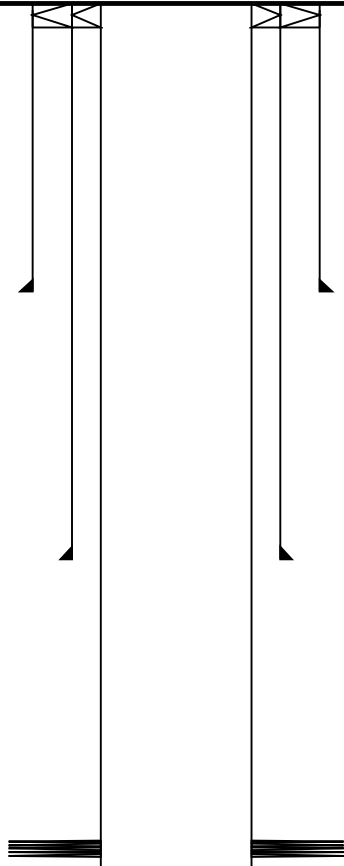
Rig Name: Prod 2/ISS Rig 22

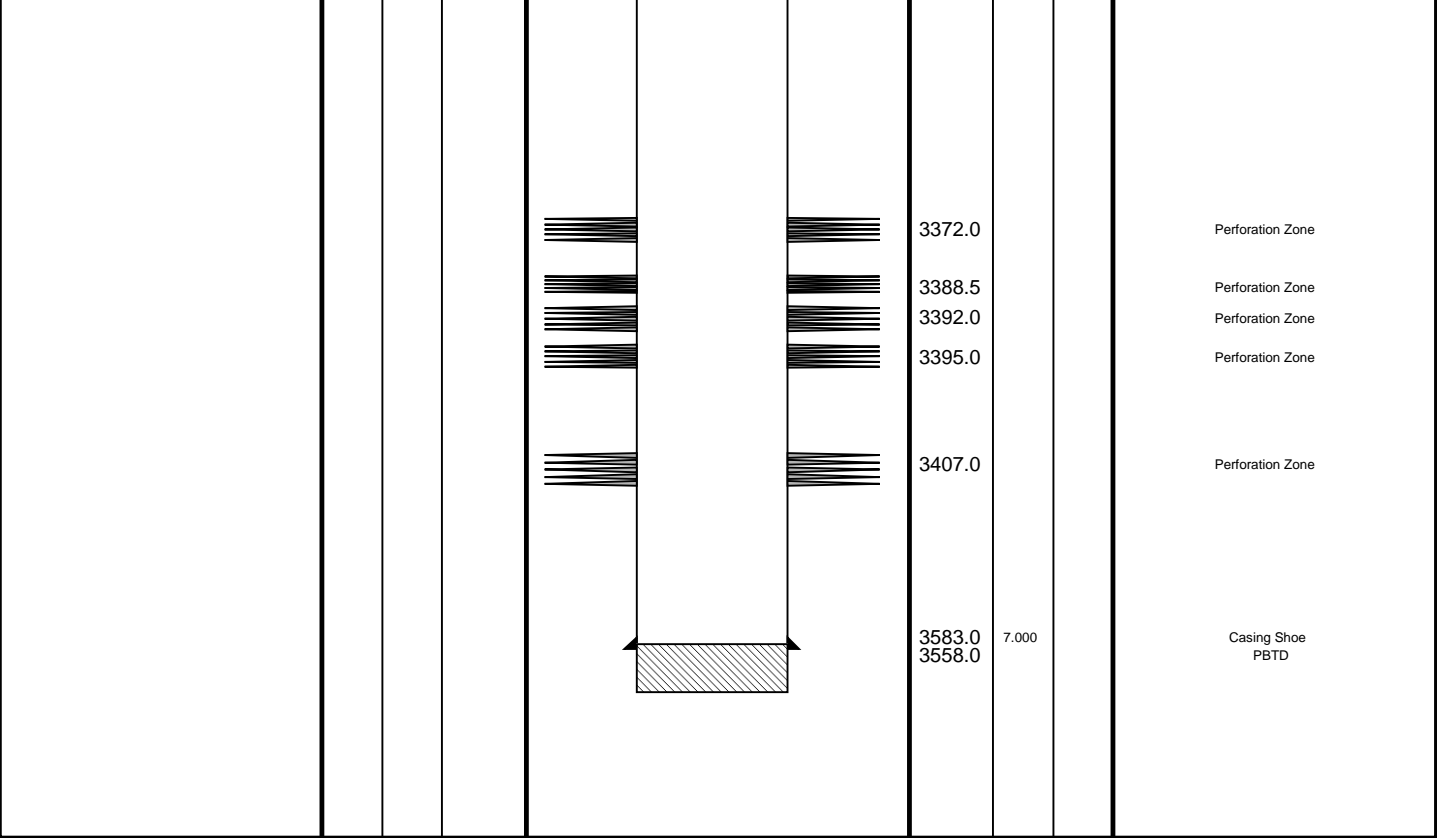
Reference Datum: Kelly Bushing

Elevation: 34.7 m

Drawing Date: 12/7/2006

API #:

Production String	(in)		(m)	Well Schematic		(m)	(in)		Casing String
	OD	ID	MD			MD	OD	ID	
						17.0	13.375 13.375	9.675	Casing String Liner Hanger
						678.0	13.375		Casing Shoe
						1306.0	9.675		Casing Shoe
						2160.4			Perforation Zone



Schlumberger

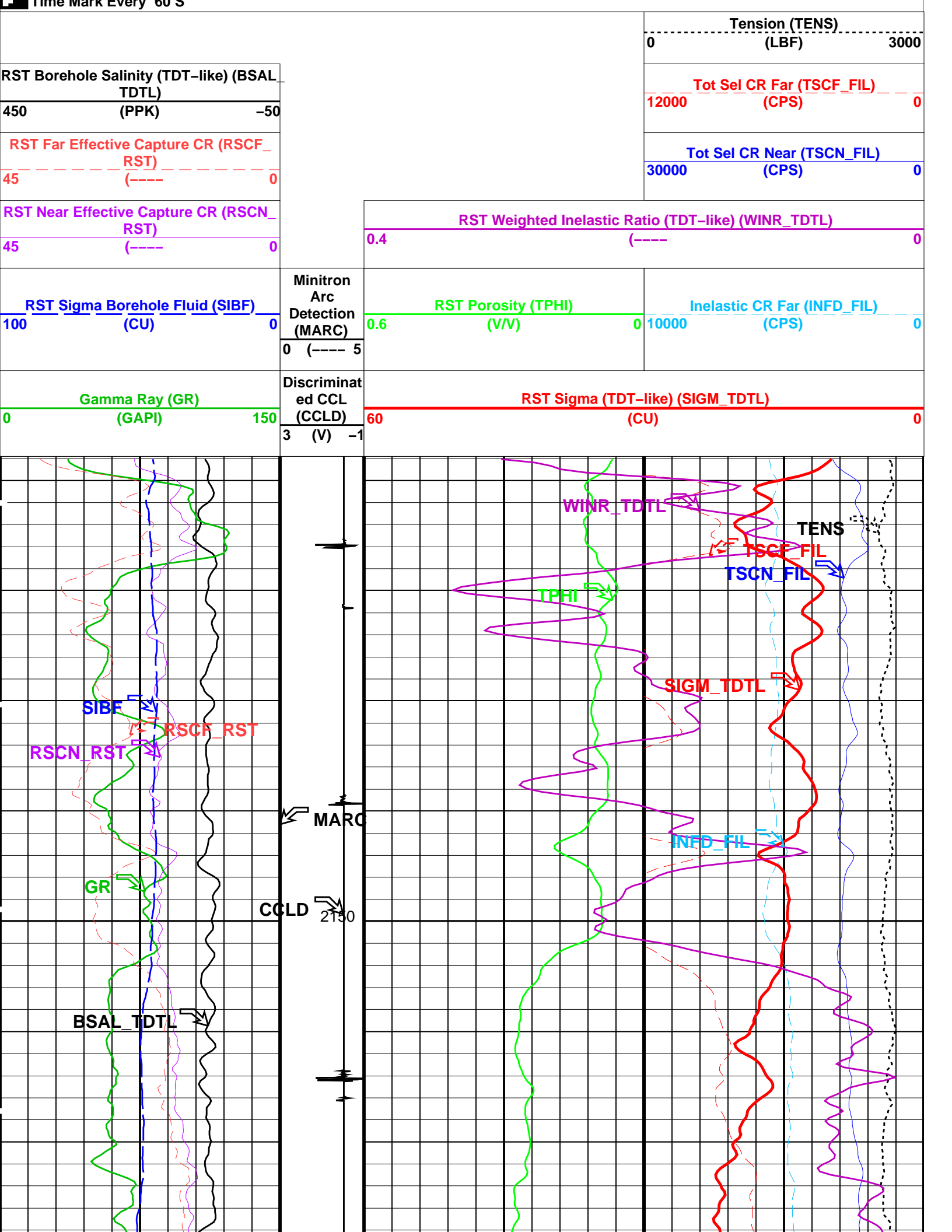
**RST TDT Answers
Pass Two**

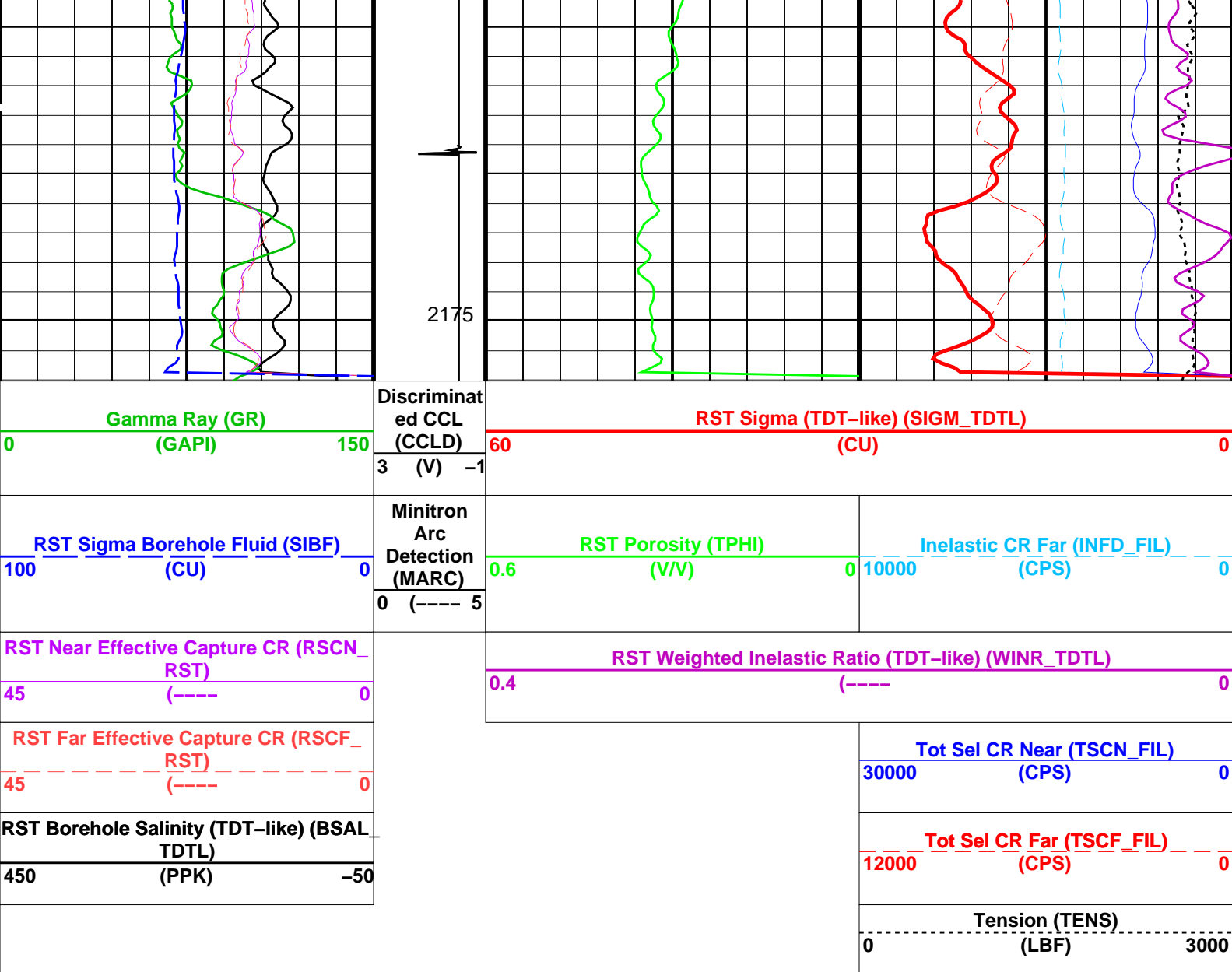
MAXIS Field Log

Company: Esso Australia Pty Ltd Well: WTN W-8a

Input DLIS Files						
DEFAULT	RST_PSP_028PUP	FN:38	PRODUCER	07-Dec-2006 05:22	2177.0 M	2128.4 M
Output DLIS Files						
DEFAULT	RST_PSP_034PUP	FN:44	PRODUCER	07-Dec-2006 13:17	2177.0 M	2128.9 M

OP System Version: 14C0-302						
MCM						
RST-C	PTC-3043-NUCL	PSPT-A/B		14C0-302		



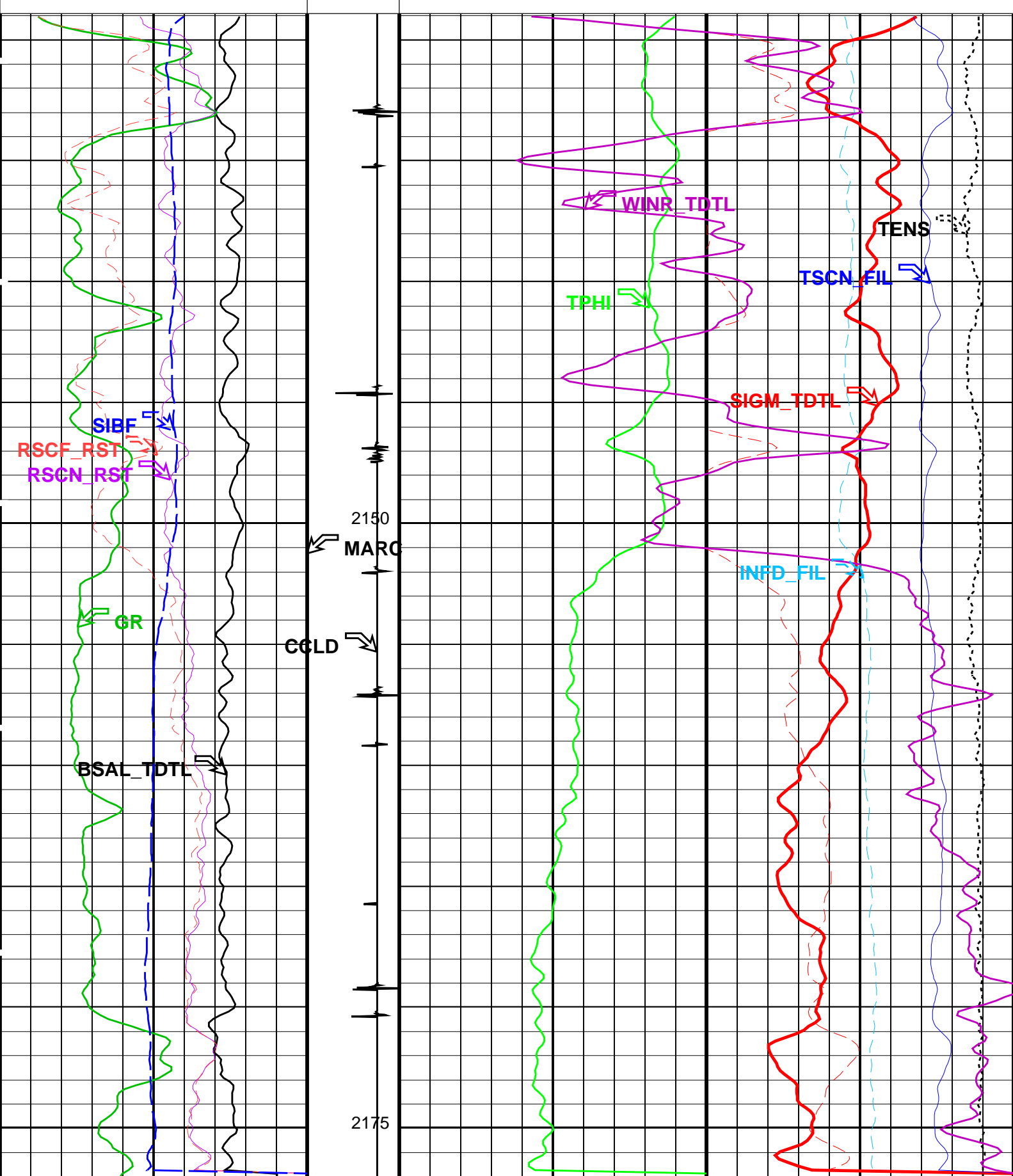


PIP SUMMARY

Time Mark Every 60 S

Parameters

DLIS Name	Description	Value
RST-C: Reservoir Saturation Pro Tool C		
AIRB	RST Air Borehole	No
BHS	Borehole Status	CASED
BSALOPT	RST Borehole Salinity Option	Unknown
BSFL	RST Borehole Salinity Filter Length	51
DFPC	RST Depth Filter Processing Constant	One
DFPC_TDTL	RST Depth Filter Processing Constant (TDT-like)	Two
MATR	Rock Matrix for Neutron Porosity Corrections	SANDSTONE
NORM_IRAT_RST	RST Normalized Inelastic Ratio	0.48
NORM_SIGM_RST	RST Normalized Sigma	30 CU
RGAI	Near/Far Gain Calibration Ratio	1
SMBMO	RST Sigma Mode Background (Minitron Off)	No
TIER_SIGM	RST Sigma Acquisition Mode	0_RST_Sigma
PSPT-A/B: Production Services Logging Platform		
BHS	Borehole Status	CASED
MATR	Rock Matrix for Neutron Porosity Corrections	SANDSTONE
System and Miscellaneous		
BS	Bit Size	8.500 IN
BSAL	Borehole Salinity	-50000.00 PPM
CSIZ	Current Casing Size	7.000 IN
CWEI	Casing Weight	26.00 LB/F
DO	Depth Offset for Playback	0.0 M
DORL	Depth Offset for Repeat Analysis	0.0 M
PP	Playback Processing	RECOMPUTE



<p>Gamma Ray (GR) (GAPI)</p> <p>0 150</p>	<p>Discriminat ed CCL (CCLD)</p> <p>3 (V) -1</p>	<p>RST Sigma (TDT-like) (SIGM_TDTL) (CU)</p> <p>60 0</p>	
<p>RST Sigma Borehole Fluid (SIBF) (CU)</p> <p>100 0</p>	<p>Minitron Arc Detection (MARC)</p>	<p>RST Porosity (TPHI) (V/V)</p> <p>0.6 0</p>	<p>Inelastic CR Far (INFD_FIL) (CPS)</p> <p>10000 0</p>

MAXIS Field Log

Input DLIS Files

DEFAULT

RST_PSP_026LUP

FN:32

PRODUCER

07-Dec-2006 04:03

2199.3 M

2101.3 M

Output DLIS Files

DEFAULT

RST_PSP_026PUP

FN:36

PRODUCER

07-Dec-2006 05:14

2177.0 M

2128.4 M

OP System Version: 14C0-302

MCM

RST-C

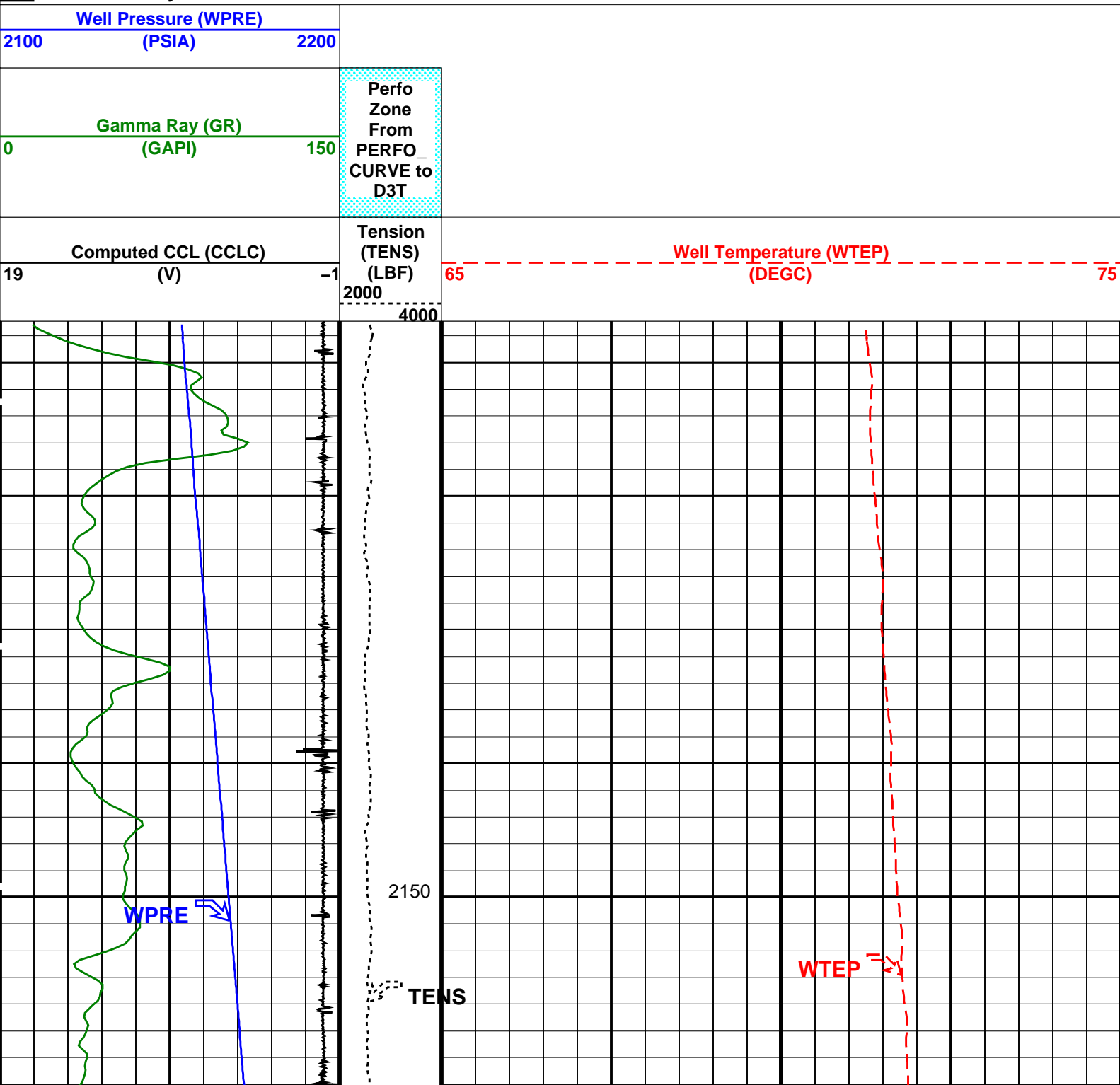
PTC-3043-NUCL

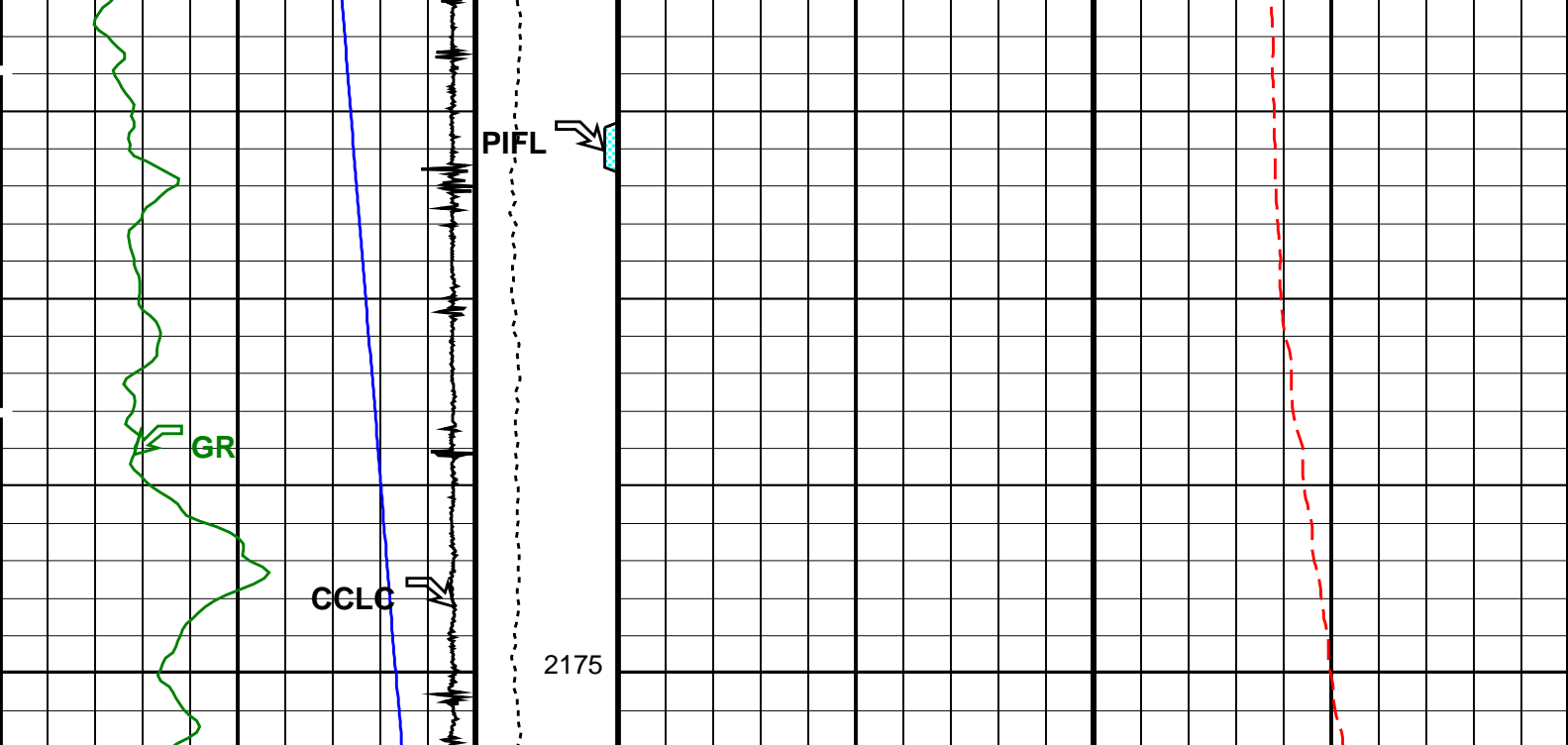
PSPT-A/B

14C0-302

PIP SUMMARY

Time Mark Every 60 S





Computed CCL (CCLC) (V)	Tension (TENS) (LBF)	Well Temperature (WTEP) (DEGC)
19	2000	65
-1	4000	75
Gamma Ray (GR) (GAPI)	Perfo Zone From PERFO_ CURVE to D3T	
0		
150		
Well Pressure (WPRE) (PSIA)		
2100		
2200		

PIP SUMMARY

Time Mark Every 60 S

Format: PSP_1 Vertical Scale: 1:200

Graphics File Created: 07-Dec-2006 05:14

OP System Version: 14C0-302

MCM

RST-C PTC-3043-NUCL PSPT-A/B 14C0-302

Parameters

DLIS Name	Description	Value
DO PP	System and Miscellaneous Depth Offset for Playback Playback Processing	-2.8 M NORMAL

Input DLIS Files

DEFAULT	RST_PSP_026LUP	FN:32	PRODUCER	07-Dec-2006 04:03	2199.3 M	2101.3 M
---------	----------------	-------	----------	-------------------	----------	----------

Output DLIS Files

DEFAULT	RST_PSP_026PUP	FN:36	PRODUCER	07-Dec-2006 05:14
---------	----------------	-------	----------	-------------------

Company: Esso Australia Pty Ltd

Well: WTN W-8a

Schlumberger

Well: **WNN W-04**
Field: **Tuna**
Rig: **Prod 2/ISS Rig 22**
Country: **Australia**

RST-C Sigma
Pressure-Temperature
GR-CCL