



Company: Esso Australia Pty Ltd.

Well: A-12

Field: Snapper

Rig: Prod4 / Crane

Country: Australia

Prod4 / Crane  
Rig: Snapper  
Field: Gippsland  
Location: A-12  
Well: Esso Australia Pty Ltd.  
Company:

PBMS SBHP  
FBHP  
Survey

|             |                    |
|-------------|--------------------|
| Gippsland   | Elev.: K.B. 34.7 m |
| Basin       | G.L. -55 m         |
| Bass Strait | D.F. 34.7 m        |

|                         |     |                          |
|-------------------------|-----|--------------------------|
| Permanent Datum:        | MSL | Elev.: 0 m               |
| Log Measured From:      | DF  | 34.7 m above Perm. Datum |
| Drilling Measured From: | DF  |                          |

|                 |                            |                          |                         |
|-----------------|----------------------------|--------------------------|-------------------------|
| State: Victoria | Max. Well Deviation 66 deg | Longitude 148°01'26.72"E | Latitude 038°11'43.23"S |
|-----------------|----------------------------|--------------------------|-------------------------|

Logging Date 10-Nov-2006

Run Number One

Depth Driller 2201 m

Schlumberger Depth 2201 m

Bottom Log Interval 2201 m

Top Log Interval 1970 m

Casing Fluid Type Production Fluids

Salinity

Density

Fluid Level

BIT/CASING/TUBING STRING

Bit Size 9.875 in

From 0 m

To 2268 m

Casing/Tubing Size 7.625 in

Weight 26.4 lbm/ft

Grade K-55

From 10.9 m

To 2268 m

Maximum Recorded Temperatures 166 degF

Logger On Bottom 10-Nov-2006 12:20

Unit Number 889 AUSL/Prod4

Recorded By O Darby , G Wright

Witnessed By A Smyth , G Rimmer

Run 1

Oil Density  
Water Salinity  
Gas Gravity  
Bo

PVT DATA

Bw  
1/Bq  
Bubble Point Pressure  
Bubble Point Temperature  
Solution GOR  
Maximum Deviation

66 deg

CEMENTING DATA

Primary/Squeeze  
Casing String No  
Lead Cement Type  
Volume  
Density  
Water Loss  
Additives

Primary

Tail Cement Type  
Volume  
Density  
Water Loss  
Additives

Expected Cement Top

Logging Date

Run Number

Depth Driller

Schlumberger Depth

Bottom Log Interval

Top Log Interval

Casing Fluid Type

Salinity

Density

Fluid Level

BIT/CASING/TUBING STRING

Bit Size

From

To

Casing/Tubing Size

Weight

Grade

From

To

Maximum Recorded Temperatures

Logger On Bottom

Unit Number

Recorded By

Witnessed By

## DEPTH SUMMARY LISTING

Date Created: 9-NOV-2006 1:58:42

### Depth System Equipment

| Depth Measuring Device   | Tension Device   | Logging Cable   |
|--|--|---|
| Type: IDW-EB<br>Serial Number: 6373<br>Calibration Date: 28-Sep-2006<br>Calibrator Serial Number: 1009<br>Calibration Cable Type: 2-32ZT<br>Wheel Correction 1: -2<br>Wheel Correction 2: -2 | Type: CMTD-B/A<br>Serial Number: 949<br>Calibration Date: 2-Nov-2006<br>Calibrator Serial Number: 1174<br>Calibration Gain: 1.01<br>Calibration Offset: 162.00 | Type: 2-32ZT<br>Serial Number: 24425<br>Length: 6600.14 M<br>Conveyance Method: Wireline<br>Rig Type: Offshore_Mobile |

### Depth Control Parameters

|                           |                            |
|---------------------------|----------------------------|
| Log Sequence:             | Subsequent Log In the Well |
| Reference Log Name:       | Solar composite.           |
| Reference Log Run Number: | 1                          |
| Reference Log Date:       |                            |







### Depth Control Remarks

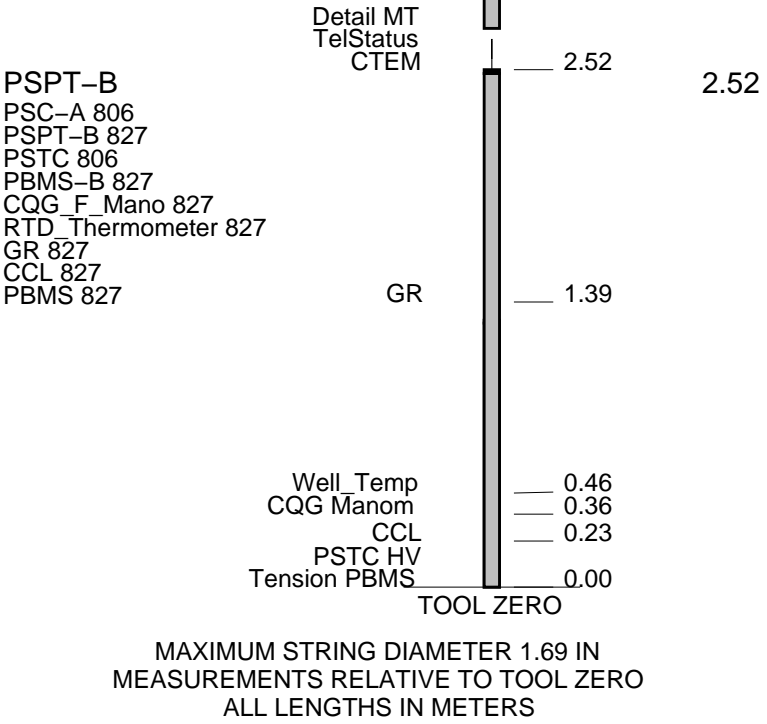
|   |
|---|
| 1. Correlated to Solar Composite Log supplied with program. |
| 2. IDW-EB 6373 used as primary depth control.               |
| 3. Z-chart used as back-up.                                 |
| 4.  |
| 5.  |
| 6.  |

#### DISCLAIMER

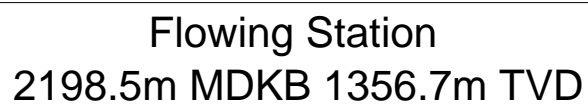
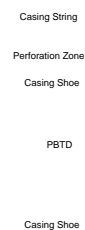
THE USE OF AND RELIANCE UPON THIS RECORDED-DATA BY THE HEREIN NAMED COMPANY (AND ANY OF ITS AFFILIATES, PARTNERS, REPRESENTATIVES, AGENTS, CONSULTANTS AND EMPLOYEES) IS SUBJECT TO THE TERMS AND CONDITIONS AGREED UPON BETWEEN SCHLUMBERGER AND THE COMPANY, INCLUDING: (a) RESTRICTIONS ON USE OF THE RECORDED-DATA; (b) DISCLAIMERS AND WAIVERS OF WARRANTIES AND REPRESENTATIONS REGARDING COMPANY'S USE OF AND RELIANCE UPON THE RECORDED-DATA; AND (c) CUSTOMER'S FULL AND SOLE RESPONSIBILITY FOR ANY INFERENCE DRAWN OR DECISION MADE IN CONNECTION WITH THE USE OF THIS RECORDED-DATA.

|   |
|---|
| OTHER SERVICES1<br>OS1: None<br>OS2:<br>OS3:<br>OS4:<br>OS5:      |
| REMARKS: RUN NUMBER 1   |
| Log Correlated to Solar Composite Log Provided by Client          |
| Maximum Well deviation: 65 deg at 1888m MDKB                      |
| Objectives: Log from HUD to 1970m MDKB for a base line Gamma Ray. |
| Due to HUD @ 2201m MDKB,RST-C Sigma survey was cancelled.         |
| Static and Flowing pressure,temperature survey<br>was conducted.  |
| Stations at : 2199.6m MDKB<br>2192m MDKB                          |

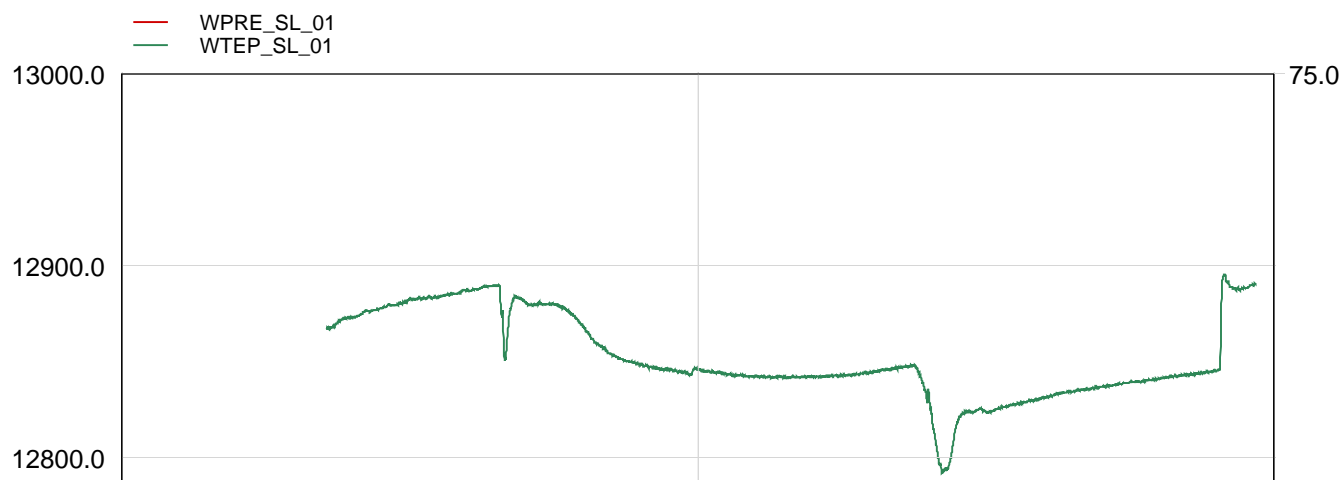
|  |
|--|
| 2167m MDKB   |
| 2142m MDKB   |
| 2117m MDKB   |
| Flowing station at : 2198.5m MDKB.   |
| Crew : John Light , Chris Shiells (Days)   |
| Kevin Kerr , Andrew Hall (Nights)  |
|  |
|  |
| RUN 1  |
| SERVICE ORDER #:<br>PROGRAM VERSION:<br>FLUID LEVEL:   |
| Ausl06328210<br>14C0-302   |
| LOGGED INTERVAL  |
| START  |
| STOP   |
|  |
|  |
|  |
|  |
|  |
|  |
| EQUIPMENT DESCRIPTION  |
| RUN 1  |
| SURFACE EQUIPMENT  |
| WITM-A 827<br>PSC_16MHZ 827  |
| DOWNHOLE EQUIPMENT   |
| <div style="display: flex; align-items: center;"> <div style="flex: 1;"> <p>AH-SWBS<br/>AH-SWBS 763</p>  </div> <div style="flex: 0.5; text-align: right;">7.45</div> </div> <div style="display: flex; align-items: center; margin-top: 10px;"> <div style="flex: 1;"> <p>AH-SWBS<br/>AH-SWBS 762</p>  </div> <div style="flex: 0.5; text-align: right;">6.76</div> </div> <div style="display: flex; align-items: center; margin-top: 10px;"> <div style="flex: 1;"> <p>AH-SWBS<br/>AH-SWBS 761</p>  </div> <div style="flex: 0.5; text-align: right;">6.08</div> </div> <div style="display: flex; align-items: center; margin-top: 10px;"> <div style="flex: 1;"> <p>AH-SWBS<br/>AH-SWBS 731</p>  </div> <div style="flex: 0.5; text-align: right;">5.39</div> </div> <div style="display: flex; align-items: center; margin-top: 10px;"> <div style="flex: 1;"> <p>MH-SWHS<br/>MH-SWHS 726</p>  </div> <div style="flex: 0.5; text-align: right;">4.70</div> </div> <div style="display: flex; align-items: center; margin-top: 10px;"> <div style="flex: 1;"> <p>EQF-43<br/>EQF-43</p>  </div> <div style="flex: 0.5; text-align: right;">4.35</div> </div> |

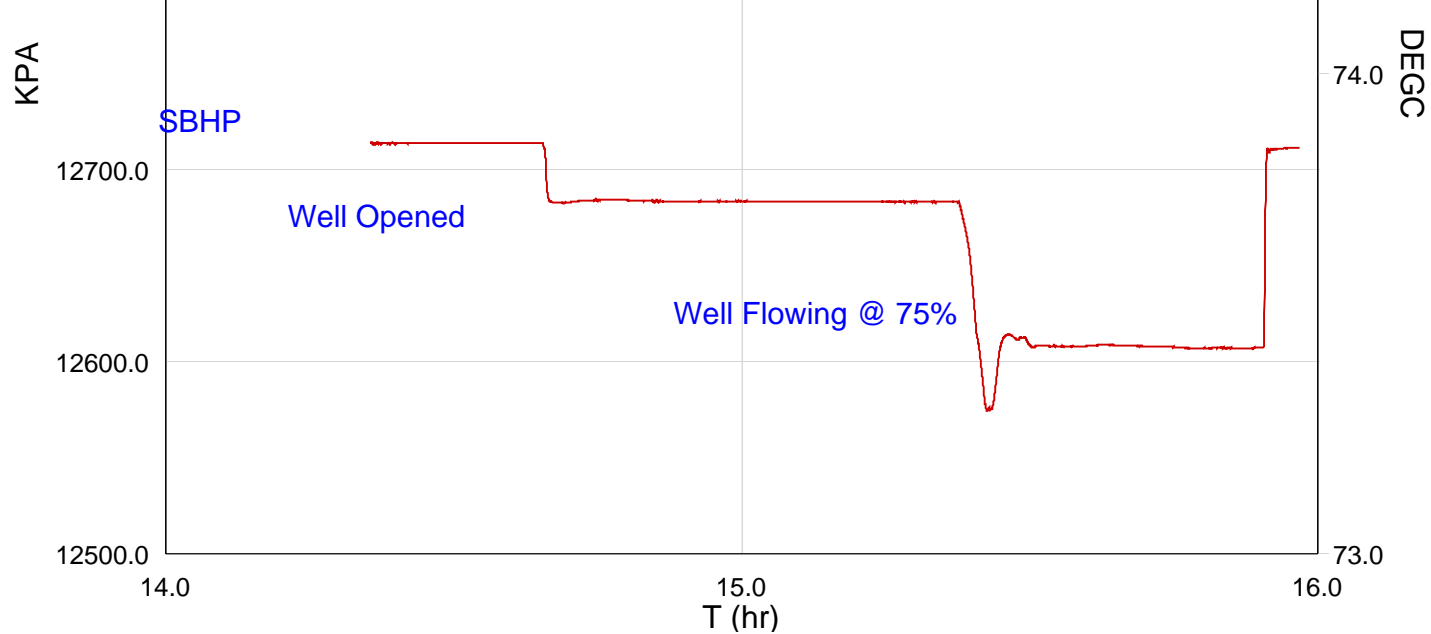


| Production String | (in)  |       | (m)    | Well Schematic | (m)   | (in)   |       | Casing String |
|-------------------|-------|-------|--------|----------------|-------|--------|-------|---------------|
|                   | OD    | ID    | MD     |                | MD    | OD     | ID    |               |
| Tubing            | 5.500 |       | 10.3   |                | 11.3  | 10.750 |       | Casing String |
| Tubing Hanger     | 7.625 | 5.500 | 10.3   |                | 10.9  | 7.625  |       | Casing String |
|                   |       |       |        |                | 10.9  | 10.750 | 7.625 | Liner Hanger  |
| Shutin Valve      | 5.500 |       | 444.0  |                |       |        |       |               |
| Sliding Sleeve    | 5.500 |       | 1142.0 |                | 828.0 | 10.750 |       | Casing Shoe   |



MAXIS Field Log





| TIME | WTEP_SL | WPRE_SL |
|------|---------|---------|
|------|---------|---------|

|         |          |           |
|---------|----------|-----------|
| 12120.0 | 166.0432 | 1843.9789 |
| 12150.0 | 166.0479 | 1843.9726 |
| 12180.0 | 166.0551 | 1843.9731 |
| 12210.0 | 166.0730 | 1843.9733 |
| 12240.0 | 166.0850 | 1843.9772 |
| 12270.0 | 166.0872 | 1843.9817 |
| 12300.0 | 166.0879 | 1843.9798 |
| 12330.0 | 166.0915 | 1843.9800 |
| 12360.0 | 166.1084 | 1843.9700 |
| 12390.0 | 166.1119 | 1843.9774 |
| 12420.0 | 166.1138 | 1843.9857 |
| 12450.0 | 166.1158 | 1843.9803 |
| 12480.0 | 166.1230 | 1843.9823 |
| 12510.0 | 166.1314 | 1843.9838 |
| 12540.0 | 166.1317 | 1843.9890 |
| 12570.0 | 166.1324 | 1843.9913 |
| 12600.0 | 166.1366 | 1843.9854 |
| 12630.0 | 166.1449 | 1843.9833 |
| 12660.0 | 166.1552 | 1843.9889 |
| 12690.0 | 166.1551 | 1843.9945 |
| 12720.0 | 166.1578 | 1843.9969 |
| 12750.0 | 166.1572 | 1843.9962 |
| 12780.0 | 166.1628 | 1843.9912 |
| 12810.0 | 166.1611 | 1843.9967 |
| 12840.0 | 166.1657 | 1843.9974 |
| 12870.0 | 166.1693 | 1843.9969 |
| 12900.0 | 166.1752 | 1844.0016 |
| 12930.0 | 166.1755 | 1844.0053 |
| 12960.0 | 166.1781 | 1844.0057 |
| 12990.0 | 166.1903 | 1844.0005 |
| 13020.0 | 166.1870 | 1844.0038 |
| 13050.0 | 166.1923 | 1843.9998 |
| 13080.0 | 166.1937 | 1843.9997 |
| 13110.0 | 166.2035 | 1844.0013 |
| 13140.0 | 166.2047 | 1844.0057 |
| 13170.0 | 166.2041 | 1844.0054 |
| 13200.0 | 166.2061 | 1844.0034 |

|         |          |           |
|---------|----------|-----------|
| 13200.0 | 166.2084 | 1841.6884 |
| 13230.0 | 166.1098 | 1841.0196 |
| 13260.0 | 166.0171 | 1839.5982 |
| 13290.0 | 166.1424 | 1839.5084 |
| 13320.0 | 166.1618 | 1839.4852 |
| 13350.0 | 166.1539 | 1839.4908 |
| 13380.0 | 166.1394 | 1839.5459 |
| 13410.0 | 166.1327 | 1839.6016 |
| 13440.0 | 166.1329 | 1839.6350 |
| 13470.0 | 166.1354 | 1839.6518 |
| 13500.0 | 166.1378 | 1839.6774 |
| 13530.0 | 166.1375 | 1839.6968 |
| 13560.0 | 166.1364 | 1839.6958 |
| 13590.0 | 166.1260 | 1839.7145 |
| 13620.0 | 166.1180 | 1839.7209 |
| 13650.0 | 166.1069 | 1839.7208 |
| 13680.0 | 166.0923 | 1839.7256 |
| 13710.0 | 166.0683 | 1839.7353 |
| 13740.0 | 166.0475 | 1839.6875 |
| 13770.0 | 166.0220 | 1839.6541 |
| 13800.0 | 165.9998 | 1839.6393 |
| 13830.0 | 165.9858 | 1839.6326 |
| 13860.0 | 165.9752 | 1839.6339 |
| 13890.0 | 165.9526 | 1839.6208 |
| 13920.0 | 165.9445 | 1839.6195 |
| 13950.0 | 165.9374 | 1839.6154 |
| 13980.0 | 165.9310 | 1839.6015 |
| 14010.0 | 165.9234 | 1839.6014 |
| 14040.0 | 165.9191 | 1839.6009 |
| 14070.0 | 165.9150 | 1839.6071 |
| 14100.0 | 165.9121 | 1839.6102 |
| 14130.0 | 165.9056 | 1839.6134 |
| 14160.0 | 165.9019 | 1839.6096 |
| 14190.0 | 165.8941 | 1839.6203 |
| 14220.0 | 165.8950 | 1839.6130 |
| 14250.0 | 165.8956 | 1839.6089 |
| 14280.0 | 165.8906 | 1839.6010 |
| 14310.0 | 165.8865 | 1839.6208 |
| 14340.0 | 165.8828 | 1839.6087 |
| 14370.0 | 165.8841 | 1839.6052 |
| 14400.0 | 165.8721 | 1839.6026 |
| 14430.0 | 165.8962 | 1839.6199 |
| 14460.0 | 165.8919 | 1839.6178 |
| 14490.0 | 165.8853 | 1839.6070 |
| 14520.0 | 165.8854 | 1839.5980 |
| 14550.0 | 165.8818 | 1839.5947 |
| 14580.0 | 165.8816 | 1839.5988 |
| 14610.0 | 165.8741 | 1839.5869 |
| 14640.0 | 165.8741 | 1839.5845 |
| 14670.0 | 165.8705 | 1839.5804 |
| 14700.0 | 165.8695 | 1839.5825 |
| 14730.0 | 165.8698 | 1839.5798 |
| 14760.0 | 165.8660 | 1839.5772 |
| 14790.0 | 165.8660 | 1839.5759 |
| 14820.0 | 165.8650 | 1839.5835 |
| 14850.0 | 165.8674 | 1839.5841 |
| 14880.0 | 165.8644 | 1839.5825 |
| 14910.0 | 165.8607 | 1839.5829 |
| 14940.0 | 165.8639 | 1839.5899 |
| 14970.0 | 165.8652 | 1839.5744 |
| 15000.0 | 165.8583 | 1839.5775 |
| 15030.0 | 165.8626 | 1839.5678 |



|         |          |           |
|---------|----------|-----------|
| 15060.0 | 165.8616 | 1839.5784 |
| 15090.0 | 165.8627 | 1839.5689 |
| 15120.0 | 165.8642 | 1839.5729 |
| 15150.0 | 165.8647 | 1839.5685 |
| 15180.0 | 165.8631 | 1839.5765 |
| 15210.0 | 165.8647 | 1839.5593 |
| 15240.0 | 165.8643 | 1839.5623 |
| 15270.0 | 165.8665 | 1839.5709 |
| 15300.0 | 165.8694 | 1839.5583 |
| 15330.0 | 165.8696 | 1839.5617 |
| 15360.0 | 165.8721 | 1839.5536 |
| 15390.0 | 165.8698 | 1839.5506 |
| 15420.0 | 165.8731 | 1839.5599 |
| 15450.0 | 165.8745 | 1839.5628 |
| 15480.0 | 165.8760 | 1839.5703 |
| 15510.0 | 165.8783 | 1839.5561 |
| 15540.0 | 165.8822 | 1839.5498 |
| 15570.0 | 165.8849 | 1839.5608 |
| 15600.0 | 165.8911 | 1839.5656 |
| 15630.0 | 165.8949 | 1839.5639 |
| 15660.0 | 165.8931 | 1839.5510 |
| 15690.0 | 165.8958 | 1839.5522 |
| 15720.0 | 165.9003 | 1839.5632 |
| 15750.0 | 165.9015 | 1839.5587 |
| 15780.0 | 165.9032 | 1839.5639 |
| 15810.0 | 165.9053 | 1839.4533 |
| 15840.0 | 165.8684 | 1837.9190 |
| 15870.0 | 165.8142 | 1835.9927 |
| 15900.0 | 165.7636 | 1832.1970 |
| 15930.0 | 165.6497 | 1828.8086 |
| 15960.0 | 165.5348 | 1825.5649 |
| 15990.0 | 165.5153 | 1823.8519 |
| 16020.0 | 165.5340 | 1824.1907 |
| 16050.0 | 165.6293 | 1827.1878 |
| 16080.0 | 165.7047 | 1829.1353 |
| 16110.0 | 165.7262 | 1829.5313 |
| 16140.0 | 165.7351 | 1829.4332 |
| 16170.0 | 165.7316 | 1829.1686 |
| 16200.0 | 165.7402 | 1829.3202 |
| 16230.0 | 165.7409 | 1829.1242 |
| 16260.0 | 165.7288 | 1828.6330 |
| 16290.0 | 165.7351 | 1828.6905 |
| 16320.0 | 165.7428 | 1828.7327 |
| 16350.0 | 165.7469 | 1828.6982 |
| 16380.0 | 165.7535 | 1828.6553 |
| 16410.0 | 165.7568 | 1828.6794 |
| 16440.0 | 165.7611 | 1828.6566 |
| 16470.0 | 165.7639 | 1828.6520 |
| 16500.0 | 165.7703 | 1828.6465 |
| 16530.0 | 165.7753 | 1828.6558 |
| 16560.0 | 165.7785 | 1828.6384 |
| 16590.0 | 165.7817 | 1828.6540 |
| 16620.0 | 165.7864 | 1828.6808 |
| 16650.0 | 165.7938 | 1828.7058 |
| 16680.0 | 165.7980 | 1828.7654 |
| 16710.0 | 165.8020 | 1828.7986 |
| 16740.0 | 165.8039 | 1828.7646 |
| 16770.0 | 165.8073 | 1828.7463 |
| 16800.0 | 165.8092 | 1828.7353 |
| 16830.0 | 165.8130 | 1828.7289 |
| 16860.0 | 165.8170 | 1828.7239 |

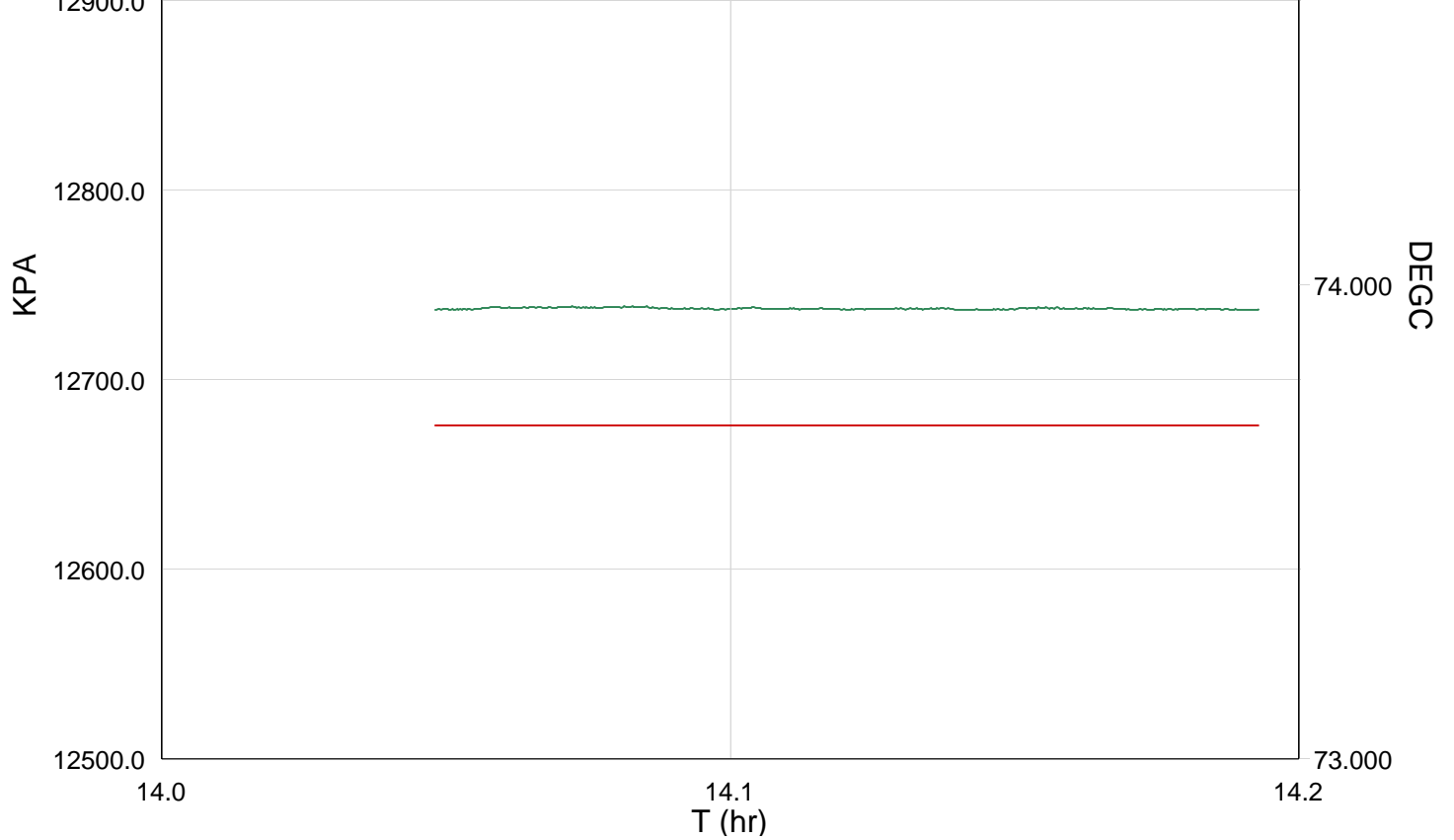
|         |          |           |
|---------|----------|-----------|
| 16890.0 | 165.8185 | 1828.6837 |
| 16920.0 | 165.8221 | 1828.6880 |
| 16950.0 | 165.8239 | 1828.6794 |
| 16980.0 | 165.8256 | 1828.6593 |
| 17010.0 | 165.8291 | 1828.6534 |
| 17040.0 | 165.8320 | 1828.6449 |
| 17070.0 | 165.8355 | 1828.6478 |
| 17100.0 | 165.8394 | 1828.6445 |
| 17130.0 | 165.8419 | 1828.6249 |
| 17160.0 | 165.8431 | 1828.5719 |
| 17190.0 | 165.8474 | 1828.5494 |
| 17220.0 | 165.8451 | 1828.5286 |
| 17250.0 | 165.8508 | 1828.5178 |
| 17280.0 | 165.8520 | 1828.5187 |
| 17310.0 | 165.8549 | 1828.5102 |
| 17340.0 | 165.8576 | 1828.5292 |
| 17370.0 | 165.8619 | 1828.5181 |
| 17400.0 | 165.8642 | 1828.5423 |
| 17430.0 | 165.8667 | 1828.5409 |
| 17460.0 | 165.8687 | 1828.5254 |
| 17490.0 | 165.8692 | 1828.5403 |
| 17520.0 | 165.8735 | 1828.4906 |
| 17550.0 | 165.8719 | 1828.5073 |
| 17580.0 | 165.8783 | 1828.4862 |
| 17610.0 | 165.8773 | 1828.4917 |
| 17640.0 | 165.8818 | 1828.5148 |
| 17670.0 | 165.8865 | 1828.5415 |
| 17700.0 | 165.8871 | 1828.5539 |
| 17730.0 | 166.2301 | 1842.8872 |
| 17760.0 | 166.2218 | 1843.5959 |
| 17790.0 | 166.1996 | 1843.5277 |
| 17820.0 | 166.1927 | 1843.6062 |
| 17850.0 | 166.1936 | 1843.6097 |
| 17880.0 | 166.1960 | 1843.6346 |
| 17910.0 | 166.2082 | 1843.6417 |
| 17940.0 | 166.2145 | 1843.6602 |

**Schlumberger**

Static Station  
2117m MDKB 1321.2m TVD

MAXIS Field Log





| TIME    | WTEP_SL  | WPRE_SL   |
|---------|----------|-----------|
| 11040.0 | 165.1082 | 1838.5020 |
| 11070.0 | 165.1152 | 1838.5087 |
| 11100.0 | 165.1144 | 1838.5133 |
| 11130.0 | 165.1140 | 1838.5143 |
| 11160.0 | 165.1172 | 1838.5167 |
| 11190.0 | 165.1099 | 1838.5151 |
| 11220.0 | 165.1128 | 1838.5163 |
| 11250.0 | 165.1125 | 1838.5134 |
| 11280.0 | 165.1096 | 1838.5179 |
| 11310.0 | 165.1103 | 1838.5138 |
| 11340.0 | 165.1102 | 1838.5169 |
| 11370.0 | 165.1055 | 1838.5150 |
| 11400.0 | 165.1115 | 1838.5122 |
| 11430.0 | 165.1105 | 1838.5100 |
| 11460.0 | 165.1107 | 1838.5035 |
| 11490.0 | 165.1091 | 1838.5049 |
| 11520.0 | 165.1109 | 1838.5031 |
| 11550.0 | 165.1065 | 1838.5060 |

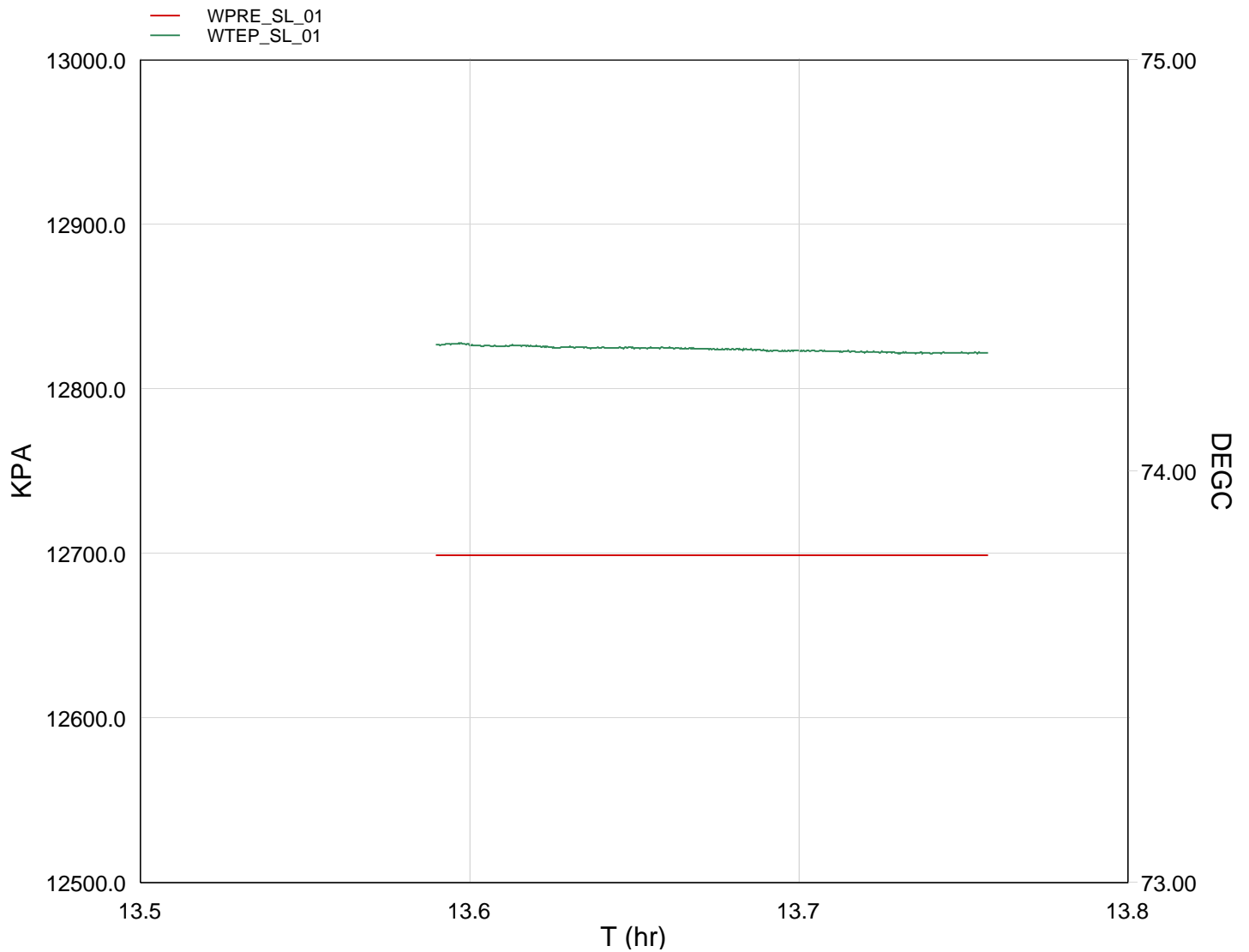


|         |          |           |
|---------|----------|-----------|
| 10740.0 | 165.2436 | 1840.2145 |
| 10770.0 | 165.2371 | 1840.2179 |
| 10800.0 | 165.2359 | 1840.2114 |
| 10830.0 | 165.2403 | 1840.2117 |



Static Station  
2167m MDKB 1343m TVD

MAXIS Field Log



| TIME | WTEP_SL | WPRE_SL |
|------|---------|---------|
|------|---------|---------|

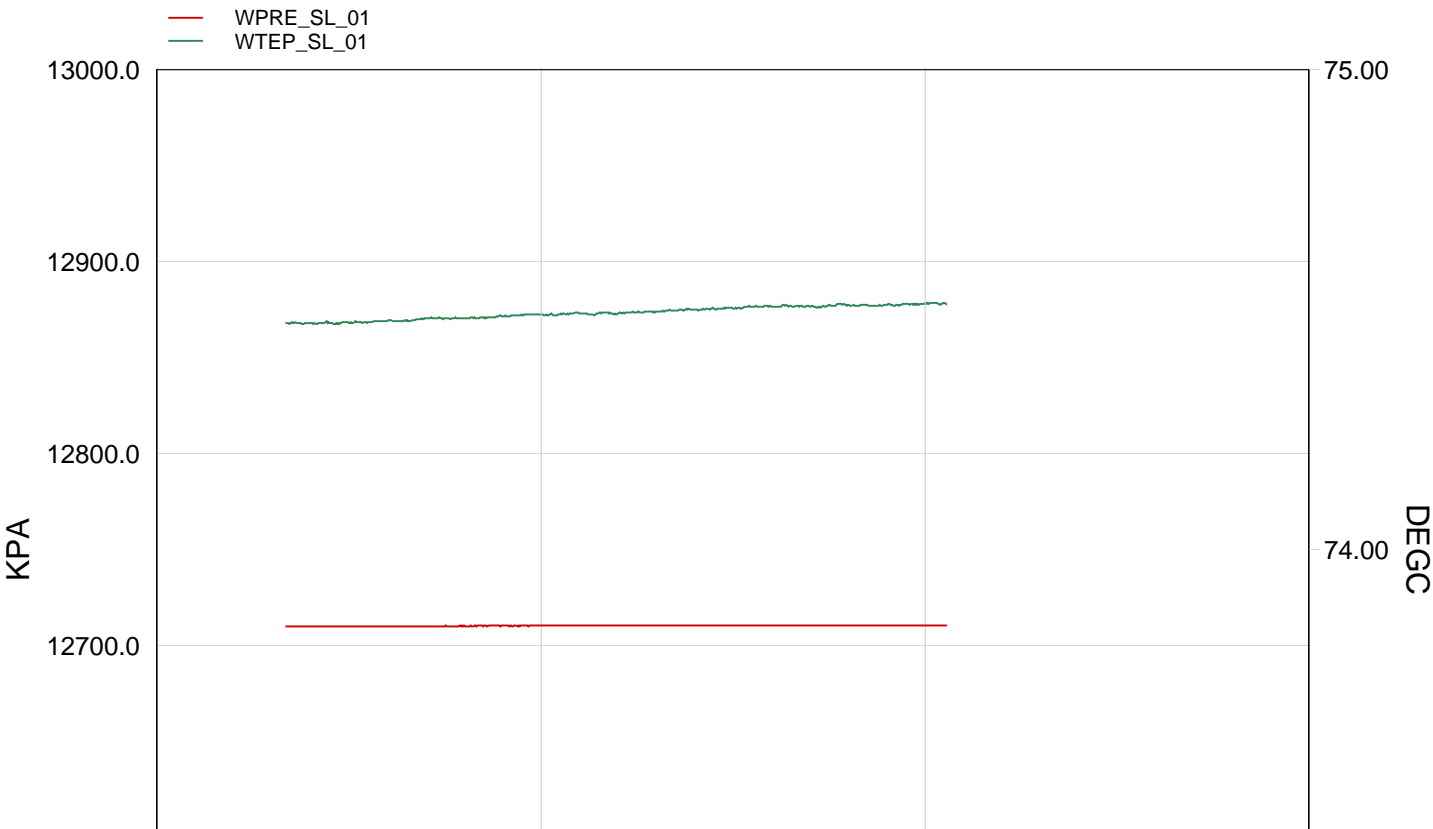
|        |          |           |
|--------|----------|-----------|
| 9360.0 | 165.7547 | 1841.8142 |
| 9390.0 | 165.7550 | 1841.8125 |

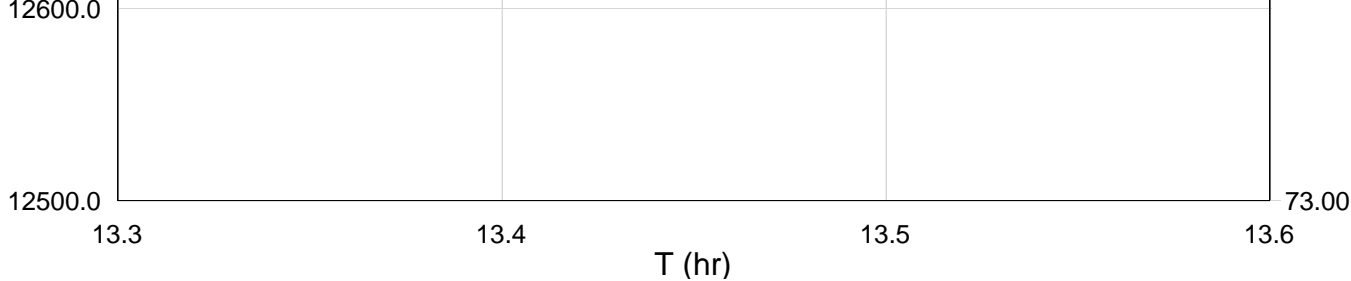
|        |          |           |
|--------|----------|-----------|
| 9390.0 | 165.7559 | 1841.8125 |
| 9420.0 | 165.7512 | 1841.8238 |
| 9450.0 | 165.7476 | 1841.8288 |
| 9480.0 | 165.7471 | 1841.8365 |
| 9510.0 | 165.7414 | 1841.8415 |
| 9540.0 | 165.7404 | 1841.8486 |
| 9570.0 | 165.7406 | 1841.8531 |
| 9600.0 | 165.7399 | 1841.8539 |
| 9630.0 | 165.7417 | 1841.8511 |
| 9660.0 | 165.7379 | 1841.8510 |
| 9690.0 | 165.7327 | 1841.8570 |
| 9720.0 | 165.7330 | 1841.8600 |
| 9750.0 | 165.7248 | 1841.8577 |
| 9780.0 | 165.7277 | 1841.8626 |
| 9810.0 | 165.7253 | 1841.8537 |
| 9840.0 | 165.7225 | 1841.8608 |
| 9870.0 | 165.7219 | 1841.8600 |
| 9900.0 | 165.7176 | 1841.8634 |
| 9930.0 | 165.7199 | 1841.8625 |
| 9960.0 | 165.7199 | 1841.8558 |



Static Station  
2192.4m MDKB 1353.9m TVD

MAXIS Field Log



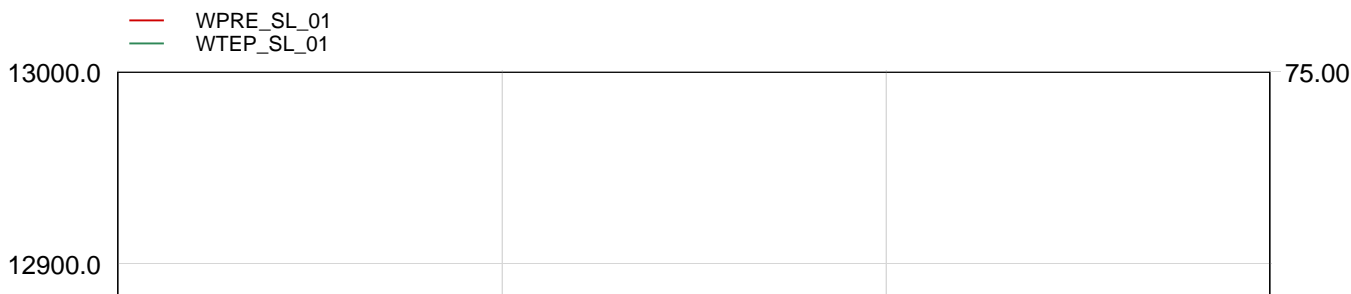


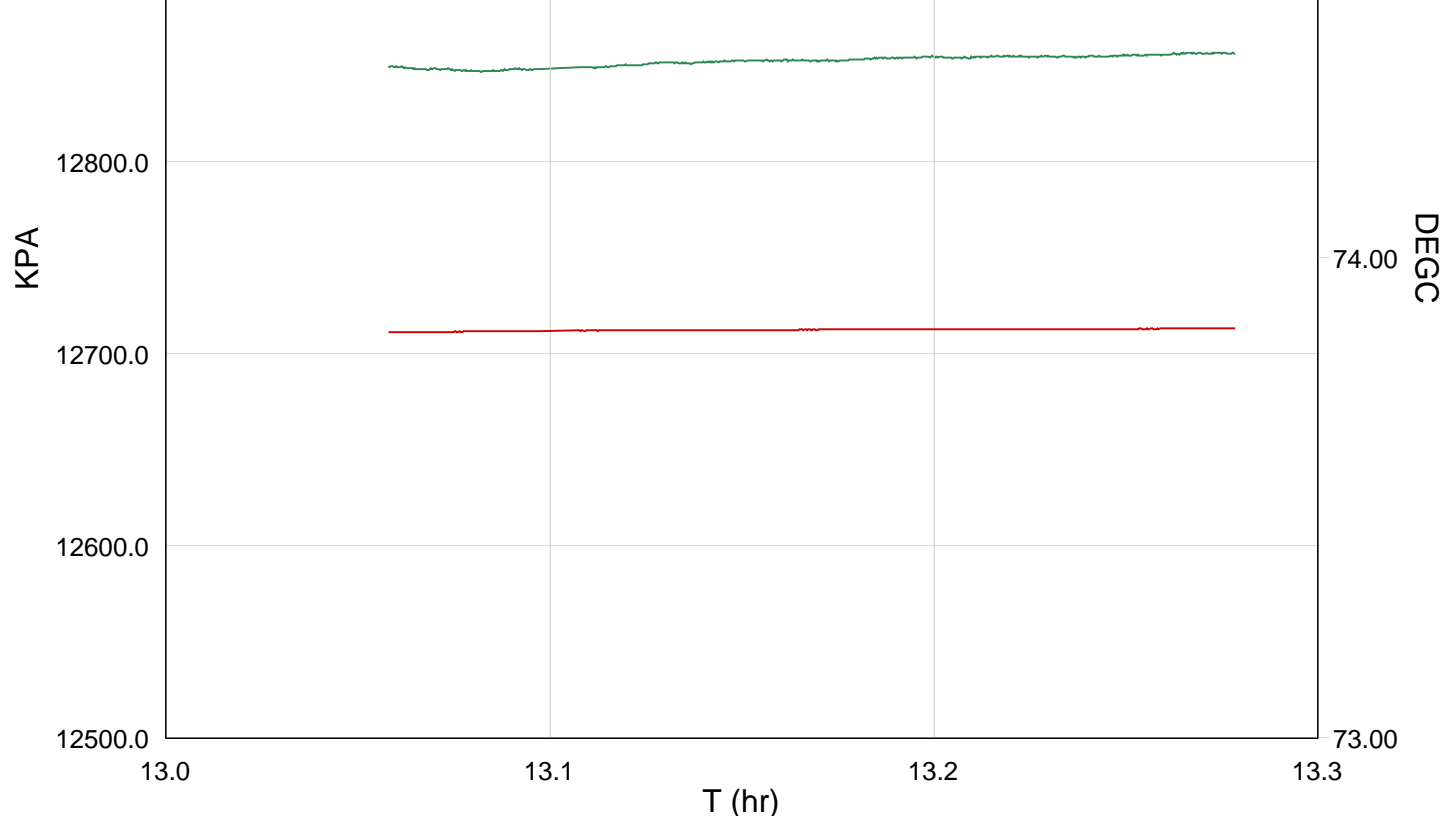
| TIME   | WTEP_SL  | WPRE_SL   |
|--------|----------|-----------|
| 8460.0 | 166.0503 | 1843.4487 |
| 8490.0 | 166.0552 | 1843.4491 |
| 8520.0 | 166.0542 | 1843.4502 |
| 8550.0 | 166.0588 | 1843.4569 |
| 8580.0 | 166.0645 | 1843.4588 |
| 8610.0 | 166.0676 | 1843.4567 |
| 8640.0 | 166.0697 | 1843.4690 |
| 8670.0 | 166.0771 | 1843.4713 |
| 8700.0 | 166.0818 | 1843.4746 |
| 8730.0 | 166.0859 | 1843.4785 |
| 8760.0 | 166.0858 | 1843.4749 |
| 8790.0 | 166.0933 | 1843.4844 |
| 8820.0 | 166.0977 | 1843.4897 |
| 8850.0 | 166.1024 | 1843.4925 |
| 8880.0 | 166.1060 | 1843.4921 |
| 8910.0 | 166.1116 | 1843.4872 |
| 8940.0 | 166.1140 | 1843.4958 |
| 8970.0 | 166.1201 | 1843.5013 |
| 9000.0 | 166.1147 | 1843.4952 |
| 9030.0 | 166.1198 | 1843.5034 |
| 9060.0 | 166.1242 | 1843.5065 |

**Schlumberger**

Static Station  
2199.6m MDKB

MAXIS Field Log





| TIME   | DEGF     | PSIA      |
|--------|----------|-----------|
| 7650.0 | 165.9159 | 1843.7620 |
| 7680.0 | 165.9237 | 1843.7680 |
| 7710.0 | 165.9344 | 1843.7797 |
| 7740.0 | 165.9311 | 1843.7931 |
| 7770.0 | 165.9373 | 1843.8017 |
| 7800.0 | 165.9418 | 1843.8127 |
| 7830.0 | 165.9417 | 1843.8252 |
| 7860.0 | 165.9407 | 1843.8293 |
| 7890.0 | 165.9412 | 1843.8344 |
| 7920.0 | 165.9505 | 1843.8471 |
| 7950.0 | 165.9521 | 1843.8509 |
| 7980.0 | 165.9533 | 1843.8632 |
| 8010.0 | 165.9544 | 1843.8702 |
| 8040.0 | 165.9589 | 1843.8724 |
| 8070.0 | 165.9572 | 1843.8763 |
| 8100.0 | 165.9574 | 1843.8807 |
| 8130.0 | 165.9557 | 1843.8904 |
| 8160.0 | 165.9629 | 1843.8968 |
| 8190.0 | 165.9643 | 1843.9056 |
| 8220.0 | 165.9706 | 1843.9132 |
| 8250.0 | 165.9676 | 1843.9144 |

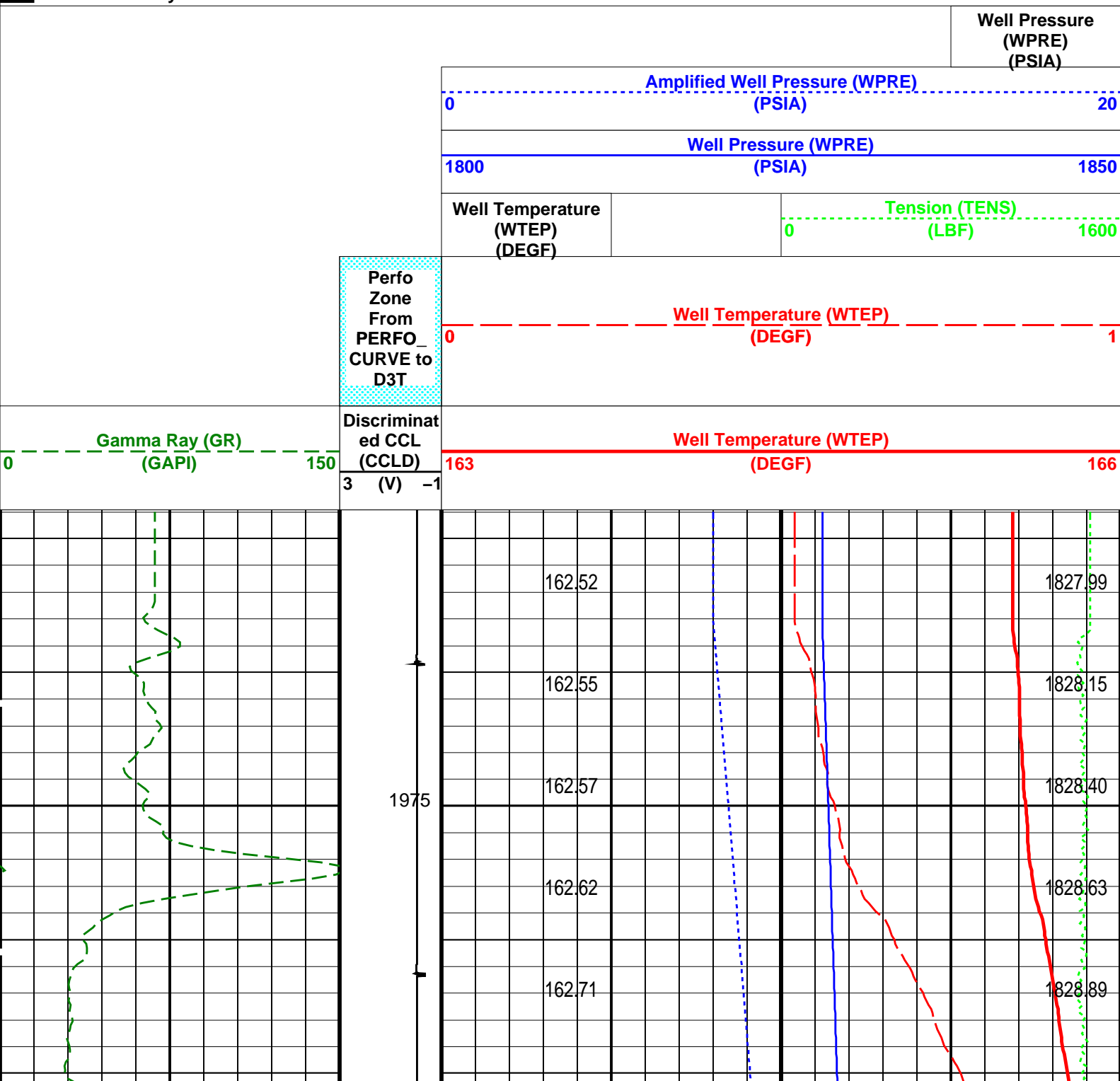


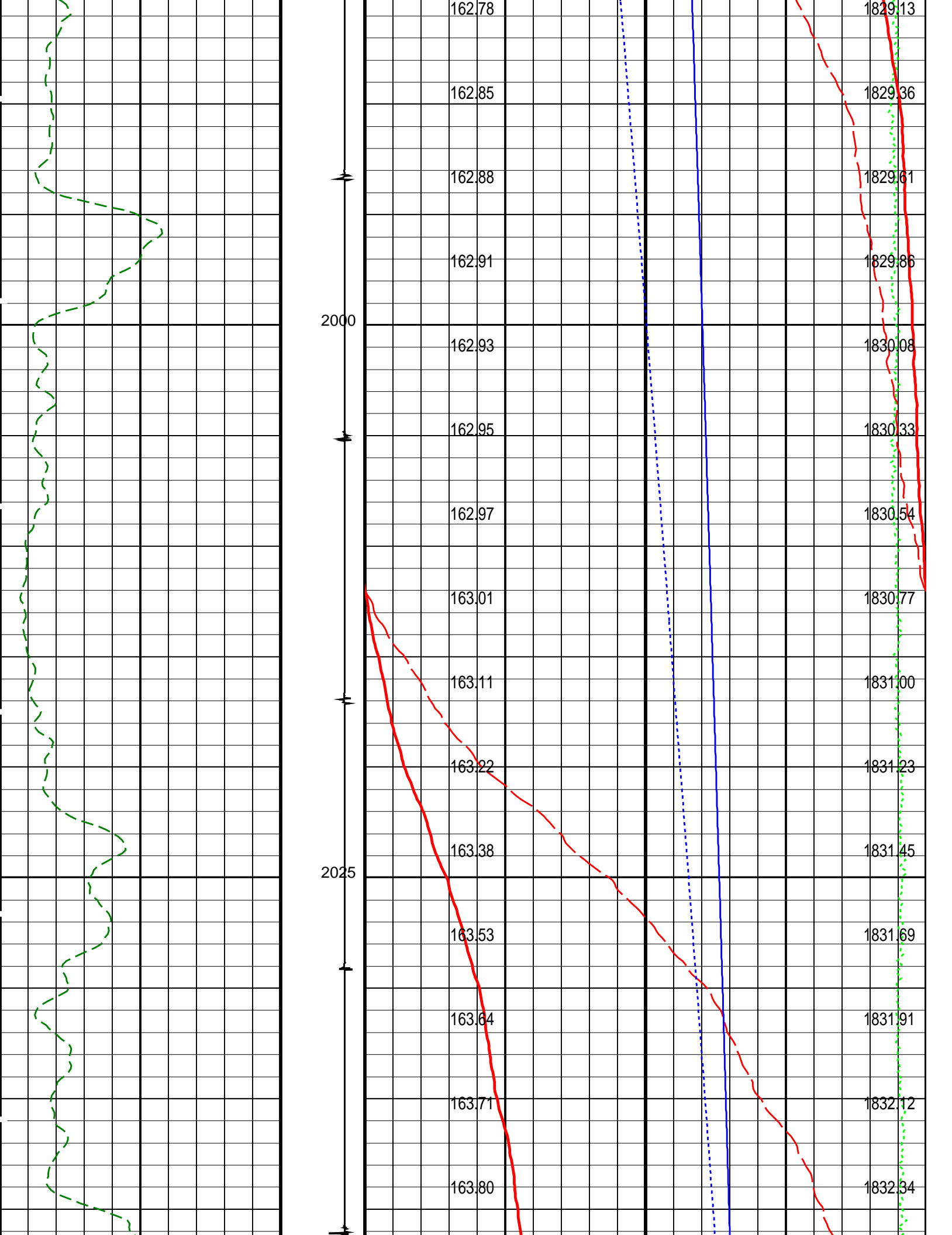
## Output DLIS Files

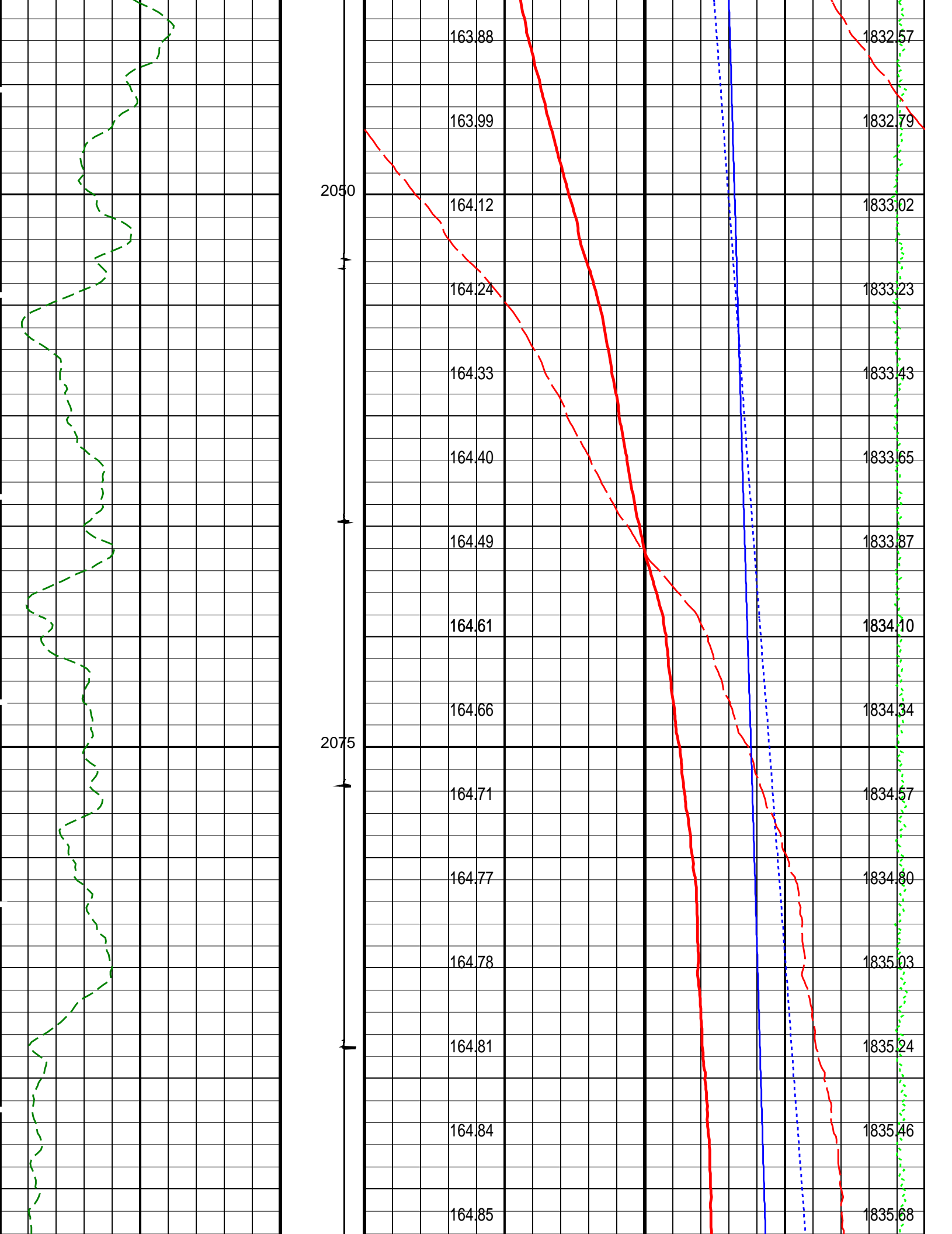
|         |            |       |          |                   |          |          |
|---------|------------|-------|----------|-------------------|----------|----------|
| DEFAULT | PSP_027PUP | FN:26 | PRODUCER | 10-Nov-2006 12:50 | 2233.9 M | 1963.8 M |
|---------|------------|-------|----------|-------------------|----------|----------|

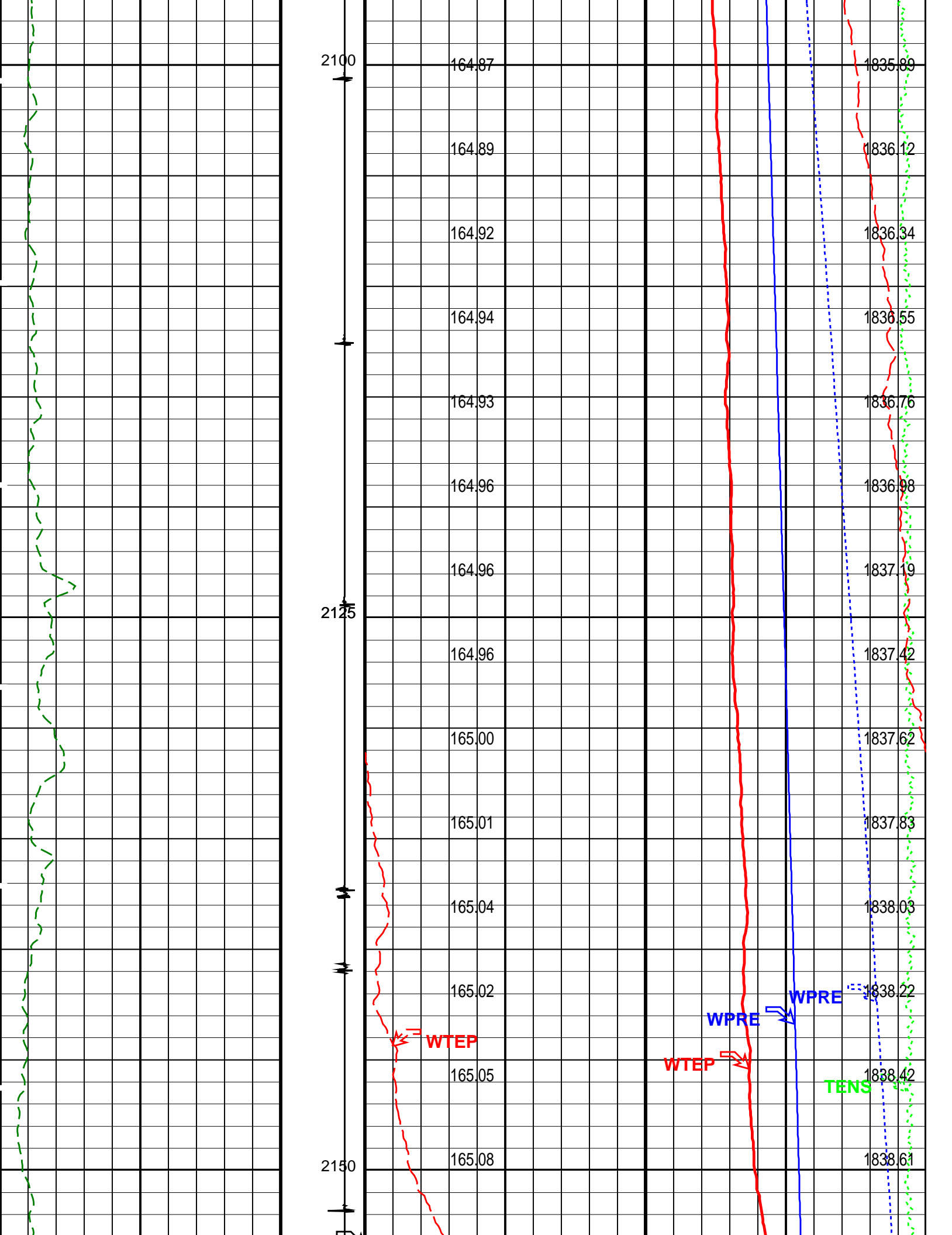
PSPT-B 14C0-302

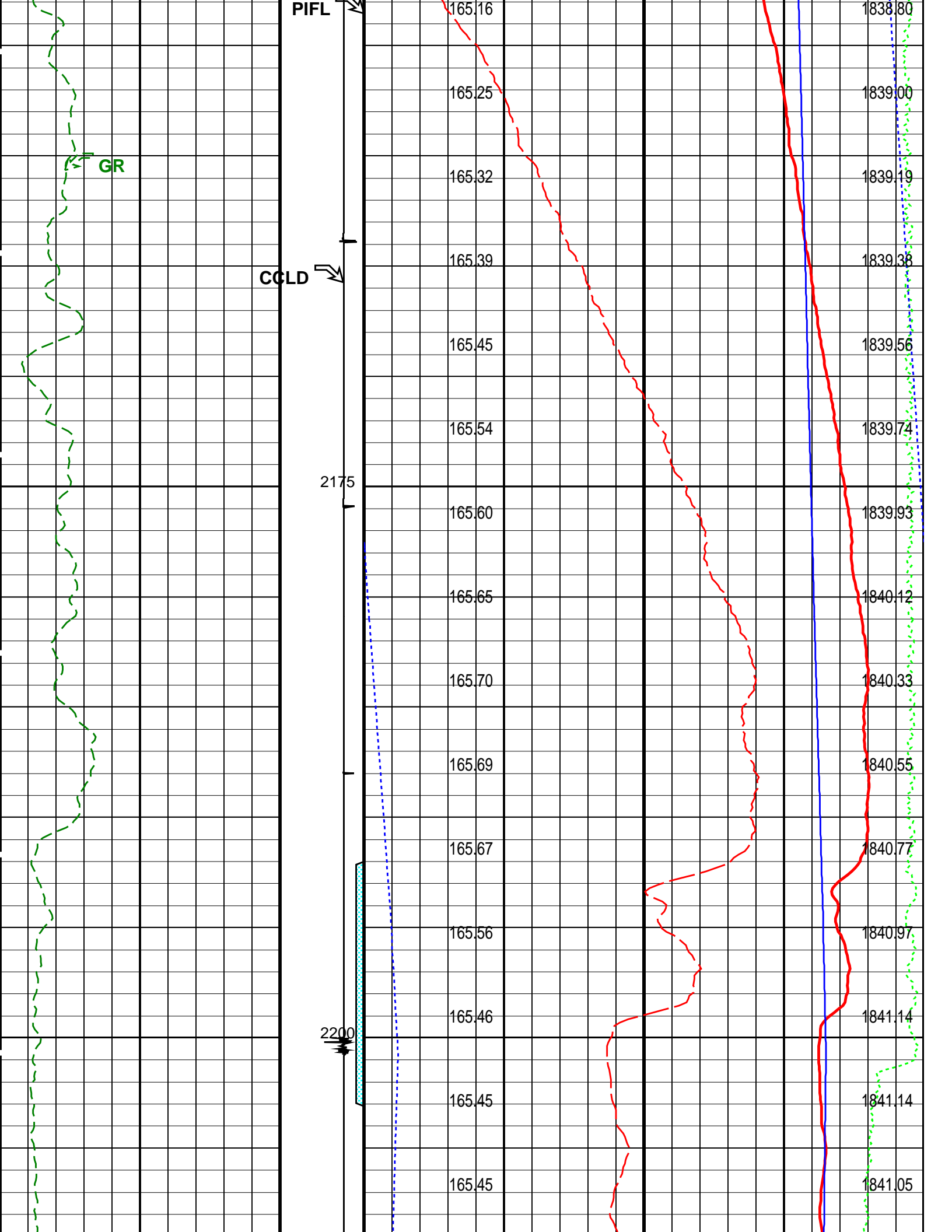
**Time Mark Every 60 S**

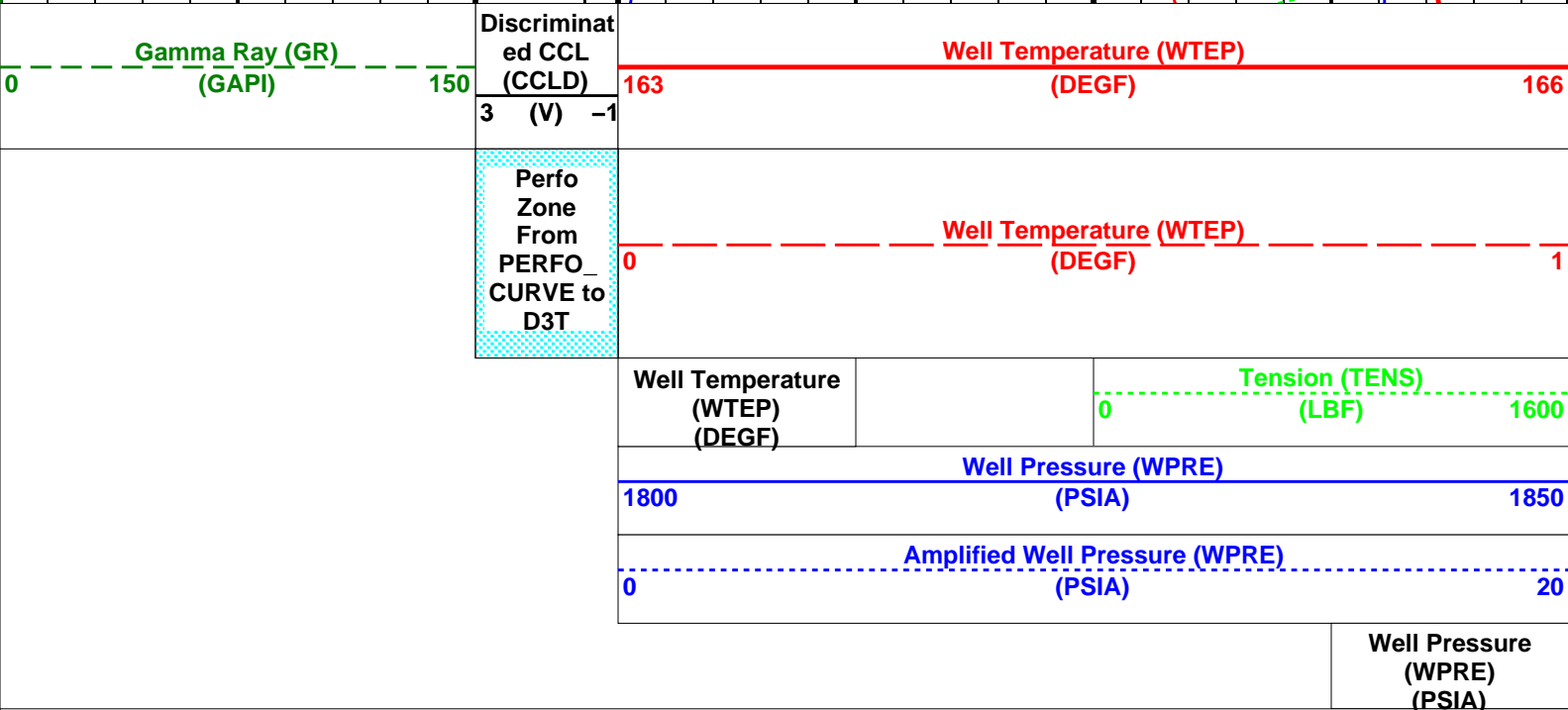
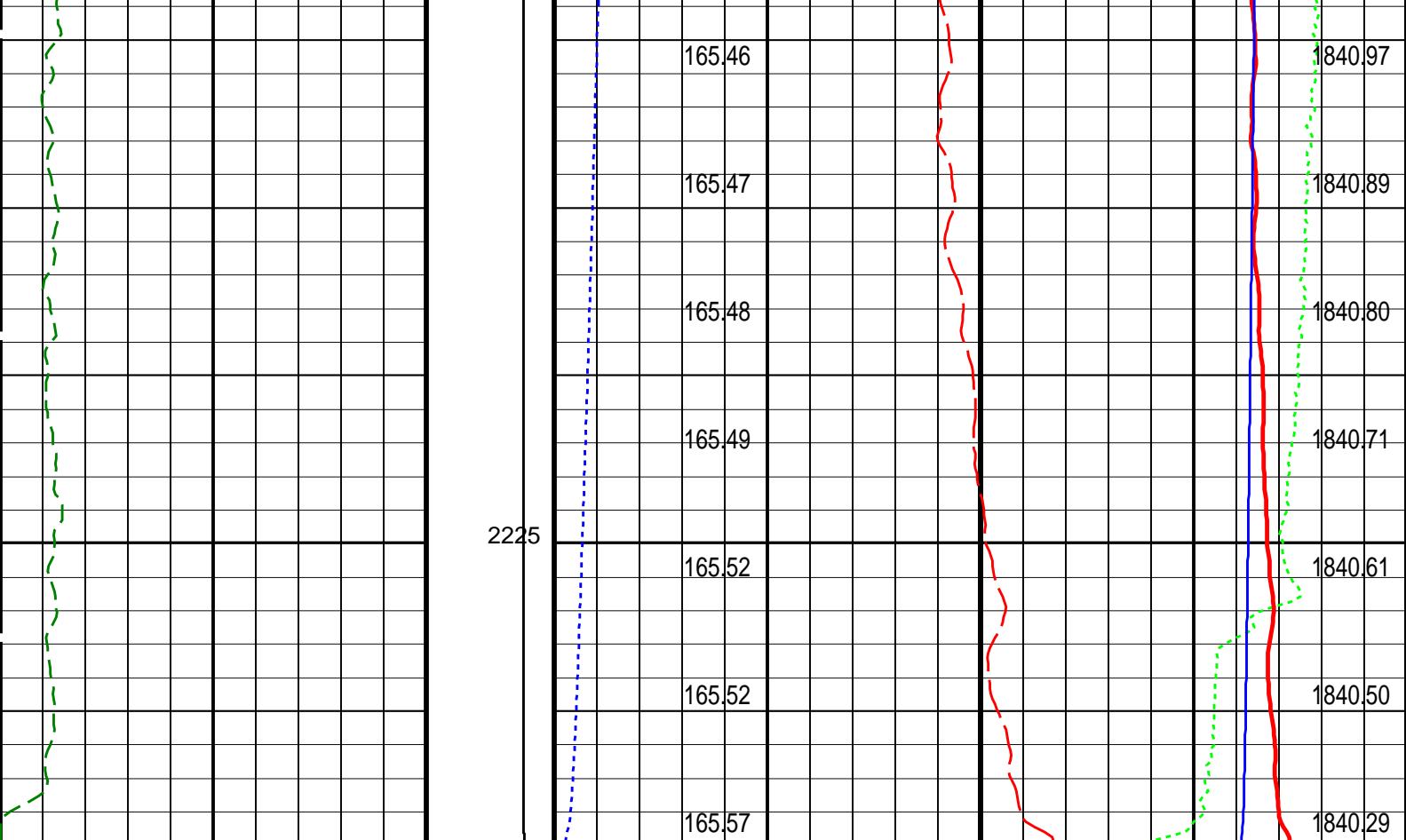












PIP SUMMARY

Time Mark Every 60 S

Format: PSP\_1 Vertical Scale: 1:200 Graphics File Created: 10-Nov-2006 12:50

OP System Version: 14C0-302  
MCM

PSPT-B 14C0-302

| Parameters |   |       |
|------------|---|-------|
| DLIS Name  | Description   | Value |
| DO         | System and Miscellaneous<br>Depth Offset for Playback | 7.2 M |

|                   |                     |  |
|-------------------|---------------------|--|
| PP                | Playback Processing | NORMAL   |
| Input DLIS Files  |                     |  |
| DEFAULT           | PSP_026LUP          | FN:25 PRODUCER 10-Nov-2006 12:18 2226.7 M 1958.8 M |
| Output DLIS Files |                     |  |
| DEFAULT           | PSP_027PUP          | FN:26 PRODUCER 10-Nov-2006 12:50                   |

|          |                         |              |
|----------|-------------------------|--------------|
| Company: | Esso Australia Pty Ltd. | Schlumberger |
| Well:    | A-12                    |              |
| Field:   | Snapper                 |              |
| Rig:     | Prod4 / Crane           |              |
| Country: | Australia               |              |
|          | PBMS SBHP               |              |
|          | FBHP                    |              |
|          | Survey                  |              |