

Company: Esso Australia Ltd.

Well: B-7

Field: Bream B

Rig: Prod4

Country: Australia

7" HPI PSP Plug
2 1/8"Phased Powerjet
Perforation

Prod4
Bream B
Gippsland
B-7
Esso Australia Ltd.

LOCATION	
Gippsland	Elev.: K.B.
Basin	G.L. -63 m
Bass Strait	D.F. 47.17 m
Permanent Datum:	M.S.L.
Log Measured From:	D.F.
Drilling Measured From:	D.F.
State: Victoria	Max. Well Deviation 50 deg
	Longitude 147 50'16.81"E
	Latitude 038 31'10.90"S

Logging Date	23-Oct-2006		
Run Number	1 thru 3		
Depth Driller	2471 m		
Schlumberger Depth	2471 m		
Bottom Log Interval	2465 m		
Top Log Interval	2425 m		
Casing Fluid Type	Production Fluids		
Salinity			
Density			
Fluid Level			
BIT/CASING/TUBING STRING			
Bit Size	8.500 in		
From			
To			
Casing/Tubing Size	7.000 in		
Weight	26 lbm/ft		
Grade	LT&C		
From	20.7 m		
To	2609.98 m		
Maximum Recorded Temperatures	211 degf		
Logger On Bottom	23-Oct-2006		10:00
Unit Number	889	Prod4	
Recorded By	G Wright.		
Witnessed By	B White.		

PVT DATA			Run 1
Oil Density			
Water Salinity			
Gas Gravity			
Bo			
Bw			
1/Bg			
Bubble Point Pressure			
Bubble Point Temperature			
Solution GOR			
Maximum Deviation	50 deg		
CEMENTING DATA			
Primary/Squeeze	Primary		
Casing String No			
Lead Cement Type			
Volume			
Density			
Water Loss			
Additives			
Tail Cement Type			
Volume			
Density			
Water Loss			
Additives			
Expected Cement Top			
Logging Date			
Run Number			
Depth Driller			
Schlumberger Depth			
Bottom Log Interval			
Top Log Interval			
Casing Fluid Type			
Salinity			
Density			
Fluid Level			
BIT/CASING/TUBING STRING			
Bit Size			
From			
To			
Casing/Tubing Size			
Weight			
Grade			
From			
To			
Maximum Recorded Temperatures			
Logger On Bottom			
Unit Number			
Recorded By			
Witnessed By			

DEPTH SUMMARY LISTING

Date Created: 21-Oct-2006 12:10:45

Depth System Equipment

Depth Measuring Device		Tension Device		Logging Cable	
Type:	IDW-EB	Type:	CMTD-B/A	Type:	2-32ZT
Serial Number:	6373	Serial Number:	949	Serial Number:	24425
Calibration Date:	28-SEP-2006	Calibration Date:	28-SEP-2006	Length:	
Calibrator Serial Number:	1009	Calibrator Serial Number:	1174	Conveyance Method: Wireline Rig Type: Offshore_Mobile	
Calibration Cable Type:	2-32ZT	Calibration Gain:	1.01		
Wheel Correction 1:	-2	Calibration Offset:	195.00		
Wheel Correction 2:	-2				

Depth Control Parameters

Log Sequence:	Subsequent Log In the Well
Reference Log Name:	Solar composite.
Reference Log Run Number:	1
Reference Log Date:	

Depth Control Remarks

1. Correlated to Solar composite log supplied with program.
2. IDW-EB 6373 used as primary depth control.
3. Z-chart used as back-up.

DISCLAIMER

THE USE OF AND RELIANCE UPON THIS RECORDED-DATA BY THE HEREIN NAMED COMPANY (AND ANY OF ITS AFFILIATES, PARTNERS, REPRESENTATIVES, AGENTS, CONSULTANTS AND EMPLOYEES) IS SUBJECT TO THE TERMS AND CONDITIONS AGREED UPON BETWEEN SCHLUMBERGER AND THE COMPANY, INCLUDING: (a) RESTRICTIONS ON USE OF THE RECORDED-DATA; (b) DISCLAIMERS AND WAIVERS OF WARRANTIES AND REPRESENTATIONS REGARDING COMPANY'S USE OF AND RELIANCE UPON THE RECORDED-DATA; AND (c) CUSTOMER'S FULL AND SOLE RESPONSIBILITY FOR ANY INFERENCE DRAWN OR DECISION MADE IN CONNECTION WITH THE USE OF THIS RECORDED-DATA.

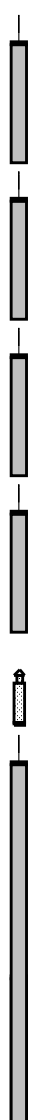

OTHER SERVICES1
OS1: RST Sigma
OS2:
OS3:
OS4:
OS5:
REMARKS: RUN NUMBER 1
Log correlated to ExxonMobil composite supplied with logging program.
Maximum well deviation = 50 degrees at 843m MDKB.
Prior to perforating RST sigma was logged and a HPI PSP plug
was set at 2471m MDKB to isolate the watered out zone.
Perforation interval was 2459m to 2462m MDKB, 2 1/8" 45 degree phased
powerjet at 6 spf used for this perforation.
SRHP - 2649 psia

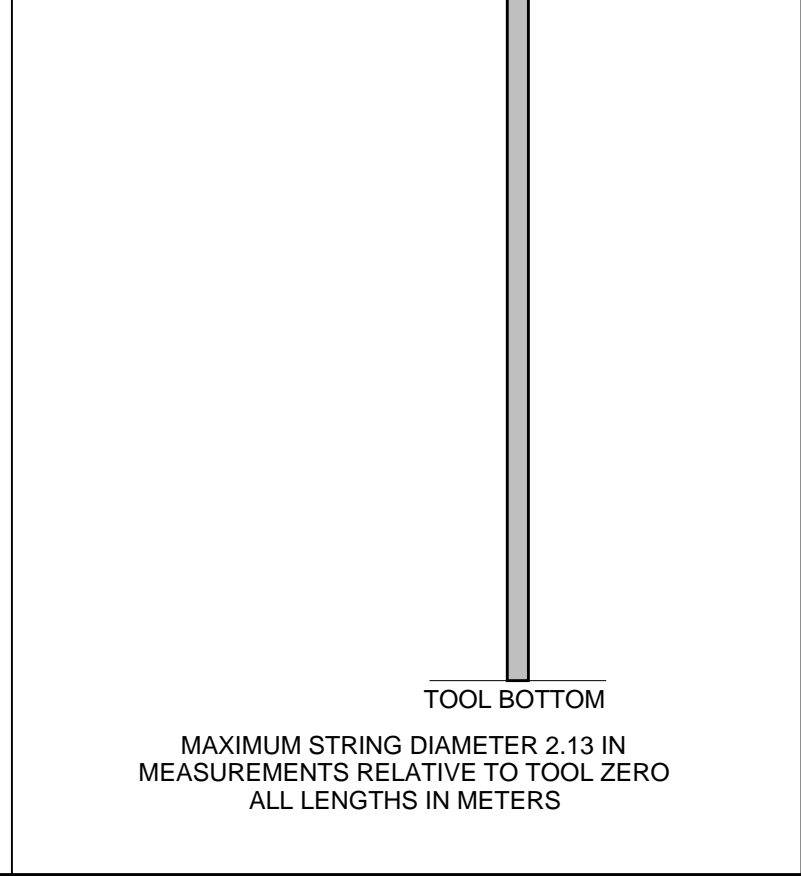
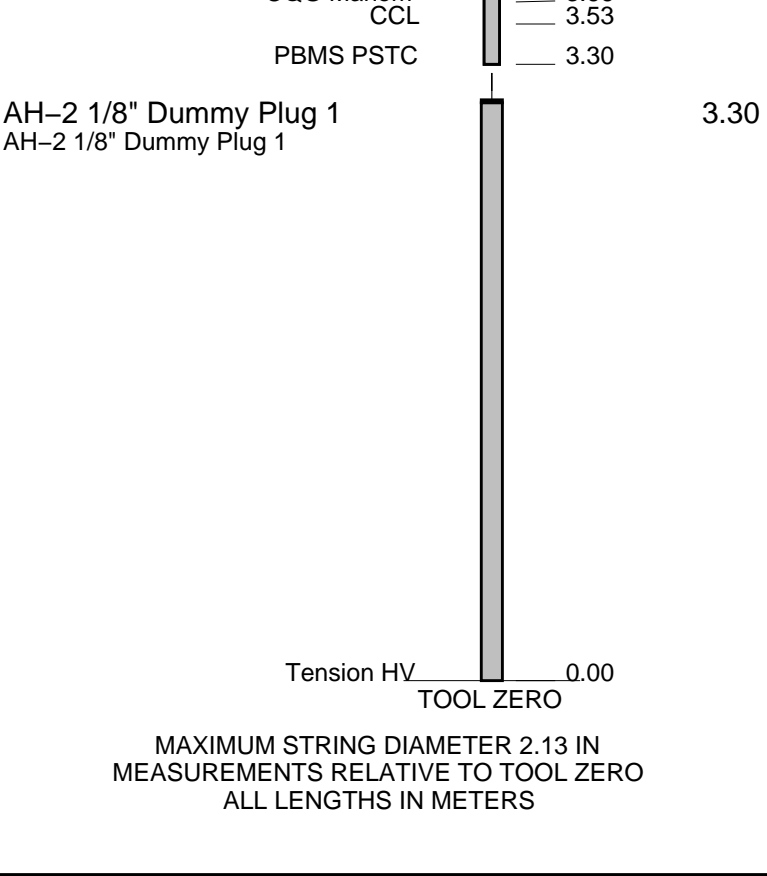
SBHT = 2043 psia.
SBHT = 211 degf.
Crew : Jake Annear & Andy Hall.

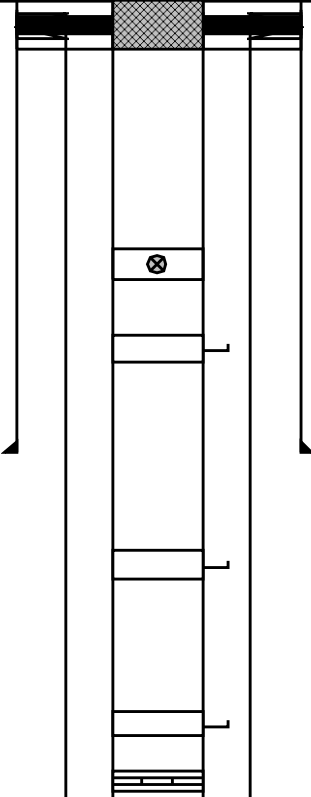
RUN 1			RUN 2		
SERVICE ORDER #:		AusI06328201			
PROGRAM VERSION:		14C0-302			
FLUID LEVEL:					
LOGGED INTERVAL	START	STOP	LOGGED INTERVAL	START	STOP

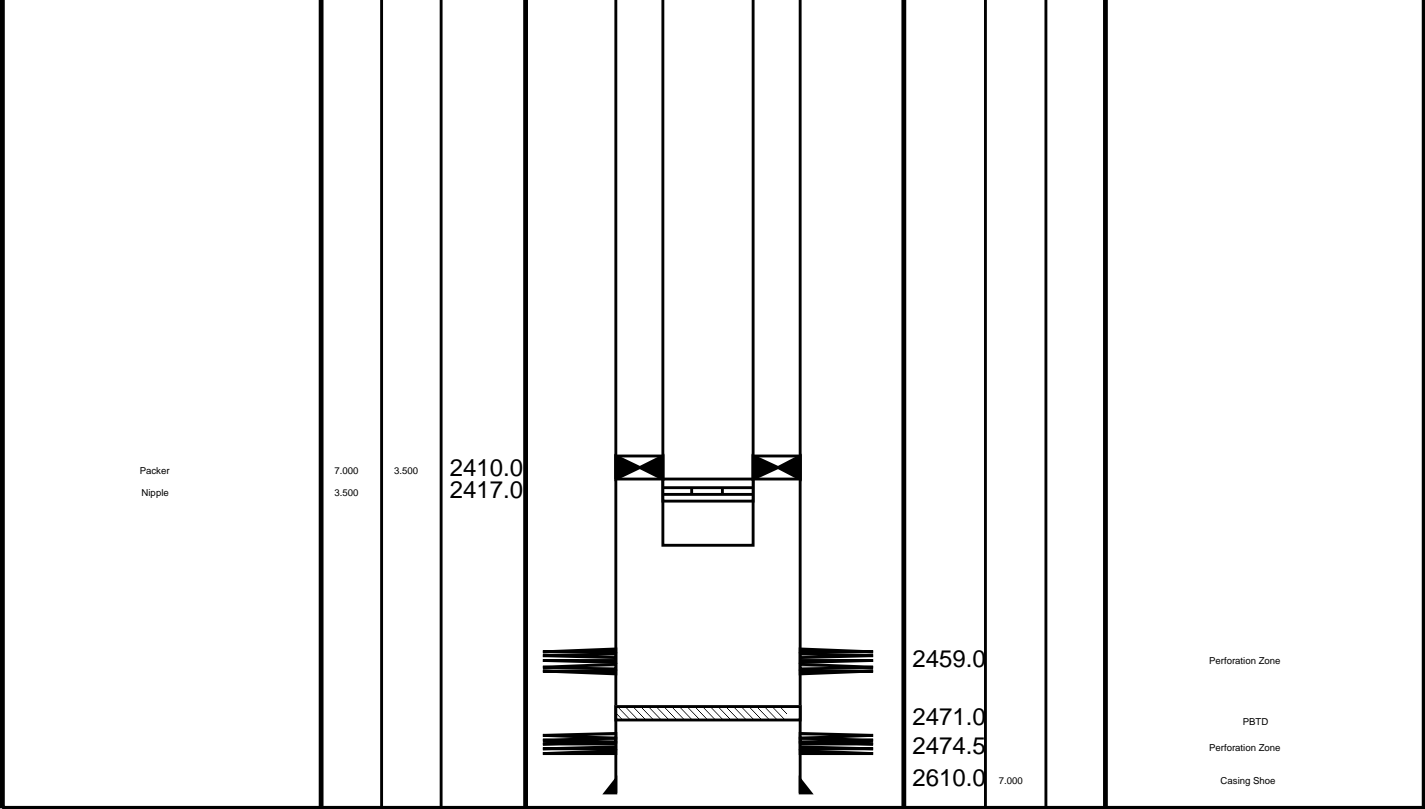
EQUIPMENT DESCRIPTION					
RUN 1			RUN 2		

SURFACE EQUIPMENT			SURFACE EQUIPMENT		
WITM-A			WITM (SHM) 3576		

DOWNHOLE EQUIPMENT			DOWNHOLE EQUIPMENT		
AH-SWBS 731		8.90	AH-SWBS-B 731		15.19
AH-SWBS 731			AH-SWBS-B 731		
AH-SWBS 761		8.21	AH-SWBS-B 762		14.50
AH-SWBS 761			AH-SWBS-B		
AH-SWBS 762		7.52	MH-SWHS-A 726		13.82
AH-SWBS 762			MH-SWHS-A 726		
AH-SWBS 763		6.84	CCL-L 4195 Tension CCL		13.49
AH-SWBS 763			CCL-L 4195		
MH-SWHS-A 726		6.15	SHM_GUN		13.03
MH-SWHS-A 726			GUN-HPI Setting Tool & PSP Plug		
PSPT-A/B 827		5.82			
PSC-A 806					
PSPT-B 827					
PSTC 806					
PBMS-B 827					
CQG_F_Mano 827					
RTD_Thermometer 827					
GR		4.69			
CCL 827					
PBMS 827					
Well_Temp		3.76			
CQG Manom		3.66			



Production String	(in)		(m)	Well Schematic	(m)	(in)		Casing String
	OD	ID	MD		MD	OD	ID	
Tubing Hanger Tubing	10.750 3.500	3.500	18.0 20.6		20.7 20.7 11.9	7.000 10.750 10.750	7.000	Casing String Liner Hanger Casing String
Shut-in Valve	3.500		453.7					
Gas Lift Mandrel	3.500		538.0					
					702.5	10.750		Casing Shoe
Gas Lift Mandrel	3.500		863.0					
Gas Lift Mandrel	3.500		1189.0					
Nipple	3.500		1205.0					



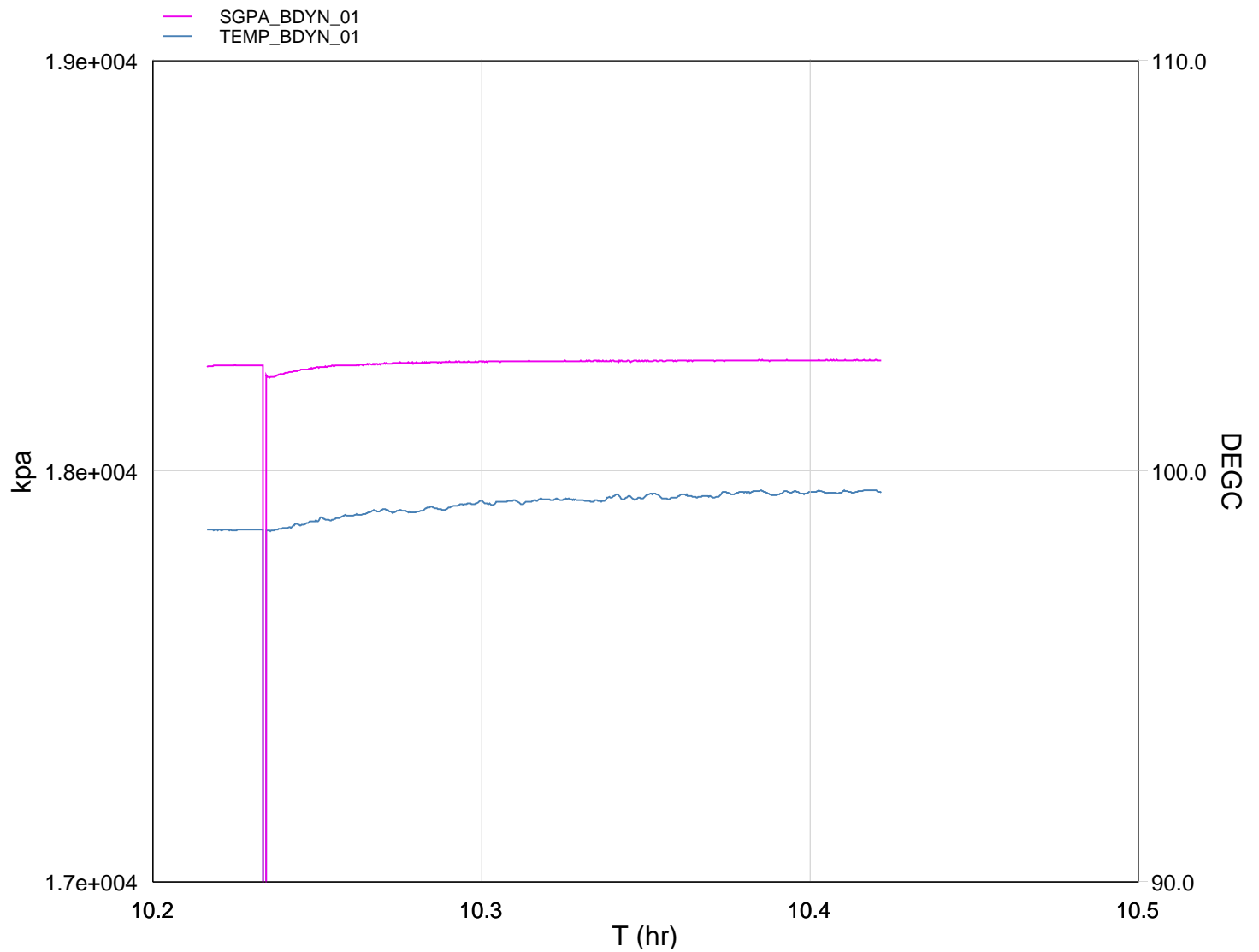
Schlumberger Job Event Summary

Time	Elapsed Time	Depth (M)	File
Log Pass (up)	23-Oct-2006 10:10 000:25	2464.5 - 2368.0	PERFO_037LUP
Station Log	23-Oct-2006 10:12 000:13	2454.7 - 1.9	PERFO_038LTP



GUN # 1
2459m to 2462m MDKB

MAXIS Field Log

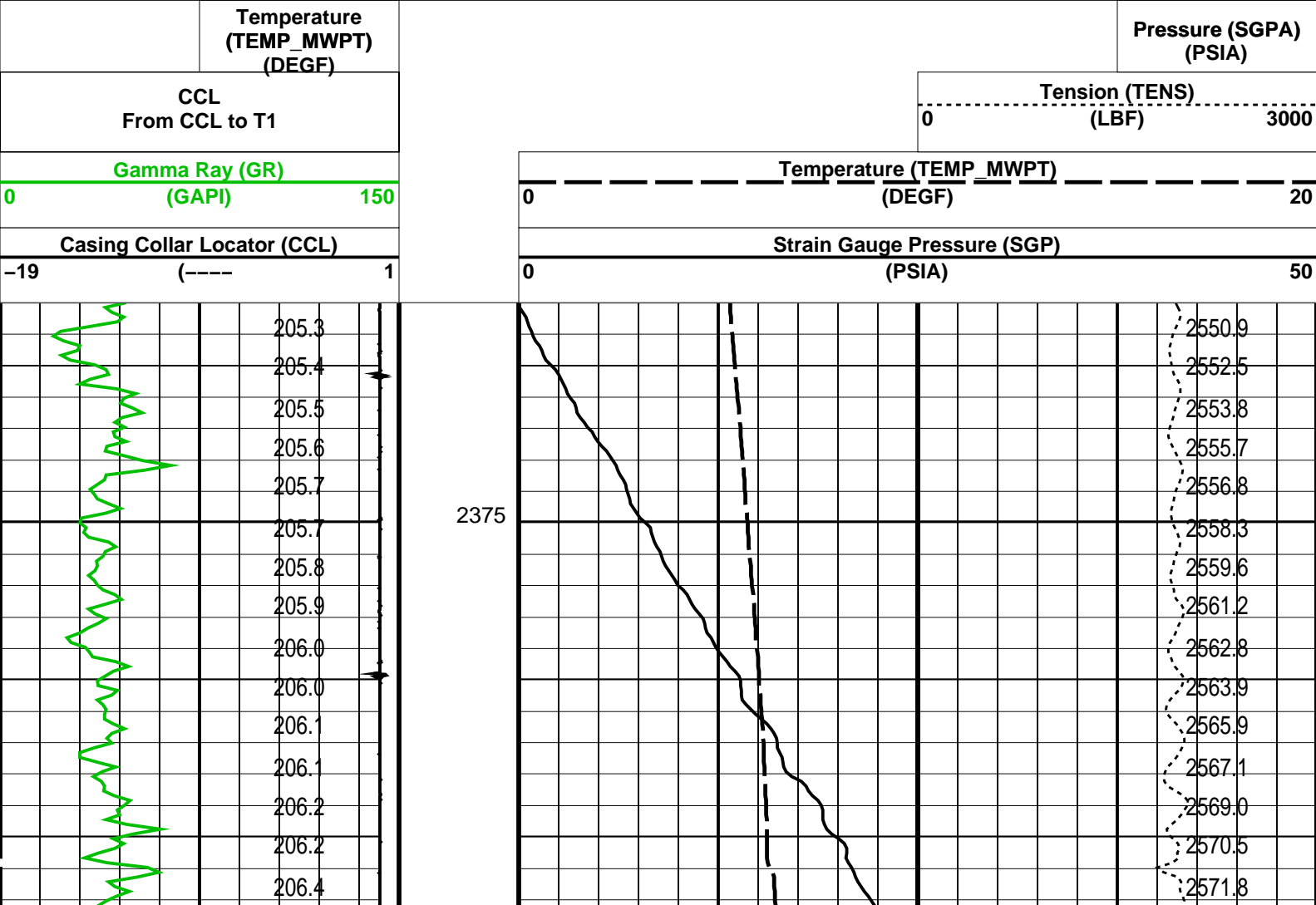


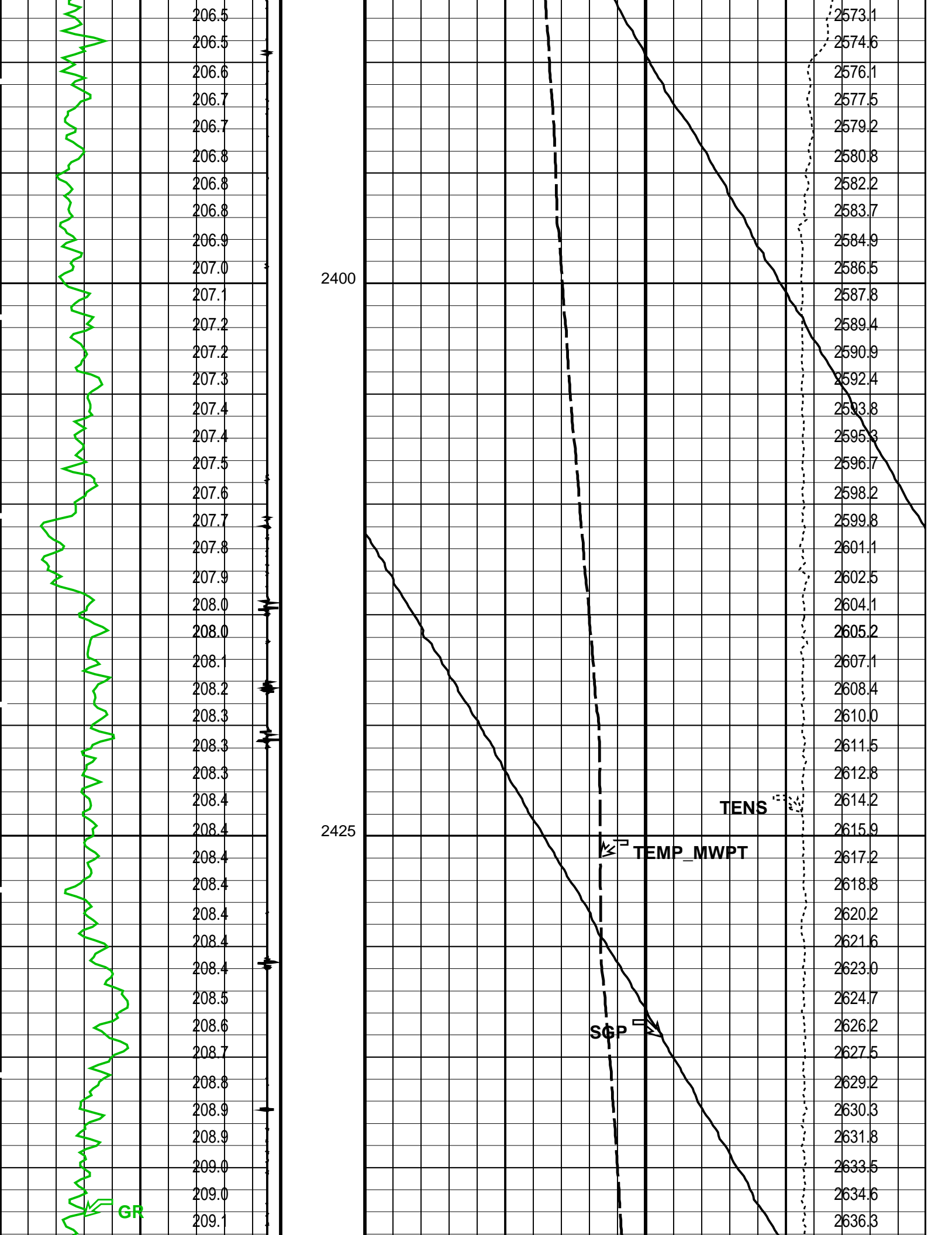
#	TIME	PSIA	DEGF
	140.0	2647.7913	209.4351
	160.0	2648.0161	209.4254
	180.0	2648.1445	209.4326
	200.0	2648.1445	209.4326
	220.0	2644.6487	209.4523
	240.0	2646.0952	209.6805
	260.0	2647.1515	209.8007
	280.0	2647.7923	209.8541
	300.0	2648.2077	210.0456
	320.0	2648.5626	210.1794
	340.0	2648.6908	210.3281
	360.0	2648.9473	210.2721
	380.0	2649.2028	210.2771
	400.0	2649.2371	210.3449
	420.0	2649.4557	210.5106
	440.0	2649.2070	210.6125
	460.0	2649.4630	210.6129
	480.0	2649.5301	210.7244
	500.0	2649.4682	210.6790
	520.0	2649.5311	210.7746
	540.0	2649.6494	210.7974
	560.0	2649.7180	210.7049
	580.0	2649.6162	210.7125

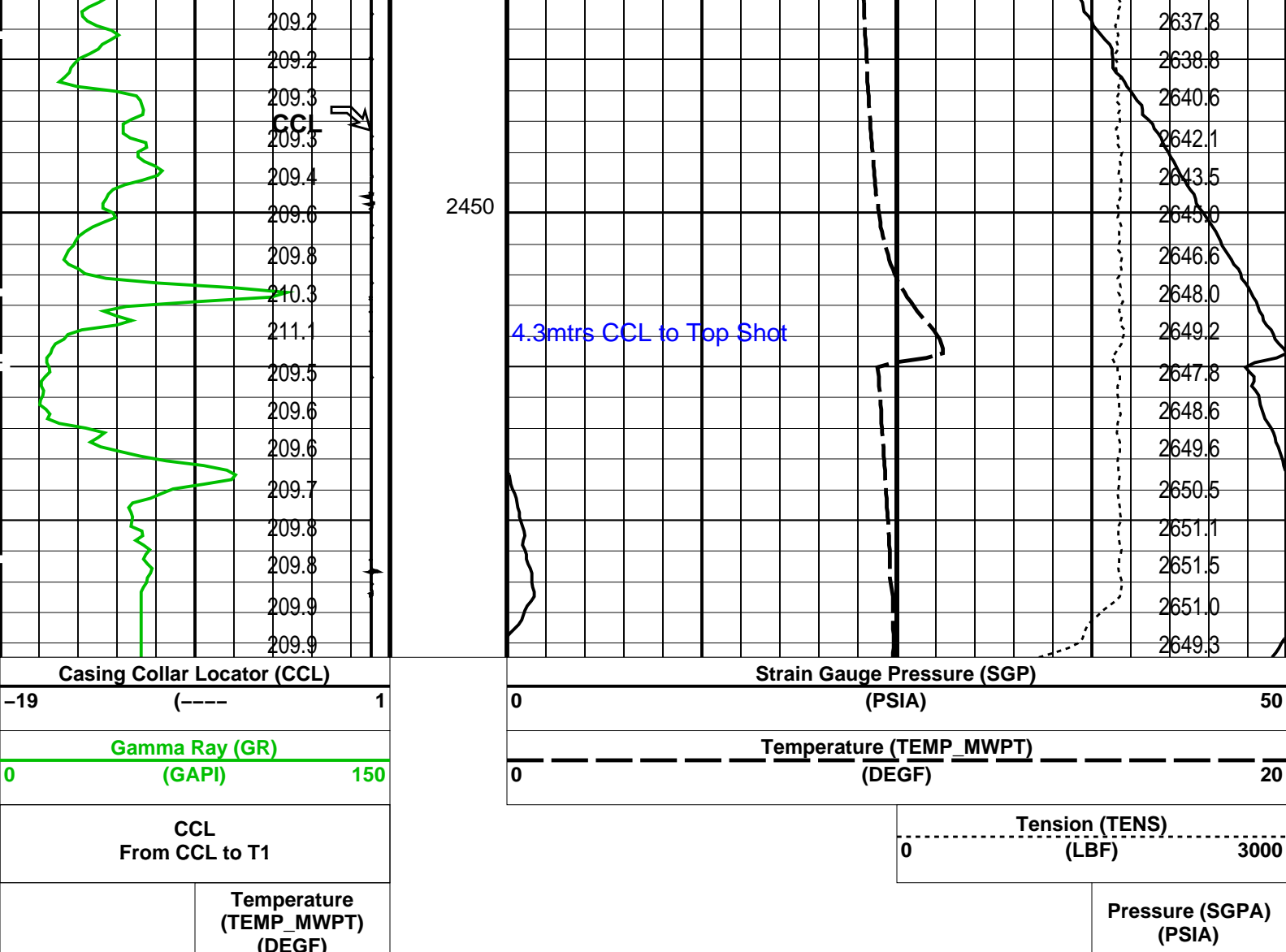
600.0	2649.6193	210.7874
620.0	2649.6884	210.8268
640.0	2649.8103	210.9306
660.0	2649.8410	210.8779
680.0	2649.7222	210.8678
700.0	2649.8722	210.8537
720.0	2649.9351	210.9998
740.0	2649.8145	211.0685
760.0	2649.7518	211.0115
780.0	2650.0669	211.1456
800.0	2649.9455	211.0195
820.0	2649.9715	211.0847
840.0	2649.9445	211.0520
860.0	2649.8503	211.1435
880.0	2649.8452	211.1116

Output DLIS Files			
DEFAULT	PERFO_037LUP	FN:35	PRODUCER 23-Oct-2006 10:10
OP System Version: 14C0-302			
MCM			
MWP_GUN	SRC-3220-WPP-AAP	MWPT-CA	SRC-3220-WPP-AAP
MWGT-BA	SRC-3220-WPP-AAP		

PIP SUMMARY	
<input type="checkbox"/> Time Mark Every 60 S	







PIP SUMMARY

Time Mark Every 60 S

Parameters			
DLIS Name	Description	Value	
MWPT-CA: MEASUREMENT WHILE PERFORATING TOOL			
DEVI_FL_CORR	Deviation Angle for Flow Line Correction	0	DEG
FLD	Flow Line Density	1	G/C3
MWPT_NULL_SOURCE	MWPT NULL Temperature Source	TEMS	
MWPT_NULL_TEMP	MWPT NULL Temperature	0.0	DEGC

Format: MWP Vertical Scale: 1:200 Graphics File Created: 23-Oct-2006 10:10

OP System Version: 14C0-302			
MCM			
MWP_GUN	SRC-3220-WPP-AAP\$	MWPT-CA	SRC-3220-WPP-AAP\$
MWGT-BA	SRC-3220-WPP-AAP\$		

Output DLIS Files			
DEFAULT	PERFO_037LUP	FN:35	PRODUCER 23-Oct-2006 10:10

Schlumberger Job Event Summary

Time	Elapsed	Depth	File
	Time	(M)	

Simulated Log 22-Oct-2006 10:39 000:01 PERFO_019LUP
Log Pass (down) 22-Oct-2006 11:16 000:32 4.1 - 2467.5 PERFO_020LDP
Log Pass (up) 22-Oct-2006 11:50 000:02 2467.4 - 2447.5 PERFO_021LUP
Log Pass (up) 22-Oct-2006 11:53 000:03 2468.1 - 2435.2 PERFO_022LUP
Log Pass (up) 22-Oct-2006 11:58 000:17 2470.1 - 2418.4 PERFO_023LUP
Log Pass (up) 22-Oct-2006 12:47 000:05 78.0 - -1.4 PERFO_024LUP

Schlumberger

Plug Setting Pass
Set @ 2471m MDKB

MAXIS Field Log

Output DLIS Files

DEFAULT PERFO_023LUP FN:22 PRODUCER 22-Oct-2006 11:58 2470.1 M 2418.4 M

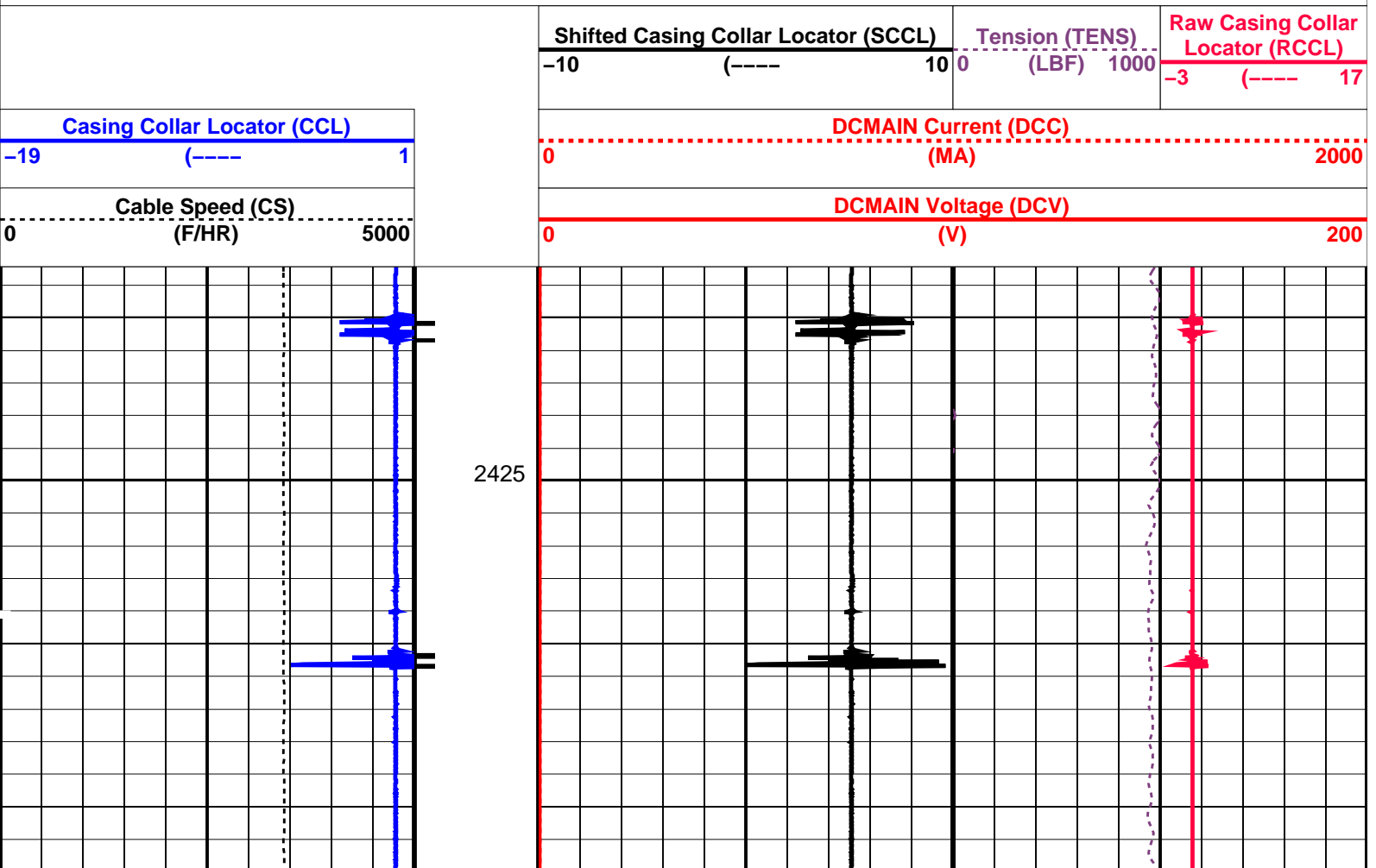
OP System Version: 14C0-302
MCM

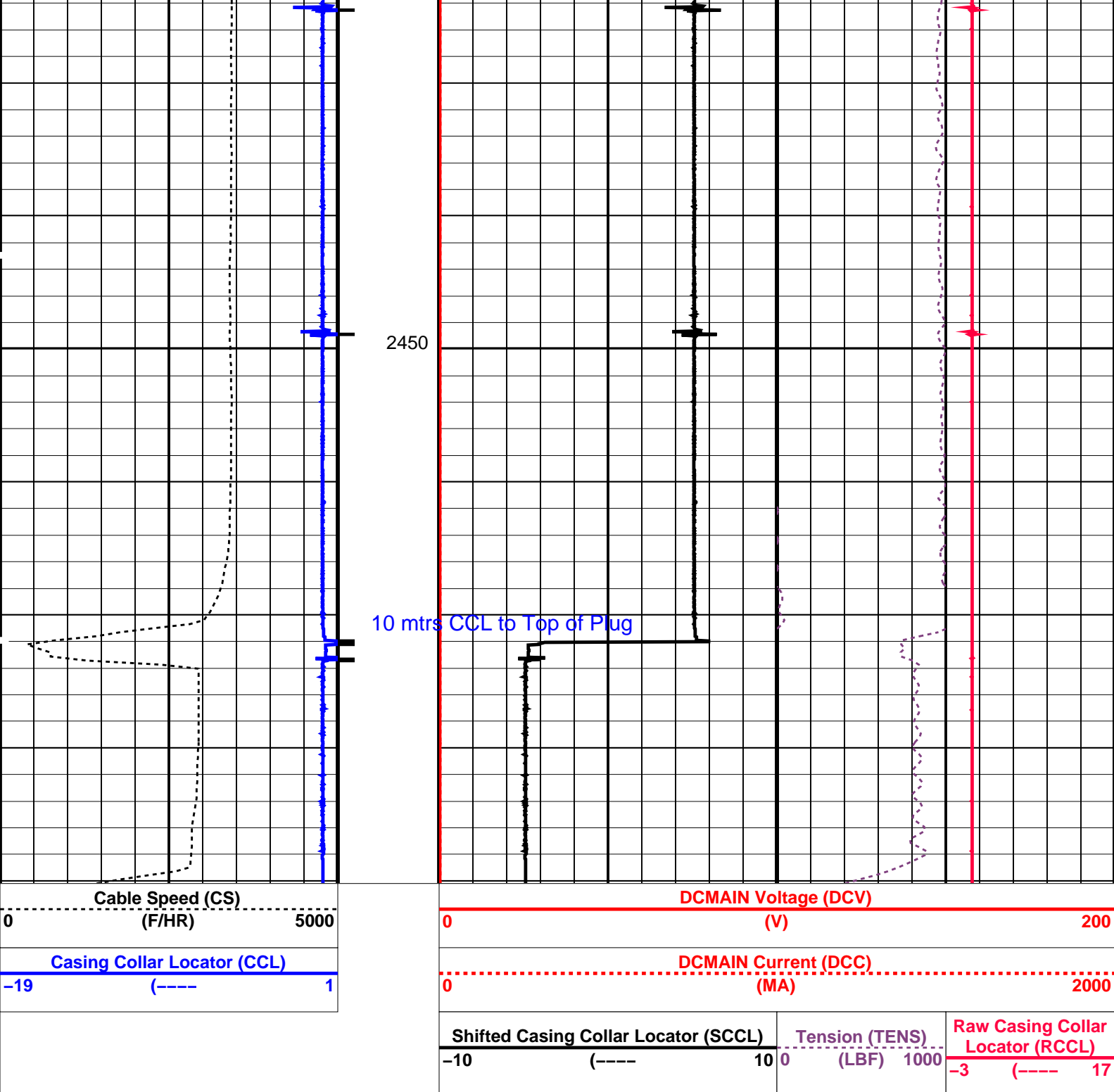
SHM_GUN SRC-3220-WPP-AAP5 CCL-L 14C0-302

PIP SUMMARY

└─ Casing Collars

Time Mark Every 60 S





PIP SUMMARY

Time Mark Every 60 S

Parameters

DLIS Name	Description	Value
CCL-L: Casing Collar Locator		
CCLD	CCL reset delay	12 IN
CCLT	CCL Detection Level	0.3 V

Format: PERFO Vertical Scale: 1:200

Graphics File Created: 22-Oct-2006 11:58

OP System Version: 14C0-302
MCM

SHM_GUN

SRC-3220-WPP-AAP5

CCL-L

14C0-302

Output DLIS Files

DEFAULT

PERFO_023LUP

FN:22

PRODUCER

22-Oct-2006 11:58



Plug Correlation Pass

MAXIS Field Log

Output DLIS Files

DEFAULT

PERFO_022LUP

FN:21

PRODUCER

22-Oct-2006 11:53

2468.1 M

2435.2 M

OP System Version: 14C0-302
MCM

SHM_GUN

SRC-3220-WPP-AAP5

CCL-L

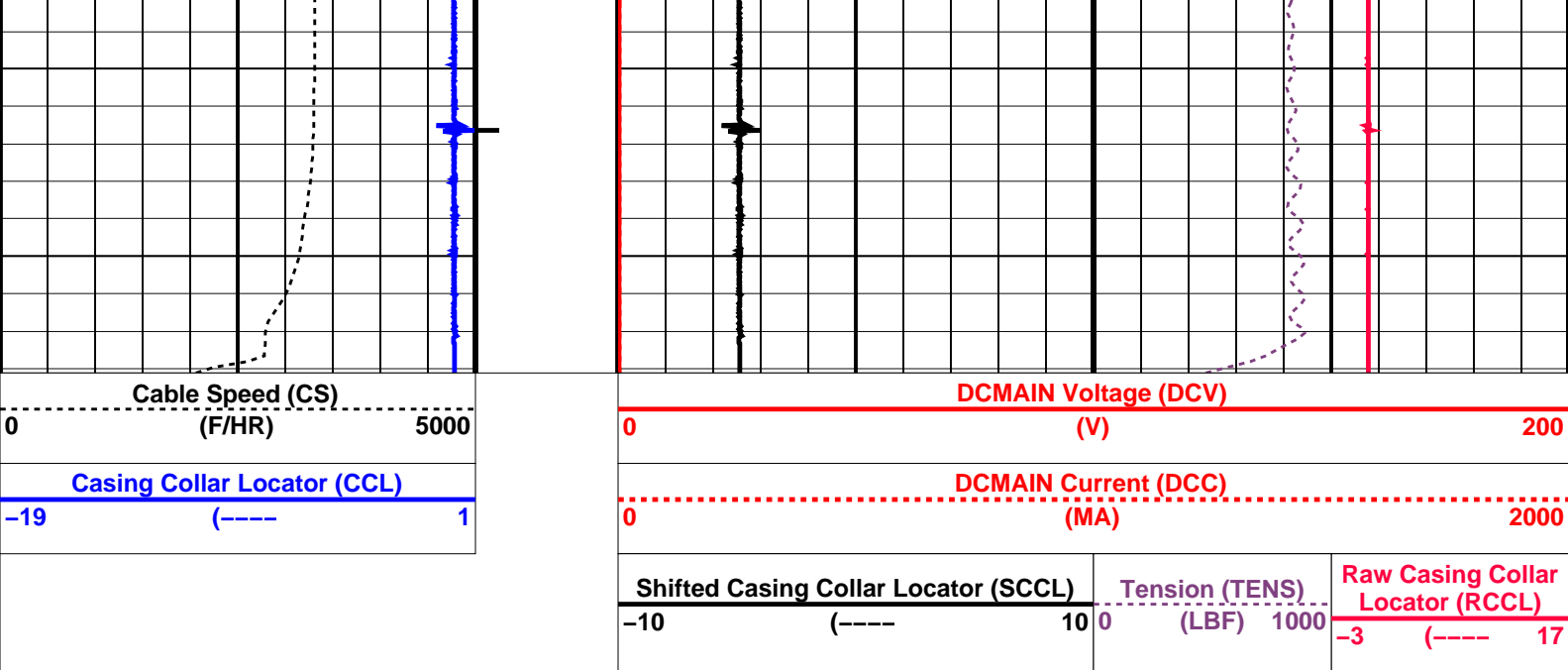
14C0-302

PIP SUMMARY

└─ Casing Collars

Time Mark Every 60 S

--	--	--	--	--	--	--	--	--	--	--	--	--	--	--	--	--	--	--	--	--	--	--	--	--	--	--	--	--	--	--	--	--	--	--	--	--	--	--	--	--	--	--	--	--	--	--	--	--	--	--	--	--	--	--	--	--	--	--	--	--	--	--	--	--	--	--	--	--	--	--	--	--	--	--	--	--	--	--	--	--	--	--	--	--	--	--	--	--	--	--	--	--	--	--	--	--	--	--	--	--	--	--	--	--	--	--	--	--	--	--	--	--	--	--	--	--	--	--	--	--	--	--	--	--	--	--	--	--	--	--	--	--	--	--	--	--	--	--	--	--	--	--	--	--	--	--	--	--	--	--	--	--	--	--	--	--	--	--	--	--	--	--	--	--	--	--	--	--	--	--	--	--	--	--	--	--	--	--	--	--	--	--	--	--	--	--	--	--	--	--	--	--	--	--	--	--	--	--	--	--	--	--	--	--	--	--	--	--	--	--	--	--	--	--	--	--	--	--	--	--	--	--	--	--	--	--	--	--	--	--	--	--	--	--	--	--	--	--	--	--	--	--	--	--	--	--	--	--	--	--	--	--	--	--	--	--	--	--	--	--	--	--	--	--	--	--	--	--	--	--	--	--	--	--	--	--	--	--	--	--	--	--	--	--	--	--	--	--	--	--	--	--	--	--	--	--	--	--	--	--	--	--	--	--	--	--	--	--	--	--	--	--	--	--	--	--	--	--	--	--	--	--	--	--	--	--	--	--	--	--	--	--	--	--	--	--	--	--	--	--	--	--	--	--	--	--	--	--	--	--	--	--	--	--	--	--	--	--	--	--	--	--	--	--	--	--	--	--	--	--	--	--	--	--	--	--	--	--	--	--	--	--	--	--	--	--	--	--	--	--	--	--	--	--	--	--	--	--	--	--	--	--	--	--	--	--	--	--	--	--	--	--	--	--	--	--	--	--	--	--	--	--	--	--	--	--	--	--	--	--	--	--	--	--	--	--	--	--	--	--	--	--	--	--	--	--	--	--	--	--	--	--	--	--	--	--	--	--	--	--	--	--	--	--	--	--	--	--	--	--	--	--	--	--	--	--	--	--	--	--	--	--	--	--	--	--	--	--	--	--	--	--	--	--	--	--	--	--	--	--	--	--	--	--	--	--	--	--	--	--	--	--	--	--	--	--	--	--	--	--	--	--	--	--	--	--	--	--	--	--	--	--	--	--	--	--	--	--	--	--	--	--	--	--	--	--	--	--	--	--	--	--	--	--	--	--	--	--	--	--	--	--	--	--	--	--	--	--	--	--	--	--	--	--	--	--	--	--	--	--	--	--	--	--	--	--	--	--	--	--	--	--	--	--	--	--	--	--	--	--	--	--	--	--	--	--	--	--	--	--	--	--	--	--	--	--	--	--	--	--	--	--	--	--	--	--	--	--	--	--	--	--	--	--	--	--	--	--	--	--	--	--	--	--	--	--	--	--	--	--	--	--	--	--	--	--	--	--	--	--	--	--	--	--	--	--	--	--	--	--	--	--	--	--	--	--	--	--	--	--	--	--	--	--	--	--	--	--	--	--	--	--	--	--	--	--	--	--	--	--	--	--	--	--	--	--	--	--	--	--	--	--	--	--	--	--	--	--	--	--	--	--	--	--	--	--	--	--	--	--	--	--	--	--	--	--	--	--	--	--	--	--	--	--	--	--	--	--	--	--	--	--	--	--	--	--	--	--	--	--	--	--	--	--	--	--	--	--	--	--	--	--	--	--	--	--	--	--	--	--	--	--	--	--	--	--	--	--	--	--	--	--	--	--	--	--	--	--	--	--	--	--	--	--	--	--	--	--	--	--	--	--	--	--	--	--	--	--	--	--	--	--	--	--	--	--	--	--	--	--	--	--	--	--	--	--	--	--	--	--	--	--	--	--	--	--	--	--	--	--	--	--	--	--	--	--	--	--	--	--	--	--	--	--	--	--	--	--	--	--	--	--	--	--	--	--	--	--	--	--	--	--	--	--	--	--	--	--	--	--	--	--	--	--	--	--	--	--	--	--	--	--	--	--	--	--	--	--	--	--	--	--	--	--	--	--	--	--	--	--	--	--	--	--	--	--	--	--	--	--	--	--	--	--	--	--	--	--	--	--	--	--	--	--	--	--	--	--	--	--	--	--	--	--	--	--	--	--	--	--	--	--	--	--	--	--	--	--	--	--	--	--	--	--	--	--	--	--	--	--	--	--	--	--	--	--	--	--	--	--	--	--	--	--	--	--	--	--	--	--	--	--	--	--	--	--	--	--	--	--	--	--	--	--	--	--	--	--	--	--	--	--	--	--	--	--	--	--	--	--	--	--	--	--	--	--	--	--	--	--	--	--	--	--	--	--	--	--	--	--	--	--	--	--	--	--	--	--	--	--	--	--	--	--	--	--	--	--	--	--	--	--	--	--	--	--	--	--	--	--	--	--	--	--	--	--	--	--	--	--	--	--	--	--	--	--	--	--	--	--	--	--	--	--	--	--	--	--	--	--	--	--	--	--	--	--	--	--	--	--	--	--	--	--	--	--	--	--	--	--	--	--	--	--	--	--	--	--	--	--	--	--	--	--	--	--	--	--	--	--	--	--	--	--	--	--	--	--	--	--	--	--	--	--	--	--	--	--	--	--	--	--	--	--	--	--	--	--	--	--	--	--	--	--	--	--	--	--	--	--	--	--	--	--	--	--	--	--	--	--	--	--	--	--	--	--	--	--	--	--	--	--	--	--	--	--	--	--	--	--	--	--	--	--	--	--	--	--	--	--	--	--	--	--	--	--	--	--	--	--	--	--	--	--	--	--	--	--	--	--	--	--	--	--	--	--	--	--	--	--	--	--	--	--	--	--	--	--	--	--	--	--	--	--	--	--	--	--	--	--	--	--	--	--	--	--	--	--	--	--	--	--	--	--	--	--	--	--	--	--	--	--	--	--	--	--	--	--	--	--	--	--	--	--	--	--	--	--	--	--	--	--	--	--	--	--	--	--	--	--	--	--	--	--	--	--	--	--	--	--	--	--	--	--	--	--	--	--	--	--	--	--	--	--	--	--	--	--	--	--	--	--	--	--	--



PIP SUMMARY

Time Mark Every 60 S


Casing Collars

Parameters		
DLIS Name	Description	Value
CCL-L: Casing Collar Locator		
CCLD	CCL reset delay	12 IN
CCLT	CCL Detection Level	0.3 V

Format: PERFO Vertical Scale: 1:200 Graphics File Created: 22-Oct-2006 11:53

OP System Version: 14C0-302			
MCM			
SHM_GUN	SRC-3220-WPP-AAP	CCL-L	14C0-302

Output DLIS Files			
DEFAULT	PERFO_022LUP	FN:21 PRODUCER	22-Oct-2006 11:53



2 1/8" Dummy Plug Pass

MAXIS Field Log

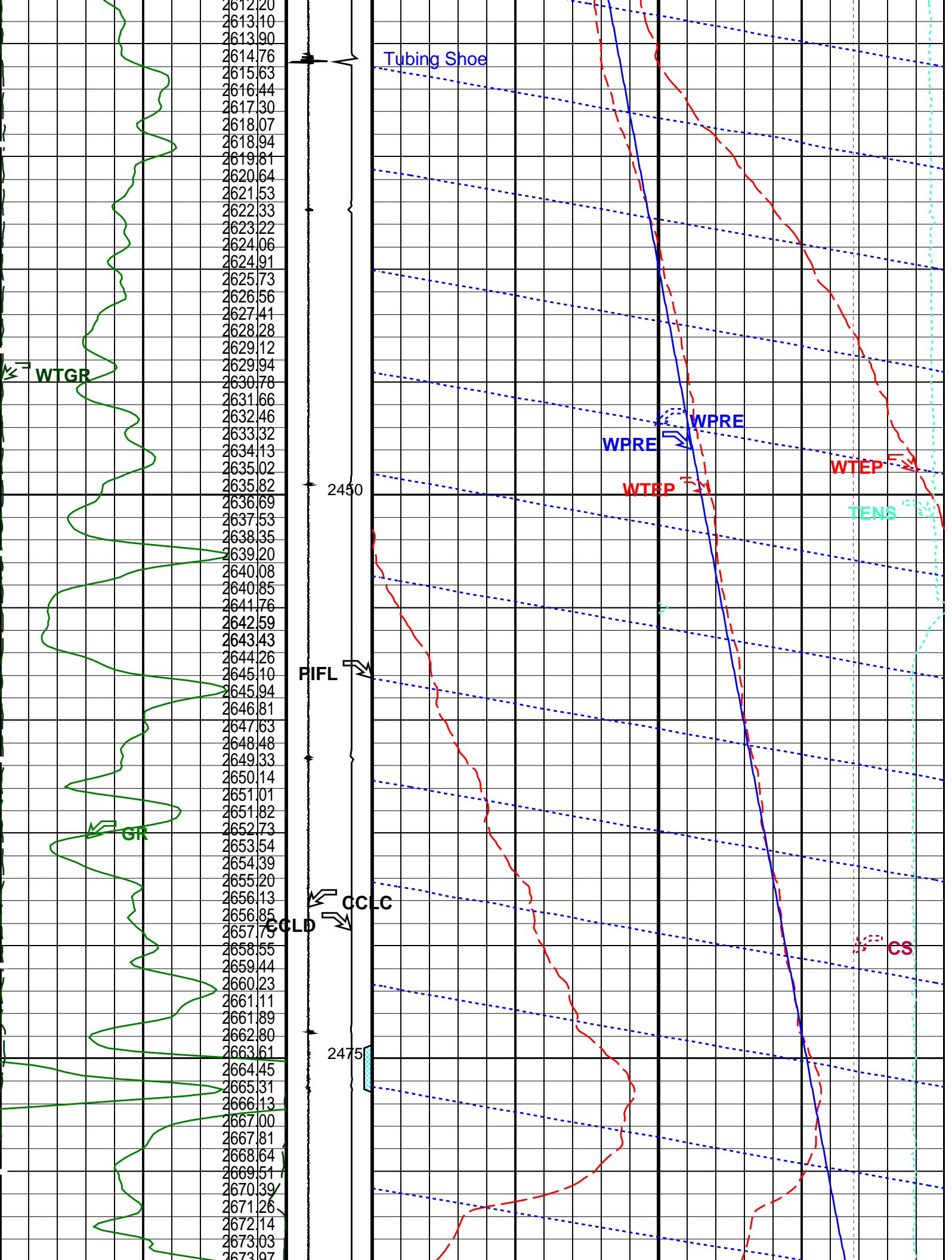
Input DLIS Files					
DEFAULT	PSP_007LUP	FN:6	PRODUCER	21-Oct-2006 13:51	2504.1 M 2394.5 M
Output DLIS Files					
DEFAULT	PSP_008PUP	FN:7	PRODUCER	21-Oct-2006 14:08	2507.7 M 2396.0 M

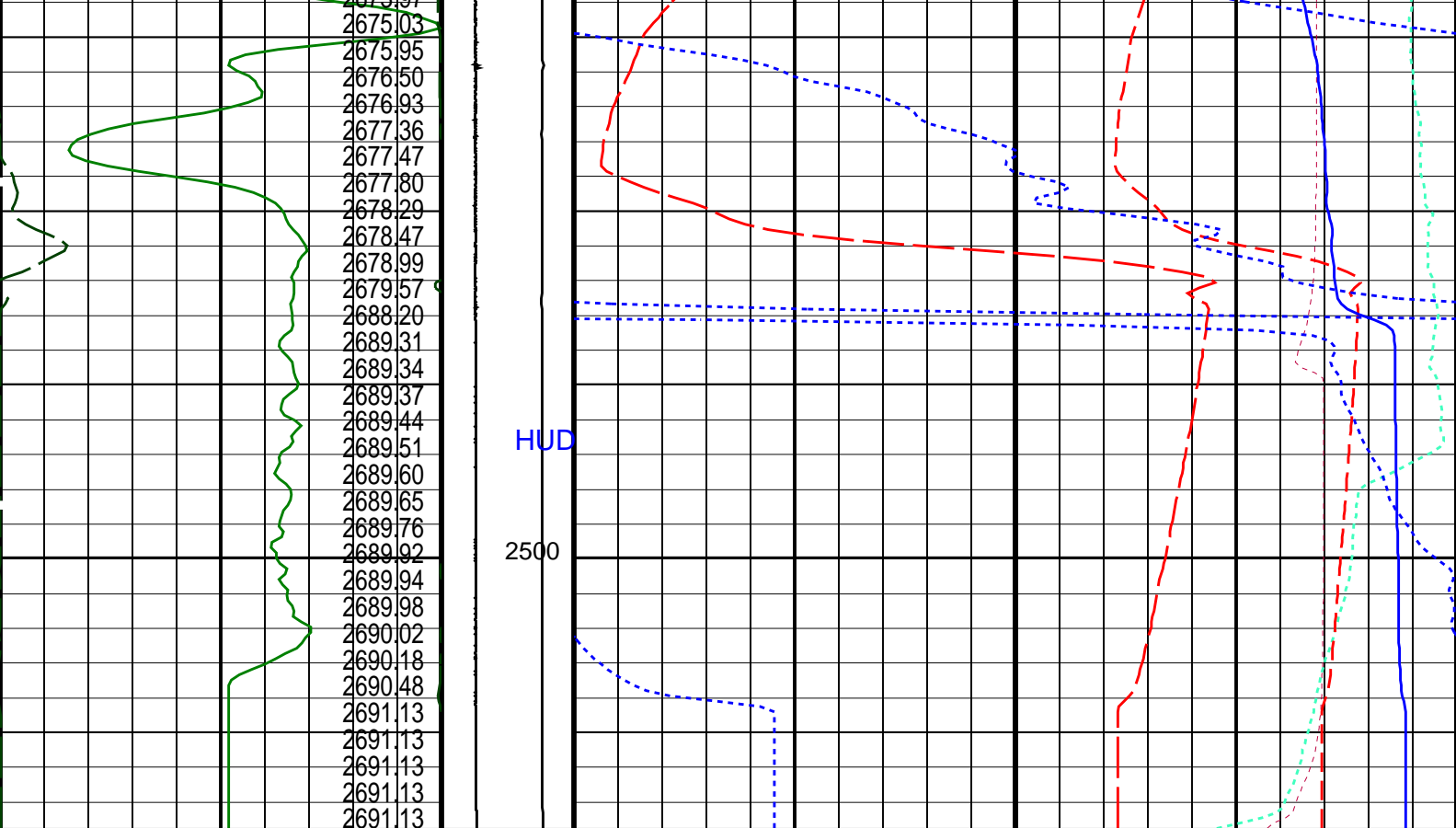
OP System Version: 14C0-302

MCM

Time Mark Every 60 S

		Cable Speed (CS)	
		0	5000 (F/HR)
		Tension (TENS) (LBF)	
		0	2000
		Amplified Well Pressure (WPRE) (PSIA)	
		0	5
		Well Pressure (WPRE) (PSIA)	
		2550	2700
		Well Temperature (WTEP) (DEGF)	
		0	2
		Well Temperature (WTEP) (DEGF)	
		209	214
		Well Temperature Gradient (WTGR) (DGFM)	
		0	10
		Gamma Ray (GR) (GAPI)	
		0	150
		Perfo Zone From PERFO_CURVE to D3T	
		Computed CCL (CCLC) 1 (V) -3	
		Discriminat ed CCL (CCLD) 3 (V) -1	





Gamma Ray (GR) (GAPI)		Discriminat ed CCL (CCLD)	Well Temperature (WTEP) (DEGF)	
0	150	3 (V) -1	209	214
Well Temperature Gradient (WTGR) (DGFM)		Computed CCL (CCLC)	Well Temperature (WTEP) (DEGF)	
0	10	1 (V) -3	0	2
	Well Pressure (WPRE) (PSIA)	Perfo Zone From PERFO_ CURVE to D3T	Well Pressure (WPRE) (PSIA)	
			2550	2700
			Amplified Well Pressure (WPRE) (PSIA)	
			0	5
			Tension (TENS) (LBF)	
			0	2000
			Cable Speed (CS) (F/HR)	
			0	5000

PIP SUMMARY

☒ Time Mark Every 60 S

Format: PSP_1_1 Vertical Scale: 1:200 Graphics File Created: 21-Oct-2006 14:08

OP System Version: 14C0-302

MCM

PSPT-A/B 14C0-302

Parameters		
DLIS Name	Description	Value
System and Miscellaneous		
Depth Offset for Playback		2.6 M

DO PP	Depth Offset for Playback Playback Processing	3.6 NORMAL	M
Input DLIS Files			
DEFAULT	PSP_007LUP	FN:6	PRODUCER 21-Oct-2006 13:51 2504.1 M 2394.5 M
Output DLIS Files			
DEFAULT	PSP_008PUP	FN:7	PRODUCER 21-Oct-2006 14:08

Company:	Esso Australia Ltd.	Schlumberger
Well:	B-7	
Field:	Bream B	
Rig:	Prod4	
Country:	Australia	
	7" HPI PSP Plug	
	2 1/8"Phased Powerjet	
	Perforation	