



Company: Esso Australia Pty Ltd.

Well: B-5  
Field: Bream B  
Rig : Prod4

Country: Australia

Prod4  
Bream B  
Gippsland  
B-5  
Esso Australia Pty Ltd.

2 1/8"Phased Powerjet MWPT Perforation 7"HPI PSP Plug			LOCATION	
			Gippsland	Elev.: K.B.
			Basin	G.L. -61 m
			Bass Strait	D.F. 47.1 m
			Permanent Datum:	M.S.L.
Log Measured From:	D.F.	47.1 m	above Perm. Datum	
Drilling Measured From:	D.F.			
State: Victoria	Max. Well Deviation 69 deg	Longitude 147 50'16.81"E	Latitude 038 31'10.90"S	
Logging Date	12-Oct-2006			
Run Number	1 thru 3			
Depth Driller	3450 m			
Schlumberger Depth	3450 m			
Bottom Log Interval	3450 m			
Top Log Interval	3370 m			
Casing Fluid Type	Production Fluids			
Salinity				
Density				
Fluid Level				
BIT/CASING/TUBING STRING				
Bit Size	8.500 in			
From				
To				
Casing/Tubing Size	7.000 in			
Weight	26 lbn/ft			
Grade	N-80			
From	20.95 m			
To	3604 m			
Maximum Recorded Temperatures	209 degf			
Logger On Bottom	13-Oct-2006	14:00		
Unit Number	889	Prod4 / Ausl		
Recorded By	S Gilbert			
Witnessed By	G Rimmer			

PVT DATA			Run 1
Oil Density			
Water Salinity			
Gas Gravity			
Bo			
Bw			
1/Bg			
Bubble Point Pressure			
Bubble Point Temperature			
Solution GOR			
Maximum Deviation	69 deg		
CEMENTING DATA			
Primary/Squeeze	Primary		
Casing String No			
Lead Cement Type			
Volume			
Density			
Water Loss			
Additives			
Tail Cement Type			
Volume			
Density			
Water Loss			
Additives			
Expected Cement Top			
Logging Date			
Run Number			
Depth Driller			
Schlumberger Depth			
Bottom Log Interval			
Top Log Interval			
Casing Fluid Type			
Salinity			
Density			
Fluid Level			
BIT/CASING/TUBING STRING			
Bit Size			
From			
To			
Casing/Tubing Size			
Weight			
Grade			
From			
To			
Maximum Recorded Temperatures			
Logger On Bottom			
Unit Number			
Recorded By			
Witnessed By			

## DEPTH SUMMARY LISTING

### Depth System Equipment

Date Created: 05-Oct-2006 12:10:45

#### Depth Measuring Device

Type: IDW-EB  
Serial Number: 6373  
Calibration Date: 28-SEP-2006  
Calibrator Serial Number: 1009  
Calibration Cable Type: 2-32ZT  
Wheel Correction 1: -2  
Wheel Correction 2: -2

#### Tension Device

Type: CMTD-B/A  
Serial Number: 949  
Calibration Date: 28-SEP-2006  
Calibrator Serial Number: 1174  
Calibration Gain: 1.01  
Calibration Offset: 195.00

#### Logging Cable

Type: 2-32ZT  
Serial Number: 24425  
Length: 6600.00 M  
Conveyance Method: Wireline  
Rig Type: Offshore\_Mobile

### Depth Control Parameters

Log Sequence: Subsequent Log In the Well  
Reference Log Name: Solar composite.  
Reference Log Run Number: 1  
Reference Log Date:

### Depth Control Remarks

1. Correlated to Solar composite log supplied with program.
2. IDW-EB 6373 used as primary depth control.
3. Z-chart used as back-up.
- 4.
- 5.
- 6.

#### DISCLAIMER















THE USE OF AND RELIANCE UPON THIS RECORDED-DATA BY THE HEREIN NAMED COMPANY (AND ANY OF ITS AFFILIATES, PARTNERS, REPRESENTATIVES, AGENTS, CONSULTANTS AND EMPLOYEES) IS SUBJECT TO THE TERMS AND CONDITIONS AGREED UPON BETWEEN SCHLUMBERGER AND THE COMPANY, INCLUDING: (a) RESTRICTIONS ON USE OF THE RECORDED-DATA; (b) DISCLAIMERS AND WAIVERS OF WARRANTIES AND REPRESENTATIONS REGARDING COMPANY'S USE OF AND RELIANCE UPON THE RECORDED-DATA; AND (c) CUSTOMER'S FULL AND SOLE RESPONSIBILITY FOR ANY INFERENCE DRAWN OR DECISION MADE IN CONNECTION WITH THE USE OF THIS RECORDED-DATA.

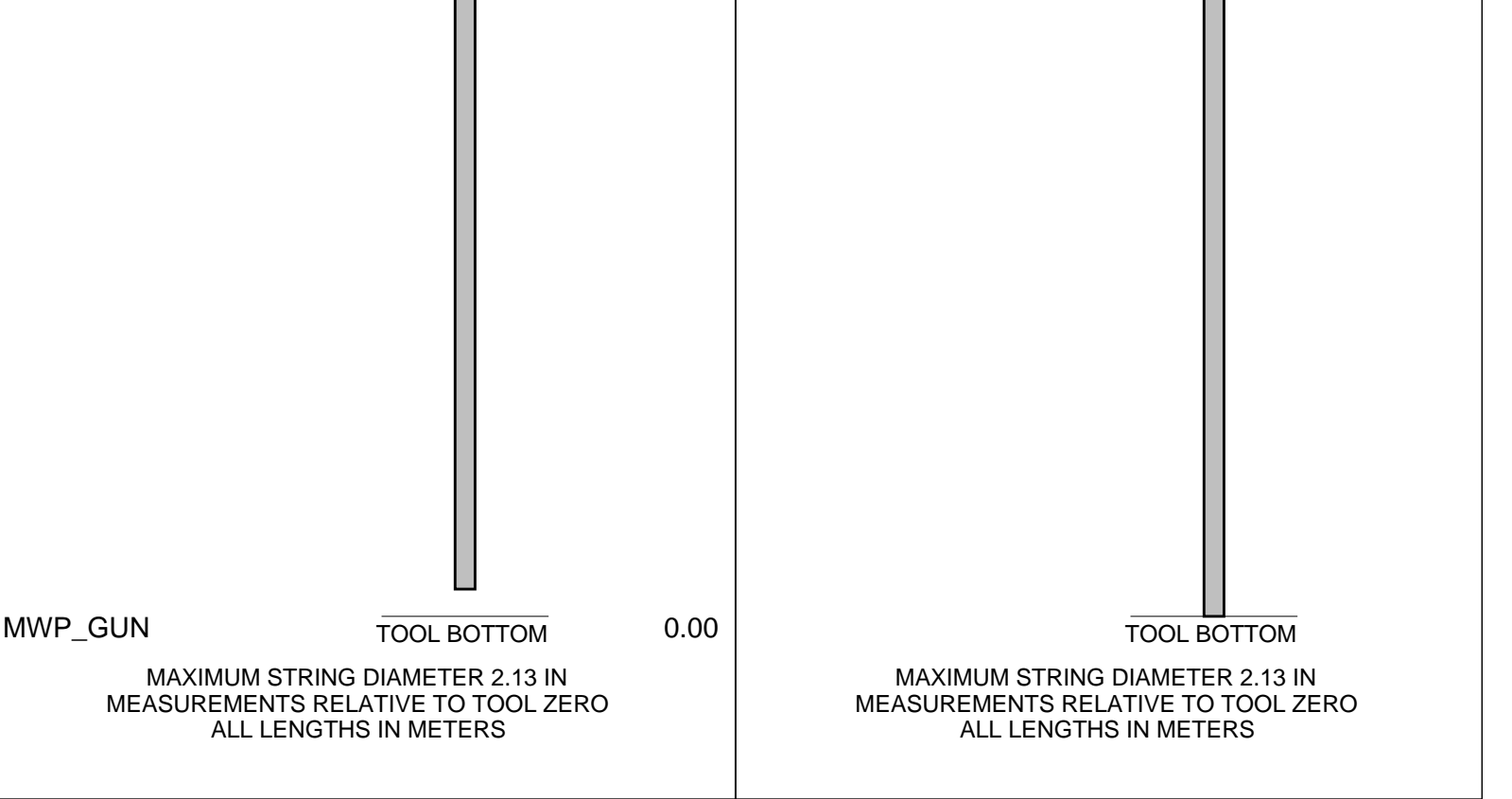
#### OTHER SERVICES1

OS1: None  
OS2:  
OS3:  
OS4:  
OS5:

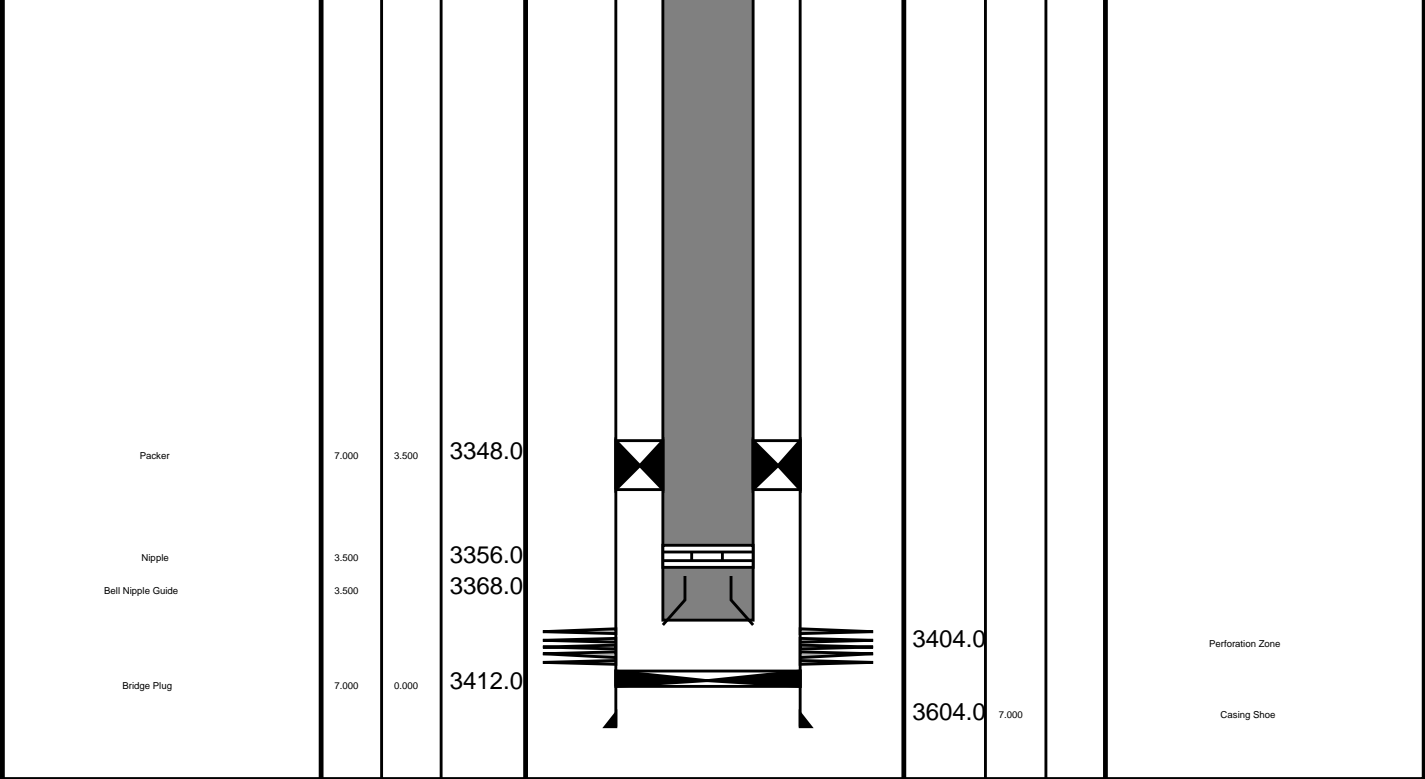
#### REMARKS: RUN NUMBER 1

Log correlated to ExxonMobil composite supplied with program.  
Maximum well deviation 69 degrees at 1893m MDKB.  
Perforated interval was 3393m to 3398m MDKB, 2 1/8" 6spf,  
45 degree phased Powerjet with MWPT used for this perforation.  
SBHP = 2650 psia, SBHT = 209 degf.  
GUN : CCL to Top Shot : 3.45m  
CCL Stop Depth : 3389.55m MDKB  
HPL PSD Plug to be set @ 3402m MDKB

HPI PSP Plug to be set @ 3402m MDKB						
PLUG : CCL To Top of Seal : 10m						
CCL Stop Depth : 3392m MDKB						
Crew : Jake Annear & John Light.						
RUN 1						
SERVICE ORDER #:		AusI06328194				
PROGRAM VERSION:		14C0-302				
FLUID LEVEL:						
LOGGED INTERVAL	START	STOP	LOGGED INTERVAL	START	STOP	
EQUIPMENT DESCRIPTION						
RUN 1			RUN 2			
SURFACE EQUIPMENT			SURFACE EQUIPMENT			
MWPM-AA			WITM (SHM)			
DOWNHOLE EQUIPMENT			DOWNHOLE EQUIPMENT			
AH-SWBS-B 731		12.51	AH-SWBS-B 731		14.86	
AH-SWBS-B		11.82	AH-SWBS-B		14.17	
MH-SWHS-A 726		11.14	MH-SWHS-A 726		13.49	
MWGT-AA		10.81	CCL-L		13.16	
MWPG-AA			Tension CCL			
MWGH-AA		2.41	TOOL ZERO			
MWPT-CA		9.83	GUN-HPI Plug and Setting Tool		12.70	
MWPH-AA						
MWPS-AA						
						
						
						
AH-5 mtr 2 1/8" Phased Powerjet Gun		7.01				



Production String	(m)		MD	Well Schematic	MD	(m)		Casing String
	OD	ID				OD	ID	
Tubing	3.500		20.3		20.8	10.750		Casing String
Tubing Hanger	7.000	3.500	20.3		20.7	7.000		Casing String
					20.7	10.750	7.000	Liner Hanger
SSSV	3.500		445.0					
Gas Lift Mandrel	3.500		513.0					
					954.0	10.750		Casing Shoe
Gas Lift Mandrel	3.500		733.0					
Gas Lift Mandrel	3.500		876.0					
Nipple	3.500		894.0					



## Job Events Summary

MAXIS Field Log

### Schlumberger Job Event Summary

Time	Elapsed Time	Depth (M)	File
Log Pass (up)	13-Oct-2006 13:36	000:09	3412.2 - 3319.6 PSP_012LUP
Log Pass (up)	14-Oct-2006 11:54	000:07	3402.2 - 3349.1 PERFO_030LUP
Log Pass (up)	14-Oct-2006 12:09	000:15	3401.3 - 3348.1 PERFO_032LUP
Station Log	14-Oct-2006 12:11	000:09	3389.5 - 1.3 PERFO_033LTP
Log Pass (up)	15-Oct-2006 10:12	000:18	3394.1 - 3340.6 PERFO_062LUP

Output DLIS Files

DEFAULT      PERFO\_062LUP      FN:61      PRODUCER      15-Oct-2006 10:12      3394.1 M      3340.6 M

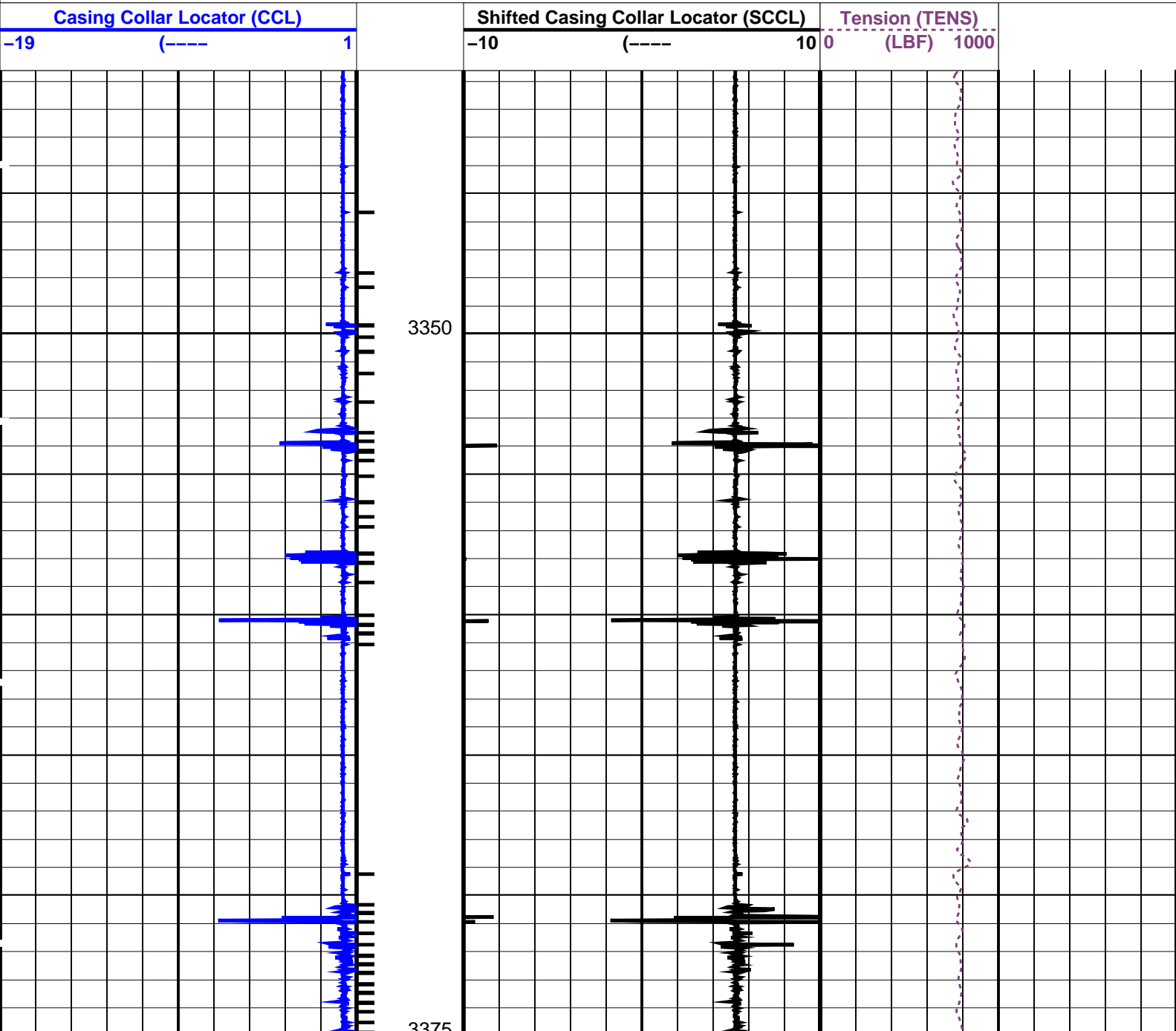
OP System Version: 14C0-302  
MCM

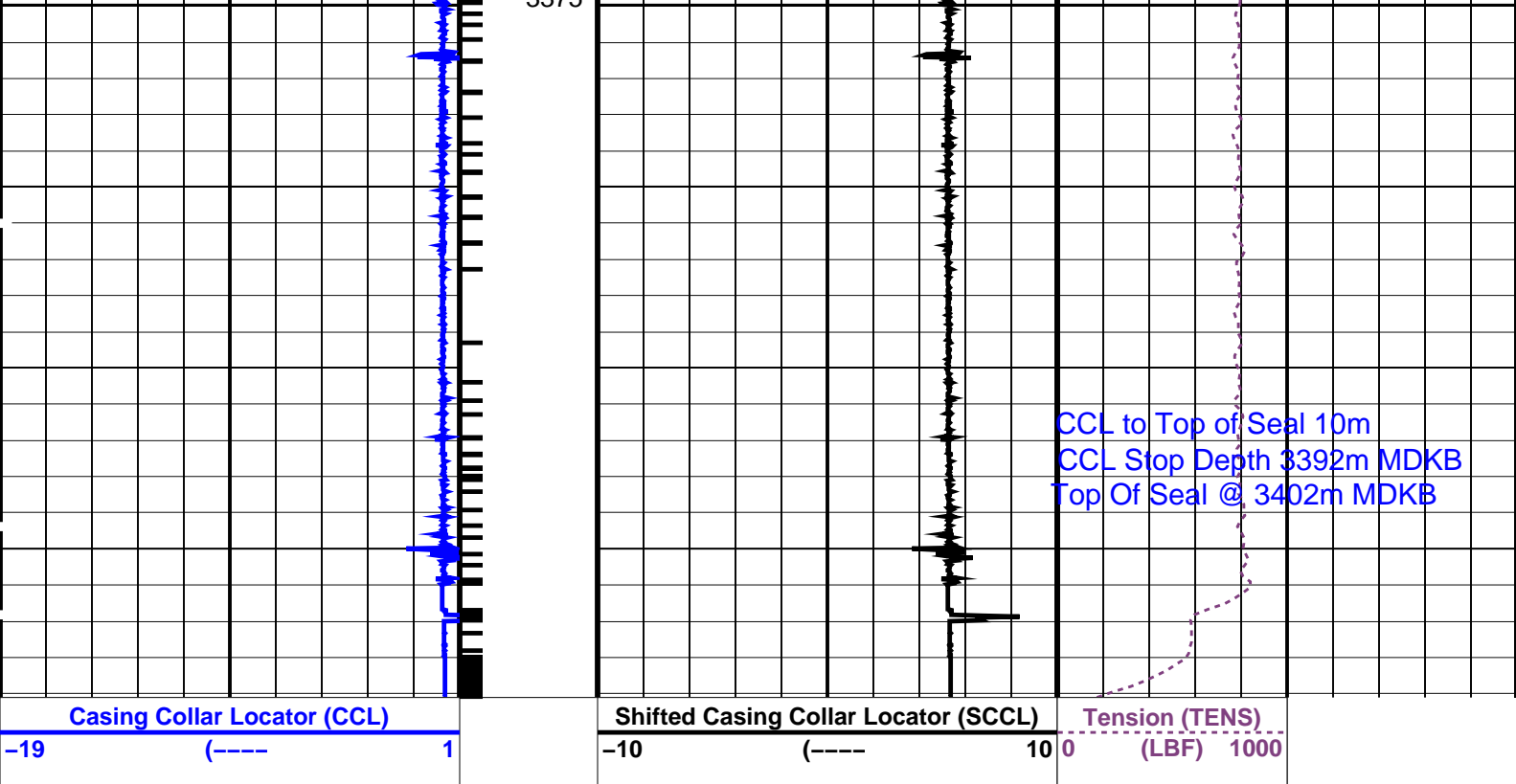
SHM\_GUN      SRC-3220-WPP-AAP5      CCL-L      14C0-302

PIP SUMMARY

└─ Casing Collars

 Time Mark Every 60 S





PIP SUMMARY

Time Mark Every 60 S

Parameters

DLIS Name	Description	Value
CCLD	CCL-L: Casing Collar Locator	12 IN
CCLT	CCL reset delay	0.3 V
	CCL Detection Level	

Format: PERFO Vertical Scale: 1:200 Graphics File Created: 15-Oct-2006 10:12

OP System Version: 14C0-302  
MCM

SHM\_GUN SRC-3220-WPP-AAP5 CCL-L 14C0-302

Output DLIS Files

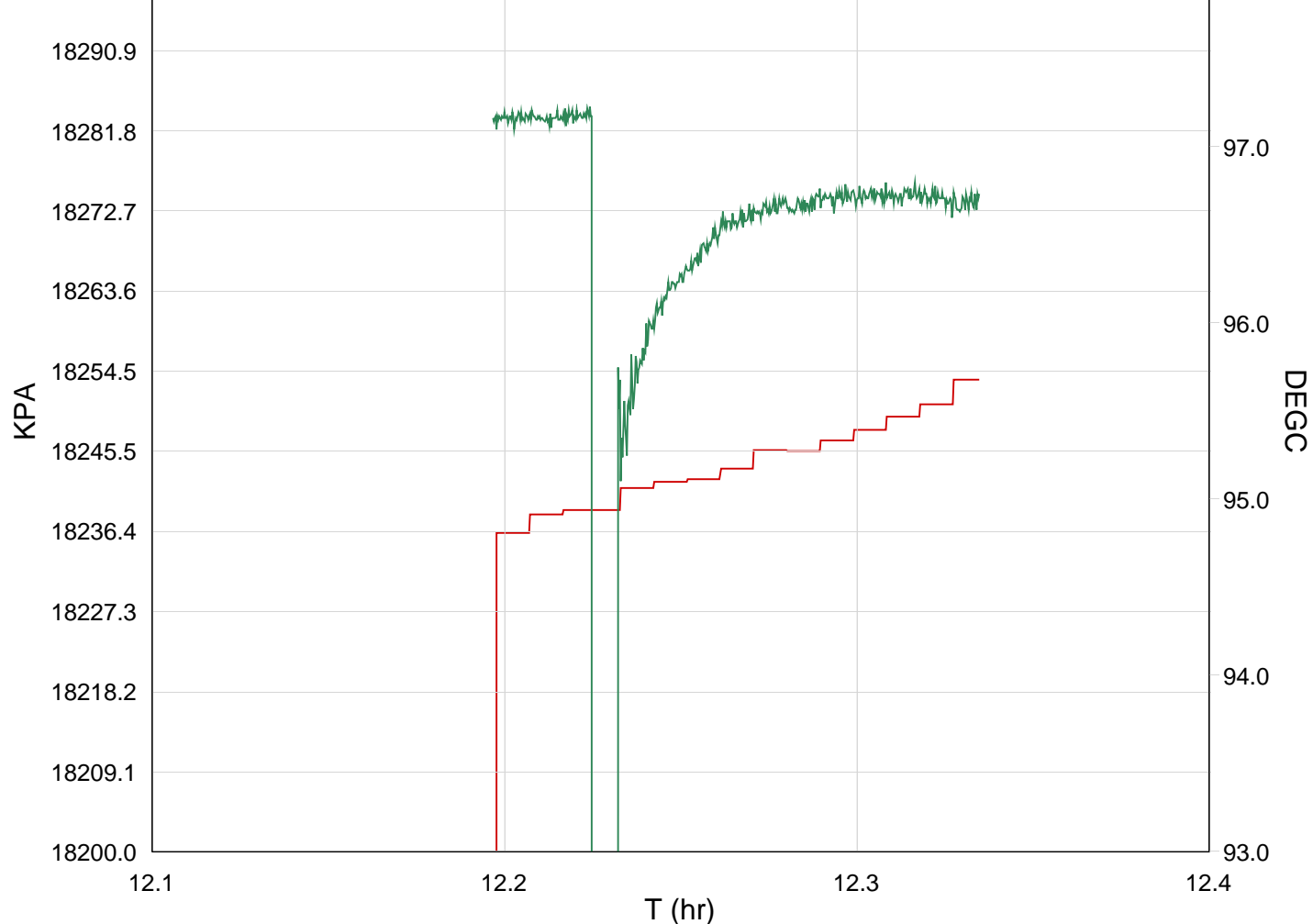
DEFAULT PERFO\_062LUP FN:61 PRODUCER 15-Oct-2006 10:12

Schlumberger

Gun # 1 Fired  
@ 3393m MDKB to 3398m MDKB

MAXIS Field Log





TIME	SGP_SL	TEMP_MWPT_SL
4080.0	2651.7400	208.5318
4110.0	2651.8896	208.5429
4140.0	2651.8121	208.5309
4170.0	2651.7670	208.5260
Gun Fired –		
4230.0	2648.8142	210.0588
4260.0	2650.0615	210.1311
4290.0	2650.5057	209.8093
4320.0	2650.9987	209.6203
4350.0	2651.2334	209.5114
4380.0	2651.3770	209.4877
4410.0	2651.3260	209.5620
4440.0	2651.4806	209.9406
4470.0	2651.5184	210.4468
4500.0	2651.4903	210.8631
4530.0	2651.6039	211.2397
4560.0	2651.3678	211.5393

Company: Esso Australia Pty Ltd.

Well: B-5

Output DLIS Files

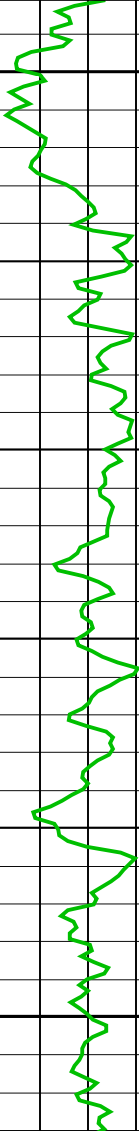
DEFAULT      PERFO\_032LUP      FN:31    PRODUCER    14-Oct-2006 12:09    3401.3 M    3348.1 M

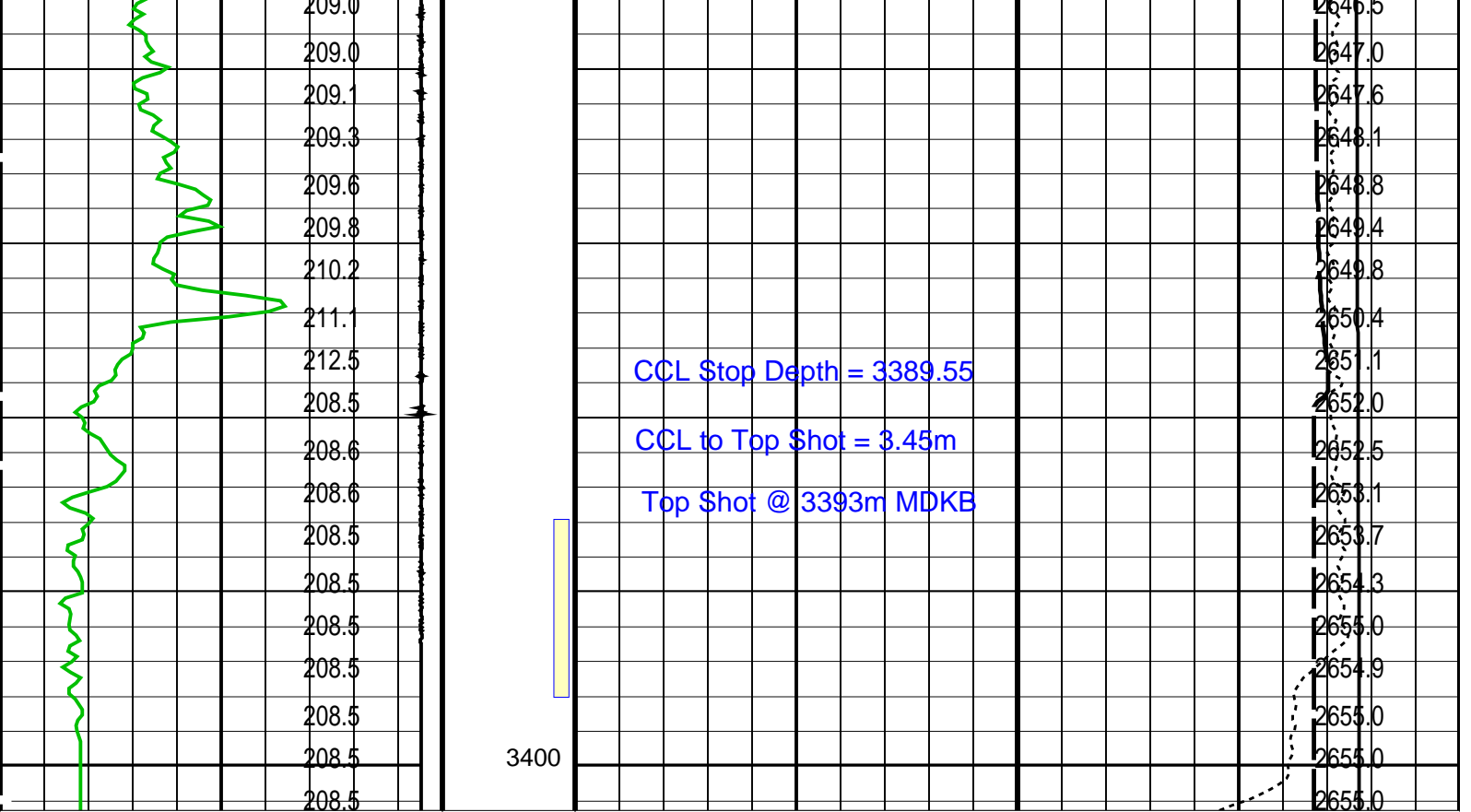
OP System Version: 14C0-302  
MCM

MWP\_GUN      SRC-3220-WPP-AAP5      MWPT-CA      SRC-3220-WPP-AAP5  
MWGT-AA      SRC-3220-WPP-AAP5

PIP SUMMARY

Time Mark Every 60 S

Temperature (TEMP_MWPT) (DEGF)		Pressure (SGP) (PSIA)	
CCL From CCL to T1		Tension (TENS) (LBF)	
Gamma Ray (GR) (GAPI)		Temperature (TEMP_MWPT) (DEGF)	
Casing Collar Locator (CCL)		Strain Gauge Pressure (SGP) (PSIA)	
0	150	0	250
-19	1	0	3000
	207.7	3350	2633.8
	207.8		2634.4
	207.9		2634.7
	207.9		2635.3
	208.0		2635.9
	208.0		2636.5
	208.1		2636.8
	208.2		2637.6
	208.3		2638.2
	208.3		2638.7
	208.3		2639.0
	208.3		2639.8
	208.3		2640.3
	208.3		2640.8
	208.4		2641.5
	208.4		2642.1
	208.4		2642.4
	208.4		2643.1
	208.5		2643.6
	208.6		2644.0
	208.6	3375	2644.8
	208.8		2645.4
	208.9		2645.7
	209.0		2646.5



Casing Collar Locator (CCL)		Strain Gauge Pressure (SGP)	
-19 (----) 1		0 (PSIA) 3000	
Gamma Ray (GR)		Temperature (TEMP_MWPT)	
0 (GAPI) 150		0 (DEGF) 250	
CCL From CCL to T1		Tension (TENS)	
		0 (LBF) 2500	
	Temperature (TEMP_MWPT) (DEGF)		Pressure (SGP) (PSIA)

PIP SUMMARY

Time Mark Every 60 S

Parameters			
DLIS Name	Description	Value	
MWPT-CA: MEASUREMENT WHILE PERFORATING TOOL			
DEVI_FL_CORR	Deviation Angle for Flow Line Correction	0	DEG
FLD	Flow Line Density	1	G/C3
MWPT_NULL_SOURCE	MWPT NULL Temperature Source	TEMS	
MWPT_NULL_TEMP	MWPT NULL Temperature	0.0	DEGC

Format: MWP Vertical Scale: 1:200 Graphics File Created: 14-Oct-2006 12:09

OP System Version: 14C0-302			
MCM			
MWP_GUN	SRC-3220-WPP-AAP	MWPT-CA	SRC-3220-WPP-AAP
MWGT-AA	SRC-3220-WPP-AAP		

Output DLIS Files			
DEFAULT	PERFO_032LUP	FN:31 PRODUCER	14-Oct-2006 12:09

MAXIS Field Log

Company: Esso Australia Pty Ltd.

Well: B-5

Output DLIS Files

DEFAULT

PERFO\_030LUP

FN:29

PRODUCER

14-Oct-2006 11:54

3402.2 M

3349.1 M

OP System Version: 14C0-302  
MCM

MWP\_GUN  
MWGT-AA

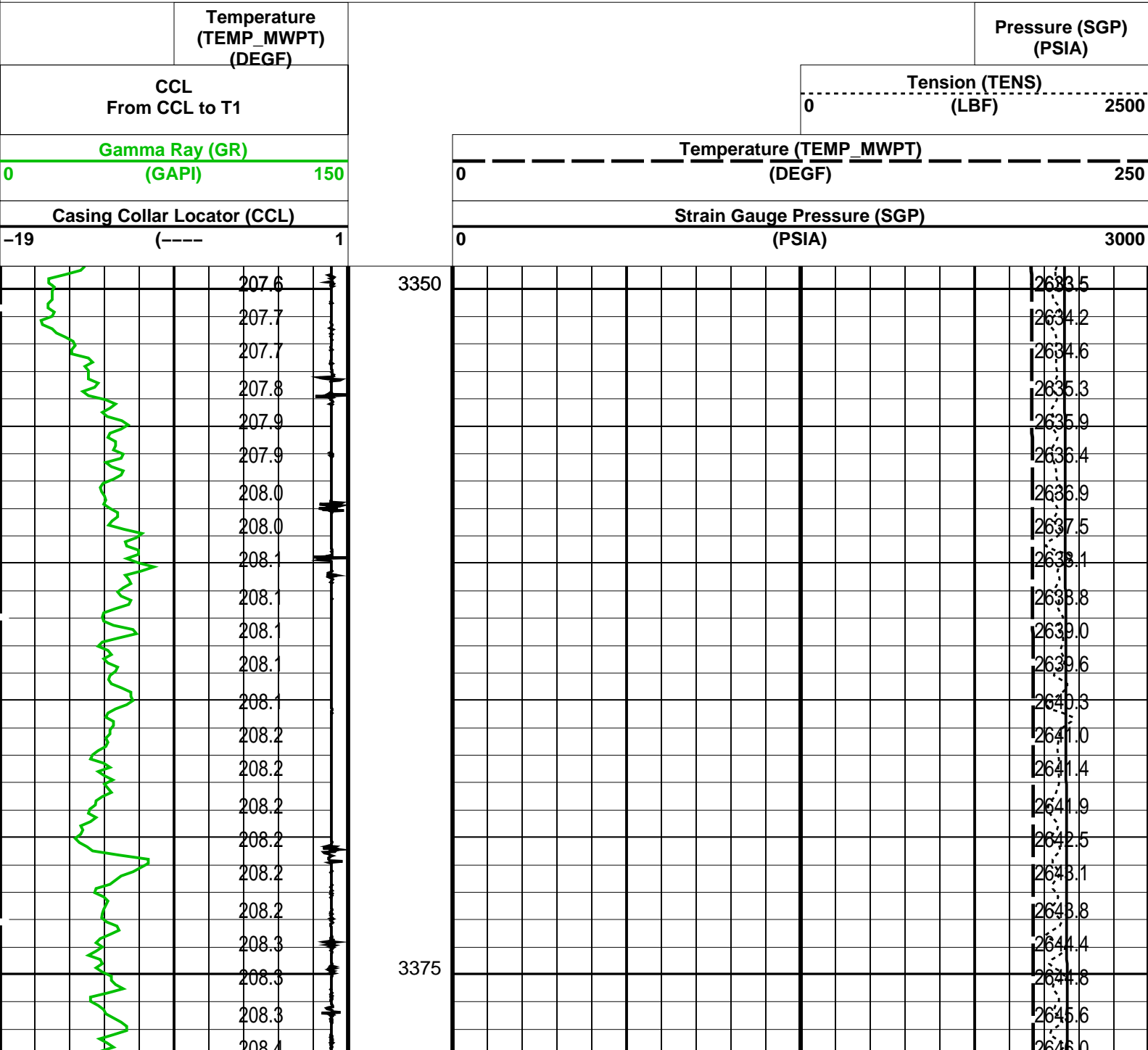
SRC-3220-WPP-AAP\$  
SRC-3220-WPP-AAP\$

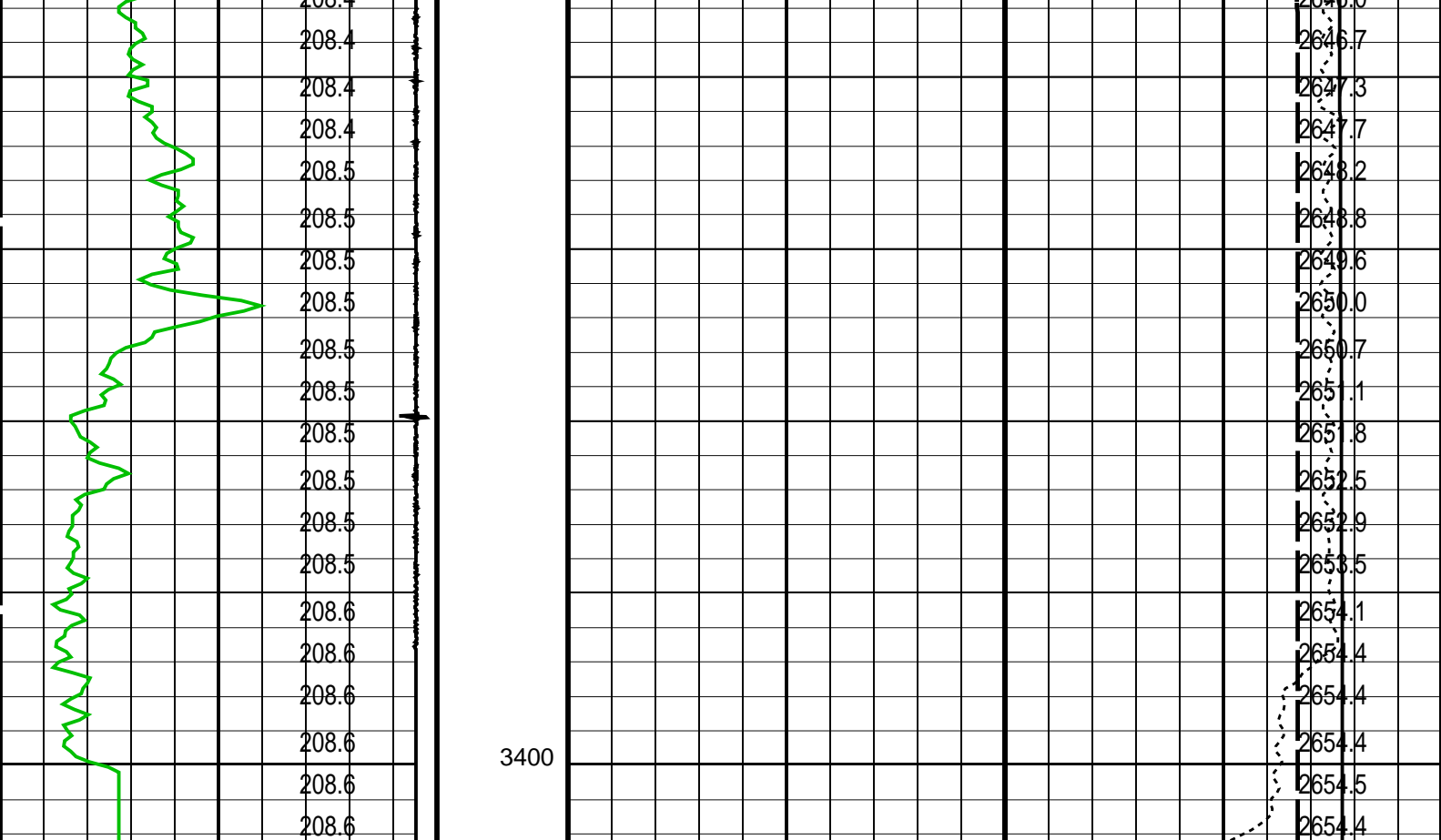
MWPT-CA

SRC-3220-WPP-AAP\$

PIP SUMMARY

Time Mark Every 60 S





Casing Collar Locator (CCL)		Strain Gauge Pressure (SGP)	
-19 (----) 1		0 (PSIA) 3000	
Gamma Ray (GR)		Temperature (TEMP_MWPT)	
0 (GAPI) 150		0 (DEGF) 250	
CCL From CCL to T1		Tension (TENS)	
		0 (LBF) 2500	
Temperature (TEMP_MWPT) (DEGF)		Pressure (SGP) (PSIA)	

PIP SUMMARY

Time Mark Every 60 S

Parameters		
DLIS Name	Description	Value
MWPT-CA: MEASUREMENT WHILE PERFORATING TOOL		
DEVI_FL_CORR	Deviation Angle for Flow Line Correction	0 DEG
FLD	Flow Line Density	1 G/C3
MWPT_NULL_SOURCE	MWPT NULL Temperature Source	TEMS
MWPT_NULL_TEMP	MWPT NULL Temperature	0.0 DEGC

Format: MWP Vertical Scale: 1:200 Graphics File Created: 14-Oct-2006 11:54

OP System Version: 14C0-302			
MCM			
MWP_GUN	SRC-3220-WPP-AAP5	MWPT-CA	SRC-3220-WPP-AAP5
MWGT-AA	SRC-3220-WPP-AAP5		

Output DLIS Files			
DEFAULT	PERFO_030LUP	FN:29	PRODUCER 14-Oct-2006 11:54

Company: Esso Australia Pty Ltd.

Well: B-5

Input DLIS Files

DEFAULT PSP\_012LUP FN:11 PRODUCER 13-Oct-2006 13:36 3412.2 M 3319.6 M

Output DLIS Files

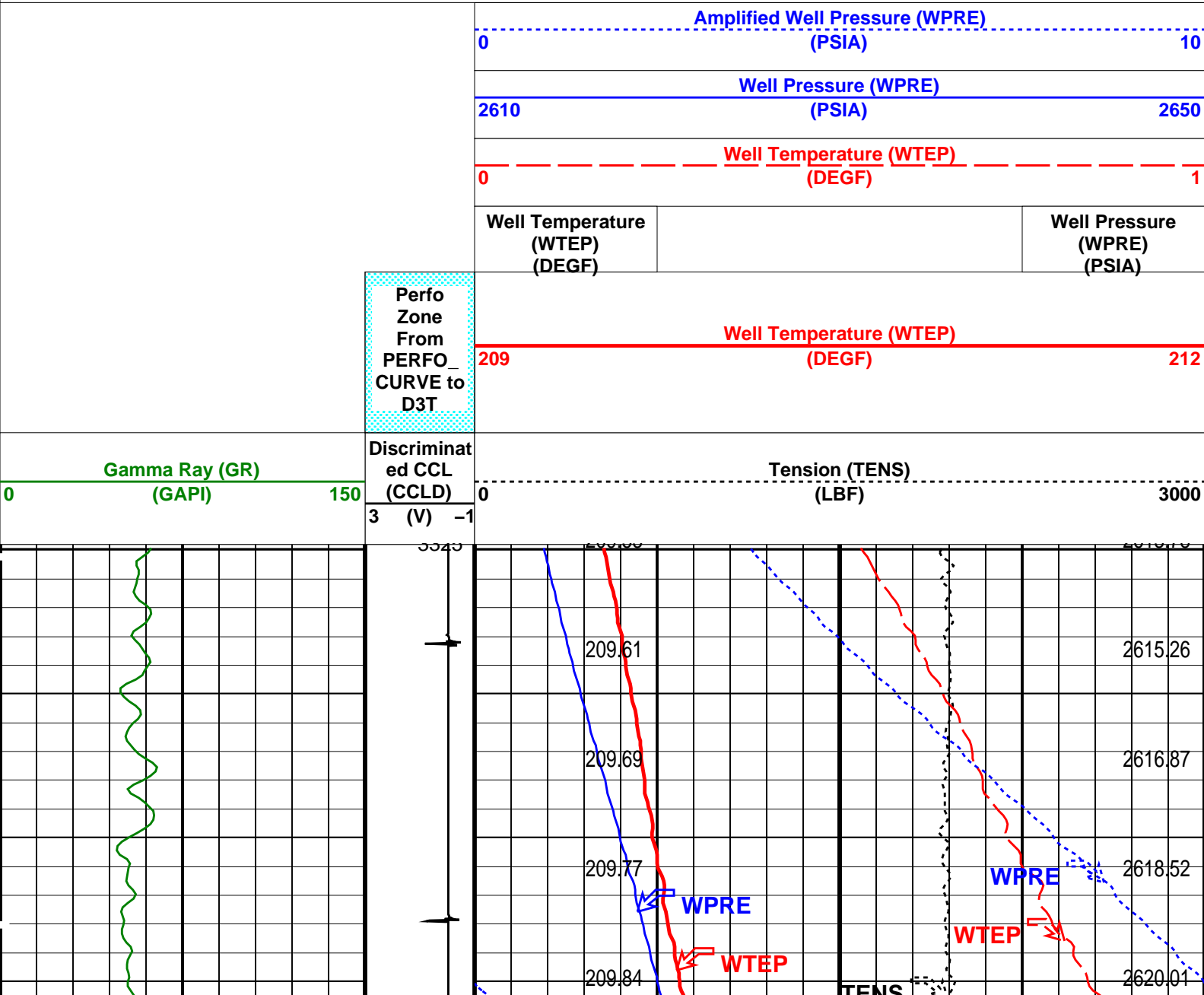
DEFAULT PSP\_015PUP FN:14 PRODUCER 13-Oct-2006 14:16 3417.0 M 3324.8 M

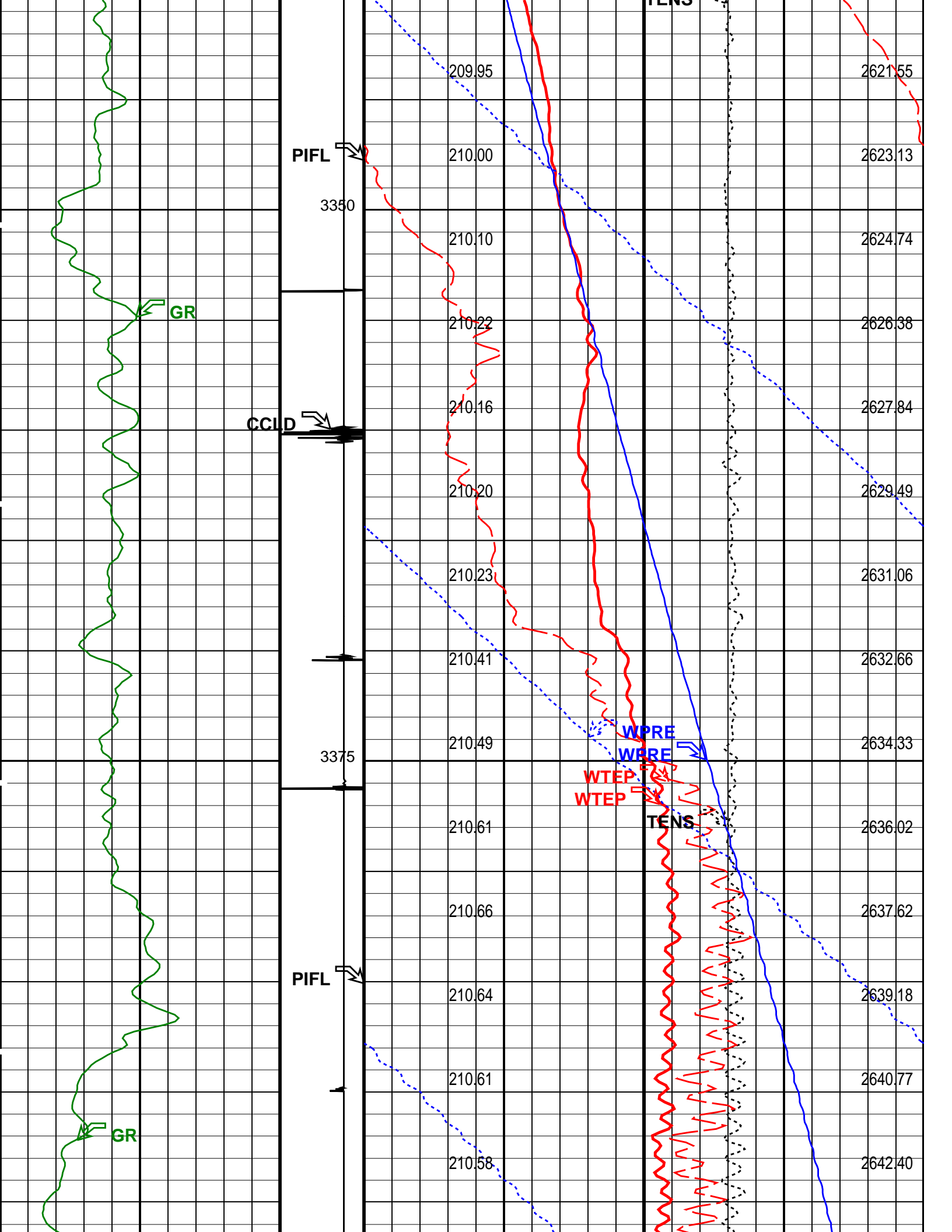
OP System Version: 14C0-302  
MCM

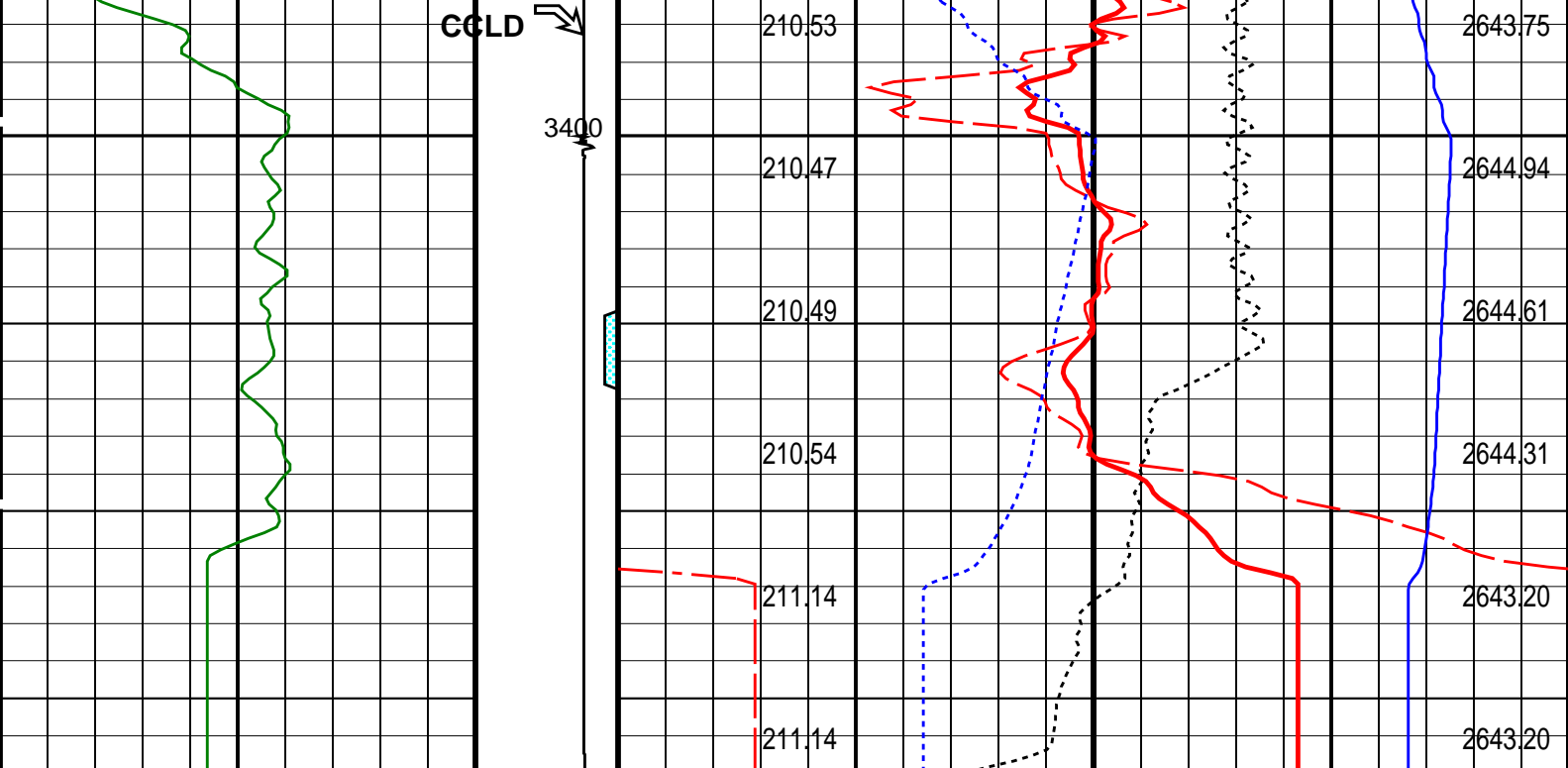
PSPT-B 14C0-302

PIP SUMMARY

Time Mark Every 60 S







Gamma Ray (GR) (GAPI)		Discriminat ed CCL (CCLD)	Tension (TENS) (LBF)	
0		3 (V) -1	0	
150			3000	
		Perfo Zone From PERFO_ CURVE to D3T	Well Temperature (WTEP) (DEGF)	
			209	
			212	
			Well Temperature (WTEP) (DEGF)	Well Pressure (WPRES) (PSIA)
			0	1
			Well Pressure (WPRES) (PSIA)	
			2610	2650
			Amplified Well Pressure (WPRES) (PSIA)	
			0	10

PIP SUMMARY

Time Mark Every 60 S

Format: PSP\_1 Vertical Scale: 1:200 Graphics File Created: 13-Oct-2006 14:16

OP System Version: 14C0-302  
MCM

PSPT-B 14C0-302

Parameters		
DLIS Name	Description	Value
DO PP	System and Miscellaneous Depth Offset for Playback Playback Processing	4.7 M NORMAL

Input DLIS Files					
DEFAULT	PSP_012LUP	FN:11	PRODUCER	13-Oct-2006 13:36	3412.2 M 3319.6 M



# Output DLIS Files

DEFAULT

PSP\_015PUP

FN:14

PRODUCER

13-Oct-2006 14:16

Company: **Esso Australia Pty Ltd.**

**Schlumberger**

Well: **B-5**

Field: **Bream B**

Rig : **Prod4**

Country: **Australia**

2 1/8"Phased Powerjet

MWPT Perforation

7"HPI PSP Plug