

Company: Esso Australia Pty Ltd.

Well: B-1
Field: Bream B
Rig : Prod4

Country: Australia

Prod4
Bream B
Gippsland
B-1
Esso Australia Pty Ltd.

2 1/8"Phased Powerjet MWPT Perforation 7"HPI PSP Plug		LOCATION		
		Gippsland	Elev.: K.B. 47m	
		Basin	G.L. -61	
		Bass Strait	D.F. 47m	
		Permanent Datum: _____	M.S.L. _____	
Log Measured From: _____	D.F. _____	Elev.: 0 m	47.1 m	above Perm. Datum
Drilling Measured From: _____	D.F. _____			
State: Victoria	Max. Well Deviation 32 deg	Longitude 147 50'16.81"E	Latitude 038 31'10.90"S	
Logging Date	16-Oct-2006			
Run Number	1 thru 3			
Depth Driller	2180 m			
Schlumberger Depth	2179 m			
Bottom Log Interval	2179 m			
Top Log Interval	2125 m			
Casing Fluid Type	Production Fluids			
Salinity				
Density				
Fluid Level				
BIT/CASING/TUBING STRING				
Bit Size	8.500 in			
From				
To				
Casing/Tubing Size	7.000 in			
Weight	26 lbm/ft			
Grade	L-80			
From	21.0007 m			
To	2336 m			
Maximum Recorded Temperatures	215 degF			
Logger On Bottom	16-Oct-2006		10:00	
Unit Number	889	Prod4 / Ausl		
Recorded By	S Gilbert			
Witnessed By	G Rimmer			

PVT DATA				Run 1
Oil Density				
Water Salinity				
Gas Gravity				
Bo				
Bw				
1/Bg				
Bubble Point Pressure				
Bubble Point Temperature				
Solution GOR				
Maximum Deviation				32 deg
CEMENTING DATA				
Primary/Squeeze				Primary
Casing String No				
Lead Cement Type				
Volume				
Density				
Water Loss				
Additives				
Tail Cement Type				
Volume				
Density				
Water Loss				
Additives				
Expected Cement Top				
Logging Date				
Run Number				
Depth Driller				
Schlumberger Depth				
Bottom Log Interval				
Top Log Interval				
Casing Fluid Type				
Salinity				
Density				
Fluid Level				
BIT/CASING/TUBING STRING				
Bit Size				
From				
To				
Casing/Tubing Size				
Weight				
Grade				
From				
To				
Maximum Recorded Temperatures				
Logger On Bottom				
Unit Number				
Recorded By				
Witnessed By				

DEPTH SUMMARY LISTING

Depth System Equipment

Date Created: 05-Oct-2006 12:10:45

Depth Measuring Device	Tension Device	Logging Cable
Type: IDW-EB Serial Number: 6373 Calibration Date: 28-SEP-2006 Calibrator Serial Number: 1009 Calibration Cable Type: 2-32ZT Wheel Correction 1: -2 Wheel Correction 2: -2	Type: CMTD-B/A Serial Number: 949 Calibration Date: 28-SEP-2006 Calibrator Serial Number: 1174 Calibration Gain: 1.01 Calibration Offset: 195.00	Type: 2-32ZT Serial Number: 24425 Length: 6600.00 M Conveyance Method: Wireline Rig Type: Offshore_Mobile

Depth Control Parameters

Log Sequence: Subsequent Log In the Well
Reference Log Name: Solar composite.
Reference Log Run Number: 1
Reference Log Date:

Depth Control Remarks

1. Correlated to Solar composite log supplied with program.
2. IDW-EB 6373 used as primary depth control.
3. Z-chart used as back-up.
- 4.
- 5.
- 6.

DISCLAIMER

THE USE OF AND RELIANCE UPON THIS RECORDED-DATA BY THE HEREIN NAMED COMPANY (AND ANY OF ITS AFFILIATES, PARTNERS, REPRESENTATIVES, AGENTS, CONSULTANTS AND EMPLOYEES) IS SUBJECT TO THE TERMS AND CONDITIONS AGREED UPON BETWEEN SCHLUMBERGER AND THE COMPANY, INCLUDING: (a) RESTRICTIONS ON USE OF THE RECORDED-DATA; (b) DISCLAIMERS AND WAIVERS OF WARRANTIES AND REPRESENTATIONS REGARDING COMPANY'S USE OF AND RELIANCE UPON THE RECORDED-DATA; AND (c) CUSTOMER'S FULL AND SOLE RESPONSIBILITY FOR ANY INFERENCE DRAWN OR DECISION MADE IN CONNECTION WITH THE USE OF THIS RECORDED-DATA.

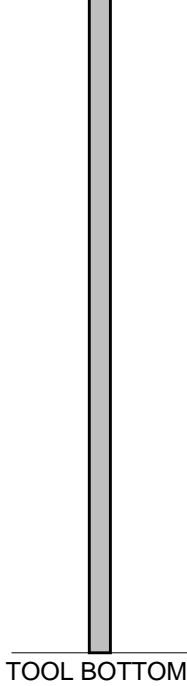
OTHER SERVICES1

OS1: None
OS2:
OS3:
OS4:
OS5:

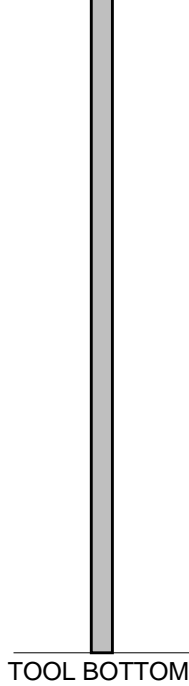
REMARKS: RUN NUMBER 1

Log correlated to ExxonMobil composite supplied with program.
Maximum well deviation 32 degrees at 845 - 874m MDKB.
Perforated interval was 2168.1m to 2170.2m MDKB, 2 1/8" 6spf,
45 degree phased Powerjet with MWPT used for this perforation.
SBHP = 2650psia, SBHT = 209 degf
Gun# 1 : Top shot @ 2168.1m MDKB
CCL to Top Shot = 3.5m
CCL Stop Depth = 2164.6m MDKB

CCL Stop Depth = 2164.6m MDKB					
HPI Plug : Top of Seal = 2173m MDKB					
CCL to Top of Seal =10m					
CCL Stop Depth = 2163m MDKB					
Crew : Alex Sword , Eddy Mezenburg					
RUN 1					
SERVICE ORDER #:		Ausl06328195			
PROGRAM VERSION:		14C0-302			
FLUID LEVEL:					
LOGGED INTERVAL	START	STOP	LOGGED INTERVAL	START	STOP
EQUIPMENT DESCRIPTION					
RUN 1			RUN 2		
SURFACE EQUIPMENT			SURFACE EQUIPMENT		
MWPM-AA 3008			WITM (SHM) 3576		
DOWNHOLE EQUIPMENT			DOWNHOLE EQUIPMENT		
<div> <div>AH-SWBS-B 731</div> <div></div> <div>11.60</div> </div>			<div> <div>AH-SWBS-B 731</div> <div></div> <div>15.19</div> </div>		
<div> <div>AH-SWBS-B</div> <div></div> <div>10.91</div> </div>			<div> <div>AH-SWBS-B</div> <div></div> <div>14.50</div> </div>		
<div> <div>MH-SWHS-A 726</div> <div></div> <div>10.22</div> </div>			<div> <div>MH-SWHS-A 726</div> <div></div> <div>13.82</div> </div>		
<div> <div>MWGT-AA</div> <div>MWPG-AA 19</div> <div>MWGH-AA 19</div> <div>MWPG GR</div> <div></div> <div>2.41</div> </div>			<div> <div>CCL-L 4195</div> <div>Tension CCL</div> <div></div> <div>TOOL ZERO</div> </div>		
<div> <div>MWPT-CA</div> <div>MWPH-AA 94</div> <div>MWPS-AA 94</div> <div></div> <div>8.92</div> </div>			<div> <div>GUN-HPI Setting Tool & PSP Plug</div> <div></div> <div>13.03</div> </div>		
<div> <div>CCL</div> <div>SMWP Pres</div> <div>SMWP Temp</div> <div>Tension</div> <div></div> <div>TOOL ZERO</div> </div>					
<div> <div>MWP_GUN</div> <div>GUN-5mtr 2 1/8" Phased Powerjet Gun</div> <div></div> <div>6.10</div> </div>					

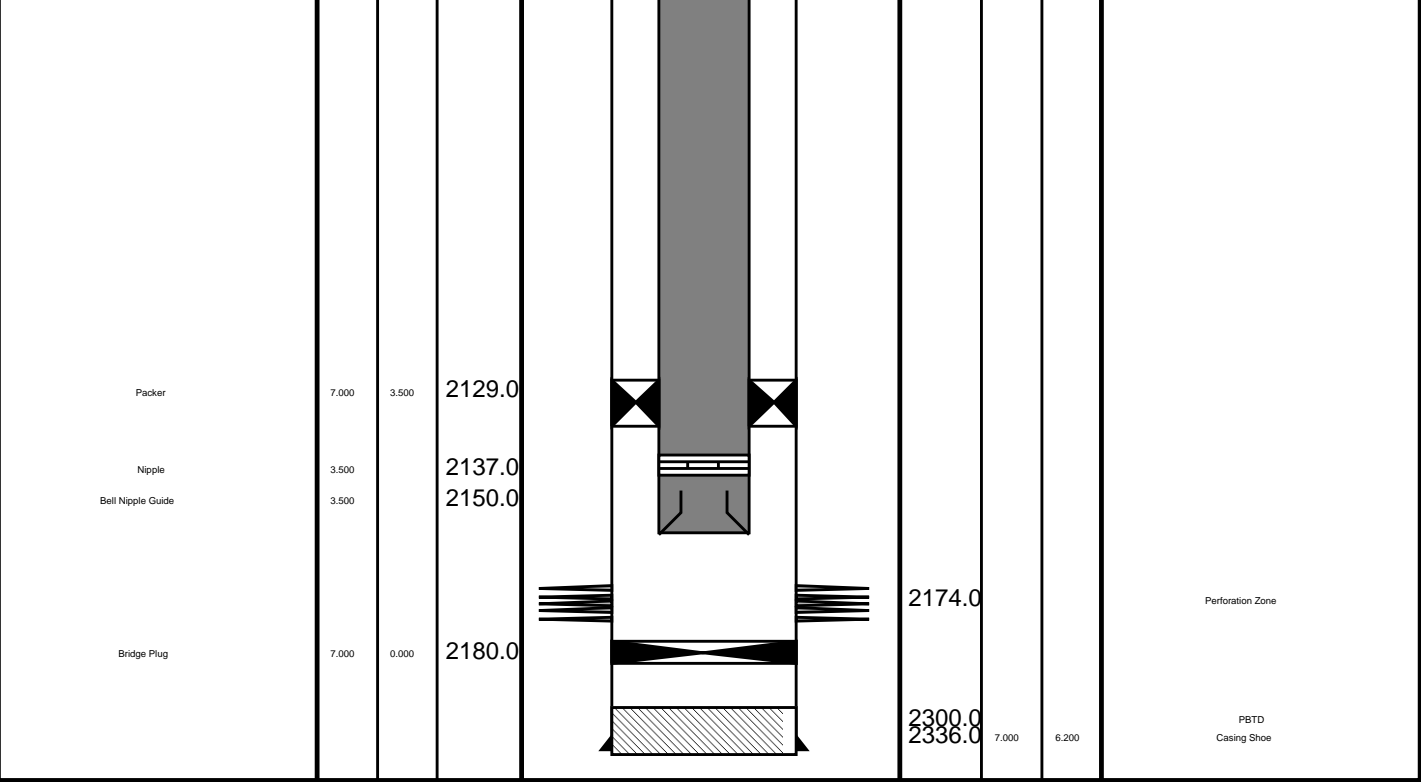


MAXIMUM STRING DIAMETER 2.13 IN
MEASUREMENTS RELATIVE TO TOOL ZERO
ALL LENGTHS IN METERS



MAXIMUM STRING DIAMETER 2.13 IN
MEASUREMENTS RELATIVE TO TOOL ZERO
ALL LENGTHS IN METERS

Production String	(in)		(ft)	Well Schematic	(ft)	(in)		Casing String
	OD	ID	MD		MD	OD	ID	
Tubing Hanger Tubing	7.000 3.500	3.500	20.9 20.3		19.4 19.4	10.000 10.750	6.200 7.000	Casing String Liner Hanger
Shut-in Valve	3.500		453.0					
Gas Lift Mandrel	3.500		550.0					
					633.0	10.750		Casing Shoe
Gas Lift Mandrel	3.500		836.0					
Gas Lift Mandrel	3.500		1084.0					
Nipple	3.500		1101.0					



Job Events Summary

MAXIS Field Log

Schlumberger Job Event Summary

Time	Elapsed Time	Depth (M)	File
Log Pass (up)	16-Oct-2006 9:17	000:06	2175.8 - 2096.7 PERFO_013LUP
Log Pass (up)	16-Oct-2006 11:34	000:05	2174.4 - 2149.6 PERFO_021LUP
Log Pass (up)	16-Oct-2006 11:42	000:17	2174.4 - 2123.1 PERFO_022LUP
Station Log	16-Oct-2006 11:44	000:08	2164.6 - 1.3 PERFO_023LTP
Log Pass (up)	16-Oct-2006 14:36	000:14	2167.4 - 2119.9 PERFO_038LUP

Output DLIS Files

DEFAULT PERFO_038LUP FN:37 PRODUCER 16-Oct-2006 14:36 2167.4 M 2119.9 M

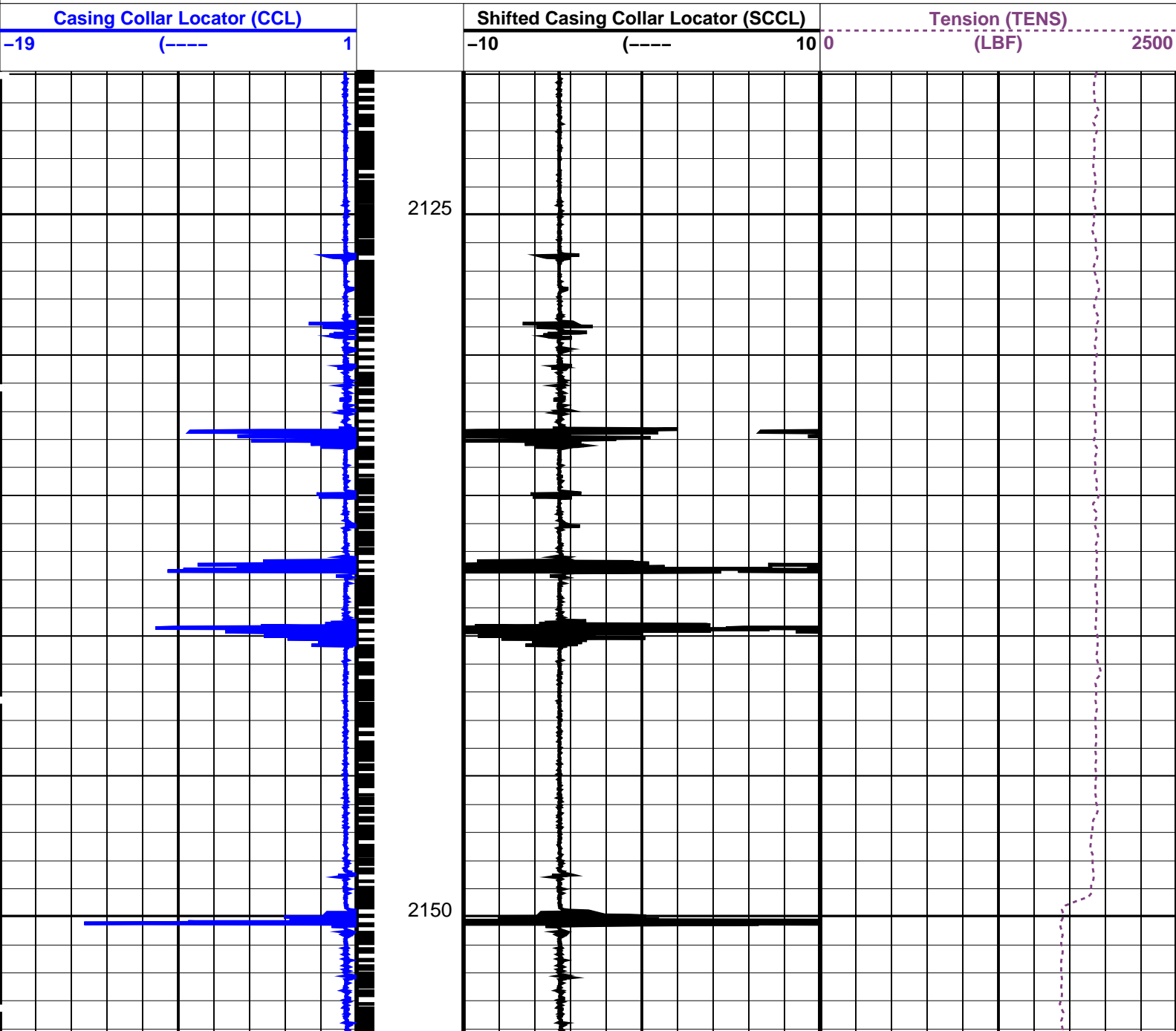
OP System Version: 14C0-302
MCM

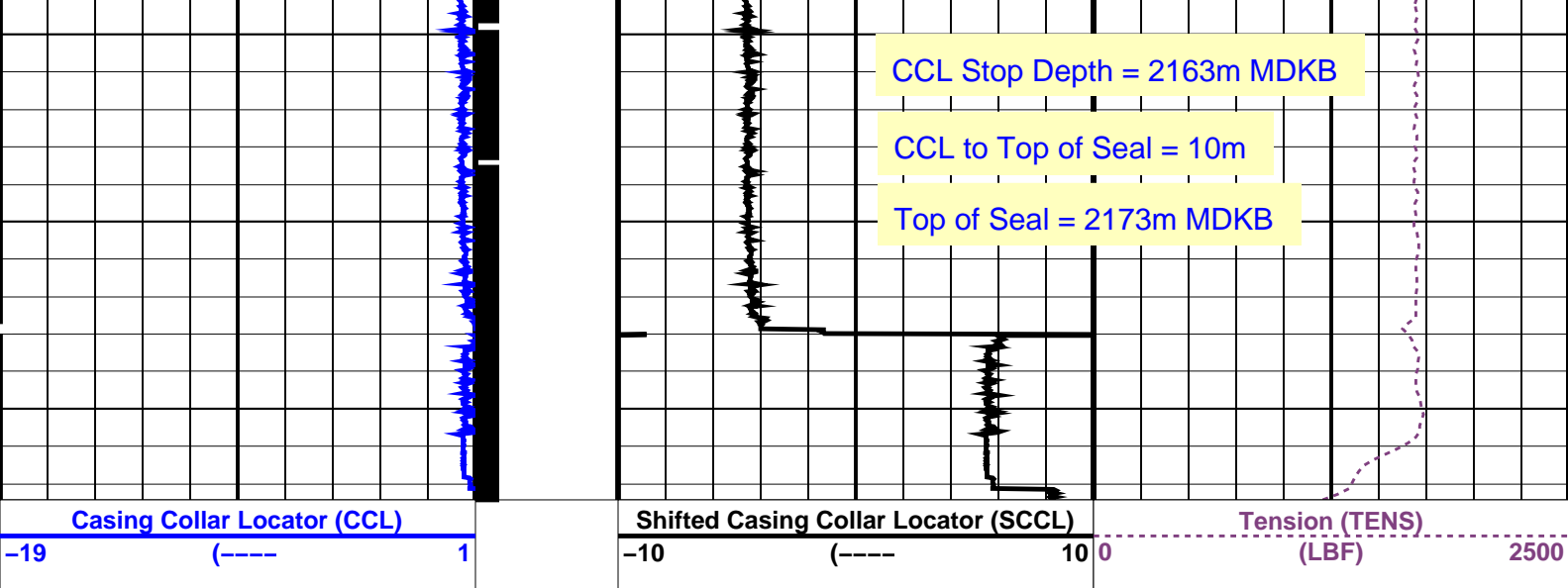
SHM_GUN SRC-3220-WPP-AAP5 CCL-L 14C0-302

PIP SUMMARY

└─ Casing Collars

☒ Time Mark Every 60 S





PIP SUMMARY

← Casing Collars

Parameters

DLIS Name	Description	Value
CCL-L: Casing Collar Locator		
CCLD	CCL reset delay	12 IN
CCLT	CCL Detection Level	0.3 V

Format: PERFO Vertical Scale: 1:200 Graphics File Created: 16-Oct-2006 14:36

OP System Version: 14C0-302

MCM

SHM_GUN SRC-3220-WPP-AAP5 CCL-L 14C0-302

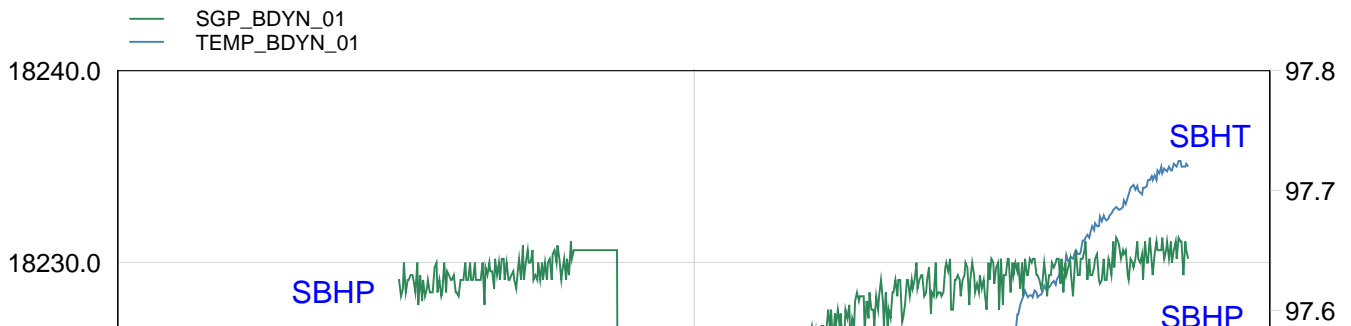
Output DLIS Files

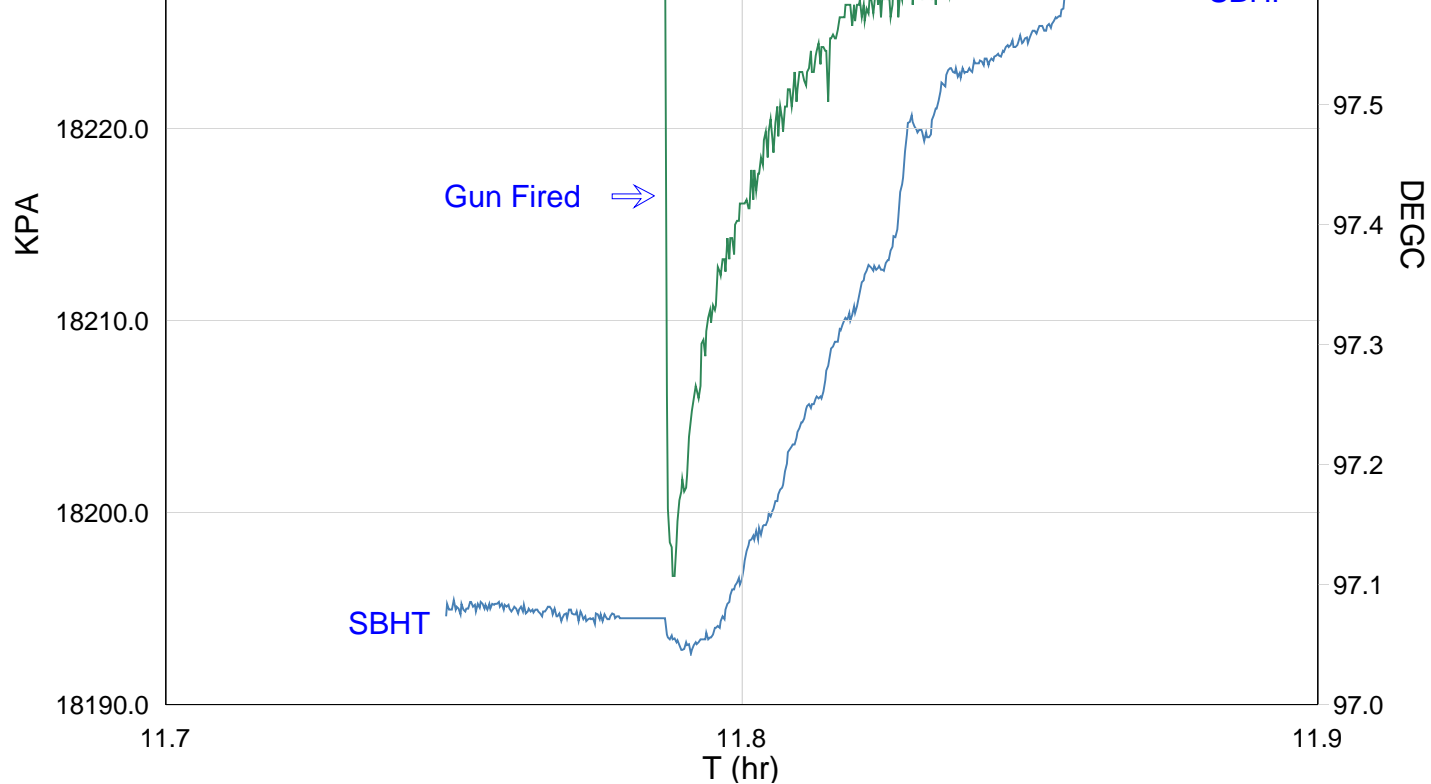
DEFAULT PERFO_038LUP FN:37 PRODUCER 16-Oct-2006 14:36

Schlumberger

Gun # 1 Fired
@ 2168.1m to 2170.1m MDKB

MAXIS Field Log





TIME	SGPA_SL	TEMP_MWPT_SL
------	---------	--------------

2340.0	2643.9723	97.0803
2360.0	2643.7637	97.0852
2380.0	2643.9142	97.0834
2400.0	2644.0083	97.0766
2420.0	2644.0142	97.0758
2440.0	2644.0723	97.0753
2460.0	2644.1360	97.0721
2480.0	2644.1360	97.0721
2500.0	2640.5099	97.0491
2520.0	2641.5165	97.0790
2540.0	2642.2708	97.1390
2560.0	2642.8636	97.2119
2580.0	2643.2015	97.2562
2600.0	2643.5095	97.3305
2620.0	2643.6754	97.3682
2640.0	2643.8102	97.4775
2660.0	2643.6330	97.5302
2680.0	2643.8136	97.5361
2700.0	2643.9985	97.5474
2720.0	2643.9985	97.5621
2740.0	2644.0663	97.6130
2760.0	2644.0307	97.6329
2780.0	2643.9963	97.6672
2800.0	2644.1003	97.6894
2820.0	2644.1003	97.7168
2840.0	2644.1182	97.7197

MAXIS Field Log

Company: Esso Australia Pty Ltd.

Well: B-1

Output DLIS Files

DEFAULT

PERFO_022LUP

FN:21

PRODUCER

16-Oct-2006 11:42

2174.4 M

2123.1 M

OP System Version: 14C0-302

MCM

MWP_GUN

SRC-3220-WPP-AAP

MWGT-AA

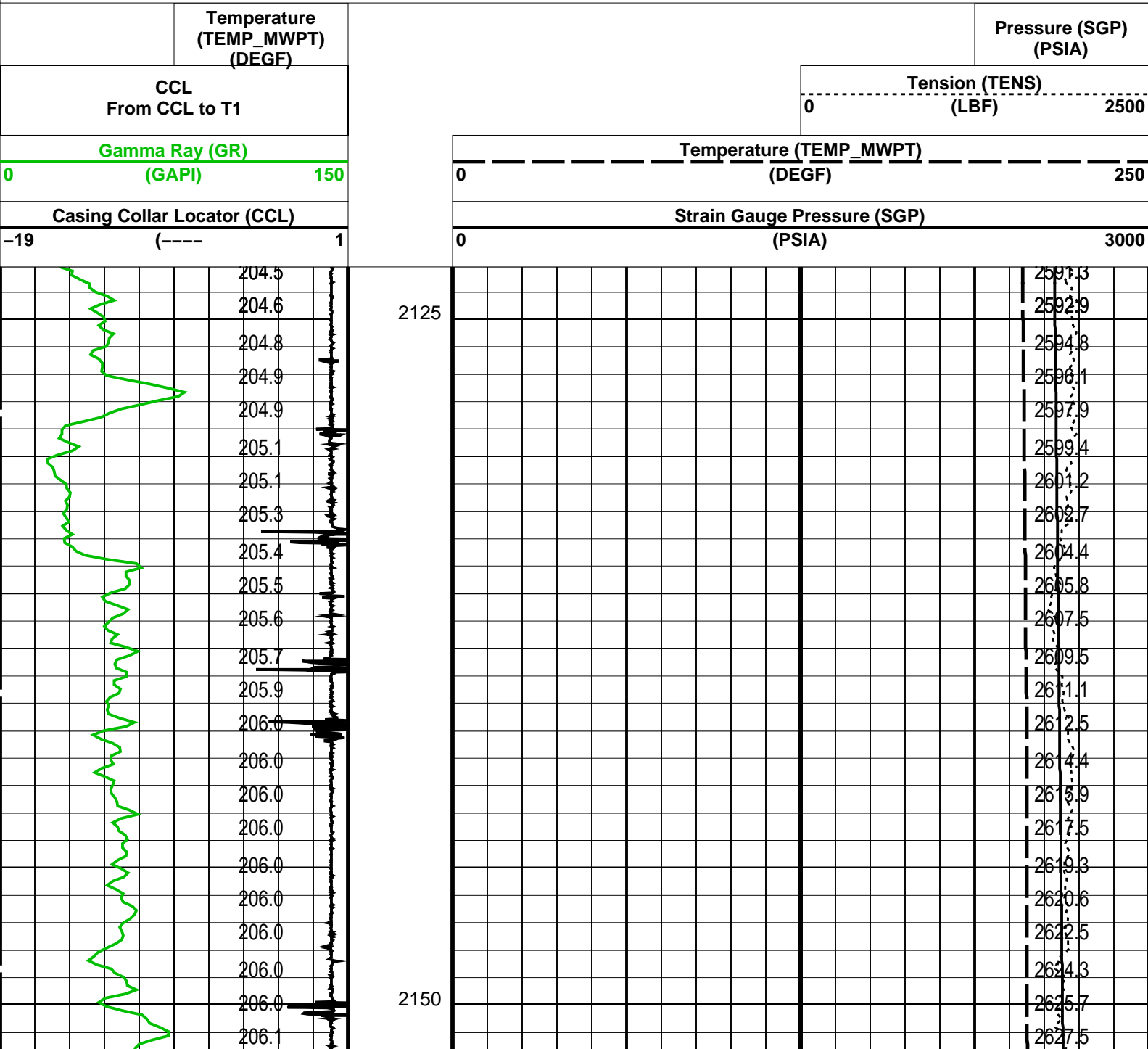
SRC-3220-WPP-AAP

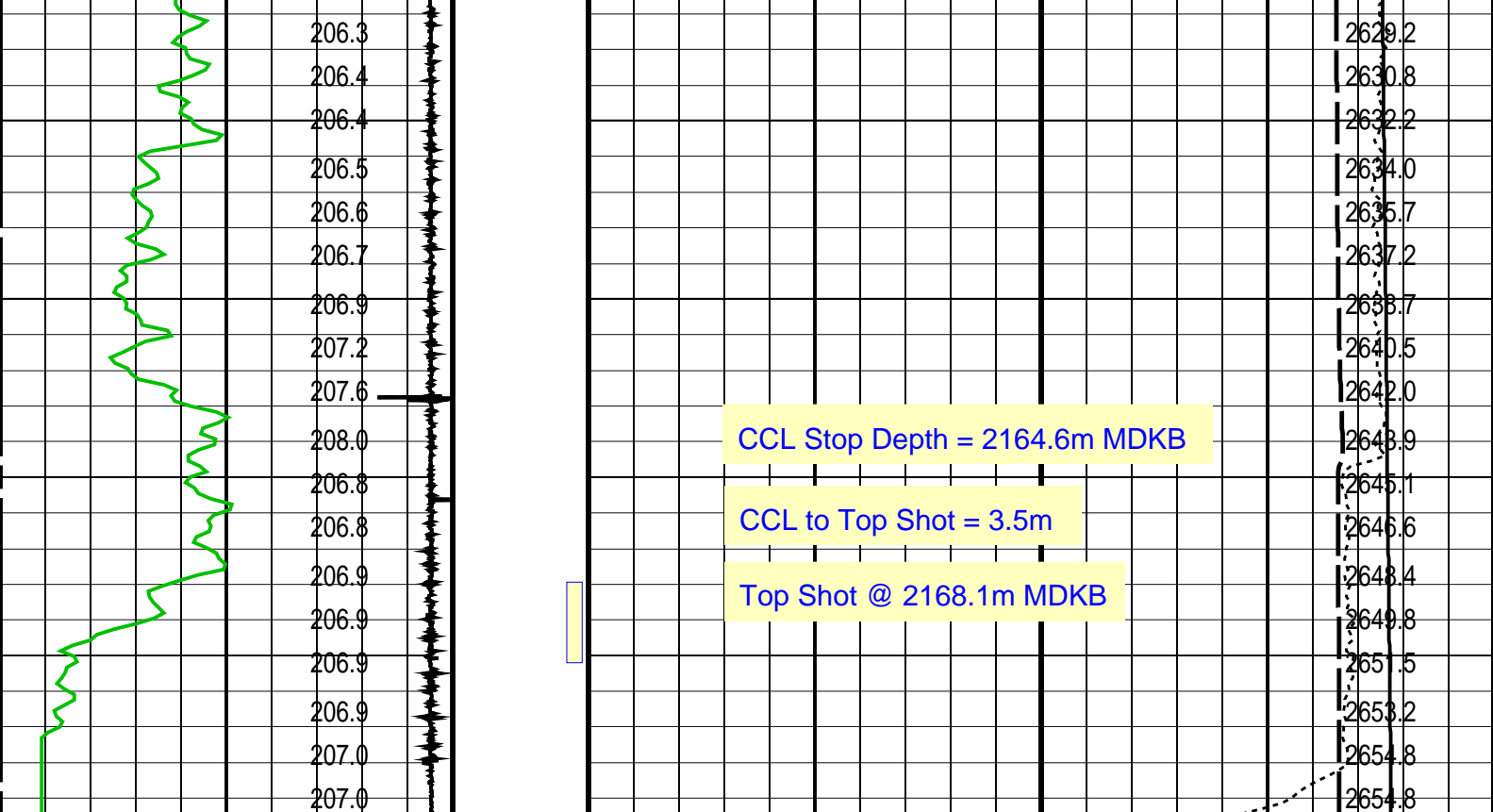
MWPT-CA

SRC-3220-WPP-AAP

PIP SUMMARY

☒ Time Mark Every 60 S





Casing Collar Locator (CCL)		Strain Gauge Pressure (SGP)	
-19 (----) 1		0 (PSIA) 3000	
Gamma Ray (GR)		Temperature (TEMP_MWPT)	
0 (GAPI) 150		0 (DEGF) 250	
CCL From CCL to T1		Tension (TENS)	
Temperature (TEMP_MWPT) (DEGF)		0 (LBF) 2500	
		Pressure (SGP) (PSIA)	

PIP SUMMARY

Time Mark Every 60 S

Parameters		
DLIS Name	Description	Value
MWPT-CA: MEASUREMENT WHILE PERFORATING TOOL		
DEVI_FL_CORR	Deviation Angle for Flow Line Correction	0 DEG
FLD	Flow Line Density	1 G/C3
MWPT_NULL_SOURCE	MWPT NULL Temperature Source	TEMS
MWPT_NULL_TEMP	MWPT NULL Temperature	0.0 DEGC

Format: MWP Vertical Scale: 1:200 Graphics File Created: 16-Oct-2006 11:42

OP System Version: 14C0-302			
MCM			
MWP_GUN	SRC-3220-WPP-AAP5	MWPT-CA	SRC-3220-WPP-AAP5
MWGT-AA	SRC-3220-WPP-AAP5		

Output DLIS Files			
DEFAULT	PERFO_022LUP	FN:21	PRODUCER 16-Oct-2006 11:42



Correlation Pass

MAXIS Field Log

Company: Esso Australia Pty Ltd.

Well: B-1

Output DLIS Files

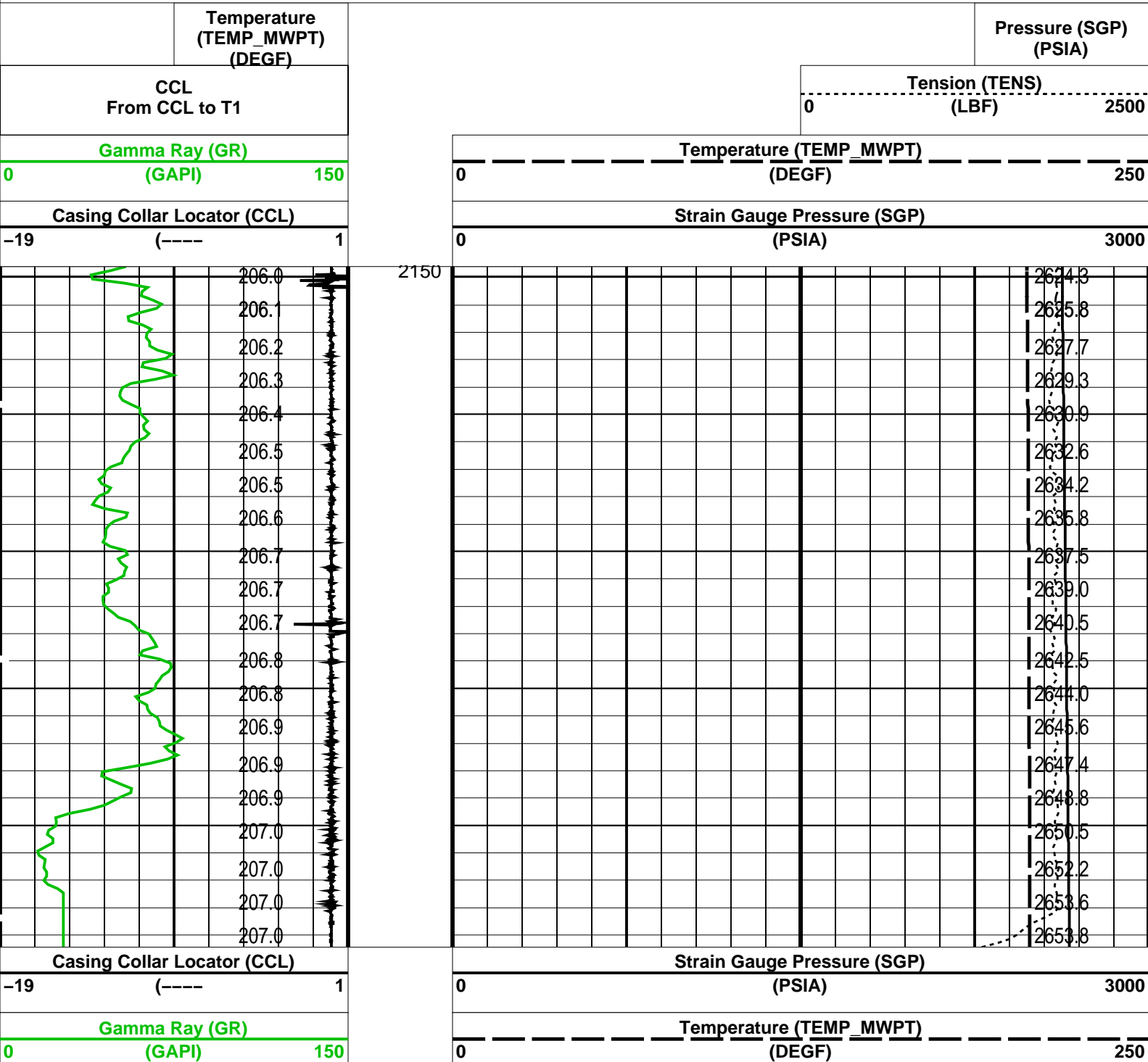
DEFAULT PERFO_021LUP FN:20 PRODUCER 16-Oct-2006 11:34 2174.4 M 2149.6 M

OP System Version: 14C0-302
MCM

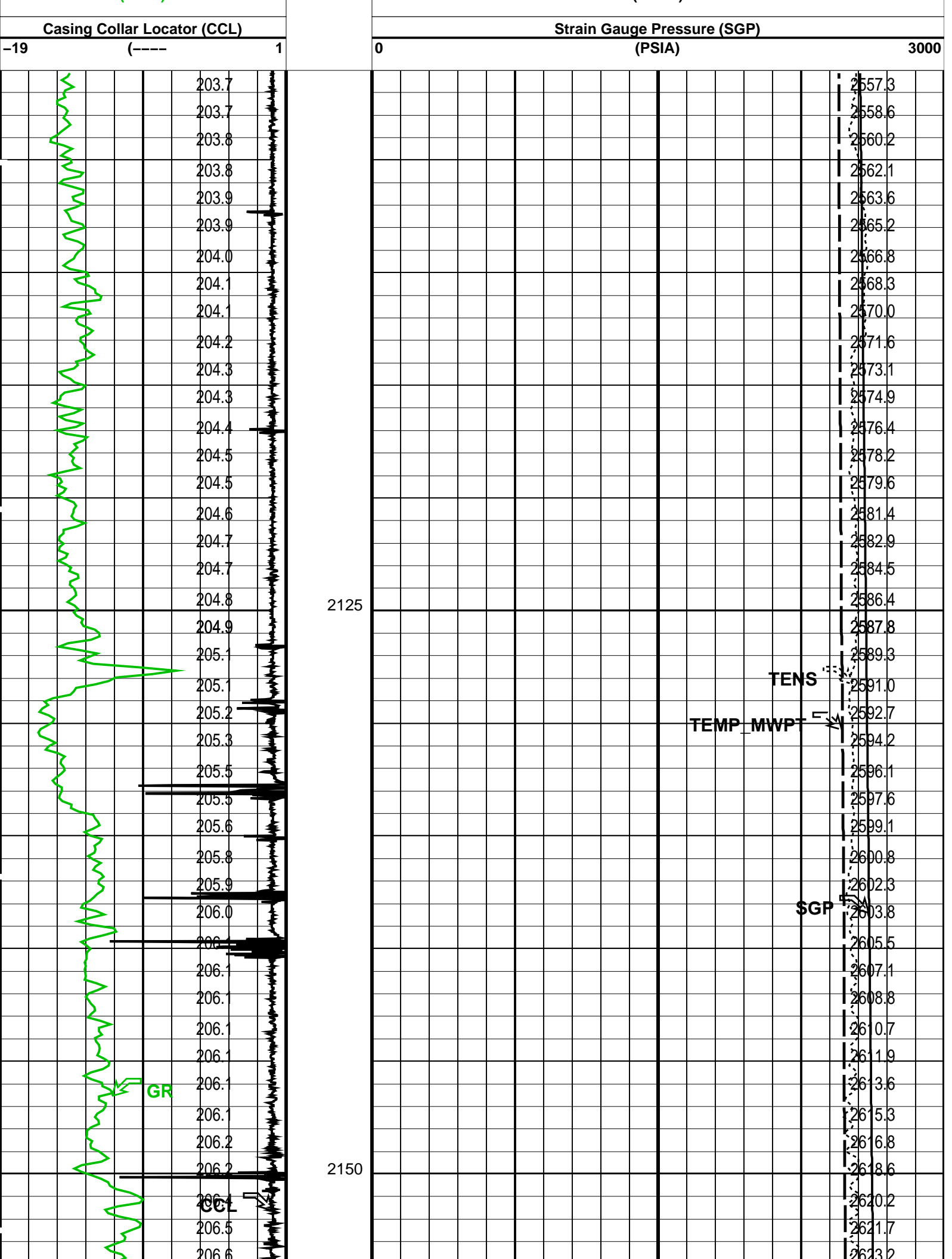
MWP_GUN SRC-3220-WPP-AAP\$ MWPT-CA SRC-3220-WPP-AAP\$
MWGT-AA SRC-3220-WPP-AAP\$

PIP SUMMARY

Time Mark Every 60 S



CCL From CCL to T1				Tension (TENS) 0 (LBF) 2500	
	Temperature (TEMP_MWPT) (DEGF)			Pressure (SGP) (PSIA)	
PIP SUMMARY					
Time Mark Every 60 S					
Parameters					
DLIS Name		Description		Value	
MWPT-CA: MEASUREMENT WHILE PERFORATING TOOL					
DEVI_FL_CORR		Deviation Angle for Flow Line Correction		0	DEG
FLD		Flow Line Density		1	G/C3
MWPT_NULL_SOURCE		MWPT NULL Temperature Source		TEMS	
MWPT_NULL_TEMP		MWPT NULL Temperature		0.0	DEGC
Format: MWP		Vertical Scale: 1:200		Graphics File Created: 16-Oct-2006 11:34	
OP System Version: 14C0-302					
MCM					
MWP_GUN	SRC-3220-WPP-AAP\$	MWPT-CA	SRC-3220-WPP-AAP\$		
MWGT-AA	SRC-3220-WPP-AAP\$				
Output DLIS Files					
DEFAULT	PERFO_021LUP	FN:20	PRODUCER	16-Oct-2006 11:34	
<div><div><div>Schlumberger</div><div>Dummy Plug</div><div>MAXIS Field Log</div></div></div>					
Company: Esso Australia Pty Ltd. Well: B-1					
Input DLIS Files					
DEFAULT	PERFO_013LUP	FN:12	PRODUCER	16-Oct-2006 09:17	2175.8 M 2096.7 M
Output DLIS Files					
DEFAULT	PERFO_014PUP	FN:13	PRODUCER	16-Oct-2006 09:30	2179.5 M 2101.0 M
OP System Version: 14C0-302					
MCM					
MWP_GUN	SRC-3220-WPP-AAP\$	MWPT-CA	SRC-3220-WPP-AAP\$		
MWGT-AA	SRC-3220-WPP-AAP\$				
PIP SUMMARY					
Time Mark Every 60 S					
	Temperature (TEMP_MWPT) (DEGF)			Pressure (SGP) (PSIA)	
CCL From CCL to T1				Tension (TENS) 0 (LBF) 2500	
Gamma Ray (GR)		Temperature (TEMP_MWPT)			
0	(GAPI) 150	0	(DEGF)	250	



Output DLIS Files

DEFAULT

PERFO_014PUP

FN:13

PRODUCER

16-Oct-2006 09:30

Company: **Esso Australia Pty Ltd.**

Schlumberger

Well: **B-1**

Field: **Bream B**

Rig : **Prod4**

Country: **Australia**

2 1/8"Phased Powerjet

MWPT Perforation

7"HPI PSP Plug