

Company: Esso Australia Ltd.

Well: B-13
Field: Bream B
Rig : Prod4

Country: Australia

2 1/8"Phased Powerjet	
Mwpt Perforation	
7"HPI PSP Plug	
LOCATION	
Gippsland	Elev.: K.B.
Basin	G.L. -61 m
Bass Strait	D.F. 47.1 m
Permanent Datum: _____	Elev.: 0 m _____
Log Measured From: _____	47.1 m above Perm. Datum
Drilling Measured From: _____	
State: Victoria	Max. Well Deviation 41 deg
Longitude 147 50'16.81"E	Latitude 038 31'10.90"S
Logging Date 12-Oct-2006	
Run Number	1 thru 3
Depth Driller	2392 m
Schlumberger Depth	2392 m
Bottom Log Interval	2392 m
Top Log Interval	2350 m
Casing Fluid Type	Production Fluids
Salinity	
Density	
Fluid Level	
BIT/CASING/TUBING STRING	
Bit Size	8.500 in
From	
To	
Casing/Tubing Size	7.000 in
Weight	26 lbm/ft
Grade	LT&C
From	20.95 m
To	2557.66 m
Maximum Recorded Temperatures	212 degf
Logger On Bottom	12-Oct-2006
Unit Number	889
Recorded By	G Wright
Witnessed By	G Rimmer

				Run 1
PVT DATA				
Oil Density				
Water Salinity				
Gas Gravity				
Bo				
Bw				
1/Bg				
Bubble Point Pressure				
Bubble Point Temperature				
Solution GOR				
Maximum Deviation				41 deg
CEMENTING DATA				
Primary/Squeeze				Primary
Casing String No				
Lead Cement Type				
Volume				
Density				
Water Loss				
Additives				
Tail Cement Type				
Volume				
Density				
Water Loss				
Additives				
Expected Cement Top				
Logging Date				
Run Number				
Depth Driller				
Schlumberger Depth				
Bottom Log Interval				
Top Log Interval				
Casing Fluid Type				
Salinity				
Density				
Fluid Level				
BIT/CASING/TUBING STRING				
Bit Size				
From				
To				
Casing/Tubing Size				
Weight				
Grade				
From				
To				
Maximum Recorded Temperatures				
Logger On Bottom				
Unit Number				
Recorded By				
Witnessed By				

DEPTH SUMMARY LISTING

[illegible]

Depth Control Parameters	
--------------------------	--

Log Sequence:	Subsequent Log In the Well
Reference Log Name:	Solar composite.
Reference Log Run Number:	1
Reference Log Date:	

Depth Control Remarks	
-----------------------	--

1. Correlated to Solar composite log supplied with program.
2. IDW-EB 6373 used as primary depth control.
3. Z-chart used as back-up.
- 4.
- 5.
- 6.

DISCLAIMER

THE USE OF AND RELIANCE UPON THIS RECORDED-DATA BY THE HEREIN NAMED COMPANY (AND ANY OF ITS AFFILIATES, PARTNERS, REPRESENTATIVES, AGENTS, CONSULTANTS AND EMPLOYEES) IS SUBJECT TO THE TERMS AND CONDITIONS AGREED UPON BETWEEN SCHLUMBERGER AND THE COMPANY, INCLUDING: (a) RESTRICTIONS ON USE OF THE RECORDED-DATA; (b) DISCLAIMERS AND WAIVERS OF WARRANTIES AND REPRESENTATIONS REGARDING COMPANY'S USE OF AND RELIANCE UPON THE RECORDED-DATA; AND (c) CUSTOMER'S FULL AND SOLE RESPONSIBILITY FOR ANY INFERENCE DRAWN OR DECISION MADE IN CONNECTION WITH THE USE OF THIS RECORDED-DATA.

OTHER SERVICES1
OS1: None
OS2:
OS3:
OS4:
OS5:

REMARKS: RUN NUMBER 1

Log correlated to ExxonMobil composite supplied with program.
Maximum well deviation 41 degrees at 2055.1m MDKB

Perforated interval was 2382.5m to 2387.5m MDKB. 2 1/8" 6spf.

45 degree phased Powerjet used for this perforation.

SBHP = 2630 psia, SBHT = 212 degf.

No change of pressure or temperature after firing the gun.
Use RCP 3" in diameter at 2000 m MPR (top of plume)








Hpl PSP 7" plug set at 2389m MDKB, top of plug.

Crew : Jake Annear & John Light.

SERVICE ORDER #: AusI06328192
PROGRAM VERSION: 14C0-302
FLUID LEVEL:

LOGGED INTERVAL	START	

EQUIPMENT DESCRIPTION

RUN 1		
SURFACE EQUIPMENT		
MWPM-AA		
DOWNHOLE EQUIPMENT		
AH-SWBS-B 731		12.51
AH-SWBS-B 761		11.82
MH-SWHS-A 726		11.14
MWPG-AA 19 MWGH-AA 19	MWPG GR 	10.81 2.41
MWPH-AA 94 MWPS-AA 94		9.83
	CCL SMWP Pres SMWP Temp Tension 	TOOL ZERO
5 mtr 2 1/8" Phased Powerjet Gun 5 mtr 2 1/8" Phased Powerjet Gun		7.01

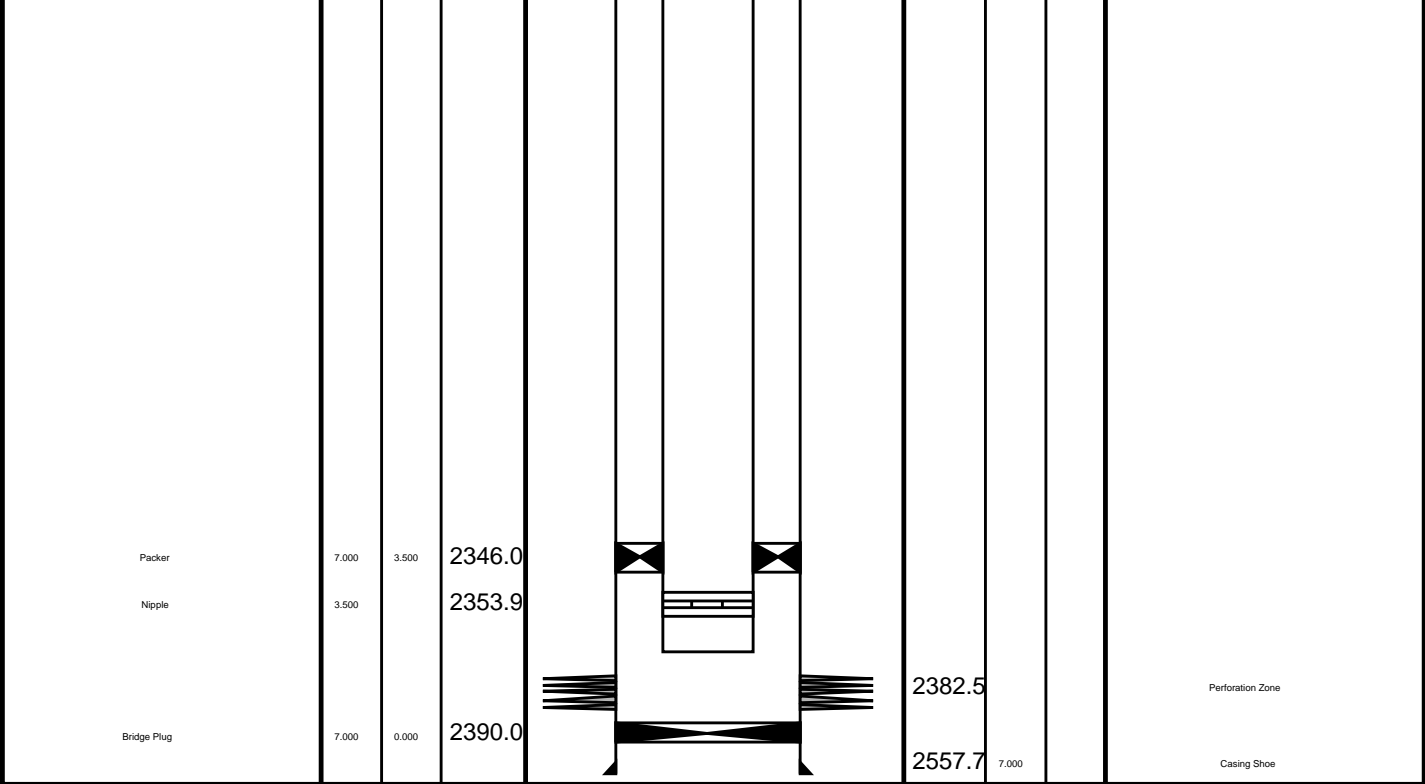


TOOL BOTTOM

0.00

MAXIMUM STRING DIAMETER 2.13 IN
MEASUREMENTS RELATIVE TO TOOL ZERO
ALL LENGTHS IN METERS

Production String	(in)		(m)	Well Schematic	(m)	20.6	(in)	Casing String
	OD	ID	MD		MD	OD	ID	
Tubing Hanger	7.000	3.500	12.0		20.6	7.000	7.000	Casing String Liner Hanger
Shutin Valve	3.500		452.0					
Gas Lift Mandrel	3.500		546.0					
Gas Lift Mandrel	3.500		843.0		728.4	10.750		Casing Shoe
Gas Lift Mandrel	3.500		1120.0					
Nipple	3.500		1136.6					



Schlumberger Job Event Summary

Time	Elapsed Time	Depth (M)	File
Simulated Log	12-Oct-2006 10:26	000:14	PERFO_037LUP
Log Pass (down)	12-Oct-2006 11:14	000:32	4.7 - 2385.4 PERFO_038LDP
Log Pass (up)	12-Oct-2006 11:46	000:03	2384.9 - 2365.6 PERFO_039LUP
Log Pass (up)	12-Oct-2006 11:53	000:02	2382.6 - 2365.7 PERFO_041LUP
Log Pass (up)	12-Oct-2006 11:58	000:13	2382.3 - 2348.2 PERFO_042LUP
Log Pass (up)	12-Oct-2006 12:13	000:48	2257.5 - -0.7 PERFO_043LUP



7"HPI PSP Plug
Plug set @ 2388.5m MDKB

OP System Version: 14C0-302

MCM

SHM_GUN

SRC-3220-WPP-AAPE

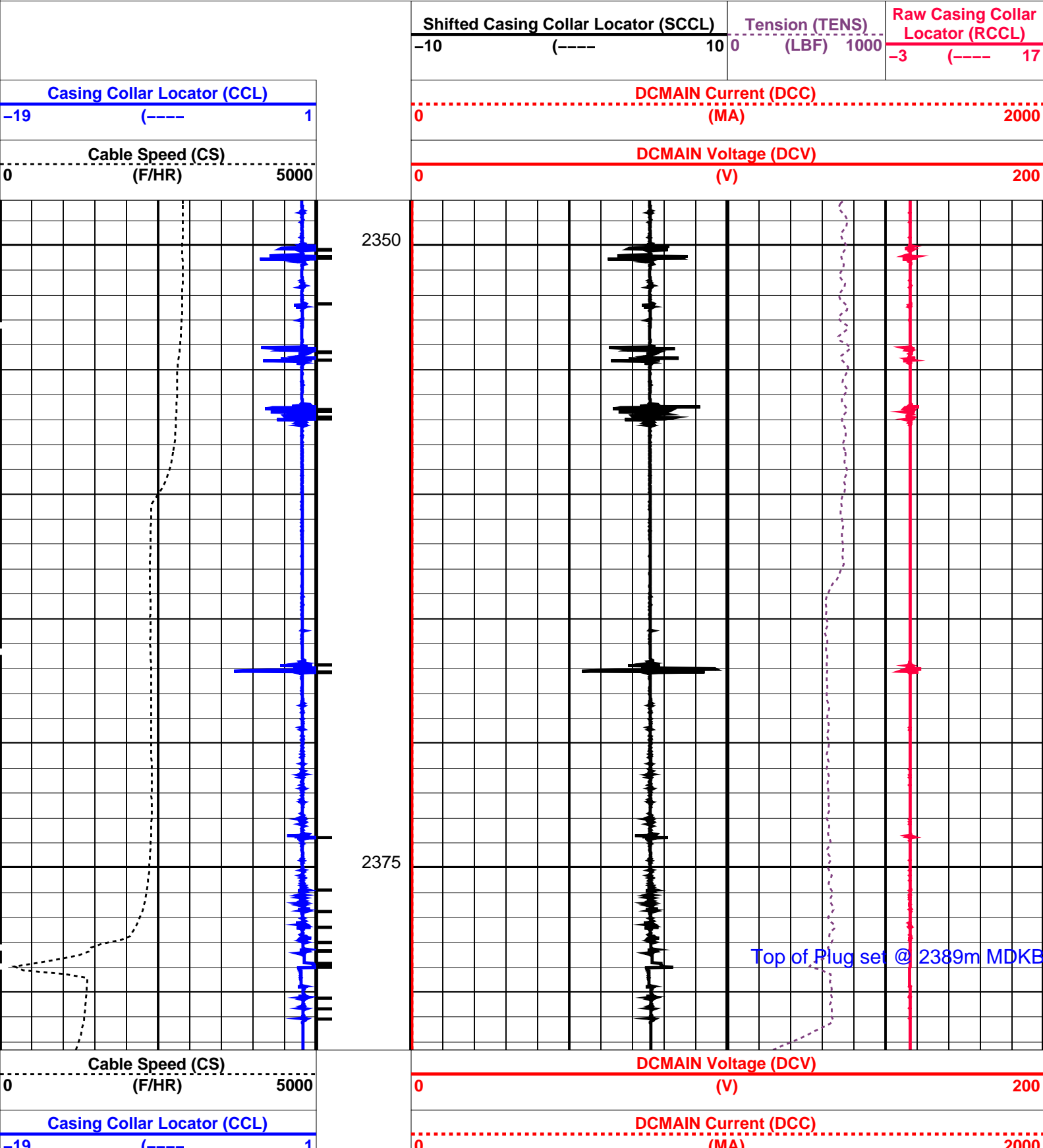
CCL-L

14C0-302

PIP SUMMARY

Casing Collars

Time Mark Every 60 S



	Shifted Casing Collar Locator (SCCL)	Tension (TENS)	Raw Casing Collar Locator (RCCL)
-10	(----	10	0
		(LBF) 1000	-3
			(----- 17

PIP SUMMARY

└ Casing Collars

Time Mark Every 60 S

Parameters

DLIS Name	Description	Value
CCLD	CCL-L: Casing Collar Locator	
CCLT	CCL reset delay	12 IN
	CCL Detection Level	0.3 V

Format: PERFO Vertical Scale: 1:200 Graphics File Created: 12-Oct-2006 11:58

OP System Version: 14C0-302

MCM

SHM_GUN	SRC-3220-WPP-AAP5	CCL-L	14C0-302
---------	-------------------	-------	----------

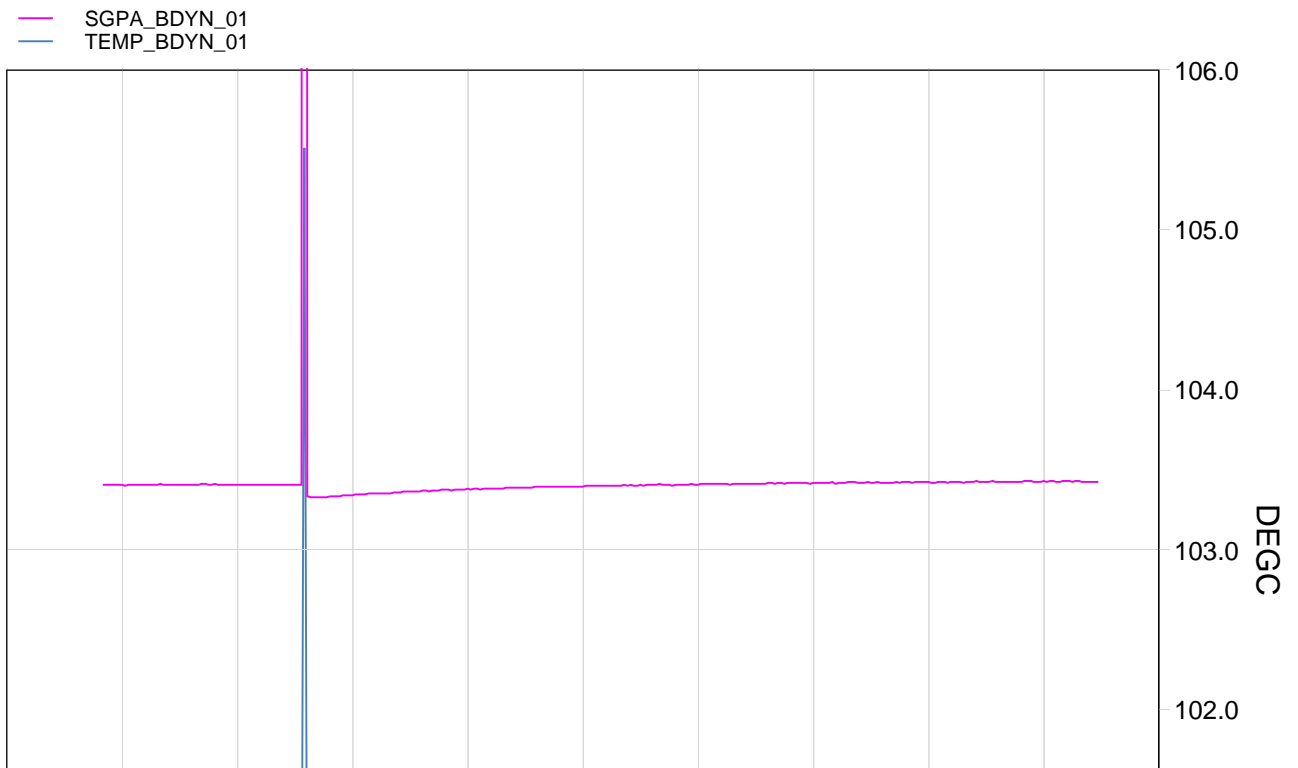
Output DLIS Files

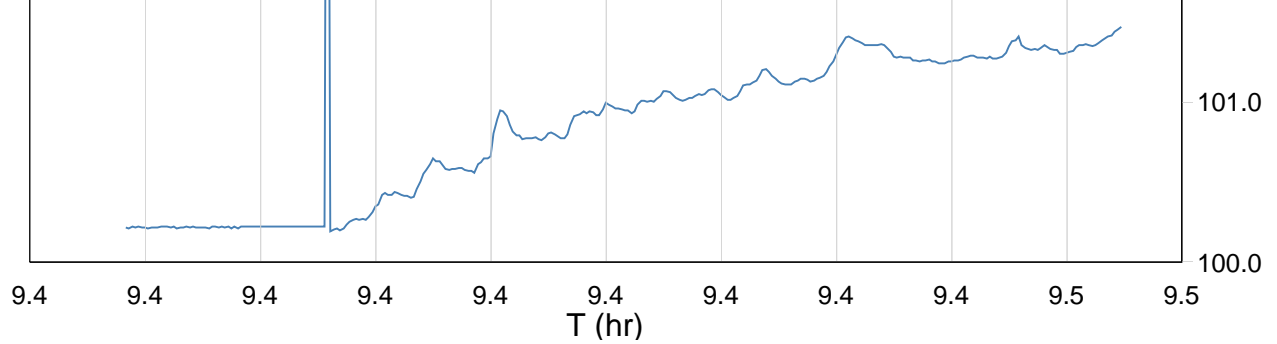
DEFAULT	PERFO_042LUP	FN:40	PRODUCER	12-Oct-2006 11:58
---------	--------------	-------	----------	-------------------



GUN # 1
2382.5m to 2387.5m MDKB

MAXIS Field Log





TIME	PSIA	DEGF
1390.0	2630.3642	212.3818
1400.0	2630.4159	212.3951
1410.0	2630.5314	212.4005
1420.0	2630.6435	212.3947
1430.0	2630.4481	212.3981
1440.0	2630.4481	212.3981
1450.0	2630.4481	212.3981
1460.0	2626.8008	212.4776
1470.0	2627.5025	212.7702
1480.0	2628.0661	212.8370
1490.0	2628.6861	213.0431
1500.0	2628.8893	213.1297
1510.0	2629.2922	213.4680
1520.0	2629.6030	213.4114
1530.0	2629.7377	213.6583
1540.0	2630.0365	213.7647
1550.0	2630.1951	213.8205
1560.0	2630.3582	213.8780
1570.0	2630.4337	213.8982
1580.0	2630.5775	213.8717
1590.0	2630.8373	214.1364
1600.0	2630.8834	214.0633
1610.0	2630.8449	214.2666
1620.0	2631.0086	214.4361
1630.0	2631.0402	214.3002
1640.0	2631.1723	214.2769
1650.0	2631.2217	214.2838
1660.0	2631.3070	214.2904
1670.0	2631.2119	214.4053
1680.0	2631.3433	214.3759
1690.0	2631.4365	214.4425
1700.0	2631.4125	214.6430

Output DLIS Files

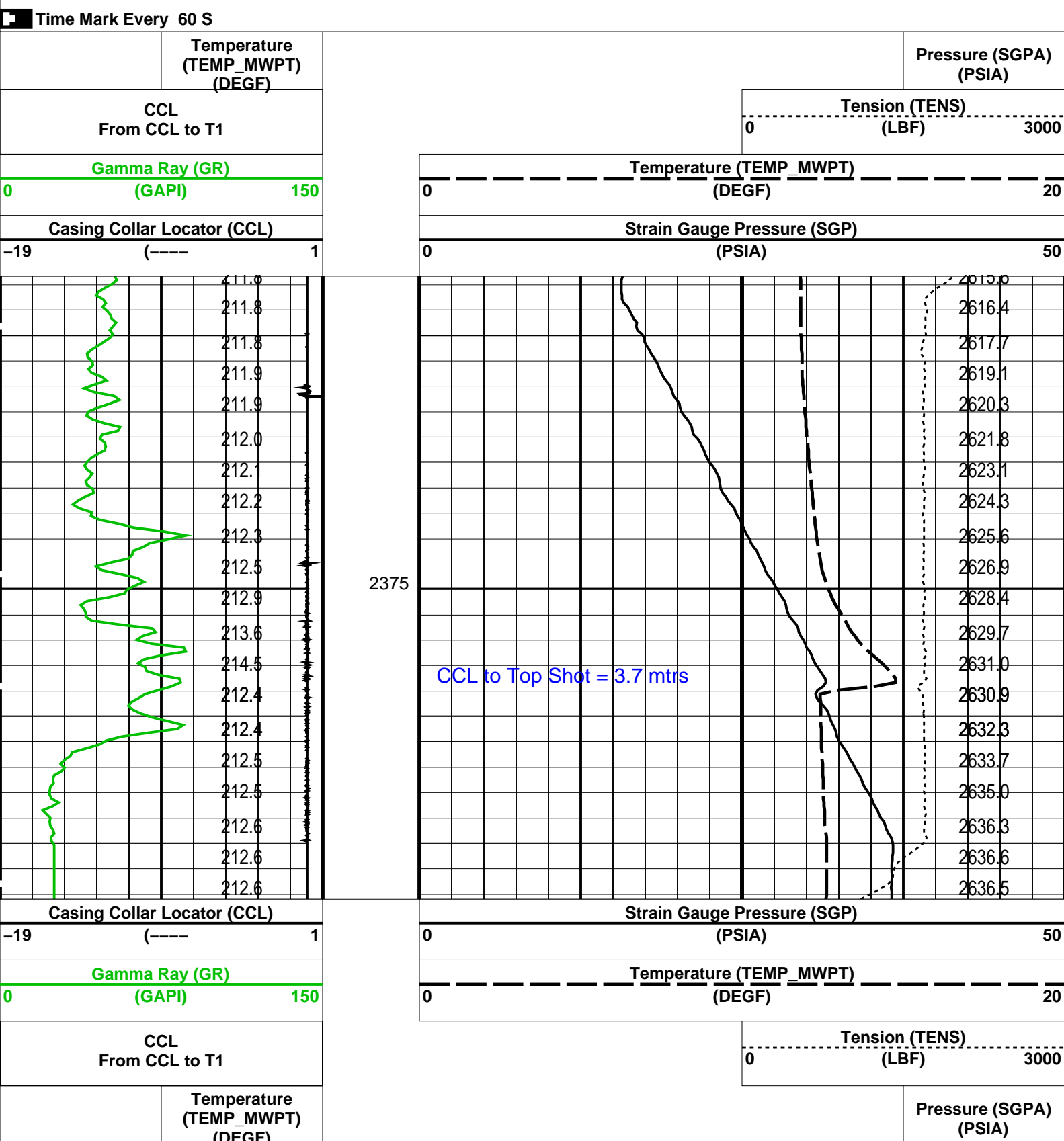
DEFAULT	PERFO_033LUP	FN:31	PRODUCER	12-Oct-2006 09:20	2387.2 M	2362.7 M
---------	--------------	-------	----------	-------------------	----------	----------

OP System Version: 14C0-302

MCM

MWP_GUN	SRC-3220-WPP-AAP5	MWPT-CA	SRC-3220-WPP-AAP5
MWGT-AA	SRC-3220-WPP-AAP5		

PIP SUMMARY



PIP SUMMARY

Parameters		
DLIS Name	Description	Value
MWPT-CA: MEASUREMENT WHILE PERFORATING TOOL		
DEVI_FL_CORR	Deviation Angle for Flow Line Correction	0 DEG
FLD	Flow Line Density	1 G/C3
MWPT_NULL_SOURCE	MWPT NULL Temperature Source	TEMS
MWPT_NULL_TEMP	MWPT NULL Temperature	0.0 DEGC
Format: MWP Vertical Scale: 1:200		Graphics File Created: 12-Oct-2006 09:20

OP System Version: 14C0-302

MCM

MWP_GUN
MWGT-AA

SRC-3220-WPP-AAP\$
SRC-3220-WPP-AAP\$

MWPT-CA

SRC-3220-WPP-AAP\$

Output DLIS Files

DEFAULT PERFO_033LUP FN:31 PRODUCER 12-Oct-2006 09:20



Correlation Pass

MAXIS Field Log

Output DLIS Files

DEFAULT PERFO_032LUP FN:30 PRODUCER 12-Oct-2006 09:15 2386.4 M 2362.7 M

OP System Version: 14C0-302

MCM

MWP_GUN
MWGT-AA

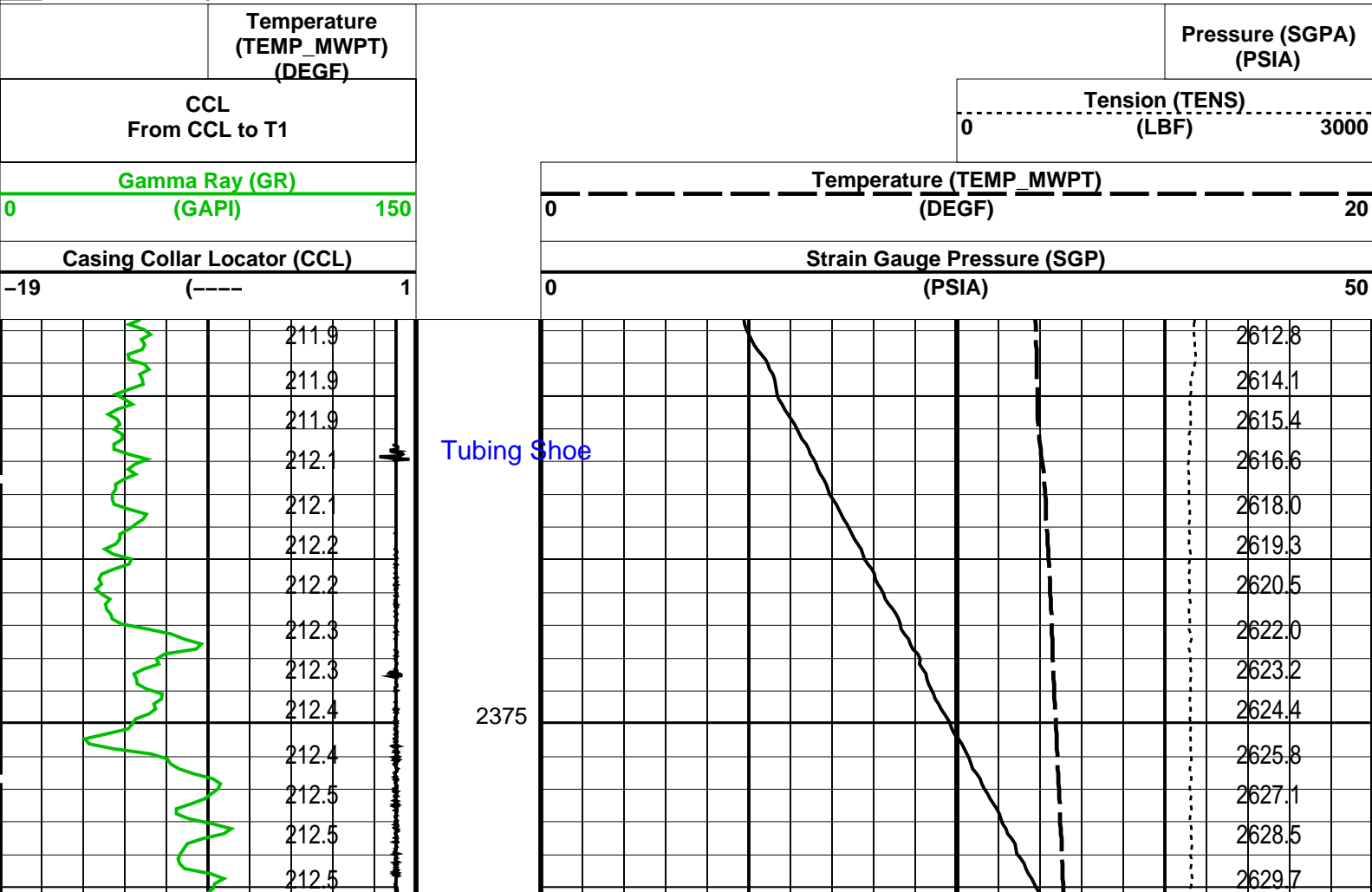
SRC-3220-WPP-AAP\$
SRC-3220-WPP-AAP\$

MWPT-CA

SRC-3220-WPP-AAP\$

PIP SUMMARY

☒ Time Mark Every 60 S



Input DLIS Files

DEFAULT PERFO_Perfo_WPGRT_008LUP FN:6 PRODUCER 10-Oct-2006 14:15 2397.1 M 2342.9 M

Output DLIS Files

DEFAULT PERFO_Perfo_WPGRT_013PUP FN:11 PRODUCER 11-Oct-2006 08:08 2391.8 M 2338.1 M

OP System Version: 14C0-302
MCM

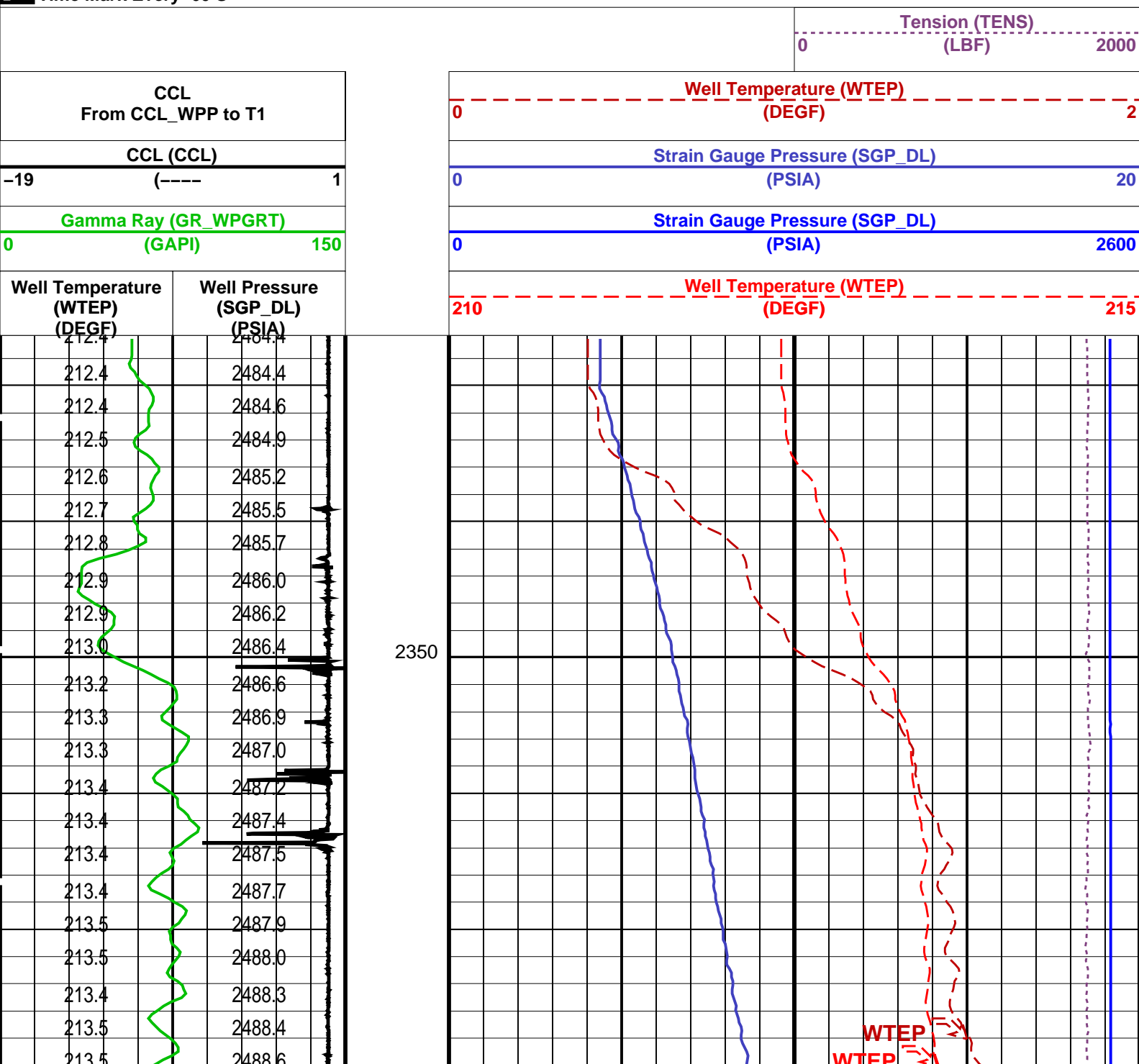
WPP_GUN SRC-3220-WPP-AAP5
WPPTT-AA/BA SRC-3220-WPP-AAP5
WPTET-AA SRC-3220-WPP-AAP5

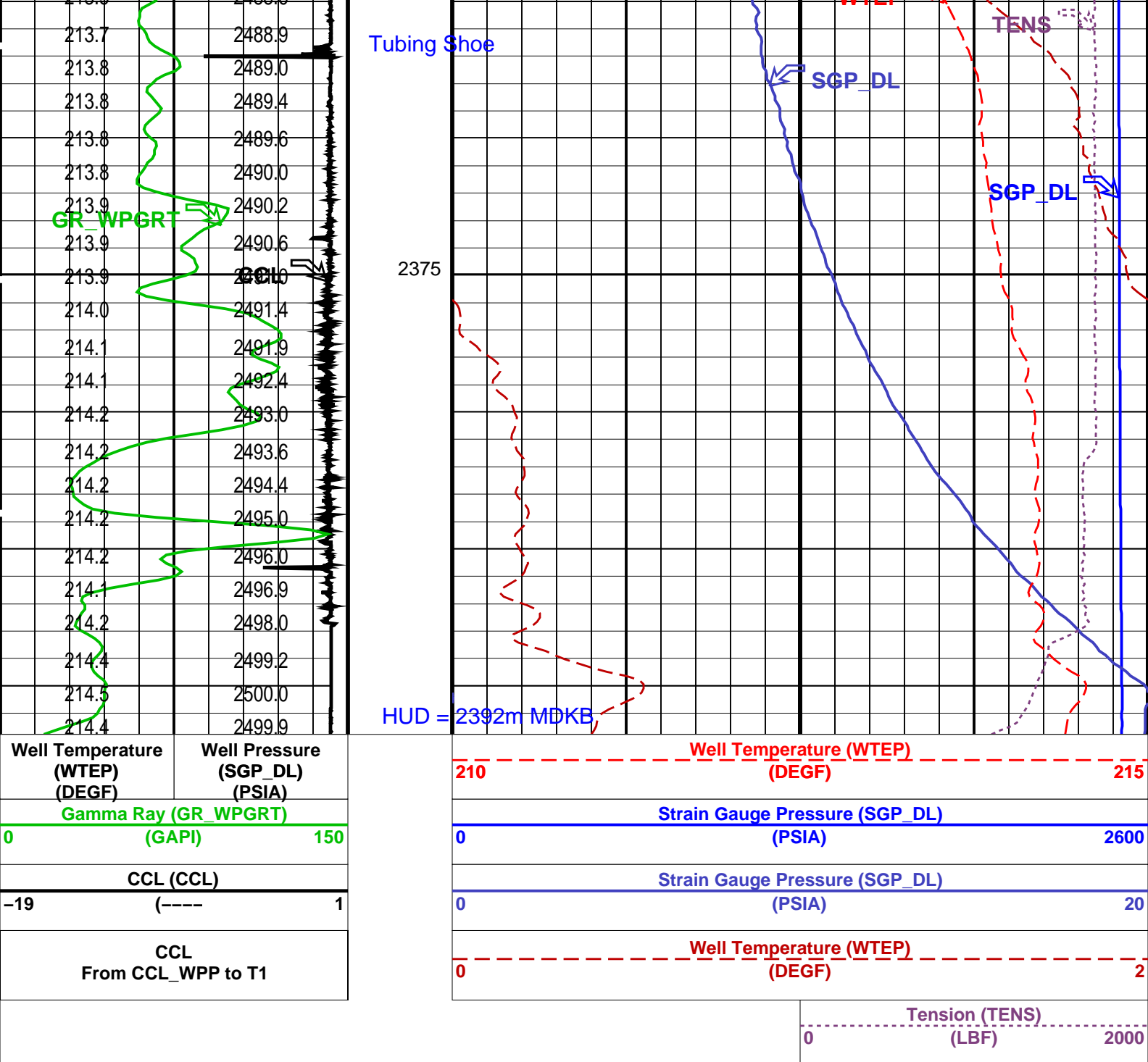
WPST-AB
WPGRT-A

SRC-3220-WPP-AAP5
14C0-302

PIP SUMMARY

Time Mark Every 60 S





PIP SUMMARY

Time Mark Every 60 S

Parameters

DLIS Name	Description	Value
WPST-AB: WPP Shooting Tool		
U-COMM_VOLT	ASFS Comm Voltage	50 V
U-ERSB_ON_TIME	ERSB Voltage Hold Time	180 S
U-SEC_ON_TIME	SECURE Voltage Hold Time	10 S
U-SHOOT_VOLT_LIM	Shooting Voltage Limit	510 V
WPPTT-AA/BA: WPP Pressure Temperature Tool		
ACUP	Constant Update Switch	INIT_STATION_LOG
PCTS	Pressure Correction Temperature Source	TEMS
WPTET-AA: WPP Telemetry Tool		
CCLD	CCL reset delay	12 IN
CCLG	Casing Collar Locator Gain	12DB
CCLT	CCL Detection Level	0.3
U-TILT_X_GAIN	WPTET Tilt X Gain	1
U-TILT_X_OFFSET	WPTET Tilt X Offset	0
U-TILT_Y_GAIN	WPTET Tilt Y Gain	1
U-TILT_Y_OFFSET	WPTET Tilt Y Offset	0
System and Miscellaneous		

DO PP	Depth Offset for Playback Playback Processing	-5.3 M NORMAL
Format: WPP_PT	Vertical Scale: 1:200	Graphics File Created: 11-Oct-2006 08:08
OP System Version: 14C0-302 MCM		
WPP_GUN WPPTT-AA/BA WPTET-AA	SRC-3220-WPP-AAP\$ SRC-3220-WPP-AAP\$ SRC-3220-WPP-AAP\$	WPST-AB WPGRT-A SRC-3220-WPP-AAP\$ 14C0-302
Input DLIS Files		
DEFAULT	PERFO_Perfo_WPGRT_008LUP	FN:6 PRODUCER 10-Oct-2006 14:15 2397.1 M 2342.9 M
Output DLIS Files		
DEFAULT	PERFO_Perfo_WPGRT_013PUP	FN:11 PRODUCER 11-Oct-2006 08:08

Company:	Esso Australia Ltd.	Schlumberger
Well:	B-13	
Field:	Bream B	
Rig :	Prod4	
Country:	Australia	
	2 1/8"Phased Powerjet Mwpt Perforation 7"HPI PSP Plug	