

Company: Esso Australia Ltd.

Well: A-19

Field: Flounder

Rig : Prod4 / Crane

Country: Australia

MWPT 2 1/8" Powerjet
Perforating Record
MPBT 7 5/8" Posiset Plug

Prod4 / Crane
Flounder
Gippsland
A-19

Company: Esso Australia Ltd.

LOCATION		
Gippsland	Elev.:	K.B. 48.8 m
Basin		G.L. 93 m
Bass Strait		D.F. 48.8 m
Permanent Datum:	M.S.L.	Elev.: 0 m
Log Measured From:	D.F.	48.8 m above Perm. Datum
Drilling Measured From:	D.F.	

Rig :		
Field:		
Location:		
Well:		
Company:		
State: Victoria	Max. Well Deviation 48 deg	Longitude 148 26' 17.735" E Latitude 038 18' 44.633" S

Logging Date	27-Aug-2006	
--------------	-------------	--

Run Number	One	
------------	-----	--

Depth Driller	3237 m	
---------------	--------	--

Schlumberger Depth	3049 m	
--------------------	--------	--

Bottom Log Interval	3046.5 m	
---------------------	----------	--

Top Log Interval	2650 m	
------------------	--------	--

Casing Fluid Type	Production Fluids	
-------------------	-------------------	--

Salinity		
----------	--	--

Density		
---------	--	--

Fluid Level	670 m	
-------------	-------	--

BIT/CASING/TUBING STRING		
--------------------------	--	--

Bit Size	9.000 in	
----------	----------	--

From	0 m	
------	-----	--

To	0 m	
----	-----	--

Casing/Tubing Size	7.625 in	
--------------------	----------	--

Weight	29.7 lbm/ft	
--------	-------------	--

Grade	L-80	
-------	------	--

From	20.29 m	
------	---------	--

To	3470 m	
----	--------	--

Maximum Recorded Temperatures	230 degF	
-------------------------------	----------	--

Logger On Bottom	27-Aug-2006	16:00
------------------	-------------	-------

Unit Number	LEE001	AUSL
-------------	--------	------

Recorded By	G Wright , S Gilbert	
-------------	----------------------	--

Witnessed By	B White	
--------------	---------	--

Run 1

PVT DATA

Oil Density	
Water Salinity	
Gas Gravity	
Bo	
Bw	
1/Bg	
Bubble Point Pressure	
Bubble Point Temperature	
Solution GOR	
Maximum Deviation	48 deg

CEMENTING DATA

Primary/Squeeze	Primary
Casing String No	
Lead Cement Type	
Volume	
Density	
Water Loss	
Additives	
Tail Cement Type	
Volume	
Density	
Water Loss	
Additives	

Expected Cement Top

Logging Date	
--------------	--

Run Number	
------------	--

Depth Driller	
---------------	--

Schlumberger Depth	
--------------------	--

Bottom Log Interval	
---------------------	--

Top Log Interval	
------------------	--

Casing Fluid Type	
-------------------	--

Salinity	
----------	--

Density	
---------	--

Fluid Level	
-------------	--

BIT/CASING/TUBING STRING	
--------------------------	--

Bit Size	
----------	--

From	
------	--

To	
----	--

Casing/Tubing Size	
--------------------	--

Weight	
--------	--

Grade	
-------	--

From	
------	--

To	
----	--

Maximum Recorded Temperatures	
-------------------------------	--

Logger On Bottom	
------------------	--

Unit Number	
-------------	--

Recorded By	
-------------	--

Witnessed By	
--------------	--

DEPTH SUMMARY LISTING

Date Created: 7-AUG-2006 12:52:54

Depth System Equipment	
------------------------	--

Depth Measuring Device		Tension Device		Logging Cable	
Type:	IDW–H	Type:	CMTD–C	Type:	2–32ZT
Serial Number:	797	Serial Number:	1037	Serial Number:	26087
Calibration Date:	1–May–2006	Calibration Date:	7–Aug–2006	Length:	6850.06 M
Calibrator Serial Number:	1009	Calibrator Serial Number:	1174	Conveyance Method:	Wireline
Calibration Cable Type:	2–32ZT	Calibration Gain:	1.10	Rig Type:	Offshore_Fixed
Wheel Correction 1:	–3	Calibration Offset:	325.00		
Wheel Correction 2:	–3				

Depth Control Parameters	
Log Sequence:	Subsequent Trip To the Well
Reference Log Name:	Solar Log
Reference Log Run Number:	1
Reference Log Date:	12-Oct-2004

Depth Control Remarks	
-----------------------	--

<ol style="list-style-type: none">1. Correlated to Solar Log provided by client.2. IDW used as primary depth control.3. Z-Chart used as secondary depth control.4.5.6.

DISCLAIMER

THE USE OF AND RELIANCE UPON THIS RECORDED-DATA BY THE HEREIN NAMED COMPANY (AND ANY OF ITS AFFILIATES, PARTNERS, REPRESENTATIVES, AGENTS, CONSULTANTS AND EMPLOYEES) IS SUBJECT TO THE TERMS AND CONDITIONS AGREED UPON BETWEEN SCHLUMBERGER AND THE COMPANY, INCLUDING: (a) RESTRICTIONS ON USE OF THE RECORDED-DATA; (b) DISCLAIMERS AND WAIVERS OF WARRANTIES AND REPRESENTATIONS REGARDING COMPANY'S USE OF AND RELIANCE UPON THE RECORDED-DATA; AND (c) CUSTOMER'S FULL AND SOLE RESPONSIBILITY FOR ANY INFERENCE DRAWN OR DECISION MADE IN CONNECTION WITH THE USE OF THIS RECORDED-DATA.

OTHER SERVICES1
OS1: None
OS2:
OS3:
OS4:
OS5:

REMARKS: RUN NUMBER 1

Log correlated to ExxonMobil Solar correlation composite log

dated 12-Oct-2004.

Maximum well deviation = 48 degrees at 2530m MDKB.

Objectives: Perforate Well at 3040.5m MDKB to 3041.5m MDKB

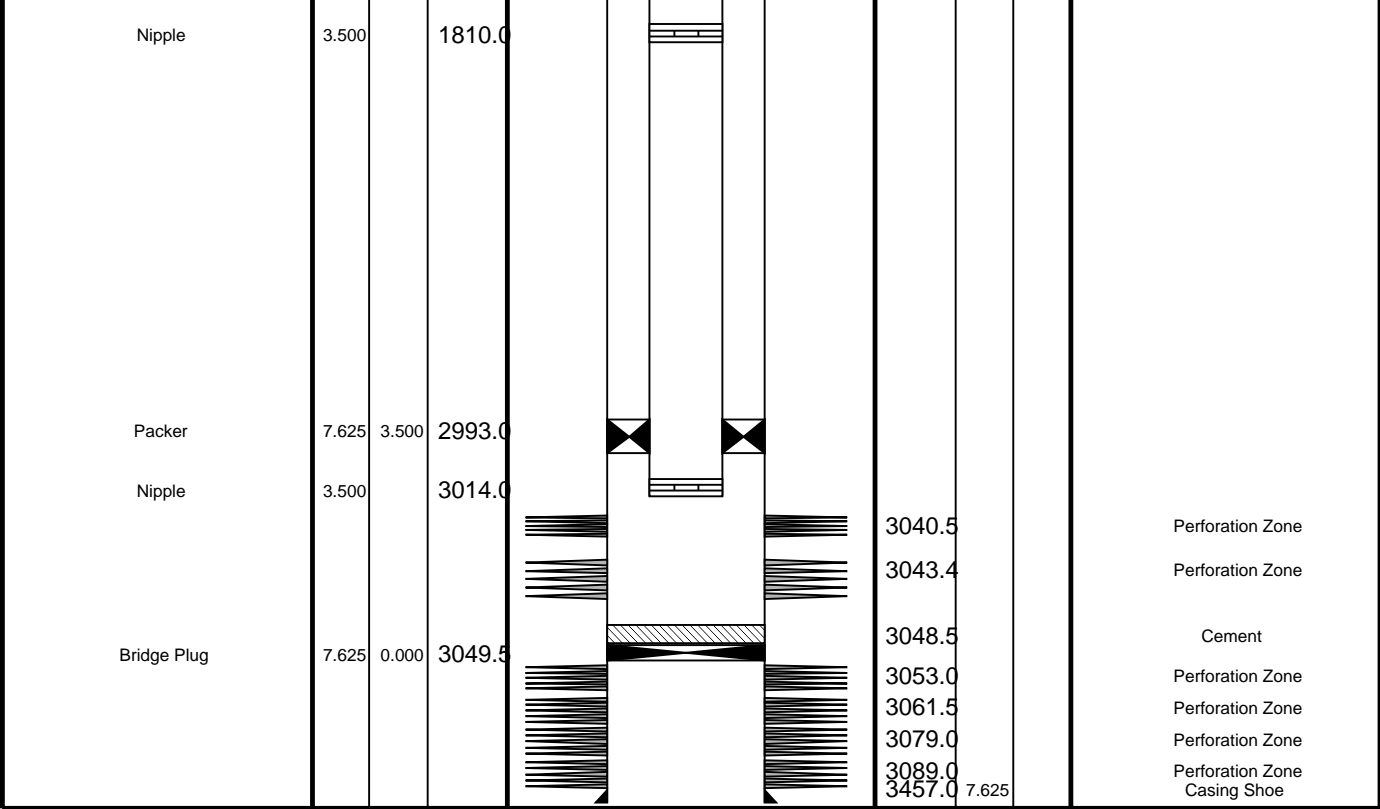
and 3043.5m MDKB to 3046.5m MDKB

Set MPBT @ 3050m MDKB. Then dump 1m of Cement on top of the plug

SRHD: 2222pcin SRHT: 220dcgf

Crew : A Hall , G Brady , J Light , J Annear

DOWNHOLE EQUIPMENT		DOWNHOLE EQUIPMENT	
SWBS-B 762	10.83	SWBS-B 761	10.20
SWBS-B 763	10.14	SWBS-B 762	9.52
SWHS-A 726	9.46	SWBS-B 763	8.83
CCL-L 4195	9.13		8.14
MPSU-CA 1011	8.67	SWHS-A 726	7.81
		MWGT-AA MWPG-AA 69 MWGH-AA 69	2.41
		MWPT-CA MWPH-AA 74 MWPS-AA 74	6.84
			4.02



Job Events Summary

MAXIS Field Log

Schlumberger Job Event Summary

Time	Elapsed Time	Depth (M)	File
Log Pass (down)	27-Aug-2006 12:55	000:13	1014.4 - 3081.2 PERFO_010LDP
Log Pass (up)	27-Aug-2006 13:08	000:07	3081.2 - 3018.9 PERFO_011LUP
Log Pass (up)	27-Aug-2006 13:17	000:45	3053.8 - 3013.3 PERFO_012LUP
Station Log	27-Aug-2006 13:21	000:34	3037.0 - 5.2 PERFO_013LTP

	Time	Elapsed Time	Depth (M)	File
Log Pass (down)	28-Aug-2006 10:44	000:31	11.3 - 3031.1	PERFO_039LDP
Log Pass (up)	28-Aug-2006 11:21	000:07	3040.4 - 2997.1	PERFO_042LUP
Log Pass (down)	28-Aug-2006 12:48	000:30	-2.3 - 3040.5	PERFO_044LDP
Log Pass (up)	28-Aug-2006 13:18	000:07	3040.5 - 2996.9	PERFO_045LUP

Schlumberger

Cement Dump Bailer

MAXIS Field Log

Output DLIS Files

DEFAULT PERFO_045LUP FN:43 PRODUCER 28-Aug-2006 13:18 3040.5 M 2996.9 M

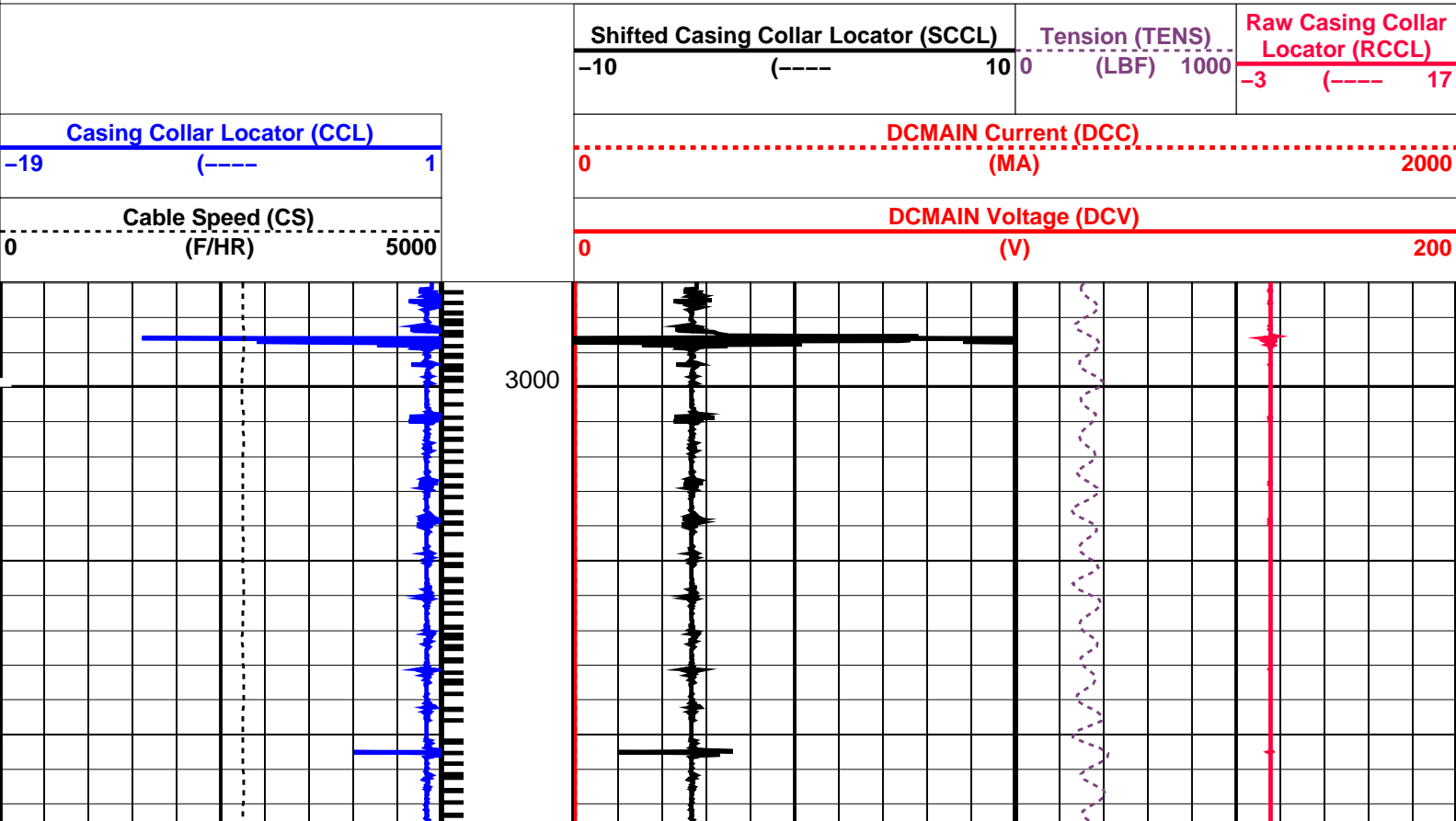
OP System Version: 14C0-302
MCM

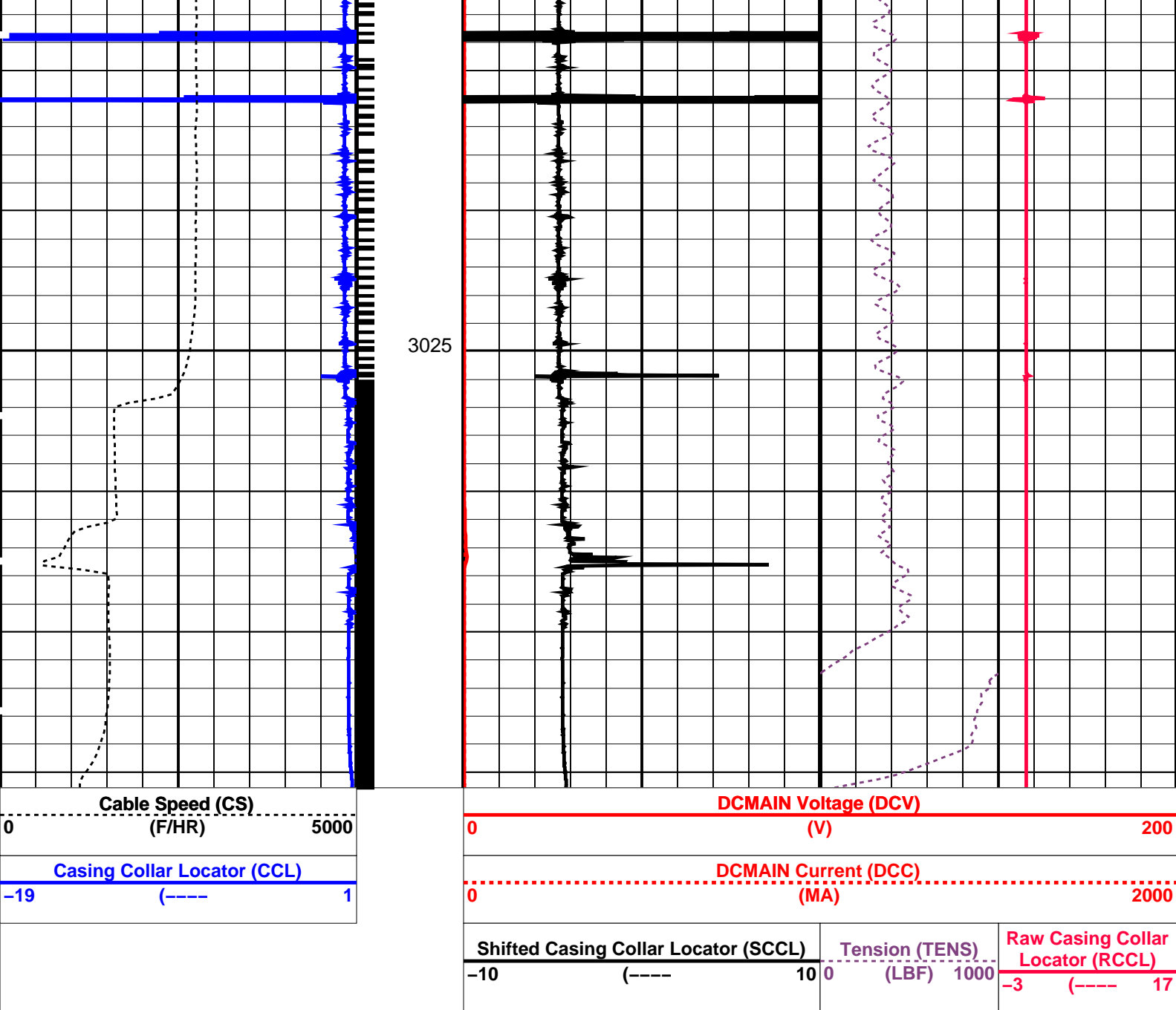
SHM_GUN 14C0-302 CCL-L 14C0-302

PIP SUMMARY

└─ Casing Collars

Time Mark Every 60 S





PIP SUMMARY			
Time Mark Every 60 S		Casing Collars	
Parameters			
DLIS Name	Description	Value	
CCL-L: Casing Collar Locator	CCL reset delay	12	IN
CCLD	CCL Detection Level	0.3	V
CCLT			
Format: PERFO	Vertical Scale: 1:200	Graphics File Created: 28-Aug-2006 13:18	
OP System Version: 14C0-302			
MCM			
SHM_GUN	14C0-302	CCL-L	14C0-302
Output DLIS Files			
DEFAULT	PERFO_045LUP	FN:43	PRODUCER 28-Aug-2006 13:18

Output DLIS Files

DEFAULT PERFO_042LUP FN:40 PRODUCER 28-Aug-2006 11:21 3040.4 M 2997.1 M

OP System Version: 14C0-302
MCM

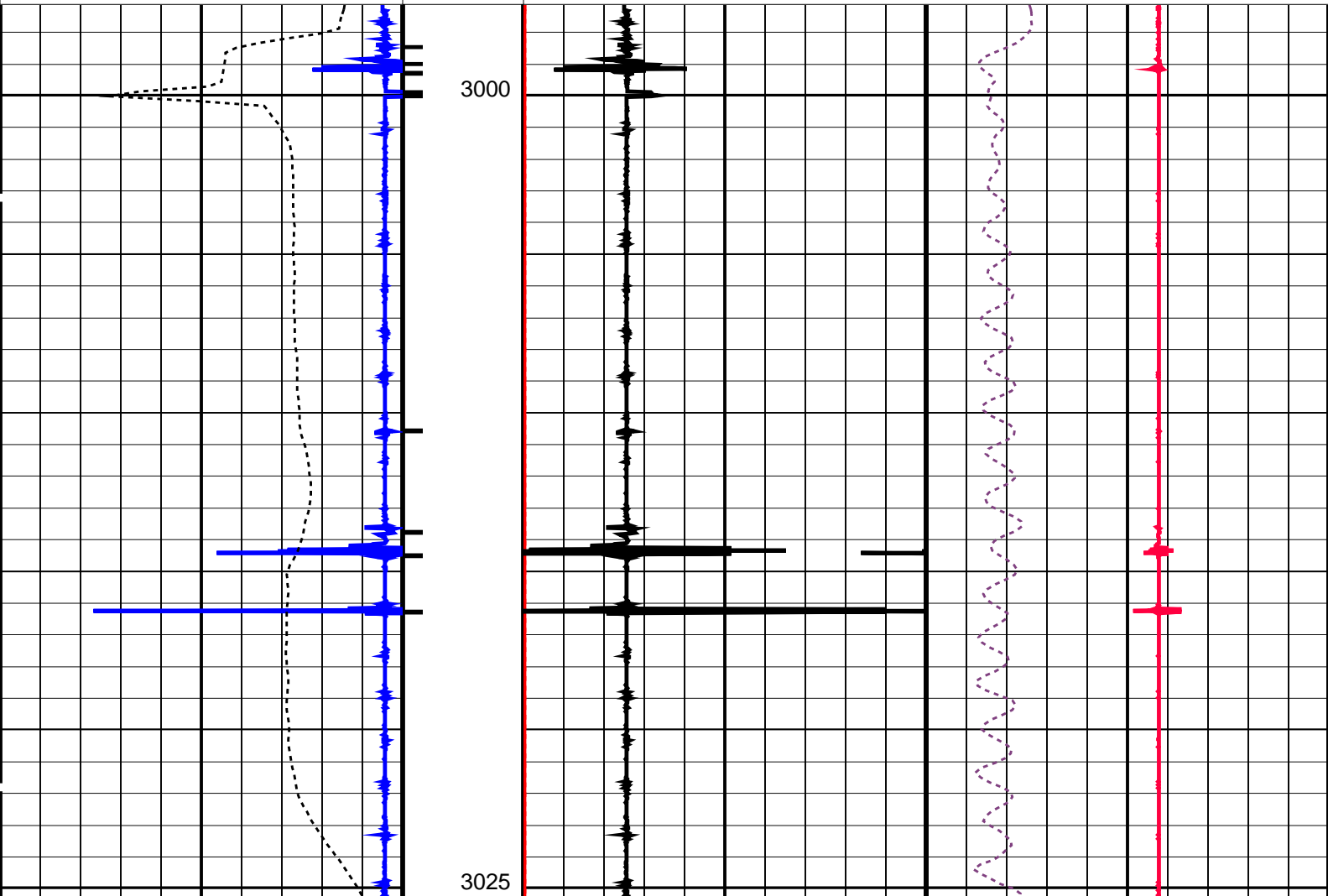
SHM_GUN 14C0-302 CCL-L 14C0-302

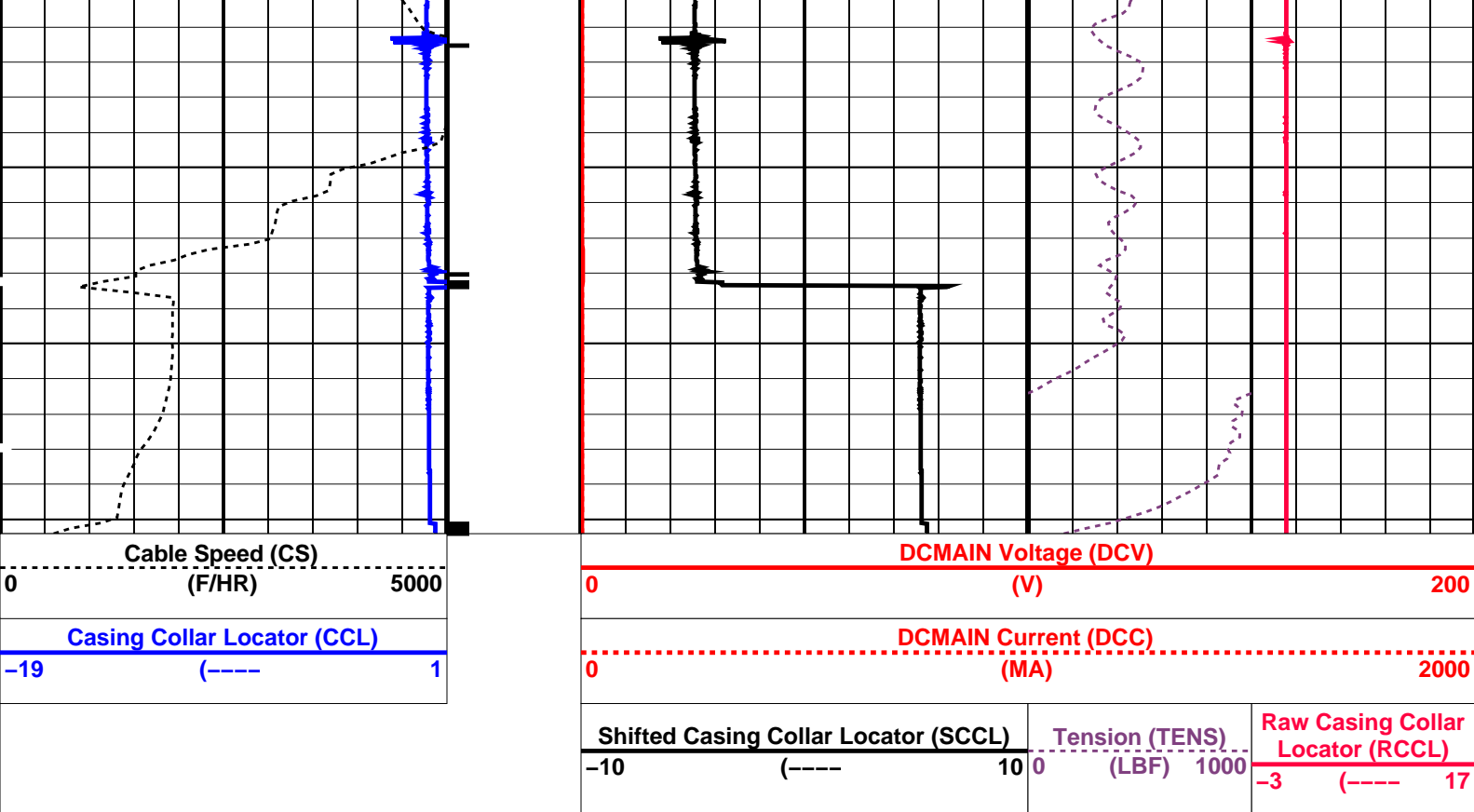
PIP SUMMARY

└─ Casing Collars

Time Mark Every 60 S

Shifted Casing Collar Locator (SCCL)		Tension (TENS)	Raw Casing Collar Locator (RCCL)
-10	(----	0	-3
	10	(LBF) 1000	(---- 17
Casing Collar Locator (CCL)		DCMAIN Current (DCC)	
-19	(----	0	2000
	1	(MA)	
Cable Speed (CS)		DCMAIN Voltage (DCV)	
0	(F/HR) 5000	0	200
		(V)	





PIP SUMMARY

Time Mark Every 60 S

Casing Collars

Parameters		
DLIS Name	Description	Value
CCL-L: Casing Collar Locator		
CCLD	CCL reset delay	12 IN
CCLT	CCL Detection Level	0.3 V

Format: PERFO Vertical Scale: 1:200 Graphics File Created: 28-Aug-2006 11:21

OP System Version: 14C0-302			
MCM			
SHM_GUN	14C0-302	CCL-L	14C0-302

Output DLIS Files			
DEFAULT	PERFO_042LUP	FN:40	PRODUCER 28-Aug-2006 11:21

Setting The Plug
Top of Plug @ 3049.5m MDKB

MAXIS Field Log

Output DLIS Files			
DEFAULT	MPBT_035LUP	FN:33	PRODUCER 28-Aug-2006 08:01

OP System Version: 14C0-302
MCM

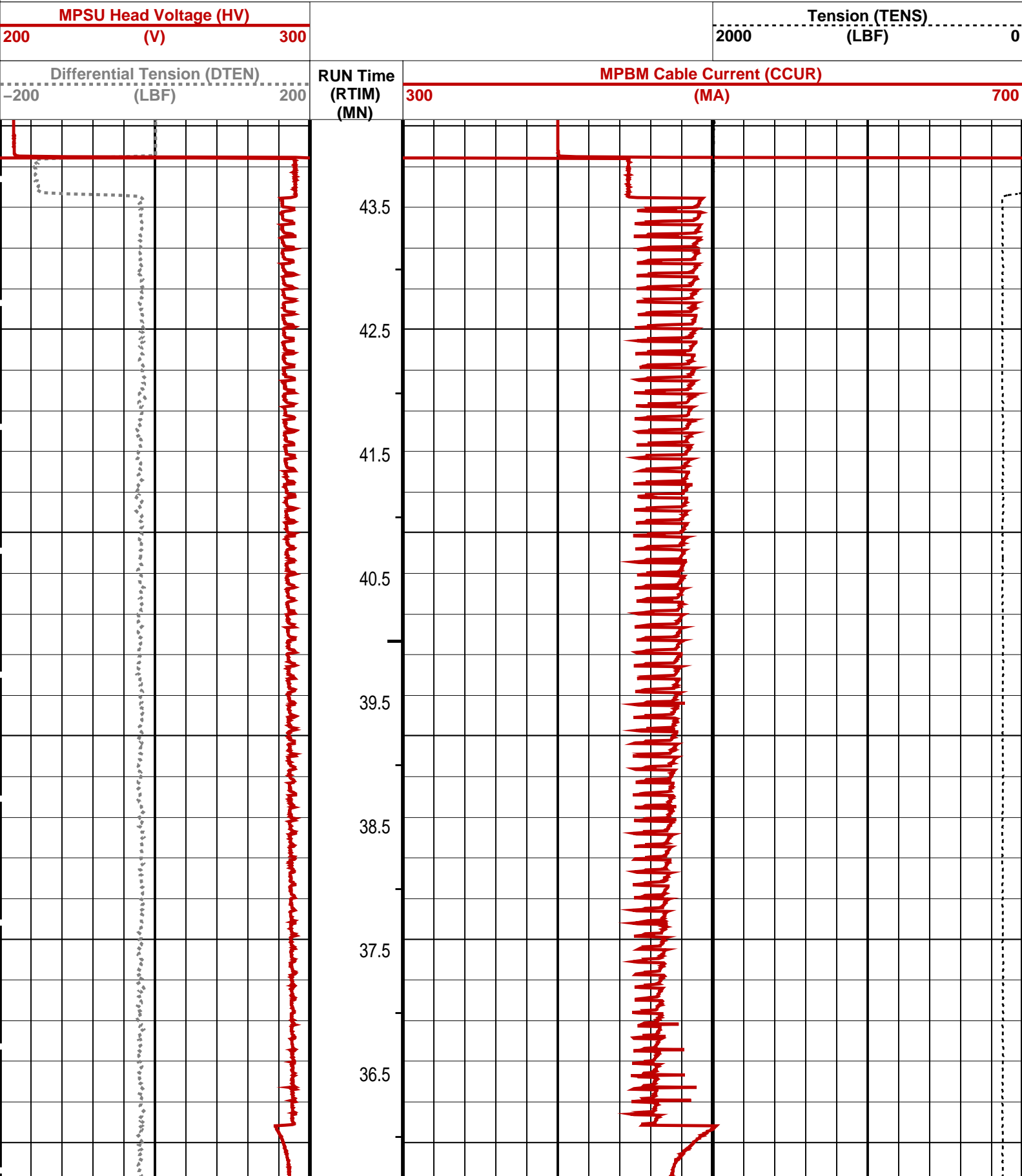
MPEX-7.625" mpex
CCL-L 14C0-302

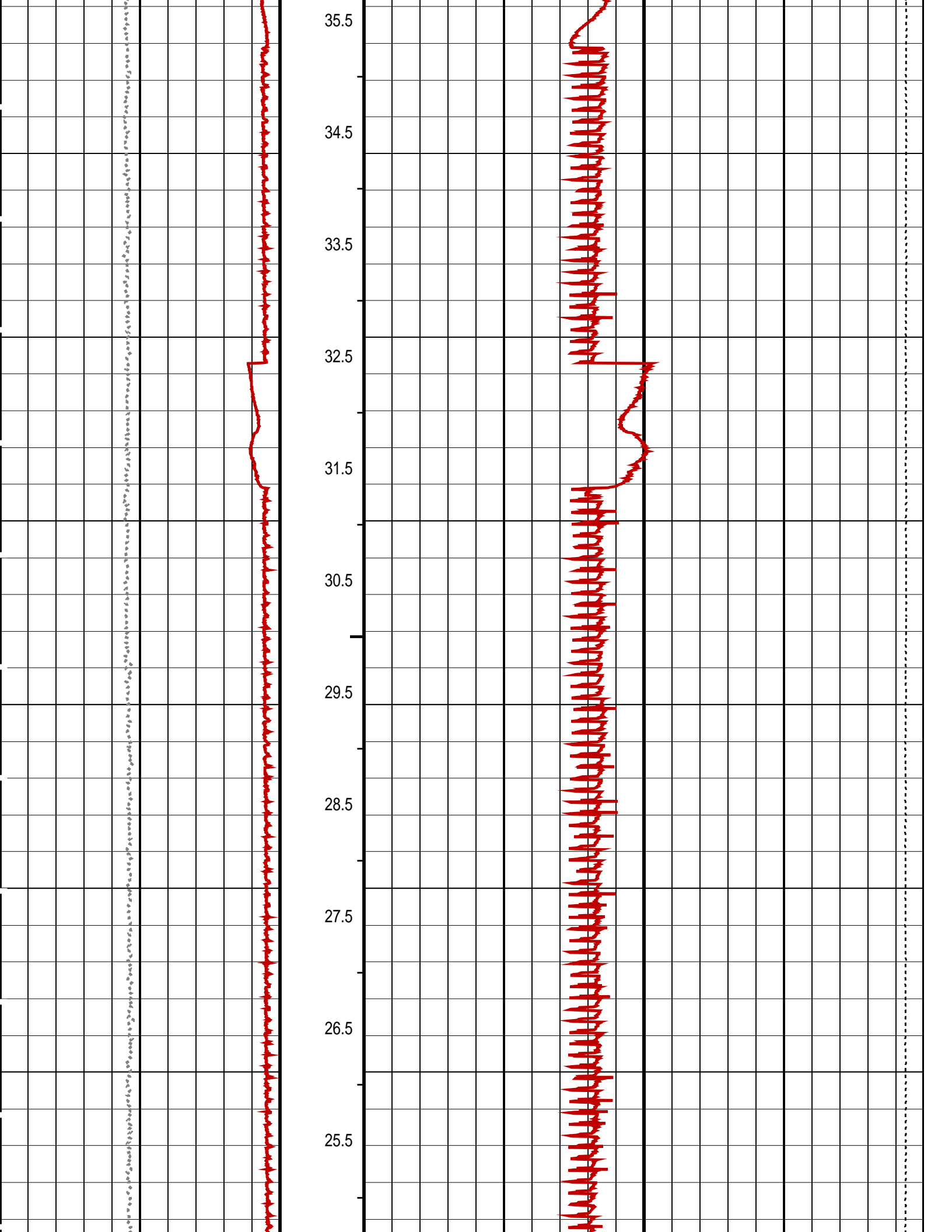
MPSU-CA 14C0-302

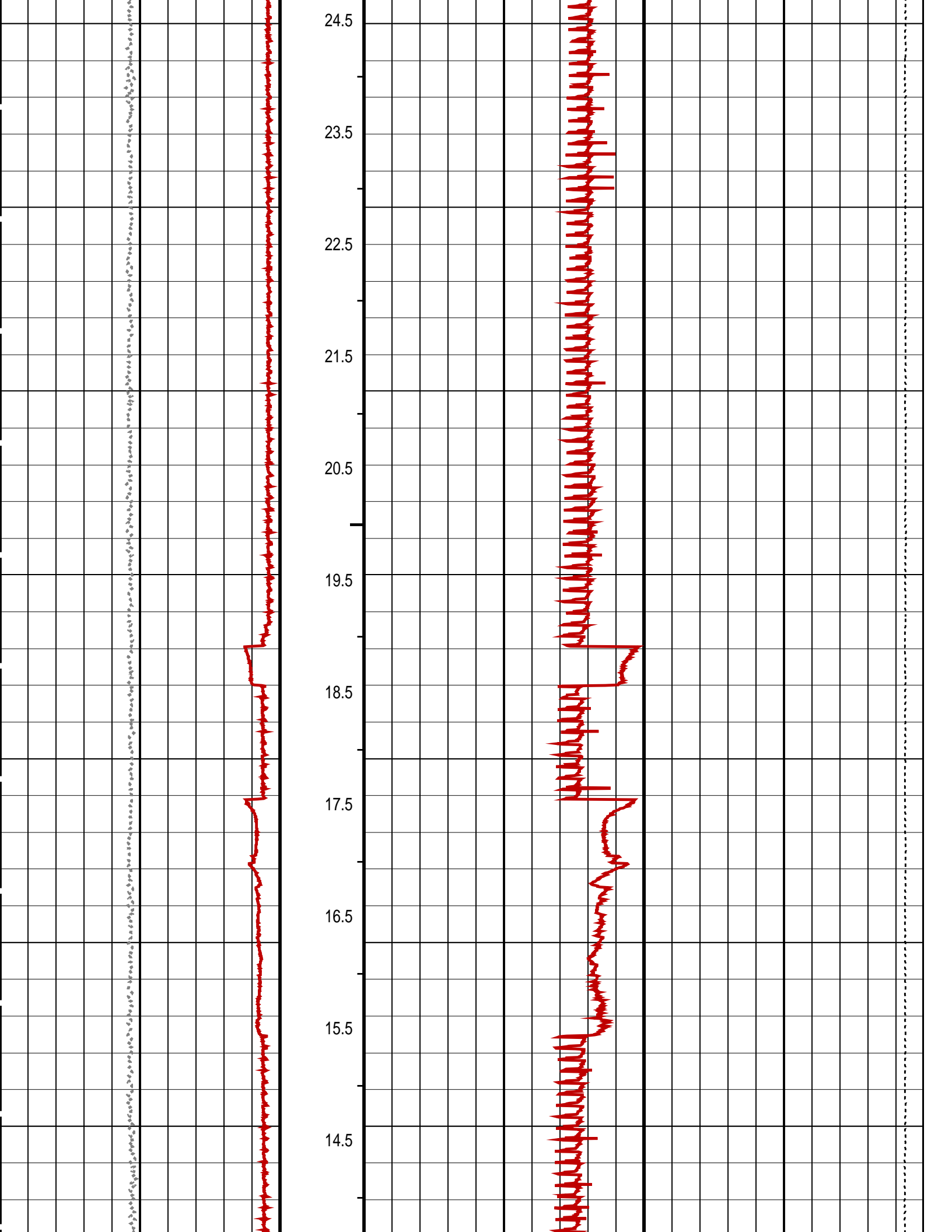
PIP SUMMARY

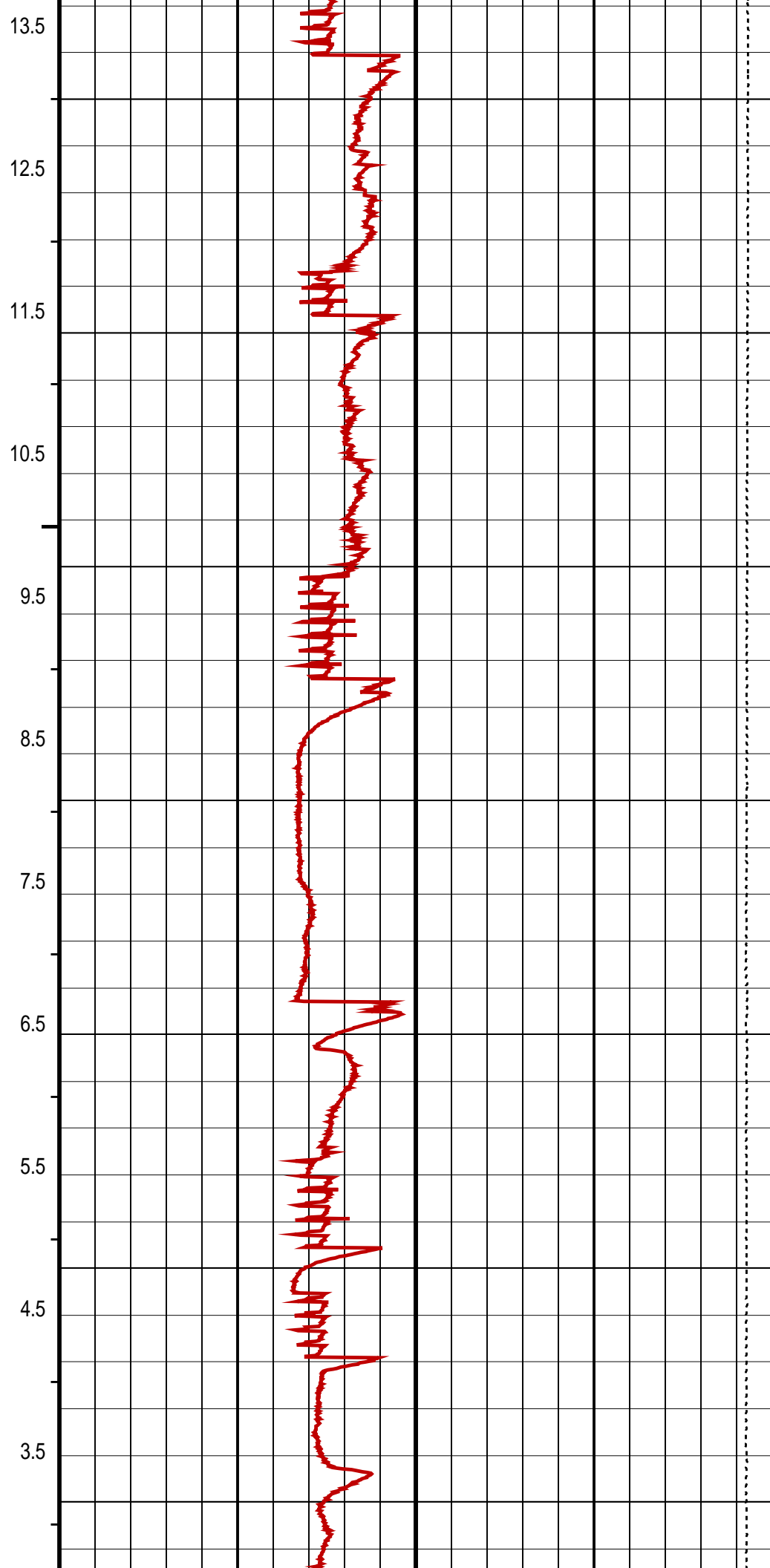
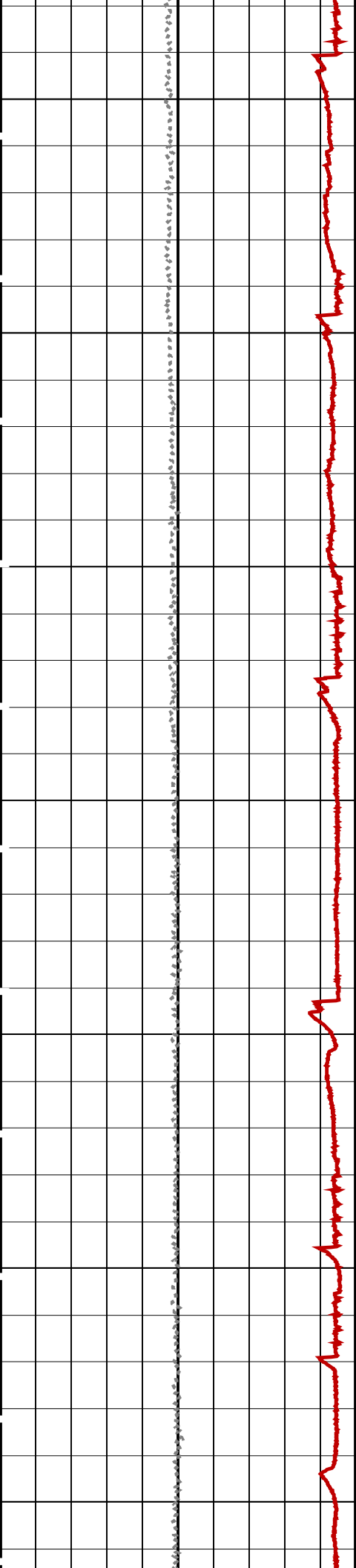
- └ MPSU Run Time Every 1 MN
- └ MPSU Run Time Every 10 MN

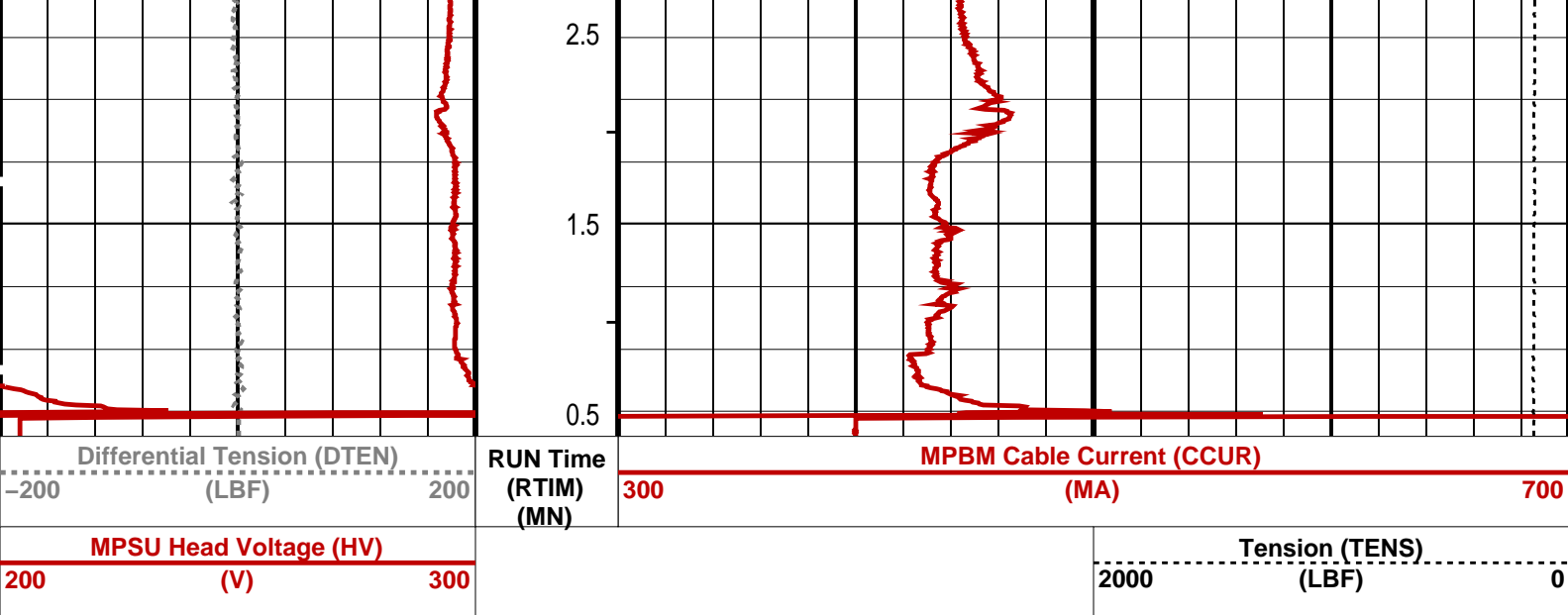
Time Mark Every 60 S












PIP SUMMARY
└ MPSU Run Time Every 1 MN
└ MPSU Run Time Every 10 MN
Time Mark Every 60 S

Parameters		
DLIS Name	Description	Value
IPUMP	MPSU-CA: MECHANICAL PLUGBACK SETTING UNIT Intensifier Pump	TRUE
Format: MPBT Vertical Scale: 1:600		Graphics File Created: 28-Aug-2006 08:01

OP System Version: 14C0-302
MCM
MPEX-7.625" mpex MPSU-CA 14C0-302
CCL-L 14C0-302

Output DLIS Files		
DEFAULT	MPBT_035LUP	FN:33 PRODUCER 28-Aug-2006 08:01



Dummy Plug

MAXIS Field Log

Company: Esso Australia Ltd. Well: A-19

Input DLIS Files		
DEFAULT	PSP_024LUP	FN:22 PRODUCER 27-Aug-2006 16:07 3076.2 M 3000.3 M
Output DLIS Files		
DEFAULT	PSP_026PUP	FN:24 PRODUCER 27-Aug-2006 17:04 3075.4 M 2994.2 M

OP System Version: 14C0-302
MCM

Time Mark Every 60 S

0 (LBF) 2500

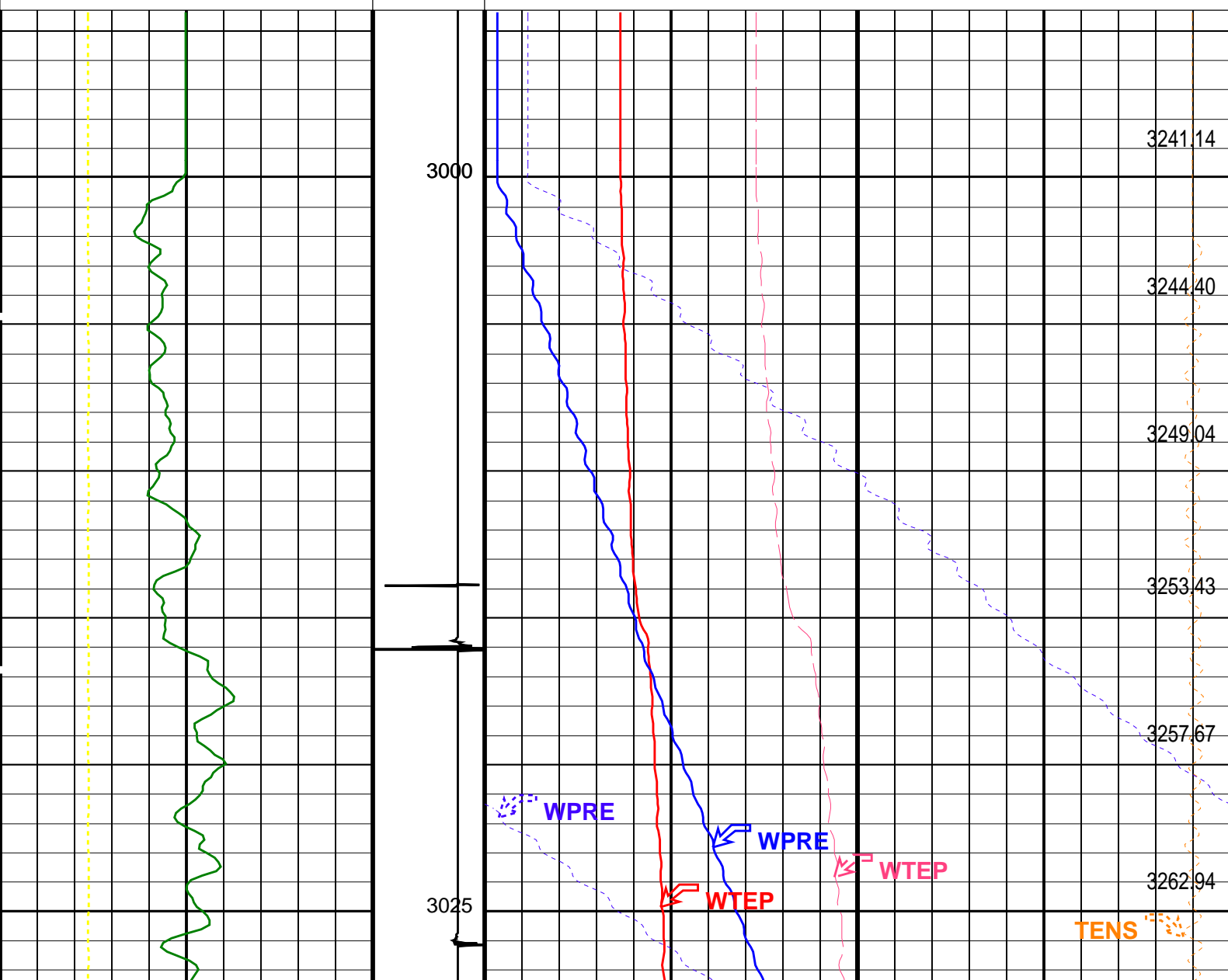
A horizontal number line with arrows at both ends. It is marked with the number 0 on the left and 20 on the right. A tick mark is placed at the midpoint, labeled with the number 10. Below the number 10, the text "(PSIA)" is written.

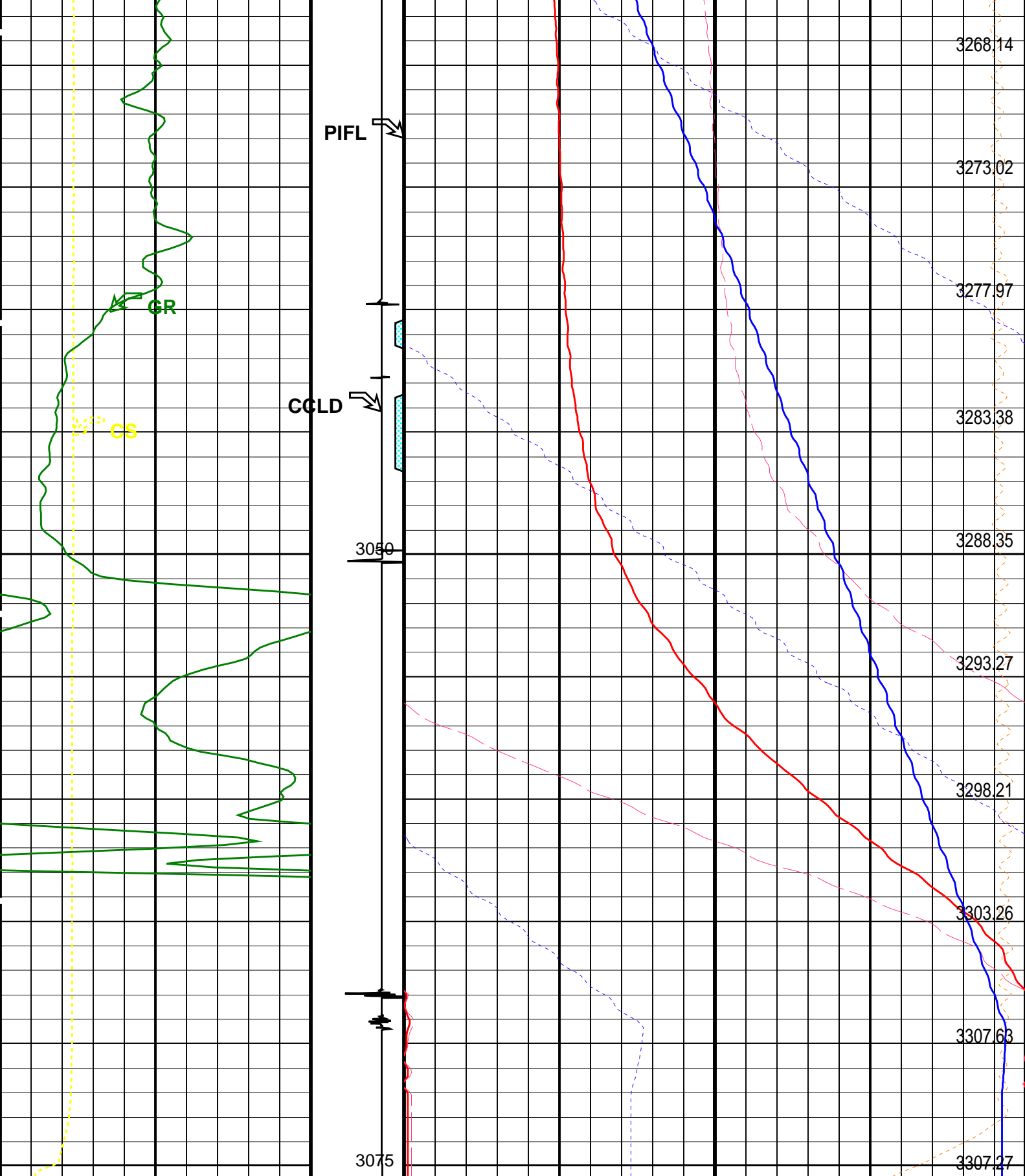
3240	(PSIA)	3310
------	--------	------

0 (GAPI) 150

0 (DEGF) 2

224 (DEGF) 228





Cable Speed (CS) (F/HR)	Perfo Zone (PIFL) 20 (---- 0	Well Temperature (WTEP) (DEGF)
Gamma Ray (GR) (GAPI)	Discriminat ed CCL (CCLD) 3 (V) -1	Well Temperature (WTEP) (DEGF)
	Perfo	

Perfo Zone From PERFO_ CURVE to D3T	Well Pressure (WPRE)		
	3240	(PSIA)	3310
	Amplified Well Pressure (WPRE)		
	0	(PSIA)	20
	0	Tension (TENS) (LBF)	2500
			Well Pressure (WPRE) (PSIA)

PIP SUMMARY		
Time Mark Every 60 S	Format: PSP_1	Vertical Scale: 1:200
Graphics File Created: 27-Aug-2006 17:04		

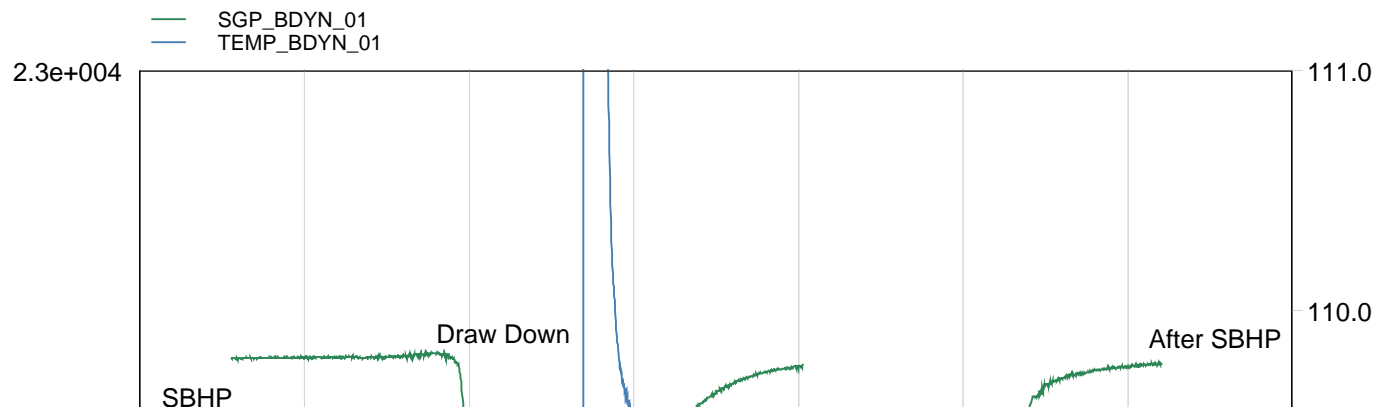
OP System Version: 14C0-302		
MCM		
PSPT-A/B	14C0-302	

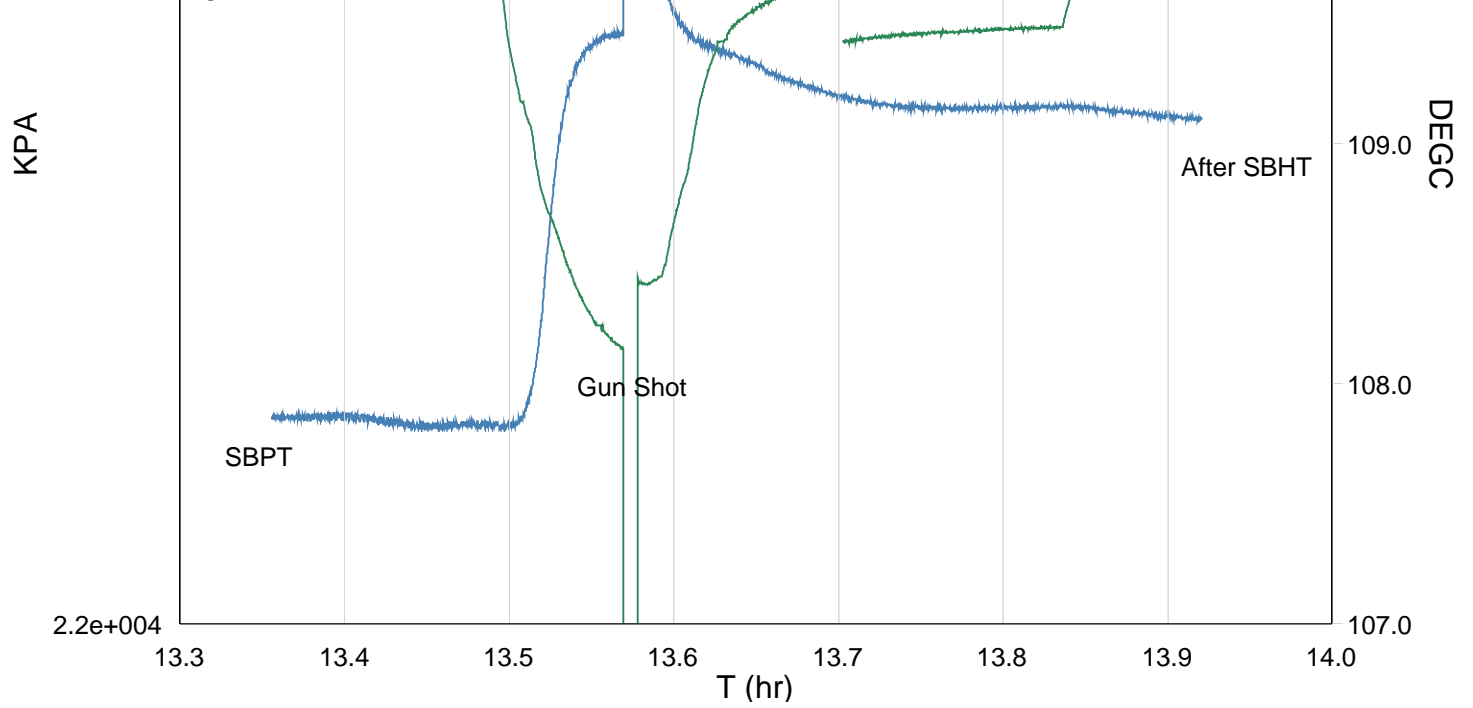
Parameters		
DLIS Name	Description	Value
DO PP	System and Miscellaneous Depth Offset for Playback Playback Processing	-0.8 M NORMAL

Input DLIS Files					
DEFAULT	PSP_024LUP	FN:22	PRODUCER	27-Aug-2006 16:07	3076.2 M 3000.3 M
Output DLIS Files					
DEFAULT	PSP_026PUP	FN:24	PRODUCER	27-Aug-2006 17:04	

Shoot Gun

MAXIS Field Log





TIME TEMP_MWPT_S SGPA_SL

3600.0	228.39	3291.481
3540.0	228.40	3291.142
3480.0	228.42	3290.758
3420.0	228.44	3289.849
3360.0	228.48	3287.287
3300.0	228.48	3281.009
3240.0	228.48	3280.847
3180.0	228.47	3280.805
3120.0	228.47	3280.421
3060.0	228.48	3280.303
3000.0	228.48	3280.064
2940.0	228.49	3279.676
2880.0	228.52	3279.289
2820.0	228.57	3278.696
2760.0	228.64	3277.835
2700.0	228.71	3276.372
2640.0	228.78	3274.154
2580.0	228.84	3270.048
2520.0	228.95	3258.446
2460.0	229.27	3239.617
2400.0	236.27	3233.105
2340.0	229.04	3233.282
2280.0	228.91	3238.279
2220.0	228.26	3248.411
2160.0	226.41	3264.311
2100.0	226.07	3282.382
2040.0	226.09	3293.342
1980.0	226.08	3292.636
1920.0	226.09	3292.618
1860.0	226.13	3292.785
1800.0	226.11	3292.691
1740.0	226.13	3292.584
1680.0	226.14	3292.480
1620.0	226.15	3292.487



Shooting Pass
Top Shot @ 3040.5m MDKB

MAXIS Field Log

Output DLIS Files

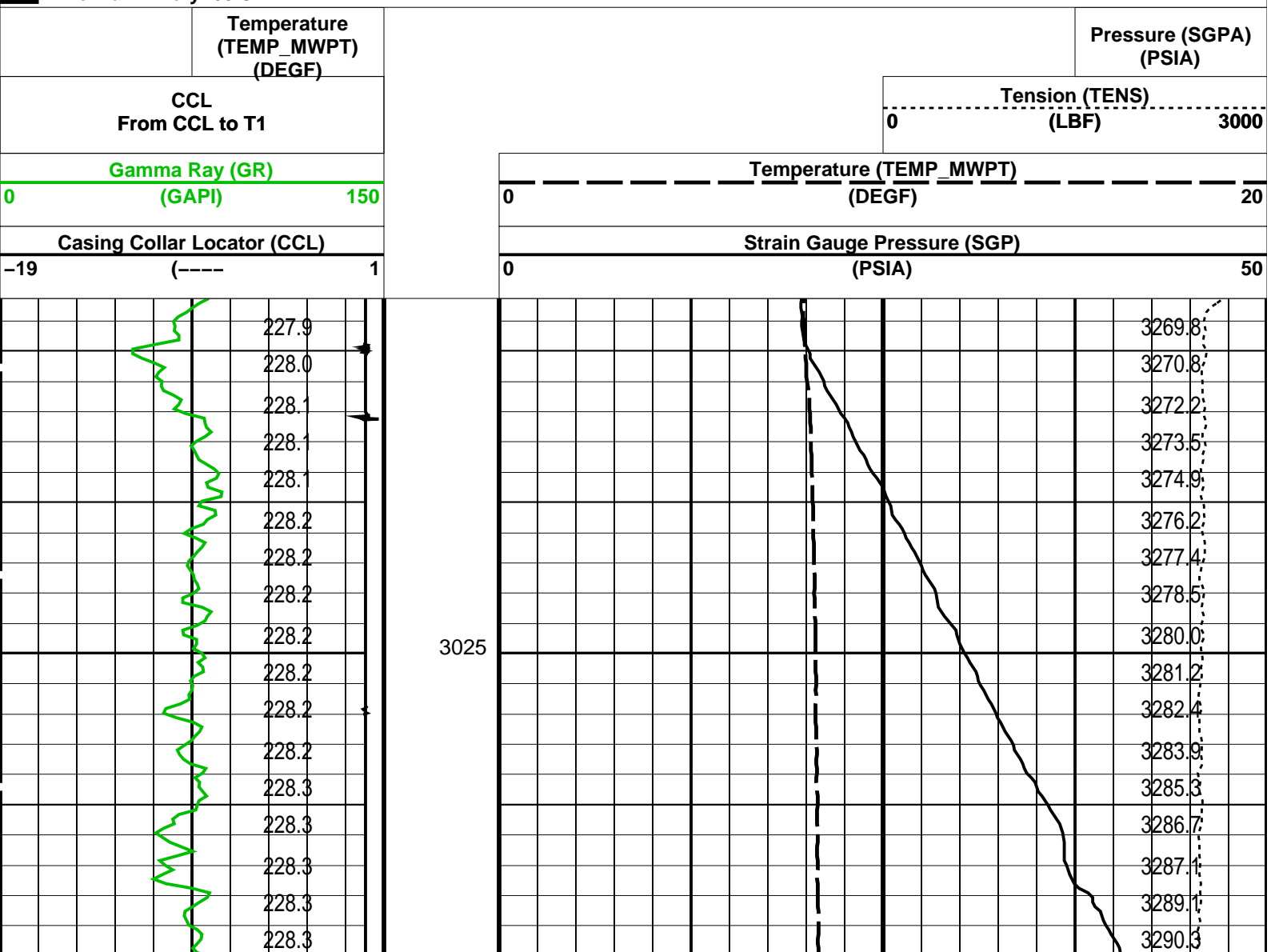
DEFAULT PERFO_012LUP FN:10 PRODUCER 27-Aug-2006 13:17 3053.8 M 3013.3 M

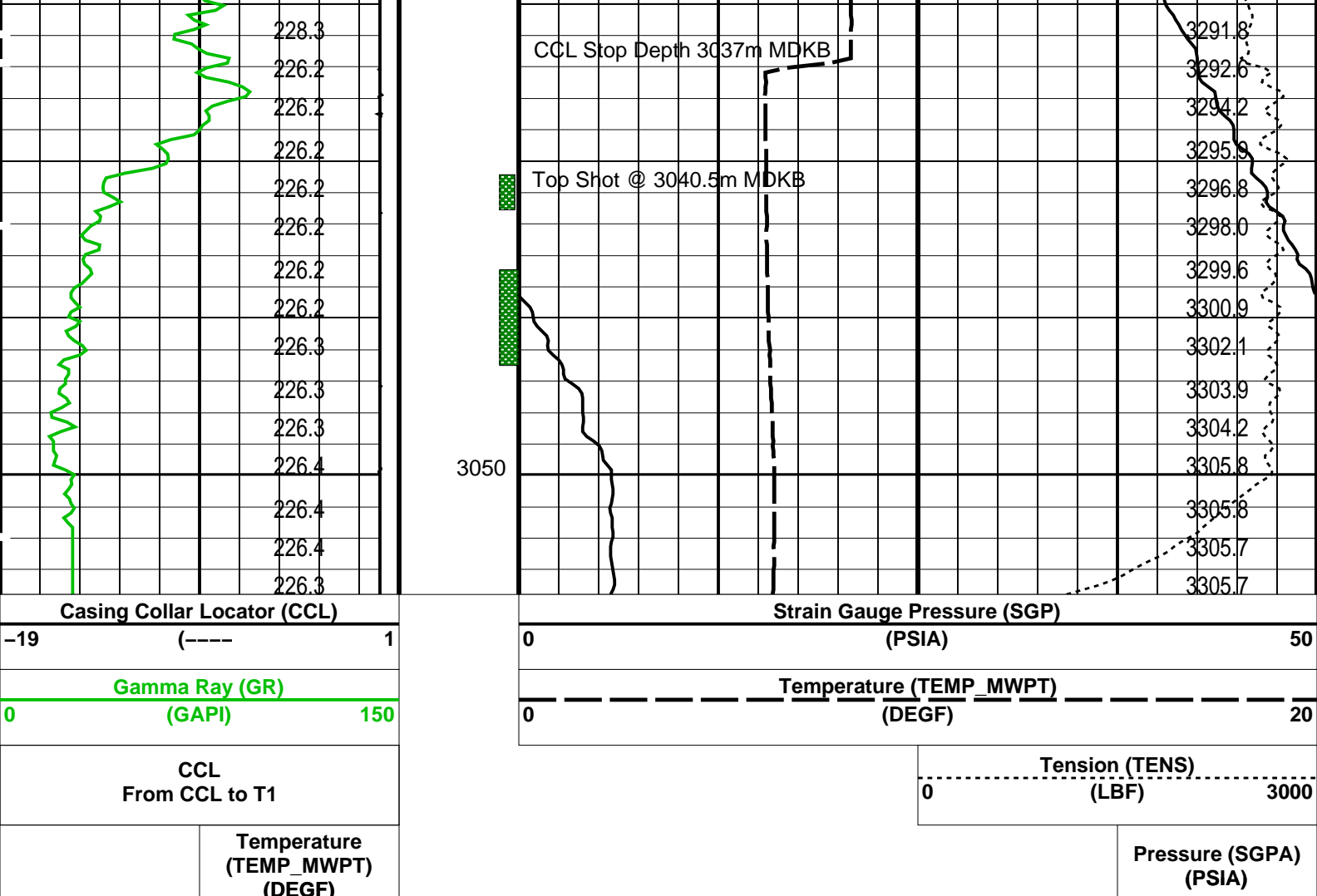
OP System Version: 14C0-302
MCM

MWP_GUN 14C0-302
MWGT-AA 14C0-302 MWPT-CA 14C0-302

PIP SUMMARY

Time Mark Every 60 S





PIP SUMMARY

Time Mark Every 60 S

Parameters

DLIS Name	Description	Value
MWPT-CA: MEASUREMENT WHILE PERFORATING TOOL		
DEVI_FL_CORR	Deviation Angle for Flow Line Correction	0 DEG
FLD	Flow Line Density	1 G/C3
MWPT_NULL_SOURCE	MWPT NULL Temperature Source	TEMS
MWPT_NULL_TEMP	MWPT NULL Temperature	0.0 DEGC

Format: MWP Vertical Scale: 1:200

Graphics File Created: 27-Aug-2006 13:17

OP System Version: 14C0-302

MCM

MWP_GUN	14C0-302	MWPT-CA	14C0-302
MWGT-AA	14C0-302		

Output DLIS Files

DEFAULT	PERFO_012LUP	FN:10	PRODUCER	27-Aug-2006 13:17
---------	--------------	-------	----------	-------------------

Schlumberger

Correlation Pass

Output DLIS Files

DEFAULT PERFO_011LUP FN:9 PRODUCER 27-Aug-2006 13:08 3081.2 M 3018.9 M

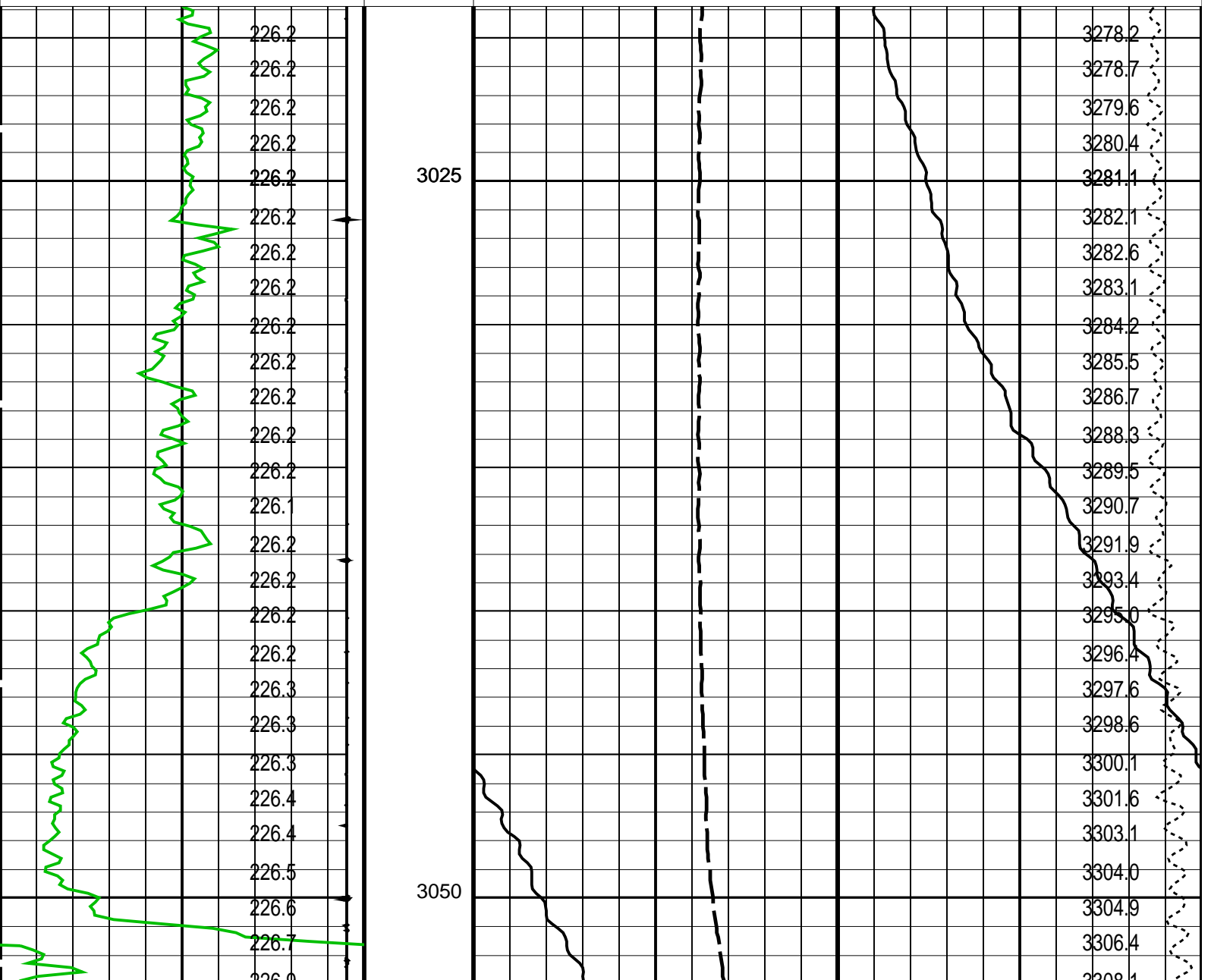
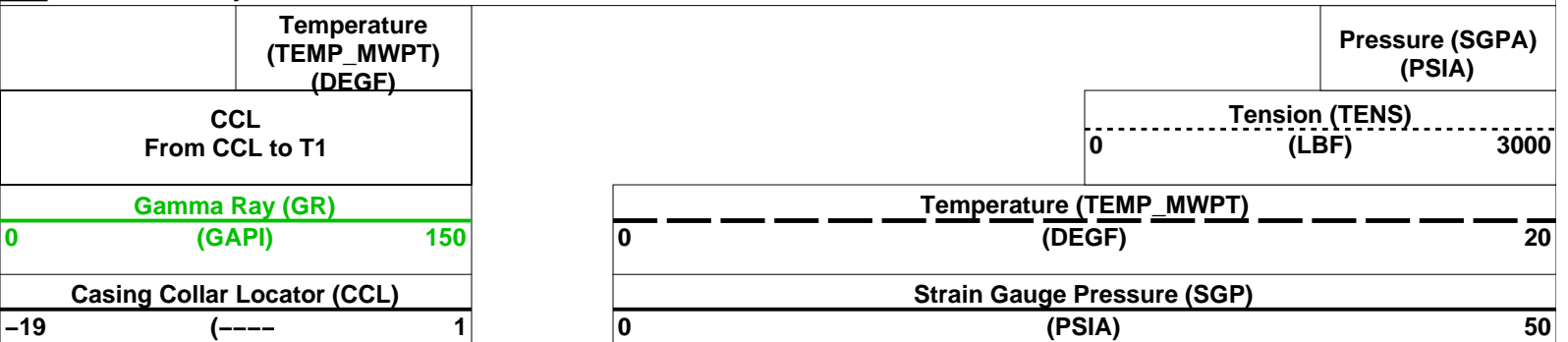
OP System Version: 14C0-302

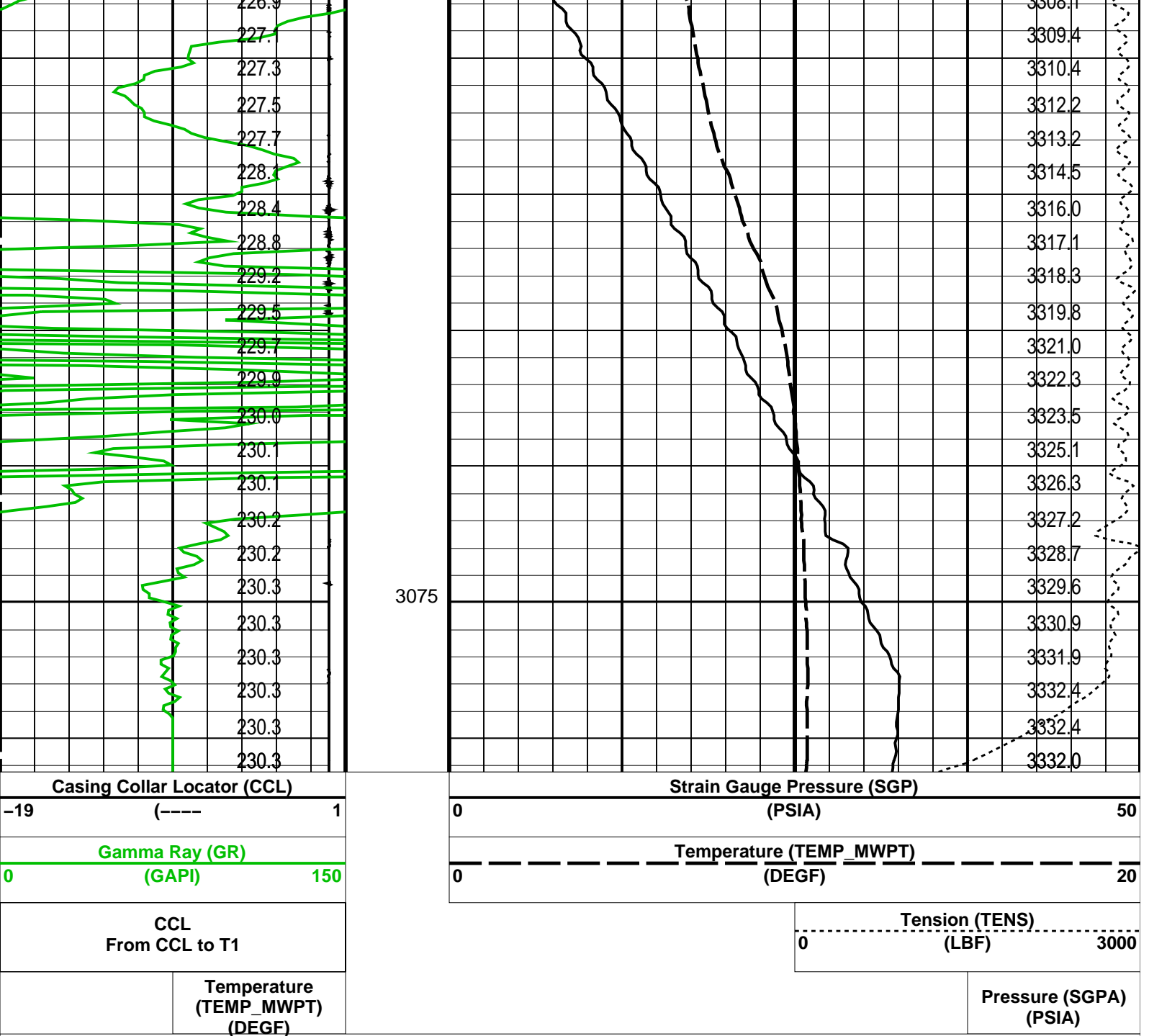
MCM

MWP_GUN 14C0-302 MWPT-CA 14C0-302
MWGT-AA 14C0-302

PIP SUMMARY

Time Mark Every 60 S





PIP SUMMARY

Time Mark Every 60 S

Parameters

DLIS Name	Description	Value
MWPT-CA: MEASUREMENT WHILE PERFORATING TOOL		
DEVI_FL_CORR	Deviation Angle for Flow Line Correction	0 DEG
FLD	Flow Line Density	1 G/C3
MWPT_NULL_SOURCE	MWPT NULL Temperature Source	TEMS
MWPT_NULL_TEMP	MWPT NULL Temperature	0.0 DEGC

Format: MWP Vertical Scale: 1:200

Graphics File Created: 27-Aug-2006 13:08

OP System Version: 14C0-302

MCM

MWP_GUN 14C0-302 MWPT-CA 14C0-302
MWGT-AA 14C0-302

Output DLIS Files

DEFAULT PERFO_011LUP FN:9 PRODUCER 27-Aug-2006 13:08

Company:

Esso Australia Ltd.

Schlumberger

Well:

A-19

Field:

Flounder

Rig :

Prod4 / Crane

Country:

Australia

MWPT 2 1/8" Powerjet
Perforating Record
MPBT 7 5/8" Posiset Plug