

Company: Esso Australia Ltd.

Well: A-2a

Field: Flounder

Rig : Prod4 / Crane

Country: Australia

MWPT 2 1/8" powerjet  
Perforating Record  
MPBT 7" Posiset Plug

Prod4 / Crane  
Flounder  
Gippsland  
A-2a  
Esso Australia Ltd.

Rig :  
Field:  
Location:  
Well:  
Company:

LOCATION

Gippsland	Elev.: K.B. 40.8 m
Basin	G.L. -94 m
Bass Strait	D.F. 40.8 m

Permanent Datum:	M.S.L.	Elev.: 0 m
Log Measured From:	D.F.	40.8 m above Perm. Datum
Drilling Measured From:	D.F.	

State: Victoria	Max. Well Deviation 44 deg	Longitude 148 26'56" E	Latitude 038 18'56"S S
-----------------	----------------------------	------------------------	------------------------

Logging Date	25-Aug-2006		
--------------	-------------	--	--

Run Number	One		
------------	-----	--	--

Depth Driller	2713 m		
---------------	--------	--	--

Schlumberger Depth	2700 m		
--------------------	--------	--	--

Bottom Log Interval	2698 m		
---------------------	--------	--	--

Top Log Interval	2650 m		
------------------	--------	--	--

Casing Fluid Type	Production Fluids		
-------------------	-------------------	--	--

Salinity			
----------	--	--	--

Density			
---------	--	--	--

Fluid Level	725 m		
-------------	-------	--	--

BIT/CASING/TUBING STRING			
--------------------------	--	--	--

Bit Size	8.500 in		
----------	----------	--	--

From	0 m		
------	-----	--	--

To	0 m		
----	-----	--	--

Casing/Tubing Size	7.000 in		
--------------------	----------	--	--

Weight	26 lbm/ft		
--------	-----------	--	--

Grade	L-80		
-------	------	--	--

From	11.8 m		
------	--------	--	--

To	2785.1 m		
----	----------	--	--

Maximum Recorded Temperatures	232 degC		
-------------------------------	----------	--	--

Logger On Bottom	25-Aug-2006	16:00	
------------------	-------------	-------	--

Unit Number	LEE001	AUSL	
-------------	--------	------	--

Recorded By	G Wright.		
-------------	-----------	--	--

Witnessed By	B Robinson.		
--------------	-------------	--	--

Run 1

Oil Density	
Water Salinity	
Gas Gravity	
Bo	
Bw	
1/Bg	
Bubble Point Pressure	
Bubble Point Temperature	
Solution GOR	
Maximum Deviation	44 deg

CEMENTING DATA

Primary/Squeeze	Primary
Casing String No	
Lead Cement Type	
Volume	
Density	
Water Loss	
Additives	
Tail Cement Type	
Volume	
Density	
Water Loss	
Additives	

Expected Cement Top

Logging Date	
--------------	--

Run Number	
------------	--

Depth Driller	
---------------	--

Schlumberger Depth	
--------------------	--

Bottom Log Interval	
---------------------	--

Top Log Interval	
------------------	--

Casing Fluid Type	
-------------------	--

Salinity	
----------	--

Density	
---------	--

Fluid Level	
-------------	--

BIT/CASING/TUBING STRING	
--------------------------	--

Bit Size	
----------	--

From	
------	--

To	
----	--

Casing/Tubing Size	
--------------------	--

Weight	
--------	--

Grade	
-------	--

From	
------	--

To	
----	--

Maximum Recorded Temperatures	
-------------------------------	--

Logger On Bottom	
------------------	--

Unit Number	
-------------	--

Recorded By	
-------------	--

Witnessed By	
--------------	--

## DEPTH SUMMARY LISTING

Date Created: 7-AUG-2006 12:52:54

### Depth System Equipment

Depth Measuring Device	Tension Device	Logging Cable
Type: IDW-H Serial Number: 797 Calibration Date: 1-May-2006 Calibrator Serial Number: 1009 Calibration Cable Type: 2-32ZT Wheel Correction 1: -3 Wheel Correction 2: -3	Type: CMTD-C Serial Number: 1037 Calibration Date: 7-Aug-2006 Calibrator Serial Number: 1174 Calibration Gain: 1.10 Calibration Offset: 325.00	Type: 2-32ZT Serial Number: 26087 Length: 6850 M Conveyance Method: Wireline Rig Type: Offshore_Mobile

### Depth Control Parameters

Log Sequence:	Subsequent Trip To the Well
Reference Log Name:	Solar Log
Reference Log Run Number:	1
Reference Log Date:	16-Sep-2003

### Depth Control Remarks

1. Correlated to Solar Log provided by client.
2. IDW used as primary depth control.
3. Z-Chart used as secondary depth control.
4.
5.
6.

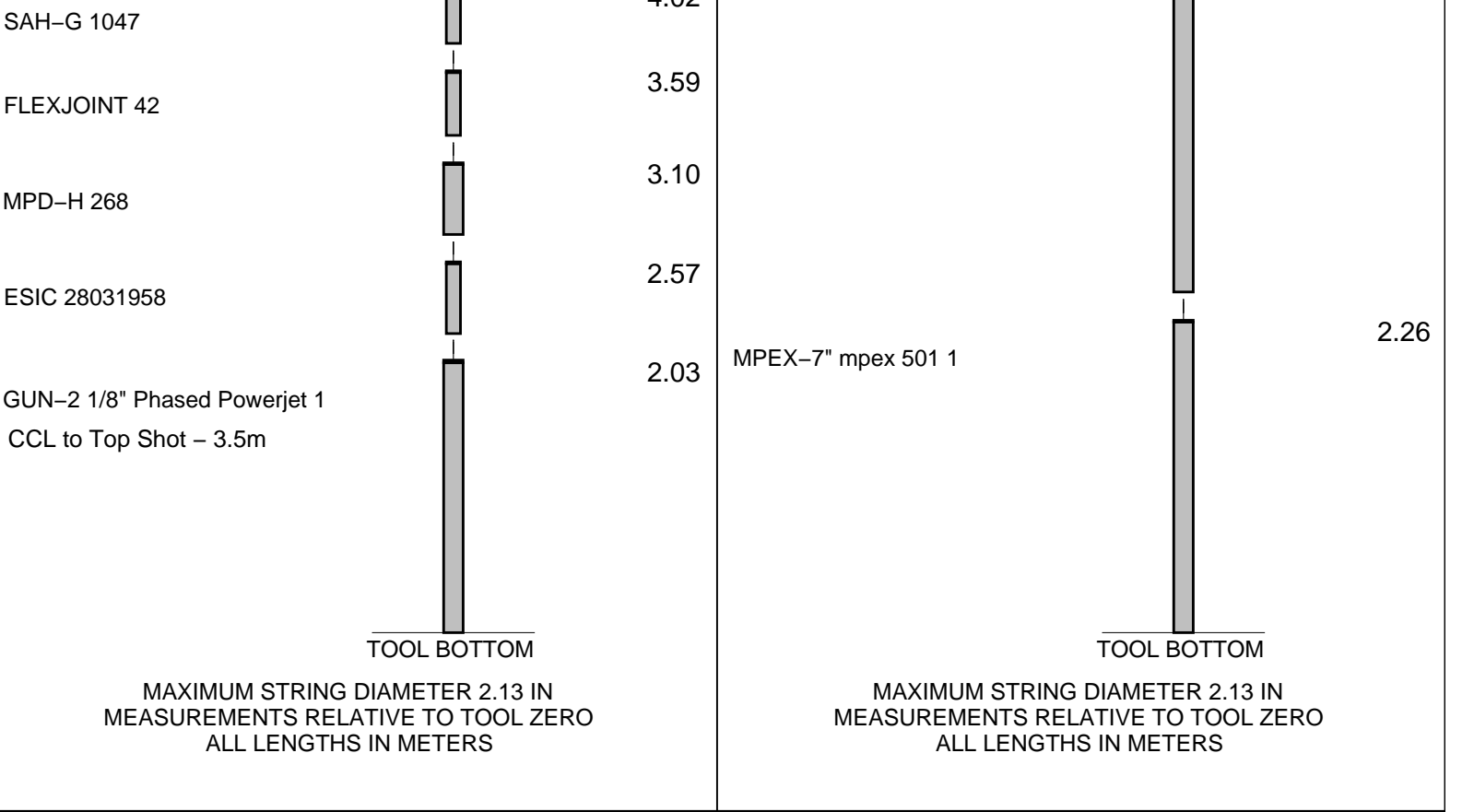
#### DISCLAIMER

THE USE OF AND RELIANCE UPON THIS RECORDED-DATA BY THE HEREIN NAMED COMPANY (AND ANY OF ITS AFFILIATES, PARTNERS, REPRESENTATIVES, AGENTS, CONSULTANTS AND EMPLOYEES) IS SUBJECT TO THE TERMS AND CONDITIONS AGREED UPON BETWEEN SCHLUMBERGER AND THE COMPANY, INCLUDING: (a) RESTRICTIONS ON USE OF THE RECORDED-DATA; (b) DISCLAIMERS AND WAIVERS OF WARRANTIES AND REPRESENTATIONS REGARDING COMPANY'S USE OF AND RELIANCE UPON THE RECORDED-DATA; AND (c) CUSTOMER'S FULL AND SOLE RESPONSIBILITY FOR ANY INFERENCE DRAWN OR DECISION MADE IN CONNECTION WITH THE USE OF THIS RECORDED-DATA.

OTHER SERVICES1 OS1: None
------------------------------

REMARKS: RUN NUMBER 1
Log correlated to ExxonMobil Solar correlation composite log dated 16-Sep-2003.
Maximum well deviation = 44 degrees at 2445m MDKB.
Objectives: Perforate Well at 2697m MDKB to 2698m MDKB ,
Set MPBT @ 2700mMDKB , then dump 1m of Cement on top of the Plug .
SBHP: 3215psia SBHT: 232degf





Client: Esso Australia Ltd

Well: FLA\_A2a

Field: Bass Strait

State: Victoria

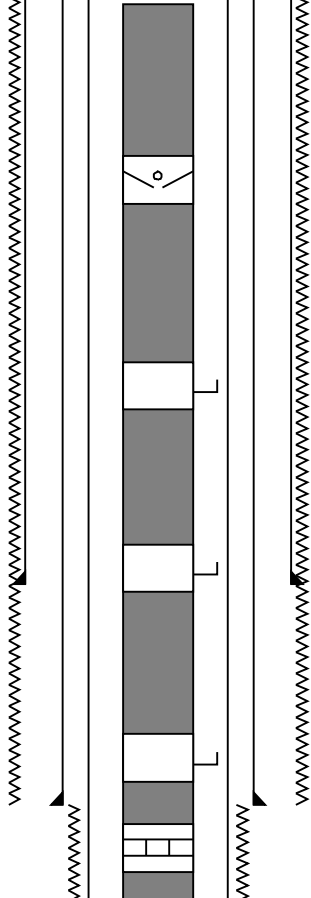
Country: Australia

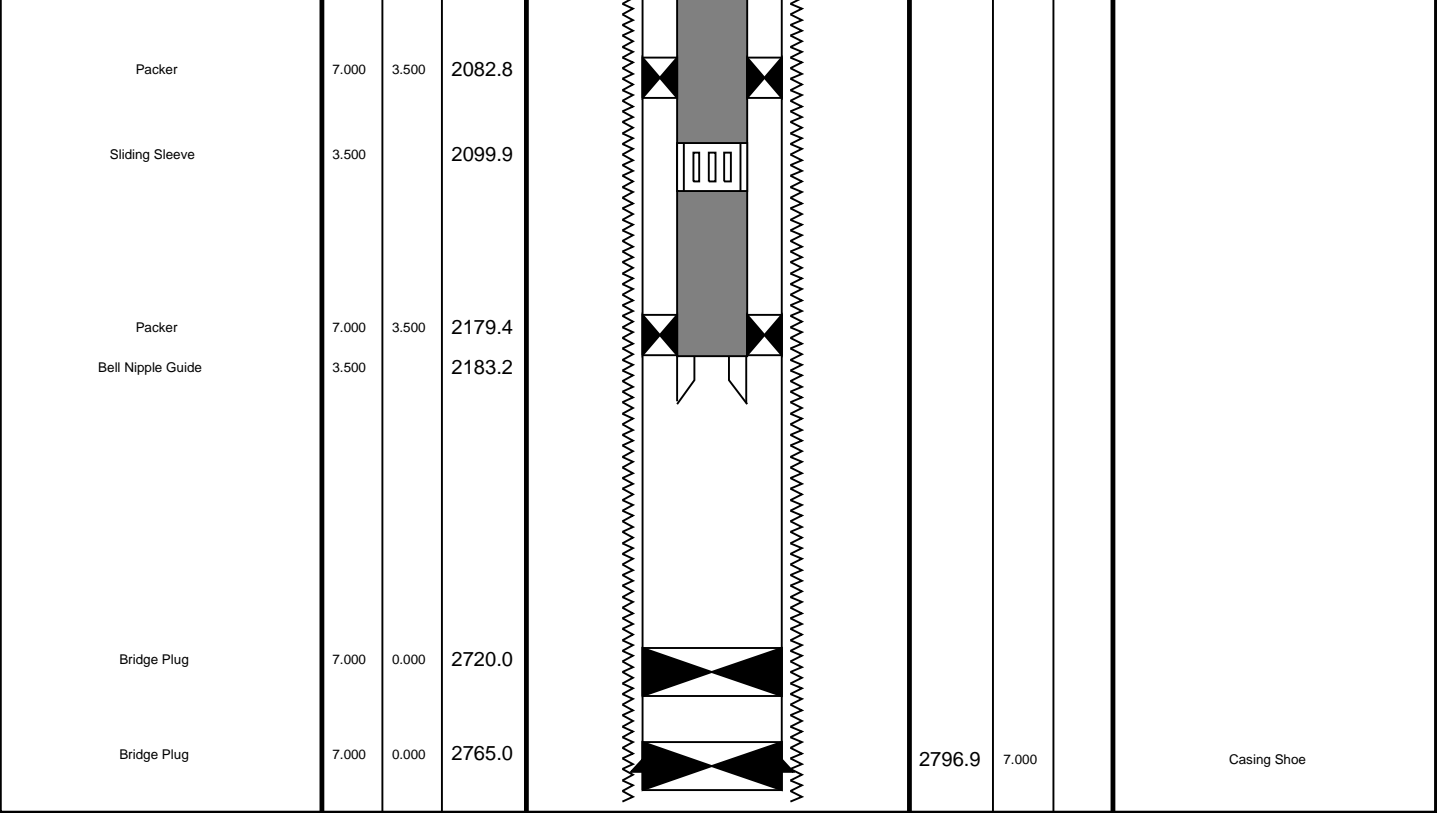
Rig Name: Flounder

Reference Datum: Mean Sea Level

Elevation: 33 m

Drawing Date: 2/11/2006

Production String	(in)		(m)	Well Schematic	(m)	(in)		Casing String
	OD	ID	MD		MD	OD	ID	
Tubing	3.500		11.8		0.0	14.500		Borehole Segment
Sub Surface Safety Valve	3.500		443.1					
Gas Lift Mandrel	3.500		789.9					
Gas Lift Mandrel	3.500		1284.8		981.5	13.375		Casing Shoe
Gas Lift Mandrel	3.500		1487.6		1350.0	14.500		Casing Shoe
Nipple	3.500		1601.2		1350.0	8.500 9.625		Borehole Segment Borehole Segment Bottom



All depths are drillers  
depths



Job Events Summary

MAXIS Field Log

Schlumberger Job Event Summary

	Time	Elapsed Time	Depth (M)	File
Log Pass (down)	26-Aug-2006 6:54	000:08	1853.5 – 2713.0	PSP_020LDP
Log Pass (up)	26-Aug-2006 7:02	000:12	2712.4 – 2082.4	PSP_021LUP
Log Pass (up)	26-Aug-2006 7:14	000:16	2066.8 – –10.2	PSP_022LUP
Log Pass (down)	26-Aug-2006 8:33	000:29	5.5 – 2543.9	MPBT_026LDP
Simulated Log	26-Aug-2006 9:03	000:08		MPBT_027LDP
Simulated Log	26-Aug-2006 9:13	000:23		MPBT_029LUP
Log Pass (up)	26-Aug-2006 9:39	000:32	2678.4 – 842.9	MPBT_031LUP
Log Pass (down)	26-Aug-2006 11:24	000:25	–12.8 – 2600.4	PERFO_033LDP
Log Pass (up)	26-Aug-2006 11:52	000:04	2688.0 – 2595.7	PERFO_034LUP



Cement Dump Bailer

MAXIS Field Log

Output DLIS Files

DEFAULTPERFO\_038LUPFN:37PRODUCER26-Aug-2006 13:522688.3 M2621.6 M

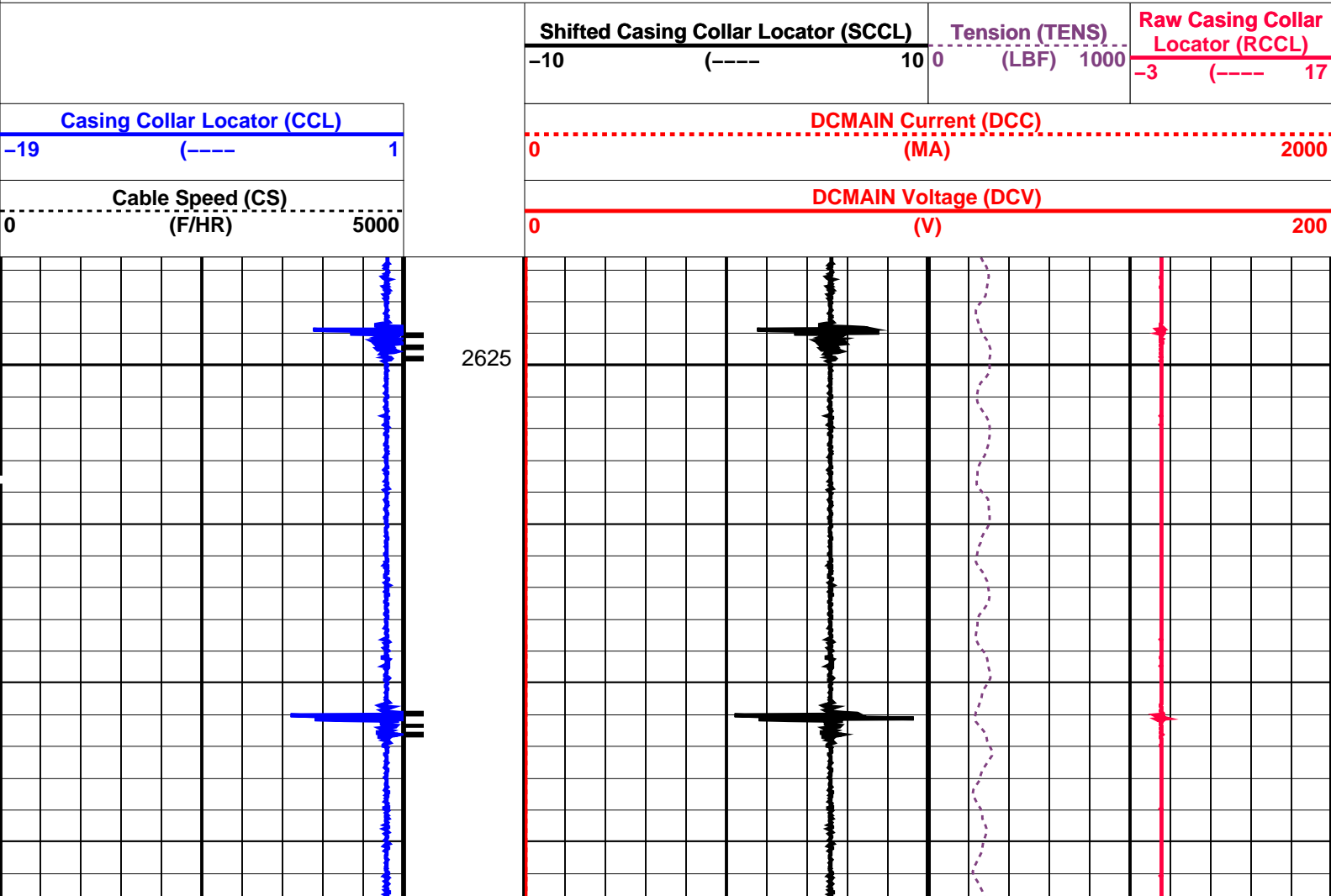
OP System Version: 14C0-302  
MCM

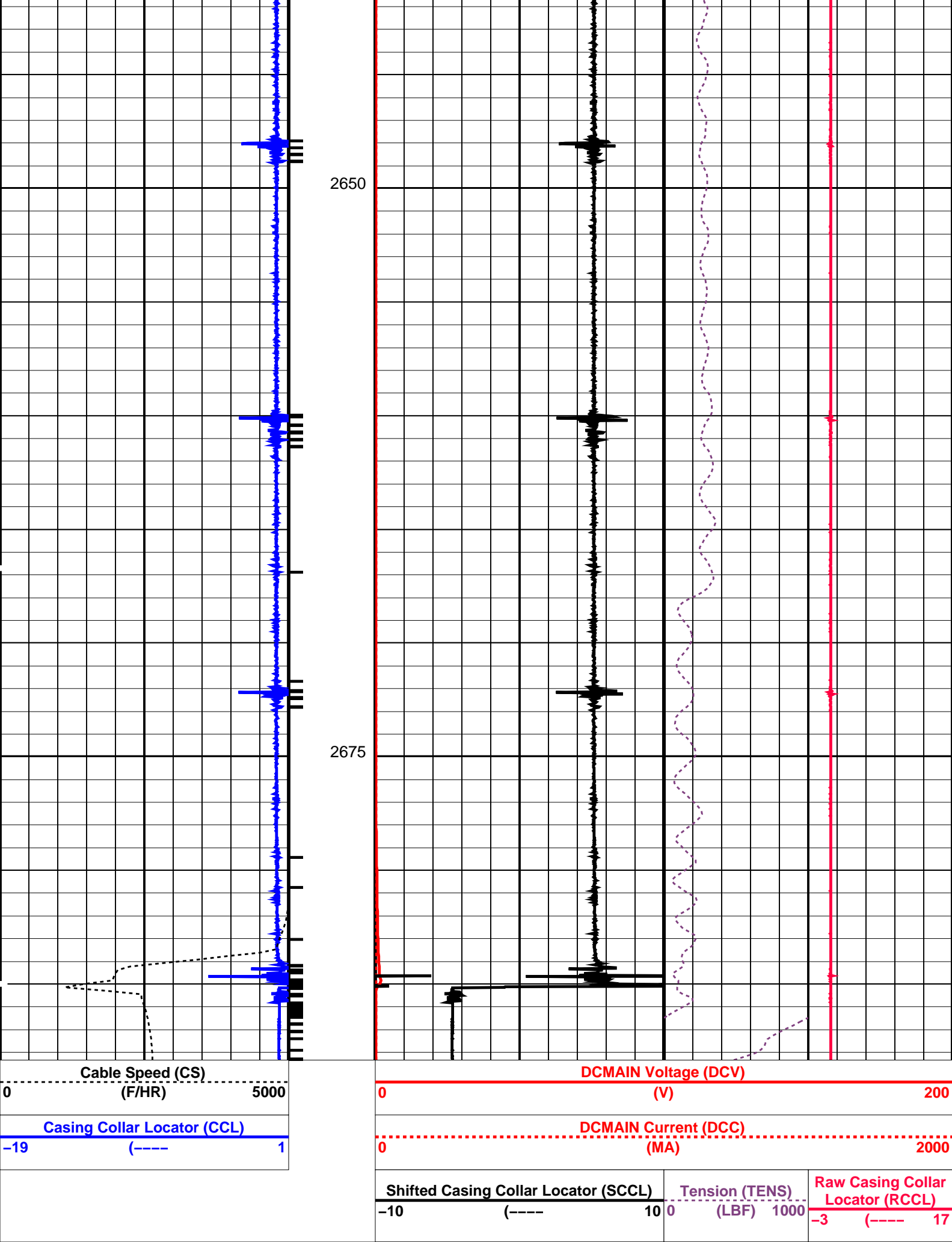
SHM\_GUN14C0-302CCL-L14C0-302

PIP SUMMARY

Casing Collars

Time Mark Every 60 S





## Parameters

DLIS Name	Description	Value
CCLD	CCL-L: Casing Collar Locator	
CCLT	CCL reset delay	12 IN
	CCL Detection Level	0.3 V

Format: PERFO      Vertical Scale: 1:200      Graphics File Created: 26-Aug-2006 13:52

**OP System Version: 14C0-302**

## MCM

SHM_GUN	14C0-302	CCL-L	14C0-302
---------	----------	-------	----------

## Output DLIS Files

DEFAULT	PERFO_038LUP	FN:37	PRODUCER	26-Aug-2006 13:52
---------	--------------	-------	----------	-------------------



# Water Dump Bailer

MAXIS Field Log

## Output DLIS Files

DEFAULT	PERFO_034LUP	FN:33	PRODUCER	26-Aug-2006 11:52
---------	--------------	-------	----------	-------------------

**OP System Version: 14C0-302**

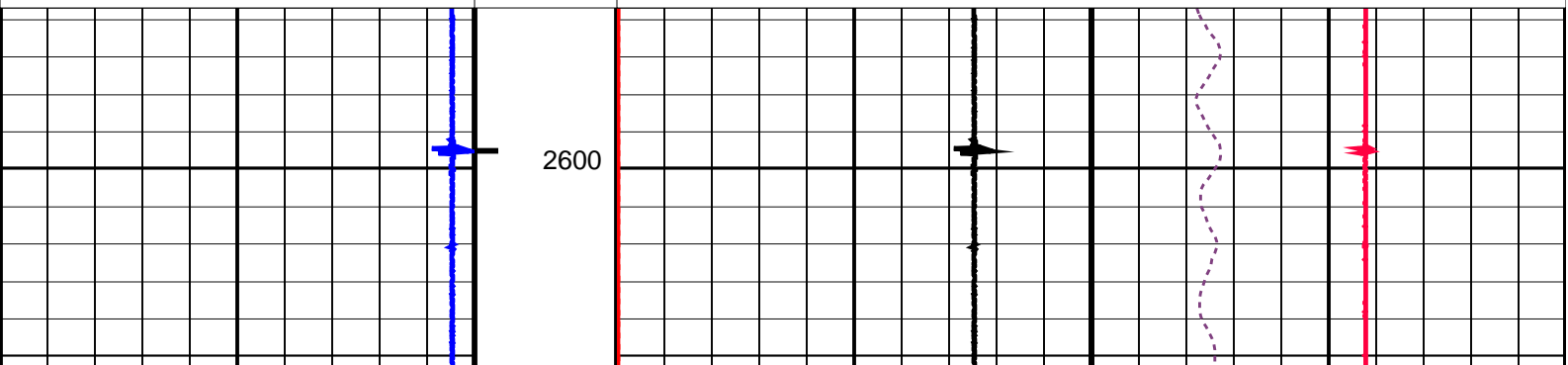
## MCM

SHM_GUN	14C0-302	CCL-L	14C0-302
---------	----------	-------	----------

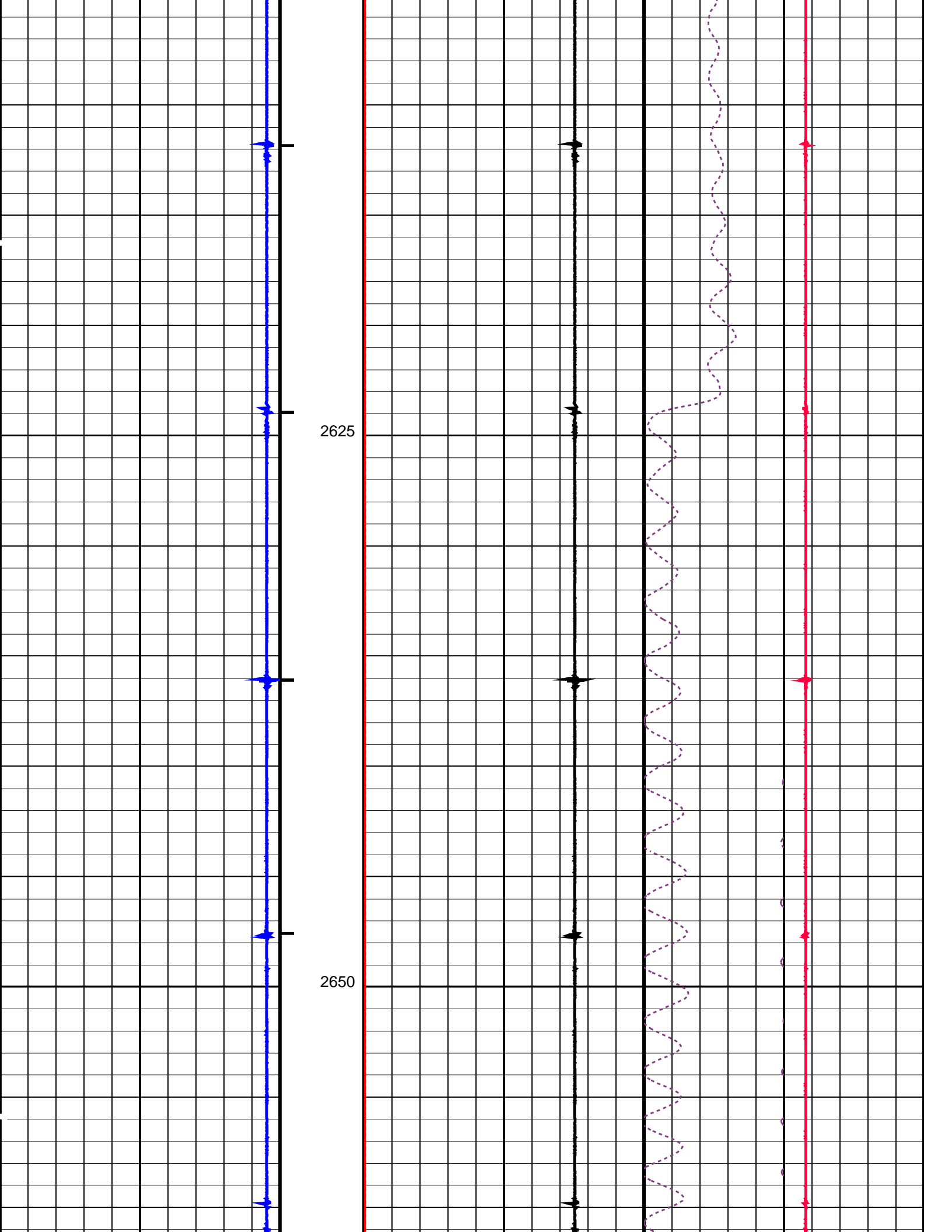
## PIP SUMMARY

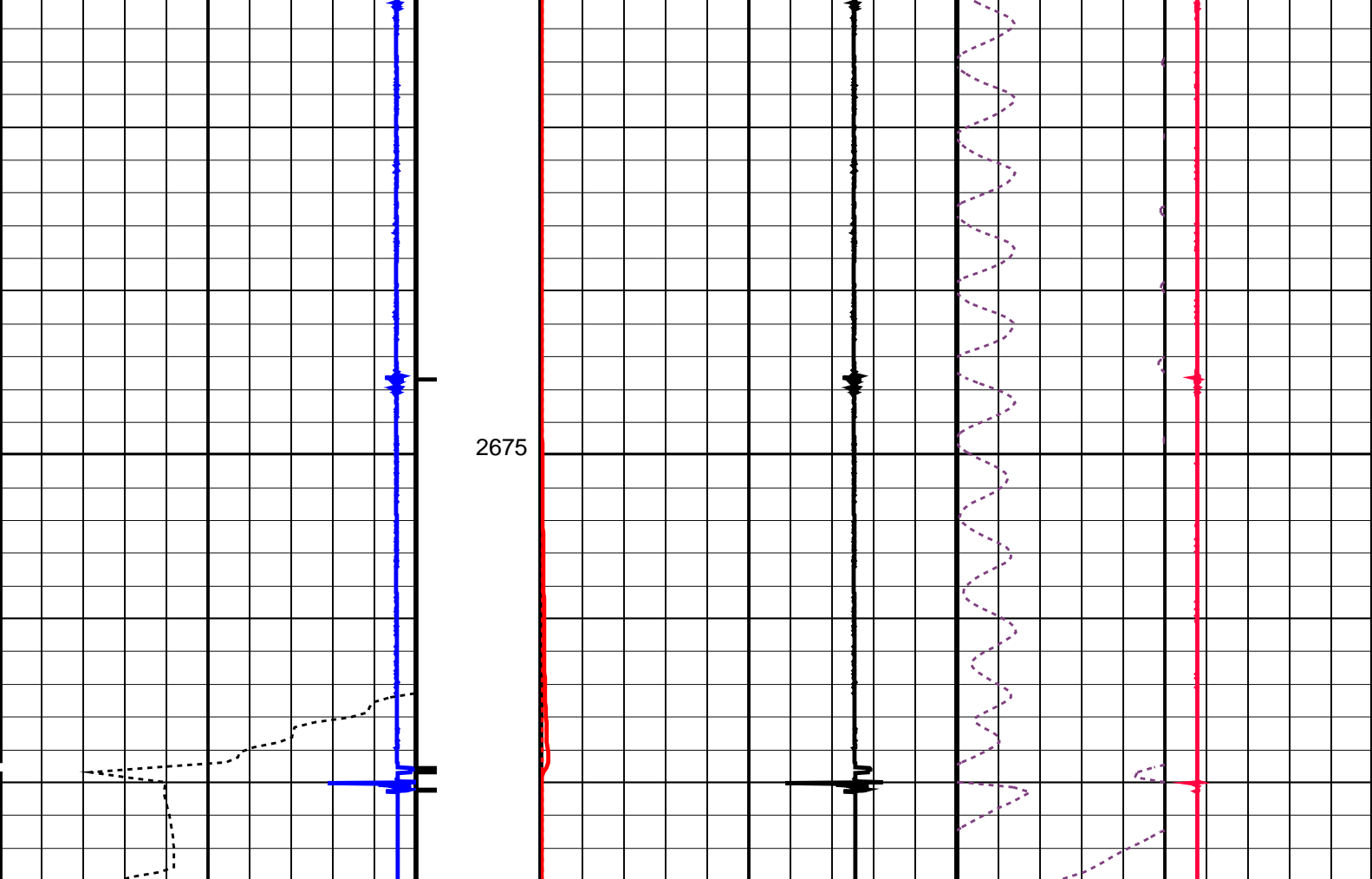
	Shifted Casing Collar Locator (SCCL)	Tension (TENS) ----- (LBF)      1000	Raw Casing Collar Locator (RCCL)
-10	(---- 10	0	-3 (---- 17

Casing Collar Locator (CCL)		
-19	(----	1
Cable Speed (CS)		
0	(F/HR)	5000









Cable Speed (CS) (F/HR)		DCMAIN Voltage (DCV) (V)	
0 5000		0 200	
Casing Collar Locator (CCL) (----		DCMAIN Current (DCC) (MA)	
-19 1		0 2000	
Shifted Casing Collar Locator (SCCL) (----		Tension (TENS) (LBF)	Raw Casing Collar Locator (RCCL)
-10 10		0 1000	-3 17

PIP SUMMARY

Time Mark Every 60 S

Casing Collars

Parameters		
DLIS Name	Description	Value
CCL-L	Casing Collar Locator	
CCLD	CCL reset delay	12 IN
CCLT	CCL Detection Level	0.3 V

Format: PERFO Vertical Scale: 1:200 Graphics File Created: 26-Aug-2006 11:52

OP System Version: 14C0-302			
MCM			
SHM_GUN	14C0-302	CCL-L	14C0-302

Output DLIS Files			
DEFAULT	PERFO_034LUP	FN:33 PRODUCER	26-Aug-2006 11:52

Setting The Plug

## Output DLIS Files

DEFAULT MPBT\_029LUP FN:28 PRODUCER 26-Aug-2006 09:13

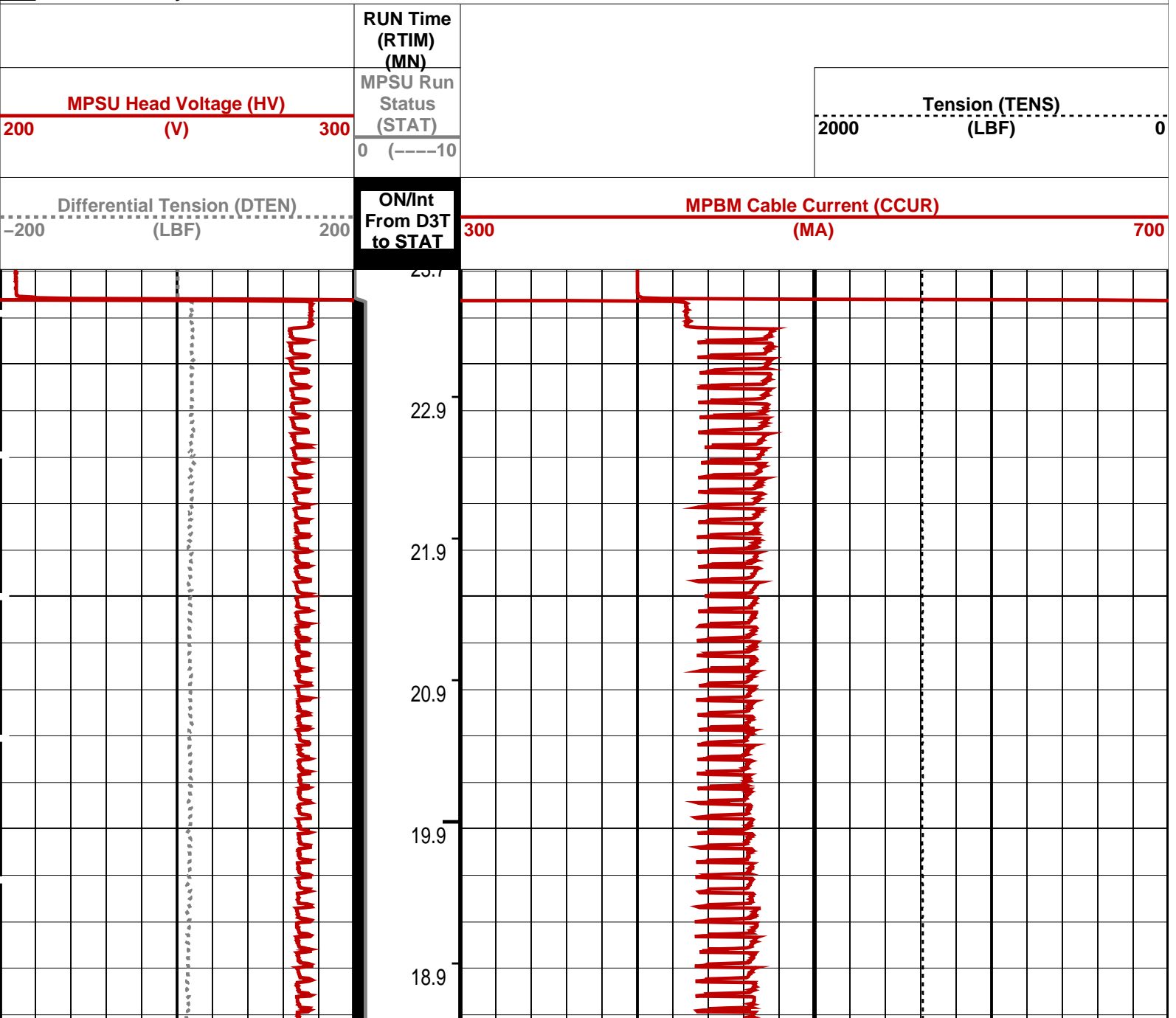
## OP System Version: 14C0-302 MCM

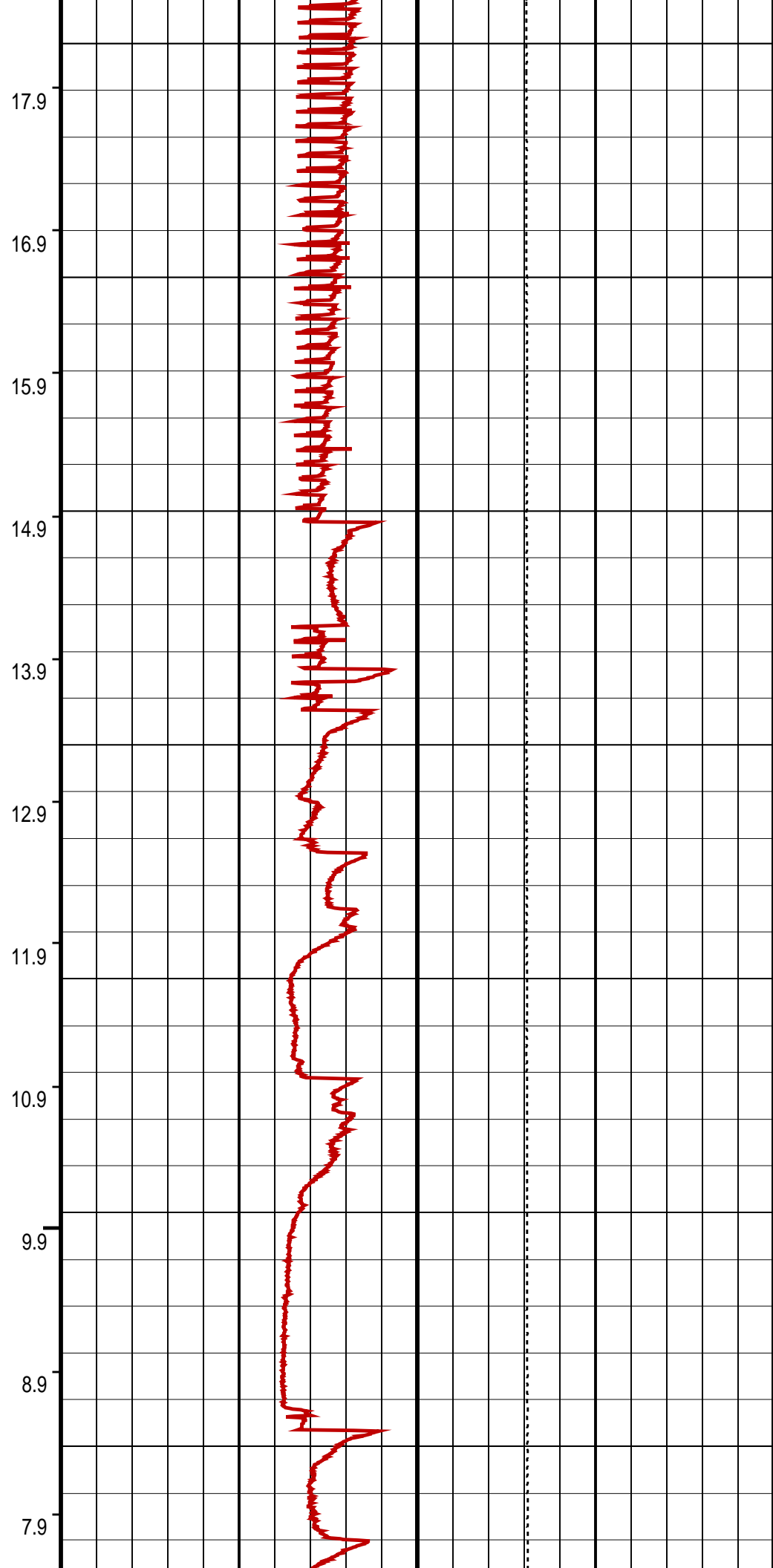
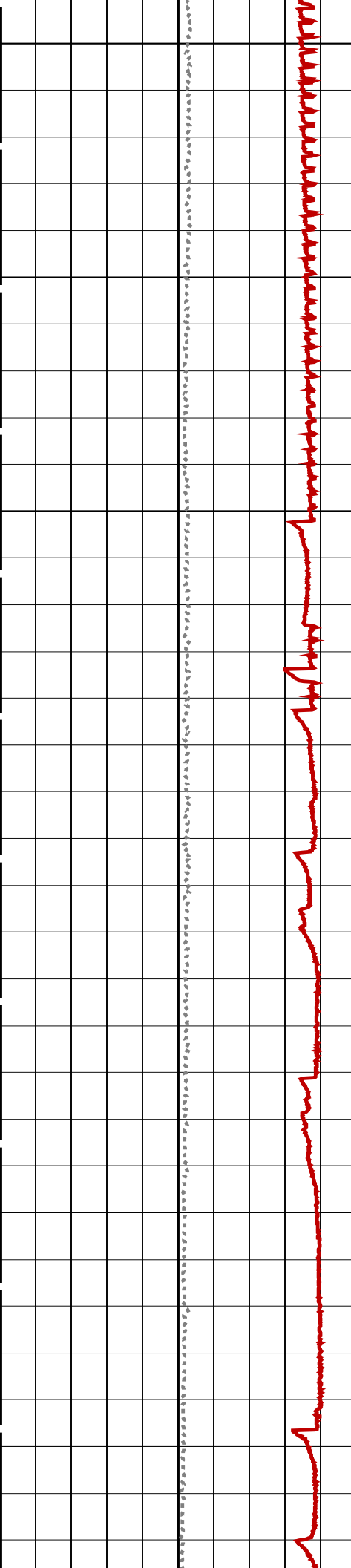
MPEX-7" mpex MPSU-CA 14C0-302  
CCL-L 14C0-302

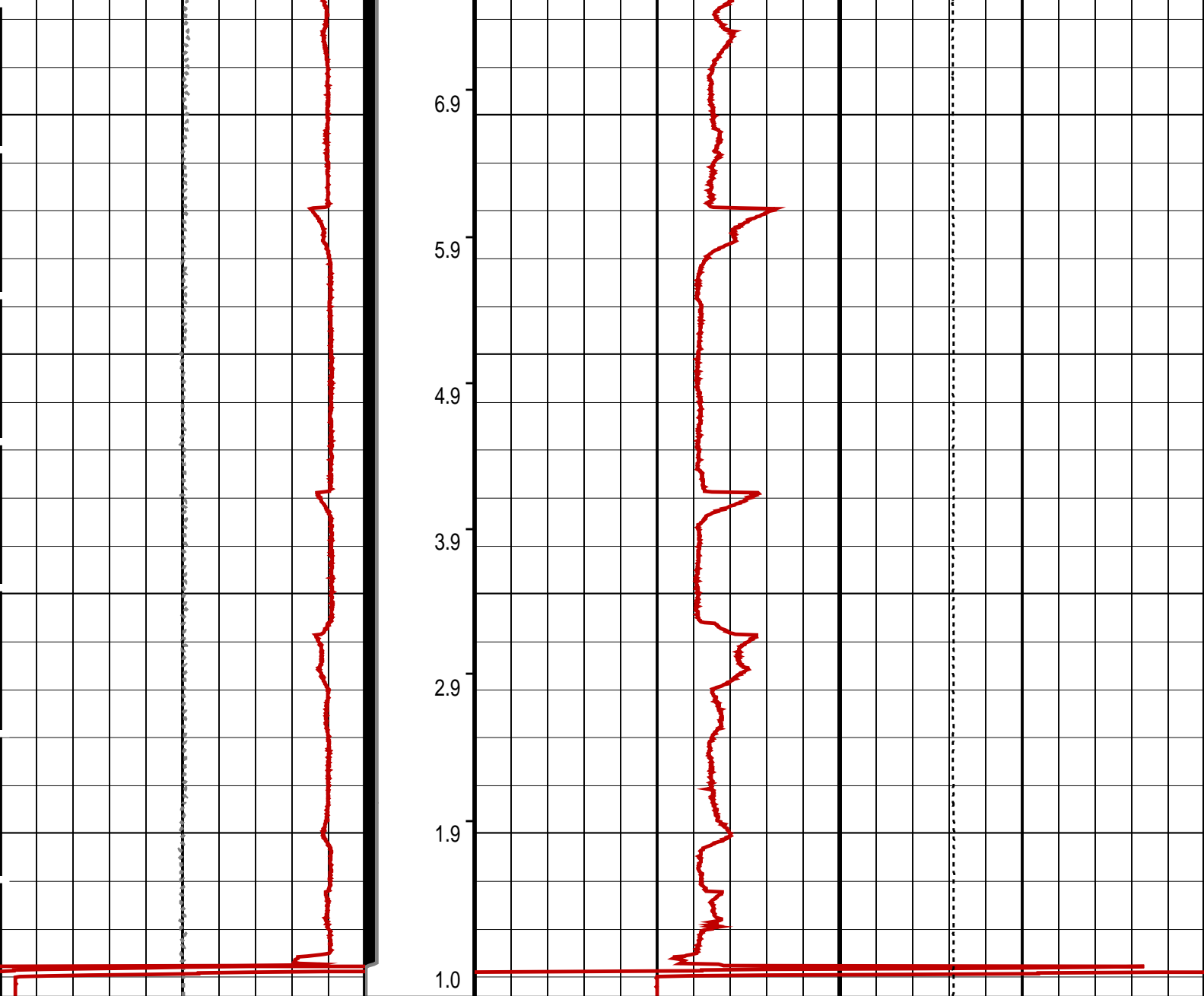
### PIP SUMMARY

→ MPSU Run Time Every 1 MN  
→ MPSU Run Time Every 10 MN

Time Mark Every 60 S







Differential Tension (DTEN) (LBF)	ON/Int From D3T to STAT	MPBM Cable Current (CCUR) (MA)
-200 200	300 700	2000 0
MPSU Head Voltage (HV) (V)	MPSU Run Status (STAT)	Tension (TENS) (LBF)
200 300	0 (----10	
	RUN Time (RTIM) (MN)	

PIP SUMMARY

- ┆ MPSU Run Time Every 1 MN
- ┆ MPSU Run Time Every 10 MN

Time Mark Every 60 S

Parameters		
DLIS Name	Description	Value
IPUMP	MPSU-CA: MECHANICAL PLUGBACK SETTING UNIT Intensifier Pump	TRUE

MPEX-7"	mpex	MPSU-CA	14C0-302
CCL-L	14C0-302		

## Output DLIS Files

DEFAULT	MPBT_029LUP	FN:28	PRODUCER	26-Aug-2006 09:13
---------	-------------	-------	----------	-------------------



## Dummy Plug PSP Correlation

MAXIS Field Log

Company: Esso Australia Ltd.	Well: A-2a
------------------------------	------------

## Input DLIS Files

DEFAULT	PSP_021LUP	FN:20	PRODUCER	26-Aug-2006 07:02	2712.4 M	2082.4 M
---------	------------	-------	----------	-------------------	----------	----------

## Output DLIS Files

DEFAULT	PSP 042PUP	FN:41	PRODUCER	26-Aug-2006 14:41	2712.4 M	2640.3 M
---------	------------	-------	----------	-------------------	----------	----------

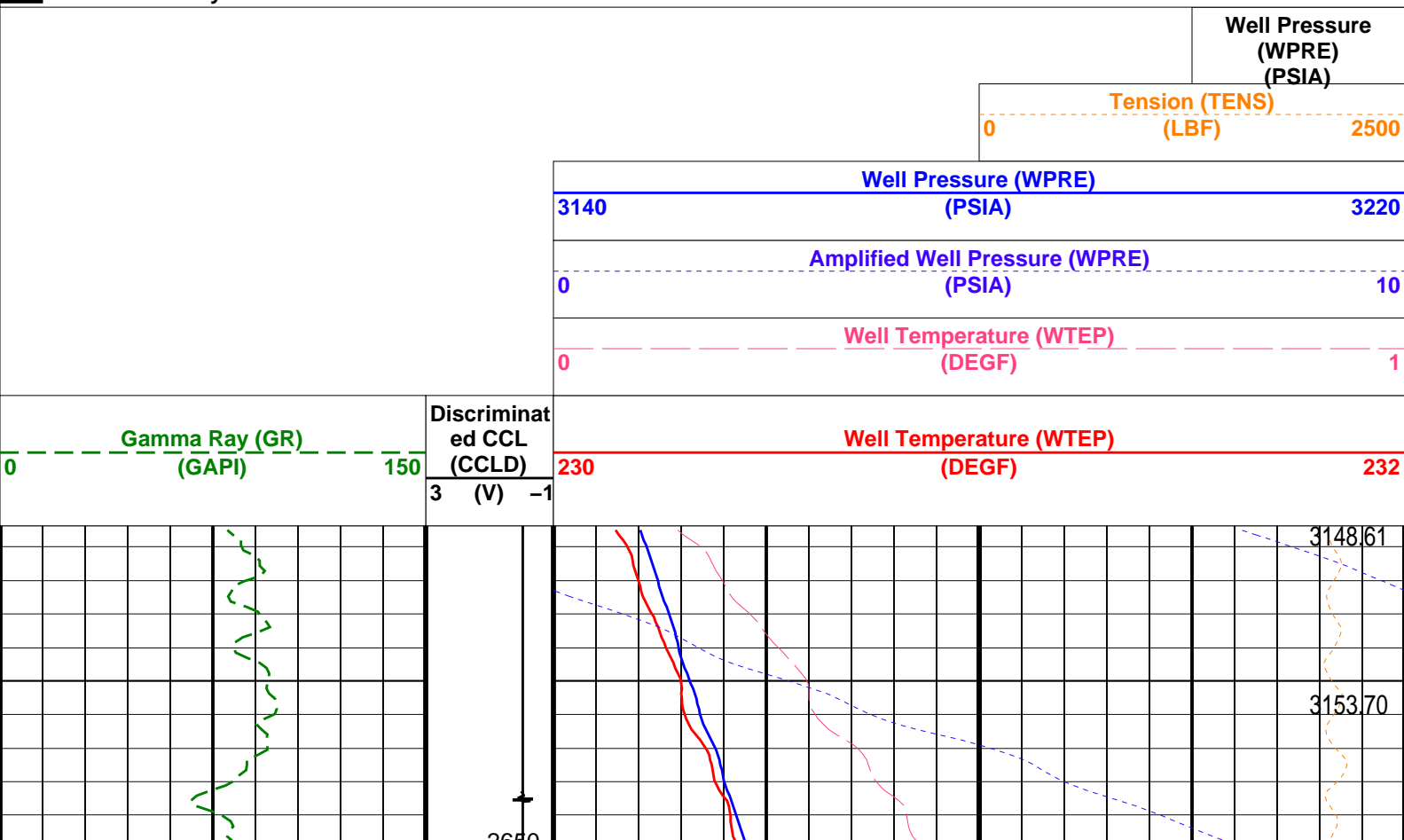
**OP System Version: 14C0-302**

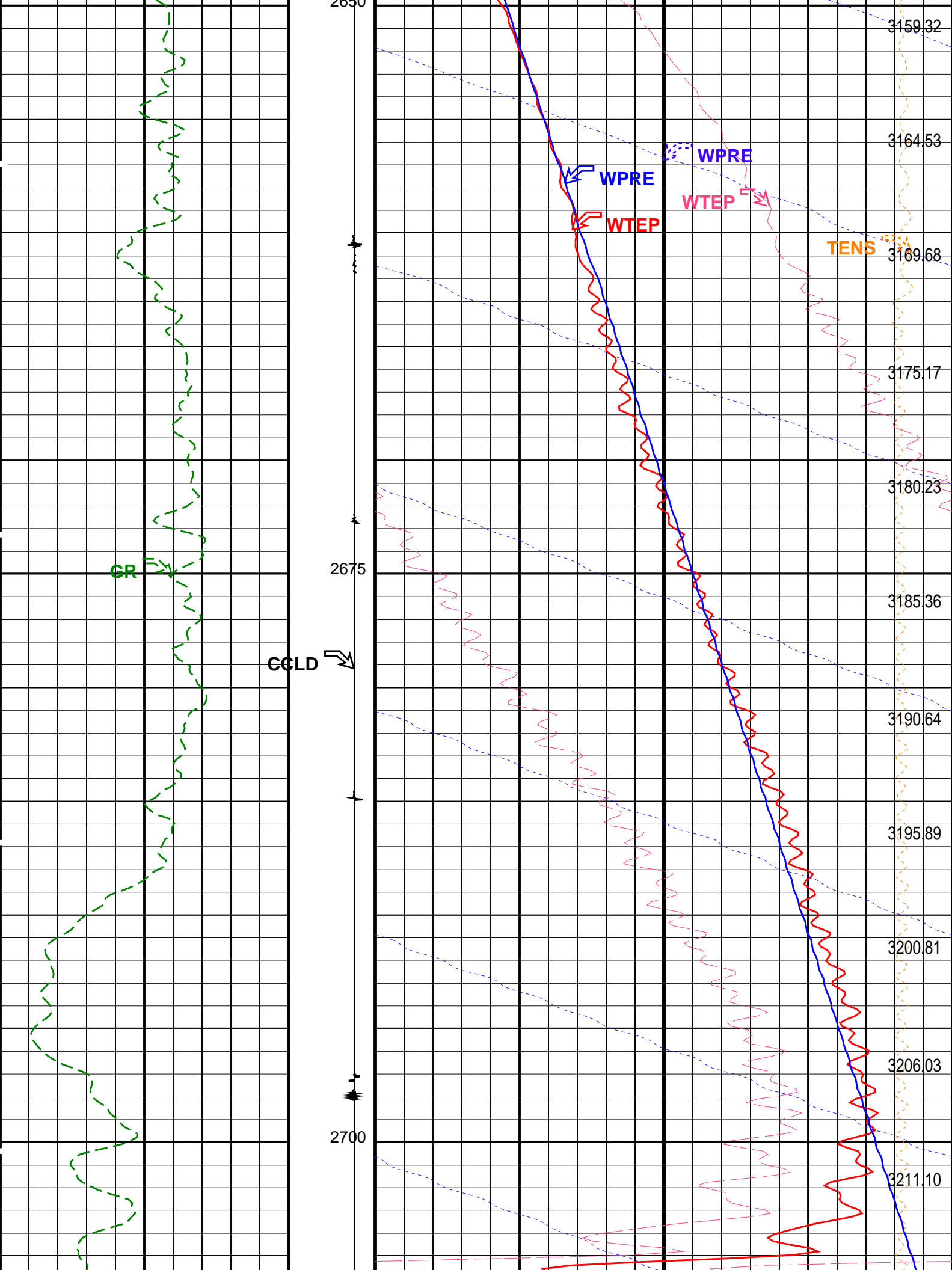
## MCM

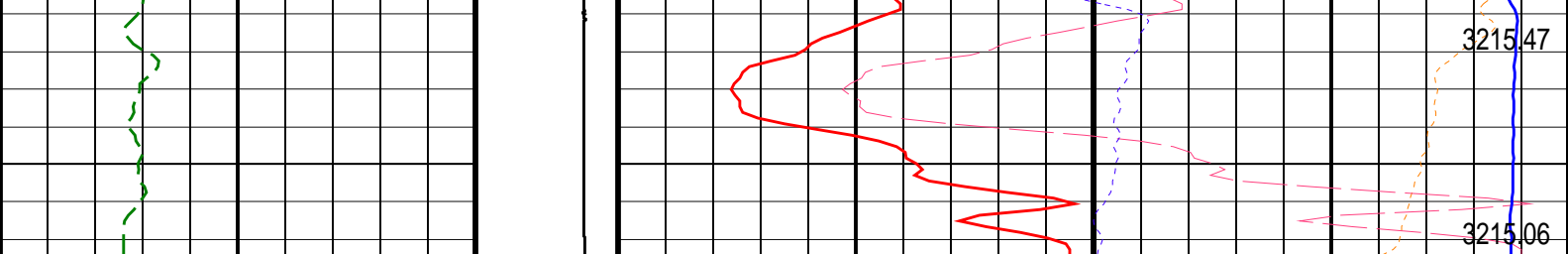
PSPT-A/B 14C0-302

## PIP SUMMARY

**Time Mark Every 60 S**







Gamma Ray (GR) (GAPI)		Discriminat ed CCL (CCLD)	Well Temperature (WTEP) (DEGF)	
0	150	3 (V) -1	230	232

Well Temperature (WTEP) (DEGF)	
0	1
Amplified Well Pressure (WPRE) (PSIA)	
0	10
Well Pressure (WPRE) (PSIA)	
3140	3220

Tension (TENS) (LBF)	
0	2500

Well Pressure (WPRE) (PSIA)
-----------------------------------

PIP SUMMARY

Time Mark Every 60 S


Format: PSP\_1 Vertical Scale: 1:200 Graphics File Created: 26-Aug-2006 14:41

OP System Version: 14C0-302  
MCM  
PSPT-A/B 14C0-302

Parameters		
DLIS Name	Description	Value
DO PP	System and Miscellaneous Depth Offset for Playback Playback Processing	0.0 M NORMAL

Input DLIS Files					
DEFAULT	PSP_021LUP	FN:20	PRODUCER	26-Aug-2006 07:02	2712.4 M 2082.4 M

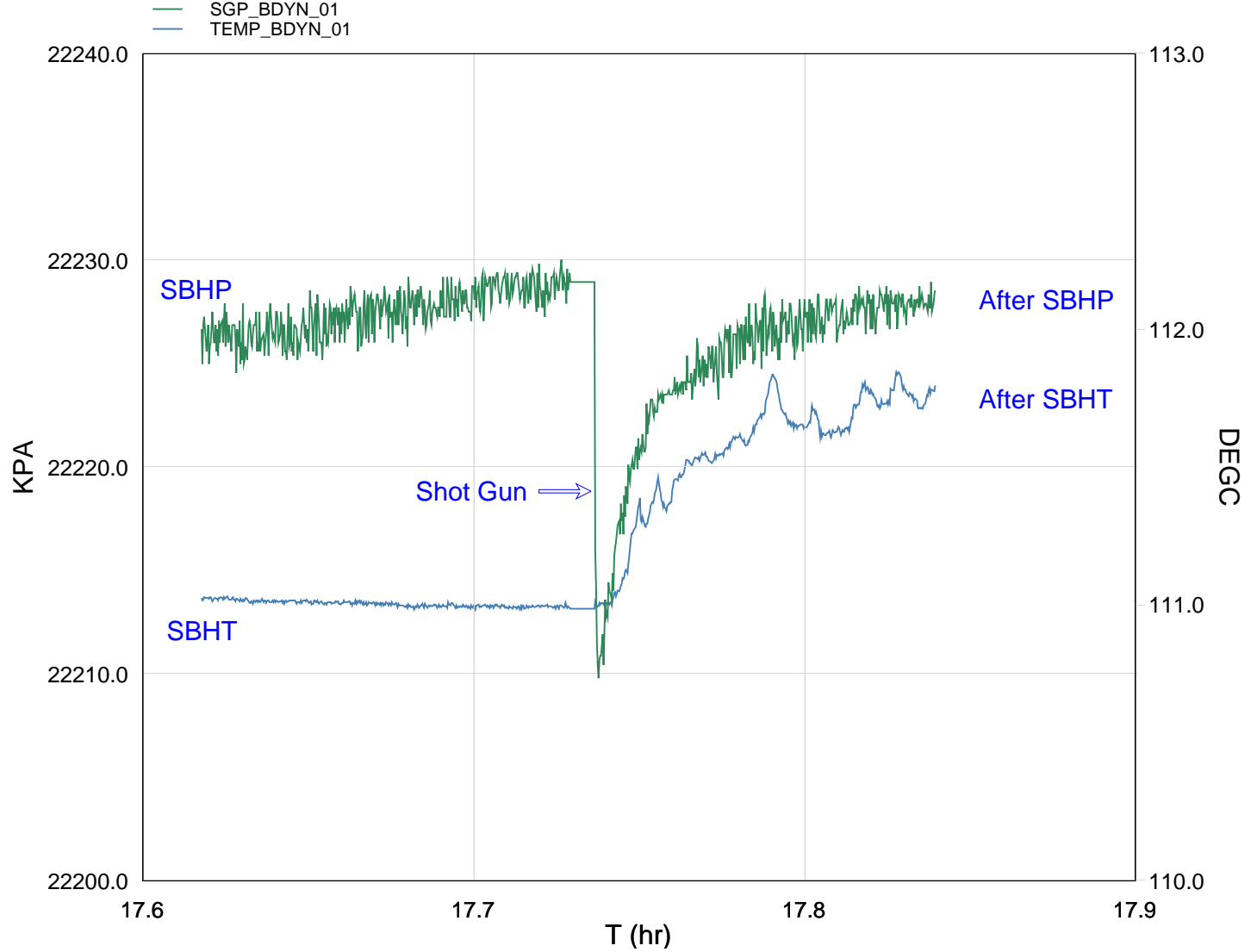
Output DLIS Files					
DEFAULT	PSP_042PUP	FN:41	PRODUCER	26-Aug-2006 14:41	



Gun # 1  
2697m to 2698m MDKB

MAXIS Field Log





TIME	DEGF	PSIA
2820.0	233.20	3223.889
2760.0	232.94	3223.634
2700.0	233.08	3223.605
2640.0	232.83	3223.644
2580.0	232.48	3223.256
2520.0	231.86	3222.222
2460.0	231.80	3224.192
2400.0	231.78	3224.002
2340.0	231.80	3223.812
2280.0	231.81	3223.752
2220.0	231.80	3223.814
2160.0	231.82	3223.575
2100.0	231.84	3223.618
2040.0	231.79	3223.828

Output DLIS Files

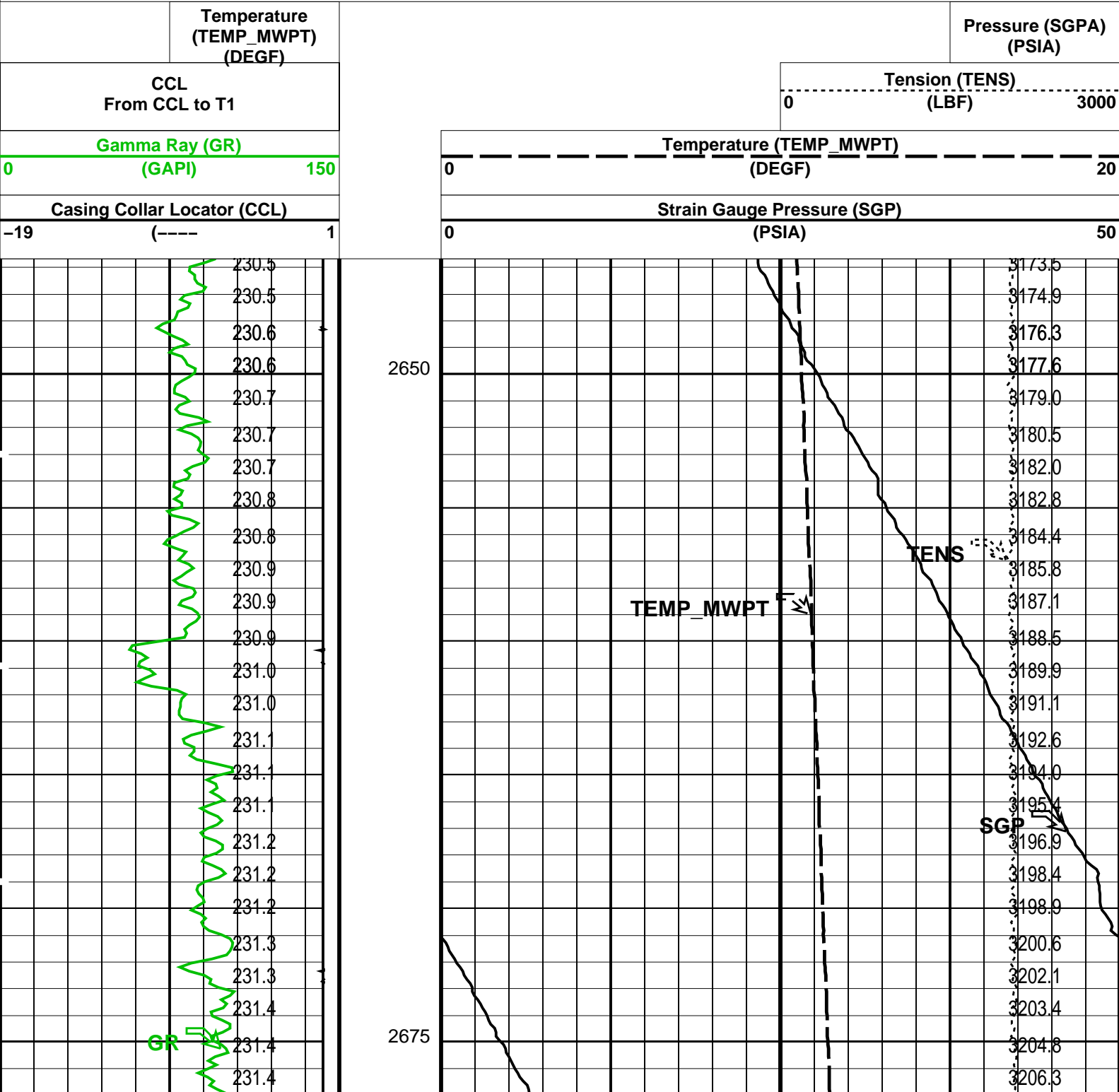
DEFAULT PERFO\_015LUP FN:14 PRODUCER 25-Aug-2006 17:34 2707.1 M 2645.7 M

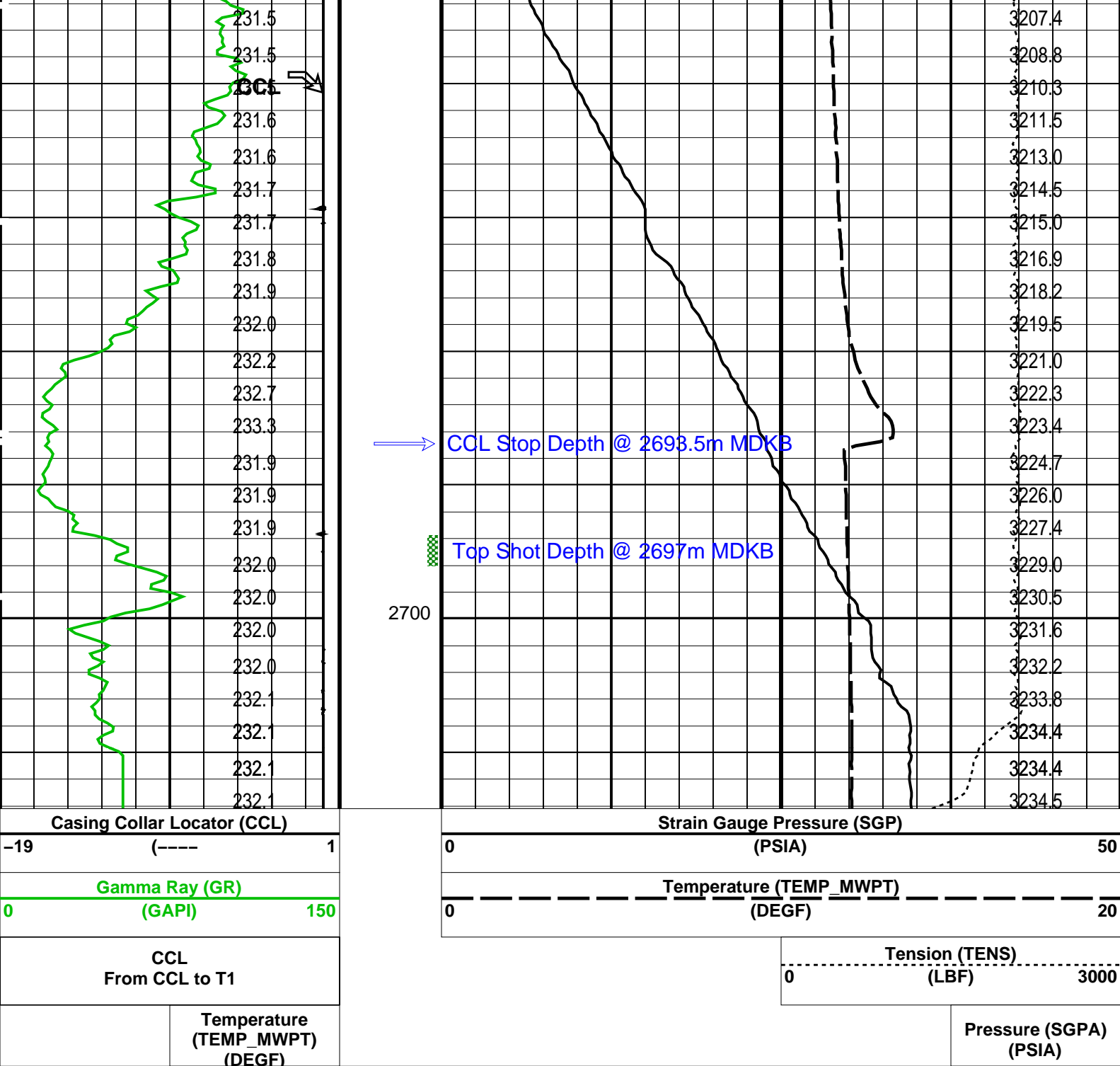
OP System Version: 14C0-302  
MCM

MWP\_GUN 14C0-302 MWPT-CA 14C0-302  
MWGT-AA 14C0-302

PIP SUMMARY

Time Mark Every 60 S





PIP SUMMARY			
Time Mark Every 60 S			
Parameters			
DLIS Name	Description	Value	
MWPT-CA: MEASUREMENT WHILE PERFORATING TOOL			
DEVI_FL_CORR	Deviation Angle for Flow Line Correction	0	DEG
FLD	Flow Line Density	1	G/C3
MWPT_NULL_SOURCE	MWPT NULL Temperature Source	TEMS	
MWPT_NULL_TEMP	MWPT NULL Temperature	0.0	DEGC
Format: MWP Vertical Scale: 1:200		Graphics File Created: 25-Aug-2006 17:34	
OP System Version: 14C0-302			
MCM			
MWP_GUN	14C0-302	MWPT-CA	14C0-302
MWGT-AA	14C0-302		

Output DLIS Files			
-------------------	--	--	--



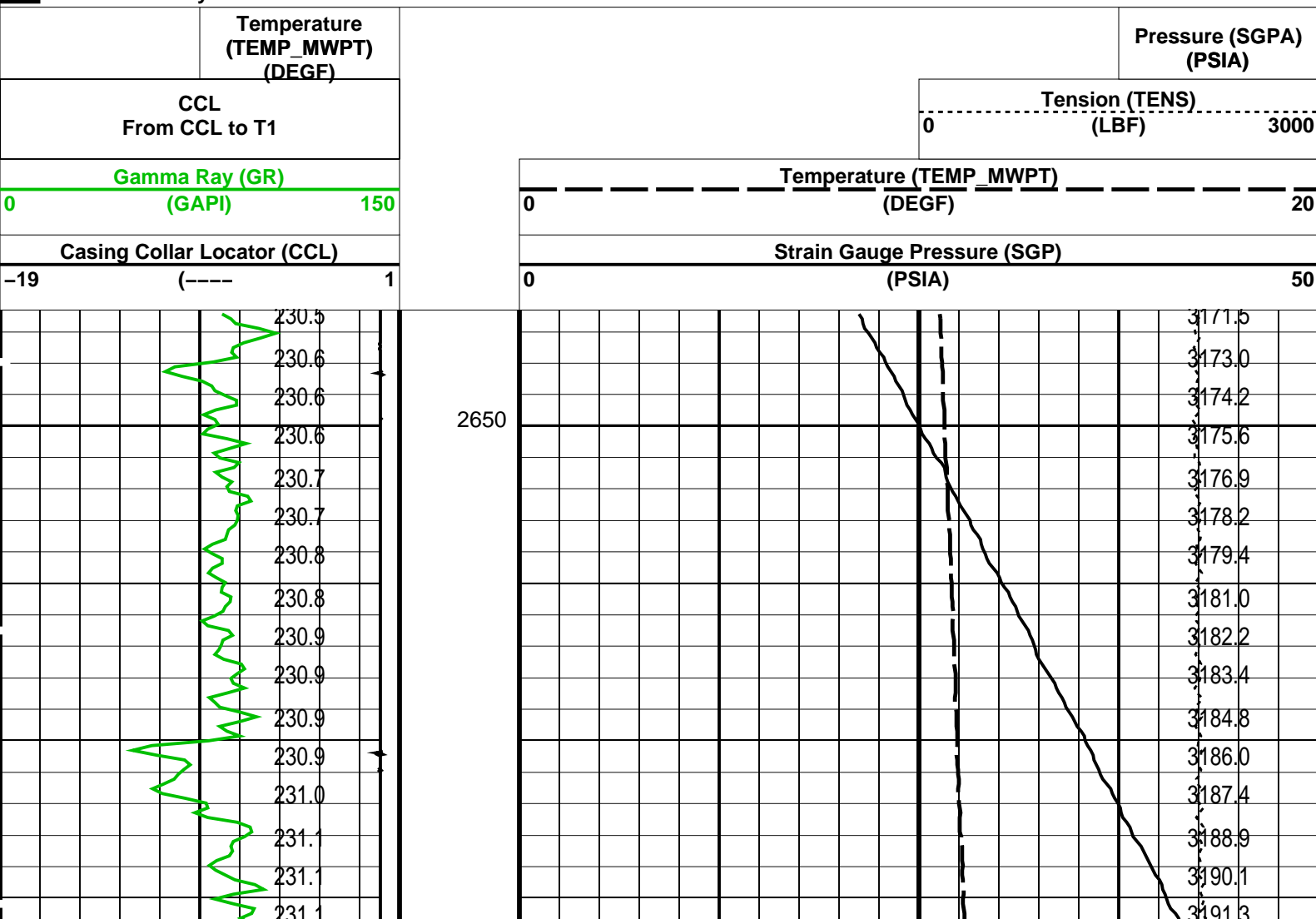
MAXIS Field Log

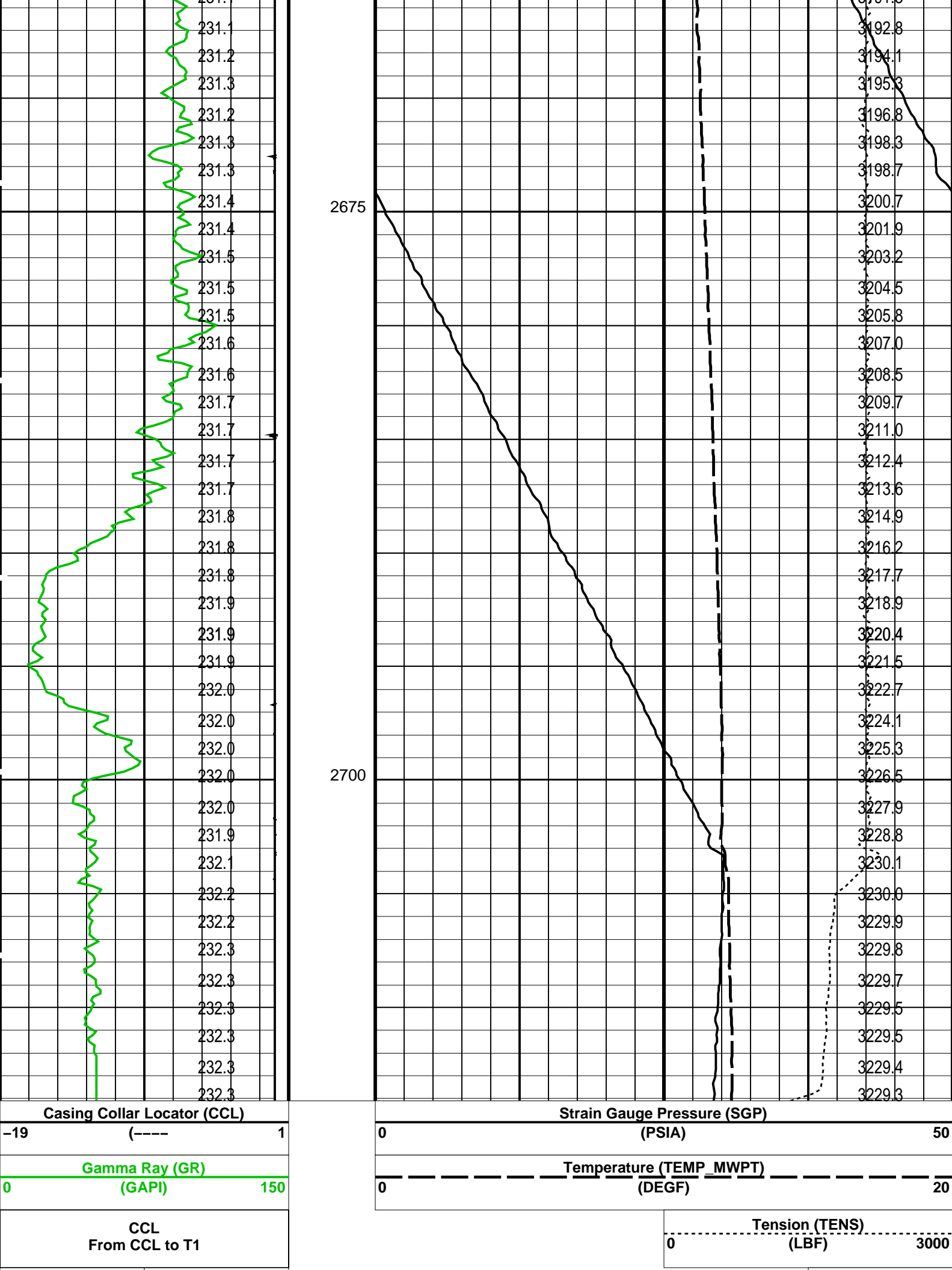
## 2646.9 M

## 2646.3 M

14C0-302

## PIP SUMMARY





	Temperature (TEMP_MWPT) (DEGF)		Pressure (SGPA) (PSIA)
PIP SUMMARY			
Time Mark Every 60 S			
Parameters			
DLIS Name	Description	Value	
	MWPT-CA: MEASUREMENT WHILE PERFORATING TOOL		
DEVI_FL_CORR	Deviation Angle for Flow Line Correction	0	DEG
FLD	Flow Line Density	1	G/C3
MWPT_NULL_SOURCE	MWPT NULL Temperature Source	TEMS	
MWPT_NULL_TEMP	MWPT NULL Temperature	0.0	DEGC
	System and Miscellaneous		
DO	Depth Offset for Playback	-1.0	M
PP	Playback Processing	NORMAL	
Format: MWP		Vertical Scale: 1:200	Graphics File Created: 25-Aug-2006 17:26
OP System Version: 14C0-302			
MCM			
MWP_GUN	14C0-302	MWPT-CA	14C0-302
MWGT-AA	14C0-302		
Input DLIS Files			
DEFAULT	PERFO_013LUP	FN:12	PRODUCER 25-Aug-2006 17:15 2715.2 M 2646.9 M
Output DLIS Files			
DEFAULT	PERFO_014PUP	FN:13	PRODUCER 25-Aug-2006 17:26
Company: Esso Australia Ltd.			
Well: A-2a			
Field: Flounder			
Rig : Prod4 / Crane			
Country: Australia			
Schlumberger			
MWPT 2 1/8" powerjet Perforating Record MPBT 7" Posiset Plug			