

Company: Esso Australia Pty.

Well: A12

Field: Tuna

Rig: Prod 2 / Crane

Country: Australia

MPBT Dummy Run
GR, CCL, Press, Temp
Scale: 1:200

Prod 2 / Crane
Tuna
Gippsland
A12
Esso Australia Pty.

Rig:
Field:
Location:
Well:
Company:

LOCATION	
Gippsland	Elev.: K.B. 32.9 m
Basin	G.L. -59 m
Bass Strait	D.F. 31.4 m
Permanent Datum:	Mean Sea Level
Log Measured From:	Kelly Bushing
Drilling Measured From:	Kelly Bushing

State: Victoria	Max. Well Deviation 41 deg	Longitude 148°25' 05.588"E	Latitude 38°10' 16.235"S
-----------------	----------------------------	----------------------------	--------------------------

Logging Date

13-Feb-2006

Run Number

1

Depth Driller

2354 m

Schlumberger Depth

2345 m

Bottom Log Interval

2340 m

Top Log Interval

1952 m

Casing Fluid Type

Production Fluids

Salinity

Density

1 g/cm3

Fluid Level

BIT/CASING/TUBING STRING

Bit Size

8.500 in

From

1769 m

To

2565 m

Casing/Tubing Size

7.000 in

Weight

32 lbm/ft

Grade

K-55

From

1667 m

To

2516 m

Maximum Recorded Temperatures

100 degC

Logger On Bottom

12-Feb-2006

Unit Number

3827 AU5L

Recorded By

R. Gerhardt, O. Tahmiscic

Witnessed By

Mark Wilson, Bruce Woodward

Run 1

Run 2

R

Oil Density
Water Salinity
Gas Gravity
Bo

Bw

1/Bq

Bubble Point Pressure

Bubble Point Temperature

Solution GOR

Maximum Deviation

41 deg

CEMENTING DATA

Primary/Squeeze

Primary

Casing String No

Lead Cement Type

Volume

Density

Water Loss

Additives

Tail Cement Type

Volume

Density

Water Loss

Additives

Expected Cement Top

Logging Date

Run Number

Depth Driller

Schlumberger Depth

Bottom Log Interval

Top Log Interval

Casing Fluid Type

Salinity

Density

Fluid Level

BIT/CASING/TUBING STRING

Bit Size

From

To

Casing/Tubing Size

Weight

Grade

From

To

Maximum Recorded Temperatures

Logger On Bottom

Unit Number

Recorded By

Witnessed By

Date Created: 16-APR-2006 2:27:49

Logging Cable

Type:	2-32ZT
Serial Number:	4202
Length:	6722.97 M
Conveyance Method:	Wireline
Rig Type:	Offshore Fixed

Log Sequence:	Subsequent Trip To the Well
Reference Log Name:	TUNA A12 CORRELATION LOGS
Reference Log Run Number:	
Reference Log Date:	23-Apr-2003
Subsequent Trip Down Log Correction:	2.90 M

1. All Schlumberger Depth Control Procedures followed.
2. Log correlated to correlation log provided by Esso.
3. GR response used for correlation.
4. IDW used as Primary Depth Control.
5. Z-Chart used as Secondary Depth Control.
- 6.

THE USE OF AND RELIANCE UPON THIS RECORDED-DATA BY THE HEREIN NAMED COMPANY (AND ANY OF ITS AFFILIATES, PARTNERS, REPRESENTATIVES, AGENTS, CONSULTANTS AND EMPLOYEES) IS SUBJECT TO THE TERMS AND CONDITIONS AGREED UPON BETWEEN SCHLUMBERGER AND THE COMPANY, INCLUDING: (a) RESTRICTIONS ON USE OF THE RECORDED-DATA; (b) DISCLAIMERS AND WAIVERS OF WARRANTIES AND REPRESENTATIONS REGARDING COMPANY'S USE OF AND RELIANCE UPON THE RECORDED-DATA; AND (c) CUSTOMER'S FULL AND SOLE RESPONSIBILITY FOR ANY INFERENCE DRAWN OR DECISION MADE IN CONNECTION WITH THE USE OF THIS RECORDED-DATA.

OTHER SERVICES2
OS1:
OS2:
OS3:
OS4:
OS5:

REMARKS: RUN NUMBER 2

Pressure and temperature gathered from PBMS sensors.

Total depth reached by logger was 2345 mMDKB.

Tool configuration as per enclosed tool sketch.

Well sketch copied from Workover Program.




Day crew: K. Kerr and J. Light

Night crew: S. Kiss and L. Wright

Performed by Schlumberger.

RUN 1			RUN 2		
SERVICE ORDER #:		AUSL06185762	SERVICE ORDER #:		
PROGRAM VERSION:		14C0-302	PROGRAM VERSION:		
FLUID LEVEL:			FLUID LEVEL:		
LOGGED INTERVAL	START	STOP	LOGGED INTERVAL	START	STOP

EQUIPMENT DESCRIPTION

RUN 1		RUN 2	
SURFACE EQUIPMENT			
WITM-A 415			
DOWNHOLE EQUIPMENT			
MH-SWHS MH-SWHS		7.82	
EQF-43 EQF-43		7.34	
PSPT-B PSC-A PSPT-B PSTC PBMS-B 818 CQG_F_Mano RTD_Thermometer GR 33066 CCL PBMS	 		

PBMS PSTC

2.99

AH-MPBT dummy
AH-MPBT

2.99

Tension HV
TOOL ZERO 0.00

MAXIMUM STRING DIAMETER 1.69 IN
MEASUREMENTS RELATIVE TO TOOL ZERO
ALL LENGTHS IN METERS

Client: Esso Australia Pty.

Well: A12

Field: Tuna

State: Victoria

Country: Australia

Rig Name: Prod 2 / Crane

Reference Datum: Kelly Bushing

Elevation: 32.9 m

2/10/2006

Production String	(in)		(m)	Well Schematic				(m)		(in)		Casing String
	OD	ID	MD					MD	OD	ID		
Tubing	3.500		0.0					0.0	9.750		Casing String	
								0.0	13.500		Casing String	
								732.8	13.500		Casing Shoe	

Company: Esso Australia Pty.

Well: A12

Input DLIS Files

DEFAULT	PSP_006LUP	FN:5	PRODUCER	16-Apr-2006 02:01	2345.0 M	1947.7 M
---------	------------	------	----------	-------------------	----------	----------

Output DLIS Files

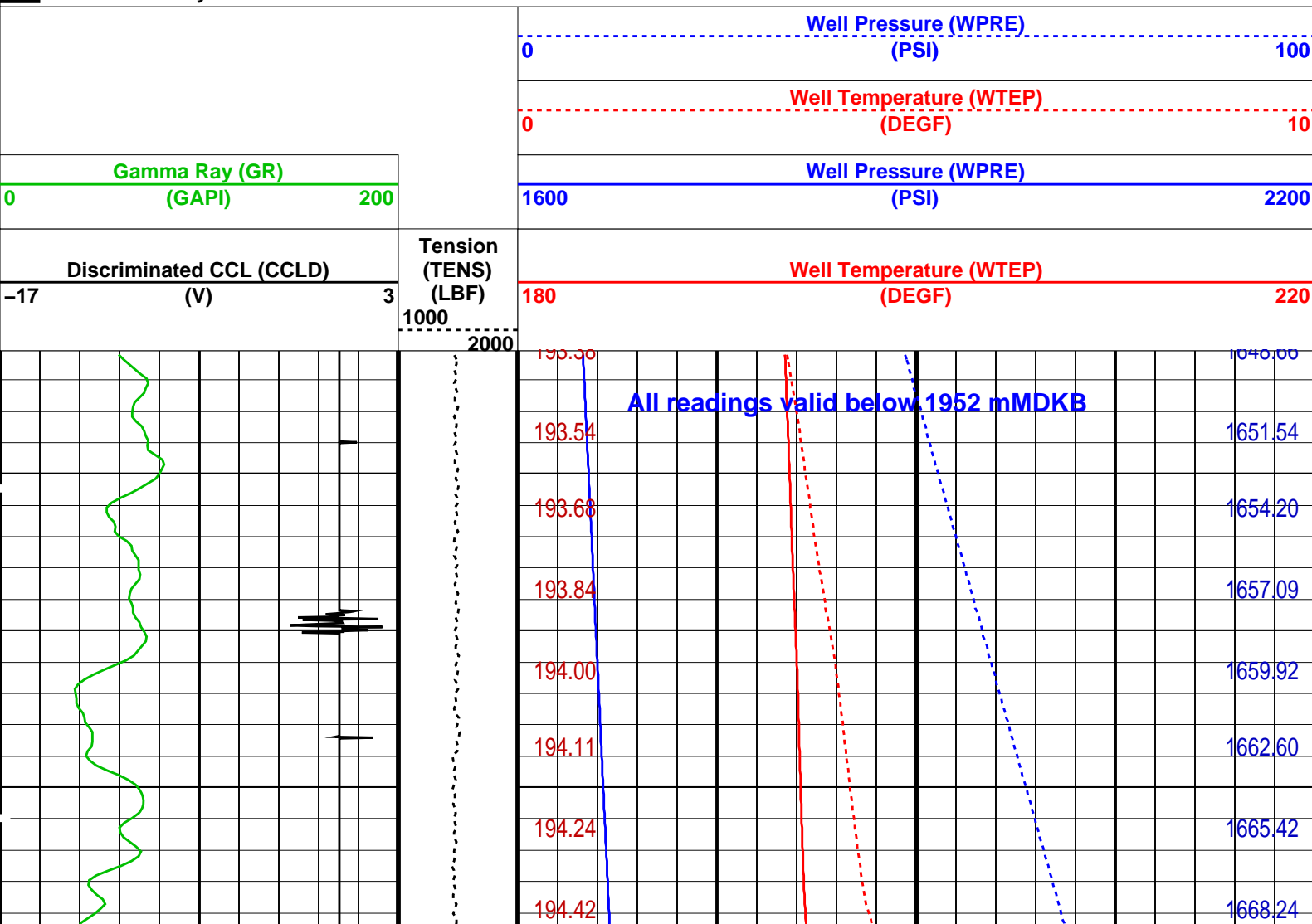
DEFAULT	PSP_013PUP	FN:19	PRODUCER	17-Apr-2006 16:08	2347.9 M	1951.0 M
CUSTOMER	PSP_013PUC	FN:20	CUSTOMER	17-Apr-2006 16:08	2347.9 M	1951.0 M

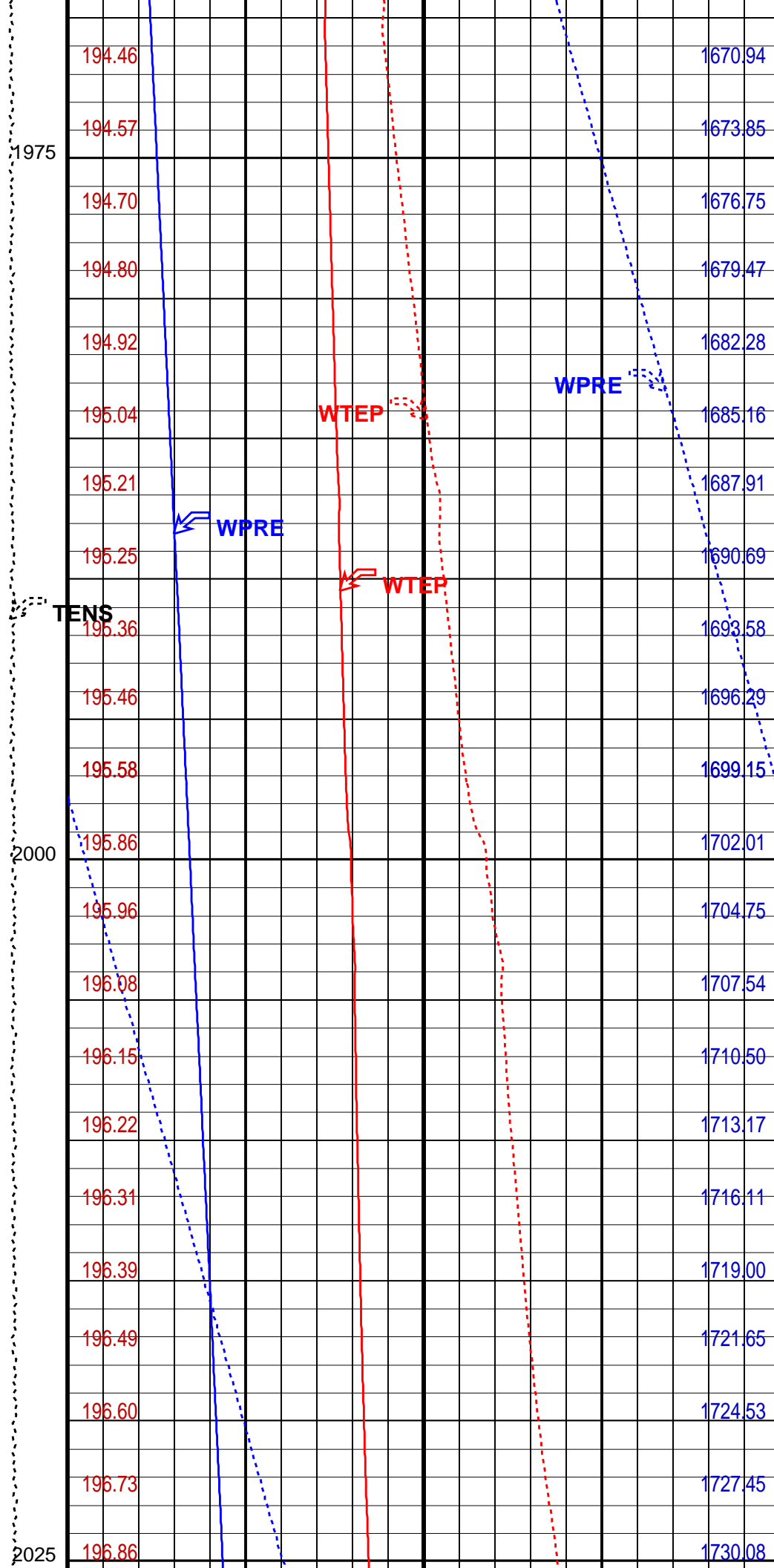
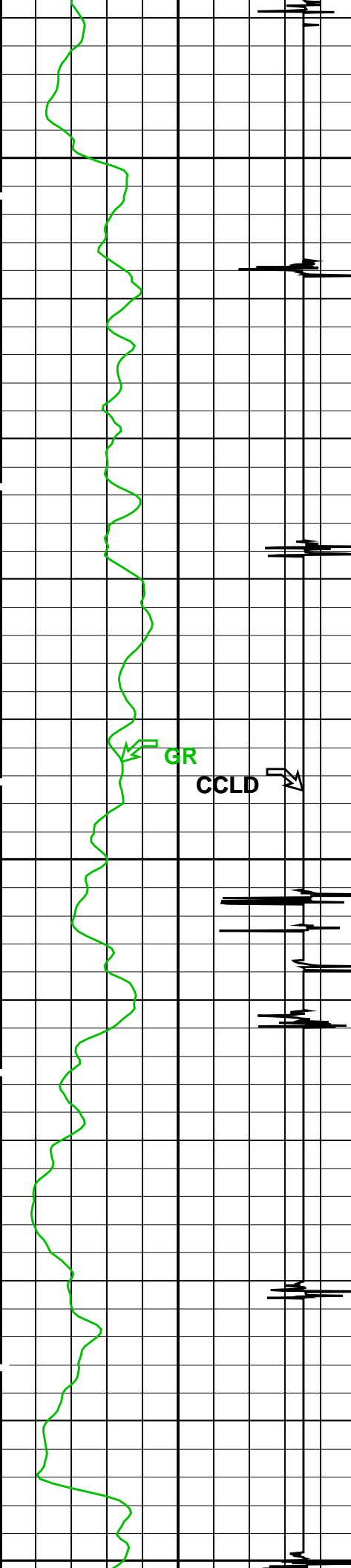
OP System Version: 14C0-302
MCM

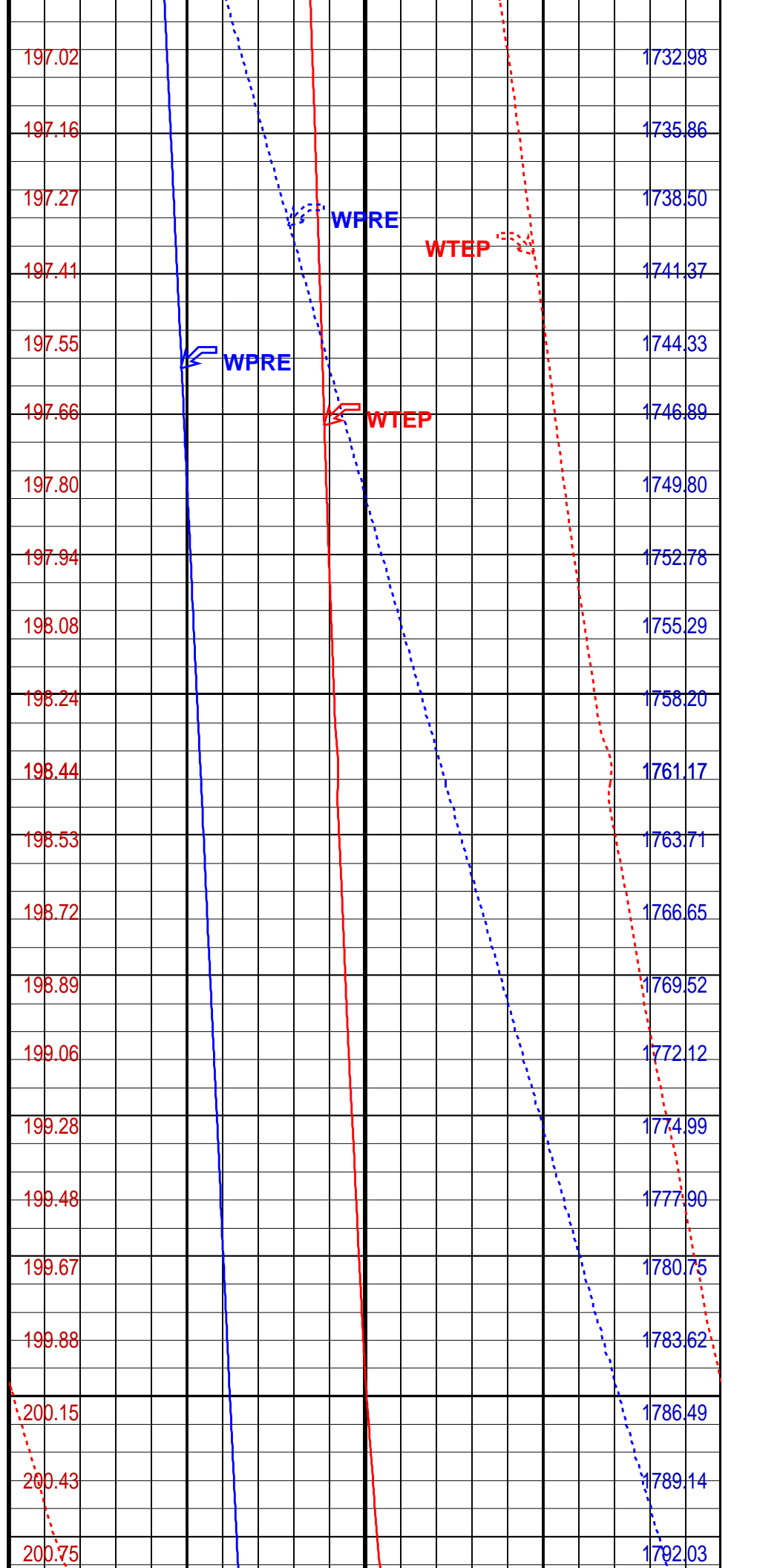
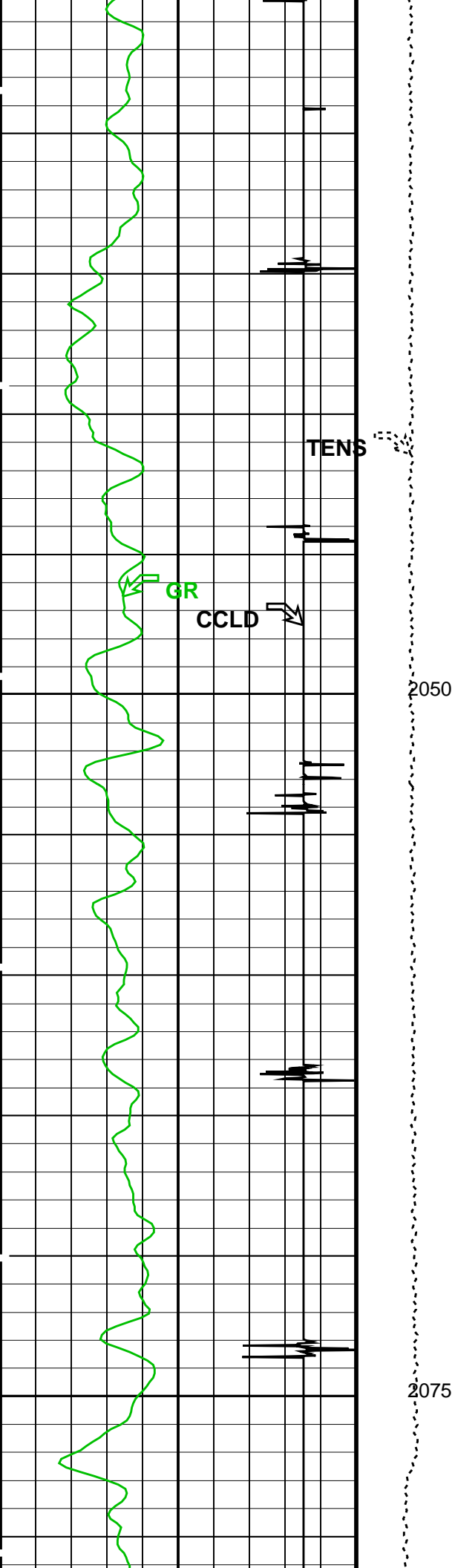
PSPT-B 14C0-302

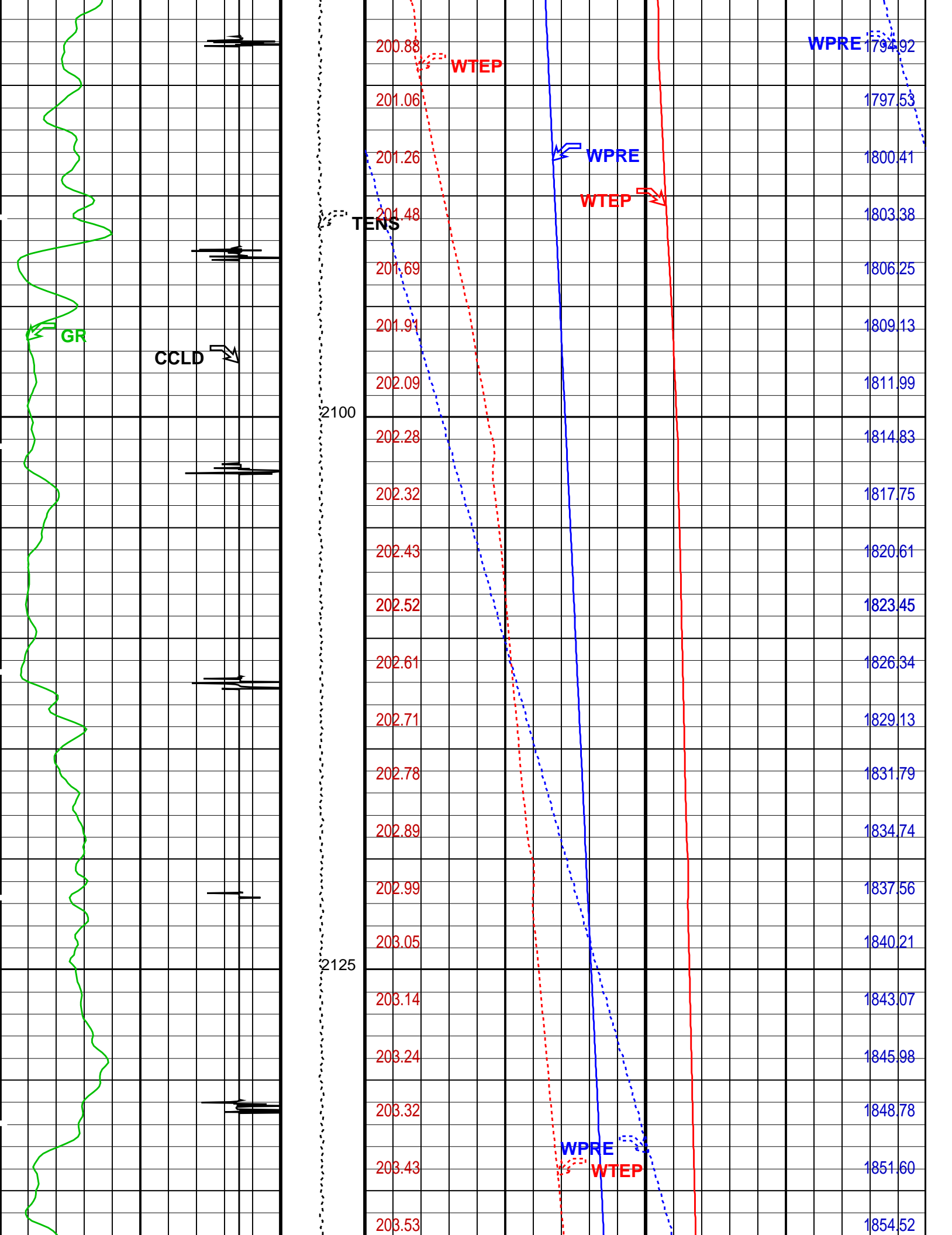
PIP SUMMARY

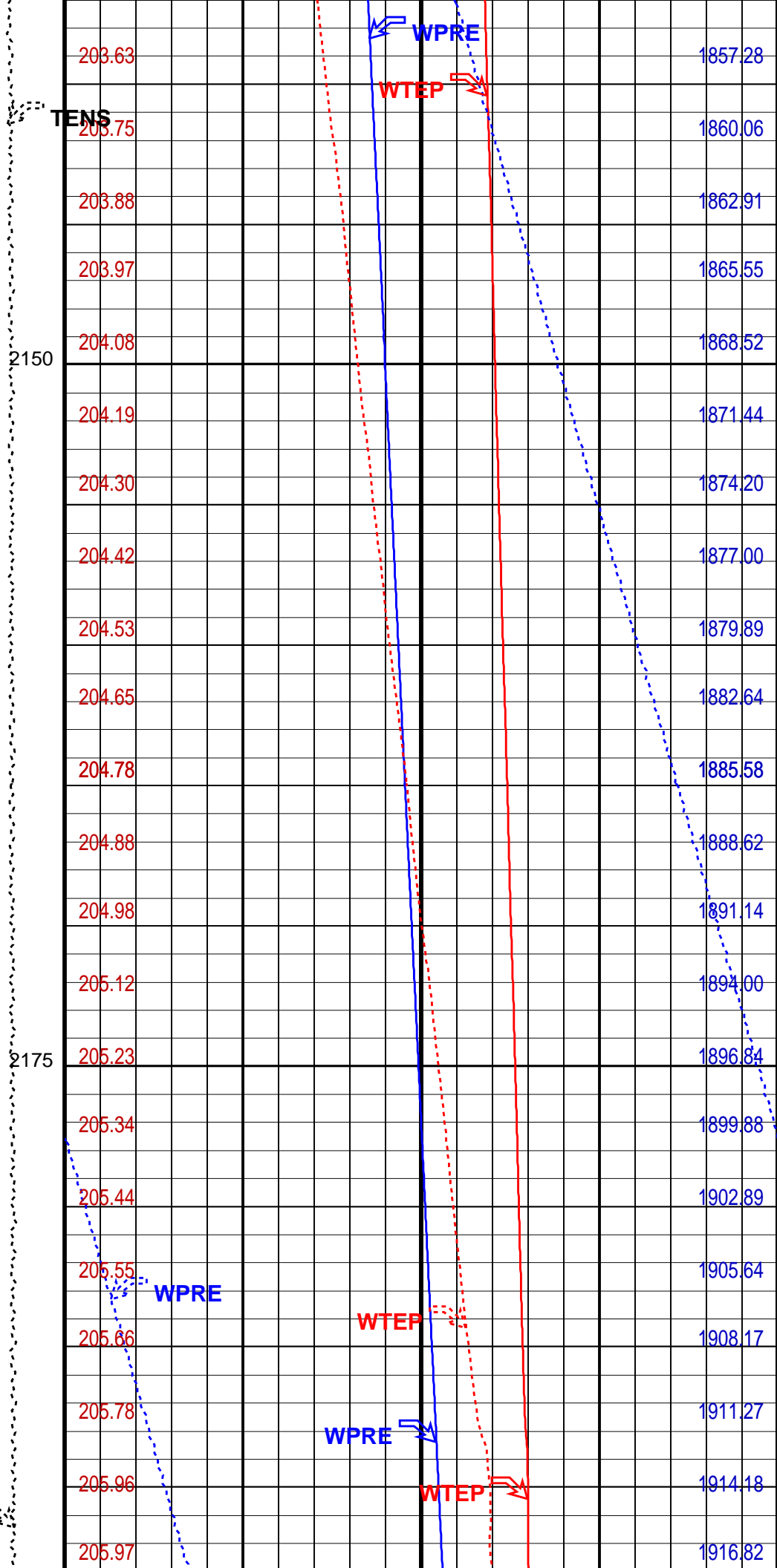
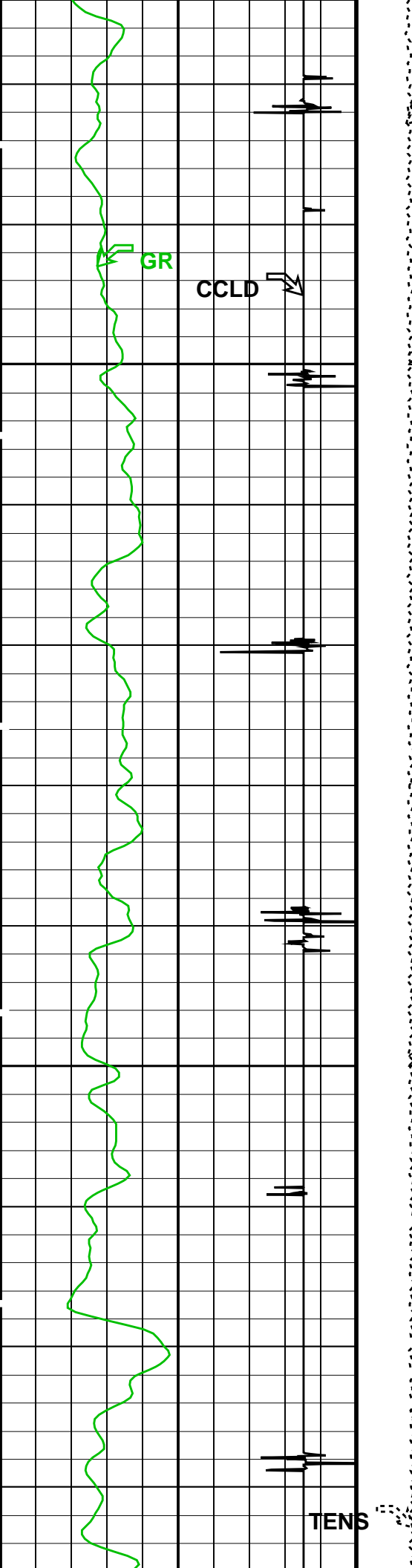
Time Mark Every 60 S

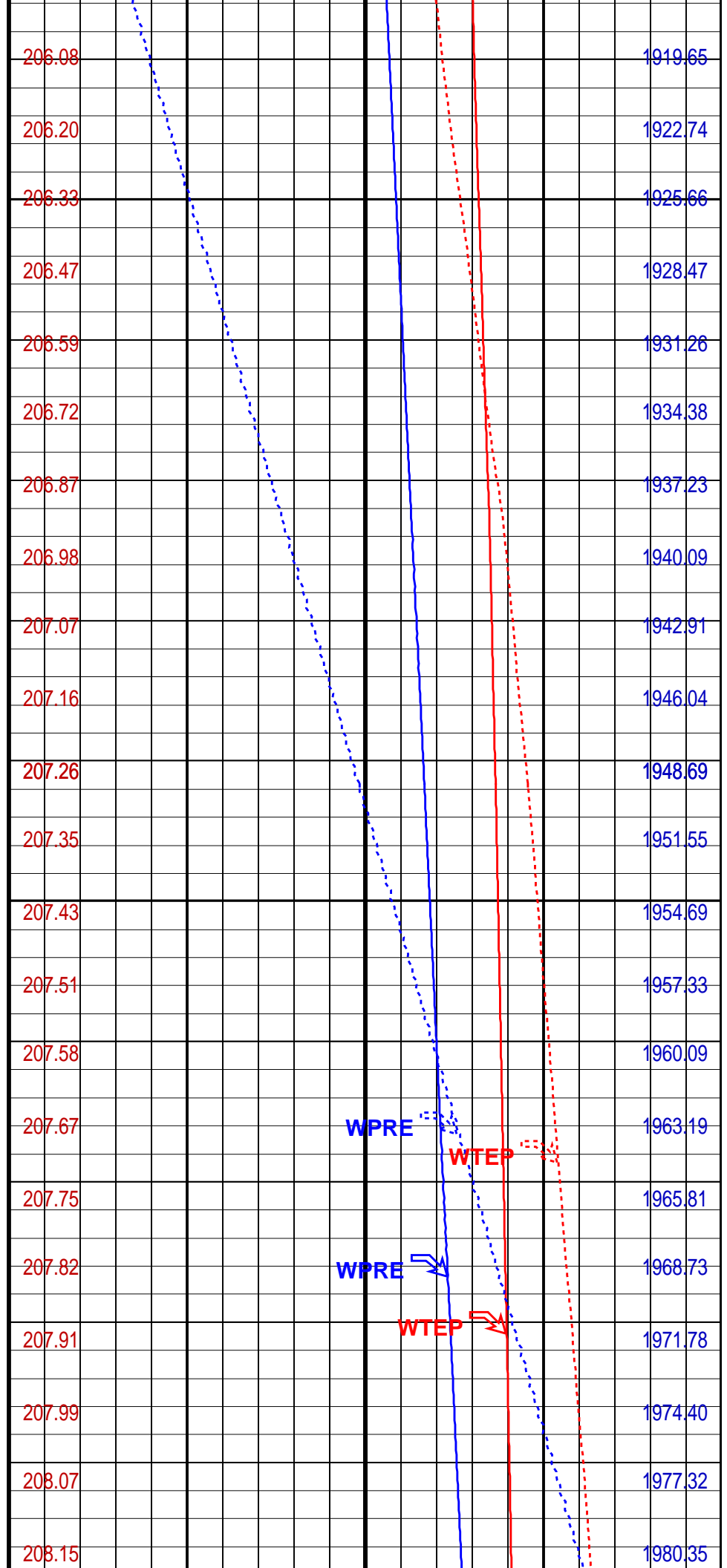
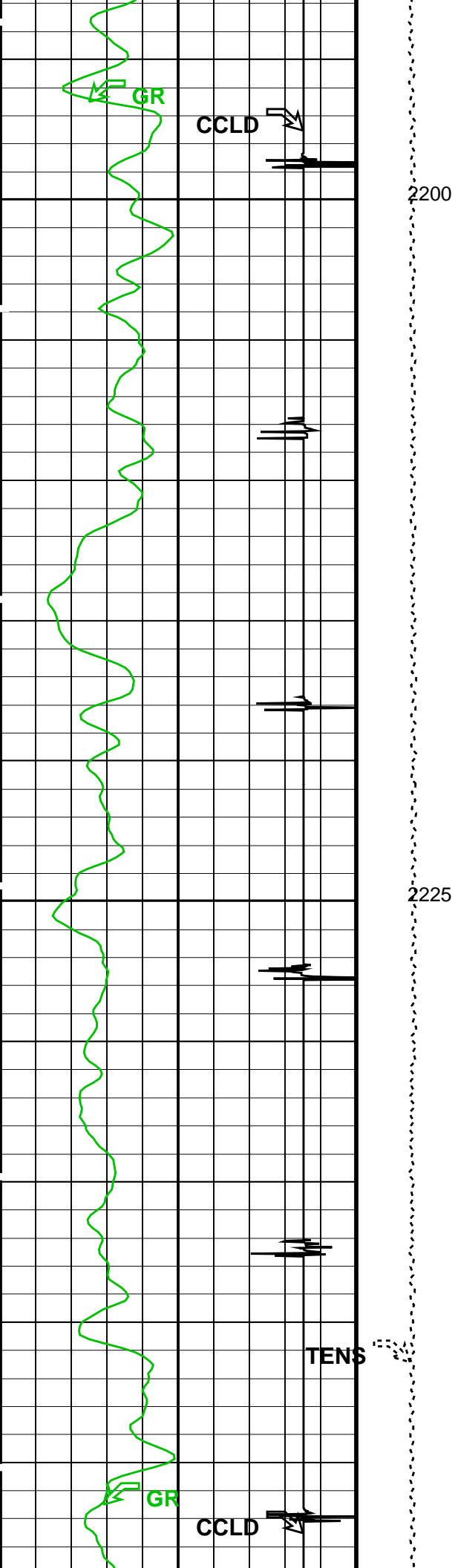


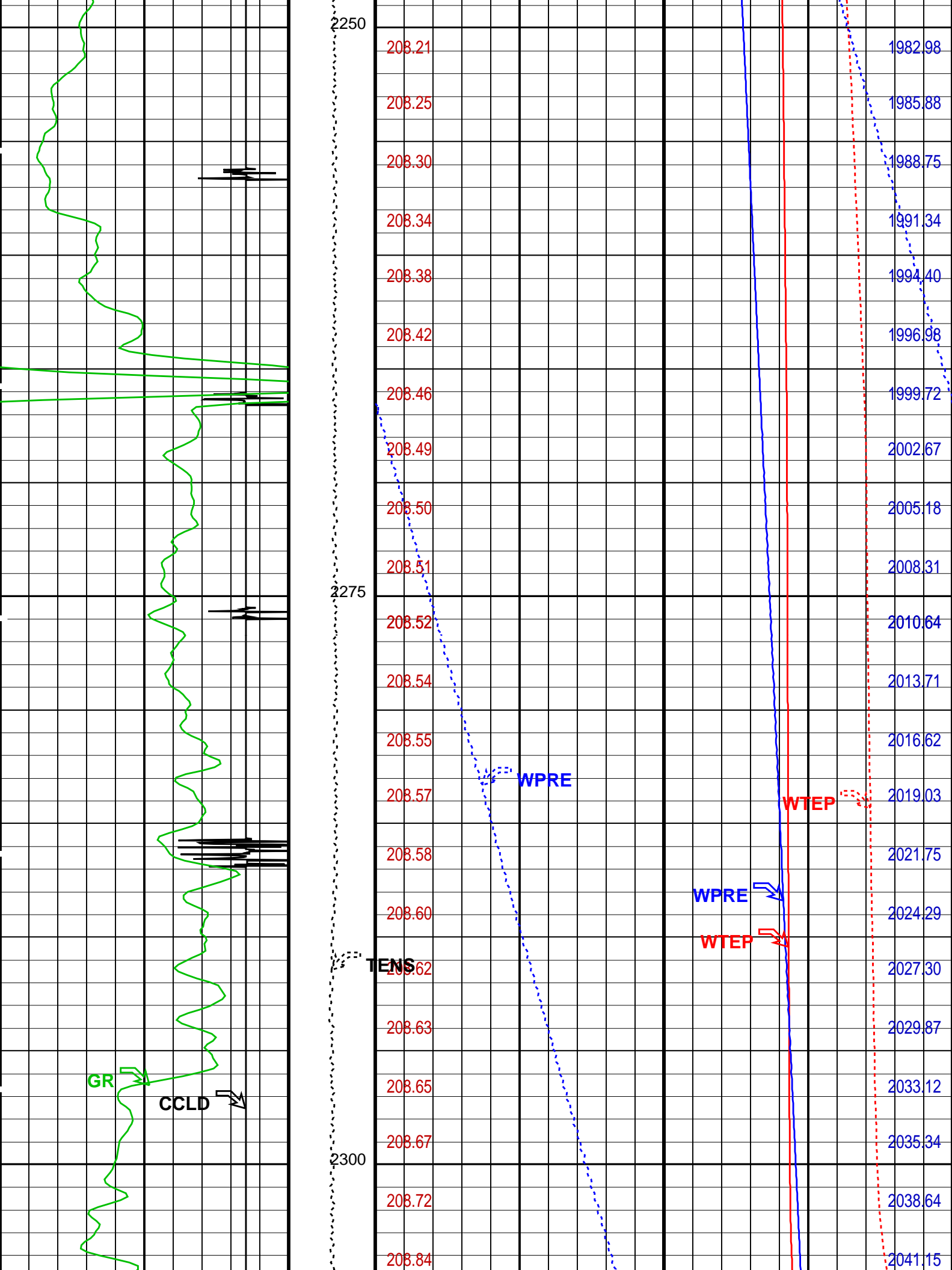


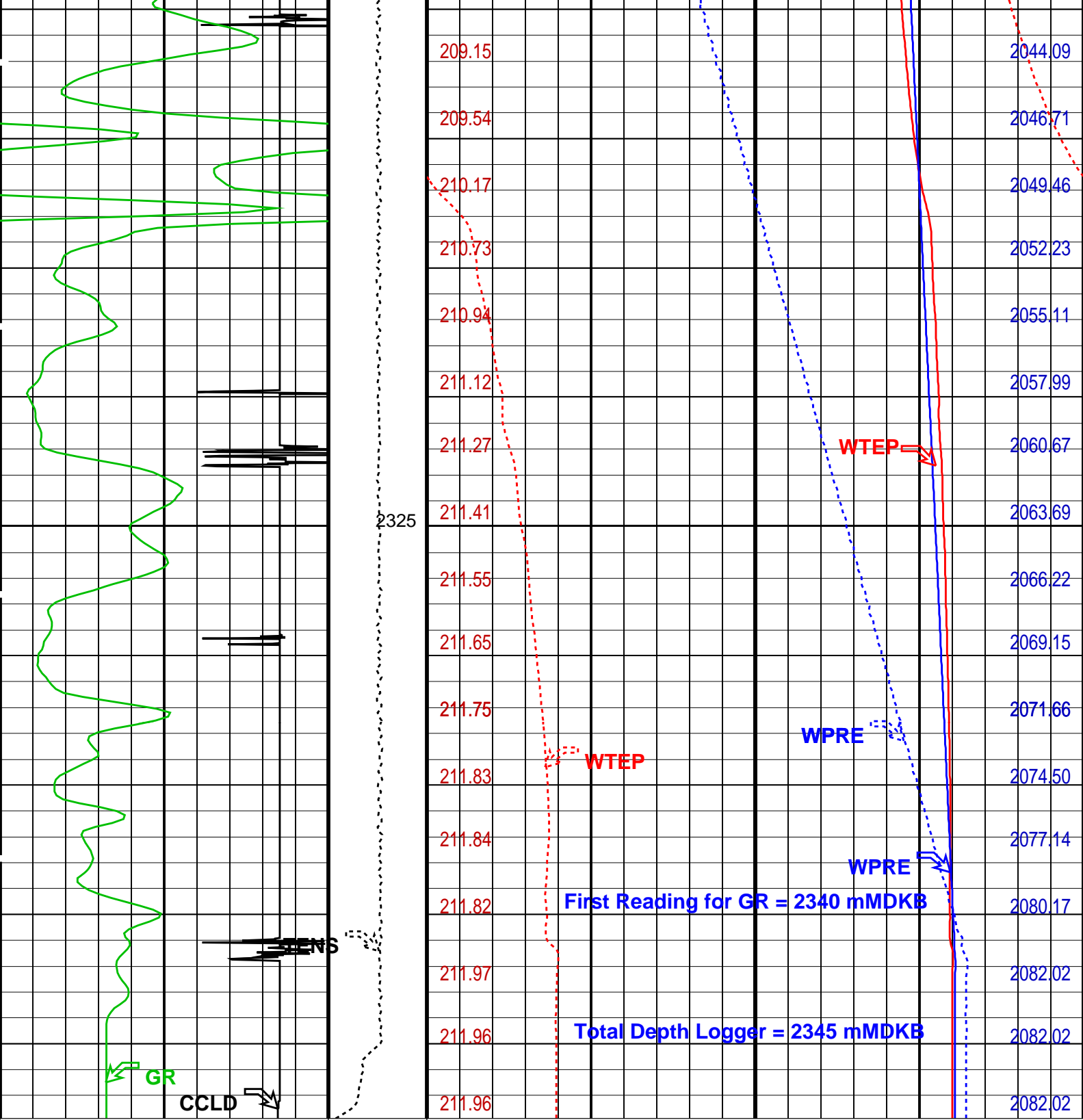












Discriminated CCL (CCLD)			Tension (TENS) (LBF)	Well Temperature (WTEP)	
-17	(V)	3		180	220
				1000	(DEGF)
				2000	
Gamma Ray (GR)				Well Pressure (WPRE)	
0	(GAPI)	200		1600	2200
				Well Temperature (WTEP)	
				0	10
					(DEGF)
				Well Pressure (WPRE)	
				0	100
					(PSI)

PIP SUMMARY

OP System Version: 14C0-302

MCM

PSPT-B

14C0-302

Parameters

DLIS Name	Description	Value
DO	System and Miscellaneous	
PP	Depth Offset for Playback	2.9 M
	Playback Processing	NORMAL

Input DLIS Files

DEFAULT	PSP_006LUP	FN:5	PRODUCER	16-Apr-2006 02:01	2345.0 M	1947.7 M
---------	------------	------	----------	-------------------	----------	----------

Output DLIS Files

DEFAULT	PSP_013PUP	FN:19	PRODUCER	17-Apr-2006 16:08	
CUSTOMER	PSP_013PUC	FN:20	CUSTOMER	17-Apr-2006 16:08	



PBMS Coefficients

MAXIS Field Log

Client:	Esso Australia Pty.	Tool:	PSP
Field:	Tuna	Sub Type:	PBMS
Well:	A12	Sensor:	GR
Run date:	13-Feb-2006		

PBMS Gamma Ray

Sonde Serial NB RESISTORS FOR GR SENSOR N.33066,TOOL PBMS-BA0818. SENSOR S/N:

Sensor Serial NB 33066

Calib Date ddmmyy 121198

Matrix Size 12

Coeff CRC 6C7B

GR HV Rt

	Rt**0	Rt**1
Rt**0	<div>+.200000000000e+04</div>	<div>+.332000000000e+04</div>

Client: Esso Australia Pty.

Field: Tuna

Well: A12

Run date: 13-Feb-2006

Tool: PSP

Sub Type: PBMS

Sensor: CQG

PBMS Quartz Gauge type F

Sonde Serial NB

Sensor Serial NB

Calib Date ddmmyy

Matrix Size

Coeff CRC

COEFFICIENTS FOR CQG PBMS-B.818 S/N:

818

200602

66

7A84

Pres Coeff

	Fb**0	Fb**1	Fb**2
Fc**0	+.695938574212E+04	+.182539955930E-01	-.359154837704E-06
Fc**1	-.105291628187E+01	-.126401060299E-04	-.979406719269E-10
Fc**2	+.100753854959E-05	+.477049804669E-10	+.110335143312E-14
Fc**3	+.395382698806E-11	+.314778129978E-15	0.0
Fc**4	0.0	0.0	0.0
Fc**5	0.0	0.0	0.0

	Fb**3	Fb**4	Fb**5
Fc**0	-.809245086181E-10	-.111835337565E-14	-.502462820660E-19
Fc**1	+.136628536954E-15	+.315291602467E-19	0.0
Fc**2	0.0	0.0	0.0
Fc**3	0.0	0.0	0.0
Fc**4	0.0	0.0	0.0
Fc**5	0.0	0.0	0.0

PBMS Quartz Gauge type F

Sonde Serial NB

Sensor Serial NB

Calib Date ddmmyy

Matrix Size

Coeff CRC

:

818

200602

66

59A1

Temp Coeff

	Fc**0	Fc**1	Fc**2
Fb**0	+1.110839792701E+03	-.323005293728E-03	+7.755069993532E-08
Fb**1	-.600525206062E-02	+1.183884956997E-07	+9.933435560854E-13
Fb**2	-.308226156102E-07	+2.256346973103E-12	-.229411734336E-17
Fb**3	-.878098011596E-12	+8.891595282110E-17	0.0
Fb**4	0.0	0.0	0.0
Fb**5	0.0	0.0	0.0

	Fc**3	Fc**4	Fc**5
Fb**0	+3.398844068662E-13	-.210661397195E-16	-.133520461817E-20
Fb**1	-.374426288501E-17	+3.385080947848E-22	0.0
Fb**2	0.0	0.0	0.0
Fb**3	0.0	0.0	0.0
Fb**4	0.0	0.0	0.0
Fb**5	0.0	0.0	0.0

PBMS Quartz Gauge type F

Sonde Serial NB :
 Sensor Serial NB 818
 Calib Date ddmmyy 200602
 Matrix Size 16
 Coeff CRC A86D

Clock Freq Coeff

	(Fb'-Fc')**0	(Fb'-Fc')**1	(Fb'-Fc')**2
(Fb'-Fc')**0	+3.310739038333E+05	+6.665122414534E-03	+1.101145789813E-05
	(Fb'-Fc')**3	(Fb'-Fc')**4	(Fb'-Fc')**5
(Fb'-Fc')**0	-.631768498034E-10	-.360569040810E-15	-.206730577746E-20

PBMS Quartz Gauge type F

Sonde Serial NB :
 Sensor Serial NB 818
 Calib Date ddmmyy 200602
 Matrix Size 16
 Coeff CRC FEC1

Clock Temp Coeff

	(Fb'-Fc')**0	(Fb'-Fc')**1	(Fb'-Fc')**2
(Fb'-Fc')**0	+1.124223501726E+03	-.549836300657E-02	-.350397469299E-07
	(Fb'-Fc')**3	(Fb'-Fc')**4	(Fb'-Fc')**5

(Fb'-Fc')**0	-.140939369077E-11	+.252361415442E-15	-.100871810102E-19
--------------	--------------------	--------------------	--------------------

Client:	Esso Australia Pty.	Tool:	PSP
Field:	Tuna	Sub Type:	PBMS
Well:	A12	Sensor:	WellTemp RTD
Run date:	13-Feb-2006		

PBMS RTD Well Thermometer

Sonde Serial NB	COEFFICIENTS FOR RTD THERMOMETER PBMS-B.818 S/N:
Sensor Serial NB	818
Calib Date ddmmyy	200602
Matrix Size	16
Coeff CRC	B5A6

WTemp Coeff

	Tt**0	Tt**1	Tt**2
Tt**0	-.503480948665E+03	+.256945212560E+03	-.520657837297E+02
	Tt**3	Tt**4	Tt**5
Tt**0	+.814992337556E+01	-.449846431124E+00	0.0

Company: Esso Australia Pty.



Well: A12
Field: Tuna
Rig: Prod 2 / Crane
Country: Australia

MPBT Dummy Run
GR, CCL, Press, Temp
Scale: 1:200