

Company: **Esso Australia Ltd.**

Well: **A27**

Field: **Fortescue**

Rig: **Prod4/Crane**

Country: **Australia**

MWPT / GR

2 1/8 Powerjet

6 spf 45deg Phased

Prod4/Crane

Fortescue

Gippsland

A27

Esso Australia Ltd.

LOCATION

Gippsland

Basin

Bass Strait

Elev.: K.B. 39.6 m

G.L. -69 m

D.F. 39.6 m

Permanent Datum: M.S.L.

Log Measured From: K.B.

Drilling Measured From: K.B.

Elev.: 0 m

39.6 m above Perm. Datum

State: Victoria

Max. Well Deviation 57 deg

Longitude 148 16' 36.62" E

Latitude 038 24' 31.49" S

Logging Date	19-Jun-2006			
Run Number	1			
Depth Driller	3505 m			
Schlumberger Depth	3501.6 m			
Bottom Log Interval	3501.6 m			
Top Log Interval	3450 m			
Casing Fluid Type	Production Fluids			
Salinity				
Density				
Fluid Level				
BIT/CASING/TUBING STRING				
Bit Size	9.875 in			
From				
To				
Casing/Tubing Size	7.625 in			
Weight	29.7 lbm/ft			
Grade	L-80			
From	19.47 m			
To	3659.95 m			
Maximum Recorded Temperatures				
Logger On Bottom	Time			
Unit Number	Location			7:30
Recorded By	G Wright, S Gilbert			
Witnessed By	G Rimmer			

PVT DATA				Run 1	Run 2	Run 3
Oil Density						
Water Salinity						
Gas Gravity						
Bo						
Bw						
1/Bg						
Bubble Point Pressure						
Bubble Point Temperature						
Solution GOR						
Maximum Deviation				57 deg		
CEMENTING DATA						
Primary/Squeeze				Primary		
Casing String No						
Lead Cement Type						
Volume						
Density						
Water Loss						
Additives						
Tail Cement Type						
Volume						
Density						
Water Loss						
Additives						
Expected Cement Top						
Logging Date						
Run Number						
Depth Driller						
Schlumberger Depth						
Bottom Log Interval						
Top Log Interval						
Casing Fluid Type						
Salinity						
Density						
Fluid Level						
BIT/CASING/TUBING STRING						
Bit Size						
From						
To						
Casing/Tubing Size						
Weight						
Grade						
From						
To						
Maximum Recorded Temperatures						
Logger On Bottom	Time					
Unit Number	Location					
Recorded By						
Witnessed By						

**DEPTH SUMMARY LISTING**

Date Created: 15-JUN-2006 8:09:47

**Depth System Equipment**

<b>Depth Measuring Device</b>		<b>Tension Device</b>		<b>Logging Cable</b>	
Type:	IDW-H	Type:	CMTD-C	Type:	2-23ZT
Serial Number:	797	Serial Number:	1037	Serial Number:	22372
Calibration Date:	10-May-2006	Calibration Date:	13-Jun-2006	Length:	4999.94 M
Calibrator Serial Number:	1009	Calibrator Serial Number:	1174	Conveyance Method: Wireline Rig Type: Offshore Mobile	
Calibration Cable Type:	2-32ZT	Calibration Gain:	1.35		
Wheel Correction 1:	-3	Calibration Offset:	772.00		
Wheel Correction 2:	-3				

**Depth Control Parameters**

Log Sequence:	Subsequent Log In the Well
Reference Log Name:	Fortescue A27 Correlation log
Reference Log Run Number:	1
Reference Log Date:	

**Depth Control Remarks**

1. Correlated to solar log provided by client
2. IDW used as primary depth control
3. Z-Chart used as secondary depth control.

**DISCLAIMER**

THE USE OF AND RELIANCE UPON THIS RECORDED-DATA BY THE HEREIN NAMED COMPANY (AND ANY OF ITS AFFILIATES, PARTNERS, REPRESENTATIVES, AGENTS, CONSULTANTS AND EMPLOYEES) IS SUBJECT TO THE TERMS AND CONDITIONS AGREED UPON BETWEEN SCHLUMBERGER AND THE COMPANY, INCLUDING: (a) RESTRICTIONS ON USE OF THE RECORDED-DATA; (b) DISCLAIMERS AND WAIVERS OF WARRANTIES AND REPRESENTATIONS REGARDING COMPANY'S USE OF AND RELIANCE UPON THE RECORDED-DATA; AND (c) CUSTOMER'S FULL AND SOLE RESPONSIBILITY FOR ANY INFERENCE DRAWN OR DECISION MADE IN CONNECTION WITH THE USE OF THIS RECORDED-DATA.

OTHER SERVICES <sup>1</sup>
OS1: None

REMARKS: RUN NUMBER 1
Log correlated to : ExxonMobil Fortescue A27 composite log.
Maximum deviation : 57deg @1635m MDKB
Perforation interval : 3494m MDKB to 3496.5mMDKB
SBHP: 3192psia SBHT: 225degf
FBHP: 3149psia FBHT: 224degf
Gun shot : 2.5m 2 1/8 Powerjet , 6spf , 45deg Phased

Schlumberger Crew: John Light , Andrew Hall

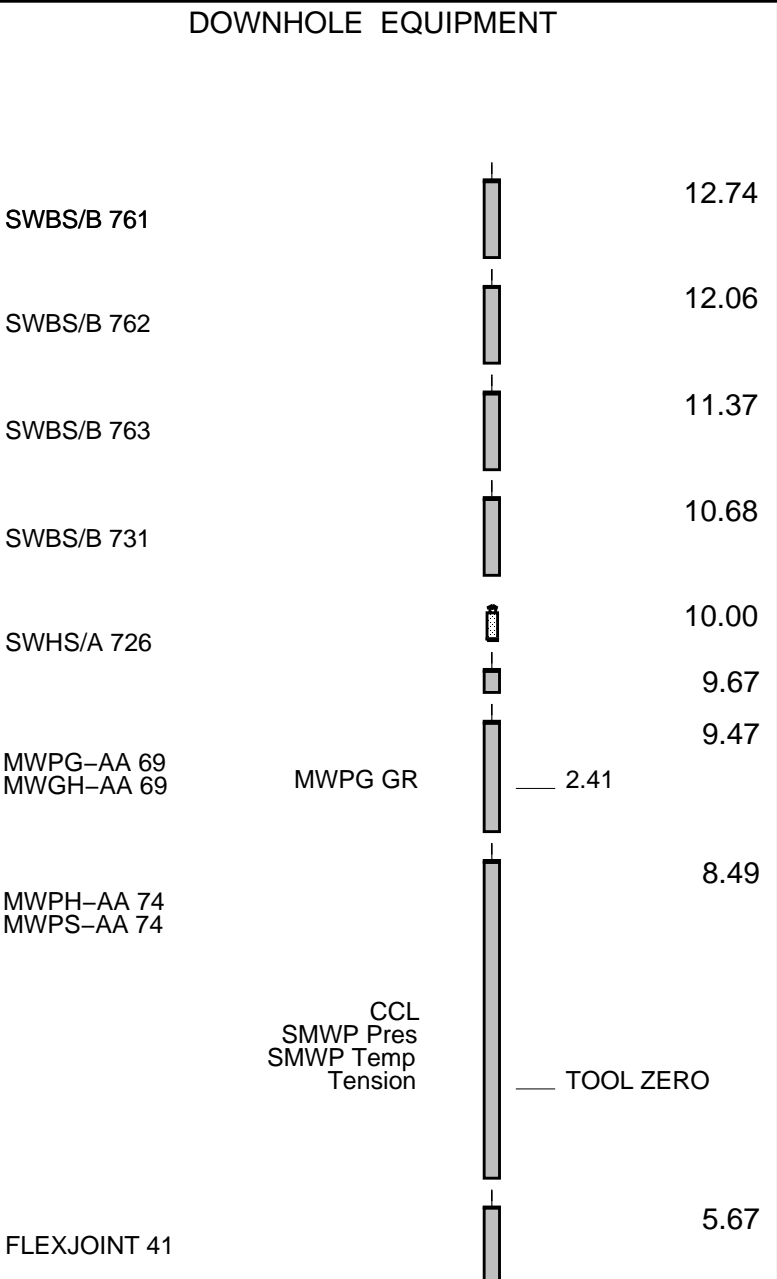
RUN 1  
SERVICE ORDER #: AUSL06297085  
PROGRAM VERSION: 14C0-302  
FLUID LEVEL:

LOGGED INTERVAL	START	STOP

EQUIPMENT DESCRIPTION

RUN 1

SURFACE EQUIPMENT  
MWPM-AA 3008



SAH-G 1047

MPD-H 268

ESIC 15042003

GUN-2 1/8" Powerjet Gun

5.01

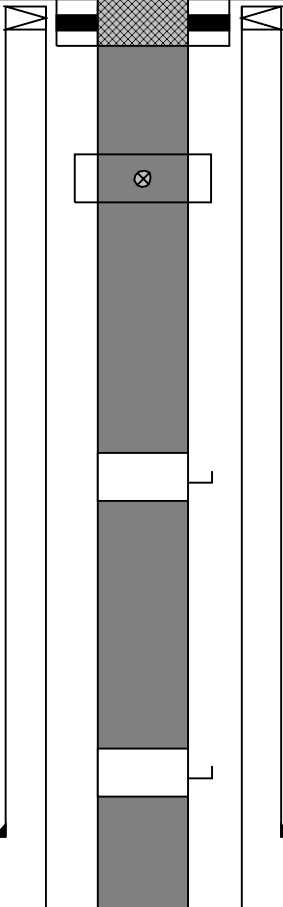
4.63

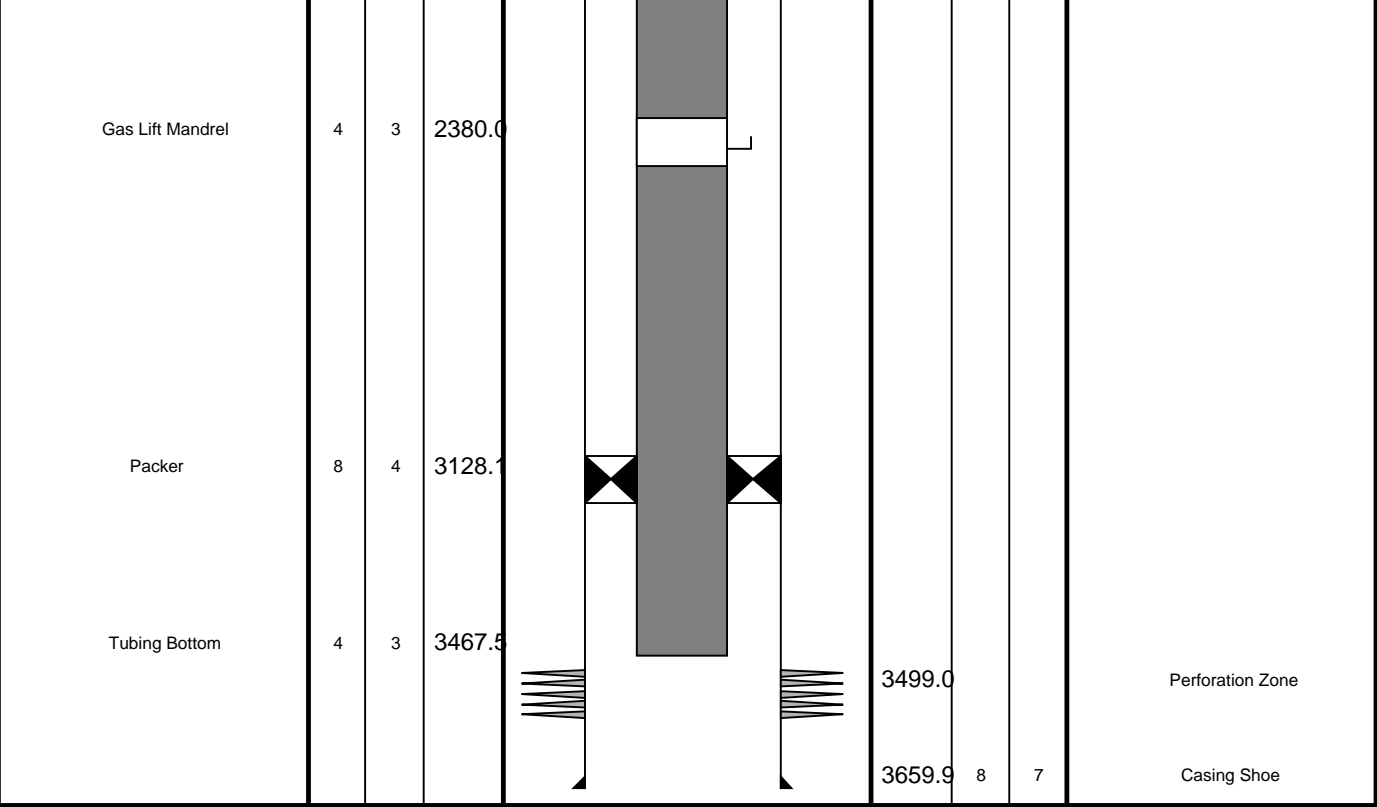
4.09

3.66

TOOL BOTTOM

MAXIMUM STRING DIAMETER 2.18 IN  
MEASUREMENTS RELATIVE TO TOOL ZERO  
ALL LENGTHS IN METERS

Production String	(in)		(m)	Well Schematic	(m)	(in)		Casing String
	OD	ID	MD		MD	OD	ID	
Tubing Tubing Hanger	4	3	19.1		19.5	8	7	Casing String Casing String Liner Hanger
	7	4	19.1		19.5	11	10	
					19.5	8	11	
SSSV	5	3	452.1					
Gas Lift Mandrel	4	3	1112.4					
Gas Lift Mandrel	4	3	1765.7					
					1858.5	11	10	Casing Shoe

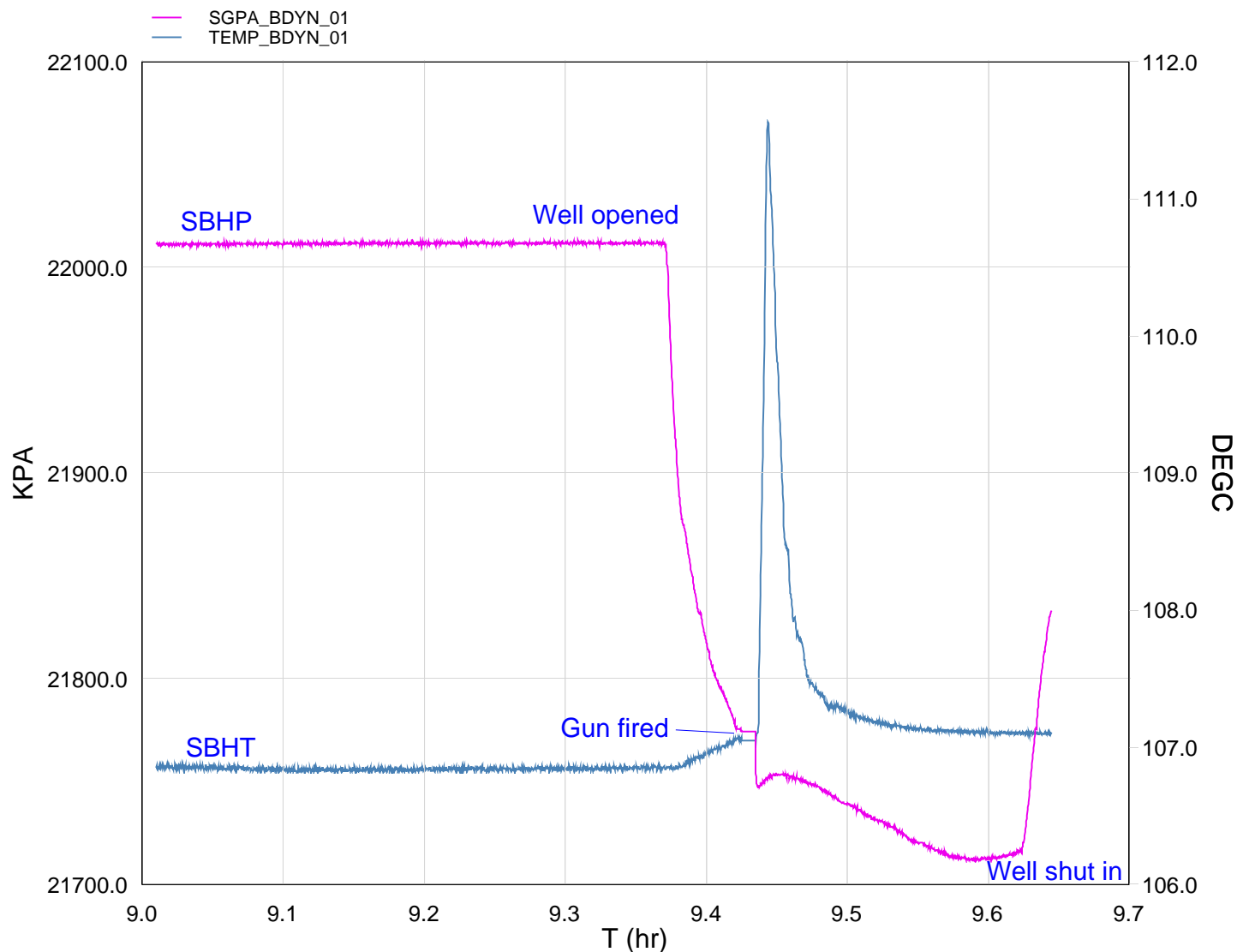


Job Events Summery

MAXIS Field Log

Schlumberger Job Event Summary

Time	Elapsed Time	Depth (M)	File
Log Pass (down)	19-Jun-2006 6:57	000:21	946.9 - 3497.7 PERFO_007LDP
Log Pass (up)	19-Jun-2006 7:20	000:07	3497.7 - 3445.0 PERFO_009LUP
Log Pass (up)	19-Jun-2006 7:34	000:09	3499.6 - 3445.9 PERFO_010LUP
Log Pass (up)	19-Jun-2006 8:56	000:48	3497.4 - 3448.2 PERFO_011LUP
Station Log	19-Jun-2006 9:00	000:38	3490.0 - 5.8 PERFO_012LTP



TIME	SGPA_SL	TEMP_MWPT_SL
------	---------	--------------

7400.0	3192.4431	224.3160
7440.0	3192.4695	224.3188
7480.0	3192.4402	224.3233
7520.0	3192.5313	224.3707
7560.0	3192.4981	224.3308
7600.0	3192.4126	224.3264
7640.0	3192.5332	224.3105
7680.0	3192.5264	224.3005
7720.0	3192.5264	224.2864
7760.0	3192.4695	224.3313

7800.0	3192.5906	224.2864
7840.0	3192.5352	224.3250
7880.0	3192.5039	224.2902
7920.0	3192.5620	224.2879
7960.0	3192.6196	224.2905
8000.0	3192.5610	224.2886
8040.0	3192.6186	224.3202
8080.0	3192.5620	224.3358
8120.0	3192.5640	224.3004
8160.0	3192.5039	224.3354
8200.0	3192.5906	224.2934
8240.0	3192.5886	224.3375
8280.0	3192.5303	224.3113
8320.0	3192.5303	224.3183
8360.0	3192.5916	224.3254
8400.0	3192.5313	224.3303
8440.0	3192.5332	224.2988
8480.0	3192.6225	224.3457
8520.0	3192.5906	224.3417
8560.0	3192.5630	224.3386
8600.0	3192.5029	224.3461
8640.0	3192.5313	224.3291
8680.0	3192.6245	224.3187
8720.0	3179.1628	224.3382
8760.0	3169.8062	224.4385
8800.0	3164.6756	224.5397
8840.0	3161.0464	224.5925
8880.0	3158.3267	224.6829
8920.0	3158.0862	224.6868
8960.0	3154.8039	232.7304
9000.0	3155.0100	227.3744
9040.0	3154.7649	226.0056
9080.0	3154.2895	225.3977
9120.0	3153.5654	225.1148
9160.0	3152.9030	225.0631
9200.0	3152.4163	224.9912
9240.0	3151.8293	224.9381
9280.0	3151.2265	224.8741
9320.0	3150.4653	224.8429
9360.0	3150.1025	224.8426
9400.0	3149.6433	224.8425
9440.0	3149.1955	224.8022
9480.0	3149.1299	224.8067
9520.0	3149.0732	224.8091
9560.0	3149.2832	224.7822
9600.0	3149.5883	224.7848
9640.0	3158.0220	224.7967
9680.0	3166.4375	224.7939

**Schlumberger**

Shooting Pass

# Output DLIS Files

DEFAULT      PERFO\_011LUP      FN:10    PRODUCER    19-Jun-2006 08:56    3497.4 M      3448.2 M

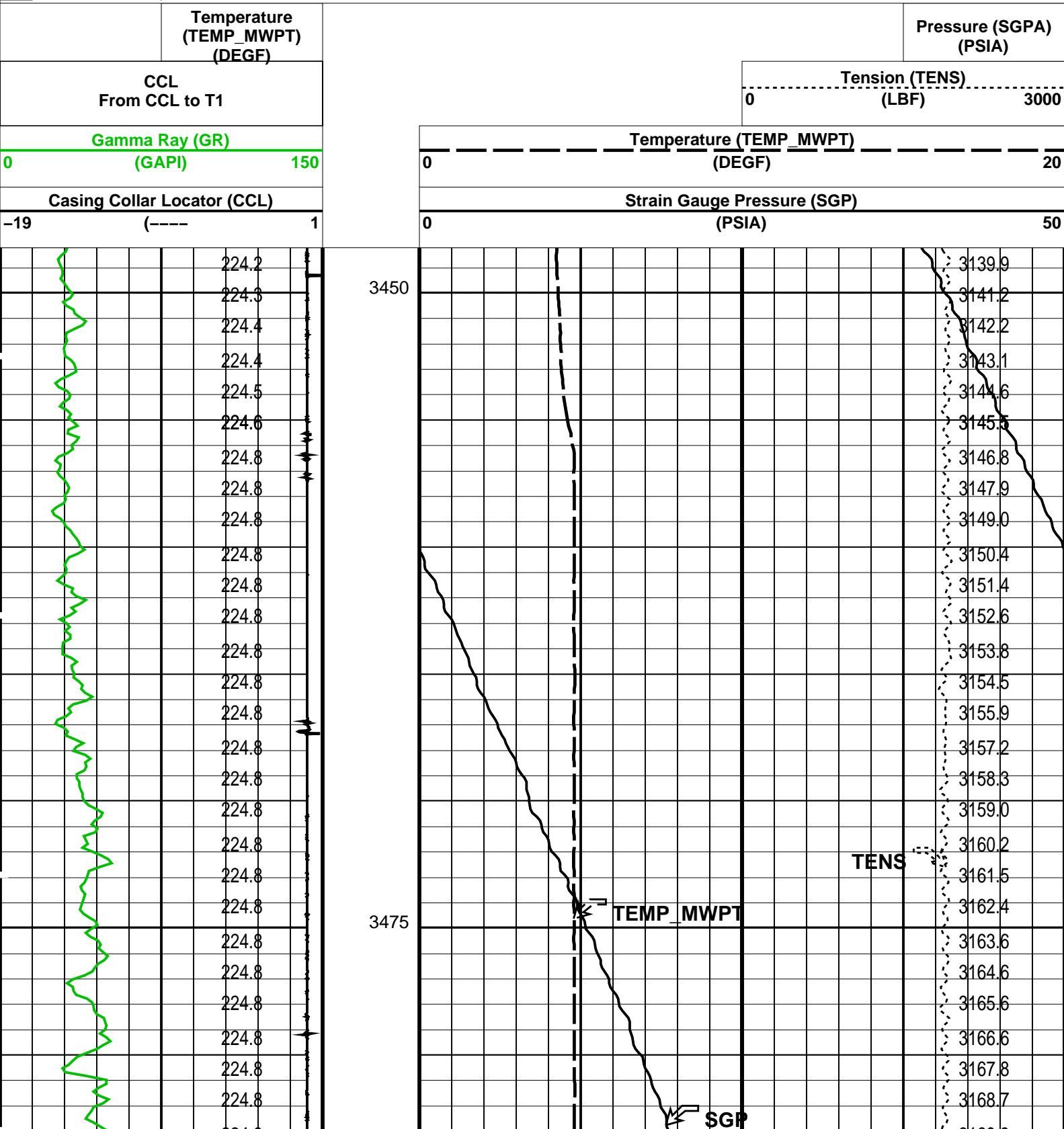
## OP System Version: 14C0-302

MCM

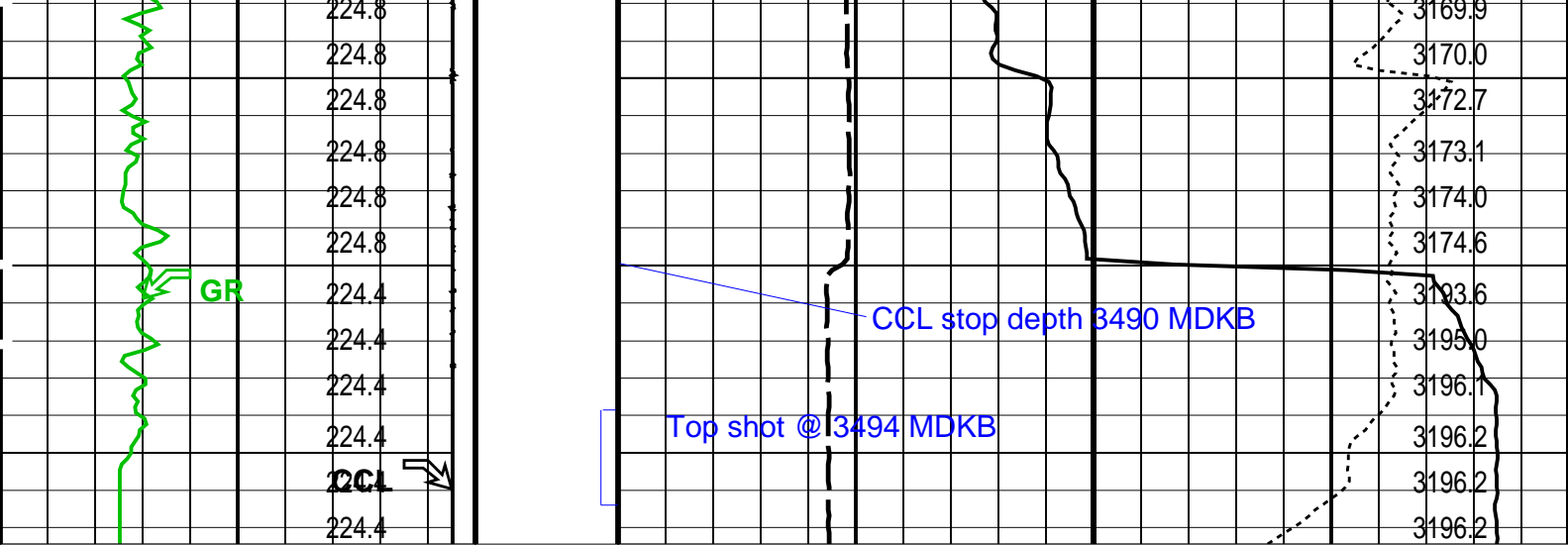
MWP\_GUN      14C0-302      MWPT-CA      14C0-302  
MWGT-AA      14C0-302

### PIP SUMMARY

Time Mark Every 60 S







Casing Collar Locator (CCL)		Strain Gauge Pressure (SGP)	
-19 (----) 1		0 (PSIA) 50	
Gamma Ray (GR)		Temperature (TEMP_MWPT)	
0 (GAPI) 150		0 (DEGF) 20	
CCL From CCL to T1		Tension (TENS)	
Temperature (TEMP_MWPT) (DEGF)		0 (LBF) 3000	
		Pressure (SGPA) (PSIA)	

#### PIP SUMMARY

Time Mark Every 60 S

#### Parameters

DLIS Name	Description	Value
MWPT-CA: MEASUREMENT WHILE PERFORATING TOOL		
DEVI_FL_CORR	Deviation Angle for Flow Line Correction	39 DEG
FLD	Flow Line Density	1 G/C3
MWPT_NULL_SOURCE	MWPT NULL Temperature Source	TEMS
MWPT_NULL_TEMP	MWPT NULL Temperature	0.0 DEGC

Format: MWP Vertical Scale: 1:200 Graphics File Created: 19-Jun-2006 08:56

#### OP System Version: 14C0-302

MCM

MWP_GUN	14C0-302	MWPT-CA	14C0-302
MWGT-AA	14C0-302		

#### Output DLIS Files

DEFAULT	PERFO_011LUP	FN:10	PRODUCER	19-Jun-2006 08:56
---------	--------------	-------	----------	-------------------

Schlumberger

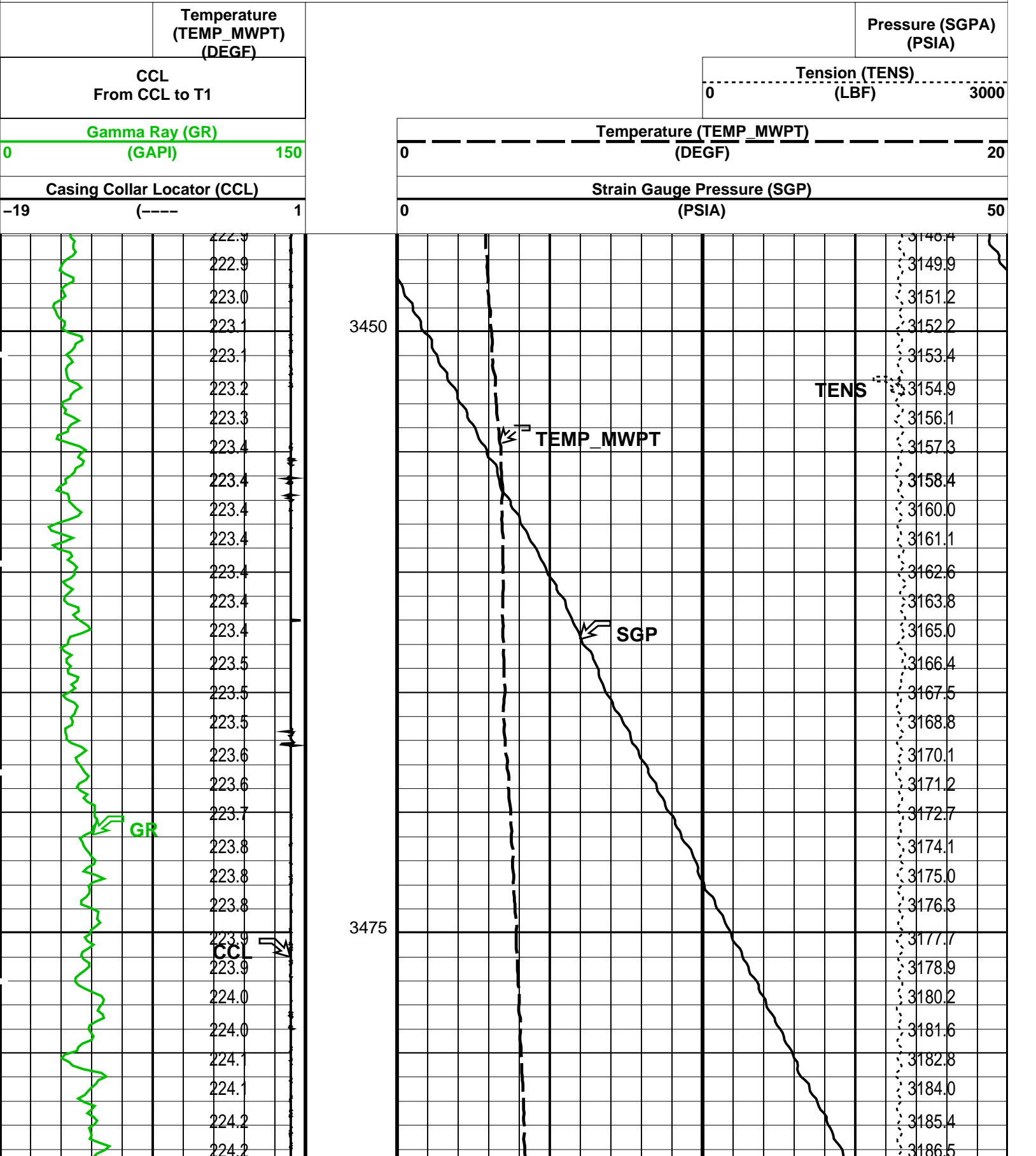
Correlation Pass

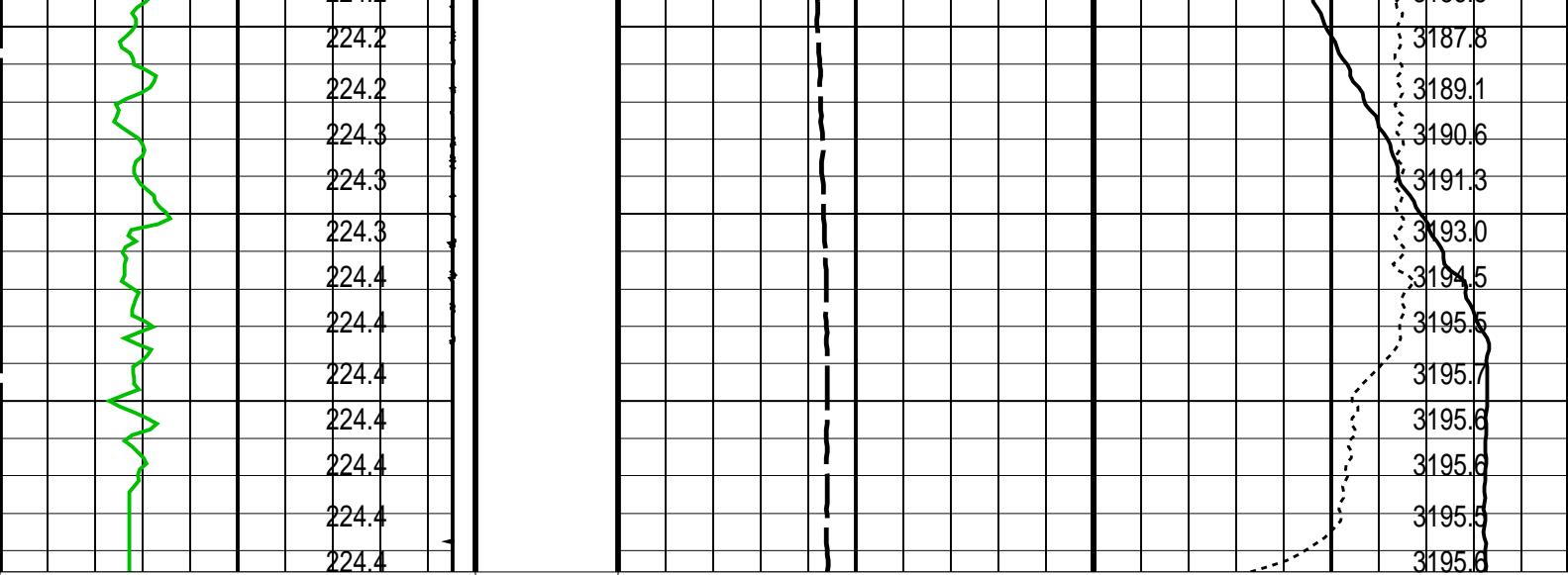
MAXIS Field Log

#### Output DLIS Files

PIP SUMMARY

Time Mark Every 60 S





Casing Collar Locator (CCL)		Strain Gauge Pressure (SGP)	
-19 (----) 1		0 (PSIA) 50	
Gamma Ray (GR)		Temperature (TEMP_MWPT)	
0 (GAPI) 150		0 (DEGF) 20	
CCL From CCL to T1		Tension (TENS)	
Temperature (TEMP_MWPT) (DEGF)		0 (LBF) 3000	
		Pressure (SGPA) (PSIA)	

PIP SUMMARY

Time Mark Every 60 S

Parameters		
DLIS Name	Description	Value
MWPT-CA: MEASUREMENT WHILE PERFORATING TOOL		
DEVI_FL_CORR	Deviation Angle for Flow Line Correction	39 DEG
FLD	Flow Line Density	1 G/C3
MWPT_NULL_SOURCE	MWPT NULL Temperature Source	TEMS
MWPT_NULL_TEMP	MWPT NULL Temperature	0.0 DEGC

Format: MWP Vertical Scale: 1:200 Graphics File Created: 19-Jun-2006 07:34

OP System Version: 14C0-302			
MCM			
MWP_GUN	14C0-302	MWPT-CA	14C0-302
MWGT-AA	14C0-302		

Output DLIS Files			
DEFAULT	PERFO_010LUP	FN:9	PRODUCER 19-Jun-2006 07:34

Company: **Esso Australia Ltd.**

Well: **A27**

Field: **Fortescue**

Rig: **Prod4/Crane**

Country: **Australia**

**Schlumberger**

MWPT / GR  
2 1/8 Powerjet  
6 spf 45deg Phased