

Company: Esso Australia Ltd.

Well: A-15a

Field: Fortescue

Rig : Prod4 / Crane

Country: Australia

Prod4 / Crane
Rig :
Field: Fortescue
Location: Gippsland
Well: A-15a
Company: Esso Australia Ltd.

Sbhp Pressure
Gamma-Ray
Survey

LOCATION		
Gippsland	Elev.:	K.B. 42.9 m
Basin		G.L. -69 m
Bass Strait		D.F. 34 m
Permanent Datum:	M.S.L.	Elev.: 0 m
Log Measured From:	D.F.	34.0 m above Perm. Datum
Drilling Measured From:	D.F.	

State: Victoria	Max. Well Deviation 57 deg	Longitude 148 16'36.62" E	Latitude 038 24'31.49"S
-----------------	----------------------------	---------------------------	-------------------------

Logging Date

Run Number

Depth Driller

Schlumberger Depth

Bottom Log Interval

Top Log Interval

Casing Fluid Type

Salinity

Density

Fluid Level

BIT/CASING/TUBING STRING

Bit Size

From

To

Casing/Tubing Size

Weight

Grade

From

To

Maximum Recorded Temperatures

Logger On Bottom

Unit Number

Recorded By

Witnessed By

PVT DATA

Oil Density	
Water Salinity	
Gas Gravity	
Bo	
Bw	
1/Bg	
Bubble Point Pressure	
Bubble Point Temperature	
Solution GOR	
Maximum Deviation	57 deg

CEMENTING DATA

Primary/Squeeze	Primary
Casing String No	
Lead Cement Type	
Volume	
Density	
Water Loss	
Additives	
Tail Cement Type	
Volume	
Density	
Water Loss	
Additives	

Expected Cement Top

Logging Date

Run Number

Depth Driller

Schlumberger Depth

Bottom Log Interval

Top Log Interval

Casing Fluid Type

Salinity

Density

Fluid Level

BIT/CASING/TUBING STRING

Bit Size

From

To

Casing/Tubing Size

Weight

Grade

From

To

Maximum Recorded Temperatures

Logger On Bottom

Unit Number

Recorded By

Witnessed By

3510	3075	218
------	------	-----

3500	3075	218
3000	2765	196
2000	2155	166
1000	1542	138
0	559	65

Crew : John Light & Jake Annear.

RUN 1

SERVICE ORDER #:
PROGRAM VERSION:

Ausl06297081
14C0-302

LOGGED INTERVAL	START	STOP

EQUIPMENT DESCRIPTION

RUN 1

SURFACE EQUIPMENT

WITM-A
PSC_16MHZ

DOWNHOLE EQUIPMENT

AH-SWBS-B 761

5.59

AH-SWBS-B 762

4.91

AH-SWBS-B 763

4.22

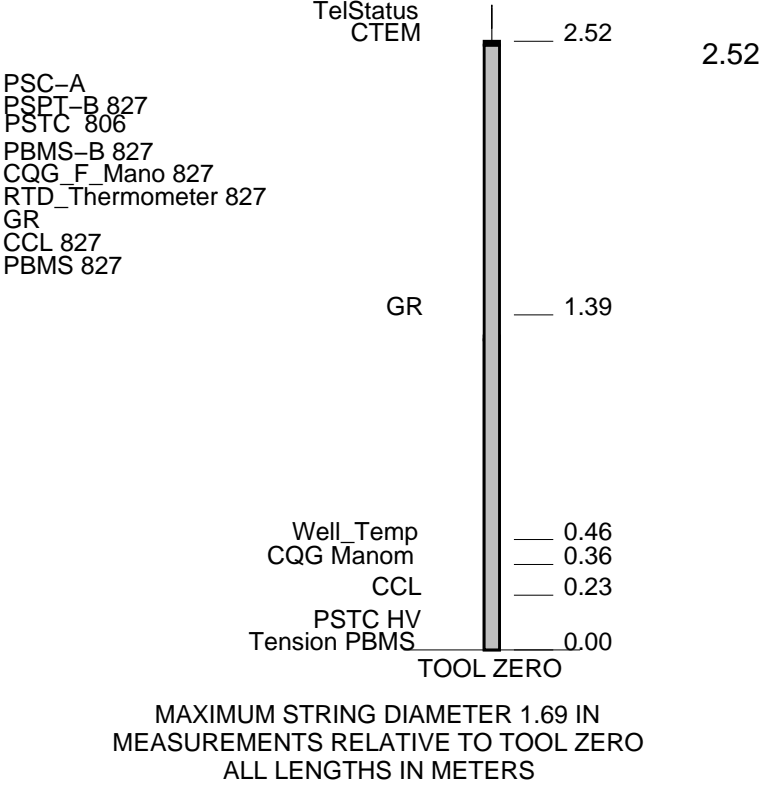
AH-SWBS-B 731

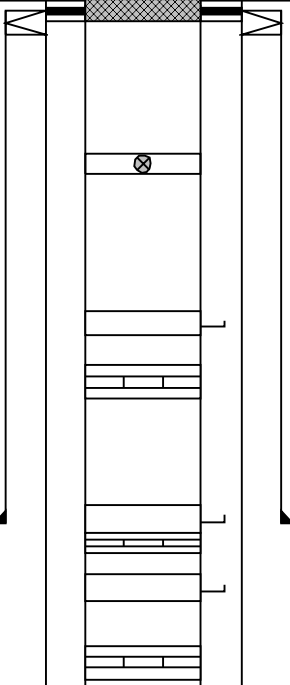
3.54

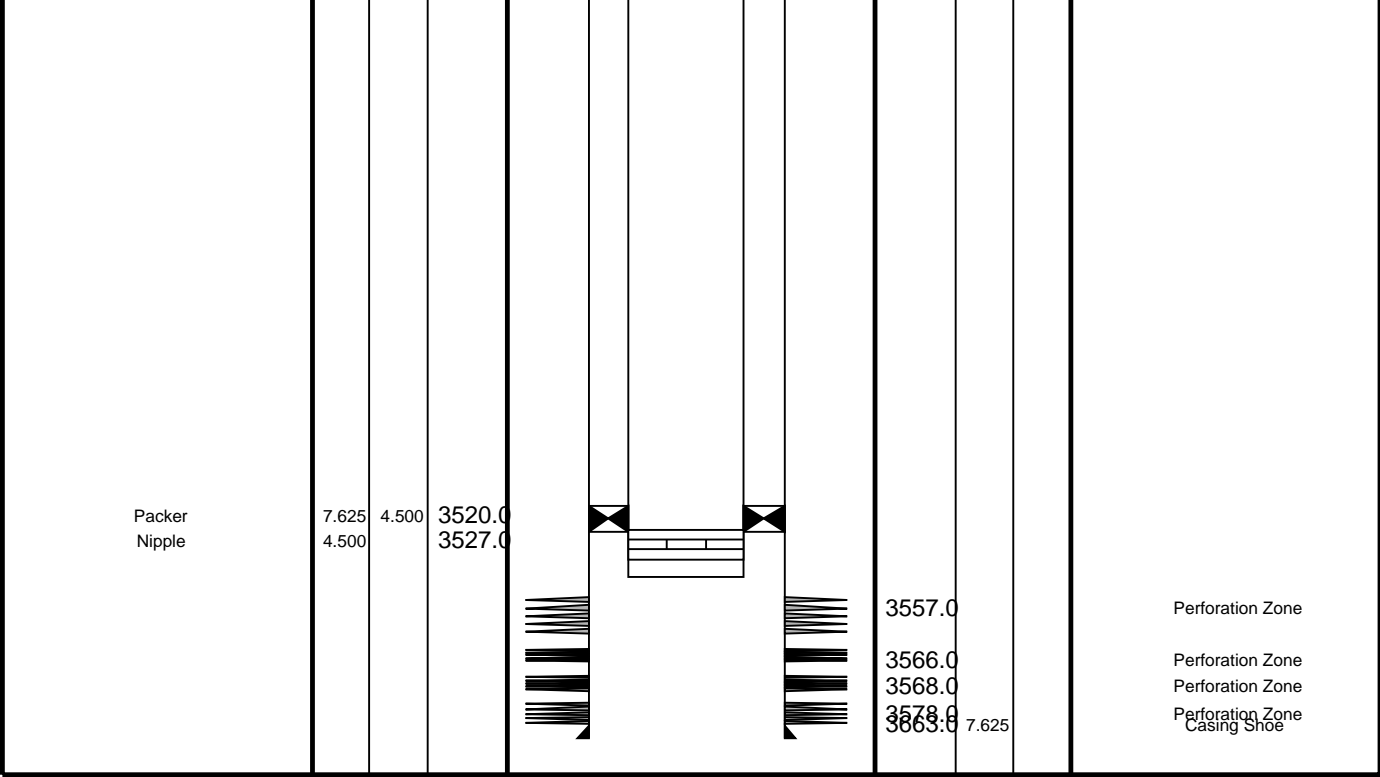
MH-SWHS-A 726

2.85

Detail MT



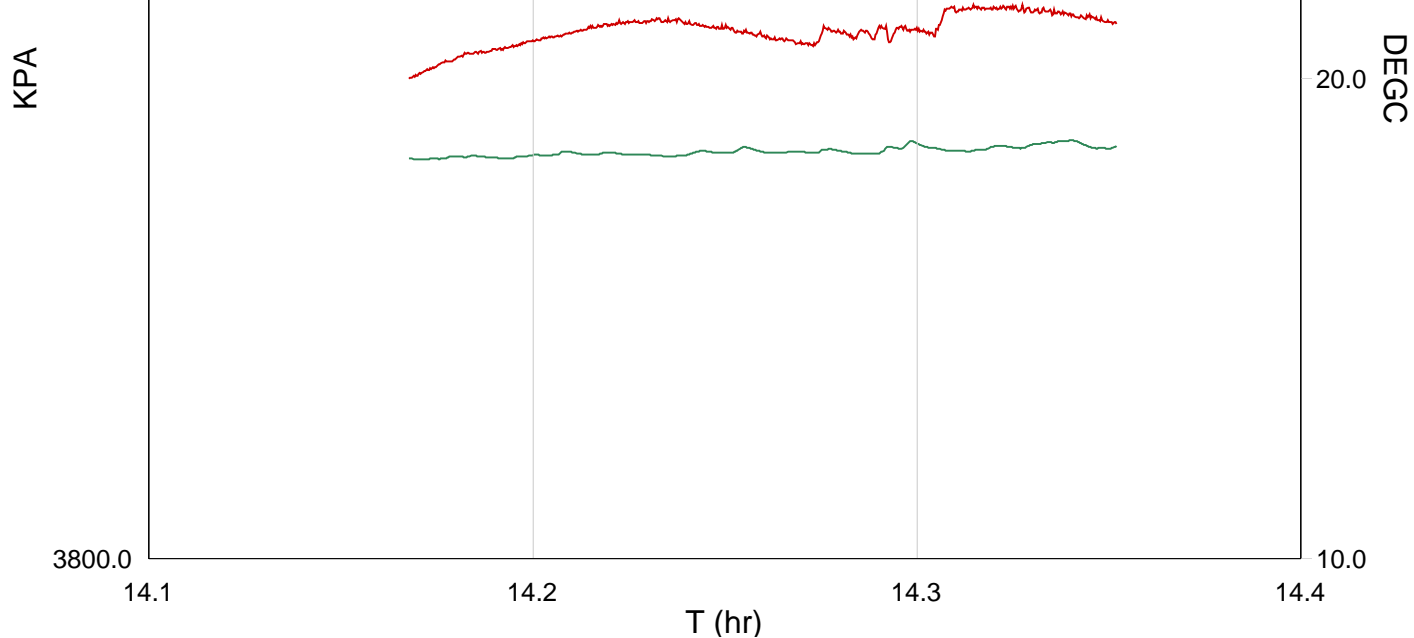
Production String	(in)		(m)	Well Schematic	(m)	(in)		Casing String
	OD	ID	MD		MD	OD	ID	
Tubing Hanger	4.500	4.500	13.7		23.4	7.625	7.625	Casing String Liner Hanger
					23.4	10.750	7.625	
Shutin Valve	4.500		439.0					
Gas Lift Mandrel	4.500		782.0					
Nipple	4.500		798.0					Casing Shoe
Gas Lift Mandrel	4.500		1212.0		1142.2	10.750		
Nipple	4.500		1225.0					
Gas Lift Mandrel	4.500		1373.0					
Nipple	4.500		1389.0					



STATIC STATION
0m MDKB TVD

MAXIS Field Log



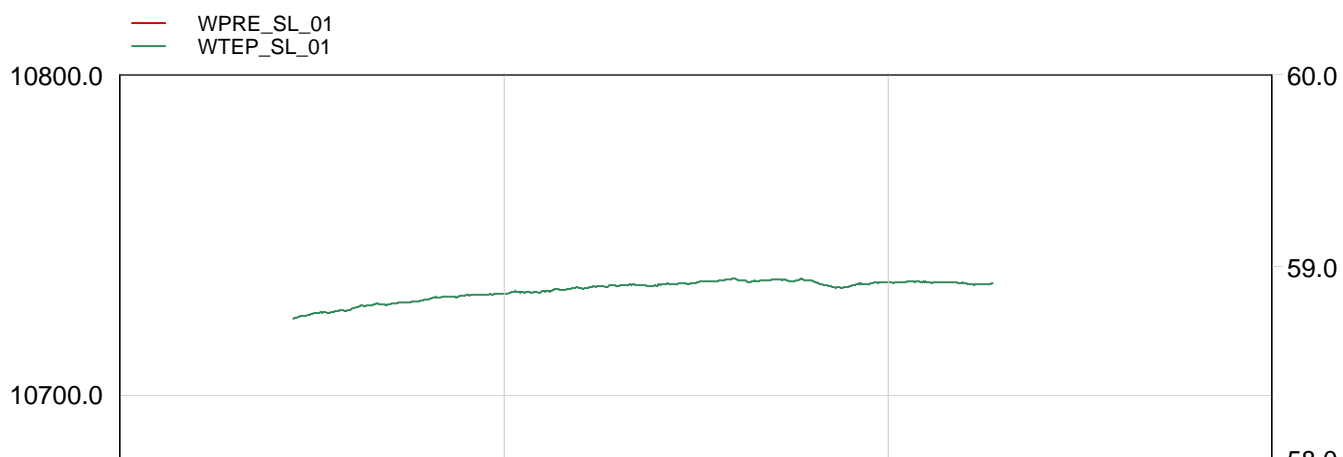


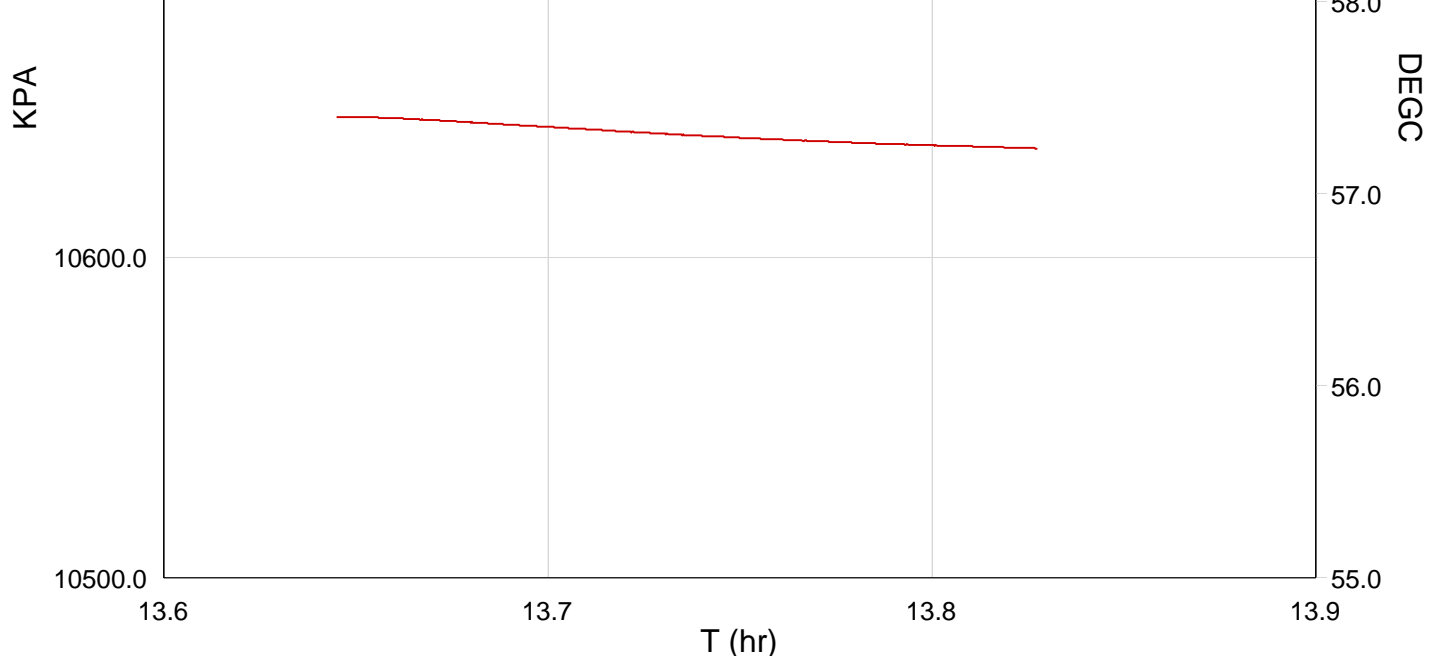
TIME	TOJ	WTEP_SL	WPRE_SL
4080.0000	14.1783	65.0799	558.6591
4200.0000	14.2116	65.1962	559.1094
4320.0000	14.2450	65.2848	559.1920
4440.0000	14.2783	65.3403	559.1243
4560.0000	14.3116	65.2940	559.4313
4680.0000	14.3450	65.4427	559.3632

Schlumberger

STATIC STATION
1000 MDKB 908.6m TVD

MAXIS Field Log



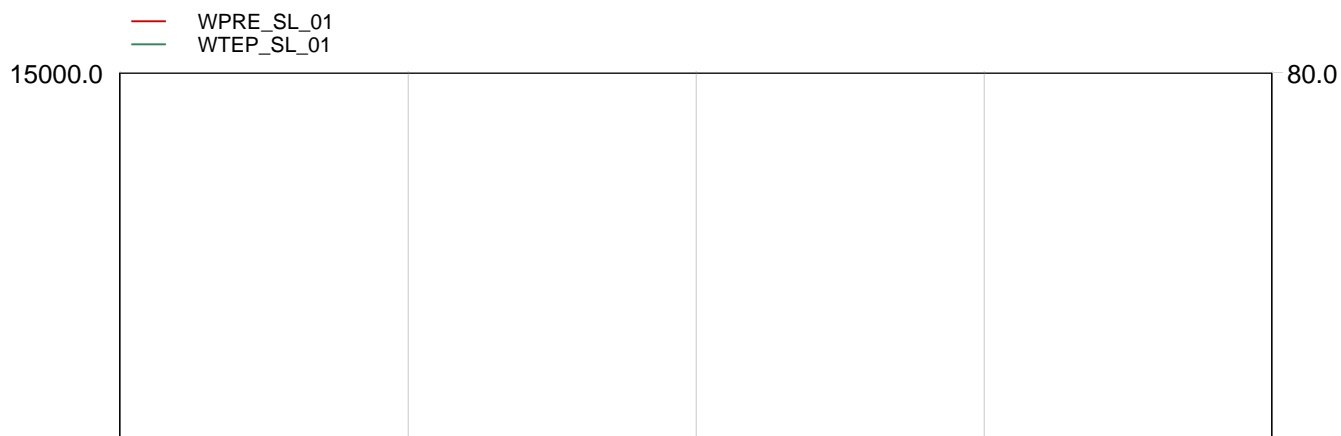


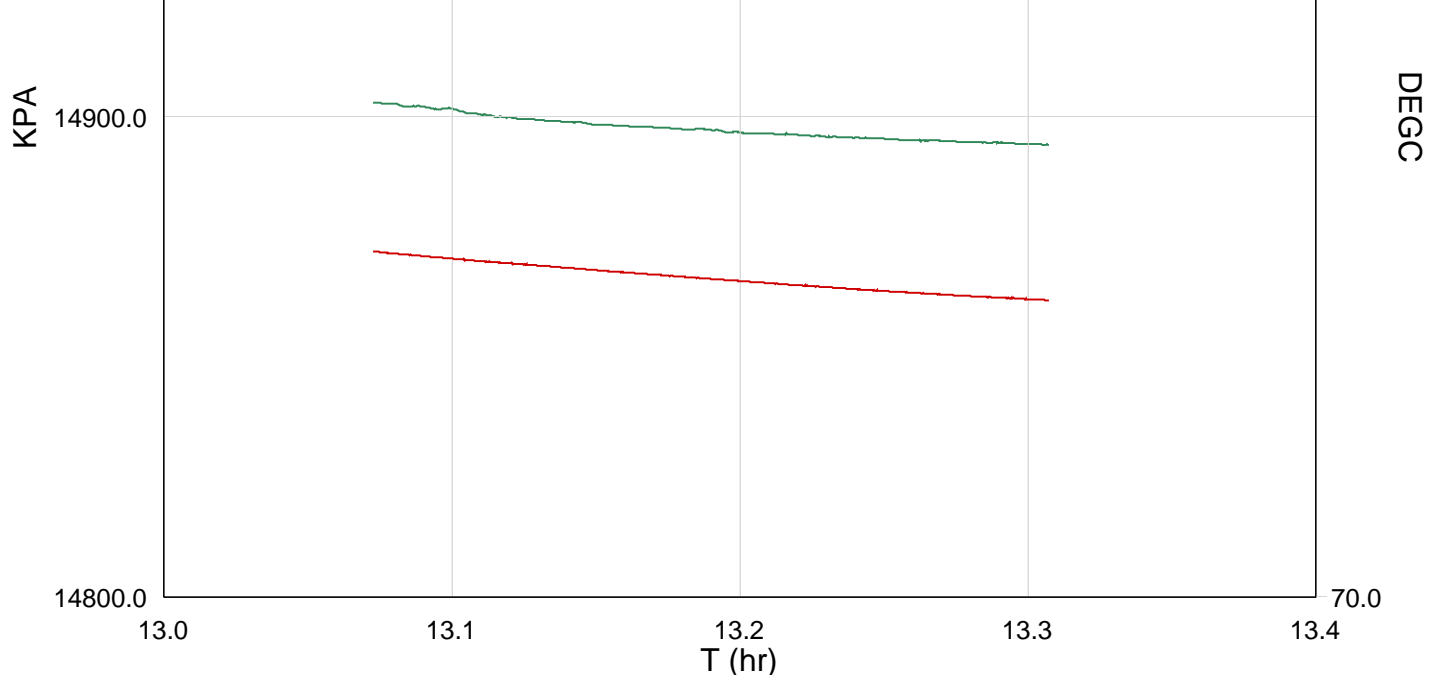
TIME	TOJ	WTEP_SL	WPRE_SL
2160.0000	13.6454	137.7191	1543.7658
2280.0000	13.6787	137.8868	1543.5554
2400.0000	13.7120	137.9707	1543.2156
2520.0000	13.7454	138.0421	1542.8897
2640.0000	13.7787	138.0753	1542.6311
2760.0000	13.8120	138.0549	1542.4398

Schlumberger

STATIC STATION
2000 MDKB 1475.9m TVD

MAXIS Field Log





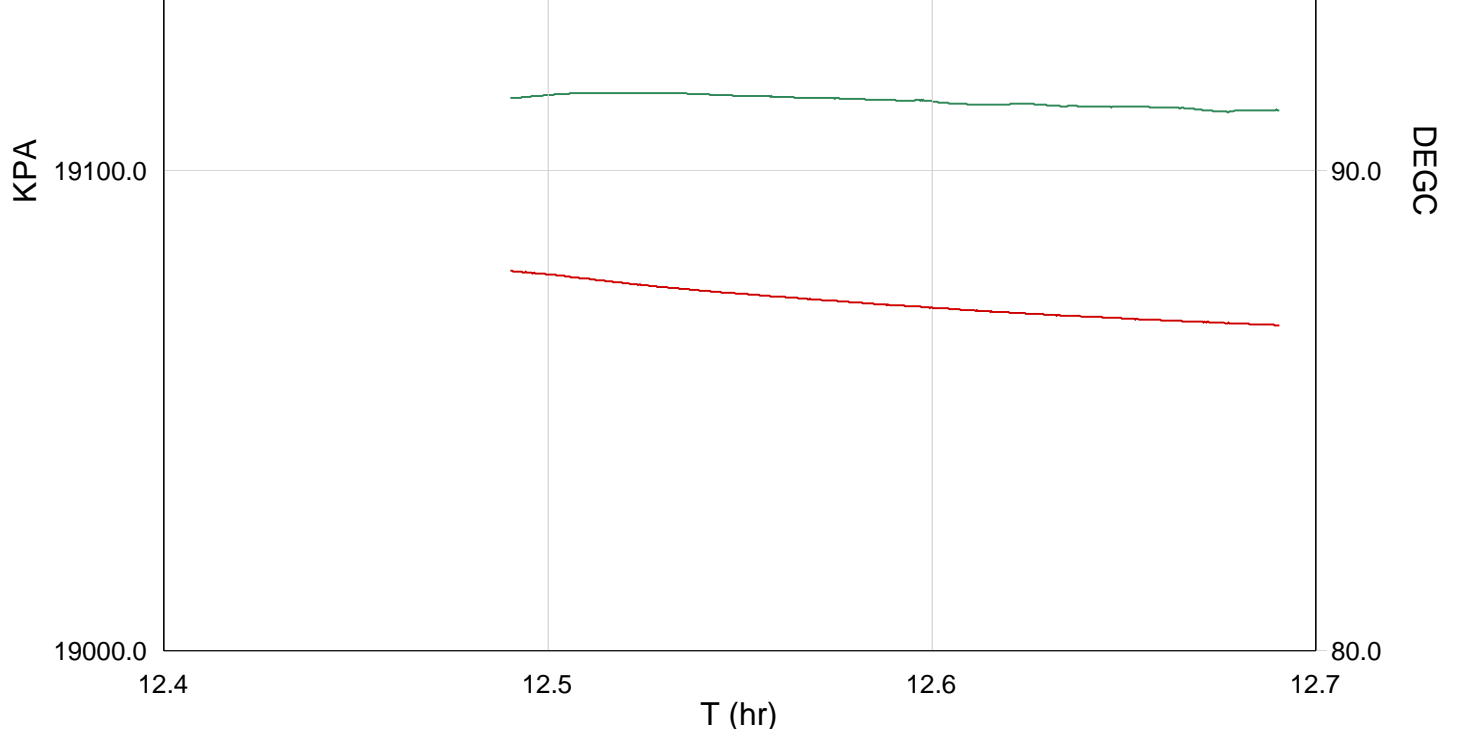
TIME	TOJ	WTEP_SL	WPRE_SL
120.0000	13.0789	167.2515	2156.9508
240.0000	13.1122	167.0443	2156.6888
360.0000	13.1455	166.8981	2156.4691
480.0000	13.1789	166.7863	2156.2479
600.0000	13.2122	166.6797	2156.0285
720.0000	13.2455	166.6031	2155.8378
840.0000	13.2789	166.5322	2155.6612

Schlumberger

STATIC STATION
3000 MDKB 2047.2m TVD

MAXIS Field Log





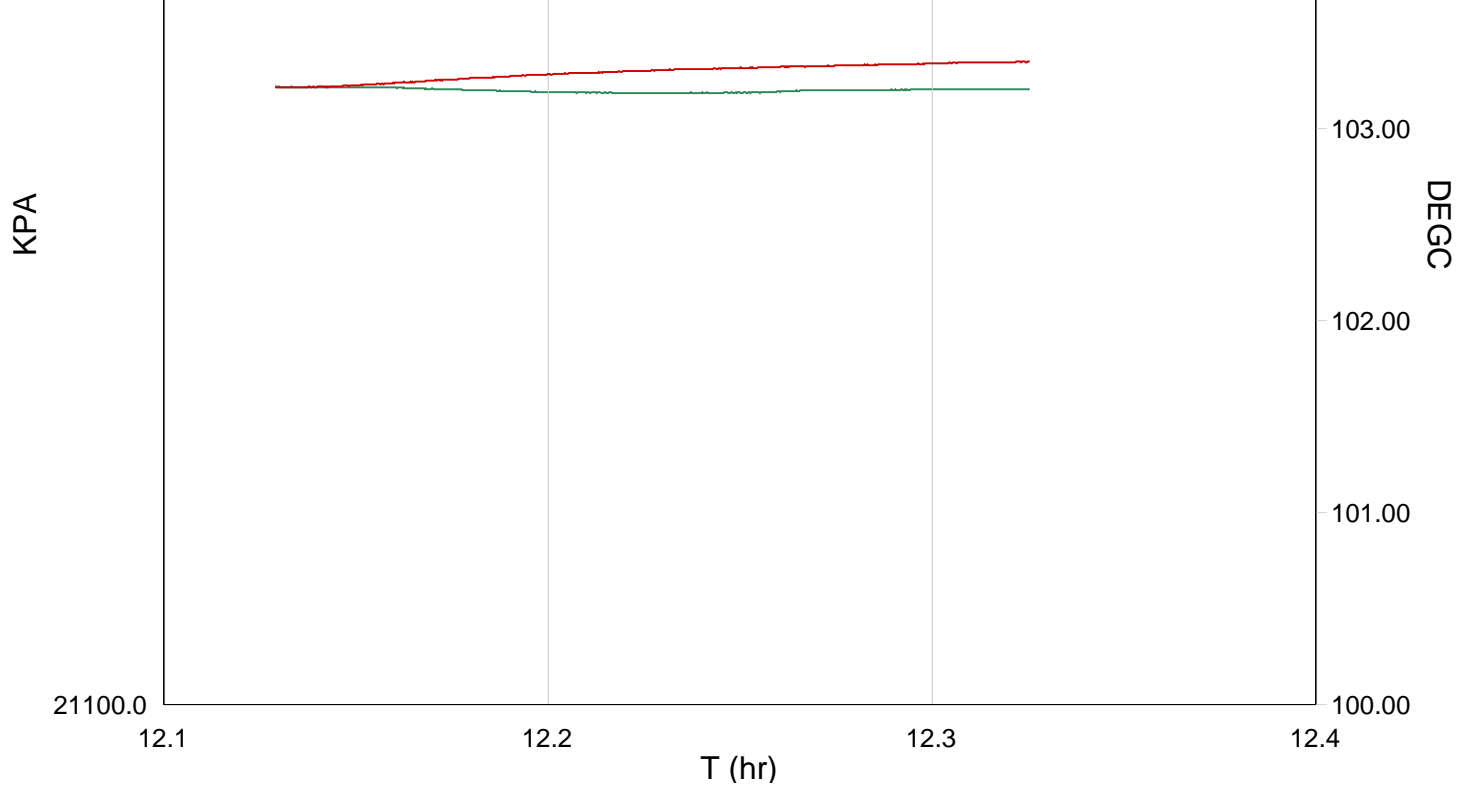
TIME	TOJ	WTEP_SL	WPRE_SL
10080.0000	12.4921	196.6756	2765.7966
10200.0000	12.5178	196.9164	2766.8653
10320.0000	12.5511	196.8145	2766.4976
10440.0000	12.5845	196.6694	2766.2030
10560.0000	12.6178	196.4769	2765.9556
10680.0000	12.6511	196.4040	2765.7546
10800.0000	12.6845	196.2677	2765.5861

Schlumberger

STATIC STATION
3500 MDKB 2336.5m TVD

MAXIS Field Log





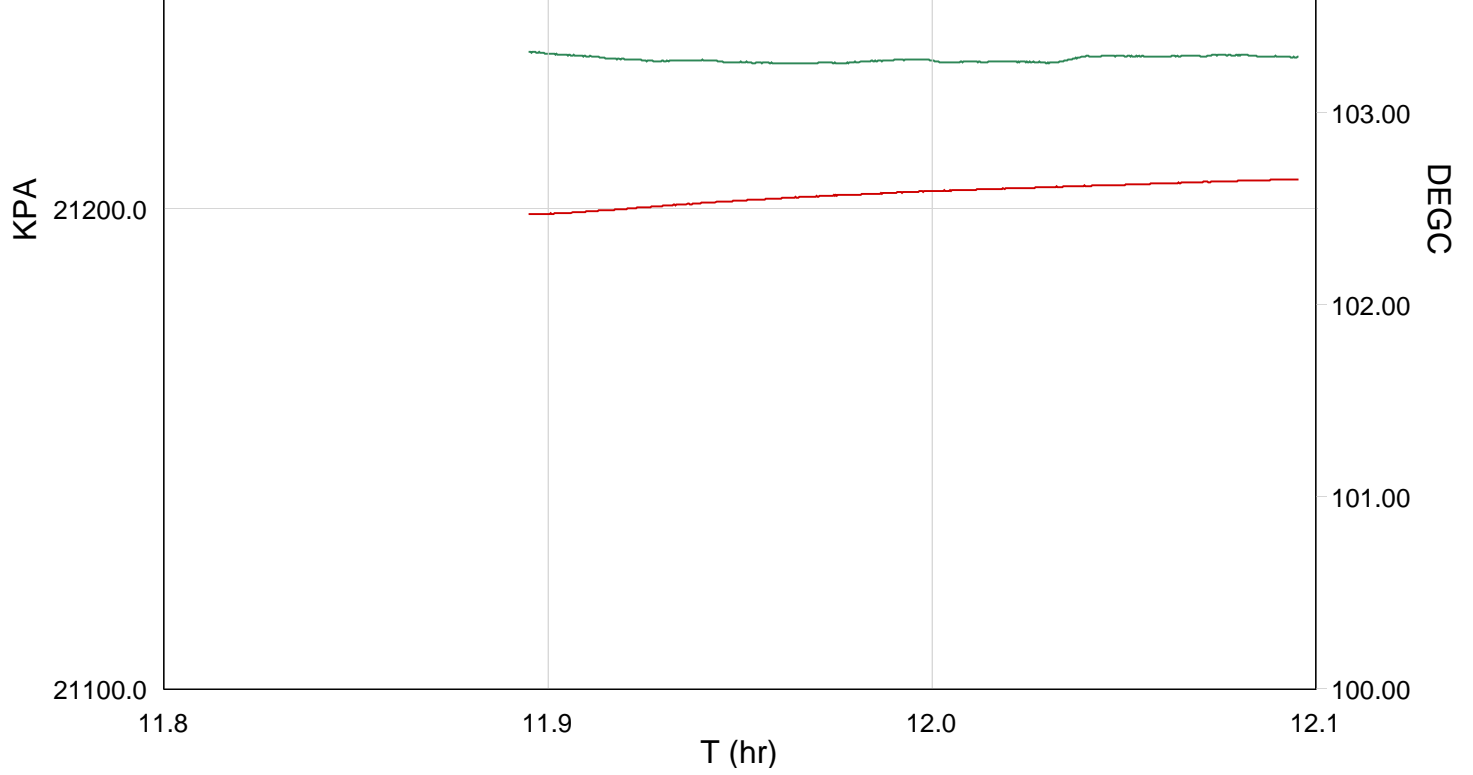
TIME	TOJ	WTEP_SL	WPRE_SL
8760.0000	12.0745	216.8160	3055.8680
8880.0000	12.1513	217.7897	3069.6549
9000.0000	12.1846	217.7588	3069.7702
9120.0000	12.2179	217.7340	3069.8593
9240.0000	12.2513	217.7387	3069.9120
9360.0000	12.2846	217.7615	3069.9603
9480.0000	12.3179	217.7685	3069.9996

Schlumberger

STATIC STATION
3510 MDKB 2342.3m TVD

MAXIS Field Log





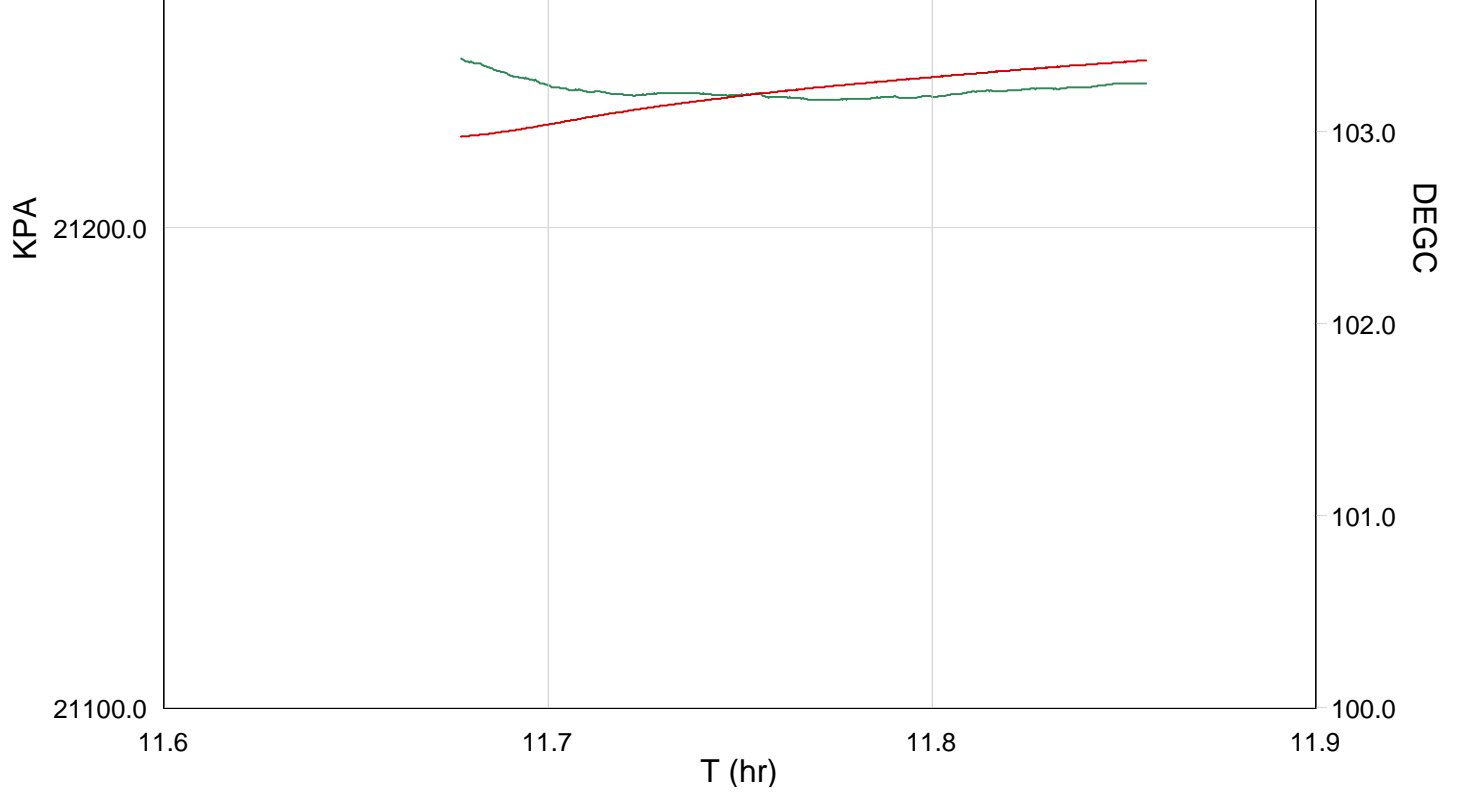
TIME	TOJ	WTEP_SL	WPRE_SL
7920.0000	11.8387	216.9430	3060.0936
8040.0000	11.9179	217.9092	3074.7926
8160.0000	11.9512	217.8805	3075.0676
8280.0000	11.9845	217.8910	3075.2701
8400.0000	12.0179	217.8845	3075.4202
8520.0000	12.0512	217.9361	3075.5482
8640.0000	12.0845	217.9368	3075.6754

Schlumberger

STATIC STATION
3520 MDKB 2348.1m TVD

MAXIS Field Log





TIME	TOJ	WTEP_SL	WPRE_SL
7200.0000	11.6849	218.0084	3077.6614
7320.0000	11.7182	217.7560	3078.3054
7440.0000	11.7516	217.7563	3078.8244
7560.0000	11.7849	217.7229	3079.2143
7680.0000	11.8182	217.7882	3079.5542
7800.0000	11.8516	217.8599	3079.8421

Schlumberger

Correlation Pass

MAXIS Field Log

Input DLIS Files

DEFAULT	PSP_014LUP	FN:13	PRODUCER	09-Jun-2006 11:32	3520.3 M	3472.1 M
---------	------------	-------	----------	-------------------	----------	----------

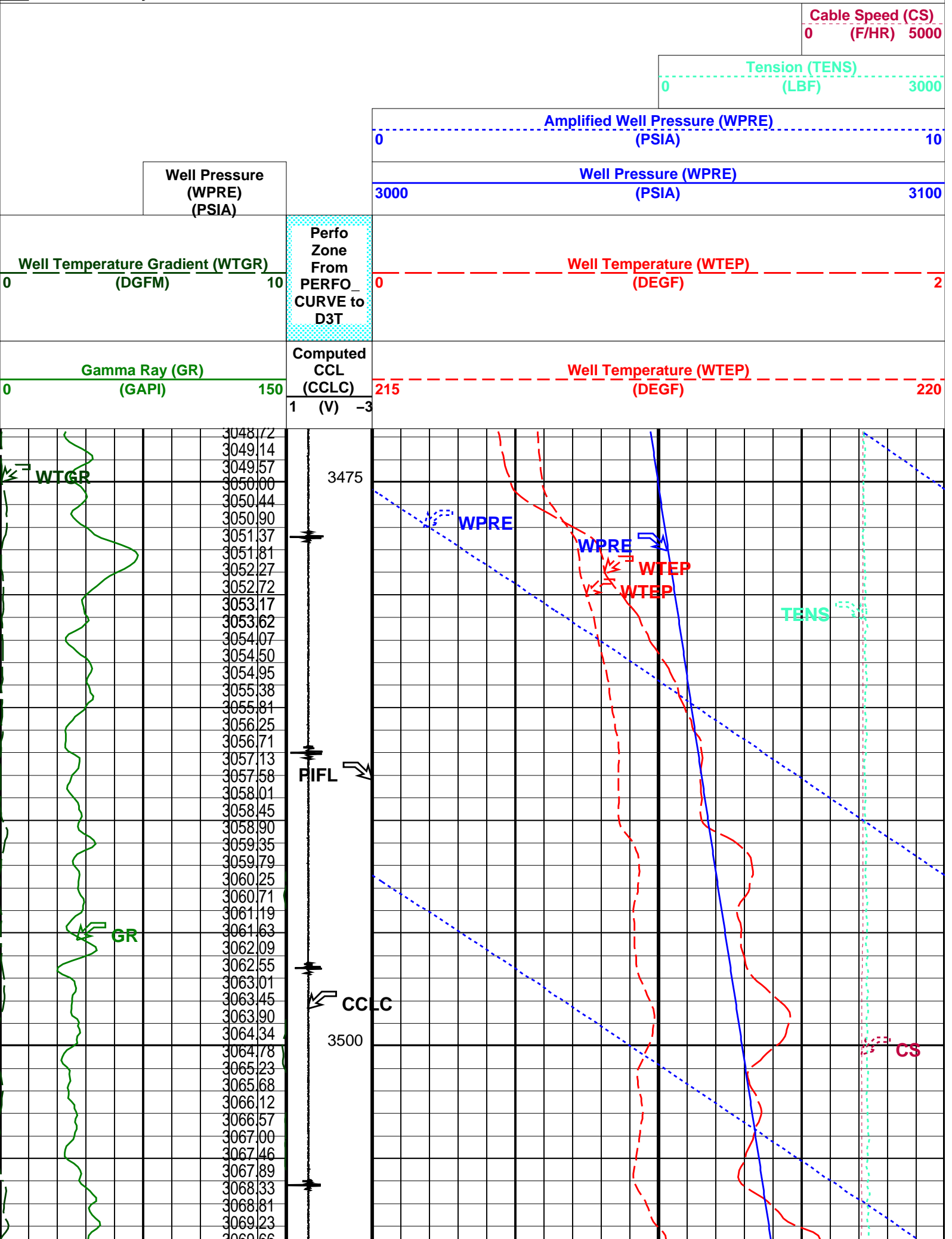
Output DLIS Files

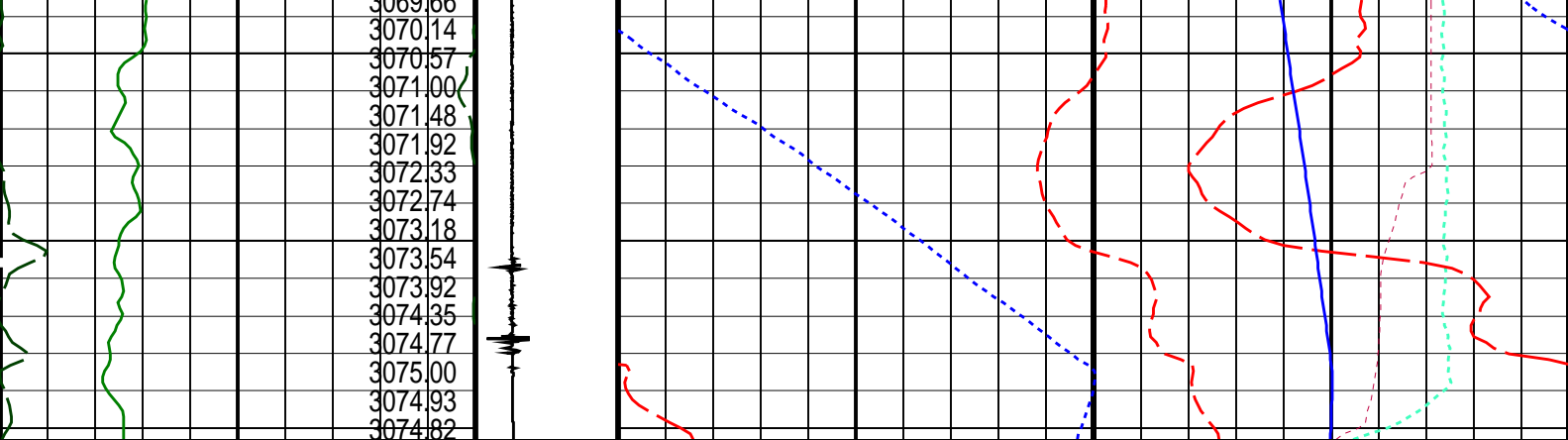
DEFAULT	PSP_026PUP	FN:25	PRODUCER	09-Jun-2006 15:42	3520.3 M	3472.6 M
---------	------------	-------	----------	-------------------	----------	----------

OP System Version: 14C0-302
MCM

PSPT-A/B 14C0-302

PIP SUMMARY





Gamma Ray (GR) (GAPI)		0	150	Computed CCL (CCLC) 1 (V) -3	Well Temperature (WTEP) (DEGF)		215	220
Well Temperature Gradient (WTGR) (DGFM)		0	10		Well Temperature (WTEP) (DEGF)		0	2
Well Pressure (WPRE) (PSIA)		Well Pressure (WPRE) (PSIA)		Perfo Zone From PERFO_ CURVE to D3T	Well Pressure (WPRE) (PSIA)		3000	3100
		Amplified Well Pressure (WPRE) (PSIA)			Amplified Well Pressure (WPRE) (PSIA)		0	10
		Tension (TENS) (LBF)			Tension (TENS) (LBF)		0	3000
		Cable Speed (CS) (F/HR)			Cable Speed (CS) (F/HR)		0	5000

PIP SUMMARY

Time Mark Every 60 S

Format: PSP_1 Vertical Scale: 1:200 Graphics File Created: 09-Jun-2006 15:42

OP System Version: 14C0-302
MCM
PSPT-A/B 14C0-302

Parameters		
DLIS Name	Description	Value
DO	System and Miscellaneous	
PP	Depth Offset for Playback	0.0 M
	Playback Processing	NORMAL

Input DLIS Files						
DEFAULT	PSP_014LUP	FN:13	PRODUCER	09-Jun-2006 11:32	3520.3 M	3472.1 M
Output DLIS Files						
DEFAULT	PSP_026PUP	FN:25	PRODUCER	09-Jun-2006 15:42		



Correlation Pass
Side Pocket Mandrel 1373.8m MDKB

Input DLIS Files

DEFAULT PSP_011LUP FN:10 PRODUCER 09-Jun-2006 11:01 1397.5 M 1347.5 M

Output DLIS Files

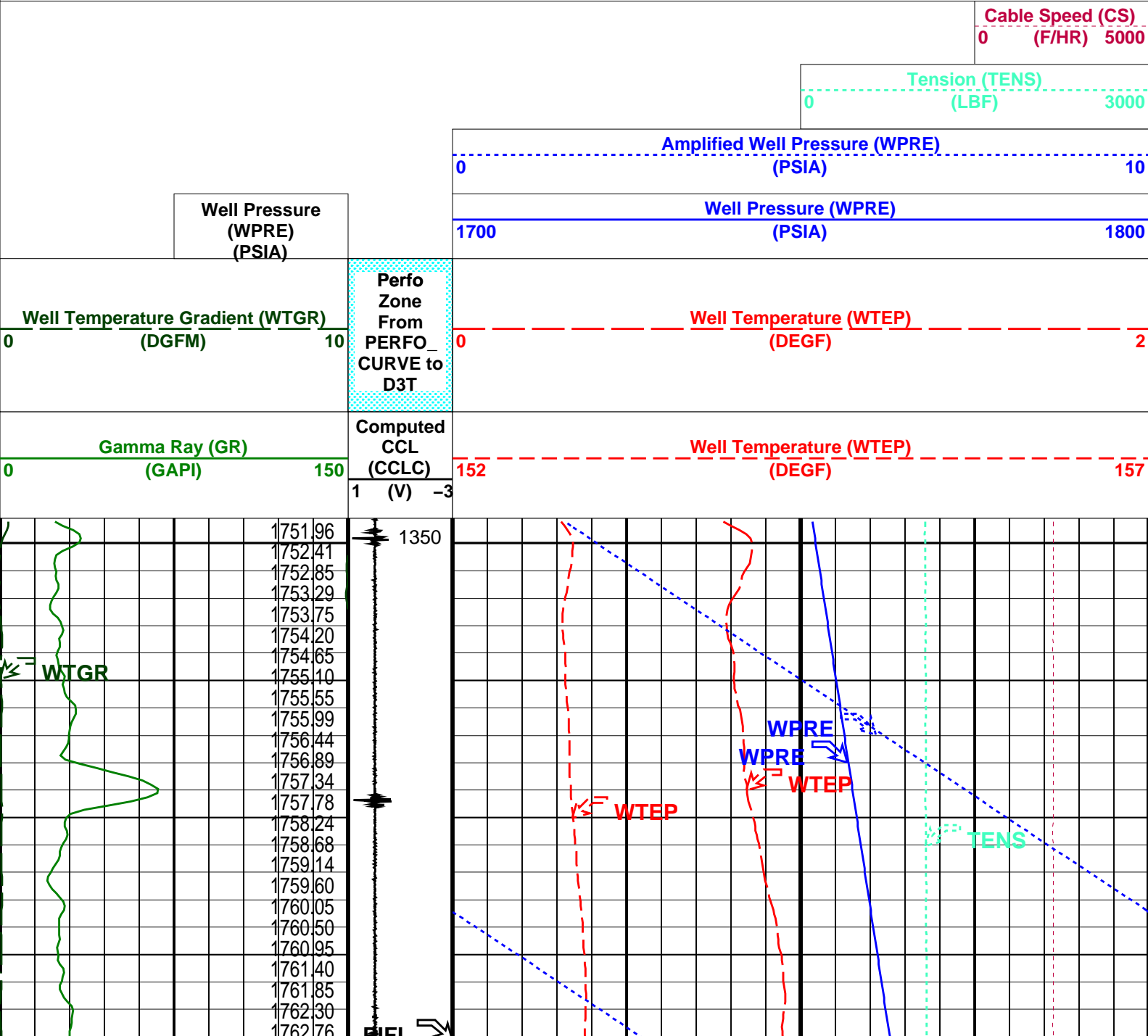
DEFAULT PSP_025PUP FN:24 PRODUCER 09-Jun-2006 15:39 1398.6 M 1349.0 M

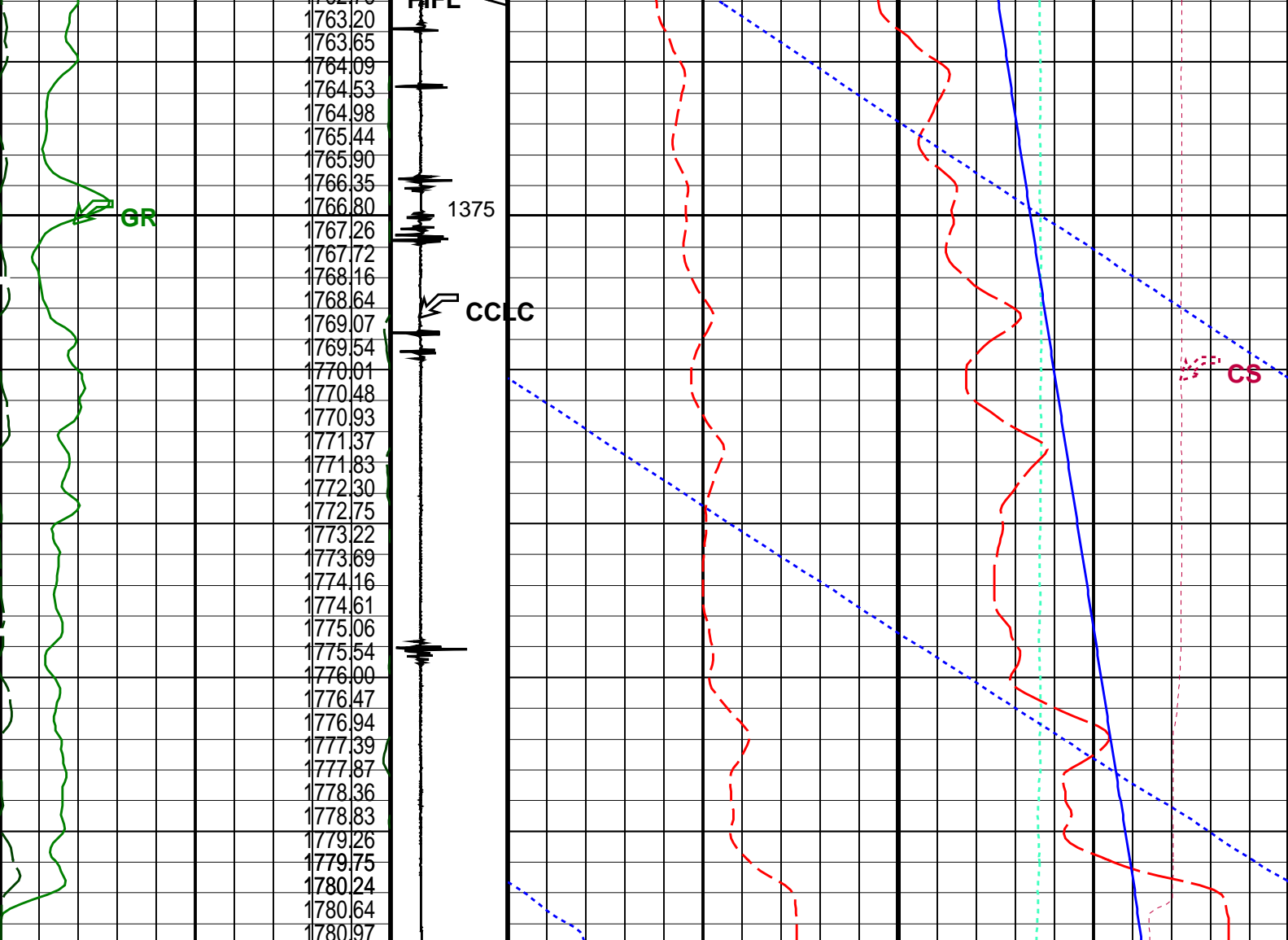
OP System Version: 14C0-302
MCM

PSPT-A/B 14C0-302

PIP SUMMARY

Time Mark Every 60 S





Gamma Ray (GR) (GAPI)		0	150
Well Temperature Gradient (WTGR) (DGFM)		0	10
Well Pressure (WPRE) (PSIA)		1700	1800
Amplified Well Pressure (WPRE) (PSIA)		0	10
Tension (TENS) (LBF)		0	3000
Cable Speed (CS) (F/HR)		0	5000

PIP SUMMARY

Time Mark Every 60 S

Format: PSP_1 Vertical Scale: 1:200 Graphics File Created: 09-Jun-2006 15:39

OP System Version: 14C0-302
MCM

PSPT A/B 14C0-302

Parameters

DLIS Name	Description	Value
DO	System and Miscellaneous	1.0 M
PP	Depth Offset for Playback Playback Processing	NORMAL

Input DLIS Files

DEFAULT	PSP_011LUP	FN:10	PRODUCER	09-Jun-2006 11:01	1397.5 M	1347.5 M
---------	------------	-------	----------	-------------------	----------	----------

Output DLIS Files

DEFAULT	PSP_025PUP	FN:24	PRODUCER	09-Jun-2006 15:39
---------	------------	-------	----------	-------------------

Company: **Esso Australia Ltd.****Schlumberger**Well: **A-15a**Field: **Fortescue**Rig : **Prod4 / Crane**Country: **Australia**

Sbhp Pressure
Gamma-Ray
Survey