

Company: Esso Australia Ltd.

Well: A -1a

Field: Halibut

Rig : Prod4 / Vea

Country: Australia

PSP-GR-CCl
Pressure & Temperature
Survey

Prod4 / Vea
Halibut
Gippsland
A -1a
Esso Australia Ltd.

LOCATION		Elev.: G.L. -59 m D.F. 29.45 m	
Gippsland	Permanent Datum: M.S.L. Log Measured From: D.F. Drilling Measured From: D.F.		
Basin			
Bass Strait			
State: Victoria	Max. Well Deviation 66 deg	Longitude 148 19'07.62" E	Latitude 038 24'20.36" S

Logging Date	16-Apr-2006		
Run Number	1		
Depth Driller	2782 m		
Schlumberger Depth	2781.5 m		
Bottom Log Interval	2781.5 m		
Top Log Interval	2600 m		
Casing Fluid Type	Production Fluids		
Salinity			
Density			
Fluid Level			
BIT/CASING/TUBING STRING			
Bit Size	8.000 in		
From			
To			
Casing/Tubing Size	7.000 in		
Weight	26 lbn/ft		
Grade	L-80		
From	12.6 m		
To	2962 m		
Maximum Recorded Temperatures	224 degf		
Logger On Bottom	16-Apr-2006		8:00
Unit Number	LEE001	Prod4 / Vea	
Recorded By	G Wright		
Witnessed By	B White		

PVT DATA			Run 1
Oil Density			
Water Salinity			
Gas Gravity			
Bo			
Bw			
1/Bg			
Bubble Point Pressure			
Bubble Point Temperature			
Solution GOR			
Maximum Deviation	66 deg		
CEMENTING DATA			
Primary/Squeeze	Primary		
Casing String No			
Lead Cement Type			
Volume			
Density			
Water Loss			
Additives			
Tail Cement Type			
Volume			
Density			
Water Loss			
Additives			
Expected Cement Top			
Logging Date			
Run Number			
Depth Driller			
Schlumberger Depth			
Bottom Log Interval			
Top Log Interval			
Casing Fluid Type			
Salinity			
Density			
Fluid Level			
BIT/CASING/TUBING STRING			
Bit Size			
From			
To			
Casing/Tubing Size			
Weight			
Grade			
From			
To			
Maximum Recorded Temperatures			
Logger On Bottom			
Unit Number			
Recorded By			
Witnessed By			

DEPTH SUMMARY LISTING

Date Created: 16-APR-2006 8:45:18

Depth System Equipment

Depth Measuring Device	Tension Device	Logging Cable
Type: IDW-H Serial Number: 797 Calibration Date: 12-NOV-2005 Calibrator Serial Number: 24 Calibration Cable Type: 7-46P Wheel Correction 1: 1 Wheel Correction 2: 1	Type: CMTD-C Serial Number: 1037 Calibration Date: 10-JAN-2006 Calibrator Serial Number: 24 Calibration Gain: 1.368 Calibration Offset: 635	Type: 2-23ZT Serial Number: 22327 Length: 5049.93 M Conveyance Method: Wireline Rig Type: OFFSHORE

Depth Control Parameters

Log Sequence:	First Log In the Well
Rig Up Length At Surface:	-7 M
Rig Up Length At Bottom:	3 M
Rig Up Length Correction:	3.7 M

Depth Control Remarks

1. 3.7 mtrs depth offset added to survey
2.
3.
4.
5.
6.

DISCLAIMER

THE USE OF AND RELIANCE UPON THIS RECORDED-DATA BY THE HEREIN NAMED COMPANY (AND ANY OF ITS AFFILIATES, PARTNERS, REPRESENTATIVES, AGENTS, CONSULTANTS AND EMPLOYEES) IS SUBJECT TO THE TERMS AND CONDITIONS AGREED UPON BETWEEN SCHLUMBERGER AND THE COMPANY, INCLUDING: (a) RESTRICTIONS ON USE OF THE RECORDED-DATA; (b) DISCLAIMERS AND WAIVERS OF WARRANTIES AND REPRESENTATIONS REGARDING COMPANY'S USE OF AND RELIANCE UPON THE RECORDED-DATA; AND (c) CUSTOMER'S FULL AND SOLE RESPONSIBILITY FOR ANY INFERENCE DRAWN OR DECISION MADE IN CONNECTION WITH THE USE OF THIS RECORDED-DATA.

OTHER SERVICES1 OS1: None OS2: OS3: OS4: OS5:
--






REMARKS: RUN NUMBER 1
Log correlated to ExxonMobil Petrophysical Analysis log dated 13-Jul-2005.
Maximum well deviation = 66 degrees at 2909m MDKB.
HUD was tagged at 2777m MDKB.
SBHT = 224 degf.
SBHP = 3234 psia.
PLT logging was postponed due to sand in the wellbore and platform

PLT logging was postponed due to sand in the wellbore and platform problems with compressors (no gas lift available).

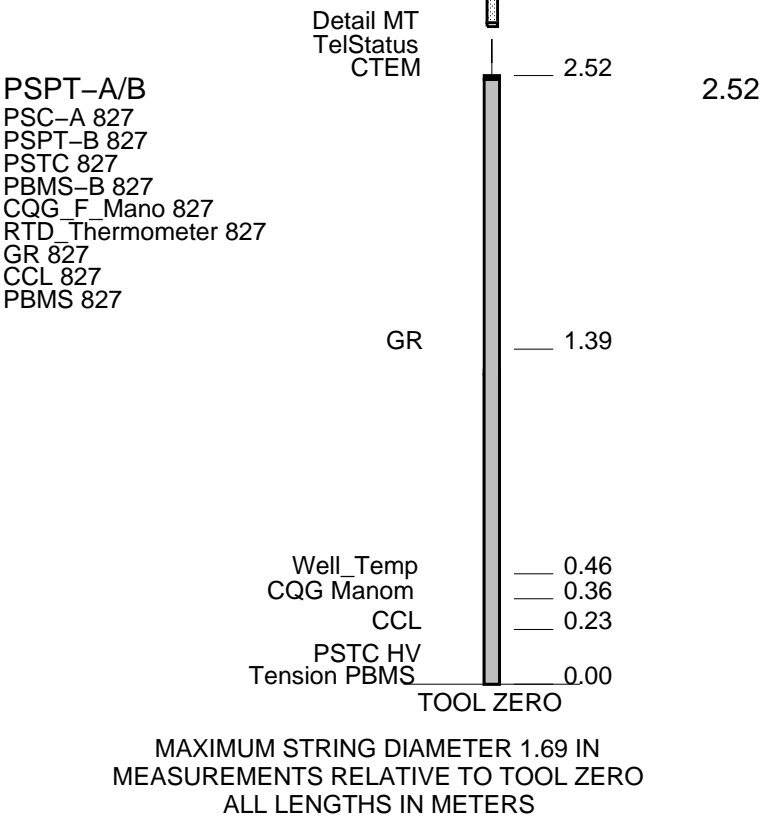
Crew : John Light & Luke Dooley.

RUN 1			
SERVICE ORDER #:		AusI06103808	
PROGRAM VERSION:		14C0-302	
FLUID LEVEL:			
LOGGED INTERVAL	START	STOP	

EQUIPMENT DESCRIPTION

RUN 1			
SURFACE EQUIPMENT			
WITM-A PSC_16MHZ 827			
DOWNHOLE EQUIPMENT			
AH-SWBS AH-SWBS 762		5.59	
AH-SWBS AH-SWBS 731		4.91	
AH-SWBS AH-SWBS 761		4.22	
AH-SWBS AH-SWBS 763		3.54	
MH-SWHS		2.85	

MH-SWHS 726



Client: Esso

Well: A1a

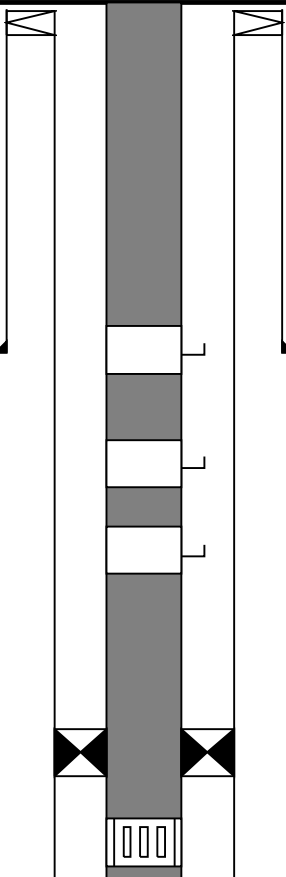
Field: Halibut

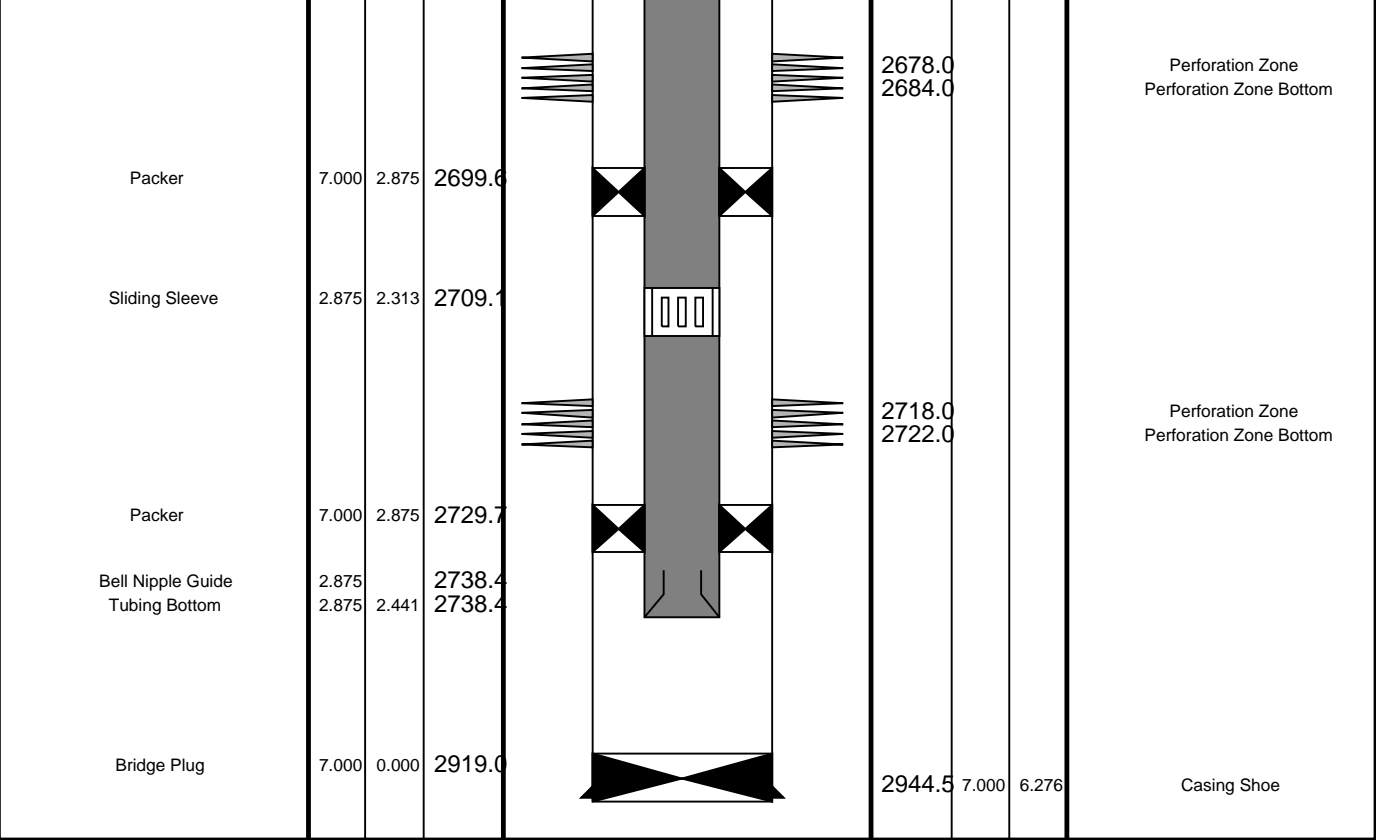
State: Victoria

Country: Australia

Elevation: 29.8 m

4/14/2006

Production String	(in)		(m)	Well Schematic	(m)	(in)		Casing String
	OD	ID	MD		MD	OD	ID	
Tubing, 9.5 lbs/ft, 13Cr	2.875	2.441	0.0		12.0 13.0 13.0	10.750 7.000 10.750	10.050 6.276 7.000	Casing String, 40.5 lbs/ft, J-55 Casing String, 38.8 lbs/ft, L-80 Liner Hanger
Gas Lift Mandrel	2.875	2.441	720.5		615.7	10.750	10.050	Casing Shoe
Gas Lift Mandrel	2.875	2.441	1288.5					
Gas Lift Mandrel	2.875	2.441	1605.8					
Packer	7.000	2.875	2649.3					
Sliding Sleeve	2.875	2.313	2658.8					



Schlumberger Job Event Summary

Time	Elapsed Time	Depth (M)	File
Simulated Log	16-Apr-2006 6:53	000:16	PSP_017LUP
Log Pass (down)	16-Apr-2006 7:19	000:31	-9.3 - 2786.6 PSP_018LDP
Log Pass (up)	16-Apr-2006 7:51	000:22	2786.6 - 2592.0 PSP_019LUP
Log Pass (up)	16-Apr-2006 8:30	000:10	716.7 - 12.3 PSP_021LUP



Gamma-Ray Survey
2781m to 2600m MDKB

MAXIS Field Log

Input DLIS Files

DEFAULT	PSP_019LUP	FN:18	PRODUCER	16-Apr-2006 07:51	2786.6 M	2592.0 M
---------	------------	-------	----------	-------------------	----------	----------

Output DLIS Files

DEFAULT	PSP_022PUP	FN:21	PRODUCER	16-Apr-2006 08:41	2790.3 M	2593.5 M
---------	------------	-------	----------	-------------------	----------	----------

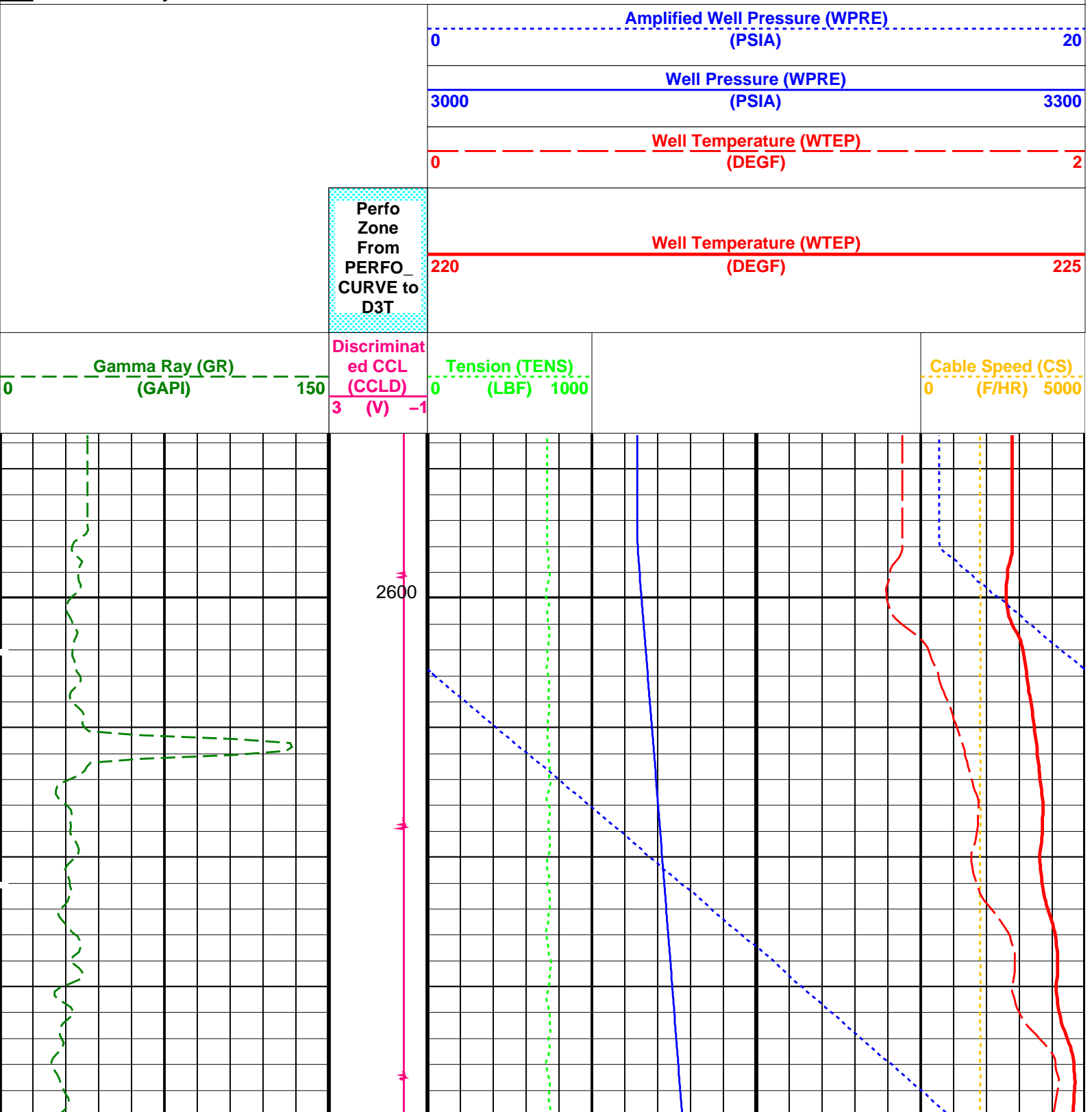
OP System Version: 14C0-302

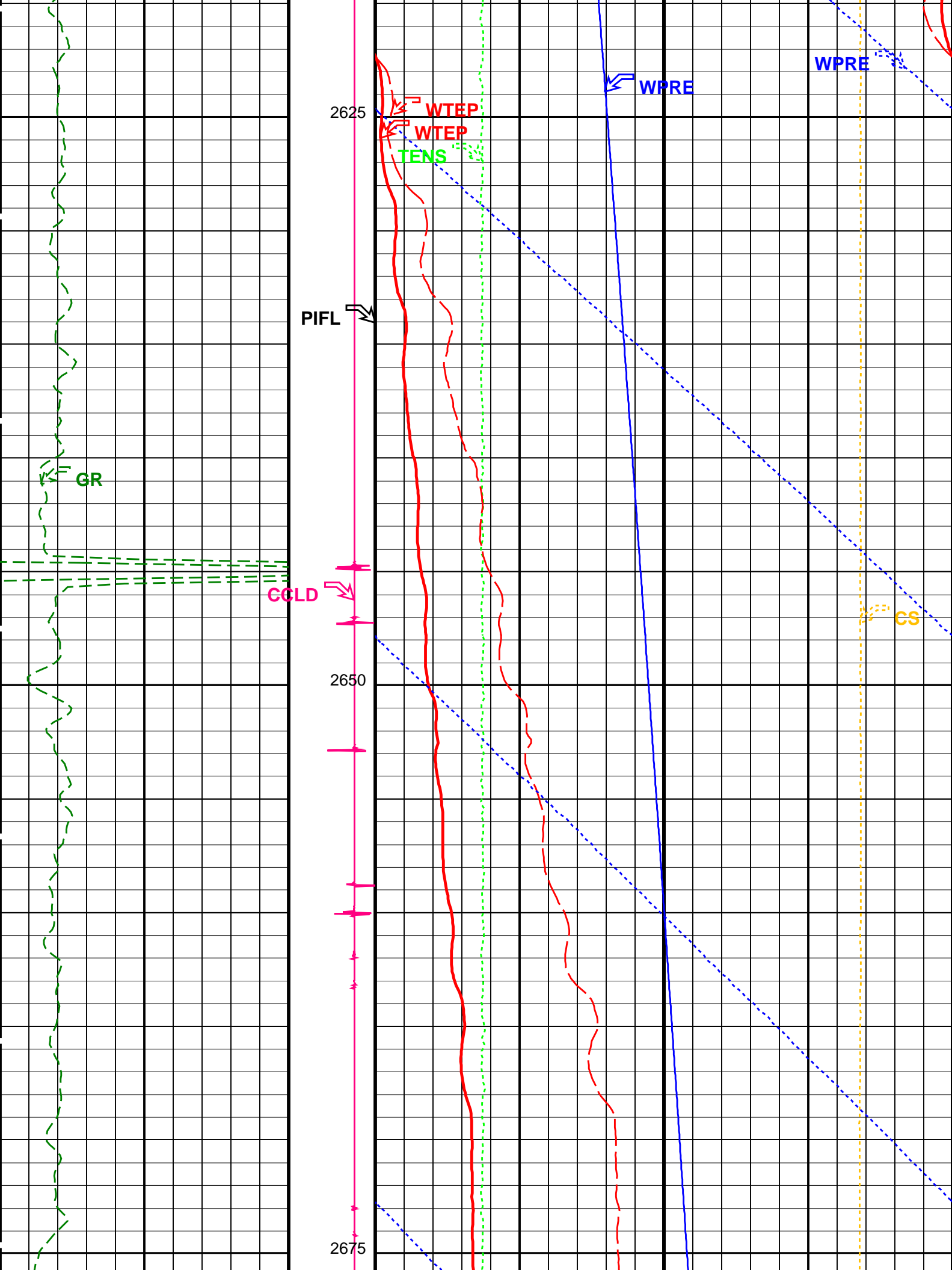
MCM

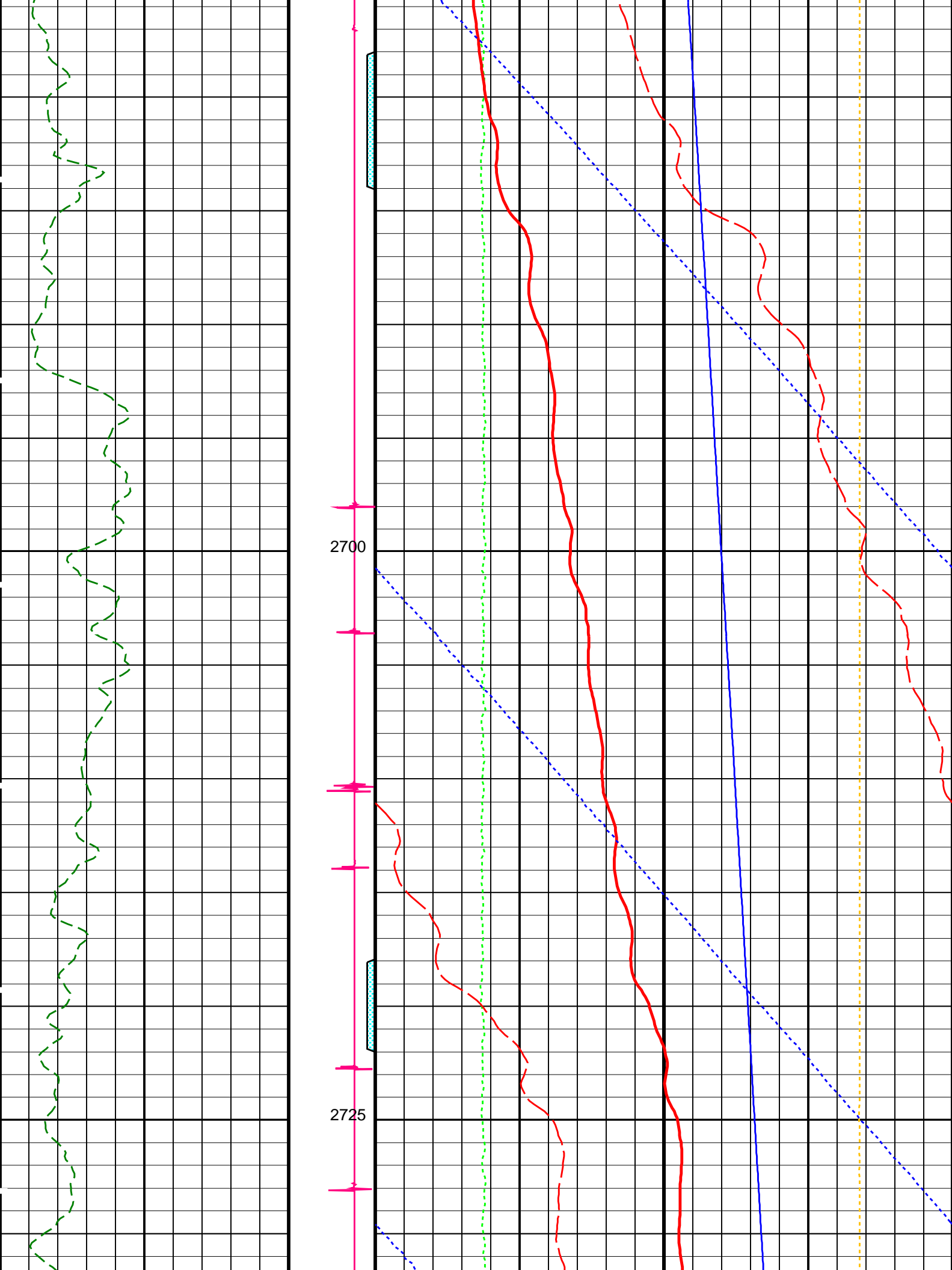
PSPT-A/B 14C0-302

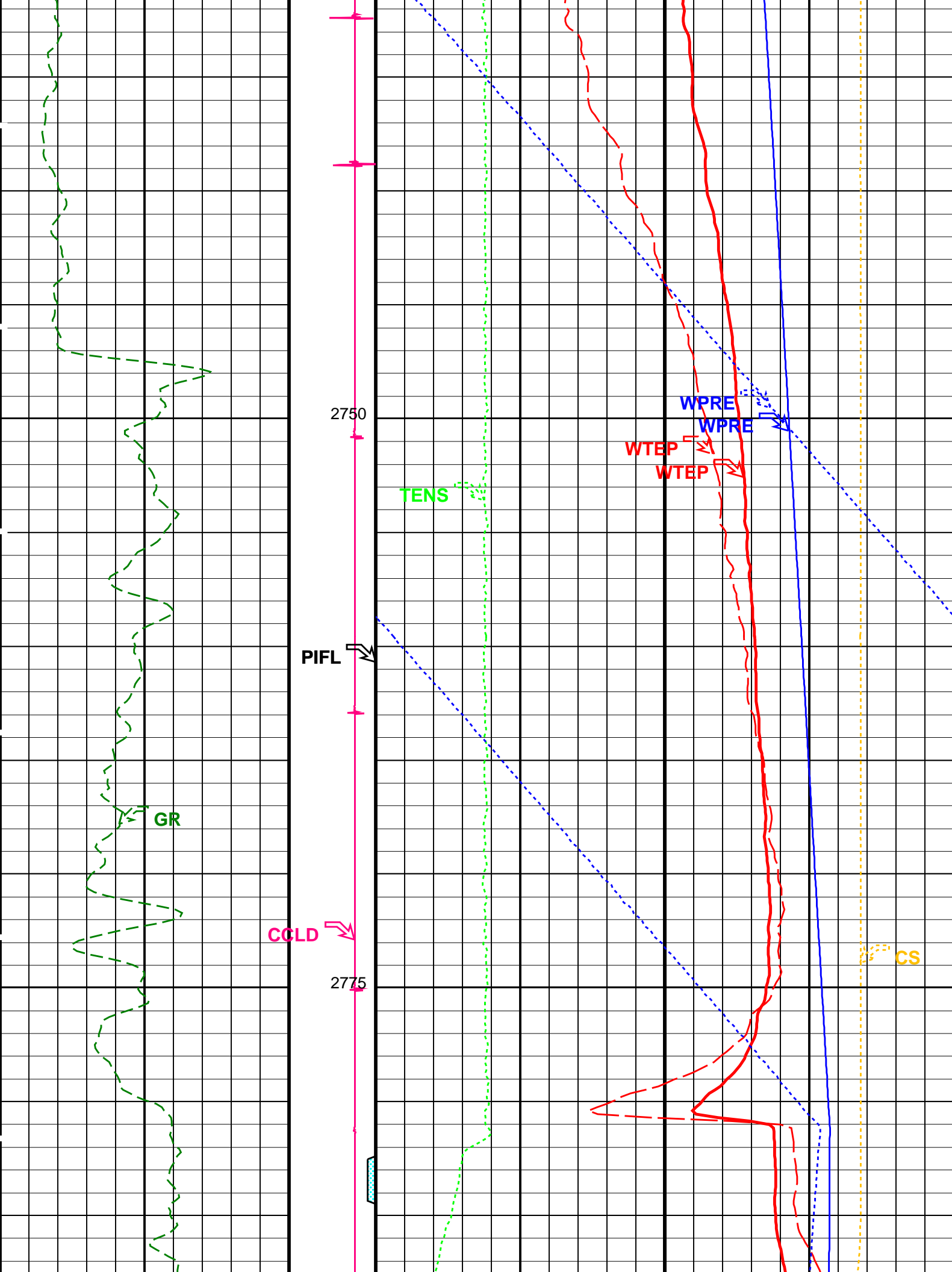
PIP SUMMARY

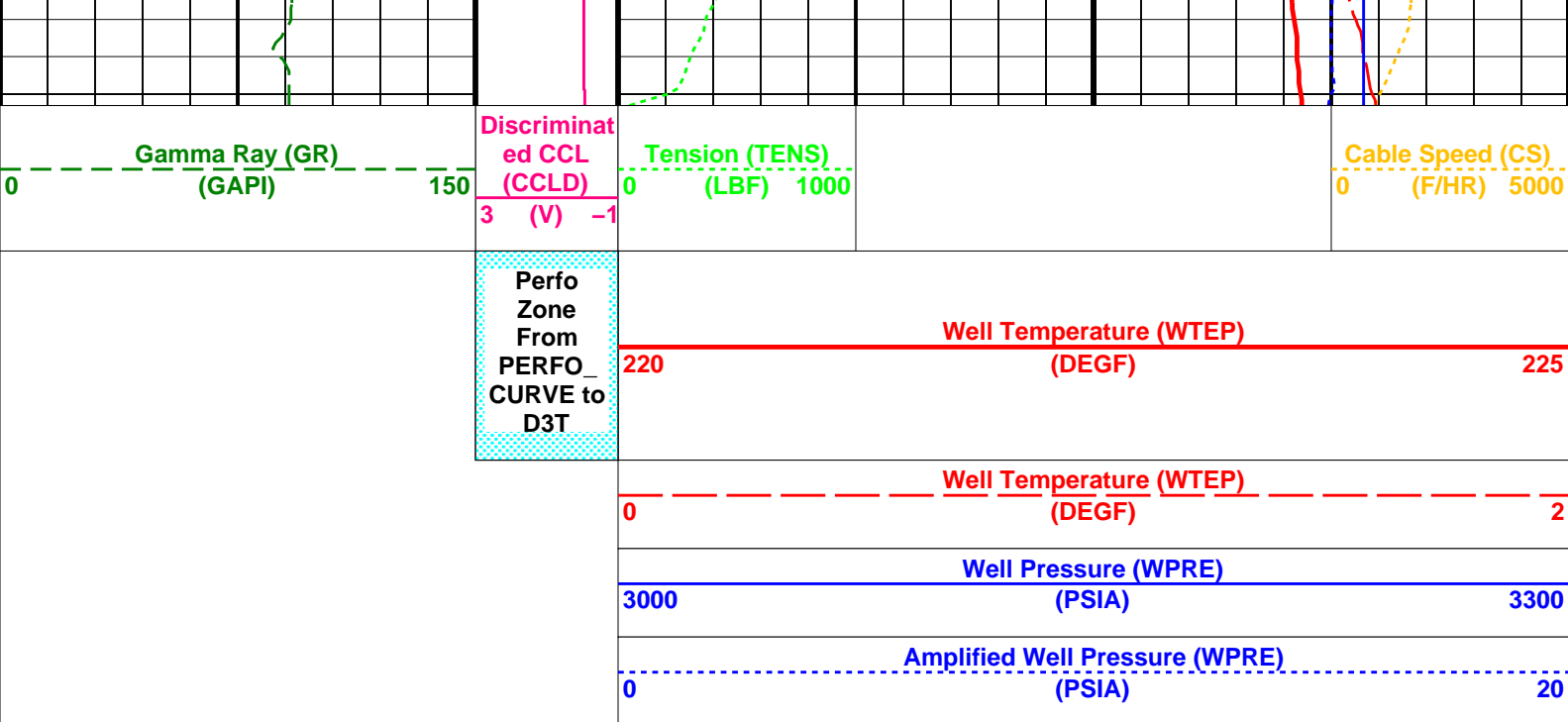
Time Mark Every 60 S











PIP SUMMARY

Time Mark Every 60 S

Format: PSP_1 Vertical Scale: 1:200 Graphics File Created: 16-Apr-2006 08:41

OP System Version: 14C0-302

MCM

PSPT-A/B 14C0-302

Parameters

DLIS Name	Description	Value
DO	System and Miscellaneous	
PP	Depth Offset for Playback	3.7 M
	Playback Processing	NORMAL

Input DLIS Files

DEFAULT	PSP_019LUP	FN:18	PRODUCER	16-Apr-2006 07:51	2786.6 M	2592.0 M
---------	------------	-------	----------	-------------------	----------	----------

Output DLIS Files

DEFAULT	PSP_022PUP	FN:21	PRODUCER	16-Apr-2006 08:41
---------	------------	-------	----------	-------------------

Company: Esso Australia Ltd.

Schlumberger

Well: A -1a

Field: Halibut

Rig : Prod4 / Vea

Country: Australia

PSP-GR-CCL

Pressure & Temperature

Survey