

Company: ExxonMobil

Well: FLA A-2a

Field: Flounder

Rig: Prod 4/ Crane

Country: Australia

1 11/16" Dump Bailer
CCL Log
Dumping Record

Rig: Prod 4/ Crane

Field: Flounder

Location: Gippsland Basin

Well: FLA A-2a

Company: ExxonMobil

LOCATION

Gippsland Basin
Bass Strait

Elev.: K.B. 33 m
G.L. -94 m
D.F. 33 m

Permanent Datum: _____
Log Measured From: Kelly Bushing _____
Drilling Measured From: Kelly Bushing _____

Mean Sea Level _____
Elev.: 0.0 m _____
33.0 m above Perm. Datum

State: Victoria

Max. Well Deviation 44 deg

Longitude 148 26 17.49 E

Latitude 038 18 45.24 S

PVT DATA		
Oil Density	Run 1	Run 2
Water Salinity		
Gas Gravity		
Bo		
Bw		
1/Bg		
Bubble Point Pressure		
Bubble Point Temperature		
Solution GOR		
Maximum Deviation	44 deg	
CEMENTING DATA		
Primary/Squeeze	Primary	
Casing String No		
Lead Cement Type		
Volume		
Density		
Water Loss		
Additives		
Tail Cement Type		
Volume		
Density		
Water Loss		
Additives		
Expected Cement Top		

Logging Date27-Feb-2006

Run Number1

Depth Driller2846.9 m

Schlumberger Depth2711.6 m Tagged

Bottom Log Interval2711.6 m

Top Log Interval2711.6 m

Casing Fluid TypeProduction Fluids

Salinity

Density

Fluid Level

BIT/CASING/TUBING STRING

Bit Size8.500 in

From1350 m

To2849 m

Casing/Tubing Size7.000 in

Weight26 lbm/ft

GradeL-80

From11.8 m

To2849 m

Maximum Recorded Temperatures111.1 degC

Logger On Bottom27-Feb-20068:07

Unit Number1AUSL

Recorded ByPaul Tarrant & Owen Darby

Witnessed ByGreg Rimmer

Logging Date		
Run Number		
Depth Driller		
Schlumberger Depth		
Bottom Log Interval		
Top Log Interval		
Casing Fluid Type		
Salinity		
Density		
Fluid Level		
BIT/CASING/TUBING STRING		
Bit Size		
From		
To		
Casing/Tubing Size		
Weight		
Grade		
From		
To		
Maximum Recorded Temperatures		
Logger On Bottom		
Unit Number		
Recorded By		
Witnessed By		

DEPTH SUMMARY LISTING

Date Created: 27-FEB-2006 8:18:17

Depth System Equipment

Depth Measuring Device		Tension Device		Logging Cable	
Type:	IDW-H	Type:	CMTD-C	Type:	2-32ZT
Serial Number:	797	Serial Number:	1037	Serial Number:	4207
Calibration Date:	01-May-2005	Calibration Date:	15-Feb-2006	Length:	5002.07 M
Calibrator Serial Number:	1009	Calibrator Serial Number:	1174	Conveyance Method: Wireline Rig Type: Offshore_Fixed	
Calibration Cable Type:	2-32ZT	Calibration Gain:	1.38		
Wheel Correction 1:	-3	Calibration Offset:	448.00		
Wheel Correction 2:	2				

Depth Control Parameters

Log Sequence:	Subsequent Trip To the Well
Reference Log Name:	dummy plug correlation
Reference Log Run Number:	1
Reference Log Date:	18-Feb-2006

Depth Control Remarks

1. Correlated to Schlumberger Dummy plug log
2. Used IDW as primary depth control
3. Used Z-Chart as secondary depth control
4.
5.
6.

DISCLAIMER

THE USE OF AND RELIANCE UPON THIS RECORDED-DATA BY THE HEREIN NAMED COMPANY (AND ANY OF ITS AFFILIATES, PARTNERS, REPRESENTATIVES, AGENTS, CONSULTANTS AND EMPLOYEES) IS SUBJECT TO THE TERMS AND CONDITIONS AGREED UPON BETWEEN SCHLUMBERGER AND THE COMPANY, INCLUDING: (a) RESTRICTIONS ON USE OF THE RECORDED-DATA; (b) DISCLAIMERS AND WAIVERS OF WARRANTIES AND REPRESENTATIONS REGARDING COMPANY'S USE OF AND RELIANCE UPON THE RECORDED-DATA; AND (c) CUSTOMER'S FULL AND SOLE RESPONSIBILITY FOR ANY INFERENCE DRAWN OR DECISION MADE IN CONNECTION WITH THE USE OF THIS RECORDED-DATA.

OTHER SERVICES1
OS1: None
OS2:
OS3:
OS4:
OS5:







REMARKS: RUN NUMBER 1
Log correlated to Solar log dated 16-Sep-2006, provided by the client.
Well has a max deviation of 44 deg at 2445m MDKB
Objective:
x2 RIH with 1 11/16" dump bailer to drop approximately 1.0m
of cement on a 7" MPBT plug set at an earlier date.
CCL to dump bailer bottom = 11.0m
CCL stop depth bailer # 1 = 2699.8m MDKB
CCL stop depth bailer # 2 = 2822.0m MDKB

CCL stop depth bailer # 2 = 2699.0m MDKB
TD = 2711.6m MDKB

Crew: Jake Annear and John Light

RUN 1			RUN 2		
PROGRAM VERSION:		3282	PROGRAM VERSION:		
FLUID LEVEL:		13C0-300	FLUID LEVEL:		
LOGGED INTERVAL	START	STOP	LOGGED INTERVAL	START	STOP

EQUIPMENT DESCRIPTION

RUN 1		RUN 2	
SURFACE EQUIPMENT			
WITM (SHM)			
DOWNHOLE EQUIPMENT			
AH-SWBS AH-SWBS 763		13.65	
AH-SWBS AH-SWBS 762		12.95	
AH-SWBS AH-SWBS 761		12.26	
AH-SWHS AH-SWHS 726		11.56	
CCL-L CCL-L 4195		11.25	
SHM_GUN GUN-Dump Bailer		10.80	
Tension CCL		TOOL ZERO	

TOOL BOTTOM

MAXIMUM STRING DIAMETER 1.69 IN
MEASUREMENTS RELATIVE TO TOOL ZERO
ALL LENGTHS IN METERS

Client: Esso Australia Ltd

Well: FLA_A2a

Field: Bass Strait

State: Victoria

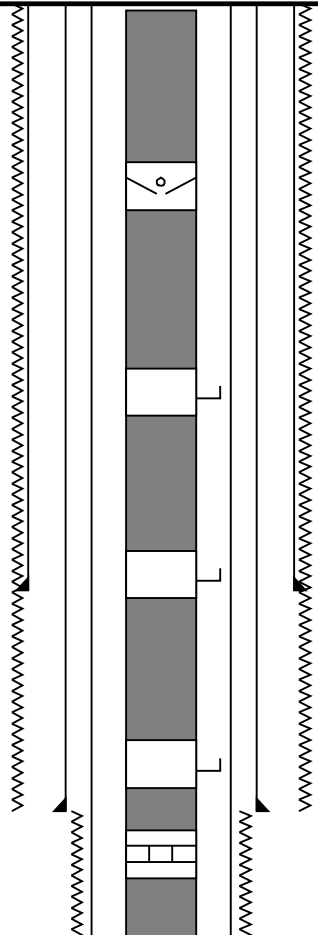
Country: Australia

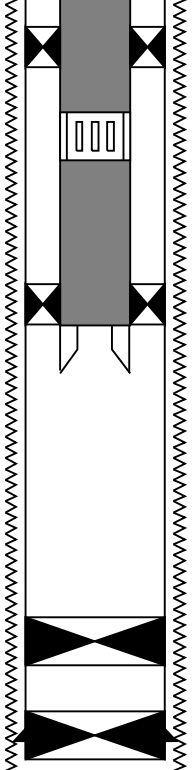
Rig Name: Flounder

Reference Datum: Mean Sea Level

Elevation: 33 m

Drawing Date: 2/11/2006

Production String	(in)		(m)	Well Schematic	(m)	(in)		Casing String
	OD	ID	MD		MD	OD	ID	
Tubing	3.500		11.8		0.0	14.500		Borehole Segment
Sub Surface Safety Valve	3.500		443.1					
Gas Lift Mandrel	3.500		789.9					
Gas Lift Mandrel	3.500		1284.8		981.5	13.375		Casing Shoe
Gas Lift Mandrel	3.500		1487.6		1350.0	14.500		Casing Shoe
Nipple	3.500		1601.2		1350.0	8.500 9.625		Borehole Segment Borehole Segment Bottom

Packer	7.000	3.500	2082.8					
Sliding Sleeve	3.500		2099.9					
Packer	7.000	3.500	2179.4					
Bell Nipple Guide	3.500		2183.2					
Bridge Plug	7.000	0.000	2720.0					
Bridge Plug	7.000	0.000	2765.0		2796.9	7.000		Casing Shoe

All depths are drillers
depths

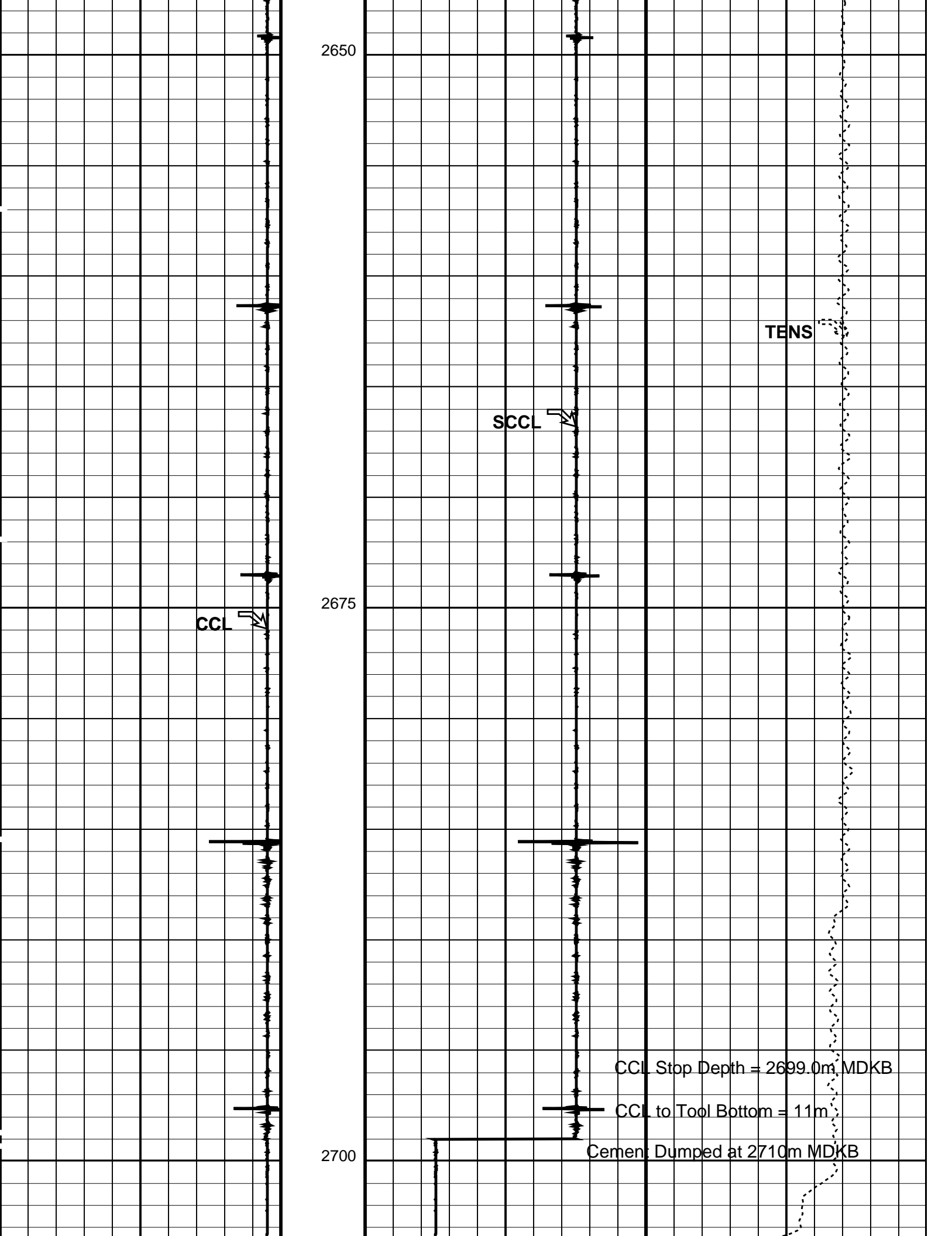


Job Event Summary

MAXIS Field Log

Schlumberger Job Event Summary

Time	Elapsed Time	Depth (M)	File	
Rig Up Started	27-Feb-2006 6:45			
Rig up for first cement dump bailer				
Log Pass (up)	27-Feb-2006 7:52	000:05	2703.6 – 2658.8	PERFO_010LUP
Rig Down Completed	27-Feb-2006 8:30			
Rig down for first cement dump bailer				
Rig Up Started	27-Feb-2006 9:00			
Rig up for second cement dump bailer				
Log Pass (up)	27-Feb-2006 9:27	000:06	2703.6 – 2642.9	PERFO_014LUP
Rig Down Completed	27-Feb-2006 10:45			
Rig down for second cement dump bailer				



Casing Collar Locator (CCL)	Shifted Casing Collar Locator (SCCL)	Tension (TENS)
-19 (----) 1	-10 (----) 10 0	(LBF) 3000

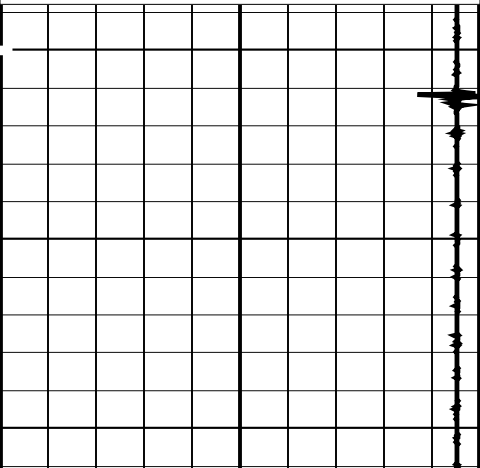
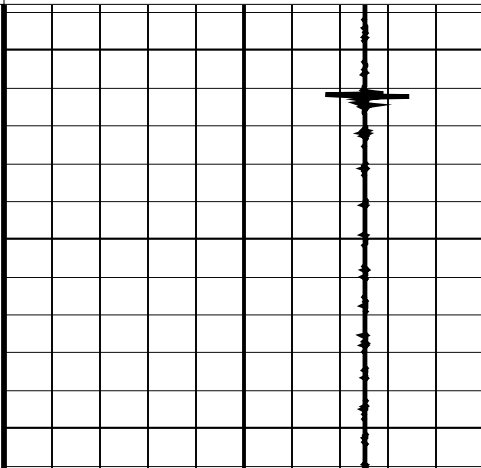
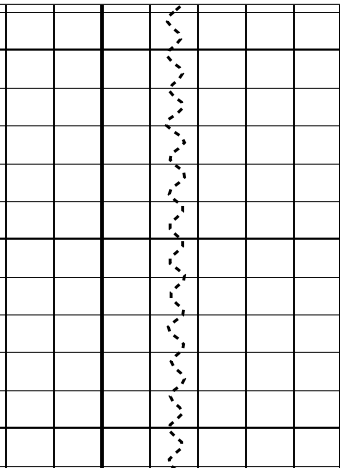
PIP SUMMARY		
Time Mark Every 60 S		
Parameters		
DLIS Name	Description	Value
CCL-L: Casing Collar Locator		
CCLD	CCL reset delay	12 IN
CCLT	CCL Detection Level	0.3 V
Format: PERFO	Vertical Scale: 1:200	Graphics File Created: 27-Feb-2006 09:27
OP System Version: 13C0-300		
MCM		
SHM_GUN	13C0-300	CCL-L 13C0-300
Output DLIS Files		
DEFAULT	PERFO_014LUP	FN:13 PRODUCER 27-Feb-2006 09:27

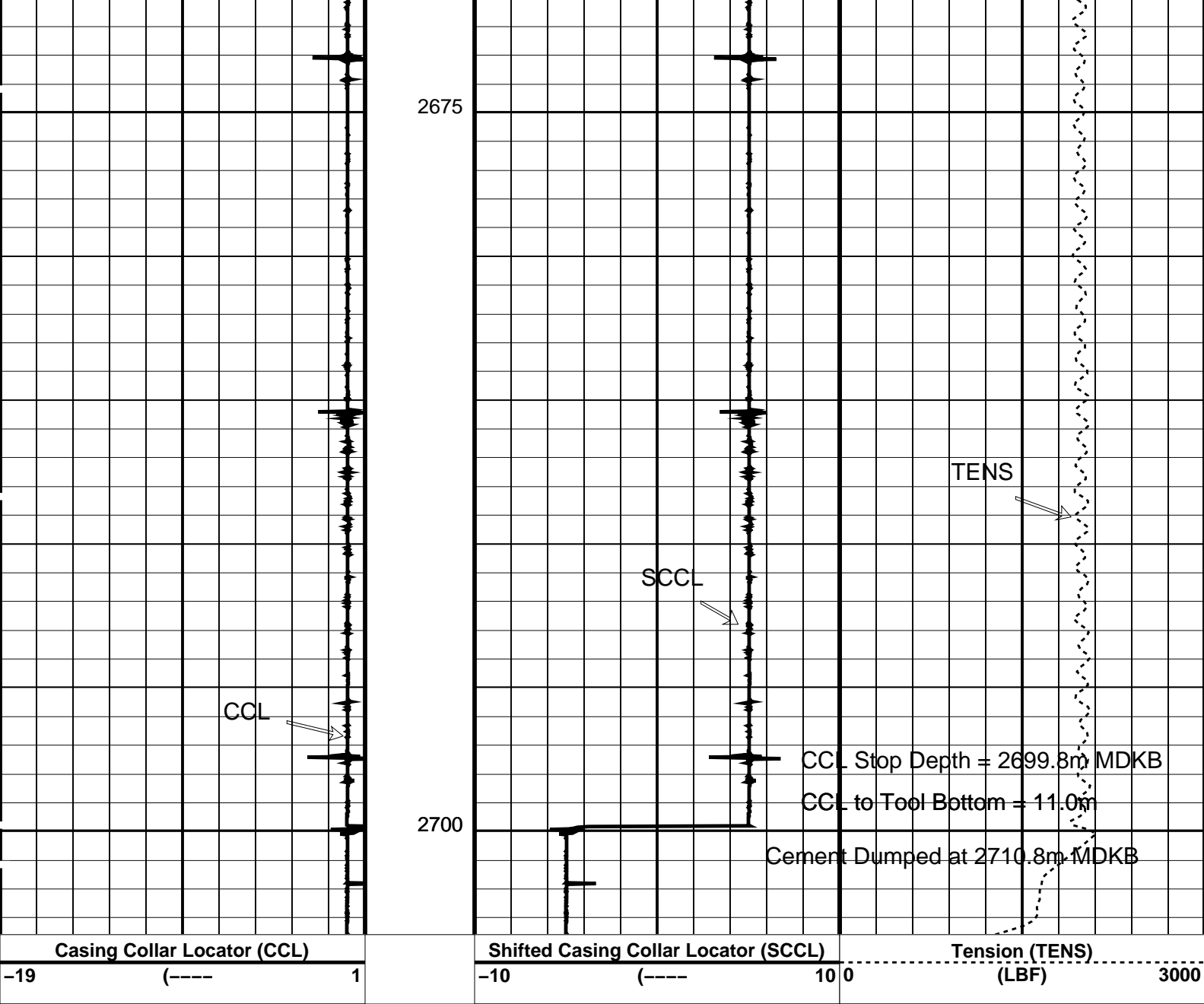


1 11/16" Dump Bailer
Cement Dump # 1

MAXIS Field Log

Company: ExxonMobil						Well: FLA A-2a	
Output DLIS Files							
DEFAULT	PERFO_010LUP	FN:9	PRODUCER	27-Feb-2006 07:52	2703.6 M	2658.8 M	
OP System Version: 13C0-300							
MCM							
SHM_GUN	13C0-300	CCL-L		13C0-300			

PIP SUMMARY		
Time Mark Every 60 S		
Casing Collar Locator (CCL)	Shifted Casing Collar Locator (SCCL)	Tension (TENS)
-19 (----) 1	-10 (----) 10 0	(LBF) 3000
		



PIP SUMMARY

Time Mark Every 60 S

Parameters		
DLIS Name	Description	Value
CCL-L	Casing Collar Locator	
CCLD	CCL reset delay	12 IN
CCLT	CCL Detection Level	0.3 V

Format: PERFO Vertical Scale: 1:200 Graphics File Created: 27-Feb-2006 07:52

OP System Version: 13C0-300			
MCM			
SHM_GUN	13C0-300	CCL-L	13C0-300

Output DLIS Files			
DEFAULT	PERFO_010LUP	FN:9	PRODUCER 27-Feb-2006 07:52

Field: **Flounder**
Rig: **Prod 4/ Crane**
Country: **Australia**

1 11/16" Dump Bailer
CCL Log
Dumping Record