



Company: Esso Australia Ltd.

Well: FLA A\_17a

Field: Flounder

Rig: Prod 4

Country: Australia

4 1/2" Plug

MPBT

Setting Record

Rig: Prod 4

Field: Flounder

Location: Gippsland Basin

Well: FLA A\_17a

Company: Esso Australia Ltd.

LOCATION

Gippsland Basin

Bass Strait

Elev.: K.B. 33 m

G.L. -94 m

D.F. 33 m

Permanent Datum: \_\_\_\_\_

Log Measured From: \_\_\_\_\_

Drilling Measured From: \_\_\_\_\_

Mean Sea Level \_\_\_\_\_

Kelly Bushing \_\_\_\_\_

Kelly Bushing \_\_\_\_\_

Elev.: 0.0 m \_\_\_\_\_

33.0 m above Perm. Datum

State: Victoria

Max. Well Deviation 49 deg

Longitude 148° 06' 15.1" E

Latitude 38°18' 45.24"S

PVT DATA				Run 1	Run 2	Run 3
Oil Density						
Water Salinity						
Gas Gravity						
Bo						
Bw						
1/Bq						
Bubble Point Pressure						
Bubble Point Temperature						
Solution GOR						
Maximum Deviation				49 deg		
CEMENTING DATA						
Primary/Squeeze				Primary		
Casing String No						
Lead Cement Type						
Volume						
Density						
Water Loss						
Additives						
Tail Cement Type						
Volume						
Density						
Water Loss						
Additives						
Expected Cement Top						

Logging Date

25-Feb-2006

Run Number

1

Depth Driller

3660 m

Schlumberger Depth

3518.5 m tagged

Bottom Log Interval

3492 m

Top Log Interval

3492 m

Casing Fluid Type

Production Fluids

Salinity

Density

Fluid Level

BIT/CASING/TUBING STRING

Bit Size

8.500 in

From

11.75 m

To

3660 m

Casing/Tubing Size

7.625 in

Weight

26.4 lbm/ft

Grade

N-80

From

11.75 m

To

2900 m

Maximum Recorded Temperatures

116 degC

Logger On Bottom

25-Feb-2006

Time

12:00

Unit Number

1

Location

AUSL

Recorded By

Paul Tarrant & Owen Darby

Witnessed By

Greg Rimmer

Logging Date				
Run Number				
Depth Driller				
Schlumberger Depth				
Bottom Log Interval				
Top Log Interval				
Casing Fluid Type				
Salinity				
Density				
Fluid Level				
BIT/CASING/TUBING STRING				
Bit Size				
From				
To				
Casing/Tubing Size				
Weight				
Grade				
From				
To				
Maximum Recorded Temperatures				
Logger On Bottom				
Unit Number				
Recorded By				
Witnessed By				

**DEPTH SUMMARY LISTING**

Date Created: 25-FEB-2006 9:42:23

**Depth System Equipment**

Depth Measuring Device		Tension Device		Logging Cable	
Type:	IDW-H	Type:	CMTD-C	Type:	2-32ZT
Serial Number:	797	Serial Number:	1037	Serial Number:	4207
Calibration Date:	01-May-2005	Calibration Date:	15-Feb-2006	Length:	5002.07 M
Calibrator Serial Number:	1009	Calibrator Serial Number:	1174	Conveyance Method:	Wireline
Calibration Cable Type:	2-32ZT	Calibration Gain:	1.38	Rig Type:	Offshore_Fixed
Wheel Correction 1:	-3	Calibration Offset:	448.00		
Wheel Correction 2:	2				

**Depth Control Parameters**

Log Sequence:	Subsequent Log In the Well
Reference Log Name:	ExxonMobil composite solar log
Reference Log Run Number:	Unknown
Reference Log Date:	17-Mar-2005

**Depth Control Remarks**

1. Correlated to ExxonMobil solar composite log provided by client
2. Used IDW as primary depth control
3. Used Z-Chart as secondary depth control
4.
5.
6.

**DISCLAIMER**

THE USE OF AND RELIANCE UPON THIS RECORDED-DATA BY THE HEREIN NAMED COMPANY (AND ANY OF ITS AFFILIATES, PARTNERS, REPRESENTATIVES, AGENTS, CONSULTANTS AND EMPLOYEES) IS SUBJECT TO THE TERMS AND CONDITIONS AGREED UPON BETWEEN SCHLUMBERGER AND THE COMPANY, INCLUDING: (a) RESTRICTIONS ON USE OF THE RECORDED-DATA; (b) DISCLAIMERS AND WAIVERS OF WARRANTIES AND REPRESENTATIONS REGARDING COMPANY'S USE OF AND RELIANCE UPON THE RECORDED-DATA; AND (c) CUSTOMER'S FULL AND SOLE RESPONSIBILITY FOR ANY INFERENCE DRAWN OR DECISION MADE IN CONNECTION WITH THE USE OF THIS RECORDED-DATA.














OTHER SERVICES1
OS1: 2 1/8" Enerjet gun
OS2:
OS3:
OS4:
OS5:
REMARKS: RUN NUMBER 1
Log correlated to Solar log dated 17-Mar-2005, provided by the client.
Well has max deviation of 49 deg at 2946m MDKB
Objective:
RIH with 2 1/8" Dummy plug and produce correlation log for
MPBT.
RIH with 4 1/2" MPBT plug with top sealing element at approximately
3492.0m MDKB to isolate existing perforations.
Two dump bailer run's are required first water then cement to drop

Two dump bailer runs are required first water then cement to drop approximately 1.0m of cement of the plug.  
 CCL stop depth = 3485.2m MDKB  
 CCL to top sealing element = 6.8m  
 3485.2m + 6.8m = 3492.0m MDKB setting depth  
 Dump Bailer's  
 CCL to tool bottom = 6.2m  
 While RIH with the 4 1/2" MBPT plug the tool got caught up on a SPM at 1646m MDKB  
 Crew: Jake Annear and John Light

RUN 1			RUN 2		
PROGRAM VERSION: 13C0-300 FLUID LEVEL:			PROGRAM VERSION: FLUID LEVEL:		
LOGGED INTERVAL	START	STOP	LOGGED INTERVAL	START	STOP

EQUIPMENT DESCRIPTION

RUN 1		RUN 2	
SURFACE EQUIPMENT		SURFACE EQUIPMENT	
MPBM 47		WITM (SHM)	

DOWNHOLE EQUIPMENT			DOWNHOLE EQUIPMENT		
AH-SWBS AH-SWBS 763		12.35	AH-SWBS AH-SWBS 731		10.41
AH-SWBS AH-SWBS 762		11.67	AH-SWBS AH-SWBS 761		9.73
AH-SWBS AH-SWBS 761		10.98	AH-SWBS AH-SWBS 762		9.04
MH-SWHS MH-SWHS 726		10.30			
CCL-L CCL-L 4191	 CCL Tachomete Cable Cur Head Volt Tension	9.97 TOOL ZERO	MH-SWHS 726 MH-SWHS 726 726		8.36
MPSU-CA MPSU-CA 1011		9.51	EQF-43 EQF-43		8.03
			CCL-L CCL-L 4195	 Tension CCL	6.20 TOOL ZERO
			SHM_GUN GUN-Dump Bailer		5.74

MPEX-AA  
MPEX-AA

3.10

TOOL BOTTOM

MAXIMUM STRING DIAMETER 2.13 IN  
MEASUREMENTS RELATIVE TO TOOL ZERO  
ALL LENGTHS IN METERS

TOOL BOTTOM

MAXIMUM STRING DIAMETER 2.13 IN  
MEASUREMENTS RELATIVE TO TOOL ZERO  
ALL LENGTHS IN METERS

Client: Esso Australia Ltd

Well: A\_17a

Field: Bass Strait

State: Victoria

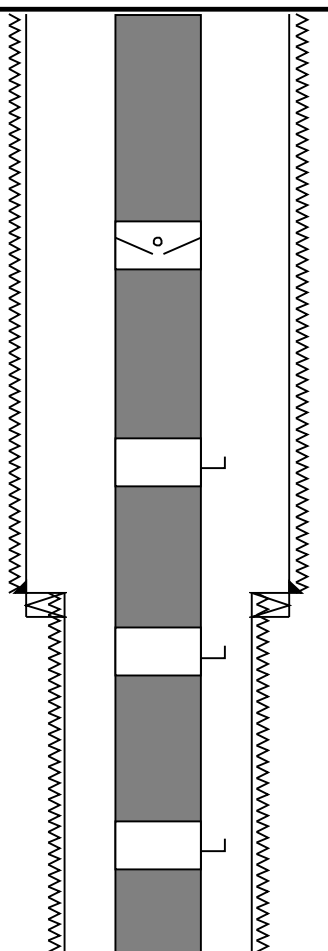
Country: Australia

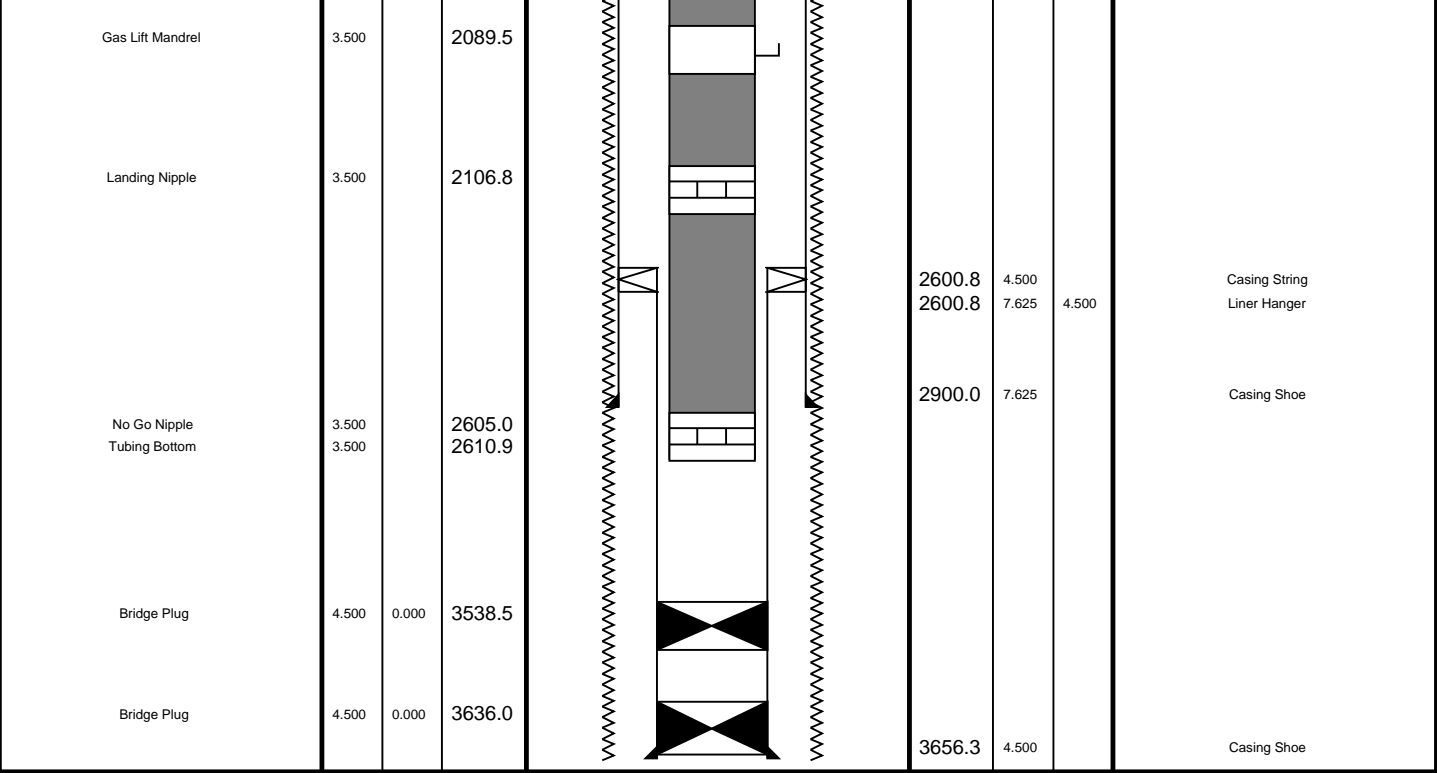
Rig Name: Flounder

Reference Datum: Mean Sea Level

Elevation: 33.0 m

Drawing Date: 25/02/2006

Production String	(in)		(m)	Well Schematic	(m)		(in)	Casing String
	OD	ID	MD		MD	OD	ID	
Tubing	3.500		12.4		11.8	11.750 10.750		Borehole Segment Casing String
Sub surface saftey valve	3.500		453.8					
Gas Lift Mandrel	3.500		871.5					
Gas Lift Mandrel	3.500		1385.7		1256.3 1256.3 1256.3	10.750 8.500 10.750 7.625	7.625	Casing Shoe Borehole Segment Liner Hanger Casing String
Gas Lift Mandrel	3.500		1646.3					



Job Events Summary

MAXIS Field Log

Schlumberger Job Event Summary

Time	Elapsed Time	Depth (M)	File
Rig Up Started	25-Feb-2006 9:30		
Rig up for MPBT Dummy run			
Log Pass (up)	25-Feb-2006 11:40	000:06	3522.0 – 3447.3 PSP_013LUP
Dummy pass			
Rig Down Completed	25-Feb-2006 13:00		
Rig down for MPBT dummy run			
Rig Up Started	25-Feb-2006 13:30		
Rig up for MPBT			
Log Pass (up)	25-Feb-2006 16:10	000:04	3498.6 – 3445.9 CCL_023LUP
Correlation pass			
Simulated Log	25-Feb-2006 16:16	000:17	CCL_025LUP
station log			
Rig Down Completed	25-Feb-2006 17:45		
Rig down for MPBT			
Rig Up Started	26-Feb-2006 7:05		
Water dump bailer rig up			
Log Pass (up)	26-Feb-2006 7:53	000:06	3403.3 – 3443.0 BEBEO_043LUP

Log Pass (up) 26-Feb-2006 7:33 000.06 3492.2 - 3443.0 PERFO\_043LUP  
Dumped water  
Rig Down Completed 26-Feb-2006 9:10  
Water dump bailer rig down  
Rig Up Started 26-Feb-2006 9:30  
Cement dump bailer rig up  
Log Pass (up) 26-Feb-2006 10:17 000:05 3489.0 - 3446.8 PERFO\_051LUP  
Rig Down Completed 26-Feb-2006 11:00  
Cement dump bailer rig down

**Schlumberger**

## Operational Summary Listing

MAXIS Field Log

### PERFO2 4 1/2 MPBT Operational Summary Listing

Device	Status	Req Depth ( M)	Obs Depth ( M)	Time Used
--------	--------	----------------	----------------	-----------

MPEX	Used	3492.0	3492.0	Sat Feb 25 16:33:19 2006
------	------	--------	--------	--------------------------

### PERFO2 Water Dump Bailer Operational Summary Listing

Device	Status	Req Depth ( M)	Obs Depth ( M)	Time Used
--------	--------	----------------	----------------	-----------

GUN1	Used	3484.9	3484.9	Sun Feb 26 07:55:31 2006
------	------	--------	--------	--------------------------

### PERFO2 Cement Dump Bailer Operational Summary Listing

Device	Status	Req Depth ( M)	Obs Depth ( M)	Time Used
--------	--------	----------------	----------------	-----------

GUN1	Used	3485.5	3485.5	Sun Feb 26 10:19:35 2006
------	------	--------	--------	--------------------------

**Schlumberger**

## 2 1/8" Dump Bailer Cement

MAXIS Field Log

Output DLIS Files

DEFAULT

PERFO\_051LUP

FN:50

PRODUCER

26-Feb-2006 10:17

OP System Version: 13C0-300

MCM

SHM\_GUN

13C0-300

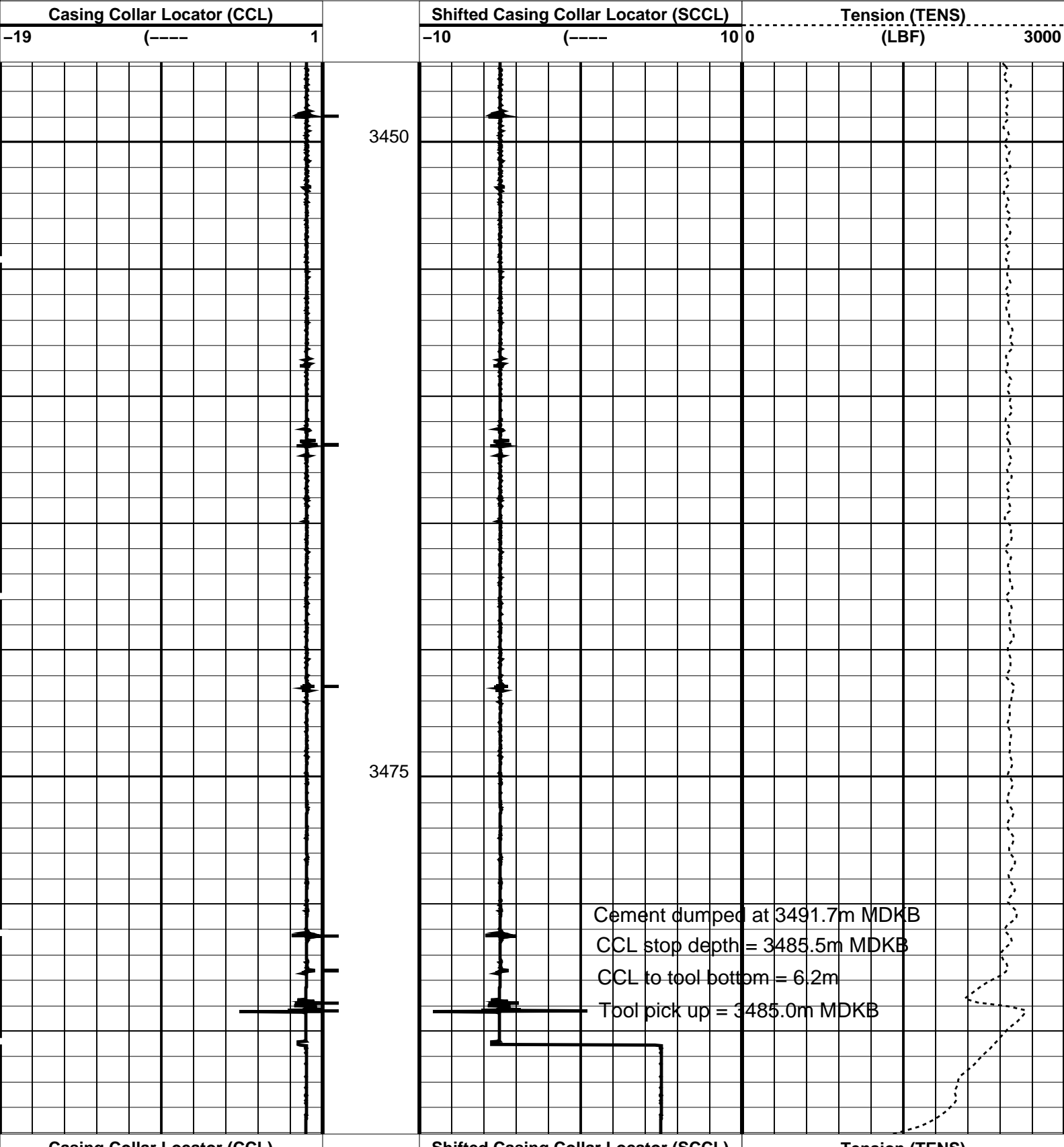
CCL-L

13C0-300

PIP SUMMARY


Casing Collars

Time Mark Every 60 S



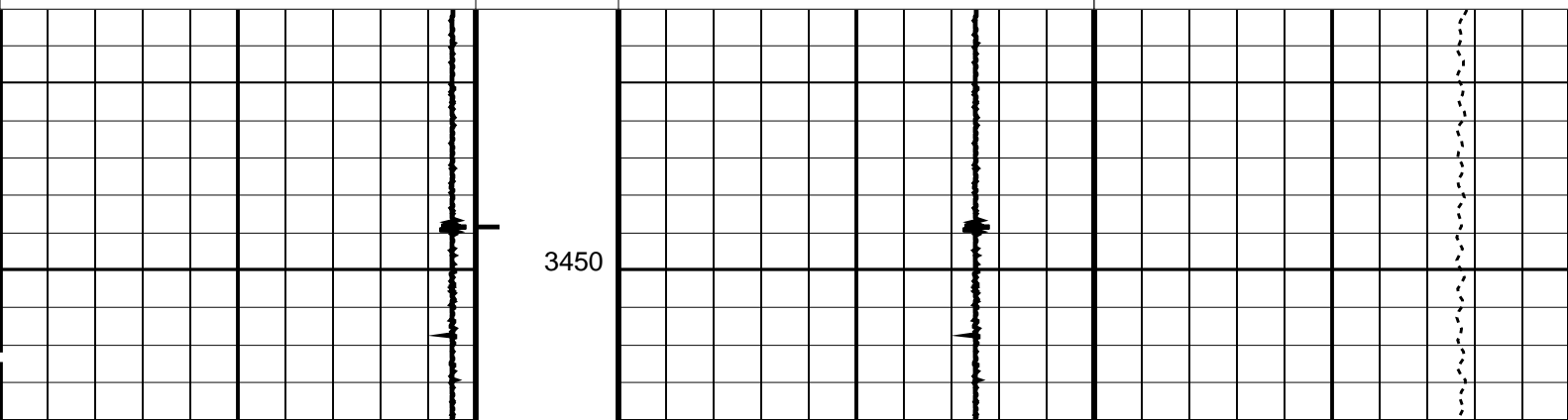


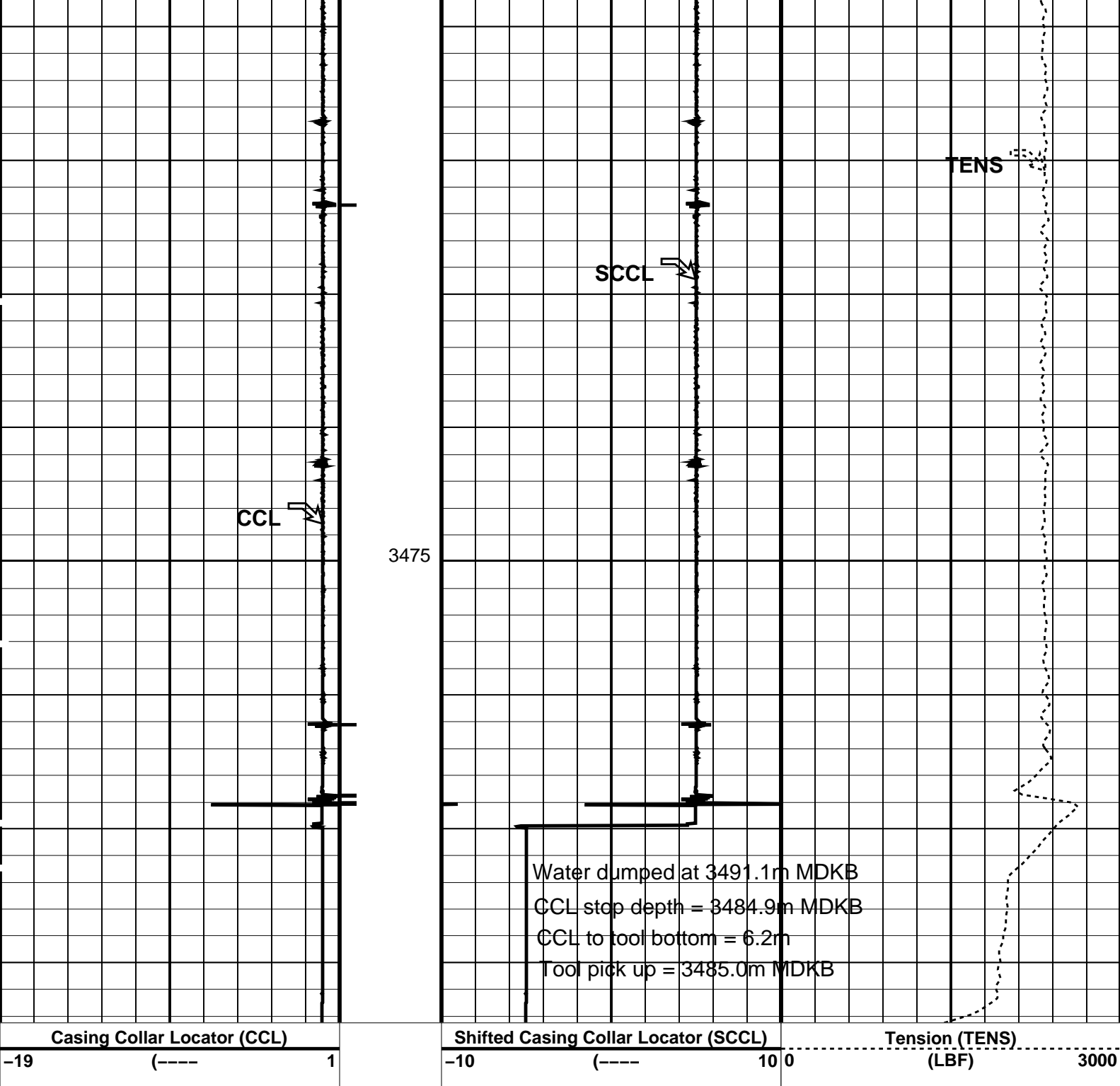
Casing Collar Locator (CCL)	Shifted Casing Collar Locator (SCCL)	Tension (TENS)
-19 (----) 1	-10 (----) 10 0	(LBF) 3000
PIP SUMMARY		
Time Mark Every 60 S		
Casing Collars		
Parameters		
DLIS Name	Description	Value
CCL-L: Casing Collar Locator		
CCLD	CCL reset delay	12 IN
CCLT	CCL Detection Level	0.3 V
Format: PERFO Vertical Scale: 1:200 Graphics File Created: 26-Feb-2006 10:17		
OP System Version: 13C0-300		
MCM		
SHM_GUN	13C0-300	CCL-L 13C0-300
Output DLIS Files		
DEFAULT	PERFO_051LUP	FN:50 PRODUCER 26-Feb-2006 10:17



2 1/8" Dump Bailer  
Water

MAXIS Field Log

Company: Esso Australia Ltd.		Well: FLA A_17a	
Output DLIS Files			
DEFAULT	PERFO_043LUP	FN:42 PRODUCER 26-Feb-2006 07:53	3492.2 M 3443.0 M
OP System Version: 13C0-300			
MCM			
SHM_GUN	13C0-300	CCL-L	13C0-300
PIP SUMMARY			
Time Mark Every 60 S			
Casing Collars			
Casing Collar Locator (CCL)	Shifted Casing Collar Locator (SCCL)	Tension (TENS)	
-19 (----) 1	-10 (----) 10 0	(LBF) 3000	
			



### PIP SUMMARY

└─ Casing Collars

Time Mark Every 60 S

### Parameters

DLIS Name	Description	Value
CCL-L: Casing Collar Locator		
CCLD	CCL reset delay	12 IN
CCLT	CCL Detection Level	0.3 V

Format: PERFO Vertical Scale: 1:200

Graphics File Created: 26-Feb-2006 07:53

OP System Version: 13C0-300  
MCM

SHM\_GUN 13C0-300 CCL-L 13C0-300

Output DLIS Files

**Schlumberger****4 1/2" MPBT Plug  
Setting Pass**

MAXIS Field Log

**Output DLIS Files**

DEFAULT

CCL\_025LUP

FN:24

PRODUCER

25-Feb-2006 16:16

12192.0 M

11942.7 M

**OP System Version: 13C0-300**

MCM

MPEX-EA\_S

13C0-300

MPSU-CA

13C0-300

CCL-L

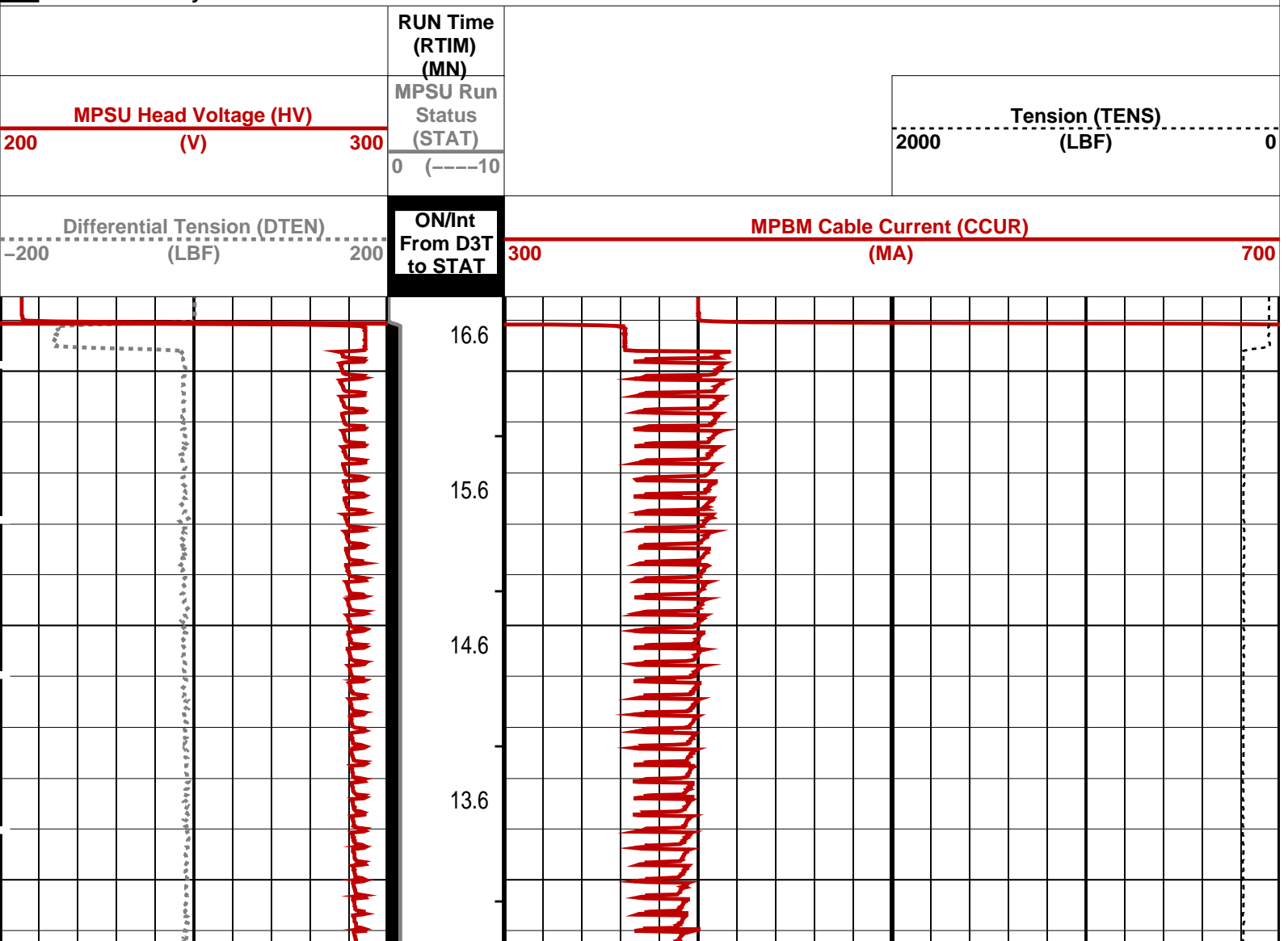
13C0-300

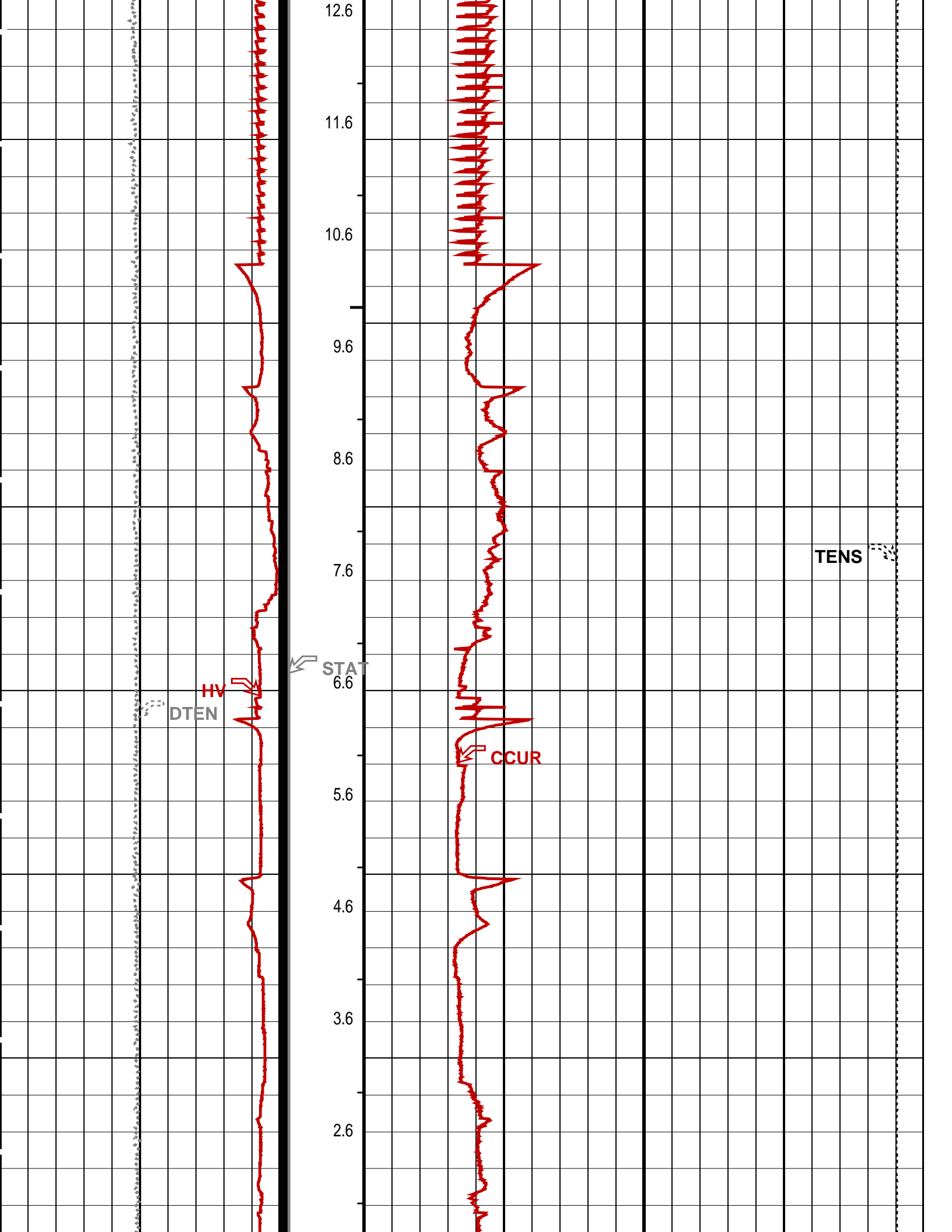
**PIP SUMMARY**

└ MPSU Run Time Every 1 MN

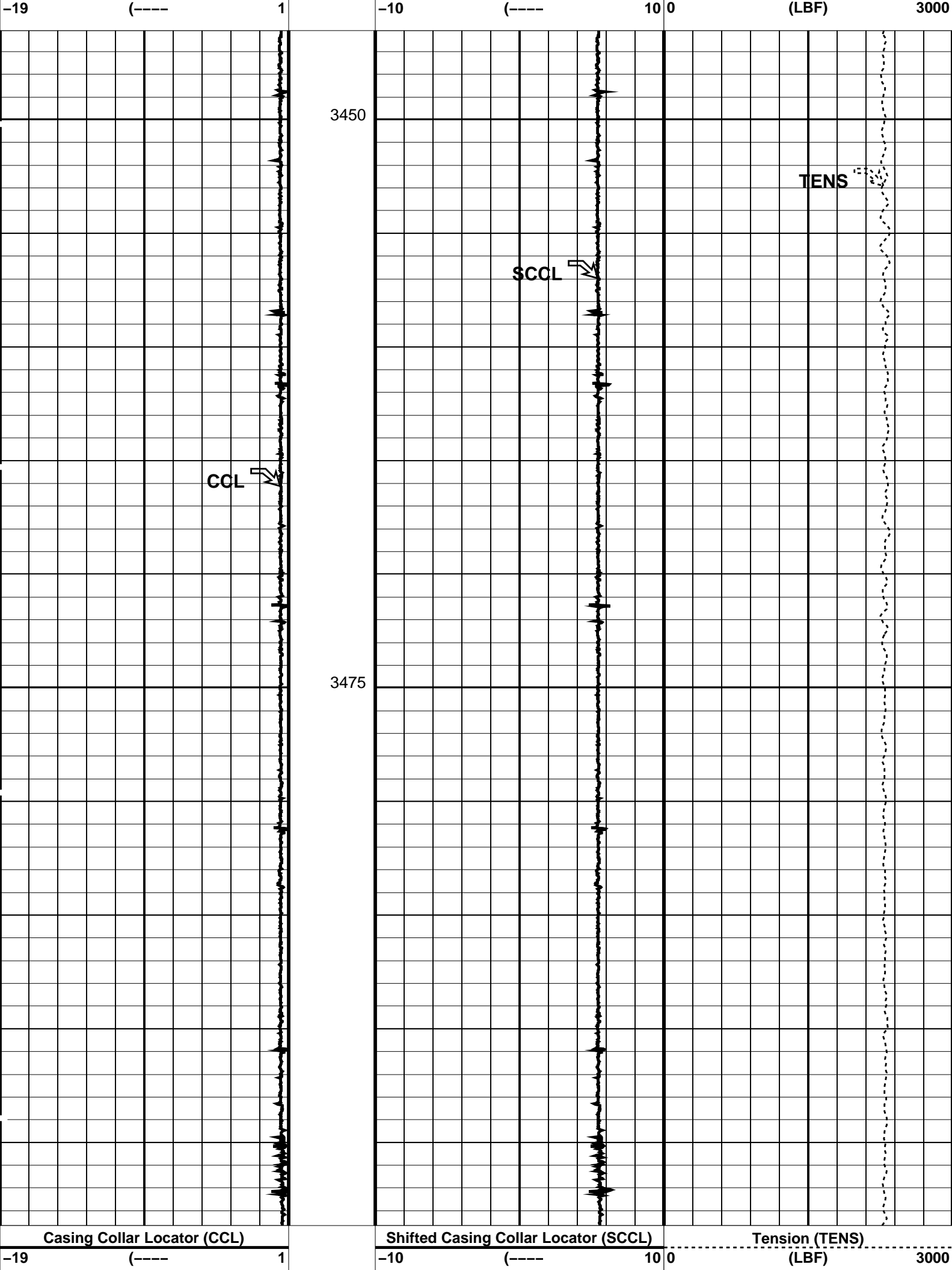
└ MPSU Run Time Every 10 MN

■ Time Mark Every 60 S

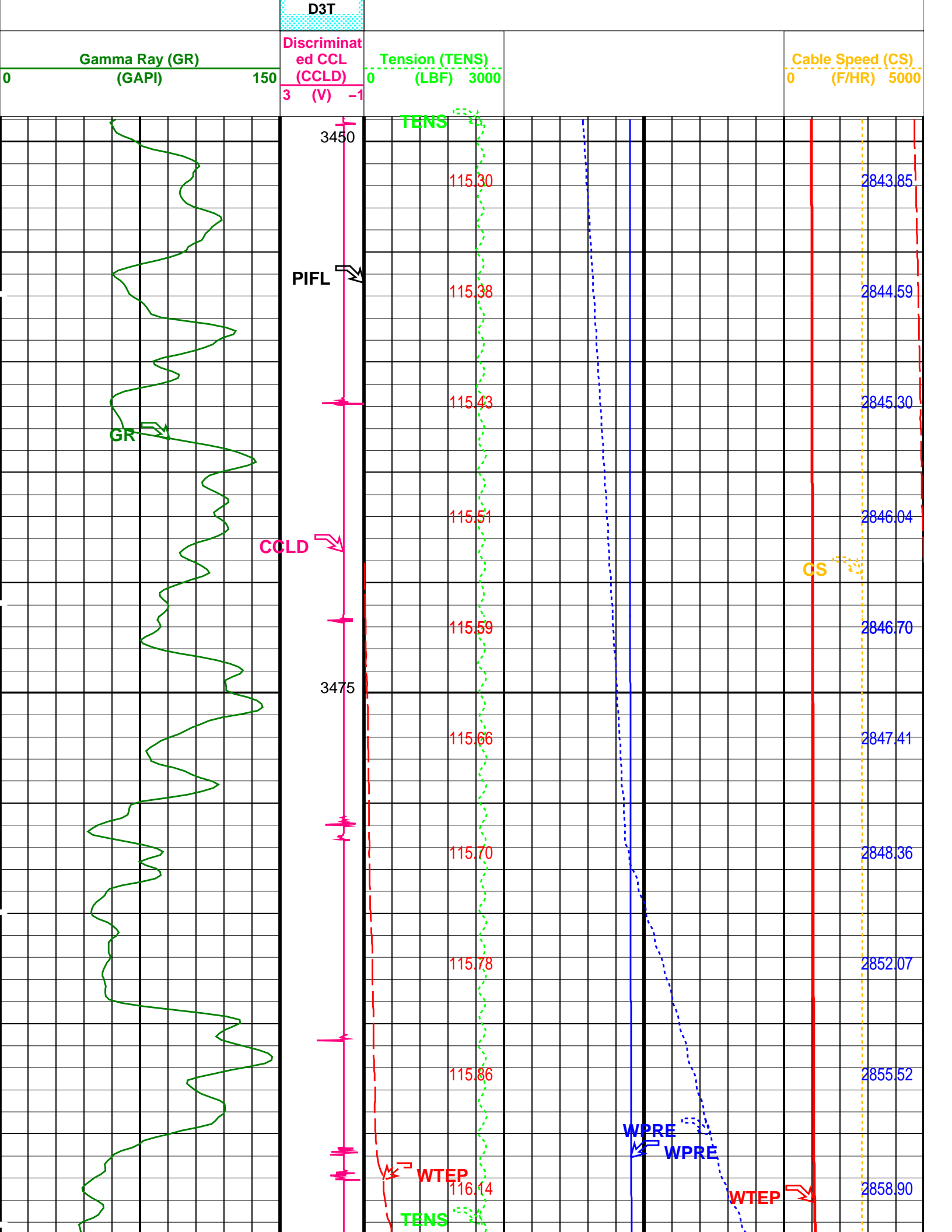




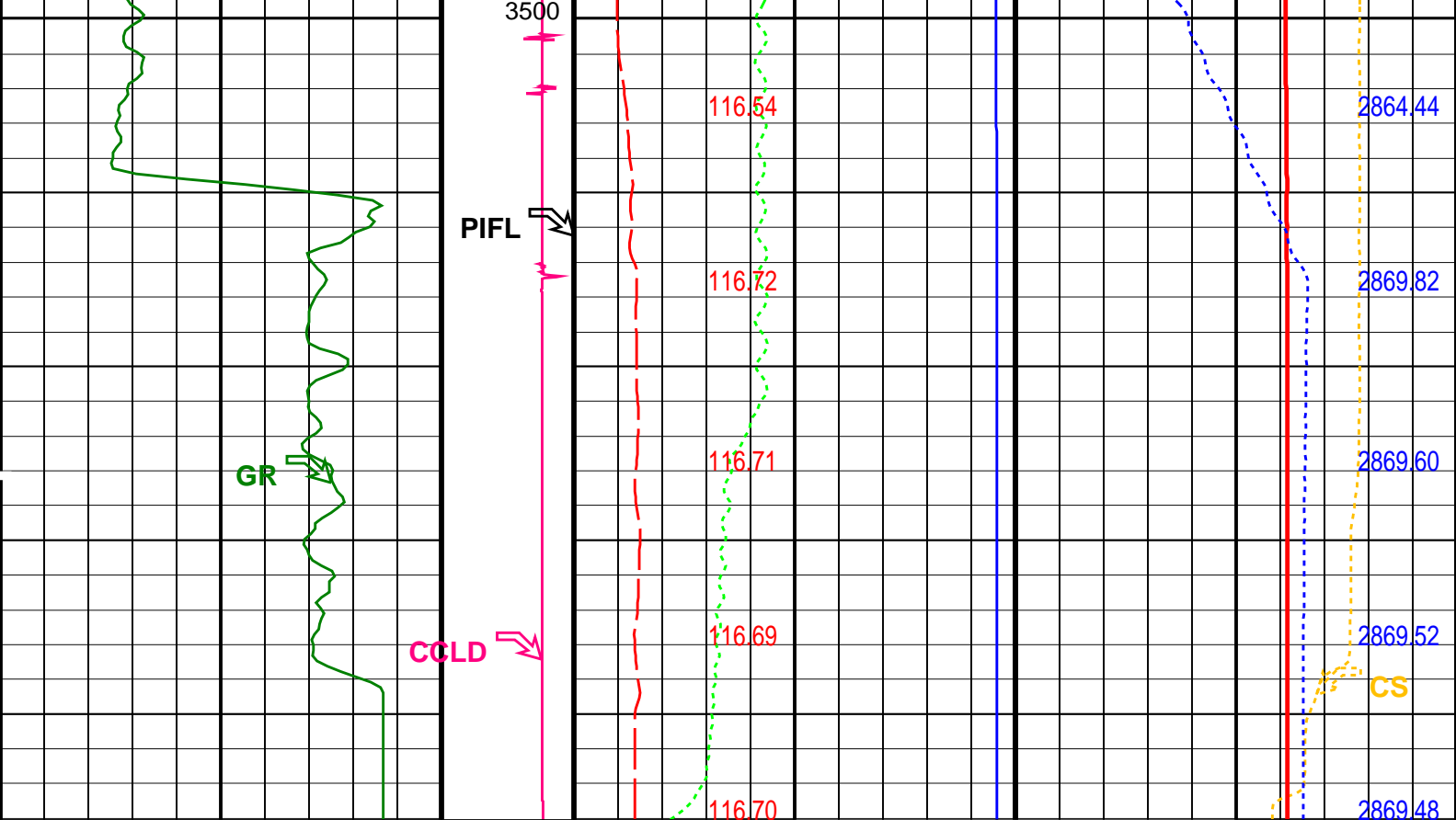
Casing Collar Locator (CCL)	Shifted Casing Collar Locator (SCCL)	Tension (TENS)
-----------------------------	--------------------------------------	----------------











Gamma Ray (GR) (GAPI)	Discriminat ed CCL (CCLD) (V)	Tension (TENS) (LBF)	Cable Speed (CS) (F/HR)
0 150	3 -1	0 3000	0 5000

Perfo Zone From PERFO_ CURVE to D3T	Well Temperature (WTEP) (DEGF)		
	0		300
	Well Temperature (WTEP) (DEGC)		Well Pressure (WPRE) (PSIA)
	Well Temperature (WTEP) (DEGF)		
	0		30
	Well Pressure (WPRE) (PSIA)		
	0		6000
	Amplified Well Pressure (WPRE) (PSIA)		
	0		60

PIP SUMMARY		
Time Mark Every 60 S		

Format: PSP_1	Vertical Scale: 1:200	Graphics File Created: 25-Feb-2006 11:49
---------------	-----------------------	--

OP System Version: 13C0-300 MCM		
PSPT-A/B	13C0-300	

Parameters		
DLIS Name	Description	Value
DO	System and Miscellaneous	
PP	Depth Offset for Playback Playback Processing	1.0 M NORMAL

## Input DLIS Files

DEFAULT	PSP_013LUP	FN:12	PRODUCER	25-Feb-2006 11:40	3522.0 M	3447.3 M
---------	------------	-------	----------	-------------------	----------	----------

## Output DLIS Files

DEFAULT	PSP_014PUP	FN:13	PRODUCER	25-Feb-2006 11:49
---------	------------	-------	----------	-------------------

Company:

Esso Australia Ltd.

Schlumberger

Well:

FLA A\_17a

Field:

Flounder

Rig:

Prod 4

Country:

Australia

4 1/2" Plug

MPBT

Setting Record