

Company: Ezzo Australia Ltd.

Well: HLA-20a

Field: Halibut

Rig: Crane / Prod 2

Country: Australia

PSP Dummy Plug  
4.5" Posiset Plug  
Dump Bailer Record

Rig: Crane / Prod 2  
Field: Halibut  
Location: Gippsland  
Well: HLA-20a  
Company: Ezzo Australia Ltd.

LOCATION

Gippsland	Elev.: K.B. 29.32 m
Basin	G.L. -90 m
Bass Strait	D.F. 29.32 m
Permanent Datum: _____	Mean Sea Level _____
Log Measured From: _____	Kelly Bushing _____
Drilling Measured From: _____	Kelly Bushing _____
State: Victoria	Max. Well Deviation 37 deg
Longitude 148 19' 07.62" E	Latitude 34 24' 20.36" S

Logging Date

24-May-2006

Run Number

2 - 5

Depth Driller

2715 m

Schlumberger Depth

2712 m - Tagged

Bottom Log Interval

2685 m

Top Log Interval

2685 m

Casing Fluid Type

Production Fluids

Salinity

Density

Fluid Level

BIT/CASING/TUBING STRING

Bit Size

6.625 in

From

2158 m

To

2835 m

Casing/Tubing Size

4.500 in

Weight

12.6 lbm/ft

Grade

13 Cr

From

2017.82 m

To

2784.85 m

Maximum Recorded Temperatures

108 degC

Logger On Bottom

24-May-2006

11:00

Unit Number

3827

AUSL

Recorded By

O. Tahmisiic, P. Tarrant

Witnessed By

B. Woodward, M. Wilson

Run 1

Run 2

F

PVT DATA

Oil Density			
Water Salinity			
Gas Gravity			
Bo			
Bw			
1/Bg			
Bubble Point Pressure			
Bubble Point Temperature			
Solution GOR			
Maximum Deviation	37 deg		

CEMENTING DATA

Primary/Squeeze	Primary
Casing String No	
Lead Cement Type	
Volume	
Density	
Water Loss	
Additives	
Tail Cement Type	
Volume	
Density	
Water Loss	
Additives	

Expected Cement Top

Logging Date

Run Number

Depth Driller

Schlumberger Depth

Bottom Log Interval

Top Log Interval

Casing Fluid Type

Salinity

Density

Fluid Level

BIT/CASING/TUBING STRING

Bit Size

From

To

Casing/Tubing Size

Weight

Grade

From

To

Maximum Recorded Temperatures

Logger On Bottom

Time

Unit Number

Location

Recorded By

Witnessed By

Run 4

Date Created: 24-MAY-2006 7:27:17

Type:	2-32ZT
Serial Number:	24031
Length:	6249.92 M
Conveyance Method:	Wireline
Rig Type:	Offshore Fixed

Set 4.5" MPBT Plug at 2685m MDKB.

CCL to Tool Bottom = 6.6m					
CCL to Top of Seal = 6.8m					
CCL Stop Depth = m MDKB					
Complete two runs with Dump Bailer; first run with water and the second					
run with cement giving approximately 1.5m of cement on top of plug.					
Day crew: B. Glover and N. Simmons					
Night crew: D. Stuckey and S. McGee					
Performed by Schlumberger.					
RUN 1			RUN 2		
SERVICE ORDER #: PROGRAM VERSION: FLUID LEVEL:			SERVICE ORDER #: PROGRAM VERSION: FLUID LEVEL:		
LOGGED INTERVAL	START	STOP	LOGGED INTERVAL	START	STOP
EQUIPMENT DESCRIPTION					
RUN 1			RUN 2		
SURFACE EQUIPMENT			SURFACE EQUIPMENT		
MPBM 47			WITM (SHM)		
DOWNHOLE EQUIPMENT			DOWNHOLE EQUIPMENT		
<div>MH-22 MH-22 753</div> <div>CCL-L CCL-L 2975</div> <div>MPSU-CA MPSU-CA 1011</div> <div>CCL Tachomete Cable Cur Head Volt Tension</div> <div>9.97</div> <div>9.64</div> <div>9.18</div> <div>TOOL ZERO</div>			<div>MH-SWHS-A MH-SWHS-A 794</div> <div>CCL-L CCL-L 2975</div> <div>EQF-43 EQF-43 201</div> <div>AH-X-over</div> <div>SHM_GUN GUN-Dump bailer - 32ft</div> <div>13.67</div> <div>13.19</div> <div>12.73</div> <div>10.90</div> <div>10.65</div> <div>Tension CCL</div> <div>TOOL ZERO</div>		

MPEX-EA\_S  
MPEX-EA\_S

2.77

TOOL BOTTOM

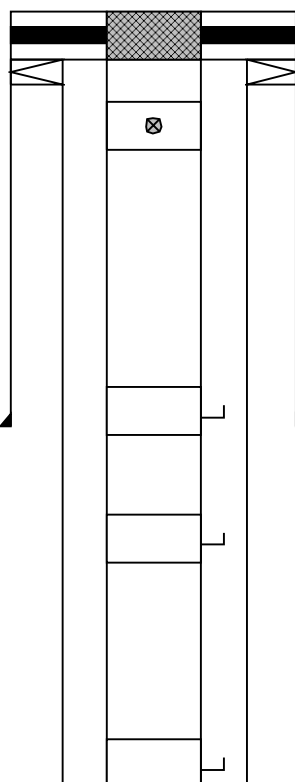
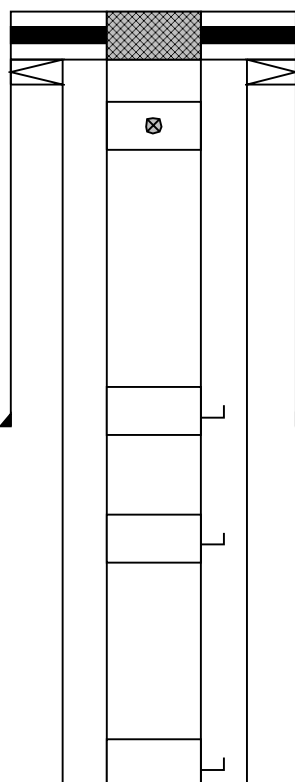
MAXIMUM STRING DIAMETER 2.13 IN  
MEASUREMENTS RELATIVE TO TOOL ZERO  
ALL LENGTHS IN METERS

AH-Solenoid  
AH-Solenoid

0.89

TOOL BOTTOM

MAXIMUM STRING DIAMETER 2.13 IN  
MEASUREMENTS RELATIVE TO TOOL ZERO  
ALL LENGTHS IN METERS

Production String	(in)		(m)	Well Schematic	(m)	(in)		Casing String
	OD	ID	MD		MD	OD	ID	
Tubing Hanger	10.750	3.500	12.2		11.9	10.750	7.000	Casing String Liner Hanger
Tubing	3.500		12.2		11.9	10.750	7.000	
Shutin Valve	3.500		145.5		11.9	10.750	7.000	
Gas Lift Mandrel	3.500		840.2		548.8	10.750		Casing Shoe
Gas Lift Mandrel	3.500		1275.5					
Gas Lift Mandrel	3.500		1749.3					

2009.5	4.500	
2009.5	7.000	4.500
2158.0	7.000	

Casing String  
Liner Hanger  
Casing Shoe

2785.0	4.500
2784.0	

Casing Shoe  
PBYD



MAXIS Field Log

Company: \_\_\_\_\_ Well: \_\_\_\_\_

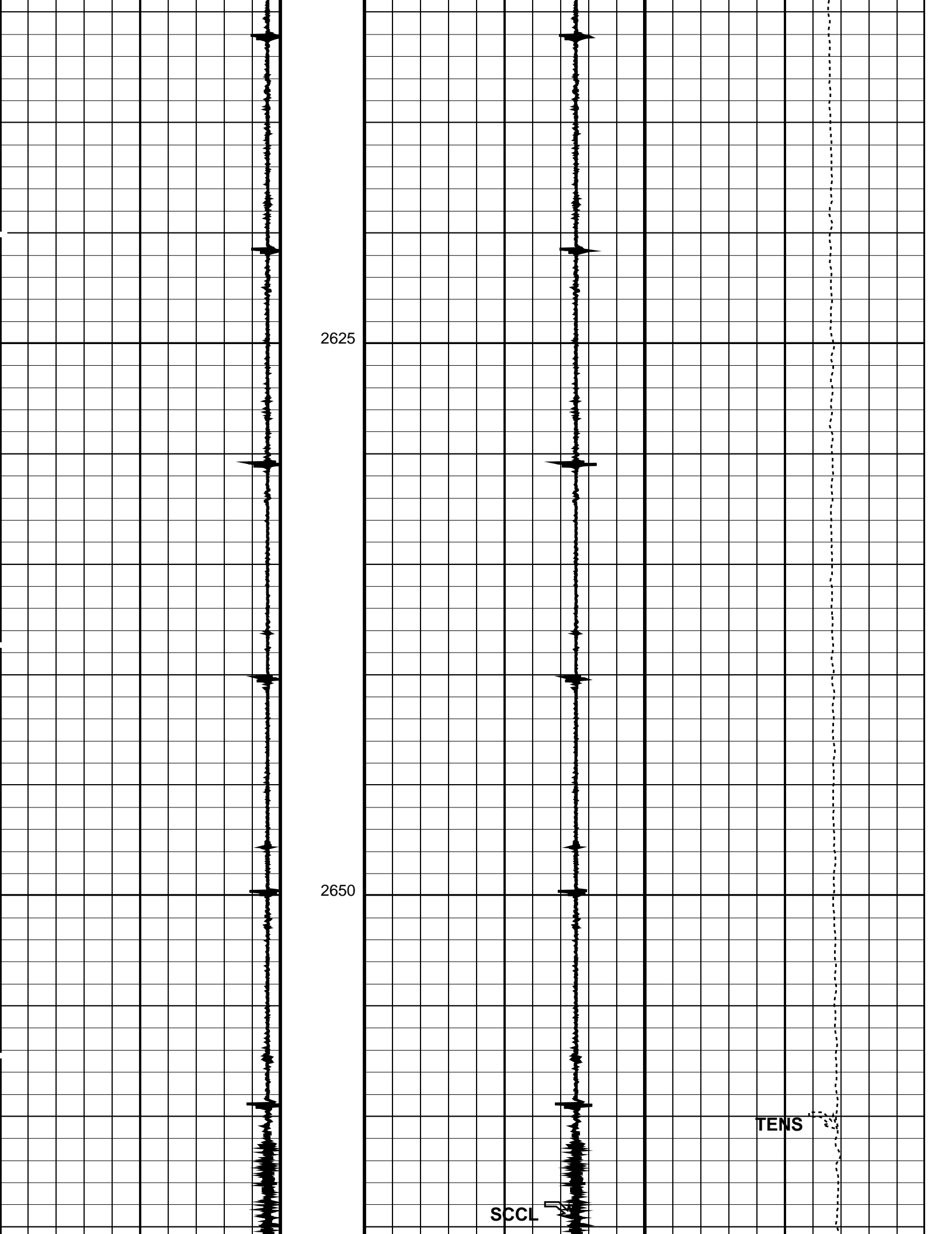
DEFAULT	PERFO 054LUP	FN:52	PRODUCER	25-May-2006 05:13	2674.3 M	2608.9 M
---------	--------------	-------	----------	-------------------	----------	----------

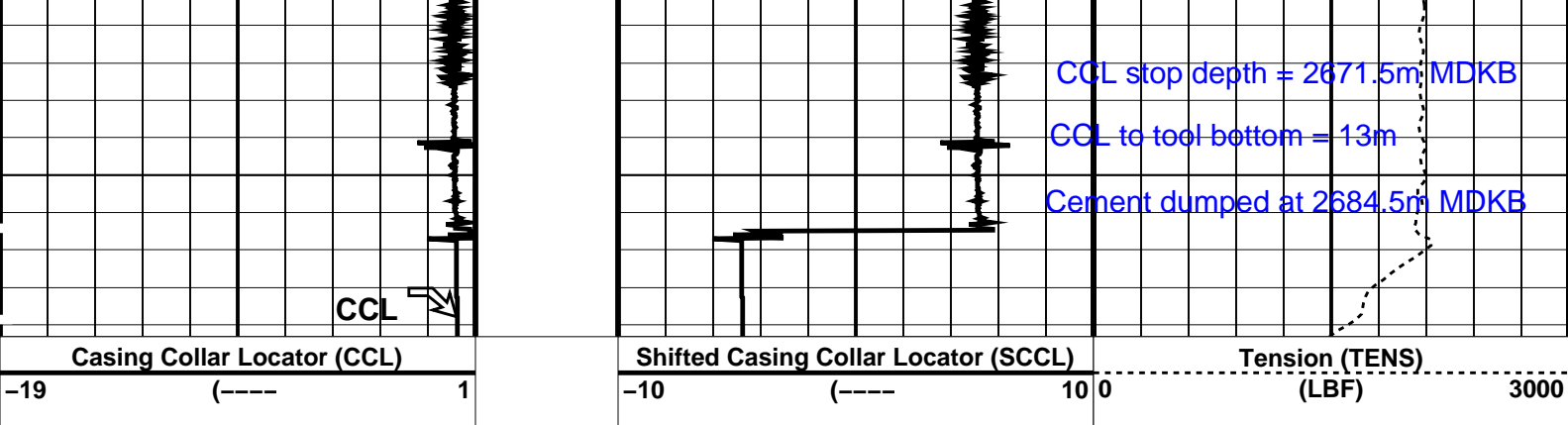
## MCM

SHM GUN	14C0-302	CCL-L	14C0-302
---------	----------	-------	----------

**Time Mark Every 60 S**

Casing Collar Locator (CCL)		Shifted Casing Collar Locator (SCCL)		Tension (TENS)	
-19	(---- 1	-10	(---- 10 0	(LBF)	3000





PIP SUMMARY

Time Mark Every 60 S

Parameters

DLIS Name	Description	Value
CCL-L: Casing Collar Locator		
CCLD	CCL reset delay	12 IN
CCLT	CCL Detection Level	0.3 V

Format: PERFO      Vertical Scale: 1:200      Graphics File Created: 25-May-2006 05:13

OP System Version: 14C0-302

MCM

SHM\_GUN      14C0-302      CCL-L      14C0-302

Output DLIS Files

DEFAULT      PERFO\_054LUP      FN:52      PRODUCER      25-May-2006 05:13

Schlumberger

2 1/8" Dump Bailer  
Run 1 – Water

MAXIS Field Log

Company:      Well:

Output DLIS Files

DEFAULT      PERFO\_050LUP      FN:48      PRODUCER      25-May-2006 00:51      2673.9 M      2617.6 M

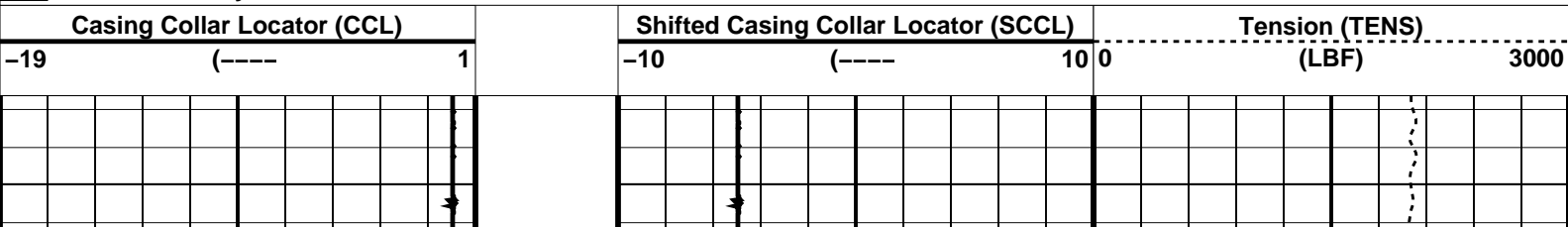
OP System Version: 14C0-302

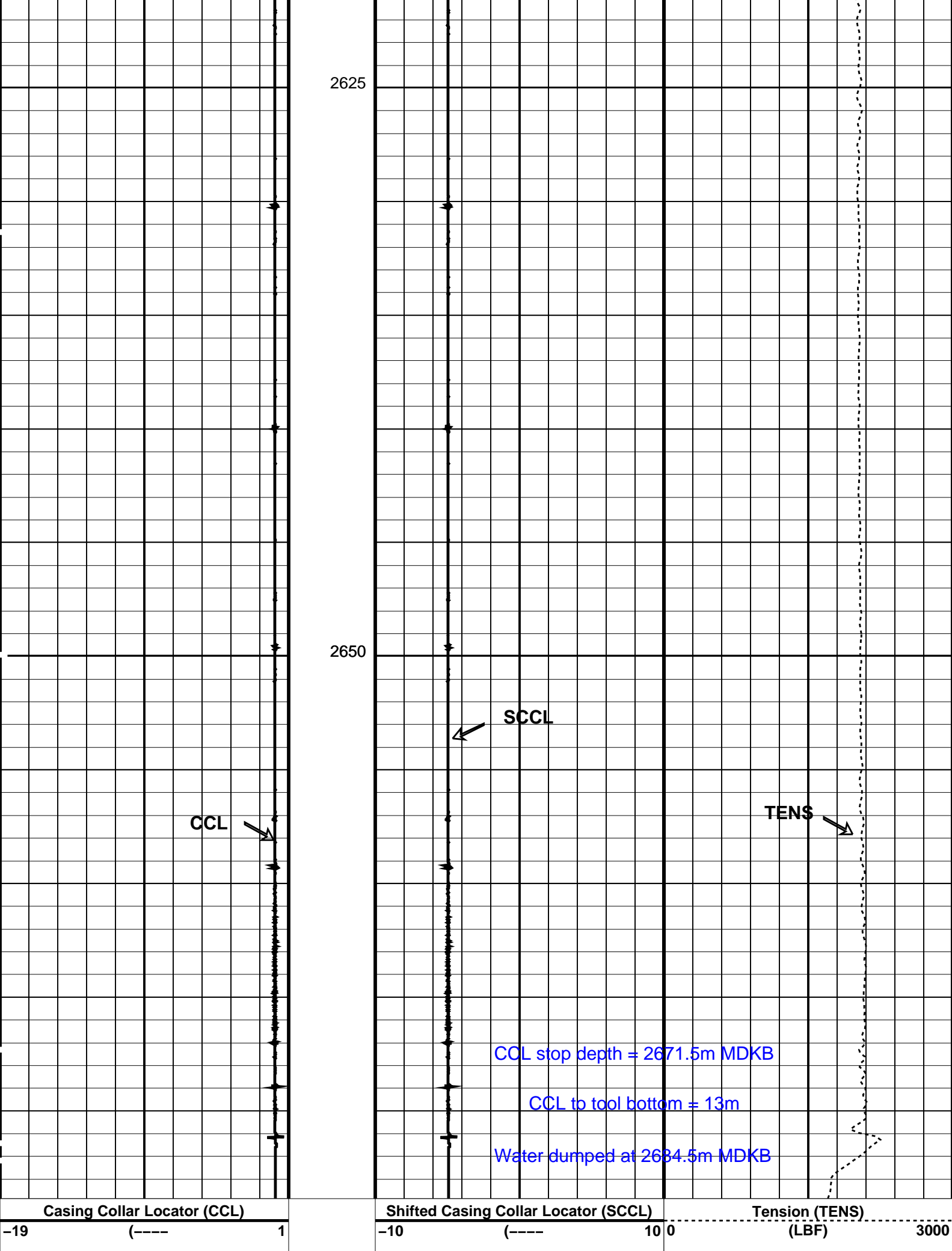
MCM

SHM\_GUN      14C0-302      CCL-L      14C0-302

PIP SUMMARY


Time Mark Every 60 S







Time Mark Every 60 S			
Parameters			
DLIS Name	Description	Value	
CCLD	CCL-L: Casing Collar Locator	12	IN
CCLT	CCL reset delay	0.3	V
CCLT	CCL Detection Level		
Format: PERFO	Vertical Scale: 1:200	Graphics File Created: 25-May-2006 00:51	
OP System Version: 14C0-302			
MCM			
SHM_GUN	14C0-302	CCL-L	14C0-302
Output DLIS Files			
DEFAULT	PERFO_050LUP	FN:48	PRODUCER 25-May-2006 00:51

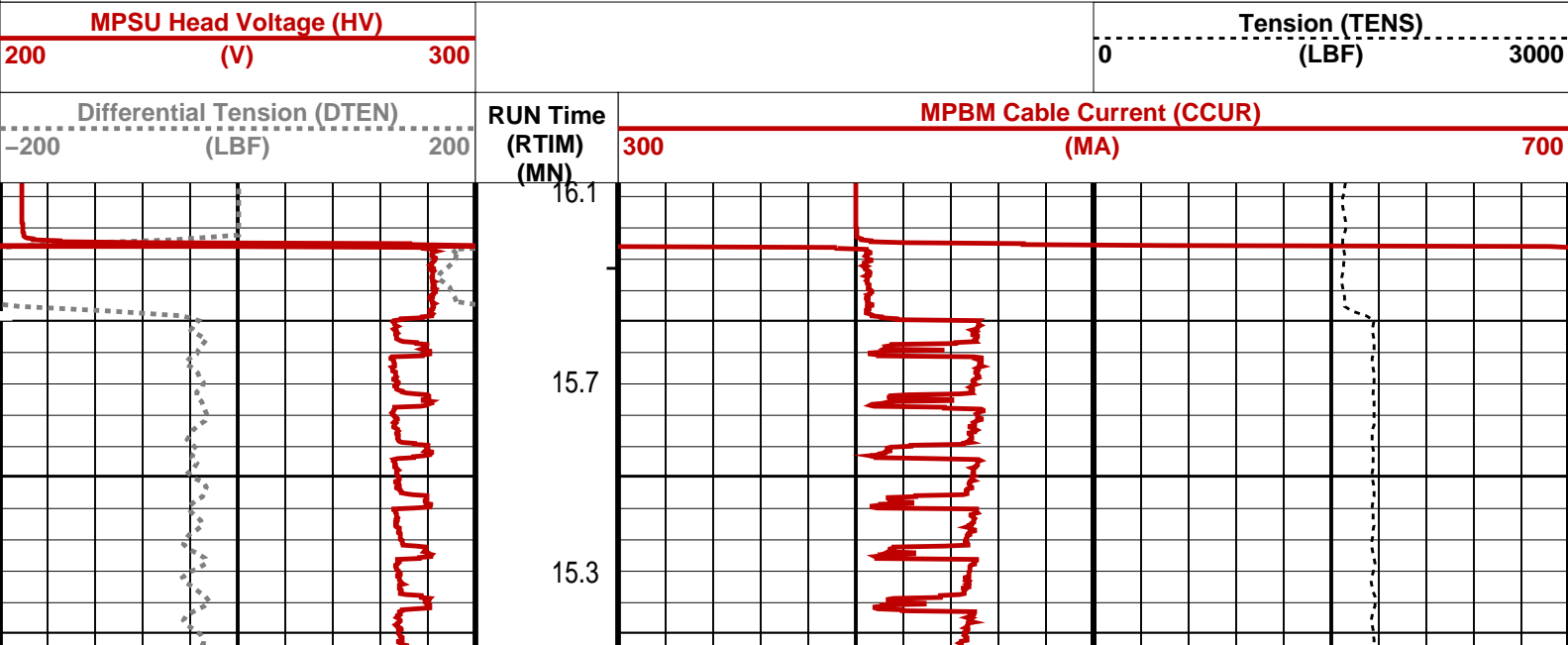


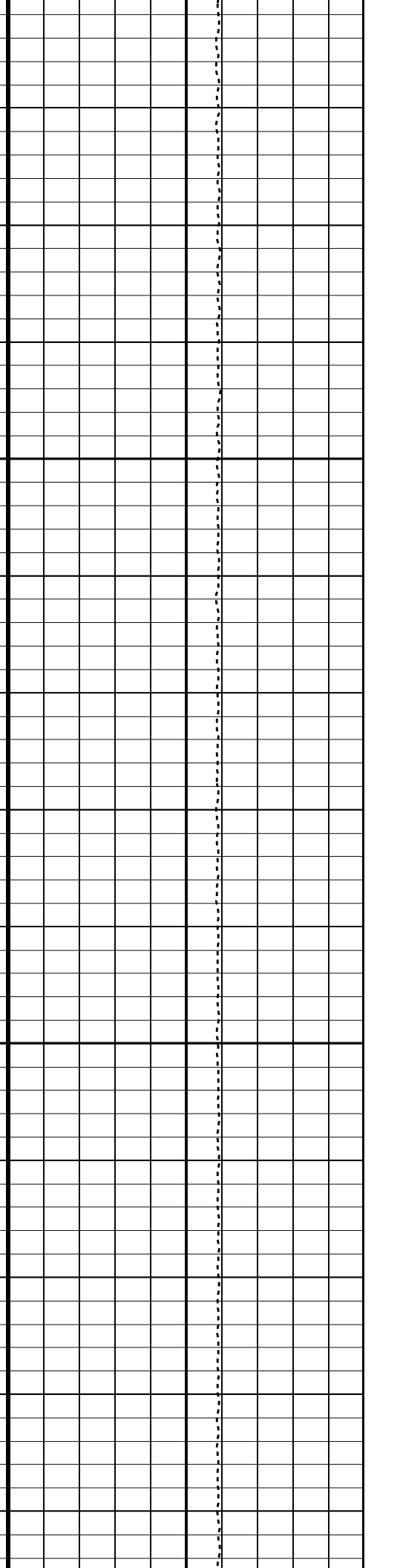
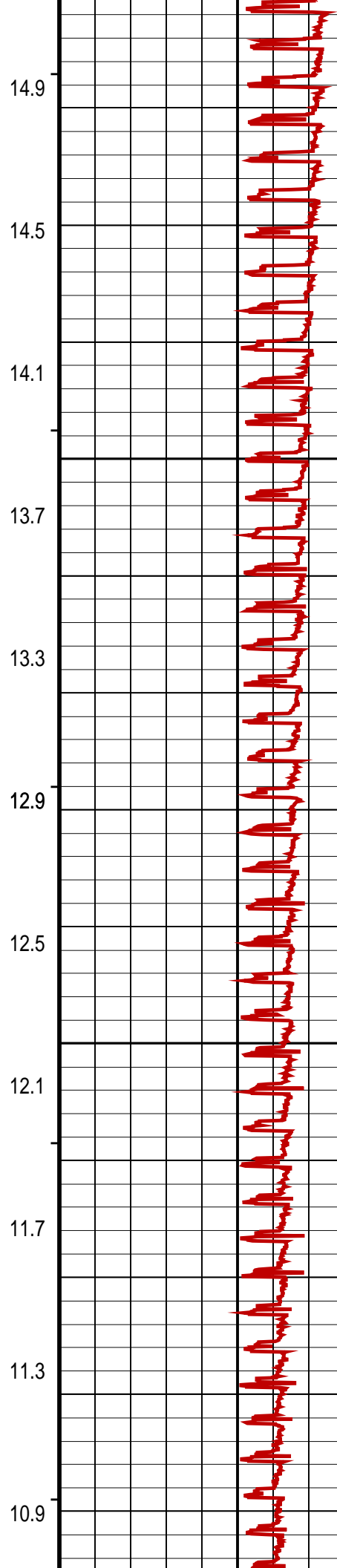
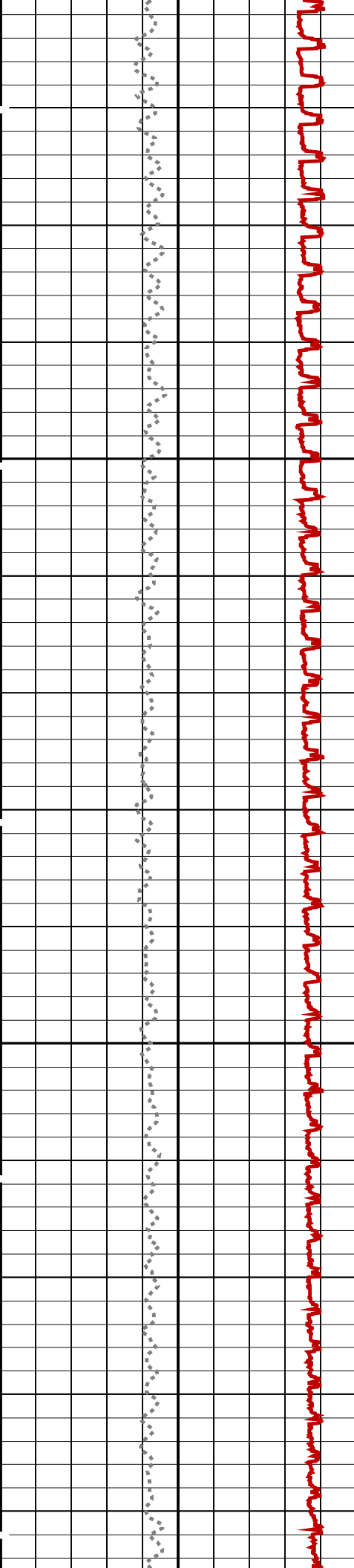
4.5" MPBT Plug  
Setting Pass

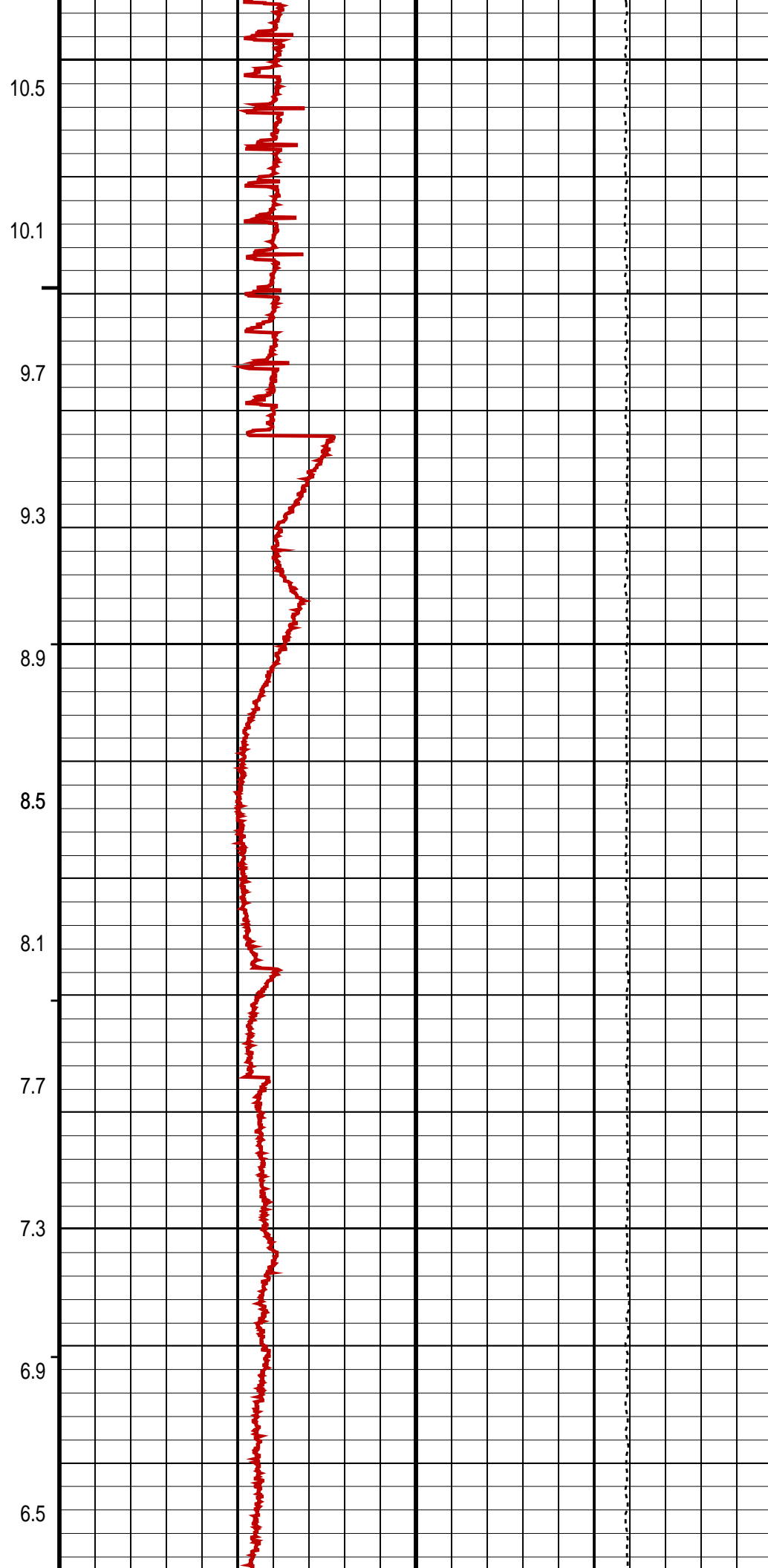
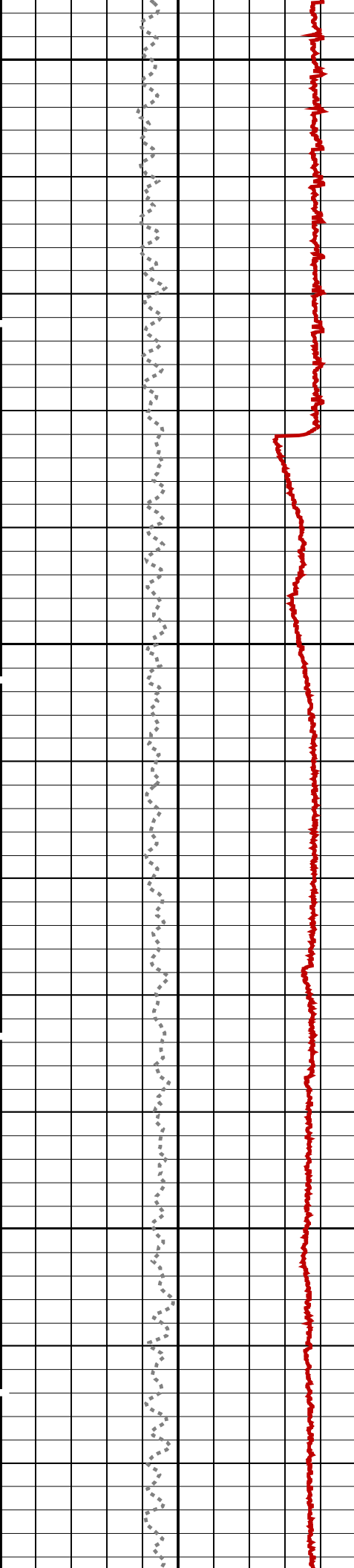
MAXIS Field Log

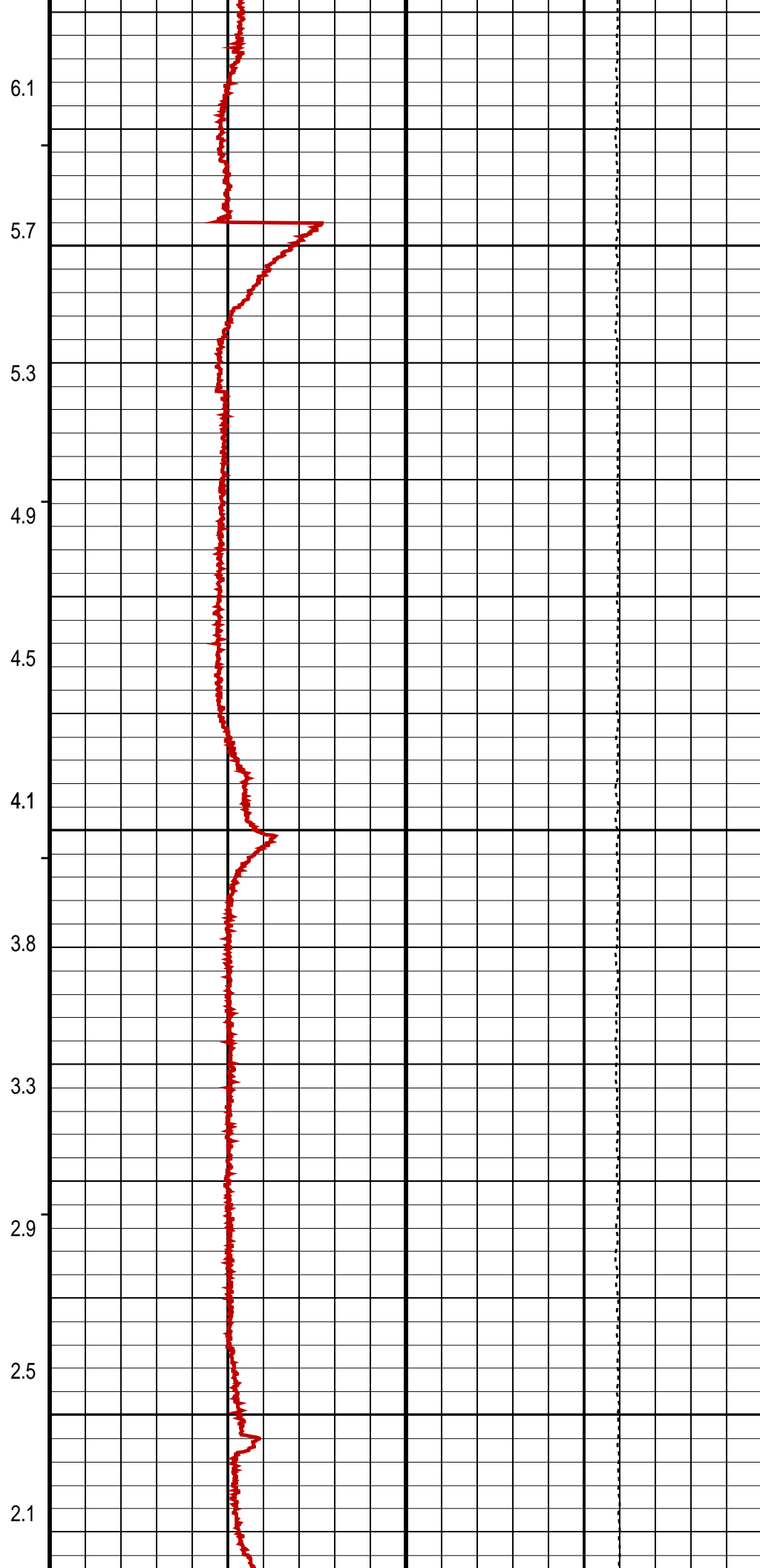
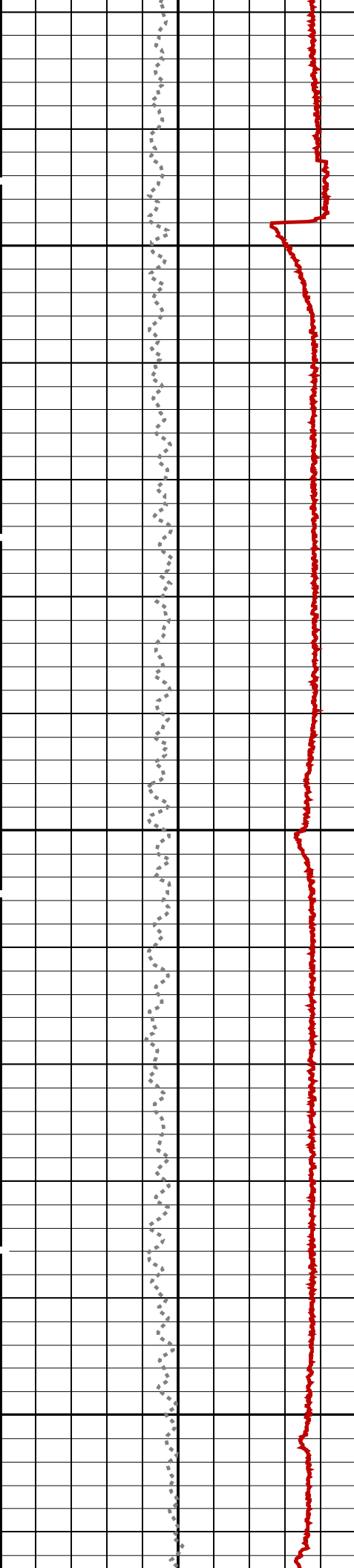
Output DLIS Files			
DEFAULT	CCL_045LUP	FN:43	PRODUCER 24-May-2006 20:34 12192.0 M 11940.5 M
OP System Version: 14C0-302			
MCM			
MPEX-EA_S	14C0-302	MPSU-CA	14C0-302
CCL-L	14C0-302		

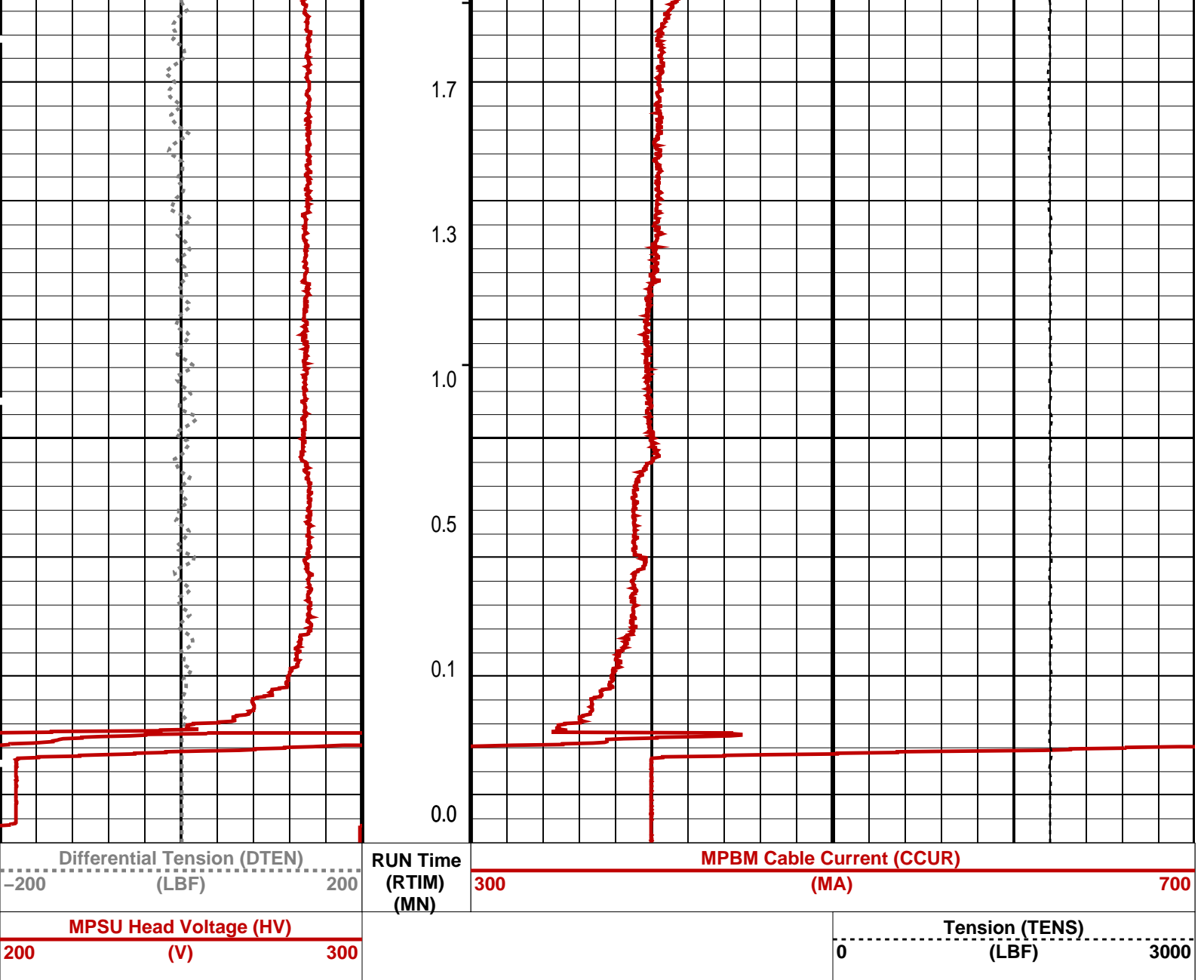
PIP SUMMARY	
↵ MPSU Run Time Every 1 MN	
↵ MPSU Run Time Every 10 MN	











**PIP SUMMARY**  
└ MPSU Run Time Every 1 MN  
└ MPSU Run Time Every 10 MN  
Time Mark Every 60 S

Parameters			
DLIS Name	Description		Value
MPSU-CA: MECHANICAL PLUGBACK SETTING UNIT			
IPUMP	Intensifier Pump		TRUE
Format: MPBT	Vertical Scale: 1:240	Graphics File Created: 24-May-2006 20:34	
OP System Version: 14C0-302			
MCM			
MPEX-EA_S	14C0-302	MPSU-CA	14C0-302
CCL-L	14C0-302		
Output DLIS Files			
DEFAULT	CCL_045LUP	FN:43	PRODUCER 24-May-2006 20:34

MAXIS Field Log

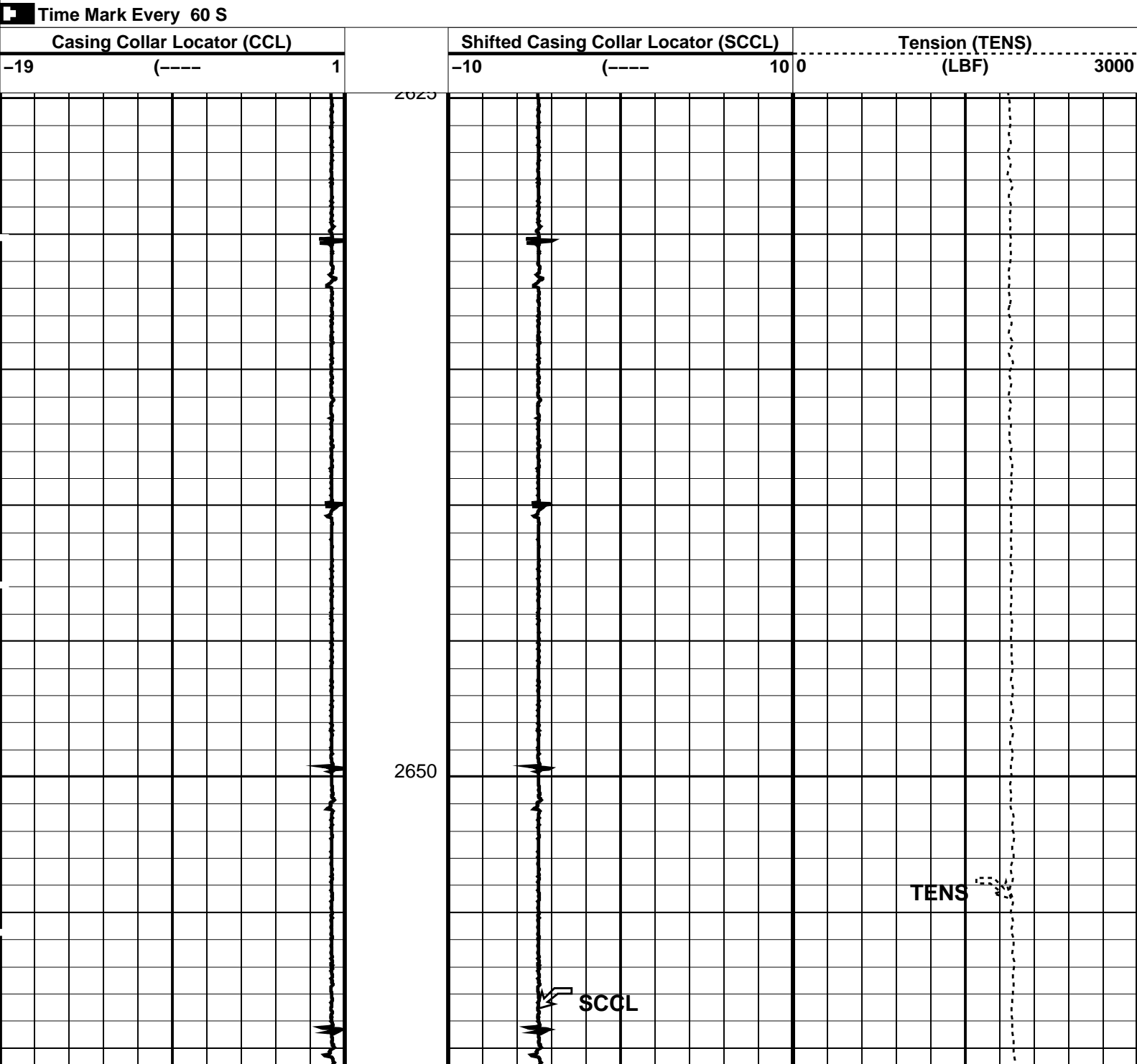
Output DLIS Files

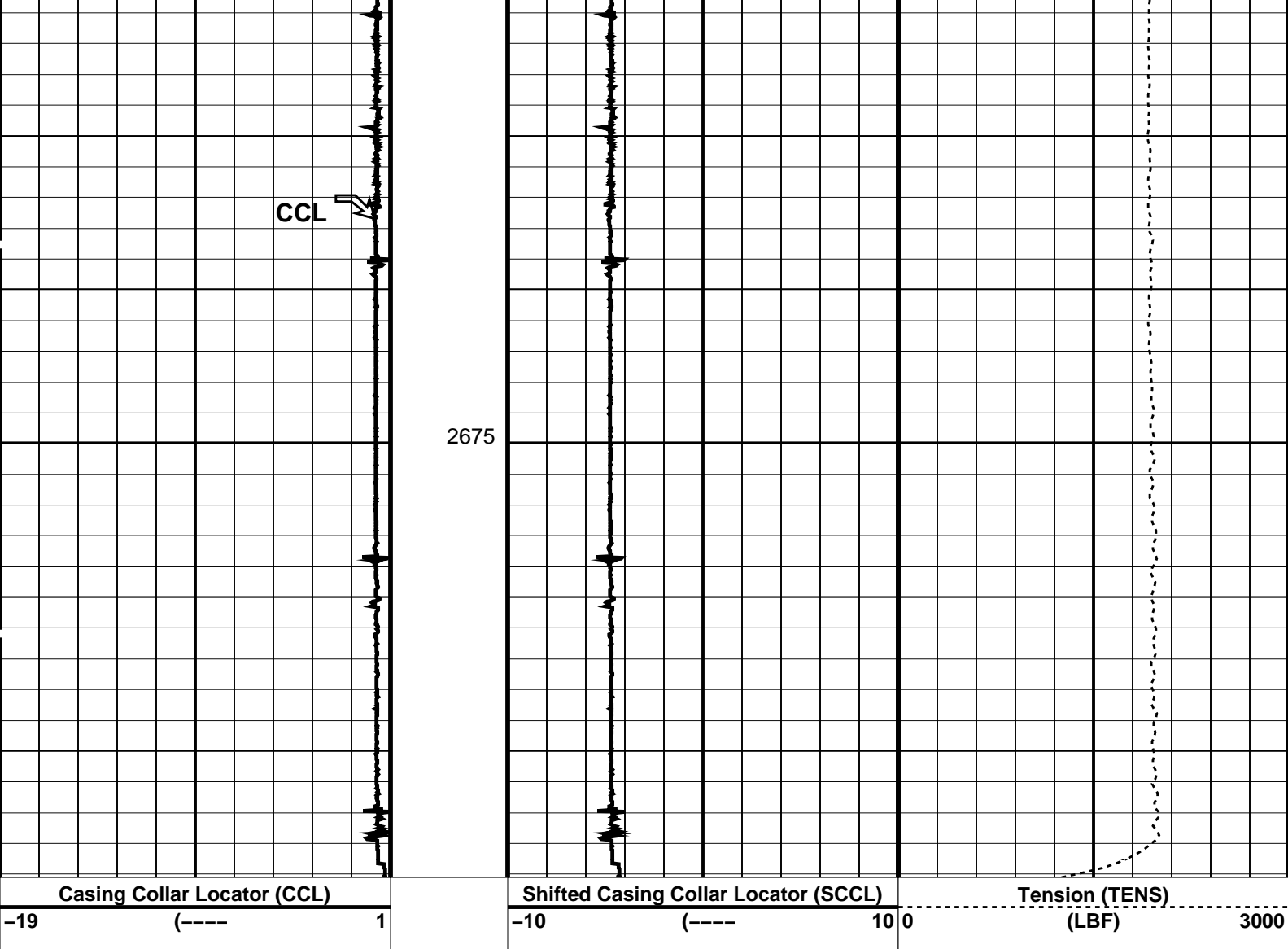
DEFAULT CCL\_043LUP FN:41 PRODUCER 24-May-2006 20:17 2689.1 M 2624.7 M

OP System Version: 14C0-302  
MCM

MPEX-EA\_S 14C0-302  
CCL-L 14C0-302 MPSU-CA 14C0-302

PIP SUMMARY





PIP SUMMARY

Time Mark Every 60 S

Parameters		
DLIS Name	Description	Value
CCL-L	Casing Collar Locator	
CCLD	CCL reset delay	12 IN
CCLT	CCL Detection Level	0.3 V

Format: PERFO Vertical Scale: 1:200 Graphics File Created: 24-May-2006 20:17

OP System Version: 14C0-302			
MCM			
MPEX-EA_S	14C0-302	MPSU-CA	14C0-302
CCL-L	14C0-302		

Output DLIS Files			
DEFAULT	CCL_043LUP	FN:41 PRODUCER	24-May-2006 20:17

## Output DLIS Files

DEFAULT

PERFO\_010LUP

FN:9

PRODUCER

24-May-2006 07:44 2696.1 M

2625.4 M

## OP System Version: 14C0-302

MCM

MWP\_GUN

14C0-302

MWPT-CA

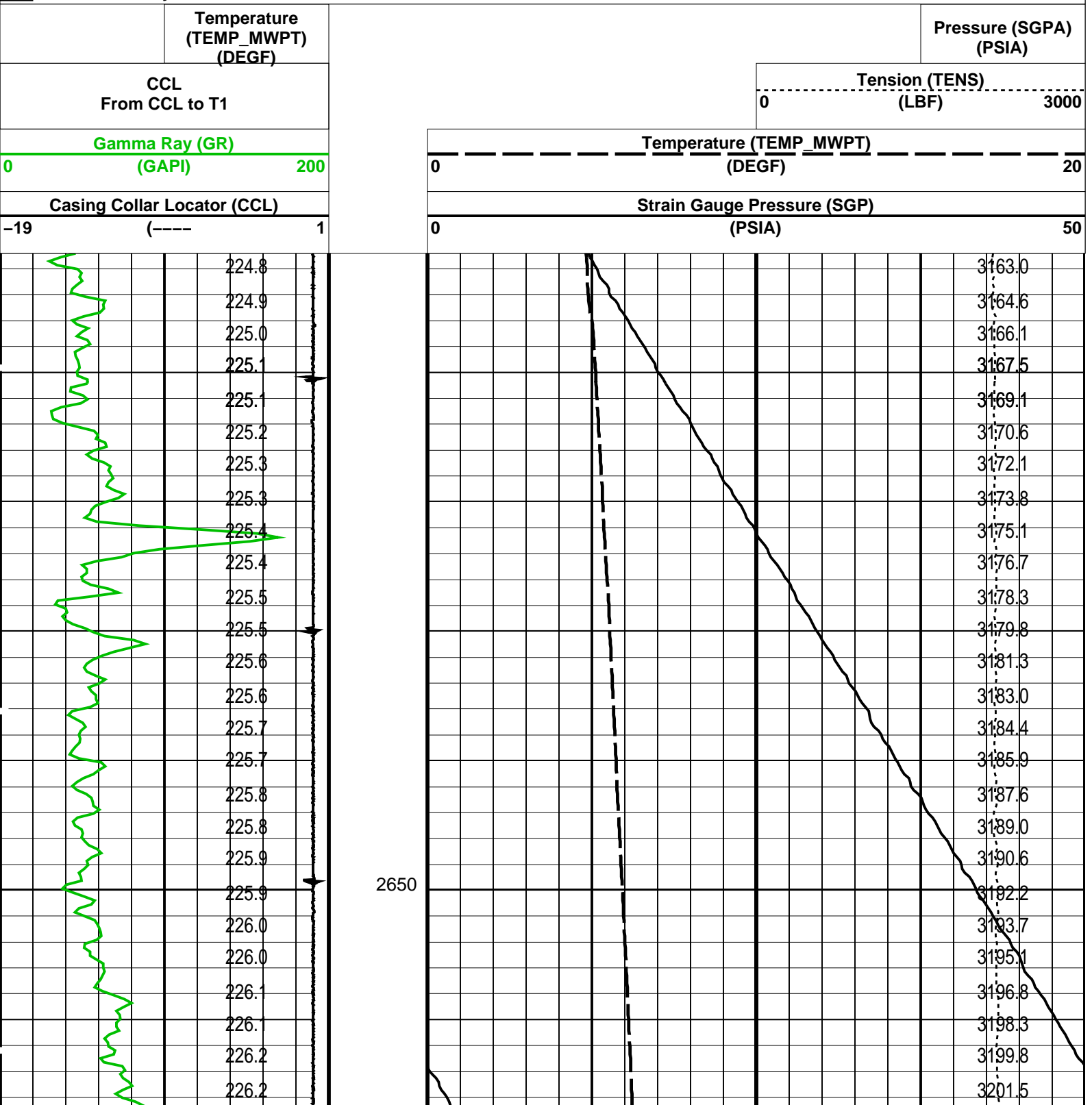
14C0-302

MWGT-AA

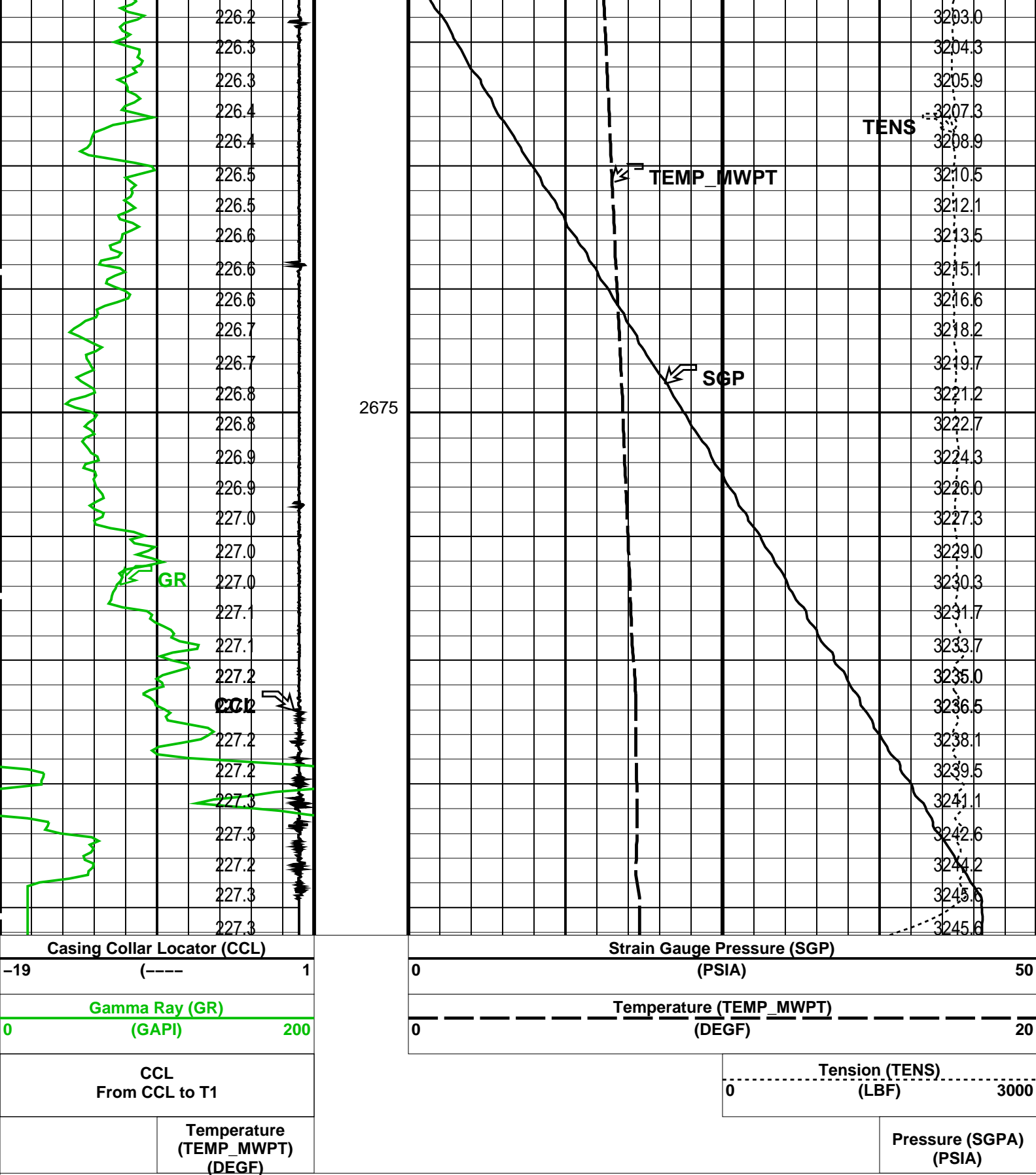
14C0-302

## PIP SUMMARY

Time Mark Every 60 S







PIP SUMMARY

Time Mark Every 60 S

Parameters		
DLIS Name	Description	Value
MWPT-CA: MEASUREMENT WHILE PERFORATING TOOL		
DEVI_FL_CORR	Deviation Angle for Flow Line Correction	0 DEG
FLD	Flow Line Density	1 G/C3
MWPT_NULL_SOURCE	MWPT NULL Temperature Source	TEMS

MWPT_NULL_TEMP	MWPT NULL Temperature	0.0	DEGC
Format: MWP	Vertical Scale: 1:200	Graphics File Created: 24-May-2006 07:44	
OP System Version: 14C0-302			
MCM			
MWP_GUN	14C0-302	MWPT-CA	14C0-302
MWGT-AA	14C0-302		
Output DLIS Files			
DEFAULT	PERFO_010LUP	FN:9	PRODUCER 24-May-2006 07:44

Company:	Esso Australia Ltd.	<b>Schlumberger</b>
Well:	HLA-20a	
Field:	Halibut	
Rig:	Crane / Prod 2	
Country:	Australia	
	PSP Dummy Plug	
	4.5" Posiset Plug	
	Dump Bailer Record	