

Company: **Eso Australia**

Well: **BMA 21a**

Field: **Bream**

Rig: **ISS Rig 22**

Country: **Australia**

2 1/2" PowerCutter

Tubing Cut Record

2 March 2007

Rig: ISS Rig 22

Field: Bream

Location: Bass Strait

Well: BMA 21a

Company: Eso Australia

LOCATION

Bass Strait

Gippsland

Basin

Elev.: K.B. 33.5 m

G.L. -59.4 m

D.F. 32 m

Permanent Datum: MSL

Log Measured From: Drill Floor

Drilling Measured From: Kelly Bushing

Elev.: 0 m

32.0 m above Perm. Datum

State: Victoria

Max. Well Deviation

Longitude 147°46'15"E

Latitude 38°30'4"S

Logging Date	2-Mar-2007		
Run Number	1		
Depth Driller	2906.3 m		
Schlumberger Depth	2745 m		
Bottom Log Interval	2728 m		
Top Log Interval	2728 m		
Casing Fluid Type	Inhibited Seawater		
Salinity			
Density	1.02 g/cm3		
Fluid Level			
BIT/CASING/TUBING STRING			
Bit Size	8.500 in		
From	2354 m		
To	2906.3 m		
Casing/Tubing Size	3.500 in		
Weight	9.3 lbn/ft		
Grade	J-55		
From	11 m		
To	2751.23 m		
Maximum Recorded Temperatures			
Logger On Bottom	2-Mar-2006		7:15
Unit Number	3827	AUSL	
Recorded By	B.Donahoe, C.Rowand		
Witnessed By	Mr M. Wilson, Mr B. Woodward		

		Run 1	Run 2	F
PVT DATA				
Oil Density				
Water Salinity				
Gas Gravity				
Bo				
Bw				
1/Bg				
Bubble Point Pressure				
Bubble Point Temperature				
Solution GOR				
Maximum Deviation				
CEMENTING DATA				
Primary/Squeeze		Primary		
Casing String No				
Lead Cement Type				
Volume				
Density				
Water Loss				
Additives				
Tail Cement Type				
Volume				
Density				
Water Loss				
Additives				
Expected Cement Top				
Logging Date				
Run Number				
Depth Driller				
Schlumberger Depth				
Bottom Log Interval				
Top Log Interval				
Casing Fluid Type				
Salinity				
Density				
Fluid Level				
BIT/CASING/TUBING STRING				
Bit Size				
From				
To				
Casing/Tubing Size				
Weight				
Grade				
From				
To				
Maximum Recorded Temperatures				
Logger On Bottom				
Unit Number				
Recorded By				
Witnessed By				

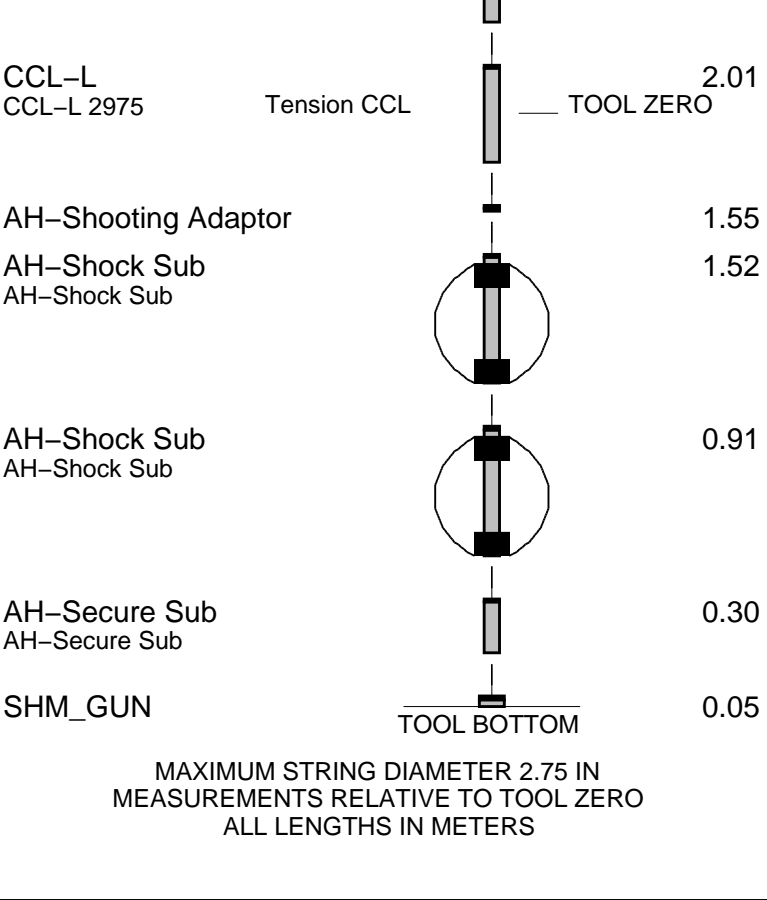


Required cutting depth = 2728m MDKB					
CCL to Power Cutter = 1.9m					
CCL stop depth = 2726.1m MDKB					
Schlumberger Crew:					
Operators					
Days: Dave Stuckey, Zeb Casey					
Nights: Peter Battams, Gerald Brady					

RUN 1			RUN 2		
SERVICE ORDER #:			SERVICE ORDER #:		
PROGRAM VERSION:			PROGRAM VERSION:		
FLUID LEVEL:			FLUID LEVEL:		
LOGGED INTERVAL	START	STOP	LOGGED INTERVAL	START	STOP

EQUIPMENT DESCRIPTION					
RUN 1			RUN 2		

SURFACE EQUIPMENT			
WITM (SHM)			
DOWNHOLE EQUIPMENT			



Client: Esso Australia

Well: BMA-21a

Field: Bream

State: Victoria

Country: Australia

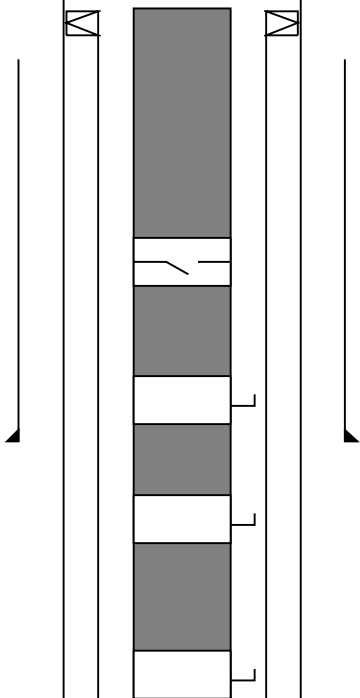
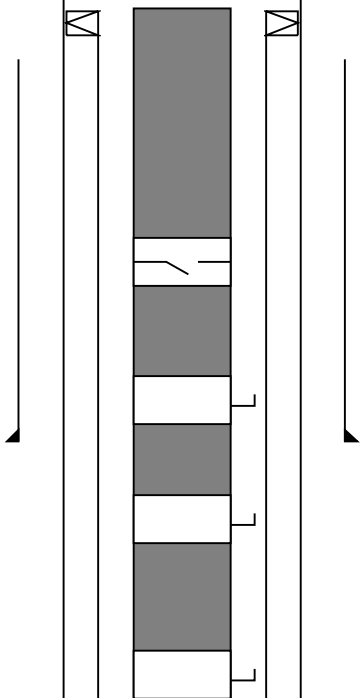
Rig Name: ISS Rig 22

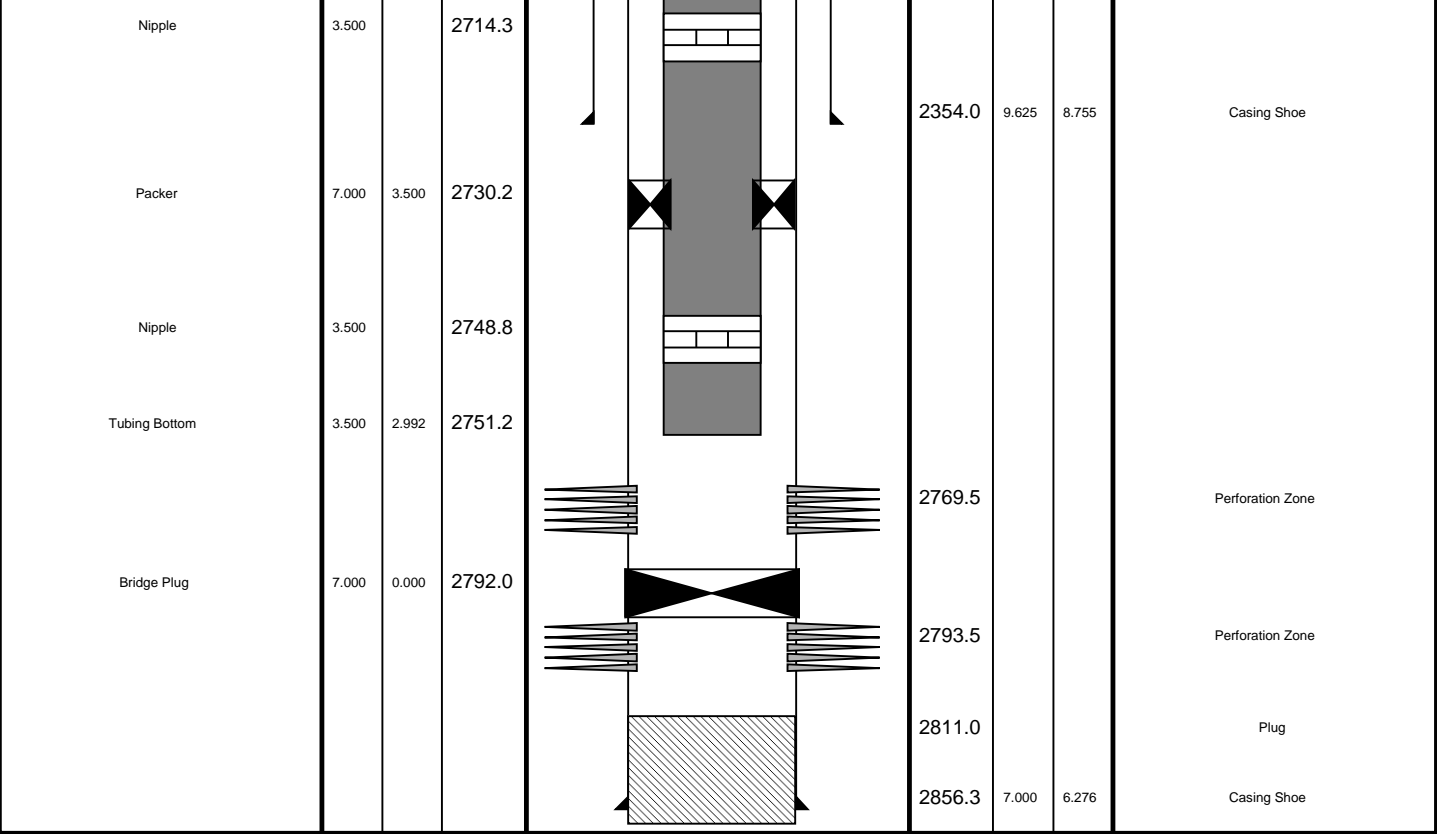
Reference Datum:

Elevation:

Drawing Date: 3/1/2007

API #:

Production String	(in)		(m)	Well Schematic	(m)		(in)	Casing String
	OD	ID	MD		MD	OD	ID	
Tubing	3.500	2.992	11.2		0.0	9.625	8.755	Casing String Casing String Liner Hanger Casing String
					0.2	7.000	6.276	
					0.2	9.625	7.000	
					12.9	13.375	12.615	
SSSV	3.500		455.7		950.9	13.375	12.615	Casing Shoe
Side Pocket Mandrel	3.500		970.2					
Side Pocket Mandrel	3.500		1897.0					
Side Pocket Mandrel	3.500		2291.5					



2 1/2" PowerCutter  
Cutting Pass

MAXIS Field Log

PERFO2 Operational Summary Listing

Device	Status	Req Depth ( M)	Obs Depth ( M)	Time Used
CUTTER	Used	2728.0	2728.0	Fri Mar 02 07:16:40 2007

Company: Esso Australia

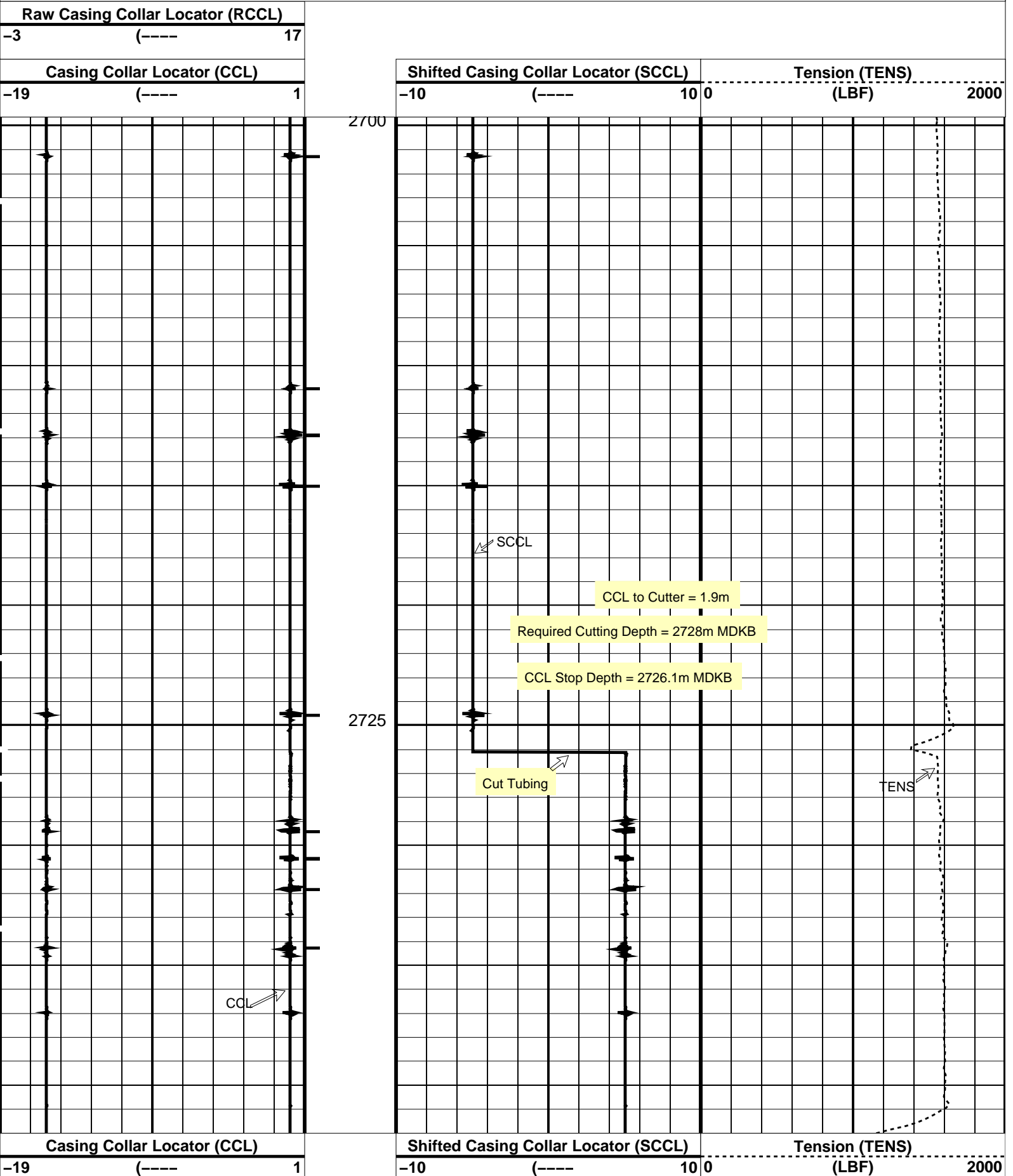
Well: BMA 21a

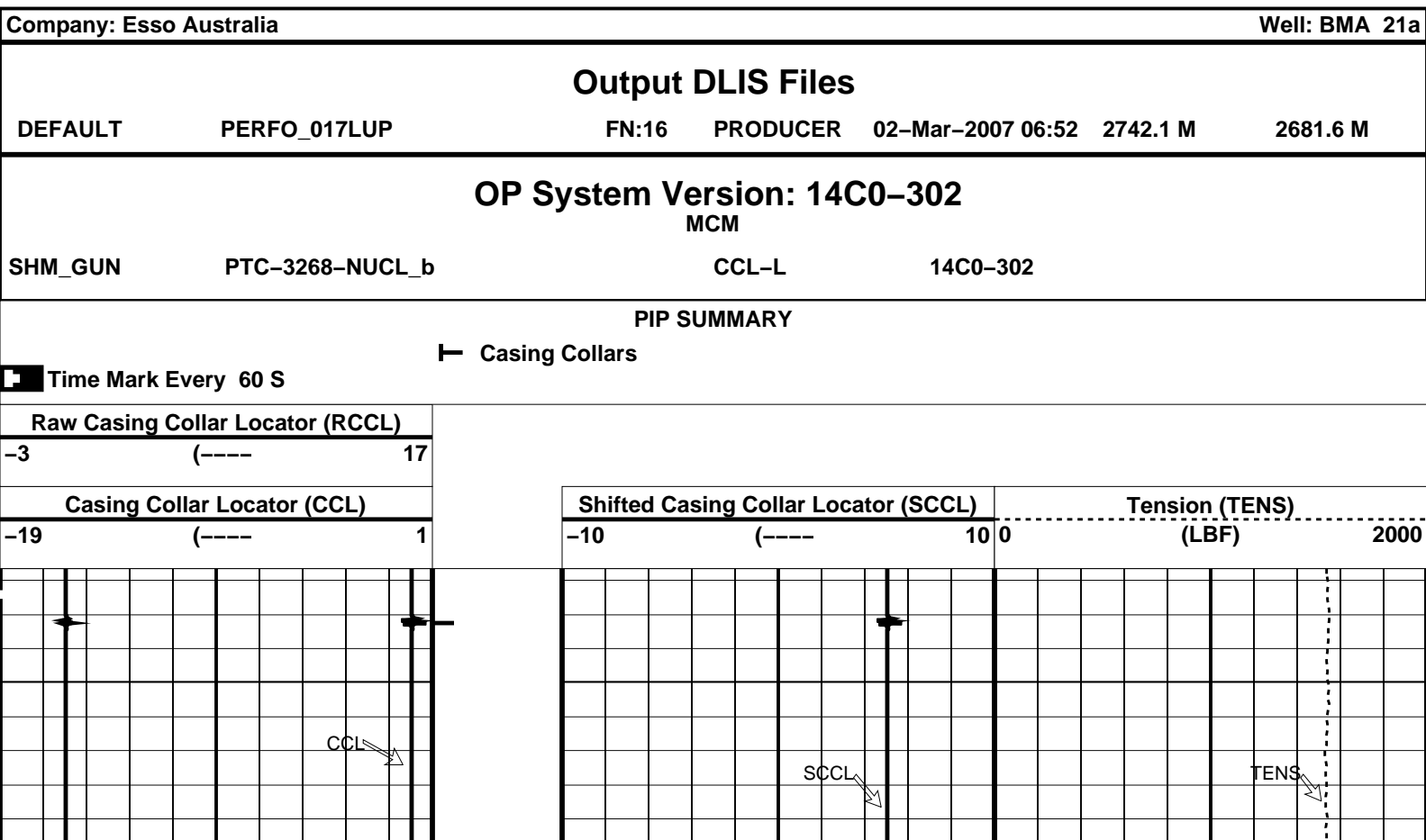
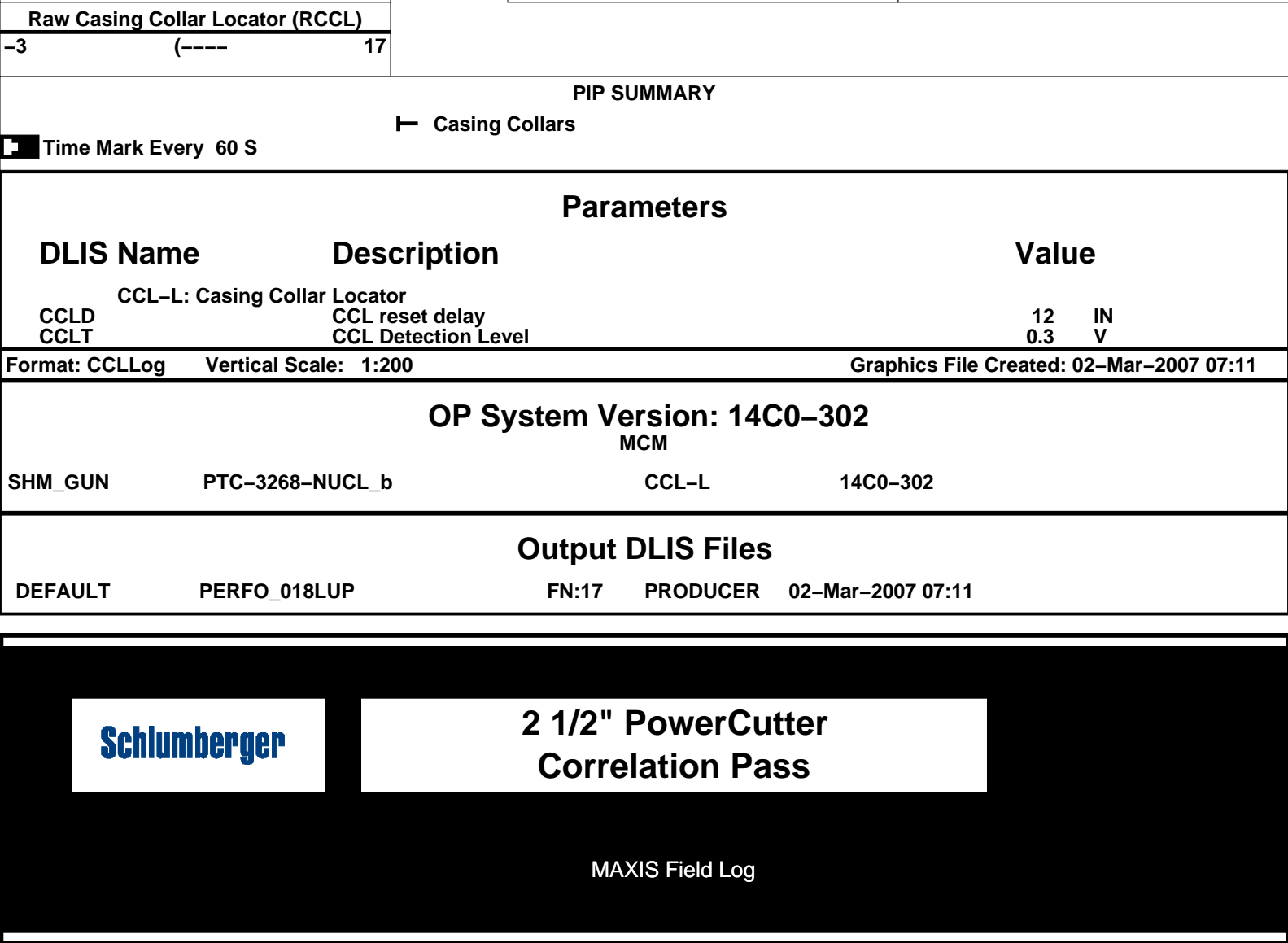
Output DLIS Files					
DEFAULT	PERFO_018LUP	FN:17	PRODUCER	02-Mar-2007 07:11	2742.0 M 2699.6 M

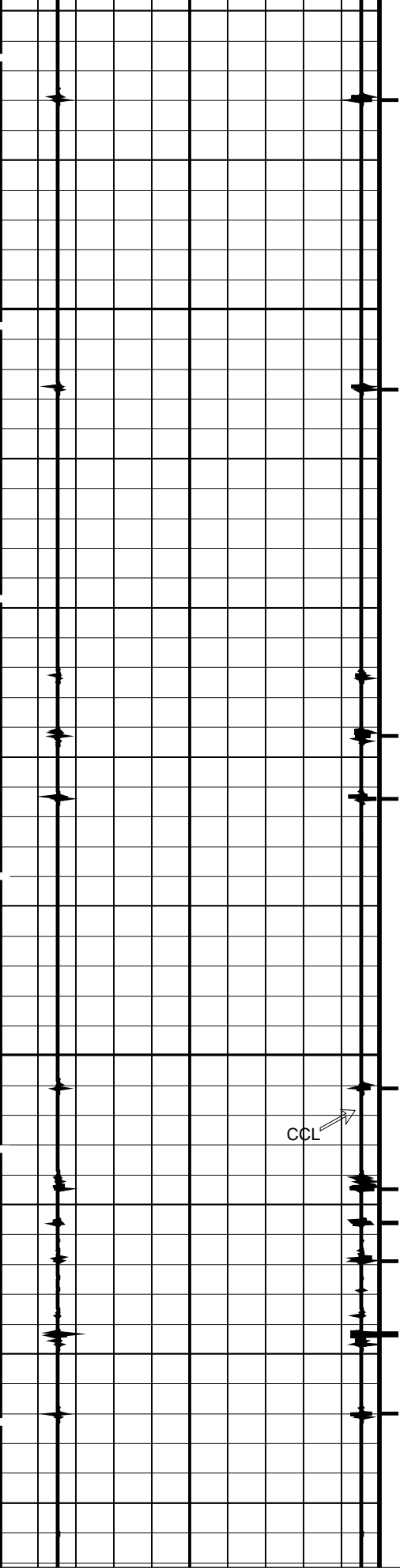
PIP SUMMARY

└─ Casing Collars

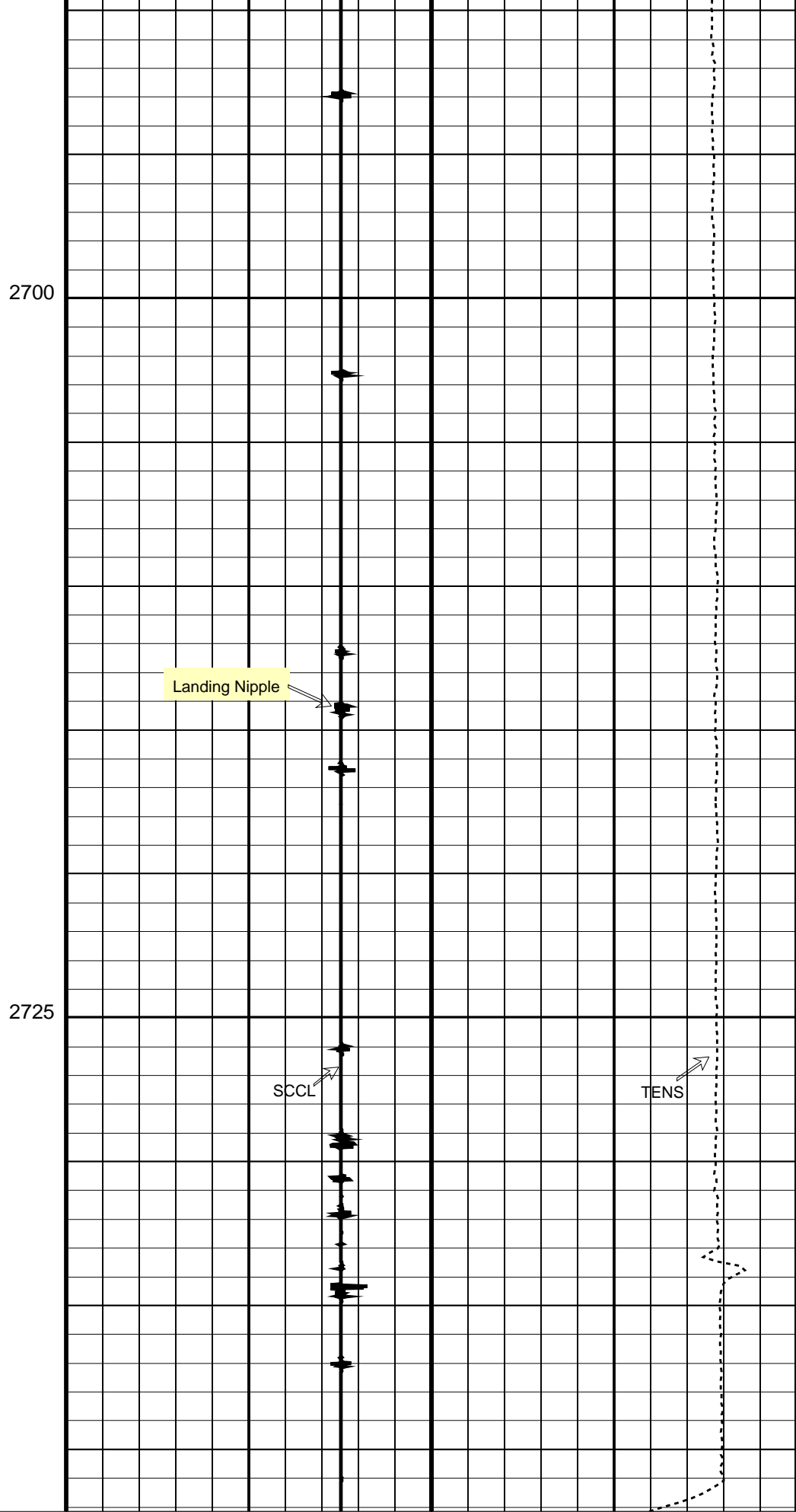
Time Mark Every 60 S







Casing Collar Locator (CCL)  
-19 (----) 1  
Raw Casing Collar Locator (RCCL)



Shifted Casing Collar Locator (SCCL)  
-10 (----) 10 0  
Tension (TENS)  
(LBF) 2000



PIP SUMMARY

Casing Collars

Time Mark Every 60 S

Parameters		
DLIS Name	Description	Value
CCL-L: Casing Collar Locator		
CCLD	CCL reset delay	12 IN
CCLT	CCL Detection Level	0.3 V

Format: CCLLog

Vertical Scale: 1:200

Graphics File Created: 02-Mar-2007 06:52

OP System Version: 14C0-302

MCM

SHM\_GUN

PTC-3268-NUCL\_b

CCL-L

14C0-302

Output DLIS Files		
DEFAULT	PERFO_017LUP	FN:16 PRODUCER 02-Mar-2007 06:52

Company:

Esso Australia

Schlumberger

Well:

BMA 21a

Field:

Bream

Rig:

ISS Rig 22

Country:

Australia

2 1/2" PowerCutter

Tubing Cut Record

2 March 2007