

Company: Esso Australia Pty Ltd.

Well: BMA A-5a  
Field: Bream  
Rig: ISS Rig 22 / Prod 2      Country: Australia

Rig:ISS Rig 22 / Prod 2

Field: Bream

Location: Bass Strait

Well: BMA A-5a

Company: Esso Australia Pty Ltd.

2 1/8" Enerjet Powerjet

Perforation Record

HPI Plug

LOCATION

Bass Strait

Gippsland

Basin

Permanent Datum:

Log Measured From:

Drilling Measured From:

Mean Sea Level

Drill Floor

Drill Floor

Elev.: 0 m

33.2 m

above Perm. Datum

State: Victoria

Max. Well Deviation 58 deg

Longitude 147° 46' 15.7"E

Latitude 38° 30' 2.5"S

Logging Date				6-Feb-2007			
Run Number				1			
Depth Driller				2810 m			
Schlumberger Depth				2706 m Tagged			
Bottom Log Interval				2682 m			
Top Log Interval				2679 m			
Casing Fluid Type				Production Fluids.			
Salinity							
Density							
Fluid Level							
BIT/CASING/TUBING STRING							
Bit Size				8.500 in			
From				895.5 m			
To				2809 m			
Casing/Tubing Size				7.000 in			
Weight				29 lbm/ft			
Grade				L-80			
From				11.7 m			
To				2809 m			
Maximum Recorded Temperatures				99 degC			
Logger On Bottom				6-Feb-2007		14:30	
Unit Number				3827	AUSL		
Recorded By				O.Darby,B.Donahoe,A.Sword			
Witnessed By				Mr J.Dean/Mr D.Broomfield			

PVT DATA	Oil Density	Run 1	Run 2	Run 3
	Water Salinity			
	Gas Gravity			
	Bo			
	Bw			
Solution GOR	1/Bg			
	Bubble Point Pressure			
	Bubble Point Temperature			
Maximum Deviation		58 deg		
CEMENTING DATA				
Primary/Squeeze		Primary		
Casing String No				
Lead Cement Type				
Volume				
Density				
Water Loss				
Additives				
Tail Cement Type				
Volume				
Density				
Water Loss				
Additives				
Expected Cement Top				
Logging Date				
Run Number				
Depth Driller				
Schlumberger Depth				
Bottom Log Interval				
Top Log Interval				
Casing Fluid Type				
Salinity				
Density				
Fluid Level				
BIT/CASING/TUBING STRING				
Bit Size				
From				
To				
Casing/Tubing Size				
Weight				
Grade				
From				
To				
Maximum Recorded Temperatures				
Logger On Bottom				
Unit Number				
Recorded By				
Witnessed By				

## Date Created: 4-FEB-2007 0:04:02

## Logging Cable

Type:	2-32ZT
Serial Number:	24031
Length:	5650.08 M
Conveyance Method:	Wireline
Rig Type:	Offshore Fixed

Log Sequence:	Subsequent Log In the Well
Reference Log Name:	Solar Composite
Reference Log Run Number:	
Reference Log Date:	Not provided

1. Log Correlated to Esso Composite Log
2. Primary depth control was the IDW
3. Secondary depth control was the Z-Chart
- 4.
- 5.
- 6.

THE USE OF AND RELIANCE UPON THIS RECORDED-DATA BY THE HEREIN NAMED COMPANY (AND ANY OF ITS AFFILIATES, PARTNERS, REPRESENTATIVES, AGENTS, CONSULTANTS AND EMPLOYEES) IS SUBJECT TO THE TERMS AND CONDITIONS AGREED UPON BETWEEN SCHLUMBERGER AND THE COMPANY, INCLUDING: (a) RESTRICTIONS ON USE OF THE RECORDED-DATA; (b) DISCLAIMERS AND WAIVERS OF WARRANTIES AND REPRESENTATIONS REGARDING COMPANY'S USE OF AND RELIANCE UPON THE RECORDED-DATA; AND (c) CUSTOMER'S FULL AND SOLE RESPONSIBILITY FOR ANY INFERENCE DRAWN OR DECISION MADE IN CONNECTION WITH THE USE OF THIS RECORDED-DATA.

OTHER SERVICES2  
OS1:  
OS2:  
OS3:  
OS4:  
OS5:

REMARKS: RUN NUMBER 2

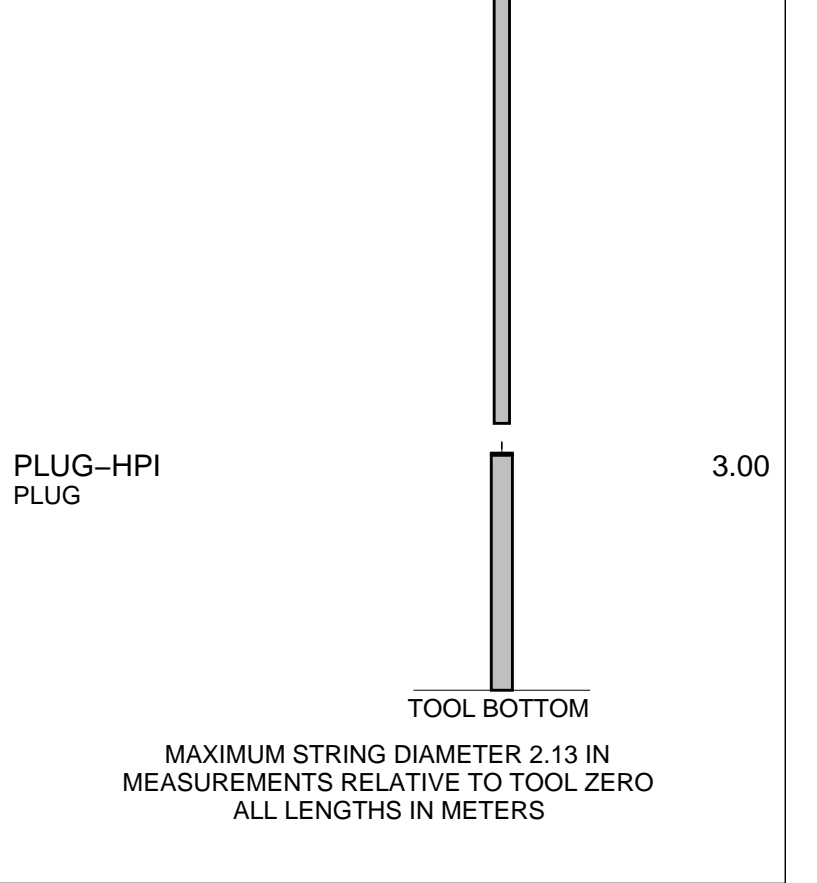
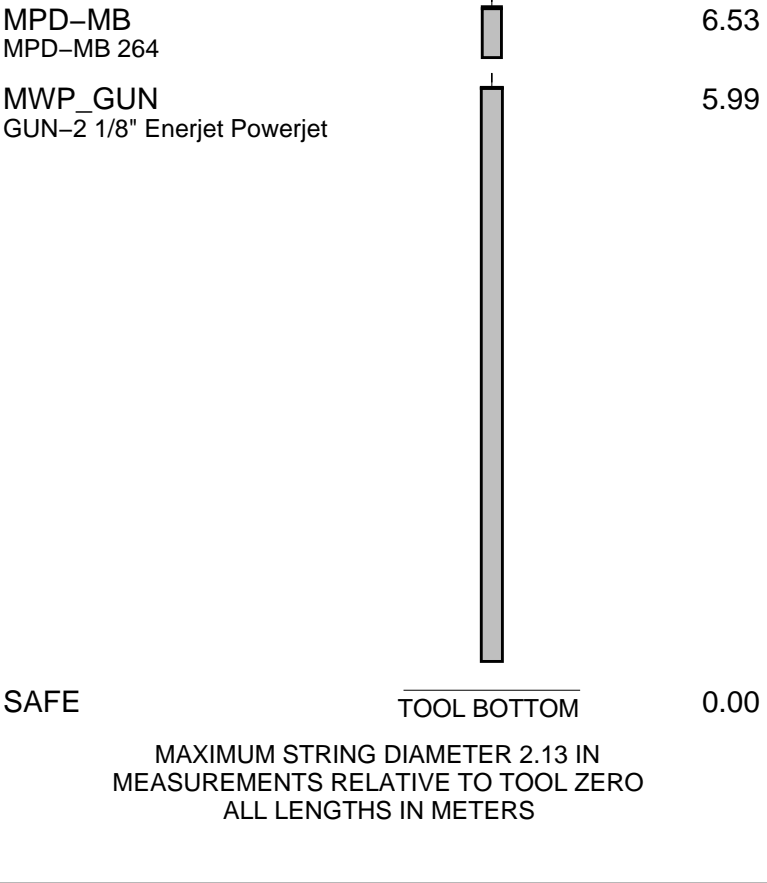
## Objective

Rig up and RIH with 2-1/8" 45 +/- Deg phased 6 SPF enerjet Powerjet, and MWPT, correlate on depth to Esso solar composite log. Locate the guns at the perforation interval. Attempt to create a 300psi underbalance, perforate then measure static bottom hole pressure and temperature. Flow the well for 15 mins

RUN 1 SERVICE ORDER #: PROGRAM VERSION: 14C0-302 FLUID LEVEL:			RUN 2 SERVICE ORDER #: PROGRAM VERSION: FLUID LEVEL:		
LOGGED INTERVAL	START	STOP	LOGGED INTERVAL	START	STOP

	RUN 1	RUN 2
1	1	1
2	1	1
3	1	1
4	1	1
5	1	1
6	1	1
7	1	1
8	1	1
9	1	1
10	1	1
11	1	1
12	1	1
13	1	1
14	1	1
15	1	1
16	1	1
17	1	1
18	1	1
19	1	1
20	1	1
21	1	1
22	1	1
23	1	1
24	1	1
25	1	1
26	1	1
27	1	1
28	1	1
29	1	1
30	1	1
31	1	1
32	1	1
33	1	1
34	1	1
35	1	1
36	1	1
37	1	1
38	1	1
39	1	1
40	1	1
41	1	1
42	1	1
43	1	1
44	1	1
45	1	1
46	1	1
47	1	1
48	1	1
49	1	1
50	1	1
51	1	1
52	1	1
53	1	1
54	1	1
55	1	1
56	1	1
57	1	1
58	1	1
59	1	1
60	1	1
61	1	1
62	1	1
63	1	1
64	1	1
65	1	1
66	1	1
67	1	1
68	1	1
69	1	1
70	1	1
71	1	1
72	1	1
73	1	1
74	1	1
75	1	1
76	1	1
77	1	1
78	1	1
79	1	1
80	1	1
81	1	1
82	1	1
83	1	1
84	1	1
85	1	1
86	1	1
87	1	1
88	1	1
89	1	1
90	1	1
91	1	1
92	1	1
93	1	1
94	1	1
95	1	1
96	1	1
97	1	1
98	1	1
99	1	1
100	1	1

DOWNHOLE EQUIPMENT	DOWNHOLE EQUIPMENT
--------------------	--------------------



Client: Esso Australia

Well: BMA A5a

Field: Bream

State: Victoria

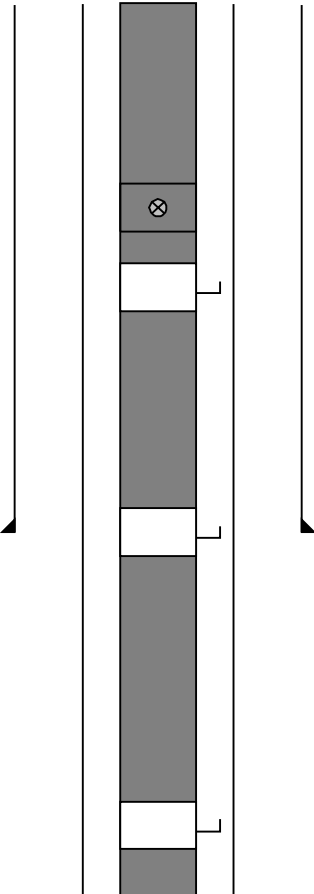
Country: Australia

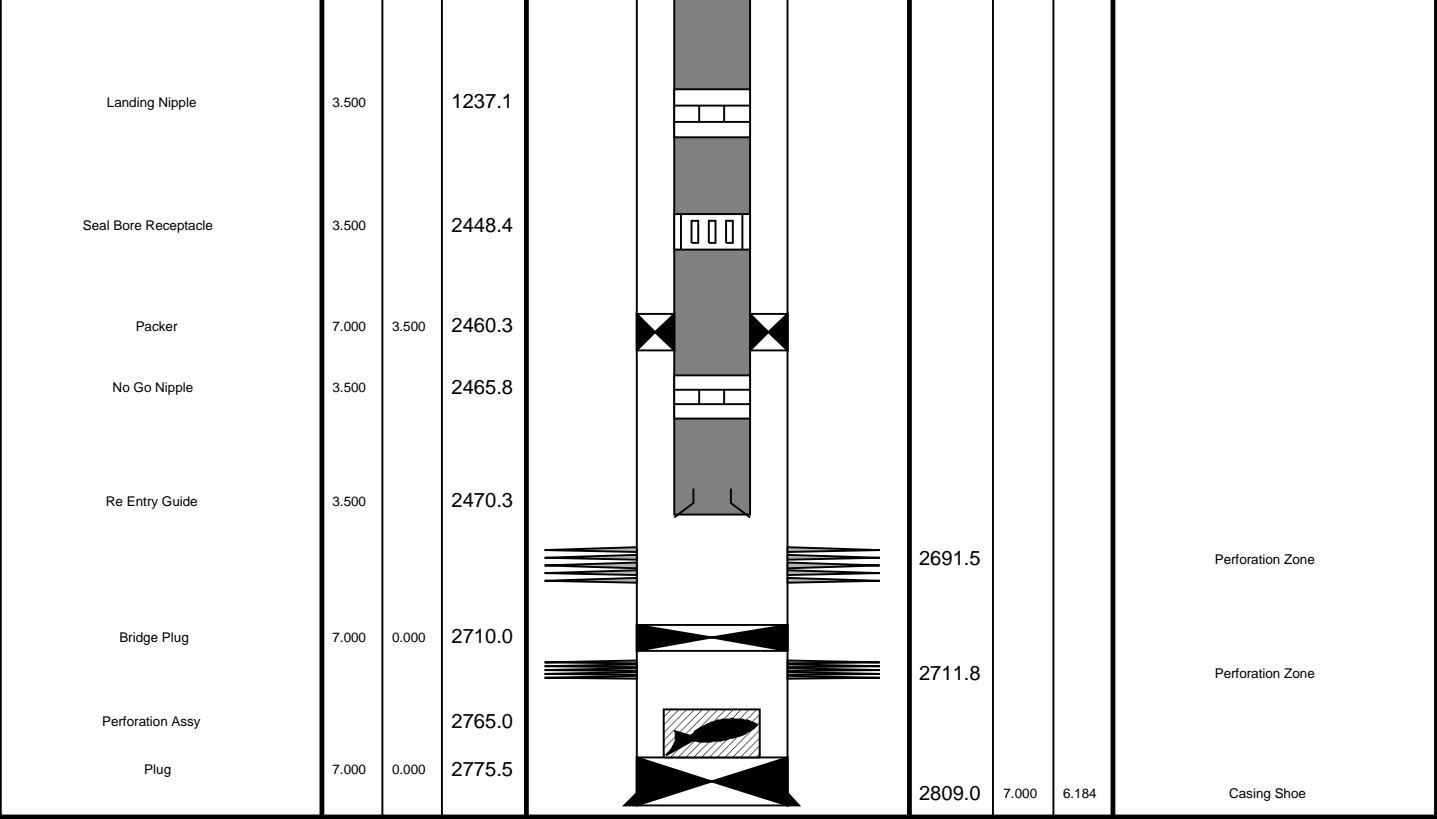
Rig Name: ISS Rig22

Reference Datum: Mean Sea Level

Elevation: 33.5 m

Drawing Date: 2/7/2007

Production String	(in)		(m)	Well Schematic			(m)		(in)		Casing String
	OD	ID	MD				MD	OD	ID		
Tubing	3.500	2.992	11.0		13.2	13.375	12.615	Casing String			
SSSV	3.500		451.5								
Side Pocket Mandrel	3.500		518.0								
Side Pocket Mandrel	3.500		912.8								
Side Pocket Mandrel	3.500		1220.9								



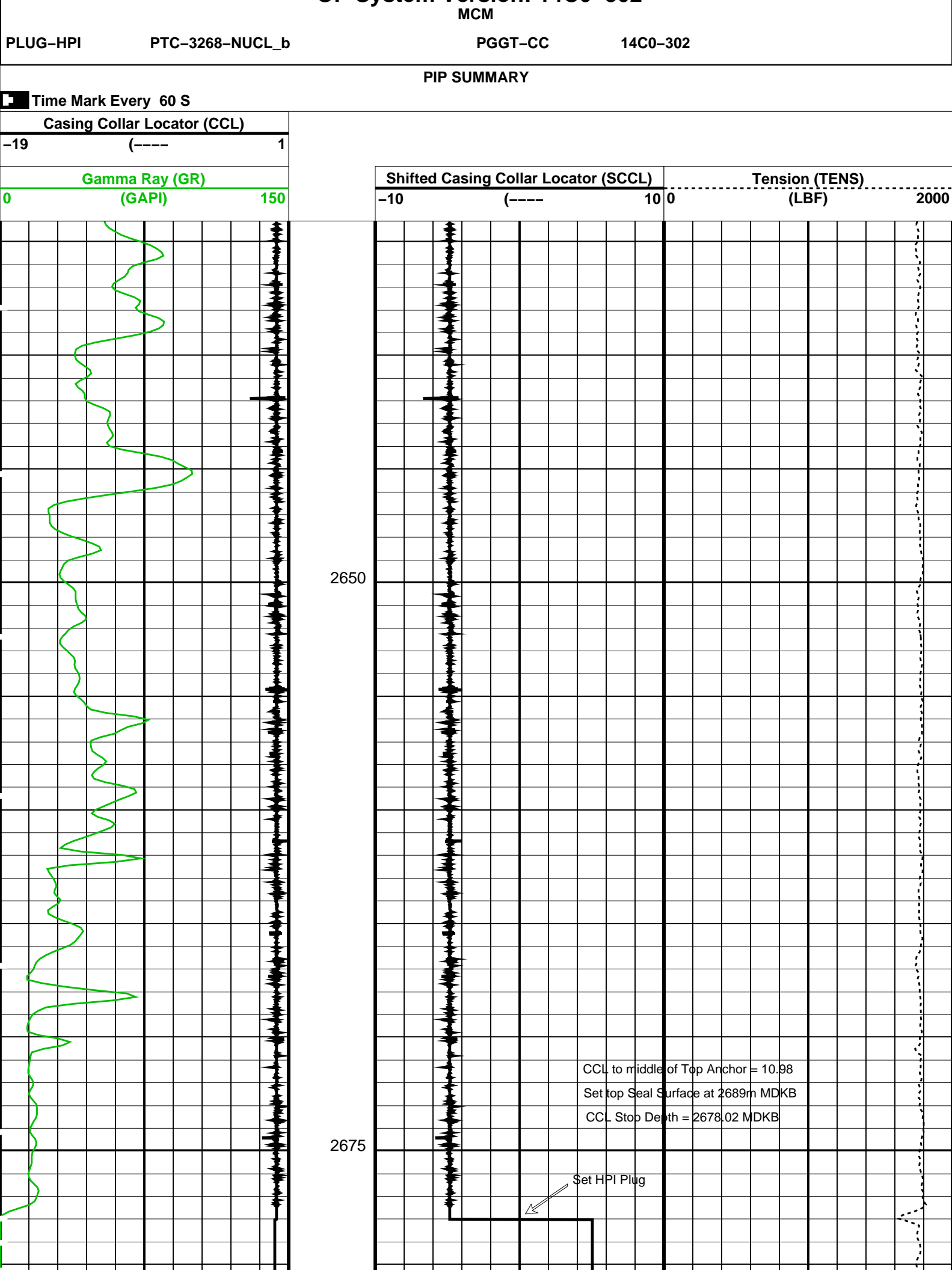
7" HPI Plug  
Setting Pass

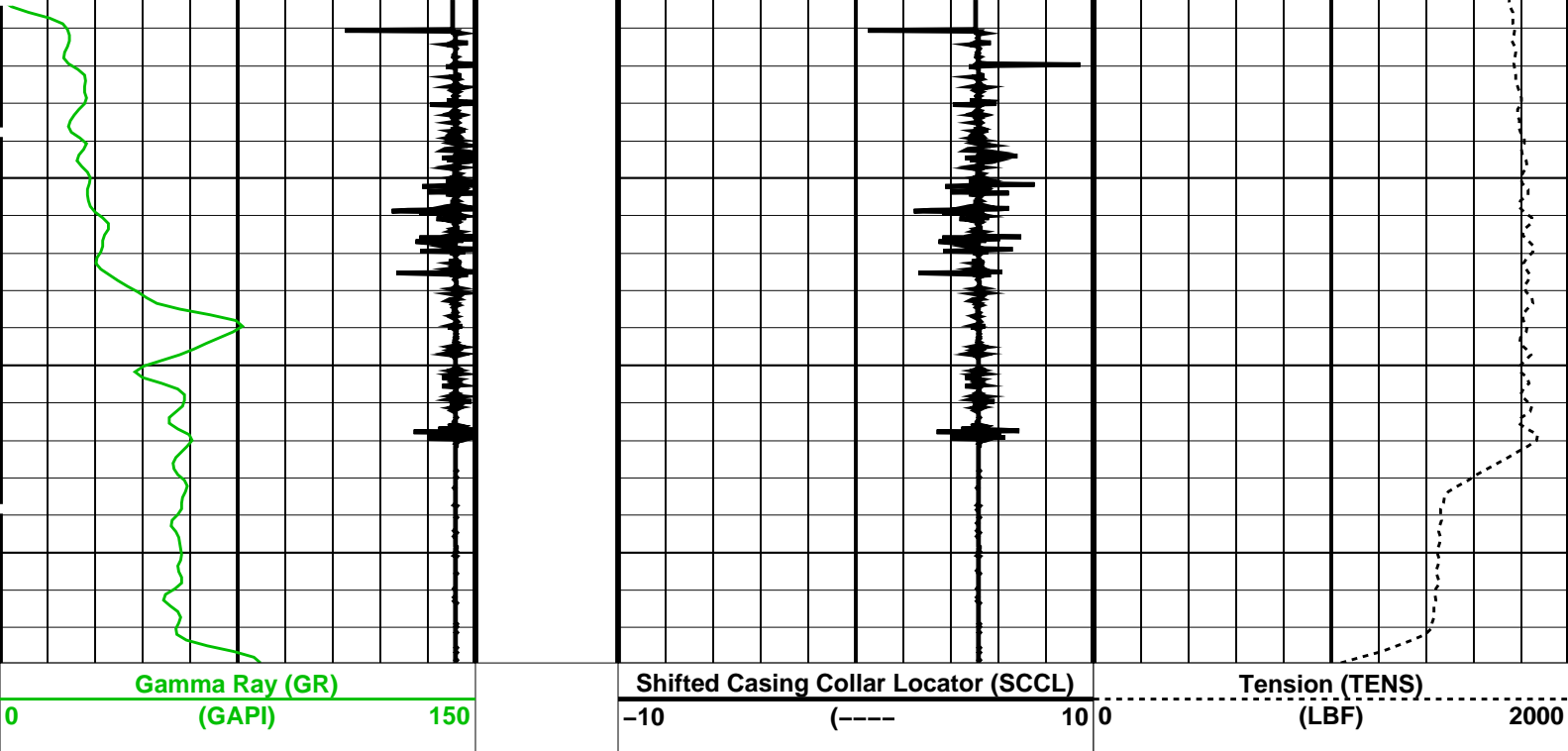
MAXIS Field Log

PERFO2 Operational Summary Listing

Device	Status	Req Depth ( M)	Obs Depth ( M)	Time Used
PLUG1	Used	2689.0	2689.0	Wed Feb 07 02:06:46 2007

Company:					Well:
Output DLIS Files					
DEFAULT	PLUG_067LUP	FN:66	PRODUCER	07-Feb-2007 02:00	





#### PIP SUMMARY

Time Mark Every 60 S

Format: PERFO Vertical Scale: 1:200

Graphics File Created: 07-Feb-2007 02:00

**OP System Version: 14C0-302**

MCM

PLUG-HPI

PTC-3268-NUCL\_b

PGGT-CC

14C0-302

#### Output DLIS Files

DEFAULT

PLUG\_067LUP

FN:66

PRODUCER

07-Feb-2007 02:00

**Schlumberger**

**7" HPI Plug  
Dummy Run**

MAXIS Field Log

Company:

Well:

#### Output DLIS Files

DEFAULT

PLUG\_066LUP

FN:65

PRODUCER

07-Feb-2007 01:37

**OP System Version: 14C0-302**

MCM

PLUG-HPI

PTC-3268-NUCL\_b

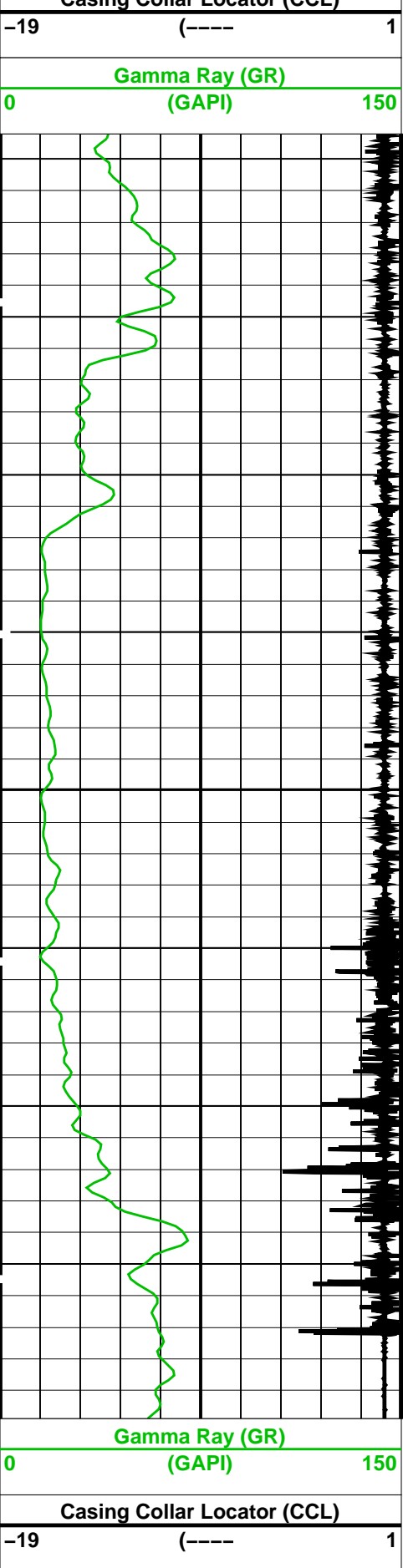
PGGT-CC

14C0-302

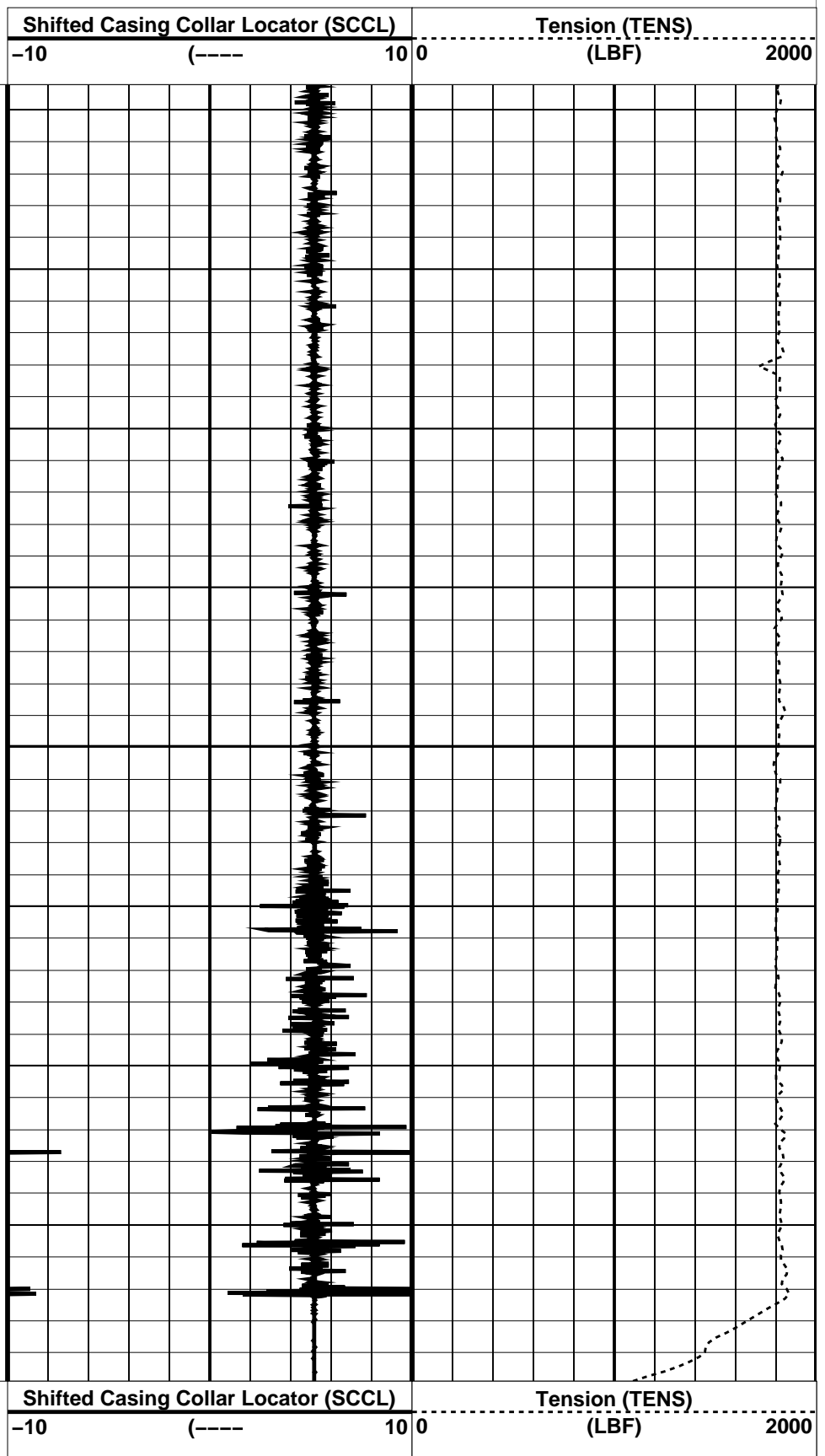
#### PIP SUMMARY

Time Mark Every 60 S

Casing Collar Locator (CCL)



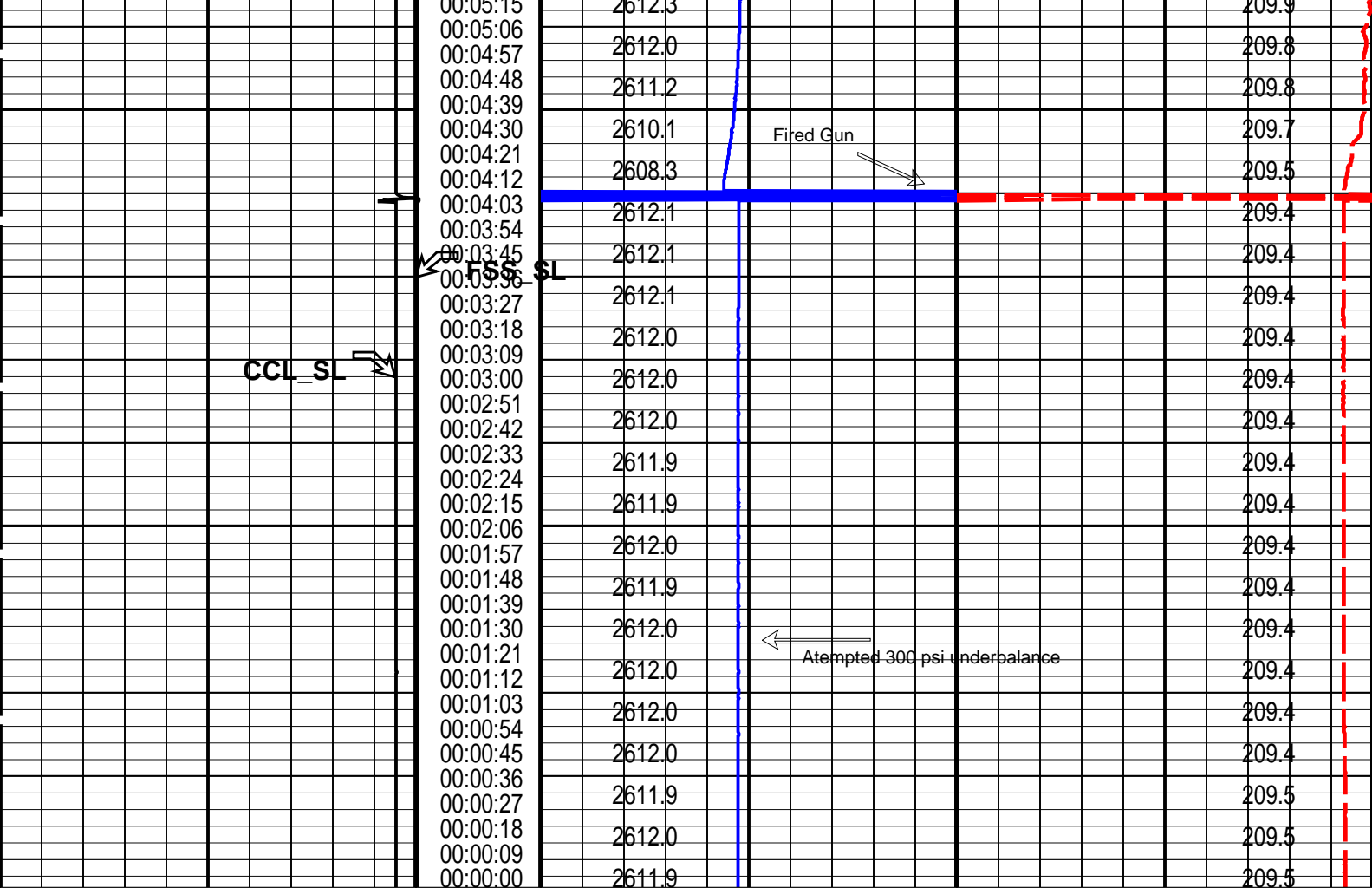
2675







	00:16:12	2614.3		210.0
	00:16:03	2614.2		210.0
	00:15:54			
	00:15:45	2614.2		210.0
	00:15:36			
	00:15:27	2614.1		210.0
	00:15:18			
	00:15:09	2614.2		210.0
	00:15:00			
	00:14:51	2614.1		210.0
	00:14:42			
	00:14:33	2614.4		210.0
	00:14:24			
	00:14:15	2614.2		210.1
	00:14:06			
	00:13:57	2614.1		210.0
	00:13:48			
	00:13:39	2614.2		210.0
	00:13:30			
	00:13:21	2614.2		210.1
	00:13:12			
	00:13:03	2614.2		210.0
	00:12:54			
	00:12:45	2614.2		210.1
	00:12:36			
	00:12:27	2614.3		210.1
	00:12:18			
	00:12:09	2614.2		210.1
	00:12:00			
	00:11:51	2614.2		210.1
	00:11:42			
	00:11:33	2614.1		210.1
	00:11:24			
	00:11:15	2614.1		210.1
	00:11:06			
	00:10:57	2614.1		210.1
	00:10:48	2614.2		210.1
	00:10:39			
	00:10:30	2614.1		210.2
	00:10:21			
	00:10:12	2614.2		210.2
	00:10:03			
	00:09:54	2614.2		210.1
	00:09:45			
	00:09:36	2614.1		210.1
	00:09:27			
	00:09:18	2614.2		210.1
	00:09:09			
	00:09:00	2614.1		210.1
	00:08:51			
	00:08:42	2614.1		210.2
	00:08:33			
	00:08:24	2614.1		210.1
	00:08:15			
	00:08:06	2614.2		210.1
	00:07:57			
	00:07:48	2614.2		210.2
	00:07:39			
	00:07:30	2614.1		210.1
	00:07:21			
	00:07:12	2614.1		210.1
	00:07:03			
	00:06:54	2614.1		210.2
	00:06:45			
	00:06:36	2614.1		210.1
	00:06:27			
	00:06:18	2614.1		210.2
	00:06:09			
	00:06:00	2613.8		210.1
	00:05:51			
	00:05:42	2613.5		210.1
	00:05:33			
	00:05:24	2613.3		210.0
	00:05:15			
	00:05:06	2612.8		210.1
	00:04:57			
	00:04:48	2612.2		210.0



Casing Collar Locator (CCL_SL)		Elapsed Time (ETIM) (S)	Strain Gauge Pressure (SGP_SL)		Temperature (TEMP_MWPT_SL)			
-19	(----		1	2574.6958	(PSIA)	2684.6958	202	(DEGF)
		Firing Sequence State (FSS_SL)	Pressure (SGP_SL) (PSIG)			Temperature (TEMP_MWPT_SL) (DEGF)		
		(----						0

PIP SUMMARY

Time Mark Every 60 S

Parameters		
DLIS Name	Description	Value
MWPT-CA: MEASUREMENT WHILE PERFORATING TOOL		
DEVI_FL_CORR	Deviation Angle for Flow Line Correction	0 DEG
FLD	Flow Line Density	1 G/C3
MWPT_NULL_SOURCE	MWPT NULL Temperature Source	TEMS
MWPT_NULL_TEMP	MWPT NULL Temperature	0.0 DEGC

Format: MWP\_SL Vertical Scale: 1" per 60S

Graphics File Created: 06-Feb-2007 15:41

OP System Version: 14C0-302

MCM

MWP_GUN	PTC-3268-NUCL_b	MWPT-CA	PTC-3268-NUCL_b
MWGT-BA	PTC-3268-NUCL_b		

Output DLIS Files

DEFAULT	PERFO_045LTP	FN:44	PRODUCER	06-Feb-2007 15:41
---------	--------------	-------	----------	-------------------

PERFO2 Operational Summary Listing

Device Status Req Depth ( M) Obs Depth ( M) Time Used

GUN1 Used 2679.0 2679.0 Tue Feb 06 15:45:03 2007

Company: Esso Australia Pty Ltd.

Well: BMA A-5a

**Output DLIS Files**

DEFAULT PERFO\_046LUP FN:45 PRODUCER 06-Feb-2007 16:09 2674.3 M 2574.6 M

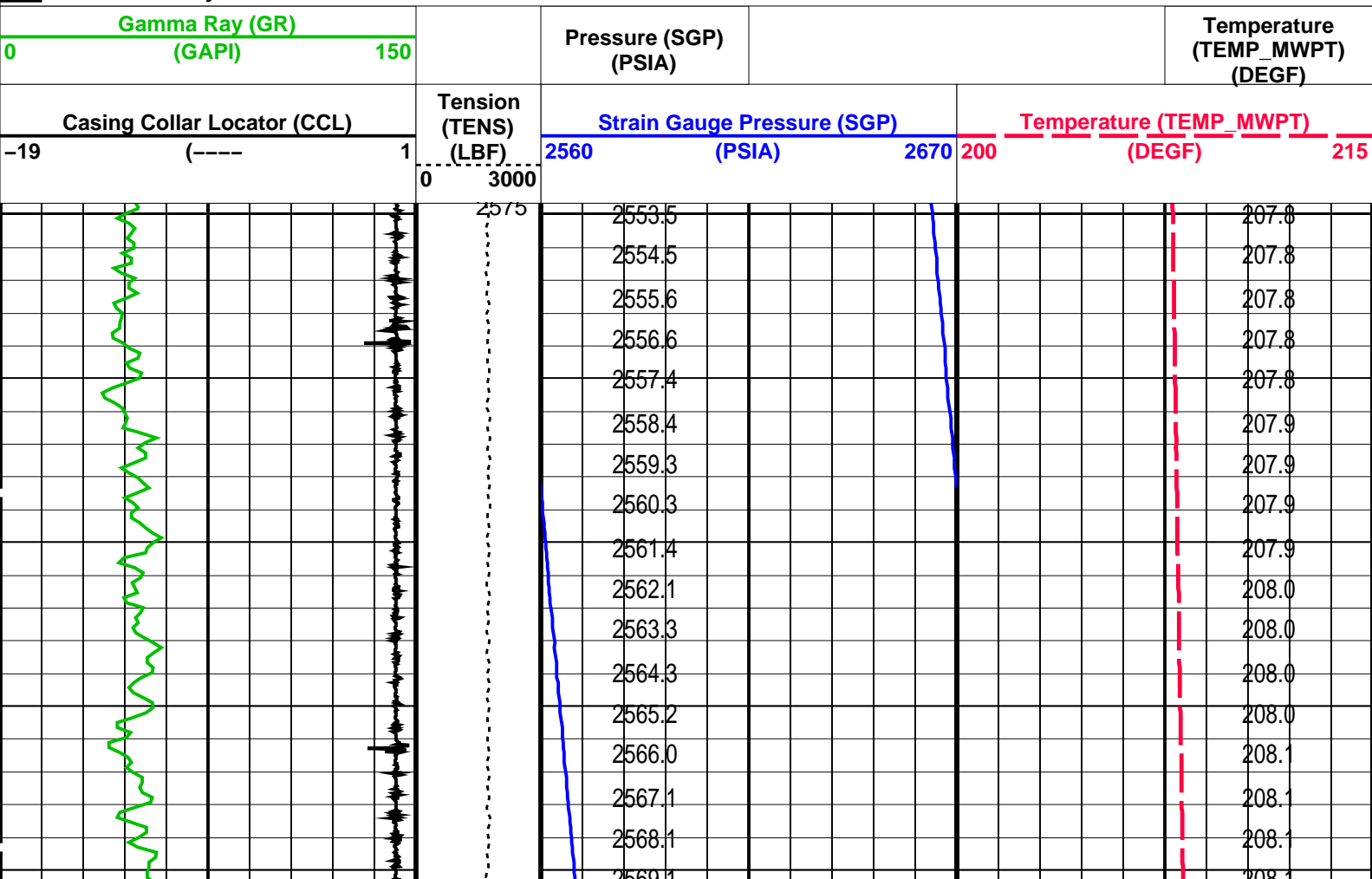
**OP System Version: 14C0-302**

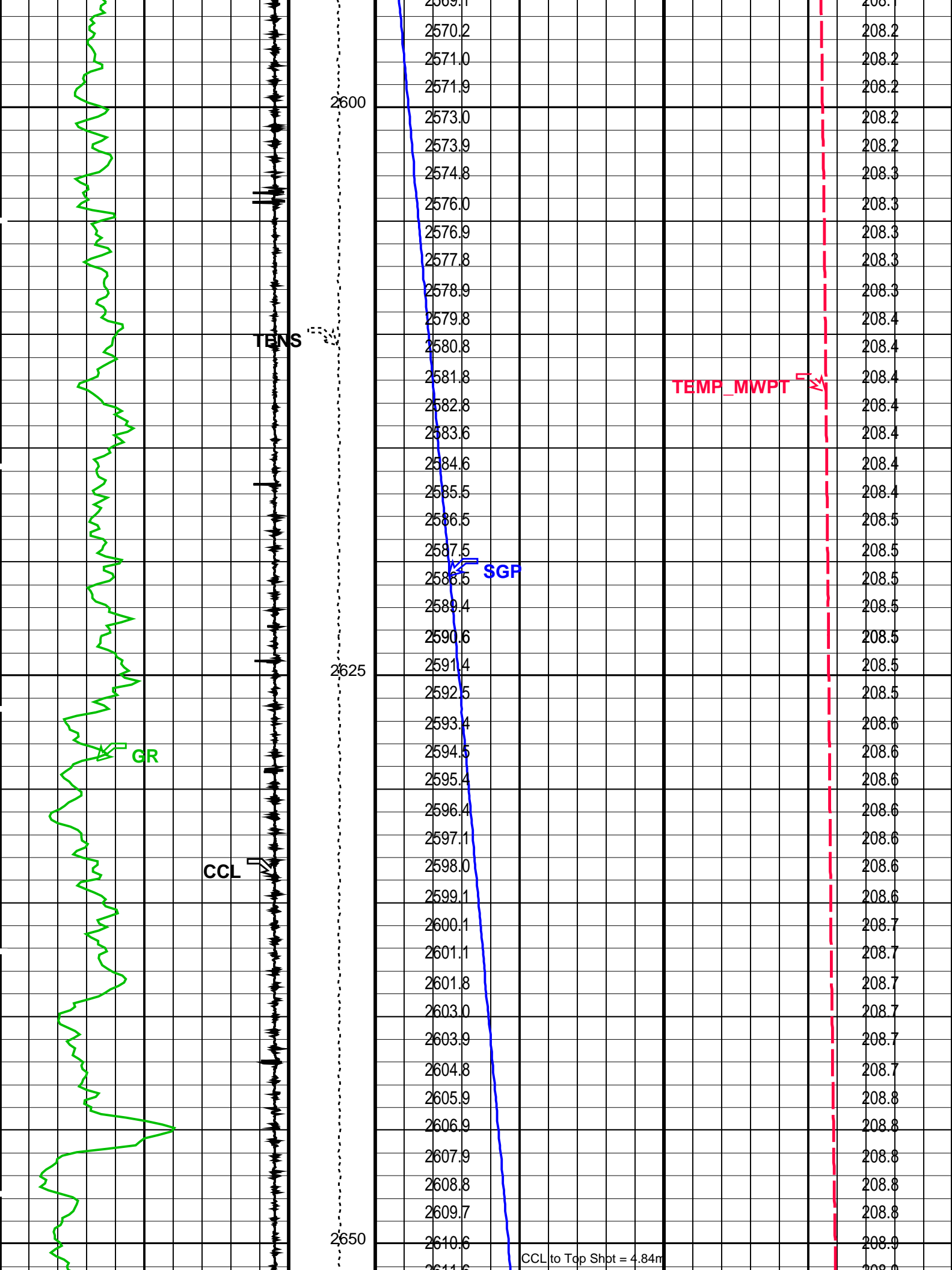
MCM

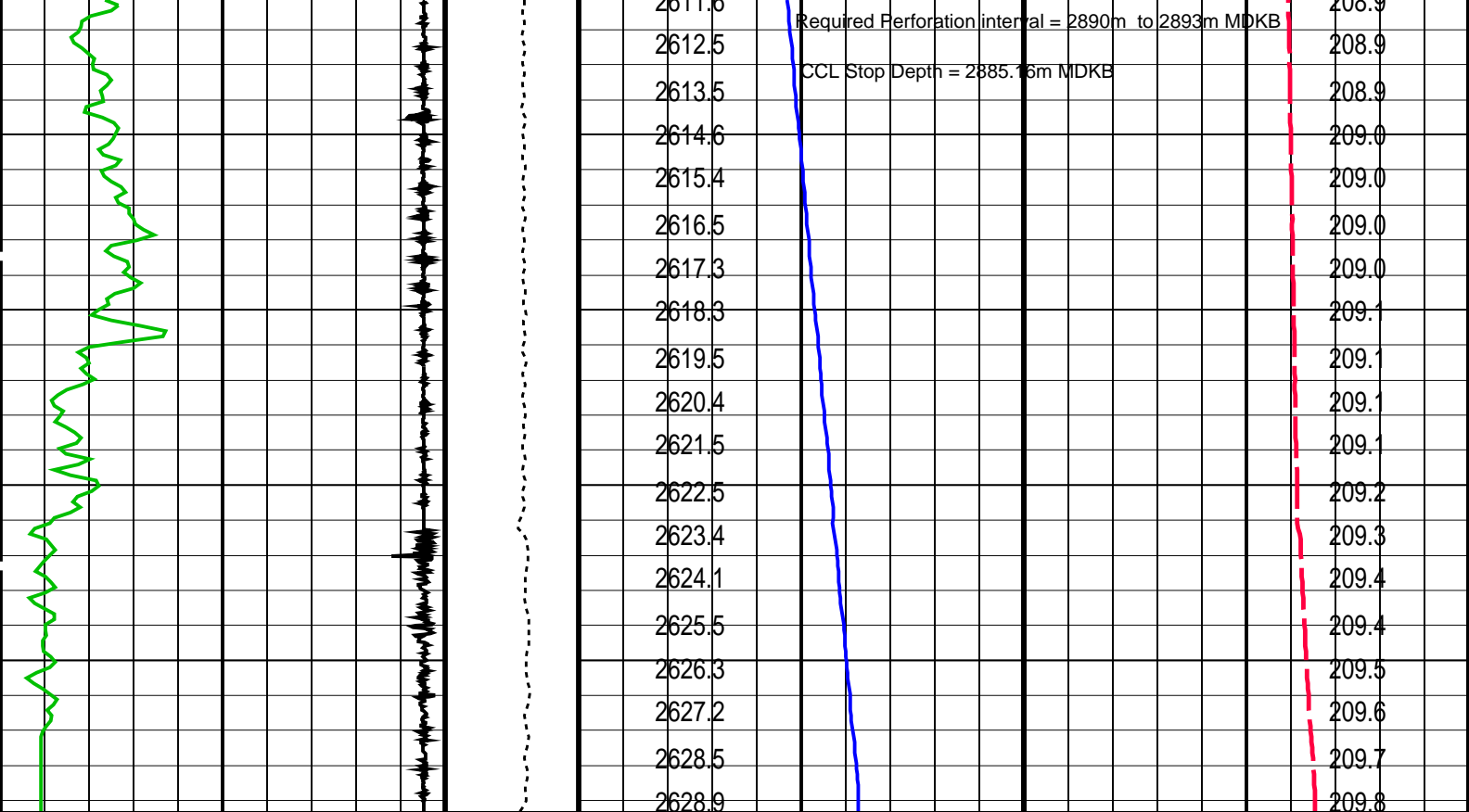
MWP\_GUN PTC-3268-NUCL\_b MWPT-CA PTC-3268-NUCL\_b  
MWGT-BA PTC-3268-NUCL\_b

**PIP SUMMARY**

Time Mark Every 60 S







Casing Collar Locator (CCL)		Tension (TENS) (LBF)	Strain Gauge Pressure (SGP)		Temperature (TEMP_MWPT)	
-19	(----) 1		2560 (PSIA)	2670	200 (DEGF)	215
Gamma Ray (GR) (GAPI)			Pressure (SGP) (PSIA)		Temperature (TEMP_MWPT) (DEGF)	
0	150					

PIP SUMMARY

Time Mark Every 60 S

Parameters		
DLIS Name	Description	Value
MWPT-CA: MEASUREMENT WHILE PERFORATING TOOL		
DEVI_FL_CORR	Deviation Angle for Flow Line Correction	0 DEG
FLD	Flow Line Density	1 G/C3
MWPT_NULL_SOURCE	MWPT NULL Temperature Source	TEMS
MWPT_NULL_TEMP	MWPT NULL Temperature	0.0 DEGC

Format: MWP Vertical Scale: 1:200 Graphics File Created: 06-Feb-2007 16:09

OP System Version: 14C0-302			
MCM			
MWP_GUN	PTC-3268-NUCL_b	MWPT-CA	PTC-3268-NUCL_b
MWGT-BA	PTC-3268-NUCL_b		

Output DLIS Files			
DEFAULT	PERFO_046LUP	FN:45 PRODUCER	06-Feb-2007 16:09



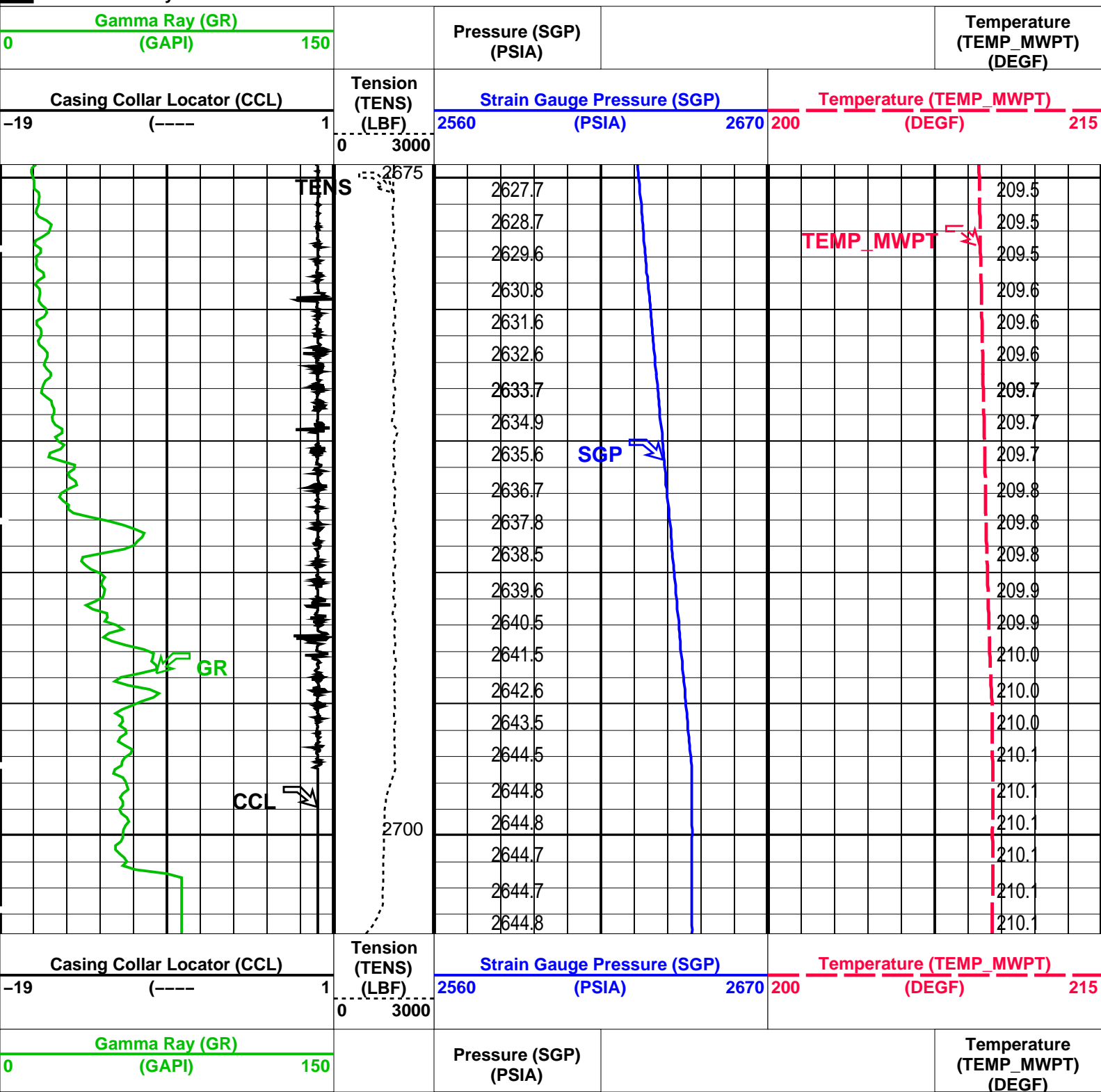
2 1/8" Enerjet Powerjet  
Before Shoot

DEFAULT	PERFO_044LUP	FN:43	PRODUCER	06-Feb-2007 15:36	2703.7 M	2674.3 M
---------	--------------	-------	----------	-------------------	----------	----------

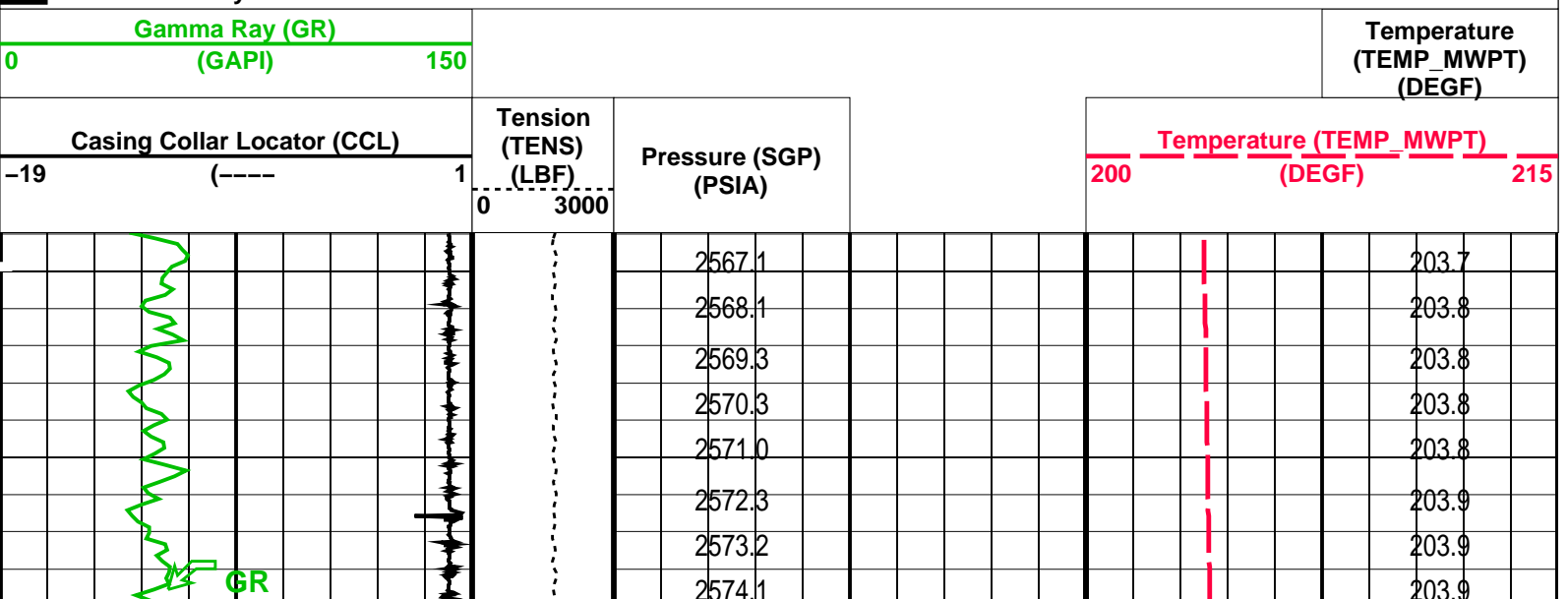
**MCM**

PTC-3268-NUCL b

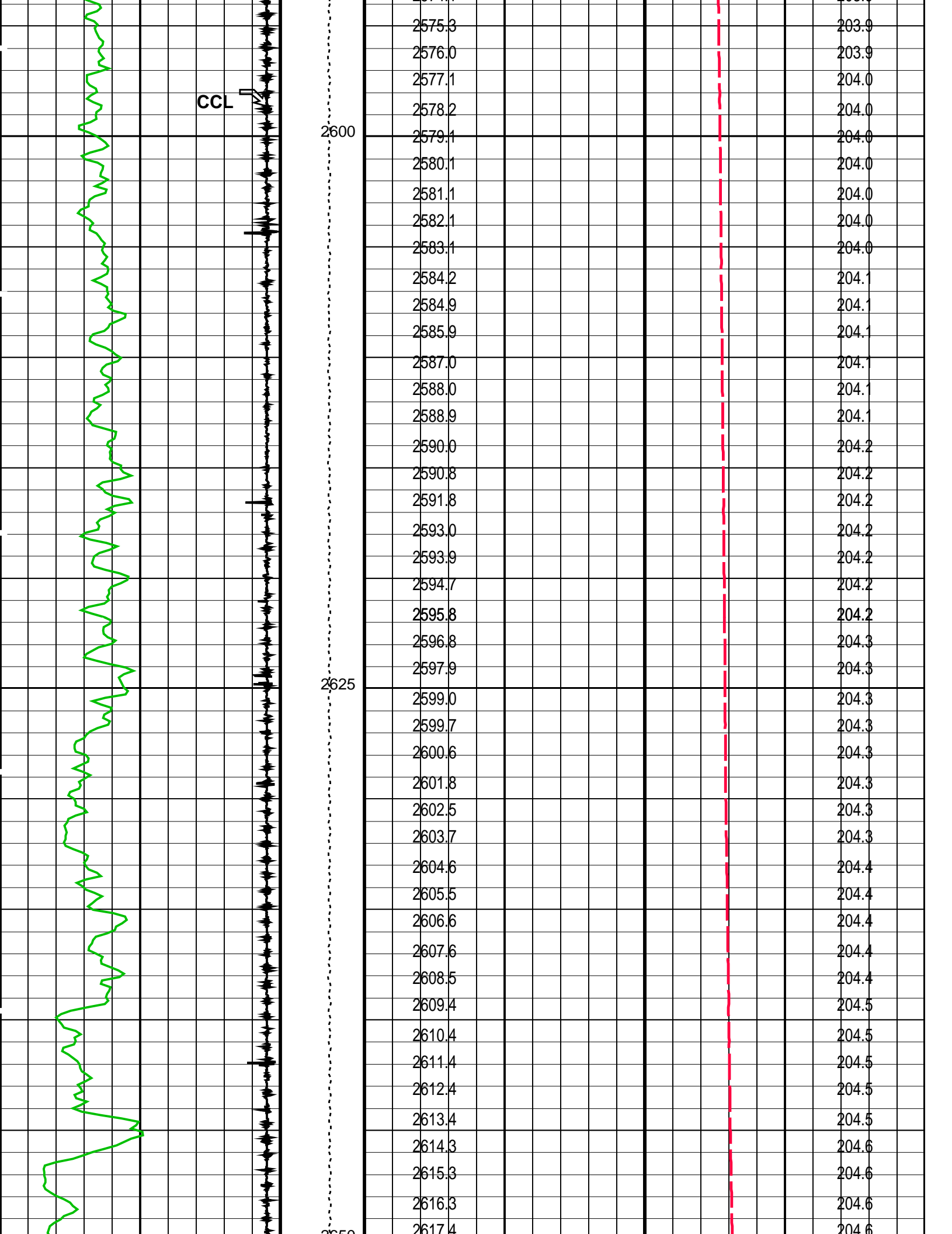
**Time Mark Every 60 S**

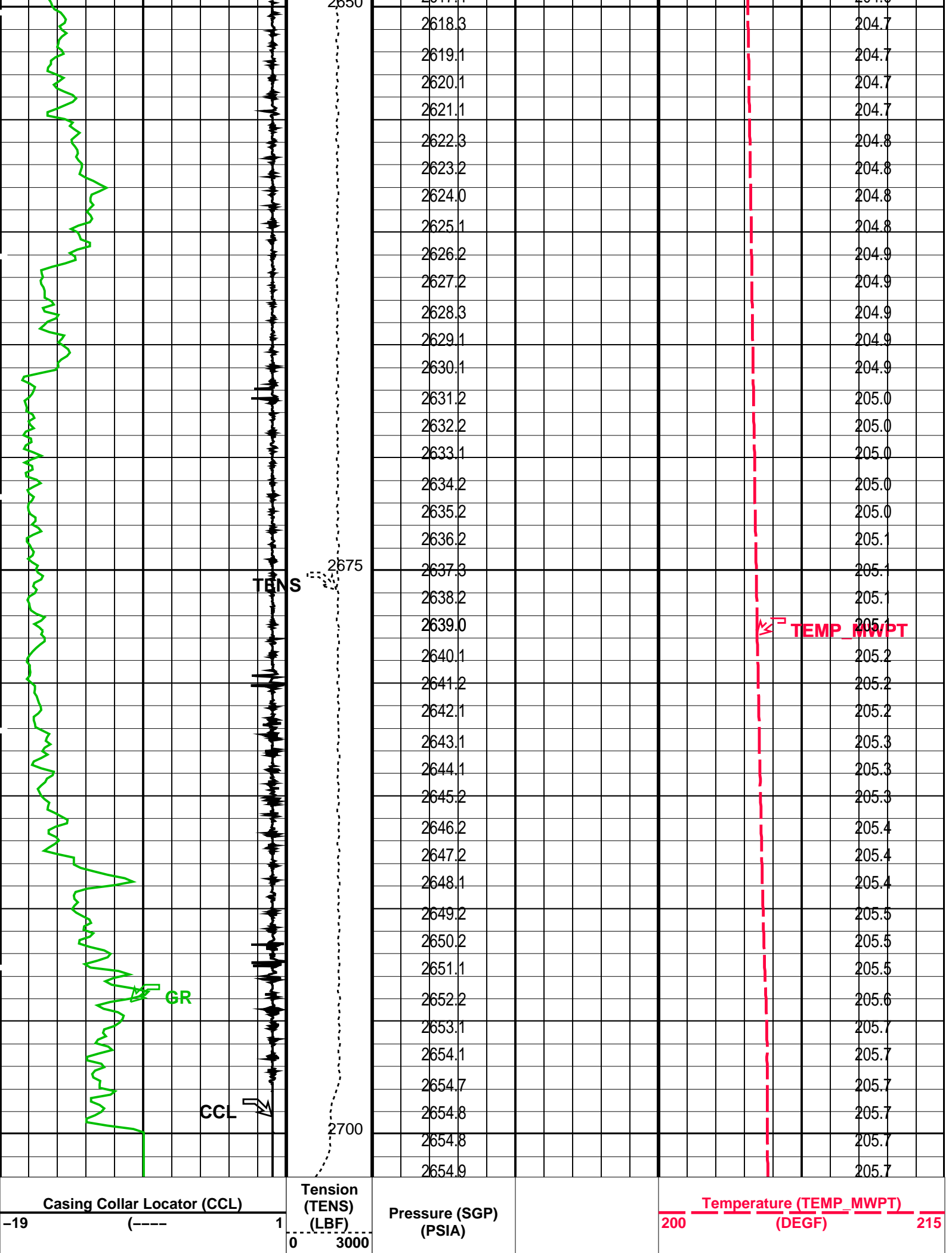


## PIP SUMMARY









Gamma Ray (GR)				Temperature (TEMP_MWPT) (DEGF)	
0	(GAPI)	150			
PIP SUMMARY					
Time Mark Every 60 S					
Parameters					
DLIS Name		Description		Value	
MWPT-CA: MEASUREMENT WHILE PERFORATING TOOL					
DEVI_FL_CORR		Deviation Angle for Flow Line Correction		0	DEG
FLD		Flow Line Density		1	G/C3
MWPT_NULL_SOURCE		MWPT NULL Temperature Source		TEMS	
MWPT_NULL_TEMP		MWPT NULL Temperature		0.0	DEGC
Format: MWP		Vertical Scale: 1:200		Graphics File Created: 06-Feb-2007 15:17	
OP System Version: 14C0-302					
MCM					
MWP_GUN		PTC-3268-NUCL_b		MWPT-CA PTC-3268-NUCL_b	
MWGT-BA		PTC-3268-NUCL_b			
Output DLIS Files					
DEFAULT		PERFO_042LUP		FN:41 PRODUCER 06-Feb-2007 15:17	
Company: Esso Australia Pty Ltd.					
Schlumberger					
Well: BMA A-5a					
Field: Bream					
Rig: ISS Rig 22 / Prod 2					
Country: Australia					
2 1/8" Enerjet Powerjet					
Perforation Record					
HPI Plug					