

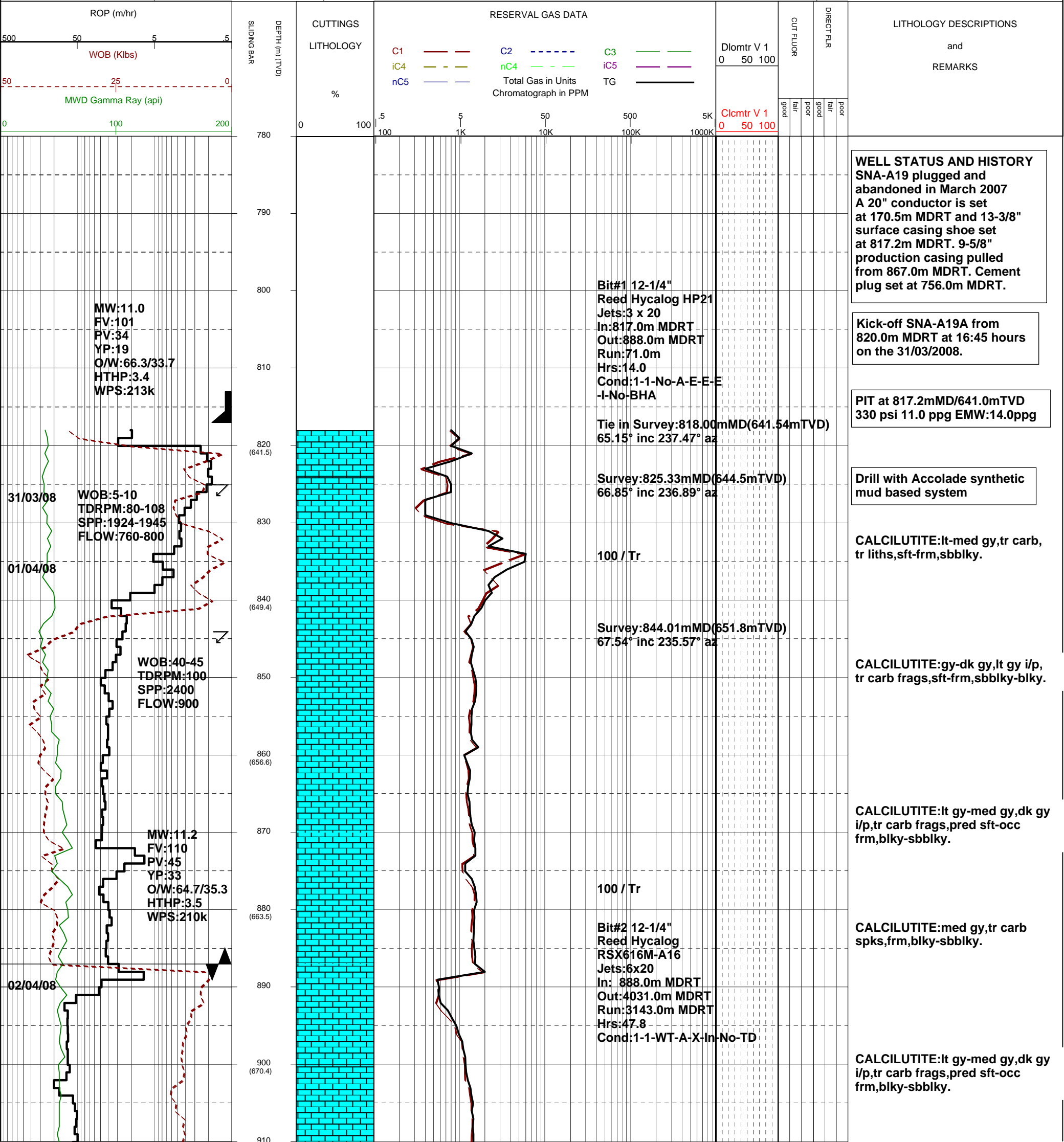


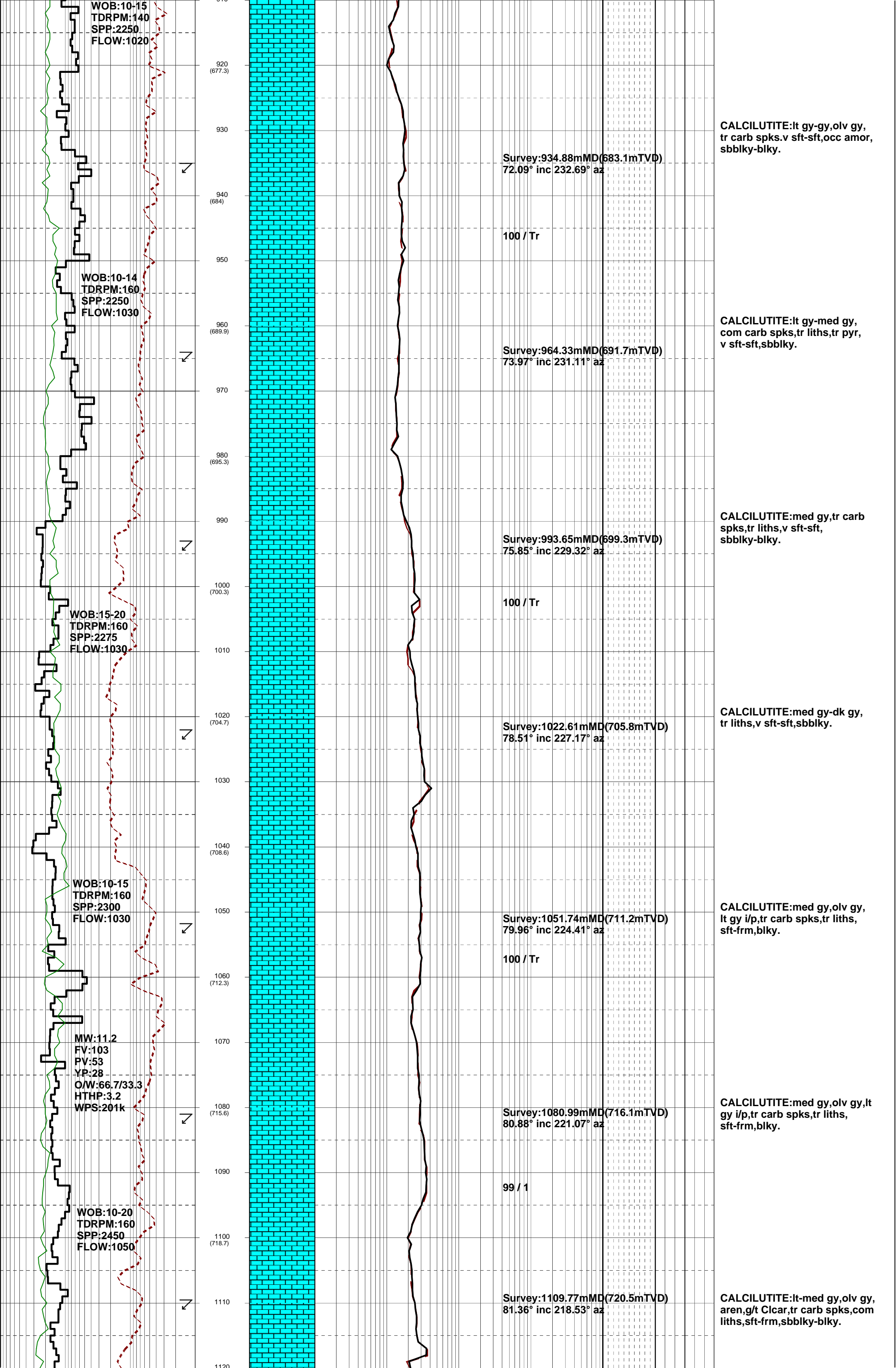
MASTERLOG
Snapper A19A

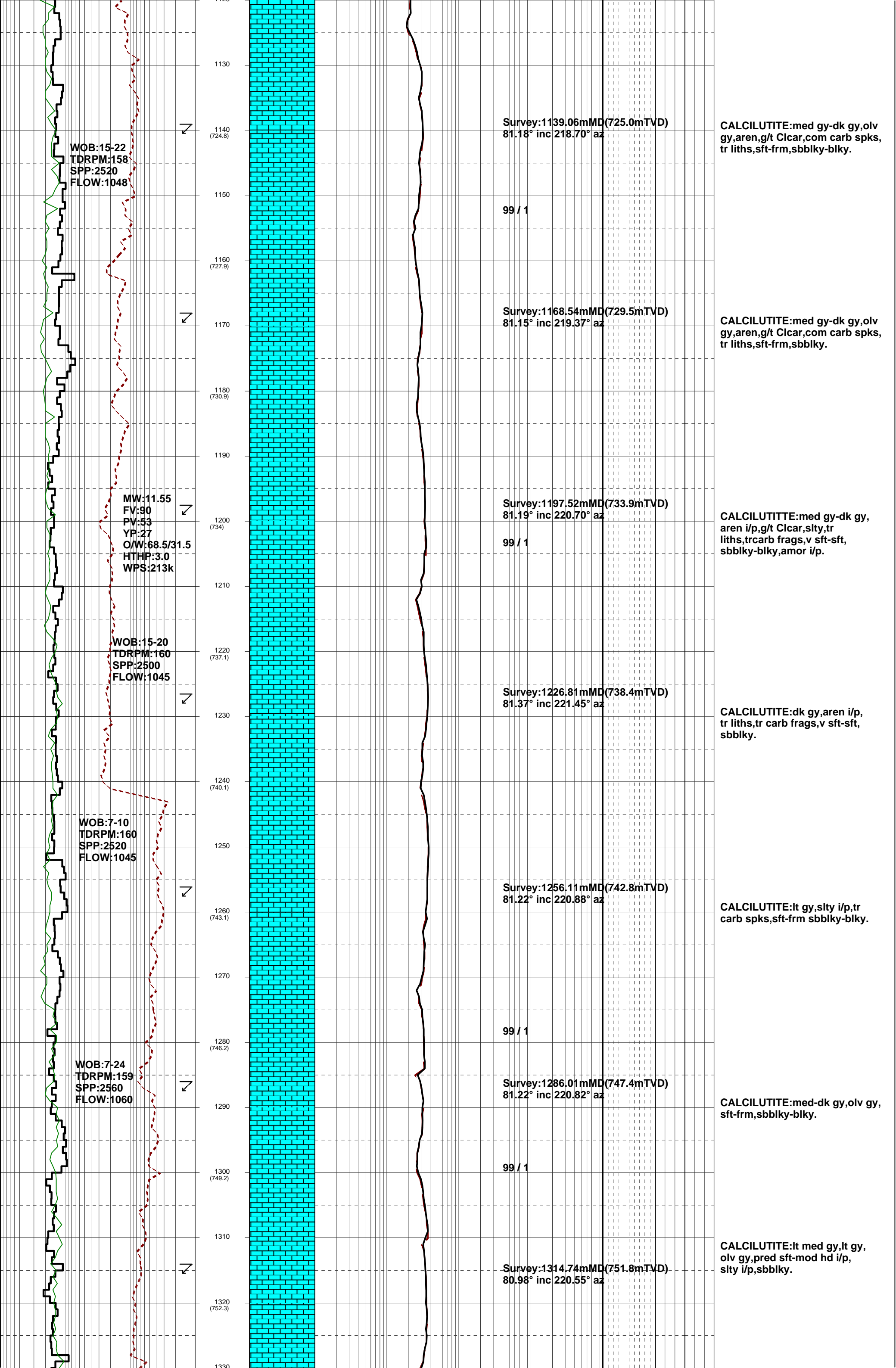


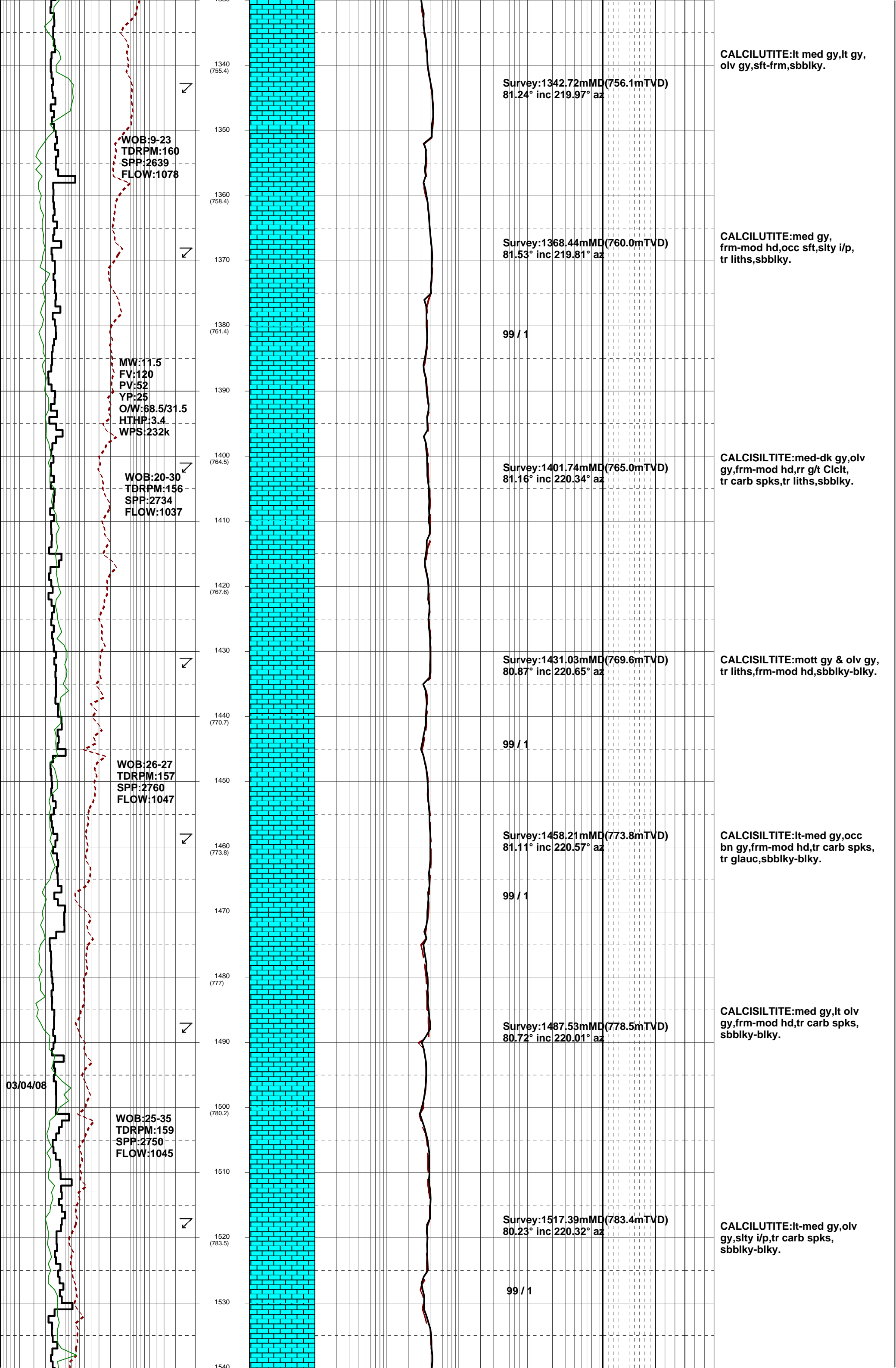
GENERAL	SURFACE POSITION	HOLE / CASING INFO	DATE / DEPTH	ENGINEERS
Country : AUSTRALIA	Longitude :148°01'31.298" E	12-1/4" Hole to 4031.0m MDRT	Kick off Date: 31/03/2008	Mark Smith
Permit : VIC / L10	Latitude : 38°11'37.84" S	8-1/2" Hole to 4888.0m MDRT	Total Depth Date: 23/04/2008	Steve Oades
Field : SNAPPER	MGA Co-ord X :589787.584 mE	13-3/8" Surface Csg at 817.2m MDRT	Total Depth: 4888.00m MDRT	Phil Rady
Basin : GIPPSLAND	MGA Co-ord Y : 5772180.379 mN	9-5/8" Csg Shoe at 4031.0m MDRT	True Vertical Depth: 1983.05m TVDRT	Tu Tran Vu Ahn
Well Type :DEVELOPMENT	RT to MSL : 41.68 m	7" Csg Shoe at 4882.0m MDRT	Log Scale : 1/ 500	Paul Currie
Rig Name : Nabors 175	RT to Sea Bed : 96.68 m	7" Liner Lap at 3658.7m MDRT		Hassan Saroya

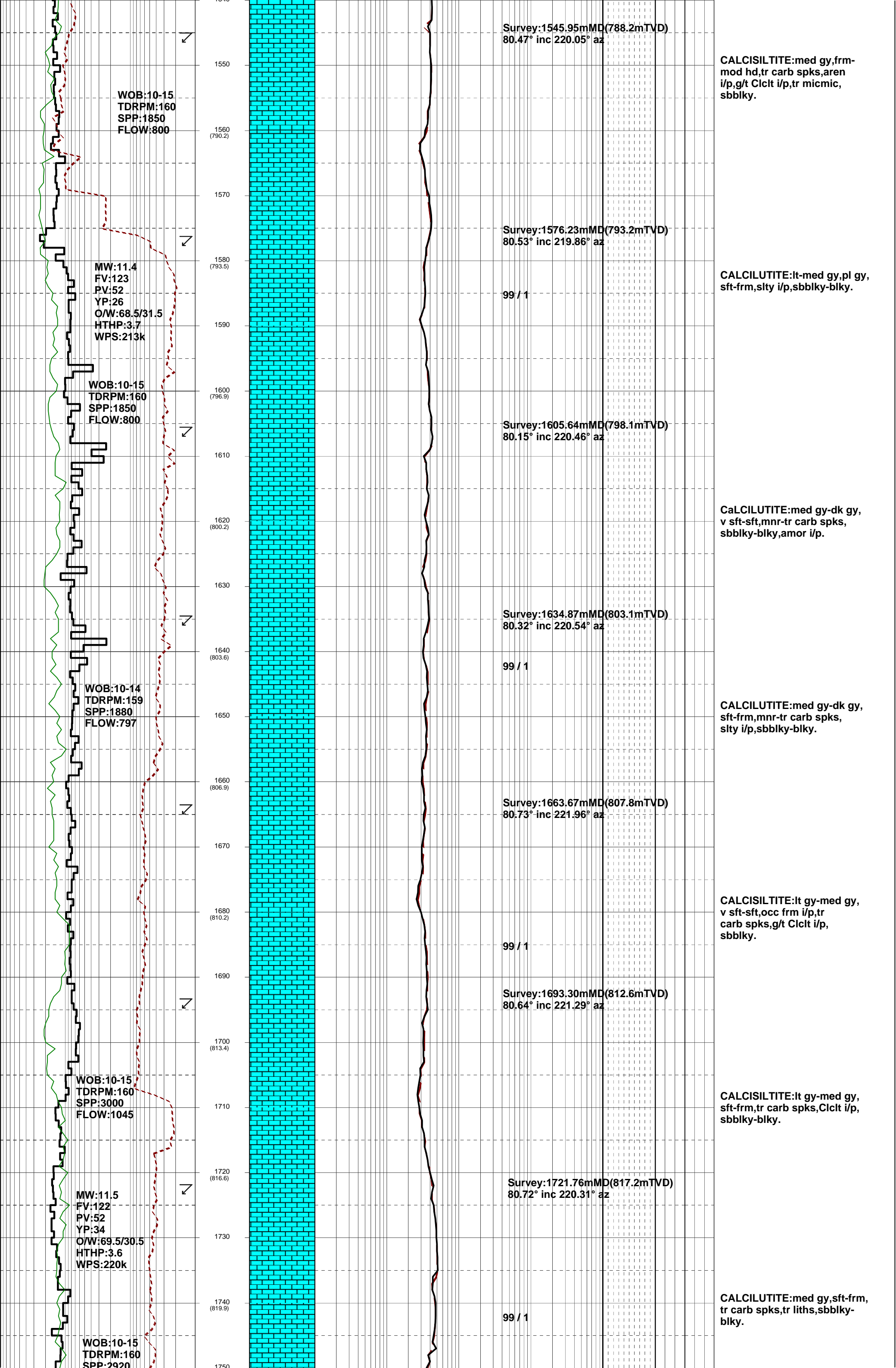
ABBREVIATIONS				LITHOLOGY LEGEND				ENGINEERING LEGEND			
MW	Mud Weight	WOB	Weight on Bit (klbs)		Claystone		Marl		Bryozoa		Glauconite
FV	Funnel Viscosity	RPM	Rotations Per Min		Siltstone		Limestone		Radiolaria		Pyrite
PV	Plastic Viscosity	FLW	Flow Rate (gpm)		Sandstone		Dolomite		Echinoids		
YP	Yield Point	SPP	Pump Pressure (psi)		Shale		Coal		Foraminifera		
O/W	Oil/Water Ratio	RR	Re-Run Bit		Conglomerate		Volcanic		Cement		
WPS	Aq. Phase Salinity	TG	Trip Gas								
HPHT	Fluid Loss	CG	Connection Gas								
Cl	Chlorides	BG	Background Gas								
Incl	Inclination	DGP	Drilled Gas Peak								
Az	Azimuth	MM	Mud Motor								

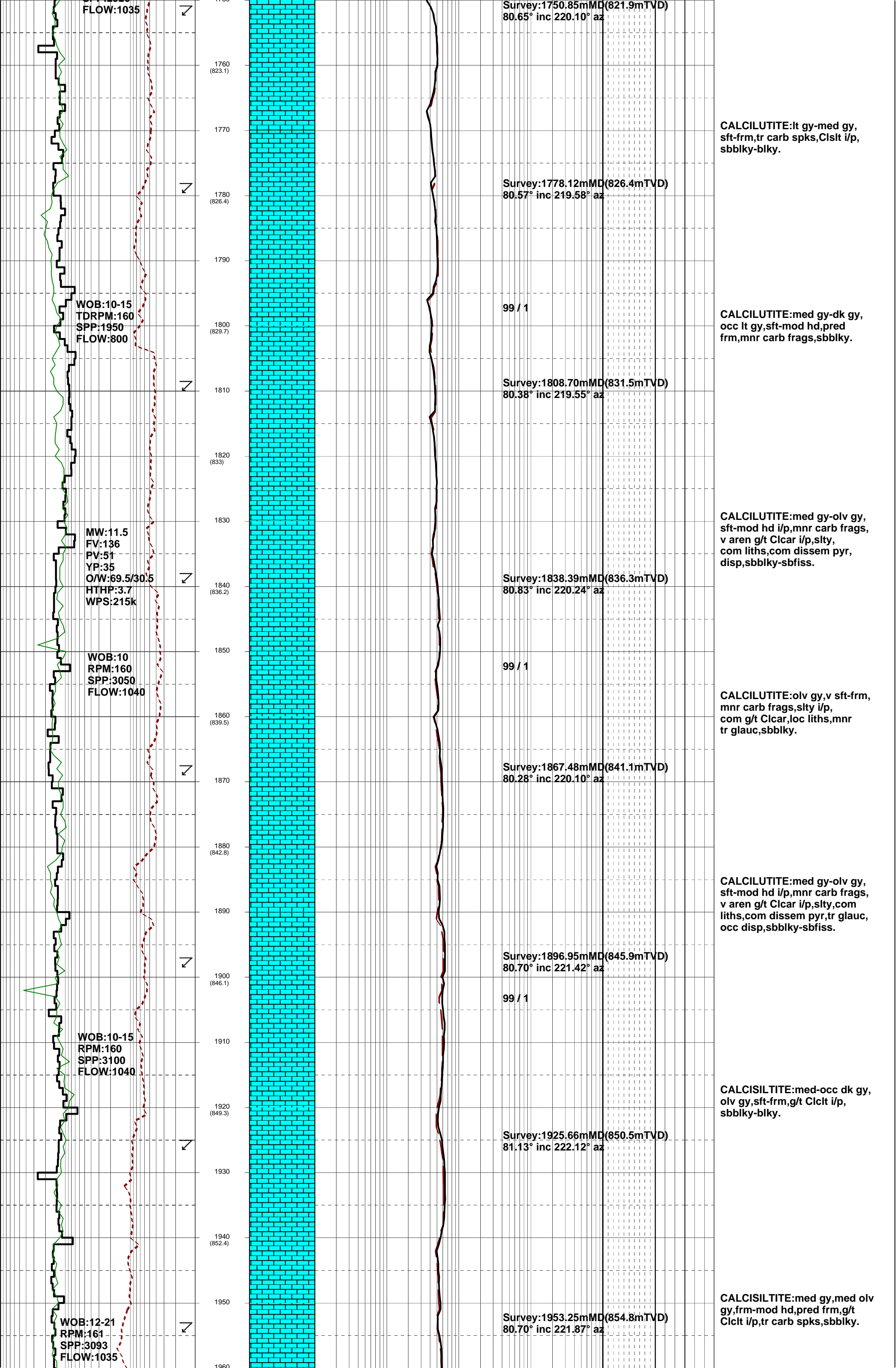


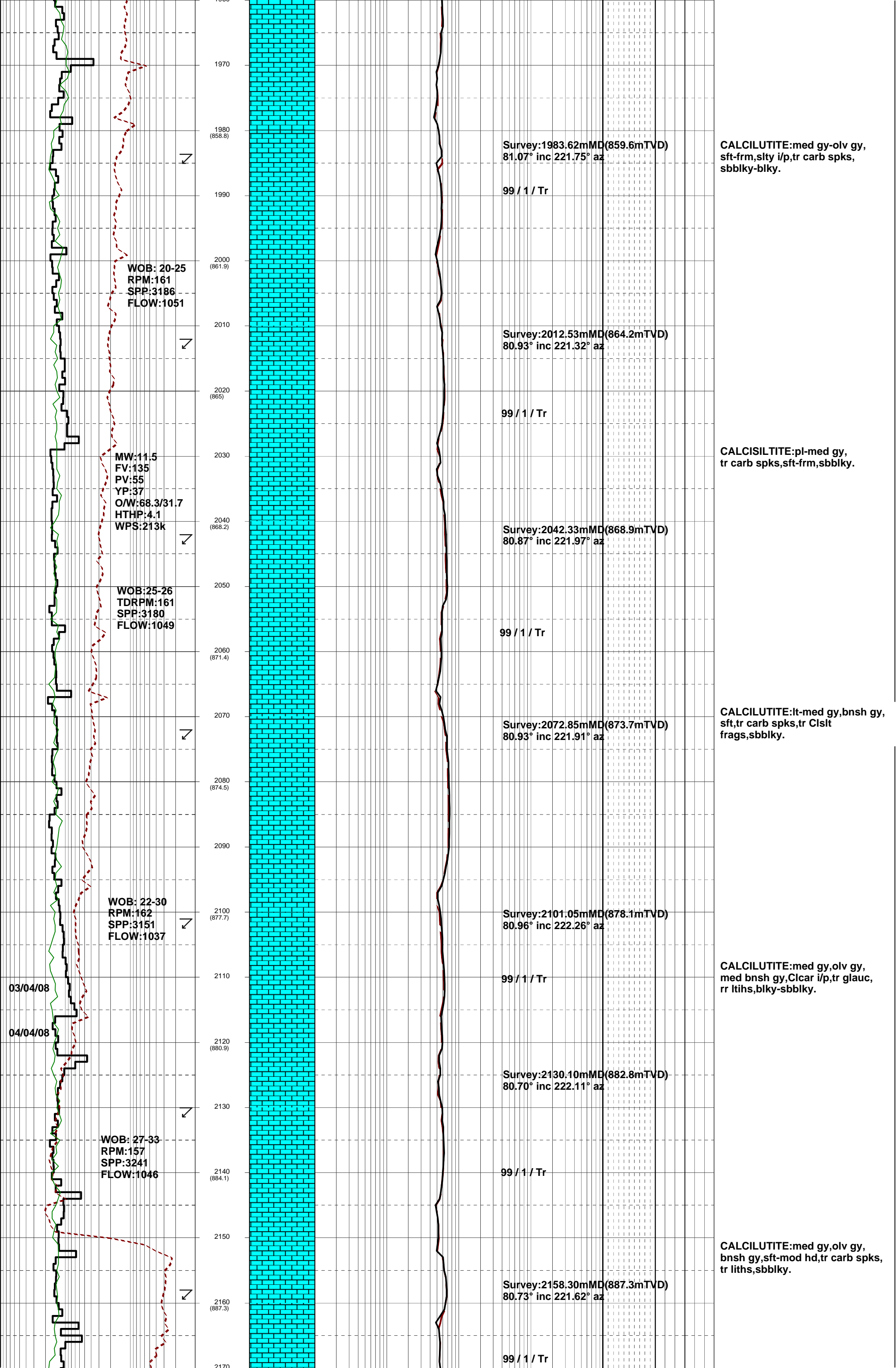


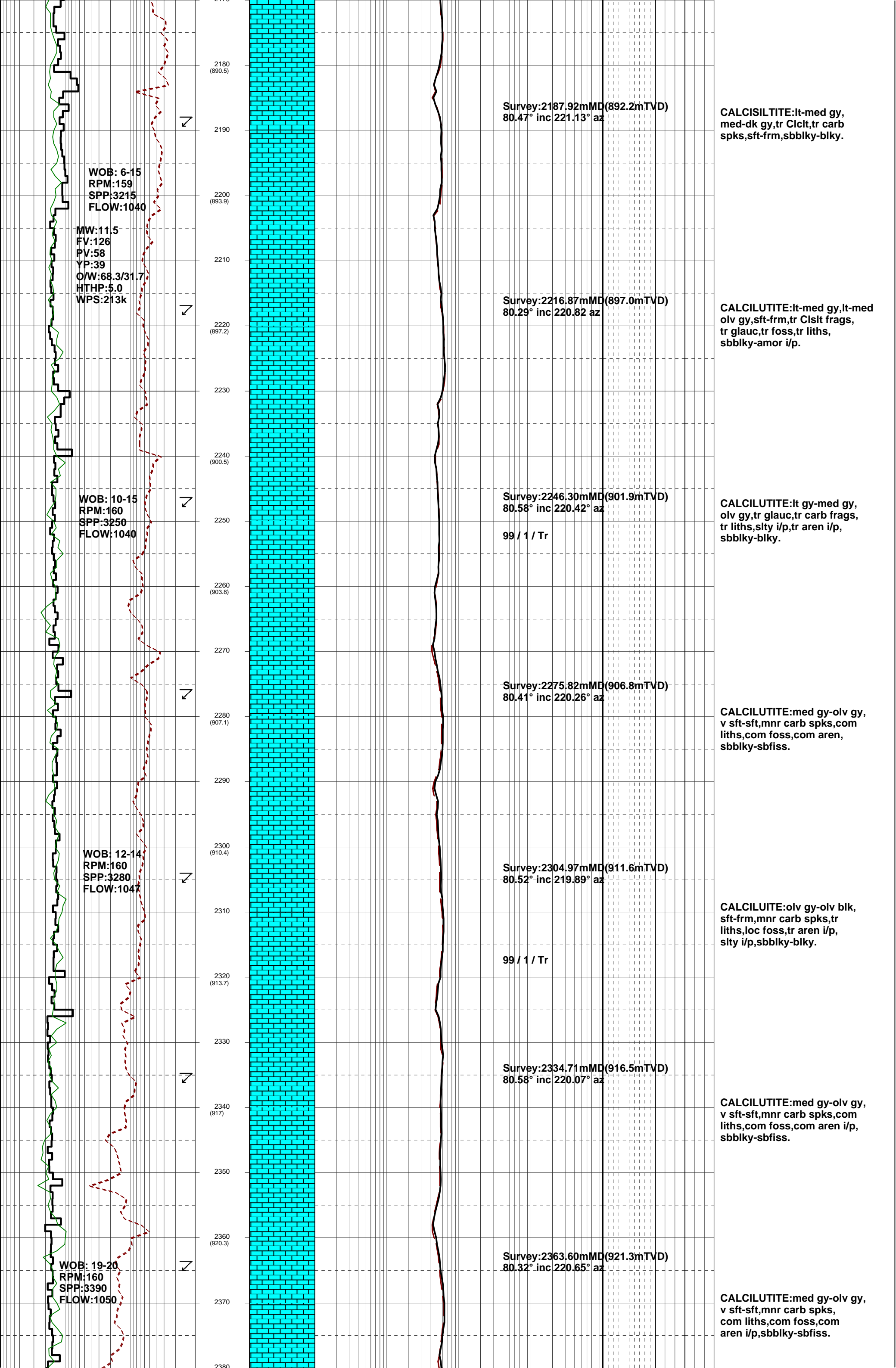


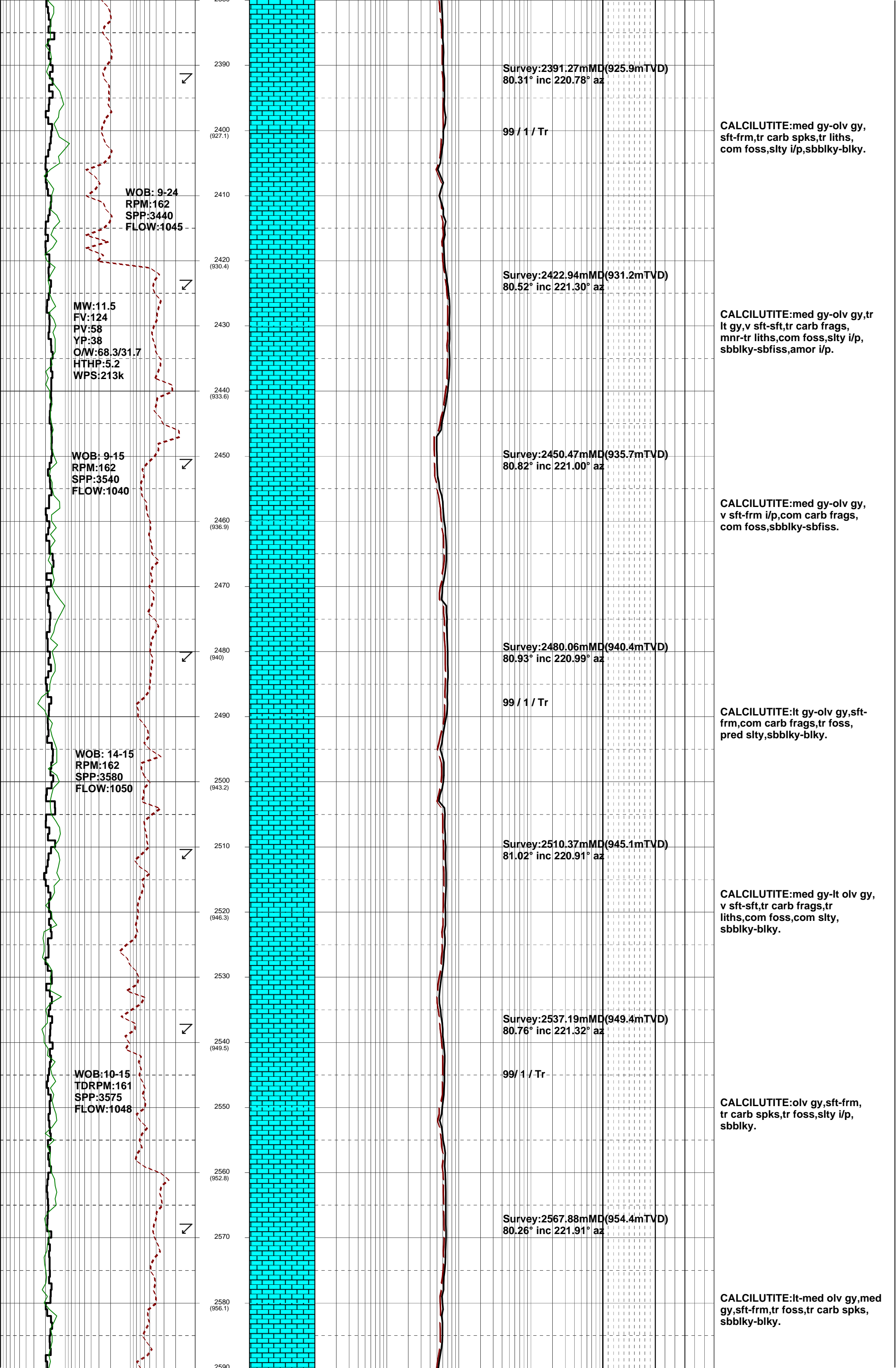


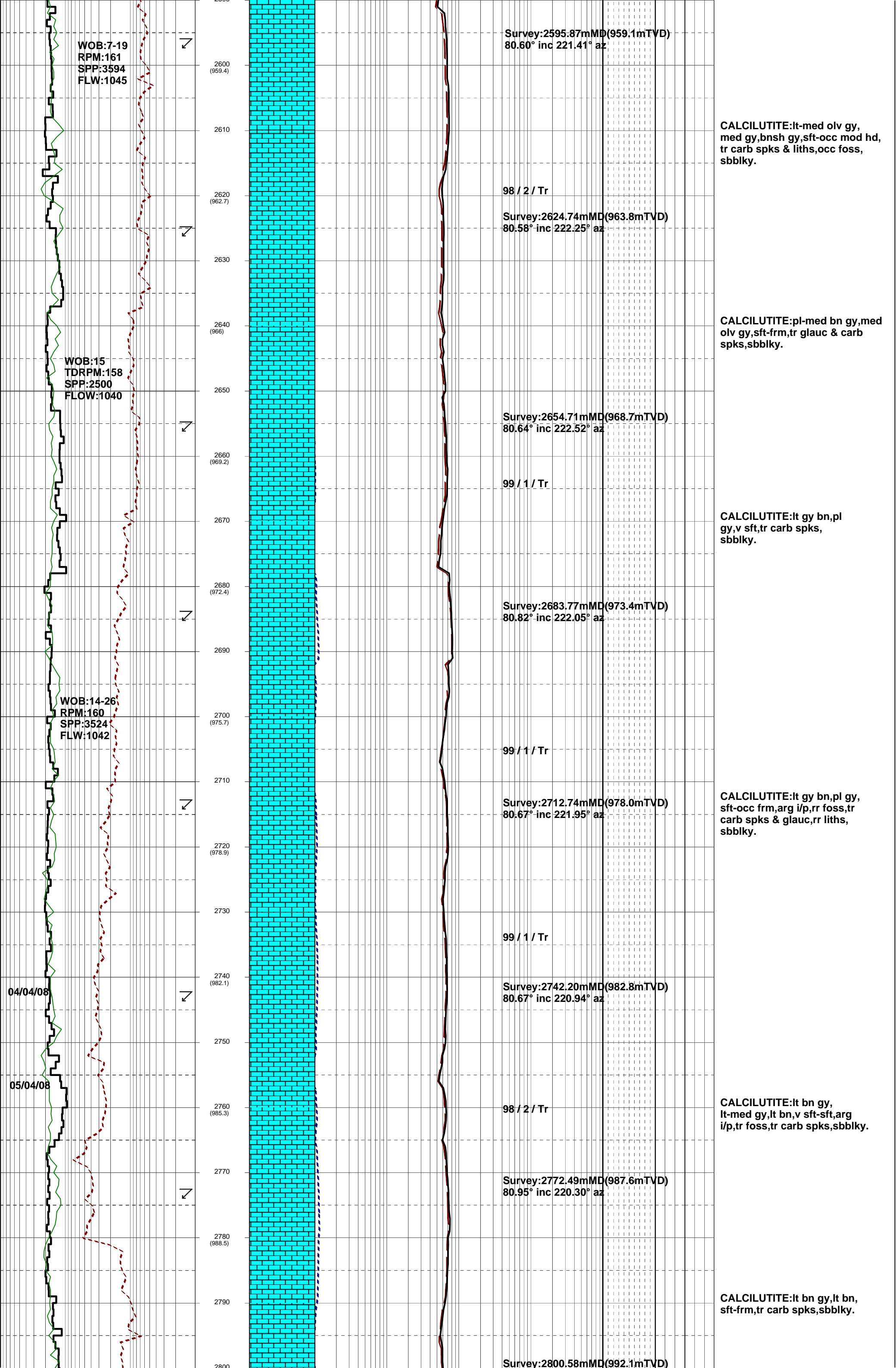


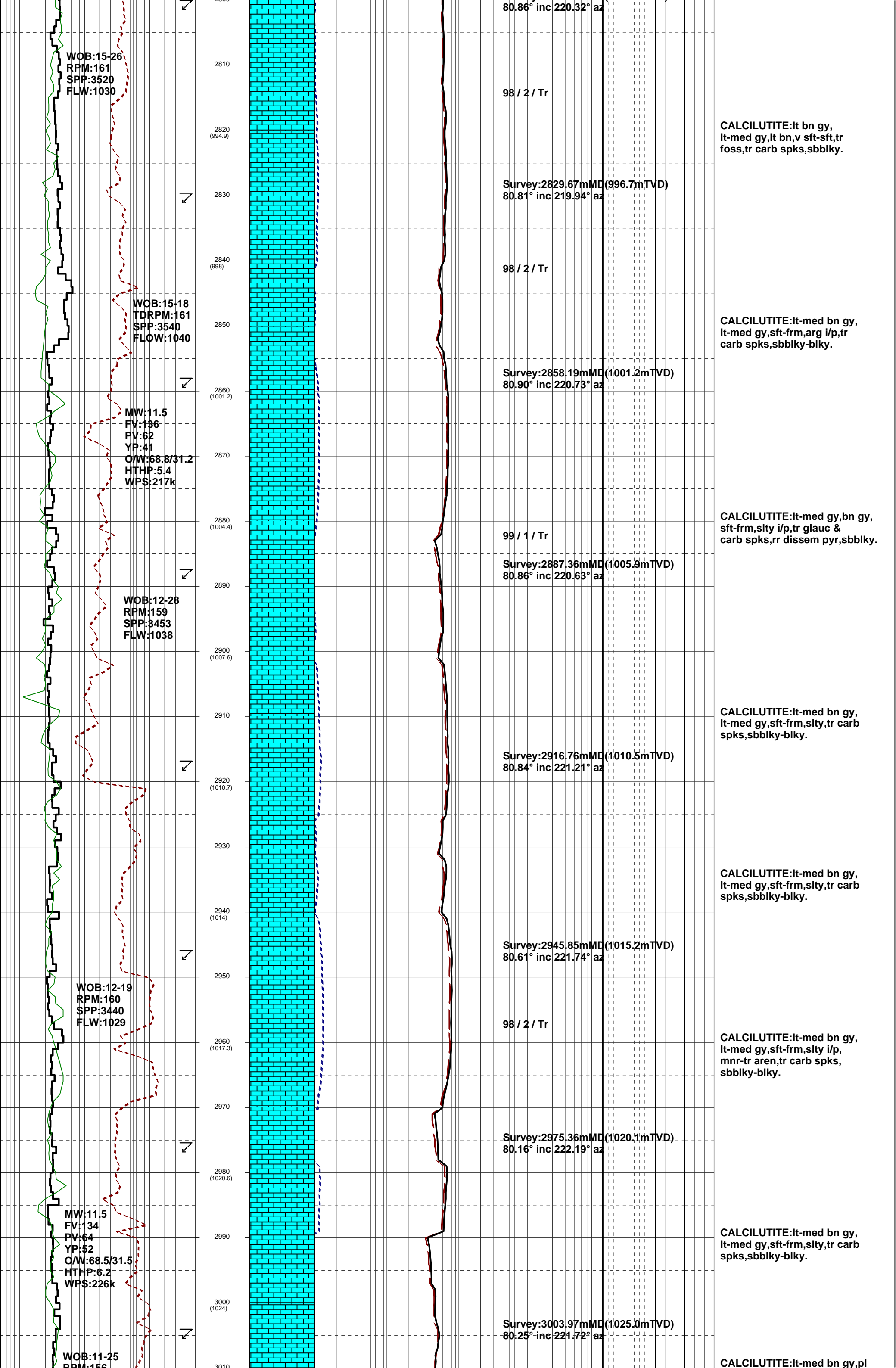


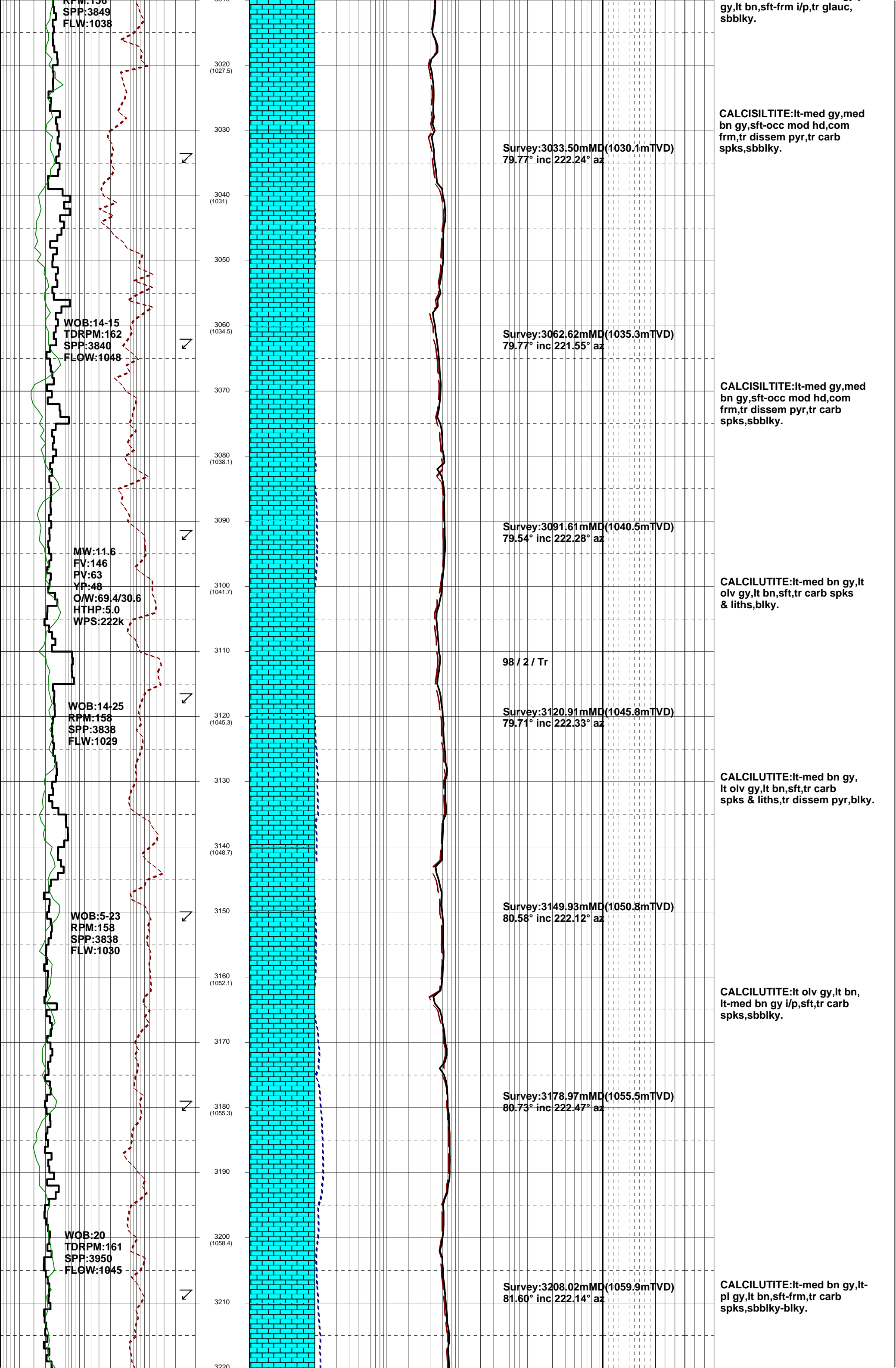


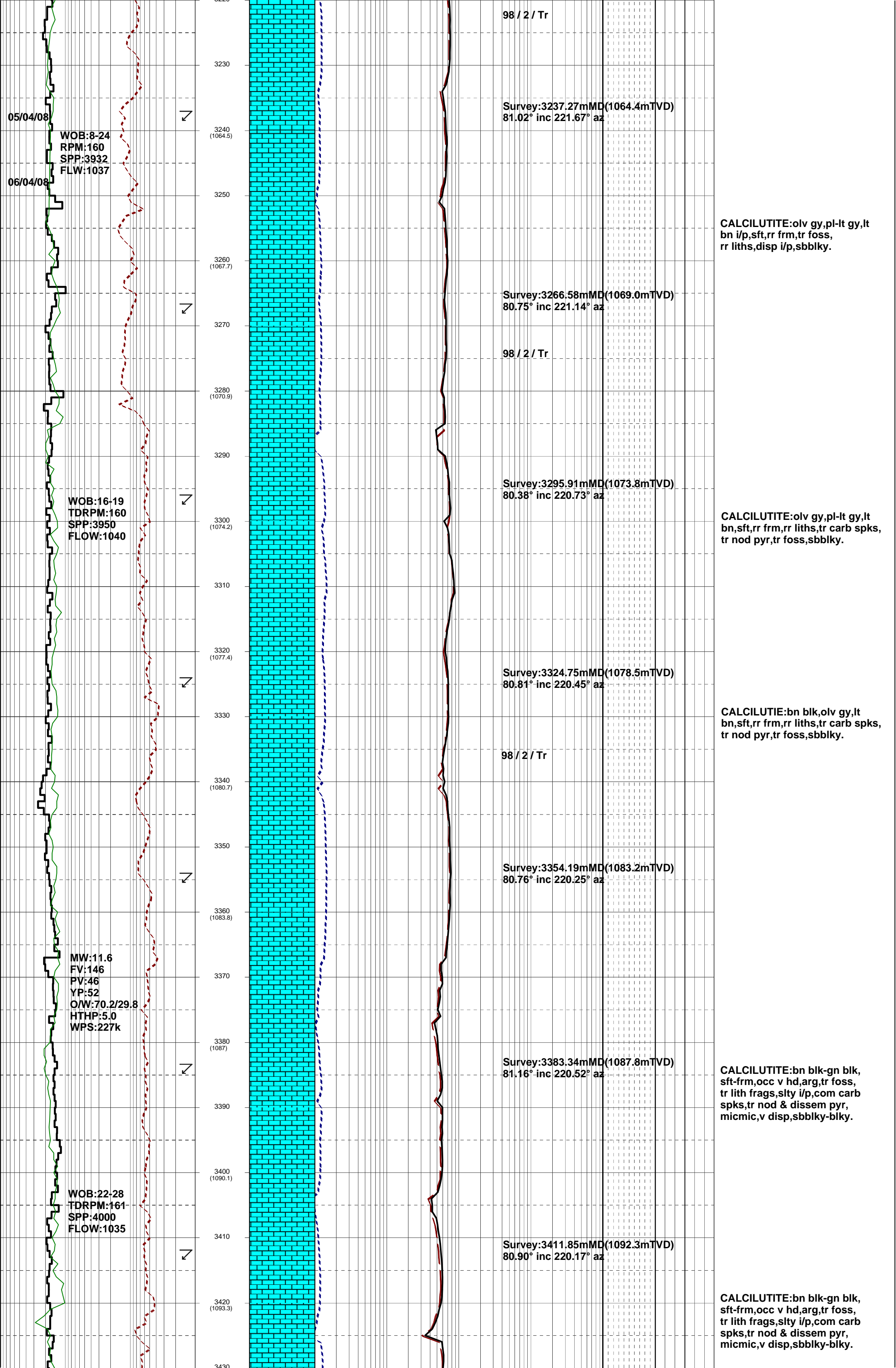


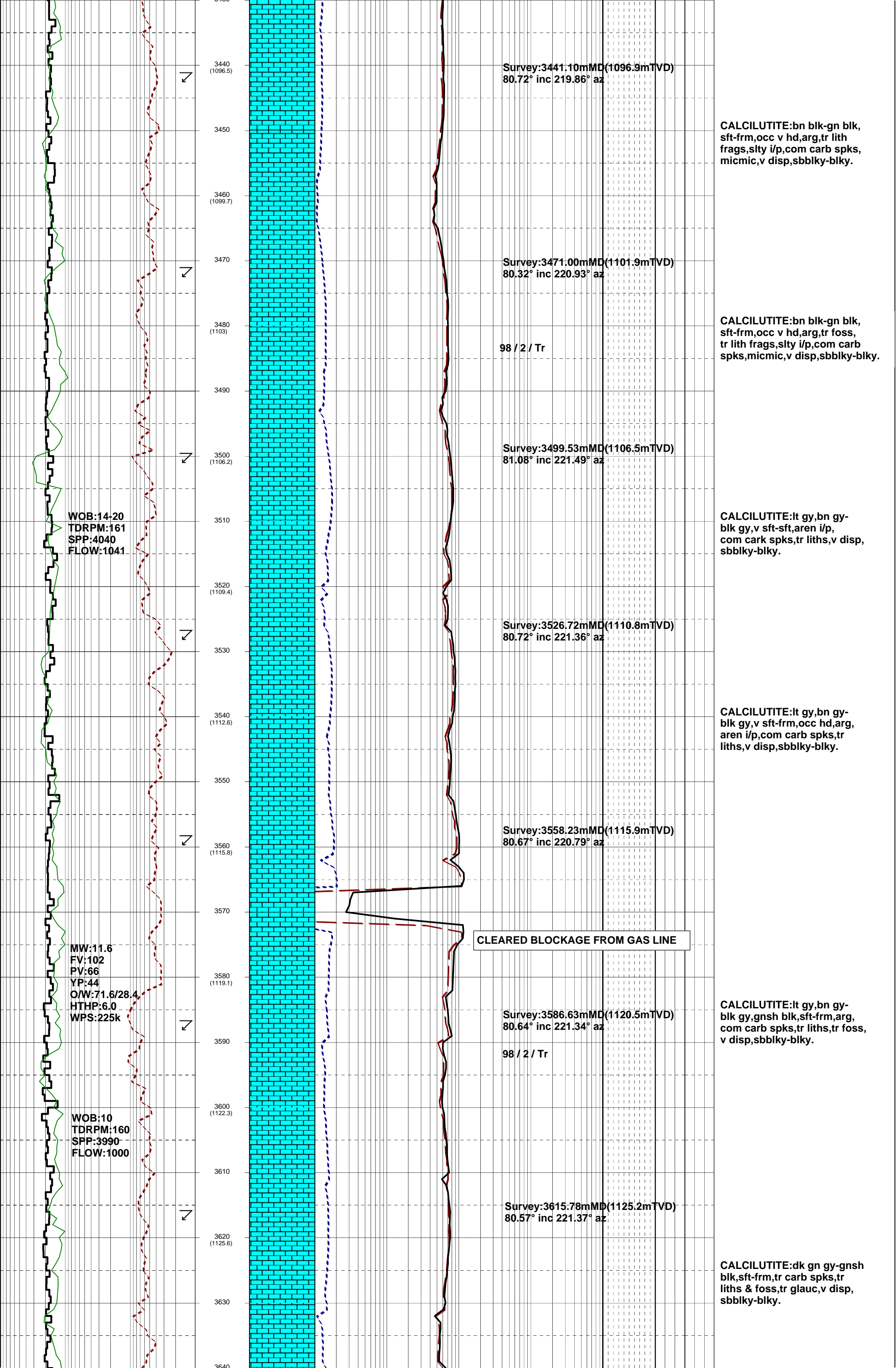


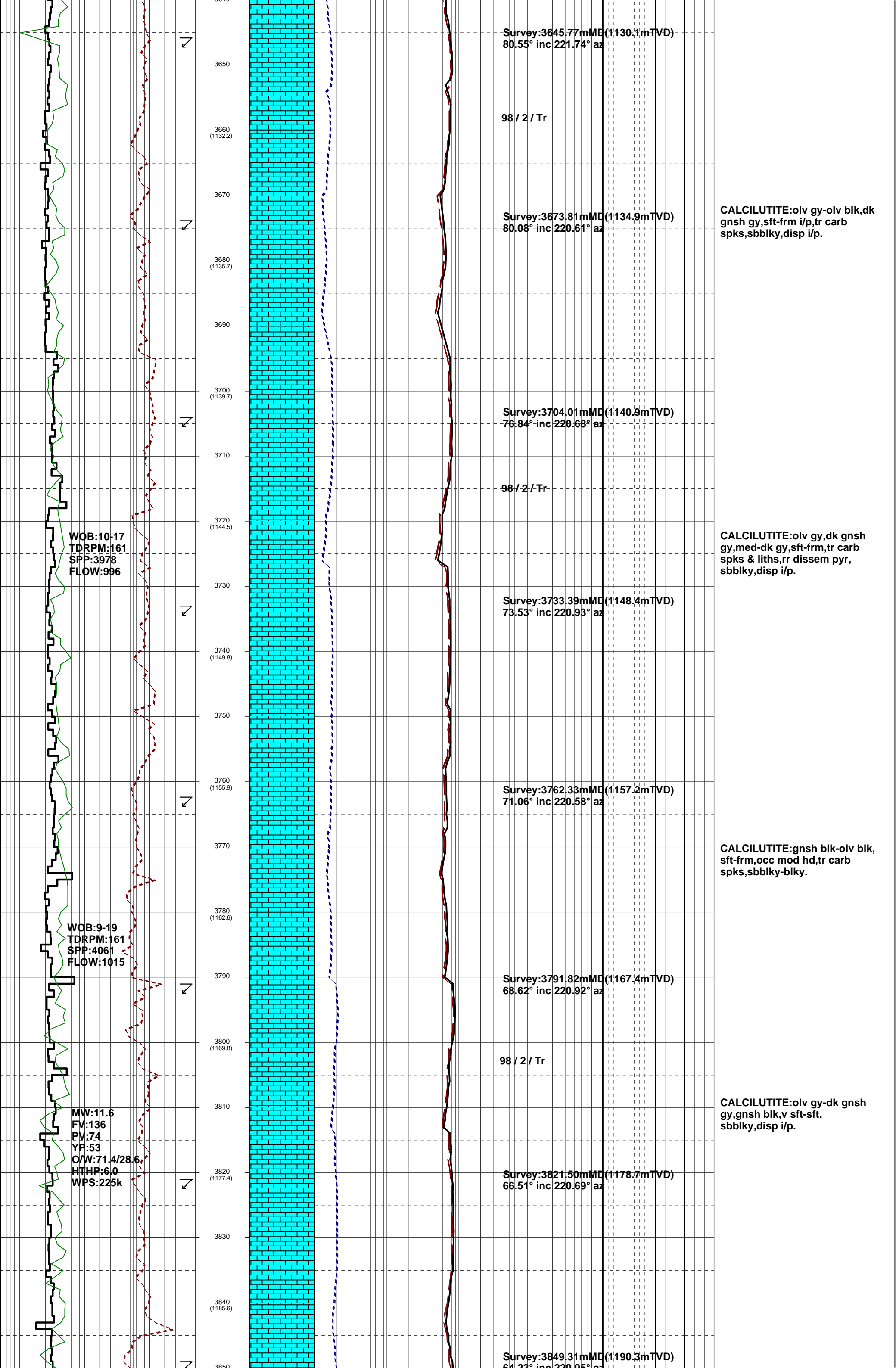


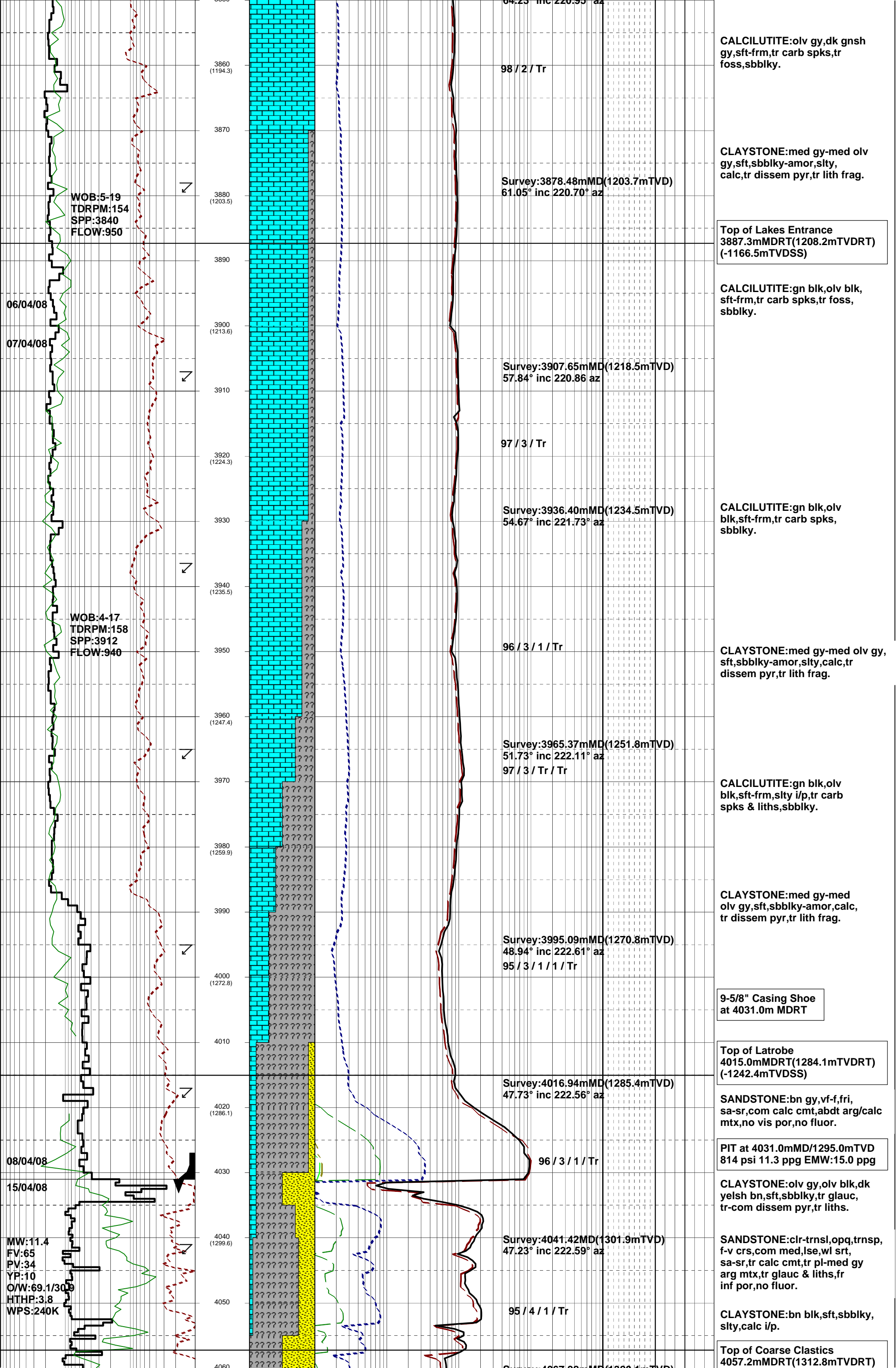


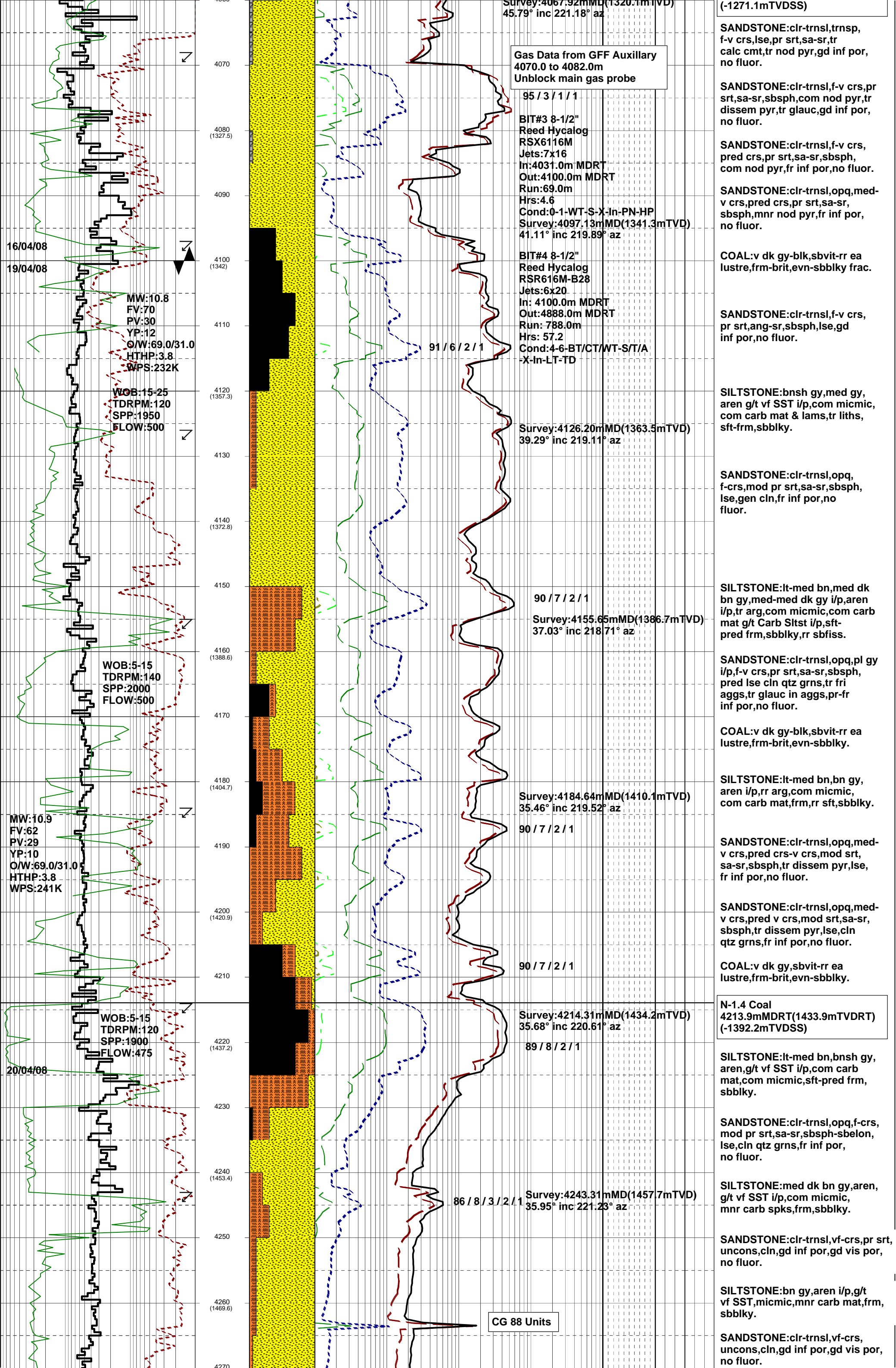


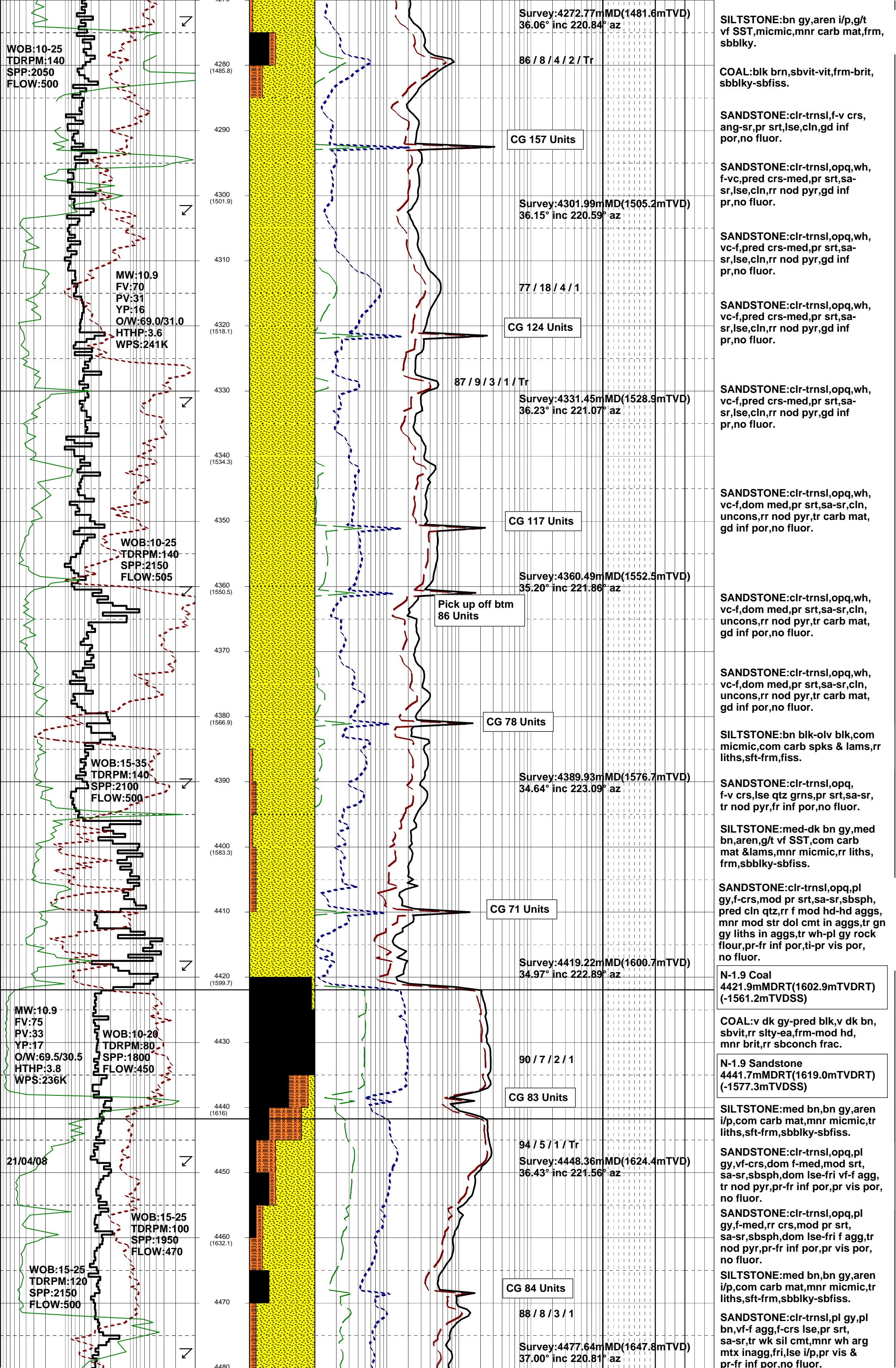


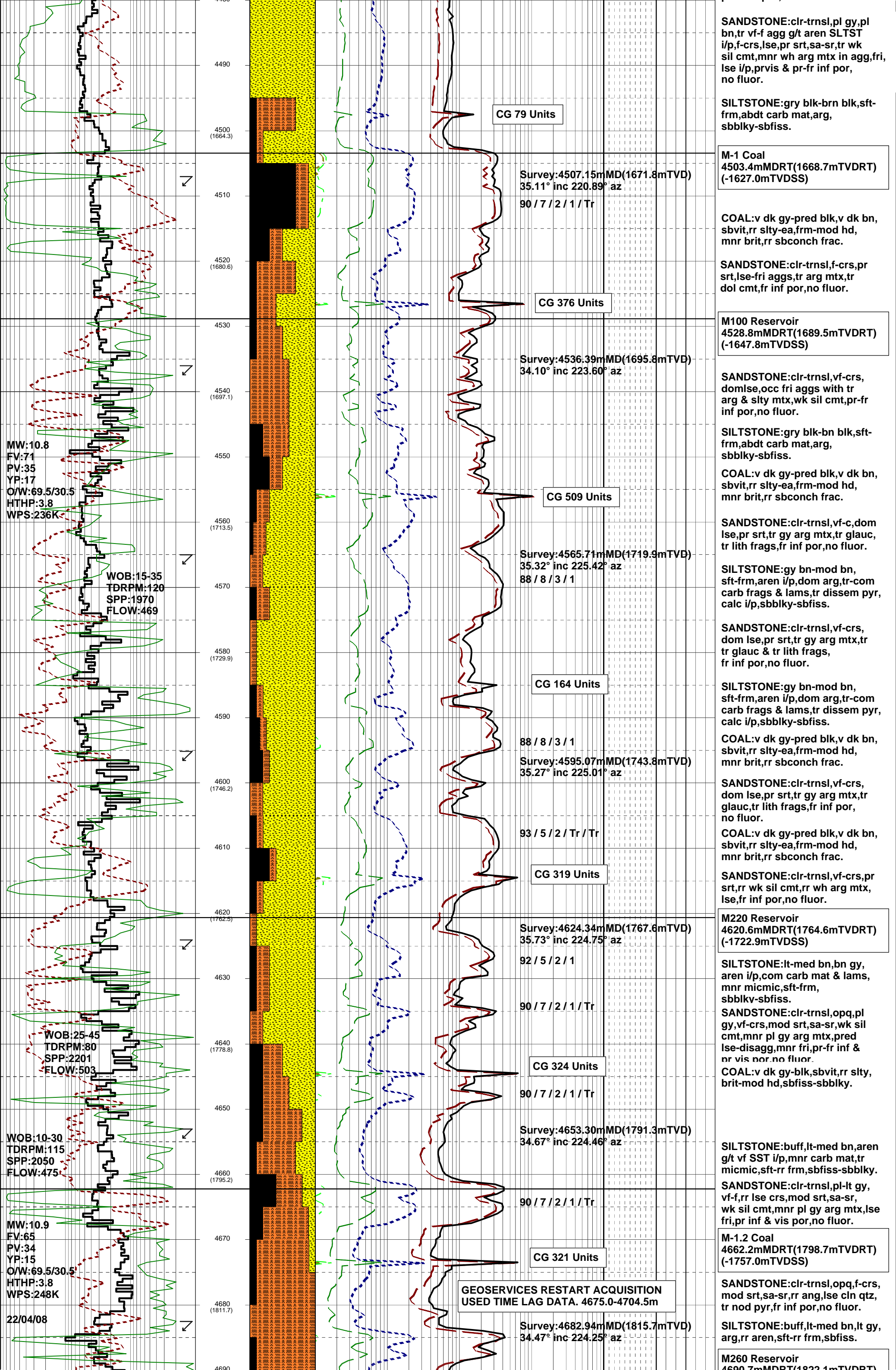


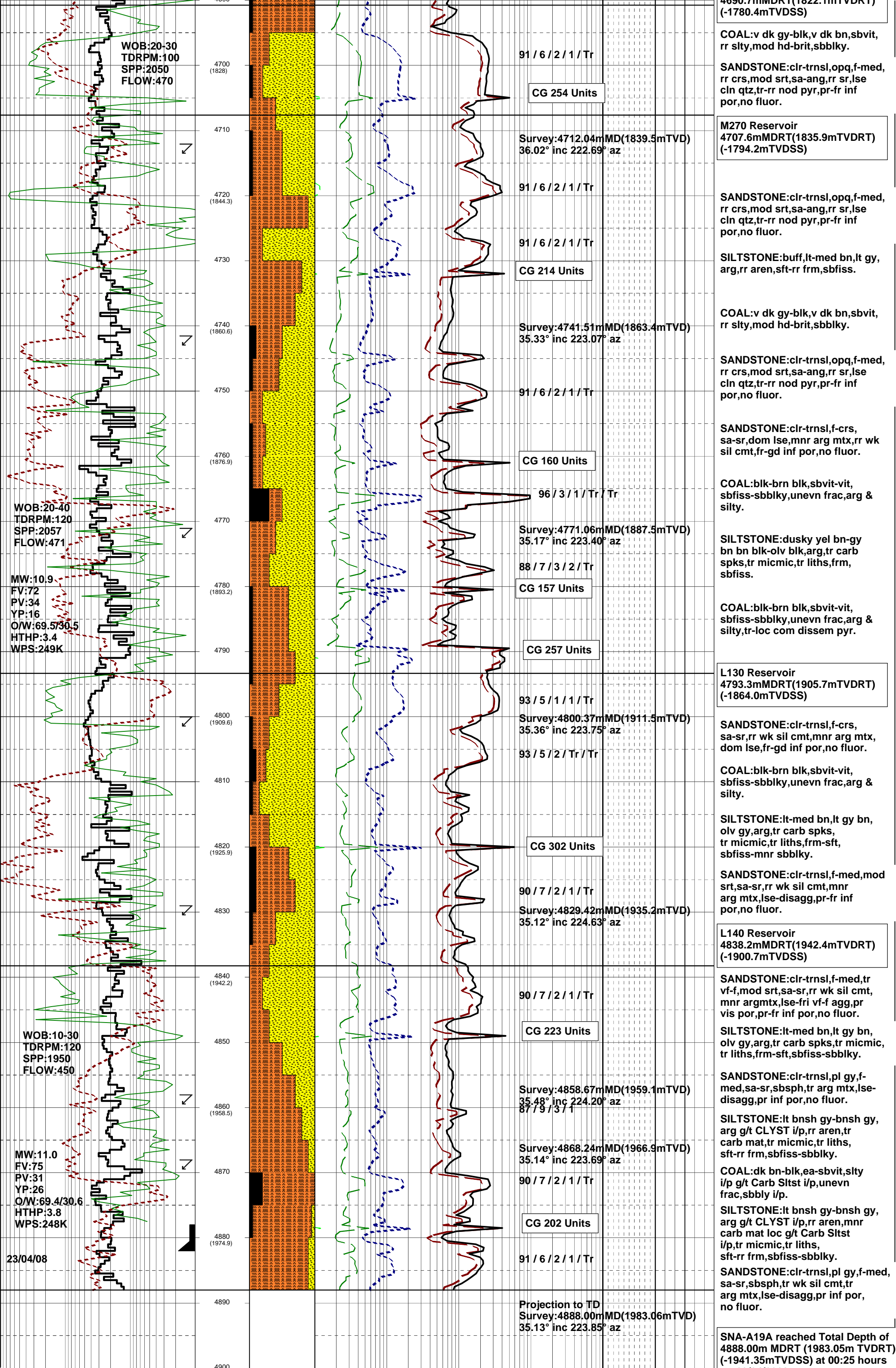












on 23/04/2008.

7" Liner set at 4882.0m MDRT
7" Liner Lap at 3658.7m MDRT