

[illegible]

Company: Esso Australia Pty Ltd.

Well: A-17A

Field: Flounder

Rig: Crane / Prod4

Country: Australia

2-1/8" Phased Powerjet MWPT
Perforation Record

4 1/2" Posiset Plug Setting Record

Field: Flounder
Location: Gippsland
Well: A-17A
Company: Esso Australia Pty Ltd.

LOCATION

Gippsland	Elev.: K.B. 40.8 m
Basin	G.L. -93 m
Bass Strait	D.F. 40.8 m
Permanent Datum:	M.S.L.
Log Measured From:	K.B.
Drilling Measured From:	K.B.
	Elev.: 0 m
	40.8 m above Perm. Datum

State: Victoria	Max. Well Deviation 49 deg	Longitude 148° 26' 21.748"E	Latitude 38° 18' 39.245"S
-----------------	----------------------------	-----------------------------	---------------------------

Logging Date

Run Number

Depth Driller

Schlumberger Depth

Bottom Log Interval

Top Log Interval

Casing Fluid Type

Salinity

Density

Fluid Level

BIT/CASING/TUBING STRING

Bit Size

From

To

Casing/Tubing Size

Weight

12.6 lbm/ft

Grade

N-80

From

To 2600 m

3656.25 m

228 degF

11-Sep-2008

7:45

889

Prod 4 / AUSL

G Wright.

D Madden.

PVT DATA

Oil Density	Run 1	Run 2	Run 3
Water Salinity			
Gas Gravity			
Bo			
Bw			
1/Bg			
Bubble Point Pressure			
Bubble Point Temperature			
Solution GOR			
Maximum Deviation	49 deg		
CEMENTING DATA			
Primary/Squeeze	Primary		
Casing String No			
Lead Cement Type			
Volume			
Density			
Water Loss			
Additives			
Tail Cement Type			
Volume			
Density			
Water Loss			
Additives			
Expected Cement Top			

Logging Date

Run Number

Depth Driller

Schlumberger Depth

Bottom Log Interval

Top Log Interval

Casing Fluid Type

Salinity

Density

Fluid Level

BIT/CASING/TUBING STRING

Bit Size

From

To

Casing/Tubing Size

Weight

Grade

From

To

Maximum Recorded Temperatures

Logger On Bottom

Unit Number

Location

Recorded By

Witnessed By

DEPTH SUMMARY LISTING

Date Created: 10-SEP-2008 9:58:39

Depth System Equipment

Depth Measuring Device		Tension Device		Logging Cable	
Type:	IDW-B	Type:	PSDS/OSDS	Type:	2-32ZT
Serial Number:	6373	Serial Number:	325357	Serial Number:	208196
Calibration Date:	01-Dec-2007	Calibration Date:	02-Sep-2008	Length:	6939.99 M
Calibrator Serial Number:	9	Calibrator Serial Number:	1174	Conveyance Method: Wireline Rig Type: Rigless	
Calibration Cable Type:	2-32ZT	Calibration Gain:	0.96		
Wheel Correction 1:	-4	Calibration Offset:	-162.00		
Wheel Correction 2:	-2				

Depth Control Parameters

Log Sequence:	Subsequent Log In the Well
Reference Log Name:	
Reference Log Run Number:	
Reference Log Date:	06-Sep-2007

Depth Control Remarks

1. IDW-BE used as primary depth control.
2. Z-Chart used as back up.
3.
4.
5.
6.

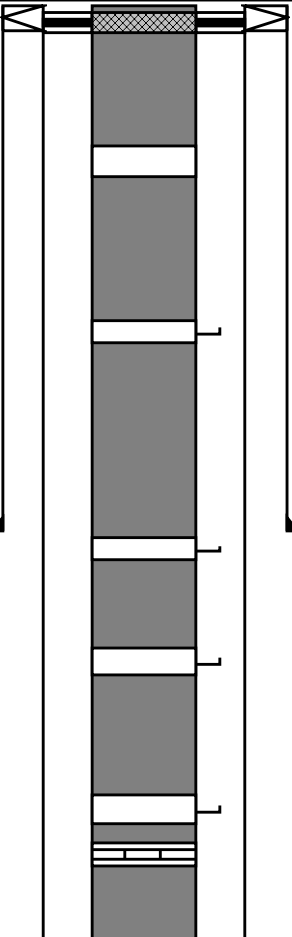
DISCLAIMER

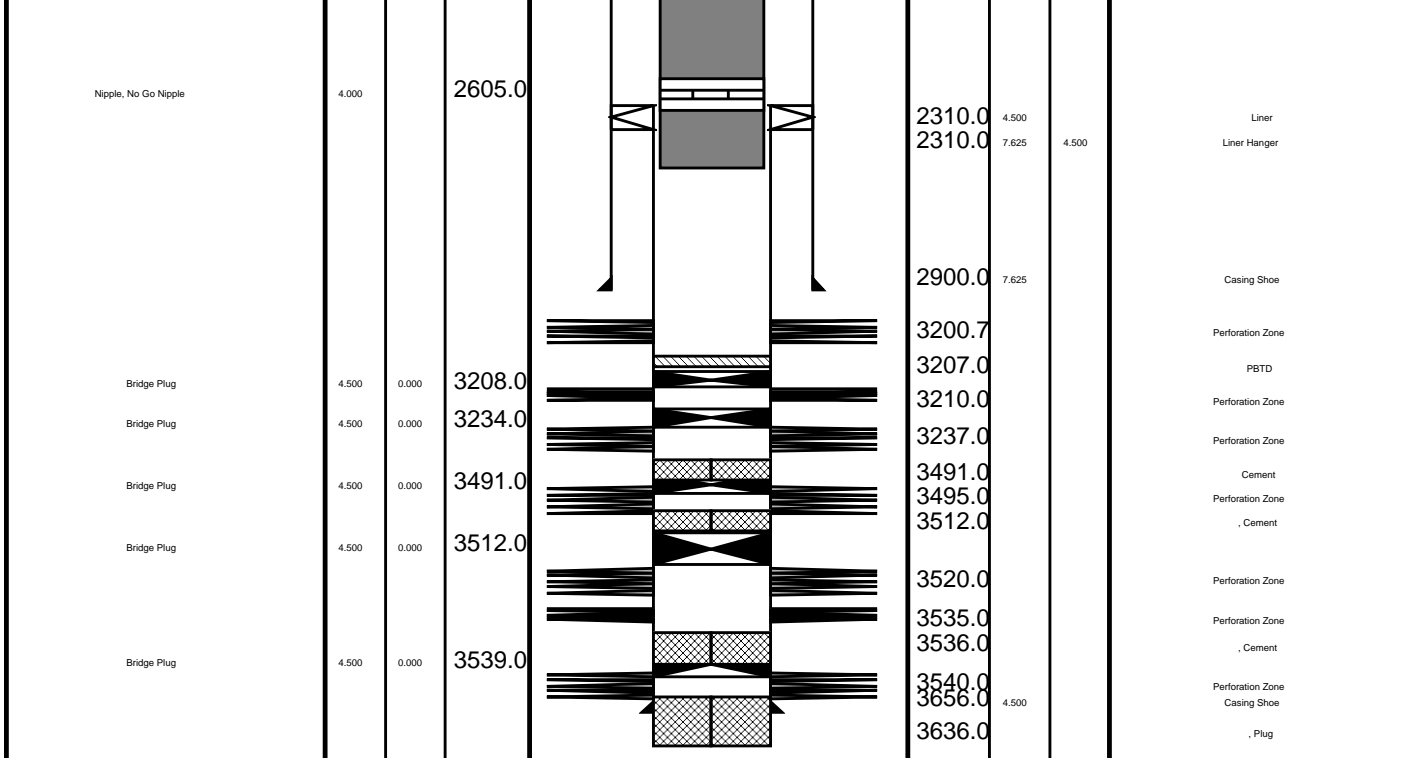
THE USE OF AND RELIANCE UPON THIS RECORDED-DATA BY THE HEREIN NAMED COMPANY (AND ANY OF ITS AFFILIATES, PARTNERS, REPRESENTATIVES, AGENTS, CONSULTANTS AND EMPLOYEES) IS SUBJECT TO THE TERMS AND CONDITIONS AGREED UPON BETWEEN SCHLUMBERGER AND THE COMPANY, INCLUDING: (a) RESTRICTIONS ON USE OF THE RECORDED-DATA; (b) DISCLAIMERS AND WAIVERS OF WARRANTIES AND REPRESENTATIONS REGARDING COMPANY'S USE OF AND RELIANCE UPON THE RECORDED-DATA; AND (c) CUSTOMER'S FULL AND SOLE RESPONSIBILITY FOR ANY INFERENCE DRAWN OR DECISION MADE IN CONNECTION WITH THE USE OF THIS RECORDED-DATA.

OTHER SERVICES1	OTHER SERVICES2
OS1: RST-C Sigma	OS1:
OS2: Survey	OS2:
OS3:	OS3:
OS4:	OS4:
OS5:	OS5:
REMARKS: RUN NUMBER 1	REMARKS: RUN NUMBER 2
Log correlated to ExxonMobil Composite Log supplied with logging program.	
Maximum well deviation = 49 degree's at 2946m MDKB.	
Run two was the 1 mtr 2 1/8" Phased Powerjet gun at 6/spf.	
Interval perforated was 3200.7m to 3201.7m MDKB.	
SBHP = 3186 psia, SBHT = 230 degf.	
The well was shot with an underbalance of 200 psia.	
Run 4 was the 4 1/2" Mpbtp plug set at 3208m MDKB.	
Runs 5 and 6 were water and cement dump passes.	

Crew : Chris Shiells & Kev Kerr.					
<div> <div>RUN 1</div> <div> <div>SERVICE ORDER #:</div> <div>PROGRAM VERSION:</div> <div>FLUID LEVEL:</div> </div> <div> <div>AUSL08602235</div> <div>15C0-309</div> <div>870 m</div> </div> </div>			<div> <div>RUN 2</div> <div> <div>SERVICE ORDER #:</div> <div>PROGRAM VERSION:</div> <div>FLUID LEVEL:</div> </div> </div>		
LOGGED INTERVAL	START	STOP	LOGGED INTERVAL	START	STOP
EQUIPMENT DESCRIPTION					
RUN 1			RUN 2		
SURFACE EQUIPMENT			SURFACE EQUIPMENT		
MWPM-3008			MWPM-3008		
DOWNHOLE EQUIPMENT			DOWNHOLE EQUIPMENT		
<div> <div> <div>AH-SWBS 786</div> <div>AH-SWBS 786</div> </div> <div> <div>AH-SWBS 787</div> <div>AH-SWBS 787</div> </div> <div> <div>AH-SWBS 788</div> <div>AH-SWBS 788</div> </div> <div> <div>AH-SWHS-A 759</div> <div>AH-SWHS-A 759</div> </div> <div> <div>AH-124 7002</div> </div> <div> <div>MWGT-AA</div> <div>MWPG-AA 24029</div> <div>MWGH-AA 69</div> </div> <div> <div>MWPT-CA BLK2</div> <div>MWPH-AA 74</div> <div>MWPS-AA 74</div> </div> <div> <div> <div>AH-121 41</div> <div>AH-121 41</div> </div> <div> <div>SAH-G 1035</div> </div> </div> <div> <div> <div> <div>CCL</div> <div>SMWP Pres</div> <div>SMWP Temp</div> <div>Tension</div> </div> <div>TOOL ZERO</div> </div> </div> <div> <div> <div> <div>11.53</div> <div>10.84</div> <div>10.16</div> <div>9.47</div> <div>9.14</div> <div>8.99</div> <div>8.01</div> <div>5.19</div> <div>4.52</div> </div> </div> </div> </div>			<div> <div> <div>AH-SWBS 786</div> <div>AH-SWBS 786</div> </div> <div> <div>AH-SWBS 787</div> <div>AH-SWBS 787</div> </div> <div> <div>AH-SWBS 788</div> <div>AH-SWBS 788</div> </div> <div> <div>AH-SWHS-A 759</div> <div>AH-SWHS-A 759</div> </div> <div> <div>AH-124 7002</div> </div> <div> <div>MWGT-AA</div> <div>MWPG-AA 24029</div> <div>MWGH-AA 69</div> </div> <div> <div>MWPT-CA BLK2</div> <div>MWPH-AA 74</div> <div>MWPS-AA 74</div> </div> <div> <div> <div>EQF-43</div> <div>EQE-43</div> </div> </div> </div> <div> <div> <div> <div>10.93</div> <div>10.25</div> <div>9.56</div> <div>8.87</div> <div>8.54</div> <div>8.39</div> <div>7.42</div> <div>4.60</div> </div> </div> </div>		

2.77

Production String	(m)		MD	Well Schematic	(m)		MD	(m)		Casing String
	OD	ID			OD	ID		OD	ID	
Tubing Tubing Hanger	4.000		12.4		13.6	10.025		Casing String		
	7.625	4.000	11.0		13.5	10.750	7.625	Liner Hanger		
SSSV	4.000		453.8							
Gas Lift Mandrel	4.000		871.0							
Gas Lift Mandrel	4.000		1385.0			1256.0	10.750	Casing Shoe		
Gas Lift Mandrel	4.000		1646.0							
Gas Lift Mandrel	4.000		2089.0							
Nipple, Landing Nipple	4.000		2106.0							



Job Event Summary

MAXIS Field Log

Schlumberger Job Event Summary

Time	Elapsed Time	Depth (M)	File
Log Pass (down)	11-Sep-2008 7:27 000:23	1282.1 – 3215.5	PERFO_022LDP
Log Pass (up)	11-Sep-2008 7:50 000:03	3215.5 – 3190.8	PERFO_023LUP
Log Pass (up)	11-Sep-2008 7:56 000:05	3217.0 – 3183.5	PERFO_024LUP
Log Pass (down)	11-Sep-2008 8:03 000:00	3213.2 – 3216.1	PERFO_025LDP
Log Pass (up)	11-Sep-2008 8:03 000:06	3219.6 – 3173.6	PERFO_026LUP
Log Pass (up)	11-Sep-2008 8:13 000:08	3212.0 – 3178.8	PERFO_028LUP
Log Pass (up)	11-Sep-2008 8:26 000:40	3212.7 – 3174.2	PERFO_029LUP
Station Log	11-Sep-2008 8:29 000:31	3197.2 – 4.7	PERFO_030LTP
Log Pass (down)	11-Sep-2008 10:47 000:27	388.5 – 3233.8	PERFO_032LDP
Log Pass (up)	11-Sep-2008 11:14 000:10	3233.8 – 3142.5	PERFO_033LUP
Log Pass (up)	11-Sep-2008 11:25 000:52	3143.7 – -8.7	PERFO_034LUP
Simulated Log	11-Sep-2008 12:53 000:01		CCL_036LUP
Log Pass (up)	11-Sep-2008 12:54 000:01	12192.0 – 12191.5	CCL_037LUP
Log Pass (down)	11-Sep-2008 13:06 000:44	-2.7 – 3217.6	CCL_039LDP
Log Pass (up)	11-Sep-2008 13:49 000:02	3217.6 – 3171.7	CCL_040LUP
Log Pass (up)	11-Sep-2008 13:52 000:04	3215.6 – 3170.2	CCL_041LUP
Log Pass (up)	11-Sep-2008 13:58 000:03	3215.6 – 3178.6	CCL_042LUP

Simulated Log	11-Sep-2008 14:10 000:13	CCL_043LUP
Simulated Log	11-Sep-2008 14:24 000:01	CCL_044LUP
Log Pass (up)	11-Sep-2008 14:25 000:02	3184.9 - 3118.7 CCL_045LUP
Log Pass (up)	11-Sep-2008 15:03 000:08	72.2 - -7.9 CCL_046LUP
Simulated Log	11-Sep-2008 16:05 000:09	PERFO_047LDP
Log Pass (down)	11-Sep-2008 16:14 000:26	220.1 - 3202.5 PERFO_048LDP
Log Pass (up)	11-Sep-2008 16:40 000:03	3202.5 - 3149.0 PERFO_049LUP
Log Pass (up)	11-Sep-2008 17:08 000:11	626.2 - -11.9 PERFO_054LUP
Log Pass (down)	11-Sep-2008 17:53 000:30	4.4 - 3206.6 PERFO_055LDP
Log Pass (up)	11-Sep-2008 18:23 000:04	3210.9 - 3151.0 PERFO_056LUP
Log Pass (up)	11-Sep-2008 18:29 000:31	3096.9 - -0.6 PERFO_059LUP

Schlumberger

Cement Dump Pass

MAXIS Field Log

Input DLIS Files

DEFAULT	PERFO_056LUP	FN:52	PRODUCER	11-Sep-2008 18:23	3210.9 M	3151.0 M
---------	--------------	-------	----------	-------------------	----------	----------

Output DLIS Files

DEFAULT	PERFO_057PUP	FN:53	PRODUCER	11-Sep-2008 18:27	3203.0 M	3143.6 M
---------	--------------	-------	----------	-------------------	----------	----------

OP System Version: 15C0-309

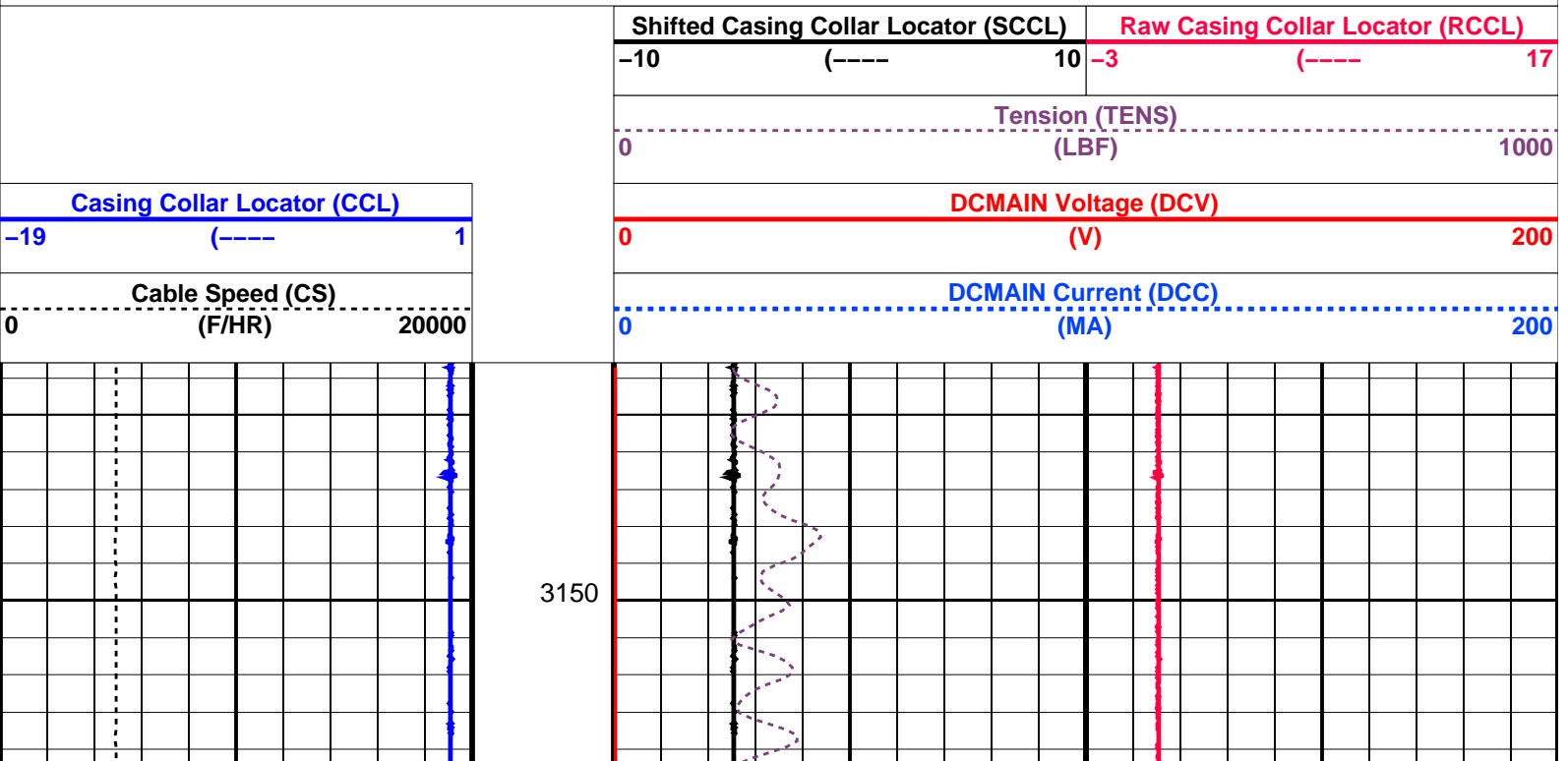
MCM

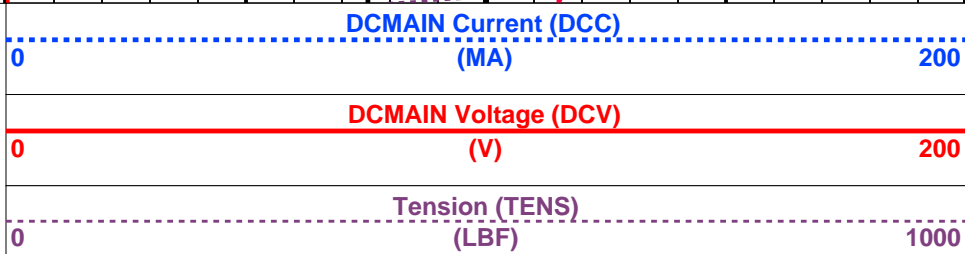
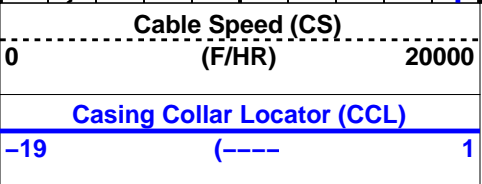
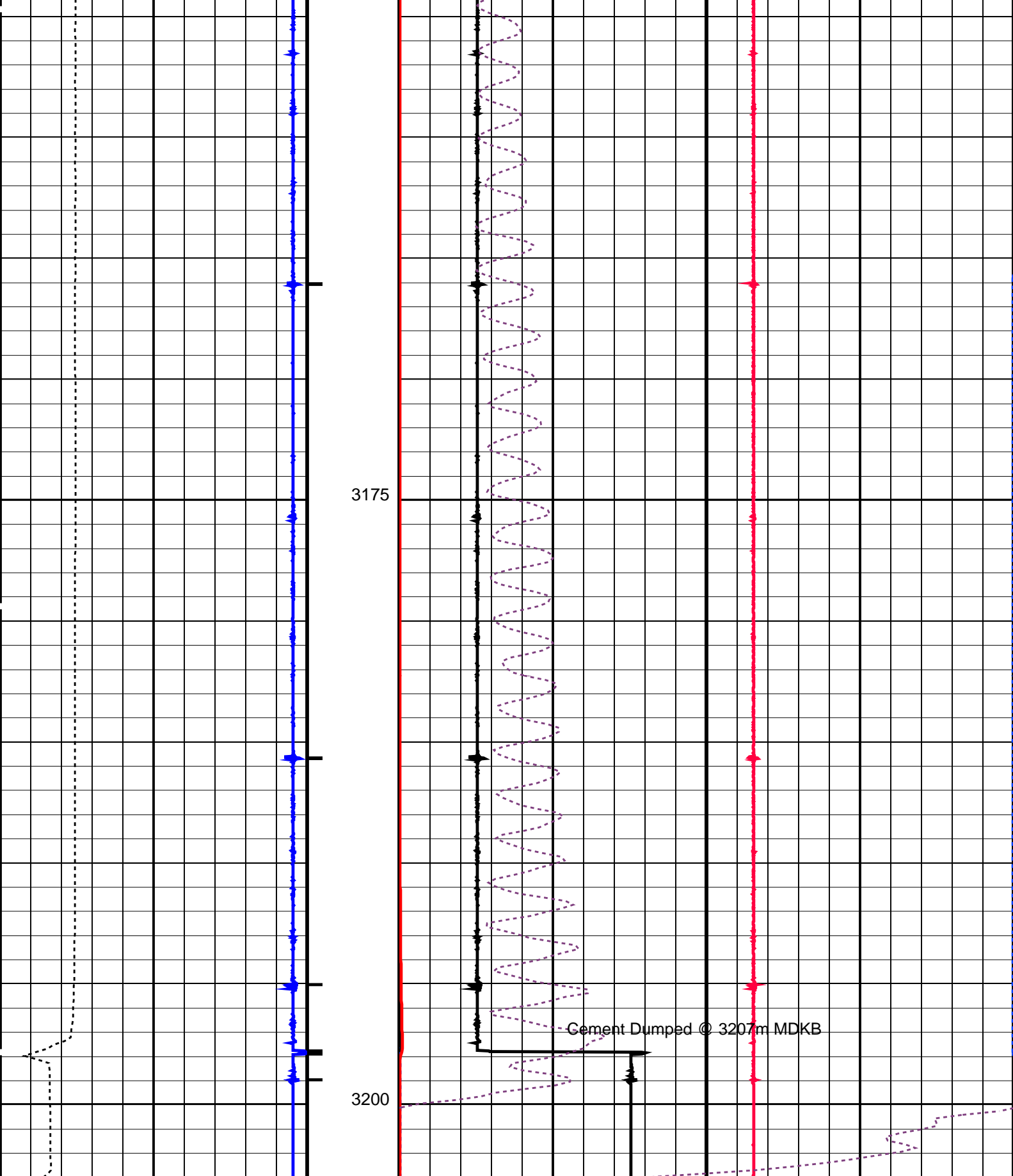
SHM_GUN	SRPC-3546-Q1_2008_OP15	CCL-L	SRPC-3546-Q1_2008_OP15
---------	------------------------	-------	------------------------

PIP SUMMARY

└─ Casing Collars

Time Mark Every 60 S





	Shifted Casing Collar Locator (SCCL)	Raw Casing Collar Locator (RCCL)
	-10 (---- 10	-3 (---- 17

PIP SUMMARY

Time Mark Every 60 S

Casing Collars

Parameters			
DLIS Name	Description	Value	
CCLD	CCL-L: Casing Collar Locator	12	IN
CCLT	CCL reset delay	0.3	V
	CCL Detection Level		
	System and Miscellaneous		
DO	Depth Offset for Playback	-8.0	M
PP	Playback Processing	NORMAL	

Format: PERFO

Vertical Scale: 1:200

Graphics File Created: 11-Sep-2008 18:27

OP System Version: 15C0-309

MCM

SHM_GUN

SRPC-3546-Q1_2008_OP15

CCL-L

SRPC-3546-Q1_2008_OP15

Input DLIS Files						
DEFAULT	PERFO_056LUP	FN:52	PRODUCER	11-Sep-2008 18:23	3210.9 M	3151.0 M
Output DLIS Files						
DEFAULT	PERFO_057PUP	FN:53	PRODUCER	11-Sep-2008 18:27		

Schlumberger

Water Dump Pass

MAXIS Field Log

Input DLIS Files						
DEFAULT	PERFO_049LUP	FN:45	PRODUCER	11-Sep-2008 16:40	3202.5 M	3149.0 M
Output DLIS Files						
DEFAULT	PERFO_050PUP	FN:46	PRODUCER	11-Sep-2008 16:46	3204.5 M	3151.5 M

OP System Version: 15C0-309

MCM

SHM_GUN

SRPC-3546-Q1_2008_OP15

CCL-L

SRPC-3546-Q1_2008_OP15

PIP SUMMARY

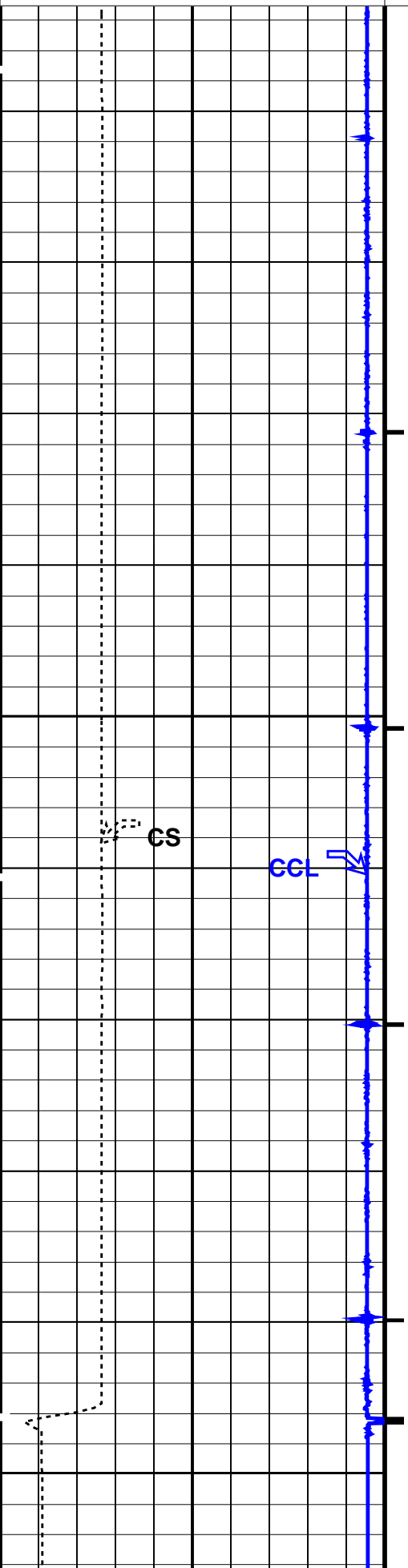
Time Mark Every 60 S

Casing Collars

	Shifted Casing Collar Locator (SCCL)	Raw Casing Collar Locator (RCCL)
	-10 (---- 10	-3 (---- 17
	Tension (TENS) (LBF)	
	0	1000
Casing Collar Locator (CCL)	DC MAIN Voltage (DCV)	

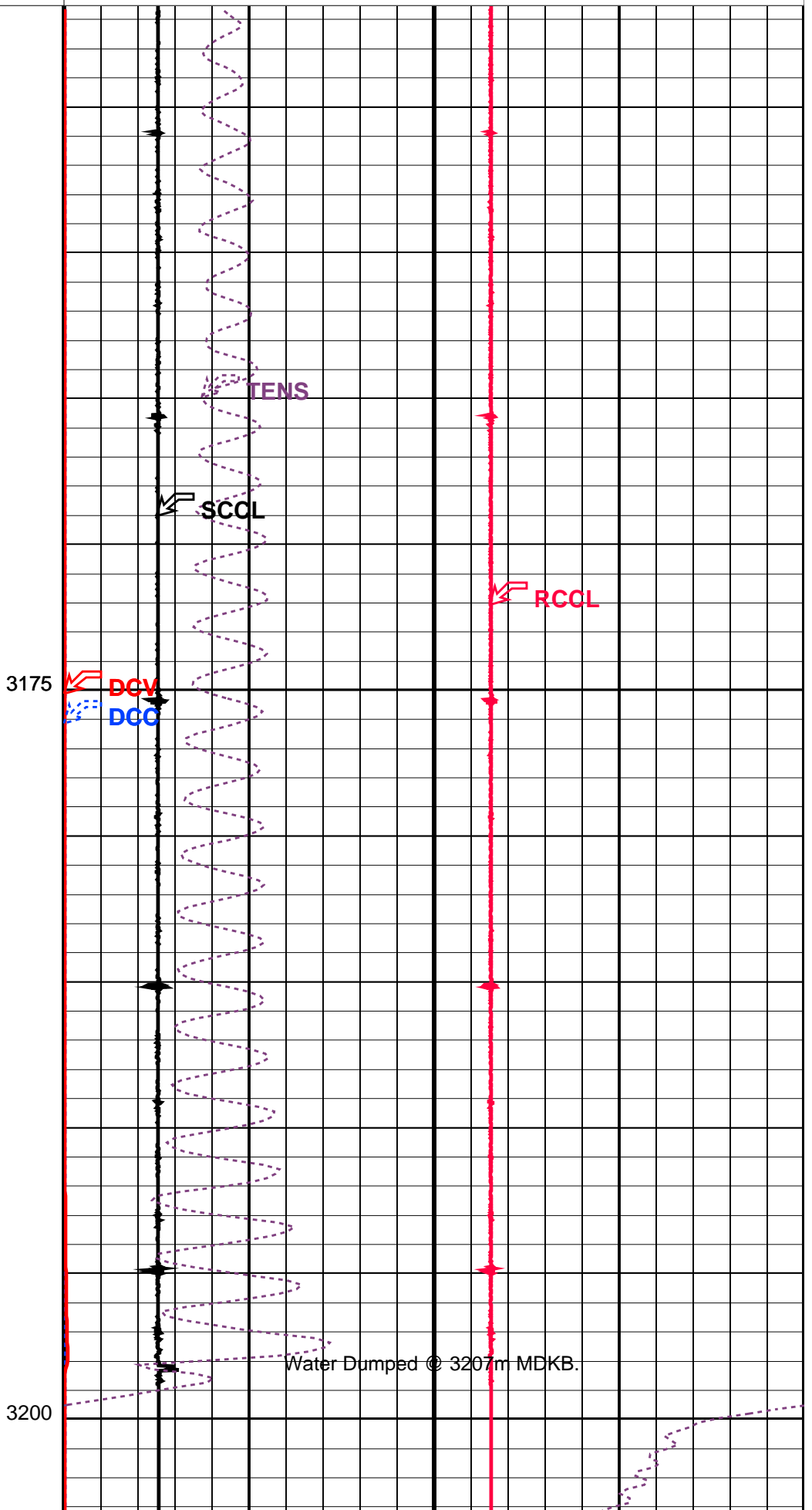
Casing Collar Locator (CCL) (----) 1

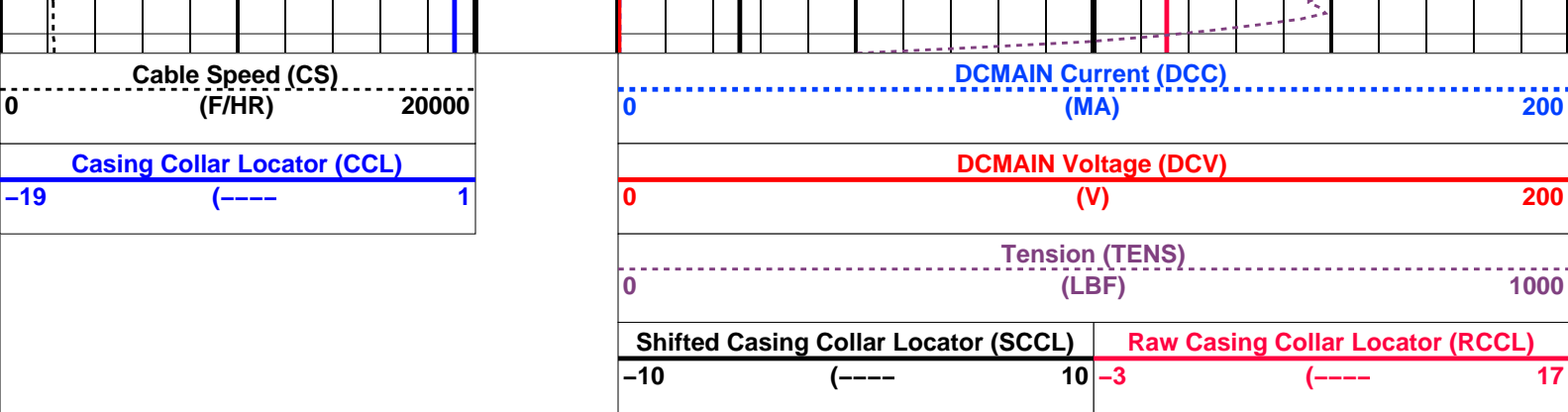
Cable Speed (CS) (F/HR) 0 20000



DCMAIN Voltage (DCV) (V) 0 200

DCMAIN Current (DCC) (MA) 0 200





PIP SUMMARY

Time Mark Every 60 S


Casing Collars

Parameters			
DLIS Name	Description	Value	
CCLD	CCL-L: Casing Collar Locator	12	IN
CCLT	CCL reset delay	0.3	V
	CCL Detection Level		
DO	System and Miscellaneous	2.0	M
PP	Depth Offset for Playback		
	Playback Processing	NORMAL	

Format: PERFO Vertical Scale: 1:200 Graphics File Created: 11-Sep-2008 16:46

OP System Version: 15C0-309			
MCM			
SHM_GUN	SRPC-3546-Q1_2008_OP15	CCL-L	SRPC-3546-Q1_2008_OP15

Input DLIS Files					
DEFAULT	PERFO_049LUP	FN:45	PRODUCER	11-Sep-2008 16:40	3202.5 M 3149.0 M
Output DLIS Files					
DEFAULT	PERFO_050PUP	FN:46	PRODUCER	11-Sep-2008 16:46	



4 1/2" Mpbt Plug
Set @ 3208m MDKB.

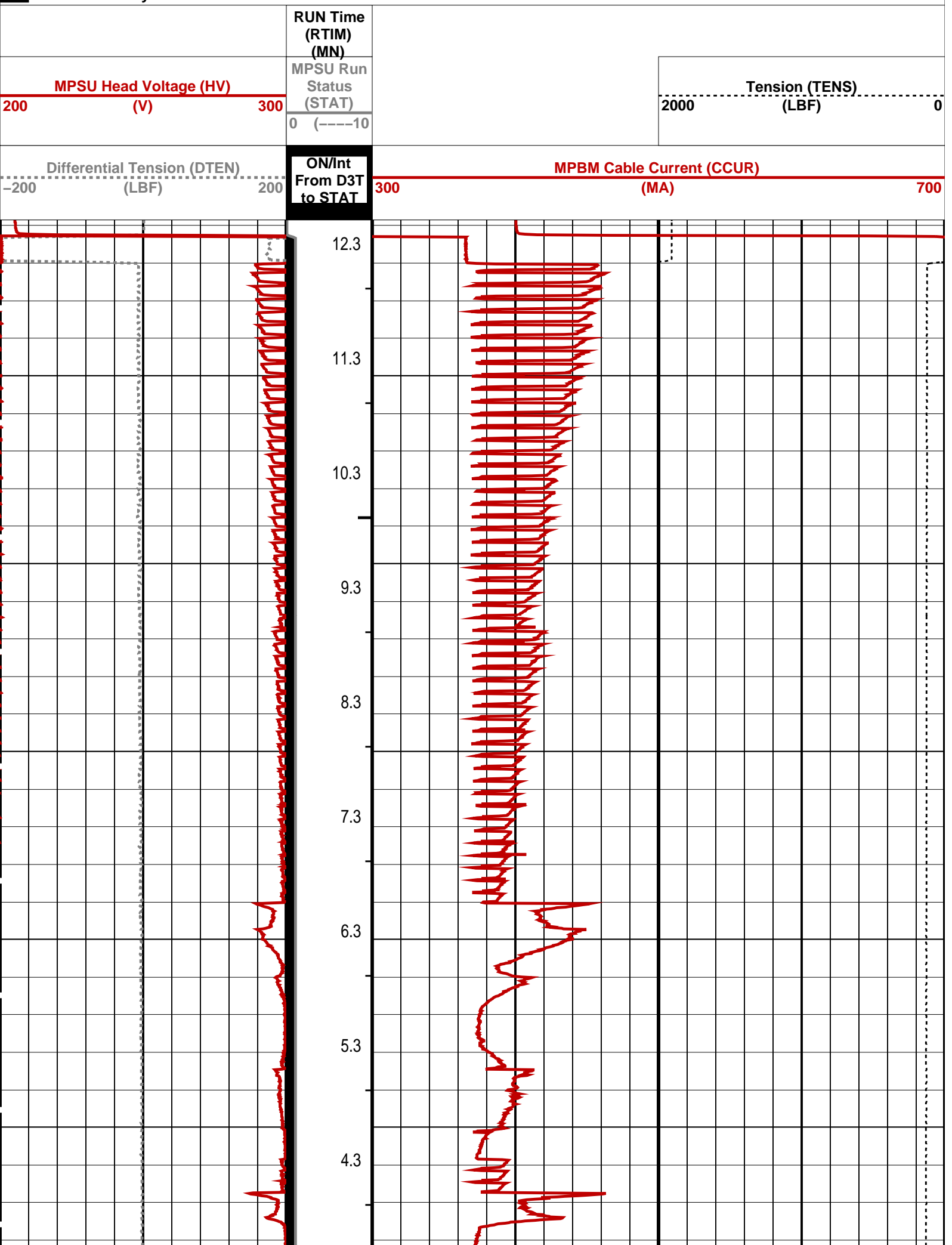
MAXIS Field Log

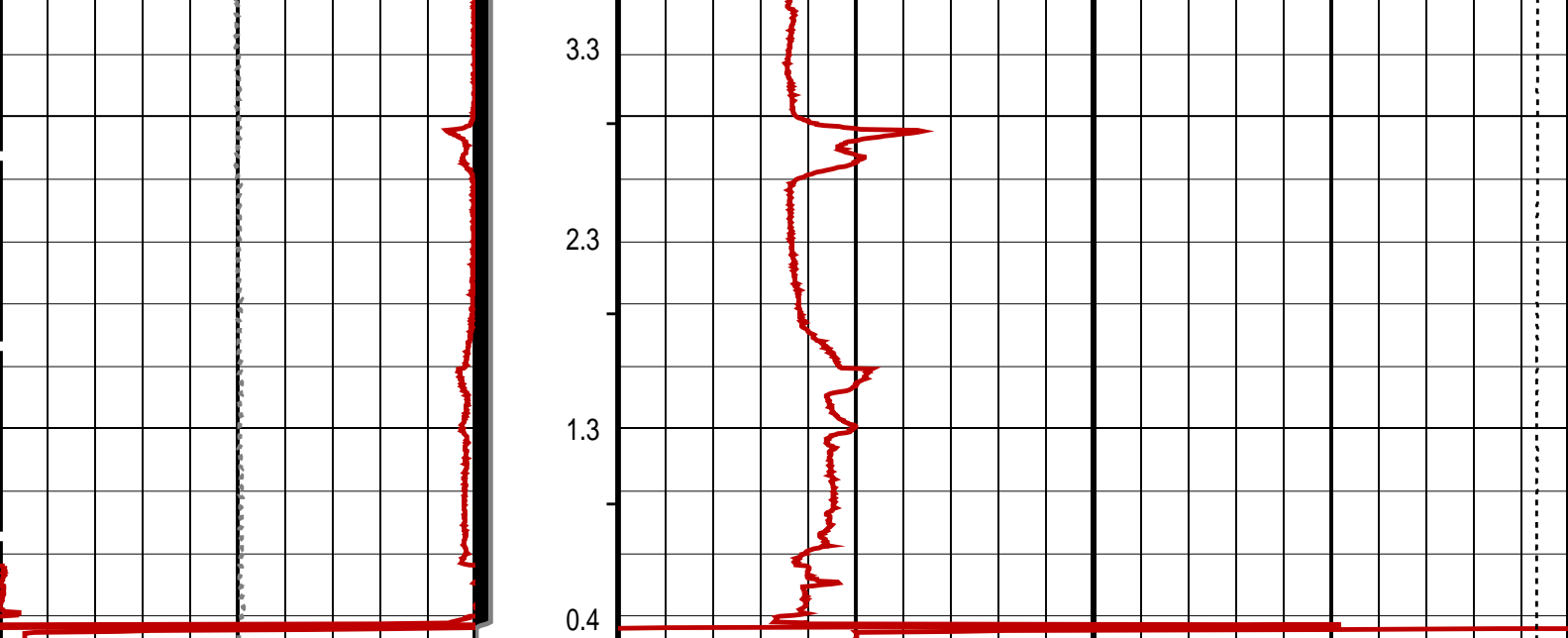
Output DLIS Files			
DEFAULT	CCL_043LUP	FN:39	PRODUCER 11-Sep-2008 14:10
OP System Version: 15C0-309			
MCM			
MPEX-FA	SRPC-3546-Q1_2008_OP15	MPSU-BA	SRPC-3546-Q1_2008_OP15
CCL-L	SRPC-3546-Q1_2008_OP15		

PIP SUMMARY

MPSU Run Time Every 1 MN

MPSU Run Time Every 10 MN





Differential Tension (DTEN) (LBF)	ON/Int From D3T to STAT	MPBM Cable Current (CCUR) (MA)
-200 200	300 700	
MPSU Head Voltage (HV) (V)	MPSU Run Status (STAT)	Tension (TENS) (LBF)
200 300	0 (----10)	2000 0
	RUN Time (RTIM) (MN)	

PIP SUMMARY

- MPSU Run Time Every 1 MN
- MPSU Run Time Every 10 MN

Time Mark Every 60 S

Parameters

DLIS Name	Description	Value
MPSU-BA: MECHANICAL PLUGBACK SETTING UNIT IPUMP	Intensifier Pump	TRUE

Format: MPBT Vertical Scale: 1:600 Graphics File Created: 11-Sep-2008 14:10

OP System Version: 15C0-309

MCM

MPEX-FA	SRPC-3546-Q1_2008_OP15	MPSU-BA	SRPC-3546-Q1_2008_OP15
CCL-L	SRPC-3546-Q1_2008_OP15		

Output DLIS Files

DEFAULT	CCL_043LUP	FN:39	PRODUCER	11-Sep-2008 14:10
---------	------------	-------	----------	-------------------



4 1/2" Mpbt Plug Correlation

Output DLIS Files

DEFAULT

CCL_042LUP

FN:38

PRODUCER

11-Sep-2008 13:58

OP System Version: 15C0-309

MCM

MPEX-FA
CCL-L

SRPC-3546-Q1_2008_OP15
SRPC-3546-Q1_2008_OP15

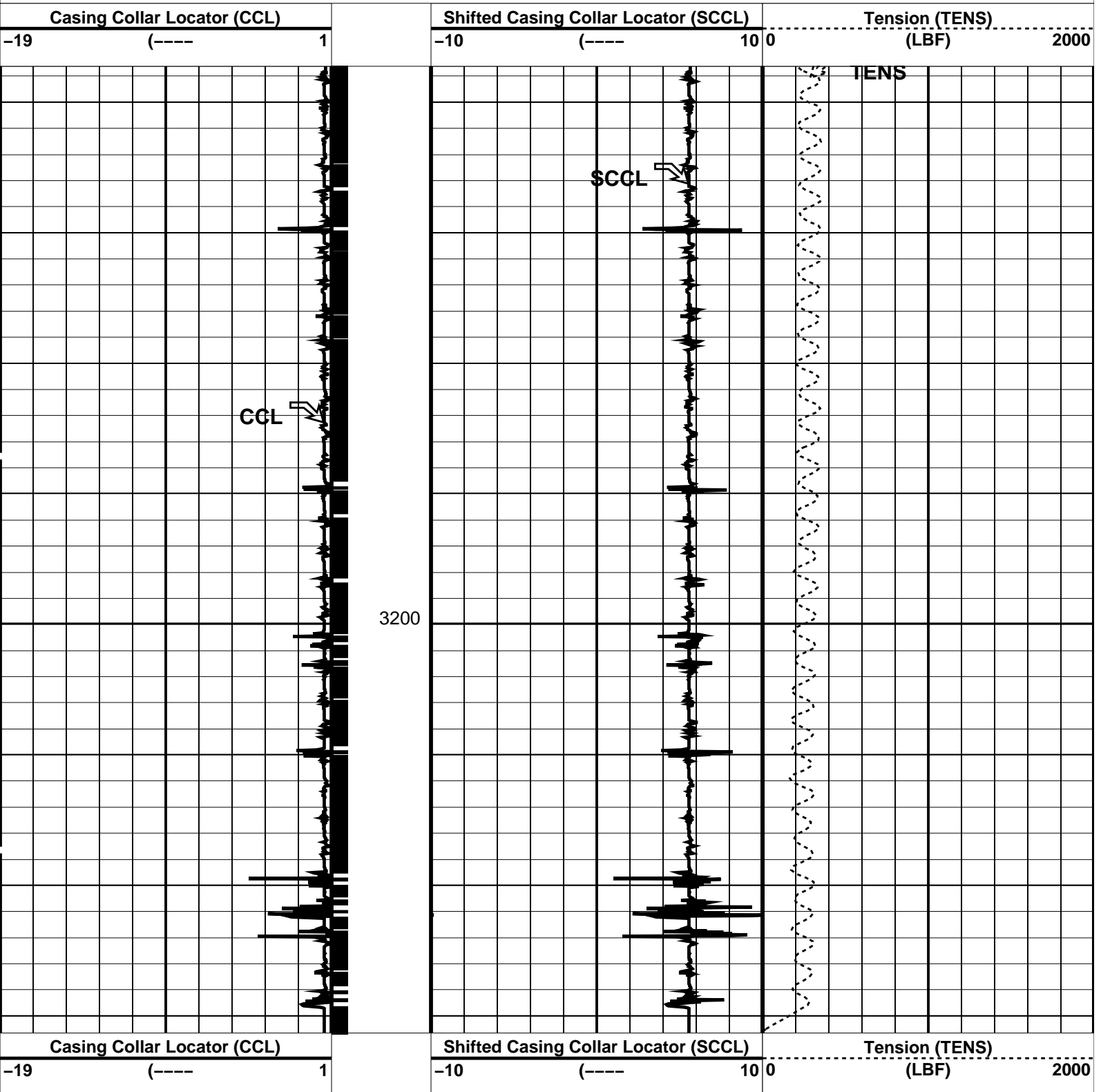
MPSU-BA

SRPC-3546-Q1_2008_OP15

PIP SUMMARY

└─ Casing Collars

Time Mark Every 60 S

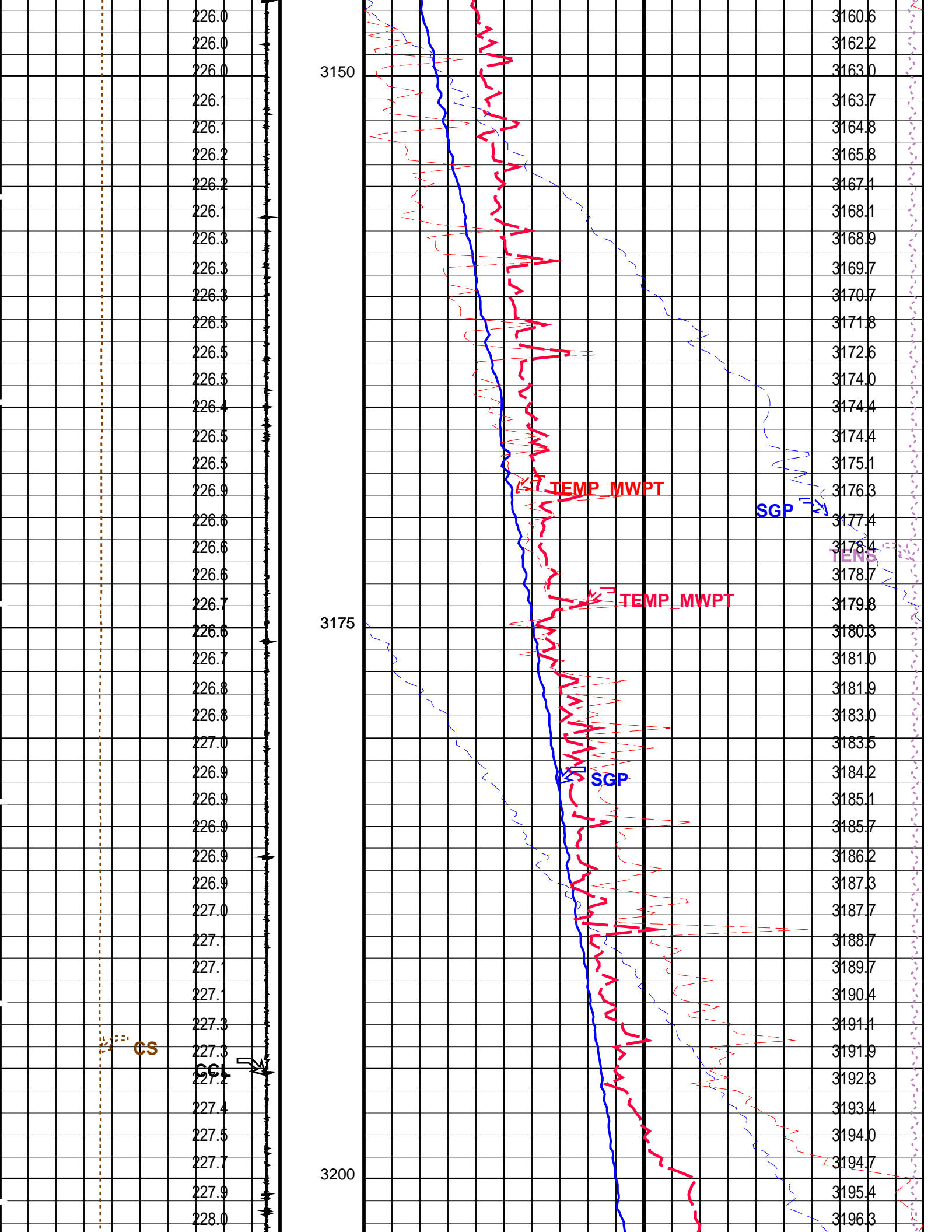


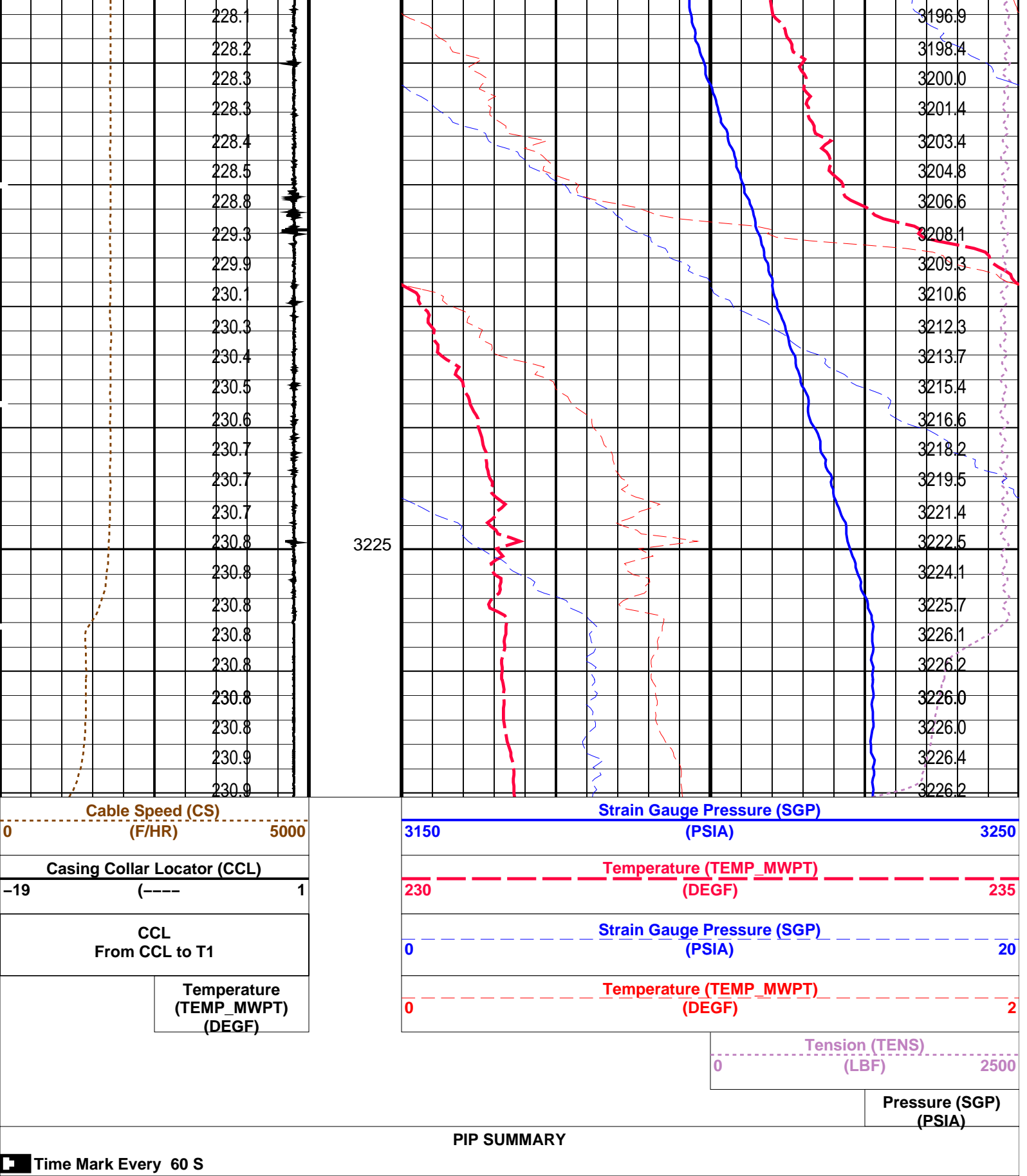
PIP SUMMARY

└─ Casing Collars

Time Mark Every 60 S

Parameters									
DLIS Name		Description					Value		
CCLD		CCL-L: Casing Collar Locator					12		
CCLT		CCL reset delay					0.3		
		CCL Detection Level					IN V		
Format: PERFO		Vertical Scale: 1:200					Graphics File Created: 11-Sep-2008 13:58		
OP System Version: 15C0-309									
MCM									
MPEX-FA		SRPC-3546-Q1_2008_OP15			MPSU-BA		SRPC-3546-Q1_2008_OP15		
CCL-L		SRPC-3546-Q1_2008_OP15							
Output DLIS Files									
DEFAULT		CCL_042LUP			FN:38		PRODUCER		11-Sep-2008 13:58
<div><div>Schlumberger</div><div>4 1/2" Dummy Plug Pass</div><div>MAXIS Field Log</div></div>									
Company: Esso Australia Pty Ltd.							Well: A-17A		
Input DLIS Files									
DEFAULT		PERFO_033LUP			FN:29		PRODUCER		11-Sep-2008 11:14 3233.8 M 3142.5 M
Output DLIS Files									
DEFAULT		PERFO_062PUP			FN:58		PRODUCER		12-Sep-2008 07:09 3235.1 M 3144.3 M
OP System Version: 15C0-309									
MCM									
MWPT-CA		SRPC-3546-Q1_2008_OP15			MWGT-AA		SRPC-3546-Q1_2008_OP15		
PIP SUMMARY									
<div><div><div>Time Mark Every 60 S</div></div></div>									
<div><div><div><div><div>Temperature (TEMP_MWPT) (DEGF)</div><div>CCL From CCL to T1</div><div>Casing Collar Locator (CCL)</div><div>Cable Speed (CS) (F/HR)</div></div><div><div>Pressure (SGP) (PSIA)</div><div>Tension (TENS) (LBF)</div><div>Temperature (TEMP_MWPT) (DEGF)</div><div>Strain Gauge Pressure (SGP) (PSIA)</div><div>Temperature (TEMP_MWPT) (DEGF)</div><div>Strain Gauge Pressure (SGP) (PSIA)</div></div></div><div><div><div><div><div></div><div></div><div></div><div></div><div></div><div></div><div></div><div></div><div></div><div></div><div></div><div></div><div></div><div></div><div></div><div></div><div></div><div></div><div></div><div></div><div></div><div></div><div></div><div></div><div></div><div></div><div></div><div></div><div></div><div></div><div></div><div></div><div></div><div></div><div></div><div></div><div></div><div></div><div></div><div></div><div></div><div></div><div></div><div></div><div></div><div></div><div></div><div></div><div></div><div></div><div></div><div></div><div></div><div></div><div></div><div></div><div></div><div></div><div></div><div></div><div></div><div></div><div></div><div></div><div></div><div></div><div></div><div></div><div></div><div></div><div></div><div></div><div></div><div></div><div></div><div></div><div></div><div></div><div></div><div></div><div></div><div></div><div></div><div></div><div></div><div></div><div></div><div></div><div></div><div></div><div></div><div></div><div></div><div></div><div></div><div></div><div></div><div></div><div></div><div></div><div></div><div></div><div></div><div></div><div></div><div></div><div></div><div></div><div></div><div></div><div></div><div></div><div></div><div></div><div></div><div></div><div></div><div></div><div></div><div></div><div></div><div></div><div></div><div></div><div></div><div></div><div></div><div></div><div></div><div></div><div></div><div></div><div></div><div></div><div></div><div></div><div></div><div></div><div></div><div></div><div></div><div></div><div></div><div></div><div></div><div></div><div></div><div></div><div></div><div></div><div></div><div></div><div></div><div></div><div></div><div></div><div></div><div></div><div></div><div></div><div></div><div></div><div></div><div></div><div></div><div></div><div></div><div></div><div></div><div></div><div></div><div></div><div></div><div></div><div></div><div></div><div></div><div></div><div></div><div></div><div></div><div></div><div></div><div></div><div></div><div></div><div></div><div></div><div></div><div></div><div></div><div></div><div></div><div></div><div></div><div></div><div></div><div></div><div></div><div></div><div></div><div></div><div></div><div></div><div></div><div></div><div></div><div></div><div></div><div></div><div></div><div></div><div></div><div></div><div></div><div></div><div></div><div></div><div></div><div></div><div></div><div></div><div></div><div></div><div></div><div></div><div></div><div></div><div></div><div></div><div></div><div></div><div></div><div></div><div></div><div></div><div></div><div></div><div></div><div></div><div></div><div></div><div></div><div></div><div></div><div></div><div></div><div></div><div></div><div></div><div></div><div></div><div></div><div></div><div></div><div></div><div></div><div></div><div></div><div></div><div></div><div></div><div></div><div></div><div></div><div></div><div></div><div></div><div></div><div></div><div></div><div></div><div></div><div></div><div></div><div></div><div></div><div></div><div></div><div></div><div></div><div></div><div></div><div></div><div></div><div></div><div></div><div></div><div></div><div></div><div></div><div></div><div></div><div></div><div></div><div></div><div></div><div></div><div></div><div></div><div></div><div></div><div></div><div></div><div></div><div></div><div></div><div></div><div></div><div></div><div></div><div></div><div></div><div></div><div></div><div></div><div></div><div></div><div></div><div></div><div></div><div></div><div></div><div></div><div></div><div></div><div></div><div></div><div></div><div></div><div></div><div></div><div></div><div></div><div></div><div></div><div></div><div></div><div></div><div></div><div></div><div></div><div></div><div></div><div></div><div></div><div></div><div></div><div></div><div></div><div></div><div></div><div></div><div></div><div></div><div></div><div></div><div></div><div></div><div></div><div></div><div></div><div></div><div></div><div></div><div></div><div></div><div></div><div></div><div></div><div></div><div></div><div></div><div></div><div></div><div></div><div></div><div></div><div></div><div></div><div></div><div></div><div></div><div></div><div></div><div></div><div></div><div></div><div></div><div></div><div></div><div></div><div></div><div></div><div></div><div></div><div></div><div></div><div></div><div></div><div></div><div></div><div></div><div></div><div></div><div></div><div></div><div></div><div></div><div></div><div></div><div></div><div></div><div></div><div></div><div></div><div></div><div></div><div></div><div></div><div></div><div></div><div></div><div></div><div></div><div></div><div></div><div></div><div></div><div></div><div></div><div></div><div></div><div></div><div></div><div></div><div></div><div></div><div></div><div></div><div></div><div></div><div></div><div></div><div></div><div></div><div></div><div></div><div></div><div></div><div></div><div></div><div></div><div></div><div></div><div></div><div></div><div></div><div></div><div></div><div></div><div></div><div></div><div></div><div></div><div></div><div></div><div></div><div></div><div></div><div></div><div></div><div></div><div></div><div></div><div></div><div></div><div></div><div></div><div></div><div></div><div></div><div></div><div></div><div></div><div></div><div></div><div></div><div></div><div></div><div></div><div></div><div></div><div></div><div></div><div></div><div></div><div></div><div></div><div></div><div></div><div></div><div></div><div></div><div></div><div></div><div></div><div></div><div></div><div></div><div></div><div></div><div></div><div></div><div></div><div></div><div></div><div></div><div></div><div></div><div></div><div></div><div></div><div></div><div></div><div></div><div></div><div></div><div></div><div></div><div></div><div></div><div></div><div></div><div></div><div></div><div></div><div></div><div></div><div></div><div></div><div></div><div></div><div></div><div></div><div></div><div></div><div></div><div></div><div></div><div></div><div></div><div></div><div></div><div></div><div></div><div></div><div></div><div></div><div></div><div></div><div></div><div></div><div></div><div></div><div></div><div></div><div></div><div></div><div></div><div></div><div></div><div></div><div></div><div></div><div></div><div></div><div></div><div></div><div></div><div></div><div></div><div></div><div></div><div></div><div></div><div></div><div></div><div></div><div></div><div></div><div></div><div></div><div></div><div></div><div></div><div></div><div></div><div></div><div></div><div></div><div></div><div></div><div></div><div></div><div></div><div></div><div></div><div></div><div></div><div></div><div></div><div></div><div></div><div></div><div></div><div></div><div></div><div></div><div></div><div></div><div></div><div></div><div></div><div></div><div></div><div></div><div></div><div></div><div></div><div></div><div></div><div></div><div></div><div></div><div></div><div></div><div></div><div></div><div></div><div></div><div></div><div></div><div></div><div></div><div></div><div></div><div></div><div></div><div></div><div></div><div></div><div></div><div></div><div></div><div></div><div></div><div></div><div></div><div></div><div></div><div></div><div></div><div></div><div></div><div></div><div></div><div></div><div></div><div></div><div></div><div></div><div></div><div></div><div></div><div></div><div></div><div></div><div></div><div></div><div></div><div></div><div></div><div></div><div></div><div></div><div></div><div></div><div></div><div></div><div></div><div></div><div></div><div></div><div></div><div></div><div></div><div></div><div></div><div></div><div></div><div></div><div></div><div></div><div></div><div></div><div></div><div></div><div></div><div></div><div></div><div></div><div></div><div></div><div></div><div></div><div></div><div></div><div></div><div></div><div></div><div></div><div></div><div></div><div></div><div></div><div></div><div></div><div></div><div></div><div></div><div></div><div></div><div></div><div></div><div></div><div></div><div></div><div></div><div></div><div></div><div></div><div></div><div></div><div></div><div></div><div></div><div></div><div></div><div></div><div></div><div></div><div></div><div></div><div></div><div></div><div></div><div></div><div></div><div></div><div></div><div></div><div></div><div></div><div></div><div></div><div></div><div></div><div></div><div></div><div></div><div></div><div></div><div></div><div></div><div></div><div></div><div></div><div></div><div></div><div></div><div></div><div></div><div></div><div></div><div></div><div></div><div></div><div></div><div></div><div></div><div></div><div></div><div></div><div></div><div></div><div></div><div></div><div></div><div></div><div></div><div></div><div></div><div></div><div></div><div></div><div></div><div></div><div></div><div></div><div></div><div></div><div></div><div></div><div></div><div></div><div></div><div></div><div></div><div></div><div></div><div></div><div></div><div></div><div></div><div></div><div></div><div></div><div></div><div></div><div></div><div></div><div></div><div></div><div></div><div></div><div></div><div></div><div></div><div></div><div></div><div></div><div></div><div></div><div></div><div></div><div></div><div></div><div></div><div></div><div></div><div></div><div></div><div></div><div></div><div></div><div></div><div></div><div></div><div></div><div></div><div></div><div></div><div></div><div></div><div></div><div></div><div></div><div></div><div></div><div></div><div></div><div></div><div></div><div></div><div></div><div></div><div></div><div></div><div></div><div></div><div></div><div></div><div></div><div></div><div></div><div></div><div></div><div></div><div></div><div></div><div></div><div></div><div></div><div></div><div></div><div></div><div></div><div></div><div></div><div></div><div></</div></div></div></div></div></div></div>									





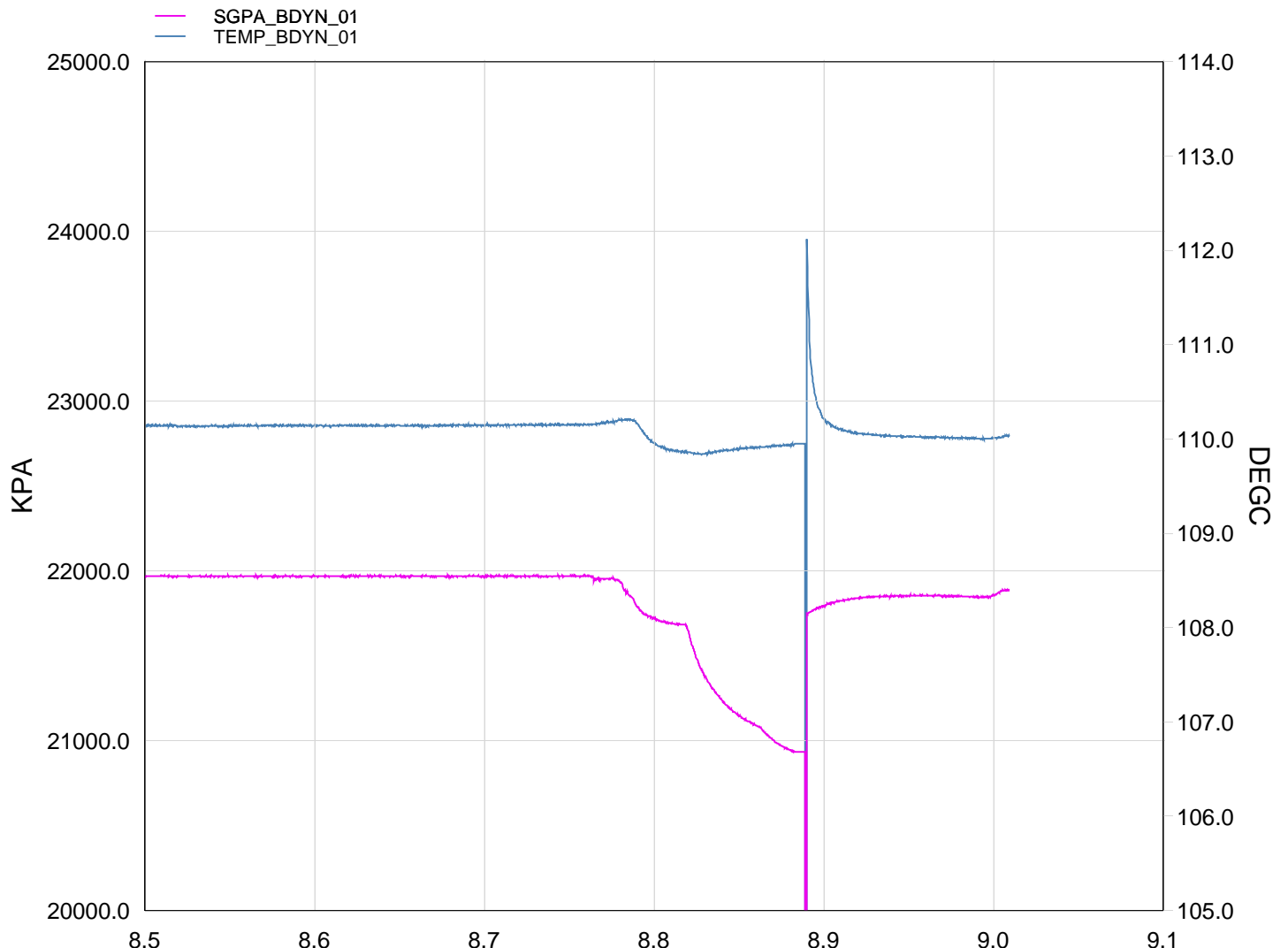
Parameters		
DLIS Name	Description	Value
MWPT-CA: MEASUREMENT WHILE PERFORATING TOOL		
DEVI_FL_CORR	Deviation Angle for Flow Line Correction	0 DEG
FLD	Flow Line Density	1 G/C3
MWPT_NULL_SOURCE	MWPT NULL Temperature Source	TEMS
MWPT_NULL_TEMP	MWPT NULL Temperature	0.0 DEGC
System and Miscellaneous		

DO PP	System and Mechanism	Depth Offset for Playback Playback Processing	1.4 M	NORMAL
Format: MWP		Vertical Scale: 1:200	Graphics File Created: 12-Sep-2008 07:09	
OP System Version: 15C0-309				
MCM				
MWPT-CA	SRPC-3546-Q1_2008_OP15	MWGT-AA	SRPC-3546-Q1_2008_OP15	
Input DLIS Files				
DEFAULT	PERFO_033LUP	FN:29	PRODUCER	11-Sep-2008 11:14 3233.8 M 3142.5 M
Output DLIS Files				
DEFAULT	PERFO_062PUP	FN:58	PRODUCER	12-Sep-2008 07:09

Schlumberger

GUN # 1
3200.7m to 3201.7m MDKB

MAXIS Field Log



T (hr)

TIME	DEGF	PSIA
5580.0	230.05	3174.241
5520.0	230.01	3168.690
5460.0	230.02	3169.660
5400.0	230.04	3169.916
5340.0	230.07	3169.296
5280.0	230.10	3168.029
5220.0	230.26	3163.792
5160.0	229.90	3036.253
5100.0	229.86	3044.435
5040.0	229.83	3062.497
4980.0	229.76	3083.825
4920.0	229.74	3130.986
4860.0	229.84	3147.757
4800.0	230.34	3164.220
4740.0	230.32	3184.194
4680.0	230.28	3186.201
4620.0	230.27	3186.216
4560.0	230.27	3186.112
4500.0	230.27	3186.318
4440.0	230.27	3186.681
4380.0	230.27	3186.250
4320.0	230.26	3186.438
4260.0	230.26	3186.319
4200.0	230.26	3186.645
4140.0	230.26	3186.452
4080.0	230.26	3186.445
4020.0	230.26	3186.383
3960.0	230.26	3186.583
3900.0	230.25	3186.256
3840.0	230.24	3186.426
3780.0	230.26	3186.371

Schlumberger

Shooting Pass

MAXIS Field Log

Company: Esso Australia Pty Ltd.

Well: A-17A

Output DLIS Files

DEFAULT PERFO_029LUP FN:25 PRODUCER 11-Sep-2008 08:26 3212.7 M 3174.2 M

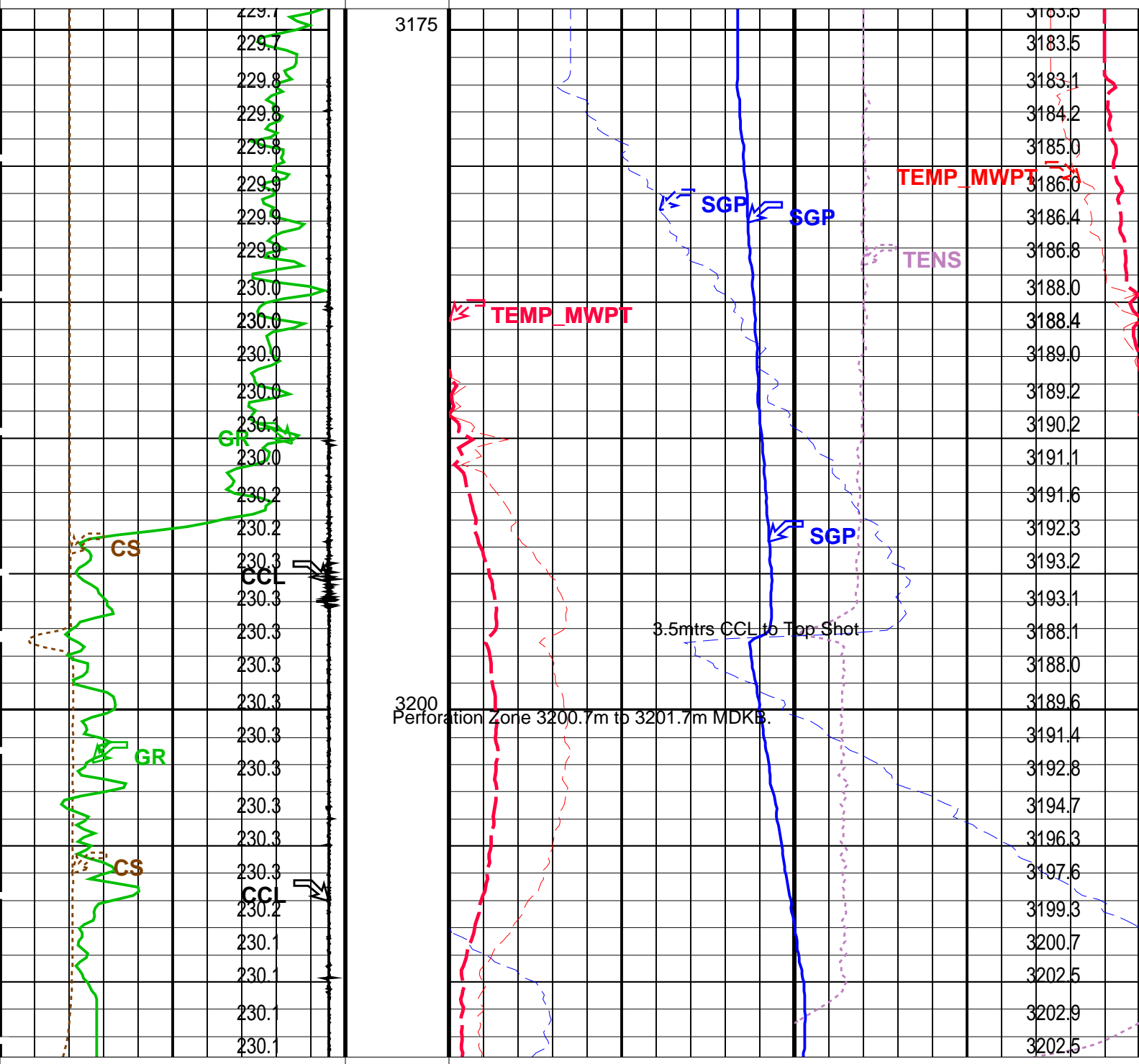
OP System Version: 15C0-309

MCM

PIP SUMMARY

Time Mark Every 60 S

Temperature (TEMP_MWPT) (DEGF)		Pressure (SGP) (PSIA)	
CCL From CCL to T1		Tension (TENS) (LBF)	
Gamma Ray (GR) (GAPI)		0	2000
Casing Collar Locator (CCL)		Temperature (TEMP_MWPT) (DEGF)	
-19	1	0	2
Cable Speed (CS) (F/HR)		Strain Gauge Pressure (SGP) (PSIA)	
0	5000	0	20
		Temperature (TEMP_MWPT) (DEGF)	
		225	230
		Strain Gauge Pressure (SGP) (PSIA)	
		3100	3300



Cable Speed (CS) (F/HR)		5000	Strain Gauge Pressure (SGP) (PSIA)		3300
Casing Collar Locator (CCL) -19 (---- 1			Temperature (TEMP_MWPT) (DEGF) 225 230		
Gamma Ray (GR) (GAPI)		150	Strain Gauge Pressure (SGP) (PSIA)		20
CCL From CCL to T1		Temperature (TEMP_MWPT) (DEGF)	Temperature (TEMP_MWPT) (DEGF) 0 2		
			Tension (TENS) (LBF)		2000
					Pressure (SGP) (PSIA)


PIP SUMMARY					
Time Mark Every 60 S					

Parameters			
DLIS Name	Description	Value	
MWPT-CA: MEASUREMENT WHILE PERFORATING TOOL			
DEVI_FL_CORR	Deviation Angle for Flow Line Correction	0	DEG
FLD	Flow Line Density	1	G/C3
MWPT_NULL_SOURCE	MWPT NULL Temperature Source	TEMS	
MWPT_NULL_TEMP	MWPT NULL Temperature	0.0	DEGC

Format: MWP	Vertical Scale: 1:200	Graphics File Created: 11-Sep-2008 08:26			
-------------	-----------------------	--	--	--	--

OP System Version: 15C0-309			
MCM			
MWP_GUN	SRPC-3546-Q1_2008_OP15	MWPT-CA	SRPC-3546-Q1_2008_OP15
MWGT-AA	SRPC-3546-Q1_2008_OP15		

Output DLIS Files					
DEFAULT	PERFO_029LUP	FN:25	PRODUCER	11-Sep-2008 08:26	



Correlation Pass

MAXIS Field Log

Company: Esso Australia Pty Ltd.				Well: A-17A	
----------------------------------	--	--	--	-------------	--

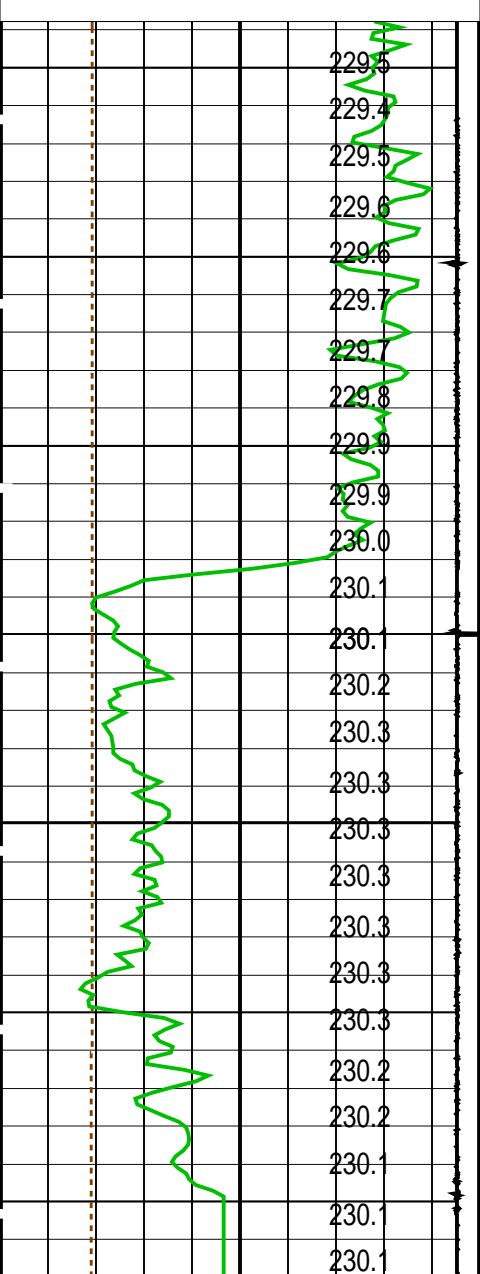
Output DLIS Files					
DEFAULT	PERFO_028LUP	FN:24	PRODUCER	11-Sep-2008 08:13	3212.0 M 3178.8 M

OP System Version: 15C0-309			
MCM			
MWP_GUN	SRPC-3546-Q1_2008_OP15	MWPT-CA	SRPC-3546-Q1_2008_OP15
MWGT-AA	SRPC-3546-Q1_2008_OP15		

PIP SUMMARY					
Time Mark Every 60 S					

				Pressure (SGP) (PSIA)	
--	--	--	--	--------------------------	--

Temperature (TEMP_MWPT) (DEGF)		0	Tension (TENS) (LBF)	2000
CCL From CCL to T1				
Gamma Ray (GR) (GAPI)		0		150
Casing Collar Locator (CCL)				
-19 (----				1
Cable Speed (CS) (F/HR)		0		5000



Cable Speed (CS) (F/HR)		0		5000
Casing Collar Locator (CCL)				
-19 (----				1
Gamma Ray (GR) (GAPI)		0		150
CCL From CCL to T1				

Temperature (TEMP_MWPT) (DEGF)		0		2
Strain Gauge Pressure (SGP) (PSIA)		0		20
Temperature (TEMP_MWPT) (DEGF)		225		230
Strain Gauge Pressure (SGP) (PSIA)		3100		3300



Strain Gauge Pressure (SGP) (PSIA)		3100		3300
Temperature (TEMP_MWPT) (DEGF)		225		230
Strain Gauge Pressure (SGP) (PSIA)		0		20
Temperature (TEMP_MWPT) (DEGF)		0		2

Temperature (TEMP_MWPT) (DEGF)				
--------------------------------------	--	--	--	--

Tension (TENS) (LBF)				
-------------------------	--	--	--	--

(TEMP MWPT) (DEGF)		0	(LBF)	2000
			Pressure (SGP) (PSIA)	
PIP SUMMARY				
Time Mark Every 60 S				
Parameters				
DLIS Name		Description		Value
MWPT-CA: MEASUREMENT WHILE PERFORATING TOOL				
DEVI_FL_CORR		Deviation Angle for Flow Line Correction		0 DEG
FLD		Flow Line Density		1 G/C3
MWPT_NULL_SOURCE		MWPT NULL Temperature Source		TEMS
MWPT_NULL_TEMP		MWPT NULL Temperature		0.0 DEGC
Format: MWP		Vertical Scale: 1:200		Graphics File Created: 11-Sep-2008 08:13

OP System Version: 15C0-309			
MCM			
MWP_GUN	SRPC-3546-Q1_2008_OP15	MWPT-CA	SRPC-3546-Q1_2008_OP15
MWGT-AA	SRPC-3546-Q1_2008_OP15		
Output DLIS Files			
DEFAULT	PERFO_028LUP	FN:24	PRODUCER 11-Sep-2008 08:13

Company:	Esso Australia Pty Ltd.	Schlumberger
Well:	A-17A	
Field:	Flounder	
Rig:	Crane / Prod4	
Country:	Australia	
2-1/8" Phased Powerjet MWPT Perforation Record 4 1/2" Posiset Plug Setting Record		