

Company: Esso Australia Pty Ltd

Well: SNA M33a

Field: Bass Strait

Rig: Rig 175

Country: Australia

Depth Determination MAXR set on Drill pipe 12-08-2008	
LOCATION	
Gippsland Basin Bass Strait	Elev.: K.B. 41.7 m G.L. -65 m D.F. 41.7 m
Permanent Datum: _____ Log Measured From: _____ Drilling Measured From: _____	Mean Sea Level _____ Drill Floor _____ Drill Floor _____ Elev.: 0 m _____ 41.7 m above Perm. Datum
State: Victoria	Max. Well Deviation 85 deg Longitude 148.1°31.298"E Latitude 38.1°1'37.840"S
Logging Date	12-Aug-2008
Run Number	1
Depth Driller	6156 m
Schlumberger Depth	5652 m
Bottom Log Interval	5650 m
Top Log Interval	5575 m
Casing Fluid Type	Brine & Radia Green
Salinity	
Density	8.55 g/cm3
Fluid Level	0 m
BIT/CASING/TUBING STRING	
Bit Size	8.500 in
From	5173 m
To	6156 m
Casing/Tubing Size	7.000 in
Weight	26 lbn/ft
Grade	L-80
From	5173 m
To	6156 m
Maximum Recorded Temperatures	
Logger On Bottom	12-Aug-2008 Time 8:30
Unit Number	3829 Location AUSL
Recorded By	B.Donahoe & O.Darby
Witnessed By	Richard.M & Mark.C

PVT DATA		Run 1	
Oil Density			
Water Salinity			
Gas Gravity			
Bo			
Bw			
1/Bg			
Bubble Point Pressure			
Bubble Point Temperature			
Solution GOR			
Maximum Deviation		85 deg	
CEMENTING DATA			
Primary/Squeeze		Primary	
Casing String No			
Lead Cement Type			
Volume			
Density			
Water Loss			
Additives			
Tail Cement Type			
Volume			
Density			
Water Loss			
Additives			
Expected Cement Top			
Logging Date			
Run Number			
Depth Driller			
Schlumberger Depth			
Bottom Log Interval			
Top Log Interval			
Casing Fluid Type			
Salinity			
Density			
Fluid Level			
BIT/CASING/TUBING STRING			
Bit Size			
From			
To			
Casing/Tubing Size			
Weight			
Grade			
From			
To			
Maximum Recorded Temperatures			
Logger On Bottom	Time		
Unit Number	Location		
Recorded By			
Witnessed By			

## DEPTH SUMMARY LISTING

Date Created: 12-AUG-2008 19:23:57

### Depth System Equipment

Depth Measuring Device		Tension Device		Logging Cable	
Type:	IDW-H	Type:	CMTD-B/A	Type:	7-46ZV-XS
Serial Number:	797	Serial Number:	2268	Serial Number:	708145
Calibration Date:	04-Dec-2007	Calibration Date:	13-Feb-2008	Length:	7299.96 M
Calibrator Serial Number:	1009	Calibrator Serial Number:	1052	Conveyance Method: Wireline Rig Type: Offshore_Fixed	
Calibration Cable Type:	7-46ZV-XS	Calibration Gain:	1.19		
Wheel Correction 1:	-6	Calibration Offset:	-813.00		
Wheel Correction 2:	-3				

### Depth Control Parameters

Log Sequence:	Subsequent Log In the Well
Reference Log Name:	Esso Petrophysical Analysis Log

### Depth Control Remarks

1. Used IDW as primary depth control
2. Used Z-Chart as secondary depth control

#### DISCLAIMER

THE USE OF AND RELIANCE UPON THIS RECORDED-DATA BY THE HEREIN NAMED COMPANY (AND ANY OF ITS AFFILIATES, PARTNERS, REPRESENTATIVES, AGENTS, CONSULTANTS AND EMPLOYEES) IS SUBJECT TO THE TERMS AND CONDITIONS AGREED UPON BETWEEN SCHLUMBERGER AND THE COMPANY, INCLUDING: (a) RESTRICTIONS ON USE OF THE RECORDED-DATA; (b) DISCLAIMERS AND WAIVERS OF WARRANTIES AND REPRESENTATIONS REGARDING COMPANY'S USE OF AND RELIANCE UPON THE RECORDED-DATA; AND (c) CUSTOMER'S FULL AND SOLE RESPONSIBILITY FOR ANY INFERENCE DRAWN OR DECISION MADE IN CONNECTION WITH THE USE OF THIS RECORDED-DATA.

OTHER SERVICES1
OS1: none

REMARKS: RUN NUMBER 1
Correlated to Esso Petrophysical Analysis Log provided by cleint

Rig up & RIH with a toolstring incorporating GR/CCL correlate to formation, log pip tag installed one stand above the baker model J setting tool ,advise driller of depth correction needed for drill pipe.
---

Bump down operation was utilized to assist the tool going down at high deviation
--

ump down operation was utilized to assist the tool going down at high deviation

Day Crew: Rick Murray, Peter Lawrence  
Night Crew: Gary Martin, Matt Matthes

RUN 1					
SERVICE ORDER #:		AUSL08503219			
PROGRAM VERSION:		15C0-309			
FLUID LEVEL:		0 m			
LOGGED INTERVAL	START	STOP	LOGGED INTERVAL	START	STOP

EQUIPMENT DESCRIPTION

RUN 1		RUN 2	
SURFACE EQUIPMENT			
WITM (SHM)			
DOWNHOLE EQUIPMENT			

\_\_\_ TOOL ZERO

1.63

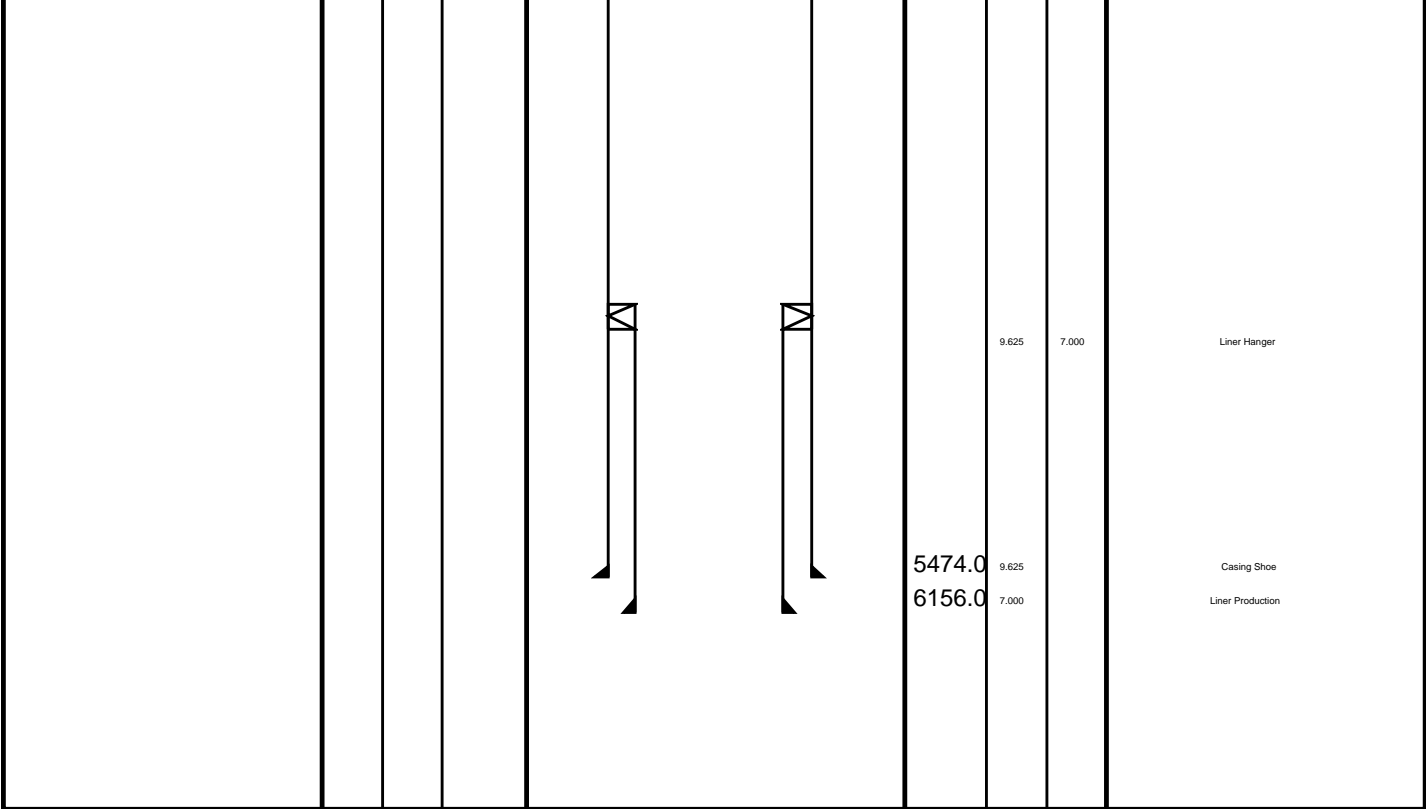
0.00

MAXIMUM STRING DIAMETER 2.13 IN  
MEASUREMENTS RELATIVE TO TOOL ZERO  
ALL LENGTHS IN METERS

Client: Esso Australia Pty Ltd  
Well: Snapper M33a  
Field:  
State: Victoria  
Country: Australia

Rig Name: Nabors Rig 175  
Reference Datum:  
Elevation:

[illegible]



# Job Events Summary

MAXIS Field Log

## Schlumberger Job Event Summary

Time	Elapsed Time	Depth (M)	File
Simulated Log	11-Aug-2008 2:36	000:02	PERFO_017LUP
OP Checked toolstring			
Log Pass (down)	12-Aug-2008 3:58	002:21	1043.6 – 3231.2 PERFO_039LDP
RIH			
Log Pass (up)	12-Aug-2008 9:17	000:08	5652.4 – 5573.4 PERFO_057LUP
DP pip tag correlation			
Log Pass (up)	12-Aug-2008 9:34	000:11	5150.2 – 4909.4 PERFO_058LUP
9 5/8" PIP correlation pass			
Rig Down Completed	12-Aug-2008 11:00		

Schlumberger

# MAXR on drill pipe 9 5/8" Pip tags

MAXIS Field Log

Company: Esso Australia Pty Ltd

Well: Snapper M33a

## Output DLIS Files

DEFAULT PERFO\_058LUP FN:57 PRODUCER 12-Aug-2008 09:34 5150.2 M 4909.4 M

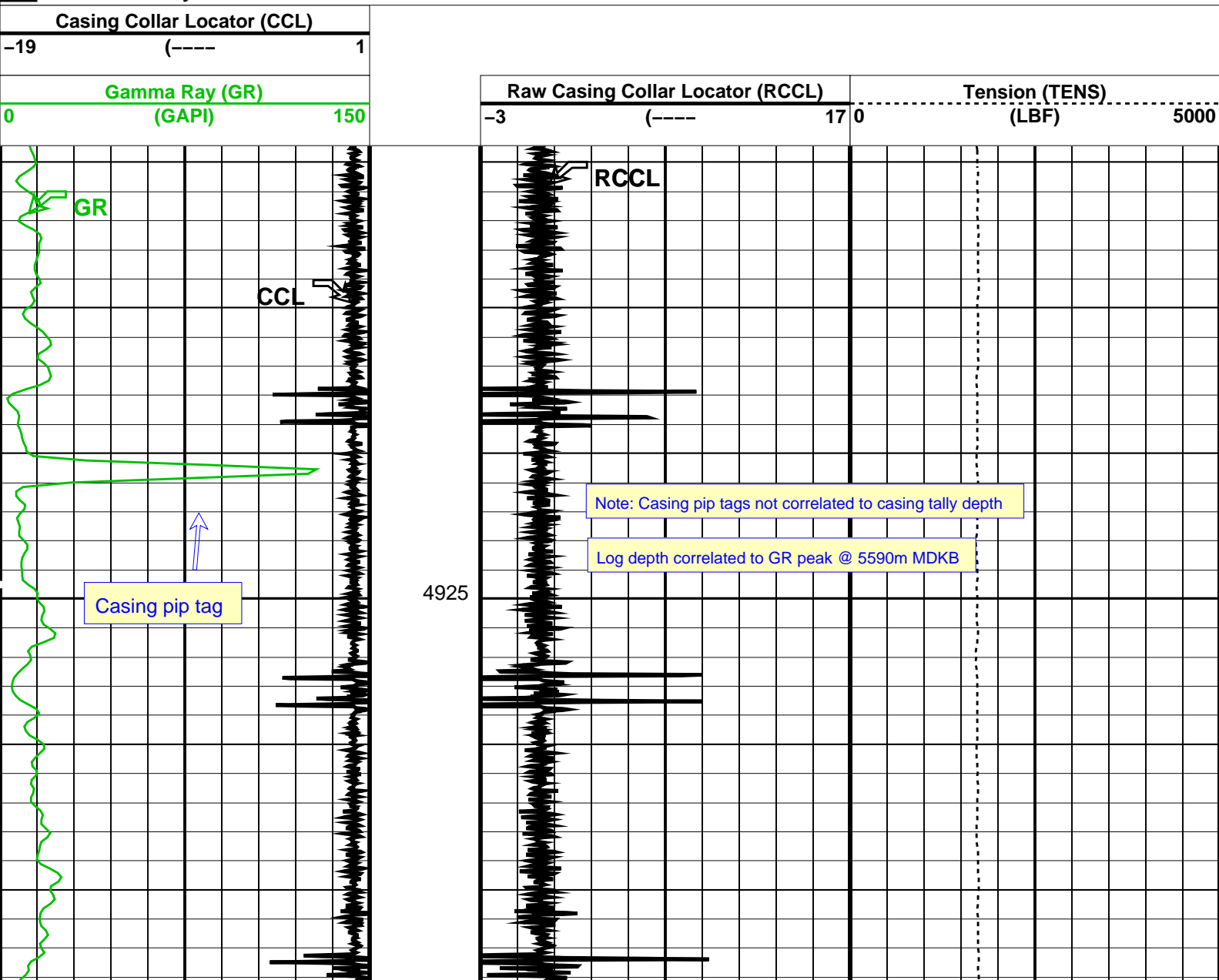
## OP System Version: 15C0-309

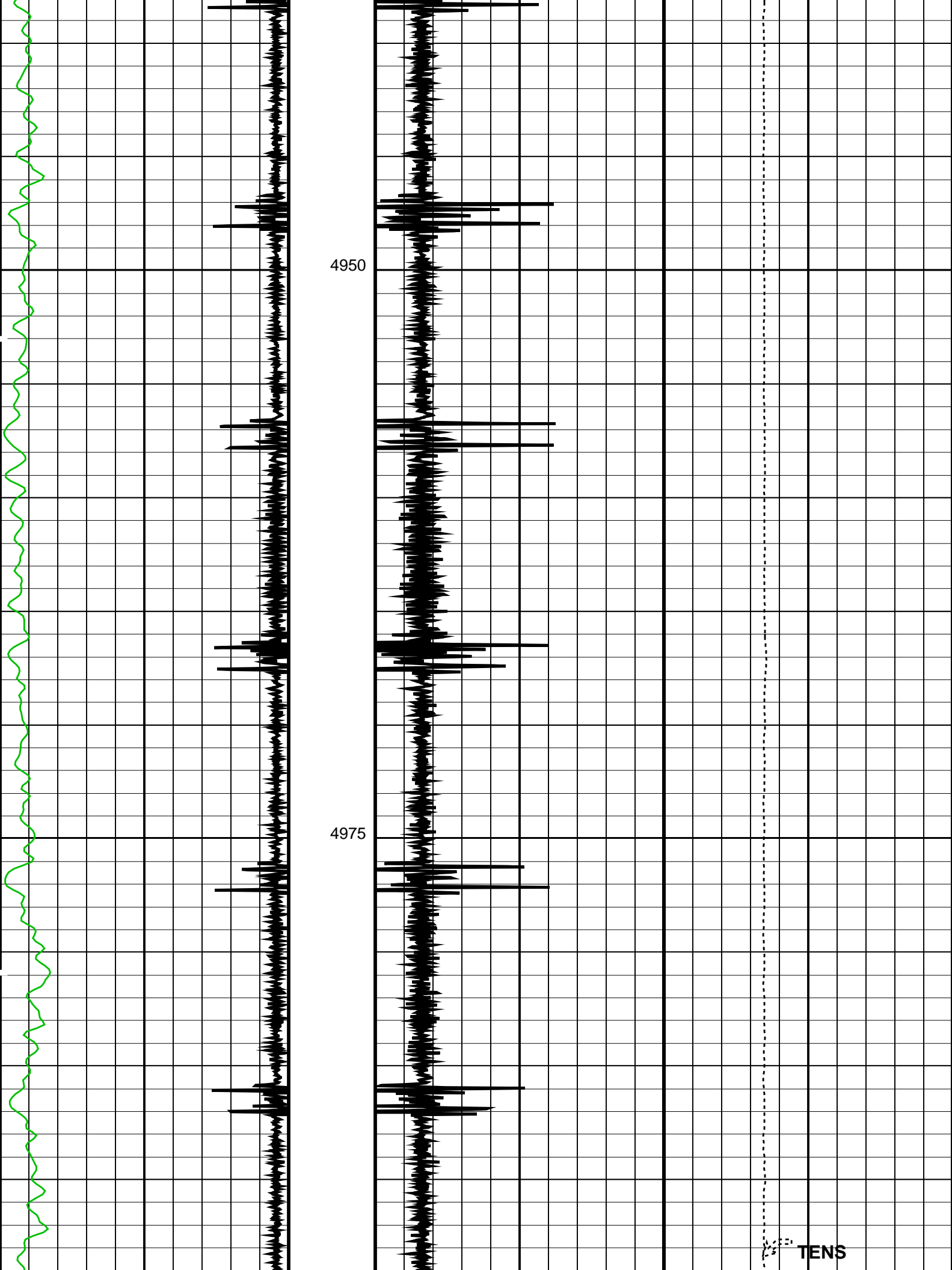
MCM

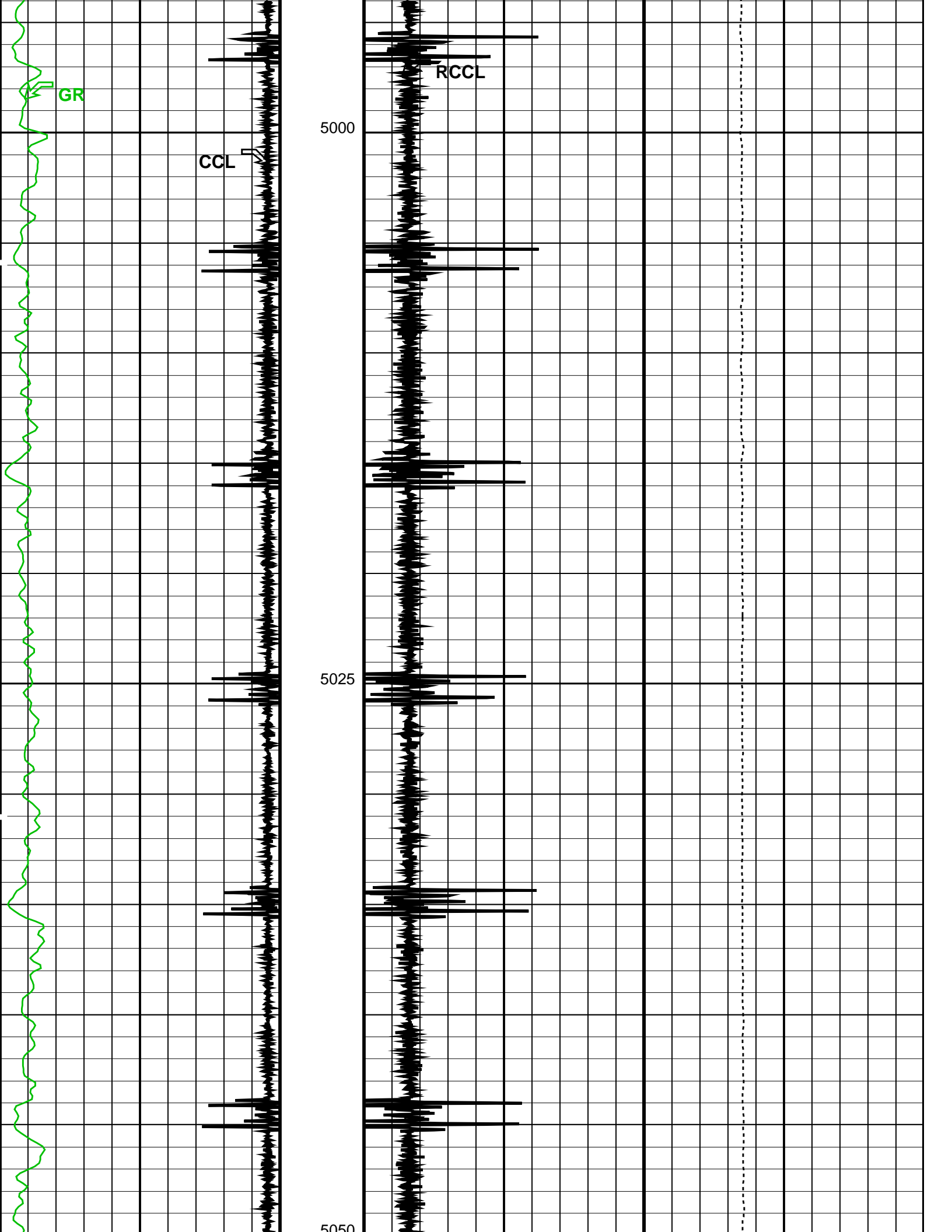
SHM\_GUN SRPC-3582-Q1\_2008\_OP15 UPCT-A 15C0-309

### PIP SUMMARY

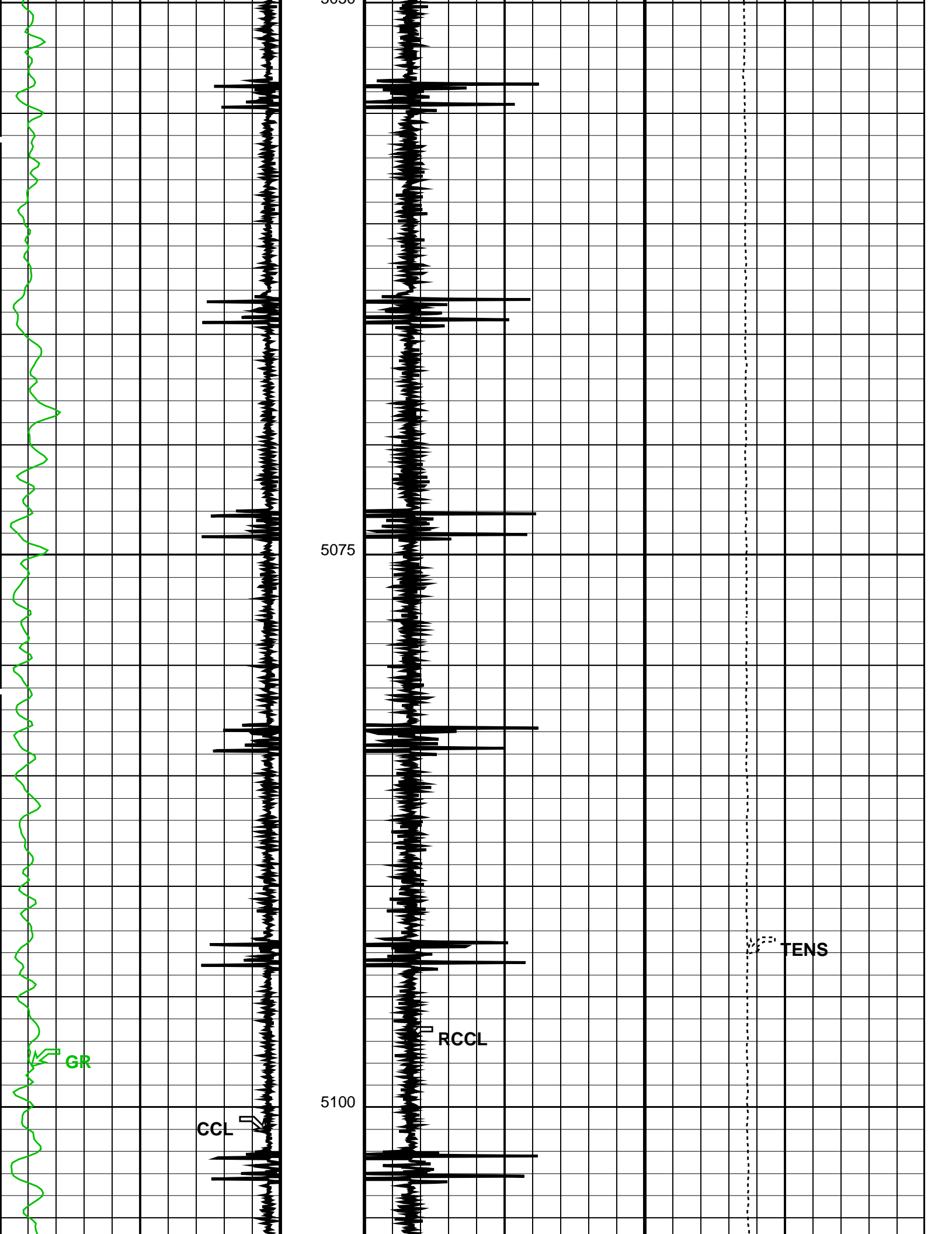
Time Mark Every 60 S

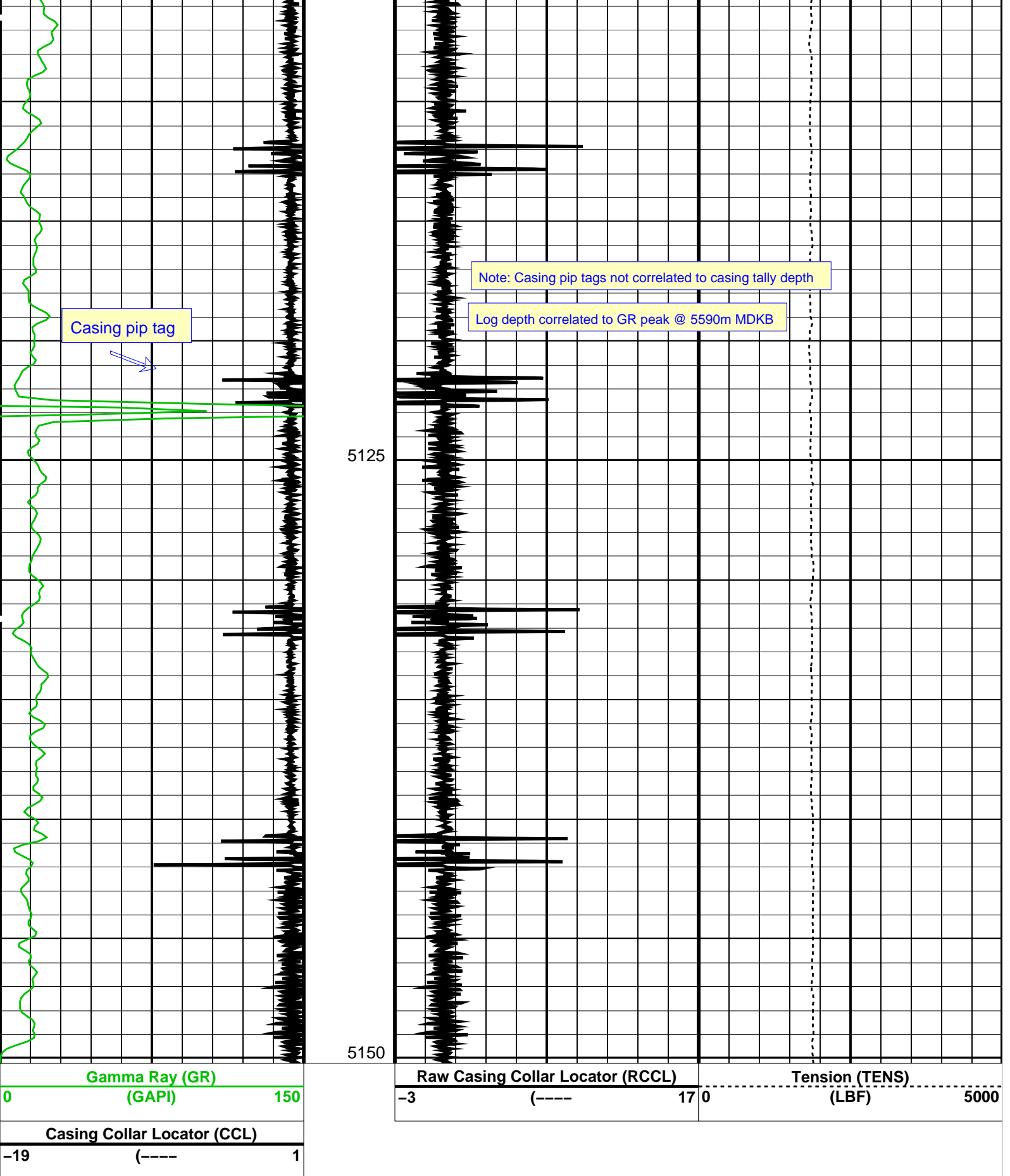












PIP SUMMARY

Time Mark Every 60 S

Format: CCLLog Vertical Scale: 1:200

Graphics File Created: 12-Aug-2008 09:34

OP System Version: 15C0-309  
MCM

SHM GUN

SRPC-3582-Q1 2008 OP15

UPCT-A

15C0-309

## Output DLIS Files

DEFAULT

PERFO\_058LUP

FN:57

PRODUCER

12-Aug-2008 09:34

**Schlumberger**

## MAXR on drill pipe Correlation pass

MAXIS Field Log

Company: Esso Australia Pty Ltd

Well: Snapper M33a

## Output DLIS Files

DEFAULT

PERFO\_057LUP

FN:56

PRODUCER

12-Aug-2008 09:17

## OP System Version: 15C0-309

MCM

SHM\_GUN

SRPC-3582-Q1\_2008\_OP15

UPCT-A

15C0-309

### PIP SUMMARY

☒ Time Mark Every 60 S

#### Casing Collar Locator (CCL)

-19 (----) 1

Gamma Ray (GR)  
(GAPI)

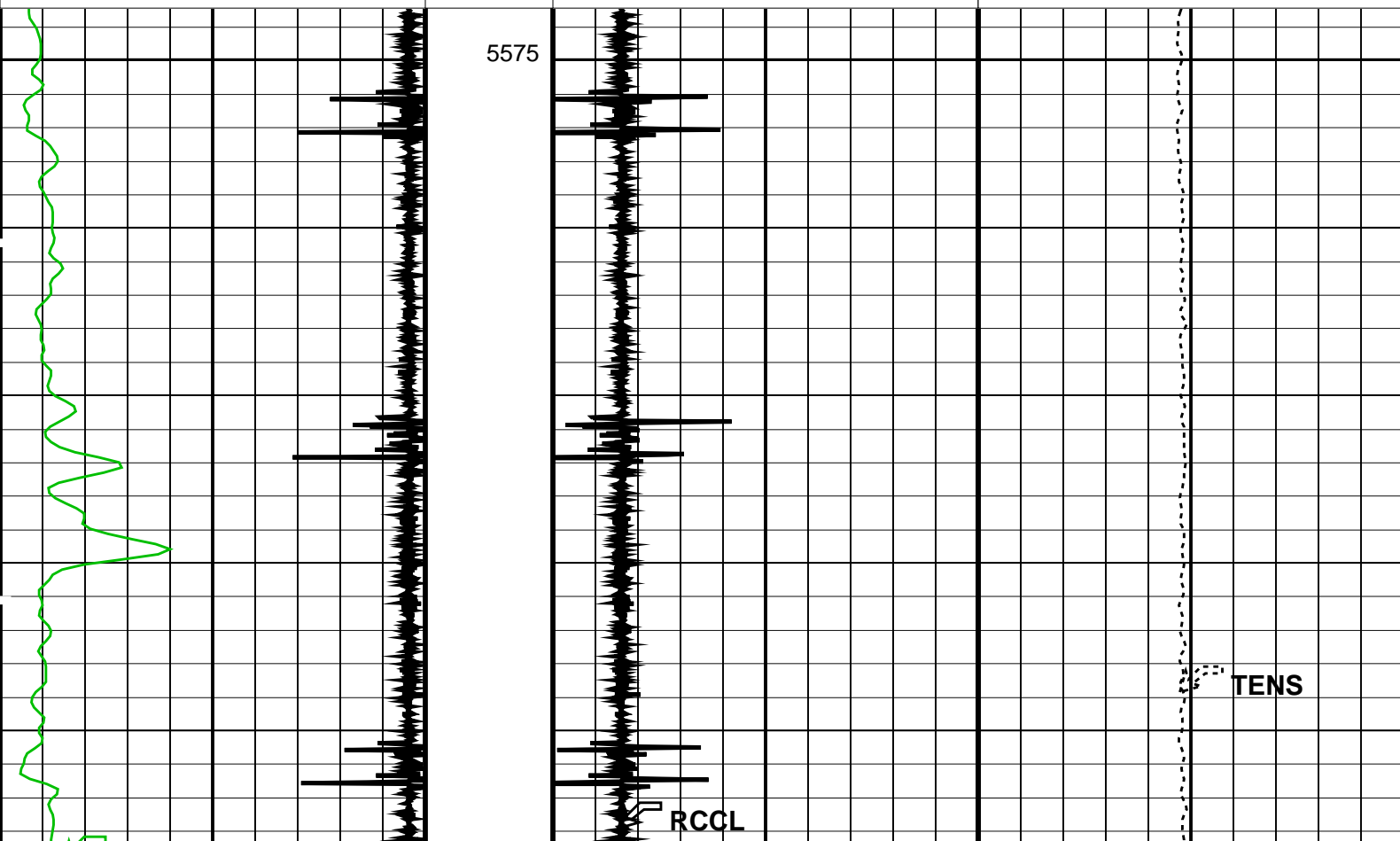
0 150

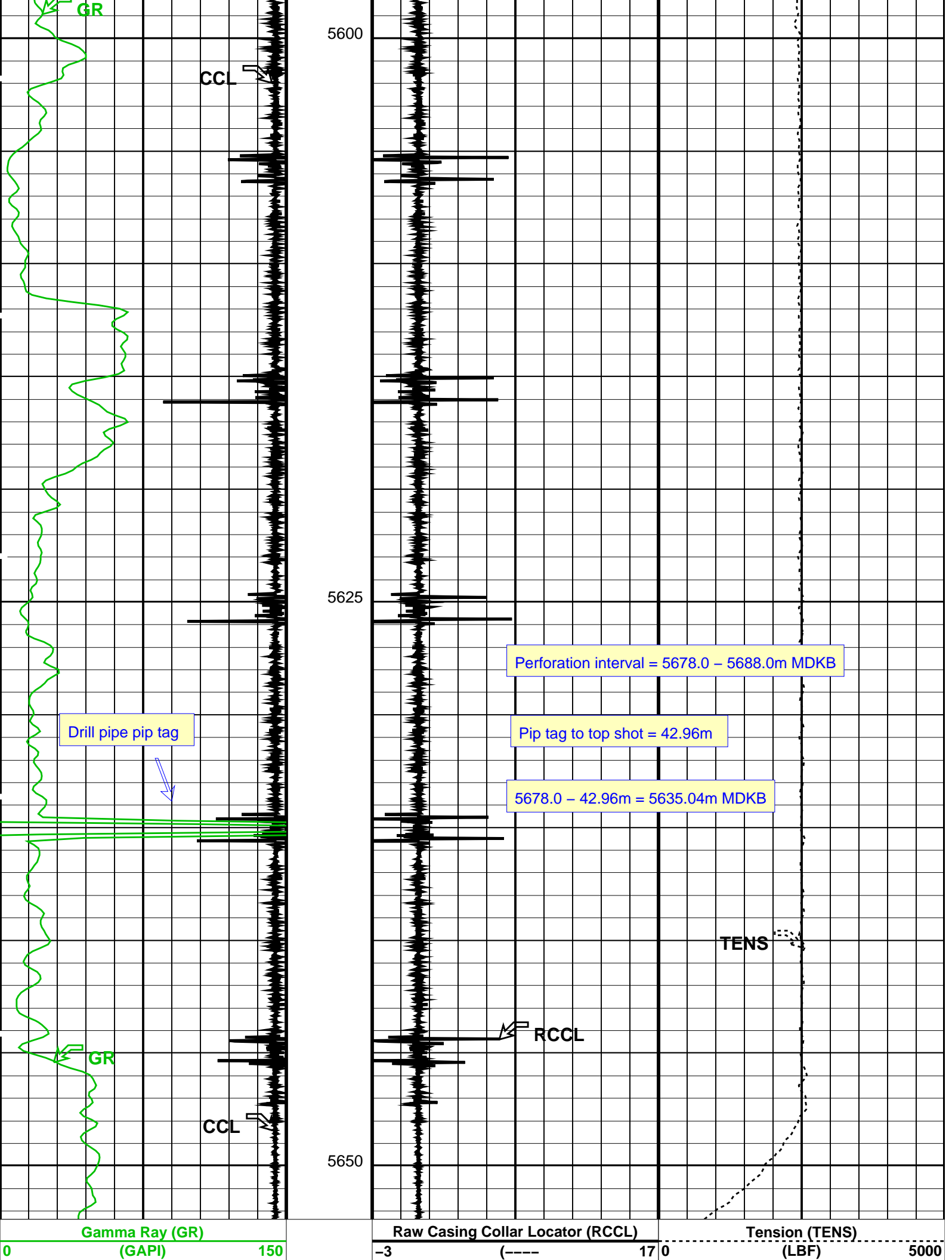
#### Raw Casing Collar Locator (RCCL)

-3 (----) 17

#### Tension (TENS)

0 (LBF) 5000





Casing Collar Locator (CCL)			
-19	(----	1	
PIP SUMMARY			
Time Mark Every 60 S			
Format: CCLLog		Vertical Scale: 1:200	Graphics File Created: 12-Aug-2008 09:17
OP System Version: 15C0-309			
MCM			
SHM_GUN	SRPC-3582-Q1_2008_OP15	UPCT-A	15C0-309
Output DLIS Files			
DEFAULT	PERFO_057LUP	FN:56	PRODUCER 12-Aug-2008 09:17
Company: Esso Australia Pty Ltd			
Well: SNA M33a			
Field: Bass Strait			
Rig: Rig 175			
Country: Australia			
Schlumberger			
Depth Determination			
MAXR set on Drill pipe			
12-08-2008			