



Company: Esso Australia Pty Ltd.

Well: A-4c  
Field: Fortescue  
Rig: Crane / Prod 4      Country: Australia

2 1/8" Powerjet Perforation Record  
7" 26 lb/ft Posiset Plug  
Setting Record

Rig: Crane / Prod 4

Field: Fortescue

Location: Gippsland

Well: A-4c

Company: Esso Australia Pty Ltd.

LOCATION	
Gippsland	Elev.: K.B. 42.29 m
Basin	G.L. -69 m
Bass Strait	D.F. 42.29 m
Permanent Datum:	M.S.L. _____
Log Measured From:	D.F. _____
Drilling Measured From:	D.F. _____
State: Victoria	Max. Well Deviation 61 deg
	Longitude 148°16'36.62"E
	Latitude 038°24'31.39"S

Logging Date	14-Jun-2008
Run Number	1 thru 3
Depth Driller	3222 m
Schlumberger Depth	3221.5 m
Bottom Log Interval	3210 m
Top Log Interval	3140 m
Casing Fluid Type	Production Fluids
Salinity	
Density	
Fluid Level	1235 m
BIT/CASING/TUBING STRING	
Bit Size	8.500 in
From	2068 m
To	3304 m
Casing/Tubing Size	7.000 in
Weight	26 lbm/ft
Grade	L-80
From	21.44 m
To	3303.56 m
Maximum Recorded Temperatures	225 degF
Logger On Bottom	14-Jun-2008
Unit Number	889
Recorded By	G Wright.
Witnessed By	G Rimmer.

	Oil Density	Run 1
	Water Salinity	
	Gas Gravity	
	Bo	
	Bw	
	1/Bg	
	Bubble Point Pressure	
	Bubble Point Temperature	
	Solution GOR	
	Maximum Deviation	61 deg
	CEMENTING DATA	
	Primary/Squeeze	Primary
	Casing String No	
	Lead Cement Type	
	Volume	
	Density	
	Water Loss	
	Additives	
	Tail Cement Type	
	Volume	
	Density	
	Water Loss	
	Additives	
	Expected Cement Top	
	Logging Date	
	Run Number	
	Depth Driller	
	Schlumberger Depth	
	Bottom Log Interval	
	Top Log Interval	
	Casing Fluid Type	
	Salinity	
	Density	
	Fluid Level	
	BIT/CASING/TUBING STRING	
	Bit Size	
	From	
	To	
	Casing/Tubing Size	
	Weight	
	Grade	
	From	
	To	
	Maximum Recorded Temperatures	
	Logger On Bottom	
	Unit Number	
	Recorded By	
	Witnessed By	

## DEPTH SUMMARY LISTING

Date Created: 12-JUN-2008 13:10:31

### Depth System Equipment

Depth Measuring Device	Tension Device	Logging Cable
Type: IDW-BE Serial Number: 6373 Calibration Date: 4-Jan-2007 Calibrator Serial Number: 9 Calibration Cable Type: 2-32ZT Wheel Correction 1: -2 Wheel Correction 2: -4	Type: PSDS/OSDS Serial Number: 325357 Calibration Date: 10-Jun-2008 Calibrator Serial Number: 1174 Calibration Gain: 0.95 Calibration Offset: -137.00	Type: 2-32ZT Serial Number: 208196 Length: 7010.10 M Conveyance Method: Wireline Rig Type: Offshore_Fixed

### Depth Control Parameters

Log Sequence:	Subsequent Log In the Well
Reference Log Name:	ExxonMobil Solar Composite Log

### Depth Control Remarks

1. IDW used as primary depth control 2. Z-chart used as secondary backup
---

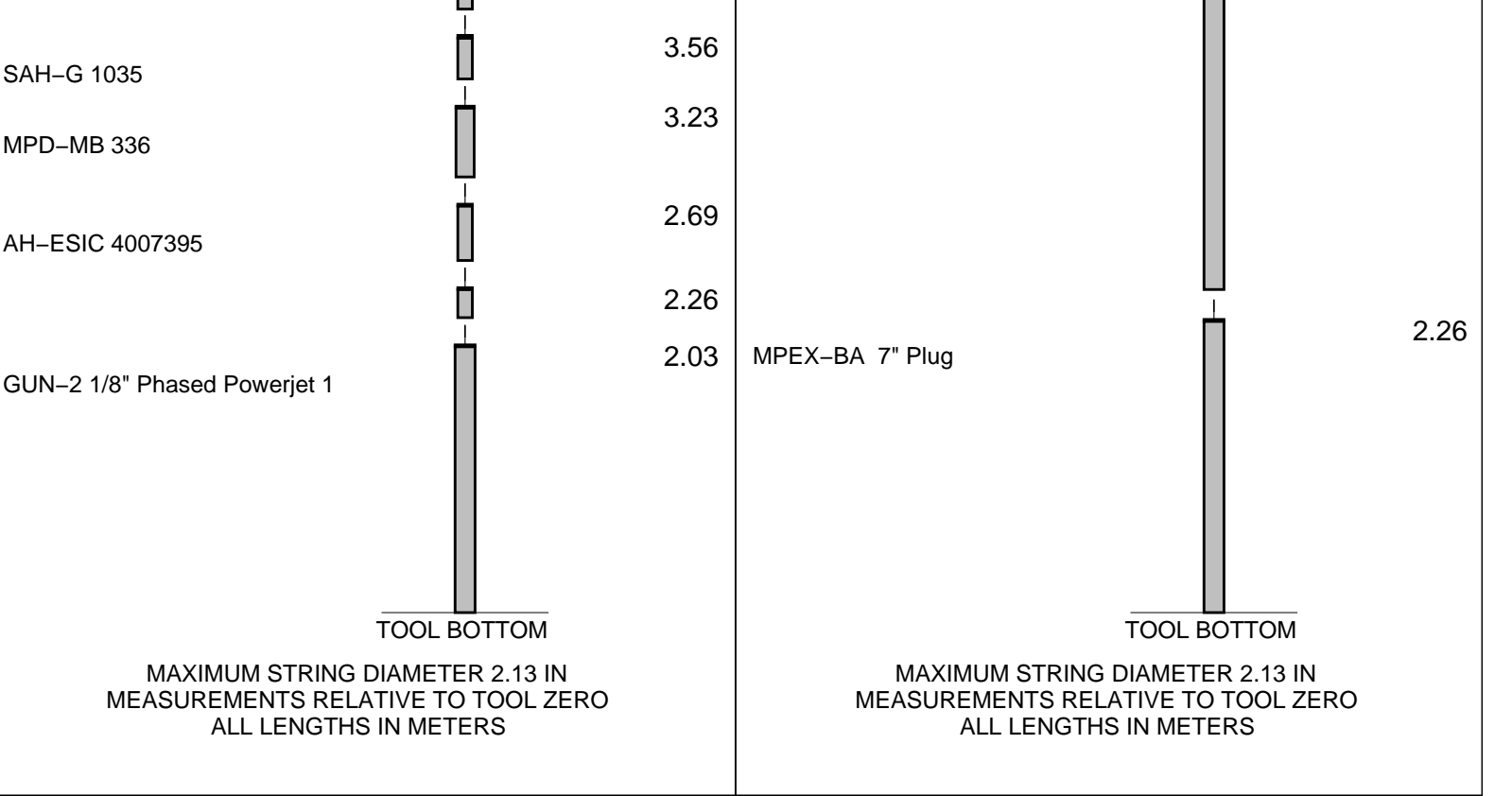
#### DISCLAIMER

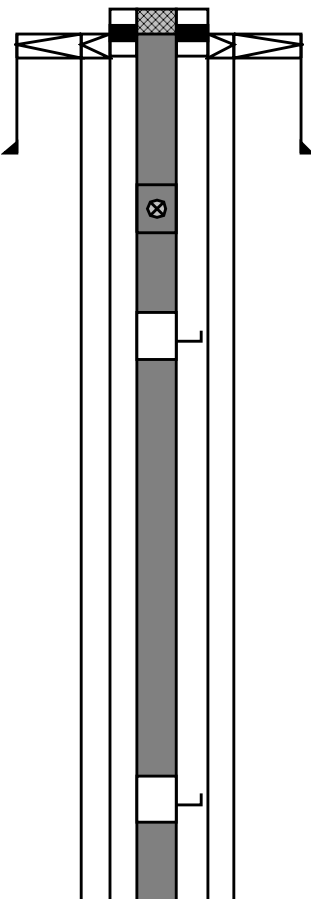
THE USE OF AND RELIANCE UPON THIS RECORDED-DATA BY THE HEREIN NAMED COMPANY (AND ANY OF ITS AFFILIATES, PARTNERS, REPRESENTATIVES, AGENTS, CONSULTANTS AND EMPLOYEES) IS SUBJECT TO THE TERMS AND CONDITIONS AGREED UPON BETWEEN SCHLUMBERGER AND THE COMPANY, INCLUDING: (a) RESTRICTIONS ON USE OF THE RECORDED-DATA; (b) DISCLAIMERS AND WAIVERS OF WARRANTIES AND REPRESENTATIONS REGARDING COMPANY'S USE OF AND RELIANCE UPON THE RECORDED-DATA; AND (c) CUSTOMER'S FULL AND SOLE RESPONSIBILITY FOR ANY INFERENCE DRAWN OR DECISION MADE IN CONNECTION WITH THE USE OF THIS RECORDED-DATA.

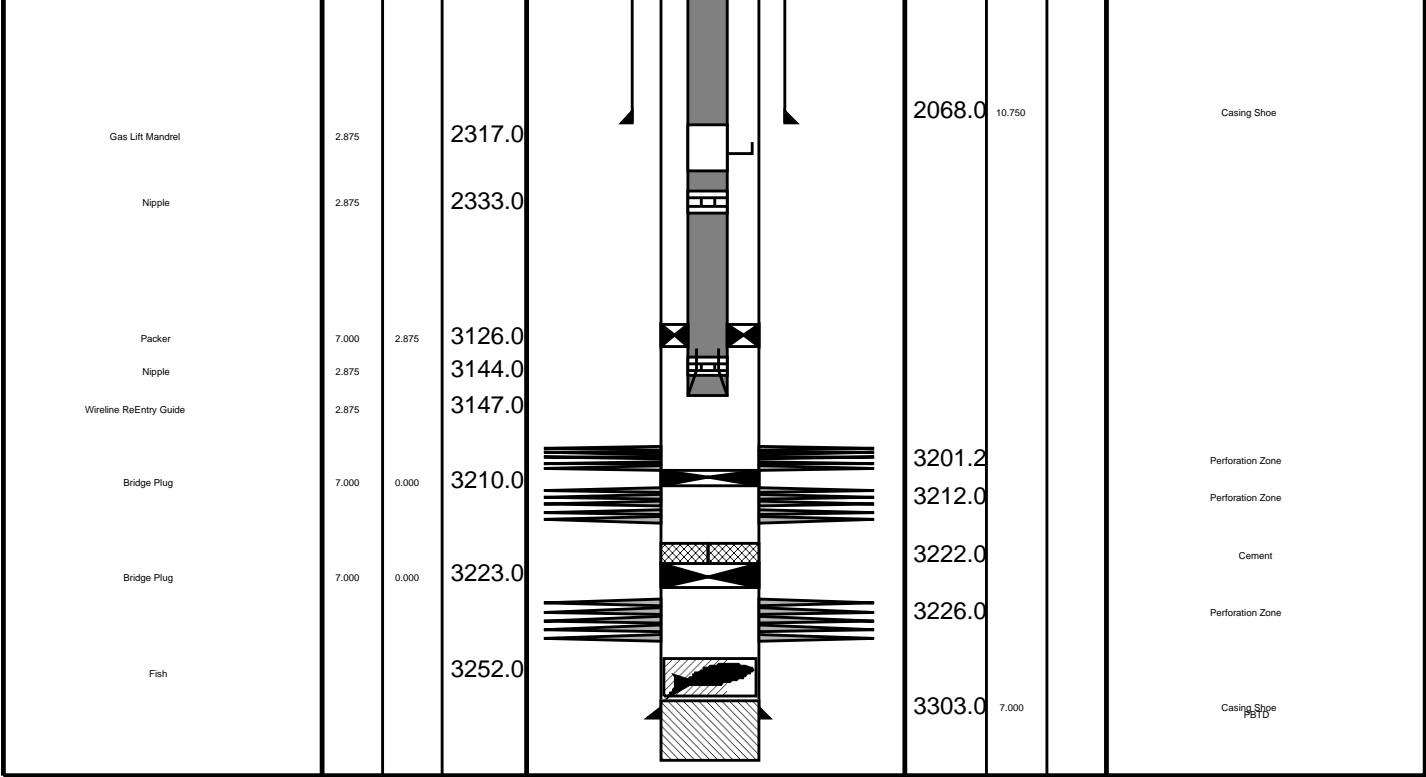
OTHER SERVICES1 OS1: RST-C Sigma Survey
--

REMARKS: RUN NUMBER 1
Objective: Perforate the Well over the interval 3201.2m to 3203m MDKB using a 1.8m Phased Powerjet Gun
Set a 7" 26lb/ft posiset Plug at 3210m MDKB.
Log Correlated to ExxonMobil Solar Composite Log Supplied with Logging Program.
Maximum Well Deviation: 61deg @ 2075m MDKB
Gun#1 @ 3201.2m MDKB
Top shot @ 3201.2m MDKB
CCL to top Shot = 3.5 mtrs.
CCL stop depth = 3197.7 m MDKB





Production String	(in)		(m)	Well Schematic	(m)	(in)		Casing String
	OD	ID	MD		MD	OD	ID	
Tubing Hanger Tubing	7.000	2.875	21.5		21.5	7.000	7.000	Casing String Conductor Pipe
	2.875		21.5		22.0	20.000		
Shut-in Valve			431.0		22.0	10.750		Casing String Liner Hanger
					22.0	20.000	10.750	
Gas Lift Mandrel			699.0		190.0	20.000		Casing Shoe
Gas Lift Mandrel			1656.0					



## Job Event Summary

MAXIS Field Log

### Schlumberger Job Event Summary

Time	Elapsed Time	Depth (M)	File
Log Pass (down)	14-Jun-2008 8:04 000:38	660.8 - 1879.1	PERFO_034LDP
Log Pass (down)	14-Jun-2008 8:43 000:02	1849.4 - 1878.2	PERFO_035LDP
Log Pass (down)	14-Jun-2008 8:50 000:02	1807.0 - 1847.4	PERFO_036LDP
Log Pass (down)	14-Jun-2008 8:54 000:02	1796.0 - 1829.1	PERFO_037LDP
Log Pass (down)	14-Jun-2008 9:00 000:11	1707.0 - 1836.4	PERFO_038LDP
Log Pass (down)	14-Jun-2008 9:13 000:18	1684.6 - 1844.8	PERFO_039LDP
Station Log	14-Jun-2008 9:41 000:04	1825.5 - 0.5	PERFO_040LTP
Log Pass (down)	14-Jun-2008 9:45 000:38	1823.2 - 3215.0	PERFO_041LDP
Log Pass (up)	14-Jun-2008 10:23 000:05	3214.1 - 3169.6	PERFO_042LUP
Log Pass (up)	14-Jun-2008 10:29 000:16	3213.2 - 3170.2	PERFO_043LUP
Station Log	14-Jun-2008 10:36 000:05	3197.7 - 0.8	PERFO_044LTP
Log Pass (up)	14-Jun-2008 10:47 000:10	3149.7 - 2514.0	PERFO_045LUP
Log Pass (down)	14-Jun-2008 11:59 000:46	16.6 - 3226.5	PERFO_048LDP
Log Pass (up)	14-Jun-2008 12:44 000:08	3226.5 - 3126.5	PERFO_049LUP
Log Pass (down)	14-Jun-2008 14:24 000:29	32.0 - 1143.5	CCL_052LDP
Log Pass (down)	14-Jun-2008 14:53 000:01	1122.7 - 1135.5	CCL_053LDP
Log Pass (down)	14-Jun-2008 14:58 000:01	1123.5 - 1134.8	CCL_054LDP

Log Pass (down) 14-Jun-2008 14:56 000:04 1087.5 - 1134.8 CCL\_054LDP  
Log Pass (down) 14-Jun-2008 15:00 000:04 1083.1 - 1142.5 CCL\_055LDP  
Log Pass (down) 14-Jun-2008 15:18 000:43 1123.0 - 3187.6 CCL\_056LDP  
Log Pass (up) 14-Jun-2008 16:01 000:03 3187.6 - 3144.0 CCL\_057LUP  
Simulated Log 14-Jun-2008 16:08 000:27 CCL\_058LUP  
Log Pass (up) 14-Jun-2008 16:36 000:03 3203.0 - 3140.0 CCL\_059LUP

**Schlumberger**

7" Posiset Plug  
Log Away After Setting

MAXIS Field Log

Output DLIS Files

DEFAULT CCL\_059LUP FN:57 PRODUCER 14-Jun-2008 16:36 3203.0 M 3140.0 M

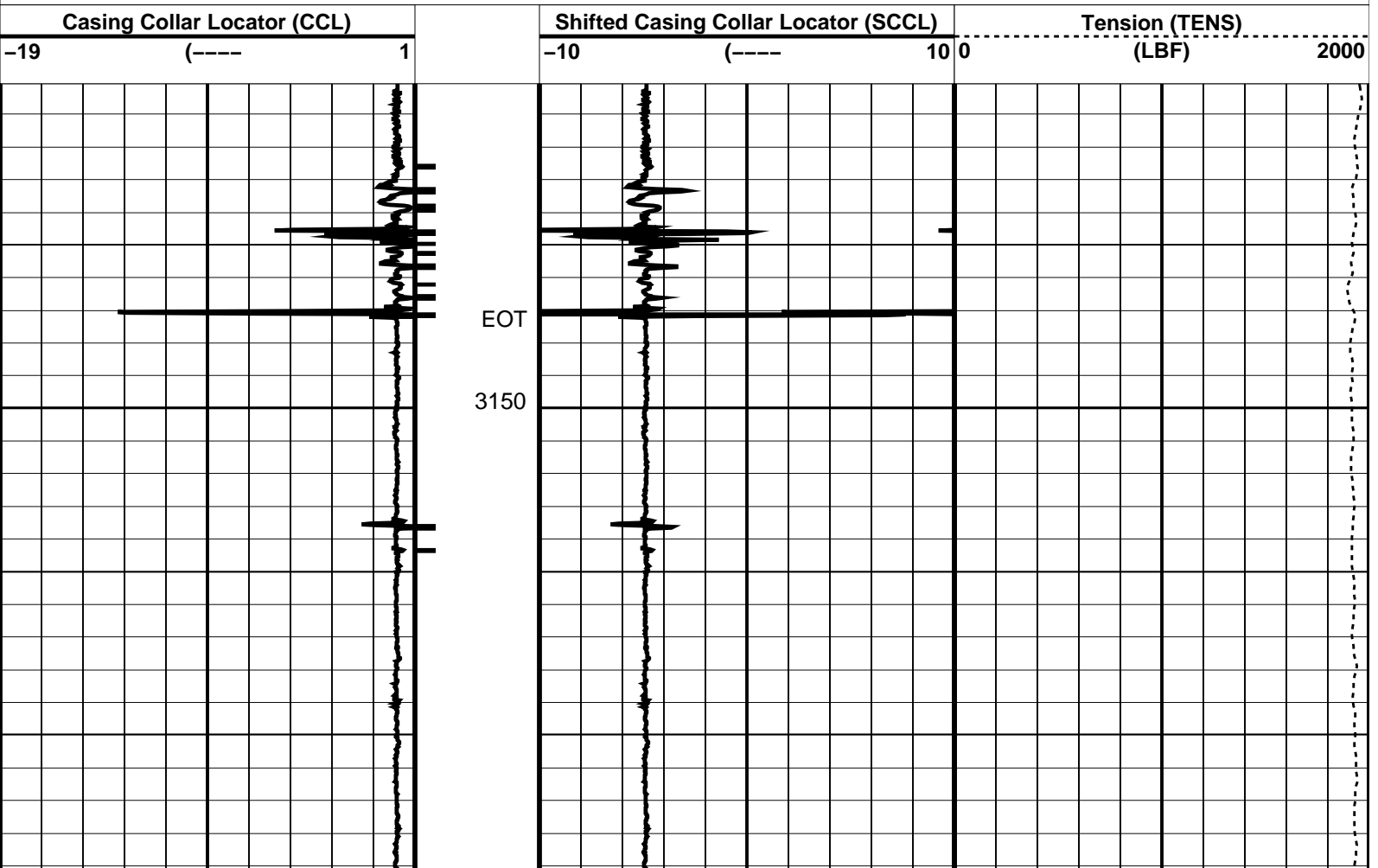
OP System Version: 15C0-309  
MCM

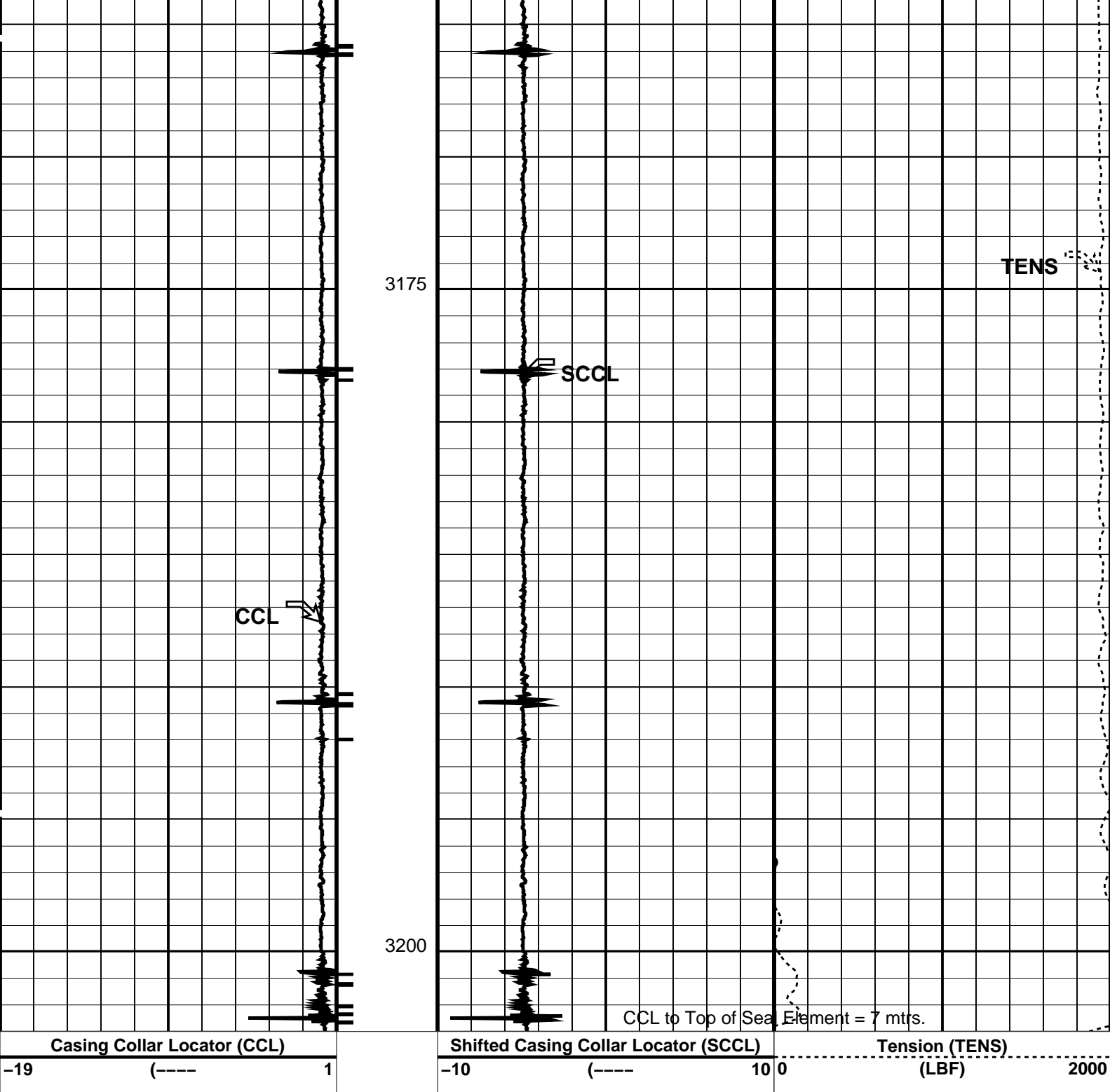
MPEX-EA\_S SRPC-3546-Q1\_2008\_OP15 MPSU-CA SRPC-3546-Q1\_2008\_OP15  
CCL-L SRPC-3546-Q1\_2008\_OP15

PIP SUMMARY

└─ Casing Collars

Time Mark Every 60 S





PIP SUMMARY

Time Mark Every 60 S

└─ Casing Collars

Parameters			
DLIS Name		Description	Value
CCL-L: Casing Collar Locator			
CCLD		CCL reset delay	12 IN
CCLT		CCL Detection Level	0.3 V
Format: PERFO		Vertical Scale: 1:200	Graphics File Created: 14-Jun-2008 16:36
OP System Version: 15C0-309			
MCM			
MPEX-EA_S	SRPC-3546-Q1_2008_OP15	MPSU-CA	SRPC-3546-Q1_2008_OP15
CCL-L	SRPC-3546-Q1_2008_OP15		



# Output DLIS Files

DEFAULT

CCL\_059LUP

FN:57

PRODUCER

14-Jun-2008 16:36

**Schlumberger**

7" Posiset Plug  
Set @ 3210m MDKB.

MAXIS Field Log

# Output DLIS Files

DEFAULT

CCL\_058LUP

FN:56

PRODUCER

14-Jun-2008 16:08

**OP System Version: 15C0-309**  
MCM

MPEX-EA\_S  
CCL-L

SRPC-3546-Q1\_2008\_OP15  
SRPC-3546-Q1\_2008\_OP15

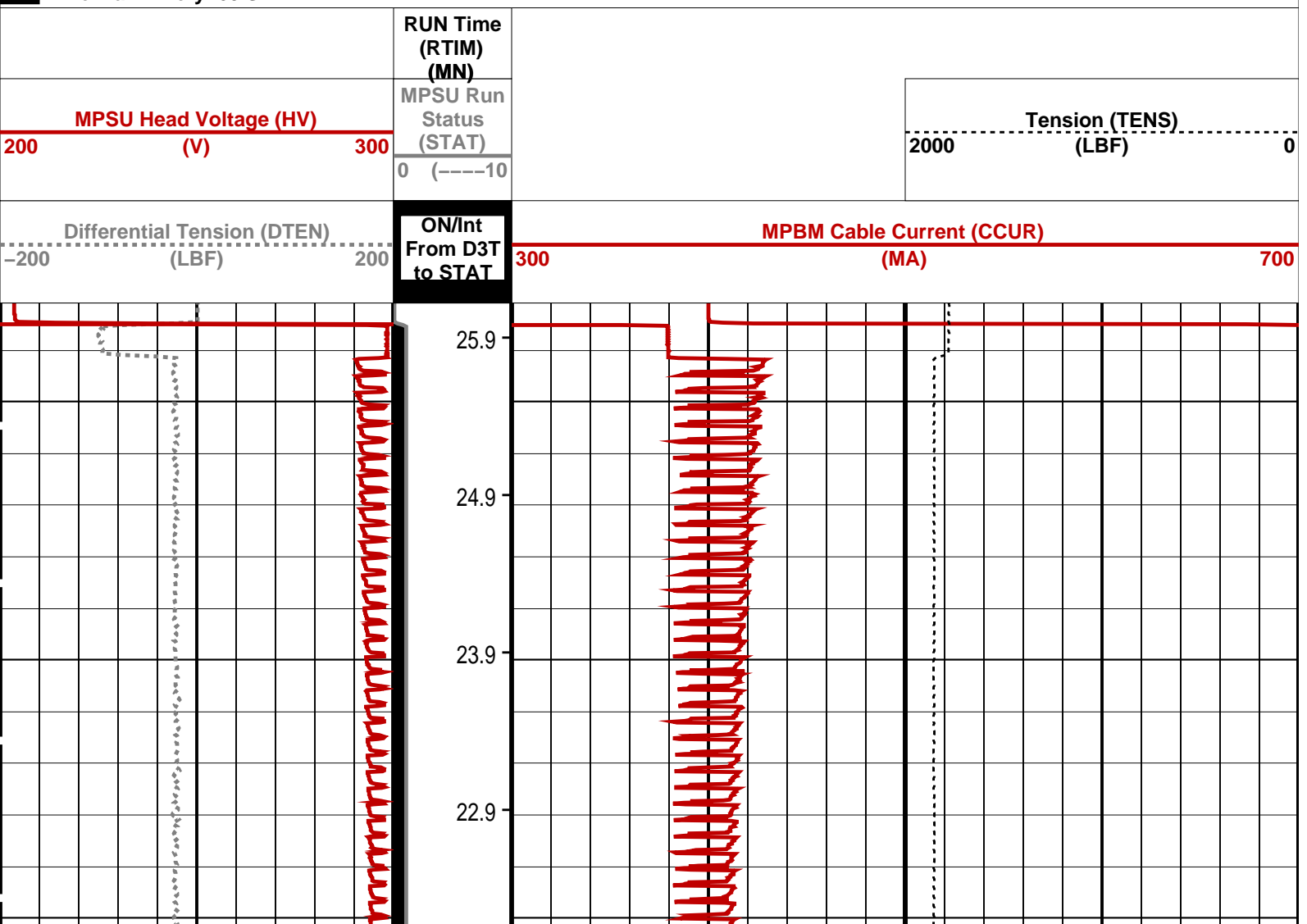
MPSU-CA

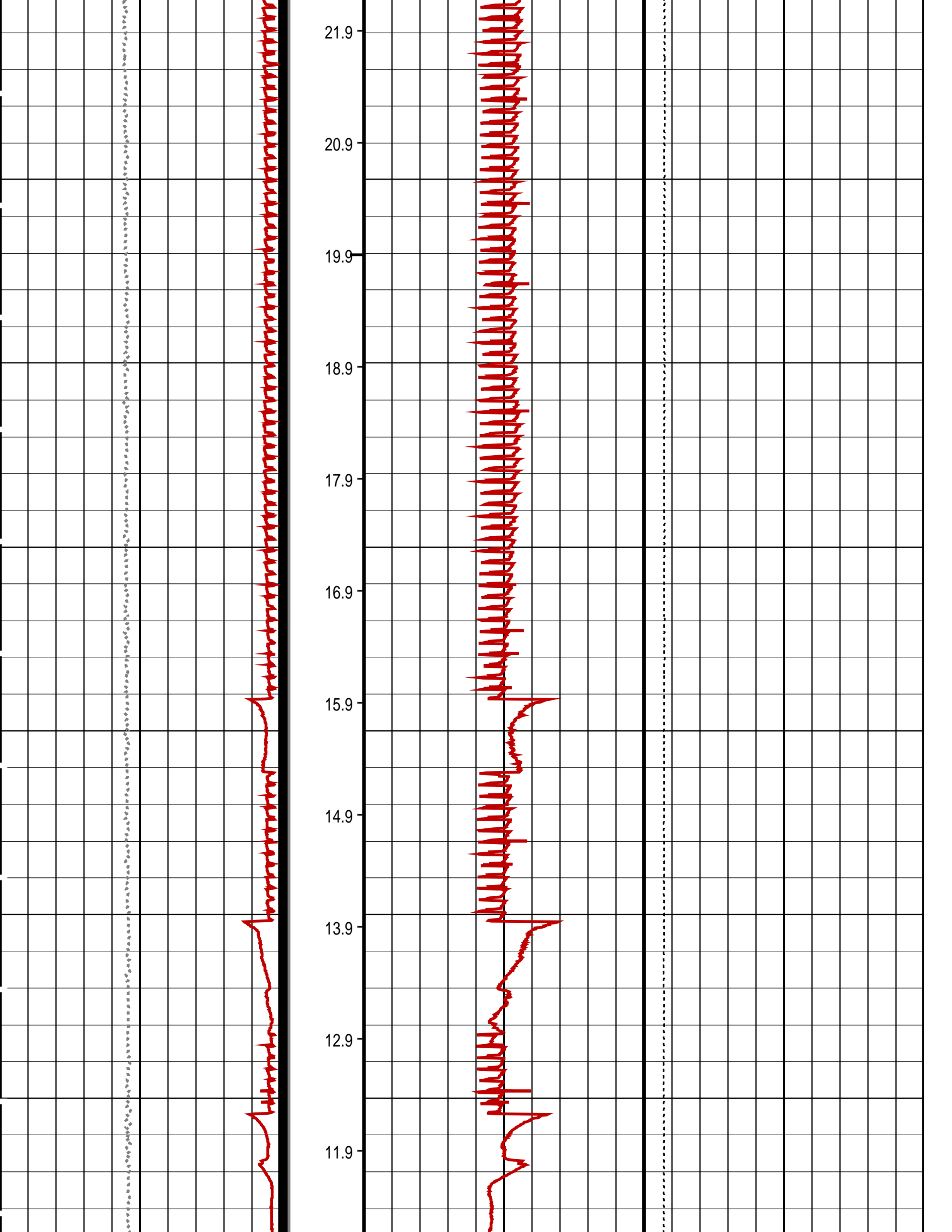
SRPC-3546-Q1\_2008\_OP15

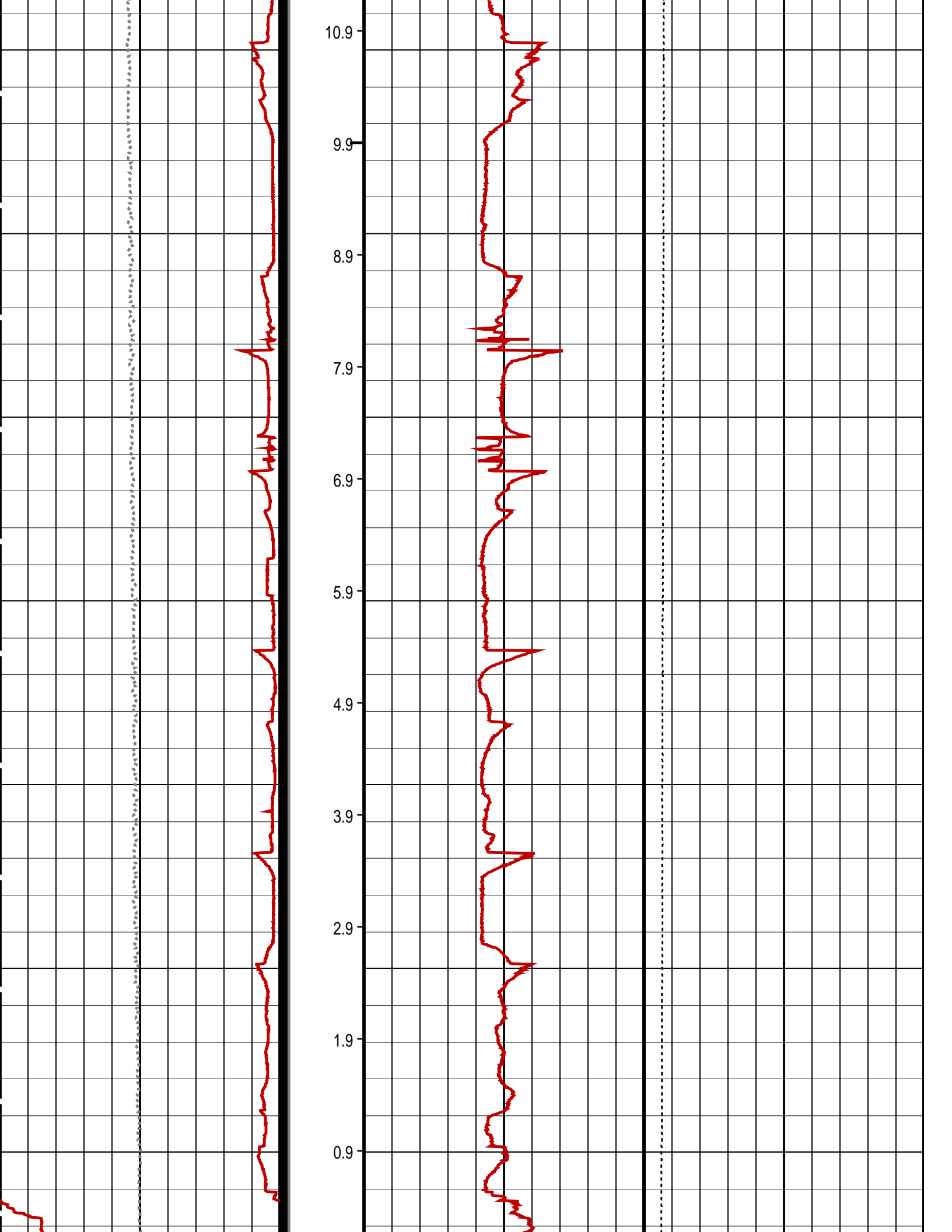
## PIP SUMMARY

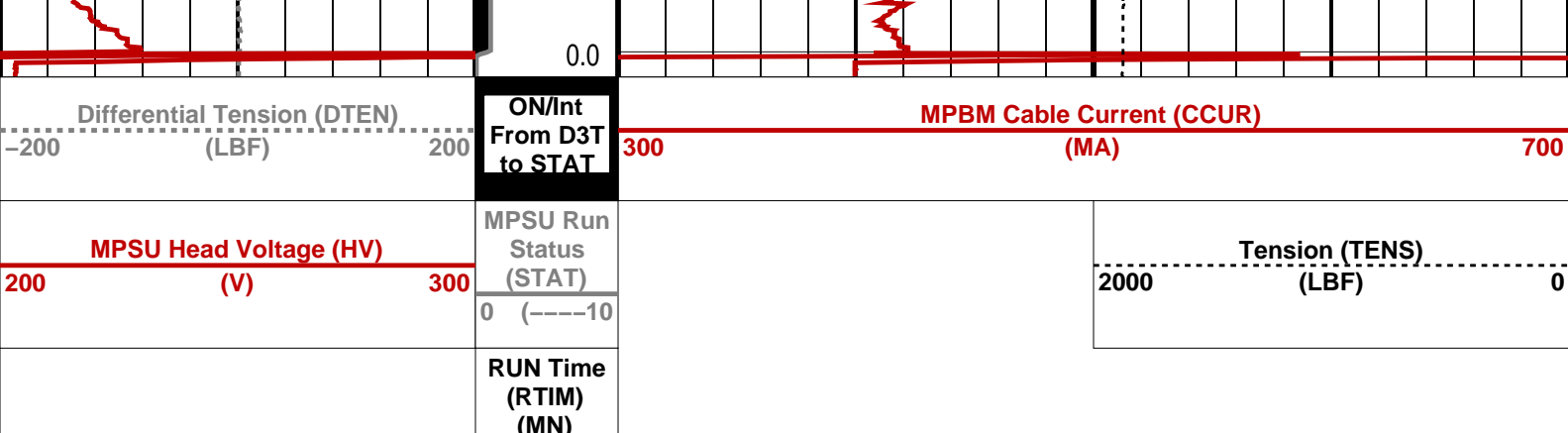
→ MPSU Run Time Every 1 MN  
→ MPSU Run Time Every 10 MN

Time Mark Every 60 S










PIP SUMMARY

→ MPSU Run Time Every 1 MN

→ MPSU Run Time Every 10 MN

Time Mark Every 60 S

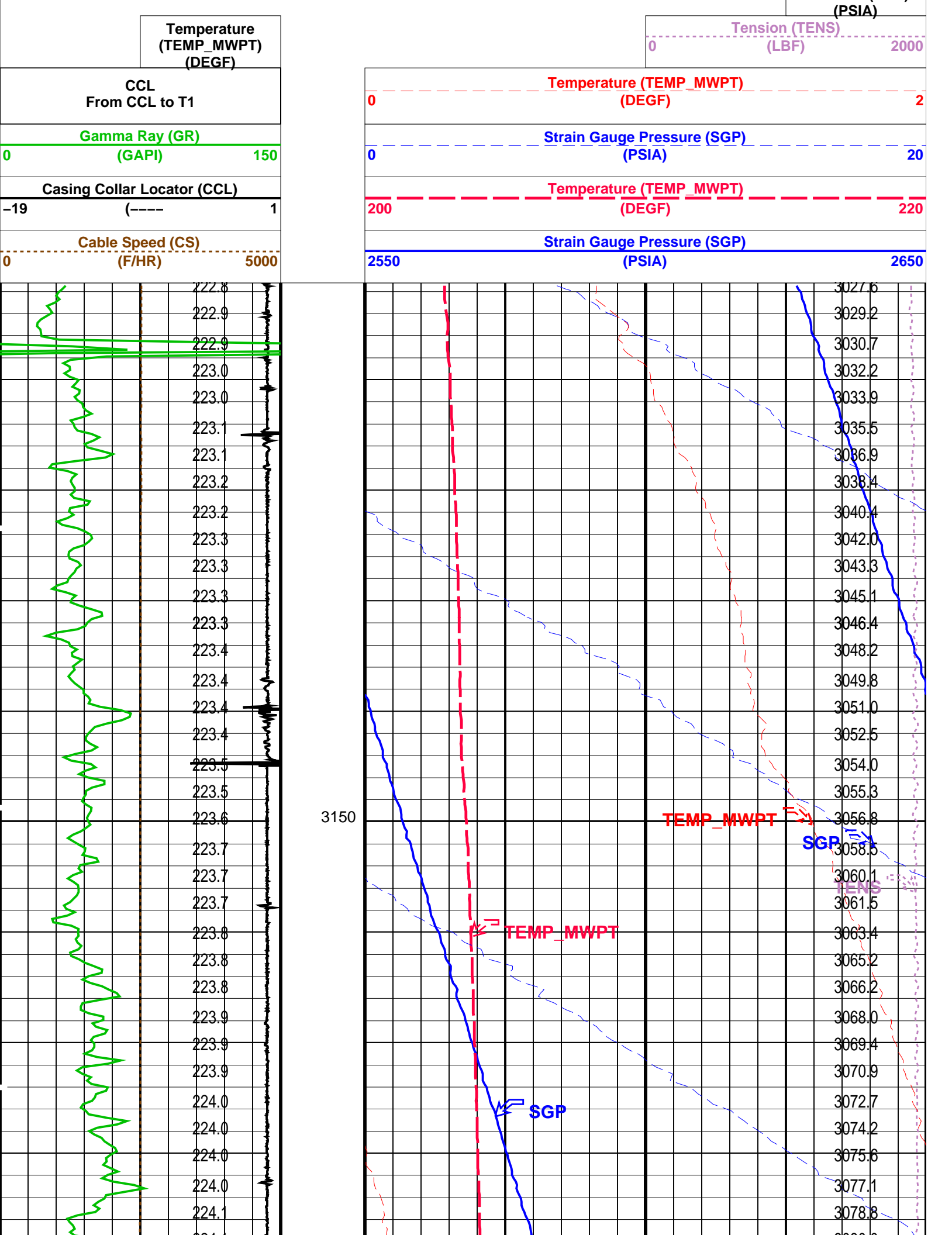
Parameters			
DLIS Name	Description	Value	
MPSU-CA: MECHANICAL PLUGBACK SETTING UNIT			
IPUMP	Intensifier Pump	TRUE	
Format: MPBT	Vertical Scale: 1:600	Graphics File Created: 14-Jun-2008 16:08	
OP System Version: 15C0-309			
MCM			
MPEX-EA_S	SRPC-3546-Q1_2008_OP15	MPSU-CA	SRPC-3546-Q1_2008_OP15
CCL-L	SRPC-3546-Q1_2008_OP15		
Output DLIS Files			
DEFAULT	CCL_058LUP	FN:56	PRODUCER 14-Jun-2008 16:08



Dummy Plug Pass

MAXIS Field Log

Company: Esso Australia Pty Ltd.						Well: A-4c
Input DLIS Files						
DEFAULT	PERFO_049LUP	FN:47	PRODUCER	14-Jun-2008 12:44	3226.5 M	3126.5 M
Output DLIS Files						
DEFAULT	PERFO_050PUP	FN:48	PRODUCER	14-Jun-2008 12:53	3225.1 M	3125.6 M
OP System Version: 15C0-309						
MCM						
MWP_GUN	SRPC-3546-Q1_2008_OP15	MWPT-CA		SRPC-3546-Q1_2008_OP15		
MWGT-AA	SRPC-3546-Q1_2008_OP15					
PIP SUMMARY						
Time Mark Every 60 S						Pressure (SGP)





		226.7	3225			3186.1
Cable Speed (CS) (F/HR)				Strain Gauge Pressure (SGP) (PSIA)		
0		5000		2550		2650
Casing Collar Locator (CCL) (----				Temperature (TEMP_MWPT) (DEGF)		
-19		1		200		220
Gamma Ray (GR) (GAPI)				Strain Gauge Pressure (SGP) (PSIA)		
0		150		0		20
CCL From CCL to T1				Temperature (TEMP_MWPT) (DEGF)		
				0		2
		Temperature (TEMP_MWPT) (DEGF)				Tension (TENS) (LBF)
				0		2000
				Pressure (SGP) (PSIA)		


PIP SUMMARY							
Time Mark Every 60 S							

Parameters			
DLIS Name	Description	Value	
MWPT-CA: MEASUREMENT WHILE PERFORATING TOOL			
DEVI_FL_CORR	Deviation Angle for Flow Line Correction	0	DEG
FLD	Flow Line Density	1	G/C3
MWPT_NULL_SOURCE	MWPT NULL Temperature Source	TEMS	
MWPT_NULL_TEMP	MWPT NULL Temperature	0.0	DEGC
System and Miscellaneous			
DO	Depth Offset for Playback	-1.3	M
PP	Playback Processing	NORMAL	

Format: MWP	Vertical Scale: 1:200	Graphics File Created: 14-Jun-2008 12:53					
-------------	-----------------------	--	--	--	--	--	--

OP System Version: 15C0-309			
MCM			
MWP_GUN	SRPC-3546-Q1_2008_OP15	MWPT-CA	SRPC-3546-Q1_2008_OP15
MWGT-AA	SRPC-3546-Q1_2008_OP15		

Input DLIS Files						
DEFAULT	PERFO_049LUP	FN:47	PRODUCER	14-Jun-2008 12:44	3226.5 M	3126.5 M
Output DLIS Files						
DEFAULT	PERFO_050PUP	FN:48	PRODUCER	14-Jun-2008 12:53		

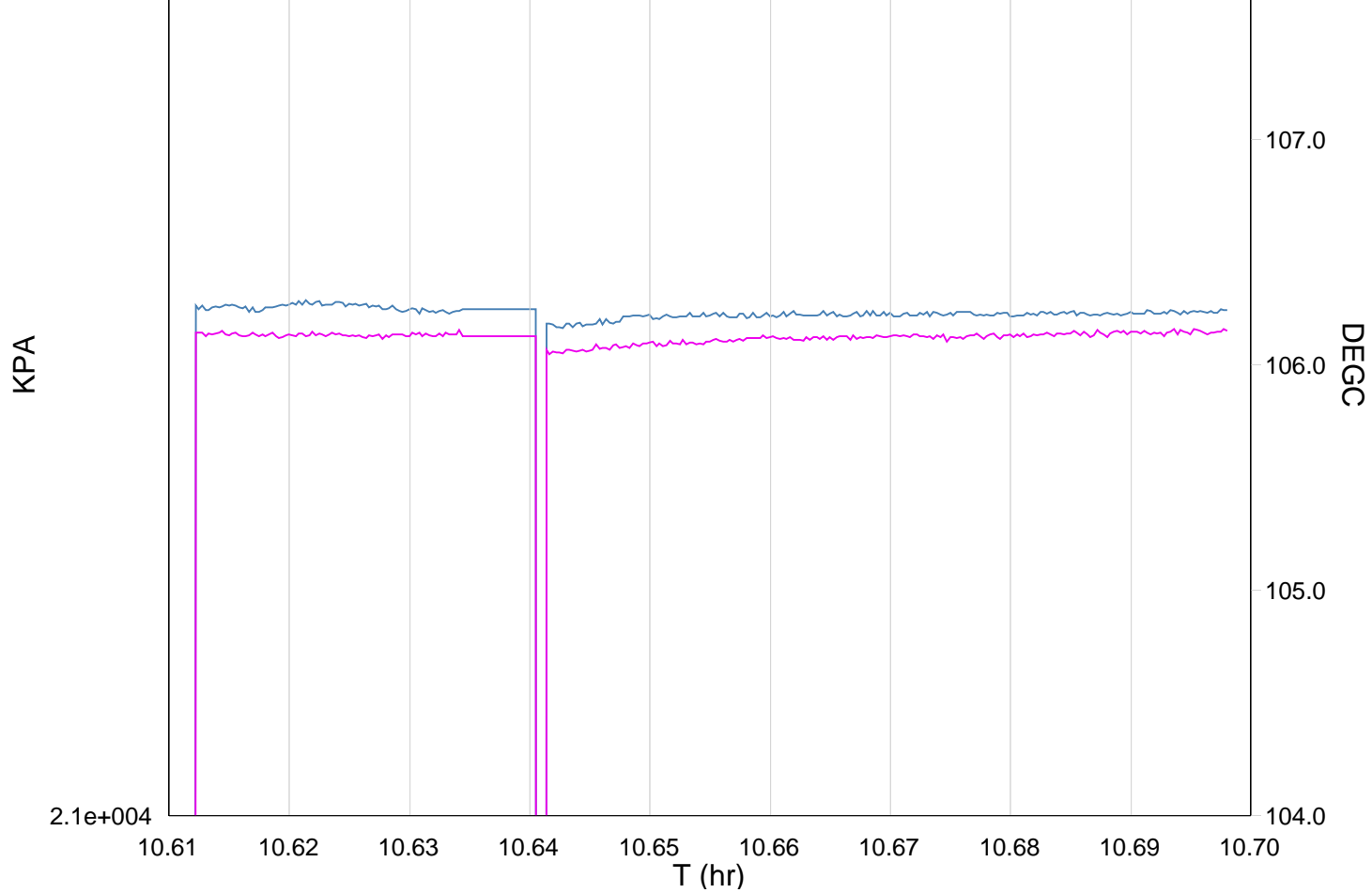


GUN # 1

3201.2m to 3203m MDKB.

MAXIS Field Log





TIME	DEGF	PSIA
9460.0	223.22	3123.947
9440.0	223.22	3123.615
9420.0	223.22	3123.323
9400.0	223.22	3122.914
9380.0	223.19	3122.887
9360.0	223.20	3122.753
9340.0	223.20	3122.308
9320.0	223.18	3122.467
9300.0	223.19	3121.415
9280.0	223.13	3121.590
9260.0	223.24	3122.994
9240.0	223.24	3122.994
9220.0	223.25	3123.277
9200.0	223.28	3123.175
9180.0	223.24	3123.303
9160.0	223.28	3123.476



Shooting Pass



## Output DLIS Files

DEFAULT

PERFO\_043LUP

FN:41

PRODUCER

14-Jun-2008 10:29 3213.2 M

3170.2 M

## OP System Version: 15C0-309

MCM

MWP\_GUN

SRPC-3546-Q1\_2008\_OP15

MWPT-CA

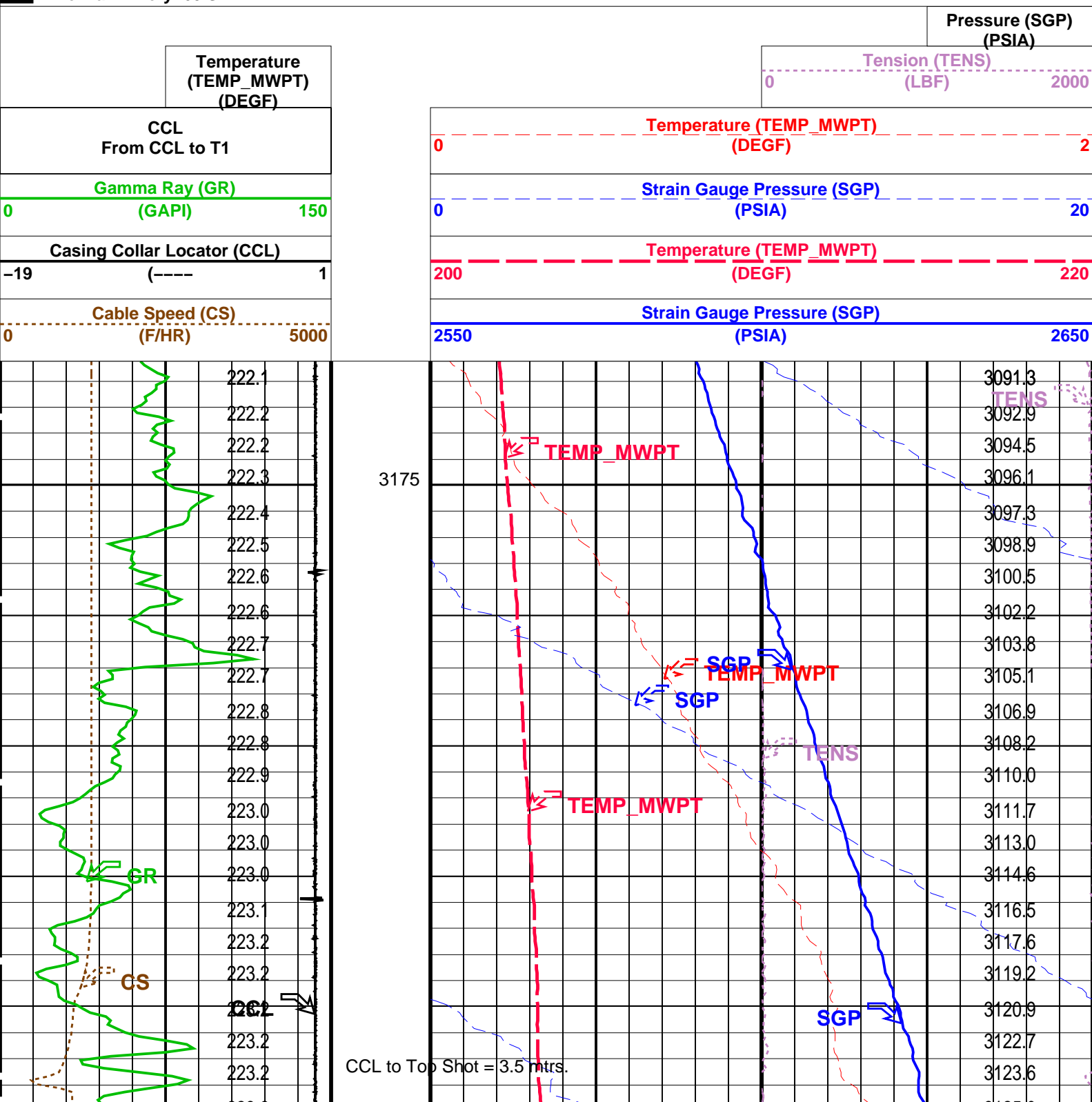
SRPC-3546-Q1\_2008\_OP15

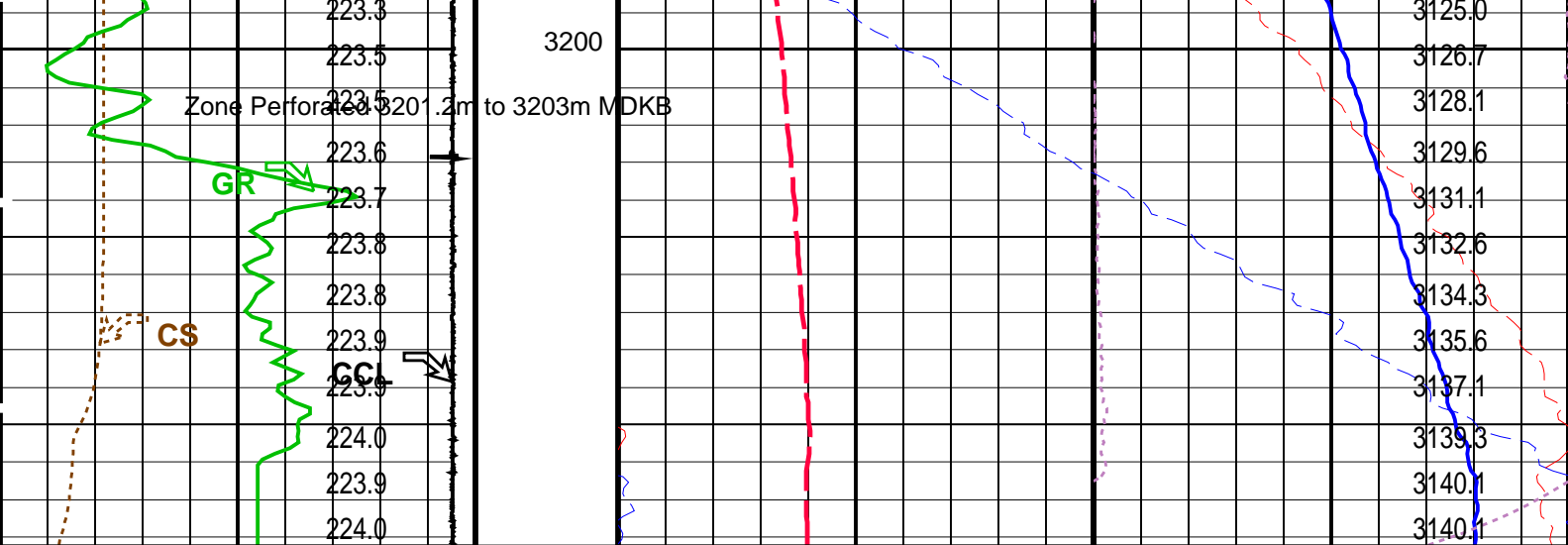
MWGT-AA

SRPC-3546-Q1\_2008\_OP15

## PIP SUMMARY

Time Mark Every 60 S





Cable Speed (CS) (F/HR)		0	5000
Casing Collar Locator (CCL) (----)		-19	1
Gamma Ray (GR) (GAPI)		0	150
CCL From CCL to T1			
Temperature (TEMP_MWPT) (DEGF)			
Strain Gauge Pressure (SGP) (PSIA)		2550	2650
Temperature (TEMP_MWPT) (DEGF)		200	220
Strain Gauge Pressure (SGP) (PSIA)		0	20
Temperature (TEMP_MWPT) (DEGF)		0	2
Tension (TENS) (LBF)		0	2000
Pressure (SGP) (PSIA)			

PIP SUMMARY

Time Mark Every 60 S

Parameters		
DLIS Name	Description	Value
MWPT-CA: MEASUREMENT WHILE PERFORATING TOOL		
DEVI_FL_CORR	Deviation Angle for Flow Line Correction	0 DEG
FLD	Flow Line Density	1 G/C3
MWPT_NULL_SOURCE	MWPT NULL Temperature Source	TEMS
MWPT_NULL_TEMP	MWPT NULL Temperature	0.0 DEGC

Format: MWP Vertical Scale: 1:200 Graphics File Created: 14-Jun-2008 10:29

OP System Version: 15C0-309 MCM			
MWP_GUN	SRPC-3546-Q1_2008_OP15	MWPT-CA	SRPC-3546-Q1_2008_OP15
MWGT-AA	SRPC-3546-Q1_2008_OP15		

Output DLIS Files			
DEFAULT	PERFO_043LUP	FN:41	PRODUCER 14-Jun-2008 10:29



Correlation Pass

Output DLIS Files

DEFAULT

PERFO\_042LUP

FN:40

PRODUCER

14-Jun-2008 10:23

3214.1 M

3169.6 M

OP System Version: 15C0-309  
MCM

MWP\_GUN

SRPC-3546-Q1\_2008\_OP15

MWPT-CA

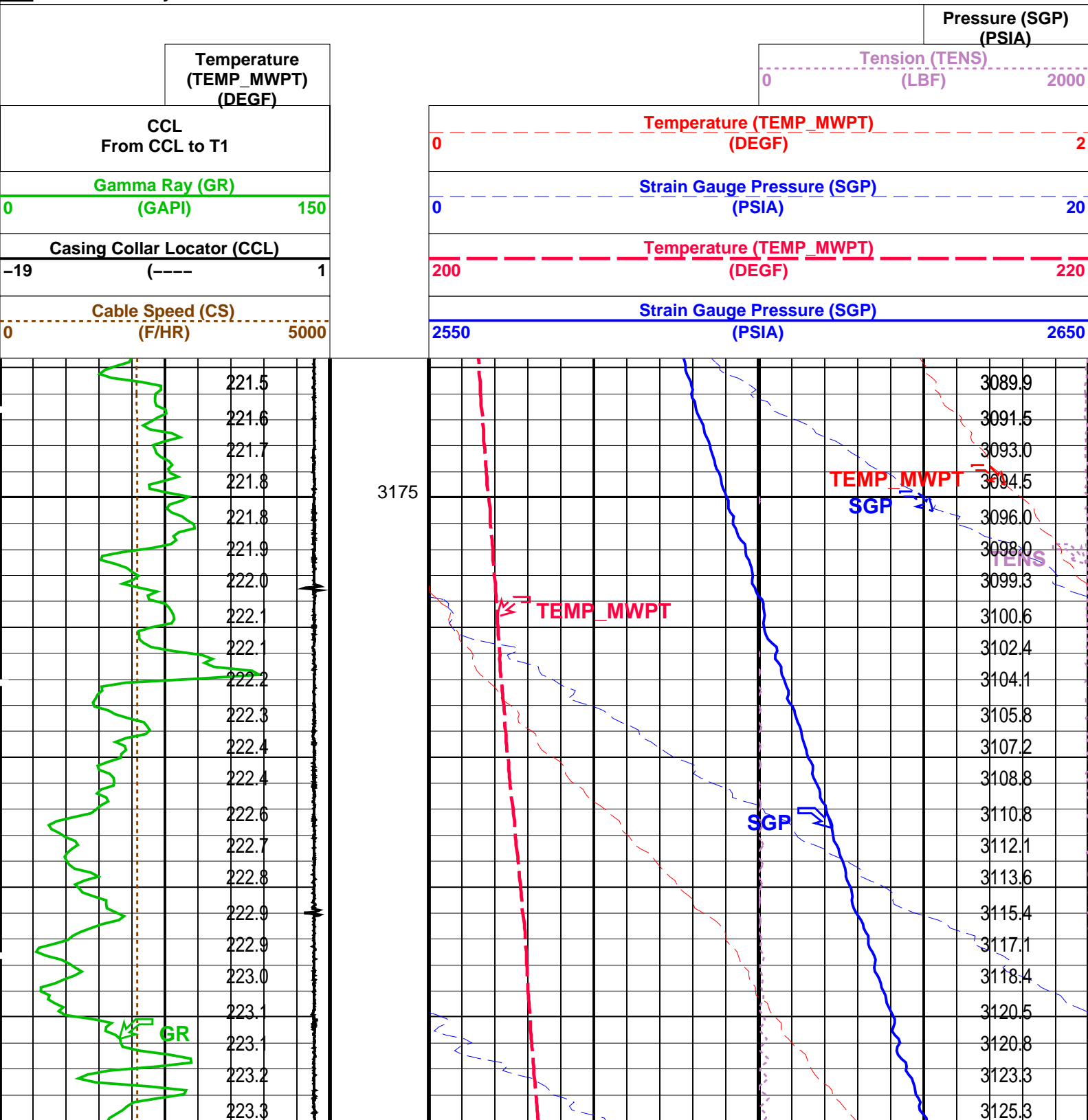
SRPC-3546-Q1\_2008\_OP15

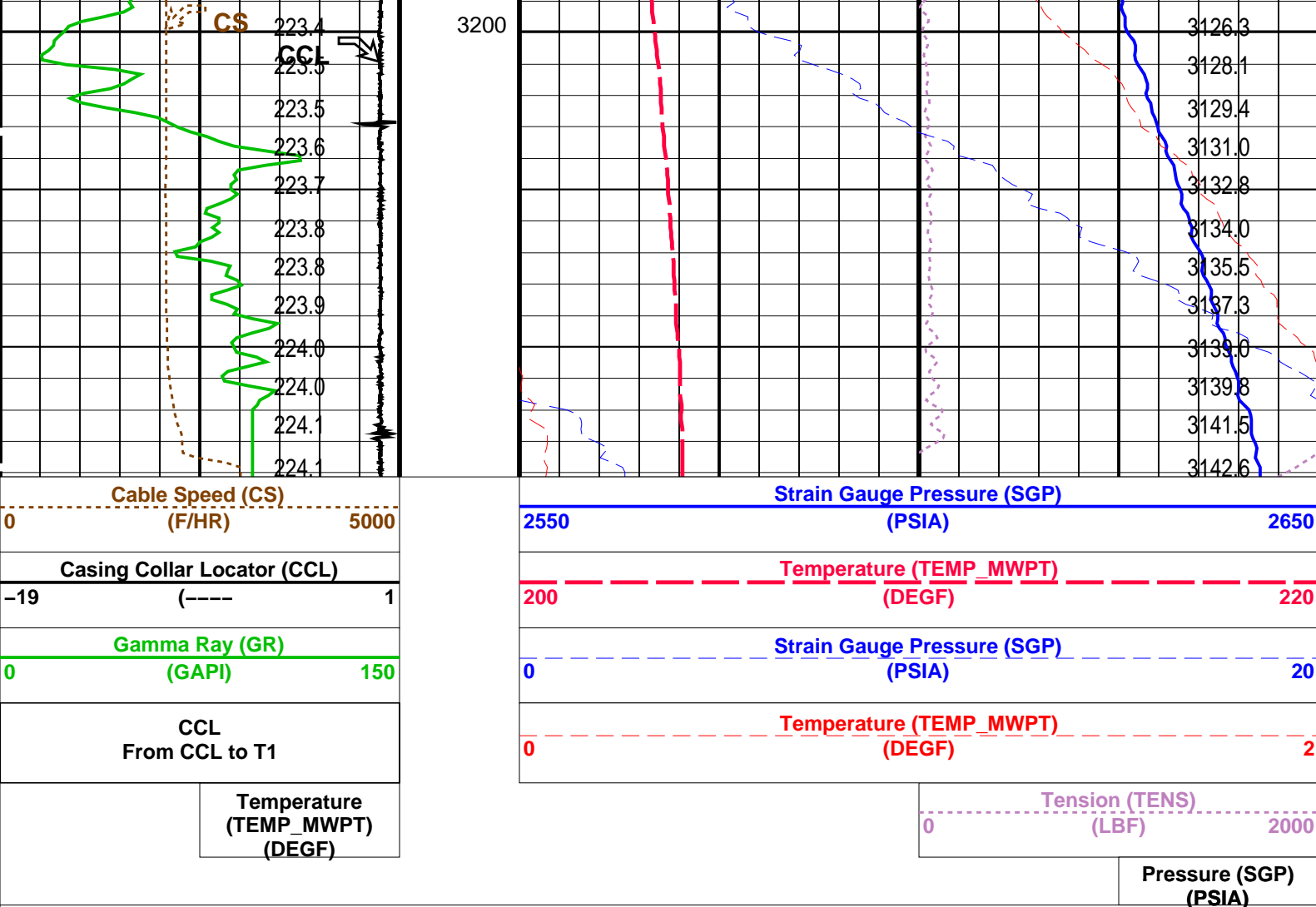
MWGT-AA

SRPC-3546-Q1\_2008\_OP15

PIP SUMMARY

Time Mark Every 60 S





#### PIP SUMMARY

Time Mark Every 60 S

#### Parameters

DLIS Name	Description	Value
MWPT-CA: MEASUREMENT WHILE PERFORATING TOOL		
DEVI_FL_CORR	Deviation Angle for Flow Line Correction	0 DEG
FLD	Flow Line Density	1 G/C3
MWPT_NULL_SOURCE	MWPT NULL Temperature Source	TEMS
MWPT_NULL_TEMP	MWPT NULL Temperature	0.0 DEGC

Format: MWP Vertical Scale: 1:200

Graphics File Created: 14-Jun-2008 10:23

#### OP System Version: 15C0-309

MCM

MWP_GUN	SRPC-3546-Q1_2008_OP15	MWPT-CA	SRPC-3546-Q1_2008_OP15
MWGT-AA	SRPC-3546-Q1_2008_OP15		

#### Output DLIS Files

DEFAULT	PERFO_042LUP	FN:40	PRODUCER	14-Jun-2008 10:23
---------	--------------	-------	----------	-------------------

Company: **Esso Australia Pty Ltd.**

**Schlumberger**

Well: **A-4c**

Field: **Fortescue**

Rig: **Crane / Prod 4**

Country: **Australia**

2 1/8" Powerjet Perforation Record

7" 26 lb/ft Posiset Plug

Setting Record