

Company: Esso Australia Pty Ltd.

Well: CBA F-1
Field: Cobia
Rig: ISS Rig 22

Country: Australia

3.65" Powercutter
Tubing Cut Record
14-Mar-2008

Rig: ISS Rig 22
Field: Cobia
Location: Gippsland
Well: CBA F-1
Company: Esso Australia Pty Ltd.

LOCATION			
Gippsland Basin Bass Strait	Permanent Datum:	Mean Sea Level	Elev.: K.B. 32.40 m
	Log Measured From:	Rig Floor	G.L. -79.00 m
	Drilling Measured From:	Drill Floor	D.F. 32.40 m
State: Victoria	Max. Well Deviation 61 deg	Longitude 148° 18' 32.472"E	Latitude 38° 26' 57.528"S

Logging Date	14-Mar-2008		
Run Number	1		
Depth Driller	3408 m		
Schlumberger Depth	3408 m		
Bottom Log Interval	3106 m		
Top Log Interval	3106 m		
Casing Fluid Type	Seawater		
Salinity			
Density	1.02 g/cm3		
Fluid Level			
BIT/CASING/TUBING STRING			
Bit Size	9.875 in		
From	948 m		
To	3286 m		
Casing/Tubing Size	4.500 in		
Weight	12.75 lbm/ft		
Grade	J-55		
From	3101.23 m		
To	3136.43 m		
Maximum Recorded Temperatures			
Logger On Bottom	14-Mar-2008	23:55	
Unit Number	3827	AUSL	
Recorded By	R Sani / C Rowand		
Witnessed By	Mr D Broonfield / Mr B Robinson		

Oil Density				
Water Salinity				
Gas Gravity				
Bo				
Bw				
1/Bg				
Bubble Point Pressure				
Bubble Point Temperature				
Solution GOR				
Maximum Deviation				61 deg
CEMENTING DATA				
Primary/Squeeze				Primary
Casing String No				
Lead Cement Type				
Volume				
Density				
Water Loss				
Additives				
Tail Cement Type				
Volume				
Density				
Water Loss				
Additives				
Expected Cement Top				
Logging Date				
Run Number				
Depth Driller				
Schlumberger Depth				
Bottom Log Interval				
Top Log Interval				
Casing Fluid Type				
Salinity				
Density				
Fluid Level				
BIT/CASING/TUBING STRING				
Bit Size				
From				
To				
Casing/Tubing Size				
Weight				
Grade				
From				
To				
Maximum Recorded Temperatures				
Logger On Bottom		Time		
Unit Number	Location			
Recorded By				
Witnessed By				

DEPTH SUMMARY LISTING

Depth System Equipment

Depth Control Parameters	
Depth (m)	0.0
Depth (m)	0.5
Depth (m)	1.0
Depth (m)	1.5
Depth (m)	2.0
Depth (m)	2.5
Depth (m)	3.0
Depth (m)	3.5
Depth (m)	4.0
Depth (m)	4.5
Depth (m)	5.0
Depth (m)	5.5
Depth (m)	6.0
Depth (m)	6.5
Depth (m)	7.0
Depth (m)	7.5
Depth (m)	8.0
Depth (m)	8.5
Depth (m)	9.0
Depth (m)	9.5
Depth (m)	10.0
Depth (m)	10.5
Depth (m)	11.0
Depth (m)	11.5
Depth (m)	12.0
Depth (m)	12.5
Depth (m)	13.0
Depth (m)	13.5
Depth (m)	14.0
Depth (m)	14.5
Depth (m)	15.0
Depth (m)	15.5
Depth (m)	16.0
Depth (m)	16.5
Depth (m)	17.0
Depth (m)	17.5
Depth (m)	18.0
Depth (m)	18.5
Depth (m)	19.0
Depth (m)	19.5
Depth (m)	20.0
Depth (m)	20.5
Depth (m)	21.0
Depth (m)	21.5
Depth (m)	22.0
Depth (m)	22.5
Depth (m)	23.0
Depth (m)	23.5
Depth (m)	24.0
Depth (m)	24.5
Depth (m)	25.0
Depth (m)	25.5
Depth (m)	26.0
Depth (m)	26.5
Depth (m)	27.0
Depth (m)	27.5
Depth (m)	28.0
Depth (m)	28.5
Depth (m)	29.0
Depth (m)	29.5
Depth (m)	30.0
Depth (m)	30.5
Depth (m)	31.0
Depth (m)	31.5
Depth (m)	32.0
Depth (m)	32.5
Depth (m)	33.0
Depth (m)	33.5
Depth (m)	34.0
Depth (m)	34.5
Depth (m)	35.0
Depth (m)	35.5
Depth (m)	36.0
Depth (m)	36.5
Depth (m)	37.0
Depth (m)	37.5
Depth (m)	38.0
Depth (m)	38.5
Depth (m)	39.0
Depth (m)	39.5
Depth (m)	40.0
Depth (m)	40.5
Depth (m)	41.0
Depth (m)	41.5
Depth (m)	42.0
Depth (m)	42.5
Depth (m)	43.0
Depth (m)	43.5
Depth (m)	44.0
Depth (m)	44.5
Depth (m)	45.0
Depth (m)	45.5
Depth (m)	46.0
Depth (m)	46.5
Depth (m)	47.0
Depth (m)	47.5
Depth (m)	48.0
Depth (m)	48.5
Depth (m)	49.0
Depth (m)	49.5
Depth (m)	50.0
Depth (m)	50.5
Depth (m)	51.0
Depth (m)	51.5
Depth (m)	52.0
Depth (m)	52.5
Depth (m)	53.0
Depth (m)	53.5
Depth (m)	54.0
Depth (m)	54.5
Depth (m)	55.0
Depth (m)	55.5
Depth (m)	56.0
Depth (m)	56.5
Depth (m)	57.0
Depth (m)	57.5
Depth (m)	58.0
Depth (m)	58.5
Depth (m)	59.0
Depth (m)	59.5
Depth (m)	60.0
Depth (m)	60.5
Depth (m)	61.0
Depth (m)	61.5
Depth (m)	62.0
Depth (m)	62.5
Depth (m)	63.0
Depth (m)	63.5
Depth (m)	64.0
Depth (m)	64.5
Depth (m)	65.0
Depth (m)	65.5
Depth (m)	66.0
Depth (m)	66.5
Depth (m)	67.0
Depth (m)	67.5
Depth (m)	68.0
Depth (m)	68.5
Depth (m)	69.0
Depth (m)	69.5
Depth (m)	70.0
Depth (m)	70.5
Depth (m)	71.0
Depth (m)	71.5
Depth (m)	72.0
Depth (m)	72.5
Depth (m)	73.0
Depth (m)	73.5
Depth (m)	74.0
Depth (m)	74.5
Depth (m)	75.0
Depth (m)	75.5
Depth (m)	76.0
Depth (m)	76.5
Depth (m)	77.0
Depth (m)	77.5
Depth (m)	78.0

Depth Control Remarks	
-----------------------	--

1. Log correlated to Tubing Tally dated 6-Mar-2008
2. IDW used as primary depth control.
3. Z Chart used as secondary depth control.

DISCLAIMER

THE USE OF AND RELIANCE UPON THIS RECORDED-DATA BY THE HEREIN NAMED COMPANY (AND ANY OF ITS AFFILIATES, PARTNERS, REPRESENTATIVES, AGENTS, CONSULTANTS AND EMPLOYEES) IS SUBJECT TO THE TERMS AND CONDITIONS AGREED UPON BETWEEN SCHLUMBERGER AND THE COMPANY, INCLUDING: (a) RESTRICTIONS ON USE OF THE RECORDED-DATA; (b) DISCLAIMERS AND WAIVERS OF WARRANTIES AND REPRESENTATIONS REGARDING COMPANY'S USE OF AND RELIANCE UPON THE RECORDED-DATA; AND (c) CUSTOMER'S FULL AND SOLE RESPONSIBILITY FOR ANY INFERENCE DRAWN OR DECISION MADE IN CONNECTION WITH THE USE OF THIS RECORDED-DATA.

OTHER SERVICES1	
OS1:	
OS2:	
OS3:	
OS4:	
OS5:	

REMARKS: RUN NUMBER 1
Log correlated to Tubing Tally provided by client.

Log correlated to Tubing Tally provided by client.

Objectives: RIH with a 3.65" Power Cutter. Cut 4-1/2" tubing joint at approximately 3106.0m MDKB.

Tubing cutter is fired using SECURE.

Toolstring ran with ERS.

--

Powercutter cutting depth: 3106.0 m MDKB

CCL to Top Shot: 5.25 m

CCL Stop Depth: 3100.75 m MDKB

Schlumberger Crews:

Days: S Kiss & A Hall

Nights: P Battams & C Harris

SERVICE ORDER #: AUSL08589249

EQUIPMENT DESCRIPTION

RUN 1

SURFACE EQUIPMENT

WITM (SHM)

DOWNHOLE EQUIPMENT

MH-22 6.12
MH-22



AH-38 5.64



CCL-XA 5.56
CCL-XA 7202 Tension CCL — TOOL ZERO



ERS 5.10
ERS-E 1118



AH-PCCL-LA 4.72
AH-PCCL-LA 7353

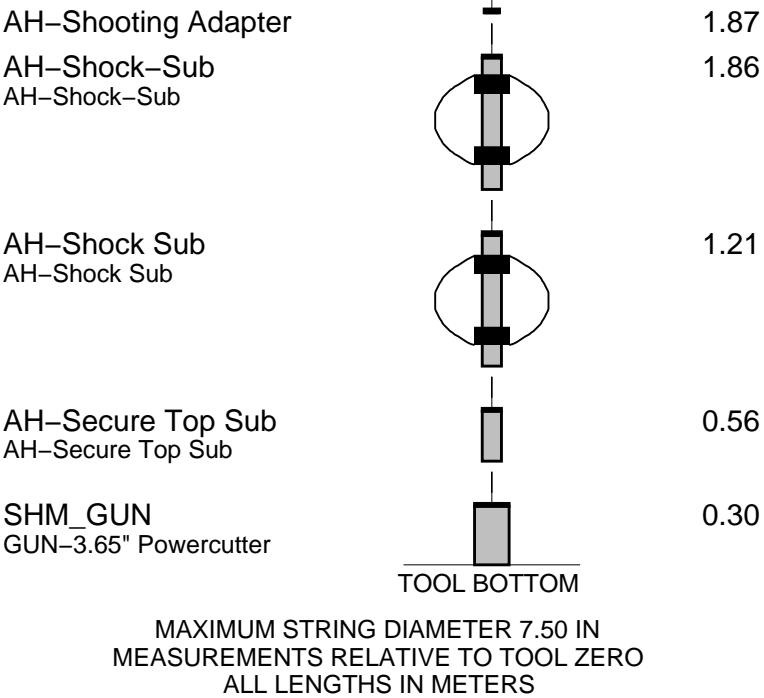


EQF-46 4.26
EQF-46 3002

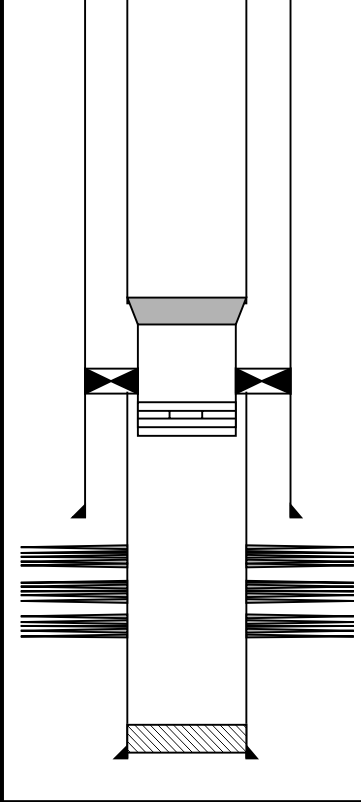


AH-WPSA-BA 2.43
AH-WPSA-BA 1001





Production String	(in)			(m)	Well Schematic	(m)			(in)	Casing String
	OD	ID	MD			MD	OD	ID		
Tubing Tubing Hanger	5.500 9.625	5.500	18.4 18.4			12.7 18.0 18.0	13.375 9.625 13.375	9.625		Casing String Casing String Liner Hanger
SSSV	5.500		449.1							
						948.0	13.375			Casing Shoe
Side Pocket Mandrel	5.500		1207.0							
Side Pocket Mandrel	5.500		1552.3							
Landing Nipple	5.500		1570.6							

Tubing Bottom	5.500		3101.0				
Crossover Joint	5.500	4.500	3101.0				
Tubing	4.500		3101.2				
Packer	9.625	4.500	3113.2		3134.7	5.500	Casing String
Nipple	4.500		3126.5				
Tubing Bottom	4.500		3136.4				
					3286.0	9.625	Casing Shoe
					3359.5		Perforation Zone
					3363.3		Perforation Zone
					3380.0		Perforation Zone
					3453.0		PBTD
					3539.2	5.500	Casing Shoe



Job Event Summary

MAXIS Field Log

Schlumberger Job Event Summary

	Time	Elapsed Time	Depth (M)	File
Simulated Log	14-Mar-2008 22:05	000:05		PERFO_029LUP
Log Pass (up)	15-Mar-2008 0:38	000:07	3119.5 - 3061.3	PERFO_036LUP
Log Pass (up)	15-Mar-2008 1:00	000:13	3119.9 - 3060.3	PERFO_038LUP

PERFO2 Operational Summary Listing

Device Status Req Depth (M) Obs Depth (M) Time Used

GUN1 Used 3106.0 3106.0 Sat Mar 15 01:07:20 2008

Company: Esso Australia Pty Ltd.

Well: CBA F-1

Output DLIS Files

DEFAULT PERFO_038LUP FN:36 PRODUCER 15-Mar-2008 01:00 3119.9 M 3060.3 M

OP System Version: 16C0-147
MCMSHM_GUN 16C0-147
CCL-XA 16C0-147 ERS 16C0-147

PIP SUMMARY

└─ Casing Collars

Time Mark Every 60 S

Raw Casing Collar Locator (RCCL)

-3 (----) 17

Casing Collar Locator (CCL)

-19 (----) 1

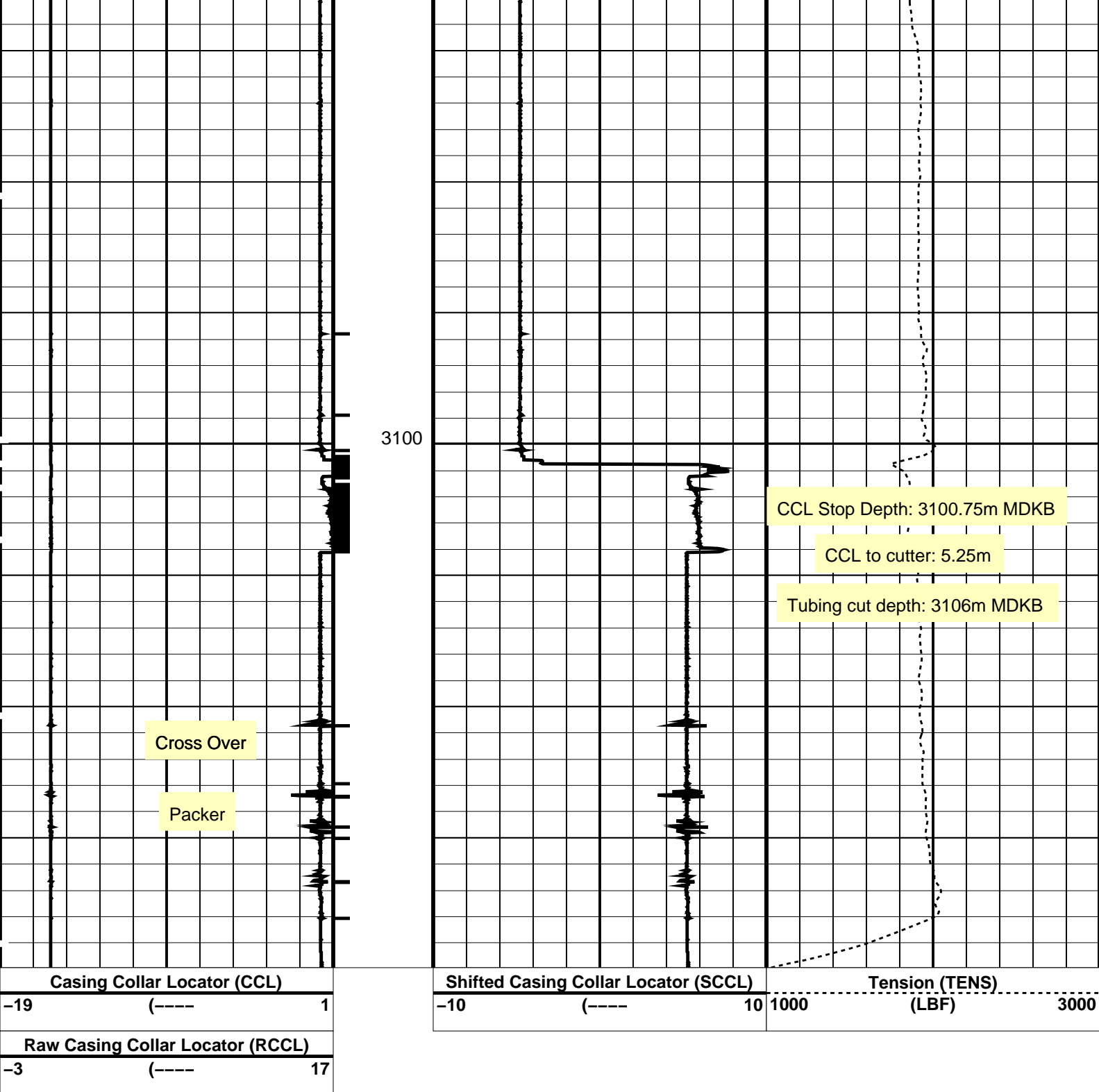
Shifted Casing Collar Locator (SCCL)

-10 (----) 10

Tension (TENS)

(LBF) 1000 3000

3075



PIP SUMMARY

Time Mark Every 60 S

Casing Collars

Parameters		
DLIS Name	Description	Value
CCL-XA: Casing Collar Locator		
CCLD	CCL reset delay	12 IN
CCLT	CCL Detection Level	0.3 V

Format: PERFO Vertical Scale: 1:200 Graphics File Created: 15-Mar-2008 01:00

Output DLIS Files

DEFAULTPERFO_038LUPFN:36PRODUCER15-Mar-2008 01:00

Schlumberger

3.65" Powercutter
Correlation Pass

MAXIS Field Log

Company: Esso Australia Pty Ltd.

Well: CBA F-1

Output DLIS Files

DEFAULTPERFO_036LUPFN:34PRODUCER15-Mar-2008 00:383119.5 M3061.3 M

OP System Version: 16C0-147

MCM

SHM_GUN16C0-147ERS16C0-147

CCL-XA16C0-147

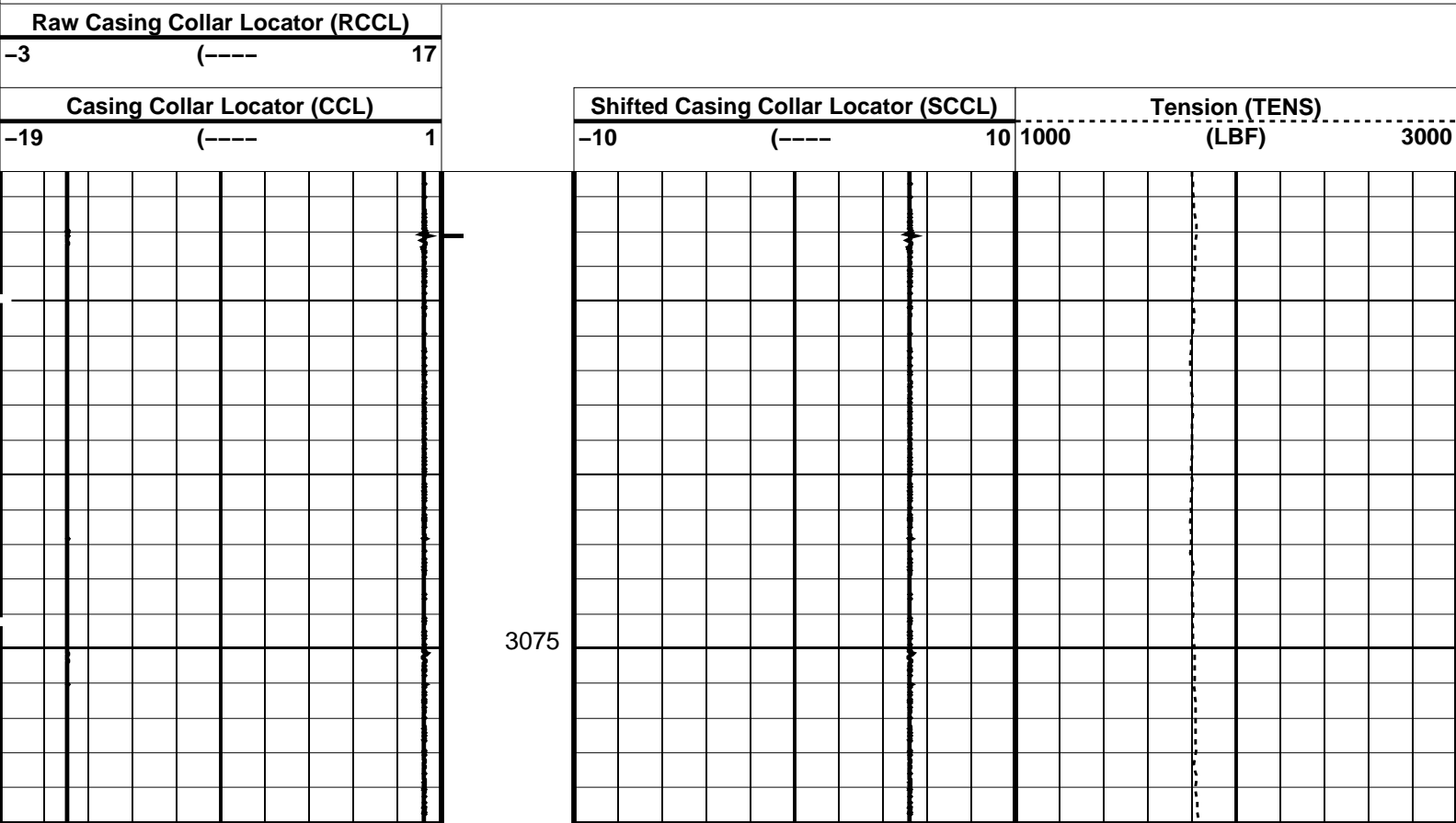
Changed Parameter Summary

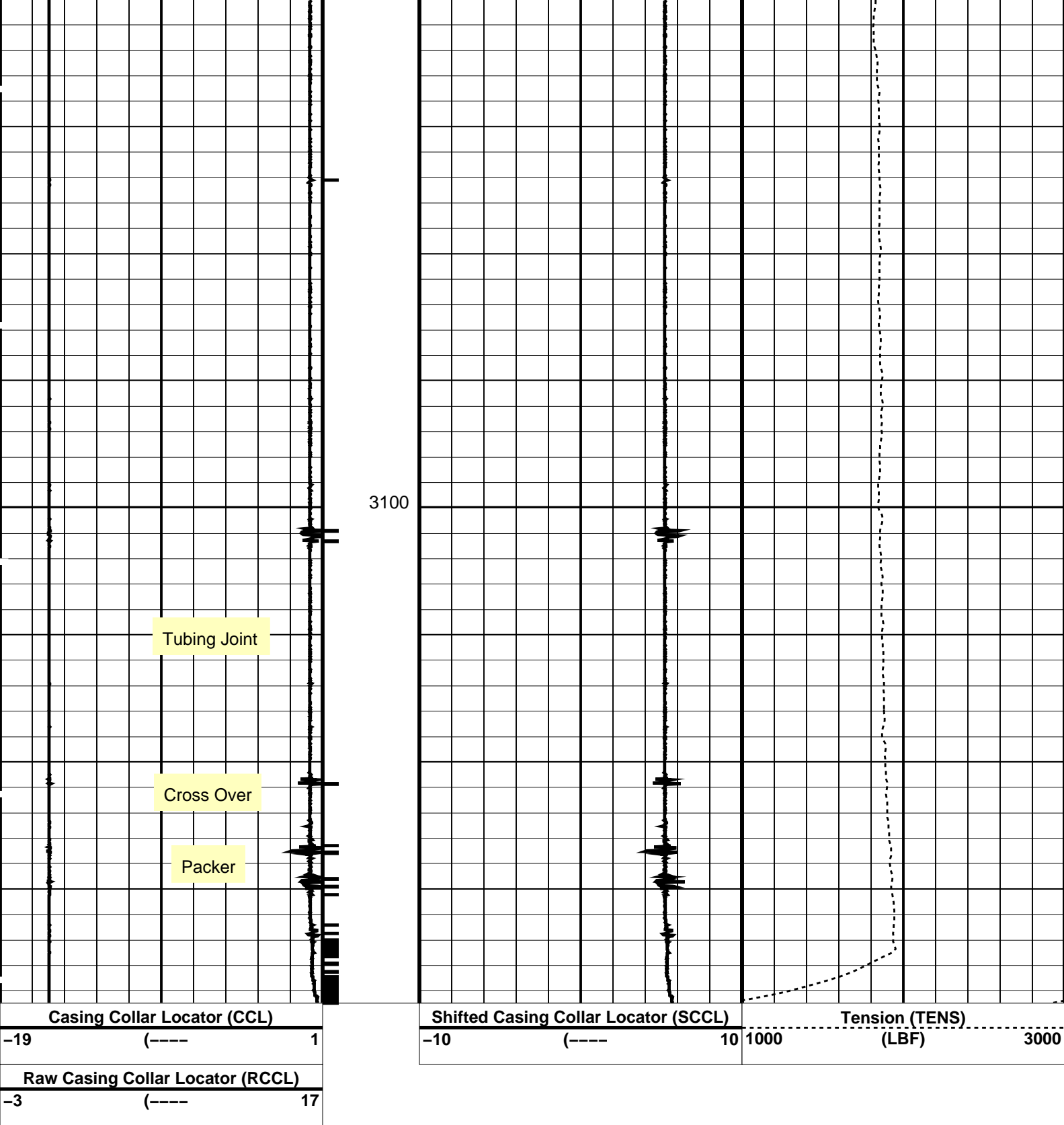
DLIS Name	New Value	Previous Value	Depth & Time
CCLT	0.7 V	0.3 V	3084.9 00:43:13
	0.3 V	0.7 V	3068.6 00:44:58

PIP SUMMARY

Time Mark Every 60 S

Casing Collars





PIP SUMMARY		
Time Mark Every 60 S		
Casing Collars		

Parameters		
DLIS Name	Description	Value
CCLD	CCL-XA: Casing Collar Locator	
CCLT	CCL reset delay	12 IN
	CCL Detection Level	0.3 V

SHM_GUN CCL-XA		16C0-147 16C0-147	MCM ERS	16C0-147
Output DLIS Files				
DEFAULT	PERFO_036LUP	FN:34	PRODUCER	15-Mar-2008 00:38
<div> <div>Company: Esso Australia Pty Ltd.</div> <div>Schlumberger</div> <div> Well: CBA F-1 Field: Cobia Rig: ISS Rig 22 Country: Australia </div> </div>				
<div> <div>3.65" Powercutter Tubing Cut Record 14-Mar-2008</div> </div>				