

Company: Esso Australia Pty Ltd.

Well: W-18a
Field: West Kingfish
Rig : Prod4 / Ausl

Country: Australia

Prod4 / Ausl
West Kingfish
Gippsland
W-18a
Esso Australia Pty Ltd.

2 1/8" Phased Powerjet MWPT – GR Perforation Record		LOCATION	
		Gippsland	Elev.: K.B. 33.43 m
		Basin	G.L. -76.13 m
		Bass Strait	D.F. 33.43 m
Permanent Datum: M.S.L.		Elev.: 0 m	
Log Measured From: D.F.		33.4 m above Perm. Datum	
Drilling Measured From: D.F.			
State: Victoria	Max. Well Deviation 36 deg	Longitude 148 06'15.1"E	Latitude 038 35'40.7"S
Logging Date 6-Apr-2008			
Run Number	One		
Depth Driller	2656 m		
Schlumberger Depth	2650 m		
Bottom Log Interval	2650 m		
Top Log Interval	2590 m		
Casing Fluid Type	Production Fluids		
Salinity			
Density			
Fluid Level			
BIT/CASING/TUBING STRING			
Bit Size	8.000 in		
From			
To			
Casing/Tubing Size	7.000 in		
Weight	26 lbm/ft		
Grade	L-80		
From	11.7 m		
To	2696.6 m		
Maximum Recorded Temperatures 226 degf 14:30			
Logger On Bottom	6-Apr-2008		
Unit Number	889	Prod4 / Ausl	
Recorded By	G Wright.		
Witnessed By	B White.		

			Run 1
PVT DATA			
Oil Density			
Water Salinity			
Gas Gravity			
Bo			
Bw			
1/Bg			
Bubble Point Pressure			
Bubble Point Temperature			
Solution GOR			
Maximum Deviation	36 deg		
CEMENTING DATA			
Primary/Squeeze	Primary		
Casing String No			
Lead Cement Type			
Volume			
Density			
Water Loss			
Additives			
Tail Cement Type			
Volume			
Density			
Water Loss			
Additives			
Expected Cement Top			
Logging Date			
Run Number			
Depth Driller			
Schlumberger Depth			
Bottom Log Interval			
Top Log Interval			
Casing Fluid Type			
Salinity			
Density			
Fluid Level			
BIT/CASING/TUBING STRING			
Bit Size			
From			
To			
Casing/Tubing Size			
Weight			
Grade			
From			
To			
Maximum Recorded Temperatures			
Logger On Bottom	Time		
Unit Number	Location		
Recorded By			
Witnessed By			

DEPTH SUMMARY LISTING

Date Created: 3-APR-2008 8:36:45

Depth System Equipment

Depth Measuring Device		Tension Device		Logging Cable	
Type:	IDW-EB	Type:	PSDS/OSDS	Type:	2-32ZT
Serial Number:	6373	Serial Number:	325357	Serial Number:	27244
Calibration Date:	04-Jan-07	Calibration Date:	03-Apr-2008	Length:	6409.94 M
Calibrator Serial Number:	9	Calibrator Serial Number:	1174		
Calibration Cable Type:	2-32ZT	Calibration Gain:	0.91	Conveyance Method:	Wireline
Wheel Correction 1:	-2	Calibration Offset:	341.00	Rig Type:	Rigless
Wheel Correction 2:	-4				

Depth Control Parameters

Log Sequence:	Subsequent Log In the Well
	.

Depth Control Remarks	
-----------------------	--

1. IDW-EB 6373 used as the primary depth control.
2. Z-Chart used as back-up system.

DISCLAIMER

THE USE OF AND RELIANCE UPON THIS RECORDED-DATA BY THE HEREIN NAMED COMPANY (AND ANY OF ITS AFFILIATES, PARTNERS, REPRESENTATIVES, AGENTS, CONSULTANTS AND EMPLOYEES) IS SUBJECT TO THE TERMS AND CONDITIONS AGREED UPON BETWEEN SCHLUMBERGER AND THE COMPANY, INCLUDING: (a) RESTRICTIONS ON USE OF THE RECORDED-DATA; (b) DISCLAIMERS AND WAIVERS OF WARRANTIES AND REPRESENTATIONS REGARDING COMPANY'S USE OF AND RELIANCE UPON THE RECORDED-DATA; AND (c) CUSTOMER'S FULL AND SOLE RESPONSIBILITY FOR ANY INFERENCE DRAWN OR DECISION MADE IN CONNECTION WITH THE USE OF THIS RECORDED-DATA.

OTHER SERVICES1
OS1: None

REMARKS: RUN NUMBER 1
Log correlated to Petrophysical Analysis composite supplied with program

Log correlated to Petrophysical Analysis composite supplied with program.
Maximum well deviation = 36 degree's at 1282m MDKB.

This well was perforated with 2 1/8" 45 deg phased powerjet

at 6 spt.
Interval perforated = 2644m to 2644.8m MDKB.

Prior to firing the gun : SBHP = 3146 psia, SBHT = 225 degf.

No noticeable change was apparent after the gun was fired.
--

Following a 12 hr flow test the well had improved by approximately 70 kl/d oil.

Crew : J Annear,P Lawrence,A McLellan.

RUN 1				
SERVICE ORDER #:		AusI07509097		
PROGRAM VERSION:		15C0-309		
FLUID LEVEL:				
LOGGED INTERVAL	START	STOP		

EQUIPMENT DESCRIPTION

RUN 1

SURFACE EQUIPMENT

MWPM-AA 3008

DOWNHOLE EQUIPMENT

SWBS-B 787

10.30

SWBS-B 786

9.62

SWBS-B 788

8.93

SWHS-A 759

8.25

AH-124 7002

7.92

MWPG-AA 24029

7.81

MWGH-AA 69

MWPG GR

2.41

MWPH-AA 74

6.84

MWPS-AA 74

CCL

SMWP Pres

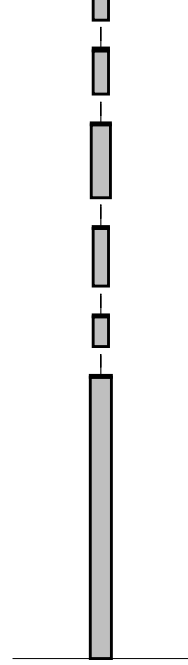
SMWP Temp

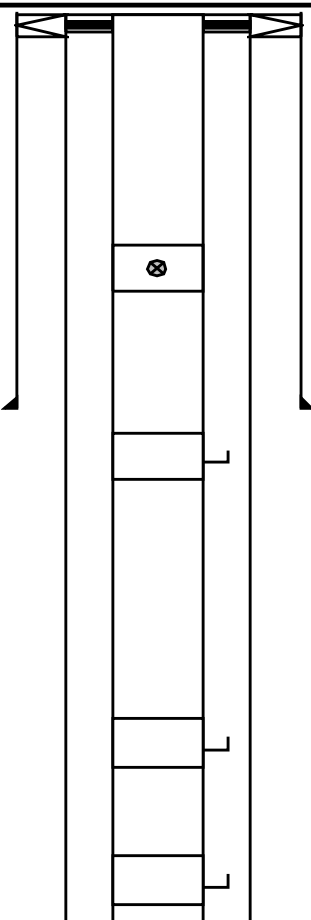
Tension

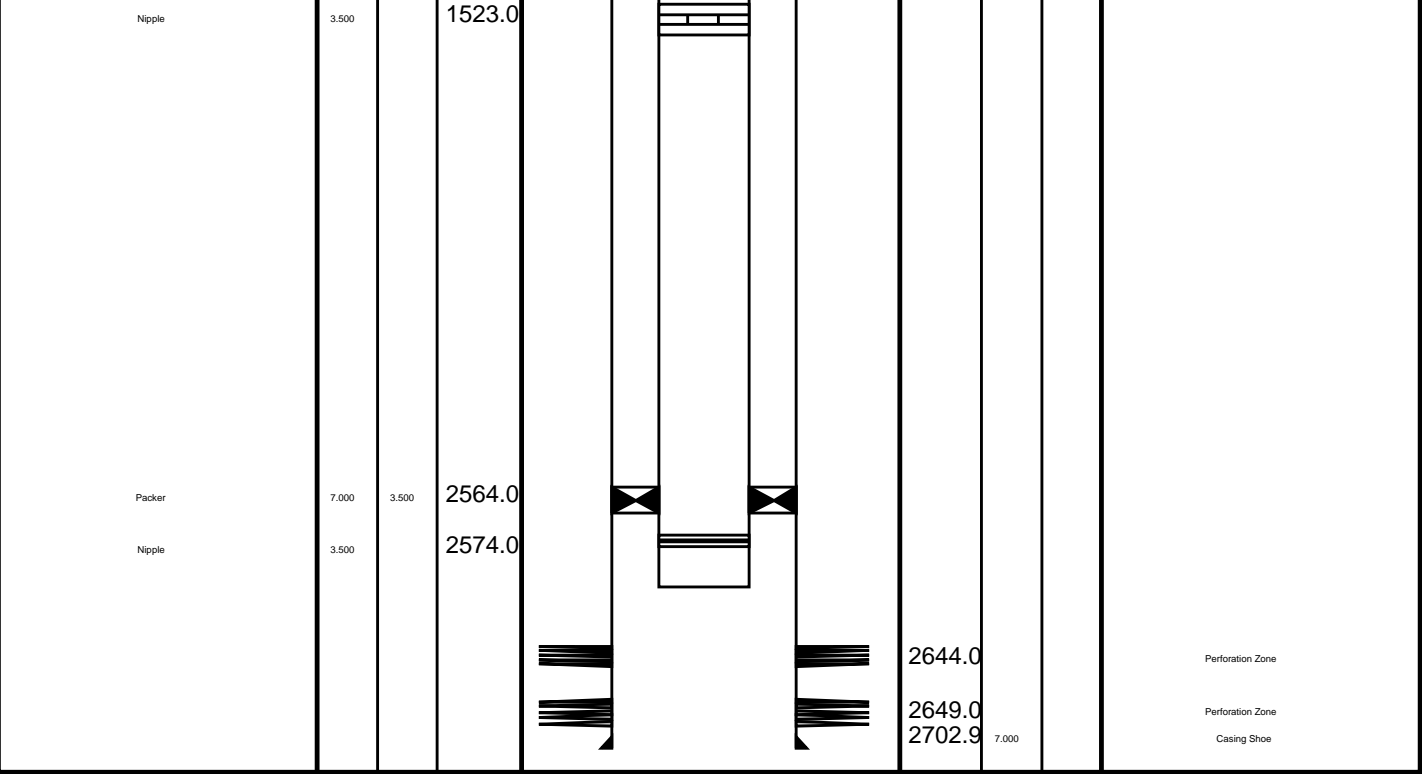
TOOL ZERO

Flex Joint 41

4.02

ROX Joint 11		
SAH-G 1035		3.56
MPD-MB 336		3.23
ESIC 15042002		2.69
Firing Head 1		2.26
GUN-2 1/8" Phased Powerjet 1		2.03
TOOL BOTTOM MAXIMUM STRING DIAMETER 2.13 IN MEASUREMENTS RELATIVE TO TOOL ZERO ALL LENGTHS IN METERS		

Production String	(in)		(m)	Well Schematic	(m)	(in)		Casing String
	OD	ID	MD		MD	OD	ID	
Tubing	3.500		11.7		11.7	7.000		Casing String
Tubing Hanger	7.000	3.500	10.0		11.7	10.750	7.000	Liner Hanger
Shutin Valve	3.500		448.0					
Gas Lift Mandrel	3.500		773.0		651.0	10.750		Casing Shoe
Gas Lift Mandrel	3.500		1269.0					
Gas Lift Mandrel	3.500		1507.0					



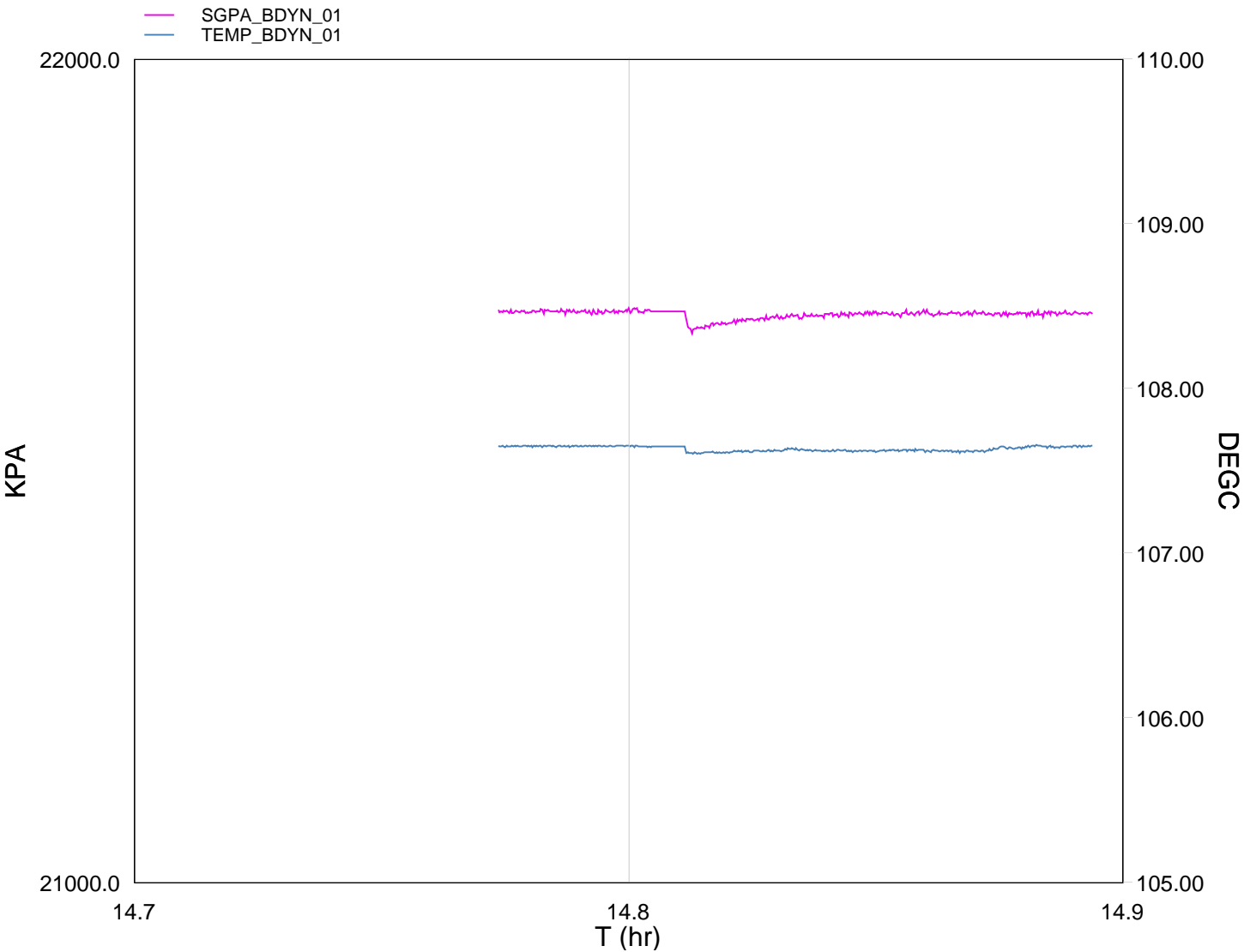
Job Event Summary
06-Apr-2008

MAXIS Field Log

Schlumberger Job Event Summary

	Time	Elapsed Time	Depth (M)	File
Log Pass (down)	6-Apr-2008 14:05	000:13	1116.5 – 2654.5	PERFO_007LDP
Log Pass (up)	6-Apr-2008 14:18	000:06	2654.5 – 2584.7	PERFO_008LUP
Log Pass (up)	6-Apr-2008 14:29	000:06	2649.8 – 2612.6	PERFO_009LUP
Log Pass (up)	6-Apr-2008 14:38	000:03	2649.5 – 2640.6	PERFO_010LUP
Log Pass (up)	6-Apr-2008 14:43	000:16	2649.3 – 2585.0	PERFO_012LUP
Station Log	6-Apr-2008 14:46	000:07	2640.6 – 1.1	PERFO_013LTP
Log Pass (up)	6-Apr-2008 15:00	000:02	2577.5 – 2517.0	PERFO_014LUP

MAXIS Field Log



TIME	DEGF	PSIA
2910.0	225.77	3146.488
2880.0	225.76	3146.162
2850.0	225.72	3146.363
2820.0	225.72	3146.126
2790.0	225.72	3145.454
2760.0	225.72	3146.204
2730.0	225.72	3145.644
2700.0	225.73	3145.761
2670.0	225.72	3144.404
2640.0	225.72	3142.162

2640.0	225.70	3143.446
2610.0	225.77	3146.479
2580.0	225.77	3146.425
2550.0	225.77	3146.294
2520.0	225.77	3146.313
2490.0	225.77	3146.413



GUN # 1
Shooting Pass

MAXIS Field Log

Company: Esso Australia Pty Ltd.

Well: W-18a

Output DLIS Files

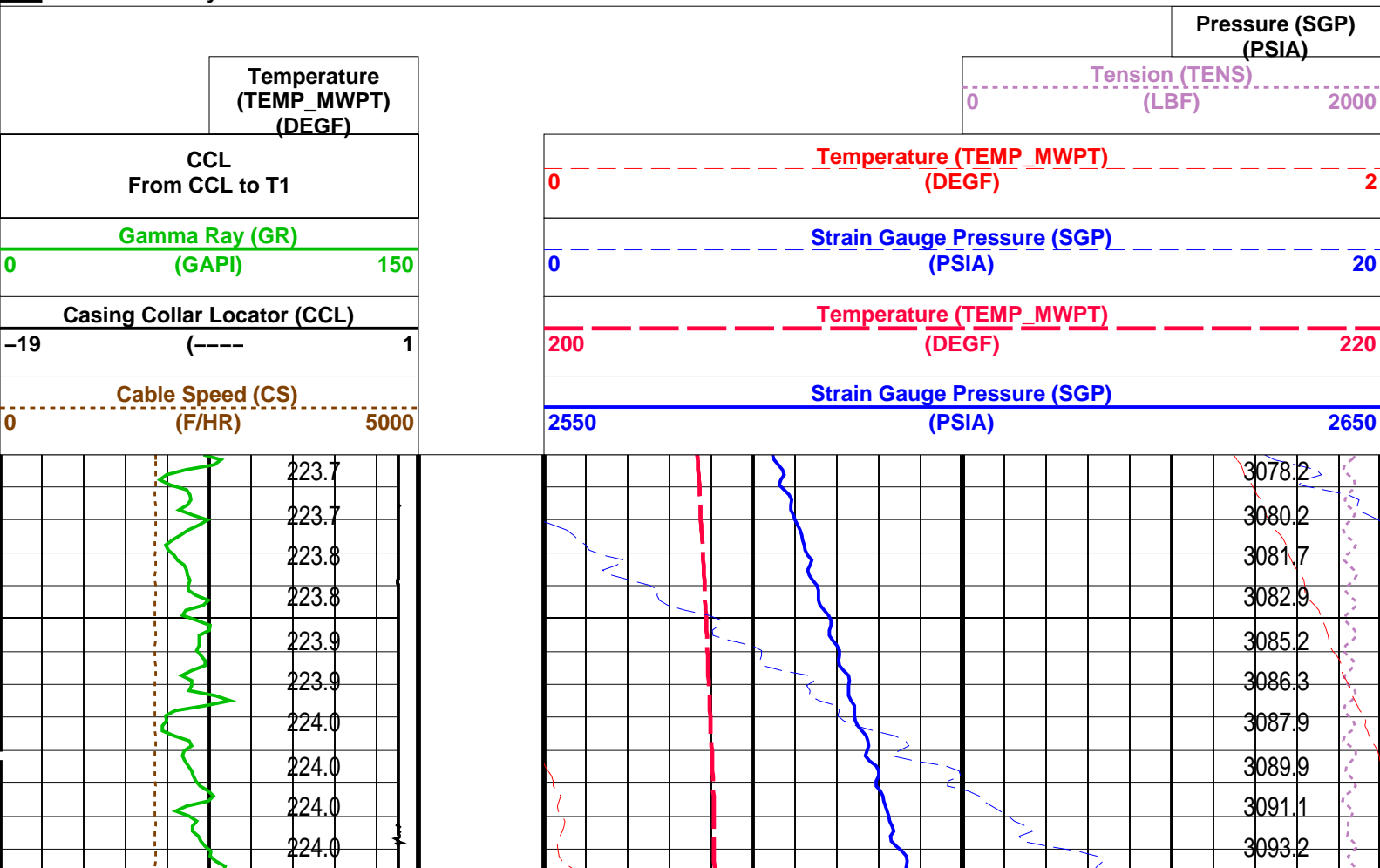
DEFAULT PERFO_012LUP FN:11 PRODUCER 06-Apr-2008 14:43 2649.3 M 2585.0 M

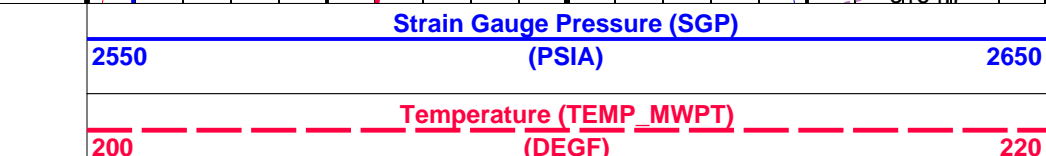
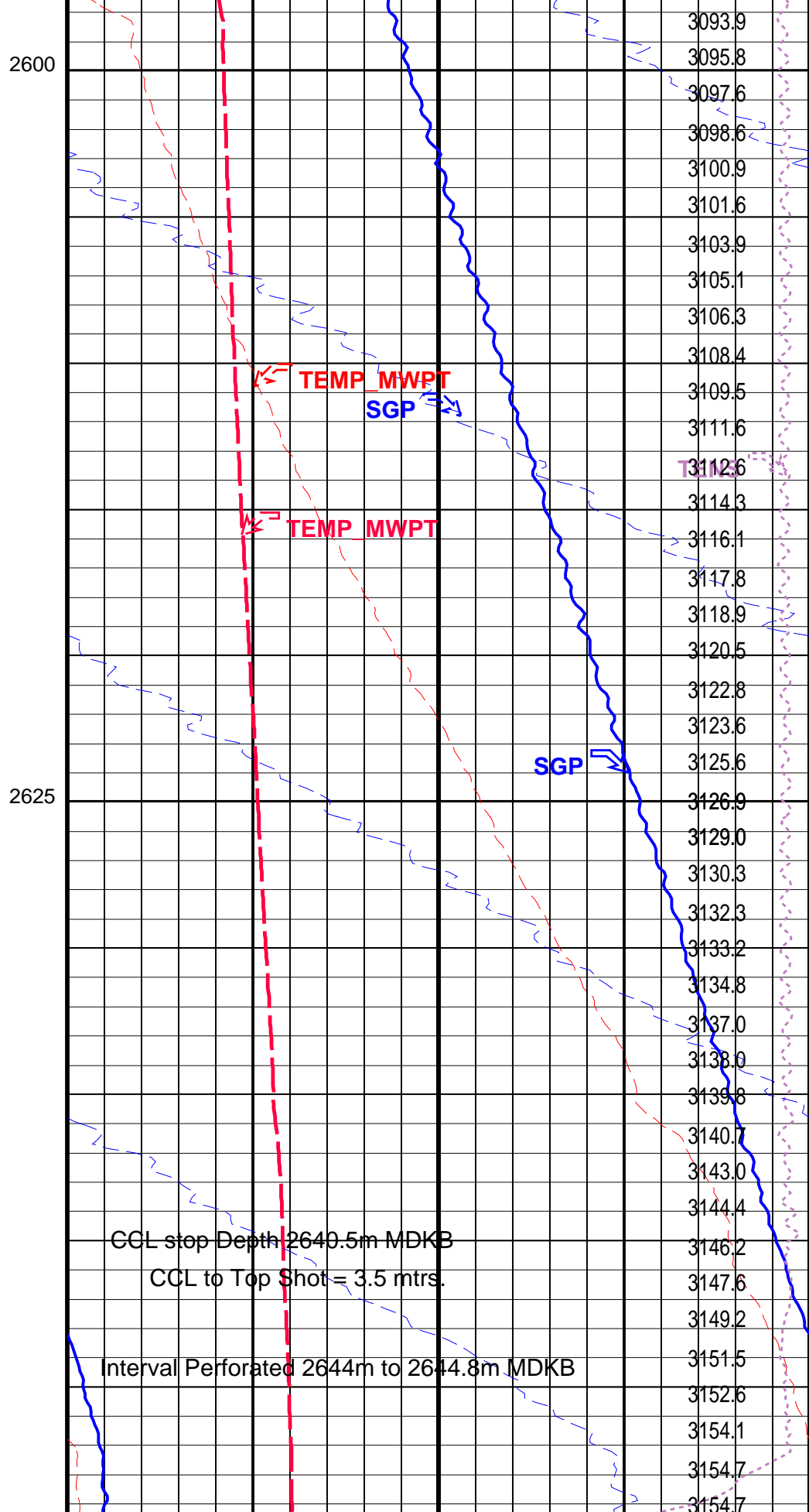
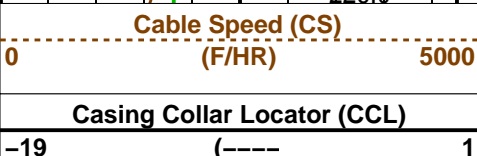
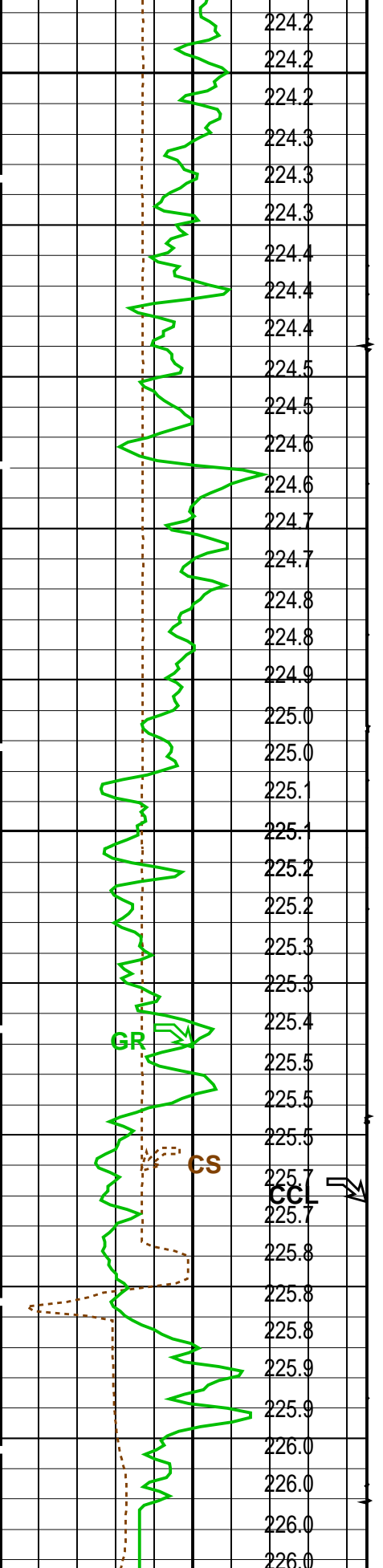
OP System Version: 15C0-309
MCM

MWP_GUN SRPC-3546-Q1_2008_OP15 MWPT-CA SRPC-3546-Q1_2008_OP15
MWGT-AA SRPC-3546-Q1_2008_OP15

PIP SUMMARY

Time Mark Every 60 S





Gamma Ray (GR) (GAPI)150		Strain Gauge Pressure (SGP) (PSIA)20	
CCL From CCL to T1		Temperature (TEMP_MWPT) (DEGF)2	
Temperature (TEMP_MWPT) (DEGF)		Tension (TENS) (LBF)2000	
		Pressure (SGP) (PSIA)	


PIP SUMMARY			
Time Mark Every 60 S			

Parameters			
DLIS Name	Description	Value	
MWPT-CA: MEASUREMENT WHILE PERFORATING TOOL			
DEVI_FL_CORR	Deviation Angle for Flow Line Correction	0	DEG
FLD	Flow Line Density	1	G/C3
MWPT_NULL_SOURCE	MWPT NULL Temperature Source	TEMS	
MWPT_NULL_TEMP	MWPT NULL Temperature	0.0	DEGC

Format: MWP	Vertical Scale: 1:200	Graphics File Created: 06-Apr-2008 14:43
-------------	-----------------------	--

OP System Version: 15C0-309 MCM			
MWP_GUN	SRPC-3546-Q1_2008_OP15	MWPT-CA	SRPC-3546-Q1_2008_OP15
MWGT-AA	SRPC-3546-Q1_2008_OP15		

Output DLIS Files			
DEFAULT	PERFO_012LUP	FN:11	PRODUCER 06-Apr-2008 14:43

		<div>Gamma-Ray Survey 2650m to 2590m MDKB</div>	
<div>MAXIS Field Log</div>			

Company: Esso Australia Pty Ltd.	Well: W-18a
----------------------------------	-------------

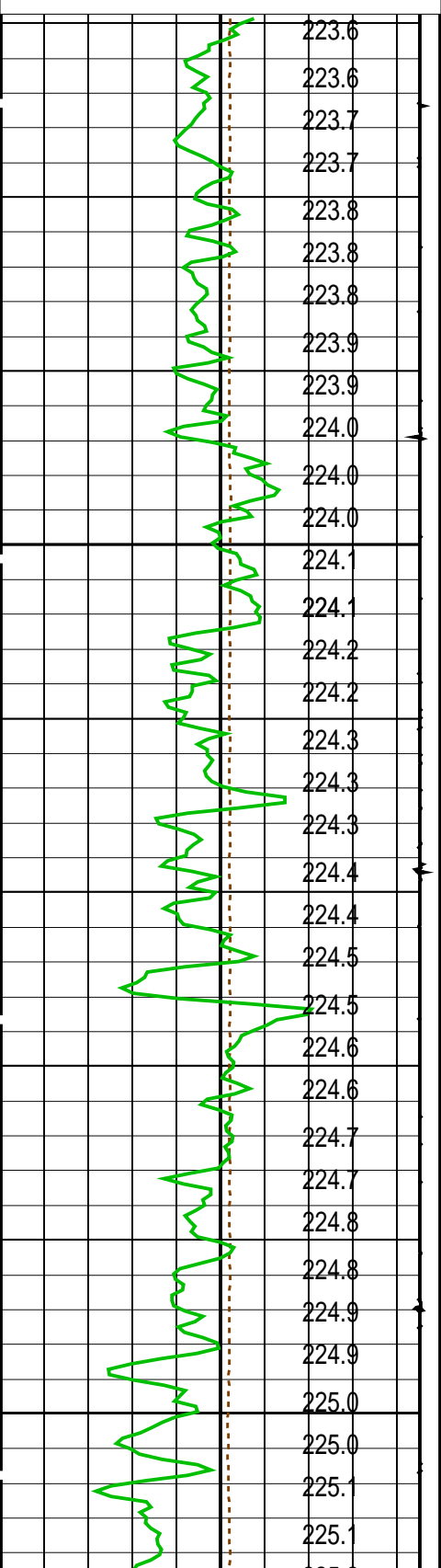
Input DLIS Files					
DEFAULT	PERFO_008LUP	FN:7	PRODUCER	06-Apr-2008 14:18	2654.5 M 2584.7 M
Output DLIS Files					
DEFAULT	PERFO_016PUP	FN:15	PRODUCER	06-Apr-2008 15:09	2654.0 M 2584.7 M

OP System Version: 15C0-309 MCM			
MWP_GUN	SRPC-3546-Q1_2008_OP15	MWPT-CA	SRPC-3546-Q1_2008_OP15
MWGT-AA	SRPC-3546-Q1_2008_OP15		

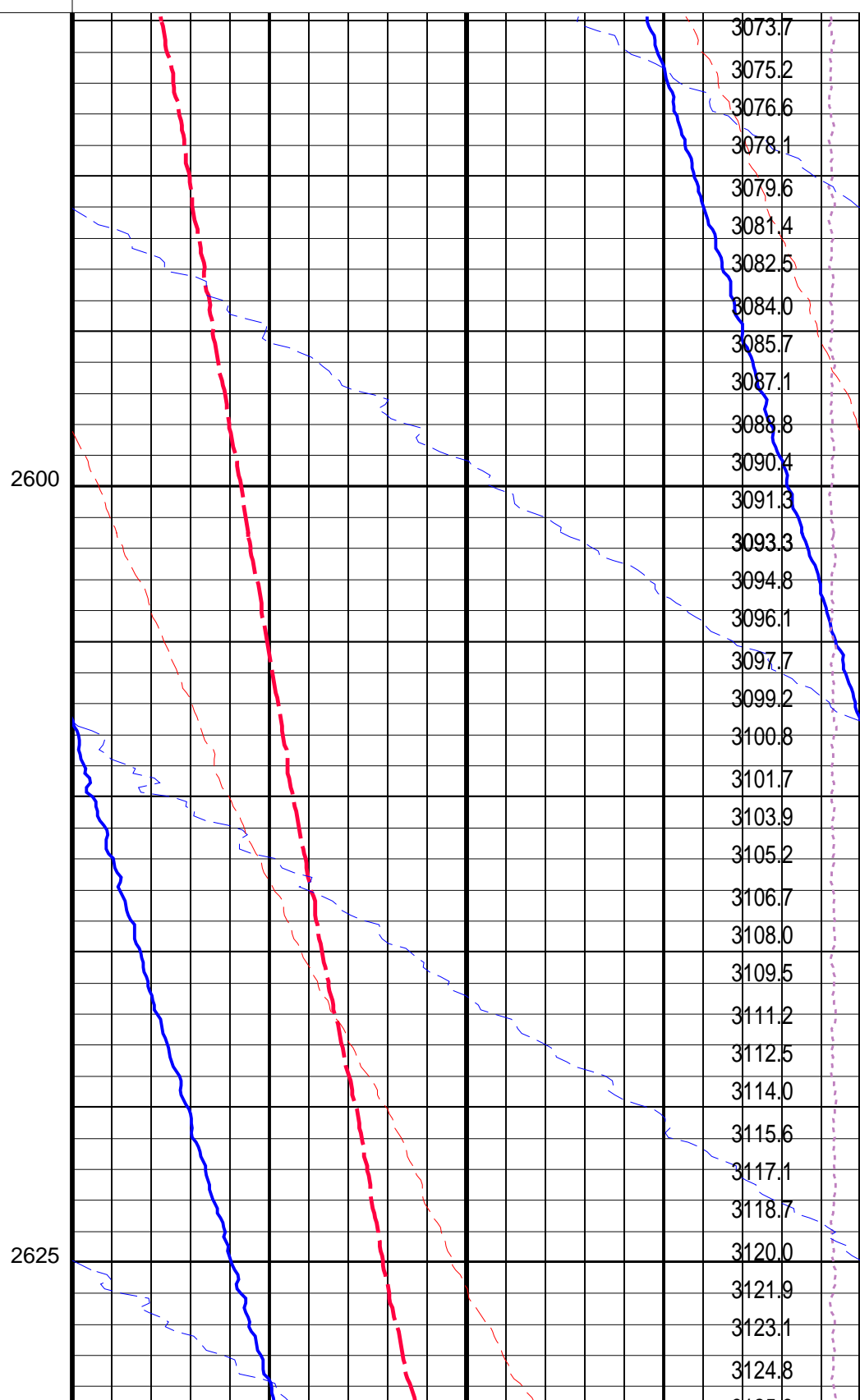
PIP SUMMARY			
Time Mark Every 60 S			

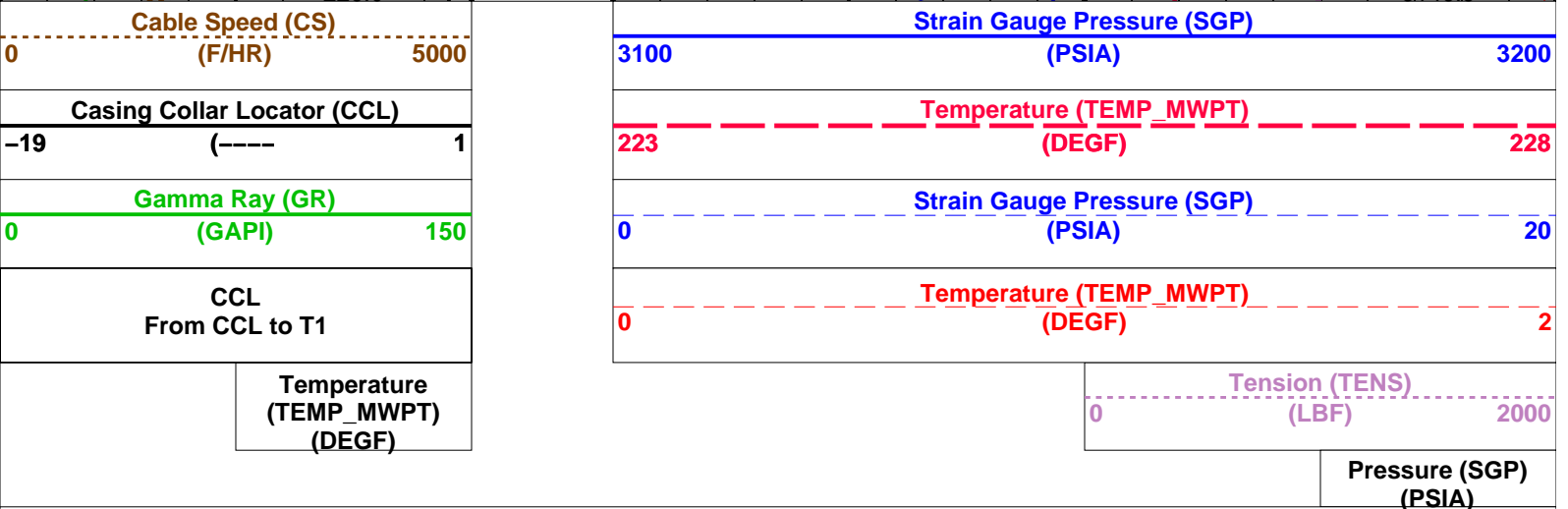
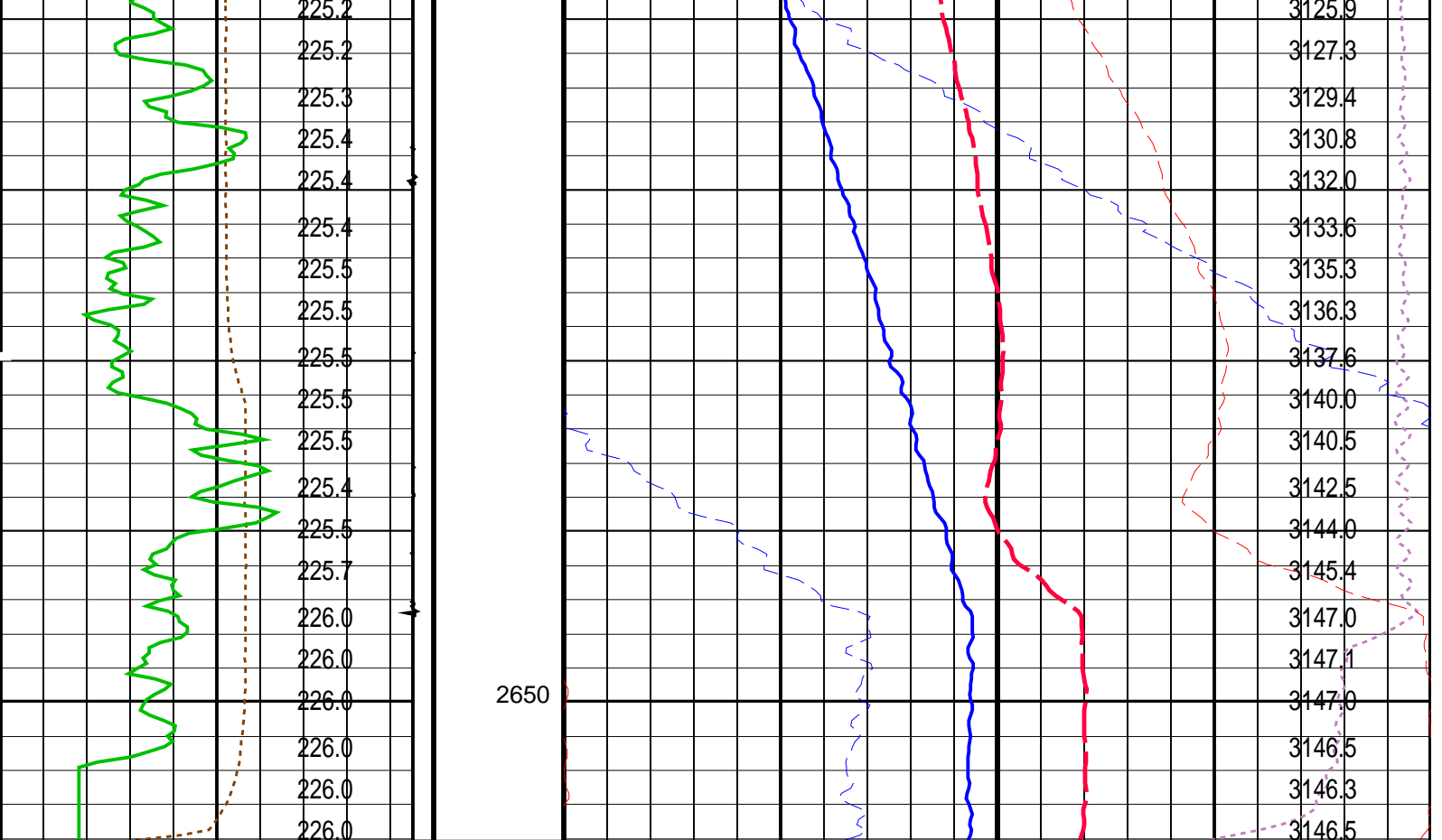
Temperature		Tension (TENS)	
		Pressure (SGP) (PSIA)	

	(TEMP_MWPT) (DEGF)
CCL From CCL to T1	
Gamma Ray (GR) (GAPI)	
0	150
Casing Collar Locator (CCL)	
-19	1
Cable Speed (CS) (F/HR)	
0	5000



0	(LBF)	2000
Temperature (TEMP_MWPT) (DEGF)		
0		2
Strain Gauge Pressure (SGP) (PSIA)		
0		20
Temperature (TEMP_MWPT) (DEGF)		
223		228
Strain Gauge Pressure (SGP) (PSIA)		
3100		3200





PIP SUMMARY

Time Mark Every 60 S

Parameters		
DLIS Name	Description	Value
MWPT-CA: MEASUREMENT WHILE PERFORATING TOOL		
DEVI_FL_CORR	Deviation Angle for Flow Line Correction	0 DEG
FLD	Flow Line Density	1 G/C3
MWPT_NULL_SOURCE	MWPT NULL Temperature Source	TEMS
MWPT_NULL_TEMP	MWPT NULL Temperature	0.0 DEGC
System and Miscellaneous		
DO	Depth Offset for Playback	-0.4 M
PP	Playback Processing	NORMAL

Format: MWP Vertical Scale: 1:200 Graphics File Created: 06-Apr-2008 15:09

OP System Version: 15C0-309
MCM

MWP_GUN SRPC-3546-Q1_2008_OP15 MWPT-CA SRPC-3546-Q1_2008_OP15
MWGT-AA SRPC-3546-Q1_2008_OP15

Input DLIS Files

DEFAULT	PERFO_008LUP	FN:7	PRODUCER	06-Apr-2008 14:18	2654.5 M	2584.7 M
---------	--------------	------	----------	-------------------	----------	----------

Output DLIS Files

DEFAULT	PERFO_016PUP	FN:15	PRODUCER	06-Apr-2008 15:09
---------	--------------	-------	----------	-------------------

Company:

Esso Australia Pty Ltd.

Schlumberger

Well:

W-18a

Field:

West Kingfish

Rig :

Prod4 / Ausl

Country:

Australia

2 1/8" Phased Powerjet

MWPT – GR

Perforation Record