



MSE DRILLING LOG



FROM :(mt) 1920 TO :(mt) 5120 SCALE : 1/ 1000

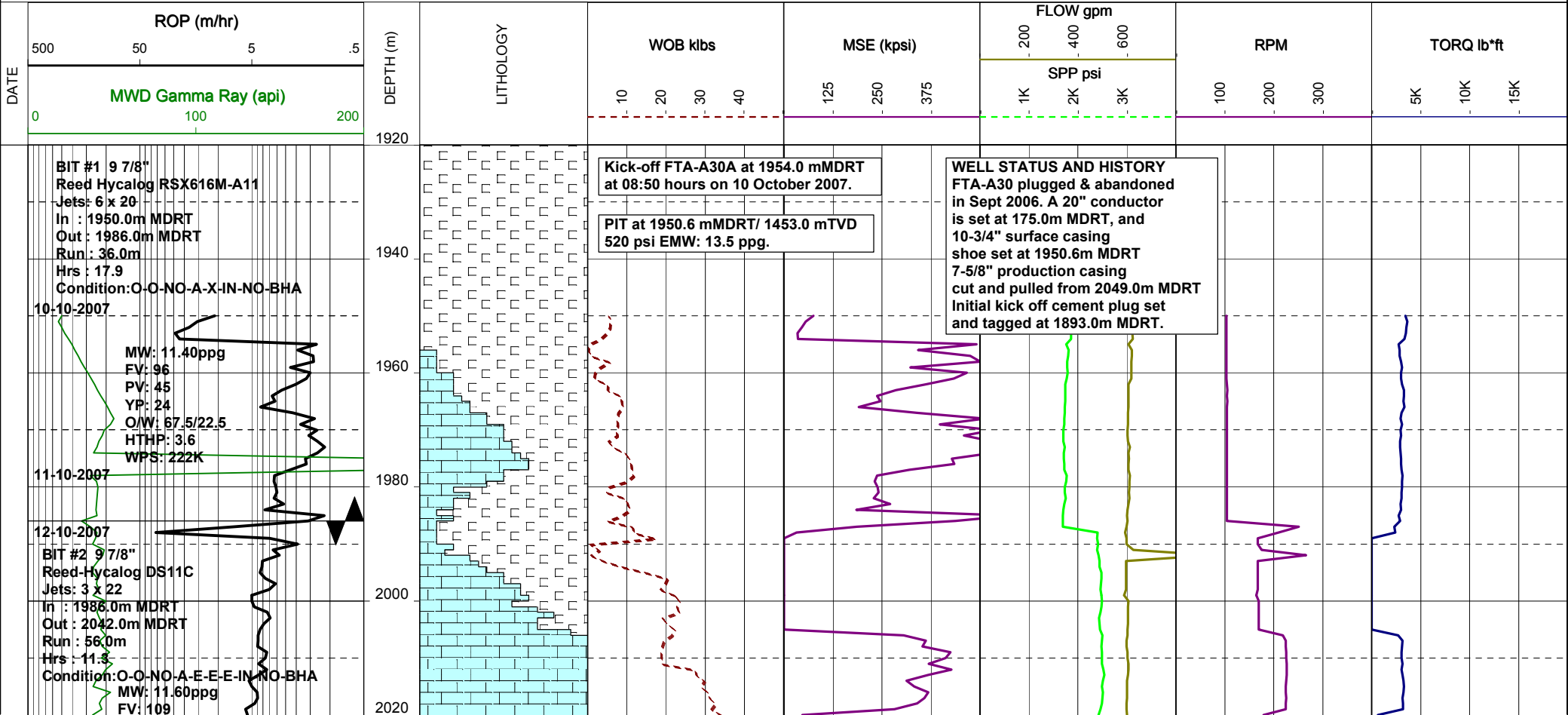
Well Name : FTA-A30A
Company : ESSO AUSTRALIA LTD

Country : AUSTRALIA

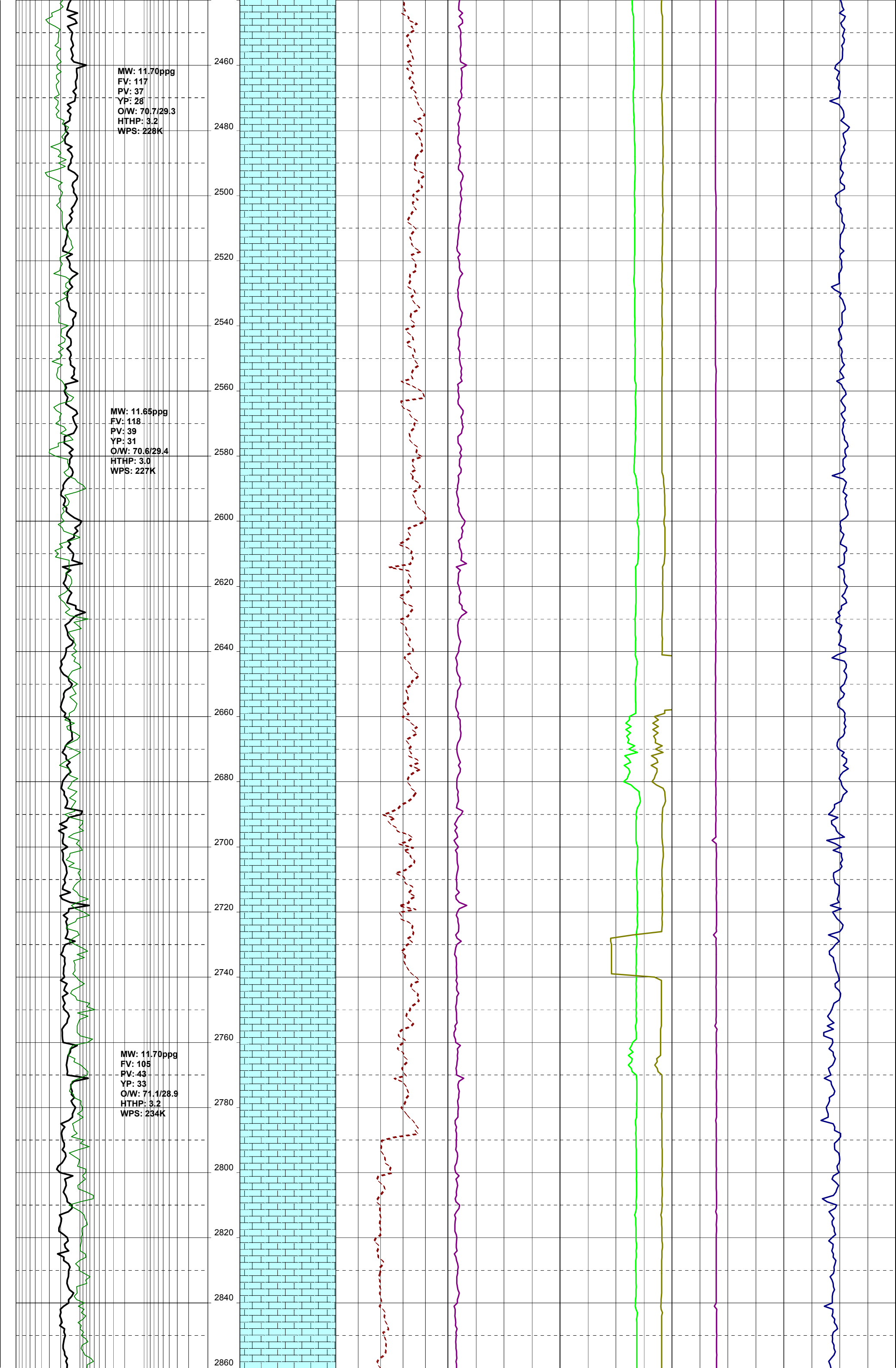
RT-MSL (m) : 42.50m
RT-SEABED (m): 111.50m

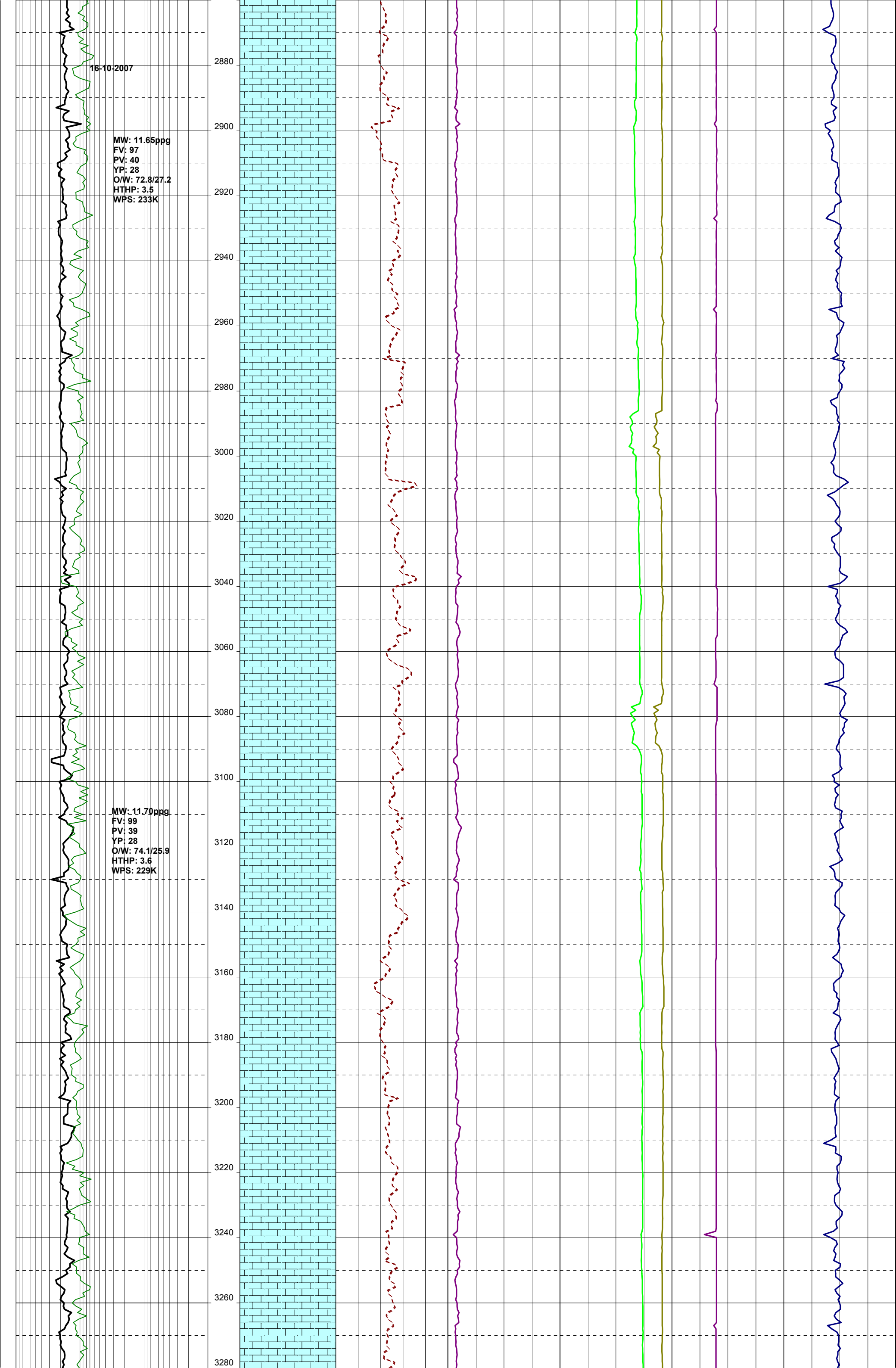
Final TD: 5097.00m MDRT
Final TVD: 2473.79m TVDRT

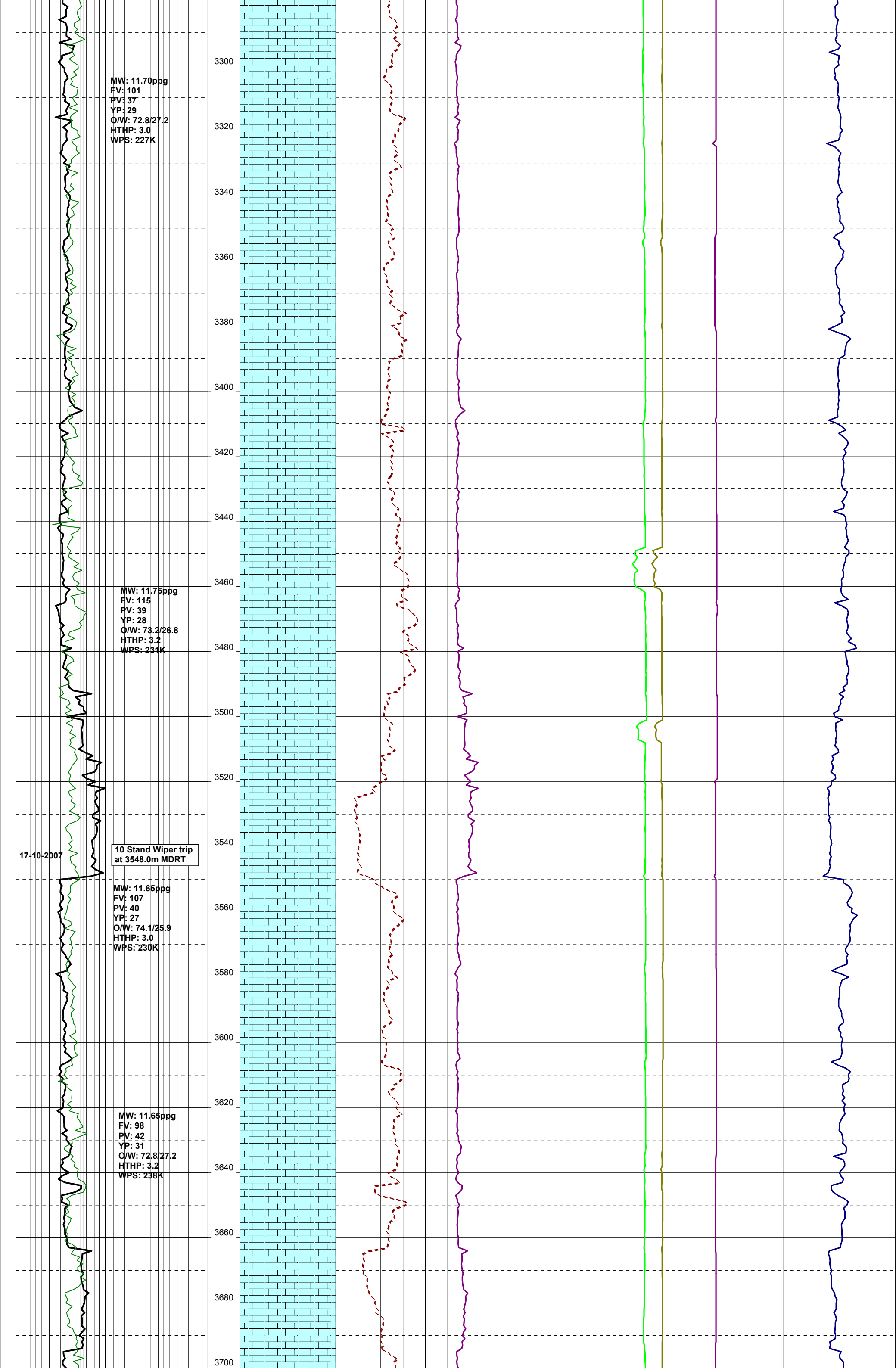
Generated by ALS Package

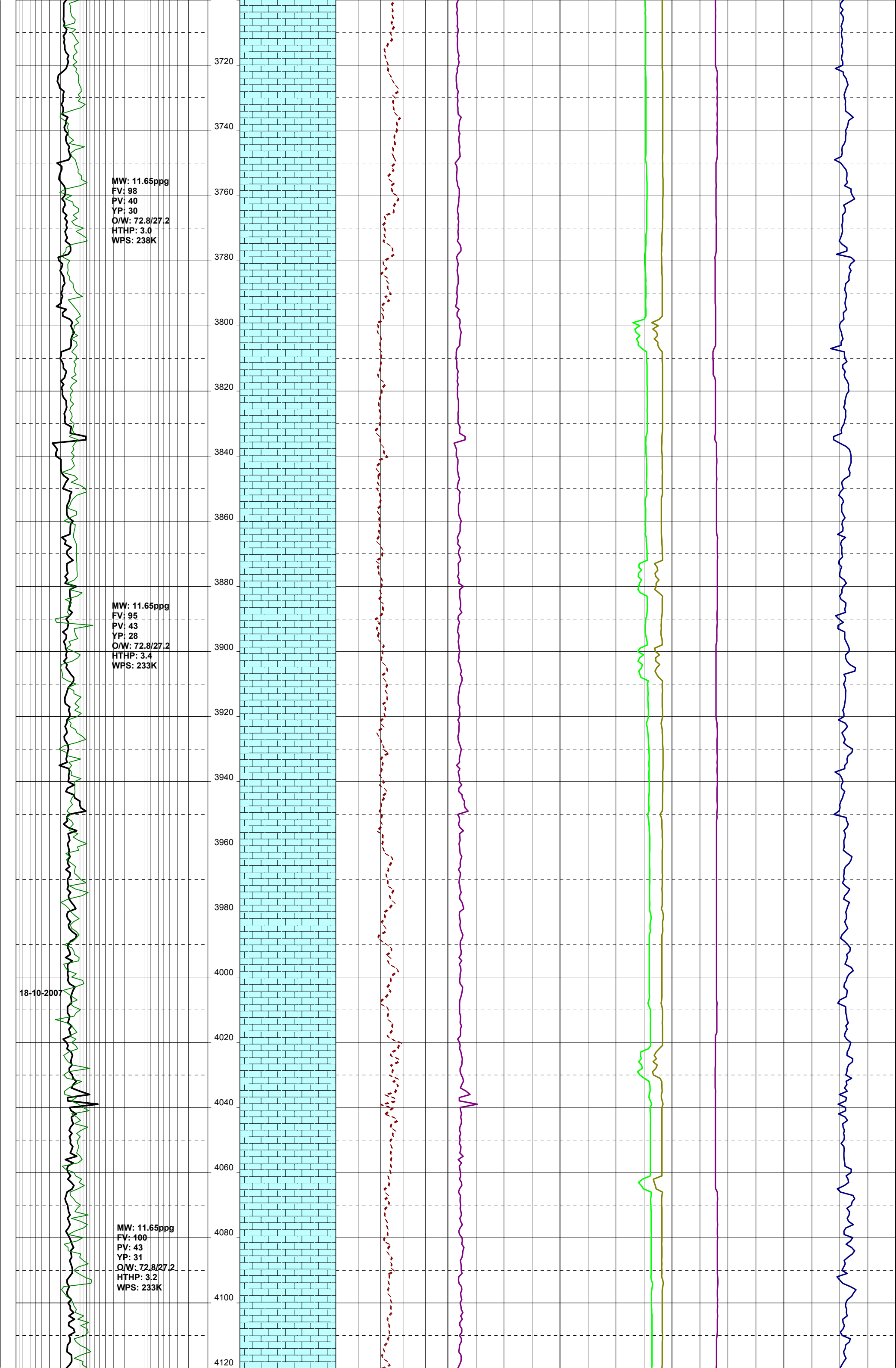


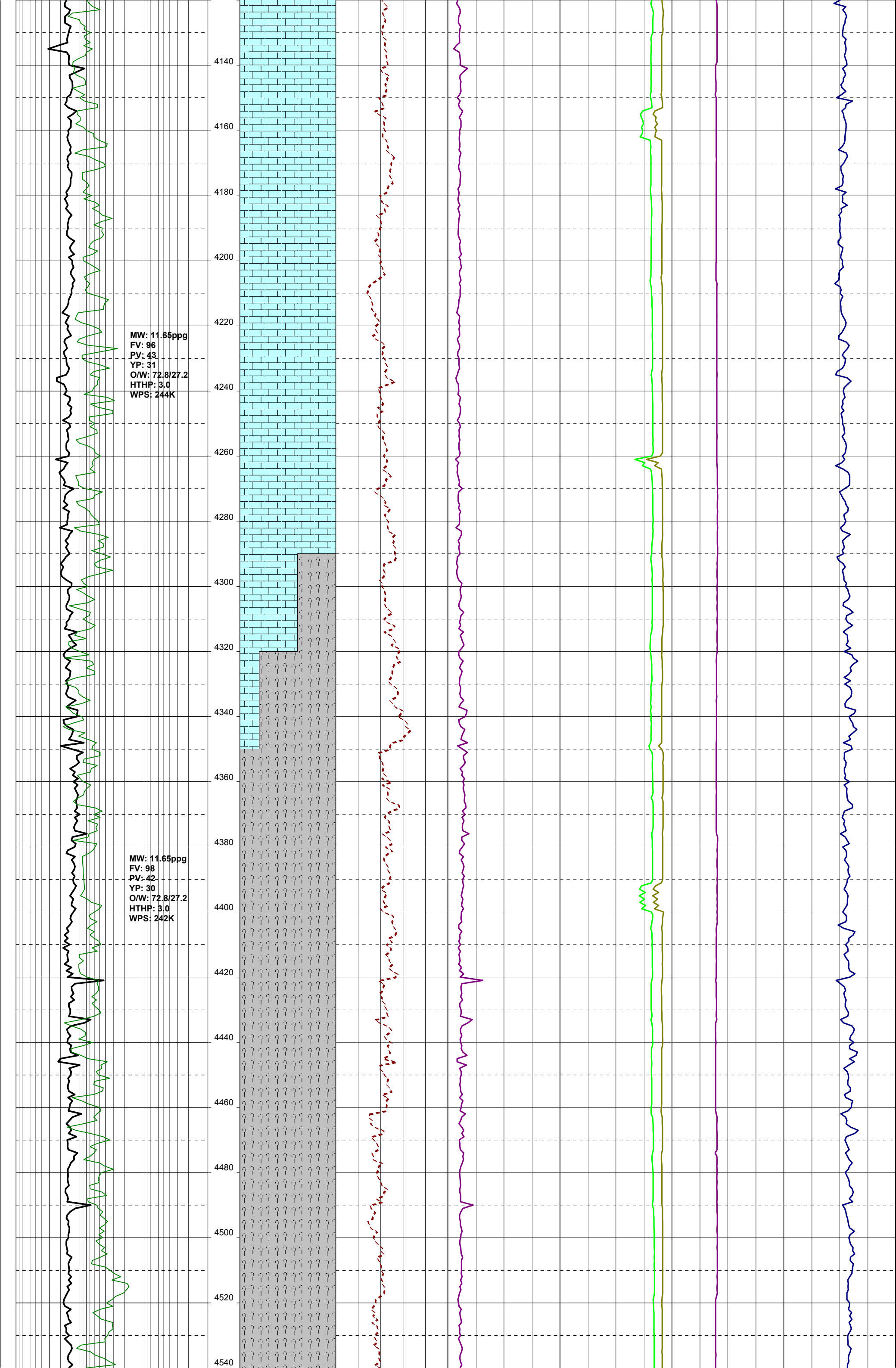


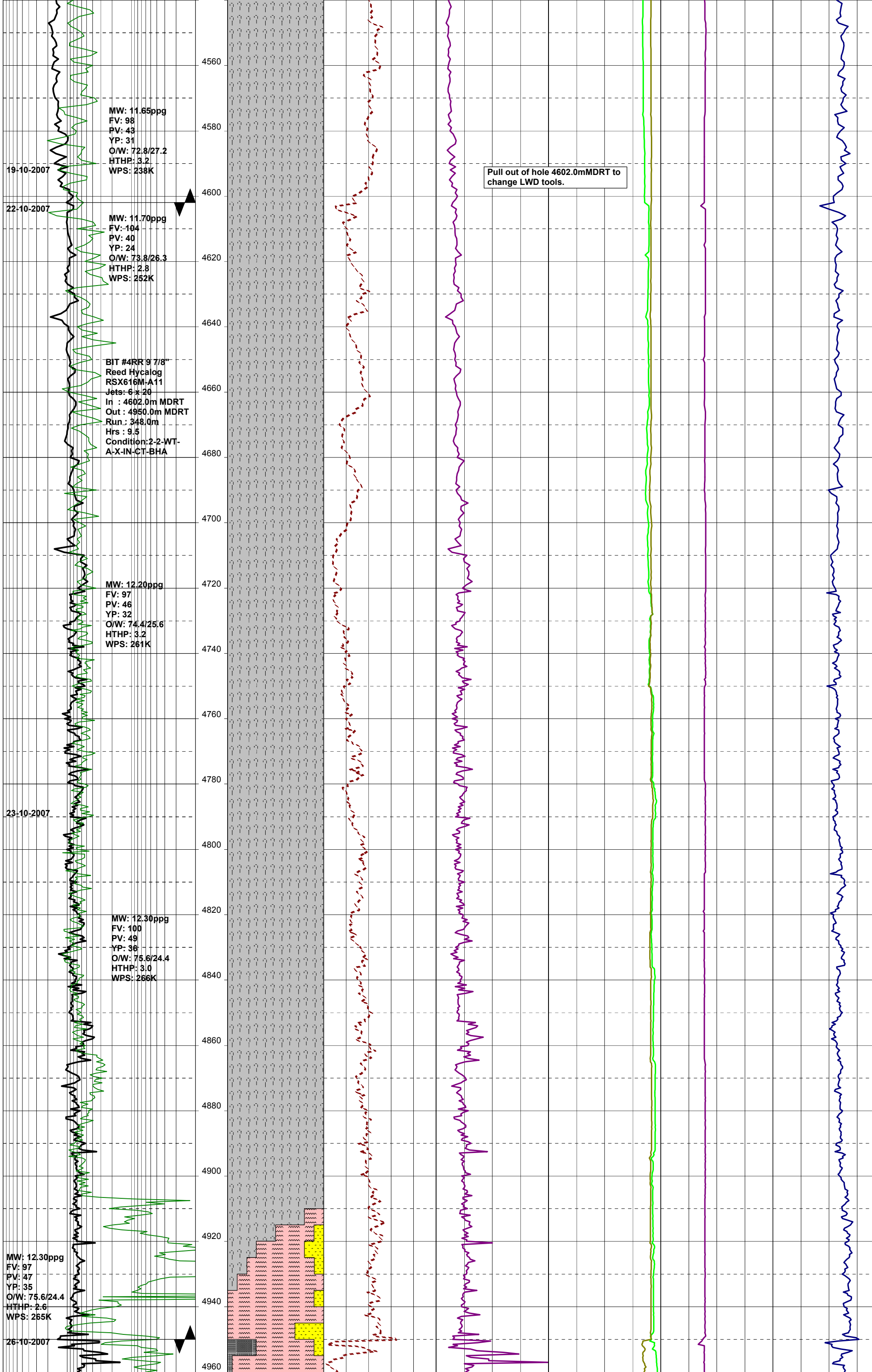












BIT #5RR 9 7/8"
Reed Hycalog
RSX616M-A11
Jets: 6 x 20
In : 4950.0m MDRT
Out : 5097.0m MDRT
Run : 147.0m
Hrs : 5.6
Condition: 2-2-WT-A-
X-IN-CT/PN-TD
MW: 12.30ppg
FV: 95
PV: 47
YP: 32
O/W: 76.8/23.2
HTHP: 2.2
WPS: 273K

MW: 12.35ppg
FV: 94
PV: 47
YP: 33
O/W: 76.9/23.1
HTHP: 2.8
WPS: 276K

7" Production Casing
Shoe set at 5075.6 mMDRT

FTA-A30A REACHED TD OF
5097.00 mMDRT 2473.79 mTVDRT
(-2431.29 mTVDSS) AT 19:30 HRS
ON THE 26th OCTOBER 2007